
Released August 23, 2005, by the National Agricultural Statistics Service (NASS), Agricultural Statistics Board, U.S. Department of Agriculture. For information on "Layers and Eggs" call Sharyn Lavender at (202) 720-3244, for "Chicks Hatched" call Jody Roberts at (202) 690-8632, office hours 7:30 a.m. to 4:00 p.m. ET.

July Egg Production Up Slightly

U.S. egg production totaled 7.56 billion during July 2005, up slightly from last year. Production included 6.44 billion table eggs, and 1.12 billion hatching eggs, of which 1.06 billion were broiler-type and 62 million were egg-type. The total number of layers during July 2005 averaged 340 million, down 1 percent from a year earlier. July egg production per 100 layers was 2,222 eggs, up 1 percent from July 2004.

All layers in the U.S. on August 1, 2005, totaled 340 million, down 1 percent from a year ago. The 340 million layers consisted of 282 million layers producing table or market type eggs, 55.9 million layers producing broiler-type hatching eggs, and 2.63 million layers producing egg-type hatching eggs. Rate of lay per day on August 1, 2005, averaged 71.0 eggs per 100 layers, same as a year ago.

Egg-Type Chicks Hatched Up 1 Percent

Egg-type chicks hatched during July 2005 totaled 35.3 million, up 1 percent from July 2004. Eggs in incubators totaled 35.3 million on August 1, 2005, up 12 percent from a year ago.

Domestic placements of egg-type pullet chicks for future hatchery supply flocks by leading breeders totaled 242,000 during July 2005, up 9 percent from July 2004.

Broiler-Type Chicks Hatched Up Slightly

Broiler-type chicks hatched during July 2005 totaled 808 million, up slightly from July 2004. Eggs in incubators totaled 663 million on July 1, 2005, down slightly from a year earlier.

Leading breeders placed 6.66 million broiler-type pullet chicks for future domestic hatchery supply flocks during July 2005, down slightly from July 2004.

This page is intentionally blank.

Contents

Page

U.S. Average Number of Layers on Hand and Egg Production	1
U.S. Layers on Hand and Egg Production by Type, Forced Molt, and Pullets	3
Layers on Hand and Eggs Produced by State	5
Egg Production by Type and State	7
Forced Molt	9
Egg-Type Hatchery	11
Egg-Type Intended Placements	13
Broiler-Type Hatchery	13
Broiler-Type Intended Placements	15
Procedures and Reliability	16

**All Layers: Average Number on Hand During the Month,
United States, 2002-05**

Month	2002	2003	2004	2005
	<i>1,000 Layers</i>	<i>1,000 Layers</i>	<i>1,000 Layers</i>	<i>1,000 Layers</i>
Dec ¹	341,243	341,131	339,789	345,960
Jan	340,885	341,996	338,550	348,142
Feb	339,529	341,661	339,647	348,985
Mar	339,434	340,971	341,700	347,272
Apr	338,809	339,268	342,612	344,041
May	337,566	337,356	342,786	342,837
Jun	337,339	335,979	342,835	341,484
Jul	337,849	335,417	342,479	340,184
Aug	338,397	335,565	342,983	
Sep	339,511	335,426	344,118	
Oct	340,461	336,557	345,056	
Nov	340,490	339,387	344,797	

¹ December preceding year.

**Eggs: Production During the Month by Type,
United States, 2004-05 ¹**

Month	Total Eggs		Table Eggs		Hatching Eggs	
	2004	2005	2004	2005	2004	2005
	<i>Million Eggs</i>	<i>Million Eggs</i>	<i>Million Eggs</i>	<i>Million Eggs</i>	<i>Million Eggs</i>	<i>Million Eggs</i>
Dec ²	7,554	7,728	6,492	6,643	1,063	1,085
Jan	7,386	7,617	6,323	6,518	1,063	1,100
Feb	6,901	6,919	5,895	5,906	1,007	1,014
Mar	7,547	7,727	6,453	6,599	1,095	1,129
Apr	7,358	7,384	6,284	6,288	1,074	1,097
May	7,513	7,558	6,393	6,425	1,120	1,133
Jun	7,289	7,346	6,209	6,250	1,080	1,096
Jul	7,557	7,560	6,455	6,441	1,102	1,120
Aug	7,538		6,443		1,095	
Sep	7,344		6,282		1,063	
Oct	7,659		6,569		1,090	
Nov	7,482		6,435		1,047	
During Year	89,131		76,236		12,896	

¹ Totals may not add due to rounding.

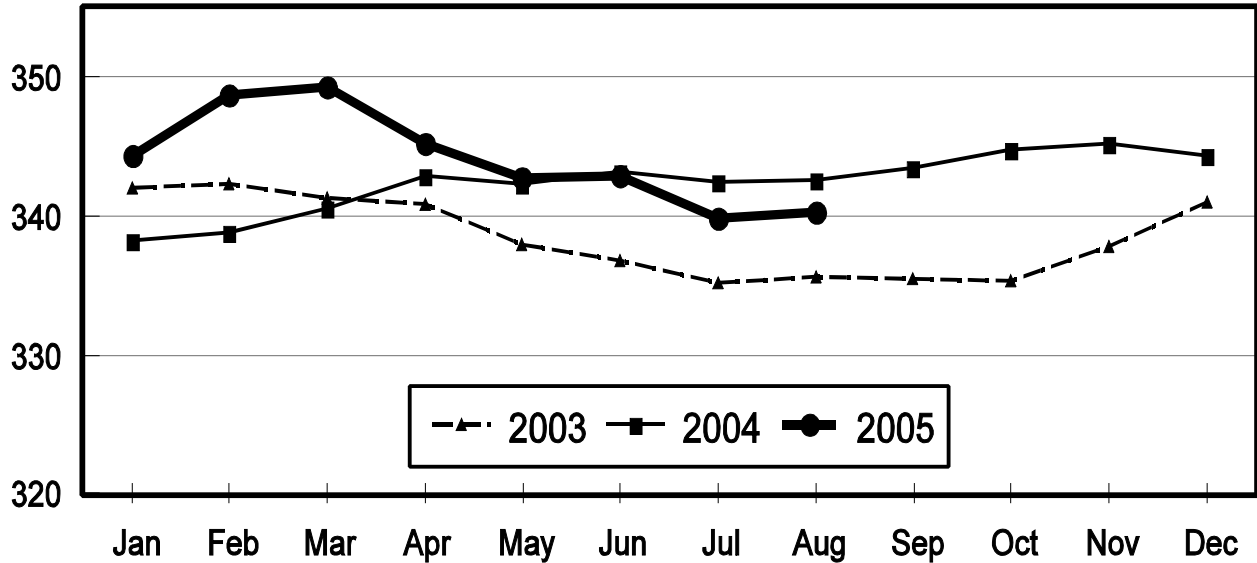
² December preceding year.

All Layers: Inventory

United States, 2003 - 2005

First of the Month

Million Layers

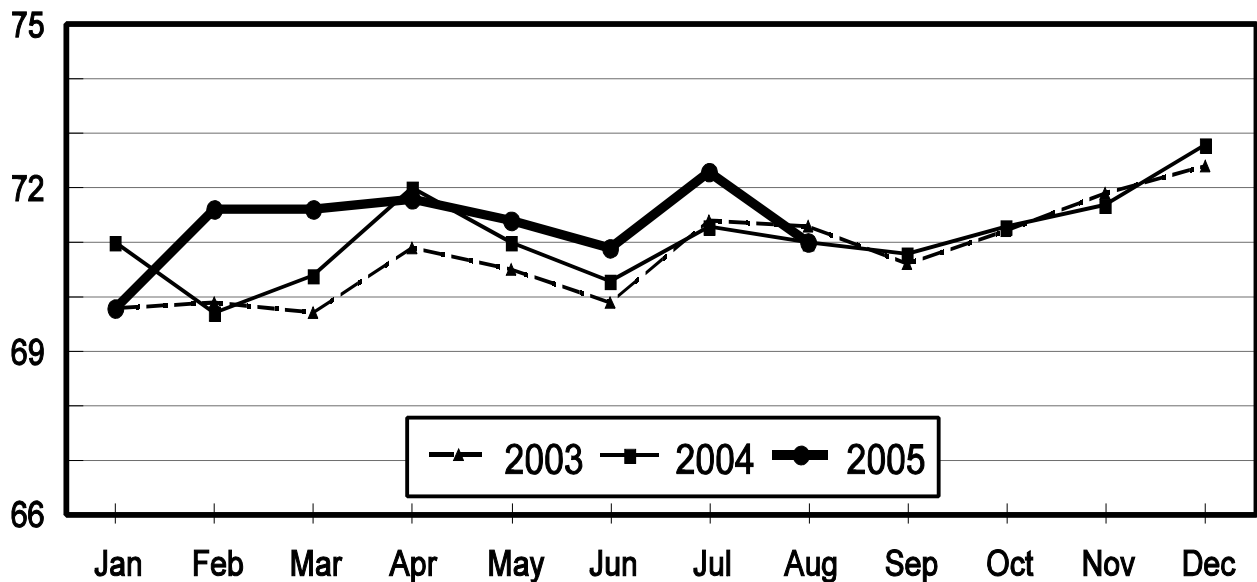


All Layers: Rate of Lay

United States, 2003 - 2005

First of the Month

Eggs Per 100 Layers



**Layers and Eggs: Layers on Hand and Eggs Produced by Type,
and Forced Molt, United States, June-July 2004-05 ¹**

Item	Unit	2004	2005 ²	2005 as % of 2004
Layers During Jun	1,000			
All Layers		342,835	341,484	100
Table Egg Type		282,966	282,444	100
Hatching Egg Type		59,869	59,040	99
Broiler-Type Hatching		57,529	56,382	98
Egg-Type Hatching		2,340	2,658	114
Eggs per 100 Layers During Jun	Number			
All Layers		2,126	2,151	101
Table Egg Type		2,194	2,213	101
Hatching Egg Type		1,804	1,856	103
Broiler-Type Hatching		1,783	1,834	103
Egg-Type Hatching		2,308	2,333	101
Eggs Produced During Jun	Million			
All Layers		7,289	7,346	101
Table Egg Type		6,209	6,250	101
Hatching Egg Type		1,080	1,096	101
Broiler-Type Hatching		1,026	1,034	101
Egg-Type Hatching		54	62	115
Layers on Jul 1	1,000			
All Layers		342,392	340,115	99
Table Egg Type		282,924	281,491	99
Hatching Egg Type		59,468	58,624	99
Broiler-Type Hatching		57,217	56,017	98
Egg-Type Hatching		2,251	2,607	116
Eggs per 100 Layers on Jul 1	Number			
All Layers		71.3	72.3	101
Table Egg Type		73.6	74.4	101
Hatching Egg Type		60.2	62.1	103
Broiler-Type Hatching		59.6	61.5	103
Egg-Type Hatching		76.9	77.1	100
Forced Molt Layers on Jul 1	Percent			
Percent Being Molted		4.6	3.3	72
Percent with Molt Completed		24.0	22.6	94
Layers Sold for Slaughter During Jun	1,000	16,101	16,031	100
Layers Rendered, Died, Destroyed, Composted or Disappeared For Any Reason During Jun	1,000	8,138	7,580	93
Pullets on Jul 1	1,000	104,149	103,111	99
Pullets Added During Jun ³	1,000	25,628	22,955	90

¹ Totals may not add due to rounding.

² Revised.

³ Pullet chicks less than 3 days old added to pullet flocks.

**Layers and Eggs: Layers on Hand and Eggs Produced by Type,
and Forced Molt, United States, July-August 2004-05 ¹**

Item	Unit	2004	2005	2005 as % of 2004
Layers During Jul	1,000			
All Layers		342,479	340,184	99
Table Egg Type		283,227	281,597	99
Hatching Egg Type		59,252	58,587	99
Broiler-Type Hatching		56,912	55,966	98
Egg-Type Hatching		2,340	2,621	112
Eggs per 100 Layers During Jul	Number			
All Layers		2,207	2,222	101
Table Egg Type		2,279	2,287	100
Hatching Egg Type		1,860	1,912	103
Broiler-Type Hatching		1,838	1,890	103
Egg-Type Hatching		2,393	2,366	99
Eggs Produced During Jul	Million			
All Layers		7,557	7,560	100
Table Egg Type		6,455	6,441	100
Hatching Egg Type		1,102	1,120	102
Broiler-Type Hatching		1,046	1,058	101
Egg-Type Hatching		56	62	111
Layers on Aug 1	1,000			
All Layers		342,522	340,204	99
Table Egg Type		283,508	281,676	99
Hatching Egg Type		59,014	58,528	99
Broiler-Type Hatching		56,594	55,902	99
Egg-Type Hatching		2,420	2,626	109
Eggs per 100 Layers on Aug 1	Number			
All Layers		71.0	71.0	100
Table Egg Type		73.4	73.1	100
Hatching Egg Type		59.6	60.9	102
Broiler-Type Hatching		58.9	60.3	102
Egg-Type Hatching		76.7	74.2	97
Forced Molt Layers on Aug 1	Percent			
Percent Being Molted		4.5	4.3	96
Percent with Molt Completed		23.4	22.0	94
Layers Sold for Slaughter During Jul	1,000	15,643	15,881	102
Layers Rendered, Died, Destroyed, Composted or Disappeared For Any Reason During Jul	1,000	7,253	5,740	79
Pullets on Aug 1	1,000	103,979	101,309	97
Pullets Added During Jul ²	1,000	26,204	22,859	87

¹ Totals may not add due to rounding.

² Pullet chicks less than 3 days old added to pullet flocks.

**Layers and Eggs: Layers on Hand and Eggs Produced by State
and United States, During June 2004-05**

State	Table Egg Layers in Flocks 30,000 and Above		All Layers ¹		Eggs per 100 for All Layers ¹	
	2004	2005 ²	2004	2005 ²	2004	2005 ²
	<i>1,000</i>	<i>1,000</i>	<i>1,000</i>	<i>1,000</i>	<i>Number</i>	<i>Number</i>
AL	1,760	1,798	9,430	9,191	1,813	1,882
AR	4,680	4,006	16,013	14,655	1,880	1,897
CA	19,660	19,180	20,171	19,676	2,152	2,170
CO	3,360	3,247	3,895	3,765	2,259	2,284
CT	2,805	3,050	2,858	3,108	2,309	2,284
FL	11,008	10,434	11,553	10,930	2,112	2,223
GA	11,098	9,829	20,197	19,072	2,025	2,040
HI	466	458	504	488	1,925	1,906
IL	3,626	4,302	3,849	4,532	2,052	2,273
IN	22,774	22,565	23,531	23,293	2,197	2,220
IA	43,513	47,229	44,204	47,989	2,142	2,159
ME	3,398	4,142	3,444	4,206	2,323	1,070
MD	3,020	2,818	3,141	2,939	2,197	2,178
MI	7,220	7,767	7,476	8,024	2,274	2,331
MN	10,078	10,310	10,616	10,838	2,251	2,251
MS	1,731	1,604	6,849	6,976	1,913	1,978
MO	5,574	5,917	6,901	7,270	2,159	2,242
NE	11,491	11,844	11,566	11,919	2,239	2,240
NY	3,707	3,941	4,035	4,270	2,354	2,295
NC	3,376	3,176	10,913	10,811	1,897	1,961
OH	27,818	27,474	28,303	27,955	2,152	2,200
OK	1,873	1,811	4,050	3,875	1,877	1,935
OR	2,784	2,785	2,957	2,975	2,232	2,420
PA	22,432	21,193	24,189	22,988	2,270	2,340
SC	4,107	3,704	5,274	5,018	1,991	1,973
SD	3,335	2,914	3,535	3,014	2,235	2,157
TX	13,626	12,859	18,016	17,226	2,159	2,183
VA	1,280	1,463	3,290	3,331	1,854	2,192
WA	4,830	4,928	4,897	4,994	2,308	2,323
WI	3,928	4,328	4,433	4,814	2,188	2,243
Oth Sts ³	16,522	15,418	22,745	21,342	2,110	2,151
US	276,880	276,494	342,835	341,484	2,126	2,151

¹ Includes all layers and eggs produced in both table egg and hatching egg flocks regardless of size.

² Revised.

³ Not published separately to avoid disclosing data for individual operations.

**Layers and Eggs: Layers on Hand and Eggs Produced by State
and United States, During July 2004-05**

State	Table Egg Layers in Flocks 30,000 and Above		All Layers ¹		Eggs per 100 for All Layers ¹	
	2004	2005	2004	2005	2004	2005
	<i>1,000</i>	<i>1,000</i>	<i>1,000</i>	<i>1,000</i>	<i>Number</i>	<i>Number</i>
AL	1,870	1,780	9,548	9,220	1,864	1,898
AR	4,544	4,040	15,225	14,414	1,944	1,998
CA	19,813	19,264	20,298	19,797	2,232	2,212
CO	3,310	3,278	3,843	3,795	2,446	2,398
CT	2,718	2,954	2,763	3,010	2,461	2,425
FL	11,073	10,604	11,622	11,080	2,229	2,256
GA	10,965	9,776	20,076	18,919	2,117	2,114
HI	457	460	495	487	2,020	2,033
IL	3,869	4,223	4,101	4,453	2,121	2,336
IN	23,474	22,654	24,214	23,400	2,234	2,222
IA	44,271	46,348	44,963	47,101	2,260	2,314
ME	2,784	4,207	2,836	4,266	2,468	1,125
MD	2,949	2,765	3,079	2,876	2,144	2,399
MI	7,402	7,769	7,652	8,022	2,287	2,319
MN	10,103	10,293	10,638	10,826	2,322	2,291
MS	1,706	1,593	6,825	6,855	1,993	2,042
MO	5,689	5,895	7,034	7,266	2,175	2,230
NE	11,496	11,943	11,571	12,018	2,307	2,297
NY	3,788	3,976	4,108	4,305	2,434	2,416
NC	3,317	3,327	10,817	10,932	1,960	1,994
OH	27,278	27,347	27,755	27,841	2,245	2,266
OK	1,873	1,847	4,064	3,882	1,944	1,984
OR	2,735	2,733	2,917	2,926	2,331	2,461
PA	22,340	21,227	24,139	23,045	2,357	2,382
SC	4,064	3,758	5,246	5,037	2,230	2,045
SD	3,326	2,927	3,526	3,027	2,240	2,213
TX	13,679	12,904	18,124	17,307	2,251	2,271
VA	1,235	1,407	3,193	3,325	1,942	2,226
WA	4,785	4,872	4,849	4,936	2,269	2,391
WI	3,850	4,309	4,348	4,796	2,254	2,419
Oth Sts ²	16,378	15,170	22,610	21,020	2,172	2,236
US	277,141	275,650	342,479	340,184	2,207	2,222

¹ Includes all layers and eggs produced in both table egg and hatching egg flocks regardless of size.

² Not published separately to avoid disclosing data for individual operations.

**Egg Production: By Type, State, and United States,
June 2004-05 ¹**

State	Total Production		Table Eggs ²		Hatching Eggs ²	
	2004	2005 ³	2004	2005 ³	2004	2005 ³
	<i>Million Eggs</i>	<i>Million Eggs</i>	<i>Million Eggs</i>	<i>Million Eggs</i>	<i>Million Eggs</i>	<i>Million Eggs</i>
AL	171	173	37	37	134	136
AR	301	278	106	91	195	187
CA	434	427				
CO	88	86				
CT	66	71				
FL	244	243	234	235	10	8
GA	409	389	240	216	169	173
HI	9.7	9.3	9.7	9.3	0	0
IL	79	103	76	100	3	3
IN	517	517	505	505	12	12
IA	947	1,036				
ME	80	45				
MD	69	64	67	62	2	2
MI	170	187				
MN	239	244	231	236	8	8
MS	131	138	39	38	92	100
MO	149	163				
NE	259	267	259	267	0	0
NY	95	98				
NC	207	212	77	75	130	137
OH	609	615				
OK	76	75	43	41	33	34
OR	66	72	64	70	2	2
PA	549	538	533	520	16	18
SC	105	99	85	77	20	22
SD	79	65	79	65	0	0
TX	389	376				
VA	61	73	28	38	33	35
WA	113	116				
WI	97	108				
Oth Sts ⁴	480	459	387	370	93	89
US	7,289	7,346	6,209	6,250	1,080	1,096

¹ Totals may not add due to rounding.

² Data by type of flock not shown for some States to avoid disclosing individual operations.

³ Revised.

⁴ Not published separately to avoid disclosing data for individual operations.

**Egg Production: By Type, State, and United States,
July 2004-05 ¹**

State	Total Production		Table Eggs ²		Hatching Eggs ²	
	2004	2005	2004	2005	2004	2005
	<i>Million Eggs</i>	<i>Million Eggs</i>	<i>Million Eggs</i>	<i>Million Eggs</i>	<i>Million Eggs</i>	<i>Million Eggs</i>
AL	178	175	39	37	139	138
AR	296	288	107	97	189	191
CA	453	438				
CO	94	91				
CT	68	73				
FL	259	250	249	242	10	8
GA	425	400	251	224	174	176
HI	10.0	9.9	10.0	9.9	0	0
IL	87	104	83	100	4	4
IN	541	520	529	508	12	12
IA	1,016	1,090				
ME	70	48				
MD	66	69	64	67	2	2
MI	175	186				
MN	247	248	239	240	8	8
MS	136	140	41	38	95	102
MO	153	162				
NE	267	276	267	276	0	0
NY	100	104				
NC	212	218	79	80	133	138
OH	623	631				
OK	79	77	44	43	35	34
OR	68	72	66	70	2	2
PA	569	549	551	531	18	18
SC	117	103	95	81	22	22
SD	79	67	79	67	0	0
TX	408	393				
VA	62	74	29	37	33	37
WA	110	118				
WI	98	116				
Oth Sts ³	491	470	397	379	95	92
US	7,557	7,560	6,455	6,441	1,102	1,120

¹ Totals may not add due to rounding.

² Data by type of flock not shown for some States to avoid disclosing individual operations.

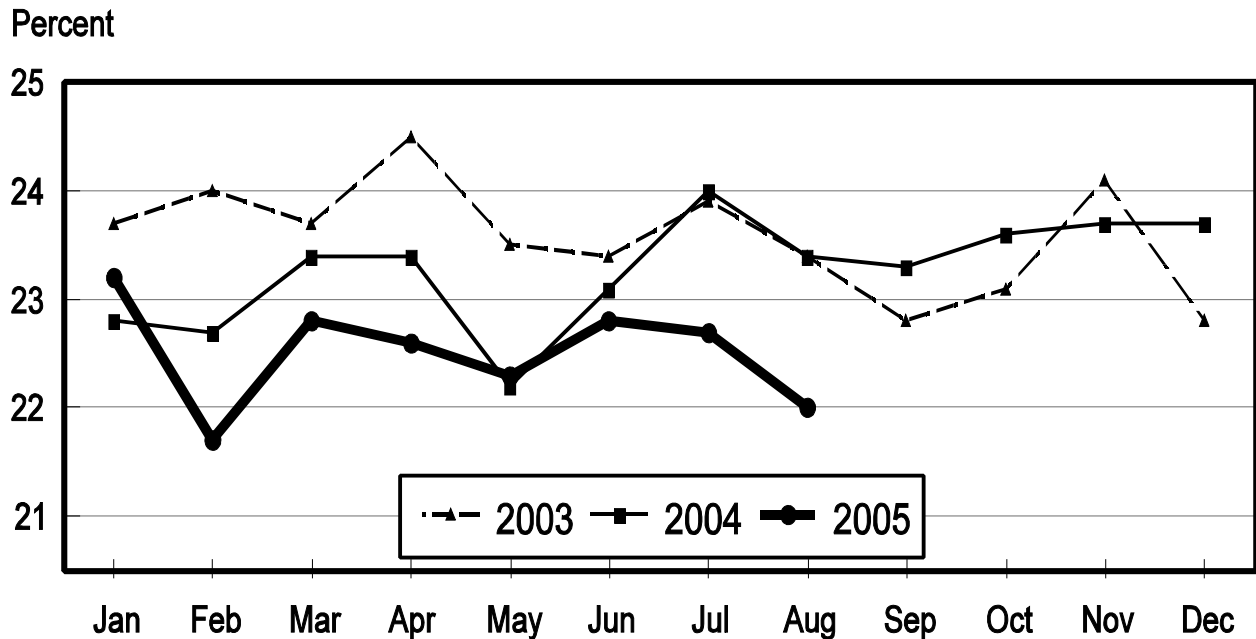
³ Not published separately to avoid disclosing data for individual operations.

**Forced Molt: Percent of All Layers by Month,
United States, 2004-05 ¹**

Month	Percent Being Molted		Percent with Molt Completed	
	2004	2005	2004	2005
	<i>Percent</i>	<i>Percent</i>	<i>Percent</i>	<i>Percent</i>
Jan	3.9	4.1	22.8	23.2
Feb	4.9	4.6	22.7	21.7
Mar	4.6	3.0	23.4	22.8
Apr	2.6	4.1	23.4	22.6
May	4.7	4.0	22.2	22.3
Jun	4.8	4.2	23.1	23.0
Jul	4.6	3.3	24.0	22.6
Aug	4.5	4.3	23.4	22.0
Sep	4.5		23.3	
Oct	3.9		23.6	
Nov	4.2		23.7	
Dec	2.6		23.7	

¹ As of first of month.

**All Layers: Percent Molt Completed
United States, 2003 - 2005
First of the Month**



**Forced Molt: Percent of All Layers by State
and United States, August 2004-05 ¹**

State	Percent Being Molted		Percent with Molt Completed	
	2004	2005	2004	2005
	<i>Percent</i>	<i>Percent</i>	<i>Percent</i>	<i>Percent</i>
AL	1.5	1.5	3.0	5.0
AR	0.5	1.5	10.0	10.0
CA	3.5	5.5	33.0	32.0
CO	3.0	1.5	23.0	28.0
CT	0.0	0.0	11.5	10.0
FL	6.0	6.0	32.0	27.0
GA	5.0	6.5	17.5	14.0
HI	6.0	9.0	50.5	48.5
IL	0.0	7.0	41.0	29.0
IN	6.0	6.5	27.5	25.0
IA	5.0	5.5	34.5	35.0
ME	0.0	0.0	0.0	0.0
MD	16.0	6.0	15.5	40.0
MI	6.5	6.0	31.5	32.0
MN	6.5	4.5	23.5	15.5
MS	1.0	3.0	12.0	8.0
MO	5.0	4.0	19.5	21.0
NE	4.5	7.0	19.5	24.5
NY	4.0	2.0	4.5	7.5
NC	2.0	0.0	9.5	8.5
OH	8.0	2.0	25.0	16.0
OK	0.0	0.0	5.0	5.0
OR	2.5	6.5	35.5	33.0
PA	4.0	5.0	14.5	15.5
SC	0.0	8.0	28.5	25.0
SD	14.0	3.0	28.5	20.5
TX	2.5	2.0	21.0	21.0
VA	8.5	0.0	22.0	14.5
WA	4.0	9.0	40.5	37.5
WI	10.5	6.5	30.5	22.0
Oth Sts ²	4.1	3.0	27.0	28.4
US	4.5	4.3	23.4	22.0

¹ As of first of month.

² Not published separately to avoid disclosing data for individual operations.

**Hatchery Production: Eggs in Incubators, Chicks Hatched,
and Placements by Type, United States, July-August 2004-05**

Item	2004	2005	2005 as % of 2004
	<i>1,000</i>	<i>1,000</i>	<i>Percent</i>
Egg-Type			
Eggs in Incubators on Aug 1	31,522	35,305	112
Chicks Hatched During Jul	34,919	35,310	101
Chicks Hatched Jan thru Jul	252,863	259,255	103
Pullets Hatched During Jul for Intended Placements in Hatchery Supply Flocks	222	242	109
7-18 Months Earlier ¹	3,198	2,995	94
Broiler-Type			
Eggs in Incubators on Aug 1	663,491	662,712	100
Chicks Hatched During Jul	806,658	807,654	100
Chicks Hatched Jan thru Jul	5,472,694	5,559,923	102
Pullets Hatched During Jul for Intended Placements in Hatchery Supply Flocks	6,688	6,657	100
7-15 Months Earlier ²	62,020	62,965	102

¹ 2005 includes pullet chicks hatched Jan 2004 through Dec 2004.

² 2005 includes pullet chicks hatched Apr 2004 through Dec 2004.

**Egg-Type Eggs in Incubators: By Region and United States,
August 1, 2004-05**

Region	2004	2005	2005 as % of 2004
	<i>1,000</i>	<i>1,000</i>	<i>Percent</i>
North Atlantic	4,778	5,577	117
E North Central	7,261	7,154	99
W North Central	6,292	7,479	119
South Atlantic	3,681	3,911	106
South Central	4,149	6,444	155
West	5,361	4,740	88
US	31,522	35,305	112

Regions:

North Atlantic = CT, ME, MA, NH, NJ, NY, PA, RI, VT.

E North Central = IL, IN, MI, OH, WI.

W North Central = IA, KS, MN, MO, NE, ND, SD.

South Atlantic = DE, FL, GA, MD, NC, SC, VA, WV.

South Central = AL, AR, KY, LA, MS, OK, TN, TX.

West = AK, AZ, CA, CO, HI, ID, MT, NM, NV, OR, UT, WA, WY.

**Egg-Type Chicks Hatched: By State and United States,
July 2004-05**

State	During July			Jan-Jul		
	2004	2005	2005 as % of 2004	2004	2005	2005 as % of 2004
	<i>1,000</i>	<i>1,000</i>	<i>Percent</i>	<i>1,000</i>	<i>1,000</i>	<i>Percent</i>
FL	699	513	73	4,512	4,720	105
GA	2,328	2,258	97	16,630	15,985	96
IN	5,148	4,882	95	34,939	35,621	102
IA	5,670	6,747	119	43,033	43,821	102
MN	850	1,100	129	6,409	7,383	115
PA	4,491	4,227	94	36,253	33,894	93
Oth Sts ¹	15,733	15,583	99	111,087	117,831	106
US	34,919	35,310	101	252,863	259,255	103

¹ Not published separately to avoid disclosing data for individual operations.

Egg-Type Chicks Hatched: By Month, United States, 2003-05

Month	By Months				Cumulative			
	2003	2004	2005	2005 as % of 2004	2003	2004	2005	2005 as % of 2004
	<i>1,000</i>	<i>1,000</i>	<i>1,000</i>	<i>Percent</i>	<i>1,000</i>	<i>1,000</i>	<i>1,000</i>	<i>Percent</i>
Jan	33,521	35,155	37,936	108	33,521	35,155	37,936	108
Feb	30,474	31,923	33,932	106	63,995	67,078	71,868	107
Mar	36,775	37,545	41,824	111	100,770	104,623	113,692	109
Apr	37,820	37,466	38,267	102	138,590	142,089	151,959	107
May	37,630	38,347	37,449	98	176,220	180,436	189,408	105
Jun	36,602	37,508	34,537	92	212,822	217,944	223,945	103
Jul	35,578	34,919	35,310	101	248,400	252,863	259,255	103
Aug	33,199	36,854			281,599	289,717		
Sep	35,763	36,631			317,362	326,348		
Oct	34,812	34,866			352,174	361,214		
Nov	30,241	38,758			382,415	399,972		
Dec	33,588	37,332			416,003	437,304		

**Intended Placements: Egg-Type Pullet Chicks for Hatchery Supply
Flocks by Month and Total, United States, 2003-05 ¹**

Month	Pullet Chicks Hatched			2005 as % of 2004	Cumulative Potential Placements Relative to Current Supply Flocks 7-18 Months Earlier ²		
	2003	2004	2005		2004	2005	2006
	<i>1,000</i>	<i>1,000</i>	<i>1,000</i>	<i>Percent</i>	<i>1,000</i>	<i>1,000</i>	<i>1,000</i>
Jan	210	124	157	127	3,012	3,088	2,834
Feb	225	285	208	73	2,960	3,080	2,854
Mar	319	401	314	78	2,927	3,210	
Apr	280	343	308	90	2,923	3,142	
May	289	157	190	121	3,047	3,100	
Jun	309	212	184	87	3,139	3,006	
Jul	230	222	242	109	3,198	2,995	
Aug	188	318			3,112	3,028	
Sep	273	205			3,172	2,951	
Oct	310	268			3,254	2,864	
Nov	319	225			3,317	2,829	
Dec	246	235			3,185	2,862	
Total	3,198	2,995					

¹ Reported by leading breeders. Coverage may not be 100 percent. Includes expected pullet chicks from eggs sold during the preceding month at the rate of 125 pullet chicks per 30 dozen case of eggs.

² For July 2005, includes breeder pullet chicks hatched Jan 2004 through Dec 2004. The 7-18 months represent the first laying cycle. Molting and additional laying cycles will increase the cumulative potential placements.

**Broiler-Type Eggs in Incubators: By Region
and United States, August 1, 2004-05**

Region	2004	2005	2005 as % of 2004
	<i>1,000</i>	<i>1,000</i>	<i>Percent</i>
North Atlantic	12,767	12,691	99
E North Central	9,259	9,131	99
W North Central	23,723	24,246	102
South Atlantic	236,833	237,807	100
South Central	355,606	352,679	99
West	25,303	26,158	103
US	663,491	662,712	100

**Broiler-Type Chicks Hatched: By State
and United States, July 2004-05**

State	During July			Jan-Jul		
	2004	2005	2005 as % of 2004	2004	2005	2005 as % of 2004
	<i>1,000</i>	<i>1,000</i>	<i>Percent</i>	<i>1,000</i>	<i>1,000</i>	<i>Percent</i>
AL	113,711	116,103	102	767,552	778,913	101
AR	115,416	112,224	97	789,707	784,070	99
DE	13,709	15,103	110	95,258	101,839	107
FL	4,987	5,068	102	34,187	34,012	99
GA	122,912	121,744	99	834,396	843,091	101
KY	26,607	25,826	97	177,197	178,969	101
LA	14,113	15,225	108	95,902	102,862	107
MD	32,708	32,776	100	219,738	219,950	100
MS	74,656	72,443	97	500,482	496,347	99
NC	67,288	66,046	98	461,854	465,197	101
OK	24,284	23,992	99	163,796	164,996	101
PA	13,747	14,398	105	90,832	99,708	110
SC	13,729	18,746	137	92,633	127,201	137
TX	56,341	56,825	101	380,571	387,213	102
VA	25,121	23,969	95	165,547	164,655	99
CA, MO, TN, & WV	64,017	65,994	103	444,246	458,357	103
19 Sts ¹	783,346	786,482	100	5,313,898	5,407,380	102
Oth Sts ²	23,312	21,172	91	158,796	152,543	96
US	806,658	807,654	100	5,472,694	5,559,923	102

¹ States in the weekly hatchery production estimating program.

² Not published separately to avoid disclosing data for individual operations.

Broiler-Type Chicks Hatched: By Month, United States, 2003-05

Month	By Months				Cumulative			
	2003	2004	2005	2005 as % of 2004	2003	2004	2005	2005 as % of 2004
	<i>1,000</i>	<i>1,000</i>	<i>1,000</i>	<i>Percent</i>	<i>1,000</i>	<i>1,000</i>	<i>1,000</i>	<i>Percent</i>
Jan	759,674	774,004	796,026	103	759,674	774,004	796,026	103
Feb	693,549	728,401	731,274	100	1,453,223	1,502,405	1,527,300	102
Mar	774,354	791,915	815,782	103	2,227,577	2,294,320	2,343,082	102
Apr	760,638	774,629	789,780	102	2,988,215	3,068,949	3,132,862	102
May	792,813	810,484	823,406	102	3,781,028	3,879,433	3,956,268	102
Jun	774,679	786,603	796,001	101	4,555,707	4,666,036	4,752,269	102
Jul	777,838	806,658	807,654	100	5,333,545	5,472,694	5,559,923	102
Aug	784,107	810,285			6,117,652	6,282,979		
Sep	739,515	769,934			6,857,167	7,052,913		
Oct	735,235	756,895			7,592,402	7,809,808		
Nov	707,891	730,353			8,300,293	8,540,161		
Dec	780,321	793,090			9,080,614	9,333,251		

**Intended Placements: Broiler-Type Pullet Chicks for Hatchery
Supply Flocks by Month and Total, 2003-05 ¹**

Month	Pullet Chicks Hatched			2005 as % of 2004	Cumulative Potential Placements Relative to Current Supply Flocks 7-15 Months Earlier ²		
	2003	2004	2005		2004	2005	2006
	<i>1,000</i>	<i>1,000</i>	<i>1,000</i>	<i>Percent</i>	<i>1,000</i>	<i>1,000</i>	<i>1,000</i>
US Place- ments							
Jan	6,269	6,811	6,409	94	60,300	62,084	62,860
Feb	6,659	7,340	7,325	100	61,106	62,460	63,060
Mar	6,888	6,815	7,077	104	61,421	62,794	
Apr	6,735	6,402	6,800	106	61,600	63,574	
May	7,323	7,590	7,783	103	61,643	63,220	
Jun	6,748	6,890	7,109	103	61,930	63,008	
Jul	7,071	6,688	6,657	100	62,020	62,965	
Aug	7,253	7,280			62,096	62,972	
Sep	6,654	7,758			62,113	62,707	
Oct	6,312	6,457			62,180	62,894	
Nov	6,946	7,128			61,511	63,006	
Dec	6,978	6,772			61,848	63,509	
Annual Total	81,836	83,931					
Total Place- ments ³							
Jan	7,388	7,812	7,804	100			
Feb	8,094	8,251	8,664	105			
Mar	8,400	7,801	8,709	112			
Apr	8,062	7,288	7,995	110			
May	8,604	8,693	8,995	103			
Jun	8,341	8,590	8,571	100			
Jul	8,555	8,003	7,846	98			
Aug	8,608	8,416					
Sep	8,338	9,184					
Oct	7,695	7,678					
Nov	8,246	8,411					
Dec	8,185	8,263					
Annual Total	98,516	98,390					

¹ Reported by leading breeders. Coverage may not be 100 percent. Includes expected pullet chicks from eggs sold during the preceding month at the rate of 125 pullet chicks per 30 dozen case of eggs.

² For Jul 2005, includes breeder pullet chicks hatched Apr 2004 through Dec 2004.

³ U.S. production of intended placements worldwide.

Procedures and Reliability

Data Sources: Primary data for the "**Chickens and Eggs**" report are from weekly and/or monthly questionnaires sent to producers. An attempt is made to collect information for layer and egg estimates from each known contractor and independent producer who has at least 30,000 table egg layers, flocks of hatchery supply layers, or pullet only operations with at least 500 pullets. Coverage for operations with less than 30,000 table egg layers are estimated each month based on data reported in December. Approximately 900 contractors, independent egg producers, and pullet only operations are contacted each month. All known hatcheries, approximately 330, are contacted for information on a weekly and/or monthly basis.

Revisions: The previous month's estimates are subject to revision if late reports or corrected data indicates a different level. Additionally, revisions after the monthly report will be made at the end of the marketing year and published in the annual reports of "**Chickens and Eggs Summary**" and "**Hatchery Production**".

Procedures and Reliability: Operations are mailed a questionnaire and given adequate time to respond by mail. Those that do not respond are phoned. Great care is exercised to ensure that all operations are accounted for during each survey period. However, there are usually missing reports that must be accounted for in the estimates.

Sound statistical methodology is employed to derive estimates from the reported data. All data are checked for unusual values. All operations' data are compared to their own past operating profiles and also to trends from other operations. Data for missing operations are estimated based on similar operations or historical data. Survey data are subject to non-sampling errors such as omissions and mistakes in reporting and in processing. While these errors cannot be measured directly, they are minimized by reviewing all data for consistency and reasonableness.

Egg-type chicks hatched consist of all chicks of egg-type domesticated breeds including males and chicks destined for hatchery supply flocks and research purposes. The relationship of chicks hatched to chicken inventory and poultry marketings is carefully monitored. The disposition of egg-type chicks hatched prior to placement into the laying flock can vary significantly, which can make comparisons to changes in layer inventory inconsistent over time.

Intended placement data reported by leading breeders include pullet chicks expected from eggs sold the preceding month. The breeders in this report account for a large percentage of replacement pullets for hatchery supply flocks. Production of replacement pullets by these breeders indicates the number of pullets available to hatchery supply flocks several months before the pullets will actually move into the flocks. "Hatchery Supply Flocks" include all generations of layers which could lay eggs to supply a hatchery. This includes the generations of parents, grandparents, great-grandparents, pedigree, etc. Also included are research flocks, vaccine flocks, and specific pathogen-free flocks. The broiler cumulative potential placements are a moving total of the intended placements 7-15 months earlier. The egg-type cumulative potential placements of 7-18 months represent the first laying cycle. Molting and additional laying cycles will increase the cumulative potential placements of egg-type hatching flocks.

ACCESS TO REPORTS!!

For your convenience, there are several ways to obtain NASS reports, data products, and services:

INTERNET ACCESS

All NASS reports are available free of charge on the worldwide Internet. For access, connect to the Internet and go to the NASS Home Page at: www.usda.gov/nass/. Select "Today's Reports" or Publications and then Reports Calendar or Publications and then Search, by Title or Subject.

E-MAIL SUBSCRIPTION

All NASS reports are available by subscription free of charge direct to your e-mail address. Starting with the NASS Home Page at www.usda.gov/nass/, click on **Publications**, then click on the **Subscribe by E-mail** button which takes you to the page describing e-mail delivery of reports. Finally, click on **Go to the Subscription Page** and follow the instructions.

PRINTED REPORTS OR DATA PRODUCTS

CALL OUR TOLL-FREE ORDER DESK: 800-999-6779 (U.S. and Canada)
Other areas, please call 703-605-6220 FAX: 703-605-6900
(Visa, MasterCard, check, or money order acceptable for payment.)

ASSISTANCE

For **assistance** with general agricultural statistics or further information about NASS or its products or services, contact the **Agricultural Statistics Hotline** at **800-727-9540**, 7:30 a.m. to 4:00 p.m. ET, or e-mail: nass@nass.usda.gov.

The U.S. Department of Agriculture (USDA) prohibits discrimination in all its programs and activities on the basis of race, color, national origin, age, disability, and where applicable, sex, marital status, familial status, parental status, religion, sexual orientation, genetic information, political beliefs, reprisal, or because all or part of an individual's income is derived from any public assistance program. (Not all prohibited bases apply to all programs.) Persons with disabilities who require alternative means for communication of program information (Braille, large print, audiotope, etc.) should contact USDA's TARGET Center at (202) 720-2600 (voice and TDD).

To file a complaint of discrimination, write to USDA, Director, Office of Civil Rights, 1400 Independence Avenue, S.W., Washington, D.C. 20250-9410, or call (800) 795-3272 (voice) or (202) 720-6382 (TDD). USDA is an equal opportunity provider and employer.