



NASS

FACT FINDERS FOR AGRICULTURE
UNITED STATES DEPARTMENT OF AGRICULTURE

Washington, D.C.

Chickens And Eggs

Released September 23, 2005, by the National Agricultural Statistics Service (NASS), Agricultural Statistics Board, U.S. Department of Agriculture. For information on "Layers and Eggs" call Sharyn Lavender at (202) 720-3244, for "Chicks Hatched" call Jody Roberts at (202) 690-8632, office hours 7:30 a.m. to 4:00 p.m. ET.

August Egg Production Up Slightly

U.S. egg production totaled 7.56 billion during August 2005, up slightly from last year. Production included 6.46 billion table eggs, and 1.10 billion hatching eggs, of which 1.04 billion were broiler-type and 62 million were egg-type. The total number of layers during August 2005 averaged 341 million, down 1 percent from a year earlier. August egg production per 100 layers was 2,219 eggs, up 1 percent from August 2004.

All layers in the U.S. on September 1, 2005, totaled 341 million, down 1 percent from a year ago. The 341 million layers consisted of 283 million layers producing table or market type eggs, 55.5 million layers producing broiler-type hatching eggs, and 2.68 million layers producing egg-type hatching eggs. Rate of lay per day on September 1, 2005, averaged 71.6 eggs per 100 layers, up 1 percent from September 2004.

Egg-Type Chicks Hatched Up 6 Percent

Egg-type chicks hatched during August 2005 totaled 39.0 million, up 6 percent from August 2004. Eggs in incubators totaled 32.5 million on September 1, 2005, down 1 percent from a year ago.

Domestic placements of egg-type pullet chicks for future hatchery supply flocks by leading breeders totaled 261,000 during August 2005, down 18 percent from August 2004.

Broiler-Type Chicks Hatched Up Slightly

Broiler-type chicks hatched during August 2005 totaled 812 million, up slightly from August 2004. Eggs in incubators totaled 652 million on September 1, 2005, down slightly from a year earlier.

Leading breeders placed 7.48 million broiler-type pullet chicks for future domestic hatchery supply flocks during August 2005, up 3 percent from August 2004.

Contents

Page

U.S. Average Number of Layers on Hand and Egg Production	1
U.S. Layers on Hand and Egg Production by Type, Forced Molt, and Pullets	3
Layers on Hand and Eggs Produced by State	5
Egg Production by Type and State	7
Forced Molt	9
Egg-Type Hatchery	11
Egg-Type Intended Placements	13
Broiler-Type Hatchery	13
Broiler-Type Intended Placements	15
Procedures and Reliability	16

**All Layers: Average Number on Hand During the Month,
United States, 2002-05**

Month	2002	2003	2004	2005
	<i>1,000 Layers</i>	<i>1,000 Layers</i>	<i>1,000 Layers</i>	<i>1,000 Layers</i>
Dec ¹	341,243	341,131	339,789	345,960
Jan	340,885	341,996	338,550	348,142
Feb	339,529	341,661	339,647	348,985
Mar	339,434	340,971	341,700	347,272
Apr	338,809	339,268	342,612	344,041
May	337,566	337,356	342,786	342,837
Jun	337,339	335,979	342,835	341,484
Jul	337,849	335,417	342,479	340,160
Aug	338,397	335,565	342,983	340,770
Sep	339,511	335,426	344,118	
Oct	340,461	336,557	345,056	
Nov	340,490	339,387	344,797	

¹ December preceding year.

**Eggs: Production During the Month by Type,
United States, 2004-05 ¹**

Month	Total Eggs		Table Eggs		Hatching Eggs	
	2004	2005	2004	2005	2004	2005
	<i>Million Eggs</i>	<i>Million Eggs</i>	<i>Million Eggs</i>	<i>Million Eggs</i>	<i>Million Eggs</i>	<i>Million Eggs</i>
Dec ²	7,554	7,728	6,492	6,643	1,063	1,085
Jan	7,386	7,617	6,323	6,518	1,063	1,100
Feb	6,901	6,919	5,895	5,906	1,007	1,014
Mar	7,547	7,727	6,453	6,599	1,095	1,129
Apr	7,358	7,384	6,284	6,288	1,074	1,097
May	7,513	7,558	6,393	6,425	1,120	1,133
Jun	7,289	7,346	6,209	6,250	1,080	1,096
Jul	7,557	7,584	6,455	6,465	1,102	1,120
Aug	7,538	7,562	6,443	6,459	1,095	1,104
Sep	7,344		6,282		1,063	
Oct	7,659		6,569		1,090	
Nov	7,482		6,435		1,047	
During Year	89,131		76,236		12,896	

¹ Totals may not add due to rounding.

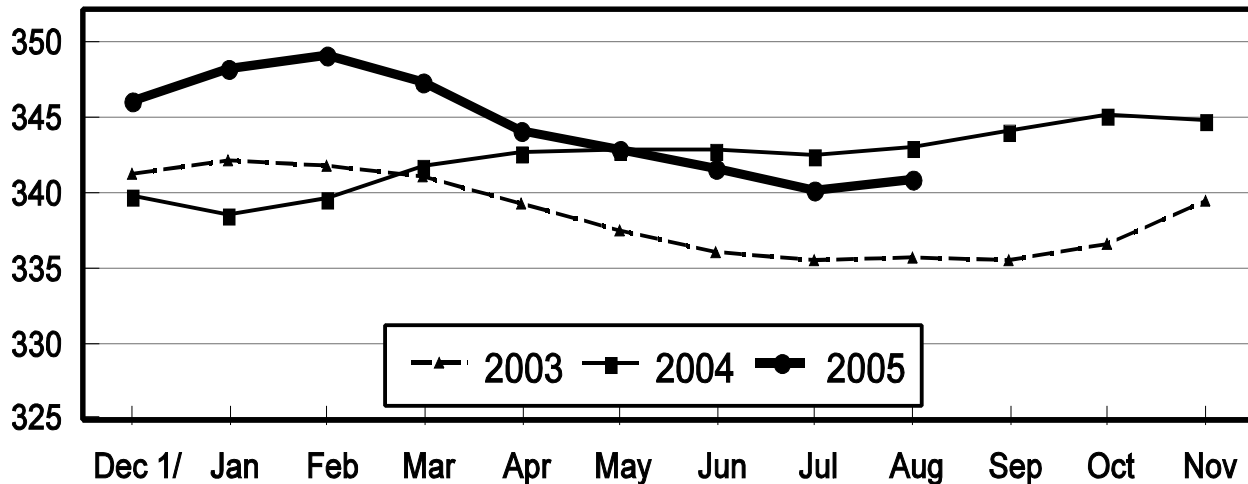
² December preceding year.

Average Number of Layers

United States, 2003 - 2005

During the Month

Million Layers



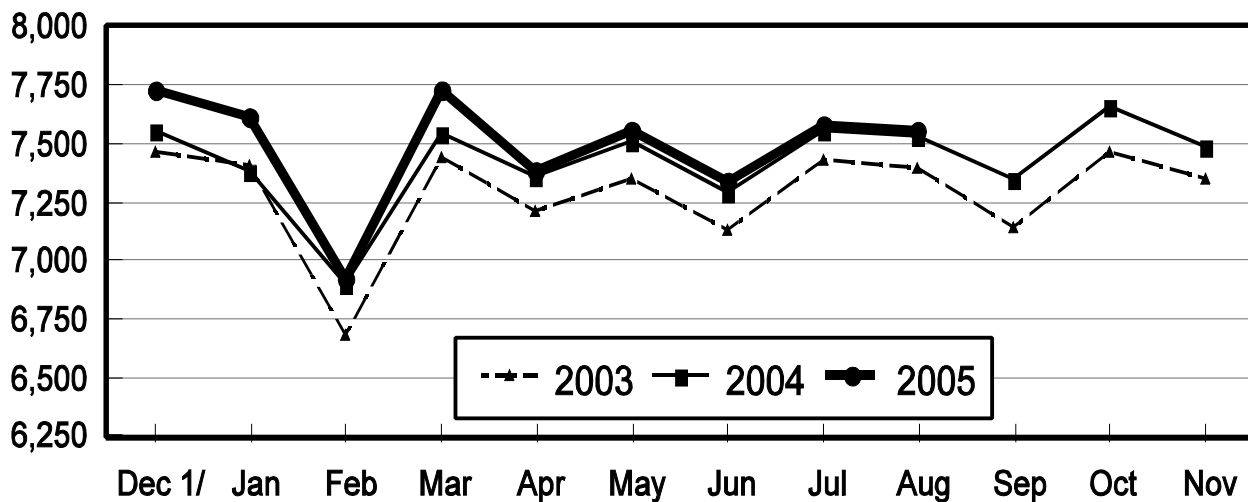
1/ Previous Year

All Egg Production

United States, 2003 - 2005

During the Month

Million Eggs



1/ Previous Year

**Layers and Eggs: Layers on Hand and Eggs Produced by Type,
and Forced Molt, United States, July-August 2004-05 ¹**

Item	Unit	2004	2005 ²	2005 as % of 2004
Layers During Jul	1,000			
All Layers		342,479	340,160	99
Table Egg Type		283,227	281,573	99
Hatching Egg Type		59,252	58,587	99
Broiler-Type Hatching		56,912	55,966	98
Egg-Type Hatching		2,340	2,621	112
Eggs per 100 Layers During Jul	Number			
All Layers		2,207	2,230	101
Table Egg Type		2,279	2,296	101
Hatching Egg Type		1,860	1,912	103
Broiler-Type Hatching		1,838	1,890	103
Egg-Type Hatching		2,393	2,366	99
Eggs Produced During Jul	Million			
All Layers		7,557	7,584	100
Table Egg Type		6,455	6,465	100
Hatching Egg Type		1,102	1,120	102
Broiler-Type Hatching		1,046	1,058	101
Egg-Type Hatching		56	62	111
Layers on Aug 1	1,000			
All Layers		342,522	340,157	99
Table Egg Type		283,508	281,629	99
Hatching Egg Type		59,014	58,528	99
Broiler-Type Hatching		56,594	55,902	99
Egg-Type Hatching		2,420	2,626	109
Eggs per 100 Layers on Aug 1	Number			
All Layers		71.0	71.4	101
Table Egg Type		73.4	73.6	100
Hatching Egg Type		59.6	60.9	102
Broiler-Type Hatching		58.9	60.3	102
Egg-Type Hatching		76.7	74.2	97
Forced Molt Layers on Aug 1	Percent			
Percent Being Molted		4.5	4.3	96
Percent with Molt Completed		23.4	22.0	94
Layers Sold for Slaughter During Jul	1,000	15,643	16,043	103
Layers Rendered, Died, Destroyed, Composted or Disappeared For Any Reason During Jul	1,000	7,253	5,978	82
Pullets on Aug 1	1,000	103,979	101,171	97
Pullets Added During Jul ³	1,000	26,204	23,058	88

¹ Totals may not add due to rounding.

² Revised.

³ Pullet chicks less than 3 days old added to pullet flocks.

**Layers and Eggs: Layers on Hand and Eggs Produced by Type,
and Forced Molt, United States, August-September 2004-05 ¹**

Item	Unit	2004	2005	2005 as % of 2004
Layers During Aug	1,000			
All Layers		342,983	340,770	99
Table Egg Type		284,060	282,402	99
Hatching Egg Type		58,923	58,368	99
Broiler-Type Hatching		56,390	55,714	99
Egg-Type Hatching		2,533	2,654	105
Eggs per 100 Layers During Aug	Number			
All Layers		2,198	2,219	101
Table Egg Type		2,268	2,287	101
Hatching Egg Type		1,858	1,891	102
Broiler-Type Hatching		1,835	1,870	102
Egg-Type Hatching		2,369	2,336	99
Eggs Produced During Aug	Million			
All Layers		7,538	7,562	100
Table Egg Type		6,443	6,459	100
Hatching Egg Type		1,095	1,104	101
Broiler-Type Hatching		1,035	1,042	101
Egg-Type Hatching		60	62	103
Layers on Sep 1	1,000			
All Layers		343,405	341,340	99
Table Egg Type		284,592	283,154	99
Hatching Egg Type		58,813	58,186	99
Broiler-Type Hatching		56,175	55,511	99
Egg-Type Hatching		2,638	2,675	101
Eggs per 100 Layers on Sep 1	Number			
All Layers		70.8	71.6	101
Table Egg Type		73.0	73.8	101
Hatching Egg Type		59.9	60.9	102
Broiler-Type Hatching		59.1	60.2	102
Egg-Type Hatching		76.4	76.3	100
Forced Molt Layers on Sep 1	Percent			
Percent Being Molted		4.5	4.3	96
Percent with Molt Completed		23.3	22.3	96
Layers Sold for Slaughter During Aug	1,000	16,459	13,397	81
Layers Rendered, Died, Destroyed, Composted or Disappeared For Any Reason During Aug	1,000	7,686	7,222	94
Pullets on Sep 1	1,000	100,873	101,226	100
Pullets Added During Aug ²	1,000	22,672	23,549	104

¹ Totals may not add due to rounding.

² Pullet chicks less than 3 days old added to pullet flocks.

**Layers and Eggs: Layers on Hand and Eggs Produced by State
and United States, During July 2004-05**

State	Table Egg Layers in Flocks 30,000 and Above		All Layers ¹		Eggs per 100 for All Layers ¹	
	2004	2005 ²	2004	2005 ²	2004	2005 ²
	<i>1,000</i>	<i>1,000</i>	<i>1,000</i>	<i>1,000</i>	<i>Number</i>	<i>Number</i>
AL	1,870	1,780	9,548	9,220	1,864	1,898
AR	4,544	4,040	15,225	14,414	1,944	1,998
CA	19,813	19,280	20,298	19,813	2,232	2,231
CO	3,310	3,278	3,843	3,795	2,446	2,398
CT	2,718	2,954	2,763	3,010	2,461	2,425
FL	11,073	10,604	11,622	11,080	2,229	2,256
GA	10,965	9,776	20,076	18,919	2,117	2,114
HI	457	460	495	487	2,020	2,033
IL	3,869	4,223	4,101	4,453	2,121	2,336
IN	23,474	22,614	24,214	23,360	2,234	2,226
IA	44,271	46,348	44,963	47,101	2,260	2,314
ME	2,784	4,207	2,836	4,266	2,468	1,594
MD	2,949	2,765	3,079	2,876	2,144	2,399
MI	7,402	7,769	7,652	8,022	2,287	2,319
MN	10,103	10,293	10,638	10,826	2,322	2,291
MS	1,706	1,593	6,825	6,855	1,993	2,042
MO	5,689	5,895	7,034	7,266	2,175	2,230
NE	11,496	11,943	11,571	12,018	2,307	2,297
NY	3,788	3,976	4,108	4,305	2,434	2,416
NC	3,317	3,327	10,817	10,932	1,960	1,994
OH	27,278	27,347	27,755	27,841	2,245	2,266
OK	1,873	1,847	4,064	3,882	1,944	1,984
OR	2,735	2,733	2,917	2,926	2,331	2,461
PA	22,340	21,227	24,139	23,045	2,357	2,382
SC	4,064	3,758	5,246	5,037	2,230	2,045
SD	3,326	2,927	3,526	3,027	2,240	2,213
TX	13,679	12,904	18,124	17,307	2,251	2,271
VA	1,235	1,407	3,193	3,325	1,942	2,226
WA	4,785	4,872	4,849	4,936	2,269	2,391
WI	3,850	4,309	4,348	4,796	2,254	2,419
Oth Sts ³	16,378	15,170	22,610	21,020	2,172	2,236
US	277,141	275,626	342,479	340,160	2,207	2,230

¹ Includes all layers and eggs produced in both table egg and hatching egg flocks regardless of size.

² Revised.

³ Not published separately to avoid disclosing data for individual operations.

**Layers and Eggs: Layers on Hand and Eggs Produced by State
and United States, During August 2004-05**

State	Table Egg Layers in Flocks 30,000 and Above		All Layers ¹		Eggs per 100 for All Layers ¹	
	2004	2005	2004	2005	2004	2005
	<i>1,000</i>	<i>1,000</i>	<i>1,000</i>	<i>1,000</i>	<i>Number</i>	<i>Number</i>
AL	1,944	1,721	9,493	9,074	1,907	1,862
AR	4,448	4,062	14,930	14,208	1,922	1,992
CA	19,679	19,597	20,127	20,126	2,266	2,186
CO	3,361	3,290	3,898	3,843	2,437	2,368
CT	2,641	2,854	2,684	2,911	2,496	2,473
FL	10,963	10,730	11,464	11,210	2,259	2,248
GA	10,918	9,617	20,054	18,849	2,084	2,058
HI	458	467	497	491	2,012	1,935
IL	4,100	4,146	4,341	4,372	2,073	2,356
IN	23,645	22,742	24,411	23,525	2,188	2,176
IA	44,822	46,744	45,556	47,500	2,252	2,301
ME	2,756	4,227	2,808	4,287	2,493	2,123
MD	2,938	2,706	3,066	2,808	2,218	2,457
MI	7,337	7,694	7,587	7,944	2,267	2,253
MN	10,103	10,498	10,653	11,028	2,262	2,267
MS	1,684	1,614	6,853	6,850	1,999	1,971
MO	5,710	5,772	7,066	7,136	2,208	2,186
NE	11,549	11,922	11,624	11,997	2,297	2,334
NY	3,837	3,965	4,155	4,291	2,431	2,424
NC	3,277	3,458	10,757	11,061	1,962	1,971
OH	27,428	27,499	27,911	28,000	2,225	2,286
OK	1,906	1,884	4,134	3,859	1,959	1,995
OR	2,746	2,739	2,941	2,932	2,414	2,422
PA	22,182	21,516	23,964	23,371	2,366	2,323
SC	4,116	3,640	5,228	4,825	2,295	2,135
SD	3,321	2,960	3,521	3,060	2,244	2,255
TX	13,681	12,847	18,088	17,209	2,222	2,255
VA	1,198	1,394	3,113	3,347	1,960	2,181
WA	4,865	4,804	4,928	4,867	2,110	2,383
WI	4,092	4,250	4,602	4,736	2,173	2,344
Oth Sts ²	16,268	15,099	22,529	21,053	2,157	2,261
US	277,973	276,458	342,983	340,770	2,198	2,219

¹ Includes all layers and eggs produced in both table egg and hatching egg flocks regardless of size.

² Not published separately to avoid disclosing data for individual operations.

**Egg Production: By Type, State, and United States,
July 2004-05 ¹**

State	Total Production		Table Eggs ²		Hatching Eggs ²	
	2004	2005 ³	2004	2005 ³	2004	2005 ³
	<i>Million Eggs</i>	<i>Million Eggs</i>	<i>Million Eggs</i>	<i>Million Eggs</i>	<i>Million Eggs</i>	<i>Million Eggs</i>
AL	178	175	39	37	139	138
AR	296	288	107	97	189	191
CA	453	442				
CO	94	91				
CT	68	73				
FL	259	250	249	242	10	8
GA	425	400	251	224	174	176
HI	10.0	9.9	10.0	9.9	0	0
IL	87	104	83	100	4	4
IN	541	520	529	508	12	12
IA	1,016	1,090				
ME	70	68				
MD	66	69	64	67	2	2
MI	175	186				
MN	247	248	239	240	8	8
MS	136	140	41	38	95	102
MO	153	162				
NE	267	276	267	276	0	0
NY	100	104				
NC	212	218	79	80	133	138
OH	623	631				
OK	79	77	44	43	35	34
OR	68	72	66	70	2	2
PA	569	549	551	531	18	18
SC	117	103	95	81	22	22
SD	79	67	79	67	0	0
TX	408	393				
VA	62	74	29	37	33	37
WA	110	118				
WI	98	116				
Oth Sts ⁴	491	470	397	379	95	92
US	7,557	7,584	6,455	6,465	1,102	1,120

¹ Totals may not add due to rounding.

² Data by type of flock not shown for some States to avoid disclosing individual operations.

³ Revised.

⁴ Not published separately to avoid disclosing data for individual operations.

**Egg Production: By Type, State, and United States,
August 2004-05 ¹**

State	Total Production		Table Eggs ²		Hatching Eggs ²	
	2004	2005	2004	2005	2004	2005
	<i>Million Eggs</i>	<i>Million Eggs</i>	<i>Million Eggs</i>	<i>Million Eggs</i>	<i>Million Eggs</i>	<i>Million Eggs</i>
AL	181	169	43	35	138	134
AR	287	283	104	97	183	186
CA	456	440				
CO	95	91				
CT	67	72				
FL	259	252	251	245	8	7
GA	418	388	245	211	173	177
HI	10.0	9.5	10.0	9.5	0	0
IL	90	103	86	100	4	3
IN	534	512	522	499	12	13
IA	1,026	1,093				
ME	70	91				
MD	68	69	66	67	2	2
MI	172	179				
MN	241	250	233	242	8	8
MS	137	135	40	37	97	98
MO	156	156				
NE	267	280	267	280	0	0
NY	101	104				
NC	211	218	80	83	131	135
OH	621	640				
OK	81	77	45	44	36	33
OR	71	71	68	69	3	2
PA	567	543	550	525	17	18
SC	120	103	100	83	20	20
SD	79	69	79	69	0	0
TX	402	388				
VA	61	73	26	36	35	37
WA	104	116				
WI	100	111				
Oth Sts ³	486	476	392	384	95	93
US	7,538	7,562	6,443	6,459	1,095	1,104

¹ Totals may not add due to rounding.

² Data by type of flock not shown for some States to avoid disclosing individual operations.

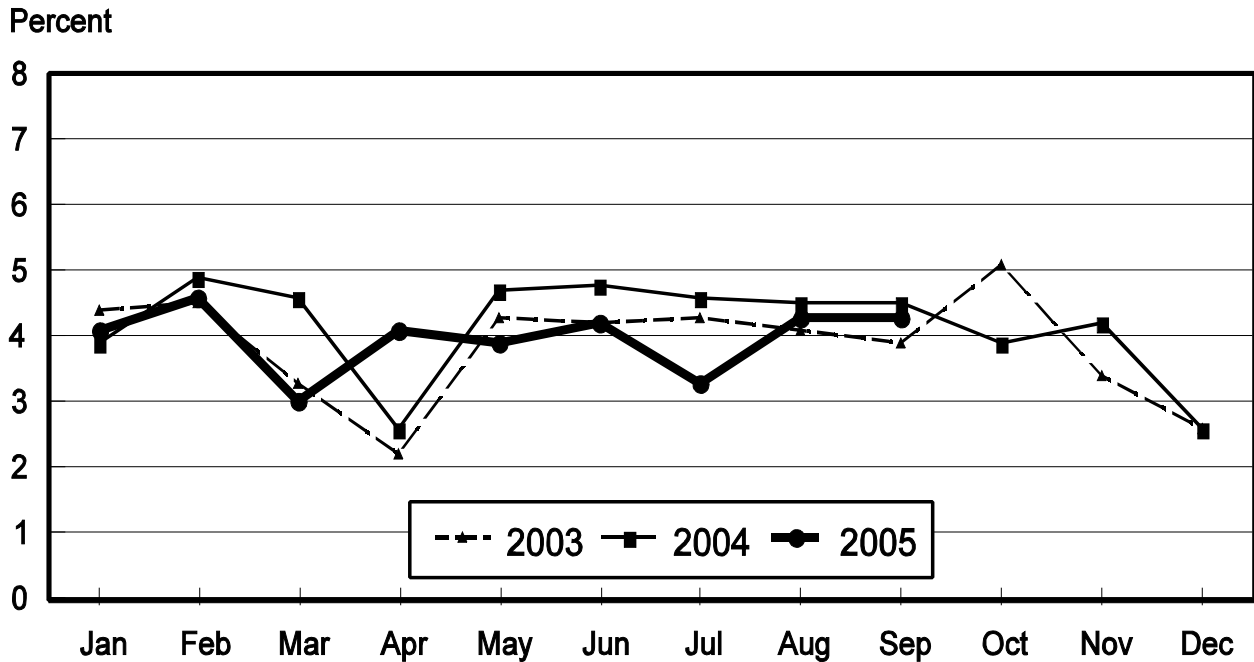
³ Not published separately to avoid disclosing data for individual operations.

**Forced Molt: Percent of All Layers by Month,
United States, 2004-05 ¹**

Month	Percent Being Molted		Percent with Molt Completed	
	2004	2005	2004	2005
	<i>Percent</i>	<i>Percent</i>	<i>Percent</i>	<i>Percent</i>
Jan	3.9	4.1	22.8	23.2
Feb	4.9	4.6	22.7	21.7
Mar	4.6	3.0	23.4	22.8
Apr	2.6	4.1	23.4	22.6
May	4.7	4.0	22.2	22.3
Jun	4.8	4.2	23.1	23.0
Jul	4.6	3.3	24.0	22.6
Aug	4.5	4.3	23.4	22.0
Sep	4.5	4.3	23.3	22.3
Oct	3.9		23.6	
Nov	4.2		23.7	
Dec	2.6		23.7	

¹ As of first of month.

**All Layers: Percent Being Molted
United States, 2003 - 2005
First of the Month**



**Forced Molt: Percent of All Layers by State
and United States, September 2004-05 ¹**

State	Percent Being Molted		Percent with Molt Completed	
	2004	2005	2004	2005
	<i>Percent</i>	<i>Percent</i>	<i>Percent</i>	<i>Percent</i>
AL	1.3	2.0	4.5	5.0
AR	2.0	3.0	9.5	10.5
CA	10.5	9.5	32.5	31.5
CO	6.5	6.5	19.4	21.0
CT	3.5	0.0	11.5	10.0
FL	3.5	4.0	27.5	30.0
GA	4.0	4.0	15.0	13.5
HI	4.5	9.5	50.0	46.5
IL	2.5	2.0	37.5	30.0
IN	5.0	2.5	30.5	28.5
IA	5.0	6.5	35.5	32.5
ME	0.0	0.0	0.0	0.0
MD	10.5	7.5	28.5	40.0
MI	7.0	8.5	24.5	27.0
MN	5.0	3.0	17.0	22.0
MS	2.0	2.0	10.5	9.0
MO	3.0	1.0	21.5	21.0
NE	3.5	4.5	20.0	25.0
NY	1.5	3.5	8.0	8.5
NC	1.0	1.0	9.0	8.5
OH	5.0	3.5	26.5	18.0
OK	0.0	0.0	5.0	5.5
OR	2.5	8.5	35.5	32.0
PA	3.5	5.0	15.5	16.5
SC	17.5	3.0	27.5	20.0
SD	5.0	3.0	20.0	20.5
TX	3.0	3.0	20.5	21.5
VA	0.0	6.0	17.5	13.5
WA	7.0	3.5	42.5	43.0
WI	5.0	8.0	31.5	25.5
Oth Sts ²	4.1	3.5	26.8	28.0
US	4.5	4.3	23.3	22.3

¹ As of first of month.

² Not published separately to avoid disclosing data for individual operations.

**Hatchery Production: Eggs in Incubators, Chicks Hatched,
and Placements by Type, United States, August-September 2004-05**

Item	2004	2005	2005 as % of 2004
	<i>1,000</i>	<i>1,000</i>	<i>Percent</i>
Egg-Type			
Eggs in Incubators on Sep 1	32,711	32,491	99
Chicks Hatched During Aug	36,854	38,953	106
Chicks Hatched Jan thru Aug	289,717	298,208	103
Pullets Hatched During Aug for Intended Placements in Hatchery Supply Flocks	318	261	82
7-18 Months Earlier ¹	3,112	3,028	97
Broiler-Type			
Eggs in Incubators on Sep 1	654,587	652,451	100
Chicks Hatched During Aug	810,285	811,678	100
Chicks Hatched Jan thru Aug	6,282,979	6,371,601	101
Pullets Hatched During Aug for Intended Placements in Hatchery Supply Flocks	7,280	7,484	103
7-15 Months Earlier ²	62,096	62,972	101

¹ 2005 includes pullet chicks hatched Feb 2004 through Jan 2005.

² 2005 includes pullet chicks hatched May 2004 through Jan 2005.

**Egg-Type Eggs in Incubators: By Region and United States,
September 1, 2004-05**

Region	2004	2005	2005 as % of 2004
	<i>1,000</i>	<i>1,000</i>	<i>Percent</i>
North Atlantic	4,900	5,316	108
E North Central	6,171	5,818	94
W North Central	6,898	7,177	104
South Atlantic	3,784	3,765	99
South Central	5,069	5,235	103
West	5,889	5,180	88
US	32,711	32,491	99

Regions:

North Atlantic = CT, ME, MA, NH, NJ, NY, PA, RI, VT.

E North Central = IL, IN, MI, OH, WI.

W North Central = IA, KS, MN, MO, NE, ND, SD.

South Atlantic = DE, FL, GA, MD, NC, SC, VA, WV.

South Central = AL, AR, KY, LA, MS, OK, TN, TX.

West = AK, AZ, CA, CO, HI, ID, MT, NM, NV, OR, UT, WA, WY.

**Egg-Type Chicks Hatched: By State and United States,
August 2004-05**

State	During August			Jan-Aug		
	2004	2005	2005 as % of 2004	2004	2005	2005 as % of 2004
	<i>1,000</i>	<i>1,000</i>	<i>Percent</i>	<i>1,000</i>	<i>1,000</i>	<i>Percent</i>
FL	617	857	139	5,129	5,577	109
GA	2,414	2,311	96	19,044	18,296	96
IN	4,837	5,460	113	39,776	41,081	103
IA	5,881	6,579	112	48,914	50,400	103
MN	810	1,130	140	7,219	8,513	118
PA	4,497	5,841	130	40,750	39,735	98
Oth Sts ¹	17,798	16,775	94	128,885	134,606	104
US	36,854	38,953	106	289,717	298,208	103

¹ Not published separately to avoid disclosing data for individual operations.

Egg-Type Chicks Hatched: By Month, United States, 2003-05

Month	By Months				Cumulative			
	2003	2004	2005	2005 as % of 2004	2003	2004	2005	2005 as % of 2004
	<i>1,000</i>	<i>1,000</i>	<i>1,000</i>	<i>Percent</i>	<i>1,000</i>	<i>1,000</i>	<i>1,000</i>	<i>Percent</i>
Jan	33,521	35,155	37,936	108	33,521	35,155	37,936	108
Feb	30,474	31,923	33,932	106	63,995	67,078	71,868	107
Mar	36,775	37,545	41,824	111	100,770	104,623	113,692	109
Apr	37,820	37,466	38,267	102	138,590	142,089	151,959	107
May	37,630	38,347	37,449	98	176,220	180,436	189,408	105
Jun	36,602	37,508	34,537	92	212,822	217,944	223,945	103
Jul	35,578	34,919	35,310	101	248,400	252,863	259,255	103
Aug	33,199	36,854	38,953	106	281,599	289,717	298,208	103
Sep	35,763	36,631			317,362	326,348		
Oct	34,812	34,866			352,174	361,214		
Nov	30,241	38,758			382,415	399,972		
Dec	33,588	37,332			416,003	437,304		

**Intended Placements: Egg-Type Pullet Chicks for Hatchery Supply
Flocks by Month and Total, United States, 2003-05 ¹**

Month	Pullet Chicks Hatched			2005 as % of 2004	Cumulative Potential Placements Relative to Current Supply Flocks 7-18 Months Earlier ²		
	2003	2004	2005		2004	2005	2006
	<i>1,000</i>	<i>1,000</i>	<i>1,000</i>	<i>Percent</i>	<i>1,000</i>	<i>1,000</i>	<i>1,000</i>
Jan	210	124	157	127	3,012	3,088	2,834
Feb	225	285	208	73	2,960	3,080	2,854
Mar	319	401	314	78	2,927	3,210	2,797
Apr	280	343	308	90	2,923	3,142	
May	289	157	190	121	3,047	3,100	
Jun	309	212	184	87	3,139	3,006	
Jul	230	222	242	109	3,198	2,995	
Aug	188	318	261	82	3,112	3,028	
Sep	273	205			3,172	2,951	
Oct	310	268			3,254	2,864	
Nov	319	225			3,317	2,829	
Dec	246	235			3,185	2,862	
Total	3,198	2,995					

¹ Reported by leading breeders. Coverage may not be 100 percent. Includes expected pullet chicks from eggs sold during the preceding month at the rate of 125 pullet chicks per 30 dozen case of eggs.

² For August 2005, includes breeder pullet chicks hatched Feb 2004 through Jan 2005. The 7-18 months represent the first laying cycle. Molting and additional laying cycles will increase the cumulative potential placements.

**Broiler-Type Eggs in Incubators: By Region
and United States, September 1, 2004-05**

Region	2004	2005	2005 as % of 2004
	<i>1,000</i>	<i>1,000</i>	<i>Percent</i>
North Atlantic	12,520	12,371	99
E North Central	9,426	9,101	97
W North Central	23,895	24,213	101
South Atlantic	234,024	235,357	101
South Central	351,259	345,570	98
West	23,463	25,839	110
US	654,587	652,451	100

**Broiler-Type Chicks Hatched: By State
and United States, August 2004-05**

State	During August			Jan-Aug		
	2004	2005	2005 as % of 2004	2004	2005	2005 as % of 2004
	<i>1,000</i>	<i>1,000</i>	<i>Percent</i>	<i>1,000</i>	<i>1,000</i>	<i>Percent</i>
AL	113,951	117,071	103	881,503	895,984	102
AR	115,625	112,461	97	905,332	896,531	99
DE	13,652	15,013	110	108,910	116,852	107
FL	4,901	5,080	104	39,088	39,092	100
GA	123,260	121,747	99	957,656	964,838	101
KY	26,722	26,262	98	203,919	205,231	101
LA	14,198	15,225	107	110,100	118,087	107
MD	32,501	32,502	100	252,239	252,452	100
MS	74,516	70,772	95	574,998	567,119	99
NC	66,832	67,182	101	528,686	532,379	101
OK	24,827	24,341	98	188,623	189,337	100
PA	13,742	15,184	110	104,574	114,892	110
SC	14,339	18,634	130	106,972	145,835	136
TX	56,867	55,091	97	437,438	442,304	101
VA	25,068	23,544	94	190,615	188,199	99
CA, MO, TN, & WV	64,955	68,072	105	509,201	441,164	87
19 Sts ¹	785,956	788,181	100	6,099,854	6,110,296	100
Oth Sts ²	24,329	23,497	97	183,125	261,305	143
US	810,285	811,678	100	6,282,979	6,371,601	101

¹ States in the weekly hatchery production estimating program.

² Not published separately to avoid disclosing data for individual operations.

Broiler-Type Chicks Hatched: By Month, United States, 2003-05

Month	By Months				Cumulative			
	2003	2004	2005	2005 as % of 2004	2003	2004	2005	2005 as % of 2004
	<i>1,000</i>	<i>1,000</i>	<i>1,000</i>	<i>Percent</i>	<i>1,000</i>	<i>1,000</i>	<i>1,000</i>	<i>Percent</i>
Jan	759,674	774,004	796,026	103	759,674	774,004	796,026	103
Feb	693,549	728,401	731,274	100	1,453,223	1,502,405	1,527,300	102
Mar	774,354	791,915	815,782	103	2,227,577	2,294,320	2,343,082	102
Apr	760,638	774,629	789,780	102	2,988,215	3,068,949	3,132,862	102
May	792,813	810,484	823,406	102	3,781,028	3,879,433	3,956,268	102
Jun	774,679	786,603	796,001	101	4,555,707	4,666,036	4,752,269	102
Jul	777,838	806,658	807,654	100	5,333,545	5,472,694	5,559,923	102
Aug	784,107	810,285	811,678	100	6,117,652	6,282,979	6,371,601	101
Sep	739,515	769,934			6,857,167	7,052,913		
Oct	735,235	756,895			7,592,402	7,809,808		
Nov	707,891	730,353			8,300,293	8,540,161		
Dec	780,321	793,090			9,080,614	9,333,251		

**Intended Placements: Broiler-Type Pullet Chicks for Hatchery
Supply Flocks by Month and Total, 2003-05 ¹**

Month	Pullet Chicks Hatched			2005 as % of 2004	Cumulative Potential Placements Relative to Current Supply Flocks 7-15 Months Earlier ²		
	2003	2004	2005		2004	2005	2006
	<i>1,000</i>	<i>1,000</i>	<i>1,000</i>	<i>Percent</i>	<i>1,000</i>	<i>1,000</i>	<i>1,000</i>
US Place- ments							
Jan	6,269	6,811	6,409	94	60,300	62,084	62,860
Feb	6,659	7,340	7,325	100	61,106	62,460	63,060
Mar	6,888	6,815	7,077	104	61,421	62,794	63,416
Apr	6,735	6,402	6,800	106	61,600	63,574	
May	7,323	7,590	7,783	103	61,643	63,220	
Jun	6,748	6,890	7,109	103	61,930	63,008	
Jul	7,071	6,688	6,657	100	62,020	62,965	
Aug	7,253	7,280	7,484	103	62,096	62,972	
Sep	6,654	7,758			62,113	62,707	
Oct	6,312	6,457			62,180	62,894	
Nov	6,946	7,128			61,511	63,006	
Dec	6,978	6,772			61,848	63,509	
Annual Total	81,836	83,931					
Total Place- ments ³							
Jan	7,388	7,812	7,804	100			
Feb	8,094	8,251	8,664	105			
Mar	8,400	7,801	8,709	112			
Apr	8,062	7,288	7,995	110			
May	8,604	8,693	8,995	103			
Jun	8,341	8,590	8,571	100			
Jul	8,555	8,003	7,846	98			
Aug	8,608	8,416	9,084	108			
Sep	8,338	9,184					
Oct	7,695	7,678					
Nov	8,246	8,411					
Dec	8,185	8,263					
Annual Total	98,516	98,390					

¹ Reported by leading breeders. Coverage may not be 100 percent. Includes expected pullet chicks from eggs sold during the preceding month at the rate of 125 pullet chicks per 30 dozen case of eggs.

² For Aug 2005, includes breeder pullet chicks hatched May 2004 through Jan 2005.

³ U.S. production of intended placements worldwide.

Procedures and Reliability

Data Sources: Primary data for the "**Chickens and Eggs**" report are from weekly and/or monthly questionnaires sent to producers. An attempt is made to collect information for layer and egg estimates from each known contractor and independent producer who has at least 30,000 table egg layers, flocks of hatchery supply layers, or pullet only operations with at least 500 pullets. Coverage for operations with less than 30,000 table egg layers are estimated each month based on data reported in December. Approximately 900 contractors, independent egg producers, and pullet only operations are contacted each month. All known hatcheries, approximately 330, are contacted for information on a weekly and/or monthly basis.

Revisions: The previous month's estimates are subject to revision if late reports or corrected data indicates a different level. Additionally, revisions after the monthly report will be made at the end of the marketing year and published in the annual reports of "**Chickens and Eggs Summary**" and "**Hatchery Production**".

Procedures and Reliability: Operations are mailed a questionnaire and given adequate time to respond by mail. Those that do not respond are phoned. Great care is exercised to ensure that all operations are accounted for during each survey period. However, there are usually missing reports that must be accounted for in the estimates.

Sound statistical methodology is employed to derive estimates from the reported data. All data are checked for unusual values. All operations' data are compared to their own past operating profiles and also to trends from other operations. Data for missing operations are estimated based on similar operations or historical data. Survey data are subject to non-sampling errors such as omissions and mistakes in reporting and in processing. While these errors cannot be measured directly, they are minimized by reviewing all data for consistency and reasonableness.

Egg-type chicks hatched consist of all chicks of egg-type domesticated breeds including males and chicks destined for hatchery supply flocks and research purposes. The relationship of chicks hatched to chicken inventory and poultry marketings is carefully monitored. The disposition of egg-type chicks hatched prior to placement into the laying flock can vary significantly, which can make comparisons to changes in layer inventory inconsistent over time.

Intended placement data reported by leading breeders include pullet chicks expected from eggs sold the preceding month. The breeders in this report account for a large percentage of replacement pullets for hatchery supply flocks. Production of replacement pullets by these breeders indicates the number of pullets available to hatchery supply flocks several months before the pullets will actually move into the flocks. "Hatchery Supply Flocks" include all generations of layers which could lay eggs to supply a hatchery. This includes the generations of parents, grandparents, great-grandparents, pedigree, etc. Also included are research flocks, vaccine flocks, and specific pathogen-free flocks. The broiler cumulative potential placements are a moving total of the intended placements 7-15 months earlier. The egg-type cumulative potential placements of 7-18 months represent the first laying cycle. Molting and additional laying cycles will increase the cumulative potential placements of egg-type hatching flocks.

ACCESS TO REPORTS!!

For your convenience, there are several ways to obtain NASS reports, data products, and services:

INTERNET ACCESS

All NASS reports are available free of charge on the worldwide Internet. For access, connect to the Internet and go to the NASS Home Page at: www.usda.gov/nass/. Select "Today's Reports" or Publications and then Reports Calendar or Publications and then Search, by Title or Subject.

E-MAIL SUBSCRIPTION

All NASS reports are available by subscription free of charge direct to your e-mail address. Starting with the NASS Home Page at www.usda.gov/nass/, click on **Publications**, then click on the **Subscribe by E-mail** button which takes you to the page describing e-mail delivery of reports. Finally, click on **Go to the Subscription Page** and follow the instructions.

PRINTED REPORTS OR DATA PRODUCTS

CALL OUR TOLL-FREE ORDER DESK: 800-999-6779 (U.S. and Canada)
Other areas, please call 703-605-6220 FAX: 703-605-6900
(Visa, MasterCard, check, or money order acceptable for payment.)

ASSISTANCE

For **assistance** with general agricultural statistics or further information about NASS or its products or services, contact the **Agricultural Statistics Hotline** at **800-727-9540**, 7:30 a.m. to 4:00 p.m. ET, or e-mail: nass@nass.usda.gov.

The U.S. Department of Agriculture (USDA) prohibits discrimination in all its programs and activities on the basis of race, color, national origin, age, disability, and where applicable, sex, marital status, familial status, parental status, religion, sexual orientation, genetic information, political beliefs, reprisal, or because all or part of an individual's income is derived from any public assistance program. (Not all prohibited bases apply to all programs.) Persons with disabilities who require alternative means for communication of program information (Braille, large print, audiotape, etc.) should contact USDA's TARGET Center at (202) 720-2600 (voice and TDD).

To file a complaint of discrimination, write to USDA, Director, Office of Civil Rights, 1400 Independence Avenue, S.W., Washington, D.C. 20250-9410, or call (800) 795-3272 (voice) or (202) 720-6382 (TDD). USDA is an equal opportunity provider and employer.