



Chickens And Eggs

Released October 21, 2005, by the National Agricultural Statistics Service (NASS), Agricultural Statistics Board, U.S. Department of Agriculture. For information on "Layers and Eggs" call Sharyn Lavender at (202) 720-3244, for "Chicks Hatched" call Jody Roberts at (202) 690-8632, office hours 7:30 a.m. to 4:00 p.m. ET.

September Egg Production Up Slightly

U.S. egg production totaled 7.38 billion during September 2005, up slightly from last year. Production included 6.31 billion table eggs, and 1.07 billion hatching eggs, of which 1.01 billion were broiler-type and 59 million were egg-type. The total number of layers during September 2005 averaged 342 million, down 1 percent from a year earlier. September egg production per 100 layers was 2,155 eggs, up 1 percent from September 2004.

All layers in the U.S. on October 1, 2005, totaled 343 million, down slightly from a year ago. The 343 million layers consisted of 286 million layers producing table or market type eggs, 55.1 million layers producing broiler-type hatching eggs, and 2.46 million layers producing egg-type hatching eggs. Rate of lay per day on October 1, 2005, averaged 71.9 eggs per 100 layers, up 1 percent from October 1, 2004.

Egg-Type Chicks Hatched Down 8 Percent

Egg-type chicks hatched during September 2005 totaled 33.8 million, down 8 percent from September 2004. Eggs in incubators totaled 31.8 million on October 1, 2005, down 5 percent from a year ago.

Domestic placements of egg-type pullet chicks for future hatchery supply flocks by leading breeders totaled 375,000 during September 2005, up 83 percent from September 2004.

Broiler-Type Chicks Hatched Down Slightly

Broiler-type chicks hatched during September 2005 totaled 770 million, down slightly from September 2004. Eggs in incubators totaled 632 million on October 1, 2005, up 2 percent from a year earlier.

Leading breeders placed 7.13 million broiler-type pullet chicks for future domestic hatchery supply flocks during September 2005, down 8 percent from September 2004.

Contents

Page

U.S. Average Number of Layers on Hand and Egg Production	1
U.S. Layers on Hand and Egg Production by Type, Forced Molt, and Pullets	3
Layers on Hand and Eggs Produced by State	5
Egg Production by Type and State	7
Forced Molt	9
Egg-Type Hatchery	11
Egg-Type Intended Placements	13
Broiler-Type Hatchery	13
Broiler-Type Intended Placements	15
Procedures and Reliability	16

**All Layers: Average Number on Hand During the Month,
United States, 2002-05**

Month	2002	2003	2004	2005
	<i>1,000 Layers</i>	<i>1,000 Layers</i>	<i>1,000 Layers</i>	<i>1,000 Layers</i>
Dec ¹	341,243	341,131	339,789	345,960
Jan	340,885	341,996	338,550	348,142
Feb	339,529	341,661	339,647	348,985
Mar	339,434	340,971	341,700	347,272
Apr	338,809	339,268	342,612	344,041
May	337,566	337,356	342,786	342,837
Jun	337,339	335,979	342,835	341,484
Jul	337,849	335,417	342,479	340,160
Aug	338,397	335,565	342,983	340,898
Sep	339,511	335,426	344,118	342,382
Oct	340,461	336,557	345,056	
Nov	340,490	339,387	344,797	

¹ December preceding year.

**Eggs: Production During the Month by Type,
United States, 2004-05 ¹**

Month	Total Eggs		Table Eggs		Hatching Eggs	
	2004	2005	2004	2005	2004	2005
	<i>Million Eggs</i>	<i>Million Eggs</i>	<i>Million Eggs</i>	<i>Million Eggs</i>	<i>Million Eggs</i>	<i>Million Eggs</i>
Dec ²	7,554	7,728	6,492	6,643	1,063	1,085
Jan	7,386	7,617	6,323	6,518	1,063	1,100
Feb	6,901	6,919	5,895	5,906	1,007	1,014
Mar	7,547	7,727	6,453	6,599	1,095	1,129
Apr	7,358	7,384	6,284	6,288	1,074	1,097
May	7,513	7,558	6,393	6,425	1,120	1,133
Jun	7,289	7,346	6,209	6,250	1,080	1,096
Jul	7,557	7,584	6,455	6,465	1,102	1,120
Aug	7,538	7,565	6,443	6,462	1,095	1,104
Sep	7,344	7,379	6,282	6,309	1,063	1,071
Oct	7,659		6,569		1,090	
Nov	7,482		6,435		1,047	
During Year	89,131		76,236		12,896	

¹ Totals may not add due to rounding.

² December preceding year.

Table Egg Layers

United States, 2003 - 2005

First of the Month

Million Layers

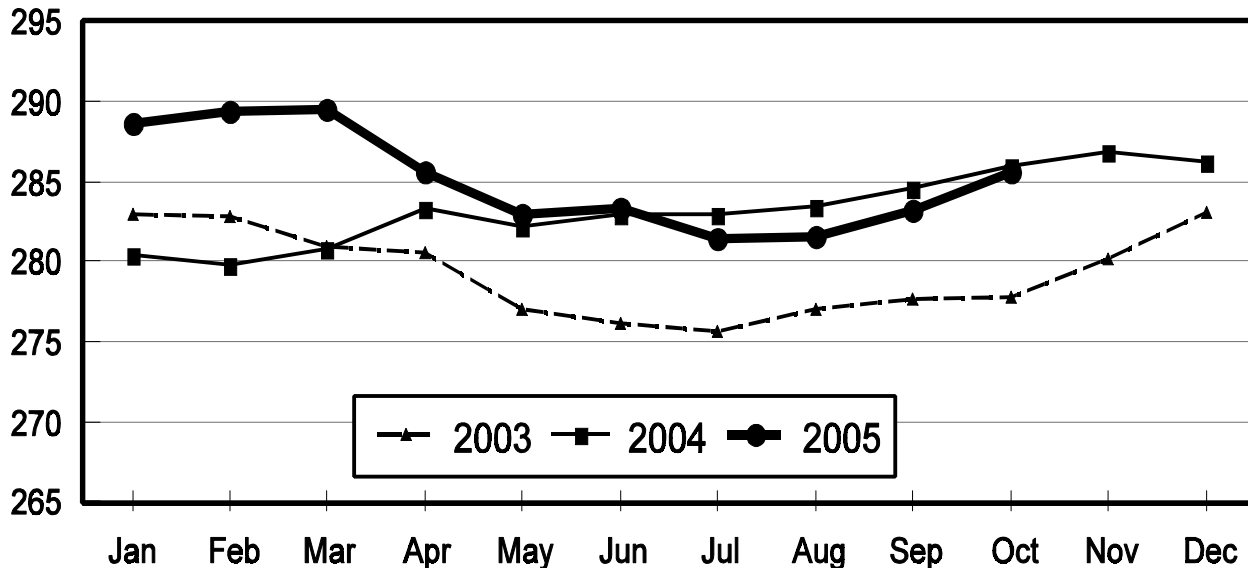
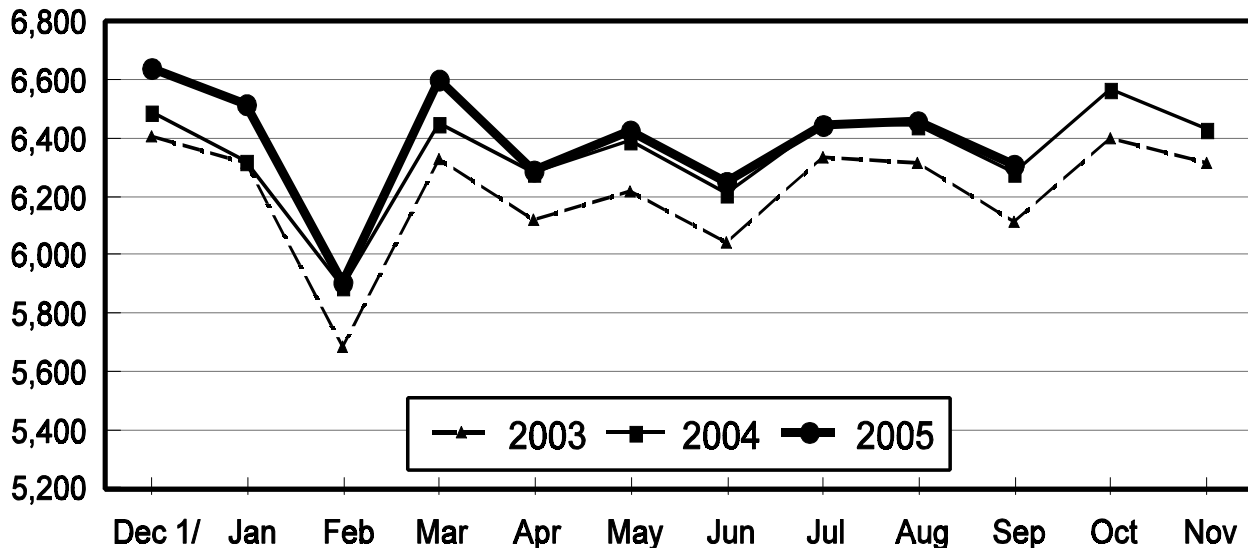


Table Egg Production

United States, 2003 - 2005

During the Month

Million Eggs



1/ Previous Year

**Layers and Eggs: Layers on Hand and Eggs Produced by Type,
and Forced Molt, United States, August-September 2004-05 ¹**

Item	Unit	2004	2005 ²	2005 as % of 2004
Layers During Aug	1,000			
All Layers		342,983	340,898	99
Table Egg Type		284,060	282,552	99
Hatching Egg Type		58,923	58,346	99
Broiler-Type Hatching		56,390	55,692	99
Egg-Type Hatching		2,533	2,654	105
Eggs per 100 Layers During Aug	Number			
All Layers		2,198	2,219	101
Table Egg Type		2,268	2,287	101
Hatching Egg Type		1,858	1,892	102
Broiler-Type Hatching		1,835	1,871	102
Egg-Type Hatching		2,369	2,336	99
Eggs Produced During Aug	Million			
All Layers		7,538	7,565	100
Table Egg Type		6,443	6,462	100
Hatching Egg Type		1,095	1,104	101
Broiler-Type Hatching		1,035	1,042	101
Egg-Type Hatching		60	62	103
Layers on Sep 1	1,000			
All Layers		343,405	341,596	99
Table Egg Type		284,592	283,454	100
Hatching Egg Type		58,813	58,142	99
Broiler-Type Hatching		56,175	55,467	99
Egg-Type Hatching		2,638	2,675	101
Eggs per 100 Layers on Sep 1	Number			
All Layers		70.8	71.6	101
Table Egg Type		73.0	73.8	101
Hatching Egg Type		59.9	61.0	102
Broiler-Type Hatching		59.1	60.2	102
Egg-Type Hatching		76.4	76.3	100
Forced Molt Layers on Sep 1	Percent			
Percent Being Molted		4.5	4.4	98
Percent with Molt Completed		23.3	22.4	96
Layers Sold for Slaughter During Aug	1,000	16,459	13,964	85
Layers Rendered, Died, Destroyed, Composted or Disappeared For Any Reason During Aug	1,000	7,686	7,260	94
Pullets on Sep 1	1,000	100,873	101,304	100
Pullets Added During Aug ³	1,000	22,672	23,575	104

¹ Totals may not add due to rounding.

² Revised.

³ Pullet chicks less than 3 days old added to pullet flocks.

**Layers and Eggs: Layers on Hand and Eggs Produced by Type,
and Forced Molt, United States, September-October 2004-05 ¹**

Item	Unit	2004	2005	2005 as % of 2004
Layers During Sep	1,000			
All Layers		344,118	342,382	99
Table Egg Type		285,271	284,534	100
Hatching Egg Type		58,847	57,848	98
Broiler-Type Hatching		56,223	55,275	98
Egg-Type Hatching		2,624	2,573	98
Eggs per 100 Layers During Sep	Number			
All Layers		2,134	2,155	101
Table Egg Type		2,202	2,217	101
Hatching Egg Type		1,806	1,851	102
Broiler-Type Hatching		1,784	1,831	103
Egg-Type Hatching		2,287	2,293	100
Eggs Produced During Sep	Million			
All Layers		7,344	7,379	100
Table Egg Type		6,282	6,309	100
Hatching Egg Type		1,063	1,071	101
Broiler-Type Hatching		1,003	1,012	101
Egg-Type Hatching		60	59	98
Layers on Oct 1	1,000			
All Layers		344,794	343,130	100
Table Egg Type		285,931	285,600	100
Hatching Egg Type		58,863	57,530	98
Broiler-Type Hatching		56,258	55,067	98
Egg-Type Hatching		2,605	2,463	95
Eggs per 100 Layers on Oct 1	Number			
All Layers		71.3	71.9	101
Table Egg Type		73.6	73.8	100
Hatching Egg Type		60.1	62.0	103
Broiler-Type Hatching		59.3	61.3	103
Egg-Type Hatching		77.6	78.7	101
Forced Molt Layers on Oct 1	Percent			
Percent Being Molted		3.9	3.9	100
Percent with Molt Completed		23.6	23.4	99
Layers Sold for Slaughter During Sep	1,000	16,400	16,406	100
Layers Rendered, Died, Destroyed, Composted or Disappeared For Any Reason During Sep	1,000	7,701	6,959	90
Pullets on Oct 1	1,000	98,318	98,630	100
Pullets Added During Sep ²	1,000	23,784	23,803	100

¹ Totals may not add due to rounding.

² Pullet chicks less than 3 days old added to pullet flocks.

**Layers and Eggs: Layers on Hand and Eggs Produced by State
and United States, During August 2004-05**

State	Table Egg Layers in Flocks 30,000 and Above		All Layers ¹		Eggs per 100 for All Layers ¹	
	2004	2005 ²	2004	2005 ²	2004	2005 ²
	<i>1,000</i>	<i>1,000</i>	<i>1,000</i>	<i>1,000</i>	<i>Number</i>	<i>Number</i>
AL	1,944	1,721	9,493	9,074	1,907	1,862
AR	4,448	4,062	14,930	14,186	1,922	1,995
CA	19,679	19,597	20,127	20,126	2,266	2,186
CO	3,361	3,290	3,898	3,843	2,437	2,368
CT	2,641	2,854	2,684	2,911	2,496	2,473
FL	10,963	10,730	11,464	11,210	2,259	2,248
GA	10,918	9,617	20,054	18,849	2,084	2,058
HI	458	467	497	491	2,012	1,935
IL	4,100	4,146	4,341	4,372	2,073	2,356
IN	23,645	22,742	24,411	23,525	2,188	2,176
IA	44,822	46,744	45,556	47,500	2,252	2,301
ME	2,756	4,227	2,808	4,287	2,493	2,123
MD	2,938	2,706	3,066	2,808	2,218	2,457
MI	7,337	7,694	7,587	7,944	2,267	2,253
MN	10,103	10,498	10,653	11,028	2,262	2,267
MS	1,684	1,614	6,853	6,850	1,999	1,971
MO	5,710	5,772	7,066	7,136	2,208	2,186
NE	11,549	11,922	11,624	11,997	2,297	2,334
NY	3,837	3,965	4,155	4,291	2,431	2,424
NC	3,277	3,458	10,757	11,061	1,962	1,971
OH	27,428	27,499	27,911	28,000	2,225	2,286
OK	1,906	1,884	4,134	3,859	1,959	1,995
OR	2,746	2,739	2,941	2,932	2,414	2,422
PA	22,182	21,516	23,964	23,371	2,366	2,323
SC	4,116	3,640	5,228	4,825	2,295	2,135
SD	3,321	2,960	3,521	3,060	2,244	2,255
TX	13,681	12,997	18,088	17,359	2,222	2,252
VA	1,198	1,394	3,113	3,347	1,960	2,181
WA	4,865	4,804	4,928	4,867	2,110	2,383
WI	4,092	4,250	4,602	4,736	2,173	2,344
Oth Sts ³	16,268	15,099	22,529	21,053	2,157	2,261
US	277,973	276,608	342,983	340,898	2,198	2,219

¹ Includes all layers and eggs produced in both table egg and hatching egg flocks regardless of size.

² Revised.

³ Not published separately to avoid disclosing data for individual operations.

**Layers and Eggs: Layers on Hand and Eggs Produced by State
and United States, During September 2004-05**

State	Table Egg Layers in Flocks 30,000 and Above		All Layers ¹		Eggs per 100 for All Layers ¹	
	2004	2005	2004	2005	2004	2005
	<i>1,000</i>	<i>1,000</i>	<i>1,000</i>	<i>1,000</i>	<i>Number</i>	<i>Number</i>
AL	1,870	1,717	9,273	9,034	1,887	1,838
AR	4,576	4,344	15,145	14,436	1,888	1,940
CA	19,654	19,325	20,105	19,850	2,203	2,131
CO	3,391	3,300	3,938	3,865	2,336	2,251
CT	2,668	2,906	2,717	2,965	2,356	2,293
FL	10,912	10,859	11,379	11,354	2,188	2,202
GA	11,120	9,768	20,280	19,009	2,027	2,025
HI	461	473	501	496	1,896	1,774
IL	4,032	4,298	4,275	4,526	2,246	2,298
IN	23,084	22,957	23,885	23,715	2,135	2,193
IA	45,037	48,119	45,805	48,826	2,166	2,198
ME	2,770	4,083	2,821	4,149	2,410	1,928
MD	3,090	2,590	3,217	2,691	2,207	2,341
MI	7,376	7,548	7,626	7,798	2,151	2,270
MN	10,065	10,622	10,638	11,140	2,200	2,208
MS	1,662	1,671	6,922	6,844	1,921	1,899
MO	5,911	5,637	7,258	6,918	2,204	2,197
NE	11,760	11,837	11,835	11,912	2,188	2,275
NY	3,821	3,896	4,139	4,219	2,319	2,299
NC	3,331	3,523	10,819	11,011	1,913	1,934
OH	27,890	27,287	28,388	27,785	2,138	2,242
OK	1,933	1,883	4,114	3,823	1,920	1,962
OR	2,806	2,802	2,995	2,995	2,304	2,270
PA	22,049	21,715	23,774	23,523	2,255	2,240
SC	4,114	3,690	5,210	4,881	2,150	2,151
SD	3,204	3,089	3,404	3,189	2,233	2,101
TX	13,797	13,094	18,194	17,409	2,171	2,143
VA	1,229	1,411	3,098	3,378	1,969	2,043
WA	4,925	4,812	4,986	4,873	2,166	2,278
WI	4,368	4,305	4,878	4,785	2,132	2,215
Oth Sts ²	16,277	15,030	22,499	20,983	2,120	2,197
US	279,183	278,591	344,118	342,382	2,134	2,155

¹ Includes all layers and eggs produced in both table egg and hatching egg flocks regardless of size.

² Not published separately to avoid disclosing data for individual operations.

**Egg Production: By Type, State, and United States,
August 2004-05 ¹**

State	Total Production		Table Eggs ²		Hatching Eggs ²	
	2004	2005 ³	2004	2005 ³	2004	2005 ³
	<i>Million Eggs</i>	<i>Million Eggs</i>	<i>Million Eggs</i>	<i>Million Eggs</i>	<i>Million Eggs</i>	<i>Million Eggs</i>
AL	181	169	43	35	138	134
AR	287	283	104	97	183	186
CA	456	440				
CO	95	91				
CT	67	72				
FL	259	252	251	245	8	7
GA	418	388	245	211	173	177
HI	10.0	9.5	10.0	9.5	0	0
IL	90	103	86	100	4	3
IN	534	512	522	499	12	13
IA	1,026	1,093				
ME	70	91				
MD	68	69	66	67	2	2
MI	172	179				
MN	241	250	233	242	8	8
MS	137	135	40	37	97	98
MO	156	156				
NE	267	280	267	280	0	0
NY	101	104				
NC	211	218	80	83	131	135
OH	621	640				
OK	81	77	45	44	36	33
OR	71	71	68	69	3	2
PA	567	543	550	525	17	18
SC	120	103	100	83	20	20
SD	79	69	79	69	0	0
TX	402	391				
VA	61	73	26	36	35	37
WA	104	116				
WI	100	111				
Oth Sts ⁴	486	476	392	384	95	93
US	7,538	7,565	6,443	6,462	1,095	1,104

¹ Totals may not add due to rounding.

² Data by type of flock not shown for some States to avoid disclosing individual operations.

³ Revised.

⁴ Not published separately to avoid disclosing data for individual operations.

**Egg Production: By Type, State, and United States,
September 2004-05 ¹**

State	Total Production		Table Eggs ²		Hatching Eggs ²	
	2004	2005	2004	2005	2004	2005
	<i>Million Eggs</i>	<i>Million Eggs</i>	<i>Million Eggs</i>	<i>Million Eggs</i>	<i>Million Eggs</i>	<i>Million Eggs</i>
AL	175	166	43	36	132	130
AR	286	280	105	98	181	182
CA	443	423				
CO	92	87				
CT	64	68				
FL	249	250	242	243	7	7
GA	411	385	243	210	168	175
HI	9.5	8.8	9.5	8.8	0	0
IL	96	104	92	101	4	3
IN	510	520	498	508	12	12
IA	992	1,073				
ME	68	80				
MD	71	63	69	62	2	1
MI	164	177				
MN	234	246	226	238	8	8
MS	133	130	38	38	95	92
MO	160	152				
NE	259	271	259	271	0	0
NY	96	97				
NC	207	213	80	82	127	131
OH	607	623				
OK	79	75	44	43	35	32
OR	69	68	67	66	2	2
PA	536	527	521	510	15	17
SC	112	105	93	85	19	20
SD	76	67	76	67	0	0
TX	395	373				
VA	61	69	27	32	34	37
WA	108	111				
WI	104	106				
Oth Sts ³	477	461	385	370	93	92
US	7,344	7,379	6,282	6,309	1,063	1,071

¹ Totals may not add due to rounding.

² Data by type of flock not shown for some States to avoid disclosing individual operations.

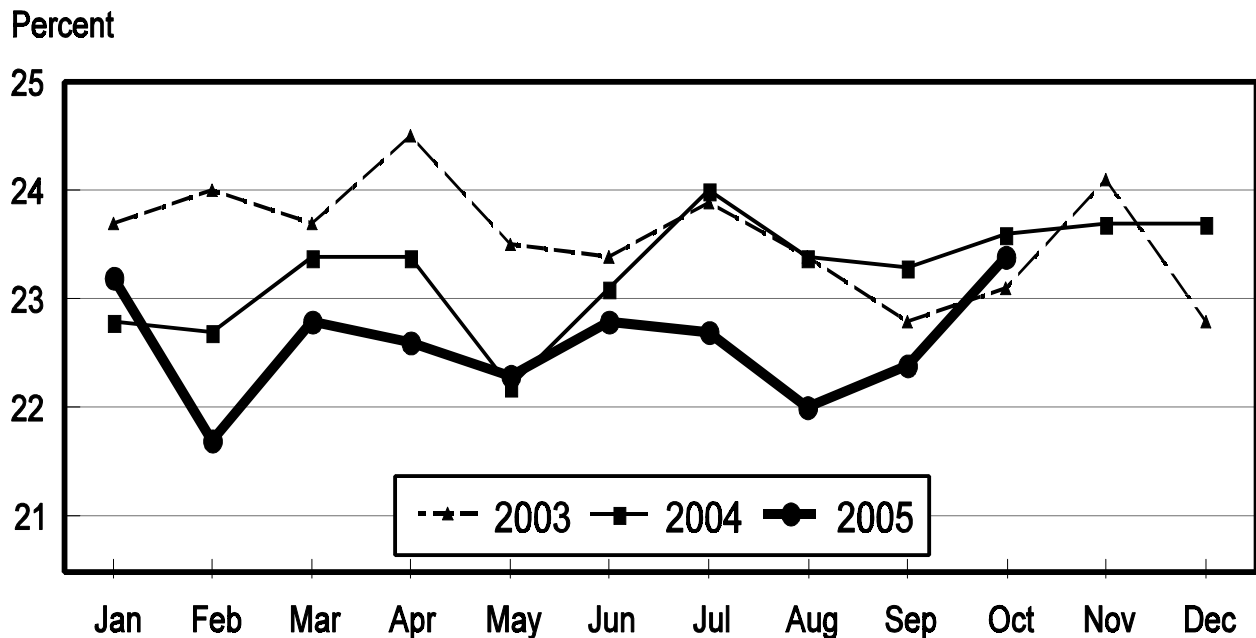
³ Not published separately to avoid disclosing data for individual operations.

**Forced Molt: Percent of All Layers by Month,
United States, 2004-05 ¹**

Month	Percent Being Molted		Percent with Molt Completed	
	2004	2005	2004	2005
	<i>Percent</i>	<i>Percent</i>	<i>Percent</i>	<i>Percent</i>
Jan	3.9	4.1	22.8	23.2
Feb	4.9	4.6	22.7	21.7
Mar	4.6	3.0	23.4	22.8
Apr	2.6	4.1	23.4	22.6
May	4.7	4.0	22.2	22.3
Jun	4.8	4.2	23.1	23.0
Jul	4.6	3.3	24.0	22.6
Aug	4.5	4.3	23.4	22.0
Sep	4.5	4.4	23.3	22.4
Oct	3.9	3.9	23.6	23.4
Nov	4.2		23.7	
Dec	2.6		23.7	

¹ As of first of month.

All Layers: Percent Molt Completed United States, 2003 - 2005 First of the Month



**Forced Molt: Percent of All Layers by State
and United States, October 2004-05 ¹**

State	Percent Being Molted		Percent with Molt Completed	
	2004	2005	2004	2005
	<i>Percent</i>	<i>Percent</i>	<i>Percent</i>	<i>Percent</i>
AL	0.0	1.5	6.0	6.0
AR	1.5	4.5	10.5	10.0
CA	5.0	4.5	34.5	34.5
CO	1.5	1.5	23.5	26.0
CT	3.5	6.0	7.5	9.5
FL	3.5	5.0	24.0	28.0
GA	3.0	3.0	18.0	15.0
HI	4.5	5.0	49.0	52.0
IL	5.5	2.5	34.5	30.5
IN	4.5	2.5	32.0	29.0
IA	5.0	4.5	37.0	34.5
ME	0.0	0.0	0.0	0.0
MD	2.0	4.0	35.5	46.0
MI	5.5	5.0	30.5	24.5
MN	6.5	4.5	21.5	23.5
MS	2.0	1.0	11.0	10.0
MO	0.5	4.0	23.5	20.5
NE	6.5	8.0	18.0	28.0
NY	1.5	3.5	7.5	7.0
NC	1.0	0.5	9.5	10.5
OH	7.5	5.0	20.5	17.5
OK	0.5	0.0	5.0	5.5
OR	0.0	8.0	32.5	36.5
PA	1.0	3.0	15.0	19.0
SC	3.5	5.5	33.5	19.5
SD	10.0	8.0	26.5	17.5
TX	3.0	2.0	20.5	22.5
VA	0.0	3.0	12.0	12.0
WA	5.4	6.0	39.0	45.0
WI	6.5	7.5	33.5	29.5
Oth Sts ²	4.1	3.9	26.5	27.1
US	3.9	3.9	23.6	23.4

¹ As of first of month.

² Not published separately to avoid disclosing data for individual operations.

**Hatchery Production: Eggs in Incubators, Chicks Hatched,
and Placements by Type, United States, September-October 2004-05**

Item	2004	2005	2005 as % of 2004
	<i>1,000</i>	<i>1,000</i>	<i>Percent</i>
Egg-Type			
Eggs in Incubators on Oct 1	33,475	31,844	95
Chicks Hatched During Sep	36,631	33,788	92
Chicks Hatched Jan thru Sep	326,348	331,996	102
Pullets Hatched During Sep for Intended Placements in Hatchery Supply Flocks	205	375	183
7-18 Months Earlier ¹	3,172	2,951	93
Broiler-Type			
Eggs in Incubators on Oct 1	617,612	631,739	102
Chicks Hatched During Sep	769,934	769,771	100
Chicks Hatched Jan thru Sep	7,052,913	7,141,372	101
Pullets Hatched During Sep for Intended Placements in Hatchery Supply Flocks	7,758	7,132	92
7-15 Months Earlier ²	62,113	62,707	101

¹ 2005 includes pullet chicks hatched Mar 2004 through Feb 2005.

² 2005 includes pullet chicks hatched Jun 2004 through Feb 2005.

**Egg-Type Eggs in Incubators: By Region and United States,
October 1, 2004-05**

Region	2004	2005	2005 as % of 2004
	<i>1,000</i>	<i>1,000</i>	<i>Percent</i>
North Atlantic	5,508	5,236	95
E North Central	6,932	6,308	91
W North Central	6,821	7,350	108
South Atlantic	3,422	3,198	93
South Central	5,660	5,100	90
West	5,132	4,652	91
US	33,475	31,844	95

Regions:

North Atlantic = CT, ME, MA, NH, NJ, NY, PA, RI, VT.

E North Central = IL, IN, MI, OH, WI.

W North Central = IA, KS, MN, MO, NE, ND, SD.

South Atlantic = DE, FL, GA, MD, NC, SC, VA, WV.

South Central = AL, AR, KY, LA, MS, OK, TN, TX.

West = AK, AZ, CA, CO, HI, ID, MT, NM, NV, OR, UT, WA, WY.

**Egg-Type Chicks Hatched: By State and United States,
September 2004-05**

State	During September			Jan-Sep		
	2004	2005	2005 as % of 2004	2004	2005	2005 as % of 2004
	<i>1,000</i>	<i>1,000</i>	<i>Percent</i>	<i>1,000</i>	<i>1,000</i>	<i>Percent</i>
FL	537	676	126	5,666	6,253	110
GA	2,339	2,272	97	21,383	20,568	96
IN	4,778	5,013	105	44,554	46,094	103
IA	5,743	6,288	109	54,657	56,688	104
MN	830	1,130	136	8,049	9,643	120
PA	5,141	4,768	93	45,891	44,503	97
Oth Sts ¹	17,263	13,641	79	146,148	148,247	101
US	36,631	33,788	92	326,348	331,996	102

¹ Not published separately to avoid disclosing data for individual operations.

Egg-Type Chicks Hatched: By Month, United States, 2003-05

Month	By Months				Cumulative			
	2003	2004	2005	2005 as % of 2004	2003	2004	2005	2005 as % of 2004
	<i>1,000</i>	<i>1,000</i>	<i>1,000</i>	<i>Percent</i>	<i>1,000</i>	<i>1,000</i>	<i>1,000</i>	<i>Percent</i>
Jan	33,521	35,155	37,936	108	33,521	35,155	37,936	108
Feb	30,474	31,923	33,932	106	63,995	67,078	71,868	107
Mar	36,775	37,545	41,824	111	100,770	104,623	113,692	109
Apr	37,820	37,466	38,267	102	138,590	142,089	151,959	107
May	37,630	38,347	37,449	98	176,220	180,436	189,408	105
Jun	36,602	37,508	34,537	92	212,822	217,944	223,945	103
Jul	35,578	34,919	35,310	101	248,400	252,863	259,255	103
Aug	33,199	36,854	38,953	106	281,599	289,717	298,208	103
Sep	35,763	36,631	33,788	92	317,362	326,348	331,996	102
Oct	34,812	34,866			352,174	361,214		
Nov	30,241	38,758			382,415	399,972		
Dec	33,588	37,332			416,003	437,304		

**Intended Placements: Egg-Type Pullet Chicks for Hatchery Supply
Flocks by Month and Total, United States, 2003-05 ¹**

Month	Pullet Chicks Hatched			2005 as % of 2004	Cumulative Potential Placements Relative to Current Supply Flocks 7-18 Months Earlier ²		
	2003	2004	2005		2004	2005	2006
	<i>1,000</i>	<i>1,000</i>	<i>1,000</i>	<i>Percent</i>	<i>1,000</i>	<i>1,000</i>	<i>1,000</i>
Jan	210	124	157	127	3,012	3,088	2,834
Feb	225	285	208	73	2,960	3,080	2,854
Mar	319	401	314	78	2,927	3,210	2,797
Apr	280	343	308	90	2,923	3,142	2,967
May	289	157	190	121	3,047	3,100	
Jun	309	212	184	87	3,139	3,006	
Jul	230	222	242	109	3,198	2,995	
Aug	188	318	261	82	3,112	3,028	
Sep	273	205	375	183	3,172	2,951	
Oct	310	268			3,254	2,864	
Nov	319	225			3,317	2,829	
Dec	246	235			3,185	2,862	
Total	3,198	2,995					

¹ Reported by leading breeders. Coverage may not be 100 percent. Includes expected pullet chicks from eggs sold during the preceding month at the rate of 125 pullet chicks per 30 dozen case of eggs.

² For September 2005, includes breeder pullet chicks hatched Mar 2004 through Feb 2005. The 7-18 months represent the first laying cycle. Molting and additional laying cycles will increase the cumulative potential placements.

**Broiler-Type Eggs in Incubators: By Region
and United States, October 1, 2004-05**

Region	2004	2005	2005 as % of 2004
	<i>1,000</i>	<i>1,000</i>	<i>Percent</i>
North Atlantic	11,675	12,019	103
E North Central	8,524	8,911	105
W North Central	21,740	20,619	95
South Atlantic	222,554	230,379	104
South Central	330,191	334,334	101
West	22,928	25,477	111
US	617,612	631,739	102

**Broiler-Type Chicks Hatched: By State
and United States, September 2004-05**

State	During September			Jan-Sep		
	2004	2005	2005 as % of 2004	2004	2005	2005 as % of 2004
	<i>1,000</i>	<i>1,000</i>	<i>Percent</i>	<i>1,000</i>	<i>1,000</i>	<i>Percent</i>
AL	107,539	111,274	103	989,042	1,007,258	102
AR	111,459	107,422	96	1,016,791	1,003,953	99
DE	13,227	13,927	105	122,137	130,779	107
FL	4,746	4,855	102	43,834	43,947	100
GA	117,943	117,952	100	1,075,599	1,082,790	101
KY	24,811	24,832	100	228,730	230,063	101
LA	13,730	14,657	107	123,830	132,744	107
MD	30,628	31,224	102	282,867	283,676	100
MS	70,087	62,351	89	645,085	629,470	98
NC	63,049	62,291	99	591,735	594,670	100
OK	23,257	23,211	100	211,880	212,548	100
PA	13,345	14,439	108	117,919	129,331	110
SC	14,361	18,055	126	121,333	163,890	135
TX	54,142	53,828	99	491,580	496,132	101
VA	23,441	22,475	96	214,056	210,674	98
CA, MO, TN, & WV	62,448	65,420	105	571,649	591,849	104
19 Sts ¹	748,213	748,213	100	6,848,067	6,943,774	101
Oth Sts ²	21,721	21,558	99	204,846	197,598	96
US	769,934	769,771	100	7,052,913	7,141,372	101

¹ States in the weekly hatchery production estimating program.

² Not published separately to avoid disclosing data for individual operations.

Broiler-Type Chicks Hatched: By Month, United States, 2003-05

Month	By Months				Cumulative			
	2003	2004	2005	2005 as % of 2004	2003	2004	2005	2005 as % of 2004
	<i>1,000</i>	<i>1,000</i>	<i>1,000</i>	<i>Percent</i>	<i>1,000</i>	<i>1,000</i>	<i>1,000</i>	<i>Percent</i>
Jan	759,674	774,004	796,026	103	759,674	774,004	796,026	103
Feb	693,549	728,401	731,274	100	1,453,223	1,502,405	1,527,300	102
Mar	774,354	791,915	815,782	103	2,227,577	2,294,320	2,343,082	102
Apr	760,638	774,629	789,780	102	2,988,215	3,068,949	3,132,862	102
May	792,813	810,484	823,406	102	3,781,028	3,879,433	3,956,268	102
Jun	774,679	786,603	796,001	101	4,555,707	4,666,036	4,752,269	102
Jul	777,838	806,658	807,654	100	5,333,545	5,472,694	5,559,923	102
Aug	784,107	810,285	811,678	100	6,117,652	6,282,979	6,371,601	101
Sep	739,515	769,934	769,771	100	6,857,167	7,052,913	7,141,372	101
Oct	735,235	756,895			7,592,402	7,809,808		
Nov	707,891	730,353			8,300,293	8,540,161		
Dec	780,321	793,090			9,080,614	9,333,251		

**Intended Placements: Broiler-Type Pullet Chicks for Hatchery
Supply Flocks by Month and Total, 2003-05 ¹**

Month	Pullet Chicks Hatched			2005 as % of 2004	Cumulative Potential Placements Relative to Current Supply Flocks 7-15 Months Earlier ²		
	2003	2004	2005		2004	2005	2006
	<i>1,000</i>	<i>1,000</i>	<i>1,000</i>	<i>Percent</i>	<i>1,000</i>	<i>1,000</i>	<i>1,000</i>
US Place- ments							
Jan	6,269	6,811	6,409	94	60,300	62,084	62,860
Feb	6,659	7,340	7,325	100	61,106	62,460	63,060
Mar	6,888	6,815	7,077	104	61,421	62,794	63,416
Apr	6,735	6,402	6,800	106	61,600	63,574	63,776
May	7,323	7,590	7,783	103	61,643	63,220	
Jun	6,748	6,890	7,109	103	61,930	63,008	
Jul	7,071	6,688	6,657	100	62,020	62,965	
Aug	7,253	7,280	7,484	103	62,096	62,972	
Sep	6,654	7,758	7,132	92	62,113	62,707	
Oct	6,312	6,457			62,180	62,894	
Nov	6,946	7,128			61,511	63,006	
Dec	6,978	6,772			61,848	63,509	
Annual Total	81,836	83,931					
Total Place- ments ³							
Jan	7,388	7,812	7,804	100			
Feb	8,094	8,251	8,664	105			
Mar	8,400	7,801	8,709	112			
Apr	8,062	7,288	7,995	110			
May	8,604	8,693	8,995	103			
Jun	8,341	8,590	8,571	100			
Jul	8,555	8,003	7,846	98			
Aug	8,608	8,416	9,084	108			
Sep	8,338	9,184	8,683	95			
Oct	7,695	7,678					
Nov	8,246	8,411					
Dec	8,185	8,263					
Annual Total	98,516	98,390					

¹ Reported by leading breeders. Coverage may not be 100 percent. Includes expected pullet chicks from eggs sold during the preceding month at the rate of 125 pullet chicks per 30 dozen case of eggs.

² For Sep 2005, includes breeder pullet chicks hatched Jun 2004 through Feb 2005.

³ U.S. production of intended placements worldwide.

Procedures and Reliability

Data Sources: Primary data for the "**Chickens and Eggs**" report are from weekly and/or monthly questionnaires sent to producers. An attempt is made to collect information for layer and egg estimates from each known contractor and independent producer who has at least 30,000 table egg layers, flocks of hatchery supply layers, or pullet only operations with at least 500 pullets. Coverage for operations with less than 30,000 table egg layers are estimated each month based on data reported in December. Approximately 900 contractors, independent egg producers, and pullet only operations are contacted each month. All known hatcheries, approximately 330, are contacted for information on a weekly and/or monthly basis.

Revisions: The previous month's estimates are subject to revision if late reports or corrected data indicates a different level. Additionally, revisions after the monthly report will be made at the end of the marketing year and published in the annual reports of "**Chickens and Eggs Summary**" and "**Hatchery Production**".

Procedures and Reliability: Operations are mailed a questionnaire and given adequate time to respond by mail. Those that do not respond are phoned. Great care is exercised to ensure that all operations are accounted for during each survey period. However, there are usually missing reports that must be accounted for in the estimates.

Sound statistical methodology is employed to derive estimates from the reported data. All data are checked for unusual values. All operations' data are compared to their own past operating profiles and also to trends from other operations. Data for missing operations are estimated based on similar operations or historical data. Survey data are subject to non-sampling errors such as omissions and mistakes in reporting and in processing. While these errors cannot be measured directly, they are minimized by reviewing all data for consistency and reasonableness.

Egg-type chicks hatched consist of all chicks of egg-type domesticated breeds including males and chicks destined for hatchery supply flocks and research purposes. The relationship of chicks hatched to chicken inventory and poultry marketings is carefully monitored. The disposition of egg-type chicks hatched prior to placement into the laying flock can vary significantly, which can make comparisons to changes in layer inventory inconsistent over time.

Intended placement data reported by leading breeders include pullet chicks expected from eggs sold the preceding month. The breeders in this report account for a large percentage of replacement pullets for hatchery supply flocks. Production of replacement pullets by these breeders indicates the number of pullets available to hatchery supply flocks several months before the pullets will actually move into the flocks. "Hatchery Supply Flocks" include all generations of layers which could lay eggs to supply a hatchery. This includes the generations of parents, grandparents, great-grandparents, pedigree, etc. Also included are research flocks, vaccine flocks, and specific pathogen-free flocks. The broiler cumulative potential placements are a moving total of the intended placements 7-15 months earlier. The egg-type cumulative potential placements of 7-18 months represent the first laying cycle. Molting and additional laying cycles will increase the cumulative potential placements of egg-type hatching flocks.

ACCESS TO REPORTS!!

For your convenience, there are several ways to obtain NASS reports, data products, and services:

INTERNET ACCESS

All NASS reports are available free of charge on the worldwide Internet. For access, connect to the Internet and go to the NASS Home Page at: www.usda.gov/nass/. Select "Today's Reports" or Publications and then Reports Calendar or Publications and then Search, by Title or Subject.

E-MAIL SUBSCRIPTION

All NASS reports are available by subscription free of charge direct to your e-mail address. Starting with the NASS Home Page at www.usda.gov/nass/, click on **Publications**, then click on the **Subscribe by E-mail** button which takes you to the page describing e-mail delivery of reports. Finally, click on **Go to the Subscription Page** and follow the instructions.

PRINTED REPORTS OR DATA PRODUCTS

CALL OUR TOLL-FREE ORDER DESK: 800-999-6779 (U.S. and Canada)
Other areas, please call 703-605-6220 FAX: 703-605-6900
(Visa, MasterCard, check, or money order acceptable for payment.)

ASSISTANCE

For **assistance** with general agricultural statistics or further information about NASS or its products or services, contact the **Agricultural Statistics Hotline** at **800-727-9540**, 7:30 a.m. to 4:00 p.m. ET, or e-mail: nass@nass.usda.gov.

The U.S. Department of Agriculture (USDA) prohibits discrimination in all its programs and activities on the basis of race, color, national origin, age, disability, and where applicable, sex, marital status, familial status, parental status, religion, sexual orientation, genetic information, political beliefs, reprisal, or because all or part of an individual's income is derived from any public assistance program. (Not all prohibited bases apply to all programs.) Persons with disabilities who require alternative means for communication of program information (Braille, large print, audiotape, etc.) should contact USDA's TARGET Center at (202) 720-2600 (voice and TDD).

To file a complaint of discrimination, write to USDA, Director, Office of Civil Rights, 1400 Independence Avenue, S.W., Washington, D.C. 20250-9410, or call (800) 795-3272 (voice) or (202) 720-6382 (TDD). USDA is an equal opportunity provider and employer.