



NASS

FACT FINDERS FOR AGRICULTURE
UNITED STATES DEPARTMENT OF AGRICULTURE

Washington, D.C.

Chickens And Eggs

Released November 22, 2005, by the National Agricultural Statistics Service (NASS), Agricultural Statistics Board, U.S. Department of Agriculture. For information on "Layers and Eggs" call Sharyn Lavender at (202) 720-3244, for "Chicks Hatched" call Jody Roberts at (202) 690-8632, office hours 7:30 a.m. to 4:00 p.m. ET.

October Egg Production Up 1 Percent

U.S. egg production totaled 7.70 billion during October 2005, up one percent from last year. Production included 6.60 billion table eggs, and 1.10 billion hatching eggs, of which 1.04 billion were broiler-type and 60 million were egg-type. The number of layers during October 2005 averaged 344 million, down slightly from a year earlier. October egg production per 100 layers was 2,239 eggs, up 1 percent from October 2004.

All layers in the U.S. on November 1, 2005, totaled 345 million, down slightly from a year ago. The 345 million layers consisted of 287 million layers producing table or market type eggs, 55.3 million layers producing broiler-type hatching eggs, and 2.46 million layers producing egg-type hatching eggs. Rate of lay per day on November 1, 2005, averaged 72.4 eggs per 100 layers, up 1 percent from November 1, 2004.

Egg-Type Chicks Hatched Up 1 Percent

Egg-type chicks hatched during October 2005 totaled 35.4 million, up 1 percent from October 2004. Eggs in incubators totaled 33.1 million on November 1, 2005, down 11 percent from a year ago.

Domestic placements of egg-type pullet chicks for future hatchery supply flocks by leading breeders totaled 189,000 during October 2005, down 29 percent from October 2004.

Broiler-Type Chicks Hatched Up 3 Percent

Broiler-type chicks hatched during October 2005 totaled 776 million, up 3 percent from October 2004. Eggs in incubators totaled 624 million on November 1, 2005, up 3 percent from a year earlier.

Leading breeders placed 6.94 million broiler-type pullet chicks for future domestic hatchery supply flocks during October 2005, up 8 percent from October 2004.

Contents

	Page
U.S. Average Number of Layers on Hand and Egg Production	1
U.S. Layers on Hand and Egg Production by Type, Forced Molt, and Pullets	3
Layers on Hand and Eggs Produced by State	5
Egg Production by Type and State	7
Forced Molt	9
Egg-Type Hatchery	11
Egg-Type Intended Placements	13
Broiler-Type Hatchery	13
Broiler-Type Intended Placements	15
Procedures and Reliability	16

**All Layers: Average Number on Hand During the Month,
United States, 2002-05**

Month	2002	2003	2004	2005
	<i>1,000 Layers</i>	<i>1,000 Layers</i>	<i>1,000 Layers</i>	<i>1,000 Layers</i>
Dec ¹	341,243	341,131	339,789	345,960
Jan	340,885	341,996	338,550	348,142
Feb	339,529	341,661	339,647	348,985
Mar	339,434	340,971	341,700	347,272
Apr	338,809	339,268	342,612	344,041
May	337,566	337,356	342,786	342,837
Jun	337,339	335,979	342,835	341,484
Jul	337,849	335,417	342,479	340,160
Aug	338,397	335,565	342,983	340,898
Sep	339,511	335,426	344,118	342,328
Oct	340,461	336,557	345,056	344,043
Nov	340,490	339,387	344,797	

¹ December preceding year.

**Eggs: Production During the Month by Type,
United States, 2004-05 ¹**

Month	Total Eggs		Table Eggs		Hatching Eggs	
	2004	2005	2004	2005	2004	2005
	<i>Million Eggs</i>	<i>Million Eggs</i>	<i>Million Eggs</i>	<i>Million Eggs</i>	<i>Million Eggs</i>	<i>Million Eggs</i>
Dec ²	7,554	7,728	6,492	6,643	1,063	1,085
Jan	7,386	7,617	6,323	6,518	1,063	1,100
Feb	6,901	6,919	5,895	5,906	1,007	1,014
Mar	7,547	7,727	6,453	6,599	1,095	1,129
Apr	7,358	7,384	6,284	6,288	1,074	1,097
May	7,513	7,558	6,393	6,425	1,120	1,133
Jun	7,289	7,346	6,209	6,250	1,080	1,096
Jul	7,557	7,584	6,455	6,465	1,102	1,120
Aug	7,538	7,565	6,443	6,462	1,095	1,104
Sep	7,344	7,377	6,282	6,308	1,063	1,070
Oct	7,659	7,703	6,569	6,599	1,090	1,104
Nov	7,482		6,435		1,047	
During Year	89,131		76,236		12,896	

¹ Totals may not add due to rounding.

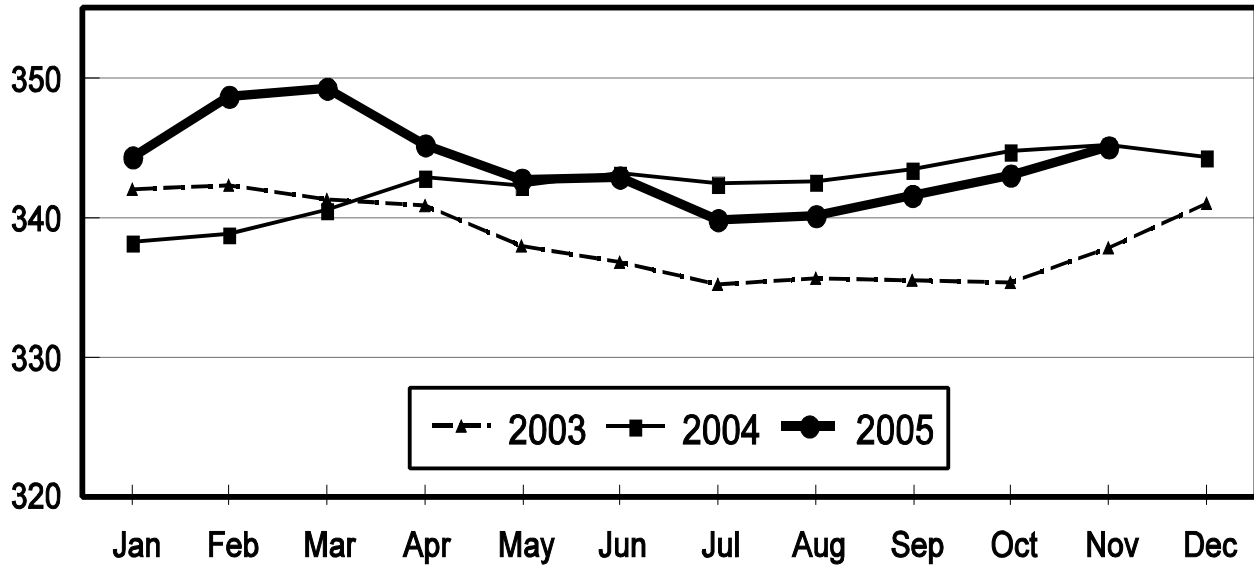
² December preceding year.

All Layers: Inventory

United States, 2003 - 2005

First of the Month

Million Layers

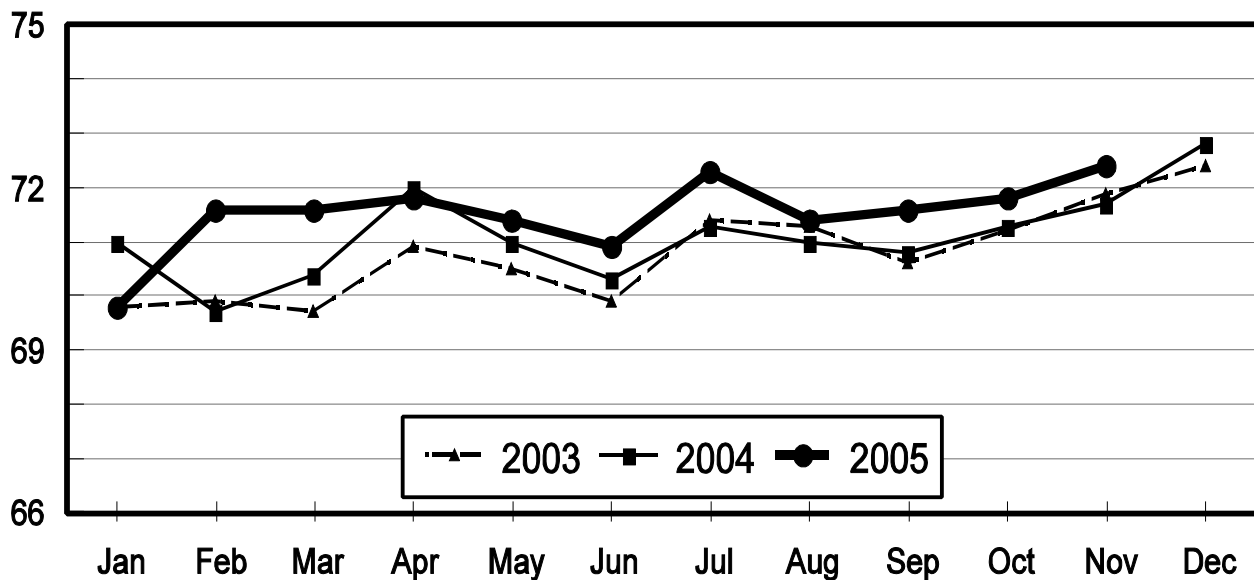


All Layers: Rate of Lay

United States, 2003 - 2005

First of the Month

Eggs Per 100 Layers



**Layers and Eggs: Layers on Hand and Eggs Produced by Type,
and Forced Molt, United States, September-October 2004-05¹**

Item	Unit	2004	2005 ²	2005 as % of 2004
Layers During Sep	1,000			
All Layers		344,118	342,328	99
Table Egg Type		285,271	284,533	100
Hatching Egg Type		58,847	57,795	98
Broiler-Type Hatching		56,223	55,222	98
Egg-Type Hatching		2,624	2,573	98
Eggs per 100 Layers During Sep	Number			
All Layers		2,134	2,155	101
Table Egg Type		2,202	2,217	101
Hatching Egg Type		1,806	1,851	102
Broiler-Type Hatching		1,784	1,831	103
Egg-Type Hatching		2,287	2,293	100
Eggs Produced During Sep	Million			
All Layers		7,344	7,377	100
Table Egg Type		6,282	6,308	100
Hatching Egg Type		1,063	1,070	101
Broiler-Type Hatching		1,003	1,011	101
Egg-Type Hatching		60	59	98
Layers on Oct 1	1,000			
All Layers		344,794	343,019	99
Table Egg Type		285,931	285,596	100
Hatching Egg Type		58,863	57,423	98
Broiler-Type Hatching		56,258	54,960	98
Egg-Type Hatching		2,605	2,463	95
Eggs per 100 Layers on Oct 1	Number			
All Layers		71.3	71.8	101
Table Egg Type		73.6	73.8	100
Hatching Egg Type		60.1	62.0	103
Broiler-Type Hatching		59.3	61.3	103
Egg-Type Hatching		77.6	78.7	101
Forced Molt Layers on Oct 1	Percent			
Percent Being Molted		3.9	3.9	100
Percent with Molt Completed		23.6	23.3	99
Layers Sold for Slaughter During Sep	1,000	16,400	16,091	98
Layers Rendered, Died, Destroyed, Composted or Disappeared For Any Reason During Sep	1,000	7,701	6,957	90
Pullets on Oct 1	1,000	98,318	98,693	100
Pullets Added During Sep ³	1,000	23,784	23,785	100

¹ Totals may not add due to rounding.

² Revised.

³ Pullet chicks less than 3 days old added to pullet flocks.

**Layers and Eggs: Layers on Hand and Eggs Produced by Type,
and Forced Molt, United States, October-November 2004-05 ¹**

Item	Unit	2004	2005	2005 as % of 2004
Layers During Oct	1,000			
All Layers		345,056	344,043	100
Table Egg Type		286,427	286,450	100
Hatching Egg Type		58,629	57,593	98
Broiler-Type Hatching		56,073	55,124	98
Egg-Type Hatching		2,556	2,469	97
Eggs per 100 Layers During Oct	Number			
All Layers		2,220	2,239	101
Table Egg Type		2,293	2,304	100
Hatching Egg Type		1,859	1,917	103
Broiler-Type Hatching		1,833	1,894	103
Egg-Type Hatching		2,426	2,430	100
Eggs Produced During Oct	Million			
All Layers		7,659	7,703	101
Table Egg Type		6,569	6,599	100
Hatching Egg Type		1,090	1,104	101
Broiler-Type Hatching		1,028	1,044	102
Egg-Type Hatching		62	60	97
Layers on Nov 1	1,000			
All Layers		345,267	345,021	100
Table Egg Type		286,895	287,282	100
Hatching Egg Type		58,372	57,739	99
Broiler-Type Hatching		55,873	55,275	99
Egg-Type Hatching		2,499	2,464	99
Eggs per 100 Layers on Nov 1	Number			
All Layers		71.7	72.4	101
Table Egg Type		74.2	74.7	101
Hatching Egg Type		59.6	61.1	103
Broiler-Type Hatching		58.7	60.4	103
Egg-Type Hatching		79.8	78.1	98
Forced Molt Layers on Nov 1	Percent			
Percent Being Molted		4.2	3.1	74
Percent with Molt Completed		23.7	24.2	102
Layers Sold for Slaughter During Oct	1,000	15,643	13,662	87
Layers Rendered, Died, Destroyed, Composted or Disappeared For Any Reason During Oct	1,000	8,203	5,710	70
Pullets on Nov 1	1,000	99,370	98,924	100
Pullets Added During Oct ²	1,000	24,807	22,429	90

¹ Totals may not add due to rounding.

² Pullet chicks less than 3 days old added to pullet flocks.

**Layers and Eggs: Layers on Hand and Eggs Produced by State
and United States, During September 2004-05**

State	Table Egg Layers in Flocks 30,000 and Above		All Layers ¹		Eggs per 100 for All Layers ¹	
	2004	2005 ²	2004	2005 ²	2004	2005 ²
	<i>1,000</i>	<i>1,000</i>	<i>1,000</i>	<i>1,000</i>	<i>Number</i>	<i>Number</i>
AL	1,870	1,717	9,273	9,034	1,887	1,838
AR	4,576	4,344	15,145	14,448	1,888	1,938
CA	19,654	19,325	20,105	19,850	2,203	2,131
CO	3,391	3,300	3,938	3,865	2,336	2,251
CT	2,668	2,906	2,717	2,965	2,356	2,293
FL	10,912	10,859	11,379	11,354	2,188	2,202
GA	11,120	9,768	20,280	18,944	2,027	2,027
HI	461	473	501	496	1,896	1,774
IL	4,032	4,298	4,275	4,526	2,246	2,298
IN	23,084	22,918	23,885	23,676	2,135	2,192
IA	45,037	48,119	45,805	48,826	2,166	2,198
ME	2,770	4,083	2,821	4,149	2,410	1,928
MD	3,090	2,590	3,217	2,691	2,207	2,341
MI	7,376	7,548	7,626	7,798	2,151	2,270
MN	10,065	10,622	10,638	11,140	2,200	2,208
MS	1,662	1,671	6,922	6,844	1,921	1,899
MO	5,911	5,637	7,258	6,918	2,204	2,197
NE	11,760	11,837	11,835	11,912	2,188	2,275
NY	3,821	3,896	4,139	4,219	2,319	2,299
NC	3,331	3,523	10,819	11,011	1,913	1,934
OH	27,890	27,287	28,388	27,785	2,138	2,242
OK	1,933	1,883	4,114	3,823	1,920	1,962
OR	2,806	2,802	2,995	2,995	2,304	2,270
PA	22,049	21,715	23,774	23,523	2,255	2,240
SC	4,114	3,690	5,210	4,881	2,150	2,151
SD	3,204	3,089	3,404	3,189	2,233	2,101
TX	13,797	13,094	18,194	17,409	2,171	2,143
VA	1,229	1,411	3,098	3,378	1,969	2,043
WA	4,925	4,848	4,986	4,909	2,166	2,261
WI	4,368	4,305	4,878	4,785	2,132	2,215
Oth Sts ³	16,277	15,032	22,499	20,985	2,120	2,197
US	279,183	278,590	344,118	342,328	2,134	2,155

¹ Includes all layers and eggs produced in both table egg and hatching egg flocks regardless of size.

² Revised.

³ Not published separately to avoid disclosing data for individual operations.

**Layers and Eggs: Layers on Hand and Eggs Produced by State
and United States, During October 2004-05**

State	Table Egg Layers in Flocks 30,000 and Above		All Layers ¹		Eggs per 100 for All Layers ¹	
	2004	2005	2004	2005	2004	2005
	<i>1,000</i>	<i>1,000</i>	<i>1,000</i>	<i>1,000</i>	<i>Number</i>	<i>Number</i>
AL	1,885	1,727	9,233	9,120	1,939	1,897
AR	4,739	4,499	15,375	14,790	1,938	2,008
CA	20,048	19,104	20,578	19,629	2,289	2,216
CO	3,473	3,174	4,015	3,733	2,291	2,411
CT	2,794	2,946	2,844	3,001	2,426	2,333
FL	10,763	11,030	11,202	11,526	2,303	2,343
GA	11,227	10,016	20,323	19,081	2,140	2,170
HI	465	475	505	496	1,960	1,855
IL	3,964	4,402	4,206	4,626	2,378	2,399
IN	22,448	23,066	23,238	23,788	2,276	2,299
IA	45,434	48,694	46,197	49,351	2,260	2,286
ME	2,729	3,958	2,781	4,019	2,229	2,065
MD	3,074	2,481	3,215	2,600	2,208	2,385
MI	7,363	7,520	7,613	7,770	2,246	2,342
MN	10,188	10,732	10,771	11,243	2,265	2,313
MS	1,696	1,664	7,007	6,871	1,955	1,994
MO	6,031	5,626	7,303	6,849	2,328	2,292
NE	11,969	11,848	12,044	11,923	2,233	2,273
NY	3,733	3,781	4,054	4,105	2,467	2,412
NC	3,355	3,412	10,826	10,832	1,977	2,031
OH	27,989	27,354	28,467	27,856	2,234	2,269
OK	1,916	1,883	4,016	3,823	1,967	2,066
OR	2,785	2,710	2,974	2,893	2,387	2,454
PA	22,126	22,006	23,835	23,758	2,333	2,319
SC	4,128	3,840	5,222	5,037	2,202	2,204
SD	3,199	3,218	3,399	3,318	2,354	2,140
TX	14,119	13,480	18,515	17,790	2,220	2,254
VA	1,312	1,443	3,163	3,394	2,150	2,121
WA	4,956	4,963	5,017	5,024	2,452	2,229
WI	4,334	4,352	4,850	4,837	2,247	2,315
Oth Sts ²	16,097	15,105	22,268	20,960	2,191	2,271
US	280,339	280,509	345,056	344,043	2,220	2,239

¹ Includes all layers and eggs produced in both table egg and hatching egg flocks regardless of size.

² Not published separately to avoid disclosing data for individual operations.

**Egg Production: By Type, State, and United States,
September 2004-05 ¹**

State	Total Production		Table Eggs ²		Hatching Eggs ²	
	2004	2005 ³	2004	2005 ³	2004	2005 ³
	<i>Million Eggs</i>	<i>Million Eggs</i>	<i>Million Eggs</i>	<i>Million Eggs</i>	<i>Million Eggs</i>	<i>Million Eggs</i>
AL	175	166	43	36	132	130
AR	286	280	105	98	181	182
CA	443	423				
CO	92	87				
CT	64	68				
FL	249	250	242	243	7	7
GA	411	384	243	210	168	174
HI	9.5	8.8	9.5	8.8	0	0
IL	96	104	92	101	4	3
IN	510	519	498	507	12	12
IA	992	1,073				
ME	68	80				
MD	71	63	69	62	2	1
MI	164	177				
MN	234	246	226	238	8	8
MS	133	130	38	38	95	92
MO	160	152				
NE	259	271	259	271	0	0
NY	96	97				
NC	207	213	80	82	127	131
OH	607	623				
OK	79	75	44	43	35	32
OR	69	68	67	66	2	2
PA	536	527	521	510	15	17
SC	112	105	93	85	19	20
SD	76	67	76	67	0	0
TX	395	373				
VA	61	69	27	32	34	37
WA	108	111				
WI	104	106				
Oth Sts ⁴	477	461	385	370	93	92
US	7,344	7,377	6,282	6,308	1,063	1,070

¹ Totals may not add due to rounding.

² Data by type of flock not shown for some States to avoid disclosing individual operations.

³ Revised.

⁴ Not published separately to avoid disclosing data for individual operations.

**Egg Production: By Type, State, and United States,
October 2004-05 ¹**

State	Total Production		Table Eggs ²		Hatching Eggs ²	
	2004	2005	2004	2005	2004	2005
	<i>Million Eggs</i>	<i>Million Eggs</i>	<i>Million Eggs</i>	<i>Million Eggs</i>	<i>Million Eggs</i>	<i>Million Eggs</i>
AL	179	173	44	39	135	134
AR	298	297	114	106	184	191
CA	471	435				
CO	92	90				
CT	69	70				
FL	258	270	251	262	7	8
GA	435	414	263	237	172	177
HI	9.9	9.2	9.9	9.2	0	0
IL	100	111	96	108	4	3
IN	529	547	516	535	13	12
IA	1,044	1,128				
ME	62	83				
MD	71	62	69	60	2	2
MI	171	182				
MN	244	260	236	252	8	8
MS	137	137	39	40	98	97
MO	170	157				
NE	269	271	269	271	0	0
NY	100	99				
NC	214	220	83	85	131	135
OH	636	632				
OK	79	79	45	45	34	34
OR	71	71	69	69	2	2
PA	556	551	541	535	15	16
SC	115	111	95	90	20	21
SD	80	71	80	71	0	0
TX	411	401				
VA	68	72	33	34	35	38
WA	123	112				
WI	109	112				
Oth Sts ³	488	476	392	382	97	94
US	7,659	7,703	6,569	6,599	1,090	1,104

¹ Totals may not add due to rounding.

² Data by type of flock not shown for some States to avoid disclosing individual operations.

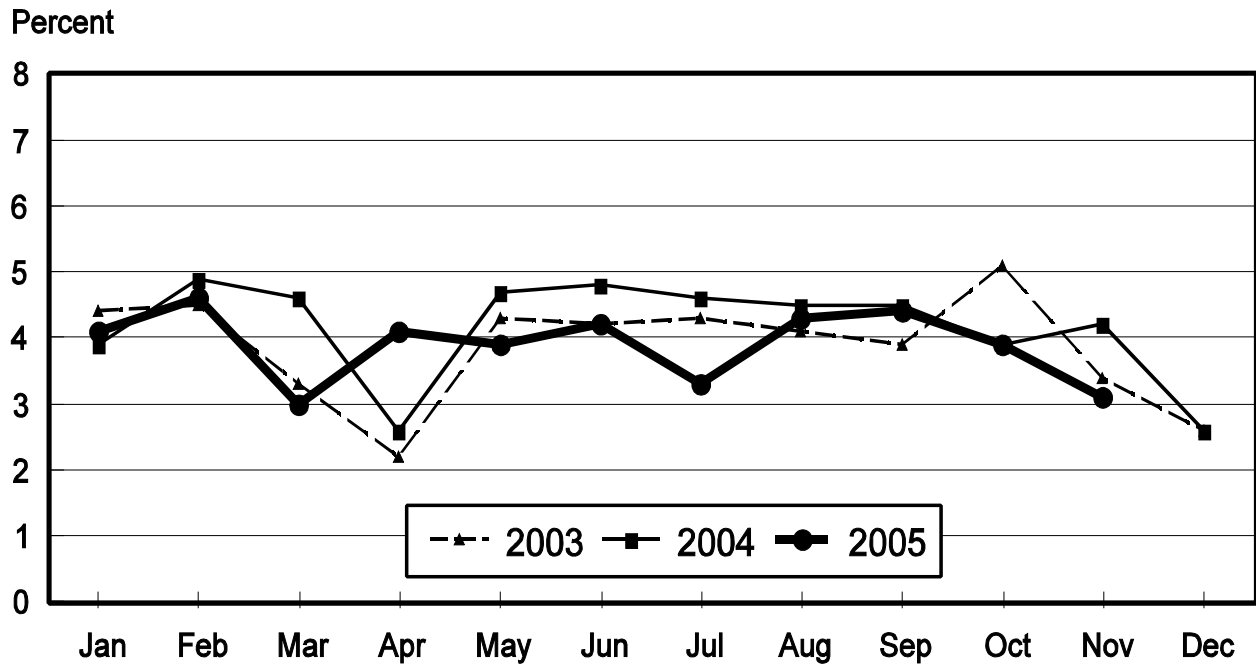
³ Not published separately to avoid disclosing data for individual operations.

**Forced Molt: Percent of All Layers by Month,
United States, 2004-05 ¹**

Month	Percent Being Molted		Percent with Molt Completed	
	2004	2005	2004	2005
	<i>Percent</i>	<i>Percent</i>	<i>Percent</i>	<i>Percent</i>
Jan	3.9	4.1	22.8	23.2
Feb	4.9	4.6	22.7	21.7
Mar	4.6	3.0	23.4	22.8
Apr	2.6	4.1	23.4	22.6
May	4.7	4.0	22.2	22.3
Jun	4.8	4.2	23.1	23.0
Jul	4.6	3.3	24.0	22.6
Aug	4.5	4.3	23.4	22.0
Sep	4.5	4.4	23.3	22.4
Oct	3.9	3.9	23.6	23.3
Nov	4.2	3.1	23.7	24.2
Dec	2.6		23.7	

¹ As of first of month.

**All Layers: Percent Being Molted
United States, 2003 - 2005
First of the Month**



**Forced Molt: Percent of All Layers by State
and United States, November 2004-05 ¹**

State	Percent Being Molted		Percent with Molt Completed	
	2004	2005	2004	2005
	<i>Percent</i>	<i>Percent</i>	<i>Percent</i>	<i>Percent</i>
AL	0.5	1.5	5.5	7.0
AR	0.5	1.0	11.0	11.0
CA	5.0	3.5	34.0	36.0
CO	1.5	3.0	23.5	23.5
CT	0.0	5.5	10.5	9.5
FL	3.5	6.5	21.0	31.5
GA	6.5	2.0	17.0	15.0
HI	8.5	8.0	47.0	54.5
IL	4.5	0.0	30.5	33.0
IN	3.0	2.0	31.0	29.5
IA	5.0	3.5	37.5	37.0
ME	0.0	0.0	0.0	0.0
MD	15.5	7.0	16.0	40.0
MI	1.0	1.5	34.0	25.0
MN	6.0	0.5	23.0	26.5
MS	2.0	2.0	10.5	9.0
MO	1.5	0.0	24.0	22.0
NE	9.5	9.0	16.5	26.5
NY	1.5	3.0	4.5	8.5
NC	1.0	1.5	8.0	8.5
OH	7.0	4.5	28.0	16.0
OK	0.5	0.0	5.0	5.5
OR	4.0	4.5	31.5	37.0
PA	0.0	2.0	13.5	21.0
SC	5.0	14.5	29.0	14.5
SD	3.0	4.0	34.0	19.0
TX	7.0	0.5	20.5	25.0
VA	0.0	0.0	14.0	15.5
WA	10.0	4.0	42.5	41.0
WI	5.0	3.5	32.0	35.0
Oth Sts ²	4.2	4.3	24.3	27.5
US	4.2	3.1	23.7	24.2

¹ As of first of month.

² Not published separately to avoid disclosing data for individual operations.

**Hatchery Production: Eggs in Incubators, Chicks Hatched,
and Placements by Type, United States, October-November 2004-05**

Item	2004	2005	2005 as % of 2004
	<i>1,000</i>	<i>1,000</i>	<i>Percent</i>
Egg-Type			
Eggs in Incubators on Nov 1	37,354	33,081	89
Chicks Hatched During Oct	34,866	35,367	101
Chicks Hatched Jan thru Oct	361,214	367,363	102
Pullets Hatched During Oct for Intended Placements in Hatchery Supply Flocks	268	189	71
7-18 Months Earlier ¹	3,254	2,864	88
Broiler-Type			
Eggs in Incubators on Nov 1	607,801	623,938	103
Chicks Hatched During Oct	756,895	776,333	103
Chicks Hatched Jan thru Oct	7,809,808	7,917,705	101
Pullets Hatched During Oct for Intended Placements in Hatchery Supply Flocks	6,457	6,944	108
7-15 Months Earlier ²	62,180	62,894	101

¹ 2005 includes pullet chicks hatched Apr 2004 through Mar 2005.

² 2005 includes pullet chicks hatched Jul 2004 through Mar 2005.

**Egg-Type Eggs in Incubators: By Region and United States,
November 1, 2004-05**

Region	2004	2005	2005 as % of 2004
	<i>1,000</i>	<i>1,000</i>	<i>Percent</i>
North Atlantic	6,694	5,654	84
E North Central	7,697	6,476	84
W North Central	8,097	7,272	90
South Atlantic	3,757	3,392	90
South Central	5,904	5,591	95
West	5,205	4,696	90
US	37,354	33,081	89

Regions:

North Atlantic = CT, ME, MA, NH, NJ, NY, PA, RI, VT.

E North Central = IL, IN, MI, OH, WI.

W North Central = IA, KS, MN, MO, NE, ND, SD.

South Atlantic = DE, FL, GA, MD, NC, SC, VA, WV.

South Central = AL, AR, KY, LA, MS, OK, TN, TX.

West = AK, AZ, CA, CO, HI, ID, MT, NM, NV, OR, UT, WA, WY.

**Egg-Type Chicks Hatched: By State and United States,
October 2004-05**

State	During October			Jan-Oct		
	2004	2005	2005 as % of 2004	2004	2005	2005 as % of 2004
	<i>1,000</i>	<i>1,000</i>	<i>Percent</i>	<i>1,000</i>	<i>1,000</i>	<i>Percent</i>
FL	520	685	132	6,186	6,938	112
GA	2,397	2,371	99	23,780	22,939	96
IN	4,322	5,293	122	48,876	51,387	105
IA	5,075	5,725	113	59,732	62,413	104
MN	820	1,126	137	8,869	10,769	121
PA	5,183	4,343	84	51,074	48,846	96
Oth Sts ¹	16,549	15,824	96	162,697	164,071	101
US	34,866	35,367	101	361,214	367,363	102

¹ Not published separately to avoid disclosing data for individual operations.

Egg-Type Chicks Hatched: By Month, United States, 2003-05

Month	By Months				Cumulative			
	2003	2004	2005	2005 as % of 2004	2003	2004	2005	2005 as % of 2004
	<i>1,000</i>	<i>1,000</i>	<i>1,000</i>	<i>Percent</i>	<i>1,000</i>	<i>1,000</i>	<i>1,000</i>	<i>Percent</i>
Jan	33,521	35,155	37,936	108	33,521	35,155	37,936	108
Feb	30,474	31,923	33,932	106	63,995	67,078	71,868	107
Mar	36,775	37,545	41,824	111	100,770	104,623	113,692	109
Apr	37,820	37,466	38,267	102	138,590	142,089	151,959	107
May	37,630	38,347	37,449	98	176,220	180,436	189,408	105
Jun	36,602	37,508	34,537	92	212,822	217,944	223,945	103
Jul	35,578	34,919	35,310	101	248,400	252,863	259,255	103
Aug	33,199	36,854	38,953	106	281,599	289,717	298,208	103
Sep	35,763	36,631	33,788	92	317,362	326,348	331,996	102
Oct	34,812	34,866	35,367	101	352,174	361,214	367,363	102
Nov	30,241	38,758			382,415	399,972		
Dec	33,588	37,332			416,003	437,304		

**Intended Placements: Egg-Type Pullet Chicks for Hatchery Supply
Flocks by Month and Total, United States, 2003-05¹**

Month	Pullet Chicks Hatched			2005 as % of 2004	Cumulative Potential Placements Relative to Current Supply Flocks 7-18 Months Earlier ²		
	2003	2004	2005		2004	2005	2006
	<i>1,000</i>	<i>1,000</i>	<i>1,000</i>	<i>Percent</i>	<i>1,000</i>	<i>1,000</i>	<i>1,000</i>
Jan	210	124	157	127	3,012	3,088	2,834
Feb	225	285	208	73	2,960	3,080	2,854
Mar	319	401	314	78	2,927	3,210	2,797
Apr	280	343	308	90	2,923	3,142	2,967
May	289	157	190	121	3,047	3,100	2,888
Jun	309	212	184	87	3,139	3,006	
Jul	230	222	242	109	3,198	2,995	
Aug	188	318	261	82	3,112	3,028	
Sep	273	205	375	183	3,172	2,951	
Oct	310	268	189	71	3,254	2,864	
Nov	319	225			3,317	2,829	
Dec	246	235			3,185	2,862	
Total	3,198	2,995					

¹ Reported by leading breeders. Coverage may not be 100 percent. Includes expected pullet chicks from eggs sold during the preceding month at the rate of 125 pullet chicks per 30 dozen case of eggs.

² For October 2005, includes breeder pullet chicks hatched Apr 2004 through Mar 2005. The 7-18 months represent the first laying cycle. Molting and additional laying cycles will increase the cumulative potential placements.

**Broiler-Type Eggs in Incubators: By Region
and United States, November 1, 2004-05**

Region	2004	2005	2005 as % of 2004
	<i>1,000</i>	<i>1,000</i>	<i>Percent</i>
North Atlantic	12,296	11,403	93
E North Central	8,582	8,414	98
W North Central	20,027	20,590	103
South Atlantic	222,404	228,836	103
South Central	320,217	329,506	103
West	24,275	25,189	104
US	607,801	623,938	103

**Broiler-Type Chicks Hatched: By State
and United States, October 2004-05**

State	During October			Jan-Oct		
	2004	2005	2005 as % of 2004	2004	2005	2005 as % of 2004
	<i>1,000</i>	<i>1,000</i>	<i>Percent</i>	<i>1,000</i>	<i>1,000</i>	<i>Percent</i>
AL	106,358	111,950	105	1,095,400	1,119,208	102
AR	108,403	109,617	101	1,125,194	1,113,570	99
DE	13,144	14,390	109	135,281	145,169	107
FL	4,933	5,109	104	48,767	49,056	101
GA	115,525	119,293	103	1,191,124	1,202,083	101
KY	23,912	24,531	103	252,642	254,594	101
LA	13,919	14,547	105	137,749	147,291	107
MD	30,087	31,707	105	312,954	315,383	101
MS	69,188	66,023	95	714,273	695,493	97
NC	63,039	64,131	102	654,774	658,801	101
OK	22,000	23,265	106	233,880	235,813	101
PA	12,877	14,644	114	130,796	143,975	110
SC	15,450	18,280	118	136,783	182,170	133
TX	53,247	52,051	98	544,827	548,183	101
VA	22,900	22,828	100	236,956	233,502	99
CA, MO, TN, & WV	63,120	64,621	102	634,769	656,470	103
19 Sts ¹	738,102	756,987	103	7,586,169	7,700,761	102
Oth Sts ²	18,793	19,346	103	223,639	216,944	97
US	756,895	776,333	103	7,809,808	7,917,705	101

¹ States in the weekly hatchery production estimating program.

² Not published separately to avoid disclosing data for individual operations.

Broiler-Type Chicks Hatched: By Month, United States, 2003-05

Month	By Months				Cumulative			
	2003	2004	2005	2005 as % of 2004	2003	2004	2005	2005 as % of 2004
	<i>1,000</i>	<i>1,000</i>	<i>1,000</i>	<i>Percent</i>	<i>1,000</i>	<i>1,000</i>	<i>1,000</i>	<i>Percent</i>
Jan	759,674	774,004	796,026	103	759,674	774,004	796,026	103
Feb	693,549	728,401	731,274	100	1,453,223	1,502,405	1,527,300	102
Mar	774,354	791,915	815,782	103	2,227,577	2,294,320	2,343,082	102
Apr	760,638	774,629	789,780	102	2,988,215	3,068,949	3,132,862	102
May	792,813	810,484	823,406	102	3,781,028	3,879,433	3,956,268	102
Jun	774,679	786,603	796,001	101	4,555,707	4,666,036	4,752,269	102
Jul	777,838	806,658	807,654	100	5,333,545	5,472,694	5,559,923	102
Aug	784,107	810,285	811,678	100	6,117,652	6,282,979	6,371,601	101
Sep	739,515	769,934	769,771	100	6,857,167	7,052,913	7,141,372	101
Oct	735,235	756,895	776,333	103	7,592,402	7,809,808	7,917,705	101
Nov	707,891	730,353			8,300,293	8,540,161		
Dec	780,321	793,090			9,080,614	9,333,251		

**Intended Placements: Broiler-Type Pullet Chicks for Hatchery
Supply Flocks by Month and Total, 2003-05 ¹**

Month	Pullet Chicks Hatched			2005 as % of 2004	Cumulative Potential Placements Relative to Current Supply Flocks 7-15 Months Earlier ²		
	2003	2004	2005		2004	2005	2006
	<i>1,000</i>	<i>1,000</i>	<i>1,000</i>	<i>Percent</i>	<i>1,000</i>	<i>1,000</i>	<i>1,000</i>
US Place- ments							
Jan	6,269	6,811	6,409	94	60,300	62,084	62,860
Feb	6,659	7,340	7,325	100	61,106	62,460	63,060
Mar	6,888	6,815	7,077	104	61,421	62,794	63,416
Apr	6,735	6,402	6,800	106	61,600	63,574	63,776
May	7,323	7,590	7,783	103	61,643	63,220	64,311
Jun	6,748	6,890	7,109	103	61,930	63,008	
Jul	7,071	6,688	6,657	100	62,020	62,965	
Aug	7,253	7,280	7,484	103	62,096	62,972	
Sep	6,654	7,758	7,132	92	62,113	62,707	
Oct	6,312	6,457	6,944	108	62,180	62,894	
Nov	6,946	7,128			61,511	63,006	
Dec	6,978	6,772			61,848	63,509	
Annual Total	81,836	83,931					
Total Place- ments ³							
Jan	7,388	7,812	7,804	100			
Feb	8,094	8,251	8,664	105			
Mar	8,400	7,801	8,709	112			
Apr	8,062	7,288	7,995	110			
May	8,604	8,693	8,995	103			
Jun	8,341	8,590	8,571	100			
Jul	8,555	8,003	7,846	98			
Aug	8,608	8,416	9,084	108			
Sep	8,338	9,184	8,683	95			
Oct	7,695	7,678	8,683	113			
Nov	8,246	8,411					
Dec	8,185	8,263					
Annual Total	98,516	98,390					

¹ Reported by leading breeders. Coverage may not be 100 percent. Includes expected pullet chicks from eggs sold during the preceding month at the rate of 125 pullet chicks per 30 dozen case of eggs.

² For Oct 2005, includes breeder pullet chicks hatched Jul 2004 through Mar 2005.

³ U.S. production of intended placements worldwide.

Procedures and Reliability

Data Sources: Primary data for the "**Chickens and Eggs**" report are from weekly and/or monthly questionnaires sent to producers. An attempt is made to collect information for layer and egg estimates from each known contractor and independent producer who has at least 30,000 table egg layers, flocks of hatchery supply layers, or pullet only operations with at least 500 pullets. Coverage for operations with less than 30,000 table egg layers are estimated each month based on data reported in December. Approximately 900 contractors, independent egg producers, and pullet only operations are contacted each month. All known hatcheries, approximately 330, are contacted for information on a weekly and/or monthly basis.

Revisions: The previous month's estimates are subject to revision if late reports or corrected data indicates a different level. Additionally, revisions after the monthly report will be made at the end of the marketing year and published in the annual reports of "**Chickens and Eggs Summary**" and "**Hatchery Production**".

Procedures and Reliability: Operations are mailed a questionnaire and given adequate time to respond by mail. Those that do not respond are phoned. Great care is exercised to ensure that all operations are accounted for during each survey period. However, there are usually missing reports that must be accounted for in the estimates.

Sound statistical methodology is employed to derive estimates from the reported data. All data are checked for unusual values. All operations' data are compared to their own past operating profiles and also to trends from other operations. Data for missing operations are estimated based on similar operations or historical data. Survey data are subject to non-sampling errors such as omissions and mistakes in reporting and in processing. While these errors cannot be measured directly, they are minimized by reviewing all data for consistency and reasonableness.

Egg-type chicks hatched consist of all chicks of egg-type domesticated breeds including males and chicks destined for hatchery supply flocks and research purposes. The relationship of chicks hatched to chicken inventory and poultry marketings is carefully monitored. The disposition of egg-type chicks hatched prior to placement into the laying flock can vary significantly, which can make comparisons to changes in layer inventory inconsistent over time.

Intended placement data reported by leading breeders include pullet chicks expected from eggs sold the preceding month. The breeders in this report account for a large percentage of replacement pullets for hatchery supply flocks. Production of replacement pullets by these breeders indicates the number of pullets available to hatchery supply flocks several months before the pullets will actually move into the flocks. "Hatchery Supply Flocks" include all generations of layers which could lay eggs to supply a hatchery. This includes the generations of parents, grandparents, great-grandparents, pedigree, etc. Also included are research flocks, vaccine flocks, and specific pathogen-free flocks. The broiler cumulative potential placements are a moving total of the intended placements 7-15 months earlier. The egg-type cumulative potential placements of 7-18 months represent the first laying cycle. Molting and additional laying cycles will increase the cumulative potential placements of egg-type hatching flocks.

ACCESS TO REPORTS!!

For your convenience, there are several ways to obtain NASS reports, data products, and services:

INTERNET ACCESS

All NASS reports are available free of charge on the worldwide Internet. For access, connect to the Internet and go to the NASS Home Page at: www.usda.gov/nass/. Select "Today's Reports" or Publications and then Reports Calendar or Publications and then Search, by Title or Subject.

E-MAIL SUBSCRIPTION

All NASS reports are available by subscription free of charge direct to your e-mail address. Starting with the NASS Home Page at www.usda.gov/nass/, click on **Publications**, then click on the **Subscribe by E-mail** button which takes you to the page describing e-mail delivery of reports. Finally, click on **Go to the Subscription Page** and follow the instructions.

PRINTED REPORTS OR DATA PRODUCTS

CALL OUR TOLL-FREE ORDER DESK: 800-999-6779 (U.S. and Canada)
Other areas, please call 703-605-6220 FAX: 703-605-6900
(Visa, MasterCard, check, or money order acceptable for payment.)

ASSISTANCE

For **assistance** with general agricultural statistics or further information about NASS or its products or services, contact the **Agricultural Statistics Hotline** at **800-727-9540**, 7:30 a.m. to 4:00 p.m. ET, or e-mail: nass@nass.usda.gov.

The U.S. Department of Agriculture (USDA) prohibits discrimination in all its programs and activities on the basis of race, color, national origin, age, disability, and where applicable, sex, marital status, familial status, parental status, religion, sexual orientation, genetic information, political beliefs, reprisal, or because all or part of an individual's income is derived from any public assistance program. (Not all prohibited bases apply to all programs.) Persons with disabilities who require alternative means for communication of program information (Braille, large print, audiotape, etc.) should contact USDA's TARGET Center at (202) 720-2600 (voice and TDD).

To file a complaint of discrimination, write to USDA, Director, Office of Civil Rights, 1400 Independence Avenue, S.W., Washington, D.C. 20250-9410, or call (800) 795-3272 (voice) or (202) 720-6382 (TDD). USDA is an equal opportunity provider and employer.