



NASS

FACT FINDERS FOR AGRICULTURE
UNITED STATES DEPARTMENT OF AGRICULTURE

Washington, D.C.

Chickens And Eggs

Released December 22, 2005, by the National Agricultural Statistics Service (NASS), Agricultural Statistics Board, U.S. Department of Agriculture. For information on "Layers and Eggs" call Sharyn Lavender at (202) 720-3244, for "Chicks Hatched" call Jody Roberts at (202) 690-8632, office hours 7:30 a.m. to 4:00 p.m. ET.

November Egg Production Up 1 Percent

U.S. egg production totaled 7.54 billion during November 2005, up 1 percent from last year. Production included 6.48 billion table eggs, and 1.06 billion hatching eggs, of which 996 million were broiler-type and 60 million were egg-type. The number of layers during November 2005 averaged 347 million, up 1 percent from a year earlier. November egg production per 100 layers was 2,175 eggs, up slightly from November 2004.

All layers in the U.S. on December 1, 2005, totaled 348 million, up 1 percent from a year ago. The 348 million layers consisted of 291 million layers producing table-type eggs, 54.9 million layers producing broiler-type hatching eggs, and 2.61 million layers producing egg-type hatching eggs. Rate of lay per day on December 1, 2005, averaged 72.4 eggs per 100 layers, down 1 percent from December 1, 2004.

Egg-Type Chicks Hatched Down 15 Percent

Egg-type chicks hatched during November 2005 totaled 32.8 million, down 15 percent from November 2004. Eggs in incubators totaled 34.7 million on December 1, 2005, down 3 percent from a year ago.

Domestic placements of egg-type pullet chicks for future hatchery supply flocks by leading breeders totaled 181,000 during November 2005, down 20 percent from November 2004.

Broiler-Type Chicks Hatched Up 2 Percent

Broiler-type chicks hatched during November 2005 totaled 747 million, up 2 percent from November 2004. Eggs in incubators totaled 658 million on December 1, 2005, up 2 percent from a year earlier.

Leading breeders placed 7.30 million broiler-type pullet chicks for future domestic hatchery supply flocks during November 2005, up 2 percent from November 2004.

Contents

Page

U.S. Average Number of Layers on Hand and Egg Production	1
U.S. Layers on Hand and Egg Production by Type, Forced Molt, and Pullets	3
Layers on Hand and Eggs Produced by State	5
Egg Production by Type and State	7
Forced Molt	9
Egg-Type Hatchery	11
Egg-Type Intended Placements	13
Broiler-Type Hatchery	13
Broiler-Type Intended Placements	15
Procedures and Reliability	16

**All Layers: Average Number on Hand During the Month,
United States, 2002-05**

Month	2002	2003	2004	2005
	<i>1,000 Layers</i>	<i>1,000 Layers</i>	<i>1,000 Layers</i>	<i>1,000 Layers</i>
Dec ¹	341,243	341,131	339,789	345,960
Jan	340,885	341,996	338,550	348,142
Feb	339,529	341,661	339,647	348,985
Mar	339,434	340,971	341,700	347,272
Apr	338,809	339,268	342,612	344,041
May	337,566	337,356	342,786	342,837
Jun	337,339	335,979	342,835	341,484
Jul	337,849	335,417	342,479	340,160
Aug	338,397	335,565	342,983	340,898
Sep	339,511	335,426	344,118	342,328
Oct	340,461	336,557	345,056	343,987
Nov	340,490	339,387	344,797	346,596

¹ December preceding year.

**Eggs: Production During the Month by Type,
United States, 2004-05 ¹**

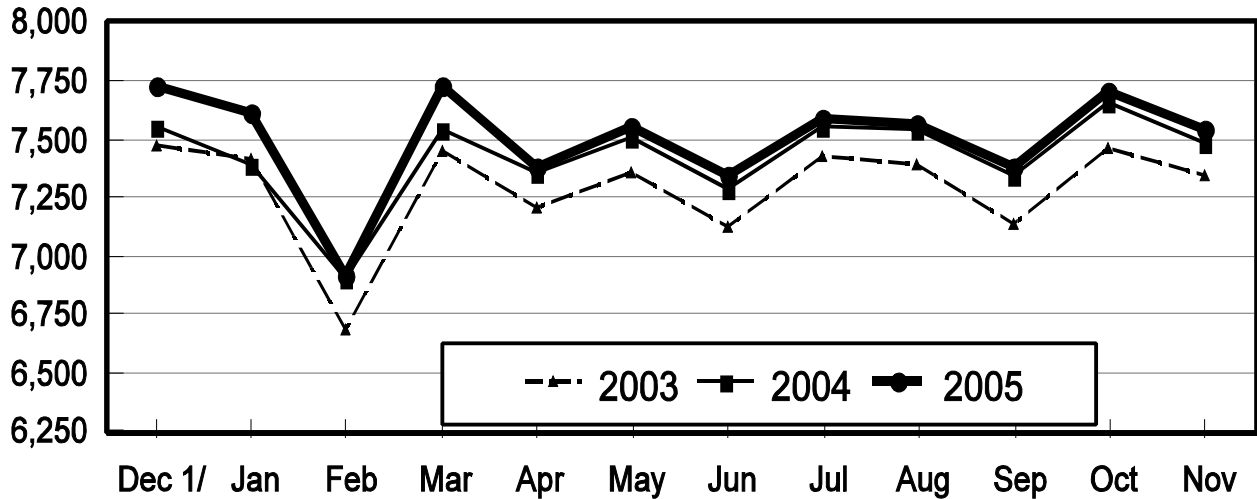
Month	Total Eggs		Table Eggs		Hatching Eggs	
	2004	2005	2004	2005	2004	2005
	<i>Million Eggs</i>	<i>Million Eggs</i>	<i>Million Eggs</i>	<i>Million Eggs</i>	<i>Million Eggs</i>	<i>Million Eggs</i>
Dec ²	7,554	7,728	6,492	6,643	1,063	1,085
Jan	7,386	7,617	6,323	6,518	1,063	1,100
Feb	6,901	6,919	5,895	5,906	1,007	1,014
Mar	7,547	7,727	6,453	6,599	1,095	1,129
Apr	7,358	7,384	6,284	6,288	1,074	1,097
May	7,513	7,558	6,393	6,425	1,120	1,133
Jun	7,289	7,346	6,209	6,250	1,080	1,096
Jul	7,557	7,584	6,455	6,465	1,102	1,120
Aug	7,538	7,565	6,443	6,462	1,095	1,104
Sep	7,344	7,377	6,282	6,308	1,063	1,070
Oct	7,659	7,701	6,569	6,597	1,090	1,104
Nov	7,482	7,538	6,435	6,482	1,047	1,056
During Year	89,131	90,044	76,236	76,943	12,896	13,108

¹ Totals may not add due to rounding.

² December preceding year.

All Egg Production United States, 2003 - 2005 During the Month

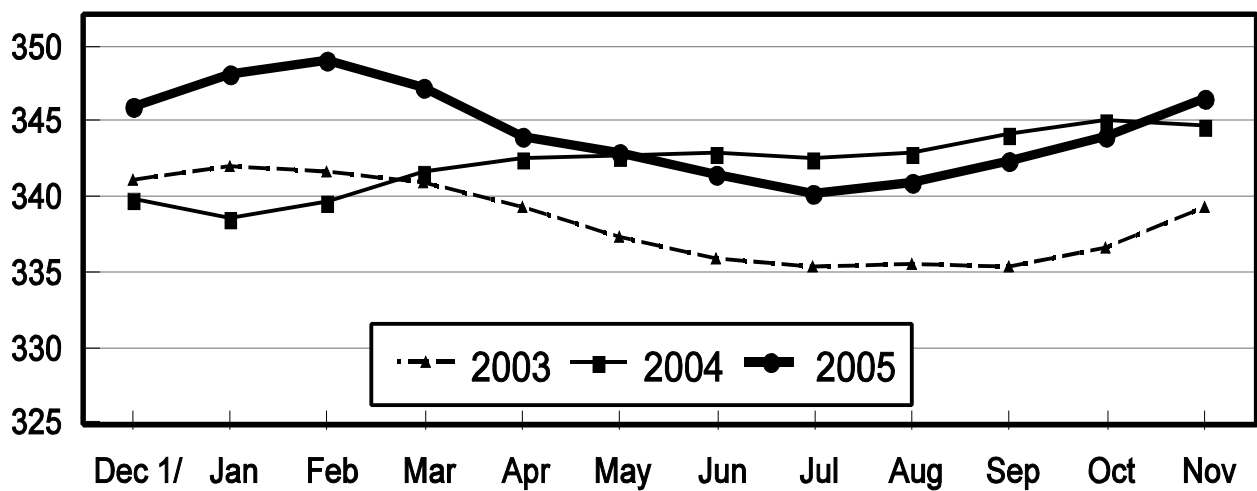
Million Eggs



1/ Previous Year

Average Number of Layers United States, 2003 - 2005 During the Month

Million Layers



1/ Previous Year

**Layers and Eggs: Layers on Hand and Eggs Produced by Type,
and Forced Molt, United States, October-November 2004-05¹**

Item	Unit	2004	2005 ²	2005 as % of 2004
Layers During Oct	1,000			
All Layers		345,056	343,987	100
Table Egg Type		286,427	286,378	100
Hatching Egg Type		58,629	57,609	98
Broiler-Type Hatching		56,073	55,123	98
Egg-Type Hatching		2,556	2,486	97
Eggs per 100 Layers During Oct	Number			
All Layers		2,220	2,239	101
Table Egg Type		2,293	2,304	100
Hatching Egg Type		1,859	1,916	103
Broiler-Type Hatching		1,833	1,894	103
Egg-Type Hatching		2,426	2,414	100
Eggs Produced During Oct	Million			
All Layers		7,659	7,701	101
Table Egg Type		6,569	6,597	100
Hatching Egg Type		1,090	1,104	101
Broiler-Type Hatching		1,028	1,044	102
Egg-Type Hatching		62	60	97
Layers on Nov 1	1,000			
All Layers		345,267	344,908	100
Table Egg Type		286,895	287,137	100
Hatching Egg Type		58,372	57,771	99
Broiler-Type Hatching		55,873	55,273	99
Egg-Type Hatching		2,499	2,498	100
Eggs per 100 Layers on Nov 1	Number			
All Layers		71.7	72.4	101
Table Egg Type		74.2	74.7	101
Hatching Egg Type		59.6	61.2	103
Broiler-Type Hatching		58.7	60.4	103
Egg-Type Hatching		79.8	78.9	99
Forced Molt Layers on Nov 1	Percent			
Percent Being Molted		4.2	3.1	74
Percent with Molt Completed		23.7	24.2	102
Layers Sold for Slaughter During Oct	1,000	15,643	13,663	87
Layers Rendered, Died, Destroyed, Composted or Disappeared For Any Reason During Oct	1,000	8,203	5,701	69
Pullets on Nov 1	1,000	99,370	98,925	100
Pullets Added During Oct ³	1,000	24,807	22,424	90

¹ Totals may not add due to rounding.

² Revised.

³ Pullet chicks less than 3 days old added to pullet flocks.

**Layers and Eggs: Layers on Hand and Eggs Produced by Type,
and Forced Molt, United States, November-December 2004-05 ¹**

Item	Unit	2004	2005	2005 as % of 2004
Layers During Nov	1,000			
All Layers		344,797	346,596	101
Table Egg Type		286,596	288,920	101
Hatching Egg Type		58,201	57,676	99
Broiler-Type Hatching		55,686	55,116	99
Egg-Type Hatching		2,515	2,560	102
Eggs per 100 Layers During Nov	Number			
All Layers		2,170	2,175	100
Table Egg Type		2,245	2,244	100
Hatching Egg Type		1,799	1,831	102
Broiler-Type Hatching		1,774	1,807	102
Egg-Type Hatching		2,346	2,344	100
Eggs Produced During Nov	Million			
All Layers		7,482	7,538	101
Table Egg Type		6,435	6,482	101
Hatching Egg Type		1,047	1,056	101
Broiler-Type Hatching		988	996	101
Egg-Type Hatching		59	60	102
Layers on Dec 1	1,000			
All Layers		344,278	348,243	101
Table Egg Type		286,271	290,687	102
Hatching Egg Type		58,007	57,557	99
Broiler-Type Hatching		55,484	54,944	99
Egg-Type Hatching		2,523	2,613	104
Eggs per 100 Layers on Dec 1	Number			
All Layers		72.8	72.4	99
Table Egg Type		75.4	74.7	99
Hatching Egg Type		60.1	60.6	101
Broiler-Type Hatching		59.2	59.8	101
Egg-Type Hatching		78.0	77.3	99
Forced Molt Layers on Dec 1	Percent			
Percent Being Molted		2.6	2.8	108
Percent with Molt Completed		23.7	23.1	97
Layers Sold for Slaughter During Nov	1,000	14,760	14,281	97
Layers Rendered, Died, Destroyed, Composted or Disappeared For Any Reason During Nov	1,000	8,395	6,850	82
Pullets on Dec 1	1,000	101,624	96,499	95
Pullets Added During Nov ²	1,000	23,430	22,999	98

¹ Totals may not add due to rounding.

² Pullet chicks less than 3 days old added to pullet flocks.

**Layers and Eggs: Layers on Hand and Eggs Produced by State
and United States, During October 2004-05**

State	Table Egg Layers in Flocks 30,000 and Above		All Layers ¹		Eggs per 100 for All Layers ¹	
	2004	2005 ²	2004	2005 ²	2004	2005 ²
	<i>1,000</i>	<i>1,000</i>	<i>1,000</i>	<i>1,000</i>	<i>Number</i>	<i>Number</i>
AL	1,885	1,727	9,233	9,120	1,939	1,897
AR	4,739	4,499	15,375	14,790	1,938	2,008
CA	20,048	19,104	20,578	19,629	2,289	2,216
CO	3,473	3,174	4,015	3,733	2,291	2,411
CT	2,794	2,946	2,844	3,001	2,426	2,333
FL	10,763	11,030	11,202	11,526	2,303	2,343
GA	11,227	10,016	20,323	19,081	2,140	2,170
HI	465	475	505	496	1,960	1,855
IL	3,964	4,402	4,206	4,626	2,378	2,399
IN	22,448	23,066	23,238	23,788	2,276	2,299
IA	45,434	48,694	46,197	49,351	2,260	2,286
ME	2,729	3,958	2,781	4,019	2,229	2,065
MD	3,074	2,459	3,215	2,578	2,208	2,366
MI	7,363	7,520	7,613	7,770	2,246	2,342
MN	10,188	10,732	10,771	11,243	2,265	2,313
MS	1,696	1,664	7,007	6,871	1,955	1,994
MO	6,031	5,626	7,303	6,849	2,328	2,292
NE	11,969	11,848	12,044	11,923	2,233	2,273
NY	3,733	3,781	4,054	4,105	2,467	2,412
NC	3,355	3,412	10,826	10,832	1,977	2,031
OH	27,989	27,337	28,467	27,856	2,234	2,265
OK	1,916	1,883	4,016	3,823	1,967	2,066
OR	2,785	2,710	2,974	2,893	2,387	2,454
PA	22,126	22,026	23,835	23,778	2,333	2,317
SC	4,128	3,840	5,222	5,037	2,202	2,204
SD	3,199	3,218	3,399	3,318	2,354	2,140
TX	14,119	13,480	18,515	17,790	2,220	2,254
VA	1,312	1,493	3,163	3,444	2,150	2,149
WA	4,956	4,918	5,017	4,979	2,452	2,229
WI	4,334	4,352	4,850	4,837	2,247	2,315
Oth Sts ³	16,097	15,047	22,268	20,901	2,191	2,273
US	280,339	280,437	345,056	343,987	2,220	2,239

¹ Includes all layers and eggs produced in both table egg and hatching egg flocks regardless of size.

² Revised.

³ Not published separately to avoid disclosing data for individual operations.

**Layers and Eggs: Layers on Hand and Eggs Produced by State
and United States, During November 2004-05**

State	Table Egg Layers in Flocks 30,000 and Above		All Layers ¹		Eggs per 100 for All Layers ¹	
	2004	2005	2004	2005	2004	2005
	<i>1,000</i>	<i>1,000</i>	<i>1,000</i>	<i>1,000</i>	<i>Number</i>	<i>Number</i>
AL	1,901	1,725	9,300	9,126	1,871	1,841
AR	4,746	4,460	15,202	14,817	1,881	1,923
CA	20,086	19,102	20,614	19,587	2,231	2,190
CO	3,458	3,261	3,998	3,806	2,201	2,338
CT	2,890	2,970	2,942	3,023	2,277	2,316
FL	10,523	11,010	10,954	11,511	2,301	2,285
GA	11,148	9,969	20,179	19,038	2,086	2,112
HI	472	478	512	495	1,895	1,818
IL	4,108	4,224	4,345	4,446	2,301	2,362
IN	22,494	23,631	23,246	24,348	2,241	2,230
IA	45,809	48,793	46,550	49,501	2,187	2,204
ME	2,679	3,964	2,737	4,024	2,083	2,237
MD	3,060	2,502	3,214	2,646	2,240	2,268
MI	7,353	7,867	7,603	8,117	2,302	2,279
MN	10,503	10,690	11,069	11,215	2,177	2,256
MS	1,708	1,655	6,906	6,759	1,940	1,938
MO	6,062	5,746	7,266	6,935	2,243	2,149
NE	11,962	11,856	12,037	11,931	2,202	2,146
NY	3,723	3,837	4,045	4,163	2,398	2,378
NC	3,295	3,306	10,826	10,828	1,921	1,939
OH	27,694	27,826	28,149	28,364	2,210	2,168
OK	1,906	1,882	4,000	3,855	1,875	1,971
OR	2,675	2,682	2,864	2,855	2,304	2,487
PA	21,910	22,330	23,630	24,096	2,306	2,249
SC	4,184	3,900	5,264	5,076	2,185	2,147
SD	3,196	3,209	3,346	3,309	2,301	2,206
TX	14,221	14,057	18,562	18,359	2,160	2,228
VA	1,363	1,603	3,227	3,528	2,107	2,126
WA	4,909	4,913	4,969	4,973	2,355	2,172
WI	4,472	4,317	4,982	4,813	2,168	2,285
Oth Sts ²	16,062	15,213	22,259	21,052	2,152	2,199
US	280,572	282,978	344,797	346,596	2,170	2,175

¹ Includes all layers and eggs produced in both table egg and hatching egg flocks regardless of size.

² Not published separately to avoid disclosing data for individual operations.

**Egg Production: By Type, State, and United States,
October 2004-05 ¹**

State	Total Production		Table Eggs ²		Hatching Eggs ²	
	2004	2005 ³	2004	2005 ³	2004	2005 ³
	<i>Million Eggs</i>	<i>Million Eggs</i>	<i>Million Eggs</i>	<i>Million Eggs</i>	<i>Million Eggs</i>	<i>Million Eggs</i>
AL	179	173	44	39	135	134
AR	298	297	114	106	184	191
CA	471	435				
CO	92	90				
CT	69	70				
FL	258	270	251	262	7	8
GA	435	414	263	237	172	177
HI	9.9	9.2	9.9	9.2	0	0
IL	100	111	96	108	4	3
IN	529	547	516	535	13	12
IA	1,044	1,128				
ME	62	83				
MD	71	61	69	59	2	2
MI	171	182				
MN	244	260	236	252	8	8
MS	137	137	39	40	98	97
MO	170	157				
NE	269	271	269	271	0	0
NY	100	99				
NC	214	220	83	85	131	135
OH	636	631				
OK	79	79	45	45	34	34
OR	71	71	69	69	2	2
PA	556	551	541	535	15	16
SC	115	111	95	90	20	21
SD	80	71	80	71	0	0
TX	411	401				
VA	68	74	33	36	35	38
WA	123	111				
WI	109	112				
Oth Sts ⁴	488	475	392	381	97	94
US	7,659	7,701	6,569	6,597	1,090	1,104

¹ Totals may not add due to rounding.

² Data by type of flock not shown for some States to avoid disclosing individual operations.

³ Revised.

⁴ Not published separately to avoid disclosing data for individual operations.

**Egg Production: By Type, State, and United States,
November 2004-05 ¹**

State	Total Production		Table Eggs ²		Hatching Eggs ²	
	2004	2005	2004	2005	2004	2005
	<i>Million Eggs</i>	<i>Million Eggs</i>	<i>Million Eggs</i>	<i>Million Eggs</i>	<i>Million Eggs</i>	<i>Million Eggs</i>
AL	174	168	42	39	132	129
AR	286	285	111	103	175	182
CA	460	429				
CO	88	89				
CT	67	70				
FL	252	263	245	254	7	9
GA	421	402	257	234	164	168
HI	9.7	9.0	9.7	9.0	0	0
IL	100	105	96	102	4	3
IN	521	543	509	531	12	12
IA	1,018	1,091				
ME	57	90				
MD	72	60	70	58	2	2
MI	175	185				
MN	241	253	233	245	8	8
MS	134	131	40	39	94	92
MO	163	149				
NE	265	256	265	256	0	0
NY	97	99				
NC	208	210	79	78	129	132
OH	622	615				
OK	75	76	43	43	32	33
OR	66	71	64	69	2	2
PA	545	542	530	526	15	16
SC	115	109	96	89	19	20
SD	77	73	77	73	0	0
TX	401	409				
VA	68	75	34	40	34	35
WA	117	108				
WI	108	110				
Oth Sts ³	479	463	388	376	92	87
US	7,482	7,538	6,435	6,482	1,047	1,056

¹ Totals may not add due to rounding.

² Data by type of flock not shown for some States to avoid disclosing individual operations.

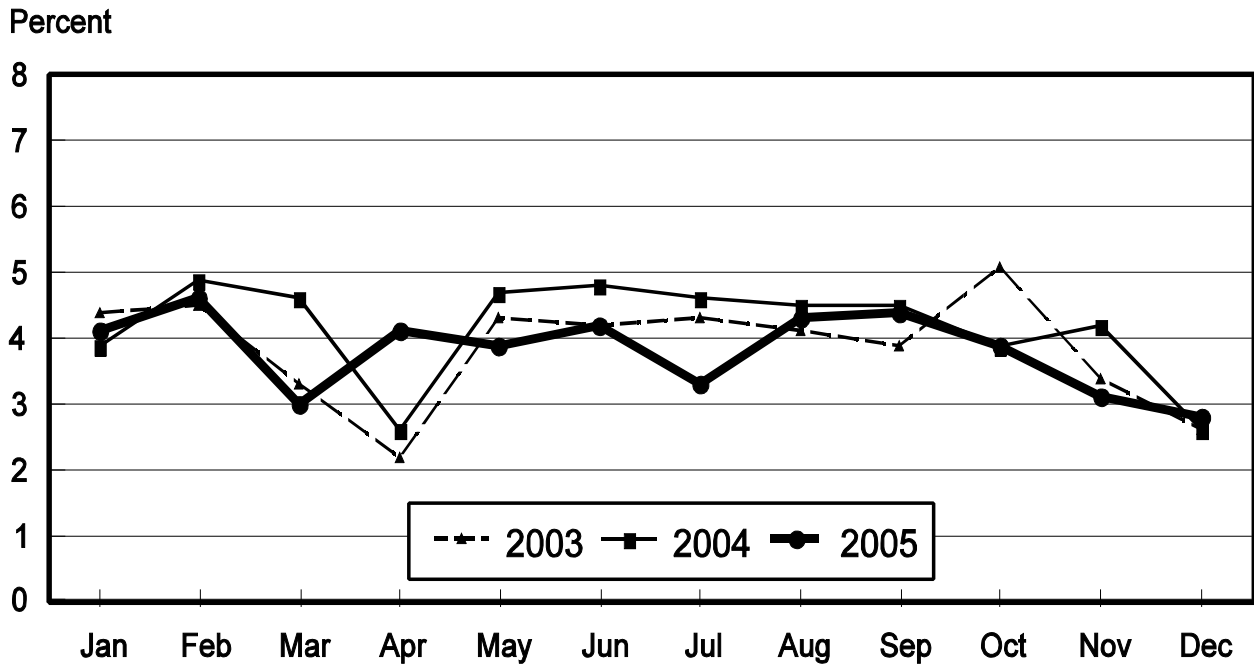
³ Not published separately to avoid disclosing data for individual operations.

**Forced Molt: Percent of All Layers by Month,
United States, 2004-05 ¹**

Month	Percent Being Molted		Percent with Molt Completed	
	2004	2005	2004	2005
	<i>Percent</i>	<i>Percent</i>	<i>Percent</i>	<i>Percent</i>
Jan	3.9	4.1	22.8	23.2
Feb	4.9	4.6	22.7	21.7
Mar	4.6	3.0	23.4	22.8
Apr	2.6	4.1	23.4	22.6
May	4.7	4.0	22.2	22.3
Jun	4.8	4.2	23.1	23.0
Jul	4.6	3.3	24.0	22.6
Aug	4.5	4.3	23.4	22.0
Sep	4.5	4.4	23.3	22.4
Oct	3.9	3.9	23.6	23.3
Nov	4.2	3.1	23.7	24.2
Dec	2.6	2.8	23.7	23.1

¹ As of first of month.

**All Layers: Percent Being Molted
United States, 2003 - 2005
First of the Month**



**Forced Molt: Percent of All Layers by State
and United States, December 2004-05 ¹**

State	Percent Being Molted		Percent with Molt Completed	
	2004	2005	2004	2005
	<i>Percent</i>	<i>Percent</i>	<i>Percent</i>	<i>Percent</i>
AL	0.0	0.5	5.0	7.5
AR	1.0	1.0	10.5	11.5
CA	3.0	2.0	33.0	32.0
CO	2.1	1.5	23.0	21.5
CT	3.4	0.0	10.4	11.0
FL	2.0	7.0	21.5	34.0
GA	2.0	1.5	17.0	13.5
HI	8.5	6.0	52.0	53.0
IL	1.0	0.5	34.0	33.5
IN	0.0	4.0	33.0	28.0
IA	5.0	4.0	34.0	33.5
ME	0.0	0.0	0.0	0.0
MD	5.5	0.0	31.0	41.0
MI	3.5	0.5	32.0	25.0
MN	3.5	2.0	22.0	27.0
MS	0.0	1.0	12.5	9.5
MO	0.5	7.5	23.0	19.0
NE	6.0	8.0	21.0	28.0
NY	1.5	2.0	5.5	8.0
NC	0.5	0.0	7.0	7.5
OH	3.5	2.0	29.0	18.0
OK	0.0	0.0	5.5	5.0
OR	4.0	4.0	27.5	35.0
PA	1.0	1.5	13.0	19.5
SC	2.0	14.0	32.5	15.0
SD	2.8	4.5	41.2	19.0
TX	1.5	1.0	21.0	20.0
VA	0.0	0.0	14.0	13.0
WA	11.0	6.5	33.0	41.0
WI	3.0	4.0	27.5	29.5
Oth Sts ²	3.3	1.6	26.8	28.1
US	2.6	2.8	23.7	23.1

¹ As of first of month.

² Not published separately to avoid disclosing data for individual operations.

**Hatchery Production: Eggs in Incubators, Chicks Hatched,
and Placements by Type, United States, November-December 2004-05**

Item	2004	2005	2005 as % of 2004
	<i>1,000</i>	<i>1,000</i>	<i>Percent</i>
Egg-Type			
Eggs in Incubators on Dec 1	35,612	34,704	97
Chicks Hatched During Nov	38,758	32,752	85
Chicks Hatched Jan thru Nov	399,972	400,115	100
Pullets Hatched During Nov for Intended Placements in Hatchery Supply Flocks	225	181	80
7-18 Months Earlier ¹	3,317	2,829	85
Broiler-Type			
Eggs in Incubators on Dec 1	645,112	657,579	102
Chicks Hatched During Nov	730,353	747,335	102
Chicks Hatched Jan thru Nov	8,540,161	8,665,040	101
Pullets Hatched During Nov for Intended Placements in Hatchery Supply Flocks	7,128	7,298	102
7-15 Months Earlier ²	61,511	63,006	102

¹ 2005 includes pullet chicks hatched May 2004 through Apr 2005.

² 2005 includes pullet chicks hatched Aug 2004 through Apr 2005.

**Egg-Type Eggs in Incubators: By Region and United States,
December 1, 2004-05**

Region	2004	2005	2005 as % of 2004
	<i>1,000</i>	<i>1,000</i>	<i>Percent</i>
North Atlantic	6,892	6,172	90
E North Central	7,656	7,907	103
W North Central	6,977	7,175	103
South Atlantic	4,590	3,783	82
South Central	5,234	5,657	108
West	4,263	4,010	94
US	35,612	34,704	97

Regions:

North Atlantic = CT, ME, MA, NH, NJ, NY, PA, RI, VT.

E North Central = IL, IN, MI, OH, WI.

W North Central = IA, KS, MN, MO, NE, ND, SD.

South Atlantic = DE, FL, GA, MD, NC, SC, VA, WV.

South Central = AL, AR, KY, LA, MS, OK, TN, TX.

West = AK, AZ, CA, CO, HI, ID, MT, NM, NV, OR, UT, WA, WY.

**Egg-Type Chicks Hatched: By State and United States,
November 2004-05**

State	During November			Jan-Nov		
	2004	2005	2005 as % of 2004	2004	2005	2005 as % of 2004
	<i>1,000</i>	<i>1,000</i>	<i>Percent</i>	<i>1,000</i>	<i>1,000</i>	<i>Percent</i>
FL	830	768	93	7,016	7,706	110
GA	2,035	1,803	89	25,815	24,742	96
IN	4,872	4,551	93	53,748	55,938	104
IA	6,465	5,510	85	66,197	67,923	103
MN	820	1,126	137	9,689	11,895	123
PA	5,787	4,008	69	56,861	52,854	93
Oth Sts ¹	17,949	14,986	83	180,646	179,057	99
US	38,758	32,752	85	399,972	400,115	100

¹ Not published separately to avoid disclosing data for individual operations.

Egg-Type Chicks Hatched: By Month, United States, 2003-05

Month	By Months				Cumulative			
	2003	2004	2005	2005 as % of 2004	2003	2004	2005	2005 as % of 2004
	<i>1,000</i>	<i>1,000</i>	<i>1,000</i>	<i>Percent</i>	<i>1,000</i>	<i>1,000</i>	<i>1,000</i>	<i>Percent</i>
Jan	33,521	35,155	37,936	108	33,521	35,155	37,936	108
Feb	30,474	31,923	33,932	106	63,995	67,078	71,868	107
Mar	36,775	37,545	41,824	111	100,770	104,623	113,692	109
Apr	37,820	37,466	38,267	102	138,590	142,089	151,959	107
May	37,630	38,347	37,449	98	176,220	180,436	189,408	105
Jun	36,602	37,508	34,537	92	212,822	217,944	223,945	103
Jul	35,578	34,919	35,310	101	248,400	252,863	259,255	103
Aug	33,199	36,854	38,953	106	281,599	289,717	298,208	103
Sep	35,763	36,631	33,788	92	317,362	326,348	331,996	102
Oct	34,812	34,866	35,367	101	352,174	361,214	367,363	102
Nov	30,241	38,758	32,752	85	382,415	399,972	400,115	100
Dec	33,588	37,332			416,003	437,304		

**Intended Placements: Egg-Type Pullet Chicks for Hatchery Supply
Flocks by Month and Total, United States, 2003-05¹**

Month	Pullet Chicks Hatched			2005 as % of 2004	Cumulative Potential Placements Relative to Current Supply Flocks 7-18 Months Earlier ²		
	2003	2004	2005		2004	2005	2006
	<i>1,000</i>	<i>1,000</i>	<i>1,000</i>	<i>Percent</i>	<i>1,000</i>	<i>1,000</i>	<i>1,000</i>
Jan	210	124	157	127	3,012	3,088	2,834
Feb	225	285	208	73	2,960	3,080	2,854
Mar	319	401	314	78	2,927	3,210	2,797
Apr	280	343	308	90	2,923	3,142	2,967
May	289	157	190	121	3,047	3,100	2,888
Jun	309	212	184	87	3,139	3,006	2,844
Jul	230	222	242	109	3,198	2,995	
Aug	188	318	261	82	3,112	3,028	
Sep	273	205	375	183	3,172	2,951	
Oct	310	268	189	71	3,254	2,864	
Nov	319	225	181	80	3,317	2,829	
Dec	246	235			3,185	2,862	
Total	3,198	2,995					

¹ Reported by leading breeders. Coverage may not be 100 percent. Includes expected pullet chicks from eggs sold during the preceding month at the rate of 125 pullet chicks per 30 dozen case of eggs.

² For November 2005, includes breeder pullet chicks hatched May 2004 through Apr 2005. The 7-18 months represent the first laying cycle. Molting and additional laying cycles will increase the cumulative potential placements.

**Broiler-Type Eggs in Incubators: By Region
and United States, December 1, 2004-05**

Region	2004	2005	2005 as % of 2004
	<i>1,000</i>	<i>1,000</i>	<i>Percent</i>
North Atlantic	12,355	12,397	100
E North Central	8,405	8,869	106
W North Central	22,075	22,682	103
South Atlantic	232,241	237,993	102
South Central	344,548	350,557	102
West	25,488	25,081	98
US	645,112	657,579	102

**Broiler-Type Chicks Hatched: By State
and United States, November 2004-05**

State	During November			Jan-Nov		
	2004	2005	2005 as % of 2004	2004	2005	2005 as % of 2004
	<i>1,000</i>	<i>1,000</i>	<i>Percent</i>	<i>1,000</i>	<i>1,000</i>	<i>Percent</i>
AL	100,202	107,654	107	1,195,602	1,226,862	103
AR	99,960	102,199	102	1,225,154	1,215,769	99
DE	12,820	13,384	104	148,101	158,553	107
FL	4,735	4,930	104	53,502	53,986	101
GA	110,788	111,709	101	1,301,912	1,313,792	101
KY	23,064	23,329	101	275,706	277,923	101
LA	13,587	14,162	104	151,336	161,453	107
MD	29,502	30,906	105	342,456	346,289	101
MS	66,989	63,516	95	781,262	759,009	97
NC	62,238	63,993	103	717,012	722,794	101
OK	22,506	22,898	102	256,386	258,711	101
PA	12,964	13,574	105	143,760	157,549	110
SC	15,958	17,043	107	152,741	199,213	130
TX	50,554	51,441	102	595,381	599,624	101
VA	22,555	22,704	101	259,511	256,206	99
CA, MO, TN, & WV	60,699	62,791	103	695,468	719,261	103
19 Sts ¹	709,121	726,233	102	8,295,290	8,426,994	102
Oth Sts ²	21,232	21,102	99	244,871	238,046	97
US	730,353	747,335	102	8,540,161	8,665,040	101

¹ States in the weekly hatchery production estimating program.

² Not published separately to avoid disclosing data for individual operations.

Broiler-Type Chicks Hatched: By Month, United States, 2003-05

Month	By Months				Cumulative			
	2003	2004	2005	2005 as % of 2004	2003	2004	2005	2005 as % of 2004
	<i>1,000</i>	<i>1,000</i>	<i>1,000</i>	<i>Percent</i>	<i>1,000</i>	<i>1,000</i>	<i>1,000</i>	<i>Percent</i>
Jan	759,674	774,004	796,026	103	759,674	774,004	796,026	103
Feb	693,549	728,401	731,274	100	1,453,223	1,502,405	1,527,300	102
Mar	774,354	791,915	815,782	103	2,227,577	2,294,320	2,343,082	102
Apr	760,638	774,629	789,780	102	2,988,215	3,068,949	3,132,862	102
May	792,813	810,484	823,406	102	3,781,028	3,879,433	3,956,268	102
Jun	774,679	786,603	796,001	101	4,555,707	4,666,036	4,752,269	102
Jul	777,838	806,658	807,654	100	5,333,545	5,472,694	5,559,923	102
Aug	784,107	810,285	811,678	100	6,117,652	6,282,979	6,371,601	101
Sep	739,515	769,934	769,771	100	6,857,167	7,052,913	7,141,372	101
Oct	735,235	756,895	776,333	103	7,592,402	7,809,808	7,917,705	101
Nov	707,891	730,353	747,335	102	8,300,293	8,540,161	8,665,040	101
Dec	780,321	793,090			9,080,614	9,333,251		

**Intended Placements: Broiler-Type Pullet Chicks for Hatchery
Supply Flocks by Month and Total, 2003-05 ¹**

Month	Pullet Chicks Hatched			2005 as % of 2004	Cumulative Potential Placements Relative to Current Supply Flocks 7-15 Months Earlier ²		
	2003	2004	2005		2004	2005	2006
	<i>1,000</i>	<i>1,000</i>	<i>1,000</i>	<i>Percent</i>	<i>1,000</i>	<i>1,000</i>	<i>1,000</i>
US Place- ments							
Jan	6,269	6,811	6,409	94	60,300	62,084	62,860
Feb	6,659	7,340	7,325	100	61,106	62,460	63,060
Mar	6,888	6,815	7,077	104	61,421	62,794	63,416
Apr	6,735	6,402	6,800	106	61,600	63,574	63,776
May	7,323	7,590	7,783	103	61,643	63,220	64,311
Jun	6,748	6,890	7,109	103	61,930	63,008	64,284
Jul	7,071	6,688	6,657	100	62,020	62,965	
Aug	7,253	7,280	7,484	103	62,096	62,972	
Sep	6,654	7,758	7,132	92	62,113	62,707	
Oct	6,312	6,457	6,944	108	62,180	62,894	
Nov	6,946	7,128	7,298	102	61,511	63,006	
Dec	6,978	6,772			61,848	63,509	
Annual Total	81,836	83,931					
Total Place- ments ³							
Jan	7,388	7,812	7,804	100			
Feb	8,094	8,251	8,664	105			
Mar	8,400	7,801	8,709	112			
Apr	8,062	7,288	7,995	110			
May	8,604	8,693	8,995	103			
Jun	8,341	8,590	8,571	100			
Jul	8,555	8,003	7,846	98			
Aug	8,608	8,416	9,084	108			
Sep	8,338	9,184	8,683	95			
Oct	7,695	7,678	8,683	113			
Nov	8,246	8,411	8,830	105			
Dec	8,185	8,263					
Annual Total	98,516	98,390					

¹ Reported by leading breeders. Coverage may not be 100 percent. Includes expected pullet chicks from eggs sold during the preceding month at the rate of 125 pullet chicks per 30 dozen case of eggs.

² For Nov 2005, includes breeder pullet chicks hatched Aug 2004 through Apr 2005.

³ U.S. production of intended placements worldwide.

Procedures and Reliability

Data Sources: Primary data for the "**Chickens and Eggs**" report are from weekly and/or monthly questionnaires sent to producers. An attempt is made to collect information for layer and egg estimates from each known contractor and independent producer who has at least 30,000 table egg layers, flocks of hatchery supply layers, or pullet only operations with at least 500 pullets. Coverage for operations with less than 30,000 table egg layers are estimated each month based on data reported in December. Approximately 900 contractors, independent egg producers, and pullet only operations are contacted each month. All known hatcheries, approximately 330, are contacted for information on a weekly and/or monthly basis.

Revisions: The previous month's estimates are subject to revision if late reports or corrected data indicates a different level. Additionally, revisions after the monthly report will be made at the end of the marketing year and published in the annual reports of "**Chickens and Eggs Summary**" and "**Hatchery Production**".

Procedures and Reliability: Operations are mailed a questionnaire and given adequate time to respond by mail. Those that do not respond are phoned. Great care is exercised to ensure that all operations are accounted for during each survey period. However, there are usually missing reports that must be accounted for in the estimates.

Sound statistical methodology is employed to derive estimates from the reported data. All data are checked for unusual values. All operations' data are compared to their own past operating profiles and also to trends from other operations. Data for missing operations are estimated based on similar operations or historical data. Survey data are subject to non-sampling errors such as omissions and mistakes in reporting and in processing. While these errors cannot be measured directly, they are minimized by reviewing all data for consistency and reasonableness.

Egg-type chicks hatched consist of all chicks of egg-type domesticated breeds including males and chicks destined for hatchery supply flocks and research purposes. The relationship of chicks hatched to chicken inventory and poultry marketings is carefully monitored. The disposition of egg-type chicks hatched prior to placement into the laying flock can vary significantly, which can make comparisons to changes in layer inventory inconsistent over time.

Intended placement data reported by leading breeders include pullet chicks expected from eggs sold the preceding month. The breeders in this report account for a large percentage of replacement pullets for hatchery supply flocks. Production of replacement pullets by these breeders indicates the number of pullets available to hatchery supply flocks several months before the pullets will actually move into the flocks. "Hatchery Supply Flocks" include all generations of layers which could lay eggs to supply a hatchery. This includes the generations of parents, grandparents, great-grandparents, pedigree, etc. Also included are research flocks, vaccine flocks, and specific pathogen-free flocks. The broiler cumulative potential placements are a moving total of the intended placements 7-15 months earlier. The egg-type cumulative potential placements of 7-18 months represent the first laying cycle. Molting and additional laying cycles will increase the cumulative potential placements of egg-type hatching flocks.

ACCESS TO REPORTS!!

For your convenience, there are several ways to obtain NASS reports, data products, and services:

INTERNET ACCESS

All NASS reports are available free of charge on the worldwide Internet. For access, connect to the Internet and go to the NASS Home Page at: www.usda.gov/nass/. Select "Today's Reports" or Publications and then Reports Calendar or Publications and then Search, by Title or Subject.

E-MAIL SUBSCRIPTION

All NASS reports are available by subscription free of charge direct to your e-mail address. Starting with the NASS Home Page at www.usda.gov/nass/, click on **Publications**, then click on the **Subscribe by E-mail** button which takes you to the page describing e-mail delivery of reports. Finally, click on **Go to the Subscription Page** and follow the instructions.

PRINTED REPORTS OR DATA PRODUCTS

CALL OUR TOLL-FREE ORDER DESK: 800-999-6779 (U.S. and Canada)
Other areas, please call 703-605-6220 FAX: 703-605-6900
(Visa, MasterCard, check, or money order acceptable for payment.)

ASSISTANCE

For **assistance** with general agricultural statistics or further information about NASS or its products or services, contact the **Agricultural Statistics Hotline** at **800-727-9540**, 7:30 a.m. to 4:00 p.m. ET, or e-mail: nass@nass.usda.gov.

The U.S. Department of Agriculture (USDA) prohibits discrimination in all its programs and activities on the basis of race, color, national origin, age, disability, and where applicable, sex, marital status, familial status, parental status, religion, sexual orientation, genetic information, political beliefs, reprisal, or because all or part of an individual's income is derived from any public assistance program. (Not all prohibited bases apply to all programs.) Persons with disabilities who require alternative means for communication of program information (Braille, large print, audiotape, etc.) should contact USDA's TARGET Center at (202) 720-2600 (voice and TDD).

To file a complaint of discrimination, write to USDA, Director, Office of Civil Rights, 1400 Independence Avenue, S.W., Washington, D.C. 20250-9410, or call (800) 795-3272 (voice) or (202) 720-6382 (TDD). USDA is an equal opportunity provider and employer.