



NASS

FACT FINDERS FOR AGRICULTURE
UNITED STATES DEPARTMENT OF AGRICULTURE

Washington, D.C.

Chickens And Eggs

Released January 23, 2006, by the National Agricultural Statistics Service (NASS), Agricultural Statistics Board, U.S. Department of Agriculture. For information on "Layers and Eggs" call Sharyn Lavender at (202) 720-3244, for "Chicks Hatched" call Jody Roberts at (202) 690-8632, office hours 7:30 a.m. to 4:00 p.m. ET.

December Egg Production Up 1 Percent

U.S. egg production totaled 7.79 billion during December 2005, up 1 percent from last year. Production included 6.70 billion table eggs, and 1.09 billion hatching eggs, of which 1.03 billion were broiler-type and 64 million were egg-type. The number of layers during December 2005 averaged 348 million, up 1 percent from a year earlier. December egg production per 100 layers was 2,237 eggs, up slightly from December 2004.

All layers in the U.S. on January 1, 2006, totaled 349 million, up slightly from a year ago. The 349 million layers consisted of 291 million layers producing table-type eggs, 55.6 million layers producing broiler-type hatching eggs, and 2.74 million layers producing egg-type hatching eggs. Rate of lay per day on January 1, 2006, averaged 71.8 eggs per 100 layers, up 1 percent from January 1, 2005.

Egg-Type Chicks Hatched Down 3 Percent

Egg-type chicks hatched during December 2005 totaled 36.2 million, down 3 percent from December 2004. Eggs in incubators totaled 35.5 million on January 1, 2006 up 3 percent from a year ago.

Domestic placements of egg-type pullet chicks for future hatchery supply flocks by leading breeders totaled 248,000 during December 2005, up 6 percent from December 2004.

Broiler-Type Chicks Hatched Up 2 Percent

Broiler-type chicks hatched during December 2005 totaled 808 million, up 2 percent from December 2004. Eggs in incubators totaled 661 million on January 1, 2006, up 2 percent from a year earlier.

Leading breeders placed 7.11 million broiler-type pullet chicks for future domestic hatchery supply flocks during December 2005, up 5 percent from December 2004.

Contents

Page

U.S. Average Number of Layers on Hand and Egg Production	1
U.S. Layers on Hand and Eggs Produced by Type, Forced Molt, and Pullets	3
Layers on Hand and Eggs Produced by State	5
Egg Production by Type and State	7
Forced Molt	9
Egg-Type Hatchery	11
Egg-Type Intended Placements	13
Broiler-Type Hatchery	13
Broiler-Type Intended Placements	15
Procedures and Reliability	16

**All Layers: Average Number on Hand During the Month,
United States, 2003-06**

Month	2003	2004	2005	2006
	<i>1,000 Layers</i>	<i>1,000 Layers</i>	<i>1,000 Layers</i>	<i>1,000 Layers</i>
Dec ¹	341,131	339,789	345,960	348,300
Jan	341,996	338,550	348,142	
Feb	341,661	339,647	348,985	
Mar	340,971	341,700	347,272	
Apr	339,268	342,612	344,041	
May	337,356	342,786	342,837	
Jun	335,979	342,835	341,484	
Jul	335,417	342,479	340,160	
Aug	335,565	342,983	340,898	
Sep	335,426	344,118	342,328	
Oct	336,557	345,056	343,987	
Nov	339,387	344,797	346,145	

¹ December preceding year.

**Eggs: Production During the Month by Type,
United States, 2005-06 ¹**

Month	Total Eggs		Table Eggs		Hatching Eggs	
	2005	2006	2005	2006	2005	2006
	<i>Million Eggs</i>	<i>Million Eggs</i>	<i>Million Eggs</i>	<i>Million Eggs</i>	<i>Million Eggs</i>	<i>Million Eggs</i>
Dec ²	7,728	7,791	6,643	6,702	1,085	1,089
Jan	7,617		6,518		1,100	
Feb	6,919		5,906		1,014	
Mar	7,727		6,599		1,129	
Apr	7,384		6,288		1,097	
May	7,558		6,425		1,133	
Jun	7,346		6,250		1,096	
Jul	7,584		6,465		1,120	
Aug	7,565		6,462		1,104	
Sep	7,377		6,308		1,070	
Oct	7,701		6,597		1,104	
Nov	7,533		6,477		1,056	
During Year	90,039		76,938		13,108	

¹ Totals may not add due to rounding.

² December preceding year.

Table Egg Layers

United States, 2004 - 2006

First of the Month

Million Layers

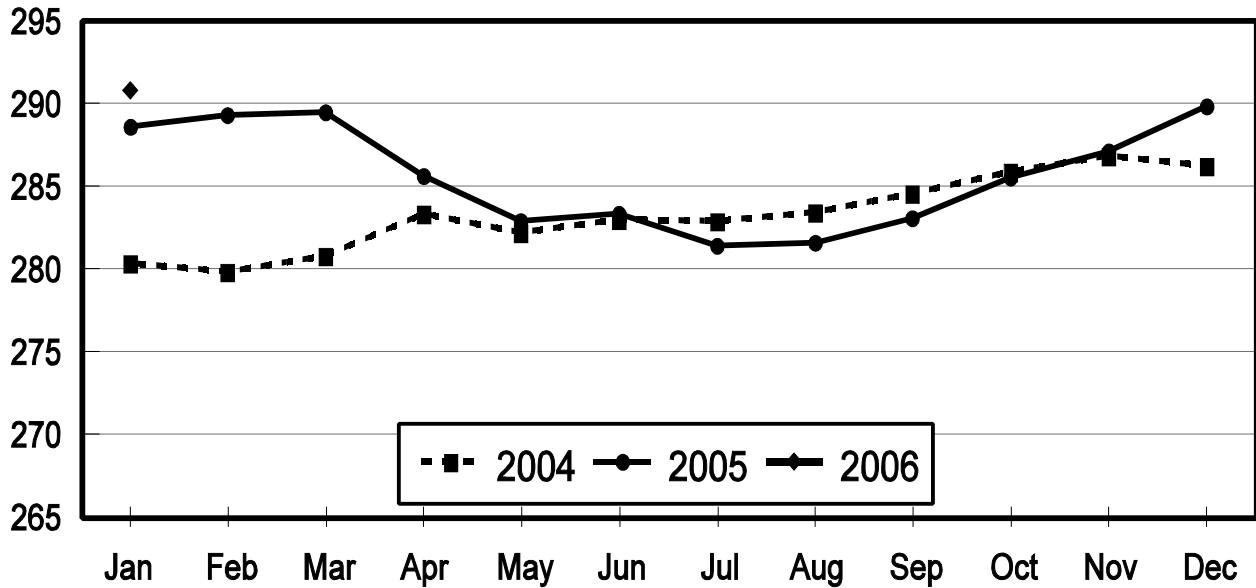
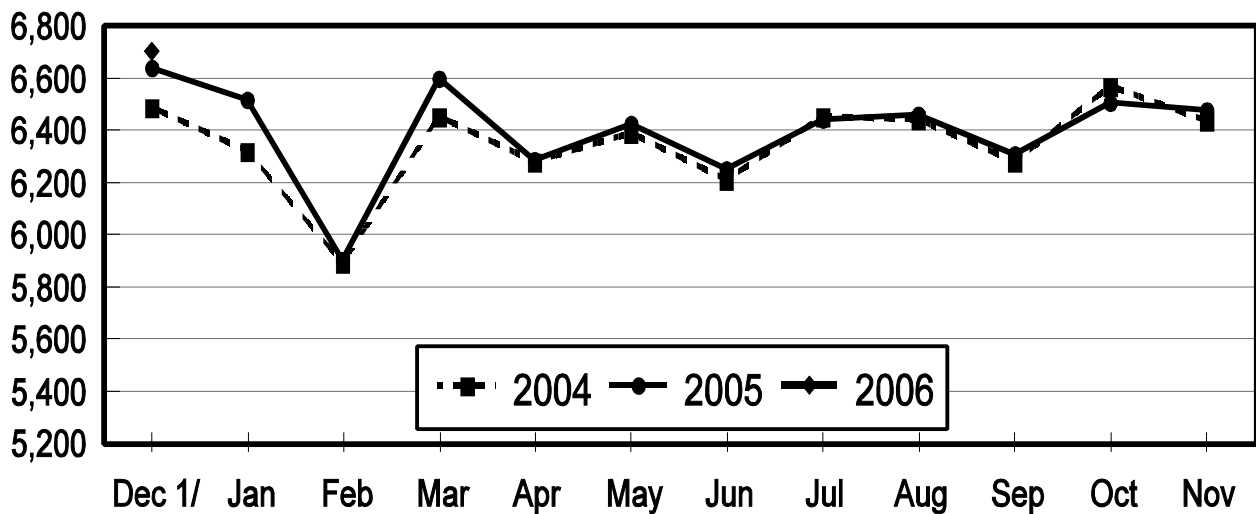


Table Egg Production

United States, 2004 - 2006

During the Month

Million Eggs



1/ Previous Year

**Layers and Eggs: Layers on Hand and Eggs Produced by Type,
and Forced Molt, United States, November-December 2004-05 ¹**

Item	Unit	2004	2005 ²	2005 as % of 2004
Layers During Nov	1,000			
All Layers		344,797	346,145	100
Table Egg Type		286,596	288,508	101
Hatching Egg Type		58,201	57,637	99
Broiler-Type Hatching		55,686	55,066	99
Egg-Type Hatching		2,515	2,571	102
Eggs per 100 Layers During Nov	Number			
All Layers		2,170	2,176	100
Table Egg Type		2,245	2,245	100
Hatching Egg Type		1,799	1,832	102
Broiler-Type Hatching		1,774	1,809	102
Egg-Type Hatching		2,346	2,334	99
Eggs Produced During Nov	Million			
All Layers		7,482	7,533	101
Table Egg Type		6,435	6,477	101
Hatching Egg Type		1,047	1,056	101
Broiler-Type Hatching		988	996	101
Egg-Type Hatching		59	60	102
Layers on Dec 1	1,000			
All Layers		344,278	347,341	101
Table Egg Type		286,271	289,863	101
Hatching Egg Type		58,007	57,478	99
Broiler-Type Hatching		55,484	54,844	99
Egg-Type Hatching		2,523	2,634	104
Eggs per 100 Layers on Dec 1	Number			
All Layers		72.8	72.5	100
Table Egg Type		75.4	74.8	99
Hatching Egg Type		60.1	60.6	101
Broiler-Type Hatching		59.2	59.8	101
Egg-Type Hatching		78.0	77.3	99
Forced Molt Layers on Dec 1	Percent			
Percent Being Molted		2.6	2.8	108
Percent with Molt Completed		23.7	23.4	99
Layers Sold for Slaughter During Nov	1,000	14,760	14,232	96
Layers Rendered, Died, Destroyed, Composted or Disappeared For Any Reason During Nov	1,000	8,395	6,892	82
Pullets on Dec 1	1,000	101,624	96,345	95
Pullets Added During Nov ³	1,000	23,430	23,490	100

¹ Totals may not add due to rounding.

² Revised.

³ Pullet chicks less than 3 days old added to pullet flocks.

**Layers and Eggs: Layers on Hand and Eggs Produced by Type,
and Forced Molt, United States, December-January 2004-06**

Item	Unit	2004	2005	2005 as % of 2004
Layers During Dec	1,000			
All Layers		345,960	348,300	101
Table Egg Type		287,473	290,366	101
Hatching Egg Type		58,487	57,934	99
Broiler-Type Hatching		55,864	55,244	99
Egg-Type Hatching		2,623	2,690	103
Eggs per 100 Layers During Dec	Number			
All Layers		2,234	2,237	100
Table Egg Type		2,311	2,308	100
Hatching Egg Type		1,855	1,880	101
Broiler-Type Hatching		1,829	1,855	101
Egg-Type Hatching		2,402	2,379	99
Eggs Produced During Dec	Million			
All Layers		7,728	7,791	101
Table Egg Type		6,643	6,702	101
Hatching Egg Type		1,085	1,089	100
Broiler-Type Hatching		1,022	1,025	100
Egg-Type Hatching		63	64	102
		2005	2006	2006 as % of 2005
Layers on Jan 1	1,000			
All Layers		347,603	349,227	100
Table Egg Type		288,656	290,852	101
Hatching Egg Type		58,947	58,375	99
Broiler-Type Hatching		56,232	55,635	99
Egg-Type Hatching		2,715	2,740	101
Eggs per 100 Layers on Jan 1	Number			
All Layers		71.3	71.8	101
Table Egg Type		73.6	74.0	101
Hatching Egg Type		59.7	60.7	102
Broiler-Type Hatching		58.8	60.0	102
Egg-Type Hatching		76.7	76.4	100
Forced Molt Layers on Jan 1	Percent			
Percent Being Molted		4.1	4.3	105
Percent with Molt Completed		23.2	22.9	99
Layers Sold for Slaughter During Dec	1,000	14,272	14,195	99
Layers Rendered, Died, Destroyed, Composted or Disappeared For Any Reason During Dec	1,000	5,781	5,461	94
Pullets on Jan 1	1,000	101,343	97,601	96
Pullets Added During Dec ¹	1,000	24,778	23,829	96

¹ Pullet chicks less than 3 days old added to pullet flocks.

**Layers and Eggs: Layers on Hand and Eggs Produced by State
and United States, During November 2004-05**

State	Table Egg Layers in Flocks 30,000 and Above		All Layers ¹		Eggs per 100 for All Layers ¹	
	2004	2005 ²	2004	2005 ²	2004	2005 ²
	<i>1,000</i>	<i>1,000</i>	<i>1,000</i>	<i>1,000</i>	<i>Number</i>	<i>Number</i>
AL	1,901	1,725	9,300	9,126	1,871	1,841
AR	4,746	4,460	15,202	14,817	1,881	1,923
CA	20,086	19,102	20,614	19,545	2,231	2,195
CO	3,458	3,259	3,998	3,796	2,201	2,345
CT	2,890	2,970	2,942	3,023	2,277	2,316
FL	10,523	11,010	10,954	11,511	2,301	2,285
GA	11,148	9,969	20,179	19,038	2,086	2,112
HI	472	478	512	495	1,895	1,818
IL	4,108	4,224	4,345	4,446	2,301	2,362
IN	22,494	23,631	23,246	24,348	2,241	2,230
IA	45,809	48,793	46,550	49,501	2,187	2,204
ME	2,679	3,964	2,737	4,024	2,083	2,237
MD	3,060	2,502	3,214	2,646	2,240	2,268
MI	7,353	7,867	7,603	8,117	2,302	2,279
MN	10,503	10,690	11,069	11,215	2,177	2,256
MS	1,708	1,655	6,906	6,759	1,940	1,938
MO	6,062	5,746	7,266	6,935	2,243	2,149
NE	11,962	11,856	12,037	11,931	2,202	2,146
NY	3,723	3,837	4,045	4,163	2,398	2,378
NC	3,295	3,306	10,826	10,828	1,921	1,939
OH	27,694	27,826	28,149	28,364	2,210	2,168
OK	1,906	1,535	4,000	3,508	1,875	2,024
OR	2,675	2,682	2,864	2,855	2,304	2,487
PA	21,910	22,330	23,630	24,096	2,306	2,249
SC	4,184	3,900	5,264	5,076	2,185	2,147
SD	3,196	3,209	3,346	3,309	2,301	2,206
TX	14,221	14,057	18,562	18,359	2,160	2,228
VA	1,363	1,603	3,227	3,528	2,107	2,126
WA	4,909	4,855	4,969	4,915	2,355	2,197
WI	4,472	4,317	4,982	4,814	2,168	2,285
Oth Sts ³	16,062	15,213	22,259	21,057	2,152	2,199
US	280,572	282,571	344,797	346,145	2,170	2,176

¹ Includes all layers and eggs produced in both table egg and hatching egg flocks regardless of size.

² Revised.

³ Not published separately to avoid disclosing data for individual operations.

**Layers and Eggs: Layers on Hand and Eggs Produced by State
and United States, During December 2004-05**

State	Table Egg Layers in Flocks 30,000 and Above		All Layers ¹		Eggs per 100 for All Layers ¹	
	2004	2005	2004	2005	2004	2005
	<i>1,000</i>	<i>1,000</i>	<i>1,000</i>	<i>1,000</i>	<i>Number</i>	<i>Number</i>
AL	1,850	1,685	9,255	9,013	1,945	1,908
AR	4,794	4,280	15,291	14,559	1,962	1,985
CA	20,037	19,073	20,524	19,484	2,290	2,258
CO	3,442	3,349	3,986	3,889	2,333	2,417
CT	2,892	2,964	2,948	3,020	2,374	2,351
FL	10,216	11,012	10,677	11,511	2,313	2,293
GA	10,991	9,974	20,123	19,156	2,172	2,130
HI	473	465	512	479	1,973	1,837
IL	4,190	4,258	4,417	4,486	2,196	2,251
IN	22,756	23,836	23,501	24,573	2,281	2,307
IA	47,238	49,593	47,979	50,350	2,209	2,230
ME	2,625	3,914	2,687	3,980	2,345	2,362
MD	3,094	2,602	3,226	2,748	2,418	2,256
MI	7,231	8,010	7,482	8,260	2,326	2,349
MN	10,555	10,605	11,103	11,135	2,252	2,317
MS	1,706	1,671	6,959	6,704	1,940	1,984
MO	6,073	5,874	7,285	7,024	2,265	2,093
NE	11,925	11,853	12,000	11,928	2,267	2,222
NY	3,821	3,937	4,147	4,267	2,460	2,461
NC	3,370	3,333	10,934	10,959	1,994	2,017
OH	27,371	28,498	27,839	29,037	2,324	2,304
OK	1,898	1,182	4,046	3,169	1,903	2,051
OR	2,672	2,598	2,861	2,771	2,342	2,454
PA	22,174	22,578	23,920	24,444	2,379	2,320
SC	4,263	3,856	5,332	4,999	2,307	2,260
SD	3,079	3,200	3,179	3,300	2,328	2,333
TX	13,841	14,271	18,257	18,643	2,295	2,317
VA	1,313	1,593	3,185	3,525	2,135	2,156
WA	4,832	4,824	4,897	4,889	2,348	2,270
WI	4,675	4,265	5,167	4,766	2,245	2,329
Oth Sts ²	16,119	15,269	22,241	21,232	2,230	2,284
US	281,516	284,422	345,960	348,300	2,234	2,237

¹ Includes all layers and eggs produced in both table egg and hatching egg flocks regardless of size.

² Not published separately to avoid disclosing data for individual operations.

**Egg Production: By Type, State, and United States,
November 2004-05 ¹**

State	Total Production		Table Eggs ²		Hatching Eggs ²	
	2004	2005 ³	2004	2005 ³	2004	2005 ³
	<i>Million Eggs</i>	<i>Million Eggs</i>	<i>Million Eggs</i>	<i>Million Eggs</i>	<i>Million Eggs</i>	<i>Million Eggs</i>
AL	174	168	42	39	132	129
AR	286	285	111	103	175	182
CA	460	429				
CO	88	89				
CT	67	70				
FL	252	263	245	254	7	9
GA	421	402	257	234	164	168
HI	9.7	9.0	9.7	9.0	0	0
IL	100	105	96	102	4	3
IN	521	543	509	531	12	12
IA	1,018	1,091				
ME	57	90				
MD	72	60	70	58	2	2
MI	175	185				
MN	241	253	233	245	8	8
MS	134	131	40	39	94	92
MO	163	149				
NE	265	256	265	256	0	0
NY	97	99				
NC	208	210	79	78	129	132
OH	622	615				
OK	75	71	43	38	32	33
OR	66	71	64	69	2	2
PA	545	542	530	526	15	16
SC	115	109	96	89	19	20
SD	77	73	77	73	0	0
TX	401	409				
VA	68	75	34	40	34	35
WA	117	108				
WI	108	110				
Oth Sts ⁴	479	463	388	376	92	87
US	7,482	7,533	6,435	6,477	1,047	1,056

¹ Totals may not add due to rounding.

² Data by type of flock not shown for some States to avoid disclosing individual operations.

³ Revised.

⁴ Not published separately to avoid disclosing data for individual operations.

**Egg Production: By Type, State, and United States,
December 2004-05 ¹**

State	Total Production		Table Eggs ²		Hatching Eggs ²	
	2004	2005	2004	2005	2004	2005
	<i>Million Eggs</i>	<i>Million Eggs</i>	<i>Million Eggs</i>	<i>Million Eggs</i>	<i>Million Eggs</i>	<i>Million Eggs</i>
AL	180	172	43	40	137	132
AR	300	289	116	102	184	187
CA	470	440				
CO	93	94				
CT	70	71				
FL	247	264	240	255	7	9
GA	437	408	264	233	173	175
HI	10.1	8.8	10.1	8.8	0	0
IL	97	101	94	97	3	4
IN	536	567	523	555	13	12
IA	1,060	1,123				
ME	63	94				
MD	78	62	76	60	2	2
MI	174	194				
MN	250	258	242	249	8	9
MS	135	133	40	40	95	93
MO	165	147				
NE	272	265	272	265	0	0
NY	102	105				
NC	218	221	82	83	136	138
OH	647	669				
OK	77	65	44	32	33	33
OR	67	68	65	66	2	2
PA	569	567	552	549	17	18
SC	123	113	104	93	19	20
SD	74	77	74	77	0	0
TX	419	432				
VA	68	76	34	40	34	36
WA	115	111				
WI	116	111				
Oth Sts ³	496	485	405	395	92	90
US	7,728	7,791	6,643	6,702	1,085	1,089

¹ Totals may not add due to rounding.

² Data by type of flock not shown for some States to avoid disclosing individual operations.

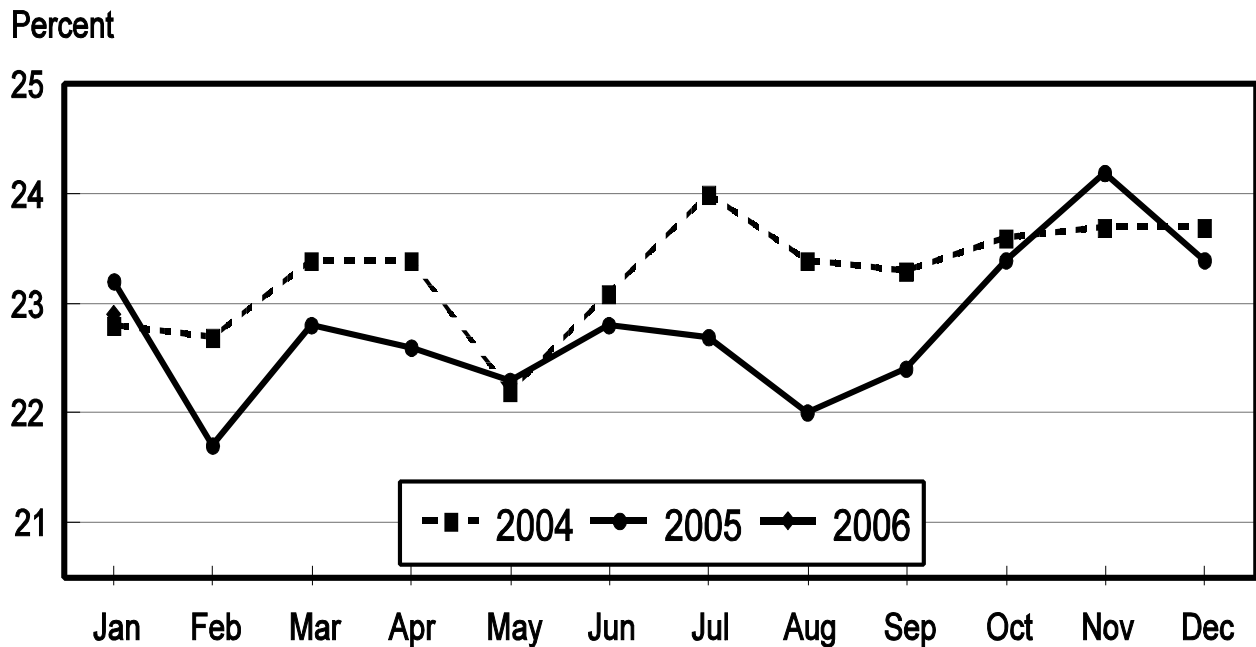
³ Not published separately to avoid disclosing data for individual operations.

**Forced Molt: Percent of All Layers by Month,
United States, 2005-06 ¹**

Month	Percent Being Molted		Percent with Molt Completed	
	2005	2006	2005	2006
	<i>Percent</i>	<i>Percent</i>	<i>Percent</i>	<i>Percent</i>
Jan	4.1	4.3	23.2	22.9
Feb	4.6		21.7	
Mar	3.0		22.8	
Apr	4.1		22.6	
May	4.0		22.3	
Jun	4.2		23.0	
Jul	3.3		22.6	
Aug	4.3		22.0	
Sep	4.4		22.4	
Oct	3.9		23.3	
Nov	3.1		24.2	
Dec	2.8		23.4	

¹ As of first of month.

All Layers: Percent Molt Completed United States, 2004 - 2006 First of the Month



**Forced Molt: Percent of All Layers by State
and United States, January 2005-06 ¹**

State	Percent Being Molted		Percent with Molt Completed	
	2005 ²	2006	2005 ²	2006
	<i>Percent</i>	<i>Percent</i>	<i>Percent</i>	<i>Percent</i>
AL	1.5	1.0	4.5	7.0
AR	2.0	0.5	10.5	11.5
CA	3.0	9.0	36.0	31.0
CO	12.5	9.0	20.0	23.5
CT	3.4	0.0	10.4	11.5
FL	8.5	6.0	20.0	36.0
GA	3.0	2.5	16.0	13.0
HI	5.5	4.5	44.0	54.0
IL	11.0	7.0	28.5	32.0
IN	4.5	3.5	31.5	29.0
IA	5.5	6.0	36.5	31.5
ME	0.0	0.0	0.0	0.0
MD	8.0	3.0	33.5	37.0
MI	10.5	2.5	30.0	21.0
MN	5.0	5.5	24.5	23.0
MS	2.0	2.0	11.0	9.0
MO	1.5	5.0	22.5	23.5
NE	5.5	8.0	22.0	28.5
NY	2.5	3.5	5.0	8.0
NC	1.5	0.0	6.5	8.5
OH	4.0	4.0	24.0	16.5
OK	0.0	0.0	5.0	13.5
OR	6.5	11.0	28.5	27.5
PA	4.5	4.0	13.0	18.5
SC	2.5	5.5	30.0	25.5
SD	4.0	4.0	34.5	19.5
TX	2.5	3.5	20.0	24.5
VA	0.0	2.5	11.5	16.5
WA	5.5	6.5	30.0	40.0
WI	4.0	9.5	26.5	30.0
Oth Sts ³	2.6	2.6	25.5	25.9
US	4.1	4.3	23.2	22.9

¹ As of first of month.

² Revised.

³ Not published separately to avoid disclosing data for individual operations.

**Hatchery Production: Eggs in Incubators, Chicks Hatched,
and Placements by Type, United States, December-January 2005-06**

Item	2005	2006	2006 as % of 2005
	<i>1,000</i>	<i>1,000</i>	<i>Percent</i>
Egg-Type			
Eggs in Incubators on Jan 1	34,456	35,547	103
Chicks Hatched During Dec ¹	37,332	36,224	97
Chicks Hatched Jan thru Dec ¹	437,304	436,339	100
Pullets Hatched During Jan for Intended Placements in Hatchery Supply Flocks	235	248	106
7-18 Month Earlier ²	3,185	2,862	90
Broiler-Type			
Eggs in Incubators on Jan 1	650,680	660,613	102
Chicks Hatched During Dec ¹	793,090	807,848	102
Chicks Hatched Jan thru Dec ¹	9,333,251	9,472,888	101
Pullets Hatched During Jan for Intended Placements in Hatchery Supply Flocks	6,772	7,112	105
7-15 Months Earlier ³	61,848	63,509	103

¹ Previous year.

² 2005 includes pullet chicks hatched Jun 2004 through May 2005.

³ 2005 includes pullet chicks hatched Sep 2004 through May 2005.

**Egg-Type Eggs in Incubators: By Region and United States,
January 1, 2005-06**

Region	2005	2006	2006 as % of 2004
	<i>1,000</i>	<i>1,000</i>	<i>Percent</i>
North Atlantic	5,018	6,229	124
E North Central	7,623	7,036	92
W North Central	6,936	8,258	119
South Atlantic	4,508	4,306	96
South Central	5,649	5,949	105
West	4,722	3,769	80
US	34,456	35,547	103

Regions:

North Atlantic = CT, ME, MA, NH, NJ, NY, PA, RI, VT.

E North Central = IL, IN, MI, OH, WI.

W North Central = IA, KS, MN, MO, NE, ND, SD.

South Atlantic = DE, FL, GA, MD, NC, SC, VA, WV.

South Central = AL, AR, KY, LA, MS, OK, TN, TX.

West = AK, AZ, CA, CO, HI, ID, MT, NM, NV, OR, UT, WA, WY.

**Egg-Type Chicks Hatched: By State and United States,
December 2004-05**

State	During December			Jan-Dec		
	2004	2005	2005 as % of 2004	2004	2005	2005 as % of 2004
	<i>1,000</i>	<i>1,000</i>	<i>Percent</i>	<i>1,000</i>	<i>1,000</i>	<i>Percent</i>
FL	1,000	724	72	8,016	8,430	105
GA	2,302	2,384	104	28,117	27,126	96
IN	5,350	5,288	99	59,098	61,226	104
IA	6,135	6,517	106	72,332	74,440	103
MN	818	1,050	128	10,507	12,945	123
PA	5,291	4,889	92	62,152	57,743	93
Oth Sts ¹	16,436	15,372	94	197,082	194,429	99
US	37,332	36,224	97	437,304	436,339	100

¹ Not published separately to avoid disclosing data for individual operations.

Egg-Type Chicks Hatched: By Month, United States, 2003-05

Month	By Months				Cumulative			
	2003	2004	2005	2005 as % of 2004	2003	2004	2005	2005 as % of 2004
	<i>1,000</i>	<i>1,000</i>	<i>1,000</i>	<i>Percent</i>	<i>1,000</i>	<i>1,000</i>	<i>1,000</i>	<i>Percent</i>
Jan	33,521	35,155	37,936	108	33,521	35,155	37,936	108
Feb	30,474	31,923	33,932	106	63,995	67,078	71,868	107
Mar	36,775	37,545	41,824	111	100,770	104,623	113,692	109
Apr	37,820	37,466	38,267	102	138,590	142,089	151,959	107
May	37,630	38,347	37,449	98	176,220	180,436	189,408	105
Jun	36,602	37,508	34,537	92	212,822	217,944	223,945	103
Jul	35,578	34,919	35,310	101	248,400	252,863	259,255	103
Aug	33,199	36,854	38,953	106	281,599	289,717	298,208	103
Sep	35,763	36,631	33,788	92	317,362	326,348	331,996	102
Oct	34,812	34,866	35,367	101	352,174	361,214	367,363	102
Nov	30,241	38,758	32,752	85	382,415	399,972	400,115	100
Dec	33,588	37,332	36,224	97	416,003	437,304	436,339	100

**Intended Placements: Egg-Type Pullet Chicks for Hatchery Supply
Flocks by Month and Total, United States, 2003-05 ¹**

Month	Pullet Chicks Hatched			2005 as % of 2004	Cumulative Potential Placements Relative to Current Supply Flocks 7-18 Months Earlier ²		
	2003	2004	2005		2004	2005	2006
	<i>1,000</i>	<i>1,000</i>	<i>1,000</i>	<i>Percent</i>	<i>1,000</i>	<i>1,000</i>	<i>1,000</i>
Jan	210	124	157	127	3,012	3,088	2,834
Feb	225	285	208	73	2,960	3,080	2,854
Mar	319	401	314	78	2,927	3,210	2,797
Apr	280	343	308	90	2,923	3,142	2,967
May	289	157	190	121	3,047	3,100	2,888
Jun	309	212	184	87	3,139	3,006	2,844
Jul	230	222	242	109	3,198	2,995	2,857
Aug	188	318	261	82	3,112	3,028	
Sep	273	205	375	183	3,172	2,951	
Oct	310	268	189	71	3,254	2,864	
Nov	319	225	181	80	3,317	2,829	
Dec	246	235	248	106	3,185	2,862	
Total	3,198	2,995	2,857	95			

¹ Reported by leading breeders. Coverage may not be 100 percent. Includes expected pullet chicks from eggs sold during the preceding month at the rate of 125 pullet chicks per 30 dozen case of eggs.

² For December 2005, includes breeder pullet chicks hatched Jun 2004 through May 2005. The 7-18 months represent the first laying cycle. Molting and additional laying cycles will increase the cumulative potential placements.

**Broiler-Type Eggs in Incubators: By Region
and United States, January 1, 2005-06**

Region	2005	2006	2006 as % of 2005
	<i>1,000</i>	<i>1,000</i>	<i>Percent</i>
North Atlantic	12,794	11,379	89
E North Central	8,980	9,413	105
W North Central	22,826	22,967	101
South Atlantic	237,049	242,458	102
South Central	344,674	350,504	102
West	24,357	23,892	98
US	650,680	660,613	102

**Broiler-Type Chicks Hatched: By State
and United States, December 2004-05**

State	During December			Jan-Dec		
	2004	2005	2005 as % of 2004	2004	2005	2005 as % of 2004
	<i>1,000</i>	<i>1,000</i>	<i>Percent</i>	<i>1,000</i>	<i>1,000</i>	<i>Percent</i>
AL	108,972	115,375	106	1,304,574	1,342,237	103
AR	112,701	113,858	101	1,337,855	1,329,627	99
DE	13,993	14,741	105	162,094	173,294	107
FL	4,901	5,039	103	58,403	59,025	101
GA	121,845	122,618	101	1,423,757	1,436,410	101
KY	26,158	25,240	96	301,864	303,163	100
LA	14,617	15,064	103	165,953	176,517	106
MD	31,407	32,687	104	373,863	378,976	101
MS	72,519	69,691	96	853,781	828,700	97
NC	65,044	68,078	105	782,056	790,872	101
OK	24,316	24,132	99	280,702	282,843	101
PA	14,060	14,723	105	157,820	172,272	109
SC	16,922	18,537	110	169,663	217,750	128
TX	54,695	56,744	104	650,076	656,368	101
VA	23,882	23,655	99	283,393	279,861	99
CA, MO, TN, & WV	65,792	65,967	100	761,260	785,228	103
19 Sts ¹	771,824	786,149	102	9,067,114	9,213,143	102
Oth Sts ²	21,266	21,699	102	266,137	259,745	98
US	793,090	807,848	102	9,333,251	9,472,888	101

¹ States in the weekly hatchery production estimating program.

² Not published separately to avoid disclosing data for individual operations.

Broiler-Type Chicks Hatched: By Month, United States, 2003-05

Month	By Months				Cumulative			
	2003	2004	2005	2005 as % of 2004	2003	2004	2005	2005 as % of 2004
	<i>1,000</i>	<i>1,000</i>	<i>1,000</i>	<i>Percent</i>	<i>1,000</i>	<i>1,000</i>	<i>1,000</i>	<i>Percent</i>
Jan	759,674	774,004	796,026	103	759,674	774,004	796,026	103
Feb	693,549	728,401	731,274	100	1,453,223	1,502,405	1,527,300	102
Mar	774,354	791,915	815,782	103	2,227,577	2,294,320	2,343,082	102
Apr	760,638	774,629	789,780	102	2,988,215	3,068,949	3,132,862	102
May	792,813	810,484	823,406	102	3,781,028	3,879,433	3,956,268	102
Jun	774,679	786,603	796,001	101	4,555,707	4,666,036	4,752,269	102
Jul	777,838	806,658	807,654	100	5,333,545	5,472,694	5,559,923	102
Aug	784,107	810,285	811,678	100	6,117,652	6,282,979	6,371,601	101
Sep	739,515	769,934	769,771	100	6,857,167	7,052,913	7,141,372	101
Oct	735,235	756,895	776,333	103	7,592,402	7,809,808	7,917,705	101
Nov	707,891	730,353	747,335	102	8,300,293	8,540,161	8,665,040	101
Dec	780,321	793,090	807,848	102	9,080,614	9,333,251	9,472,888	101

**Intended Placements: Broiler-Type Pullet Chicks for Hatchery
Supply Flocks by Month and Total, 2003-05 ¹**

Month	Pullet Chicks Hatched			2005 as % of 2004	Cumulative Potential Placements Relative to Current Supply Flocks 7-15 Months Earlier ²		
	2003	2004	2005		2004	2005	2006
	<i>1,000</i>	<i>1,000</i>	<i>1,000</i>	<i>Percent</i>	<i>1,000</i>	<i>1,000</i>	<i>1,000</i>
US Place- ments							
Jan	6,269	6,811	6,409	94	60,300	62,084	62,860
Feb	6,659	7,340	7,325	100	61,106	62,460	63,060
Mar	6,888	6,815	7,077	104	61,421	62,794	63,416
Apr	6,735	6,402	6,800	106	61,600	63,574	63,776
May	7,323	7,590	7,783	103	61,643	63,220	64,311
Jun	6,748	6,890	7,109	103	61,930	63,008	64,284
Jul	7,071	6,688	6,657	100	62,020	62,965	64,319
Aug	7,253	7,280	7,484	103	62,096	62,972	
Sep	6,654	7,758	7,132	92	62,113	62,707	
Oct	6,312	6,457	6,944	108	62,180	62,894	
Nov	6,946	7,128	7,298	102	61,511	63,006	
Dec	6,978	6,772	7,112	105	61,848	63,509	
Annual Total	81,836	83,931	85,130	101			
Total Place- ments ³							
Jan	7,388	7,812	7,804	100			
Feb	8,094	8,251	8,664	105			
Mar	8,400	7,801	8,709	112			
Apr	8,062	7,288	7,995	110			
May	8,604	8,693	8,995	103			
Jun	8,341	8,590	8,571	100			
Jul	8,555	8,003	7,846	98			
Aug	8,608	8,416	9,084	108			
Sep	8,338	9,184	8,683	95			
Oct	7,695	7,678	8,683	113			
Nov	8,246	8,411	8,830	105			
Dec	8,185	8,263	8,256	100			
Annual Total	98,516	98,390	102,120	104			

¹ Reported by leading breeders. Coverage may not be 100 percent. Includes expected pullet chicks from eggs sold during the preceding month at the rate of 125 pullet chicks per 30 dozen case of eggs.

² For Dec 2005, includes breeder pullet chicks hatched Sep 2004 through May 2005.

³ U.S. production of intended placements worldwide.

Procedures and Reliability

Data Sources: Primary data for the "**Chickens and Eggs**" report are from weekly and/or monthly questionnaires sent to producers. An attempt is made to collect information for layer and egg estimates from each known contractor and independent producer who has at least 30,000 table egg layers, flocks of hatchery supply layers, or pullet only operations with at least 500 pullets. Coverage for operations with less than 30,000 table egg layers are estimated each month based on data reported in December. Approximately 900 contractors, independent egg producers, and pullet only operations are contacted each month. All known hatcheries, approximately 330, are contacted for information on a weekly and/or monthly basis.

Revisions: The previous month's estimates are subject to revision if late reports or corrected data indicates a different level. Additionally, revisions after the monthly report will be made at the end of the marketing year and published in the annual reports of "**Chickens and Eggs Summary**" and "**Hatchery Production**".

Procedures and Reliability: Operations are mailed a questionnaire and given adequate time to respond by mail. Those that do not respond are phoned. Great care is exercised to ensure that all operations are accounted for during each survey period. However, there are usually missing reports that must be accounted for in the estimates.

Sound statistical methodology is employed to derive estimates from the reported data. All data are checked for unusual values. All operations' data are compared to their own past operating profiles and also to trends from other operations. Data for missing operations are estimated based on similar operations or historical data. Survey data are subject to non-sampling errors such as omissions and mistakes in reporting and in processing. While these errors cannot be measured directly, they are minimized by reviewing all data for consistency and reasonableness.

Egg-type chicks hatched consist of all chicks of egg-type domesticated breeds including males and chicks destined for hatchery supply flocks and research purposes. The relationship of chicks hatched to chicken inventory and poultry marketings is carefully monitored. The disposition of egg-type chicks hatched prior to placement into the laying flock can vary significantly, which can make comparisons to changes in layer inventory inconsistent over time.

Intended placement data reported by leading breeders include pullet chicks expected from eggs sold the preceding month. The breeders in this report account for a large percentage of replacement pullets for hatchery supply flocks. Production of replacement pullets by these breeders indicates the number of pullets available to hatchery supply flocks several months before the pullets will actually move into the flocks. "Hatchery Supply Flocks" include all generations of layers which could lay eggs to supply a hatchery. This includes the generations of parents, grandparents, great-grandparents, pedigree, etc. Also included are research flocks, vaccine flocks, and specific pathogen-free flocks. The broiler cumulative potential placements are a moving total of the intended placements 7-15 months earlier. The egg-type cumulative potential placements of 7-18 months represent the first laying cycle. Molting and additional laying cycles will increase the cumulative potential placements of egg-type hatching flocks.

ACCESS TO REPORTS!!

For your convenience, there are several ways to obtain NASS reports, data products, and services:

INTERNET ACCESS

All NASS reports are available free of charge on the worldwide Internet. For access, connect to the Internet and go to the NASS Home Page at: www.nass.usda.gov.

E-MAIL SUBSCRIPTION

All NASS reports are available by subscription free of charge direct to your e-mail address. Starting with the NASS Home Page at www.nass.usda.gov, under the right navigation, *Receive reports by Email*, click on **National** or **State**. Follow the instructions on the screen.

PRINTED REPORTS OR DATA PRODUCTS

CALL OUR TOLL-FREE ORDER DESK: 800-999-6779 (U.S. and Canada)
Other areas, please call 703-605-6220 FAX: 703-605-6900
(Visa, MasterCard, check, or money order acceptable for payment.)

ASSISTANCE

For **assistance** with general agricultural statistics or further information about NASS or its products or services, contact the **Agricultural Statistics Hotline** at **800-727-9540**, 7:30 a.m. to 4:00 p.m. ET, or e-mail: nass@nass.usda.gov.

The U.S. Department of Agriculture (USDA) prohibits discrimination in all its programs and activities on the basis of race, color, national origin, age, disability, and where applicable, sex, marital status, familial status, parental status, religion, sexual orientation, genetic information, political beliefs, reprisal, or because all or part of an individual's income is derived from any public assistance program. (Not all prohibited bases apply to all programs.) Persons with disabilities who require alternative means for communication of program information (Braille, large print, audiotape, etc.) should contact USDA's TARGET Center at (202) 720-2600 (voice and TDD).

To file a complaint of discrimination, write to USDA, Director, Office of Civil Rights, 1400 Independence Avenue, S.W., Washington, D.C. 20250-9410, or call (800) 795-3272 (voice) or (202) 720-6382 (TDD). USDA is an equal opportunity provider and employer.

Prospering in Rural America



February 16-17, 2006
Crystal Gateway
Marriott Hotel
Arlington, Virginia

The theme is "Prospering in Rural America," and the program will highlight the economic development of rural America. In addition, there will be a broad range of sessions, including Shifting Trade Patterns, Chinese Agriculture, Homeland Security, the African Growth & Opportunity Act, Bio-fuel Production and New Energy Forms in Rural Areas, Community Supported Agriculture, and Feedback from the 2007 Farm Bill Listening Sessions.

Agriculture Secretary Mike Johanns and other top experts in agriculture will be among the more than 130 speakers.

Find full program and registration details at www.usda.gov/oce/forum or call toll free, 1-877-572-6043. Forum speeches can be downloaded after February 17, 2006.

www.usda.gov/oce/forum

(877) 572-6043 toll free