



# NASS

FACT FINDERS FOR AGRICULTURE  
UNITED STATES DEPARTMENT OF AGRICULTURE

Washington, D.C.

# Chickens And Eggs

---

Released February 28, 2006, by the National Agricultural Statistics Service (NASS), Agricultural Statistics Board, U.S. Department of Agriculture. For information on "Layers and Eggs" call Sharyn Lavender at (202) 720-3244, for "Chicks Hatched" call Jody Roberts at (202) 690-8632, office hours 7:30 a.m. to 4:00 p.m. ET.

## Update Alert

Page 12 Egg-Type Chicks Hatched: By Month, United States, 2004-2006 column 2004 data corrected

Page 14 Broiler-Type Chicks Hatched: By Month, United States, 2004-2006 column 2004 data corrected

## January Egg Production Up 1 Percent

U.S. egg production totaled 7.72 billion during January 2006, up 1 percent from last year. Production included 6.62 billion table eggs, and 1.10 billion hatching eggs, of which 1.03 billion were broiler-type and 66 million were egg-type. The number of layers during January 2006 averaged 349 million, up slightly from a year earlier. January egg production per 100 layers was 2,211 eggs, up 1 percent from January 2005.

All layers in the U.S. on February 1, 2006, totaled 349 million, up slightly from a year ago. The 349 million layers consisted of 291 million layers producing table-type eggs, 55.6 million layers producing broiler-type hatching eggs, and 2.90 million layers producing egg-type hatching eggs. Rate of lay per day on February 1, 2006, averaged 70.8 eggs per 100 layers, up 1 percent from February 1, 2005.

## Egg-Type Chicks Hatched Down 7 Percent

Egg-type chicks hatched during January 2006 totaled 35.4 million, down 7 percent from January 2005. Eggs in incubators totaled 33.5 million on February 1, 2006 down 2 percent from a year ago.

Domestic placements of egg-type pullet chicks for future hatchery supply flocks by leading breeders totaled 188,000 during January 2006, up 20 percent from January 2005.

## Broiler-Type Chicks Hatched Up 1 Percent

Broiler-type chicks hatched during January 2006 totaled 804 million, up 1 percent from January 2005. Eggs in incubators totaled 661 million on February 1, 2006, up 1 percent from a year earlier.

Leading breeders placed 6.83 million broiler-type pullet chicks for future domestic hatchery supply flocks during January 2006, up 6 percent from January 2005.



## Contents

## Page

U.S. Average Number of Layers on Hand and Egg Production .....	1
U.S. Layers on Hand and Eggs Produced by Type, Forced Molt, and Pullets .....	3
Layers on Hand and Eggs Produced by State .....	5
Egg Production by Type and State .....	7
Forced Molt .....	9
Egg-Type Hatchery .....	11
Egg-Type Intended Placements .....	13
Broiler-Type Hatchery .....	13
Broiler-Type Intended Placements .....	15
Procedures and Reliability .....	16

**All Layers: Average Number on Hand During the Month,  
United States, 2003-06**

Month	2003	2004	2005	2006
	<i>1,000 Layers</i>	<i>1,000 Layers</i>	<i>1,000 Layers</i>	<i>1,000 Layers</i>
Dec <sup>1</sup>	341,131	339,305	345,618	348,545
Jan	341,996	337,948	347,864	349,253
Feb	341,661	338,905	348,791	
Mar	340,971	340,699	346,959	
Apr	339,268	341,550	343,574	
May	337,356	341,562	341,819	
Jun	335,979	342,513	339,856	
Jul	335,417	343,180	338,573	
Aug	335,565	343,653	339,351	
Sep	335,426	344,452	340,914	
Oct	336,557	345,075	342,823	
Nov	339,387	344,633	345,874	

<sup>1</sup> December preceding year.

**Eggs: Production During the Month by Type,  
United States, 2005-06 <sup>1</sup>**

Month	Total Eggs		Table Eggs		Hatching Eggs	
	2005	2006	2005	2006	2005	2006
	<i>Million Eggs</i>	<i>Million Eggs</i>	<i>Million Eggs</i>	<i>Million Eggs</i>	<i>Million Eggs</i>	<i>Million Eggs</i>
Dec <sup>2</sup>	7,721	7,791	6,636	6,703	1,086	1,088
Jan	7,626	7,721	6,526	6,624	1,101	1,097
Feb	6,928		5,915		1,014	
Mar	7,738		6,610		1,129	
Apr	7,407		6,311		1,097	
May	7,572		6,439		1,133	
Jun	7,346		6,250		1,096	
Jul	7,563		6,444		1,120	
Aug	7,528		6,425		1,104	
Sep	7,348		6,279		1,070	
Oct	7,665		6,561		1,104	
Nov	7,514		6,459		1,055	
During Year	89,960		76,859		13,103	

<sup>1</sup> Totals may not add due to rounding.

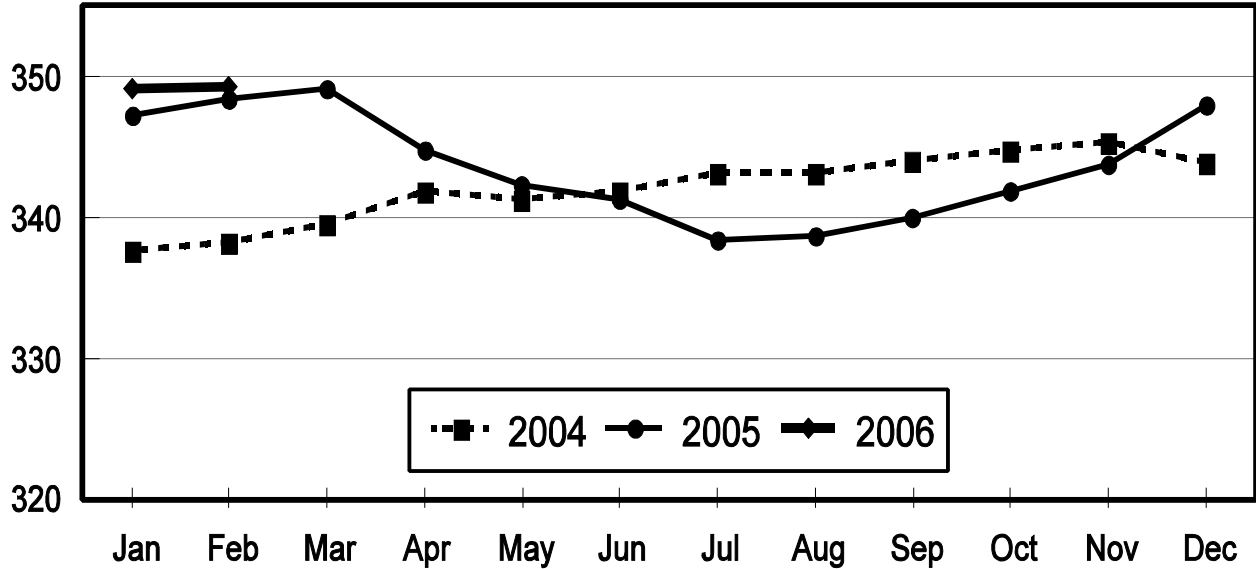
<sup>2</sup> December preceding year.

# All Layers: Inventory

## United States, 2004 - 2006

### First of the Month

Million Layers

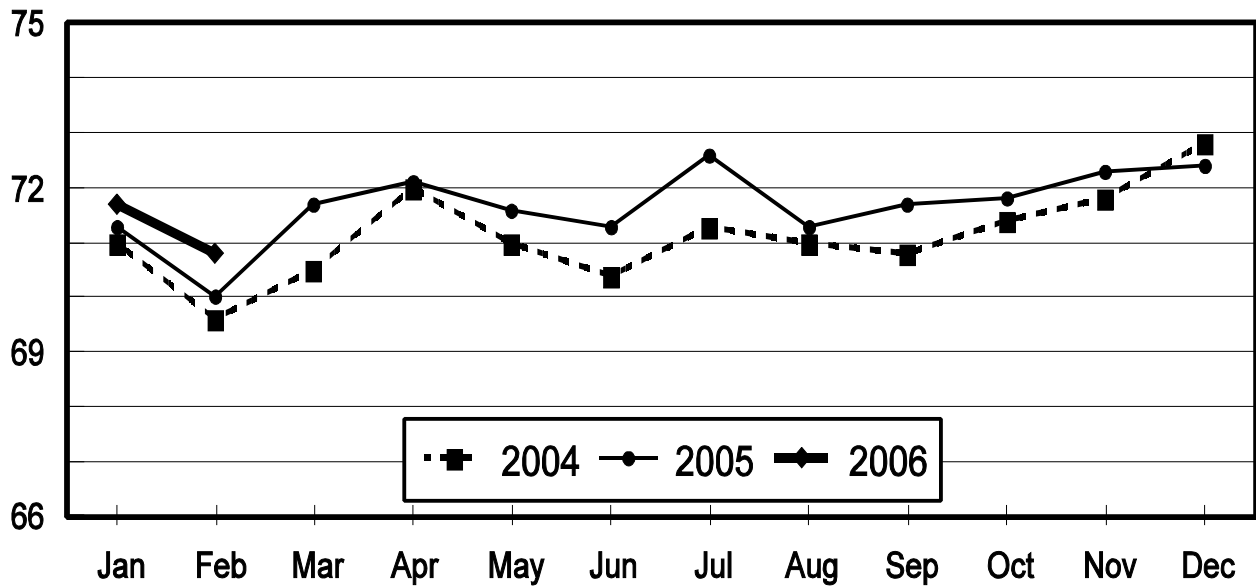


# All Layers: Rate of Lay

## United States, 2004 - 2006

### First of the Month

Eggs Per 100 Layers



**Layers and Eggs: Layers on Hand and Eggs Produced by Type,  
and Forced Molt, United States, December-January 2004-06<sup>1</sup>**

Item	Unit	2004	2005 <sup>2</sup>	2005 as % of 2004
Layers During Dec	1,000			
All Layers		345,618	348,545	101
Table Egg Type		287,115	290,620	101
Hatching Egg Type		58,503	57,925	99
Broiler-Type Hatching		55,869	55,210	99
Egg-Type Hatching		2,634	2,715	103
Eggs per 100 Layers During Dec	Number			
All Layers		2,234	2,235	100
Table Egg Type		2,311	2,306	100
Hatching Egg Type		1,856	1,878	101
Broiler-Type Hatching		1,831	1,853	101
Egg-Type Hatching		2,392	2,394	100
Eggs Produced During Dec	Million			
All Layers		7,721	7,791	101
Table Egg Type		6,636	6,703	101
Hatching Egg Type		1,086	1,088	100
Broiler-Type Hatching		1,023	1,023	100
Egg-Type Hatching		63	65	103
		2005	2006 <sup>2</sup>	2006 as % of 2005
Layers on Jan 1	1,000			
All Layers		347,273	349,142	101
Table Egg Type		288,300	290,767	101
Hatching Egg Type		58,973	58,375	99
Broiler-Type Hatching		56,237	55,635	99
Egg-Type Hatching		2,736	2,740	100
Eggs per 100 Layers on Jan 1	Number			
All Layers		71.3	71.7	101
Table Egg Type		73.6	73.9	100
Hatching Egg Type		59.7	60.7	102
Broiler-Type Hatching		58.8	60.0	102
Egg-Type Hatching		76.7	76.4	100
Forced Molt Layers on Jan 1	Percent			
Percent Being Molted		4.1	4.3	105
Percent with Molt Completed		23.2	23.0	99
Layers Sold for Slaughter During Dec	1,000	14,205	14,165	100
Layers Rendered, Died, Destroyed, Composted or Disappeared For Any Reason During Dec	1,000	5,760	5,453	95
Pullets on Jan 1	1,000	101,173	97,952	97
Pullets Added During Dec <sup>3</sup>	1,000	24,626	23,933	97

<sup>1</sup> Totals may not add due to rounding.

<sup>2</sup> Revised.

<sup>3</sup> Pullet chicks less than 3 days old added to pullet flocks.

**Layers and Eggs: Layers on Hand and Eggs Produced by Type,  
and Forced Molt, United States, January-February 2005-06 <sup>1</sup>**

Item	Unit	2005	2006	2006 as % of 2005
Layers During Jan	1,000			
All Layers		347,864	349,253	100
Table Egg Type		288,701	290,808	101
Hatching Egg Type		59,163	58,445	99
Broiler-Type Hatching		56,438	55,619	99
Egg-Type Hatching		2,725	2,826	104
Eggs per 100 Layers During Jan	Number			
All Layers		2,192	2,211	101
Table Egg Type		2,260	2,278	101
Hatching Egg Type		1,861	1,877	101
Broiler-Type Hatching		1,836	1,854	101
Egg-Type Hatching		2,385	2,335	98
Eggs Produced During Jan	Million			
All Layers		7,626	7,721	101
Table Egg Type		6,526	6,624	102
Hatching Egg Type		1,101	1,097	100
Broiler-Type Hatching		1,036	1,031	100
Egg-Type Hatching		65	66	102
Layers on Feb 1	1,000			
All Layers		348,412	349,321	100
Table Egg Type		289,082	290,827	101
Hatching Egg Type		59,330	58,494	99
Broiler-Type Hatching		56,632	55,592	98
Egg-Type Hatching		2,698	2,902	108
Eggs per 100 Layers on Feb 1	Number			
All Layers		70.0	70.8	101
Table Egg Type		72.0	72.9	101
Hatching Egg Type		60.3	60.1	100
Broiler-Type Hatching		59.5	59.4	100
Egg-Type Hatching		78.0	73.9	95
Forced Molt Layers on Feb 1	Percent			
Percent Being Molted		4.6	5.1	111
Percent with Molt Completed		21.7	23.4	108
Layers Sold for Slaughter During Jan	1,000	14,034	14,731	105
Layers Rendered, Died, Destroyed, Composted or Disappeared For Any Reason During Jan	1,000	6,632	5,864	88
Pullets on Feb 1	1,000	100,422	96,372	96
Pullets Added During Jan <sup>2</sup>	1,000	24,275	21,217	87

<sup>1</sup> Totals may not add due to rounding.

<sup>2</sup> Pullet chicks less than 3 days old added to pullet flocks.

**Layers and Eggs: Layers on Hand and Eggs Produced by State  
and United States, During December 2004-05**

State	Table Egg Layers in Flocks 30,000 and Above		All Layers <sup>1</sup>		Eggs per 100 for All Layers <sup>1</sup>	
	2004	2005 <sup>2</sup>	2004	2005 <sup>2</sup>	2004	2005 <sup>2</sup>
	<i>1,000</i>	<i>1,000</i>	<i>1,000</i>	<i>1,000</i>	<i>Number</i>	<i>Number</i>
AL	1,850	1,685	9,255	9,013	1,945	1,908
AR	4,794	4,280	15,291	14,559	1,962	1,985
CA	19,124	19,165	19,611	19,576	2,295	2,243
CO	3,442	3,349	3,986	3,889	2,333	2,417
CT	2,892	2,964	2,953	3,016	2,370	2,354
FL	10,216	11,012	10,677	11,481	2,313	2,291
GA	10,991	9,934	20,123	19,081	2,172	2,128
HI	473	465	512	479	1,973	1,837
IL	4,190	4,258	4,417	4,486	2,196	2,251
IN	22,756	23,836	23,501	24,523	2,281	2,308
IA	47,238	49,593	47,979	50,350	2,209	2,230
ME	3,881	3,914	3,943	3,990	2,308	2,381
MD	3,094	2,704	3,226	2,870	2,418	2,265
MI	7,231	8,010	7,482	8,260	2,326	2,349
MN	10,555	10,605	11,103	11,090	2,252	2,317
MS	1,706	1,671	6,959	6,704	1,940	1,984
MO	6,073	5,874	7,285	7,024	2,265	2,093
NE	11,925	11,853	12,000	11,928	2,267	2,222
NY	3,821	3,937	4,147	4,167	2,460	2,472
NC	3,370	3,333	10,934	10,970	1,994	2,015
OH	27,371	28,678	27,839	29,217	2,324	2,303
OR	2,672	2,598	2,861	2,771	2,342	2,454
PA	22,174	22,578	23,920	24,444	2,379	2,320
SC	4,263	3,856	5,332	4,999	2,307	2,260
SD	3,079	3,200	3,179	3,300	2,328	2,333
TX	13,841	14,271	18,257	18,669	2,295	2,314
VA	1,313	1,593	3,185	3,530	2,135	2,153
WA	4,832	4,867	4,897	4,932	2,348	2,271
WI	4,675	4,215	5,173	4,732	2,242	2,346
Oth Sts <sup>3</sup>	17,324	16,545	25,591	24,495	2,180	2,241
US	281,166	284,843	345,618	348,545	2,234	2,235

<sup>1</sup> Includes all layers and eggs produced in both table egg and hatching egg flocks regardless of size.

<sup>2</sup> Revised.

<sup>3</sup> Not published separately to avoid disclosing data for individual operations.



**Layers and Eggs: Layers on Hand and Eggs Produced by State  
and United States, During January 2005-06**

State	Table Egg Layers in Flocks 30,000 and Above		All Layers <sup>1</sup>		Eggs per 100 for All Layers <sup>1</sup>	
	2005	2006	2005	2006	2005	2006
	<i>1,000</i>	<i>1,000</i>	<i>1,000</i>	<i>1,000</i>	<i>Number</i>	<i>Number</i>
AL	1,872	1,658	9,255	8,946	1,945	1,923
AR	4,582	4,069	15,138	14,351	1,936	1,951
CA	19,119	18,930	19,611	19,393	2,239	2,207
CO	3,355	3,296	3,890	3,818	2,339	2,462
CT	2,889	2,904	2,952	2,958	2,439	2,299
FL	9,861	11,057	10,325	11,513	2,286	2,206
GA	11,020	9,923	20,365	19,197	2,121	2,094
HI	474	464	511	478	2,035	1,841
IL	4,302	4,284	4,527	4,516	1,988	2,192
IN	22,726	23,965	23,463	24,696	2,212	2,251
IA	48,999	50,350	49,771	51,125	2,176	2,249
ME	3,923	3,963	3,980	4,034	2,211	2,305
MD	3,081	2,729	3,184	2,870	2,324	2,195
MI	7,131	7,912	7,389	8,169	2,206	2,326
MN	10,398	10,734	10,946	11,199	2,275	2,250
MS	1,678	1,622	7,144	6,835	1,876	1,946
MO	6,110	5,937	7,362	7,071	2,200	2,121
NE	11,969	11,834	12,044	11,909	2,292	2,225
NY	3,777	3,859	4,106	4,089	2,435	2,470
NC	3,373	3,442	10,954	11,075	1,981	2,023
OH	27,531	29,109	28,017	29,651	2,252	2,266
OR	2,746	2,497	2,924	2,670	2,291	2,322
PA	22,733	22,302	24,484	24,255	2,336	2,354
SC	4,221	3,856	5,288	5,012	2,307	2,294
SD	3,075	3,195	3,175	3,295	2,331	2,307
TX	13,541	14,150	18,064	18,558	2,231	2,269
VA	1,241	1,592	3,124	3,528	2,049	2,041
WA	4,917	4,811	4,988	4,880	2,265	2,172
WI	4,625	4,213	5,132	4,729	2,260	2,305
Oth Sts <sup>2</sup>	17,491	16,369	25,751	24,433	2,159	2,186
US	282,760	285,026	347,864	349,253	2,192	2,211

<sup>1</sup> Includes all layers and eggs produced in both table egg and hatching egg flocks regardless of size.

<sup>2</sup> Not published separately to avoid disclosing data for individual operations.

**Egg Production: By Type, State, and United States,  
December 2004-05 <sup>1</sup>**

State	Total Production		Table Eggs <sup>2</sup>		Hatching Eggs <sup>2</sup>	
	2004	2005 <sup>3</sup>	2004	2005 <sup>3</sup>	2004	2005 <sup>3</sup>
	<i>Million Eggs</i>	<i>Million Eggs</i>	<i>Million Eggs</i>	<i>Million Eggs</i>	<i>Million Eggs</i>	<i>Million Eggs</i>
AL	180	172	43	40	137	132
AR	300	289	116	102	184	187
CA	450	439				
CO	93	94				
CT	70	71				
FL	247	263	240	254	7	9
GA	437	406	264	232	173	174
HI	10.1	8.8	10.1	8.8	0	0
IL	97	101	94	97	3	4
IN	536	566	523	554	13	12
IA	1,060	1,123				
ME	91	95				
MD	78	65	76	63	2	2
MI	174	194				
MN	250	257	242	248	8	9
MS	135	133	40	40	95	93
MO	165	147				
NE	272	265	272	265	0	0
NY	102	103				
NC	218	221	82	83	136	138
OH	647	673				
OR	67	68	65	66	2	2
PA	569	567	552	549	17	18
SC	123	113	104	93	19	20
SD	74	77	74	77	0	0
TX	419	432				
VA	68	76	34	40	34	36
WA	115	112				
WI	116	111				
Oth Sts <sup>4</sup>	558	549	434	426	125	123
US	7,721	7,791	6,636	6,703	1,086	1,088

<sup>1</sup> Totals may not add due to rounding.

<sup>2</sup> Data by type of flock not shown for some States to avoid disclosing individual operations, data included in US totals.

<sup>3</sup> Revised.

<sup>4</sup> Not published separately to avoid disclosing data for individual operations.

**Egg Production: By Type, State, and United States,  
January 2005-06 <sup>1</sup>**

State	Total Production		Table Eggs <sup>2</sup>		Hatching Eggs <sup>2</sup>	
	2005	2006	2005	2006	2005	2006
	<i>Million Eggs</i>	<i>Million Eggs</i>	<i>Million Eggs</i>	<i>Million Eggs</i>	<i>Million Eggs</i>	<i>Million Eggs</i>
AL	180	172	43	40	137	132
AR	293	280	107	96	186	184
CA	439	428				
CO	91	94				
CT	72	68				
FL	236	254	228	245	8	9
GA	432	402	254	225	178	177
HI	10.4	8.8	10.4	8.8	0	0
IL	90	99	87	95	3	4
IN	519	556	506	543	13	13
IA	1,083	1,150				
ME	88	93				
MD	74	63	73	61	1	2
MI	163	190				
MN	249	252	241	244	8	8
MS	134	133	38	38	96	95
MO	162	150				
NE	276	265	276	265	0	0
NY	100	101				
NC	217	224	80	84	137	140
OH	631	672				
OR	67	62	65	60	2	2
PA	572	571	555	550	17	21
SC	122	115	103	95	19	20
SD	74	76	74	76	0	0
TX	403	421				
VA	64	72	30	37	34	35
WA	113	106				
WI	116	109				
Oth Sts <sup>3</sup>	556	534	429	409	128	125
US	7,626	7,721	6,526	6,624	1,101	1,097

<sup>1</sup> Totals may not add due to rounding.

<sup>2</sup> Data by type of flock not shown for some States to avoid disclosing individual operations, data included in US totals.

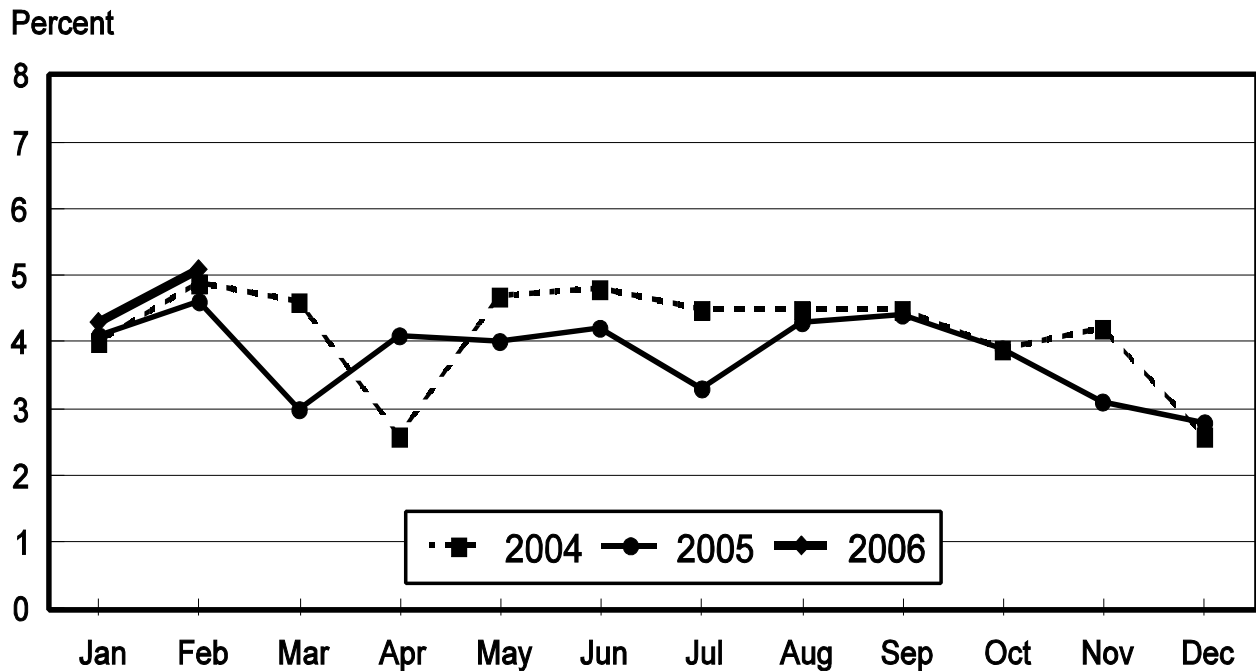
<sup>3</sup> Not published separately to avoid disclosing data for individual operations.

**Forced Molt: Percent of All Layers by Month,  
United States, 2005-06<sup>1</sup>**

Month	Percent Being Molted		Percent with Molt Completed	
	2005	2006	2005	2006
	<i>Percent</i>	<i>Percent</i>	<i>Percent</i>	<i>Percent</i>
Jan	4.1	4.3	23.2	23.0
Feb	4.6	5.1	21.7	23.4
Mar	3.0		22.8	
Apr	4.1		22.7	
May	4.0		22.4	
Jun	4.2		23.0	
Jul	3.3		22.6	
Aug	4.3		22.1	
Sep	4.4		22.4	
Oct	3.9		23.4	
Nov	3.1		24.3	
Dec	2.8		23.7	

<sup>1</sup> As of first of month.

**All Layers: Percent Being Molted  
United States, 2004 - 2006  
First of the Month**



**Forced Molt: Percent of All Layers by State  
and United States, February 2005-06 <sup>1</sup>**

State	Percent Being Molted		Percent with Molt Completed	
	2005	2006	2005	2006
	<i>Percent</i>	<i>Percent</i>	<i>Percent</i>	<i>Percent</i>
AL	1.0	0.5	5.0	7.0
AR	3.5	1.5	8.5	9.0
CA	6.0	10.0	34.0	31.0
CO	4.0	4.5	27.0	23.5
CT	0.0	8.0	10.0	11.5
FL	7.5	9.5	19.5	34.0
GA	2.5	6.0	17.0	11.5
HI	5.5	4.0	48.0	53.5
IL	5.5	7.0	30.0	31.0
IN	5.5	6.5	30.5	27.0
IA	4.0	5.0	29.0	35.0
ME	0.0	0.0	0.0	0.0
MD	2.5	7.5	32.5	30.0
MI	9.0	4.0	26.5	18.5
MN	2.5	5.0	26.5	28.5
MS	2.5	3.0	9.0	8.5
MO	5.5	4.0	16.0	21.0
NE	9.0	8.5	21.0	28.5
NY	1.5	8.5	5.0	7.5
NC	1.5	1.0	6.5	7.5
OH	7.0	4.5	23.0	19.0
OR	6.5	9.5	24.0	32.5
PA	5.0	2.0	14.5	20.5
SC	2.5	4.5	27.0	27.5
SD	10.0	4.0	28.0	19.0
TX	4.0	5.5	16.5	22.0
VA	3.5	5.5	11.0	14.0
WA	8.0	12.0	37.5	41.0
WI	3.5	2.0	28.5	35.0
Oth Sts <sup>2</sup>	4.5	4.7	24.1	25.2
US	4.6	5.1	21.7	23.4

<sup>1</sup> As of first of month.

<sup>2</sup> Not published separately to avoid disclosing data for individual operations.

**Hatchery Production: Eggs in Incubators, Chicks Hatched,  
and Placements by Type, United States, January-February 2005-06**

Item	2005	2006	2006 as % of 2005
	<i>1,000</i>	<i>1,000</i>	<i>Percent</i>
<b>Egg-Type</b>			
Eggs in Incubators on Feb 1	34,202	33,497	98
Chicks Hatched During Jan	37,936	35,422	93
Pullets Hatched During Jan for Intended Placements in Hatchery Supply Flocks 7-18 Months Earlier <sup>1</sup>	157 3,088	188 2,834	120 92
<b>Broiler-Type</b>			
Eggs in Incubators on Feb 1	654,044	660,973	101
Chicks Hatched During Jan	796,026	804,073	101
Pullets Hatched During Jan for Intended Placements in Hatchery Supply Flocks 7-15 Months Earlier <sup>2</sup>	6,409 62,084	6,825 62,860	106 101

<sup>1</sup> 2006 includes pullet chicks hatched Jul 2004 through Jun 2005.

<sup>2</sup> 2006 includes pullet chicks hatched Oct 2004 through Jun 2005.

**Egg-Type Eggs in Incubators: By Region and United States,  
February 1, 2005-06**

Region	2005	2006	2006 as % of 2004
	<i>1,000</i>	<i>1,000</i>	<i>Percent</i>
North Atlantic	5,273	5,920	112
E North Central	6,981	6,035	86
W North Central	5,449	7,535	138
South Atlantic	4,644	3,816	82
South Central	6,504	5,957	92
West	5,351	4,234	79
US	34,202	33,497	98

**Regions:**

North Atlantic = CT, ME, MA, NH, NJ, NY, PA, RI, VT.

E North Central = IL, IN, MI, OH, WI.

W North Central = IA, KS, MN, MO, NE, ND, SD.

South Atlantic = DE, FL, GA, MD, NC, SC, VA, WV.

South Central = AL, AR, KY, LA, MS, OK, TN, TX.

West = AK, AZ, CA, CO, HI, ID, MT, NM, NV, OR, UT, WA, WY.

**Egg-Type Chicks Hatched: By State and United States,  
January 2005-06**

State	During January			Jan-Jan		
	2005	2006	2006 as % of 2005	2005	2006	2006 as % of 2005
	<i>1,000</i>	<i>1,000</i>	<i>Percent</i>	<i>1,000</i>	<i>1,000</i>	<i>Percent</i>
FL	908	721	79	908	721	79
GA	2,327	2,389	103	2,327	2,389	103
IN	5,538	5,196	94	5,538	5,196	94
IA	5,832	6,586	113	5,832	6,586	113
MN	818	947	116	818	947	116
PA	5,818	4,231	73	5,818	4,231	73
Oth Sts <sup>1</sup>	16,695	15,352	92	16,695	15,352	92
US	37,936	35,422	93	37,936	35,422	93

<sup>1</sup> Not published separately to avoid disclosing data for individual operations.

**Egg-Type Chicks Hatched: By Month, United States, 2004-06**

Month	By Months				Cumulative			
	2004	2005	2006	2006 as % of 2005	2004	2005	2006	2006 as % of 2005
	<i>1,000</i>	<i>1,000</i>	<i>1,000</i>	<i>Percent</i>	<i>1,000</i>	<i>1,000</i>	<i>1,000</i>	<i>Percent</i>
Jan	35,155	37,936	35,422	93	35,155	37,936	35,422	93
Feb	31,923	33,932			67,078	71,868		
Mar	37,545	41,824			104,623	113,692		
Apr	37,466	38,267			142,089	151,959		
May	38,347	37,449			180,436	189,408		
Jun	37,508	34,537			217,944	223,945		
Jul	34,919	35,310			252,863	259,255		
Aug	36,854	38,953			289,717	298,208		
Sep	36,631	33,788			326,348	331,996		
Oct	34,866	35,367			361,214	367,363		
Nov	38,758	32,752			399,972	400,115		
Dec	37,332	36,224			437,304	436,339		

**Intended Placements: Egg-Type Pullet Chicks for Hatchery Supply  
Flocks by Month and Total, United States, 2004-06 <sup>1</sup>**

Month	Pullet Chicks Hatched			2006 as % of 2005	Cumulative Potential Placements Relative to Current Supply Flocks 7-18 Months Earlier <sup>2</sup>		
	2004	2005	2006		2004	2005	2006
	<i>1,000</i>	<i>1,000</i>	<i>1,000</i>	<i>Percent</i>	<i>1,000</i>	<i>1,000</i>	<i>1,000</i>
Jan	124	157	188	120	3,012	3,088	2,834
Feb	285	208			2,960	3,080	2,854
Mar	401	314			2,927	3,210	2,797
Apr	343	308			2,923	3,142	2,967
May	157	190			3,047	3,100	2,888
Jun	212	184			3,139	3,006	2,844
Jul	222	242			3,198	2,995	2,857
Aug	318	261			3,112	3,028	2,888
Sep	205	375			3,172	2,951	
Oct	268	189			3,254	2,864	
Nov	225	181			3,317	2,829	
Dec	235	248			3,185	2,862	
Total	2,995	2,857					

<sup>1</sup> Reported by leading breeders. Coverage may not be 100 percent. Includes expected pullet chicks from eggs sold during the preceding month at the rate of 125 pullet chicks per 30 dozen case of eggs.

<sup>2</sup> For January 2006, includes breeder pullet chicks hatched Jul 2004 through Jun 2005. The 7-18 months represent the first laying cycle. Molting and additional laying cycles will increase the cumulative potential placements.

**Broiler-Type Eggs in Incubators: By Region  
and United States, February 1, 2005-06**

Region	2005	2006	2006 as % of 2005
	<i>1,000</i>	<i>1,000</i>	<i>Percent</i>
North Atlantic	11,898	11,759	99
E North Central	8,699	8,898	102
W North Central	23,200	23,307	100
South Atlantic	236,272	241,995	102
South Central	348,833	351,930	101
West	25,142	23,084	92
US	654,044	660,973	101



**Broiler-Type Chicks Hatched: By State  
and United States, January 2005-06**

State	During January			Jan-Jan		
	2005	2006	2006 as % of 2005	2005	2006	2006 as % of 2005
	<i>1,000</i>	<i>1,000</i>	<i>Percent</i>	<i>1,000</i>	<i>1,000</i>	<i>Percent</i>
AL	109,263	114,204	105	109,263	114,204	105
AR	114,494	115,133	101	114,494	115,133	101
DE	14,702	15,095	103	14,702	15,095	103
FL	4,854	4,964	102	4,854	4,964	102
GA	123,719	123,833	100	123,719	123,833	100
KY	25,499	25,549	100	25,499	25,549	100
LA	14,661	14,959	102	14,661	14,959	102
MD	31,788	32,498	102	31,788	32,498	102
MS	72,503	69,102	95	72,503	69,102	95
NC	66,311	68,670	104	66,311	68,670	104
OK	23,595	23,564	100	23,595	23,564	100
PA	14,168	13,942	98	14,168	13,942	98
SC	17,293	18,570	107	17,293	18,570	107
TX	54,510	56,761	104	54,510	56,761	104
VA	23,587	23,548	100	23,587	23,548	100
CA, MO, TN, & WV	65,033	63,433	98	65,033	63,433	98
19 Sts <sup>1</sup>	775,980	783,825	101	775,980	783,825	101
Oth Sts <sup>2</sup>	20,046	20,248	101	20,046	20,248	101
US	796,026	804,073	101	796,026	804,073	101

<sup>1</sup> States in the weekly hatchery production estimating program.

<sup>2</sup> Not published separately to avoid disclosing data for individual operations.

**Broiler-Type Chicks Hatched: By Month, United States, 2004-06**

Month	By Months				Cumulative			
	2004	2005	2006	2006 as % of 2005	2004	2005	2006	2006 as % of 2005
	<i>1,000</i>	<i>1,000</i>	<i>1,000</i>	<i>Percent</i>	<i>1,000</i>	<i>1,000</i>	<i>1,000</i>	<i>Percent</i>
Jan	774,004	796,026	804,073	101	774,004	796,026	804,073	101
Feb	728,401	731,274			1,502,405	1,527,300		
Mar	791,915	815,782			2,294,320	2,343,082		
Apr	774,629	789,780			3,068,949	3,132,862		
May	810,484	823,406			3,879,433	3,956,268		
Jun	786,603	796,001			4,666,036	4,752,269		
Jul	806,658	807,654			5,472,694	5,559,923		
Aug	810,285	811,678			6,282,979	6,371,601		
Sep	769,934	769,771			7,052,913	7,141,372		
Oct	756,895	776,333			7,809,808	7,917,705		
Nov	730,353	747,335			8,540,161	8,665,040		
Dec	793,090	807,848			9,333,251	9,472,888		

**Intended Placements: Broiler-Type Pullet Chicks for Hatchery  
Supply Flocks by Month and Total, 2004-06 <sup>1</sup>**

Month	Pullet Chicks Hatched			2006 as % of 2005	Cumulative Potential Placements Relative to Current Supply Flocks 7-15 Months Earlier <sup>2</sup>		
	2004	2005	2006		2004	2005	2006
	<i>1,000</i>	<i>1,000</i>	<i>1,000</i>	<i>Percent</i>	<i>1,000</i>	<i>1,000</i>	<i>1,000</i>
US Place- ments							
Jan	6,811	6,409	6,825	106	60,300	62,084	62,860
Feb	7,340	7,325			61,106	62,460	63,060
Mar	6,815	7,077			61,421	62,794	63,416
Apr	6,402	6,800			61,600	63,574	63,776
May	7,590	7,783			61,643	63,220	64,311
Jun	6,890	7,109			61,930	63,008	64,284
Jul	6,688	6,657			62,020	62,965	64,319
Aug	7,280	7,484			62,096	62,972	64,344
Sep	7,758	7,132			62,113	62,707	
Oct	6,457	6,944			62,180	62,894	
Nov	7,128	7,298			61,511	63,006	
Dec	6,772	7,112			61,848	63,509	
Annual Total	83,931	85,130					
Total Place- ments <sup>3</sup>							
Jan	7,812	7,804	8,018	103			
Feb	8,251	8,664					
Mar	7,801	8,709					
Apr	7,288	7,995					
May	8,693	8,995					
Jun	8,590	8,571					
Jul	8,003	7,846					
Aug	8,416	9,084					
Sep	9,184	8,683					
Oct	7,678	8,683					
Nov	8,411	8,830					
Dec	8,263	8,256					
Annual Total	98,390	102,120					

<sup>1</sup> Reported by leading breeders. Coverage may not be 100 percent. Includes expected pullet chicks from eggs sold during the preceding month at the rate of 125 pullet chicks per 30 dozen case of eggs.

<sup>2</sup> For Jan 2006, includes breeder pullet chicks hatched Oct 2004 through Jun 2005.

<sup>3</sup> U.S. production of intended placements worldwide.

## Procedures and Reliability

**Data Sources:** Primary data for the "**Chickens and Eggs**" report are from weekly and/or monthly questionnaires sent to producers. An attempt is made to collect information for layer and egg estimates from each known contractor and independent producer who has at least 30,000 table egg layers, flocks of hatchery supply layers, or pullet only operations with at least 500 pullets. Coverage for operations with less than 30,000 table egg layers are estimated each month based on data reported in December. Approximately 900 contractors, independent egg producers, and pullet only operations are contacted each month. All known hatcheries, approximately 330, are contacted for information on a weekly and/or monthly basis.

**Revisions:** The previous month's estimates are subject to revision if late reports or corrected data indicates a different level. Additionally, revisions after the monthly report will be made at the end of the marketing year and published in the annual reports of "**Chickens and Eggs Summary**" and "**Hatchery Production**".

**Procedures and Reliability:** Operations are mailed a questionnaire and given adequate time to respond by mail. Those that do not respond are phoned. Great care is exercised to ensure that all operations are accounted for during each survey period. However, there are usually missing reports that must be accounted for in the estimates.

Sound statistical methodology is employed to derive estimates from the reported data. All data are checked for unusual values. All operations' data are compared to their own past operating profiles and also to trends from other operations. Data for missing operations are estimated based on similar operations or historical data. Survey data are subject to non-sampling errors such as omissions and mistakes in reporting and in processing. While these errors cannot be measured directly, they are minimized by reviewing all data for consistency and reasonableness.

Egg-type chicks hatched consist of all chicks of egg-type domesticated breeds including males and chicks destined for hatchery supply flocks and research purposes. The relationship of chicks hatched to chicken inventory and poultry marketings is carefully monitored. The disposition of egg-type chicks hatched prior to placement into the laying flock can vary significantly, which can make comparisons to changes in layer inventory inconsistent over time.

Intended placement data reported by leading breeders include pullet chicks expected from eggs sold the preceding month. The breeders in this report account for a large percentage of replacement pullets for hatchery supply flocks. Production of replacement pullets by these breeders indicates the number of pullets available to hatchery supply flocks several months before the pullets will actually move into the flocks. "Hatchery Supply Flocks" include all generations of layers which could lay eggs to supply a hatchery. This includes the generations of parents, grandparents, great-grandparents, pedigree, etc. Also included are research flocks, vaccine flocks, and specific pathogen-free flocks. The broiler cumulative potential placements are a moving total of the intended placements 7-15 months earlier. The egg-type cumulative potential placements of 7-18 months represent the first laying cycle. Molting and additional laying cycles will increase the cumulative potential placements of egg-type hatching flocks.

## ACCESS TO REPORTS!!

---

For your convenience, there are several ways to obtain NASS reports, data products, and services:

### INTERNET ACCESS

All NASS reports are available free of charge on the worldwide Internet. For access, connect to the Internet and go to the NASS Home Page at: [www.nass.usda.gov](http://www.nass.usda.gov).

### E-MAIL SUBSCRIPTION

All NASS reports are available by subscription free of charge direct to your e-mail address. Starting with the NASS Home Page at [www.nass.usda.gov](http://www.nass.usda.gov), under the right navigation, *Receive reports by Email*, click on **National** or **State**. Follow the instructions on the screen.

-----

### PRINTED REPORTS OR DATA PRODUCTS

**CALL OUR TOLL-FREE ORDER DESK: 800-999-6779 (U.S. and Canada)**  
**Other areas, please call 703-605-6220      FAX: 703-605-6900**  
**(Visa, MasterCard, check, or money order acceptable for payment.)**

-----

### ASSISTANCE

For **assistance** with general agricultural statistics or further information about NASS or its products or services, contact the **Agricultural Statistics Hotline** at **800-727-9540**, 7:30 a.m. to 4:00 p.m. ET, or e-mail: [nass@nass.usda.gov](mailto:nass@nass.usda.gov).

The U.S. Department of Agriculture (USDA) prohibits discrimination in all its programs and activities on the basis of race, color, national origin, age, disability, and where applicable, sex, marital status, familial status, parental status, religion, sexual orientation, genetic information, political beliefs, reprisal, or because all or part of an individual's income is derived from any public assistance program. (Not all prohibited bases apply to all programs.) Persons with disabilities who require alternative means for communication of program information (Braille, large print, audiotape, etc.) should contact USDA's TARGET Center at (202) 720-2600 (voice and TDD).

To file a complaint of discrimination, write to USDA, Director, Office of Civil Rights, 1400 Independence Avenue, S.W., Washington, D.C. 20250-9410, or call (800) 795-3272 (voice) or (202) 720-6382 (TDD). USDA is an equal opportunity provider and employer.