



NASS

FACT FINDERS FOR AGRICULTURE
UNITED STATES DEPARTMENT OF AGRICULTURE

Washington, D.C.

Chickens And Eggs

Released March 24, 2006, by the National Agricultural Statistics Service (NASS), Agricultural Statistics Board, U.S. Department of Agriculture. For information on "Layers and Eggs" call Sharyn Lavender at (202) 720-3244, for "Chicks Hatched" call Jody Roberts at (202) 690-8632, office hours 7:30 a.m. to 4:00 p.m. ET.

February Egg Production Up 1 Percent

U.S. egg production totaled 6.97 billion during February 2006, up 1 percent from last year. Production included 5.99 billion table eggs, and 989 million hatching eggs, of which 927 million were broiler-type and 62 million were egg-type. The number of layers during February 2006 averaged 350 million, up slightly from a year earlier. February egg production per 100 layers was 1,995 eggs, also up slightly from February 2005.

All layers in the U.S. on March 1, 2006, totaled 350 million, up slightly from a year ago. The 350 million layers consisted of 291 million layers producing table-type eggs, 56 million layers producing broiler-type hatching eggs, and 2.91 million layers producing egg-type hatching eggs. Rate of lay per day on March 1, 2006, averaged 71.6 eggs per 100 layers, down slightly from March 1, 2005.

Egg-Type Chicks Hatched Down 1 Percent

Egg-type chicks hatched during February 2006 totaled 33.7 million, down 1 percent from February 2005. Eggs in incubators totaled 36.5 million on March 1, 2006 down 1 percent from a year ago.

Domestic placements of egg-type pullet chicks for future hatchery supply flocks by leading breeders totaled 196,000 during February 2006, down 6 percent from February 2005.

Broiler-Type Chicks Hatched Up Slightly

Broiler-type chicks hatched during February 2006 totaled 733 million, up slightly from February 2005. Eggs in incubators totaled 666 million on March 1, 2006, up 1 percent from a year earlier.

Leading breeders placed 7.59 million broiler-type pullet chicks for future domestic hatchery supply flocks during February 2006, up 4 percent from February 2005.

Contents

Page

U.S. Average Number of Layers on Hand and Egg Production	1
U.S. Layers on Hand and Eggs Produced by Type, Forced Molt, and Pullets	3
Layers on Hand and Eggs Produced by State	5
Egg Production by Type and State	7
Forced Molt	9
Egg-Type Hatchery	11
Egg-Type Intended Placements	13
Broiler-Type Hatchery	13
Broiler-Type Intended Placements	15
Procedures and Reliability	16

**All Layers: Average Number on Hand During the Month,
United States, 2004-06**

Month	2004	2005	2006
	<i>1,000 Layers</i>	<i>1,000 Layers</i>	<i>1,000 Layers</i>
Dec ¹	339,305	345,618	348,545
Jan	337,948	347,864	349,246
Feb	338,905	348,791	349,653
Mar	340,699	346,959	
Apr	341,550	343,574	
May	341,562	341,819	
Jun	342,513	339,856	
Jul	343,180	338,573	
Aug	343,653	339,351	
Sep	344,452	340,914	
Oct	345,075	342,823	
Nov	344,633	345,874	

¹ December preceding year.

**Eggs: Production During the Month by Type,
United States, 2005-06 ¹**

Month	Total Eggs		Table Eggs		Hatching Eggs	
	2005	2006	2005	2006	2005	2006
	<i>Million Eggs</i>	<i>Million Eggs</i>	<i>Million Eggs</i>	<i>Million Eggs</i>	<i>Million Eggs</i>	<i>Million Eggs</i>
Dec ²	7,721	7,791	6,636	6,703	1,086	1,088
Jan	7,626	7,721	6,526	6,624	1,101	1,097
Feb	6,928	6,974	5,915	5,985	1,014	989
Mar	7,738		6,610		1,129	
Apr	7,407		6,311		1,097	
May	7,572		6,439		1,133	
Jun	7,346		6,250		1,096	
Jul	7,563		6,444		1,120	
Aug	7,528		6,425		1,104	
Sep	7,348		6,279		1,070	
Oct	7,665		6,561		1,104	
Nov	7,514		6,459		1,055	
During Year	89,960		76,859		13,103	

¹ Totals may not add due to rounding.

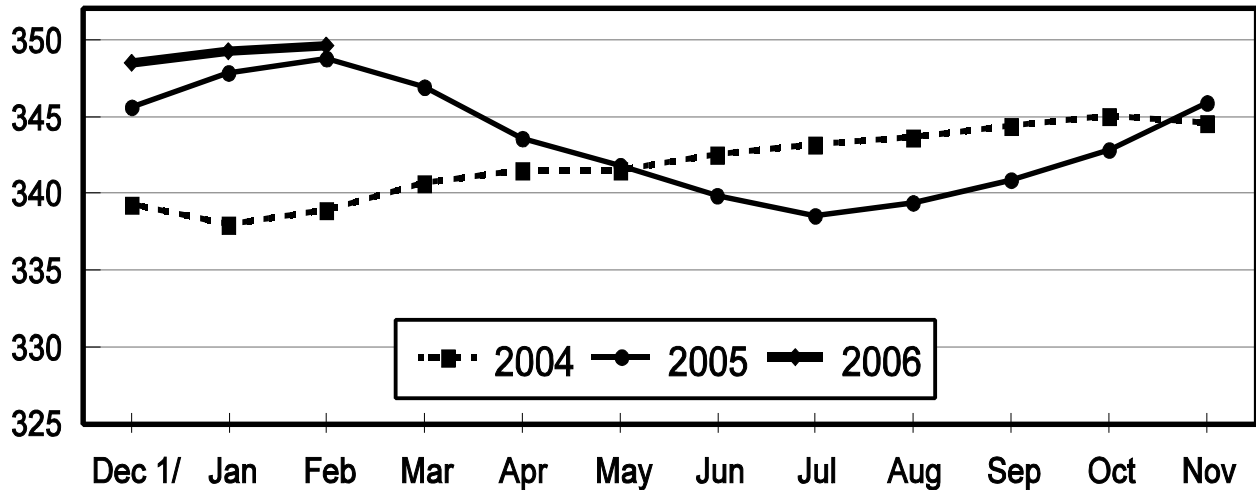
² December preceding year.

Average Number of Layers

United States, 2004 - 2006

During the Month

Million Layers



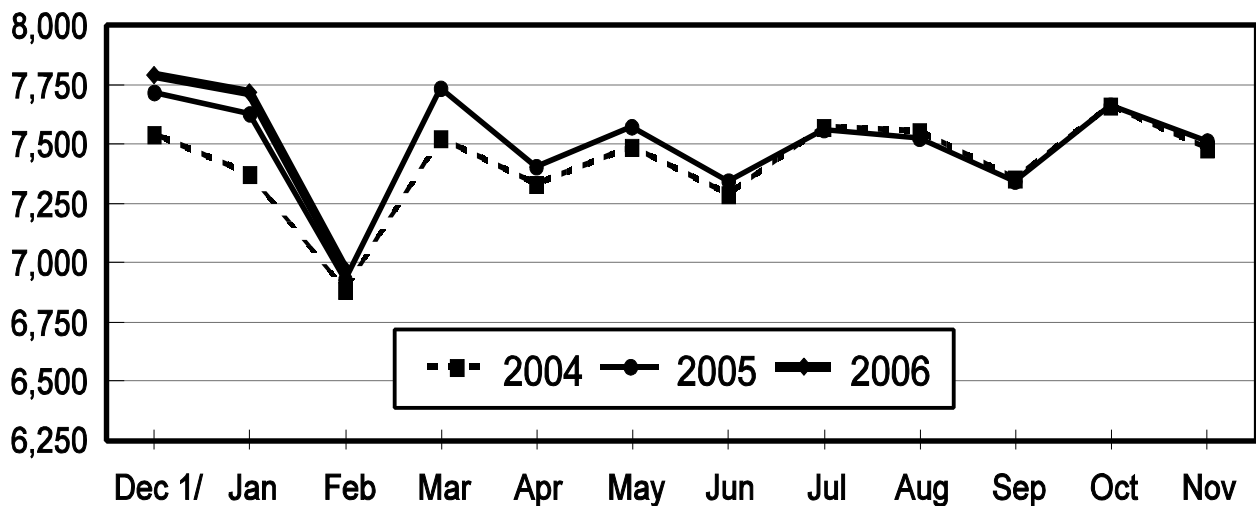
1/ Previous Year

All Egg Production

United States, 2004 - 2006

During the Month

Million Eggs



1/ Previous Year

**Layers and Eggs: Layers on Hand and Eggs Produced by Type,
and Forced Molt, United States, January-February 2005-06¹**

Item	Unit	2005	2006 ²	2006 as % of 2005
Layers During Jan	1,000			
All Layers		347,864	349,246	100
Table Egg Type		288,701	290,808	101
Hatching Egg Type		59,163	58,438	99
Broiler-Type Hatching		56,438	55,605	99
Egg-Type Hatching		2,725	2,833	104
Eggs per 100 Layers During Jan	Number			
All Layers		2,192	2,211	101
Table Egg Type		2,260	2,278	101
Hatching Egg Type		1,861	1,877	101
Broiler-Type Hatching		1,836	1,854	101
Egg-Type Hatching		2,385	2,330	98
Eggs Produced During Jan	Million			
All Layers		7,626	7,721	101
Table Egg Type		6,526	6,624	102
Hatching Egg Type		1,101	1,097	100
Broiler-Type Hatching		1,036	1,031	100
Egg-Type Hatching		65	66	102
Layers on Feb 1	1,000			
All Layers		348,412	349,308	100
Table Egg Type		289,082	290,827	101
Hatching Egg Type		59,330	58,481	99
Broiler-Type Hatching		56,632	55,565	98
Egg-Type Hatching		2,698	2,916	108
Eggs per 100 Layers on Feb 1	Number			
All Layers		70.0	70.8	101
Table Egg Type		72.0	72.9	101
Hatching Egg Type		60.3	60.1	100
Broiler-Type Hatching		59.5	59.4	100
Egg-Type Hatching		78.0	73.9	95
Forced Molt Layers on Feb 1	Percent			
Percent Being Molted		4.6	5.2	113
Percent with Molt Completed		21.7	23.8	110
Layers Sold for Slaughter During Jan	1,000	14,034	14,758	105
Layers Rendered, Died, Destroyed, Composted or Disappeared For Any Reason During Jan	1,000	6,632	5,927	89
Pullets on Feb 1	1,000	100,422	97,857	97
Pullets Added During Jan ³	1,000	24,275	21,448	88

¹ Totals may not add due to rounding.

² Revised.

³ Pullet chicks less than 3 days old added to pullet flocks.

**Layers and Eggs: Layers on Hand and Eggs Produced by Type,
and Forced Molt, United States, February-March 2005-06 ¹**

Item	Unit	2005	2006	2006 as % of 2005
Layers During Feb	1,000			
All Layers		348,791	349,653	100
Table Egg Type		289,216	290,940	101
Hatching Egg Type		59,575	58,713	99
Broiler-Type Hatching		56,890	55,798	98
Egg-Type Hatching		2,685	2,915	109
Eggs per 100 Layers During Feb	Number			
All Layers		1,986	1,995	100
Table Egg Type		2,045	2,057	101
Hatching Egg Type		1,702	1,684	99
Broiler-Type Hatching		1,679	1,661	99
Egg-Type Hatching		2,197	2,127	97
Eggs Produced During Feb	Million			
All Layers		6,928	6,974	101
Table Egg Type		5,915	5,985	101
Hatching Egg Type		1,014	989	98
Broiler-Type Hatching		955	927	97
Egg-Type Hatching		59	62	105
Layers on Mar 1	1,000			
All Layers		349,117	349,963	100
Table Egg Type		289,322	291,035	101
Hatching Egg Type		59,795	58,928	99
Broiler-Type Hatching		57,133	56,022	98
Egg-Type Hatching		2,662	2,906	109
Eggs per 100 Layers on Mar 1	Number			
All Layers		71.7	71.6	100
Table Egg Type		74.0	73.9	100
Hatching Egg Type		60.5	60.2	100
Broiler-Type Hatching		59.8	59.4	99
Egg-Type Hatching		77.4	76.3	99
Forced Molt Layers on Mar 1	Percent			
Percent Being Molted		3.0	4.0	133
Percent with Molt Completed		22.8	23.5	103
Layers Sold for Slaughter During Feb	1,000	14,355	13,439	94
Layers Rendered, Died, Destroyed, Composted or Disappeared For Any Reason During Feb	1,000	7,232	7,988	110
Pullets on Mar 1	1,000	100,738	96,977	96
Pullets Added During Feb ²	1,000	23,776	23,432	99

¹ Totals may not add due to rounding.

² Pullet chicks less than 3 days old added to pullet flocks.

**Layers and Eggs: Layers on Hand and Eggs Produced by State
and United States, During January 2005-06**

State	Table Egg Layers in Flocks 30,000 and Above		All Layers ¹		Eggs per 100 for All Layers ¹	
	2005	2006 ²	2005	2006 ²	2005	2006 ²
	<i>1,000</i>	<i>1,000</i>	<i>1,000</i>	<i>1,000</i>	<i>Number</i>	<i>Number</i>
AL	1,872	1,658	9,255	8,946	1,945	1,923
AR	4,582	4,069	15,138	14,337	1,936	1,953
CA	19,119	18,930	19,611	19,393	2,239	2,207
CO	3,355	3,296	3,890	3,818	2,339	2,462
CT	2,889	2,904	2,952	2,958	2,439	2,299
FL	9,861	11,057	10,325	11,513	2,286	2,206
GA	11,020	9,923	20,365	19,197	2,121	2,094
HI	474	464	511	478	2,035	1,841
IL	4,302	4,284	4,527	4,516	1,988	2,192
IN	22,726	23,965	23,463	24,696	2,212	2,251
IA	48,999	50,350	49,771	51,125	2,176	2,249
ME	3,923	3,963	3,980	4,034	2,211	2,305
MD	3,081	2,729	3,184	2,870	2,324	2,195
MI	7,131	7,912	7,389	8,169	2,206	2,326
MN	10,398	10,734	10,946	11,199	2,275	2,250
MS	1,678	1,622	7,144	6,835	1,876	1,946
MO	6,110	5,937	7,362	7,071	2,200	2,121
NE	11,969	11,834	12,044	11,909	2,292	2,225
NY	3,777	3,859	4,106	4,096	2,435	2,466
NC	3,373	3,442	10,954	11,075	1,981	2,023
OH	27,531	29,109	28,017	29,651	2,252	2,266
OR	2,746	2,497	2,924	2,670	2,291	2,322
PA	22,733	22,302	24,484	24,255	2,336	2,354
SC	4,221	3,856	5,288	5,012	2,307	2,294
SD	3,075	3,195	3,175	3,295	2,331	2,307
TX	13,541	14,150	18,064	18,558	2,231	2,269
VA	1,241	1,592	3,124	3,528	2,049	2,041
WA	4,917	4,811	4,988	4,880	2,265	2,172
WI	4,625	4,213	5,132	4,729	2,260	2,305
Oth Sts ³	17,491	16,369	25,751	24,433	2,159	2,186
US	282,760	285,026	347,864	349,246	2,192	2,211

¹ Includes all layers and eggs produced in both table egg and hatching egg flocks regardless of size.

² Revised.

³ Not published separately to avoid disclosing data for individual operations.

**Layers and Eggs: Layers on Hand and Eggs Produced by State
and United States, During February 2005-06**

State	Table Egg Layers in Flocks 30,000 and Above		All Layers ¹		Eggs per 100 for All Layers ¹	
	2005	2006	2005	2006	2005	2006
	<i>1,000</i>	<i>1,000</i>	<i>1,000</i>	<i>1,000</i>	<i>Number</i>	<i>Number</i>
AL	1,868	1,696	9,232	8,897	1,787	1,765
AR	4,418	4,125	15,099	14,512	1,729	1,723
CA	19,157	18,881	19,655	19,377	2,020	1,977
CO	3,278	3,245	3,813	3,731	2,151	2,198
CT	2,936	2,906	3,001	2,960	2,199	2,196
FL	9,960	10,959	10,465	11,406	2,121	2,016
GA	11,204	9,785	20,628	19,063	1,895	1,915
HI	464	462	500	475	1,880	1,663
IL	4,226	4,246	4,456	4,474	1,997	2,168
IN	22,814	24,303	23,545	25,043	2,005	2,009
IA	49,082	50,795	49,860	51,600	2,006	2,054
ME	4,055	4,026	4,113	4,095	1,629	2,076
MD	2,981	2,684	3,088	2,804	2,073	1,997
MI	7,606	8,116	7,869	8,380	2,033	2,112
MN	10,488	10,899	11,023	11,364	2,087	2,006
MS	1,611	1,610	7,132	6,839	1,753	1,740
MO	6,124	6,132	7,415	7,279	1,996	1,965
NE	12,018	11,752	12,093	11,827	2,018	2,088
NY	3,852	3,820	4,177	4,060	2,179	2,167
NC	3,339	3,402	10,948	11,073	1,790	1,797
OH	27,641	29,039	28,129	29,570	1,984	2,002
OR	2,677	2,593	2,843	2,766	2,040	2,061
PA	22,713	21,719	24,455	23,667	2,135	2,151
SC	4,041	3,893	5,138	5,075	2,044	1,990
SD	3,027	3,188	3,127	3,288	2,111	2,068
TX	13,626	14,160	18,142	18,651	2,006	2,000
VA	1,200	1,545	3,107	3,444	1,770	1,800
WA	4,928	4,722	4,997	4,790	2,201	2,004
WI	4,537	4,315	5,050	4,845	2,099	2,043
Oth Sts ²	17,405	16,151	25,691	24,298	1,966	1,955
US	283,276	285,169	348,791	349,653	1,986	1,995

¹ Includes all layers and eggs produced in both table egg and hatching egg flocks regardless of size.

² Not published separately to avoid disclosing data for individual operations.

**Egg Production: By Type, State, and United States,
January 2005-06 ¹**

State	Total Production		Table Eggs ²		Hatching Eggs ²	
	2005	2006 ³	2005	2006 ³	2005	2006 ³
	<i>Million Eggs</i>	<i>Million Eggs</i>	<i>Million Eggs</i>	<i>Million Eggs</i>	<i>Million Eggs</i>	<i>Million Eggs</i>
AL	180	172	43	40	137	132
AR	293	280	107	96	186	184
CA	439	428				
CO	91	94				
CT	72	68				
FL	236	254	228	245	8	9
GA	432	402	254	225	178	177
HI	10.4	8.8	10.4	8.8	0	0
IL	90	99	87	95	3	4
IN	519	556	506	543	13	13
IA	1,083	1,150				
ME	88	93				
MD	74	63	73	61	1	2
MI	163	190				
MN	249	252	241	244	8	8
MS	134	133	38	38	96	95
MO	162	150				
NE	276	265	276	265	0	0
NY	100	101				
NC	217	224	80	84	137	140
OH	631	672				
OR	67	62	65	60	2	2
PA	572	571	555	550	17	21
SC	122	115	103	95	19	20
SD	74	76	74	76	0	0
TX	403	421				
VA	64	72	30	37	34	35
WA	113	106				
WI	116	109				
Oth Sts ⁴	556	534	429	409	128	125
US	7,626	7,721	6,526	6,624	1,101	1,097

¹ Totals may not add due to rounding.

² Data by type of flock not shown for some States to avoid disclosing individual operations, data included in US totals.

³ Revised.

⁴ Not published separately to avoid disclosing data for individual operations.

**Egg Production: By Type, State, and United States,
February 2005-06 ¹**

State	Total Production		Table Eggs ²		Hatching Eggs ²	
	2005	2006	2005	2006	2005	2006
	<i>Million Eggs</i>	<i>Million Eggs</i>	<i>Million Eggs</i>	<i>Million Eggs</i>	<i>Million Eggs</i>	<i>Million Eggs</i>
AL	165	157	40	38	125	119
AR	261	250	90	86	171	164
CA	397	383				
CO	82	82				
CT	66	65				
FL	222	230	214	222	8	8
GA	391	365	228	204	163	161
HI	9.4	7.9	9.4	7.9	0	0
IL	89	97	86	94	3	3
IN	472	503	461	491	11	12
IA	1,000	1,060				
ME	67	85				
MD	64	56	63	55	1	1
MI	160	177				
MN	230	228	223	221	7	7
MS	125	119	34	34	91	85
MO	148	143				
NE	244	247	244	247	0	0
NY	91	88				
NC	196	199	71	73	125	126
OH	558	592				
OR	58	57	56	55	2	2
PA	522	509	507	490	15	19
SC	105	101	88	84	17	17
SD	66	68	66	68	0	0
TX	364	373				
VA	55	62	23	31	32	31
WA	110	96				
WI	106	99				
Oth Sts ³	505	475	387	360	119	115
US	6,928	6,974	5,915	5,985	1,014	989

¹ Totals may not add due to rounding.

² Data by type of flock not shown for some States to avoid disclosing individual operations, data included in US totals.

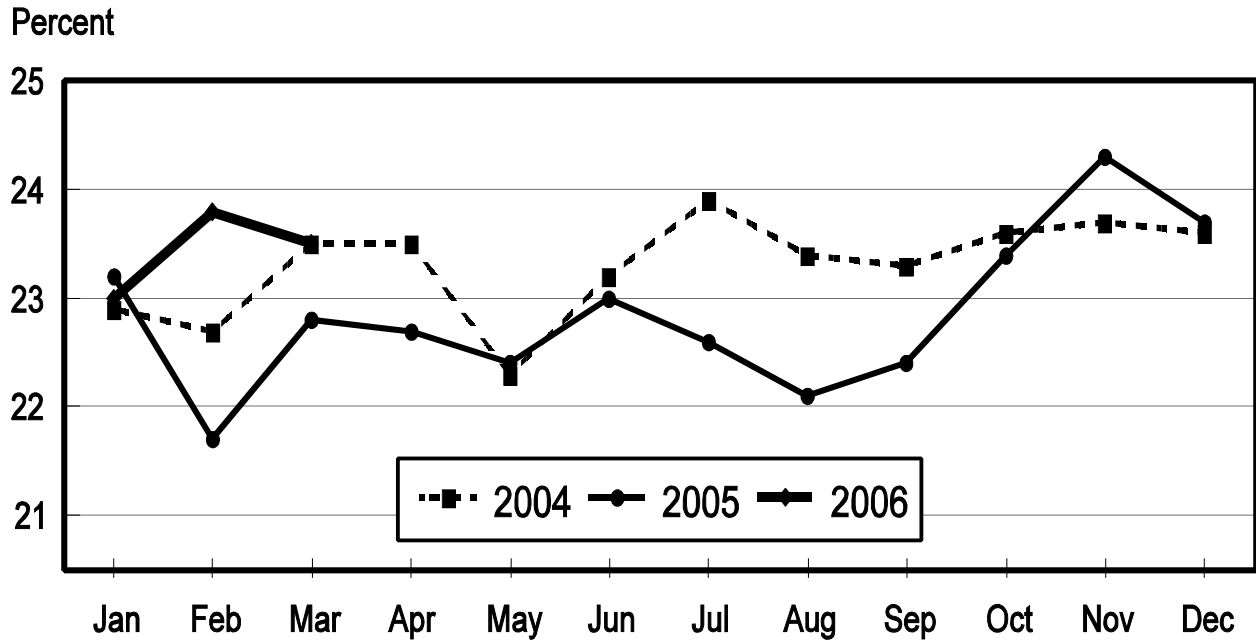
³ Not published separately to avoid disclosing data for individual operations.

**Forced Molt: Percent of All Layers by Month,
United States, 2005-06¹**

Month	Percent Being Molted		Percent with Molt Completed	
	2005	2006	2005	2006
	<i>Percent</i>	<i>Percent</i>	<i>Percent</i>	<i>Percent</i>
Jan	4.1	4.3	23.2	23.0
Feb	4.6	5.2	21.7	23.8
Mar	3.0	4.0	22.8	23.5
Apr	4.1		22.7	
May	4.0		22.4	
Jun	4.2		23.0	
Jul	3.3		22.6	
Aug	4.3		22.1	
Sep	4.4		22.4	
Oct	3.9		23.4	
Nov	3.1		24.3	
Dec	2.8		23.7	

¹ As of first of month.

All Layers: Percent Molt Completed United States, 2004 - 2006 First of the Month



**Forced Molt: Percent of All Layers by State
and United States, March 2005-06 ¹**

State	Percent Being Molted		Percent with Molt Completed	
	2005	2006	2005	2006
	<i>Percent</i>	<i>Percent</i>	<i>Percent</i>	<i>Percent</i>
AL	0.5	0.5	5.0	7.0
AR	2.0	2.0	10.0	8.0
CA	2.0	8.5	31.5	35.5
CO	1.0	0.0	23.0	27.5
CT	0.0	7.5	10.0	11.0
FL	2.5	10.0	25.0	32.0
GA	2.0	2.0	15.5	12.0
HI	6.5	7.0	47.5	54.0
IL	0.0	7.0	33.0	28.0
IN	2.0	2.0	32.5	26.0
IA	5.0	6.5	32.5	31.5
ME	0.0	0.0	0.0	0.0
MD	2.5	4.0	35.0	31.5
MI	2.5	1.0	25.0	17.0
MN	3.0	5.5	27.0	26.0
MS	1.0	2.5	9.5	10.0
MO	6.0	1.5	22.0	24.5
NE	10.0	4.5	20.5	32.5
NY	2.5	2.0	6.5	13.5
NC	1.5	1.0	7.0	8.0
OH	6.0	5.5	22.5	21.0
OR	2.0	3.5	31.0	33.5
PA	2.5	1.5	15.5	21.5
SC	0.0	5.5	23.5	26.0
SD	3.0	5.0	36.0	19.0
TX	1.0	2.0	19.5	23.0
VA	0.0	0.0	6.0	14.5
WA	0.0	3.5	39.5	46.5
WI	2.5	2.0	26.0	37.0
Oth Sts ²	2.1	3.7	25.7	24.1
US	3.0	4.0	22.8	23.5

¹ As of first of month.

² Not published separately to avoid disclosing data for individual operations.

**Hatchery Production: Eggs in Incubators, Chicks Hatched,
and Placements by Type, United States, February-March 2005-06**

Item	2005	2006	2006 as % of 2005
	<i>1,000</i>	<i>1,000</i>	<i>Percent</i>
Egg-Type			
Eggs in Incubators on Mar 1	36,774	36,514	99
Chicks Hatched During Feb	33,932	33,665	99
Chicks Hatched Jan thru Feb	71,868	69,087	96
Pullets Hatched During Feb for Intended Placements in Hatchery Supply Flocks	208	196	94
7-18 Months Earlier ¹	3,080	2,854	93
Broiler-Type			
Eggs in Incubators on Mar 1	658,866	665,624	101
Chicks Hatched During Feb	731,274	733,145	100
Chicks Hatched Jan thru Feb	1,527,300	1,537,218	101
Pullets Hatched During Feb for Intended Placements in Hatchery Supply Flocks	7,325	7,593	104
7-15 Months Earlier ²	62,460	63,060	101

¹ 2006 includes pullet chicks hatched Aug 2004 through Jul 2005.

² 2006 includes pullet chicks hatched Nov 2004 through Jul 2005.

**Egg-Type Eggs in Incubators: By Region and United States,
March 1, 2005-06**

Region	2005	2006	2006 as % of 2005
	<i>1,000</i>	<i>1,000</i>	<i>Percent</i>
North Atlantic	6,198	7,107	115
E North Central	6,853	6,291	92
W North Central	8,102	7,892	97
South Atlantic	3,869	4,527	117
South Central	6,406	5,330	83
West	5,346	5,367	100
US	36,774	36,514	99

Regions:

North Atlantic = CT, ME, MA, NH, NJ, NY, PA, RI, VT.

E North Central = IL, IN, MI, OH, WI.

W North Central = IA, KS, MN, MO, NE, ND, SD.

South Atlantic = DE, FL, GA, MD, NC, SC, VA, WV.

South Central = AL, AR, KY, LA, MS, OK, TN, TX.

West = AK, AZ, CA, CO, HI, ID, MT, NM, NV, OR, UT, WA, WY.

**Egg-Type Chicks Hatched: By State and United States,
February 2005-06**

State	During February			Jan-Feb		
	2005	2006	2006 as % of 2005	2005	2006	2006 as % of 2005
	<i>1,000</i>	<i>1,000</i>	<i>Percent</i>	<i>1,000</i>	<i>1,000</i>	<i>Percent</i>
FL	648	734	113	1,556	1,455	94
GA	2,167	2,179	101	4,494	4,568	102
IN	4,532	4,455	98	10,070	9,651	96
IA	4,999	5,764	115	10,831	12,350	114
MN	818	1,000	122	1,636	1,947	119
PA	4,790	4,269	89	10,608	8,500	80
Oth Sts ¹	15,978	15,264	96	32,673	30,616	94
US	33,932	33,665	99	71,868	69,087	96

¹ Not published separately to avoid disclosing data for individual operations.

Egg-Type Chicks Hatched: By Month, United States, 2004-06

Month	By Months				Cumulative			
	2004	2005	2006	2006 as % of 2005	2004	2005	2006	2006 as % of 2005
	<i>1,000</i>	<i>1,000</i>	<i>1,000</i>	<i>Percent</i>	<i>1,000</i>	<i>1,000</i>	<i>1,000</i>	<i>Percent</i>
Jan	35,155	37,936	35,422	93	35,155	37,936	35,422	93
Feb	31,923	33,932	33,665	99	67,078	71,868	69,087	96
Mar	37,545	41,824			104,623	113,692		
Apr	37,466	38,267			142,089	151,959		
May	38,347	37,449			180,436	189,408		
Jun	37,508	34,537			217,944	223,945		
Jul	34,919	35,310			252,863	259,255		
Aug	36,854	38,953			289,717	298,208		
Sep	36,631	33,788			326,348	331,996		
Oct	34,866	35,367			361,214	367,363		
Nov	38,758	32,752			399,972	400,115		
Dec	37,332	36,224			437,304	436,339		

**Intended Placements: Egg-Type Pullet Chicks for Hatchery Supply
Flocks by Month and Total, United States, 2004-06 ¹**

Month	Pullet Chicks Hatched			2006 as % of 2005	Cumulative Potential Placements Relative to Current Supply Flocks 7-18 Months Earlier ²		
	2004	2005	2006		2004	2005	2006
	<i>1,000</i>	<i>1,000</i>	<i>1,000</i>	<i>Percent</i>	<i>1,000</i>	<i>1,000</i>	<i>1,000</i>
Jan	124	157	188	120	3,012	3,088	2,834
Feb	285	208	196	94	2,960	3,080	2,854
Mar	401	314			2,927	3,210	2,797
Apr	343	308			2,923	3,142	2,967
May	157	190			3,047	3,100	2,888
Jun	212	184			3,139	3,006	2,844
Jul	222	242			3,198	2,995	2,857
Aug	318	261			3,112	3,028	2,888
Sep	205	375			3,172	2,951	2,876
Oct	268	189			3,254	2,864	
Nov	225	181			3,317	2,829	
Dec	235	248			3,185	2,862	
Total	2,995	2,857					

¹ Reported by leading breeders. Coverage may not be 100 percent. Includes expected pullet chicks rom eggs sold during the preceding month at the rate of 125 pullet chicks per 30 dozen case of eggs.

² For February 2006, includes breeder pullet chicks hatched Aug 2004 through Jul 2005. The 7-18 months represent the first laying cycle. Molting and additional laying cycles will increase the cumulative potential placements.

**Broiler-Type Eggs in Incubators: By Region
and United States, March 1, 2005-06**

Region	2005	2006	2006 as % of 2005
	<i>1,000</i>	<i>1,000</i>	<i>Percent</i>
North Atlantic	12,188	11,544	95
E North Central	8,319	9,116	110
W North Central	23,429	23,500	100
South Atlantic	239,577	245,223	102
South Central	349,880	351,279	100
West	25,473	24,962	98
US	658,866	665,624	101

**Broiler-Type Chicks Hatched: By State
and United States, February 2005-06**

State	During February			Jan-Feb		
	2005	2006	2006 as % of 2005	2005	2006	2006 as % of 2005
	<i>1,000</i>	<i>1,000</i>	<i>Percent</i>	<i>1,000</i>	<i>1,000</i>	<i>Percent</i>
AL	100,258	104,694	104	209,521	218,898	104
AR	104,000	104,106	100	218,494	219,239	100
DE	13,004	13,072	101	27,706	28,167	102
FL	4,483	4,583	102	9,337	9,547	102
GA	111,770	112,868	101	235,489	236,701	101
KY	23,483	23,836	102	48,982	49,385	101
LA	13,446	13,750	102	28,107	28,709	102
MD	28,134	29,064	103	59,922	61,562	103
MS	67,202	61,738	92	139,705	130,840	94
NC	60,474	61,152	101	126,785	129,822	102
OK	21,794	21,689	100	45,389	45,253	100
PA	12,951	12,976	100	27,119	26,918	99
SC	16,705	16,977	102	33,998	35,547	105
TX	50,004	51,022	102	104,514	107,783	103
VA	21,485	21,089	98	45,072	44,637	99
CA, MO, TN, & WV	60,356	59,018	98	125,389	122,451	98
19 Sts ¹	709,549	711,634	100	1,485,529	1,495,459	101
Oth Sts ²	21,725	21,511	99	41,771	41,759	100
US	731,274	733,145	100	1,527,300	1,537,218	101

¹ States in the weekly hatchery production estimating program.

² Not published separately to avoid disclosing data for individual operations.

Broiler-Type Chicks Hatched: By Month, United States, 2004-06

Month	By Months				Cumulative			
	2004	2005	2006	2006 as % of 2005	2004	2005	2006	2006 as % of 2005
	<i>1,000</i>	<i>1,000</i>	<i>1,000</i>	<i>Percent</i>	<i>1,000</i>	<i>1,000</i>	<i>1,000</i>	<i>Percent</i>
Jan	774,004	796,026	804,073	101	774,004	796,026	804,073	101
Feb	728,401	731,274	733,145	100	1,502,405	1,527,300	1,537,218	101
Mar	791,915	815,782			2,294,320	2,343,082		
Apr	774,629	789,780			3,068,949	3,132,862		
May	810,484	823,406			3,879,433	3,956,268		
Jun	786,603	796,001			4,666,036	4,752,269		
Jul	806,658	807,654			5,472,694	5,559,923		
Aug	810,285	811,678			6,282,979	6,371,601		
Sep	769,934	769,771			7,052,913	7,141,372		
Oct	756,895	776,333			7,809,808	7,917,705		
Nov	730,353	747,335			8,540,161	8,665,040		
Dec	793,090	807,848			9,333,251	9,472,888		

**Intended Placements: Broiler-Type Pullet Chicks for Hatchery
Supply Flocks by Month and Total, 2004-06 ¹**

Month	Pullet Chicks Hatched			2006 as % of 2005	Cumulative Potential Placements Relative to Current Supply Flocks 7-18 Months Earlier ²		
	2004	2005	2006		2004	2005	2006
	<i>1,000</i>	<i>1,000</i>	<i>1,000</i>	<i>Percent</i>	<i>1,000</i>	<i>1,000</i>	<i>1,000</i>
US Place- ments							
Jan	6,811	6,409	6,825	106	60,300	62,084	62,860
Feb	7,340	7,325	7,593	104	61,106	62,460	63,060
Mar	6,815	7,077			61,421	62,794	63,416
Apr	6,402	6,800			61,600	63,574	63,776
May	7,590	7,783			61,643	63,220	64,311
Jun	6,890	7,109			61,930	63,008	64,284
Jul	6,688	6,657			62,020	62,965	64,319
Aug	7,280	7,484			62,096	62,972	64,344
Sep	7,758	7,132			62,113	62,707	64,154
Oct	6,457	6,944			62,180	62,894	
Nov	7,128	7,298			61,511	63,006	
Dec	6,772	7,112			61,848	63,509	
Annual Total	83,931	85,130					
Total Place- ments ³							
Jan	7,812	7,804	8,018	103			
Feb	8,251	8,664	9,026	104			
Mar	7,801	8,709					
Apr	7,288	7,995					
May	8,693	8,995					
Jun	8,590	8,571					
Jul	8,003	7,846					
Aug	8,416	9,084					
Sep	9,184	8,683					
Oct	7,678	8,683					
Nov	8,411	8,830					
Dec	8,263	8,256					
Annual Total	98,390	102,120					

¹ Reported by leading breeders. Coverage may not be 100 percent. Includes expected pullet chicks from eggs sold during the preceding month at the rate of 125 pullet chicks per 30 dozen case of eggs.

² For Feb 2006, includes breeder pullet chicks hatched Nov 2004 through Jul 2005.

³ U.S. production of intended placements worldwide.

Procedures and Reliability

Data Sources: Primary data for the "**Chickens and Eggs**" report are from weekly and/or monthly questionnaires sent to producers. An attempt is made to collect information for layer and egg estimates from each known contractor and independent producer who has at least 30,000 table egg layers, flocks of hatchery supply layers, or pullet only operations with at least 500 pullets. Coverage for operations with less than 30,000 table egg layers are estimated each month based on data reported in December. Approximately 900 contractors, independent egg producers, and pullet only operations are contacted each month. All known hatcheries, approximately 330, are contacted for information on a weekly and/or monthly basis.

Revisions: The previous month's estimates are subject to revision if late reports or corrected data indicates a different level. Additionally, revisions after the monthly report will be made at the end of the marketing year and published in the annual reports of "**Chickens and Eggs Summary**" and "**Hatchery Production**".

Procedures and Reliability: Operations are mailed a questionnaire and given adequate time to respond by mail. Those that do not respond are phoned. Great care is exercised to ensure that all operations are accounted for during each survey period. However, there are usually missing reports that must be accounted for in the estimates.

Sound statistical methodology is employed to derive estimates from the reported data. All data are checked for unusual values. All operations' data are compared to their own past operating profiles and also to trends from other operations. Data for missing operations are estimated based on similar operations or historical data. Survey data are subject to non-sampling errors such as omissions and mistakes in reporting and in processing. While these errors cannot be measured directly, they are minimized by reviewing all data for consistency and reasonableness.

Egg-type chicks hatched consist of all chicks of egg-type domesticated breeds including males and chicks destined for hatchery supply flocks and research purposes. The relationship of chicks hatched to chicken inventory and poultry marketings is carefully monitored. The disposition of egg-type chicks hatched prior to placement into the laying flock can vary significantly, which can make comparisons to changes in layer inventory inconsistent over time.

Intended placement data reported by leading breeders include pullet chicks expected from eggs sold the preceding month. The breeders in this report account for a large percentage of replacement pullets for hatchery supply flocks. Production of replacement pullets by these breeders indicates the number of pullets available to hatchery supply flocks several months before the pullets will actually move into the flocks. "Hatchery Supply Flocks" include all generations of layers which could lay eggs to supply a hatchery. This includes the generations of parents, grandparents, great-grandparents, pedigree, etc. Also included are research flocks, vaccine flocks, and specific pathogen-free flocks. The broiler cumulative potential placements are a moving total of the intended placements 7-15 months earlier. The egg-type cumulative potential placements of 7-18 months represent the first laying cycle. Molting and additional laying cycles will increase the cumulative potential placements of egg-type hatching flocks.

ACCESS TO REPORTS!!

For your convenience, there are several ways to obtain NASS reports, data products, and services:

INTERNET ACCESS

All NASS reports are available free of charge on the worldwide Internet. For access, connect to the Internet and go to the NASS Home Page at: www.nass.usda.gov.

E-MAIL SUBSCRIPTION

All NASS reports are available by subscription free of charge direct to your e-mail address. Starting with the NASS Home Page at www.nass.usda.gov, under the right navigation, *Receive reports by Email*, click on **National** or **State**. Follow the instructions on the screen.

PRINTED REPORTS OR DATA PRODUCTS

CALL OUR TOLL-FREE ORDER DESK: 800-999-6779 (U.S. and Canada)
Other areas, please call 703-605-6220 FAX: 703-605-6900
(Visa, MasterCard, check, or money order acceptable for payment.)

ASSISTANCE

For **assistance** with general agricultural statistics or further information about NASS or its products or services, contact the **Agricultural Statistics Hotline** at **800-727-9540**, 7:30 a.m. to 4:00 p.m. ET, or e-mail: nass@nass.usda.gov.

The U.S. Department of Agriculture (USDA) prohibits discrimination in all its programs and activities on the basis of race, color, national origin, age, disability, and where applicable, sex, marital status, familial status, parental status, religion, sexual orientation, genetic information, political beliefs, reprisal, or because all or part of an individual's income is derived from any public assistance program. (Not all prohibited bases apply to all programs.) Persons with disabilities who require alternative means for communication of program information (Braille, large print, audiotape, etc.) should contact USDA's TARGET Center at (202) 720-2600 (voice and TDD).

To file a complaint of discrimination, write to USDA, Director, Office of Civil Rights, 1400 Independence Avenue, S.W., Washington, D.C. 20250-9410, or call (800) 795-3272 (voice) or (202) 720-6382 (TDD). USDA is an equal opportunity provider and employer.