



NASS

FACT FINDERS FOR AGRICULTURE
UNITED STATES DEPARTMENT OF AGRICULTURE

Washington, D.C.

Chickens And Eggs

Released April 21, 2006, by the National Agricultural Statistics Service (NASS), Agricultural Statistics Board, U.S. Department of Agriculture. For information on "Layers and Eggs" call Sharyn Lavender at (202) 720-3244, for "Chicks Hatched" call Jody Roberts at (202) 690-8632, office hours 7:30 a.m. to 4:00 p.m. ET.

March Egg Production Up 1 Percent

U.S. egg production totaled 7.84 billion during March 2006, up 1 percent from last year. Production included 6.73 billion table eggs, and 1.11 billion hatching eggs, of which 1.04 billion were broiler-type and 69 million were egg-type. The number of layers during March 2006 averaged 350 million, up 1 percent from last year. March egg production per 100 layers was 2,239 eggs, up slightly from March 2005.

All layers in the U.S. on April 1, 2006, totaled 350 million, up 2 percent from last year. The 350 million layers consisted of 292 million layers producing table-type eggs, 55.5 million layers producing broiler-type hatching eggs, and 2.84 million layers producing egg-type hatching eggs. Rate of lay per day on April 1, 2006, averaged 72.8 eggs per 100 layers, up 1 percent from April 1, 2005.

Egg-Type Chicks Hatched Down 7 Percent

Egg-type chicks hatched during March 2006 totaled 38.9 million, down 7 percent from March 2005. Eggs in incubators totaled 35.8 million on April 1, 2006, down 5 percent from a year ago.

Domestic placements of egg-type pullet chicks for future hatchery supply flocks by leading breeders totaled 286,000 during March 2006, down 9 percent from March 2005.

Broiler-Type Chicks Hatched Up Slightly

Broiler-type chicks hatched during March 2006 totaled 817 million, up slightly from March 2005. Eggs in incubators totaled 659 million on April 1, 2006, down slightly from a year earlier.

Leading breeders placed 7.01 million broiler-type pullet chicks for future domestic hatchery supply flocks during March 2006, down 1 percent from March 2005.

Contents

Page

U.S. Average Number of Layers on Hand and Egg Production	1
U.S. Layers on Hand and Eggs Produced by Type, Forced Molt, and Pullets	3
Layers on Hand and Eggs Produced by State	5
Egg Production by Type and State	7
Forced Molt	9
Egg-Type Hatchery	11
Egg-Type Intended Placements	13
Broiler-Type Hatchery	13
Broiler-Type Intended Placements	15
Procedures and Reliability	16

**All Layers: Average Number on Hand During the Month,
United States, 2004-06**

Month	2004	2005	2006
	<i>1,000 Layers</i>	<i>1,000 Layers</i>	<i>1,000 Layers</i>
Dec ¹	339,305	345,618	348,545
Jan	337,948	347,864	349,246
Feb	338,905	348,791	349,764
Mar	340,699	346,959	350,085
Apr	341,550	343,574	
May	341,562	341,819	
Jun	342,513	339,856	
Jul	343,180	338,573	
Aug	343,653	339,351	
Sep	344,452	340,914	
Oct	345,075	342,823	
Nov	344,633	345,874	

¹ December preceding year.

**Eggs: Production During the Month by Type,
United States, 2005-06 ¹**

Month	Total Eggs		Table Eggs		Hatching Eggs	
	2005	2006	2005	2006	2005	2006
	<i>Million Eggs</i>	<i>Million Eggs</i>	<i>Million Eggs</i>	<i>Million Eggs</i>	<i>Million Eggs</i>	<i>Million Eggs</i>
Dec ²	7,721	7,791	6,636	6,703	1,086	1,088
Jan	7,626	7,721	6,526	6,624	1,101	1,097
Feb	6,928	6,977	5,915	5,988	1,014	989
Mar	7,738	7,837	6,610	6,733	1,129	1,105
Apr	7,407		6,311		1,097	
May	7,572		6,439		1,133	
Jun	7,346		6,250		1,096	
Jul	7,563		6,444		1,120	
Aug	7,528		6,425		1,104	
Sep	7,348		6,279		1,070	
Oct	7,665		6,561		1,104	
Nov	7,514		6,459		1,055	
During Year	89,960		76,859		13,103	

¹ Totals may not add due to rounding.

² December preceding year.

Table Egg Layers

United States, 2004 - 2006

First of the Month

Million Layers

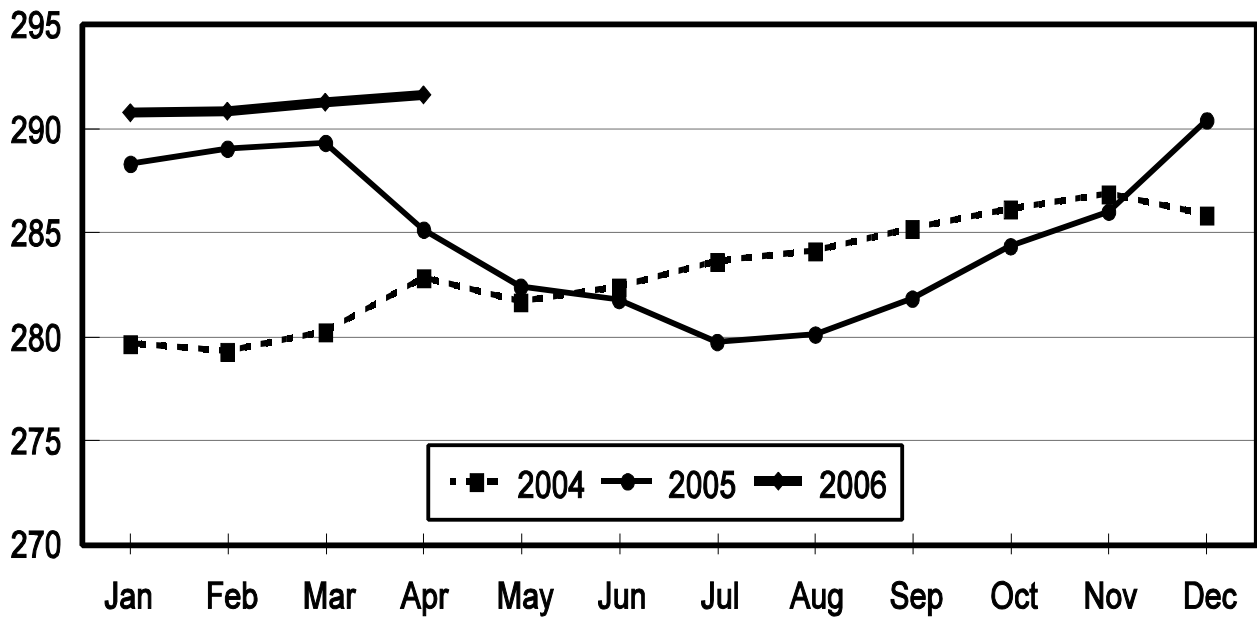
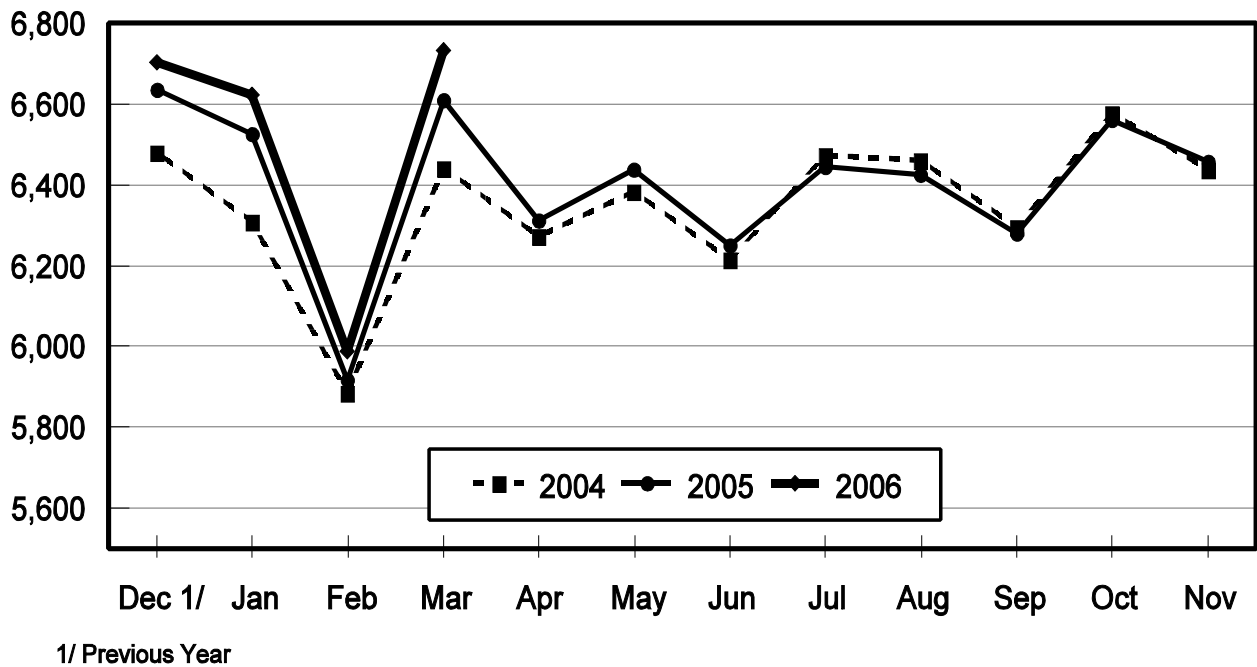


Table Egg Production

United States, 2004 - 2006

During the Month

Million Eggs



**Layers and Eggs: Layers on Hand and Eggs Produced by Type,
and Forced Molt, United States, February-March 2005-06¹**

Item	Unit	2005	2006 ²	2006 as % of 2005
Layers During Feb	1,000			
All Layers		348,791	349,764	100
Table Egg Type		289,216	291,085	101
Hatching Egg Type		59,575	58,679	98
Broiler-Type Hatching		56,890	55,767	98
Egg-Type Hatching		2,685	2,912	108
Eggs per 100 Layers During Feb	Number			
All Layers		1,986	1,995	100
Table Egg Type		2,045	2,057	101
Hatching Egg Type		1,702	1,685	99
Broiler-Type Hatching		1,679	1,662	99
Egg-Type Hatching		2,197	2,129	97
Eggs Produced During Feb	Million			
All Layers		6,928	6,977	101
Table Egg Type		5,915	5,988	101
Hatching Egg Type		1,014	989	98
Broiler-Type Hatching		955	927	97
Egg-Type Hatching		59	62	105
Layers on Mar 1	1,000			
All Layers		349,117	350,184	100
Table Egg Type		289,322	291,324	101
Hatching Egg Type		59,795	58,860	98
Broiler-Type Hatching		57,133	55,960	98
Egg-Type Hatching		2,662	2,900	109
Eggs per 100 Layers on Mar 1	Number			
All Layers		71.7	71.6	100
Table Egg Type		74.0	73.9	100
Hatching Egg Type		60.5	60.2	100
Broiler-Type Hatching		59.8	59.4	99
Egg-Type Hatching		77.4	76.4	99
Forced Molt Layers on Mar 1	Percent			
Percent Being Molted		3.0	4.0	133
Percent with Molt Completed		22.8	24.4	107
Layers Sold for Slaughter During Feb	1,000	14,355	13,556	94
Layers Rendered, Died, Destroyed, Composted or Disappeared For Any Reason During Feb	1,000	7,232	8,000	111
Pullets on Mar 1	1,000	100,738	97,065	96
Pullets Added During Feb ³	1,000	23,776	23,324	98

¹ Totals may not add due to rounding.

² Revised.

³ Pullet chicks less than 3 days old added to pullet flocks.

**Layers and Eggs: Layers on Hand and Eggs Produced by Type,
and Forced Molt, United States, March-April 2005-06 ¹**

Item	Unit	2005	2006	2006 as % of 2005
Layers During Mar	1,000			
All Layers		346,959	350,085	101
Table Egg Type		287,259	291,484	101
Hatching Egg Type		59,700	58,601	98
Broiler-Type Hatching		57,042	55,730	98
Egg-Type Hatching		2,658	2,871	108
Eggs per 100 Layers During Mar	Number			
All Layers		2,230	2,239	100
Table Egg Type		2,301	2,310	100
Hatching Egg Type		1,891	1,886	100
Broiler-Type Hatching		1,867	1,859	100
Egg-Type Hatching		2,408	2,403	100
Eggs Produced During Mar	Million			
All Layers		7,738	7,837	101
Table Egg Type		6,610	6,733	102
Hatching Egg Type		1,129	1,105	98
Broiler-Type Hatching		1,065	1,036	97
Egg-Type Hatching		64	69	108
Layers on Apr 1	1,000			
All Layers		344,759	349,953	102
Table Egg Type		285,170	291,625	102
Hatching Egg Type		59,589	58,328	98
Broiler-Type Hatching		56,940	55,493	97
Egg-Type Hatching		2,649	2,835	107
Eggs per 100 Layers on Apr 1	Number			
All Layers		72.1	72.8	101
Table Egg Type		74.4	75.2	101
Hatching Egg Type		61.1	60.8	100
Broiler-Type Hatching		60.3	59.8	99
Egg-Type Hatching		77.7	79.1	102
Forced Molt Layers on Apr 1	Percent			
Percent Being Molted		4.1	2.3	56
Percent with Molt Completed		22.7	24.9	110
Layers Sold for Slaughter During Mar	1,000	17,359	14,089	81
Layers Rendered, Died, Destroyed, Composted or Disappeared For Any Reason During Mar	1,000	9,011	6,697	74
Pullets on Apr 1	1,000	101,917	101,787	100
Pullets Added During Mar ²	1,000	24,452	25,892	106

¹ Totals may not add due to rounding.

² Pullet chicks less than 3 days old added to pullet flocks.

**Layers and Eggs: Layers on Hand and Eggs Produced by State
and United States, During February 2005-06**

State	Table Egg Layers in Flocks 30,000 and Above		All Layers ¹		Eggs per 100 for All Layers ¹	
	2005	2006 ²	2005	2006 ²	2005	2006 ²
	<i>1,000</i>	<i>1,000</i>	<i>1,000</i>	<i>1,000</i>	<i>Number</i>	<i>Number</i>
AL	1,868	1,696	9,232	8,897	1,787	1,765
AR	4,418	4,125	15,099	14,481	1,729	1,726
CA	19,157	18,881	19,655	19,377	2,020	1,977
CO	3,278	3,245	3,813	3,731	2,151	2,198
CT	2,936	2,906	3,001	2,957	2,199	2,198
FL	9,960	10,959	10,465	11,406	2,121	2,016
GA	11,204	9,785	20,628	19,063	1,895	1,915
HI	464	462	500	475	1,880	1,663
IL	4,226	4,246	4,456	4,474	1,997	2,168
IN	22,814	24,303	23,545	25,043	2,005	2,009
IA	49,082	50,795	49,860	51,600	2,006	2,054
ME	4,055	4,026	4,113	4,095	1,629	2,076
MD	2,981	2,684	3,088	2,814	2,073	2,026
MI	7,606	8,116	7,869	8,380	2,033	2,112
MN	10,488	10,899	11,023	11,364	2,087	2,006
MS	1,611	1,610	7,132	6,839	1,753	1,740
MO	6,124	6,132	7,415	7,279	1,996	1,965
NE	12,018	11,752	12,093	11,827	2,018	2,088
NY	3,852	3,820	4,177	4,060	2,179	2,167
NC	3,339	3,402	10,948	11,073	1,790	1,797
OH	27,641	29,039	28,129	29,570	1,984	2,002
OR	2,677	2,593	2,843	2,766	2,040	2,061
PA	22,713	21,719	24,455	23,667	2,135	2,151
SC	4,041	3,893	5,138	5,075	2,044	1,990
SD	3,027	3,188	3,127	3,288	2,111	2,068
TX	13,626	14,350	18,142	18,841	2,006	2,001
VA	1,200	1,545	3,107	3,444	1,770	1,800
WA	4,928	4,667	4,997	4,735	2,201	1,985
WI	4,537	4,315	5,050	4,845	2,099	2,043
Oth Sts ³	17,405	16,151	25,691	24,298	1,966	1,955
US	283,276	285,304	348,791	349,764	1,986	1,995

¹ Includes all layers and eggs produced in both table egg and hatching egg flocks regardless of size.

² Revised.

³ Not published separately to avoid disclosing data for individual operations.

**Layers and Eggs: Layers on Hand and Eggs Produced by State
and United States, During March 2005-06**

State	Table Egg Layers in Flocks 30,000 and Above		All Layers ¹		Eggs per 100 for All Layers ¹	
	2005	2006	2005	2006	2005	2006
	<i>1,000</i>	<i>1,000</i>	<i>1,000</i>	<i>1,000</i>	<i>Number</i>	<i>Number</i>
AL	1,763	1,711	9,117	8,858	1,974	1,930
AR	4,225	4,303	14,924	14,651	1,963	1,925
CA	19,383	19,206	19,957	19,693	2,230	2,189
CO	3,257	3,164	3,770	3,633	2,440	2,450
CT	3,033	2,934	3,096	2,985	2,326	2,446
FL	10,223	10,973	10,772	11,416	2,404	2,295
GA	10,951	9,897	20,335	19,237	2,100	2,116
HI	471	453	506	467	1,996	1,863
IL	4,111	4,390	4,341	4,613	2,419	2,428
IN	22,903	24,077	23,631	24,772	2,247	2,301
IA	48,392	51,345	49,136	52,147	2,312	2,288
ME	4,173	4,000	4,233	4,075	1,819	2,282
MD	2,861	2,455	2,966	2,593	2,293	2,275
MI	7,754	8,172	8,017	8,436	2,308	2,418
MN	10,475	10,816	11,000	11,292	2,300	2,258
MS	1,629	1,646	7,133	6,638	1,977	2,004
MO	6,045	6,152	7,342	7,317	2,261	2,241
NE	11,986	11,742	12,061	11,817	2,189	2,327
NY	3,839	3,776	4,163	4,021	2,426	2,412
NC	3,296	3,350	10,997	11,081	1,973	2,003
OH	27,601	28,526	28,089	29,053	2,271	2,261
OR	2,657	2,550	2,835	2,723	2,328	2,350
PA	22,630	21,908	24,399	23,818	2,398	2,381
SC	3,911	3,880	4,995	5,096	2,182	2,119
SD	2,860	3,184	2,960	3,284	2,264	2,284
TX	13,363	14,673	17,863	19,247	2,250	2,265
VA	1,325	1,486	3,339	3,389	1,887	2,095
WA	4,856	4,747	4,924	4,815	2,417	2,305
WI	4,314	4,280	4,821	4,822	2,344	2,343
Oth Sts ²	17,033	15,906	25,237	24,096	2,195	2,216
US	281,320	285,702	346,959	350,085	2,230	2,239

¹ Includes all layers and eggs produced in both table egg and hatching egg flocks regardless of size.

² Not published separately to avoid disclosing data for individual operations.

**Egg Production: By Type, State, and United States,
February 2005-06 ¹**

State	Total Production		Table Eggs ²		Hatching Eggs ²	
	2005	2006 ³	2005	2006 ³	2005	2006 ³
	<i>Million Eggs</i>	<i>Million Eggs</i>	<i>Million Eggs</i>	<i>Million Eggs</i>	<i>Million Eggs</i>	<i>Million Eggs</i>
AL	165	157	40	38	125	119
AR	261	250	90	86	171	164
CA	397	383				
CO	82	82				
CT	66	65				
FL	222	230	214	222	8	8
GA	391	365	228	204	163	161
HI	9.4	7.9	9.4	7.9	0	0
IL	89	97	86	94	3	3
IN	472	503	461	491	11	12
IA	1,000	1,060				
ME	67	85				
MD	64	57	63	56	1	1
MI	160	177				
MN	230	228	223	221	7	7
MS	125	119	34	34	91	85
MO	148	143				
NE	244	247	244	247	0	0
NY	91	88				
NC	196	199	71	73	125	126
OH	558	592				
OR	58	57	56	55	2	2
PA	522	509	507	490	15	19
SC	105	101	88	84	17	17
SD	66	68	66	68	0	0
TX	364	377				
VA	55	62	23	31	32	31
WA	110	94				
WI	106	99				
Oth Sts ⁴	505	475	387	360	119	115
US	6,928	6,977	5,915	5,988	1,014	989

¹ Totals may not add due to rounding.

² Data by type of flock not shown for some States to avoid disclosing individual operations, data included in US totals.

³ Revised.

⁴ Not published separately to avoid disclosing data for individual operations.

**Egg Production: By Type, State, and United States,
March 2005-06 ¹**

State	Total Production		Table Eggs ²		Hatching Eggs ²	
	2005	2006	2005	2006	2005	2006
	<i>Million Eggs</i>	<i>Million Eggs</i>	<i>Million Eggs</i>	<i>Million Eggs</i>	<i>Million Eggs</i>	<i>Million Eggs</i>
AL	180	171	42	40	138	131
AR	293	282	99	101	194	181
CA	445	431				
CO	92	89				
CT	72	73				
FL	259	262	250	253	9	9
GA	427	407	248	229	179	178
HI	10.1	8.7	10.1	8.7	0	0
IL	105	112	101	108	4	4
IN	531	570	519	557	12	13
IA	1,136	1,193				
ME	77	93				
MD	68	59	67	58	1	1
MI	185	204				
MN	253	255	245	247	8	8
MS	141	133	37	40	104	93
MO	166	164				
NE	264	275	264	275	0	0
NY	101	97				
NC	217	222	78	82	139	140
OH	638	657				
OR	66	64	64	62	2	2
PA	585	567	568	546	17	21
SC	109	108	90	89	19	19
SD	67	75	67	75	0	0
TX	402	436				
VA	63	71	26	35	37	36
WA	119	111				
WI	113	113				
Oth Sts ³	554	534	424	403	131	131
US	7,738	7,837	6,610	6,733	1,129	1,105

¹ Totals may not add due to rounding.

² Data by type of flock not shown for some States to avoid disclosing individual operations, data included in US totals.

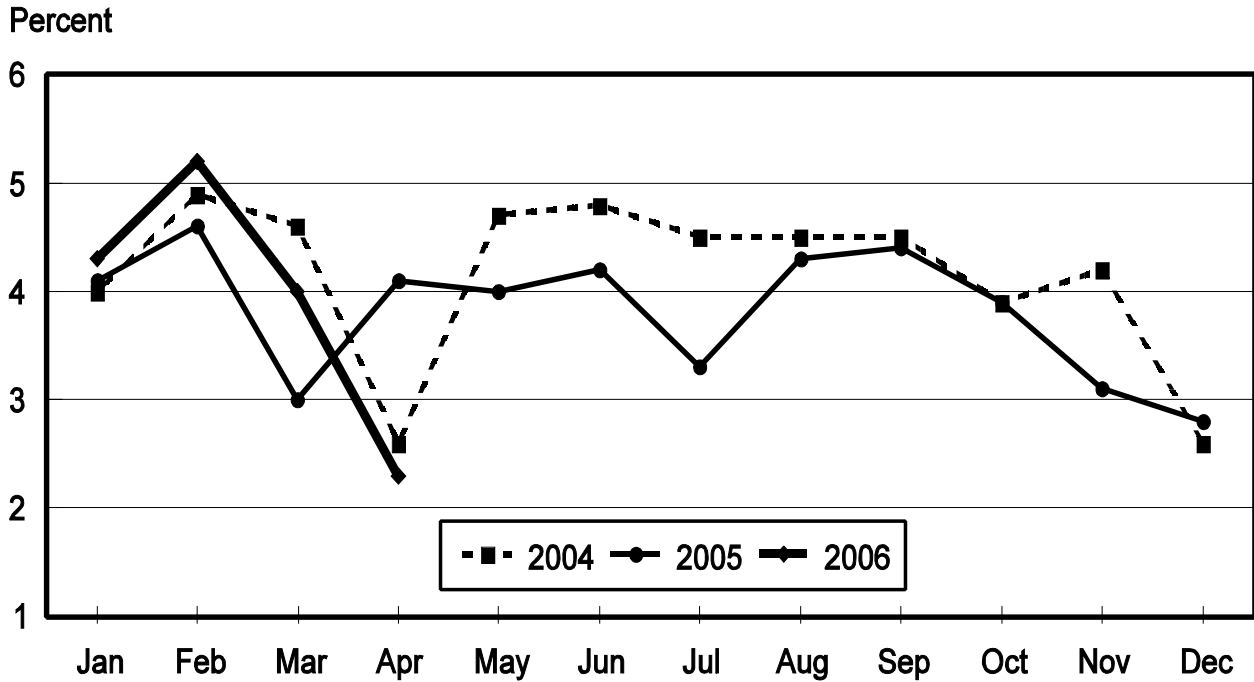
³ Not published separately to avoid disclosing data for individual operations.

**Forced Molt: Percent of All Layers by Month,
United States, 2005-06¹**

Month	Percent Being Molted		Percent with Molt Completed	
	2005	2006	2005	2006
	<i>Percent</i>	<i>Percent</i>	<i>Percent</i>	<i>Percent</i>
Jan	4.1	4.3	23.2	23.0
Feb	4.6	5.2	21.7	23.8
Mar	3.0	4.0	22.8	24.4
Apr	4.1	2.3	22.7	24.9
May	4.0		22.4	
Jun	4.2		23.0	
Jul	3.3		22.6	
Aug	4.3		22.1	
Sep	4.4		22.4	
Oct	3.9		23.4	
Nov	3.1		24.3	
Dec	2.8		23.7	

¹ As of first of month.

**All Layers: Percent Being Molted
United States, 2004 - 2006
First of the Month**



**Forced Molt: Percent of All Layers by State
and United States, April 2005-06 ¹**

State	Percent Being Molted		Percent with Molt Completed	
	2005	2006	2005	2006
	<i>Percent</i>	<i>Percent</i>	<i>Percent</i>	<i>Percent</i>
AL	0.5	1.0	4.5	7.0
AR	0.5	0.0	8.5	9.5
CA	7.5	5.0	33.0	36.0
CO	3.0	2.5	27.0	28.0
CT	6.0	0.0	9.5	18.5
FL	3.0	4.0	25.0	37.5
GA	5.5	0.5	13.5	12.5
HI	8.0	7.5	41.0	51.0
IL	7.5	2.0	30.0	25.5
IN	3.0	1.0	32.0	30.5
IA	4.0	1.5	35.0	37.0
ME	0.0	0.0	0.0	0.0
MD	11.0	4.5	31.0	29.5
MI	5.0	1.0	26.5	16.0
MN	0.0	4.0	25.0	31.0
MS	2.0	1.0	9.5	11.5
MO	2.0	0.0	19.0	24.0
NE	9.0	7.0	24.5	28.5
NY	2.5	1.5	5.0	10.5
NC	1.0	1.0	8.5	9.0
OH	4.0	1.5	22.5	23.5
OR	6.5	10.0	27.0	31.5
PA	3.0	3.5	15.0	18.5
SC	7.5	3.0	24.5	26.5
SD	11.5	5.0	33.5	19.0
TX	4.0	1.5	20.5	22.5
VA	8.5	0.0	2.0	14.0
WA	8.0	5.0	33.0	47.0
WI	5.5	4.0	22.5	38.0
Oth Sts ²	3.7	3.0	23.6	23.5
US	4.1	2.3	22.7	24.9

¹ As of first of month.

² Not published separately to avoid disclosing data for individual operations.

**Hatchery Production: Eggs in Incubators, Chicks Hatched,
and Placements by Type, United States, March-April 2005-06**

Item	2005	2006	2006 as % of 2005
	<i>1,000</i>	<i>1,000</i>	<i>Percent</i>
Egg-Type			
Eggs in Incubators on Apr 1	37,732	35,797	95
Chicks Hatched During Mar	41,701	38,918	93
Chicks Hatched Jan thru Mar	114,419	108,005	94
Pullets Hatched During Mar for Intended Placements in Hatchery Supply Flocks	314	286	91
7-18 Months Earlier ¹	3,222	2,788	87
Broiler-Type			
Eggs in Incubators on Apr 1	660,137	658,570	100
Chicks Hatched During Mar	816,552	817,068	100
Chicks Hatched Jan thru Mar	2,346,166	2,354,286	100
Pullets Hatched During Mar for Intended Placements in Hatchery Supply Flocks	7,077	7,012	99
7-15 Months Earlier ²	62,794	63,416	101

¹ 2006 includes pullet chicks hatched Sep 2004 through Aug 2005.

² 2006 includes pullet chicks hatched Dec 2004 through Aug 2005.

**Egg-Type Eggs in Incubators: By Region and United States,
April 1, 2005-06**

Region	2005	2006	2006 as % of 2005
	<i>1,000</i>	<i>1,000</i>	<i>Percent</i>
North Atlantic	6,251	5,722	92
E North Central	7,125	6,922	97
W North Central	7,499	7,674	102
South Atlantic	4,408	4,602	104
South Central	4,958	6,552	132
West	7,491	4,325	58
US	37,732	35,797	95

Regions:

North Atlantic = CT, ME, MA, NH, NJ, NY, PA, RI, VT.

E North Central = IL, IN, MI, OH, WI.

W North Central = IA, KS, MN, MO, NE, ND, SD.

South Atlantic = DE, FL, GA, MD, NC, SC, VA, WV.

South Central = AL, AR, KY, LA, MS, OK, TN, TX.

West = AK, AZ, CA, CO, HI, ID, MT, NM, NV, OR, UT, WA, WY.

**Egg-Type Chicks Hatched: By State and United States,
March 2005-06**

State	During March			Jan-Mar		
	2005	2006	2006 as % of 2005	2005	2006	2006 as % of 2005
	<i>1,000</i>	<i>1,000</i>	<i>Percent</i>	<i>1,000</i>	<i>1,000</i>	<i>Percent</i>
FL	656	731	111	2,212	2,186	99
GA	2,394	2,393	100	6,888	6,961	101
IN	5,029	5,465	109	14,557	15,116	104
IA	7,241	7,320	101	18,072	19,670	109
MN	1,198	1,105	92	2,834	3,052	108
PA	5,201	5,019	97	15,809	13,519	86
Oth Sts ¹	19,982	16,885	85	54,047	47,501	88
US	41,701	38,918	93	114,419	108,005	94

¹ Not published separately to avoid disclosing data for individual operations.

Egg-Type Chicks Hatched: By Month, United States, 2005-06

Month	By Months			Cumulative		
	2005	2006	2006 as % of 2005	2005	2006	2006 as % of 2005
	<i>1,000</i>	<i>1,000</i>	<i>Percent</i>	<i>1,000</i>	<i>1,000</i>	<i>Percent</i>
Jan	38,291	35,422	93	38,921	35,422	93
Feb	34,427	33,665	98	72,718	69,087	95
Mar	41,701	38,918	93	114,419	108,005	94
Apr	38,049			152,468		
May	38,792			191,260		
Jun	35,034			226,294		
Jul	34,897			261,191		
Aug	38,700			299,891		
Sep	33,623			333,514		
Oct	35,461			368,975		
Nov	32,285			401,260		
Dec	35,917			437,177		

**Intended Placements: Egg-Type Pullet Chicks for Hatchery Supply
Flocks by Month and Total, United States, 2005-06¹**

Month	Pullet Chicks Hatched		2006 as % of 2005	Cumulative Potential Plcmts Relative to Current Supply Flocks 7-18 Months Earlier ²	
	2005	2006		2005	2006
	<i>1,000</i>	<i>1,000</i>	<i>Percent</i>	<i>1,000</i>	<i>1,000</i>
Jan	157	188	120	3,088	2,837
Feb	208	196	94	3,092	2,854
Mar	314	286	91	3,222	2,788
Apr	308			3,154	2,958
May	190			3,112	2,878
Jun	175			3,018	2,833
Jul	242			3,007	2,845
Aug	261			3,040	2,876
Sep	375			2,963	2,864
Oct	188			2,876	2,836
Nov	180			2,841	
Dec	247			2,874	
Total	2,845				

¹ Reported by leading breeders. Coverage may not be 100 percent. Includes expected pullet chicks rom eggs sold during the preceding month at the rate of 125 pullet chicks per 30 dozen case of eggs.

² For March 2006, includes breeder pullet chicks hatched Sep 2004 through Aug 2005. The 7-18 months represent the first laying cycle. Molting and additional laying cycles will increase the cumulative potential placements.

**Broiler-Type Eggs in Incubators: By Region
and United States, April 1, 2005-06**

Region	2005	2006	2006 as % of 2005
	<i>1,000</i>	<i>1,000</i>	<i>Percent</i>
North Atlantic	12,074	12,186	101
E North Central	9,179	9,471	103
W North Central	24,570	24,292	99
South Atlantic	239,131	241,961	101
South Central	348,666	344,559	99
West	26,517	26,101	98
US	660,137	658,570	100

**Broiler-Type Chicks Hatched: By State
and United States, March 2005-06**

State	During March			Jan-Mar		
	2005	2006	2006 as % of 2005	2005	2006	2006 as % of 2005
	<i>1,000</i>	<i>1,000</i>	<i>Percent</i>	<i>1,000</i>	<i>1,000</i>	<i>Percent</i>
AL	113,313	117,447	104	322,825	336,345	104
AR	116,222	113,903	98	335,336	333,142	99
DE	14,897	14,388	97	42,603	42,555	100
FL	4,953	5,052	102	14,290	14,999	102
GA	123,271	126,415	103	358,790	363,116	101
KY	26,823	25,123	94	75,830	74,508	98
LA	15,018	15,236	101	43,125	43,945	102
MD	32,238	31,883	99	92,160	93,445	101
MS	73,387	68,568	93	213,092	199,408	94
NC	68,661	70,944	103	195,446	200,766	103
OK	23,882	23,901	100	69,271	69,154	100
PA	14,870	14,202	96	42,013	41,120	98
SC	19,051	19,578	103	53,226	55,125	104
TX	56,850	56,907	100	161,368	164,690	102
VA	23,751	23,997	101	68,823	68,634	100
CA, MO, TN, & WV	67,403	67,453	100	192,772	189,904	99
19 Sts ¹	794,590	794,997	100	2,280,970	2,290,456	100
Oth Sts ²	21,962	22,071	100	65,196	63,830	98
US	816,552	817,068	100	2,346,166	2,354,286	100

¹ States in the weekly hatchery production estimating program.

² Not published separately to avoid disclosing data for individual operations.

Broiler-Type Chicks Hatched: By Month, United States, 2005-06

Month	By Months			Cumulative		
	2005	2006	2006 as % of 2005	2005	2006	2006 as % of 2005
	<i>1,000</i>	<i>1,000</i>	<i>Percent</i>	<i>1,000</i>	<i>1,000</i>	<i>Percent</i>
Jan	797,576	804,073	101	797,576	804,073	101
Feb	732,038	733,145	100	1,529,614	1,537,218	101
Mar	816,552	817,068	100	2,346,166	2,354,286	100
Apr	792,173			3,138,339		
May	823,993			3,962,332		
Jun	796,945			4,759,277		
Jul	808,382			5,567,659		
Aug	812,474			6,380,133		
Sep	771,146			7,151,279		
Oct	776,449			7,927,728		
Nov	747,866			8,675,594		
Dec	808,525			9,484,119		

**Intended Placements: Broiler-Type Pullet Chicks for Hatchery
Supply Flocks by Month and Total, 2005-06 ¹**

Month	Pullet Chicks Hatched		2006 as % of 2005	Cumulative Potential Plcmts Relative to Current Supply Flocks 7-18 Months Earlier ²	
	2005	2006		2005	2006
	<i>1,000</i>	<i>1,000</i>	<i>Percent</i>	<i>1,000</i>	<i>1,000</i>
US Place- ments					
Jan	6,409	6,825	106	62,084	62,860
Feb	7,325	7,593	104	62,460	63,060
Mar	7,077	7,012	99	62,794	63,416
Apr	6,800			63,574	63,776
May	7,783			63,220	64,311
Jun	7,109			63,008	64,284
Jul	6,657			62,965	64,319
Aug	7,484			62,972	64,344
Sep	7,132			62,707	64,154
Oct	6,944			62,894	64,057
Nov	7,298			63,006	
Dec	7,112			63,509	
Annual Total	85,130				
Total Place- ₃ ments					
Jan	7,804	8,018	103		
Feb	8,664	9,026	104		
Mar	8,709	8,415	97		
Apr	7,995				
May	8,995				
Jun	8,571				
Jul	7,846				
Aug	9,084				
Sep	8,683				
Oct	8,279				
Nov	8,830				
Dec	8,256				
Annual Total	101,716				

¹ Reported by leading breeders. Coverage may not be 100 percent. Includes expected pullet chicks from eggs sold during the preceding month at the rate of 125 pullet chicks per 30 dozen case of eggs.

² For Mar 2006, includes breeder pullet chicks hatched Dec 2004 through Aug 2005.

³ U.S. production of intended placements worldwide.

Procedures and Reliability

Data Sources: Primary data for the "**Chickens and Eggs**" report are from weekly and/or monthly questionnaires sent to producers. An attempt is made to collect information for layer and egg estimates from each known contractor and independent producer who has at least 30,000 table egg layers, flocks of hatchery supply layers, or pullet only operations with at least 500 pullets. Coverage for operations with less than 30,000 table egg layers are estimated each month based on data reported in December. Approximately 900 contractors, independent egg producers, and pullet only operations are contacted each month. All known hatcheries, approximately 330, are contacted for information on a weekly and/or monthly basis.

Revisions: The previous month's estimates are subject to revision if late reports or corrected data indicates a different level. Additionally, revisions after the monthly report will be made at the end of the marketing year and published in the annual reports of "**Chickens and Eggs Summary**" and "**Hatchery Production**".

Procedures and Reliability: Operations are mailed a questionnaire and given adequate time to respond by mail. Those that do not respond are phoned. Great care is exercised to ensure that all operations are accounted for during each survey period. However, there are usually missing reports that must be accounted for in the estimates.

Sound statistical methodology is employed to derive estimates from the reported data. All data are checked for unusual values. All operations' data are compared to their own past operating profiles and also to trends from other operations. Data for missing operations are estimated based on similar operations or historical data. Survey data are subject to non-sampling errors such as omissions and mistakes in reporting and in processing. While these errors cannot be measured directly, they are minimized by reviewing all data for consistency and reasonableness.

Egg-type chicks hatched consist of all chicks of egg-type domesticated breeds including males and chicks destined for hatchery supply flocks and research purposes. The relationship of chicks hatched to chicken inventory and poultry marketings is carefully monitored. The disposition of egg-type chicks hatched prior to placement into the laying flock can vary significantly, which can make comparisons to changes in layer inventory inconsistent over time.

Intended placement data reported by leading breeders include pullet chicks expected from eggs sold the preceding month. The breeders in this report account for a large percentage of replacement pullets for hatchery supply flocks. Production of replacement pullets by these breeders indicates the number of pullets available to hatchery supply flocks several months before the pullets will actually move into the flocks. "Hatchery Supply Flocks" include all generations of layers which could lay eggs to supply a hatchery. This includes the generations of parents, grandparents, great-grandparents, pedigree, etc. Also included are research flocks, vaccine flocks, and specific pathogen-free flocks. The broiler cumulative potential placements are a moving total of the intended placements 7-15 months earlier. The egg-type cumulative potential placements of 7-18 months represent the first laying cycle. Molting and additional laying cycles will increase the cumulative potential placements of egg-type hatching flocks.

Information Contacts

Dan Kerestes, Chief, Livestock Branch (202) 720-3570

Darin Jantzi, Head, Poultry and Specialty Commodities Section (202) 720-3570

 David Colwell - Cold Storage (202) 720-8784

 John Lange - Turkeys (202) 720-0585

 Sharyn Lavender - Chickens and Eggs (202) 720-3244

 Jody Roberts - Broilers (202) 690-8632

ACCESS TO REPORTS!!

For your convenience, there are several ways to obtain NASS reports, data products, and services:

INTERNET ACCESS

All NASS reports are available free of charge on the worldwide Internet. For access, connect to the Internet and go to the NASS Home Page at: www.nass.usda.gov.

E-MAIL SUBSCRIPTION

All NASS reports are available by subscription free of charge direct to your e-mail address. Starting with the NASS Home Page at www.nass.usda.gov, under the right navigation, *Receive reports by Email*, click on **National** or **State**. Follow the instructions on the screen.

PRINTED REPORTS OR DATA PRODUCTS

CALL OUR TOLL-FREE ORDER DESK: 800-999-6779 (U.S. and Canada)
Other areas, please call 703-605-6220 FAX: 703-605-6900
(Visa, MasterCard, check, or money order acceptable for payment.)

ASSISTANCE

For **assistance** with general agricultural statistics or further information about NASS or its products or services, contact the **Agricultural Statistics Hotline** at **800-727-9540**, 7:30 a.m. to 4:00 p.m. ET, or e-mail: nass@nass.usda.gov.

The U.S. Department of Agriculture (USDA) prohibits discrimination in all its programs and activities on the basis of race, color, national origin, age, disability, and where applicable, sex, marital status, familial status, parental status, religion, sexual orientation, genetic information, political beliefs, reprisal, or because all or part of an individual's income is derived from any public assistance program. (Not all prohibited bases apply to all programs.) Persons with disabilities who require alternative means for communication of program information (Braille, large print, audiotape, etc.) should contact USDA's TARGET Center at (202) 720-2600 (voice and TDD).

To file a complaint of discrimination, write to USDA, Director, Office of Civil Rights, 1400 Independence Avenue, S.W., Washington, D.C. 20250-9410, or call (800) 795-3272 (voice) or (202) 720-6382 (TDD). USDA is an equal opportunity provider and employer.