



NASS

FACT FINDERS FOR AGRICULTURE
UNITED STATES DEPARTMENT OF AGRICULTURE

Washington, D.C.

Chickens And Eggs

Released June 23, 2006, by the National Agricultural Statistics Service (NASS), Agricultural Statistics Board, U.S. Department of Agriculture. For information on "Layers and Eggs" call Sharyn Lavender at (202) 720-3244, for "Chicks Hatched" call Jody Roberts at (202) 690-8632, office hours 7:30 a.m. to 4:00 p.m. ET.

May Egg Production Up 1 Percent

U.S. egg production totaled 7.63 billion during May 2006, up 1 percent from last year. Production included 6.52 billion table eggs, and 1.11 billion hatching eggs, of which 1.04 billion were broiler-type and 70 million were egg-type. The number of layers during May 2006 averaged 345 million, up 1 percent from last year. May egg production per 100 layers was 2,213 eggs, down slightly from May 2005.

All layers in the U.S. on June 1, 2006, totaled 343 million, up 1 percent from last year. The 343 million layers consisted of 286 million layers producing table-type eggs, 54.7 million layers producing broiler-type hatching eggs, and 2.84 million layers producing egg-type hatching eggs. Rate of lay per day on June 1, 2006, averaged 71.2 eggs per 100 layers, down slightly from June 1, 2005.

Egg-Type Chicks Hatched Up 4 Percent

Egg-type chicks hatched during May 2006 totaled 40.3 million, up 4 percent from May 2005. Eggs in incubators totaled 37.4 million on June 1, 2006, up 10 percent from a year ago.

Domestic placements of egg-type pullet chicks for future hatchery supply flocks by leading breeders totaled 241,000 during May 2006, up 27 percent from May 2005.

Broiler-Type Chicks Hatched Down 2 Percent

Broiler-type chicks hatched during May 2006 totaled 811 million, down 2 percent from May 2005. Eggs in incubators totaled 661 million on June 1, 2006, down 1 percent from a year earlier.

Leading breeders placed 7.53 million broiler-type pullet chicks for future domestic hatchery supply flocks during May 2006, down 3 percent from May 2005.

Contents

Page

U.S. Average Number of Layers on Hand and Egg Production	1
U.S. Layers on Hand and Eggs Produced by Type, Forced Molt, and Pullets	3
Layers on Hand and Eggs Produced by State	5
Egg Production by Type and State	7
Forced Molt	9
Egg-Type Hatchery	11
Egg-Type Intended Placements	13
Broiler-Type Hatchery	13
Broiler-Type Intended Placements	15
Procedures and Reliability	16
Information Contacts	16

**All Layers: Average Number on Hand During the Month,
United States, 2004-06**

Month	2004	2005	2006
	<i>1,000 Layers</i>	<i>1,000 Layers</i>	<i>1,000 Layers</i>
Dec ¹	339,305	345,618	348,545
Jan	337,948	347,864	349,246
Feb	338,905	348,791	349,764
Mar	340,699	346,959	350,088
Apr	341,550	343,574	348,154
May	341,562	341,819	344,735
Jun	342,513	339,856	
Jul	343,180	338,573	
Aug	343,653	339,351	
Sep	344,452	340,914	
Oct	345,075	342,823	
Nov	344,633	345,874	

¹ December preceding year.

**Eggs: Production During the Month by Type,
United States, 2005-06 ¹**

Month	Total Eggs		Table Eggs		Hatching Eggs	
	2005	2006	2005	2006	2005	2006
	<i>Million Eggs</i>	<i>Million Eggs</i>	<i>Million Eggs</i>	<i>Million Eggs</i>	<i>Million Eggs</i>	<i>Million Eggs</i>
Dec ²	7,721	7,791	6,636	6,703	1,086	1,088
Jan	7,626	7,721	6,526	6,624	1,101	1,097
Feb	6,928	6,977	5,915	5,988	1,014	989
Mar	7,738	7,837	6,610	6,735	1,129	1,103
Apr	7,407	7,535	6,311	6,469	1,097	1,066
May	7,572	7,628	6,439	6,521	1,133	1,107
Jun	7,346		6,250		1,096	
Jul	7,563		6,444		1,120	
Aug	7,528		6,425		1,104	
Sep	7,348		6,279		1,070	
Oct	7,665		6,561		1,104	
Nov	7,514		6,459		1,055	
During Year	89,960		76,859		13,103	

¹ Totals may not add due to rounding.

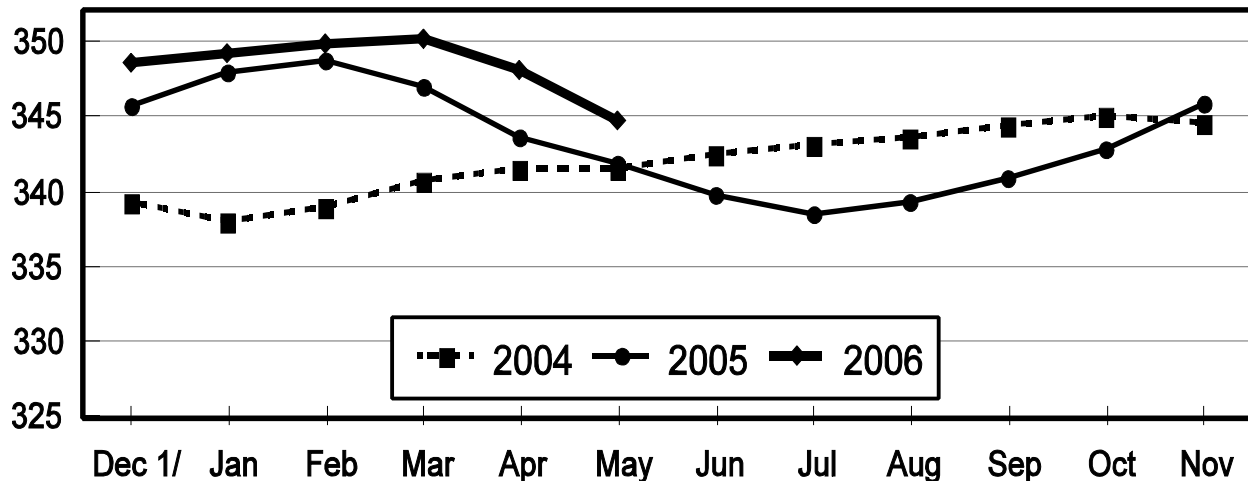
² December preceding year.

Average Number of Layers

United States, 2004 - 2006

During the Month

Million Layers



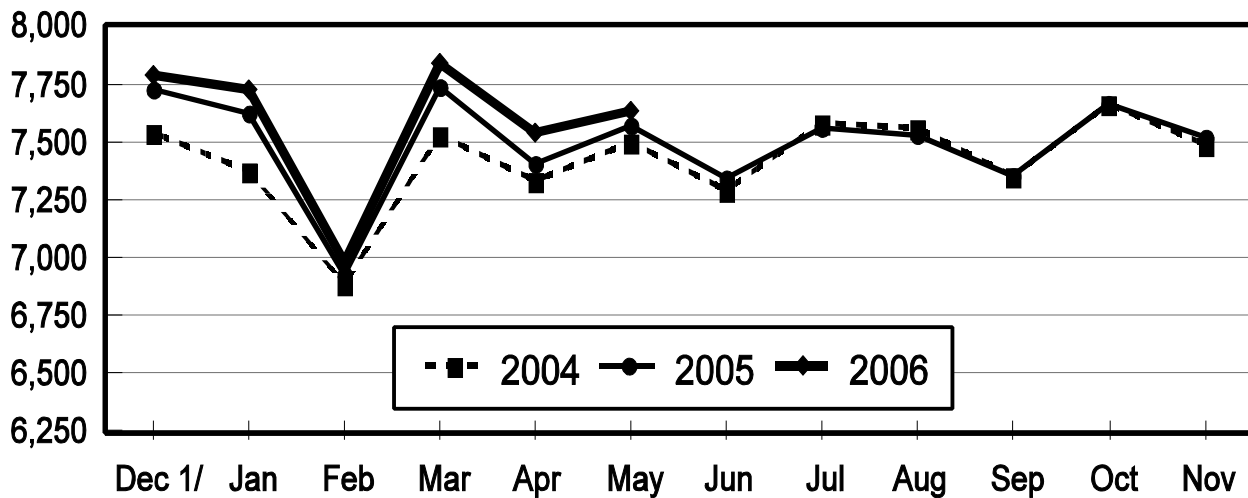
1/ Previous Year

All Egg Production

United States, 2004 - 2006

During the Month

Million Eggs



1/ Previous Year

**Layers and Eggs: Layers on Hand and Eggs Produced by Type,
and Forced Molt, United States, April-May 2005-06 ¹**

Item	Unit	2005	2006 ²	2006 as % of 2005
Layers During Apr	1,000			
All Layers		343,574	348,154	101
Table Egg Type		283,804	289,956	102
Hatching Egg Type		59,770	58,198	97
Broiler-Type Hatching		57,094	55,350	97
Egg-Type Hatching		2,676	2,848	106
Eggs per 100 Layers During Apr	Number			
All Layers		2,156	2,164	100
Table Egg Type		2,224	2,231	100
Hatching Egg Type		1,835	1,832	100
Broiler-Type Hatching		1,809	1,803	100
Egg-Type Hatching		2,392	2,388	100
Eggs Produced During Apr	Million			
All Layers		7,407	7,535	102
Table Egg Type		6,311	6,469	103
Hatching Egg Type		1,097	1,066	97
Broiler-Type Hatching		1,033	998	97
Egg-Type Hatching		64	68	106
Layers on May 1	1,000			
All Layers		342,346	346,308	101
Table Egg Type		282,418	288,108	102
Hatching Egg Type		59,928	58,200	97
Broiler-Type Hatching		57,238	55,345	97
Egg-Type Hatching		2,690	2,855	106
Eggs per 100 Layers on May 1	Number			
All Layers		71.6	71.5	100
Table Egg Type		73.8	73.5	100
Hatching Egg Type		61.1	61.5	101
Broiler-Type Hatching		60.2	60.6	101
Egg-Type Hatching		80.0	79.2	99
Forced Molt Layers on May 1	Percent			
Percent Being Molted		4.0	5.4	135
Percent with Molt Completed		22.4	23.6	105
Layers Sold for Slaughter During Apr	1,000	14,651	14,758	101
Layers Rendered, Died, Destroyed, Composted or Disappeared For Any Reason During Apr	1,000	8,132	9,638	119
Pullets on May 1	1,000	103,927	99,115	95
Pullets Added During Apr ³	1,000	24,151	20,428	85

¹ Totals may not add due to rounding.

² Revised.

³ Pullet chicks less than 3 days old added to pullet flocks.

**Layers and Eggs: Layers on Hand and Eggs Produced by Type,
and Forced Molt, United States, May-June 2005-06 ¹**

Item	Unit	2005	2006	2006 as % of 2005
Layers During May	1,000			
All Layers		341,819	344,735	101
Table Egg Type		282,111	286,837	102
Hatching Egg Type		59,708	57,898	97
Broiler-Type Hatching		56,996	55,049	97
Egg-Type Hatching		2,712	2,849	105
Eggs per 100 Layers During May	Number			
All Layers		2,215	2,213	100
Table Egg Type		2,282	2,273	100
Hatching Egg Type		1,898	1,912	101
Broiler-Type Hatching		1,872	1,884	101
Egg-Type Hatching		2,434	2,457	101
Eggs Produced During May	Million			
All Layers		7,572	7,628	101
Table Egg Type		6,439	6,521	101
Hatching Egg Type		1,133	1,107	98
Broiler-Type Hatching		1,067	1,037	97
Egg-Type Hatching		66	70	106
Layers on Jun 1	1,000			
All Layers		341,247	343,122	101
Table Egg Type		281,786	285,544	101
Hatching Egg Type		59,461	57,578	97
Broiler-Type Hatching		56,737	54,741	96
Egg-Type Hatching		2,724	2,837	104
Eggs per 100 Layers on Jun 1	Number			
All Layers		71.3	71.2	100
Table Egg Type		73.4	73.1	100
Hatching Egg Type		61.5	61.4	100
Broiler-Type Hatching		60.8	60.5	100
Egg-Type Hatching		77.2	79.0	102
Forced Molt Layers on Jun 1	Percent			
Percent Being Molted		4.2	4.6	110
Percent with Molt Completed		23.0	24.7	107
Layers Sold for Slaughter During May	1,000	15,664	14,239	91
Layers Rendered, Died, Destroyed, Composted or Disappeared For Any Reason During May	1,000	7,240	9,923	137
Pullets on Jun 1	1,000	103,378	100,632	97
Pullets Added During May ²	1,000	25,002	23,556	94

¹ Totals may not add due to rounding.

² Pullet chicks less than 3 days old added to pullet flocks.

**Layers and Eggs: Layers on Hand and Eggs Produced by State
and United States, During April 2005-06**

State	Table Egg Layers in Flocks 30,000 and Above		All Layers ¹		Eggs per 100 for All Layers ¹	
	2005	2006 ²	2005	2006 ²	2005	2006 ²
	<i>1,000</i>	<i>1,000</i>	<i>1,000</i>	<i>1,000</i>	<i>Number</i>	<i>Number</i>
AL	1,625	1,691	8,999	8,917	1,867	1,828
AR	3,964	4,402	14,560	14,558	1,902	1,868
CA	18,869	19,373	19,444	19,860	2,155	2,100
CO	3,246	3,169	3,753	3,635	2,371	2,366
CT	3,095	2,814	3,155	2,865	2,187	2,339
FL	10,335	10,707	10,839	11,111	2,325	2,232
GA	10,318	10,025	19,656	19,326	2,015	2,018
HI	471	445	504	461	1,865	1,800
IL	3,985	4,470	4,217	4,699	2,276	2,192
IN	22,914	23,945	23,635	24,637	2,171	2,232
IA	48,300	51,622	49,038	52,425	2,249	2,209
ME	4,197	3,960	4,258	4,033	2,114	2,157
MD	2,821	2,447	2,926	2,587	2,153	2,242
MI	7,690	7,929	7,954	8,192	2,213	2,356
MN	10,403	10,626	10,954	11,113	2,227	2,205
MS	1,682	1,654	7,259	6,494	1,901	1,971
MO	6,012	6,004	7,328	7,157	2,197	2,208
NE	11,943	11,698	12,018	11,773	2,188	2,183
NY	3,664	3,788	3,992	4,042	2,405	2,301
NC	3,350	3,332	11,136	11,060	1,904	1,989
OH	27,494	27,899	27,978	28,423	2,234	2,213
OR	2,786	2,516	2,974	2,700	2,286	2,259
PA	22,142	22,060	23,943	23,947	2,301	2,313
SC	3,863	3,857	4,955	5,103	2,018	2,038
SD	2,724	3,121	2,824	3,221	2,089	2,204
TX	12,919	14,458	17,405	18,950	2,126	2,206
VA	1,425	1,434	3,462	3,337	1,849	2,038
WA	4,853	4,830	4,921	4,898	2,235	2,123
WI	4,127	4,124	4,627	4,651	2,226	2,322
Oth Sts ³	16,650	15,772	24,860	23,979	2,104	2,156
US	277,867	284,172	343,574	348,154	2,156	2,164

¹ Includes all layers and eggs produced in both table egg and hatching egg flocks regardless of size.

² Revised.

³ Not published separately to avoid disclosing data for individual operations.

**Layers and Eggs: Layers on Hand and Eggs Produced by State
and United States, During May 2005-06**

State	Table Egg Layers in Flocks 30,000 and Above		All Layers ¹		Eggs per 100 for All Layers ¹	
	2005	2006	2005	2006	2005	2006
	<i>1,000</i>	<i>1,000</i>	<i>1,000</i>	<i>1,000</i>	<i>Number</i>	<i>Number</i>
AL	1,691	1,574	9,069	8,863	1,919	1,884
AR	3,927	4,217	14,656	14,266	1,917	1,949
CA	18,421	18,923	18,920	19,447	2,225	2,108
CO	3,220	3,284	3,761	3,791	2,393	2,400
CT	3,079	2,637	3,138	2,689	2,326	2,343
FL	10,402	10,380	10,880	10,751	2,335	2,297
GA	9,871	9,892	19,180	19,121	2,070	2,081
HI	454	430	486	446	1,934	1,861
IL	4,064	4,524	4,292	4,758	2,400	2,207
IN	22,670	23,938	23,413	24,644	2,247	2,252
IA	48,300	50,968	49,063	51,747	2,211	2,232
ME	4,118	3,970	4,183	4,040	2,128	2,178
MD	2,832	2,556	2,952	2,698	2,134	2,335
MI	7,757	8,026	8,018	8,288	2,345	2,401
MN	10,413	10,527	10,961	11,038	2,317	2,265
MS	1,651	1,652	7,225	6,542	1,979	2,018
MO	6,002	5,991	7,345	7,140	2,301	2,269
NE	11,854	11,523	11,929	11,598	2,322	2,225
NY	3,789	3,778	4,117	4,028	2,453	2,408
NC	3,270	3,180	11,008	10,877	2,008	2,078
OH	27,532	27,851	28,010	28,368	2,292	2,245
OR	2,797	2,541	2,984	2,736	2,413	2,376
PA	21,612	21,986	23,418	23,914	2,387	2,392
SC	3,735	3,962	4,917	5,179	2,034	2,066
SD	2,821	3,058	2,921	3,158	2,191	2,280
TX	12,803	13,990	17,224	18,365	2,218	2,265
VA	1,420	1,342	3,336	3,174	2,128	2,111
WA	4,910	4,792	4,978	4,860	2,370	2,263
WI	4,220	4,119	4,720	4,631	2,225	2,332
Oth Sts ²	16,540	15,442	24,715	23,578	2,189	2,214
US	276,175	281,053	341,819	344,735	2,215	2,213

¹ Includes all layers and eggs produced in both table egg and hatching egg flocks regardless of size.

² Not published separately to avoid disclosing data for individual operations.

**Egg Production: By Type, State, and United States,
April 2005-06 ¹**

State	Total Production		Table Eggs ²		Hatching Eggs ²	
	2005	2006 ³	2005	2006 ³	2005	2006 ³
	<i>Million Eggs</i>	<i>Million Eggs</i>	<i>Million Eggs</i>	<i>Million Eggs</i>	<i>Million Eggs</i>	<i>Million Eggs</i>
AL	168	163	35	34	133	129
AR	277	272	88	99	189	173
CA	419	417				
CO	89	86				
CT	69	67				
FL	252	248	244	240	8	8
GA	396	390	222	219	174	171
HI	9.4	8.3	9.4	8.3	0	0
IL	96	103	93	100	3	3
IN	513	550	501	538	12	12
IA	1,103	1,158				
ME	90	87				
MD	63	58	62	57	1	1
MI	176	193				
MN	244	245	236	237	8	8
MS	138	128	36	39	102	89
MO	161	158				
NE	263	257	263	257	0	0
NY	96	93				
NC	212	220	77	83	135	137
OH	625	629				
OR	68	61	66	59	2	2
PA	551	554	533	534	18	20
SC	100	104	82	85	18	19
SD	59	71	59	71	0	0
TX	370	418				
VA	64	68	28	34	36	34
WA	110	104				
WI	103	108				
Oth Sts ⁴	523	517	397	391	127	126
US	7,407	7,535	6,311	6,469	1,097	1,066

¹ Totals may not add due to rounding.

² Data by type of flock not shown for some States to avoid disclosing individual operations, data included in US totals.

³ Revised.

⁴ Not published separately to avoid disclosing data for individual operations.

**Egg Production: By Type, State, and United States,
May 2005-06 ¹**

State	Total Production		Table Eggs ²		Hatching Eggs ²	
	2005	2006	2005	2006	2005	2006
	<i>Million Eggs</i>	<i>Million Eggs</i>	<i>Million Eggs</i>	<i>Million Eggs</i>	<i>Million Eggs</i>	<i>Million Eggs</i>
AL	174	167	35	33	139	134
AR	281	278	87	95	194	183
CA	421	410				
CO	90	91				
CT	73	63				
FL	254	247	246	241	8	6
GA	397	398	218	221	179	177
HI	9.4	8.3	9.4	8.3	0	0
IL	103	105	99	101	4	4
IN	526	555	513	542	13	13
IA	1,085	1,155				
ME	89	88				
MD	63	63	61	61	2	2
MI	188	199				
MN	254	250	246	241	8	9
MS	143	132	38	38	105	94
MO	169	162				
NE	277	258	277	258	0	0
NY	101	97				
NC	221	226	79	84	142	142
OH	642	637				
OR	72	65	70	63	2	2
PA	559	572	541	550	18	22
SC	100	107	80	87	20	20
SD	64	72	64	72	0	0
TX	382	416				
VA	71	67	36	33	35	34
WA	118	110				
WI	105	108				
Oth Sts ³	541	522	411	393	130	129
US	7,572	7,628	6,439	6,521	1,133	1,107

¹ Totals may not add due to rounding.

² Data by type of flock not shown for some States to avoid disclosing individual operations, data included in US totals.

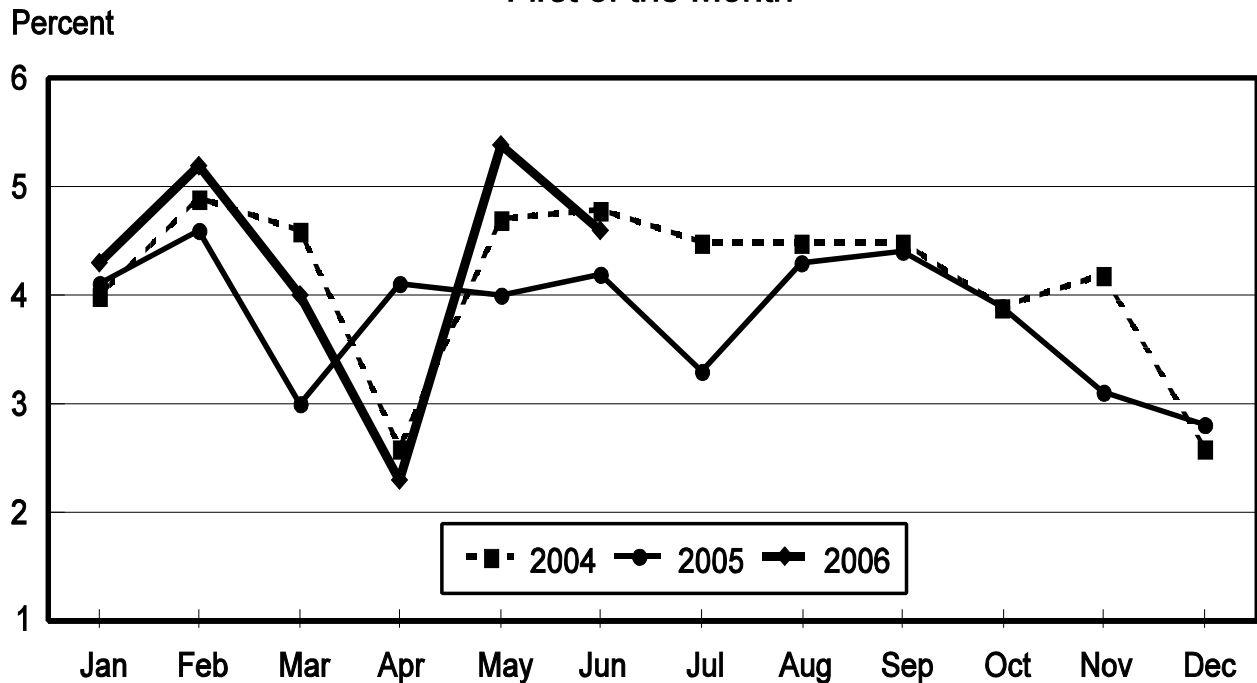
³ Not published separately to avoid disclosing data for individual operations.

**Forced Molt: Percent of All Layers by Month,
United States, 2005-06¹**

Month	Percent Being Molted		Percent with Molt Completed	
	2005	2006	2005	2006
	<i>Percent</i>	<i>Percent</i>	<i>Percent</i>	<i>Percent</i>
Jan	4.1	4.3	23.2	23.0
Feb	4.6	5.2	21.7	23.8
Mar	3.0	4.0	22.8	24.4
Apr	4.1	2.3	22.7	24.9
May	4.0	5.4	22.4	23.6
Jun	4.2	4.6	23.0	24.7
Jul	3.3		22.6	
Aug	4.3		22.1	
Sep	4.4		22.4	
Oct	3.9		23.4	
Nov	3.1		24.3	
Dec	2.8		23.7	

¹ As of first of month.

All Layers: Percent Being Molted United States, 2004 - 2006 First of the Month



**Forced Molt: Percent of All Layers by State
and United States, June 2005-06¹**

State	Percent Being Molted		Percent with Molt Completed	
	2005	2006	2005	2006
	<i>Percent</i>	<i>Percent</i>	<i>Percent</i>	<i>Percent</i>
AL	2.5	1.0	2.5	4.0
AR	2.5	0.0	7.0	10.0
CA	6.0	13.5	34.5	37.0
CO	9.5	0.0	20.0	24.5
CT	0.0	8.5	9.3	14.5
FL	7.5	4.0	23.5	36.0
GA	2.5	6.0	15.0	10.5
HI	6.0	5.5	49.0	56.5
IL	8.5	7.0	26.5	24.5
IN	3.5	3.5	30.5	28.0
IA	5.5	4.0	38.0	37.0
ME	0.0	0.0	0.0	0.0
MD	8.0	5.5	32.0	32.5
MI	6.5	8.0	34.5	21.0
MN	1.0	2.5	23.5	33.5
MS	2.0	2.0	9.0	11.0
MO	2.0	4.0	21.0	23.5
NE	7.0	8.5	27.0	28.5
NY	6.0	1.0	3.0	14.5
NC	1.0	0.5	9.0	10.5
OH	3.5	7.5	20.0	22.0
OR	4.0	14.0	32.0	26.0
PA	3.0	4.0	14.5	17.5
SC	8.0	5.5	22.5	30.0
SD	3.0	4.5	22.5	17.0
TX	2.0	1.5	20.5	26.0
VA	3.0	6.0	12.0	12.5
WA	5.0	9.0	34.5	50.0
WI	10.5	1.5	19.0	36.5
Oth Sts ²	5.6	2.9	24.6	23.1
US	4.2	4.6	23.0	24.7

¹ As of first of month.

² Not published separately to avoid disclosing data for individual operations.

**Hatchery Production: Eggs in Incubators, Chicks Hatched,
and Placements by Type, United States, May-June 2005-06**

Item	2005	2006	2006 as % of 2005
	<i>1,000</i>	<i>1,000</i>	<i>Percent</i>
Egg-Type			
Eggs in Incubators on Jun 1	34,064	37,384	110
Chicks Hatched During May	38,792	40,320	104
Chicks Hatched Jan thru May	191,260	182,938	96
Pullets Hatched During May for Intended Placements in Hatchery Supply Flocks 7-18 Months Earlier ¹	190 3,112	241 2,878	127 92
Broiler-Type			
Eggs in Incubators on Jun 1	668,018	660,638	99
Chicks Hatched During May	823,993	810,908	98
Chicks Hatched Jan thru May	3,962,332	3,952,258	100
Pullets Hatched During May for Intended Placements in Hatchery Supply Flocks 7-15 Months Earlier ²	7,783 63,220	7,531 64,311	97 102

¹ 2006 includes pullet chicks hatched Nov 2004 through Oct 2005.

² 2006 includes pullet chicks hatched Feb 2005 through Oct 2005.

**Egg-Type Eggs in Incubators: By Region and United States,
June 1, 2005-06**

Region	2005	2006	2006 as % of 2005
	<i>1,000</i>	<i>1,000</i>	<i>Percent</i>
North Atlantic	5,289	6,337	120
E North Central	6,681	7,240	108
W North Central	7,139	8,398	118
South Atlantic	3,589	4,764	133
South Central	5,272	6,409	122
West	6,094	4,236	70
US	34,064	37,384	110

Regions:

North Atlantic = CT, ME, MA, NH, NJ, NY, PA, RI, VT.

E North Central = IL, IN, MI, OH, WI.

W North Central = IA, KS, MN, MO, NE, ND, SD.

South Atlantic = DE, FL, GA, MD, NC, SC, VA, WV.

South Central = AL, AR, KY, LA, MS, OK, TN, TX.

West = AK, AZ, CA, CO, HI, ID, MT, NM, NV, OR, UT, WA, WY.

**Egg-Type Chicks Hatched: By State and United States,
May 2005-06**

State	During May			Jan-May		
	2005	2006	2006 as % of 2005	2005	2006	2006 as % of 2005
	<i>1,000</i>	<i>1,000</i>	<i>Percent</i>	<i>1,000</i>	<i>1,000</i>	<i>Percent</i>
GA	2,315	2,326	100	11,499	11,523	100
IN	5,718	4,844	85	25,461	24,188	95
IA	6,825	7,619	112	32,450	34,054	105
MN	1,126	979	87	5,158	4,974	96
PA	4,493	4,617	103	24,898	21,877	88
Oth Sts ¹	18,315	19,935	109	91,794	86,322	94
US	38,792	40,320	104	191,260	182,938	96

¹ Not published separately to avoid disclosing data for individual operations.

Egg-Type Chicks Hatched: By Month, United States, 2005-06

Month	By Months			Cumulative		
	2005	2006	2006 as % of 2005	2005	2006	2006 as % of 2005
	<i>1,000</i>	<i>1,000</i>	<i>Percent</i>	<i>1,000</i>	<i>1,000</i>	<i>Percent</i>
Jan	38,291	35,422	93	38,921	35,422	93
Feb	34,427	33,665	98	72,718	69,087	95
Mar	41,701	38,918	93	114,419	108,005	94
Apr	38,049	34,613	91	152,468	142,618	94
May	38,792	40,320	104	191,260	182,938	96
Jun	35,034			226,294		
Jul	34,897			261,191		
Aug	38,700			299,891		
Sep	33,623			333,514		
Oct	35,461			368,975		
Nov	32,285			401,260		
Dec	35,917			437,177		

**Intended Placements: Egg-Type Pullet Chicks for Hatchery Supply
Flocks by Month and Total, United States, 2005-06¹**

Month	Pullet Chicks Hatched		2006 as % of 2005	Cumulative Potential Plcmts Relative to Current Supply Flocks 7-18 Months Earlier ²	
	2005	2006		2005	2006
	<i>1,000</i>	<i>1,000</i>	<i>Percent</i>	<i>1,000</i>	<i>1,000</i>
Jan	157	188	120	3,088	2,837
Feb	208	196	94	3,092	2,845
Mar	314	286	91	3,222	2,788
Apr	308	255	83	3,154	2,958
May	190	241	127	3,112	2,878
Jun	175			3,018	2,833
Jul	242			3,007	2,845
Aug	261			3,040	2,876
Sep	375			2,963	2,864
Oct	188			2,876	2,836
Nov	180			2,841	2,783
Dec	247			2,874	2,834
Total	2,845				

¹ Reported by leading breeders. Coverage may not be 100 percent. Includes expected pullet chicks rom eggs sold during the preceding month at the rate of 125 pullet chicks per 30 dozen case of eggs.

² For May 2006, includes breeder pullet chicks hatched Nov 2004 through Oct 2005. The 7-18 months represent the first laying cycle. Molting and additional laying cycles will increase the cumulative potential placements.

**Broiler-Type Eggs in Incubators: By Region
and United States, June 1, 2005-06**

Region	2005	2006	2006 as % of 2005
	<i>1,000</i>	<i>1,000</i>	<i>Percent</i>
North Atlantic	12,136	12,186	100
E North Central	8,941	9,351	105
W North Central	24,925	24,692	99
South Atlantic	241,799	243,497	101
South Central	354,446	345,700	98
West	25,771	25,212	98
US	668,018	660,638	99

**Broiler-Type Chicks Hatched: By State
and United States, May 2005-06**

State	During May			Jan-May		
	2005	2006	2006 as % of 2005	2005	2006	2006 as % of 2005
	<i>1,000</i>	<i>1,000</i>	<i>Percent</i>	<i>1,000</i>	<i>1,000</i>	<i>Percent</i>
AL	116,314	115,159	99	549,775	564,894	103
AR	115,852	111,205	96	561,372	552,426	98
DE	14,803	13,342	90	71,928	69,090	96
FL	4,948	5,113	103	24,057	24,609	102
GA	123,890	127,663	103	600,634	613,370	102
KY	26,782	26,878	100	127,767	127,046	99
LA	15,182	14,893	98	73,161	73,421	100
MD	32,634	31,778	97	155,831	155,707	100
MS	70,896	67,775	96	355,074	334,119	94
NC	69,619	69,596	100	332,385	335,997	101
OK	24,437	23,478	96	117,133	115,437	99
PA	15,008	14,626	97	71,364	70,154	98
SC	18,780	19,067	102	90,437	92,456	102
TX	58,066	55,246	95	274,714	273,609	100
VA	24,321	23,997	99	117,003	116,247	99
CA, MO, TN, & WV	68,035	66,437	98	326,517	321,468	98
19 Sts ¹	799,567	786,253	98	3,849,152	3,840,050	100
Oth Sts ²	24,426	24,655	101	113,180	112,208	99
US	823,993	810,908	98	3,962,332	3,952,258	100

¹ States in the weekly hatchery production estimating program.

² Not published separately to avoid disclosing data for individual operations.

Broiler-Type Chicks Hatched: By Month, United States, 2005-06

Month	By Months			Cumulative		
	2005	2006	2006 as % of 2005	2005	2006	2006 as % of 2005
	<i>1,000</i>	<i>1,000</i>	<i>Percent</i>	<i>1,000</i>	<i>1,000</i>	<i>Percent</i>
Jan	797,576	804,073	101	797,576	804,073	101
Feb	732,038	733,145	100	1,529,614	1,537,218	101
Mar	816,552	817,068	100	2,346,166	2,354,286	100
Apr	792,173	787,064	99	3,138,339	3,141,350	100
May	823,993	810,908	98	3,962,332	3,952,258	100
Jun	796,945			4,759,277		
Jul	808,382			5,567,659		
Aug	812,474			6,380,133		
Sep	771,146			7,151,279		
Oct	776,449			7,927,728		
Nov	747,866			8,675,594		
Dec	808,525			9,484,119		

**Intended Placements: Broiler-Type Pullet Chicks for Hatchery
Supply Flocks by Month and Total, 2005-06 ¹**

Month	Pullet Chicks Hatched		2006 as % of 2005	Cumulative Potential Plcmts Relative to Current Supply Flocks 7-15 Months Earlier ²	
	2005	2006		2005	2006
	<i>1,000</i>	<i>1,000</i>	<i>Percent</i>	<i>1,000</i>	<i>1,000</i>
US Place- ments					
Jan	6,409	6,825	106	62,084	62,860
Feb	7,325	7,593	104	62,460	63,060
Mar	7,077	7,012	99	62,794	63,416
Apr	6,800	6,593	97	63,574	63,776
May	7,783	7,531	97	63,220	64,311
Jun	7,109			63,008	64,284
Jul	6,657			62,965	64,319
Aug	7,484			62,972	64,344
Sep	7,132			62,707	64,154
Oct	6,944			62,894	64,057
Nov	7,298			63,006	63,993
Dec	7,112			63,509	64,040
Annual Total	85,130				
Total Place- ments ³					
Jan	7,804	8,018	103		
Feb	8,664	9,026	104		
Mar	8,709	8,415	97		
Apr	7,995	7,558	95		
May	8,995	8,930	99		
Jun	8,571				
Jul	7,846				
Aug	9,084				
Sep	8,683				
Oct	8,279				
Nov	8,830				
Dec	8,256				
Annual Total	101,716				

¹ Reported by leading breeders. Coverage may not be 100 percent. Includes expected pullet chicks from eggs sold during the preceding month at the rate of 125 pullet chicks per 30 dozen case of eggs.

² For May 2006, includes breeder pullet chicks hatched Feb 2005 through Oct 2005.

³ U.S. production of intended placements worldwide.

Procedures and Reliability

Data Sources: Primary data for the "**Chickens and Eggs**" report are from weekly and/or monthly questionnaires sent to producers. An attempt is made to collect information for layer and egg estimates from each known contractor and independent producer who has at least 30,000 table egg layers, flocks of hatchery supply layers, or pullet only operations with at least 500 pullets. Coverage for operations with less than 30,000 table egg layers are estimated each month based on data reported in December. Approximately 650 contractors, independent egg producers, and pullet only operations are contacted each month. All known hatcheries, approximately 330, are contacted for information on a weekly and/or monthly basis.

Revisions: The previous month's estimates are subject to revision if late reports or corrected data indicates a different level. Additionally, revisions after the monthly report will be made at the end of the marketing year and published in the annual reports of "**Chickens and Eggs Summary**" and "**Hatchery Production**".

Procedures and Reliability: Operations are mailed a questionnaire and given adequate time to respond by mail. Those that do not respond are phoned. Great care is exercised to ensure that all operations are accounted for during each survey period. However, there are usually missing reports that must be accounted for in the estimates.

Sound statistical methodology is employed to derive estimates from the reported data. All data are checked for unusual values. All operations' data are compared to their own past operating profiles and also to trends from other operations. Data for missing operations are estimated based on similar operations or historical data. Survey data are subject to non-sampling errors such as omissions and mistakes in reporting and in processing. While these errors cannot be measured directly, they are minimized by reviewing all data for consistency and reasonableness.

Egg-type chicks hatched consist of all chicks of egg-type domesticated breeds including males and chicks destined for hatchery supply flocks and research purposes. The relationship of chicks hatched to chicken inventory and poultry marketings is carefully monitored. The disposition of egg-type chicks hatched prior to placement into the laying flock can vary significantly, which can make comparisons to changes in layer inventory inconsistent over time.

Intended placement data reported by leading breeders include pullet chicks expected from eggs sold the preceding month. The breeders in this report account for a large percentage of replacement pullets for hatchery supply flocks. Production of replacement pullets by these breeders indicates the number of pullets available to hatchery supply flocks several months before the pullets will actually move into the flocks. "Hatchery Supply Flocks" include all generations of layers which could lay eggs to supply a hatchery. This includes the generations of parents, grandparents, great-grandparents, pedigree, etc. Also included are research flocks, vaccine flocks, and specific pathogen-free flocks. The broiler cumulative potential placements are a moving total of the intended placements 7-15 months earlier. The egg-type cumulative potential placements of 7-18 months represent the first laying cycle. Molting and additional laying cycles will increase the cumulative potential placements of egg-type hatching flocks.

Information Contacts

Listed below are the commodity specialists in the Livestock Branch of the National Agricultural Statistics Service to contact for additional information.

Dan Kerestes, Chief, Livestock Branch	(202) 720-3570
Darin Jantzi, Head, Poultry and Specialty Commodities Section	(202) 720-3570
David Colwell - Cold Storage	(202) 720-8784
Fleming Gibson - Egg Products, Poultry Slaughter, Catfish Processing, Mink	(202) 690-3237
John Lange - Turkeys Raised, Turkey Hatchery, Catfish Production, Trout Production, Census of Aquaculture	(202) 720-0585
Sharyn Lavender - Layers, Eggs	(202) 720-3244
Jody Roberts - Broiler Hatchery, Chicken Hatchery, Honey	(202) 690-8632

ACCESS TO REPORTS!!

For your convenience, there are several ways to obtain NASS reports, data products, and services:

INTERNET ACCESS

All NASS reports are available free of charge on the worldwide Internet. For access, connect to the Internet and go to the NASS Home Page at: www.nass.usda.gov.

E-MAIL SUBSCRIPTION

All NASS reports are available by subscription free of charge direct to your e-mail address. Starting with the NASS Home Page at www.nass.usda.gov, under the right navigation, *Receive reports by Email*, click on **National** or **State**. Follow the instructions on the screen.

PRINTED REPORTS OR DATA PRODUCTS

CALL OUR TOLL-FREE ORDER DESK: 800-999-6779 (U.S. and Canada)
Other areas, please call 703-605-6220 FAX: 703-605-6900
(Visa, MasterCard, check, or money order acceptable for payment.)

ASSISTANCE

For **assistance** with general agricultural statistics or further information about NASS or its products or services, contact the **Agricultural Statistics Hotline** at **800-727-9540**, 7:30 a.m. to 4:00 p.m. ET, or e-mail: nass@nass.usda.gov.

The U.S. Department of Agriculture (USDA) prohibits discrimination in all its programs and activities on the basis of race, color, national origin, age, disability, and where applicable, sex, marital status, familial status, parental status, religion, sexual orientation, genetic information, political beliefs, reprisal, or because all or part of an individual's income is derived from any public assistance program. (Not all prohibited bases apply to all programs.) Persons with disabilities who require alternative means for communication of program information (Braille, large print, audiotape, etc.) should contact USDA's TARGET Center at (202) 720-2600 (voice and TDD).

To file a complaint of discrimination, write to USDA, Director, Office of Civil Rights, 1400 Independence Avenue, S.W., Washington, D.C. 20250-9410, or call (800) 795-3272 (voice) or (202) 720-6382 (TDD). USDA is an equal opportunity provider and employer.