



NASS

FACT FINDERS FOR AGRICULTURE
UNITED STATES DEPARTMENT OF AGRICULTURE

Washington, D.C.

Chickens And Eggs

Released August 22, 2006, by the National Agricultural Statistics Service (NASS), Agricultural Statistics Board, U.S. Department of Agriculture. For information on *Chickens and Eggs* call Sharyn Lavender at (202) 720-3244, office hours 7:30 a.m. to 4:00 p.m. ET.

July Egg Production Up 1 Percent

U.S. egg production totaled 7.64 billion during July 2006, up 1 percent from last year. Production included 6.56 billion table eggs, and 1.09 billion hatching eggs, of which 1.02 billion were broiler-type and 66 million were egg-type. The total number of layers during July 2006 averaged 341 million, up 1 percent from last year. July egg production per 100 layers was 2,241 eggs, up slightly from July 2005.

All layers in the U.S. on August 1, 2006, totaled 341 million, up 1 percent from last year. The 341 million layers consisted of 284 million layers producing table or market type eggs, 54.0 million layers producing broiler-type hatching eggs, and 2.76 million layers producing egg-type hatching eggs. Rate of lay per day on August 1, 2006, averaged 71.7 eggs per 100 layers, up 1 percent from August 1, 2005.

Egg-Type Chicks Hatched Down 5 Percent

Egg-type chicks hatched during July 2006 totaled 33.2 million, down 5 percent from July 2005. Eggs in incubators totaled 31.4 million on August 1, 2006, down 14 percent from a year ago.

Domestic placements of egg-type pullet chicks for future hatchery supply flocks by leading breeders totaled 320,000 during July 2006, up 32 percent from July 2005.

Broiler-Type Chicks Hatched Down 1 Percent

Broiler-type chicks hatched during July 2006 totaled 800 million, down 1 percent from July 2005. Eggs in incubators totaled 660 million on August 1, 2006, down 1 percent from a year earlier.

Leading breeders placed 6.46 million broiler-type pullet chicks for future domestic hatchery supply flocks during July 2006, down 3 percent from July 2005.

Contents

Page

U.S. Average Number of Layers on Hand and Egg Production	1
U.S. Layers on Hand and Eggs Produced by Type, Forced Molt, and Pullets	3
Layers on Hand and Eggs Produced by State	5
Egg Production by Type and State	7
Forced Molt	9
Egg-Type Hatchery	11
Egg-Type Intended Placements	13
Broiler-Type Hatchery	13
Broiler-Type Intended Placements	15
Procedures and Reliability	16
Information Contacts	16

**All Layers: Average Number on Hand During the Month,
United States, 2004-06**

Month	2004	2005	2006
	<i>1,000 Layers</i>	<i>1,000 Layers</i>	<i>1,000 Layers</i>
Dec ¹	339,305	345,618	348,545
Jan	337,948	347,864	349,246
Feb	338,905	348,791	349,764
Mar	340,699	346,959	350,088
Apr	341,550	343,574	348,154
May	341,562	341,819	344,718
Jun	342,513	339,856	342,175
Jul	343,180	338,573	341,047
Aug	343,653	339,351	
Sep	344,452	340,914	
Oct	345,075	342,823	
Nov	344,633	345,874	

¹ December preceding year.

**Eggs: Production During the Month by Type,
United States, 2005-06 ¹**

Month	Total Eggs		Table Eggs		Hatching Eggs	
	2005	2006	2005	2006	2005	2006
	<i>Million Eggs</i>	<i>Million Eggs</i>	<i>Million Eggs</i>	<i>Million Eggs</i>	<i>Million Eggs</i>	<i>Million Eggs</i>
Dec ²	7,721	7,791	6,636	6,703	1,086	1,088
Jan	7,626	7,721	6,526	6,624	1,101	1,097
Feb	6,928	6,977	5,915	5,988	1,014	989
Mar	7,738	7,837	6,610	6,735	1,129	1,103
Apr	7,407	7,535	6,311	6,469	1,097	1,066
May	7,572	7,627	6,439	6,520	1,133	1,107
Jun	7,346	7,393	6,250	6,338	1,096	1,056
Jul	7,563	7,643	6,444	6,558	1,120	1,085
Aug	7,528		6,425		1,104	
Sep	7,348		6,279		1,070	
Oct	7,665		6,561		1,104	
Nov	7,514		6,459		1,055	
During Year	89,960		76,859		13,103	

¹ Totals may not add due to rounding.

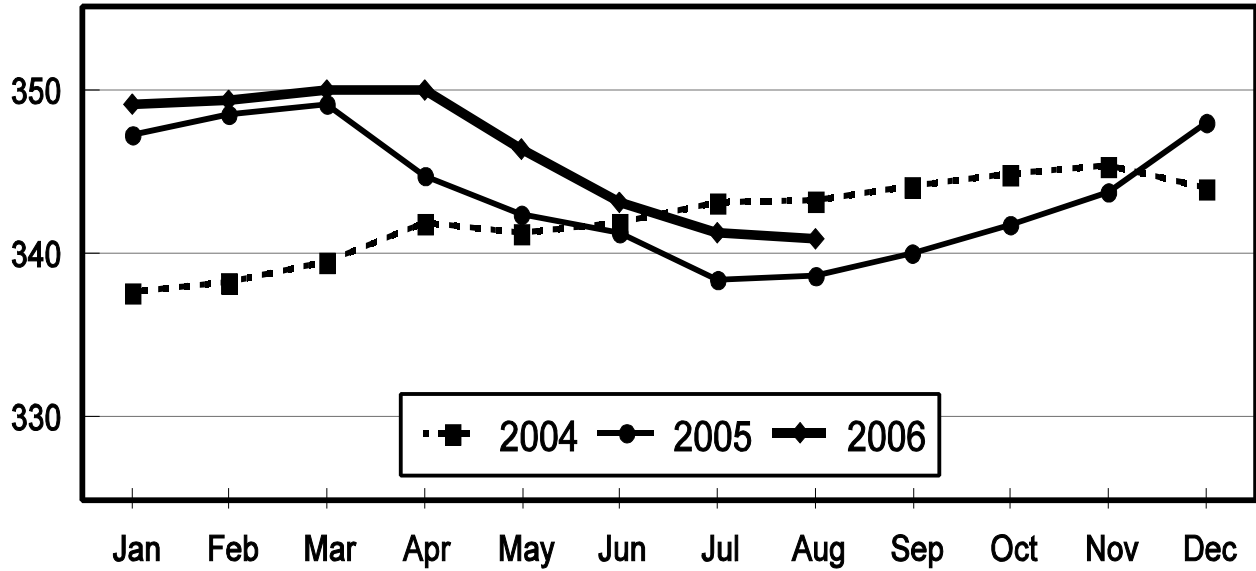
² December preceding year.

All Layers: Inventory

United States, 2004 - 2006

First of the Month

Million Layers

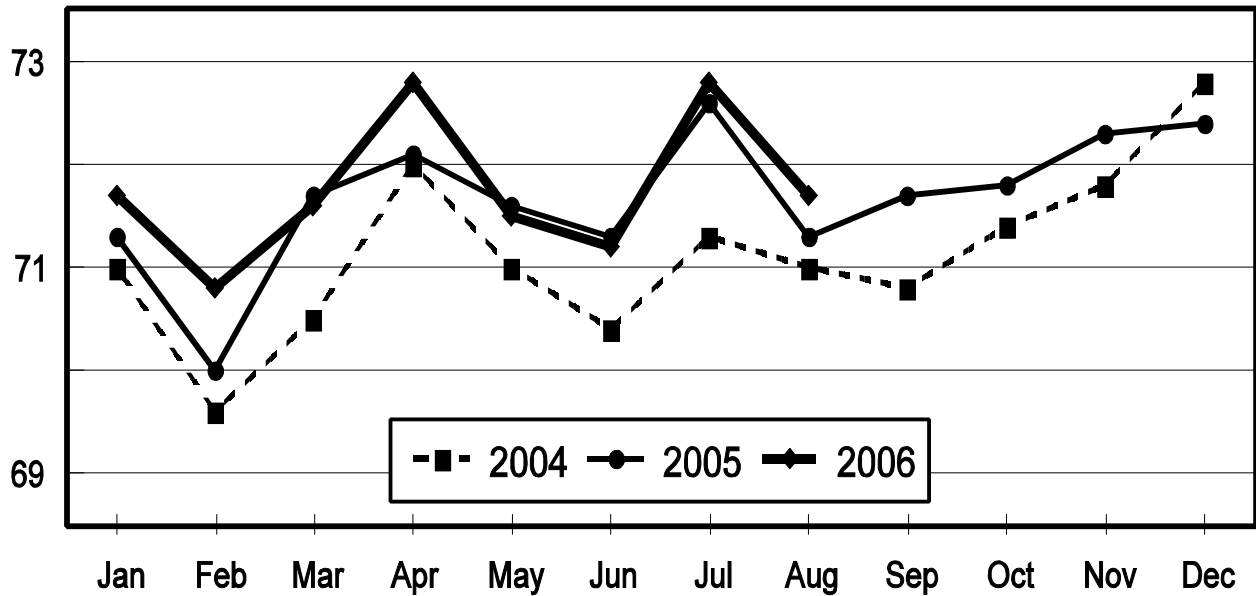


All Layers: Rate of Lay

United States, 2004 - 2006

First of the Month

Eggs Per 100 Layers



**Layers and Eggs: Layers on Hand and Eggs Produced by Type,
and Forced Molt, United States, June-July 2005-06¹**

Item	Unit	2005	2006 ²	2006 as % of 2005
Layers During Jun	1,000			
All Layers		339,856	342,175	101
Table Egg Type		280,795	284,951	101
Hatching Egg Type		59,061	57,224	97
Broiler-Type Hatching		56,382	54,393	96
Egg-Type Hatching		2,679	2,831	106
Eggs per 100 Layers During Jun	Number			
All Layers		2,162	2,161	100
Table Egg Type		2,226	2,224	100
Hatching Egg Type		1,856	1,845	99
Broiler-Type Hatching		1,834	1,820	99
Egg-Type Hatching		2,314	2,331	101
Eggs Produced During Jun	Million			
All Layers		7,346	7,393	101
Table Egg Type		6,250	6,338	101
Hatching Egg Type		1,096	1,056	96
Broiler-Type Hatching		1,034	990	96
Egg-Type Hatching		62	66	106
Layers on Jul 1	1,000			
All Layers		338,424	341,219	101
Table Egg Type		279,779	284,376	102
Hatching Egg Type		58,645	56,843	97
Broiler-Type Hatching		56,017	54,028	96
Egg-Type Hatching		2,628	2,815	107
Eggs per 100 Layers on Jul 1	Number			
All Layers		72.6	72.8	100
Table Egg Type		74.8	75.0	100
Hatching Egg Type		62.2	61.4	99
Broiler-Type Hatching		61.5	60.7	99
Egg-Type Hatching		77.2	75.3	98
Forced Molt Layers on Jul 1	Percent			
Percent Being Molted		3.3	3.5	106
Percent with Molt Completed		22.6	25.7	114
Layers Sold for Slaughter During Jun	1,000	16,027	13,441	84
Layers Rendered, Died, Destroyed, Composted or Disappeared For Any Reason During Jun	1,000	7,169	7,041	98
Pullets on Jul 1	1,000	102,764	101,228	99
Pullets Added During Jun ³	1,000	22,930	22,130	97

¹ Totals may not add due to rounding.

² Revised.

³ Pullet chicks less than 3 days old added to pullet flocks.

**Layers and Eggs: Layers on Hand and Eggs Produced by Type,
and Forced Molt, United States, July-August 2005-06 ¹**

Item	Unit	2005	2006	2006 as % of 2005
Layers During Jul	1,000			
All Layers		338,573	341,047	101
Table Egg Type		279,965	284,217	102
Hatching Egg Type		58,608	56,830	97
Broiler-Type Hatching		55,966	54,039	97
Egg-Type Hatching		2,642	2,791	106
Eggs per 100 Layers During Jul	Number			
All Layers		2,234	2,241	100
Table Egg Type		2,302	2,307	100
Hatching Egg Type		1,911	1,909	100
Broiler-Type Hatching		1,889	1,886	100
Egg-Type Hatching		2,385	2,365	99
Eggs Produced During Jul	Million			
All Layers		7,563	7,643	101
Table Egg Type		6,444	6,558	102
Hatching Egg Type		1,120	1,085	97
Broiler-Type Hatching		1,057	1,019	96
Egg-Type Hatching		63	66	105
Layers on Aug 1	1,000			
All Layers		338,674	340,831	101
Table Egg Type		280,125	284,041	101
Hatching Egg Type		58,549	56,790	97
Broiler-Type Hatching		55,902	54,034	97
Egg-Type Hatching		2,647	2,756	104
Eggs per 100 Layers on Aug 1	Number			
All Layers		71.3	71.7	101
Table Egg Type		73.5	73.8	100
Hatching Egg Type		60.9	61.3	101
Broiler-Type Hatching		60.3	60.6	100
Egg-Type Hatching		74.3	76.1	102
Forced Molt Layers on Aug 1	Percent			
Percent Being Molted		4.3	4.2	98
Percent with Molt Completed		22.1	25.3	114
Layers Sold for Slaughter During Jul	1,000	16,079	11,449	71
Layers Rendered, Died, Destroyed, Composted or Disappeared For Any Reason During Jul	1,000	5,967	8,874	149
Pullets on Aug 1	1,000	101,174	101,395	100
Pullets Added During Jul ²	1,000	23,043	21,441	93

¹ Totals may not add due to rounding.

² Pullet chicks less than 3 days old added to pullet flocks.

**Layers and Eggs: Layers on Hand and Eggs Produced by State
and United States, During June 2005-06**

State	Table Egg Layers in Flocks 30,000 and Above		All Layers ¹		Eggs per 100 for All Layers ¹	
	2005	2006 ²	2005	2006 ²	2005	2006 ²
	<i>1,000</i>	<i>1,000</i>	<i>1,000</i>	<i>1,000</i>	<i>Number</i>	<i>Number</i>
AL	1,798	1,476	9,191	8,722	1,882	1,857
AR	4,006	4,143	14,655	13,997	1,897	1,886
CA	18,305	18,477	18,801	18,997	2,170	2,053
CO	3,247	3,213	3,765	3,725	2,284	2,416
CT	3,050	2,639	3,108	2,695	2,284	2,152
FL	10,434	10,362	10,930	10,740	2,223	2,169
GA	9,829	9,431	19,072	18,582	2,040	2,018
HI	458	429	488	445	1,906	1,843
IL	4,302	4,612	4,532	4,849	2,273	2,207
IN	22,565	23,698	23,293	24,432	2,220	2,239
IA	47,229	50,615	47,989	51,354	2,159	2,187
ME	4,134	4,014	4,198	4,083	2,025	2,082
MD	2,818	2,564	2,939	2,702	2,178	2,332
MI	7,767	8,189	8,024	8,451	2,331	2,307
MN	10,310	10,548	10,838	11,041	2,251	2,201
MS	1,604	1,648	6,976	6,487	1,978	1,973
MO	5,917	6,116	7,270	7,256	2,242	2,219
NE	11,844	11,524	11,919	11,599	2,240	2,121
NY	3,941	3,805	4,270	4,055	2,295	2,417
NC	3,176	3,109	10,811	10,776	1,961	1,977
OH	27,474	27,562	27,955	28,080	2,200	2,183
OR	2,785	2,466	2,975	2,660	2,420	2,406
PA	21,193	21,863	22,988	23,788	2,340	2,346
SC	3,704	3,965	5,018	5,123	1,973	2,011
SD	2,914	3,119	3,014	3,219	2,157	2,175
TX	12,859	14,019	17,226	18,380	2,183	2,220
VA	1,463	1,298	3,331	3,093	2,192	2,069
WA	4,909	4,729	4,975	4,795	2,231	2,377
WI	4,328	4,084	4,824	4,596	2,218	2,263
Oth Sts ³	16,498	15,450	24,481	23,453	2,120	2,158
US	274,861	279,167	339,856	342,175	2,162	2,161

¹ Includes all layers and eggs produced in both table egg and hatching egg flocks regardless of size.

² Revised.

³ Not published separately to avoid disclosing data for individual operations.

**Layers and Eggs: Layers on Hand and Eggs Produced by State
and United States, During July 2005-06**

State	Table Egg Layers in Flocks 30,000 and Above		All Layers ¹		Eggs per 100 for All Layers ¹	
	2005	2006	2005	2006	2005	2006
	<i>1,000</i>	<i>1,000</i>	<i>1,000</i>	<i>1,000</i>	<i>Number</i>	<i>Number</i>
AL	1,780	1,457	9,220	8,562	1,898	1,974
AR	4,040	4,167	14,414	13,976	1,998	1,939
CA	18,405	18,443	18,938	18,957	2,234	2,121
CO	3,278	3,210	3,795	3,703	2,398	2,511
CT	2,954	2,643	3,010	2,703	2,425	2,294
FL	10,604	10,422	11,080	10,813	2,256	2,220
GA	9,776	9,399	18,919	18,569	2,114	2,079
HI	460	422	487	438	2,033	1,963
IL	4,223	4,790	4,453	5,028	2,336	2,287
IN	22,614	23,526	23,360	24,251	2,226	2,284
IA	46,348	50,086	47,101	50,823	2,314	2,357
ME	4,207	4,000	4,266	4,065	2,110	2,263
MD	2,765	2,475	2,876	2,605	2,399	2,380
MI	7,769	8,264	8,022	8,521	2,319	2,371
MN	10,393	10,487	10,926	10,934	2,288	2,232
MS	1,593	1,610	6,855	6,361	2,042	2,075
MO	5,895	6,094	7,266	7,206	2,230	2,304
NE	11,943	11,665	12,018	11,740	2,297	2,232
NY	3,976	3,950	4,305	4,208	2,416	2,519
NC	3,327	3,134	10,932	10,718	1,994	2,053
OH	27,347	26,986	27,841	27,495	2,266	2,233
OR	2,733	2,506	2,926	2,682	2,461	2,424
PA	21,227	21,601	23,045	23,503	2,382	2,438
SC	3,758	3,853	5,037	5,018	2,045	2,112
SD	2,927	3,178	3,027	3,278	2,213	2,227
TX	12,904	14,362	17,307	18,812	2,271	2,249
VA	1,407	1,325	3,325	3,159	2,226	1,994
WA	4,825	4,627	4,889	4,691	2,229	2,345
WI	4,309	4,089	4,806	4,602	2,414	2,303
Oth Sts ²	16,247	15,662	24,127	23,626	2,197	2,222
US	274,034	278,433	338,573	341,047	2,234	2,241

¹ Includes all layers and eggs produced in both table egg and hatching egg flocks regardless of size.

² Not published separately to avoid disclosing data for individual operations.

**Egg Production: By Type, State, and United States,
June 2005-06¹**

State	Total Production		Table Eggs ²		Hatching Eggs ²	
	2005	2006 ³	2005	2006 ³	2005	2006 ³
	<i>Million Eggs</i>	<i>Million Eggs</i>	<i>Million Eggs</i>	<i>Million Eggs</i>	<i>Million Eggs</i>	<i>Million Eggs</i>
AL	173	162	37	34	136	128
AR	278	264	91	90	187	174
CA	408	390				
CO	86	90				
CT	71	58				
FL	243	233	235	227	8	6
GA	389	375	216	205	173	170
HI	9.3	8.2	9.3	8.2	0	0
IL	103	107	100	103	3	4
IN	517	547	505	534	12	13
IA	1,036	1,123				
ME	85	85				
MD	64	63	62	61	2	2
MI	187	195				
MN	244	243	236	235	8	8
MS	138	128	38	38	100	90
MO	163	161				
NE	267	246	267	246	0	0
NY	98	98				
NC	212	213	75	77	137	136
OH	615	613				
OR	72	64	70	62	2	2
PA	538	558	520	537	18	21
SC	99	103	77	84	22	19
SD	65	70	65	70	0	0
TX	376	408				
VA	73	64	38	32	35	32
WA	111	114				
WI	107	104				
Oth Sts ⁴	519	506	396	384	123	123
US	7,346	7,393	6,250	6,338	1,096	1,056

¹ Totals may not add due to rounding.

² Data by type of flock not shown for some States to avoid disclosing individual operations, data included in US totals.

³ Revised.

⁴ Not published separately to avoid disclosing data for individual operations.

**Egg Production: By Type, State, and United States,
July 2005-06¹**

State	Total Production		Table Eggs ²		Hatching Eggs ²	
	2005	2006	2005	2006	2005	2006
	<i>Million Eggs</i>	<i>Million Eggs</i>	<i>Million Eggs</i>	<i>Million Eggs</i>	<i>Million Eggs</i>	<i>Million Eggs</i>
AL	175	169	37	36	138	133
AR	288	271	97	95	191	176
CA	423	402				
CO	91	93				
CT	73	62				
FL	250	240	242	233	8	7
GA	400	386	224	209	176	177
HI	9.9	8.6	9.9	8.6	0	0
IL	104	115	100	111	4	4
IN	520	554	508	541	12	13
IA	1,090	1,198				
ME	90	92				
MD	69	62	67	60	2	2
MI	186	202				
MN	250	244	242	236	8	8
MS	140	132	38	40	102	92
MO	162	166				
NE	276	262	276	262	0	0
NY	104	106				
NC	218	220	80	80	138	140
OH	631	614				
OR	72	65	70	63	2	2
PA	549	573	531	552	18	21
SC	103	106	81	87	22	19
SD	67	73	67	73	0	0
TX	393	423				
VA	74	63	37	30	37	33
WA	109	110				
WI	116	106				
Oth Sts ³	530	525	405	398	126	127
US	7,563	7,643	6,444	6,558	1,120	1,085

¹ Totals may not add due to rounding.

² Data by type of flock not shown for some States to avoid disclosing individual operations, data included in US totals.

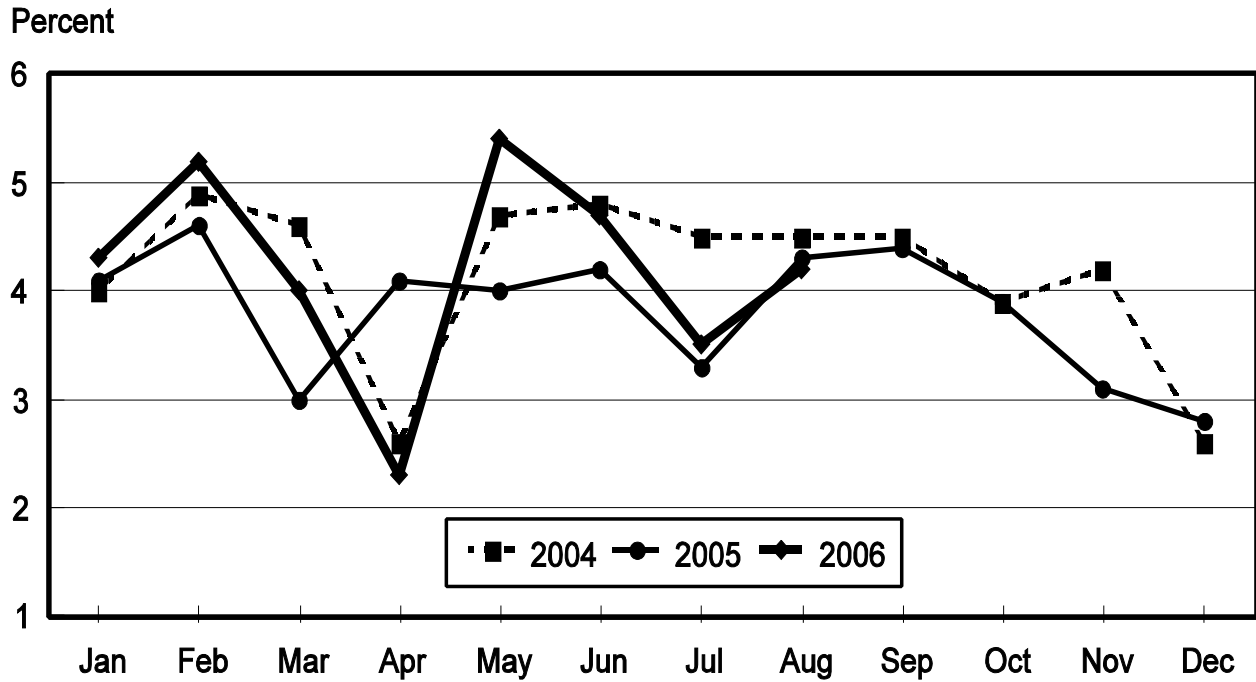
³ Not published separately to avoid disclosing data for individual operations.

**Forced Molt: Percent of All Layers by Month,
United States, 2005-06 ¹**

Month	Percent Being Molted		Percent with Molt Completed	
	2005	2006	2005	2006
	<i>Percent</i>	<i>Percent</i>	<i>Percent</i>	<i>Percent</i>
Jan	4.1	4.3	23.2	23.0
Feb	4.6	5.2	21.7	23.8
Mar	3.0	4.0	22.8	24.4
Apr	4.1	2.3	22.7	24.9
May	4.0	5.4	22.4	23.6
Jun	4.2	4.7	23.0	24.7
Jul	3.3	3.5	22.6	25.7
Aug	4.3	4.2	22.1	25.3
Sep	4.4		22.4	
Oct	3.9		23.4	
Nov	3.1		24.3	
Dec	2.8		23.7	

¹ As of first of month.

**All Layers: Percent Being Molted
United States, 2004 - 2006
First of the Month**



**Forced Molt: Percent of All Layers by State
and United States, August 2005-06 ¹**

State	Percent Being Molted		Percent with Molt Completed	
	2005	2006	2005	2006
	<i>Percent</i>	<i>Percent</i>	<i>Percent</i>	<i>Percent</i>
AL	1.5	0.5	5.0	2.5
AR	1.5	3.5	10.0	10.0
CA	5.5	4.5	32.0	40.5
CO	1.5	0.0	28.0	20.5
CT	0.0	0.0	10.0	22.5
FL	6.0	3.0	27.0	36.5
GA	6.5	3.5	14.0	12.0
HI	9.0	5.5	48.5	55.0
IL	7.0	7.5	29.0	30.5
IN	6.5	6.0	25.0	29.0
IA	5.5	5.5	35.0	35.0
ME	0.0	0.0	0.0	0.0
MD	6.0	8.5	40.0	39.0
MI	6.0	5.0	32.0	23.5
MN	4.5	4.0	18.0	35.5
MS	3.0	2.0	8.0	12.5
MO	4.0	2.5	21.0	24.0
NE	7.0	4.5	24.5	27.0
NY	2.0	2.0	7.5	16.0
NC	0.0	0.0	8.5	9.5
OH	2.0	5.5	16.0	25.0
OR	6.5	9.0	33.0	28.5
PA	5.0	2.5	15.5	18.5
SC	8.0	6.5	25.0	37.0
SD	3.0	5.0	20.5	21.0
TX	2.0	3.5	21.0	23.5
VA	0.0	6.5	14.5	6.5
WA	8.0	4.0	40.0	52.5
WI	6.5	5.5	22.0	32.0
Oth Sts ²	2.6	4.9	25.9	24.0
US	4.3	4.2	22.1	25.3

¹ As of first of month.

² Not published separately to avoid disclosing data for individual operations.

**Hatchery Production: Eggs in Incubators, Chicks Hatched,
and Placements by Type, United States, July-August 2005-06**

Item	2005	2006	2006 as % of 2005
	<i>1,000</i>	<i>1,000</i>	<i>Percent</i>
Egg-Type			
Eggs in Incubators on Aug 1	36,630	31,378	86
Chicks Hatched During Jul	34,897	33,224	95
Chicks Hatched Jan thru Jul	261,191	253,862	97
Pullets Hatched During Jul for Intended Placements in Hatchery Supply Flocks 7-18 Months Earlier ¹	242 3,007	320 2,845	132 95
Broiler-Type			
Eggs in Incubators on Aug 1	664,087	660,130	99
Chicks Hatched During Jul	808,382	800,132	99
Chicks Hatched Jan thru Jul	5,567,659	5,540,181	100
Pullets Hatched During Jul for Intended Placements in Hatchery Supply Flocks 7-15 Months Earlier ²	6,657 62,965	6,456 64,056	97 102

¹ 2006 includes pullet chicks hatched Jan 2005 through Dec 2005.

² 2006 includes pullet chicks hatched Apr 2005 through Dec 2005.

**Egg-Type Eggs in Incubators: By Region and United States,
August 1, 2005-06**

Region	2005	2006	2006 as % of 2005
	<i>1,000</i>	<i>1,000</i>	<i>Percent</i>
North Atlantic	5,577	5,371	96
E North Central	6,917	6,368	92
W North Central	7,207	6,776	94
South Atlantic	4,102	3,377	82
South Central	6,444	5,289	82
West	6,383	4,197	66
US	36,630	31,378	86

Regions:

North Atlantic = CT, ME, MA, NH, NJ, NY, PA, RI, VT.

E North Central = IL, IN, MI, OH, WI.

W North Central = IA, KS, MN, MO, NE, ND, SD.

South Atlantic = DE, FL, GA, MD, NC, SC, VA, WV.

South Central = AL, AR, KY, LA, MS, OK, TN, TX.

West = AK, AZ, CA, CO, HI, ID, MT, NM, NV, OR, UT, WA, WY.

**Egg-Type Chicks Hatched: By State and United States,
July 2005-06**

State	During July			Jan-Jul		
	2005	2006	2006 as % of 2005	2005	2006	2006 as % of 2005
	<i>1,000</i>	<i>1,000</i>	<i>Percent</i>	<i>1,000</i>	<i>1,000</i>	<i>Percent</i>
GA	2,258	2,195	97	15,985	15,927	100
IN	4,623	4,569	99	35,289	34,112	97
IA	6,747	6,117	91	44,435	46,601	105
MN	1,100	754	69	7,383	6,759	92
PA	4,227	3,736	88	33,894	30,354	90
Oth Sts ¹	15,528	15,197	98	119,689	114,625	96
US	34,897	33,224	95	261,191	253,862	97

¹ Not published separately to avoid disclosing data for individual operations.

Egg-Type Chicks Hatched: By Month, United States, 2005-06

Month	By Months			Cumulative		
	2005	2006	2006 as % of 2005	2005	2006	2006 as % of 2005
	<i>1,000</i>	<i>1,000</i>	<i>Percent</i>	<i>1,000</i>	<i>1,000</i>	<i>Percent</i>
Jan	38,291	35,422	93	38,921	35,422	93
Feb	34,427	33,665	98	72,718	69,087	95
Mar	41,701	38,918	93	114,419	108,005	94
Apr	38,049	34,613	91	152,468	142,618	94
May	38,792	40,320	104	191,260	182,938	96
Jun	35,034	37,700	108	226,294	220,638	98
Jul	34,897	33,224	95	261,191	253,862	97
Aug	38,700			299,891		
Sep	33,623			333,514		
Oct	35,461			368,975		
Nov	32,285			401,260		
Dec	35,917			437,177		

**Intended Placements: Egg-Type Pullet Chicks for Hatchery Supply
Flocks by Month and Total, United States, 2005-06¹**

Month	Pullet Chicks Hatched		2006 as % of 2005	Cumulative Potential Plcmts Relative to Current Supply Flocks 7-18 Months Earlier ²	
	2005	2006		2006	2007
	<i>1,000</i>	<i>1,000</i>	<i>Percent</i>	<i>1,000</i>	<i>1,000</i>
Jan	157	188	120	2,837	2,842
Feb	208	196	94	2,845	2,920
Mar	314	286	91	2,788	
Apr	308	255	83	2,958	
May	190	241	127	2,878	
Jun	175	183	105	2,833	
Jul	242	320	132	2,845	
Aug	261			2,876	
Sep	375			2,864	
Oct	188			2,836	
Nov	180			2,783	
Dec	247			2,834	
Total	2,845				

¹ Reported by leading breeders. Coverage may not be 100 percent. Includes expected pullet chicks from eggs sold during the preceding month at the rate of 125 pullet chicks per 30 dozen case of eggs.

² For July 2006, includes breeder pullet chicks hatched Jan 2005 through Dec 2005. The 7-18 months represent the first laying cycle. Molting and additional laying cycles will increase the cumulative potential placements.

**Broiler-Type Eggs in Incubators: By Region
and United States, August 1, 2005-06**

Region	2005	2006	2006 as % of 2005
	<i>1,000</i>	<i>1,000</i>	<i>Percent</i>
North Atlantic	12,692	12,508	99
E North Central	9,153	9,188	100
W North Central	24,404	23,526	96
South Atlantic	238,363	243,475	102
South Central	353,295	346,003	98
West	26,180	25,430	97
US	664,087	660,130	99

**Broiler-Type Chicks Hatched: By State
and United States, July 2005-06**

State	During July			Jan-Jul		
	2005	2006	2006 as % of 2005	2005	2006	2006 as % of 2005
	<i>1,000</i>	<i>1,000</i>	<i>Percent</i>	<i>1,000</i>	<i>1,000</i>	<i>Percent</i>
AL	116,085	115,628	100	778,954	794,128	102
AR	112,523	108,898	97	786,276	769,748	98
DE	15,103	14,371	95	101,839	97,190	95
FL	5,068	5,007	99	34,026	34,209	101
GA	121,744	127,517	105	843,210	865,040	103
KY	25,826	25,776	100	178,994	178,029	99
LA	15,225	14,532	95	102,862	102,138	99
MD	32,776	32,462	99	220,103	219,382	100
MS	72,443	66,492	92	496,347	466,148	94
NC	66,046	67,743	103	465,197	471,056	101
OK	23,992	22,256	93	164,996	159,322	97
PA	14,384	14,600	102	99,722	98,844	99
SC	18,746	19,330	103	127,378	130,753	103
TX	56,826	54,443	96	387,284	382,556	99
VA	23,969	23,653	99	164,655	163,241	99
CA, MO, TN, & WV	65,947	65,384	99	457,988	450,967	98
19 Sts ¹	786,703	778,092	99	5,409,831	5,382,751	99
Oth Sts ²	21,679	22,040	102	157,828	157,430	100
US	808,382	800,132	99	5,567,659	5,540,181	100

¹ States in the weekly hatchery production estimating program.

² Not published separately to avoid disclosing data for individual operations.

Broiler-Type Chicks Hatched: By Month, United States, 2005-06

Month	By Months			Cumulative		
	2005	2006	2006 as % of 2005	2005	2006	2006 as % of 2005
	<i>1,000</i>	<i>1,000</i>	<i>Percent</i>	<i>1,000</i>	<i>1,000</i>	<i>Percent</i>
Jan	797,576	804,073	101	797,576	804,073	101
Feb	732,038	733,145	100	1,529,614	1,537,218	100
Mar	816,552	817,068	100	2,346,166	2,354,286	100
Apr	792,173	787,064	99	3,138,339	3,141,350	100
May	823,993	810,908	98	3,962,332	3,952,258	100
Jun	796,945	787,791	99	4,759,277	4,740,049	100
Jul	808,382	800,132	99	5,567,659	5,540,181	100
Aug	812,474			6,380,133		
Sep	771,146			7,151,279		
Oct	776,449			7,927,728		
Nov	747,866			8,675,594		
Dec	808,525			9,484,119		

**Intended Placements: Broiler-Type Pullet Chicks for Hatchery
Supply Flocks by Month and Total, 2005-06 ¹**

Month	Pullet Chicks Hatched		2006 as % of 2005	Cumulative Potential Plcmts Relative to Current Supply Flocks 7-15 Months Earlier ²	
	2005	2006		2006	2007
	<i>1,000</i>	<i>1,000</i>	<i>Percent</i>	<i>1,000</i>	<i>1,000</i>
US Place- ments					
Jan	6,409	6,825	106	62,860	64,544
Feb	7,325	7,593	104	63,060	64,056
Mar	7,077	7,012	99	63,416	
Apr	6,800	6,593	97	63,776	
May	7,783	7,531	97	64,311	
Jun	7,109	7,636	107	64,284	
Jul	6,657	6,456	97	64,319	
Aug	7,484			64,344	
Sep	7,132			64,154	
Oct	6,944			64,057	
Nov	7,298			63,993	
Dec	7,112			64,040	
Annual Total	85,130				
Total Place- ments ³					
Jan	7,804	8,018	103		
Feb	8,664	9,026	104		
Mar	8,709	8,415	97		
Apr	7,995	7,558	95		
May	8,995	8,930	99		
Jun	8,571	9,144	107		
Jul	7,846	7,807	100		
Aug	9,084				
Sep	8,683				
Oct	8,279				
Nov	8,830				
Dec	8,256				
Annual Total	101,716				

¹ Reported by leading breeders. Coverage may not be 100 percent. Includes expected pullet chicks from eggs sold during the preceding month at the rate of 125 pullet chicks per 30 dozen case of eggs.

² For Jul 2006, includes breeder pullet chicks hatched Apr 2005 through Dec 2005.

³ U.S. production of intended placements worldwide.

Reliability of Chicken and Eggs Estimates

Survey Procedures: Primary data for the "**Chickens and Eggs**" report are from weekly and/or monthly questionnaires sent to producers. An attempt is made to collect information for layer and egg estimates from each known contractor and independent producer who has at least 30,000 table egg layers, flocks of hatchery supply layers, or pullet only operations with at least 500 pullets. Coverage for operations with less than 30,000 table egg layers are estimated each month based on data reported in December. Approximately 650 contractors, independent egg producers, and pullet only operations are contacted each month. All known hatcheries, approximately 330, are contacted for information on a weekly and/or monthly basis.

Revision Policy: The previous month's estimates are subject to revision if late reports or corrected data indicates a different level. Additionally, revisions after the monthly report will be made at the end of the marketing year and published in the annual reports of "**Chickens and Eggs Summary**" and "**Hatchery Production**".

Reliability: Operations are mailed a questionnaire and given adequate time to respond by mail. Those that do not respond are phoned. Great care is exercised to ensure that all operations are accounted for during each survey period. However, there are usually missing reports that must be accounted for in the estimates.

Sound statistical methodology is employed to derive estimates from the reported data. All data are checked for unusual values. All operations' data are compared to their own past operating profiles and also to trends from other operations. Data for missing operations are estimated based on similar operations or historical data. Survey data are subject to non-sampling errors such as omissions and mistakes in reporting and in processing. While these errors cannot be measured directly, they are minimized by reviewing all data for consistency and reasonableness.

Egg-type chicks hatched consist of all chicks of egg-type domesticated breeds including males and chicks destined for hatchery supply flocks and research purposes. The relationship of chicks hatched to chicken inventory and poultry marketings is carefully monitored. The disposition of egg-type chicks hatched prior to placement into the laying flock can vary significantly, which can make comparisons to changes in layer inventory inconsistent over time.

Intended placement data reported by leading breeders include pullet chicks expected from eggs sold the preceding month. The breeders in this report account for a large percentage of replacement pullets for hatchery supply flocks. Production of replacement pullets by these breeders indicates the number of pullets available to hatchery supply flocks several months before the pullets will actually move into the flocks. "Hatchery Supply Flocks" include all generations of layers which could lay eggs to supply a hatchery. This includes the generations of parents, grandparents, great-grandparents, pedigree, etc. Also included are research flocks, vaccine flocks, and specific pathogen-free flocks. The broiler cumulative potential placements are a moving total of the intended placements 7-15 months earlier. The egg-type cumulative potential placements of 7-18 months represent the first laying cycle. Molting and additional laying cycles will increase the cumulative potential placements of egg-type hatching flocks.

Information Contacts

Listed below are the commodity specialists in the Livestock Branch of the National Agricultural Statistics Service to contact for additional information.

Dan Kerestes, Chief, Livestock Branch	(202) 720-3570
Darin Jantzi, Head, Poultry and Specialty Commodities Section	(202) 720-3570
David Colwell - Cold Storage	(202) 720-8784
Fleming Gibson - Egg Products, Poultry Slaughter, Catfish Processing, Mink	(202) 690-3237
John Lange - Turkeys Raised, Turkey Hatchery, Catfish Production, Trout Production, Census of Aquaculture	(202) 720-0585
Sharyn Lavender - Layers, Eggs, Broiler Hatchery, Chicken Hatchery, Honey	(202) 720-3244

ACCESS TO REPORTS!!

For your convenience, there are several ways to obtain NASS reports, data products, and services:

INTERNET ACCESS

All NASS reports are available free of charge on the worldwide Internet. For access, connect to the Internet and go to the NASS Home Page at: www.nass.usda.gov.

E-MAIL SUBSCRIPTION

All NASS reports are available by subscription free of charge direct to your e-mail address. Starting with the NASS Home Page at www.nass.usda.gov, under the right navigation, *Receive reports by Email*, click on **National** or **State**. Follow the instructions on the screen.

PRINTED REPORTS OR DATA PRODUCTS

CALL OUR TOLL-FREE ORDER DESK: 800-999-6779 (U.S. and Canada)
Other areas, please call 703-605-6220 FAX: 703-605-6900
(Visa, MasterCard, check, or money order acceptable for payment.)

ASSISTANCE

For **assistance** with general agricultural statistics or further information about NASS or its products or services, contact the **Agricultural Statistics Hotline** at **800-727-9540**, 7:30 a.m. to 4:00 p.m. ET, or e-mail: nass@nass.usda.gov.

The U.S. Department of Agriculture (USDA) prohibits discrimination in all its programs and activities on the basis of race, color, national origin, age, disability, and where applicable, sex, marital status, familial status, parental status, religion, sexual orientation, genetic information, political beliefs, reprisal, or because all or part of an individual's income is derived from any public assistance program. (Not all prohibited bases apply to all programs.) Persons with disabilities who require alternative means for communication of program information (Braille, large print, audiotape, etc.) should contact USDA's TARGET Center at (202) 720-2600 (voice and TDD).

To file a complaint of discrimination, write to USDA, Director, Office of Civil Rights, 1400 Independence Avenue, S.W., Washington, D.C. 20250-9410, or call (800) 795-3272 (voice) or (202) 720-6382 (TDD). USDA is an equal opportunity provider and employer.