



NASS

FACT FINDERS FOR AGRICULTURE
UNITED STATES DEPARTMENT OF AGRICULTURE

Washington, D.C.

Chickens And Eggs

Released October 23, 2006, by the National Agricultural Statistics Service (NASS), Agricultural Statistics Board, U.S. Department of Agriculture. For information on *Chickens and Eggs* call Sharyn Lavender at (202) 720-3244, office hours 7:30 a.m. to 4:00 p.m. ET.

September Egg Production Up 1 Percent

U.S. egg production totaled 7.42 billion during September 2006, up 1 percent from last year. Production included 6.38 billion table eggs, and 1.04 billion hatching eggs, of which 977 million were broiler-type and 63 million were egg-type. The total number of layers during September 2006 averaged 343 million, up slightly from last year. September egg production per 100 layers was 2,165 eggs, up slightly from September 2005.

All layers in the U.S. on October 1, 2006, totaled 343 million, up slightly from last year. The 343 million layers consisted of 288 million layers producing table or market type eggs, 53.2 million layers producing broiler-type hatching eggs, and 2.65 million layers producing egg-type hatching eggs. Rate of lay per day on October 1, 2006, averaged 71.7 eggs per 100 layers, down slightly from October 1, 2005.

Egg-Type Chicks Hatched Up 10 Percent

Egg-type chicks hatched during September 2006 totaled 36.8 million, up 10 percent from September 2005. Eggs in incubators totaled 35.2 million on October 1, 2006, up 4 percent from a year ago.

Domestic placements of egg-type pullet chicks for future hatchery supply flocks by leading breeders totaled 243,000 during September 2006, down 35 percent from September 2005.

Broiler-Type Chicks Hatched Up Slightly

Broiler-type chicks hatched during September 2006 totaled 772 million, up slightly from September 2005. Eggs in incubators totaled 632 million on October 1, 2006, up slightly from a year earlier.

Leading breeders placed 7.06 million broiler-type pullet chicks for future domestic hatchery supply flocks during September 2006, down 1 percent from September 2005.

Contents

Page

U.S. Average Number of Layers on Hand and Egg Production	1
U.S. Layers on Hand and Eggs Produced by Type, Forced Molt, and Pullets	3
Layers on Hand and Eggs Produced by State	5
Egg Production by Type and State	7
Forced Molt	9
Egg-Type Hatchery	11
Egg-Type Intended Placements	13
Broiler-Type Hatchery	13
Broiler-Type Intended Placements	15
Procedures and Reliability	16
Information Contacts	16

**All Layers: Average Number on Hand During the Month,
United States, 2004-06**

Month	2004	2005	2006
	<i>1,000 Layers</i>	<i>1,000 Layers</i>	<i>1,000 Layers</i>
Dec ¹	339,305	345,618	348,545
Jan	337,948	347,864	349,246
Feb	338,905	348,791	349,764
Mar	340,699	346,959	350,088
Apr	341,550	343,574	348,154
May	341,562	341,819	344,718
Jun	342,513	339,856	342,175
Jul	343,180	338,573	340,743
Aug	343,653	339,351	341,007
Sep	344,452	340,914	342,606
Oct	345,075	342,823	
Nov	344,633	345,874	

¹ December preceding year.

**Eggs: Production During the Month by Type,
United States, 2005-06 ¹**

Month	Total Eggs		Table Eggs		Hatching Eggs	
	2005	2006	2005	2006	2005	2006
	<i>Million Eggs</i>	<i>Million Eggs</i>	<i>Million Eggs</i>	<i>Million Eggs</i>	<i>Million Eggs</i>	<i>Million Eggs</i>
Dec ²	7,721	7,791	6,636	6,703	1,086	1,088
Jan	7,626	7,721	6,526	6,624	1,101	1,097
Feb	6,928	6,977	5,915	5,988	1,014	989
Mar	7,738	7,837	6,610	6,735	1,129	1,103
Apr	7,407	7,535	6,311	6,469	1,097	1,066
May	7,572	7,627	6,439	6,520	1,133	1,107
Jun	7,346	7,393	6,250	6,338	1,096	1,056
Jul	7,563	7,636	6,444	6,551	1,120	1,085
Aug	7,528	7,635	6,425	6,556	1,104	1,079
Sep	7,348	7,419	6,279	6,379	1,070	1,040
Oct	7,665		6,561		1,104	
Nov	7,514		6,459		1,055	
During Year	89,960		76,859		13,103	

¹ Totals may not add due to rounding.

² December preceding year.

Table Egg Layers

United States, 2004 - 2006

First of the Month

Million Layers

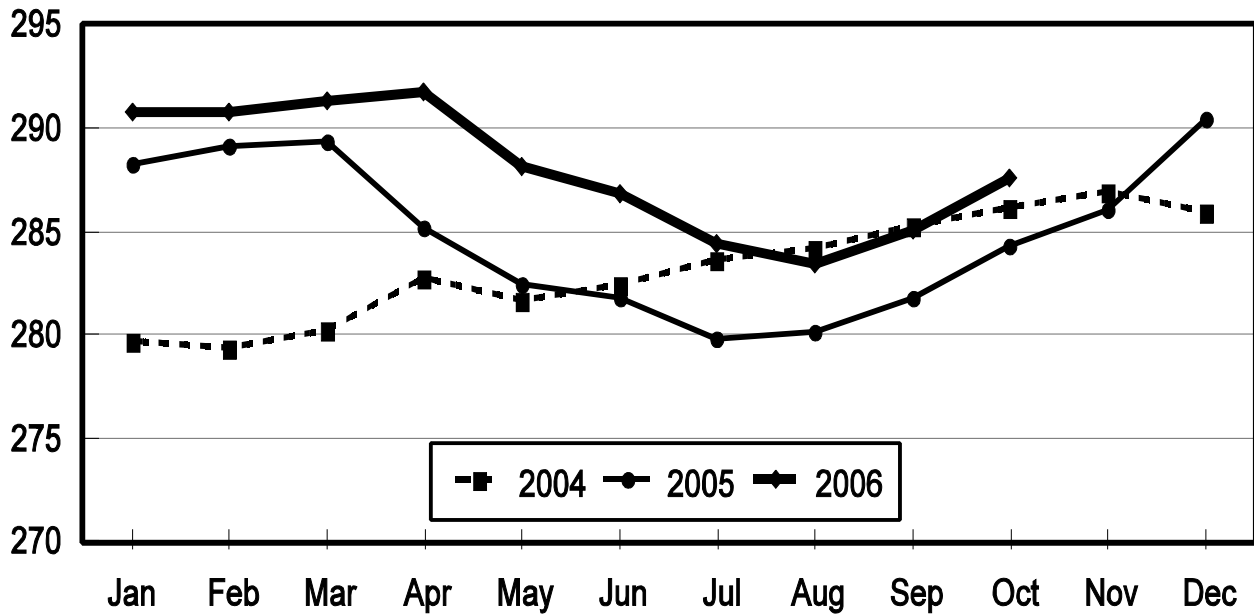
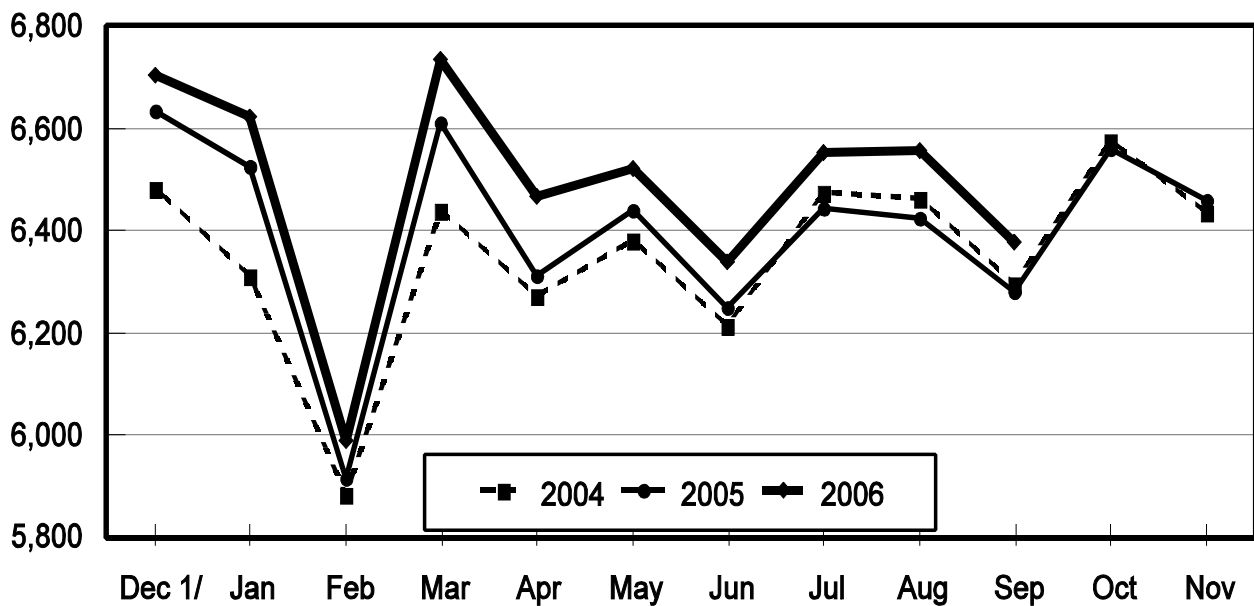


Table Egg Production

United States, 2004 - 2006

During the Month

Million Eggs



1/ Previous Year

**Layers and Eggs: Layers on Hand and Eggs Produced by Type,
and Forced Molt, United States, August-September 2005-06¹**

Item	Unit	2005	2006 ²	2006 as % of 2005
Layers During Aug	1,000			
All Layers		339,351	341,007	100
Table Egg Type		280,984	284,272	101
Hatching Egg Type		58,367	56,735	97
Broiler-Type Hatching		55,692	53,991	97
Egg-Type Hatching		2,675	2,744	103
Eggs per 100 Layers During Aug	Number			
All Layers		2,218	2,239	101
Table Egg Type		2,287	2,306	101
Hatching Egg Type		1,891	1,902	101
Broiler-Type Hatching		1,871	1,878	100
Egg-Type Hatching		2,318	2,369	102
Eggs Produced During Aug	Million			
All Layers		7,528	7,635	101
Table Egg Type		6,425	6,556	102
Hatching Egg Type		1,104	1,079	98
Broiler-Type Hatching		1,042	1,014	97
Egg-Type Hatching		62	65	105
Layers on Sep 1	1,000			
All Layers		339,984	341,748	101
Table Egg Type		281,821	285,088	101
Hatching Egg Type		58,163	56,660	97
Broiler-Type Hatching		55,467	53,934	97
Egg-Type Hatching		2,696	2,726	101
Eggs per 100 Layers on Sep 1	Number			
All Layers		71.7	72.6	101
Table Egg Type		73.9	74.9	101
Hatching Egg Type		61.0	61.2	100
Broiler-Type Hatching		60.2	60.5	100
Egg-Type Hatching		76.3	75.8	99
Forced Molt Layers on Sep 1	Percent			
Percent Being Molted		4.4	3.4	77
Percent with Molt Completed		22.4	25.9	116
Layers Sold for Slaughter During Aug	1,000	13,934	12,680	91
Layers Rendered, Died, Destroyed, Composted or Disappeared For Any Reason During Aug	1,000	7,231	7,836	108
Pullets on Sep 1	1,000	101,132	100,350	99
Pullets Added During Aug ³	1,000	23,635	22,579	96

¹ Totals may not add due to rounding.

² Revised.

³ Pullet chicks less than 3 days old added to pullet flocks.

**Layers and Eggs: Layers on Hand and Eggs Produced by Type,
and Forced Molt, United States, September-October 2005-06 ¹**

Item	Unit	2005	2006	2006 as % of 2005
Layers During Sep	1,000			
All Layers		340,914	342,606	100
Table Egg Type		283,098	286,365	101
Hatching Egg Type		57,816	56,241	97
Broiler-Type Hatching		55,222	53,552	97
Egg-Type Hatching		2,594	2,689	104
Eggs per 100 Layers During Sep	Number			
All Layers		2,155	2,165	100
Table Egg Type		2,218	2,228	100
Hatching Egg Type		1,851	1,849	100
Broiler-Type Hatching		1,829	1,824	100
Egg-Type Hatching		2,313	2,343	101
Eggs Produced During Sep	Million			
All Layers		7,348	7,419	101
Table Egg Type		6,279	6,379	102
Hatching Egg Type		1,070	1,040	97
Broiler-Type Hatching		1,010	977	97
Egg-Type Hatching		60	63	105
Layers on Oct 1	1,000			
All Layers		341,803	343,428	100
Table Egg Type		284,359	287,622	101
Hatching Egg Type		57,444	55,806	97
Broiler-Type Hatching		54,960	53,160	97
Egg-Type Hatching		2,484	2,646	107
Eggs per 100 Layers on Oct 1	Number			
All Layers		71.8	71.7	100
Table Egg Type		73.8	73.6	100
Hatching Egg Type		62.0	61.8	100
Broiler-Type Hatching		61.3	61.0	100
Egg-Type Hatching		78.7	79.6	101
Forced Molt Layers on Oct 1	Percent			
Percent Being Molted		3.9	4.2	108
Percent with Molt Completed		23.4	25.7	110
Layers Sold for Slaughter During Sep	1,000	15,785	12,639	80
Layers Rendered, Died, Destroyed, Composted or Disappeared For Any Reason During Sep	1,000	6,927	6,723	97
Pullets on Oct 1	1,000	98,604	99,155	101
Pullets Added During Sep ²	1,000	23,681	22,028	93

¹ Totals may not add due to rounding.

² Pullet chicks less than 3 days old added to pullet flocks.

**Layers and Eggs: Layers on Hand and Eggs Produced by State
and United States, During August 2005-06**

State	Table Egg Layers in Flocks 30,000 and Above		All Layers ¹		Eggs per 100 for All Layers ¹	
	2005	2006	2005	2006	2005	2006
	<i>1,000</i>	<i>1,000</i>	<i>1,000</i>	<i>1,000</i>	<i>Number</i>	<i>Number</i>
AL	1,721	1,512	9,074	8,615	1,862	1,962
AR	4,062	4,261	14,186	13,988	1,995	1,966
CA	18,731	18,479	19,260	18,986	2,186	2,154
CO	3,290	3,363	3,843	3,868	2,368	2,456
CT	2,854	2,606	2,911	2,665	2,473	2,439
FL	10,730	10,099	11,210	10,498	2,248	2,296
GA	9,617	9,595	18,849	18,818	2,058	2,088
HI	467	413	491	429	1,935	1,911
IL	4,146	4,884	4,372	5,122	2,356	2,226
IN	22,742	23,665	23,525	24,357	2,176	2,250
IA	46,744	49,731	47,500	50,466	2,301	2,350
ME	4,227	3,960	4,287	4,026	2,169	2,335
MD	2,706	2,483	2,808	2,608	2,457	2,339
MI	7,694	8,598	7,944	8,850	2,253	2,350
MN	10,598	10,274	11,128	10,723	2,265	2,229
MS	1,614	1,603	6,850	6,295	1,971	2,081
MO	5,772	6,026	7,136	7,116	2,186	2,305
NE	11,922	11,574	11,997	11,649	2,334	2,309
NY	3,965	3,979	4,291	4,237	2,424	2,502
NC	3,458	3,363	11,061	10,945	1,971	2,047
OH	27,499	27,202	28,000	27,716	2,286	2,190
OR	2,739	2,515	2,932	2,674	2,422	2,393
PA	21,516	21,336	23,371	23,260	2,323	2,425
SC	3,640	3,763	4,825	4,958	2,135	2,138
SD	2,960	3,171	3,060	3,271	2,255	2,232
TX	12,997	14,331	17,359	18,789	2,252	2,251
VA	1,394	1,344	3,347	3,198	2,181	1,939
WA	4,788	4,702	4,851	4,765	2,288	2,267
WI	4,250	4,095	4,746	4,595	2,339	2,394
Oth Sts ²	16,213	15,561	24,137	23,520	2,221	2,207
US	275,056	278,488	339,351	341,007	2,218	2,239

¹ Includes all layers and eggs produced in both table egg and hatching egg flocks regardless of size.

² Not published separately to avoid disclosing data for individual operations.

**Layers and Eggs: Layers on Hand and Eggs Produced by State
and United States, During September 2005-06**

State	Table Egg Layers in Flocks 30,000 and Above		All Layers ¹		Eggs per 100 for All Layers ¹	
	2005	2006	2005	2006	2005	2006
	<i>1,000</i>	<i>1,000</i>	<i>1,000</i>	<i>1,000</i>	<i>Number</i>	<i>Number</i>
AL	1,717	1,660	9,034	8,748	1,838	1,875
AR	4,344	4,489	14,448	13,964	1,938	1,905
CA	18,609	18,540	19,134	19,006	2,132	2,157
CO	3,300	3,356	3,865	3,851	2,251	2,389
CT	2,906	2,605	2,965	2,662	2,293	2,367
FL	10,859	10,220	11,354	10,616	2,202	2,195
GA	9,768	9,607	18,944	18,806	2,027	2,042
HI	473	411	496	427	1,774	1,780
IL	4,298	4,815	4,526	5,059	2,298	2,253
IN	22,918	23,670	23,676	24,373	2,192	2,220
IA	48,119	50,415	48,826	51,155	2,198	2,178
ME	4,083	3,923	4,149	3,994	1,976	2,103
MD	2,590	2,622	2,691	2,746	2,341	2,258
MI	7,548	8,870	7,798	9,121	2,270	2,237
MN	10,622	10,373	11,140	10,838	2,208	2,178
MS	1,671	1,633	6,844	6,257	1,899	1,998
MO	5,637	6,180	6,918	7,267	2,197	2,202
NE	11,837	11,481	11,912	11,556	2,275	2,241
NY	3,896	4,019	4,219	4,277	2,299	2,315
NC	3,523	3,576	11,011	11,157	1,934	1,954
OH	27,377	27,479	27,875	28,003	2,242	2,196
OR	2,802	2,496	2,995	2,655	2,270	2,411
PA	21,715	21,281	23,523	23,180	2,240	2,338
SC	3,690	3,647	4,881	4,865	2,151	2,097
SD	3,089	3,144	3,189	3,244	2,101	2,158
TX	13,094	14,374	17,409	18,723	2,143	2,217
VA	1,411	1,337	3,378	3,201	2,043	2,031
WA	4,825	4,714	4,886	4,775	2,231	2,262
WI	4,305	4,012	4,795	4,515	2,211	2,259
Oth Sts ²	16,145	15,632	24,033	23,565	2,164	2,122
US	277,171	280,581	340,914	342,606	2,155	2,165

¹ Includes all layers and eggs produced in both table egg and hatching egg flocks regardless of size.

² Not published separately to avoid disclosing data for individual operations.

**Egg Production: By Type, State, and United States,
August 2005-06¹**

State	Total Production		Table Eggs ²		Hatching Eggs ²	
	2005	2006	2005	2006	2005	2006
	<i>Million Eggs</i>	<i>Million Eggs</i>	<i>Million Eggs</i>	<i>Million Eggs</i>	<i>Million Eggs</i>	<i>Million Eggs</i>
AL	169	169	35	37	134	132
AR	283	275	97	99	186	176
CA	421	409				
CO	91	95				
CT	72	65				
FL	252	241	245	234	7	7
GA	388	393	211	216	177	177
HI	9.5	8.2	9.5	8.2	0	0
IL	103	114	100	110	3	4
IN	512	548	499	536	13	12
IA	1,093	1,186				
ME	93	94				
MD	69	61	67	59	2	2
MI	179	208				
MN	252	239	244	231	8	8
MS	135	131	37	39	98	92
MO	156	164				
NE	280	269	280	269	0	0
NY	104	106				
NC	218	224	83	85	135	139
OH	640	607				
OR	71	64	69	62	2	2
PA	543	564	525	543	18	21
SC	103	106	83	85	20	21
SD	69	73	69	73	0	0
TX	391	423				
VA	73	62	36	29	37	33
WA	111	108				
WI	111	110				
Oth Sts ³	536	519	411	394	126	125
US	7,528	7,635	6,425	6,556	1,104	1,079

¹ Totals may not add due to rounding.

² Data by type of flock not shown for some States to avoid disclosing individual operations, data included in US totals.

³ Not published separately to avoid disclosing data for individual operations.

**Egg Production: By Type, State, and United States,
September 2005-06 ¹**

State	Total Production		Table Eggs ²		Hatching Eggs ²	
	2005	2006	2005	2006	2005	2006
	<i>Million Eggs</i>	<i>Million Eggs</i>	<i>Million Eggs</i>	<i>Million Eggs</i>	<i>Million Eggs</i>	<i>Million Eggs</i>
AL	166	164	36	37	130	127
AR	280	266	98	99	182	167
CA	408	410				
CO	87	92				
CT	68	63				
FL	250	233	243	226	7	7
GA	384	384	210	213	174	171
HI	8.8	7.6	8.8	7.6	0	0
IL	104	114	101	110	3	4
IN	519	541	507	529	12	12
IA	1,073	1,114				
ME	82	84				
MD	63	62	62	60	1	2
MI	177	204				
MN	246	236	238	228	8	8
MS	130	125	38	37	92	88
MO	152	160				
NE	271	259	271	259	0	0
NY	97	99				
NC	213	218	82	85	131	133
OH	625	615				
OR	68	64	66	62	2	2
PA	527	542	510	522	17	20
SC	105	102	85	81	20	21
SD	67	70	67	70	0	0
TX	373	415				
VA	69	65	32	32	37	33
WA	109	108				
WI	106	102				
Oth Sts ³	520	500	397	378	124	122
US	7,348	7,419	6,279	6,379	1,070	1,040

¹ Totals may not add due to rounding.

² Data by type of flock not shown for some States to avoid disclosing individual operations, data included in US totals.

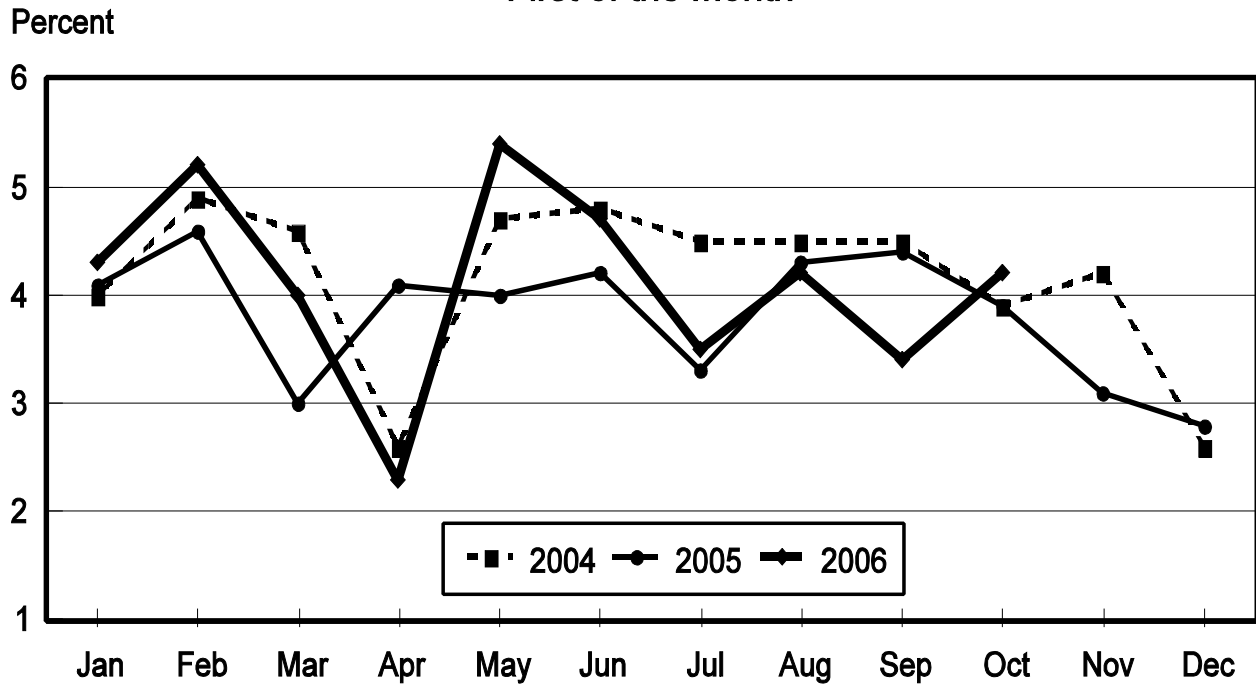
³ Not published separately to avoid disclosing data for individual operations.

**Forced Molt: Percent of All Layers by Month,
United States, 2005-06¹**

Month	Percent Being Molted		Percent with Molt Completed	
	2005	2006	2005	2006
	<i>Percent</i>	<i>Percent</i>	<i>Percent</i>	<i>Percent</i>
Jan	4.1	4.3	23.2	23.0
Feb	4.6	5.2	21.7	23.8
Mar	3.0	4.0	22.8	24.4
Apr	4.1	2.3	22.7	24.9
May	4.0	5.4	22.4	23.6
Jun	4.2	4.7	23.0	24.7
Jul	3.3	3.5	22.6	25.7
Aug	4.3	4.2	22.1	25.2
Sep	4.4	3.4	22.4	25.9
Oct	3.9	4.2	23.4	25.7
Nov	3.1		24.3	
Dec	2.8		23.7	

¹ As of first of month.

**All Layers: Percent Being Molted
United States, 2004 - 2006
First of the Month**



**Forced Molt: Percent of All Layers by State
and United States, October 2005-06 ¹**

State	Percent Being Molted		Percent with Molt Completed	
	2005	2006	2005	2006
	<i>Percent</i>	<i>Percent</i>	<i>Percent</i>	<i>Percent</i>
AL	1.5	0.0	6.0	5.0
AR	4.5	3.5	10.0	12.5
CA	4.5	5.0	35.5	37.0
CO	1.5	3.5	26.0	23.0
CT	6.0	0.0	9.5	17.0
FL	5.0	10.5	28.0	40.0
GA	3.0	4.0	15.0	11.0
HI	5.0	9.5	52.0	60.0
IL	2.5	3.5	30.5	34.5
IN	2.5	5.0	28.5	30.0
IA	4.5	5.5	34.5	35.5
ME	0.0	0.0	0.0	0.0
MD	4.0	4.5	46.0	42.0
MI	5.0	7.0	24.5	23.0
MN	4.5	4.5	23.5	36.0
MS	1.0	2.0	10.0	13.5
MO	4.0	4.0	20.5	22.0
NE	8.0	4.0	28.0	25.5
NY	3.5	3.5	7.0	10.5
NC	0.5	2.0	10.5	9.5
OH	5.0	7.0	17.5	26.5
OR	8.0	8.5	36.5	26.0
PA	3.0	1.5	19.0	16.5
SC	5.5	4.5	19.5	40.0
SD	8.0	5.0	17.5	22.0
TX	2.0	1.5	22.5	23.5
VA	3.0	0.0	12.0	20.5
WA	6.0	4.0	43.1	57.5
WI	7.5	2.5	29.5	30.0
Oth Sts ²	3.5	3.6	25.3	25.6
US	3.9	4.2	23.4	25.7

¹ As of first of month.

² Not published separately to avoid disclosing data for individual operations.

**Hatchery Production: Eggs in Incubators, Chicks Hatched,
and Placements by Type, United States, September-October 2005-06**

Item	2005	2006	2006 as % of 2005
	<i>1,000</i>	<i>1,000</i>	<i>Percent</i>
Egg-Type			
Eggs in Incubators on Oct 1	33,782	35,152	104
Chicks Hatched During Sep	33,623	36,845	110
Chicks Hatched Jan thru Sep	333,514	325,599	98
Pullets Hatched During Sep for Intended Placements in Hatchery Supply Flocks 7-18 Months Earlier ¹	375 2,963	243 2,864	65 97
Broiler-Type			
Eggs in Incubators on Oct 1	631,849	632,413	100
Chicks Hatched During Sep	771,146	771,719	100
Chicks Hatched Jan thru Sep	7,151,279	7,121,184	100
Pullets Hatched During Sep for Intended Placements in Hatchery Supply Flocks 7-15 Months Earlier ²	7,132 62,707	7,063 64,154	99 102

¹ 2006 includes pullet chicks hatched Mar 2005 through Feb 2006.

² 2006 includes pullet chicks hatched Jun 2005 through Feb 2006.

**Egg-Type Eggs in Incubators: By Region and United States,
October 1, 2005-06**

Region	2005	2006	2006 as % of 2005
	<i>1,000</i>	<i>1,000</i>	<i>Percent</i>
North Atlantic	5,237	6,200	118
E North Central	6,328	6,305	100
W North Central	7,069	8,010	113
South Atlantic	3,457	4,113	119
South Central	5,100	6,053	119
West	6,591	4,471	68
US	33,782	35,152	104

Regions:

North Atlantic = CT, ME, MA, NH, NJ, NY, PA, RI, VT.

E North Central = IL, IN, MI, OH, WI.

W North Central = IA, KS, MN, MO, NE, ND, SD.

South Atlantic = DE, FL, GA, MD, NC, SC, VA, WV.

South Central = AL, AR, KY, LA, MS, OK, TN, TX.

West = AK, AZ, CA, CO, HI, ID, MT, NM, NV, OR, UT, WA, WY.

**Egg-Type Chicks Hatched: By State and United States,
September 2005-06**

State	During September			Jan-Sep		
	2005	2006	2006 as % of 2005	2005	2006	2006 as % of 2005
	<i>1,000</i>	<i>1,000</i>	<i>Percent</i>	<i>1,000</i>	<i>1,000</i>	<i>Percent</i>
GA	2,272	2,290	101	20,568	20,286	99
IN	5,013	4,839	97	45,762	43,869	96
IA	6,288	6,752	107	57,302	60,047	105
MN	1,130	1,037	92	9,643	8,771	91
PA	4,768	4,940	104	44,503	40,351	91
Oth Sts ¹	14,152	16,987	120	155,736	152,275	98
US	33,623	36,845	110	333,514	325,599	98

¹ Not published separately to avoid disclosing data for individual operations.

Egg-Type Chicks Hatched: By Month, United States, 2005-06

Month	By Months			Cumulative		
	2005	2006	2006 as % of 2005	2005	2006	2006 as % of 2005
	<i>1,000</i>	<i>1,000</i>	<i>Percent</i>	<i>1,000</i>	<i>1,000</i>	<i>Percent</i>
Jan	38,291	35,422	93	38,291	35,422	93
Feb	34,427	33,665	98	72,718	69,087	95
Mar	41,701	38,918	93	114,419	108,005	94
Apr	38,049	34,613	91	152,468	142,618	94
May	38,792	40,320	104	191,260	182,938	96
Jun	35,034	37,700	108	226,294	220,638	98
Jul	34,897	33,224	95	261,191	253,862	97
Aug	38,700	34,892	90	299,891	288,754	96
Sep	33,623	36,845	110	333,514	325,599	98
Oct	35,461			368,975		
Nov	32,285			401,260		
Dec	35,917			437,177		

**Intended Placements: Egg-Type Pullet Chicks for Hatchery Supply
Flocks by Month and Total, United States, 2005-06¹**

Month	Pullet Chicks Hatched		2006 as % of 2005	Cumulative Potential Plcmts Relative to Current Supply Flocks 7-18 Months Earlier ²	
	2005	2006		2006	2007
	<i>1,000</i>	<i>1,000</i>	<i>Percent</i>	<i>1,000</i>	<i>1,000</i>
Jan	157	188	120	2,837	2,842
Feb	208	196	94	2,845	2,920
Mar	314	286	91	2,788	2,912
Apr	308	255	83	2,958	2,780
May	190	241	127	2,878	
Jun	175	183	105	2,833	
Jul	242	320	132	2,845	
Aug	261	253	97	2,876	
Sep	375	243	65	2,864	
Oct	188			2,836	
Nov	180			2,783	
Dec	247			2,834	
Total	2,845				

¹ Reported by leading breeders. Coverage may not be 100 percent. Includes expected pullet chicks from eggs sold during the preceding month at the rate of 125 pullet chicks per 30 dozen case of eggs.

² For September 2006, includes breeder pullet chicks hatched Mar 2005 through Feb 2006. The 7-18 months represent the first laying cycle. Molting and additional laying cycles will increase the cumulative potential placements.

**Broiler-Type Eggs in Incubators: By Region
and United States, October 1, 2005-06**

Region	2005	2006	2006 as % of 2005
	<i>1,000</i>	<i>1,000</i>	<i>Percent</i>
North Atlantic	12,089	12,086	100
E North Central	8,913	9,181	103
W North Central	20,872	21,417	103
South Atlantic	230,672	236,703	103
South Central	333,926	331,674	99
West	25,377	21,352	84
US	631,849	632,413	100

**Broiler-Type Chicks Hatched: By State
and United States, September 2005-06**

State	During September			Jan-Sep		
	2005	2006	2006 as % of 2005	2005	2006	2006 as % of 2005
	<i>1,000</i>	<i>1,000</i>	<i>Percent</i>	<i>1,000</i>	<i>1,000</i>	<i>Percent</i>
AL	111,274	112,080	101	1,007,398	1,023,846	102
AR	107,785	106,718	99	1,006,775	986,611	98
DE	13,927	13,815	99	130,779	125,790	96
FL	4,855	4,899	101	43,961	44,164	100
GA	117,952	122,507	104	1,082,909	1,114,784	103
KY	24,832	25,719	104	230,078	231,022	100
LA	14,657	13,899	95	132,744	130,599	98
MD	31,504	30,636	97	284,109	282,265	99
MS	62,351	62,749	101	629,470	596,512	95
NC	62,610	64,205	103	594,989	602,949	101
OK	23,211	22,704	98	212,548	204,978	96
PA	14,439	13,158	91	129,345	126,750	98
SC	18,055	18,638	103	164,067	168,883	103
TX	53,828	53,491	99	496,203	491,196	99
VA	22,489	22,069	98	210,688	208,978	99
CA, MO, TN, & WV	65,339	63,195	97	591,340	580,441	98
19 Sts ¹	749,108	750,482	100	6,947,403	6,919,768	100
Oth Sts ²	22,038	21,237	96	203,876	201,416	99
US	771,146	771,719	100	7,151,279	7,121,184	100

¹ States in the weekly hatchery production estimating program.

² Not published separately to avoid disclosing data for individual operations.

Broiler-Type Chicks Hatched: By Month, United States, 2005-06

Month	By Months			Cumulative		
	2005	2006	2006 as % of 2005	2005	2006	2006 as % of 2005
	<i>1,000</i>	<i>1,000</i>	<i>Percent</i>	<i>1,000</i>	<i>1,000</i>	<i>Percent</i>
Jan	797,576	804,073	101	797,576	804,073	101
Feb	732,038	733,145	100	1,529,614	1,537,218	100
Mar	816,552	817,068	100	2,346,166	2,354,286	100
Apr	792,173	787,064	99	3,138,339	3,141,350	100
May	823,993	810,908	98	3,962,332	3,952,258	100
Jun	796,945	787,791	99	4,759,277	4,740,049	100
Jul	808,382	800,132	99	5,567,659	5,540,181	100
Aug	812,474	809,284	100	6,380,133	6,349,465	100
Sep	771,146	771,719	100	7,151,279	7,121,184	100
Oct	776,449			7,927,728		
Nov	747,866			8,675,594		
Dec	808,525			9,484,119		

**Intended Placements: Broiler-Type Pullet Chicks for Hatchery
Supply Flocks by Month and Total, 2005-06 ¹**

Month	Pullet Chicks Hatched		2006 as % of 2005	Cumulative Potential Plcmts Relative to Current Supply Flocks 7-15 Months Earlier ²	
	2005	2006		2006	2007
	<i>1,000</i>	<i>1,000</i>	<i>Percent</i>	<i>1,000</i>	<i>1,000</i>
US Place- ments					
Jan	6,409	6,825	106	62,860	64,544
Feb	7,325	7,593	104	63,060	64,056
Mar	7,077	7,012	99	63,416	64,389
Apr	6,800	6,593	97	63,776	64,340
May	7,783	7,531	97	64,311	
Jun	7,109	7,636	107	64,284	
Jul	6,657	6,456	97	64,319	
Aug	7,484	7,631	102	64,344	
Sep	7,132	7,063	99	64,154	
Oct	6,944			64,057	
Nov	7,298			63,993	
Dec	7,112			64,040	
Annual Total	85,130				
Total Place- ments ³					
Jan	7,804	8,018	103		
Feb	8,664	9,026	104		
Mar	8,709	8,415	97		
Apr	7,995	7,558	95		
May	8,995	8,930	99		
Jun	8,571	9,144	107		
Jul	7,846	7,845	100		
Aug	9,084	9,170	101		
Sep	8,683	8,742	101		
Oct	8,279				
Nov	8,830				
Dec	8,256				
Annual Total	101,716				

¹ Reported by leading breeders. Coverage may not be 100 percent. Includes expected pullet chicks from eggs sold during the preceding month at the rate of 125 pullet chicks per 30 dozen case of eggs.

² For Sep 2006, includes breeder pullet chicks hatched Jun 2005 through Feb 2006.

³ U.S. production of intended placements worldwide.

Reliability of Chicken and Eggs Estimates

Survey Procedures: Primary data for the "**Chickens and Eggs**" report are from weekly and/or monthly questionnaires sent to producers. An attempt is made to collect information for layer and egg estimates from each known contractor and independent producer who has at least 30,000 table egg layers, flocks of hatchery supply layers, or pullet only operations with at least 500 pullets. Coverage for operations with less than 30,000 table egg layers are estimated each month based on data reported in December. Approximately 650 contractors, independent egg producers, and pullet only operations are contacted each month. All known hatcheries, approximately 330, are contacted for information on a weekly and/or monthly basis.

Revision Policy: The previous month's estimates are subject to revision if late reports or corrected data indicates a different level. Additionally, revisions after the monthly report will be made at the end of the marketing year and published in the annual reports of "**Chickens and Eggs Summary**" and "**Hatchery Production**".

Reliability: Operations are mailed a questionnaire and given adequate time to respond by mail. Those that do not respond are phoned. Great care is exercised to ensure that all operations are accounted for during each survey period. However, there are usually missing reports that must be accounted for in the estimates.

Sound statistical methodology is employed to derive estimates from the reported data. All data are checked for unusual values. All operations' data are compared to their own past operating profiles and also to trends from other operations. Data for missing operations are estimated based on similar operations or historical data. Survey data are subject to non-sampling errors such as omissions and mistakes in reporting and in processing. While these errors cannot be measured directly, they are minimized by reviewing all data for consistency and reasonableness.

Egg-type chicks hatched consist of all chicks of egg-type domesticated breeds including males and chicks destined for hatchery supply flocks and research purposes. The relationship of chicks hatched to chicken inventory and poultry marketings is carefully monitored. The disposition of egg-type chicks hatched prior to placement into the laying flock can vary significantly, which can make comparisons to changes in layer inventory inconsistent over time.

Intended placement data reported by leading breeders include pullet chicks expected from eggs sold the preceding month. The breeders in this report account for a large percentage of replacement pullets for hatchery supply flocks. Production of replacement pullets by these breeders indicates the number of pullets available to hatchery supply flocks several months before the pullets will actually move into the flocks. "Hatchery Supply Flocks" include all generations of layers which could lay eggs to supply a hatchery. This includes the generations of parents, grandparents, great-grandparents, pedigree, etc. Also included are research flocks, vaccine flocks, and specific pathogen-free flocks. The broiler cumulative potential placements are a moving total of the intended placements 7-15 months earlier. The egg-type cumulative potential placements of 7-18 months represent the first laying cycle. Molting and additional laying cycles will increase the cumulative potential placements of egg-type hatching flocks.

Information Contacts

Listed below are the commodity specialists in the Livestock Branch of the National Agricultural Statistics Service to contact for additional information.

Dan Kerestes, Chief, Livestock Branch	(202) 720-3570
Darin Jantzi, Head, Poultry and Specialty Commodities Section	(202) 720-3570
David Colwell - Cold Storage	(202) 720-8784
Fleming Gibson - Egg Products, Poultry Slaughter, Catfish Processing, Mink, Turkey Hatchery	(202) 690-3237
Darin Jantzi - Turkeys Raised, Catfish Production, Trout Production, Census of Aquaculture	(202) 720-3570
Sharyn Lavender - Layers, Eggs, Broiler Hatchery, Chicken Hatchery, Honey	(202) 720-3244

ACCESS TO REPORTS!!

For your convenience, there are several ways to obtain NASS reports, data products, and services:

INTERNET ACCESS

All NASS reports are available free of charge on the worldwide Internet. For access, connect to the Internet and go to the NASS Home Page at: www.nass.usda.gov.

E-MAIL SUBSCRIPTION

All NASS reports are available by subscription free of charge direct to your e-mail address. Starting with the NASS Home Page at www.nass.usda.gov, under the right navigation, *Receive reports by Email*, click on **National** or **State**. Follow the instructions on the screen.

PRINTED REPORTS OR DATA PRODUCTS

CALL OUR TOLL-FREE ORDER DESK: 800-999-6779 (U.S. and Canada)
Other areas, please call 703-605-6220 FAX: 703-605-6900
(Visa, MasterCard, check, or money order acceptable for payment.)

ASSISTANCE

For **assistance** with general agricultural statistics or further information about NASS or its products or services, contact the **Agricultural Statistics Hotline** at **800-727-9540**, 7:30 a.m. to 4:00 p.m. ET, or e-mail: nass@nass.usda.gov.

The U.S. Department of Agriculture (USDA) prohibits discrimination in all its programs and activities on the basis of race, color, national origin, age, disability, and where applicable, sex, marital status, familial status, parental status, religion, sexual orientation, genetic information, political beliefs, reprisal, or because all or part of an individual's income is derived from any public assistance program. (Not all prohibited bases apply to all programs.) Persons with disabilities who require alternative means for communication of program information (Braille, large print, audiotape, etc.) should contact USDA's TARGET Center at (202) 720-2600 (voice and TDD).

To file a complaint of discrimination, write to USDA, Director, Office of Civil Rights, 1400 Independence Avenue, S.W., Washington, D.C. 20250-9410, or call (800) 795-3272 (voice) or (202) 720-6382 (TDD). USDA is an equal opportunity provider and employer.