



NASS

FACT FINDERS FOR AGRICULTURE
UNITED STATES DEPARTMENT OF AGRICULTURE

Washington, D.C.

Chickens And Eggs

Released November 21, 2006, by the National Agricultural Statistics Service (NASS), Agricultural Statistics Board, U.S. Department of Agriculture. For information on *Chickens and Eggs* call Sharyn Lavender at (202) 720-3244, office hours 7:30 a.m. to 4:00 p.m. ET.

October Egg Production Up Slightly

U.S. egg production totaled 7.67 billion during October 2006, up slightly from last year. Production included 6.60 billion table eggs, and 1.07 billion hatching eggs, of which 1.00 billion were broiler-type and 67 million were egg-type. The total number of layers during October 2006 averaged 344 million, up slightly from last year. October egg production per 100 layers was 2,231 eggs, down slightly from October 2005.

All layers in the U.S. on November 1, 2006 totaled 344 million, up slightly from last year. The 344 million layers consisted of 288 million layers producing table or market type eggs, 53.2 million layers producing broiler-type hatching eggs, and 2.79 million layers producing egg-type hatching eggs. Rate of lay per day on November 1, 2006, averaged 72.2 eggs per 100 layers, down slightly from November 1, 2005.

Egg-Type Chicks Hatched Up 2 Percent

Egg-type chicks hatched during October 2006 totaled 36.3 million, up 2 percent from October 2005. Eggs in incubators totaled 32.8 million on November 1, 2006, down 3 percent from a year ago.

Domestic placements of egg-type pullet chicks for future hatchery supply flocks by leading breeders totaled 223,000 during October 2006, up 19 percent from October 2005.

Broiler-Type Chicks Hatched Down 1 Percent

Broiler-type chicks hatched during October 2006 totaled 772 million, down 1 percent from October 2005. Eggs in incubators totaled 608 million on November 1, 2006, down 2 percent from a year earlier.

Leading breeders placed 6.74 million broiler-type pullet chicks for future domestic hatchery supply flocks during October 2006, down 3 percent from October 2005.

Contents

Page

U.S. Average Number of Layers on Hand and Egg Production	1
U.S. Layers on Hand and Eggs Produced by Type, Forced Molt, and Pullets	3
Layers on Hand and Eggs Produced by State	5
Egg Production by Type and State	7
Forced Molt	9
Egg-Type Hatchery	11
Egg-Type Intended Placements	13
Broiler-Type Hatchery	13
Broiler-Type Intended Placements	15
Procedures and Reliability	16
Information Contacts	16

**All Layers: Average Number on Hand During the Month,
United States, 2004-06**

Month	2004	2005	2006
	<i>1,000 Layers</i>	<i>1,000 Layers</i>	<i>1,000 Layers</i>
Dec ¹	339,305	345,618	348,545
Jan	337,948	347,864	349,246
Feb	338,905	348,791	349,764
Mar	340,699	346,959	350,088
Apr	341,550	343,574	348,154
May	341,562	341,819	344,718
Jun	342,513	339,856	342,175
Jul	343,180	338,573	340,743
Aug	343,653	339,351	341,007
Sep ²	344,452	340,914	342,611
Oct	345,075	342,823	343,776
Nov	344,633	345,874	

¹ December preceding year.

² Revised 2006 only.

**Eggs: Production During the Month by Type,
United States, 2005-06 ¹**

Month	Total Eggs		Table Eggs		Hatching Eggs	
	2005	2006	2005	2006	2005	2006
	<i>Million Eggs</i>	<i>Million Eggs</i>	<i>Million Eggs</i>	<i>Million Eggs</i>	<i>Million Eggs</i>	<i>Million Eggs</i>
Dec ²	7,721	7,791	6,636	6,703	1,086	1,088
Jan	7,626	7,721	6,526	6,624	1,101	1,097
Feb	6,928	6,977	5,915	5,988	1,014	989
Mar	7,738	7,837	6,610	6,735	1,129	1,103
Apr	7,407	7,535	6,311	6,469	1,097	1,066
May	7,572	7,627	6,439	6,520	1,133	1,107
Jun	7,346	7,393	6,250	6,338	1,096	1,056
Jul	7,563	7,636	6,444	6,551	1,120	1,085
Aug	7,528	7,635	6,425	6,556	1,104	1,079
Sep ³	7,348	7,420	6,279	6,379	1,070	1,041
Oct	7,665	7,671	6,561	6,604	1,104	1,067
Nov	7,514		6,459		1,055	
During Year	89,960		76,859		13,103	

¹ Totals may not add due to rounding.

² December preceding year.

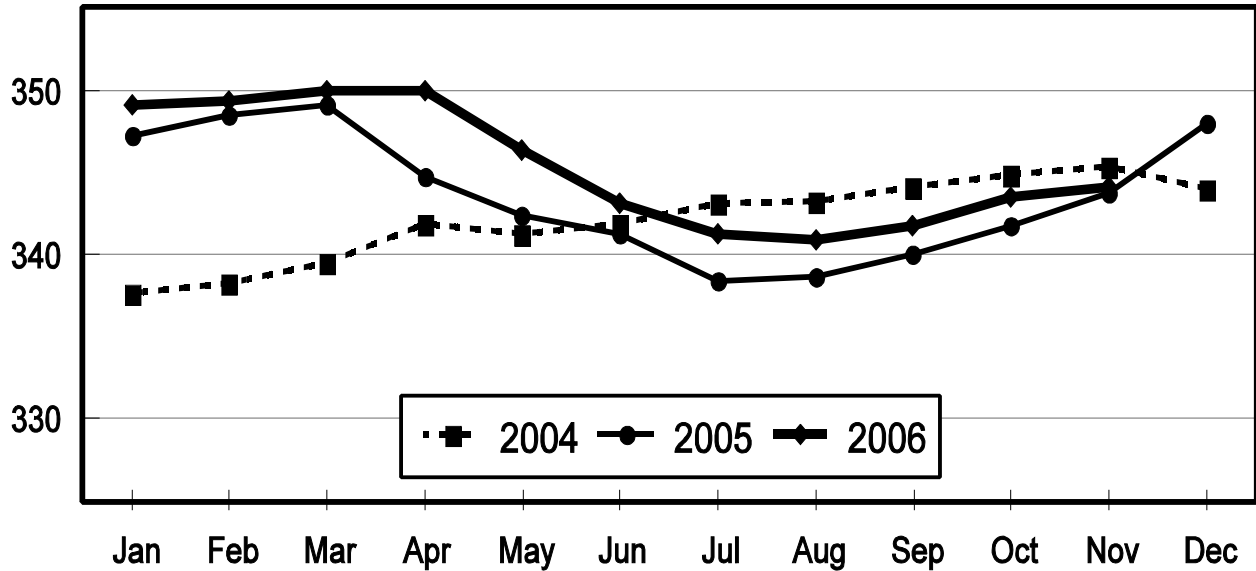
³ Revised 2006 only.

All Layers: Inventory

United States, 2004 - 2006

First of the Month

Million Layers

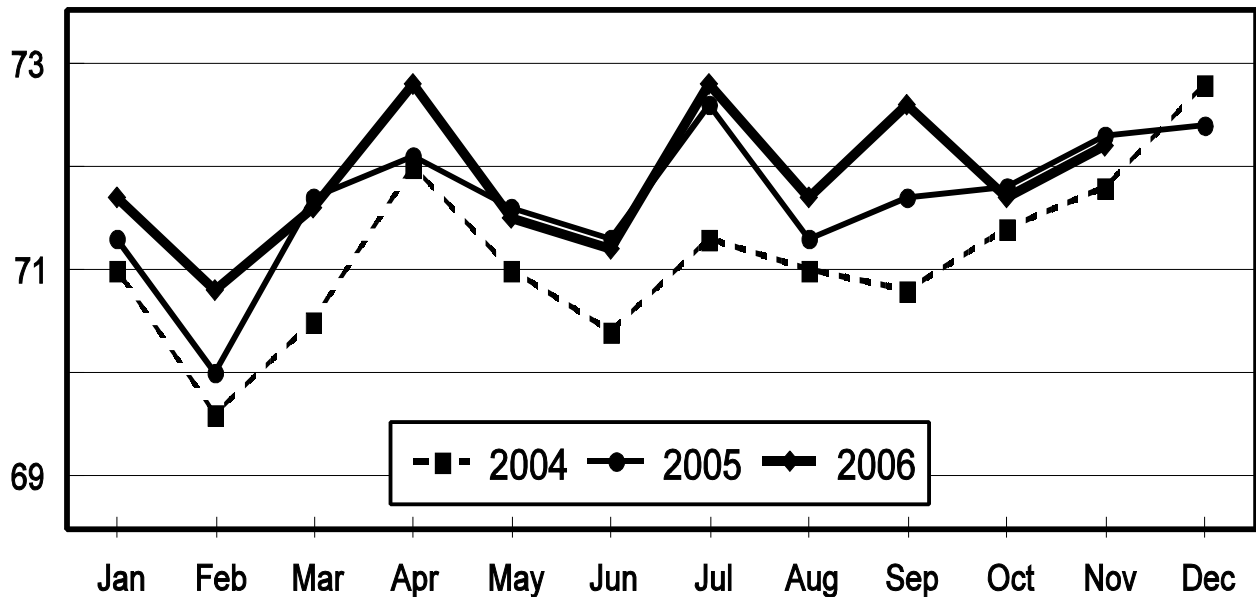


All Layers: Rate of Lay

United States, 2004 - 2006

First of the Month

Eggs Per 100 Layers



**Layers and Eggs: Layers on Hand and Eggs Produced by Type,
and Forced Molt, United States, September-October 2005-06 ¹**

Item	Unit	2005	2006 ²	2006 as % of 2005
Layers During Sep	1,000			
All Layers		340,914	342,611	100
Table Egg Type		283,098	286,342	101
Hatching Egg Type		57,816	56,269	97
Broiler-Type Hatching		55,222	53,552	97
Egg-Type Hatching		2,594	2,717	105
Eggs per 100 Layers During Sep	Number			
All Layers		2,155	2,166	101
Table Egg Type		2,218	2,228	100
Hatching Egg Type		1,851	1,850	100
Broiler-Type Hatching		1,829	1,824	100
Egg-Type Hatching		2,313	2,356	102
Eggs Produced During Sep	Million			
All Layers		7,348	7,420	101
Table Egg Type		6,279	6,379	102
Hatching Egg Type		1,070	1,041	97
Broiler-Type Hatching		1,010	977	97
Egg-Type Hatching		60	64	107
Layers on Oct 1	1,000			
All Layers		341,803	343,436	100
Table Egg Type		284,359	287,575	101
Hatching Egg Type		57,444	55,861	97
Broiler-Type Hatching		54,960	53,160	97
Egg-Type Hatching		2,484	2,701	109
Eggs per 100 Layers on Oct 1	Number			
All Layers		71.8	71.7	100
Table Egg Type		73.8	73.6	100
Hatching Egg Type		62.0	61.8	100
Broiler-Type Hatching		61.3	61.0	100
Egg-Type Hatching		78.7	79.5	101
Forced Molt Layers on Oct 1	Percent			
Percent Being Molted		3.9	4.2	108
Percent with Molt Completed		23.4	25.8	110
Layers Sold for Slaughter During Sep	1,000	15,785	12,883	82
Layers Rendered, Died, Destroyed, Composted or Disappeared For Any Reason During Sep	1,000	6,927	6,776	98
Pullets on Oct 1	1,000	98,604	98,718	100
Pullets Added During Sep ³	1,000	23,681	22,251	94

¹ Totals may not add due to rounding.

² Revised.

³ Pullet chicks less than 3 days old added to pullet flocks.

**Layers and Eggs: Layers on Hand and Eggs Produced by Type,
and Forced Molt, United States, October-November 2005-06 ¹**

Item	Unit	2005	2006	2006 as % of 2005
Layers During Oct	1,000			
All Layers		342,823	343,776	100
Table Egg Type		285,212	287,839	101
Hatching Egg Type		57,611	55,937	97
Broiler-Type Hatching		55,104	53,188	97
Egg-Type Hatching		2,507	2,749	110
Eggs per 100 Layers During Oct	Number			
All Layers		2,236	2,231	100
Table Egg Type		2,300	2,294	100
Hatching Egg Type		1,916	1,908	100
Broiler-Type Hatching		1,893	1,880	99
Egg-Type Hatching		2,433	2,437	100
Eggs Produced During Oct	Million			
All Layers		7,665	7,671	100
Table Egg Type		6,561	6,604	101
Hatching Egg Type		1,104	1,067	97
Broiler-Type Hatching		1,043	1,000	96
Egg-Type Hatching		61	67	110
Layers on Nov 1	1,000			
All Layers		343,789	344,076	100
Table Egg Type		286,036	288,079	101
Hatching Egg Type		57,753	55,997	97
Broiler-Type Hatching		55,234	53,205	96
Egg-Type Hatching		2,519	2,792	111
Eggs per 100 Layers on Nov 1	Number			
All Layers		72.3	72.2	100
Table Egg Type		74.5	74.3	100
Hatching Egg Type		61.1	61.2	100
Broiler-Type Hatching		60.3	60.4	100
Egg-Type Hatching		78.9	76.7	97
Forced Molt Layers on Nov 1	Percent			
Percent Being Molted		3.1	2.9	94
Percent with Molt Completed		24.3	25.9	107
Layers Sold for Slaughter During Oct	1,000	13,369	11,473	86
Layers Rendered, Died, Destroyed, Composted or Disappeared For Any Reason During Oct	1,000	5,795	7,199	124
Pullets on Nov 1	1,000	98,194	98,048	100
Pullets Added During Oct ²	1,000	22,107	20,438	92

¹ Totals may not add due to rounding.

² Pullet chicks less than 3 days old added to pullet flocks.

**Layers and Eggs: Layers on Hand and Eggs Produced by State
and United States, During September 2005-06**

State	Table Egg Layers in Flocks 30,000 and Above		All Layers ¹		Eggs per 100 for All Layers ¹	
	2005	2006 ²	2005	2006 ²	2005	2006 ²
	<i>1,000</i>	<i>1,000</i>	<i>1,000</i>	<i>1,000</i>	<i>Number</i>	<i>Number</i>
AL	1,717	1,660	9,034	8,748	1,838	1,875
AR	4,344	4,489	14,448	13,964	1,938	1,905
CA	18,609	18,540	19,134	19,006	2,132	2,157
CO	3,300	3,356	3,865	3,851	2,251	2,389
CT	2,906	2,605	2,965	2,662	2,293	2,367
FL	10,859	10,220	11,354	10,616	2,202	2,195
GA	9,768	9,607	18,944	18,828	2,027	2,045
HI	473	411	496	427	1,774	1,780
IL	4,298	4,832	4,526	5,076	2,298	2,266
IN	22,918	23,670	23,676	24,373	2,192	2,220
IA	48,119	50,415	48,826	51,155	2,198	2,178
ME	4,083	3,923	4,149	3,994	1,976	2,103
MD	2,590	2,582	2,691	2,706	2,341	2,254
MI	7,548	8,870	7,798	9,121	2,270	2,237
MN	10,622	10,373	11,140	10,838	2,208	2,178
MS	1,671	1,633	6,844	6,257	1,999	1,998
MO	5,637	6,180	6,918	7,267	2,197	2,202
NE	11,837	11,481	11,912	11,556	2,275	2,241
NY	3,896	4,019	4,219	4,277	2,299	2,315
NC	3,523	3,576	11,011	11,157	1,934	1,954
OH	27,377	27,479	27,875	28,003	2,242	2,196
OR	2,802	2,496	2,995	2,661	2,270	2,405
PA	21,715	21,281	23,523	23,180	2,240	2,338
SC	3,690	3,647	4,881	4,865	2,151	2,097
SD	3,089	3,144	3,189	3,244	2,101	2,158
TX	13,094	14,374	17,409	18,723	2,143	2,217
VA	1,411	1,337	3,378	3,201	2,043	2,031
WA	4,825	4,714	4,886	4,775	2,231	2,262
WI	4,305	4,012	4,795	4,515	2,211	2,259
Oth Sts ³	16,145	15,632	24,033	23,565	2,164	2,122
US	277,171	280,558	340,914	342,611	2,155	2,166

¹ Includes all layers and eggs produced in both table egg and hatching egg flocks regardless of size.

² Revised.

³ Not published separately to avoid disclosing data for individual operations.

**Layers and Eggs: Layers on Hand and Eggs Produced by State
and United States, During October 2005-06**

State	Table Egg Layers in Flocks 30,000 and Above		All Layers ¹		Eggs per 100 for All Layers ¹	
	2005	2006	2005	2006	2005	2006
	<i>1,000</i>	<i>1,000</i>	<i>1,000</i>	<i>1,000</i>	<i>Number</i>	<i>Number</i>
AL	1,727	1,748	9,120	8,779	1,897	1,936
AR	4,499	4,554	14,790	13,888	2,008	1,966
CA	18,676	18,593	19,201	19,060	2,219	2,225
CO	3,174	3,309	3,733	3,790	2,411	2,427
CT	2,946	2,665	3,001	2,725	2,333	2,422
FL	11,030	10,307	11,526	10,703	2,264	2,261
GA	9,911	9,609	18,957	18,792	2,168	2,113
HI	475	403	496	419	1,855	1,814
IL	4,402	4,809	4,626	5,053	2,399	2,395
IN	23,066	23,633	23,788	24,322	2,299	2,286
IA	48,694	51,001	49,351	51,765	2,286	2,249
ME	3,958	3,897	4,019	3,967	2,065	2,117
MD	2,459	2,609	2,578	2,746	2,366	2,331
MI	7,520	8,866	7,770	9,117	2,342	2,347
MN	10,732	10,657	11,243	11,118	2,313	2,204
MS	1,664	1,634	6,871	6,242	1,994	2,051
MO	5,626	6,260	6,849	7,348	2,292	2,286
NE	11,848	11,531	11,923	11,606	2,273	2,292
NY	3,781	4,143	4,105	4,394	2,412	2,367
NC	3,412	3,688	10,832	11,205	2,031	2,008
OH	27,517	27,136	28,036	27,644	2,265	2,236
OR	2,710	2,561	2,893	2,741	2,454	2,517
PA	22,026	21,496	23,778	23,367	2,317	2,388
SC	3,840	3,620	5,037	4,829	2,204	2,236
SD	3,218	3,110	3,318	3,210	2,140	2,243
TX	13,480	14,465	17,790	18,798	2,254	2,325
VA	1,493	1,331	3,444	3,205	2,149	2,153
WA	4,888	4,755	4,949	4,816	2,223	2,326
WI	4,352	4,001	4,847	4,519	2,311	2,191
Oth Sts ²	16,160	15,664	23,952	23,608	2,238	2,194
US	279,284	282,055	342,823	343,776	2,236	2,231

¹ Includes all layers and eggs produced in both table egg and hatching egg flocks regardless of size.

² Not published separately to avoid disclosing data for individual operations.

**Egg Production: By Type, State, and United States,
September 2005-06 ¹**

State	Total Production		Table Eggs ²		Hatching Eggs ²	
	2005	2006 ³	2005	2006 ³	2005	2006 ³
	<i>Million Eggs</i>	<i>Million Eggs</i>	<i>Million Eggs</i>	<i>Million Eggs</i>	<i>Million Eggs</i>	<i>Million Eggs</i>
AL	166	164	36	37	130	127
AR	280	266	98	99	182	167
CA	408	410				
CO	87	92				
CT	68	63				
FL	250	233	243	226	7	7
GA	384	385	210	213	174	172
HI	8.8	7.6	8.8	7.6	0	0
IL	104	115	101	111	3	4
IN	519	541	507	529	12	12
IA	1,073	1,114				
ME	82	84				
MD	63	61	62	59	1	2
MI	177	204				
MN	246	236	238	228	8	8
MS	130	125	38	37	92	88
MO	152	160				
NE	271	259	271	259	0	0
NY	97	99				
NC	213	218	82	85	131	133
OH	625	615				
OR	68	64	66	62	2	2
PA	527	542	510	522	17	20
SC	105	102	85	81	20	21
SD	67	70	67	70	0	0
TX	373	415				
VA	69	65	32	32	37	33
WA	109	108				
WI	106	102				
Oth Sts ⁴	520	500	397	378	124	122
US	7,348	7,420	6,279	6,379	1,070	1,041

¹ Totals may not add due to rounding.

² Data by type of flock not shown for some States to avoid disclosing individual operations, data included in US totals.

³ Revised.

⁴ Not published separately to avoid disclosing data for individual operations.

**Egg Production: By Type, State, and United States,
October 2005-06 ¹**

State	Total Production		Table Eggs ²		Hatching Eggs ²	
	2005	2006	2005	2006	2005	2006
	<i>Million Eggs</i>	<i>Million Eggs</i>	<i>Million Eggs</i>	<i>Million Eggs</i>	<i>Million Eggs</i>	<i>Million Eggs</i>
AL	173	170	39	40	134	130
AR	297	273	106	104	191	169
CA	426	424				
CO	90	92				
CT	70	66				
FL	261	242	253	235	8	7
GA	411	397	234	219	177	178
HI	9.2	7.6	9.2	7.6	0	0
IL	111	121	108	117	3	4
IN	547	556	535	544	12	12
IA	1,128	1,164				
ME	83	84				
MD	61	64	59	62	2	2
MI	182	214				
MN	260	245	252	237	8	8
MS	137	128	40	39	97	89
MO	157	168				
NE	271	266	271	266	0	0
NY	99	104				
NC	220	225	85	88	135	137
OH	635	618				
OR	71	69	69	67	2	2
PA	551	558	535	538	16	20
SC	111	108	90	86	21	22
SD	71	72	71	72	0	0
TX	401	437				
VA	74	69	36	35	38	34
WA	110	112				
WI	112	99				
Oth Sts ³	536	518	408	392	128	126
US	7,665	7,671	6,561	6,604	1,104	1,067

¹ Totals may not add due to rounding.

² Data by type of flock not shown for some States to avoid disclosing individual operations, data included in US totals.

³ Not published separately to avoid disclosing data for individual operations.

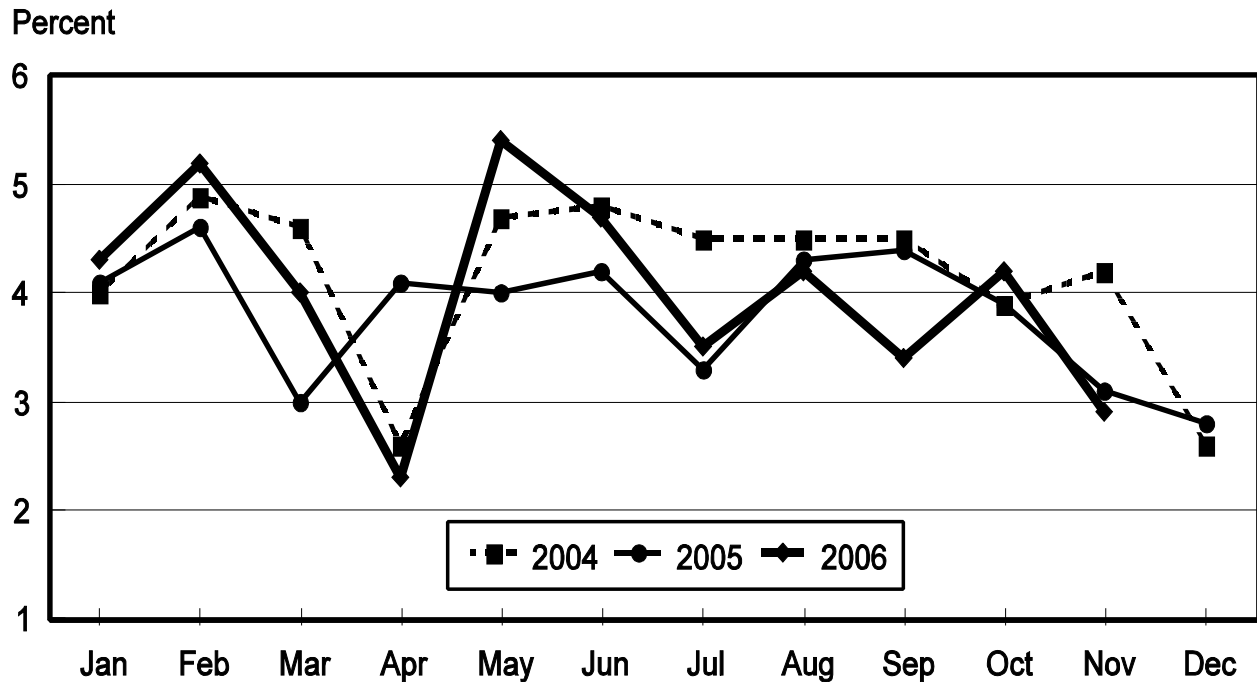
**Forced Molt: Percent of All Layers by Month,
United States, 2005-06 ¹**

Month	Percent Being Molted		Percent with Molt Completed	
	2005	2006	2005	2006
	<i>Percent</i>	<i>Percent</i>	<i>Percent</i>	<i>Percent</i>
Jan	4.1	4.3	23.2	23.0
Feb	4.6	5.2	21.7	23.8
Mar	3.0	4.0	22.8	24.4
Apr	4.1	2.3	22.7	24.9
May	4.0	5.4	22.4	23.6
Jun	4.2	4.7	23.0	24.7
Jul	3.3	3.5	22.6	25.7
Aug	4.3	4.2	22.1	25.2
Sep	4.4	3.4	22.4	25.9
Oct ²	3.9	4.2	23.4	25.8
Nov	3.1	2.9	24.3	25.9
Dec	2.8		23.7	

¹ As of first of month.

² Revised 2006 only.

**All Layers: Percent Being Molted
United States, 2004 - 2006
First of the Month**



**Forced Molt: Percent of All Layers by State
and United States, November 2005-06 ¹**

State	Percent Being Molted		Percent with Molt Completed	
	2005	2006	2005	2006
	<i>Percent</i>	<i>Percent</i>	<i>Percent</i>	<i>Percent</i>
AL	1.5	1.0	7.0	5.0
AR	1.0	0.0	11.0	15.5
CA	3.5	3.0	36.5	36.5
CO	3.0	4.0	23.5	21.5
CT	5.5	0.0	9.5	16.0
FL	6.5	6.0	31.5	39.0
GA	2.0	2.5	14.0	13.5
HI	8.0	9.5	54.5	65.5
IL	0.0	1.5	33.0	32.0
IN	2.0	2.5	29.5	33.0
IA	3.5	3.0	37.0	35.5
ME	0.0	0.0	0.0	0.0
MD	7.0	3.5	40.0	43.5
MI	1.5	4.5	25.0	25.0
MN	0.5	3.5	26.5	33.5
MS	2.0	1.0	9.0	13.0
MO	0.0	1.0	22.0	22.0
NE	9.0	4.0	30.0	23.0
NY	3.0	2.0	8.5	12.0
NC	1.5	0.0	8.5	10.0
OH	4.5	6.0	16.0	25.0
OR	4.5	7.5	37.0	31.0
PA	2.0	3.5	21.0	18.0
SC	14.5	7.5	14.5	36.5
SD	4.0	5.0	19.0	22.0
TX	0.5	2.0	25.0	25.5
VA	0.0	0.0	15.5	20.5
WA	4.0	4.5	41.0	43.5
WI	3.5	2.5	35.0	27.0
Oth Sts ²	3.9	1.8	24.9	26.0
US	3.1	2.9	24.3	25.9

¹ As of first of month.

² Not published separately to avoid disclosing data for individual operations.

**Hatchery Production: Eggs in Incubators, Chicks Hatched,
and Placements by Type, United States, October-November 2005-06**

Item	2005	2006	2006 as % of 2005
	<i>1,000</i>	<i>1,000</i>	<i>Percent</i>
Egg-Type			
Eggs in Incubators on Nov 1	33,721	32,762	97
Chicks Hatched During Oct	35,461	36,271	102
Chicks Hatched Jan thru Oct	368,975	361,870	98
Pullets Hatched During Oct for Intended Placements in Hatchery Supply Flocks 7-18 Months Earlier ¹	188 2,876	223 2,836	119 99
Broiler-Type			
Eggs in Incubators on Nov 1	623,102	608,412	98
Chicks Hatched During Oct	776,449	771,822	99
Chicks Hatched Jan thru Oct	7,927,728	7,893,006	100
Pullets Hatched During Oct for Intended Placements in Hatchery Supply Flocks 7-15 Months Earlier ²	6,944 62,894	6,744 64,057	97 102

¹ 2006 includes pullet chicks hatched Apr 2005 through Mar 2006.

² 2006 includes pullet chicks hatched Jul 2005 through Mar 2006.

**Egg-Type Eggs in Incubators: By Region and United States,
November 1, 2005-06**

Region	2005	2006	2006 as % of 2005
	<i>1,000</i>	<i>1,000</i>	<i>Percent</i>
North Atlantic	5,655	5,917	105
E North Central	6,475	6,427	99
W North Central	6,902	7,904	115
South Atlantic	3,514	3,938	112
South Central	5,591	4,668	83
West	5,584	3,908	70
US	33,721	32,762	97

Regions:

North Atlantic = CT, ME, MA, NH, NJ, NY, PA, RI, VT.

E North Central = IL, IN, MI, OH, WI.

W North Central = IA, KS, MN, MO, NE, ND, SD.

South Atlantic = DE, FL, GA, MD, NC, SC, VA, WV.

South Central = AL, AR, KY, LA, MS, OK, TN, TX.

West = AK, AZ, CA, CO, HI, ID, MT, NM, NV, OR, UT, WA, WY.

**Egg-Type Chicks Hatched: By State and United States,
October 2005-06**

State	During October			Jan-Oct		
	2005	2006	2006 as % of 2005	2005	2006	2006 as % of 2005
	<i>1,000</i>	<i>1,000</i>	<i>Percent</i>	<i>1,000</i>	<i>1,000</i>	<i>Percent</i>
GA	2,371	2,319	98	22,939	22,605	99
IN	5,293	4,901	93	51,055	48,770	96
IA	5,725	7,410	129	63,027	67,457	107
MN	1,126	980	87	10,769	9,751	91
PA	4,343	4,556	105	48,846	44,907	92
Oth Sts ¹	16,603	16,105	97	172,339	168,380	98
US	35,461	36,271	102	368,975	361,870	98

¹ Not published separately to avoid disclosing data for individual operations.

Egg-Type Chicks Hatched: By Month, United States, 2005-06

Month	By Months			Cumulative		
	2005	2006	2006 as % of 2005	2005	2006	2006 as % of 2005
	<i>1,000</i>	<i>1,000</i>	<i>Percent</i>	<i>1,000</i>	<i>1,000</i>	<i>Percent</i>
Jan	38,291	35,422	93	38,291	35,422	93
Feb	34,427	33,665	98	72,718	69,087	95
Mar	41,701	38,918	93	114,419	108,005	94
Apr	38,049	34,613	91	152,468	142,618	94
May	38,792	40,320	104	191,260	182,938	96
Jun	35,034	37,700	108	226,294	220,638	98
Jul	34,897	33,224	95	261,191	253,862	97
Aug	38,700	34,892	90	299,891	288,754	96
Sep	33,623	36,845	110	333,514	325,599	98
Oct	35,461	36,271	102	368,975	361,870	98
Nov	32,285			401,260		
Dec	35,917			437,177		

**Intended Placements: Egg-Type Pullet Chicks for Hatchery Supply
Flocks by Month and Total, United States, 2005-06¹**

Month	Pullet Chicks Hatched		2006 as % of 2005	Cumulative Potential Plcmts Relative to Current Supply Flocks 7-18 Months Earlier ²	
	2005	2006		2006	2007
	<i>1,000</i>	<i>1,000</i>	<i>Percent</i>	<i>1,000</i>	<i>1,000</i>
Jan	157	188	120	2,837	2,842
Feb	208	196	94	2,845	2,920
Mar	314	286	91	2,788	2,912
Apr	308	255	83	2,958	2,785
May	190	241	127	2,878	2,820
Jun	175	183	105	2,833	
Jul	242	320	132	2,845	
Aug	261	253	97	2,876	
Sep ³	375	248	66	2,864	
Oct	188	223	119	2,836	
Nov	180			2,783	
Dec	247			2,834	
Total	2,845				

¹ Reported by leading breeders. Coverage may not be 100 percent. Includes expected pullet chicks from eggs sold during the preceding month at the rate of 125 pullet chicks per 30 dozen case of eggs.

² For October 2006, includes breeder pullet chicks hatched Apr 2005 through Mar 2006. The 7-18 months represent the first laying cycle. Molting and additional laying cycles will increase the cumulative potential placements.

³ Revision to 2006 pullet chicks hatched and cumulative placements for April 2007.

**Broiler-Type Eggs in Incubators: By Region
and United States, November 1, 2005-06**

Region	2005	2006	2006 as % of 2005
	<i>1,000</i>	<i>1,000</i>	<i>Percent</i>
North Atlantic	11,487	10,904	95
E North Central	8,415	9,054	108
W North Central	20,833	18,754	90
South Atlantic	228,266	231,300	101
South Central	328,799	315,244	96
West	25,302	23,156	92
US	623,102	608,412	98

**Broiler-Type Chicks Hatched: By State
and United States, October 2005-06**

State	During October			Jan-Oct		
	2005	2006	2006 as % of 2005	2005	2006	2006 as % of 2005
	<i>1,000</i>	<i>1,000</i>	<i>Percent</i>	<i>1,000</i>	<i>1,000</i>	<i>Percent</i>
AL	111,950	112,074	100	1,119,348	1,135,920	101
AR	109,949	103,605	94	1,116,724	1,090,216	98
DE	14,390	14,147	98	145,169	139,937	96
FL	5,109	5,051	99	49,070	49,215	100
GA	119,293	123,370	103	1,202,202	1,238,154	103
KY	24,531	26,201	107	254,609	257,223	101
LA	14,547	14,253	98	147,291	144,852	98
MD	31,707	31,403	99	315,816	313,668	99
MS	66,023	62,867	95	695,493	659,379	95
NC	64,184	66,356	103	659,173	669,305	102
OK	23,265	23,452	101	235,813	228,430	97
PA	14,644	14,307	98	143,989	141,057	98
SC	18,280	19,426	106	182,347	188,309	103
TX	52,052	53,684	103	548,255	544,880	99
VA	22,836	22,665	99	233,524	231,643	99
CA, MO, TN, & WV	64,593	60,576	94	655,933	641,017	98
19 Sts ¹	757,353	753,437	99	7,704,756	7,673,205	100
Oth Sts ²	19,096	18,385	96	222,972	219,801	99
US	776,449	771,822	99	7,927,728	7,893,006	100

¹ States in the weekly hatchery production estimating program.

² Not published separately to avoid disclosing data for individual operations.

Broiler-Type Chicks Hatched: By Month, United States, 2005-06

Month	By Months			Cumulative		
	2005	2006	2006 as % of 2005	2005	2006	2006 as % of 2005
	<i>1,000</i>	<i>1,000</i>	<i>Percent</i>	<i>1,000</i>	<i>1,000</i>	<i>Percent</i>
Jan	797,576	804,073	101	797,576	804,073	101
Feb	732,038	733,145	100	1,529,614	1,537,218	100
Mar	816,552	817,068	100	2,346,166	2,354,286	100
Apr	792,173	787,064	99	3,138,339	3,141,350	100
May	823,993	810,908	98	3,962,332	3,952,258	100
Jun	796,945	787,791	99	4,759,277	4,740,049	100
Jul	808,382	800,132	99	5,567,659	5,540,181	100
Aug	812,474	809,284	100	6,380,133	6,349,465	100
Sep	771,146	771,719	100	7,151,279	7,121,184	100
Oct	776,449	771,822	99	7,927,728	7,893,006	100
Nov	747,866			8,675,594		
Dec	808,525			9,484,119		

**Intended Placements: Broiler-Type Pullet Chicks for Hatchery
Supply Flocks by Month and Total, 2005-06 ¹**

Month	Pullet Chicks Hatched		2006 as % of 2005	Cumulative Potential Plcmts Relative to Current Supply Flocks 7-15 Months Earlier ²	
	2005	2006		2006	2007
	<i>1,000</i>	<i>1,000</i>	<i>Percent</i>	<i>1,000</i>	<i>1,000</i>
US Place- ments					
Jan	6,409	6,825	106	62,860	64,544
Feb	7,325	7,593	104	63,060	64,056
Mar	7,077	7,012	99	63,416	64,389
Apr	6,800	6,593	97	63,776	64,340
May	7,783	7,531	97	64,311	64,259
Jun	7,109	7,636	107	64,284	
Jul	6,657	6,456	97	64,319	
Aug	7,484	7,631	102	64,344	
Sep	7,132	7,063	99	64,154	
Oct	6,944	6,744	97	64,057	
Nov	7,298			63,993	
Dec	7,112			64,040	
Annual Total	85,130				
Total Place- ments ³					
Jan	7,804	8,018	103		
Feb	8,664	9,026	104		
Mar	8,709	8,415	97		
Apr	7,995	7,558	95		
May	8,995	8,930	99		
Jun	8,571	9,144	107		
Jul	7,846	7,845	100		
Aug	9,084	9,170	101		
Sep	8,683	8,742	101		
Oct	8,279	8,028	97		
Nov	8,830				
Dec	8,256				
Annual Total	101,716				

¹ Reported by leading breeders. Coverage may not be 100 percent. Includes expected pullet chicks from eggs sold during the preceding month at the rate of 125 pullet chicks per 30 dozen case of eggs.

² For Oct 2006, includes breeder pullet chicks hatched Jul 2005 through Mar 2006.

³ U.S. production of intended placements worldwide.

Reliability of Chicken and Eggs Estimates

Survey Procedures: Primary data for the "**Chickens and Eggs**" report are from weekly and/or monthly questionnaires sent to producers. An attempt is made to collect information for layer and egg estimates from each known contractor and independent producer who has at least 30,000 table egg layers, flocks of hatchery supply layers, or pullet only operations with at least 500 pullets. Coverage for operations with less than 30,000 table egg layers are estimated each month based on data reported in December. Approximately 650 contractors, independent egg producers, and pullet only operations are contacted each month. All known hatcheries, approximately 330, are contacted for information on a weekly and/or monthly basis.

Revision Policy: The previous month's estimates are subject to revision if late reports or corrected data indicates a different level. Additionally, revisions after the monthly report will be made at the end of the marketing year and published in the annual reports of "**Chickens and Eggs Summary**" and "**Hatchery Production**".

Reliability: Operations are mailed a questionnaire and given adequate time to respond by mail. Those that do not respond are phoned. Great care is exercised to ensure that all operations are accounted for during each survey period. However, there are usually missing reports that must be accounted for in the estimates.

Sound statistical methodology is employed to derive estimates from the reported data. All data are checked for unusual values. All operations' data are compared to their own past operating profiles and also to trends from other operations. Data for missing operations are estimated based on similar operations or historical data. Survey data are subject to non-sampling errors such as omissions and mistakes in reporting and in processing. While these errors cannot be measured directly, they are minimized by reviewing all data for consistency and reasonableness.

Egg-type chicks hatched consist of all chicks of egg-type domesticated breeds including males and chicks destined for hatchery supply flocks and research purposes. The relationship of chicks hatched to chicken inventory and poultry marketings is carefully monitored. The disposition of egg-type chicks hatched prior to placement into the laying flock can vary significantly, which can make comparisons to changes in layer inventory inconsistent over time.

Intended placement data reported by leading breeders include pullet chicks expected from eggs sold the preceding month. The breeders in this report account for a large percentage of replacement pullets for hatchery supply flocks. Production of replacement pullets by these breeders indicates the number of pullets available to hatchery supply flocks several months before the pullets will actually move into the flocks. "Hatchery Supply Flocks" include all generations of layers which could lay eggs to supply a hatchery. This includes the generations of parents, grandparents, great-grandparents, pedigree, etc. Also included are research flocks, vaccine flocks, and specific pathogen-free flocks. The broiler cumulative potential placements are a moving total of the intended placements 7-15 months earlier. The egg-type cumulative potential placements of 7-18 months represent the first laying cycle. Molting and additional laying cycles will increase the cumulative potential placements of egg-type hatching flocks.

Information Contacts

Listed below are the commodity specialists in the Livestock Branch of the National Agricultural Statistics Service to contact for additional information.

Dan Kerestes, Chief, Livestock Branch	(202) 720-3570
Darin Jantzi, Head, Poultry and Specialty Commodities Section	(202) 720-3570
David Colwell - Cold Storage	(202) 720-8784
Fleming Gibson - Egg Products, Poultry Slaughter, Catfish Processing, Mink, Turkey Hatchery	(202) 690-3237
Darin Jantzi - Turkeys Raised, Catfish Production, Trout Production, Census of Aquaculture	(202) 720-3570
Sharyn Lavender - Layers, Eggs, Broiler Hatchery, Chicken Hatchery, Honey	(202) 720-3244

ACCESS TO REPORTS!!

For your convenience, there are several ways to obtain NASS reports, data products, and services:

INTERNET ACCESS

All NASS reports are available free of charge on the worldwide Internet. For access, connect to the Internet and go to the NASS Home Page at: www.nass.usda.gov.

E-MAIL SUBSCRIPTION

All NASS reports are available by subscription free of charge direct to your e-mail address. Starting with the NASS Home Page at www.nass.usda.gov, under the right navigation, *Receive reports by Email*, click on **National** or **State**. Follow the instructions on the screen.

PRINTED REPORTS OR DATA PRODUCTS

CALL OUR TOLL-FREE ORDER DESK: 800-999-6779 (U.S. and Canada)
Other areas, please call 703-605-6220 FAX: 703-605-6900
(Visa, MasterCard, check, or money order acceptable for payment.)

ASSISTANCE

For **assistance** with general agricultural statistics or further information about NASS or its products or services, contact the **Agricultural Statistics Hotline** at **800-727-9540**, 7:30 a.m. to 4:00 p.m. ET, or e-mail: nass@nass.usda.gov.

The U.S. Department of Agriculture (USDA) prohibits discrimination in all its programs and activities on the basis of race, color, national origin, age, disability, and where applicable, sex, marital status, familial status, parental status, religion, sexual orientation, genetic information, political beliefs, reprisal, or because all or part of an individual's income is derived from any public assistance program. (Not all prohibited bases apply to all programs.) Persons with disabilities who require alternative means for communication of program information (Braille, large print, audiotape, etc.) should contact USDA's TARGET Center at (202) 720-2600 (voice and TDD).

To file a complaint of discrimination, write to USDA, Director, Office of Civil Rights, 1400 Independence Avenue, S.W., Washington, D.C. 20250-9410, or call (800) 795-3272 (voice) or (202) 720-6382 (TDD). USDA is an equal opportunity provider and employer.