



NASS

FACT FINDERS FOR AGRICULTURE
UNITED STATES DEPARTMENT OF AGRICULTURE

Washington, D.C.

Chickens And Eggs

Released December 22, 2006, by the National Agricultural Statistics Service (NASS), Agricultural Statistics Board, U.S. Department of Agriculture. For information on *Chickens and Eggs* call Sharyn Lavender at (202) 720-3244, office hours 7:30 a.m. to 4:00 p.m. ET.

November Egg Production Up Slightly

U.S. egg production totaled 7.52 billion during November 2006, up slightly from last year. Production included 6.49 billion table eggs, and 1.03 billion hatching eggs, of which 969 million were broiler-type and 64 million were egg-type. The total number of layers during November 2006 averaged 346 million, down slightly from last year. November egg production per 100 layers was 2,176 eggs, up slightly from November 2005.

All layers in the U.S. on December 1, 2006 totaled 347 million, down slightly from last year. The 347 million layers consisted of 290 million layers producing table or market type eggs, 54.1 million layers producing broiler-type hatching eggs, and 2.82 million layers producing egg-type hatching eggs. Rate of lay per day on December 1, 2006, averaged 72.9 eggs per 100 layers, up 1 percent from December 1, 2005.

Egg-Type Chicks Hatched Down 2 Percent

Egg-type chicks hatched during November 2006 totaled 31.7 million, down 2 percent from November 2005. Eggs in incubators totaled 34.2 million on December 1, 2006, down slightly from a year ago.

Domestic placements of egg-type pullet chicks for future hatchery supply flocks by leading breeders totaled 206,000 during November 2006, up 14 percent from November 2005.

Broiler-Type Chicks Hatched Down 2 Percent

Broiler-type chicks hatched during November 2006 totaled 729 million, down 2 percent from November 2005. Eggs in incubators totaled 652 million on December 1, 2006, down 1 percent from a year earlier.

Leading breeders placed 7.45 million broiler-type pullet chicks for future domestic hatchery supply flocks during November 2006, up 2 percent from November 2005.

Contents

Page

U.S. Average Number of Layers on Hand and Egg Production	1
U.S. Layers on Hand and Eggs Produced by Type, Forced Molt, and Pullets	3
Layers on Hand and Eggs Produced by State	5
Egg Production by Type and State	7
Forced Molt	9
Egg-Type Hatchery	11
Egg-Type Intended Placements	13
Broiler-Type Hatchery	13
Broiler-Type Intended Placements	15
Procedures and Reliability	16
Information Contacts	16

**All Layers: Average Number on Hand During the Month,
United States, 2004-06**

Month	2004	2005	2006
	<i>1,000 Layers</i>	<i>1,000 Layers</i>	<i>1,000 Layers</i>
Dec ¹	339,305	345,618	348,545
Jan	337,948	347,864	349,246
Feb	338,905	348,791	349,764
Mar	340,699	346,959	350,088
Apr	341,550	343,574	348,154
May	341,562	341,819	344,718
Jun	342,513	339,856	342,175
Jul	343,180	338,573	340,743
Aug	343,653	339,351	341,007
Sep	344,452	340,914	342,611
Oct ²	345,075	342,823	343,894
Nov	344,633	345,874	345,696

¹ December preceding year.

² Revised 2006 only.

**Eggs: Production During the Month by Type,
United States, 2005-06 ¹**

Month	Total Eggs		Table Eggs		Hatching Eggs	
	2005	2006	2005	2006	2005	2006
	<i>Million Eggs</i>	<i>Million Eggs</i>	<i>Million Eggs</i>	<i>Million Eggs</i>	<i>Million Eggs</i>	<i>Million Eggs</i>
Dec ²	7,721	7,791	6,636	6,703	1,086	1,088
Jan	7,626	7,721	6,526	6,624	1,101	1,097
Feb	6,928	6,977	5,915	5,988	1,014	989
Mar	7,738	7,837	6,610	6,735	1,129	1,103
Apr	7,407	7,535	6,311	6,469	1,097	1,066
May	7,572	7,627	6,439	6,520	1,133	1,107
Jun	7,346	7,393	6,250	6,338	1,096	1,056
Jul	7,563	7,636	6,444	6,551	1,120	1,085
Aug	7,528	7,635	6,425	6,556	1,104	1,079
Sep	7,348	7,420	6,279	6,379	1,070	1,041
Oct ³	7,665	7,666	6,561	6,599	1,104	1,067
Nov	7,514	7,522	6,459	6,489	1,055	1,033
During Year	89,960	90,760	76,859	77,951	13,103	12,811

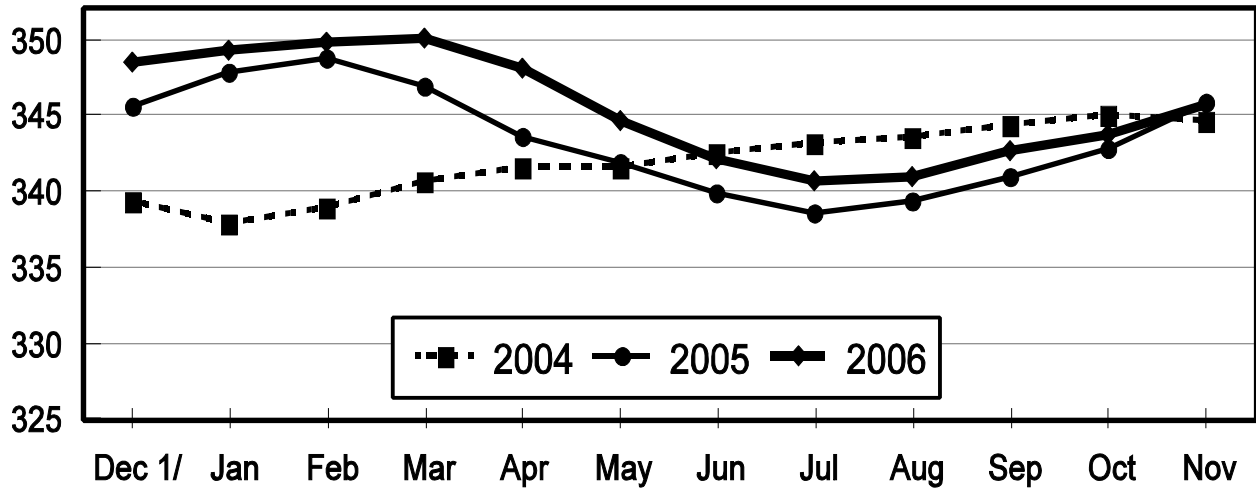
¹ Totals may not add due to rounding.

² December preceding year.

³ Revised 2006 only.

Average Number of Layers United States, 2004 - 2006 During the Month

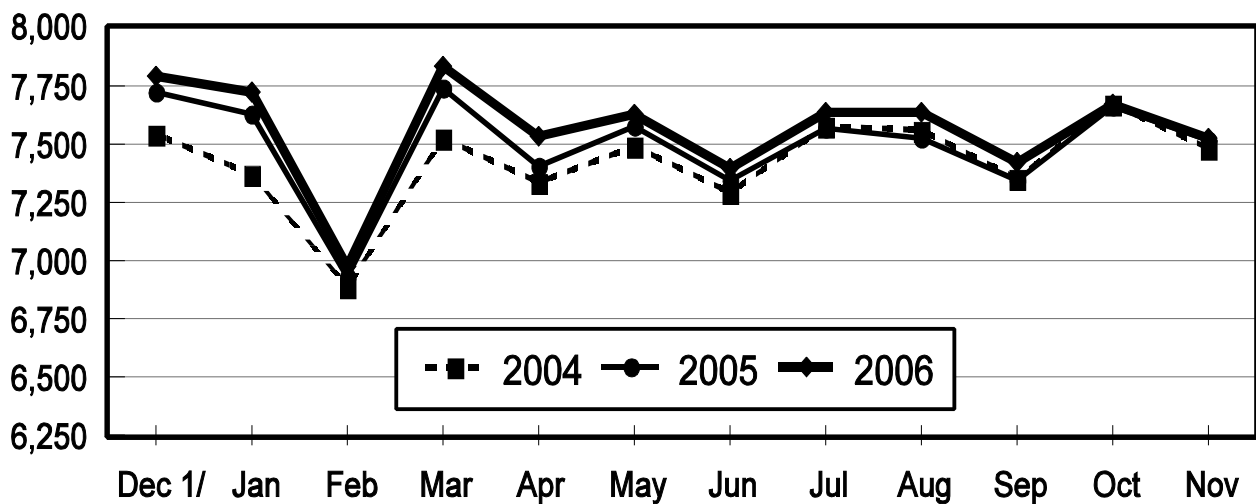
Million Layers



1/ Previous Year

All Egg Production United States, 2004 - 2006 During the Month

Million Eggs



1/ Previous Year

**Layers and Eggs: Layers on Hand and Eggs Produced by Type,
and Forced Molt, United States, October-November 2005-06 ¹**

Item	Unit	2005	2006 ²	2006 as % of 2005
Layers During Oct	1,000			
All Layers		342,823	343,894	100
Table Egg Type		285,212	287,940	101
Hatching Egg Type		57,611	55,954	97
Broiler-Type Hatching		55,104	53,205	97
Egg-Type Hatching		2,507	2,749	110
Eggs per 100 Layers During Oct	Number			
All Layers		2,236	2,229	100
Table Egg Type		2,300	2,292	100
Hatching Egg Type		1,916	1,907	100
Broiler-Type Hatching		1,893	1,880	99
Egg-Type Hatching		2,433	2,437	100
Eggs Produced During Oct	Million			
All Layers		7,665	7,666	100
Table Egg Type		6,561	6,599	101
Hatching Egg Type		1,104	1,067	97
Broiler-Type Hatching		1,043	1,000	96
Egg-Type Hatching		61	67	110
Layers on Nov 1	1,000			
All Layers		343,789	344,313	100
Table Egg Type		286,036	288,283	101
Hatching Egg Type		57,753	56,030	97
Broiler-Type Hatching		55,234	53,238	96
Egg-Type Hatching		2,519	2,792	111
Eggs per 100 Layers on Nov 1	Number			
All Layers		72.3	72.1	100
Table Egg Type		74.5	74.2	100
Hatching Egg Type		61.1	61.2	100
Broiler-Type Hatching		60.3	60.4	100
Egg-Type Hatching		78.9	76.7	97
Forced Molt Layers on Nov 1	Percent			
Percent Being Molted		3.1	3.0	97
Percent with Molt Completed		24.3	26.0	107
Layers Sold for Slaughter During Oct	1,000	13,369	11,767	88
Layers Rendered, Died, Destroyed, Composted or Disappeared For Any Reason During Oct	1,000	5,795	7,195	124
Pullets on Nov 1	1,000	98,194	98,004	100
Pullets Added During Oct ³	1,000	22,107	20,854	94

¹ Totals may not add due to rounding.

² Revised.

³ Pullet chicks less than 3 days old added to pullet flocks.

**Layers and Eggs: Layers on Hand and Eggs Produced by Type,
and Forced Molt, United States, November-December 2005-06 ¹**

Item	Unit	2005	2006	2006 as % of 2005
Layers During Nov	1,000			
All Layers		345,874	345,696	100
Table Egg Type		288,256	289,217	100
Hatching Egg Type		57,618	56,479	98
Broiler-Type Hatching		55,012	53,670	98
Egg-Type Hatching		2,606	2,809	108
Eggs per 100 Layers During Nov	Number			
All Layers		2,172	2,176	100
Table Egg Type		2,241	2,244	100
Hatching Egg Type		1,831	1,829	100
Broiler-Type Hatching		1,807	1,805	100
Egg-Type Hatching		2,341	2,278	97
Eggs Produced During Nov	Million			
All Layers		7,514	7,522	100
Table Egg Type		6,459	6,489	100
Hatching Egg Type		1,055	1,033	98
Broiler-Type Hatching		994	969	97
Egg-Type Hatching		61	64	105
Layers on Dec 1	1,000			
All Layers		347,917	347,029	100
Table Egg Type		290,457	290,128	100
Hatching Egg Type		57,460	56,901	99
Broiler-Type Hatching		54,776	54,084	99
Egg-Type Hatching		2,684	2,817	105
Eggs per 100 Layers on Dec 1	Number			
All Layers		72.4	72.9	101
Table Egg Type		74.7	75.3	101
Hatching Egg Type		60.6	60.6	100
Broiler-Type Hatching		59.8	59.9	100
Egg-Type Hatching		77.2	75.6	98
Forced Molt Layers on Dec 1	Percent			
Percent Being Molted		2.8	2.5	89
Percent with Molt Completed		23.7	26.2	111
Layers Sold for Slaughter During Nov	1,000	13,986	12,818	92
Layers Rendered, Died, Destroyed, Composted or Disappeared For Any Reason During Nov	1,000	6,849	6,265	91
Pullets on Dec 1	1,000	96,610	95,712	99
Pullets Added During Nov ²	1,000	23,636	21,255	90

¹ Totals may not add due to rounding.

² Pullet chicks less than 3 days old added to pullet flocks.

**Layers and Eggs: Layers on Hand and Eggs Produced by State
and United States, During October 2005-06**

State	Table Egg Layers in Flocks 30,000 and Above		All Layers ¹		Eggs per 100 for All Layers ¹	
	2005	2006 ²	2005	2006 ²	2005	2006 ²
	<i>1,000</i>	<i>1,000</i>	<i>1,000</i>	<i>1,000</i>	<i>Number</i>	<i>Number</i>
AL	1,727	1,748	9,120	8,779	1,897	1,936
AR	4,499	4,554	14,790	13,888	2,008	1,966
CA	18,676	18,593	19,201	19,060	2,219	2,225
CO	3,174	3,309	3,733	3,790	2,411	2,427
CT	2,946	2,665	3,001	2,725	2,333	2,422
FL	11,030	10,307	11,526	10,703	2,264	2,261
GA	9,911	9,609	18,957	18,792	2,168	2,113
HI	475	403	496	419	1,855	1,814
IL	4,402	4,809	4,626	5,053	2,399	2,395
IN	23,066	23,633	23,788	24,322	2,299	2,286
IA	48,694	51,001	49,351	51,765	2,286	2,249
ME	3,958	3,897	4,019	3,967	2,065	2,117
MD	2,459	2,608	2,578	2,750	2,366	2,255
MI	7,520	8,866	7,770	9,117	2,342	2,347
MN	10,732	10,657	11,243	11,118	2,313	2,204
MS	1,664	1,634	6,871	6,242	1,994	2,051
MO	5,626	6,260	6,849	7,348	2,292	2,286
NE	11,848	11,531	11,923	11,606	2,273	2,292
NY	3,781	4,013	4,105	4,264	2,412	2,275
NC	3,412	3,688	10,832	11,205	2,031	2,008
OH	27,517	27,058	28,036	27,566	2,265	2,231
OR	2,710	2,561	2,893	2,741	2,454	2,517
PA	22,026	21,626	23,778	23,497	2,317	2,388
SC	3,840	3,620	5,037	4,829	2,204	2,236
SD	3,218	3,110	3,318	3,210	2,140	2,243
TX	13,480	14,465	17,790	18,798	2,254	2,325
VA	1,493	1,331	3,444	3,205	2,149	2,153
WA	4,888	4,755	4,949	4,816	2,223	2,326
WI	4,352	4,181	4,847	4,699	2,311	2,192
Oth Sts ³	16,160	15,664	23,952	23,620	2,238	2,193
US	279,284	282,156	342,823	343,894	2,236	2,229

¹ Includes all layers and eggs produced in both table egg and hatching egg flocks regardless of size.

² Revised.

³ Not published separately to avoid disclosing data for individual operations.

**Layers and Eggs: Layers on Hand and Eggs Produced by State
and United States, During November 2005-06**

State	Table Egg Layers in Flocks 30,000 and Above		All Layers ¹		Eggs per 100 for All Layers ¹	
	2005	2006	2005	2006	2005	2006
	<i>1,000</i>	<i>1,000</i>	<i>1,000</i>	<i>1,000</i>	<i>Number</i>	<i>Number</i>
AL	1,725	1,739	9,126	8,872	1,841	1,871
AR	4,460	4,456	14,817	13,923	1,923	1,925
CA	19,052	18,916	19,495	19,422	2,180	2,162
CO	3,259	3,249	3,796	3,751	2,345	2,266
CT	2,970	2,836	3,021	2,896	2,317	2,417
FL	11,010	10,522	11,496	10,963	2,209	2,271
GA	9,824	9,711	18,838	18,836	2,113	2,086
HI	478	402	495	417	1,818	1,751
IL	4,224	4,893	4,446	5,131	2,362	2,300
IN	23,631	23,913	24,323	24,621	2,228	2,222
IA	48,793	51,119	49,501	51,878	2,204	2,209
ME	3,964	3,844	4,029	3,910	2,234	2,148
MD	2,604	2,492	2,758	2,660	2,248	2,218
MI	7,867	8,816	8,117	9,067	2,279	2,305
MN	10,690	10,708	11,193	11,179	2,260	2,192
MS	1,655	1,661	6,759	6,290	1,938	1,971
MO	5,746	6,222	6,935	7,306	2,149	2,190
NE	11,856	11,543	11,931	11,618	2,146	2,238
NY	3,837	3,892	4,113	4,144	2,358	2,292
NC	3,306	3,757	10,839	11,386	1,947	1,959
OH	28,006	26,842	28,544	27,351	2,169	2,132
OR	2,682	2,546	2,855	2,736	2,487	2,522
PA	22,330	21,766	24,096	23,677	2,249	2,302
SC	3,900	3,679	5,076	4,861	2,147	2,201
SD	3,209	3,101	3,309	3,201	2,206	2,124
TX	14,057	14,588	18,385	18,930	2,230	2,282
VA	1,603	1,355	3,531	3,229	2,124	2,075
WA	4,855	4,817	4,915	4,877	2,197	2,153
WI	4,317	4,420	4,826	4,954	2,279	2,241
Oth Sts ²	16,496	15,629	24,309	23,610	2,168	2,147
US	282,406	283,434	345,874	345,696	2,172	2,176

¹ Includes all layers and eggs produced in both table egg and hatching egg flocks regardless of size.

² Not published separately to avoid disclosing data for individual operations.

**Egg Production: By Type, State, and United States,
October 2005-06 ¹**

State	Total Production		Table Eggs ²		Hatching Eggs ²	
	2005	2006 ³	2005	2006 ³	2005	2006 ³
	<i>Million Eggs</i>	<i>Million Eggs</i>	<i>Million Eggs</i>	<i>Million Eggs</i>	<i>Million Eggs</i>	<i>Million Eggs</i>
AL	173	170	39	40	134	130
AR	297	273	106	104	191	169
CA	426	424				
CO	90	92				
CT	70	66				
FL	261	242	253	235	8	7
GA	411	397	234	219	177	178
HI	9.2	7.6	9.2	7.6	0	0
IL	111	121	108	117	3	4
IN	547	556	535	544	12	12
IA	1,128	1,164				
ME	83	84				
MD	61	62	59	60	2	2
MI	182	214				
MN	260	245	252	237	8	8
MS	137	128	40	39	97	89
MO	157	168				
NE	271	266	271	266	0	0
NY	99	97				
NC	220	225	85	88	135	137
OH	635	615				
OR	71	69	69	67	2	2
PA	551	561	535	541	16	20
SC	111	108	90	86	21	22
SD	71	72	71	72	0	0
TX	401	437				
VA	74	69	36	35	38	34
WA	110	112				
WI	112	103				
Oth Sts ⁴	536	518	408	392	128	126
US	7,665	7,666	6,561	6,599	1,104	1,067

¹ Totals may not add due to rounding.

² Data by type of flock not shown for some States to avoid disclosing individual operations, data included in US totals.

³ Revised.

⁴ Not published separately to avoid disclosing data for individual operations.

**Egg Production: By Type, State, and United States,
November 2005-06 ¹**

State	Total Production		Table Eggs ²		Hatching Eggs ²	
	2005	2006	2005	2006	2005	2006
	<i>Million Eggs</i>	<i>Million Eggs</i>	<i>Million Eggs</i>	<i>Million Eggs</i>	<i>Million Eggs</i>	<i>Million Eggs</i>
AL	168	166	39	40	129	126
AR	285	268	103	103	182	165
CA	425	420				
CO	89	85				
CT	70	70				
FL	254	249	246	242	8	7
GA	398	393	231	222	167	171
HI	9.0	7.3	9.0	7.3	0	0
IL	105	118	102	114	3	4
IN	542	547	530	535	12	12
IA	1,091	1,146				
ME	90	84				
MD	62	59	60	57	2	2
MI	185	209				
MN	253	245	245	237	8	8
MS	131	124	39	39	92	85
MO	149	160				
NE	256	260	256	260	0	0
NY	97	95				
NC	211	223	79	88	132	135
OH	619	583				
OR	71	69	69	67	2	2
PA	542	545	526	526	16	19
SC	109	107	89	86	20	21
SD	73	68	73	68	0	0
TX	410	432				
VA	75	67	40	34	35	33
WA	108	105				
WI	110	111				
Oth Sts ³	527	507	407	386	120	121
US	7,514	7,522	6,459	6,489	1,055	1,033

¹ Totals may not add due to rounding.

² Data by type of flock not shown for some States to avoid disclosing individual operations, data included in US totals.

³ Not published separately to avoid disclosing data for individual operations.

**Forced Molt: Percent of All Layers by Month,
United States, 2005-06 ¹**

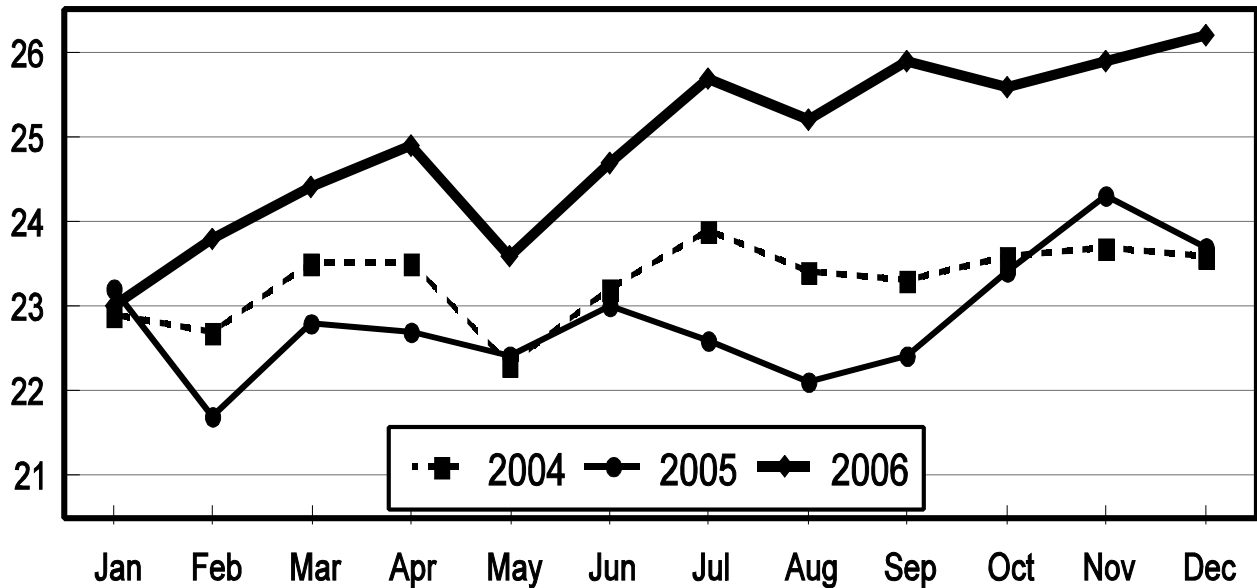
Month	Percent Being Molted		Percent with Molt Completed	
	2005	2006	2005	2006
	<i>Percent</i>	<i>Percent</i>	<i>Percent</i>	<i>Percent</i>
Jan	4.1	4.3	23.2	23.0
Feb	4.6	5.2	21.7	23.8
Mar	3.0	4.0	22.8	24.4
Apr	4.1	2.3	22.7	24.9
May	4.0	5.4	22.4	23.6
Jun	4.2	4.7	23.0	24.7
Jul	3.3	3.5	22.6	25.7
Aug	4.3	4.2	22.1	25.2
Sep	4.4	3.4	22.4	25.9
Oct	3.9	4.2	23.4	25.8
Nov ²	3.1	3.0	24.3	26.0
Dec	2.8	2.5	23.7	26.2

¹ As of first of month.

² Revised 2006 only.

All Layers: Percent Molt Completed United States, 2004 - 2006 First of the Month

Percent



**Forced Molt: Percent of All Layers by State
and United States, December 2005-06 ¹**

State	Percent Being Molted		Percent with Molt Completed	
	2005	2006	2005	2006
	<i>Percent</i>	<i>Percent</i>	<i>Percent</i>	<i>Percent</i>
AL	0.5	0.5	7.5	5.5
AR	1.0	0.0	11.5	14.5
CA	2.0	5.0	35.5	35.5
CO	1.5	0.0	21.5	21.5
CT	0.0	0.0	11.0	15.0
FL	7.0	0.5	34.0	40.0
GA	1.5	0.5	13.5	15.0
HI	6.0	5.0	53.0	65.0
IL	0.5	4.5	33.5	30.5
IN	4.0	3.5	28.0	32.5
IA	4.0	5.0	33.5	37.5
ME	0.0	0.0	0.0	0.0
MD	0.0	5.5	41.0	39.5
MI	0.5	4.0	25.0	26.5
MN	2.0	0.5	27.0	32.5
MS	1.0	0.0	9.5	14.0
MO	7.5	2.0	19.0	22.5
NE	8.0	6.0	28.0	23.0
NY	2.0	1.0	8.0	6.5
NC	0.0	0.0	7.5	10.5
OH	2.0	3.0	18.0	27.5
OR	4.0	0.0	35.0	35.0
PA	1.5	1.5	19.5	16.0
SC	14.0	7.0	15.0	33.5
SD	4.5	5.0	19.0	22.0
TX	2.5	0.5	23.0	26.0
VA	0.0	0.0	13.0	20.0
WA	5.0	4.5	41.0	44.0
WI	4.0	3.5	36.5	29.5
Oth Sts ²	1.5	0.7	26.6	25.8
US	2.8	2.5	23.7	26.2

¹ As of first of month.

² Not published separately to avoid disclosing data for individual operations.

**Hatchery Production: Eggs in Incubators, Chicks Hatched,
and Placements by Type, United States, November-December 2005-06**

Item	2005	2006	2006 as % of 2005
	<i>1,000</i>	<i>1,000</i>	<i>Percent</i>
Egg-Type			
Eggs in Incubators on Dec 1	34,247	34,240	100
Chicks Hatched During Nov	32,285	31,748	98
Chicks Hatched Jan thru Nov	401,260	393,618	98
Pullets Hatched During Nov for Intended Placements in Hatchery Supply Flocks 7-18 Months Earlier ¹	180 2,841	206 2,783	114 98
Broiler-Type			
Eggs in Incubators on Dec 1	660,019	652,019	99
Chicks Hatched During Nov	747,866	729,460	98
Chicks Hatched Jan thru Nov	8,675,594	8,622,466	99
Pullets Hatched During Nov for Intended Placements in Hatchery Supply Flocks 7-15 Months Earlier ²	7,298 63,006	7,448 63,993	102 102

¹ 2006 includes pullet chicks hatched May 2005 through Apr 2006.

² 2006 includes pullet chicks hatched Aug 2005 through Apr 2006.

**Egg-Type Eggs in Incubators: By Region and United States,
December 1, 2005-06**

Region	2005	2006	2006 as % of 2005
	<i>1,000</i>	<i>1,000</i>	<i>Percent</i>
North Atlantic	6,174	4,811	78
E North Central	7,907	7,251	92
W North Central	7,489	7,993	107
South Atlantic	3,810	4,385	115
South Central	5,657	5,506	97
West	3,210	4,294	134
US	34,247	34,240	100

Regions:

North Atlantic = CT, ME, MA, NH, NJ, NY, PA, RI, VT.

E North Central = IL, IN, MI, OH, WI.

W North Central = IA, KS, MN, MO, NE, ND, SD.

South Atlantic = DE, FL, GA, MD, NC, SC, VA, WV.

South Central = AL, AR, KY, LA, MS, OK, TN, TX.

West = AK, AZ, CA, CO, HI, ID, MT, NM, NV, OR, UT, WA, WY.

**Egg-Type Chicks Hatched: By State and United States,
November 2005-06**

State	During November			Jan-Nov		
	2005	2006	2006 as % of 2005	2005	2006	2006 as % of 2005
	<i>1,000</i>	<i>1,000</i>	<i>Percent</i>	<i>1,000</i>	<i>1,000</i>	<i>Percent</i>
GA	1,803	1,803	100	24,742	24,408	99
IN	4,551	4,621	102	55,606	53,391	96
IA	5,510	6,300	114	68,537	73,757	108
MN	1,126	1,084	96	11,895	10,835	91
PA	4,008	3,318	83	52,854	48,225	91
Oth Sts ¹	15,287	14,622	96	187,626	183,002	98
US	32,285	31,748	98	401,260	393,618	98

¹ Not published separately to avoid disclosing data for individual operations.

Egg-Type Chicks Hatched: By Month, United States, 2005-06

Month	By Months			Cumulative		
	2005	2006	2006 as % of 2005	2005	2006	2006 as % of 2005
	<i>1,000</i>	<i>1,000</i>	<i>Percent</i>	<i>1,000</i>	<i>1,000</i>	<i>Percent</i>
Jan	38,291	35,422	93	38,291	35,422	93
Feb	34,427	33,665	98	72,718	69,087	95
Mar	41,701	38,918	93	114,419	108,005	94
Apr	38,049	34,613	91	152,468	142,618	94
May	38,792	40,320	104	191,260	182,938	96
Jun	35,034	37,700	108	226,294	220,638	98
Jul	34,897	33,224	95	261,191	253,862	97
Aug	38,700	34,892	90	299,891	288,754	96
Sep	33,623	36,845	110	333,514	325,599	98
Oct	35,461	36,271	102	368,975	361,870	98
Nov	32,285	31,748	98	401,260	393,618	98
Dec	35,917			437,177		

**Intended Placements: Egg-Type Pullet Chicks for Hatchery Supply
Flocks by Month and Total, United States, 2005-06¹**

Month	Pullet Chicks Hatched		2006 as % of 2005	Cumulative Potential Plcmts Relative to Current Supply Flocks 7-18 Months Earlier ²	
	2005	2006		2006	2007
	<i>1,000</i>	<i>1,000</i>	<i>Percent</i>	<i>1,000</i>	<i>1,000</i>
Jan	157	188	120	2,837	2,842
Feb	208	196	94	2,845	2,920
Mar	314	286	91	2,788	2,912
Apr	308	255	83	2,958	2,785
May	190	241	127	2,878	2,820
Jun	175	183	105	2,833	2,846
Jul	242	320	132	2,845	
Aug	261	253	97	2,876	
Sep	375	248	66	2,864	
Oct	188	223	119	2,836	
Nov	180	206	114	2,783	
Dec	247			2,834	
Total	2,845				

¹ Reported by leading breeders. Coverage may not be 100 percent. Includes expected pullet chicks from eggs sold during the preceding month at the rate of 125 pullet chicks per 30 dozen case of eggs.

² For November 2006, includes breeder pullet chicks hatched May 2005 through Apr 2006. The 7-18 months represent the first laying cycle. Molting and additional laying cycles will increase the cumulative potential placements.

**Broiler-Type Eggs in Incubators: By Region
and United States, December 1, 2005-06**

Region	2005	2006	2006 as % of 2005
	<i>1,000</i>	<i>1,000</i>	<i>Percent</i>
North Atlantic	12,337	12,160	99
E North Central	8,870	9,459	107
W North Central	23,188	22,193	96
South Atlantic	239,811	243,708	102
South Central	350,503	338,261	97
West	25,310	26,238	104
US	660,019	652,019	99

**Broiler-Type Chicks Hatched: By State
and United States, November 2005-06**

State	During November			Jan-Nov		
	2005	2006	2006 as % of 2005	2005	2006	2006 as % of 2005
	<i>1,000</i>	<i>1,000</i>	<i>Percent</i>	<i>1,000</i>	<i>1,000</i>	<i>Percent</i>
AL	107,611	103,372	96	1,226,959	1,239,292	101
AR	102,476	98,861	96	1,219,200	1,189,077	98
DE	13,384	13,146	98	158,553	153,083	97
FL	4,930	4,883	99	54,000	54,098	100
GA	111,709	115,631	104	1,313,911	1,353,785	103
KY	23,329	23,870	102	277,938	281,093	101
LA	14,162	13,605	96	161,453	158,457	98
MD	30,906	30,085	97	346,722	343,753	99
MS	63,516	58,384	92	759,009	717,763	95
NC	63,993	64,781	101	723,166	734,086	102
OK	22,898	22,350	98	258,711	250,780	97
PA	13,602	12,986	95	157,591	154,043	98
SC	17,027	18,033	106	199,374	206,342	103
TX	51,441	48,215	94	599,696	593,095	99
VA	22,704	20,748	91	256,228	252,391	99
CA, MO, TN, & WV	62,653	59,052	94	718,586	700,069	97
19 Sts ¹	726,341	7,080,027	97	8,431,097	8,381,207	99
Oth Sts ²	21,525	21,458	100	244,497	241,259	99
US	747,866	729,460	98	8,675,594	8,622,466	99

¹ States in the weekly hatchery production estimating program.

² Not published separately to avoid disclosing data for individual operations.

Broiler-Type Chicks Hatched: By Month, United States, 2005-06

Month	By Months			Cumulative		
	2005	2006	2006 as % of 2005	2005	2006	2006 as % of 2005
	<i>1,000</i>	<i>1,000</i>	<i>Percent</i>	<i>1,000</i>	<i>1,000</i>	<i>Percent</i>
Jan	797,576	804,073	101	797,576	804,073	101
Feb	732,038	733,145	100	1,529,614	1,537,218	100
Mar	816,552	817,068	100	2,346,166	2,354,286	100
Apr	792,173	787,064	99	3,138,339	3,141,350	100
May	823,993	810,908	98	3,962,332	3,952,258	100
Jun	796,945	787,791	99	4,759,277	4,740,049	100
Jul	808,382	800,132	99	5,567,659	5,540,181	100
Aug	812,474	809,284	100	6,380,133	6,349,465	100
Sep	771,146	771,719	100	7,151,279	7,121,184	100
Oct	776,449	771,822	99	7,927,728	7,893,006	100
Nov	747,866	729,460	98	8,675,594	8,622,466	99
Dec	808,525			9,484,119		

**Intended Placements: Broiler-Type Pullet Chicks for Hatchery
Supply Flocks by Month and Total, 2005-06 ¹**

Month	Pullet Chicks Hatched		2006 as % of 2005	Cumulative Potential Plcmts Relative to Current Supply Flocks 7-15 Months Earlier ²	
	2005	2006		2006	2007
	<i>1,000</i>	<i>1,000</i>	<i>Percent</i>	<i>1,000</i>	<i>1,000</i>
US Place- ments					
Jan	6,409	6,825	106	62,860	64,544
Feb	7,325	7,593	104	63,060	64,056
Mar	7,077	7,012	99	63,416	64,389
Apr	6,800	6,593	97	63,776	64,340
May	7,783	7,531	97	64,311	64,259
Jun	7,109	7,636	107	64,284	64,114
Jul	6,657	6,456	97	64,319	
Aug	7,484	7,631	102	64,344	
Sep	7,132	7,063	99	64,154	
Oct	6,944	6,744	97	64,057	
Nov	7,298	7,448	102	63,993	
Dec	7,112			64,040	
Annual Total	85,130				
Total Place- ments ³					
Jan	7,804	8,018	103		
Feb	8,664	9,026	104		
Mar	8,709	8,415	97		
Apr	7,995	7,558	95		
May	8,995	8,930	99		
Jun	8,571	9,144	107		
Jul	7,846	7,845	100		
Aug	9,084	9,170	101		
Sep	8,683	8,742	101		
Oct	8,279	8,028	97		
Nov	8,830	9,130	103		
Dec	8,256				
Annual Total	101,716				

¹ Reported by leading breeders. Coverage may not be 100 percent. Includes expected pullet chicks from eggs sold during the preceding month at the rate of 125 pullet chicks per 30 dozen case of eggs.

² For Nov 2006, includes breeder pullet chicks hatched Aug 2005 through Apr 2006.

³ U.S. production of intended placements worldwide.

Reliability of Chicken and Eggs Estimates

Survey Procedures: Primary data for the "**Chickens and Eggs**" report are from weekly and/or monthly questionnaires sent to producers. An attempt is made to collect information for layer and egg estimates from each known contractor and independent producer who has at least 30,000 table egg layers, flocks of hatchery supply layers, or pullet only operations with at least 500 pullets. Coverage for operations with less than 30,000 table egg layers are estimated each month based on data reported in December. Approximately 650 contractors, independent egg producers, and pullet only operations are contacted each month. All known hatcheries, approximately 330, are contacted for information on a weekly and/or monthly basis.

Revision Policy: The previous month's estimates are subject to revision if late reports or corrected data indicates a different level. Additionally, revisions after the monthly report will be made at the end of the marketing year and published in the annual reports of "**Chickens and Eggs Summary**" and "**Hatchery Production**".

Reliability: Operations are mailed a questionnaire and given adequate time to respond by mail. Those that do not respond are phoned. Great care is exercised to ensure that all operations are accounted for during each survey period. However, there are usually missing reports that must be accounted for in the estimates.

Sound statistical methodology is employed to derive estimates from the reported data. All data are checked for unusual values. All operations' data are compared to their own past operating profiles and also to trends from other operations. Data for missing operations are estimated based on similar operations or historical data. Survey data are subject to non-sampling errors such as omissions and mistakes in reporting and in processing. While these errors cannot be measured directly, they are minimized by reviewing all data for consistency and reasonableness.

Egg-type chicks hatched consist of all chicks of egg-type domesticated breeds including males and chicks destined for hatchery supply flocks and research purposes. The relationship of chicks hatched to chicken inventory and poultry marketings is carefully monitored. The disposition of egg-type chicks hatched prior to placement into the laying flock can vary significantly, which can make comparisons to changes in layer inventory inconsistent over time.

Intended placement data reported by leading breeders include pullet chicks expected from eggs sold the preceding month. The breeders in this report account for a large percentage of replacement pullets for hatchery supply flocks. Production of replacement pullets by these breeders indicates the number of pullets available to hatchery supply flocks several months before the pullets will actually move into the flocks. "Hatchery Supply Flocks" include all generations of layers which could lay eggs to supply a hatchery. This includes the generations of parents, grandparents, great-grandparents, pedigree, etc. Also included are research flocks, vaccine flocks, and specific pathogen-free flocks. The broiler cumulative potential placements are a moving total of the intended placements 7-15 months earlier. The egg-type cumulative potential placements of 7-18 months represent the first laying cycle. Molting and additional laying cycles will increase the cumulative potential placements of egg-type hatching flocks.

Information Contacts

Listed below are the commodity specialists in the Livestock Branch of the National Agricultural Statistics Service to contact for additional information.

Dan Kerestes, Chief, Livestock Branch	(202) 720-3570
Darin Jantzi, Head, Poultry and Specialty Commodities Section	(202) 720-3570
David Colwell - Cold Storage	(202) 720-8784
Fleming Gibson - Egg Products, Poultry Slaughter, Catfish Processing, Mink, Turkey Hatchery	(202) 690-3237
Darin Jantzi - Turkeys Raised, Catfish Production, Trout Production, Census of Aquaculture	(202) 720-3570
Sharyn Lavender - Layers, Eggs, Broiler Hatchery, Chicken Hatchery, Honey	(202) 720-3244

ACCESS TO REPORTS!!

For your convenience, there are several ways to obtain NASS reports, data products, and services:

INTERNET ACCESS

All NASS reports are available free of charge on the worldwide Internet. For access, connect to the Internet and go to the NASS Home Page at: www.nass.usda.gov.

E-MAIL SUBSCRIPTION

All NASS reports are available by subscription free of charge direct to your e-mail address. Starting with the NASS Home Page at www.nass.usda.gov, under the right navigation, *Receive reports by Email*, click on **National** or **State**. Follow the instructions on the screen.

PRINTED REPORTS OR DATA PRODUCTS

CALL OUR TOLL-FREE ORDER DESK: 800-999-6779 (U.S. and Canada)
Other areas, please call 703-605-6220 FAX: 703-605-6900
(Visa, MasterCard, check, or money order acceptable for payment.)

ASSISTANCE

For **assistance** with general agricultural statistics or further information about NASS or its products or services, contact the **Agricultural Statistics Hotline** at **800-727-9540**, 7:30 a.m. to 4:00 p.m. ET, or e-mail: nass@nass.usda.gov.

The U.S. Department of Agriculture (USDA) prohibits discrimination in all its programs and activities on the basis of race, color, national origin, age, disability, and where applicable, sex, marital status, familial status, parental status, religion, sexual orientation, genetic information, political beliefs, reprisal, or because all or a part of an individual's income is derived from any public assistance program. (Not all prohibited bases apply to all programs.) Persons with disabilities who require alternative means for communication of program information (Braille, large print, audiotape, etc.) should contact USDA's TARGET Center at (202) 720-2600 (voice and TDD).

To file a complaint of discrimination, write to USDA, Director, Office of Civil Rights, 1400 Independence Avenue, S.W., Washington, D.C. 20250-9410, or call (800) 795-3272 (voice) or (202) 720-6382 (TDD). USDA is an equal opportunity provider and employer.