



# NASS

FACT FINDERS FOR AGRICULTURE  
UNITED STATES DEPARTMENT OF AGRICULTURE

Washington, D.C.

# Chickens And Eggs

---

Released January 22, 2007, by the National Agricultural Statistics Service (NASS), Agricultural Statistics Board, U.S. Department of Agriculture. For information on *Chickens and Eggs* call Mark Aitken at (202) 690-8632, for "Chicks Hatched" call Sharyn Lavender at (202) 720-3244, office hours 7:30 a.m. to 4:00 p.m. ET.

## December Egg Production Down Slightly

U.S. egg production totaled 7.78 billion during December 2006, down slightly from last year. Production included 6.68 billion table eggs, and 1.09 billion hatching eggs, of which 1.03 billion were broiler-type and 66 million were egg-type. The total number of layers during December 2006 averaged 348 million, down slightly from last year. December egg production per 100 layers was 2,234 eggs, down slightly from December 2005.

All layers in the U.S. on January 1, 2007 totaled 348 million, down slightly from last year. The 348 million layers consisted of 290 million layers producing table or market type eggs, 55.1 million layers producing broiler-type hatching eggs, and 2.86 million layers producing egg-type hatching eggs. Rate of lay per day on January 1, 2007, averaged 71.1 eggs per 100 layers, down 1 percent from January 1, 2006.

## Egg-Type Chicks Hatched Down 7 Percent

Egg-type chicks hatched during December 2006 totaled 33.4 million, down 7 percent from December 2005. Eggs in incubators totaled 34.4 million on January 1, 2007, down 3 percent from a year ago.

Domestic placements of egg-type pullet chicks for future hatchery supply flocks by leading breeders totaled 205,000 during December 2006, down 17 percent from December 2005.

## Broiler-Type Chicks Hatched Down 2 Percent

Broiler-type chicks hatched during December 2006 totaled 795 million, down 2 percent from December 2005. Eggs in incubators totaled 652 million on January 1, 2007, down 1 percent from a year earlier.

Leading breeders placed 7.20 million broiler-type pullet chicks for future domestic hatchery supply flocks during December 2006, up 1 percent from December 2005.



## Contents

## Page

U.S. Average Number of Layers on Hand and Egg Production .....	1
U.S. Layers on Hand and Eggs Produced by Type, Forced Molt, and Pullets .....	3
Layers on Hand and Eggs Produced by State .....	5
Egg Production by Type and State .....	7
Forced Molt .....	9
Egg-Type Hatchery .....	11
Egg-Type Intended Placements .....	13
Broiler-Type Hatchery .....	13
Broiler-Type Intended Placements .....	15
Procedures and Reliability .....	16
Information Contacts .....	16

**All Layers: Average Number on Hand During the Month,  
United States, 2005-07**

Month	2005	2006	2007
	<i>1,000 Layers</i>	<i>1,000 Layers</i>	<i>1,000 Layers</i>
Dec <sup>1</sup>	345,618	348,545	348,108
Jan	347,864	349,246	
Feb	348,791	349,764	
Mar	346,959	350,088	
Apr	343,574	348,154	
May	341,819	344,718	
Jun	339,856	342,175	
Jul	338,573	340,743	
Aug	339,351	341,007	
Sep	340,914	342,611	
Oct	342,823	343,894	
Nov <sup>2</sup>	345,874	346,315	

<sup>1</sup> December preceding year.

<sup>2</sup> Revised 2006 only.

**Eggs: Production During the Month by Type,  
United States, 2006-07 <sup>1</sup>**

Month	Total Eggs		Table Eggs		Hatching Eggs	
	2006	2007	2006	2007	2006	2007
	<i>Million Eggs</i>	<i>Million Eggs</i>	<i>Million Eggs</i>	<i>Million Eggs</i>	<i>Million Eggs</i>	<i>Million Eggs</i>
Dec <sup>2</sup>	7,791	7,777	6,703	6,683	1,088	1,094
Jan	7,721		6,624		1,097	
Feb	6,977		5,988		989	
Mar	7,837		6,735		1,103	
Apr	7,535		6,469		1,066	
May	7,627		6,520		1,107	
Jun	7,393		6,338		1,056	
Jul	7,636		6,551		1,085	
Aug	7,635		6,556		1,079	
Sep	7,420		6,379		1,041	
Oct	7,666		6,599		1,067	
Nov <sup>3</sup>	7,534		6,496		1,038	
During Year	90,772		77,958		12,816	

<sup>1</sup> Totals may not add due to rounding.

<sup>2</sup> December preceding year.

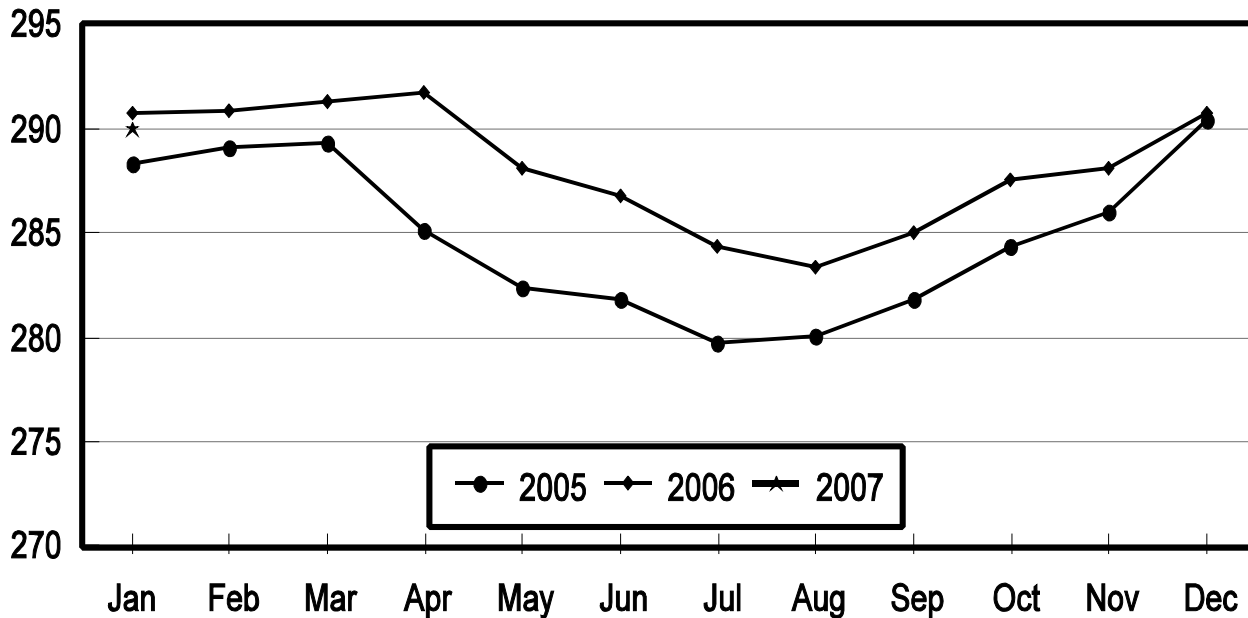
<sup>3</sup> Revised 2006 only.

# Table Egg Layers

## United States, 2005 - 2007

First of the Month

Million Layers

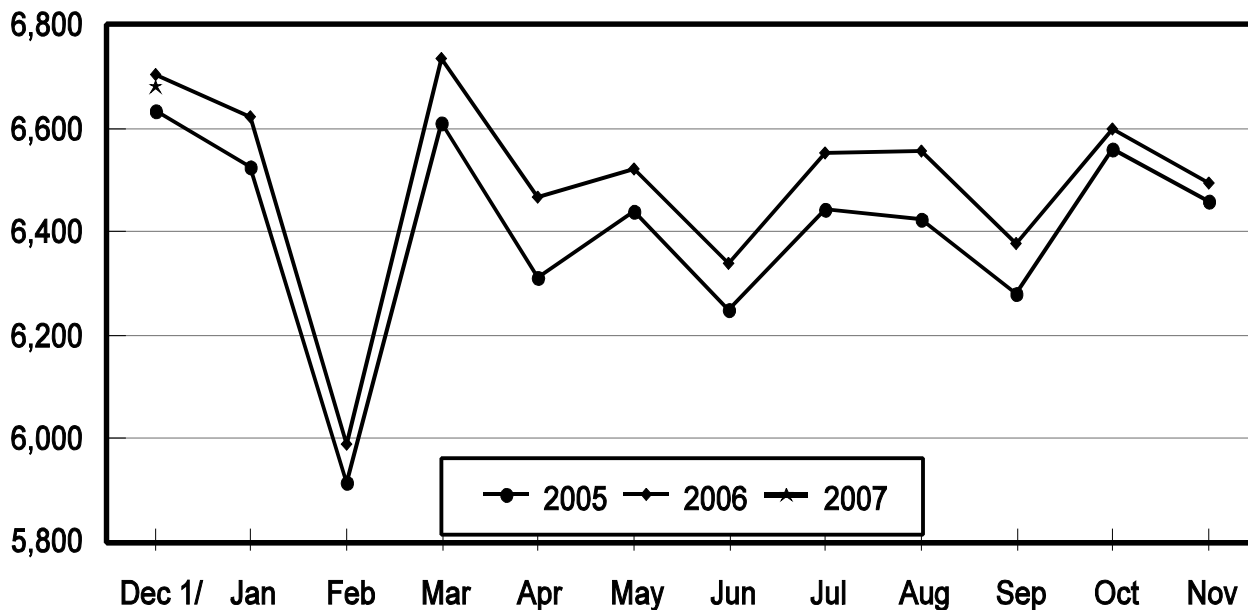


# Table Egg Production

## United States, 2005 - 2007

During the Month

Million Eggs



1/ Previous Year

**Layers and Eggs: Layers on Hand and Eggs Produced by Type,  
and Forced Molt, United States, November-December 2005-06 <sup>1</sup>**

Item	Unit	2005	2006 <sup>2</sup>	2006 as % of 2005
Layers During Nov	1,000			
All Layers		345,874	346,315	100
Table Egg Type		288,256	289,556	100
Hatching Egg Type		57,618	56,759	99
Broiler-Type Hatching		55,012	53,949	98
Egg-Type Hatching		2,606	2,810	108
Eggs per 100 Layers During Nov	Number			
All Layers		2,172	2,175	100
Table Egg Type		2,241	2,243	100
Hatching Egg Type		1,831	1,829	100
Broiler-Type Hatching		1,807	1,805	100
Egg-Type Hatching		2,341	2,278	97
Eggs Produced During Nov	Million			
All Layers		7,514	7,534	100
Table Egg Type		6,459	6,496	101
Hatching Egg Type		1,055	1,038	98
Broiler-Type Hatching		994	974	98
Egg-Type Hatching		61	64	105
Layers on Dec 1	1,000			
All Layers		347,917	348,268	100
Table Egg Type		290,457	290,807	100
Hatching Egg Type		57,460	57,461	100
Broiler-Type Hatching		54,776	54,642	100
Egg-Type Hatching		2,684	2,819	105
Eggs per 100 Layers on Dec 1	Number			
All Layers		72.4	72.9	101
Table Egg Type		74.7	75.3	101
Hatching Egg Type		60.6	60.6	100
Broiler-Type Hatching		59.8	59.9	100
Egg-Type Hatching		77.2	75.5	98
Forced Molt Layers on Dec 1	Percent			
Percent Being Molted		2.8	2.2	79
Percent with Molt Completed		23.7	26.6	112
Layers Sold for Slaughter During Nov	1,000	13,986	12,043	86
Layers Rendered, Died, Destroyed, Composted or Disappeared For Any Reason During Nov	1,000	6,849	6,202	91
Pullets on Dec 1	1,000	96,610	95,849	99
Pullets Added During Nov <sup>3</sup>	1,000	23,636	21,337	90

<sup>1</sup> Totals may not add due to rounding.

<sup>2</sup> Revised.

<sup>3</sup> Pullet chicks less than 3 days old added to pullet flocks.

**Layers and Eggs: Layers on Hand and Eggs Produced by Type,  
and Forced Molt, United States, December-January 2005-07 <sup>1</sup>**

Item	Unit	2005	2006	2006 as % of 2005
Layers During Dec	1,000			
All Layers		348,545	348,108	100
Table Egg Type		290,620	290,383	100
Hatching Egg Type		57,925	57,725	100
Broiler-Type Hatching		55,210	54,879	99
Egg-Type Hatching		2,715	2,846	105
Eggs per 100 Layers During Dec	Number			
All Layers		2,235	2,234	100
Table Egg Type		2,306	2,301	100
Hatching Egg Type		1,878	1,895	101
Broiler-Type Hatching		1,853	1,873	101
Egg-Type Hatching		2,394	2,319	97
Eggs Produced During Dec	Million			
All Layers		7,791	7,777	100
Table Egg Type		6,703	6,683	100
Hatching Egg Type		1,088	1,094	101
Broiler-Type Hatching		1,023	1,028	100
Egg-Type Hatching		65	66	102
		2006	2007	2007 as % of 2006
Layers on Jan 1	1,000			
All Layers		349,142	347,899	100
Table Egg Type		290,767	289,937	100
Hatching Egg Type		58,375	57,962	99
Broiler-Type Hatching		55,635	55,098	99
Egg-Type Hatching		2,740	2,864	105
Eggs per 100 Layers on Jan 1	Number			
All Layers		71.7	71.1	99
Table Egg Type		73.9	73.1	99
Hatching Egg Type		60.7	61.2	101
Broiler-Type Hatching		60.0	60.4	101
Egg-Type Hatching		76.4	75.0	98
Forced Molt Layers on Jan 1	Percent			
Percent Being Molted		4.3	4.4	102
Percent with Molt Completed		23.0	24.4	106
Layers Sold for Slaughter During Dec	1,000	14,165	12,835	91
Layers Rendered, Died, Destroyed, Composted or Disappeared For Any Reason During Dec	1,000	5,453	6,848	126
Pullets on Jan 1	1,000	97,952	94,890	97
Pullets Added During Dec <sup>2</sup>	1,000	23,933	20,960	88

<sup>1</sup> Totals may not add due to rounding.

<sup>2</sup> Pullet chicks less than 3 days old added to pullet flocks.

**Layers and Eggs: Layers on Hand and Eggs Produced by State  
and United States, During November 2005-06**

State	Table Egg Layers in Flocks 30,000 and Above		All Layers <sup>1</sup>		Eggs per 100 for All Layers <sup>1</sup>	
	2005	2006 <sup>2</sup>	2005	2006 <sup>2</sup>	2005	2006 <sup>2</sup>
	<i>1,000</i>	<i>1,000</i>	<i>1,000</i>	<i>1,000</i>	<i>Number</i>	<i>Number</i>
AL	1,725	1,739	9,126	8,872	1,841	1,871
AR	4,460	4,456	14,817	13,923	1,923	1,925
CA	19,052	18,916	19,495	19,422	2,180	2,162
CO	3,259	3,249	3,796	3,746	2,345	2,269
CT	2,970	2,836	3,021	2,896	2,317	2,417
FL	11,010	10,522	11,496	10,963	2,209	2,271
GA	9,824	9,711	18,838	19,115	2,113	2,082
HI	478	402	495	417	1,818	1,751
IL	4,224	4,893	4,446	5,131	2,362	2,300
IN	23,631	23,913	24,323	24,621	2,228	2,222
IA	48,793	51,119	49,501	51,878	2,204	2,209
ME	3,964	3,844	4,029	3,910	2,234	2,148
MD	2,604	2,492	2,758	2,661	2,248	2,217
MI	7,867	8,895	8,117	9,146	2,279	2,307
MN	10,690	10,708	11,193	11,179	2,260	2,192
MS	1,655	1,661	6,759	6,290	1,938	1,971
MO	5,746	6,222	6,935	7,306	2,149	2,190
NE	11,856	11,543	11,931	11,618	2,146	2,238
NY	3,837	3,892	4,113	4,144	2,358	2,292
NC	3,306	3,804	10,839	11,422	1,947	1,961
OH	28,006	26,842	28,544	27,351	2,169	2,132
OR	2,682	2,546	2,855	2,736	2,487	2,522
PA	22,330	21,766	24,096	23,677	2,249	2,302
SC	3,900	3,679	5,076	4,861	2,147	2,201
SD	3,209	3,101	3,309	3,201	2,206	2,124
TX	14,057	14,588	18,385	18,930	2,230	2,272
VA	1,603	1,355	3,531	3,229	2,124	2,075
WA	4,855	4,998	4,915	5,058	2,197	2,155
WI	4,317	4,420	4,826	4,954	2,279	2,241
Oth Sts <sup>3</sup>	16,496	15,677	24,309	23,658	2,168	2,151
US	282,406	283,789	345,874	346,315	2,172	2,175

<sup>1</sup> Includes all layers and eggs produced in both table egg and hatching egg flocks regardless of size.

<sup>2</sup> Revised.

<sup>3</sup> Not published separately to avoid disclosing data for individual operations.



**Layers and Eggs: Layers on Hand and Eggs Produced by State  
and United States, During December 2005-06**

State	Table Egg Layers in Flocks 30,000 and Above		All Layers <sup>1</sup>		Eggs per 100 for All Layers <sup>1</sup>	
	2005	2006	2005	2006	2005	2006
	<i>1,000</i>	<i>1,000</i>	<i>1,000</i>	<i>1,000</i>	<i>Number</i>	<i>Number</i>
AL	1,685	1,711	9,013	8,823	1,908	1,961
AR	4,280	4,374	14,559	14,069	1,985	1,962
CA	19,165	19,142	19,576	19,650	2,243	2,198
CO	3,349	3,196	3,889	3,721	2,417	2,338
CT	2,964	3,185	3,016	3,238	2,354	2,409
FL	11,012	10,773	11,481	11,262	2,291	2,273
GA	9,934	10,039	19,081	19,791	2,128	2,117
HI	465	396	479	409	1,837	1,809
IL	4,258	4,913	4,486	5,146	2,251	2,312
IN	23,836	23,933	24,523	24,676	2,308	2,278
IA	49,593	51,248	50,350	52,022	2,230	2,220
ME	3,914	3,877	3,990	3,939	2,381	2,158
MD	2,704	2,428	2,870	2,602	2,265	2,306
MI	8,010	8,965	8,260	9,215	2,349	2,355
MN	10,605	10,659	11,090	11,135	2,317	2,290
MS	1,671	1,619	6,704	6,401	1,984	2,047
MO	5,874	6,170	7,024	7,271	2,093	2,256
NE	11,853	11,460	11,928	11,535	2,222	2,315
NY	3,937	3,819	4,167	4,073	2,472	2,504
NC	3,333	3,862	10,970	11,516	2,015	2,093
OH	28,678	27,017	29,217	27,544	2,303	2,305
OR	2,598	2,410	2,771	2,583	2,454	2,555
PA	22,578	21,674	24,444	23,598	2,320	2,377
SC	3,856	3,726	4,999	4,875	2,260	2,236
SD	3,200	3,096	3,300	3,196	2,333	2,159
TX	14,271	14,645	18,669	18,996	2,314	2,279
VA	1,593	1,298	3,530	3,184	2,153	2,104
WA	4,867	4,910	4,932	4,973	2,271	2,272
WI	4,215	4,433	4,732	4,978	2,346	2,370
Oth Sts <sup>2</sup>	16,545	15,675	24,495	23,687	2,241	2,195
US	284,843	284,653	348,545	348,108	2,235	2,234

<sup>1</sup> Includes all layers and eggs produced in both table egg and hatching egg flocks regardless of size.

<sup>2</sup> Not published separately to avoid disclosing data for individual operations.

**Egg Production: By Type, State, and United States,  
November 2005-06<sup>1</sup>**

State	Total Production		Table Eggs <sup>2</sup>		Hatching Eggs <sup>2</sup>	
	2005	2006 <sup>3</sup>	2005	2006 <sup>3</sup>	2005	2006 <sup>3</sup>
	<i>Million Eggs</i>	<i>Million Eggs</i>	<i>Million Eggs</i>	<i>Million Eggs</i>	<i>Million Eggs</i>	<i>Million Eggs</i>
AL	168	166	39	40	129	126
AR	285	268	103	103	182	165
CA	425	420				
CO	89	85				
CT	70	70				
FL	254	249	246	242	8	7
GA	398	398	231	222	167	176
HI	9.0	7.3	9.0	7.3	0	0
IL	105	118	102	114	3	4
IN	542	547	530	535	12	12
IA	1,091	1,146				
ME	90	84				
MD	62	59	60	57	2	2
MI	185	211				
MN	253	245	245	237	8	8
MS	131	124	39	39	92	85
MO	149	160				
NE	256	260	256	260	0	0
NY	97	95				
NC	211	224	79	89	132	135
OH	619	583				
OR	71	69	69	67	2	2
PA	542	545	526	526	16	19
SC	109	107	89	86	20	21
SD	73	68	73	68	0	0
TX	410	430				
VA	75	67	40	34	35	33
WA	108	109				
WI	110	111				
Oth Sts <sup>4</sup>	527	509	407	388	120	121
US	7,514	7,534	6,459	6,496	1,055	1,038

<sup>1</sup> Totals may not add due to rounding.

<sup>2</sup> Data by type of flock not shown for some States to avoid disclosing individual operations, data included in US totals.

<sup>3</sup> Revised.

<sup>4</sup> Not published separately to avoid disclosing data for individual operations.

**Egg Production: By Type, State, and United States,  
December 2005-06 <sup>1</sup>**

State	Total Production		Table Eggs <sup>2</sup>		Hatching Eggs <sup>2</sup>	
	2005	2006	2005	2006	2005	2006
	<i>Million Eggs</i>	<i>Million Eggs</i>	<i>Million Eggs</i>	<i>Million Eggs</i>	<i>Million Eggs</i>	<i>Million Eggs</i>
AL	172	173	40	40	132	133
AR	289	276	102	103	187	173
CA	439	432				
CO	94	87				
CT	71	78				
FL	263	256	254	247	9	9
GA	406	419	232	232	174	187
HI	8.8	7.4	8.8	7.4	0	0
IL	101	119	97	115	4	4
IN	566	562	554	549	12	13
IA	1,123	1,155				
ME	95	85				
MD	65	60	63	58	2	2
MI	194	217				
MN	257	255	248	247	9	8
MS	133	131	40	40	93	91
MO	147	164				
NE	265	267	265	267	0	0
NY	103	102				
NC	221	241	83	99	138	142
OH	673	635				
OR	68	66	66	64	2	2
PA	567	561	549	541	18	20
SC	113	109	93	88	20	21
SD	77	69	77	69	0	0
TX	432	433				
VA	76	67	40	32	36	35
WA	112	113				
WI	111	118				
Oth Sts <sup>3</sup>	549	520	426	395	123	125
US	7,791	7,777	6,703	6,683	1,088	1,094

<sup>1</sup> Totals may not add due to rounding.

<sup>2</sup> Data by type of flock not shown for some States to avoid disclosing individual operations, data included in US totals.

<sup>3</sup> Not published separately to avoid disclosing data for individual operations.

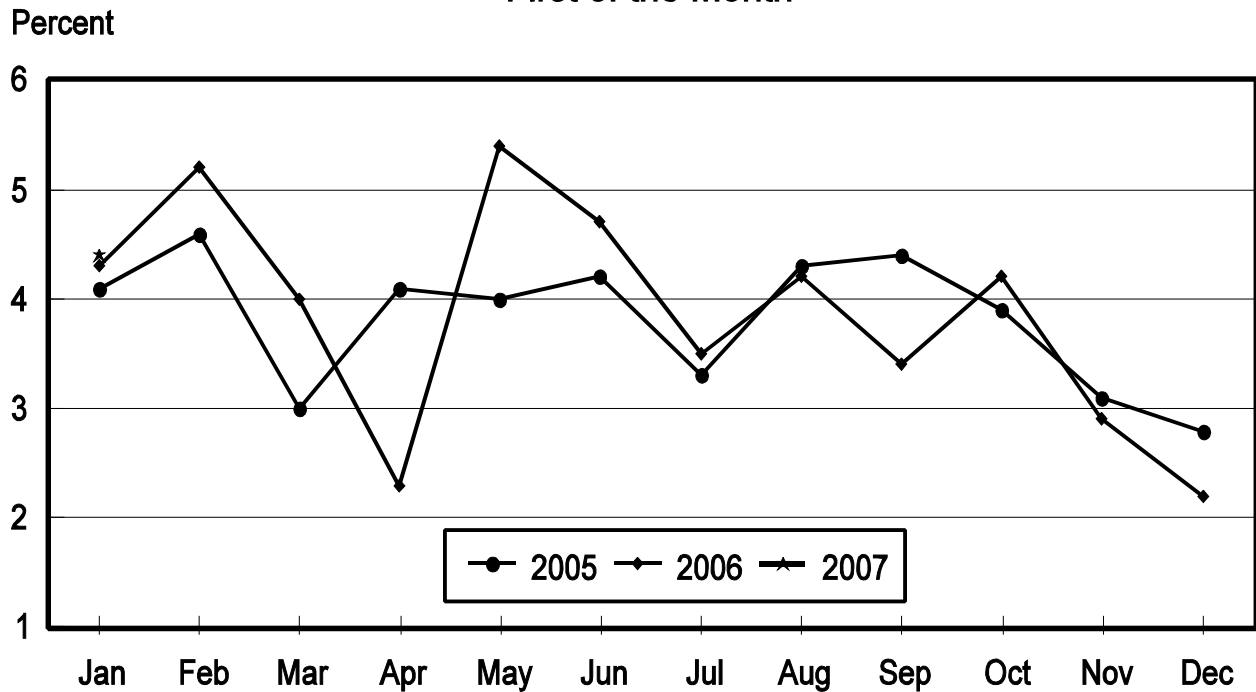
**Forced Molt: Percent of All Layers by Month,  
United States, 2006-07 <sup>1</sup>**

Month	Percent Being Molted		Percent with Molt Completed	
	2006	2007	2006	2007
	<i>Percent</i>	<i>Percent</i>	<i>Percent</i>	<i>Percent</i>
Jan	4.3	4.4	23.0	24.4
Feb	5.2		23.8	
Mar	4.0		24.4	
Apr	2.3		24.9	
May	5.4		23.6	
Jun	4.7		24.7	
Jul	3.5		25.7	
Aug	4.2		25.2	
Sep	3.4		25.9	
Oct	4.2		25.8	
Nov	3.0		26.0	
Dec <sup>2</sup>	2.2		26.6	

<sup>1</sup> As of first of month.

<sup>2</sup> Revised 2006 only.

## All Layers: Percent Being Molted United States, 2005 - 2007 First of the Month



**Forced Molt: Percent of All Layers by State  
and United States, January 2006-07 <sup>1</sup>**

State	Percent Being Molted		Percent with Molt Completed	
	2006 <sup>2</sup>	2007	2006 <sup>2</sup>	2007
	<i>Percent</i>	<i>Percent</i>	<i>Percent</i>	<i>Percent</i>
AL	1.0	1.5	7.0	4.5
AR	0.5	2.5	11.5	11.5
CA	9.0	5.5	31.0	35.0
CO	9.0	3.0	23.5	21.0
CT	0.0	3.5	11.5	13.0
FL	6.0	7.0	36.0	32.5
GA	2.5	4.5	13.0	14.0
HI	4.5	5.5	54.0	65.0
IL	7.0	6.0	32.0	30.5
IN	3.5	4.5	29.0	31.0
IA	6.0	6.5	31.5	35.0
ME	0.0	0.0	0.0	0.0
MD	3.0	5.5	37.0	40.0
MI	2.5	2.0	21.0	34.0
MN	5.5	1.0	25.0	30.5
MS	2.0	3.0	9.0	9.5
MO	5.0	4.0	23.5	18.5
NE	8.0	5.0	28.5	21.0
NY	3.5	1.5	8.0	7.5
NC	0.0	0.0	8.5	10.5
OH	4.0	3.5	16.5	25.5
OR	11.0	6.5	27.5	31.0
PA	4.0	3.5	18.5	14.5
SC	5.5	3.5	25.5	32.0
SD	4.0	5.0	19.5	21.5
TX	3.5	6.5	24.5	23.5
VA	2.5	0.0	16.5	13.0
WA	5.0	9.5	41.0	40.0
WI	9.5	6.5	30.0	22.5
Oth Sts <sup>3</sup>	2.4	4.3	24.5	24.0
US	4.3	4.4	23.0	24.4

<sup>1</sup> As of first of month.

<sup>2</sup> Revised.

<sup>3</sup> Not published separately to avoid disclosing data for individual operations.

**Hatchery Production: Eggs in Incubators, Chicks Hatched,  
and Placements by Type, United States, December-January 2006-07**

Item	2006	2007	2007 as % of 2006
	<i>1,000</i>	<i>1,000</i>	<i>Percent</i>
<b>Egg-Type</b>			
Eggs in Incubators on Jan 1	35,547	34,383	97
Chicks Hatched During Dec <sup>1</sup>	35,917	33,430	93
Chicks Hatched Jan thru Dec <sup>1</sup>	437,177	427,048	98
Pullets Hatched During Jan for Intended Placements in Hatchery Supply Flocks 7-18 Month Earlier <sup>2</sup>	247 2,874	205 2,834	83 99
<b>Broiler-Type</b>			
Eggs in Incubators on Jan 1	660,613	652,471	99
Chicks Hatched During Dec <sup>1</sup>	808,525	795,445	98
Chicks Hatched Jan thru Dec <sup>1</sup>	9,484,119	9,417,911	99
Pullets Hatched During Jan for Intended Placements in Hatchery Supply Flocks 7-15 Months Earlier <sup>3</sup>	7,112 63,509	7,196 64,040	101 101

<sup>1</sup> Previous year.

<sup>2</sup> 2006 includes pullet chicks hatched Jun 2005 through May 2006.

<sup>3</sup> 2006 includes pullet chicks hatched Sep 2005 through May 2006.

**Egg-Type Eggs in Incubators: By Region and United States,  
January 1, 2006-07**

Region	2006	2007	2007 as % of 2006
	<i>1,000</i>	<i>1,000</i>	<i>Percent</i>
North Atlantic	6,229	6,167	99
E North Central	7,036	7,146	102
W North Central	8,258	8,005	97
South Atlantic	4,306	3,772	88
South Central	5,949	4,029	68
West	3,769	5,264	140
US	35,547	34,383	97

**Regions:**

North Atlantic = CT, ME, MA, NH, NJ, NY, PA, RI, VT.

E North Central = IL, IN, MI, OH, WI.

W North Central = IA, KS, MN, MO, NE, ND, SD.

South Atlantic = DE, FL, GA, MD, NC, SC, VA, WV.

South Central = AL, AR, KY, LA, MS, OK, TN, TX.

West = AK, AZ, CA, CO, HI, ID, MT, NM, NV, OR, UT, WA, WY.

**Egg-Type Chicks Hatched: By State and United States,  
December 2005-06**

State	During December			Jan-Dec		
	2005	2006	2006 as % of 2005	2005	2006	2006 as % of 2005
	<i>1,000</i>	<i>1,000</i>	<i>Percent</i>	<i>1,000</i>	<i>1,000</i>	<i>Percent</i>
GA	2,384	2,286	96	27,126	26,694	98
IN	5,288	4,934	93	60,894	58,325	96
IA	6,517	5,877	90	75,054	79,634	106
MN	1,050	1,065	101	12,945	11,900	92
PA	4,889	4,447	91	57,743	52,672	91
Oth Sts <sup>1</sup>	15,789	14,821	94	203,415	197,823	97
US	35,917	33,430	93	437,177	427,048	98

<sup>1</sup> Not published separately to avoid disclosing data for individual operations.

**Egg-Type Chicks Hatched: By Month, United States, 2005-06**

Month	By Months			Cumulative		
	2005	2006	2006 as % of 2005	2005	2006	2006 as % of 2005
	<i>1,000</i>	<i>1,000</i>	<i>Percent</i>	<i>1,000</i>	<i>1,000</i>	<i>Percent</i>
Jan	38,291	35,422	93	38,291	35,422	93
Feb	34,427	33,665	98	72,718	69,087	95
Mar	41,701	38,918	93	114,419	108,005	94
Apr	38,049	34,613	91	152,468	142,618	94
May	38,792	40,320	104	191,260	182,938	96
Jun	35,034	37,700	108	226,294	220,638	98
Jul	34,897	33,224	95	261,191	253,862	97
Aug	38,700	34,892	90	299,891	288,754	96
Sep	33,623	36,845	110	333,514	325,599	98
Oct	35,461	36,271	102	368,975	361,870	98
Nov	32,285	31,748	98	401,260	393,618	98
Dec	35,917	33,430	93	437,177	427,048	98

**Intended Placements: Egg-Type Pullet Chicks for Hatchery Supply  
Flocks by Month and Total, United States, 2005-06<sup>1</sup>**

Month	Pullet Chicks Hatched		2006 as % of 2005	Cumulative Potential Plcmts Relative to Current Supply Flocks 7-18 Months Earlier <sup>2</sup>	
	2005	2006		2006	2007
	<i>1,000</i>	<i>1,000</i>	<i>Percent</i>	<i>1,000</i>	<i>1,000</i>
Jan	157	188	120	2,837	2,842
Feb	208	196	94	2,845	2,920
Mar	314	286	91	2,788	2,912
Apr	308	255	83	2,958	2,785
May	190	241	127	2,878	2,820
Jun	175	183	105	2,833	2,846
Jul	242	320	132	2,845	2,804
Aug	261	253	97	2,876	
Sep	375	248	66	2,864	
Oct	188	223	119	2,836	
Nov	180	206	114	2,783	
Dec	247	205	83	2,834	
Total	2,845	2,804	99		

<sup>1</sup> Reported by leading breeders. Coverage may not be 100 percent. Includes expected pullet chicks from eggs sold during the preceding month at the rate of 125 pullet chicks per 30 dozen case of eggs.

<sup>2</sup> For December 2006, includes breeder pullet chicks hatched Jun 2005 through May 2006. The 7-18 months represent the first laying cycle. Molting and additional laying cycles will increase the cumulative potential placements.

**Broiler-Type Eggs in Incubators: By Region  
and United States, January 1, 2006-07**

Region	2006	2007	2007 as % of 2006
	<i>1,000</i>	<i>1,000</i>	<i>Percent</i>
North Atlantic	11,379	11,775	103
E North Central	9,413	9,799	104
W North Central	22,967	22,959	100
South Atlantic	242,458	244,091	101
South Central	350,504	338,741	97
West	23,892	25,106	105
US	660,613	652,471	99



**Broiler-Type Chicks Hatched: By State  
and United States, December 2005-06**

State	During December			Jan-Dec		
	2005	2006	2006 as % of 2005	2005	2006	2006 as % of 2005
	<i>1,000</i>	<i>1,000</i>	<i>Percent</i>	<i>1,000</i>	<i>1,000</i>	<i>Percent</i>
AL	115,375	112,745	98	1,342,334	1,352,037	101
AR	114,254	108,372	95	1,333,454	1,297,449	97
DE	14,741	14,428	98	173,294	167,511	97
FL	5,039	4,874	97	59,039	58,972	100
GA	122,618	127,185	104	1,436,529	1,480,970	103
KY	25,240	26,818	106	303,178	307,911	102
LA	15,064	13,837	92	176,517	172,294	98
MD	32,687	31,019	95	379,409	374,772	99
MS	69,691	64,813	93	828,700	782,576	94
NC	68,078	68,974	101	791,244	803,060	101
OK	24,132	23,635	98	282,843	274,415	97
PA	14,716	14,713	100	172,307	168,756	98
SC	18,537	19,514	105	217,911	225,856	104
TX	56,744	53,074	94	656,440	646,169	98
VA	23,655	22,997	97	279,883	275,388	98
CA, MO, TN, & WV	65,967	66,158	100	784,553	766,227	98
19 Sts <sup>1</sup>	786,538	773,156	98	9,217,635	9,154,363	99
Oth Sts <sup>2</sup>	21,987	22,289	101	266,484	263,548	99
US	808,525	795,445	98	9,484,119	9,417,911	99

<sup>1</sup> States in the weekly hatchery production estimating program.

<sup>2</sup> Not published separately to avoid disclosing data for individual operations.

**Broiler-Type Chicks Hatched: By Month, United States, 2005-06**

Month	By Months			Cumulative		
	2005	2006	2006 as % of 2005	2005	2006	2006 as % of 2005
	<i>1,000</i>	<i>1,000</i>	<i>Percent</i>	<i>1,000</i>	<i>1,000</i>	<i>Percent</i>
Jan	797,576	804,073	101	797,576	804,073	101
Feb	732,038	733,145	100	1,529,614	1,537,218	100
Mar	816,552	817,068	100	2,346,166	2,354,286	100
Apr	792,173	787,064	99	3,138,339	3,141,350	100
May	823,993	810,908	98	3,962,332	3,952,258	100
Jun	796,945	787,791	99	4,759,277	4,740,049	100
Jul	808,382	800,132	99	5,567,659	5,540,181	100
Aug	812,474	809,284	100	6,380,133	6,349,465	100
Sep	771,146	771,719	100	7,151,279	7,121,184	100
Oct	776,449	771,822	99	7,927,728	7,893,006	100
Nov	747,866	729,460	98	8,675,594	8,622,466	99
Dec	808,525	795,445	98	9,484,119	9,417,911	99

**Intended Placements: Broiler-Type Pullet Chicks for Hatchery  
Supply Flocks by Month and Total, 2005-06 <sup>1</sup>**

Month	Pullet Chicks Hatched		2006 as % of 2005	Cumulative Potential Plcmts Relative to Current Supply Flocks 7-15 Months Earlier <sup>2</sup>	
	2005	2006		2006	2007
	<i>1,000</i>	<i>1,000</i>	<i>Percent</i>	<i>1,000</i>	<i>1,000</i>
US Place- ments					
Jan	6,409	6,825	106	62,860	64,544
Feb	7,325	7,593	104	63,060	64,056
Mar	7,077	7,012	99	63,416	64,389
Apr	6,800	6,593	97	63,776	64,340
May	7,783	7,531	97	64,311	64,259
Jun	7,109	7,636	107	64,284	64,284
Jul	6,657	6,456	97	64,319	64,468
Aug	7,484	7,631	102	64,344	
Sep	7,132	7,063	99	64,154	
Oct	6,944	6,744	97	64,057	
Nov <sup>3</sup>	7,298	7,618	104	63,993	
Dec	7,112	7,196	101	64,040	
Annual Total	85,130	85,898	101		
Total Place- ments <sup>4</sup>					
Jan	7,804	8,018	103		
Feb	8,664	9,026	104		
Mar	8,709	8,415	97		
Apr	7,995	7,558	95		
May	8,995	8,930	99		
Jun	8,571	9,144	107		
Jul	7,846	7,845	100		
Aug	9,084	9,170	101		
Sep	8,683	8,742	101		
Oct	8,279	8,028	97		
Nov <sup>5</sup>	8,830	9,550	108		
Dec	8,256	8,720	106		
Annual Total	101,716	103,146	101		

<sup>1</sup> Reported by leading breeders. Coverage may not be 100 percent. Includes expected pullet chicks from eggs sold during the preceding month at the rate of 125 pullet chicks per 30 dozen case of eggs.

<sup>2</sup> For Dec 2006, includes breeder pullet chicks hatched Sep 2005 through May 2006.

<sup>3</sup> Revision to 2006 pullet chicks hatched and cumulative placements for June 2007.

<sup>4</sup> U.S. production of intended placements worldwide.

<sup>5</sup> Revision to 2006 only.

## Reliability of Chicken and Eggs Estimates

**Survey Procedures:** Primary data for the "Chickens and Eggs" report are from weekly and/or monthly questionnaires sent to producers. An attempt is made to collect information for layer and egg estimates from each known contractor and independent producer who has at least 30,000 table egg layers, flocks of hatchery supply layers, or pullet only operations with at least 500 pullets. Coverage for operations with less than 30,000 table egg layers are estimated each month based on data reported in December. Approximately 650 contractors, independent egg producers, and pullet only operations are contacted each month. All known hatcheries, approximately 330, are contacted for information on a weekly and/or monthly basis.

**Revision Policy:** The previous month's estimates are subject to revision if late reports or corrected data indicates a different level. Additionally, revisions after the monthly report will be made at the end of the marketing year and published in the annual reports of "Chickens and Eggs Summary" and "Hatchery Production".

**Reliability:** Operations are mailed a questionnaire and given adequate time to respond by mail. Those that do not respond are phoned. Great care is exercised to ensure that all operations are accounted for during each survey period. However, there are usually missing reports that must be accounted for in the estimates.

Sound statistical methodology is employed to derive estimates from the reported data. All data are checked for unusual values. All operations' data are compared to their own past operating profiles and also to trends from other operations. Data for missing operations are estimated based on similar operations or historical data. Survey data are subject to non-sampling errors such as omissions and mistakes in reporting and in processing. While these errors cannot be measured directly, they are minimized by reviewing all data for consistency and reasonableness.

Egg-type chicks hatched consist of all chicks of egg-type domesticated breeds including males and chicks destined for hatchery supply flocks and research purposes. The relationship of chicks hatched to chicken inventory and poultry marketings is carefully monitored. The disposition of egg-type chicks hatched prior to placement into the laying flock can vary significantly, which can make comparisons to changes in layer inventory inconsistent over time.

Intended placement data reported by leading breeders include pullet chicks expected from eggs sold the preceding month. The breeders in this report account for a large percentage of replacement pullets for hatchery supply flocks. Production of replacement pullets by these breeders indicates the number of pullets available to hatchery supply flocks several months before the pullets will actually move into the flocks. "Hatchery Supply Flocks" include all generations of layers which could lay eggs to supply a hatchery. This includes the generations of parents, grandparents, great-grandparents, pedigree, etc. Also included are research flocks, vaccine flocks, and specific pathogen-free flocks. The broiler cumulative potential placements are a moving total of the intended placements 7-15 months earlier. The egg-type cumulative potential placements of 7-18 months represent the first laying cycle. Molting and additional laying cycles will increase the cumulative potential placements of egg-type hatching flocks.

## Information Contacts

Listed below are the commodity specialists in the Livestock Branch of the National Agricultural Statistics Service to contact for additional information.

Dan Kerestes, Chief, Livestock Branch	(202) 720-3570
Darin Jantzi, Head, Poultry and Specialty Commodities Section	(202) 720-3570
Mark Aitken - Layers, Eggs	(202) 690-8632
David Colwell - Cold Storage	(202) 720-8784
Fleming Gibson - Egg Products, Poultry Slaughter, Catfish Processing, Mink, Turkey Hatchery, Turkeys Raised	(202) 690-3237
Darin Jantzi - Catfish Production, Trout Production, Census of Aquaculture	(202) 720-3570
Sharyn Lavender - Broiler Hatchery, Chicken Hatchery, Honey	(202) 720-3244

## ACCESS TO REPORTS!!

---

For your convenience, there are several ways to obtain NASS reports, data products, and services:

### INTERNET ACCESS

All NASS reports are available free of charge on the worldwide Internet. For access, connect to the Internet and go to the NASS Home Page at: [www.nass.usda.gov](http://www.nass.usda.gov).

### E-MAIL SUBSCRIPTION

All NASS reports are available by subscription free of charge direct to your e-mail address. Starting with the NASS Home Page at [www.nass.usda.gov](http://www.nass.usda.gov), under the right navigation, *Receive reports by Email*, click on **National** or **State**. Follow the instructions on the screen.

-----

### PRINTED REPORTS OR DATA PRODUCTS

**CALL OUR TOLL-FREE ORDER DESK: 800-999-6779 (U.S. and Canada)**  
**Other areas, please call 703-605-6220      FAX: 703-605-6900**  
**(Visa, MasterCard, check, or money order acceptable for payment.)**

-----

### ASSISTANCE

For **assistance** with general agricultural statistics or further information about NASS or its products or services, contact the **Agricultural Statistics Hotline** at **800-727-9540**, 7:30 a.m. to 4:00 p.m. ET, or e-mail: [nass@nass.usda.gov](mailto:nass@nass.usda.gov).

The U.S. Department of Agriculture (USDA) prohibits discrimination in all its programs and activities on the basis of race, color, national origin, age, disability, and where applicable, sex, marital status, familial status, parental status, religion, sexual orientation, genetic information, political beliefs, reprisal, or because all or a part of an individual's income is derived from any public assistance program. (Not all prohibited bases apply to all programs.) Persons with disabilities who require alternative means for communication of program information (Braille, large print, audiotape, etc.) should contact USDA's TARGET Center at (202) 720-2600 (voice and TDD).

To file a complaint of discrimination, write to USDA, Director, Office of Civil Rights, 1400 Independence Avenue, S.W., Washington, D.C. 20250-9410, or call (800) 795-3272 (voice) or (202) 720-6382 (TDD). USDA is an equal opportunity provider and employer.

# Agriculture at the Crossroads: Energy, Farm & Rural Policy



**March 1-2, 2007**  
**Crystal Gateway**  
**Marriott Hotel**  
**Arlington, Virginia**

The Forum will feature Secretary Mike Johanns, distinguished guest speakers, and a panel of America's leading CEOs focusing on the impact of bioenergy on agriculture. Attendees at the 83<sup>rd</sup> annual Outlook Forum will include top officials, industry analysts, business leaders, farmers and ranchers, and other experts in agriculture.

- \$300 if you register by Feb. 5, 2007
- \$350 if you register after Feb. 5, 2007

For a program preview & to register, go to:  
[www.usda.gov/oce/forum](http://www.usda.gov/oce/forum)

- Topical sessions, including luncheon and dinner speakers
- Networking opportunities, 1,500 expected to attend

Find full program and registration details at [agforum@oce.usda.gov](mailto:agforum@oce.usda.gov) or write to 2007 Outlook Forum, Room 4426 South Building, USDA, Washington, D.C. 20250-3812.

