



# NASS

FACT FINDERS FOR AGRICULTURE  
UNITED STATES DEPARTMENT OF AGRICULTURE

Washington, D.C.

# Chickens And Eggs

---

Released February 27, 2007, by the National Agricultural Statistics Service (NASS), Agricultural Statistics Board, U.S. Department of Agriculture. For information on "Layers and Eggs" call Mark Aitken at (202) 690-8632, for "Chicks Hatched" call Sharyn Lavender at (202) 720-3244, office hours 7:30 a.m. to 4:00 p.m. ET.

## January Egg Production Down 1 Percent

U.S. egg production totaled 7.64 billion during January 2007, down 1 percent from last year. Production included 6.54 billion table eggs, and 1.10 billion hatching eggs, of which 1.03 billion were broiler-type and 67 million were egg-type. The total number of layers during January 2007 averaged 347 million, down 1 percent from last year. January egg production per 100 layers was 2,200 eggs, down slightly from January 2006.

All layers in the U.S. on February 1, 2007 totaled 347 million, down 1 percent from last year. The 347 million layers consisted of 288 million layers producing table or market type eggs, 55.7 million layers producing broiler-type hatching eggs, and 2.81 million layers producing egg-type hatching eggs. Rate of lay per day on February 1, 2007, averaged 70.7 eggs per 100 layers, down slightly from February 1, 2006.

## Egg-Type Chicks Hatched Up 4 Percent

Egg-type chicks hatched during January 2007 totaled 36.9 million, up 4 percent from January 2006. Eggs in incubators totaled 37.0 million on February 1, 2007, up 10 percent from a year ago.

Domestic placements of egg-type pullet chicks for future hatchery supply flocks by leading breeders totaled 265,000 during January 2007, up 41 percent from January 2006.

## Broiler-Type Chicks Hatched Down 1 Percent

Broiler-type chicks hatched during January 2007 totaled 797 million, down 1 percent from January 2006. Eggs in incubators totaled 649 million on February 1, 2007, down 2 percent from a year earlier.

Leading breeders placed 7.02 million broiler-type pullet chicks for future domestic hatchery supply flocks during January 2007, up 3 percent from January 2006.



## Contents

## Page

U.S. Average Number of Layers on Hand and Egg Production .....	1
U.S. Layers on Hand and Eggs Produced by Type, Forced Molt, and Pullets .....	3
Layers on Hand and Eggs Produced by State .....	5
Egg Production by Type and State .....	7
Forced Molt .....	9
Egg-Type Hatchery .....	11
Egg-Type Intended Placements .....	13
Broiler-Type Hatchery .....	13
Broiler-Type Intended Placements .....	15
Procedures and Reliability .....	16
Information Contacts .....	16

**All Layers: Average Number on Hand During the Month,  
United States, 2005-07 <sup>1</sup>**

Month	2005	2006	2007
	<i>1,000 Layers</i>	<i>1,000 Layers</i>	<i>1,000 Layers</i>
Dec <sup>2</sup>	345,615	348,810	348,098
Jan	347,874	349,677	347,122
Feb	348,784	350,018	
Mar	347,120	350,470	
Apr	343,927	348,643	
May	342,162	345,223	
Jun	340,200	342,685	
Jul	338,917	341,252	
Aug	339,777	341,540	
Sep	341,433	343,147	
Oct	343,381	344,538	
Nov	346,314	346,936	

<sup>1</sup> Revised.

<sup>2</sup> December preceding year.

**Eggs: Production During the Month by Type,  
United States, 2006-07 <sup>1</sup>**

Month	Total Eggs		Table Eggs		Hatching Eggs	
	2006 <sup>2</sup>	2007	2006 <sup>2</sup>	2007	2006 <sup>2</sup>	2007
	<i>Million Eggs</i>	<i>Million Eggs</i>	<i>Million Eggs</i>	<i>Million Eggs</i>	<i>Million Eggs</i>	<i>Million Eggs</i>
Dec <sup>3</sup>	7,793	7,777	6,697	6,683	1,096	1,094
Jan	7,727	7,636	6,622	6,535	1,105	1,101
Feb	6,980		5,983		997	
Mar	7,843		6,732		1,112	
Apr	7,543		6,468		1,075	
May	7,637		6,520		1,117	
Jun	7,401		6,336		1,066	
Jul	7,645		6,550		1,095	
Aug	7,647		6,557		1,090	
Sep	7,430		6,379		1,051	
Oct	7,678		6,600		1,078	
Nov	7,549		6,506		1,043	
During Year	90,877		77,954		12,927	

<sup>1</sup> Totals may not add due to rounding.

<sup>2</sup> Revised.

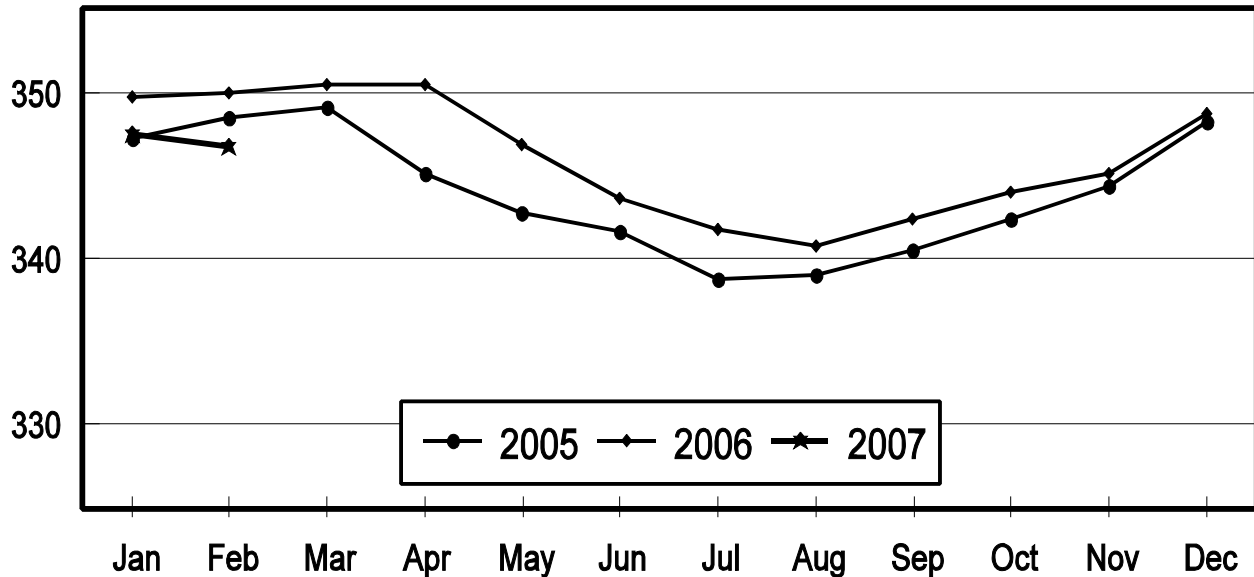
<sup>3</sup> December preceding year.

# All Layers: Inventory

## United States, 2005 - 2007

### First of the Month

Million Layers

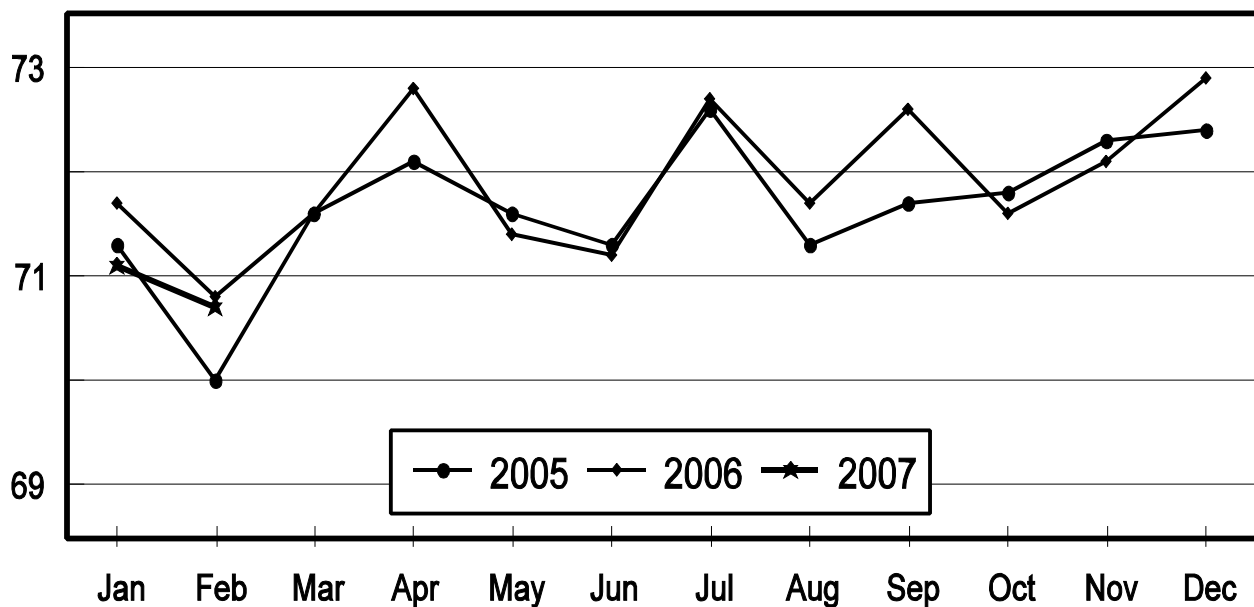


# All Layers: Rate of Lay

## United States, 2005 - 2007

### First of the Month

Eggs Per 100 Layers



**Layers and Eggs: Layers on Hand and Eggs Produced by Type,  
and Forced Molt, United States, December-January 2005-07<sup>1 2</sup>**

Item	Unit	2005	2006	2006 as % of 2005
Layers During Dec	1,000			
All Layers		348,810	348,098	100
Table Egg Type		290,440	290,377	100
Hatching Egg Type		58,370	57,721	99
Broiler-Type Hatching		55,653	54,876	99
Egg-Type Hatching		2,717	2,845	105
Eggs per 100 Layers During Dec	Number			
All Layers		2,234	2,234	100
Table Egg Type		2,306	2,301	100
Hatching Egg Type		1,878	1,895	101
Broiler-Type Hatching		1,853	1,873	101
Egg-Type Hatching		2,392	2,320	97
Eggs Produced During Dec	Million			
All Layers		7,793	7,777	100
Table Egg Type		6,697	6,683	100
Hatching Egg Type		1,096	1,094	100
Broiler-Type Hatching		1,031	1,028	100
Egg-Type Hatching		65	66	102
		2006	2007	2007 as % of 2006
Layers on Jan 1	1,000			
All Layers		349,763	347,428	99
Table Egg Type		290,931	289,466	99
Hatching Egg Type		58,832	57,962	99
Broiler-Type Hatching		56,090	55,098	98
Egg-Type Hatching		2,742	2,864	104
Eggs per 100 Layers on Jan 1	Number			
All Layers		71.7	71.1	99
Table Egg Type		74.0	73.1	99
Hatching Egg Type		60.8	61.2	101
Broiler-Type Hatching		60.0	60.4	101
Egg-Type Hatching		76.4	75.0	98
Forced Molt Layers on Jan 1	Percent			
Percent Being Molted		4.3	4.4	102
Percent with Molt Completed		23.0	24.5	107
Layers Sold for Slaughter During Dec	1,000	14,186	12,854	91
Layers Rendered, Died, Destroyed, Composted or Disappeared For Any Reason During Dec	1,000	5,469	7,260	133
Pullets on Jan 1	1,000	98,180	94,747	97
Pullets Added During Dec <sup>3</sup>	1,000	23,987	20,521	86

<sup>1</sup> Totals may not add due to rounding.

<sup>2</sup> Revised.

<sup>3</sup> Pullet chicks less than 3 days old added to pullet flocks.

**Layers and Eggs: Layers on Hand and Eggs Produced by Type,  
and Forced Molt, United States, January-February 2006-07 <sup>1</sup>**

Item	Unit	2006 <sup>2</sup>	2007	2007 as % of 2006
Layers During Jan	1,000			
All Layers		349,677	347,122	99
Table Egg Type		290,772	288,895	99
Hatching Egg Type		58,905	58,227	99
Broiler-Type Hatching		56,070	55,390	99
Egg-Type Hatching		2,835	2,837	100
Eggs per 100 Layers During Jan	Number			
All Layers		2,210	2,200	100
Table Egg Type		2,277	2,262	99
Hatching Egg Type		1,876	1,891	101
Broiler-Type Hatching		1,853	1,867	101
Egg-Type Hatching		2,328	2,362	101
Eggs Produced During Jan	Million			
All Layers		7,727	7,636	99
Table Egg Type		6,622	6,535	99
Hatching Egg Type		1,105	1,101	100
Broiler-Type Hatching		1,039	1,034	100
Egg-Type Hatching		66	67	102
Layers on Feb 1	1,000			
All Layers		349,930	346,778	99
Table Egg Type		290,972	288,304	99
Hatching Egg Type		58,958	58,474	99
Broiler-Type Hatching		56,040	55,668	99
Egg-Type Hatching		2,918	2,806	96
Eggs per 100 Layers on Feb 1	Number			
All Layers		70.8	70.7	100
Table Egg Type		72.9	72.7	100
Hatching Egg Type		60.1	60.4	100
Broiler-Type Hatching		59.4	59.5	100
Egg-Type Hatching		73.9	78.2	106
Forced Molt Layers on Feb 1	Percent			
Percent Being Molted		5.2	3.4	65
Percent with Molt Completed		23.7	24.2	102
Layers Sold for Slaughter During Jan	1,000	14,783	12,746	86
Layers Rendered, Died, Destroyed, Composted or Disappeared For Any Reason During Jan	1,000	5,949	7,472	126
Pullets on Feb 1	1,000	98,125	95,896	98
Pullets Added During Jan <sup>3</sup>	1,000	21,486	22,760	106

<sup>1</sup> Totals may not add due to rounding.

<sup>2</sup> Revised.

<sup>3</sup> Pullet chicks less than 3 days old added to pullet flocks.

**Layers and Eggs: Layers on Hand and Eggs Produced by State  
and United States, During December 2005-06 <sup>1</sup>**

State	Table Egg Layers in Flocks 30,000 and Above		All Layers <sup>2</sup>		Eggs per 100 for All Layers <sup>2</sup>	
	2005	2006	2005	2006	2005	2006
	<i>1,000</i>	<i>1,000</i>	<i>1,000</i>	<i>1,000</i>	<i>Number</i>	<i>Number</i>
AL	1,685	1,503	9,013	8,615	1,908	1,962
AR	4,280	4,374	14,559	14,066	1,985	1,962
CA	19,165	19,142	19,576	19,615	2,243	2,197
CO	3,349	3,196	3,889	3,721	2,417	2,338
CT	2,964	2,960	3,016	3,015	2,354	2,421
FL	11,012	10,773	11,481	11,271	2,291	2,271
GA	9,934	10,039	19,524	19,791	2,120	2,117
HI	465	396	479	409	1,837	1,809
IL	4,258	4,913	4,486	5,146	2,251	2,312
IN	23,836	23,922	24,523	24,655	2,308	2,275
IA	49,593	51,326	50,350	52,164	2,230	2,220
ME	3,914	3,877	3,990	3,944	2,381	2,155
MD	2,704	2,428	2,872	2,602	2,263	2,306
MI	8,010	8,852	8,260	9,102	2,349	2,351
MN	10,605	10,659	11,113	11,130	2,322	2,291
MS	1,671	1,619	6,704	6,401	1,984	2,047
MO	5,874	6,170	7,024	7,271	2,093	2,256
NE	11,853	11,460	11,928	11,535	2,222	2,315
NY	3,710	3,819	3,940	4,344	2,462	2,486
NC	3,333	3,833	10,970	11,497	2,015	2,088
OH	28,678	27,017	29,217	27,544	2,303	2,305
OR	2,598	2,410	2,771	2,583	2,454	2,555
PA	22,578	22,174	24,444	23,898	2,320	2,381
SC	3,856	3,726	4,999	4,883	2,260	2,253
SD	3,200	3,096	3,300	3,196	2,333	2,159
TX	14,461	14,543	18,859	18,894	2,312	2,276
VA	1,593	1,298	3,530	3,184	2,153	2,104
WA	4,867	4,910	4,932	4,973	2,271	2,272
WI	4,215	4,442	4,732	5,012	2,346	2,374
Oth Sts <sup>3</sup>	16,374	15,670	24,329	23,637	2,236	2,196
US	284,635	284,547	348,810	348,098	2,234	2,234

<sup>1</sup> Revised.

<sup>2</sup> Includes all layers and eggs produced in both table egg and hatching egg flocks regardless of size.

<sup>3</sup> Not published separately to avoid disclosing data for individual operations.



**Layers and Eggs: Layers on Hand and Eggs Produced by State  
and United States, During January 2006-07**

State	Table Egg Layers in Flocks 30,000 and Above		All Layers <sup>1</sup>		Eggs per 100 for All Layers <sup>1</sup>	
	2006 <sup>2</sup>	2007	2006 <sup>2</sup>	2007	2006 <sup>2</sup>	2007
	<i>1,000</i>	<i>1,000</i>	<i>1,000</i>	<i>1,000</i>	<i>Number</i>	<i>Number</i>
AL	1,658	1,228	8,946	8,336	1,923	1,955
AR	4,069	4,430	14,337	14,253	1,953	1,894
CA	18,930	19,134	19,393	19,610	2,207	2,132
CO	3,296	3,244	3,818	3,776	2,462	2,331
CT	2,904	2,929	2,958	2,982	2,299	2,381
FL	11,057	10,809	11,513	11,315	2,206	2,227
GA	9,923	10,089	19,662	19,881	2,085	2,062
HI	464	391	478	403	1,841	1,811
IL	4,284	4,831	4,516	5,062	2,192	2,292
IN	23,965	23,785	24,696	24,498	2,251	2,233
IA	50,350	50,889	51,125	51,773	2,249	2,167
ME	3,963	3,931	4,034	3,997	2,305	2,077
MD	2,729	2,530	2,872	2,676	2,194	2,242
MI	7,912	8,644	8,169	8,901	2,326	2,337
MN	10,734	10,597	11,199	11,064	2,250	2,296
MS	1,622	1,600	6,835	6,579	1,946	2,006
MO	5,937	6,154	7,071	7,306	2,121	2,231
NE	11,834	11,380	11,909	11,455	2,225	2,313
NY	3,633	3,789	3,870	4,314	2,455	2,411
NC	3,442	4,025	11,075	11,688	2,023	2,053
OH	29,109	26,668	29,651	27,194	2,266	2,306
OR	2,497	2,340	2,670	2,498	2,322	2,442
PA	22,302	21,887	24,255	23,585	2,354	2,396
SC	3,856	3,633	5,012	4,762	2,294	2,163
SD	3,195	3,091	3,295	3,191	2,307	2,194
TX	14,340	14,679	18,748	19,089	2,267	2,216
VA	1,592	1,312	3,528	3,176	2,041	2,078
WA	4,811	4,838	4,880	4,904	2,172	2,325
WI	4,213	4,375	4,729	4,933	2,305	2,392
Oth Sts <sup>3</sup>	16,369	15,834	24,433	23,921	2,186	2,157
US	284,990	283,066	349,677	347,122	2,210	2,200

<sup>1</sup> Includes all layers and eggs produced in both table egg and hatching egg flocks regardless of size.

<sup>2</sup> Revised.

<sup>3</sup> Not published separately to avoid disclosing data for individual operations.

**Egg Production: By Type, State, and United States,  
December 2005-06<sup>1 2</sup>**

State	Total Production		Table Eggs <sup>3</sup>		Hatching Eggs <sup>3</sup>	
	2005	2006	2005	2006	2005	2006
	<i>Million Eggs</i>	<i>Million Eggs</i>	<i>Million Eggs</i>	<i>Million Eggs</i>	<i>Million Eggs</i>	<i>Million Eggs</i>
AL	172	169	40	36	132	133
AR	289	276	102	103	187	173
CA	439	431				
CO	94	87				
CT	71	73				
FL	263	256	254	247	9	9
GA	414	419	232	232	182	187
HI	8.8	7.4	8.8	7.4	0	0
IL	101	119	97	115	4	4
IN	566	561	554	548	12	13
IA	1,123	1,158	1,110	1,145	13	13
ME	95	85				
MD	65	60	63	58	2	2
MI	194	214				
MN	258	255	249	247	9	8
MS	133	131	40	40	93	91
MO	147	164				
NE	265	267	265	267	0	0
NY	97	108				
NC	221	240	83	98	138	142
OH	673	635				
OR	68	66	66	64	2	2
PA	567	569	549	549	18	20
SC	113	110	93	89	20	21
SD	77	69	77	69	0	0
TX	436	430				
VA	76	67	40	32	36	35
WA	112	113				
WI	111	119				
Oth Sts <sup>4</sup>	544	519	421	394	123	125
US	7,793	7,777	6,697	6,683	1,096	1,094

<sup>1</sup> Totals may not add due to rounding.

<sup>2</sup> Revised.

<sup>3</sup> Data by type of flock not shown for some States to avoid disclosing individual operations, data included in US totals.

<sup>4</sup> Not published separately to avoid disclosing data for individual operations.

**Egg Production: By Type, State, and United States,  
January 2006-07 <sup>1</sup>**

State	Total Production		Table Eggs <sup>2</sup>		Hatching Eggs <sup>2</sup>	
	2006 <sup>3</sup>	2007	2006 <sup>3</sup>	2007	2006 <sup>3</sup>	2007
	<i>Million Eggs</i>	<i>Million Eggs</i>	<i>Million Eggs</i>	<i>Million Eggs</i>	<i>Million Eggs</i>	<i>Million Eggs</i>
AL	172	163	40	29	132	134
AR	280	270	96	96	184	174
CA	428	418				
CO	94	88				
CT	68	71				
FL	254	252	245	243	9	9
GA	410	410	225	223	185	187
HI	8.8	7.3	8.8	7.3	0	0
IL	99	116	95	112	4	4
IN	556	547	543	534	13	13
IA	1,150	1,122	1,138	1,109	12	13
ME	93	83				
MD	63	60	61	58	2	2
MI	190	208				
MN	252	254	244	246	8	8
MS	133	132	38	38	95	94
MO	150	163				
NE	265	265	265	265	0	0
NY	95	104				
NC	224	240	84	99	140	141
OH	672	627				
OR	62	61	60	59	2	2
PA	571	565	550	545	21	20
SC	115	103	95	82	20	21
SD	76	70	76	70	0	0
TX	425	423				
VA	72	66	37	31	35	35
WA	106	114				
WI	109	118				
Oth Sts <sup>4</sup>	534	516	409	390	125	126
US	7,727	7,636	6,622	6,535	1,105	1,101

<sup>1</sup> Totals may not add due to rounding.

<sup>2</sup> Data by type of flock not shown for some States to avoid disclosing individual operations, data included in US totals.

<sup>3</sup> Revised.

<sup>4</sup> Not published separately to avoid disclosing data for individual operations.

**Forced Molt: Percent of All Layers by Month,  
United States, 2006-07 <sup>1</sup>**

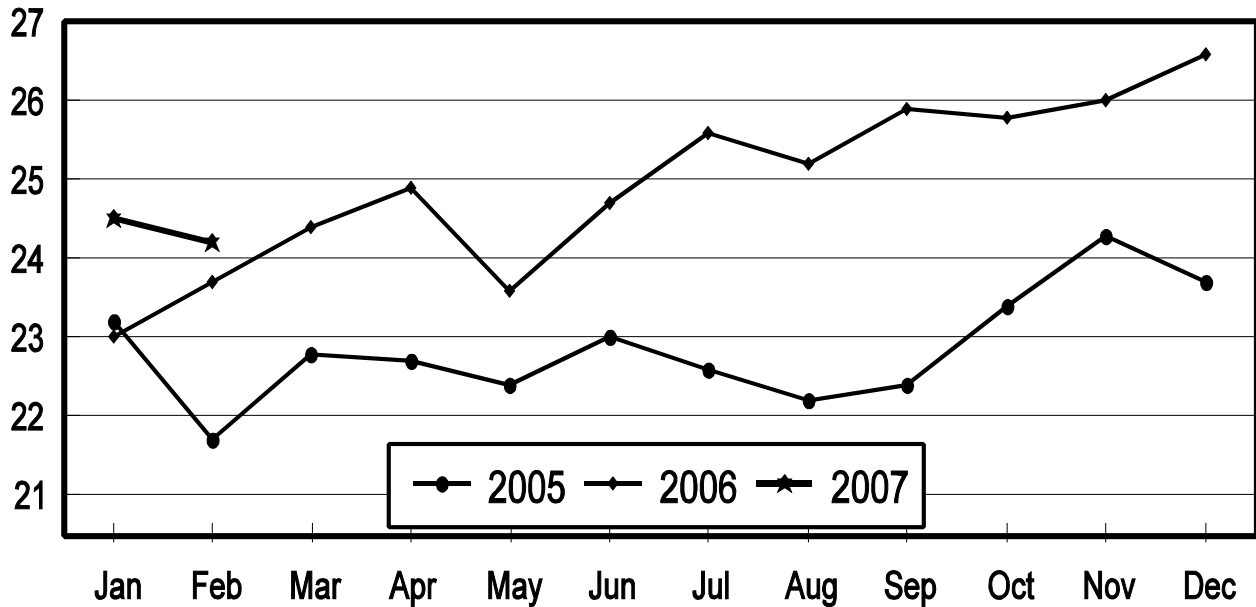
Month	Percent Being Molted		Percent with Molt Completed	
	2006 <sup>2</sup>	2007	2006 <sup>2</sup>	2007
	<i>Percent</i>	<i>Percent</i>	<i>Percent</i>	<i>Percent</i>
Jan	4.3	4.4	23.0	24.5
Feb	5.2	3.4	23.7	24.2
Mar	4.0		24.4	
Apr	2.3		24.9	
May	5.4		23.6	
Jun	4.7		24.7	
Jul	3.5		25.6	
Aug	4.2		25.2	
Sep	3.4		25.9	
Oct	4.3		25.8	
Nov	3.0		26.0	
Dec	2.2		26.6	

<sup>1</sup> As of first of month.

<sup>2</sup> Revised.

## All Layers: Percent Molt Completed United States, 2005 - 2007 First of the Month

Percent



**Forced Molt: Percent of All Layers by State  
and United States, February 2006-07 <sup>1</sup>**

State	Percent Being Molted		Percent with Molt Completed	
	2006 <sup>2</sup>	2007	2006 <sup>2</sup>	2007
	<i>Percent</i>	<i>Percent</i>	<i>Percent</i>	<i>Percent</i>
AL	0.5	0.5	7.0	5.0
AR	1.5	2.5	9.0	10.0
CA	10.0	5.5	31.0	32.5
CO	4.5	0.0	23.5	20.0
CT	8.0	4.0	11.5	15.0
FL	9.5	7.0	34.0	34.0
GA	6.0	2.0	11.5	15.5
HI	4.0	9.0	53.5	59.5
IL	7.0	7.0	31.0	35.0
IN	7.0	6.5	32.5	31.5
IA	5.0	3.5	35.0	37.0
ME	0.0	0.0	0.0	0.0
MD	7.5	6.0	30.0	38.0
MI	4.0	2.0	18.5	28.5
MN	5.0	1.0	28.5	29.0
MS	3.0	1.0	8.5	11.5
MO	4.0	1.5	21.0	18.5
NE	8.5	3.5	28.5	20.5
NY	8.5	5.0	7.5	7.5
NC	1.0	0.0	7.5	5.0
OH	4.5	1.0	19.0	27.0
OR	9.5	6.5	32.5	33.0
PA	2.0	3.5	20.5	12.5
SC	4.5	3.5	27.5	30.5
SD	4.0	5.0	19.0	22.0
TX	5.5	4.0	22.0	23.0
VA	5.5	2.5	14.0	10.5
WA	12.0	9.5	41.0	32.5
WI	2.0	2.5	35.0	26.0
Oth Sts <sup>3</sup>	4.7	4.0	25.2	24.5
US	5.2	3.4	23.7	24.2

<sup>1</sup> As of first of month.

<sup>2</sup> Revised.

<sup>3</sup> Not published separately to avoid disclosing data for individual operations.

**Hatchery Production: Eggs in Incubators, Chicks Hatched,  
and Placements by Type, United States, January-February 2006-07**

Item	2006	2007	2007 as % of 2006
	<i>1,000</i>	<i>1,000</i>	<i>Percent</i>
<b>Egg-Type</b>			
Eggs in Incubators on Feb 1	33,497	36,993	110
Chicks Hatched During Jan	35,422	36,926	104
Chicks Hatched Jan thru Jan	35,422	36,926	104
Pullets Hatched During Jan for Intended Placements in Hatchery Supply Flocks 7-18 Months Earlier <sup>1</sup>	188 2,837	265 2,842	141 100
<b>Broiler-Type</b>			
Eggs in Incubators on Feb 1	660,973	649,148	98
Chicks Hatched During Jan	804,073	797,066	99
Chicks Hatched Jan thru Jan	804,073	797,066	99
Pullets Hatched During Jan for Intended Placements in Hatchery Supply Flocks 7-15 Months Earlier <sup>2</sup>	6,825 62,860	7,015 64,544	103 103

<sup>1</sup> 2007 includes pullet chicks hatched Jul 2005 through Jun 2006.

<sup>2</sup> 2007 includes pullet chicks hatched Oct 2005 through Jun 2006.

**Egg-Type Eggs in Incubators: By Region and United States,  
February 1, 2006-07**

Region	2006	2007	2007 as % of 2006
	<i>1,000</i>	<i>1,000</i>	<i>Percent</i>
North Atlantic	5,920	6,259	106
E North Central	6,035	7,441	123
W North Central	7,535	9,046	120
South Atlantic	3,816	4,012	105
South Central	5,957	5,324	89
West	4,234	4,911	116
US	33,497	36,993	110

Regions:

North Atlantic = CT, ME, MA, NH, NJ, NY, PA, RI, VT.

E North Central = IL, IN, MI, OH, WI.

W North Central = IA, KS, MN, MO, NE, ND, SD.

South Atlantic = DE, FL, GA, MD, NC, SC, VA, WV.

South Central = AL, AR, KY, LA, MS, OK, TN, TX.

West = AK, AZ, CA, CO, HI, ID, MT, NM, NV, OR, UT, WA, WY.

**Egg-Type Chicks Hatched: By State and United States,  
January 2006-07**

State	During January			Jan-Jan		
	2006	2007	2007 as % of 2006	2006	2007	2007 as % of 2006
	<i>1,000</i>	<i>1,000</i>	<i>Percent</i>	<i>1,000</i>	<i>1,000</i>	<i>Percent</i>
GA	2,389	2,291	96	2,389	2,291	96
IN	5,196	5,799	112	5,196	5,799	112
IA	6,586	6,790	103	6,586	6,790	103
MN	947	1,035	109	947	1,035	109
PA	4,231	4,470	106	4,231	4,470	106
Oth Sts <sup>1</sup>	16,073	16,541	103	16,073	16,541	103
US	35,422	36,926	104	35,422	36,926	104

<sup>1</sup> Not published separately to avoid disclosing data for individual operations.

**Egg-Type Chicks Hatched: By Month, United States, 2006-07**

Month	By Months			Cumulative		
	2006	2007	2007 as % of 2006	2006	2007	2007 as % of 2006
	<i>1,000</i>	<i>1,000</i>	<i>Percent</i>	<i>1,000</i>	<i>1,000</i>	<i>Percent</i>
Jan	35,422	36,926	104	35,422	36,926	104
Feb	33,665			69,087		
Mar	38,918			108,005		
Apr	34,613			142,618		
May	40,320			182,938		
Jun	37,700			220,638		
Jul	33,224			253,862		
Aug	34,892			288,754		
Sep	36,845			325,599		
Oct	36,271			361,870		
Nov	31,748			393,618		
Dec	33,430			427,048		

**Intended Placements: Egg-Type Pullet Chicks for Hatchery Supply  
Flocks by Month and Total, United States, 2006-07<sup>1</sup>**

Month	Pullet Chicks Hatched		2007 as % of 2006	Cumulative Potential Plcmts Relative to Current Supply Flocks 7-18 Months Earlier <sup>2</sup>	
	2006	2007		2006	2007
	<i>1,000</i>	<i>1,000</i>	<i>Percent</i>	<i>1,000</i>	<i>1,000</i>
Jan	188	265	141	2,837	2,842
Feb	196			2,845	2,920
Mar	286			2,788	2,912
Apr	255			2,958	2,785
May	241			2,878	2,820
Jun	183			2,833	2,846
Jul	320			2,845	2,834
Aug	253			2,876	2,911
Sep	248			2,864	
Oct	223			2,836	
Nov	206			2,783	
Dec <sup>3</sup>	235			2,834	
Total	2,845				

<sup>1</sup> Reported by leading breeders. Coverage may not be 100 percent. Includes expected pullet chicks from eggs sold during the preceding month at the rate of 125 pullet chicks per 30 dozen case of eggs.

<sup>2</sup> For January 2007, includes breeder pullet chicks hatched Jul 2005 through Jun 2006. The 7-18 months represent the first laying cycle. Molting and additional laying cycles will increase the cumulative potential placements.

<sup>3</sup> Revision to 2006 pullet chicks hatched and cumulative placements for July 2007.

**Broiler-Type Eggs in Incubators: By Region  
and United States, February 1, 2006-07**

Region	2006	2007	2007 as % of 2006
	<i>1,000</i>	<i>1,000</i>	<i>Percent</i>
North Atlantic	11,759	11,645	99
E North Central	8,898	9,665	109
W North Central	23,307	28,476	122
South Atlantic	241,995	241,874	100
South Central	351,930	332,946	95
West	23,084	24,542	106
US	660,973	649,148	98



**Broiler-Type Chicks Hatched: By State  
and United States, January 2006-07**

State	During January			Jan-Jan		
	2006	2007	2007 as % of 2006	2006	2007	2007 as % of 2006
	<i>1,000</i>	<i>1,000</i>	<i>Percent</i>	<i>1,000</i>	<i>1,000</i>	<i>Percent</i>
AL	114,204	112,842	99	114,204	112,842	99
AR	115,133	101,961	89	115,133	101,961	89
DE	15,095	14,425	96	15,095	14,425	96
FL	4,964	4,982	100	4,964	4,982	100
GA	123,833	127,943	103	123,833	127,943	103
KY	25,549	27,606	108	25,549	27,606	108
LA	14,959	13,602	91	14,959	13,602	91
MD	32,498	31,121	96	32,498	31,121	96
MS	69,102	67,149	97	69,102	67,149	97
NC	68,670	69,015	101	68,670	69,015	101
OK	23,564	23,554	100	23,564	23,554	100
PA	13,942	14,335	103	13,942	14,335	103
SC	18,570	19,829	107	18,570	19,829	107
TX	56,761	52,917	93	56,761	52,917	93
VA	23,548	23,122	98	23,548	23,122	98
CA, MO, TN, & WV	63,433	71,915	113	63,433	71,915	113
19 Sts <sup>1</sup>	783,825	776,318	99	783,825	776,318	99
Oth Sts <sup>2</sup>	20,248	20,748	102	20,248	20,748	102
US	804,073	797,066	99	804,073	797,066	99

<sup>1</sup> States in the weekly hatchery production estimating program.

<sup>2</sup> Not published separately to avoid disclosing data for individual operations.

**Broiler-Type Chicks Hatched: By Month, United States, 2006-07**

Month	By Months			Cumulative		
	2006	2007	2007 as % of 2006	2006	2007	2007 as % of 2006
	<i>1,000</i>	<i>1,000</i>	<i>Percent</i>	<i>1,000</i>	<i>1,000</i>	<i>Percent</i>
Jan	804,073	797,066	99	804,073	797,066	99
Feb	733,145			1,537,218		
Mar	817,068			2,354,286		
Apr	787,064			3,141,350		
May	810,908			3,952,258		
Jun	787,791			4,740,049		
Jul	800,132			5,540,181		
Aug	809,284			6,349,465		
Sep	771,719			7,121,184		
Oct	771,822			7,893,006		
Nov	729,460			8,622,466		
Dec	795,445			9,417,911		

**Intended Placements: Broiler-Type Pullet Chicks for Hatchery  
Supply Flocks by Month and Total, 2006-07 <sup>1</sup>**

Month	Pullet Chicks Hatched		2007 as % of 2006	Cumulative Potential Plcmts Relative to Current Supply Flocks 7-15 Months Earlier <sup>2</sup>	
	2006	2007		2006	2007
	<i>1,000</i>	<i>1,000</i>	<i>Percent</i>	<i>1,000</i>	<i>1,000</i>
US Place- ments					
Jan	6,825	7,015	103	62,860	64,544
Feb	7,593			63,060	64,056
Mar	7,012			63,416	64,389
Apr	6,593			63,776	64,340
May	7,531			64,311	64,259
Jun	7,636			64,284	64,284
Jul	6,456			64,319	64,448
Aug	7,631			64,344	64,870
Sep	7,063			64,154	
Oct	6,744			64,057	
Nov	7,618			63,993	
Dec <sup>3</sup>	7,176			64,040	
Annual Total	85,878				
Total Place- ments <sup>4</sup>					
Jan	8,018	8,772	109		
Feb	9,026				
Mar	8,415				
Apr	7,558				
May	8,930				
Jun	9,144				
Jul	7,845				
Aug	9,170				
Sep	8,742				
Oct	8,028				
Nov	9,550				
Dec <sup>5</sup>	8,700				
Annual Total	103,126				

<sup>1</sup> Reported by leading breeders. Coverage may not be 100 percent. Includes expected pullet chicks from eggs sold during the preceding month at the rate of 125 pullet chicks per 30 dozen case of eggs.

<sup>2</sup> For Jan 2007, includes breeder pullet chicks hatched Oct 2005 through Jun 2006.

<sup>3</sup> Revision to 2006 pullet chicks hatched and cumulative placements for July 2007.

<sup>4</sup> U.S. production of intended placements worldwide.

<sup>5</sup> Revision to 2006 only.

## Reliability of Chicken and Eggs Estimates

**Survey Procedures:** Primary data for the "**Chickens and Eggs**" report are from weekly and/or monthly questionnaires sent to producers. An attempt is made to collect information for layer and egg estimates from each known contractor and independent producer who has at least 30,000 table egg layers, flocks of hatchery supply layers, or pullet only operations with at least 500 pullets. Coverage for operations with less than 30,000 table egg layers are estimated each month based on data reported in December. Approximately 650 contractors, independent egg producers, and pullet only operations are contacted each month. All known hatcheries, approximately 330, are contacted for information on a weekly and/or monthly basis.

**Revision Policy:** The previous month's estimates are subject to revision if late reports or corrected data indicates a different level. Additionally, revisions after the monthly report will be made at the end of the marketing year and published in the annual reports of "**Chickens and Eggs Summary**" and "**Hatchery Production**".

**Reliability:** Operations are mailed a questionnaire and given adequate time to respond by mail. Those that do not respond are phoned. Great care is exercised to ensure that all operations are accounted for during each survey period. However, there are usually missing reports that must be accounted for in the estimates.

Sound statistical methodology is employed to derive estimates from the reported data. All data are checked for unusual values. All operations' data are compared to their own past operating profiles and also to trends from other operations. Data for missing operations are estimated based on similar operations or historical data. Survey data are subject to non-sampling errors such as omissions and mistakes in reporting and in processing. While these errors cannot be measured directly, they are minimized by reviewing all data for consistency and reasonableness.

Egg-type chicks hatched consist of all chicks of egg-type domesticated breeds including males and chicks destined for hatchery supply flocks and research purposes. The relationship of chicks hatched to chicken inventory and poultry marketings is carefully monitored. The disposition of egg-type chicks hatched prior to placement into the laying flock can vary significantly, which can make comparisons to changes in layer inventory inconsistent over time.

Intended placement data reported by leading breeders include pullet chicks expected from eggs sold the preceding month. The breeders in this report account for a large percentage of replacement pullets for hatchery supply flocks. Production of replacement pullets by these breeders indicates the number of pullets available to hatchery supply flocks several months before the pullets will actually move into the flocks. "Hatchery Supply Flocks" include all generations of layers which could lay eggs to supply a hatchery. This includes the generations of parents, grandparents, great-grandparents, pedigree, etc. Also included are research flocks, vaccine flocks, and specific pathogen-free flocks. The broiler cumulative potential placements are a moving total of the intended placements 7-15 months earlier. The egg-type cumulative potential placements of 7-18 months represent the first laying cycle. Molting and additional laying cycles will increase the cumulative potential placements of egg-type hatching flocks.

## Information Contacts

Listed below are the commodity specialists in the Livestock Branch of the National Agricultural Statistics Service to contact for additional information.

Dan Kerestes, Chief, Livestock Branch .....	(202) 720-3570
Darin Jantzi, Head, Poultry and Specialty Commodities Section .....	(202) 720-3570
Mark Aitken - Layers, Eggs .....	(202) 690-8632
David Colwell - Cold Storage .....	(202) 720-8784
Fleming Gibson - Egg Products, Poultry Slaughter, Catfish Processing, Mink, Turkey Hatchery, Turkeys Raised .....	(202) 690-3237
Sharyn Lavender - Broiler Hatchery, Chicken Hatchery, Honey .....	(202) 720-3244
Toby Paterson - Catfish Production, Trout Production, Census of Aquaculture .....	(202) 720-0585

## ACCESS TO REPORTS!!

---

For your convenience, there are several ways to obtain NASS reports, data products, and services:

### INTERNET ACCESS

All NASS reports are available free of charge on the worldwide Internet. For access, connect to the Internet and go to the NASS Home Page at: [www.nass.usda.gov](http://www.nass.usda.gov).

### E-MAIL SUBSCRIPTION

All NASS reports are available by subscription free of charge direct to your e-mail address. Starting with the NASS Home Page at [www.nass.usda.gov](http://www.nass.usda.gov), under the right navigation, *Receive reports by Email*, click on **National** or **State**. Follow the instructions on the screen.

-----

### PRINTED REPORTS OR DATA PRODUCTS

**CALL OUR TOLL-FREE ORDER DESK: 800-999-6779 (U.S. and Canada)**  
**Other areas, please call 703-605-6220      FAX: 703-605-6900**  
**(Visa, MasterCard, check, or money order acceptable for payment.)**

-----

### ASSISTANCE

For **assistance** with general agricultural statistics or further information about NASS or its products or services, contact the **Agricultural Statistics Hotline** at **800-727-9540**, 7:30 a.m. to 4:00 p.m. ET, or e-mail: [nass@nass.usda.gov](mailto:nass@nass.usda.gov).

The U.S. Department of Agriculture (USDA) prohibits discrimination in all its programs and activities on the basis of race, color, national origin, age, disability, and where applicable, sex, marital status, familial status, parental status, religion, sexual orientation, genetic information, political beliefs, reprisal, or because all or a part of an individual's income is derived from any public assistance program. (Not all prohibited bases apply to all programs.) Persons with disabilities who require alternative means for communication of program information (Braille, large print, audiotape, etc.) should contact USDA's TARGET Center at (202) 720-2600 (voice and TDD).

To file a complaint of discrimination, write to USDA, Director, Office of Civil Rights, 1400 Independence Avenue, S.W., Washington, D.C. 20250-9410, or call (800) 795-3272 (voice) or (202) 720-6382 (TDD). USDA is an equal opportunity provider and employer.