



NASS

FACT FINDERS FOR AGRICULTURE
UNITED STATES DEPARTMENT OF AGRICULTURE

Washington, D.C.

Chickens And Eggs

Released March 23, 2007, by the National Agricultural Statistics Service (NASS), Agricultural Statistics Board, U.S. Department of Agriculture. For information on "Layers and Eggs" call Mark Aitken at (202) 690-8632, for "Chicks Hatched" call Sharyn Lavender at (202) 720-3244, office hours 7:30 a.m. to 4:00 p.m. ET.

February Egg Production Down 1 Percent

U.S. egg production totaled 6.91 billion during February 2007, down 1 percent from last year. Production included 5.92 billion table eggs, and 998 million hatching eggs, of which 937 million were broiler-type and 61 million were egg-type. The total number of layers during February 2007 averaged 347 million, down 1 percent from last year. February egg production per 100 layers was 1,992 eggs, down slightly from February 2006.

All layers in the U.S. on March 1, 2007 totaled 347 million, down 1 percent from last year. The 347 million layers consisted of 288 million layers producing table or market type eggs, 56.5 million layers producing broiler-type hatching eggs, and 2.82 million layers producing egg-type hatching eggs. Rate of lay per day on March 1, 2007, averaged 71.6 eggs per 100 layers, unchanged from March 1, 2006.

Egg-Type Chicks Hatched Up 9 Percent

Egg-type chicks hatched during February 2007 totaled 36.8 million, up 9 percent from February 2006. Eggs in incubators totaled 38.5 million on March 1, 2007, up 5 percent from a year ago.

Domestic placements of egg-type pullet chicks for future hatchery supply flocks by leading breeders totaled 166,000 during February 2007, down 15 percent from February 2006.

Broiler-Type Chicks Hatched Down 1 Percent

Broiler-type chicks hatched during February 2007 totaled 724 million, down 1 percent from February 2006. Eggs in incubators totaled 664 million on March 1, 2007, down slightly from a year earlier.

Leading breeders placed 7.07 million broiler-type pullet chicks for future domestic hatchery supply flocks during February 2007, down 7 percent from February 2006.

Contents

Page

U.S. Average Number of Layers on Hand and Egg Production	1
U.S. Layers on Hand and Eggs Produced by Type, Forced Molt, and Pullets	3
Layers on Hand and Eggs Produced by State	5
Egg Production by Type and State	7
Forced Molt	9
Egg-Type Hatchery	11
Egg-Type Intended Placements	13
Broiler-Type Hatchery	13
Broiler-Type Intended Placements	15
Procedures and Reliability	16
Information Contacts	16

**All Layers: Average Number on Hand During the Month,
United States, 2005-07**

Month	2005	2006	2007
	<i>1,000 Layers</i>	<i>1,000 Layers</i>	<i>1,000 Layers</i>
Dec ¹	345,615	348,810	348,098
Jan ²	347,874	349,677	347,133
Feb	348,784	350,018	347,005
Mar	347,120	350,470	
Apr	343,927	348,643	
May	342,162	345,223	
Jun	340,200	342,685	
Jul	338,917	341,252	
Aug	339,777	341,540	
Sep	341,433	343,147	
Oct	343,381	344,538	
Nov	346,314	346,936	

¹ December preceding year.

² Revised 2007 only.

**Eggs: Production During the Month by Type,
United States, 2006-07 ¹**

Month	Total Eggs		Table Eggs		Hatching Eggs	
	2006	2007	2006	2007	2006	2007
	<i>Million Eggs</i>	<i>Million Eggs</i>	<i>Million Eggs</i>	<i>Million Eggs</i>	<i>Million Eggs</i>	<i>Million Eggs</i>
Dec ²	7,793	7,777	6,697	6,683	1,096	1,094
Jan ³	7,727	7,637	6,622	6,535	1,105	1,102
Feb	6,980	6,914	5,983	5,916	997	998
Mar	7,843		6,732		1,112	
Apr	7,543		6,468		1,075	
May	7,637		6,520		1,117	
Jun	7,401		6,336		1,066	
Jul	7,645		6,550		1,095	
Aug	7,647		6,557		1,090	
Sep	7,430		6,379		1,051	
Oct	7,678		6,600		1,078	
Nov	7,549		6,506		1,043	
During Year	90,877		77,954		12,927	

¹ Totals may not add due to rounding.

² December preceding year.

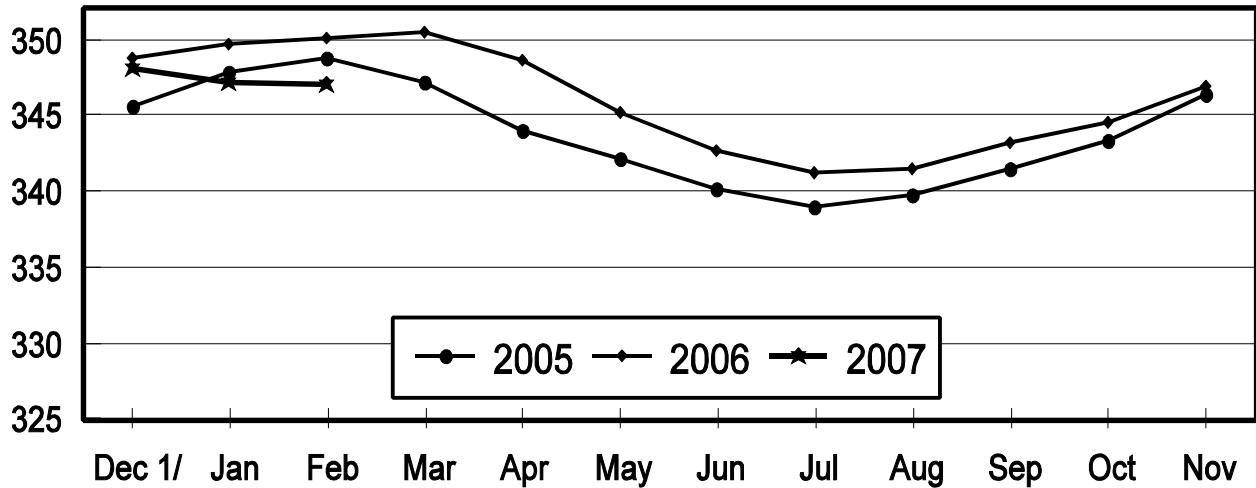
³ Revised 2007 only.

Average Number of Layers

United States, 2005 - 2007

During the Month

Million Layers



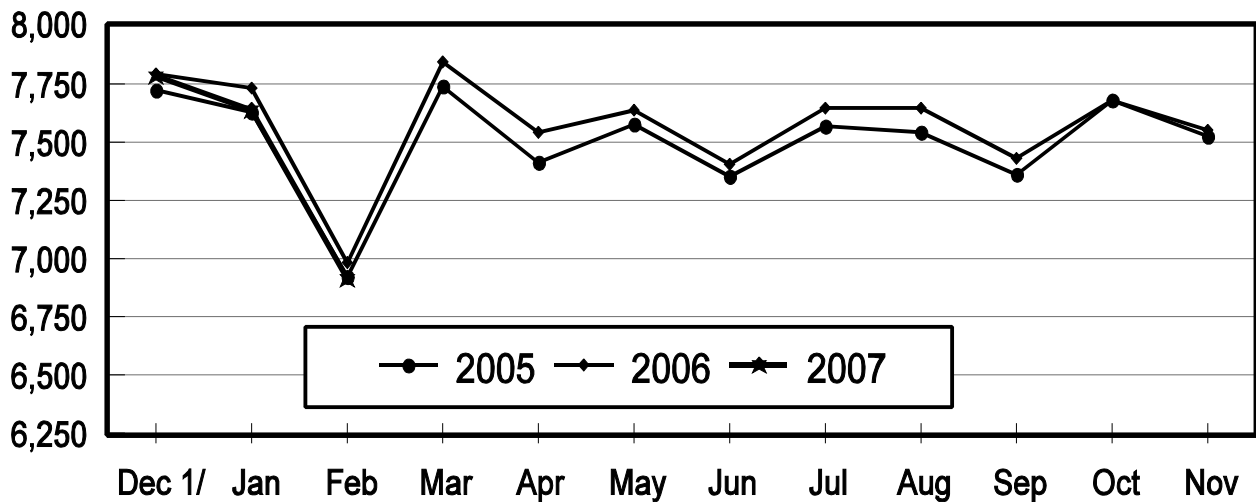
1/ Previous Year

All Egg Production

United States, 2005 - 2007

During the Month

Million Eggs



1/ Previous Year

**Layers and Eggs: Layers on Hand and Eggs Produced by Type,
and Forced Molt, United States, January-February 2006-07 ¹**

Item	Unit	2006	2007 ²	2007 as % of 2006
Layers During Jan	1,000			
All Layers		349,677	347,133	99
Table Egg Type		290,772	288,895	99
Hatching Egg Type		58,905	58,238	99
Broiler-Type Hatching		56,070	55,390	99
Egg-Type Hatching		2,835	2,848	100
Eggs per 100 Layers During Jan	Number			
All Layers		2,210	2,200	100
Table Egg Type		2,277	2,262	99
Hatching Egg Type		1,876	1,892	101
Broiler-Type Hatching		1,853	1,869	101
Egg-Type Hatching		2,328	2,353	101
Eggs Produced During Jan	Million			
All Layers		7,727	7,637	99
Table Egg Type		6,622	6,535	99
Hatching Egg Type		1,105	1,102	100
Broiler-Type Hatching		1,039	1,035	100
Egg-Type Hatching		66	67	102
Layers on Feb 1	1,000			
All Layers		349,930	346,799	99
Table Egg Type		290,972	288,304	99
Hatching Egg Type		58,958	58,495	99
Broiler-Type Hatching		56,040	55,668	99
Egg-Type Hatching		2,918	2,827	97
Eggs per 100 Layers on Feb 1	Number			
All Layers		70.8	70.7	100
Table Egg Type		72.9	72.7	100
Hatching Egg Type		60.1	60.4	100
Broiler-Type Hatching		59.4	59.5	100
Egg-Type Hatching		73.9	78.2	106
Forced Molt Layers on Feb 1	Percent			
Percent Being Molted		5.2	3.4	65
Percent with Molt Completed		23.7	24.4	103
Layers Sold for Slaughter During Jan	1,000	14,783	12,746	86
Layers Rendered, Died, Destroyed, Composted or Disappeared For Any Reason During Jan	1,000	5,949	7,473	126
Pullets on Feb 1	1,000	98,125	96,033	98
Pullets Added During Jan ³	1,000	21,486	22,601	105

¹ Totals may not add due to rounding.

² Revised.

³ Pullet chicks less than 3 days old added to pullet flocks.

**Layers and Eggs: Layers on Hand and Eggs Produced by Type,
and Forced Molt, United States, February-March 2006-07¹**

Item	Unit	2006	2007	2007 as % of 2006
Layers During Feb	1,000			
All Layers		350,018	347,005	99
Table Egg Type		290,850	288,068	99
Hatching Egg Type		59,168	58,937	100
Broiler-Type Hatching		56,254	56,109	100
Egg-Type Hatching		2,914	2,828	97
Eggs per 100 Layers During Feb	Number			
All Layers		1,994	1,992	100
Table Egg Type		2,057	2,054	100
Hatching Egg Type		1,685	1,693	100
Broiler-Type Hatching		1,662	1,670	100
Egg-Type Hatching		2,128	2,157	101
Eggs Produced During Feb	Million			
All Layers		6,980	6,914	99
Table Egg Type		5,983	5,916	99
Hatching Egg Type		997	998	100
Broiler-Type Hatching		935	937	100
Egg-Type Hatching		62	61	98
Layers on Mar 1	1,000			
All Layers		350,452	347,170	99
Table Egg Type		291,090	287,814	99
Hatching Egg Type		59,362	59,356	100
Broiler-Type Hatching		56,460	56,536	100
Egg-Type Hatching		2,902	2,820	97
Eggs per 100 Layers on Mar 1	Number			
All Layers		71.6	71.6	100
Table Egg Type		73.9	73.9	100
Hatching Egg Type		60.2	60.7	101
Broiler-Type Hatching		59.4	59.9	101
Egg-Type Hatching		76.4	76.5	100
Forced Molt Layers on Mar 1	Percent			
Percent Being Molted		4.0	2.9	73
Percent with Molt Completed		24.4	24.3	100
Layers Sold for Slaughter During Feb	1,000	13,567	13,362	98
Layers Rendered, Died, Destroyed, Composted or Disappeared For Any Reason During Feb	1,000	8,011	7,977	100
Pullets on Mar 1	1,000	97,322	96,554	99
Pullets Added During Feb ²	1,000	23,348	23,228	99

¹ Totals may not add due to rounding.

² Pullet chicks less than 3 days old added to pullet flocks.

**Layers and Eggs: Layers on Hand and Eggs Produced by State
and United States, During January 2006-07**

State	Table Egg Layers in Flocks 30,000 and Above		All Layers ¹		Eggs per 100 for All Layers ¹	
	2006	2007	2006	2007 ²	2006	2007
	<i>1,000</i>	<i>1,000</i>	<i>1,000</i>	<i>1,000</i>	<i>Number</i>	<i>Number</i>
AL	1,658	1,228	8,946	8,336	1,923	1,955
AR	4,069	4,430	14,337	14,253	1,953	1,894
CA	18,930	19,134	19,393	19,610	2,207	2,132
CO	3,296	3,244	3,818	3,776	2,462	2,331
CT	2,904	2,929	2,958	2,982	2,299	2,381
FL	11,057	10,809	11,513	11,315	2,206	2,227
GA	9,923	10,089	19,662	19,881	2,085	2,062
HI	464	391	478	403	1,841	1,811
IL	4,284	4,831	4,516	5,062	2,192	2,292
IN	23,965	23,785	24,696	24,498	2,251	2,233
IA	50,350	50,889	51,125	51,784	2,249	2,169
ME	3,963	3,931	4,034	3,997	2,305	2,077
MD	2,729	2,530	2,872	2,676	2,194	2,242
MI	7,912	8,644	8,169	8,901	2,326	2,337
MN	10,734	10,597	11,199	11,064	2,250	2,296
MS	1,622	1,600	6,835	6,579	1,946	2,006
MO	5,937	6,154	7,071	7,306	2,121	2,231
NE	11,834	11,380	11,909	11,455	2,225	2,313
NY	3,633	3,789	3,870	4,314	2,455	2,411
NC	3,442	4,025	11,075	11,688	2,023	2,053
OH	29,109	26,668	29,651	27,194	2,266	2,306
OR	2,497	2,340	2,670	2,498	2,322	2,442
PA	22,302	21,887	24,255	23,585	2,354	2,396
SC	3,856	3,633	5,012	4,762	2,294	2,163
SD	3,195	3,091	3,295	3,191	2,307	2,194
TX	14,340	14,679	18,748	19,089	2,267	2,216
VA	1,592	1,312	3,528	3,176	2,041	2,078
WA	4,811	4,838	4,880	4,904	2,172	2,325
WI	4,213	4,375	4,729	4,933	2,305	2,392
Oth Sts ³	16,369	15,834	24,433	23,921	2,186	2,157
US	284,990	283,066	349,677	347,133	2,210	2,200

¹ Includes all layers and eggs produced in both table egg and hatching egg flocks regardless of size.

² Revised.

³ Not published separately to avoid disclosing data for individual operations.

**Layers and Eggs: Layers on Hand and Eggs Produced by State
and United States, During February 2006-07**

State	Table Egg Layers in Flocks 30,000 and Above		All Layers ¹		Eggs per 100 for All Layers ¹	
	2006	2007	2006	2007	2006	2007
	<i>1,000</i>	<i>1,000</i>	<i>1,000</i>	<i>1,000</i>	<i>Number</i>	<i>Number</i>
AL	1,696	1,247	8,897	8,604	1,765	1,732
AR	4,125	4,582	14,481	14,561	1,726	1,738
CA	18,881	18,997	19,377	19,488	1,977	1,955
CO	3,245	3,326	3,731	3,825	2,198	2,196
CT	2,906	2,807	2,957	2,867	2,198	2,197
FL	10,959	10,718	11,406	11,216	2,016	2,068
GA	9,785	10,019	19,550	19,755	1,908	1,883
HI	462	384	475	395	1,663	1,620
IL	4,246	4,732	4,474	4,965	2,168	2,075
IN	24,303	23,824	25,043	24,519	2,009	2,015
IA	50,795	50,764	51,600	51,672	2,054	1,959
ME	4,026	3,955	4,095	4,017	2,076	1,917
MD	2,684	2,543	2,816	2,664	2,024	1,952
MI	8,116	8,752	8,380	9,016	2,112	2,163
MN	10,899	10,481	11,364	10,943	2,006	2,047
MS	1,610	1,674	6,839	6,672	1,740	1,784
MO	6,132	6,108	7,279	7,296	1,965	1,960
NE	11,752	11,294	11,827	11,369	2,088	2,102
NY	3,585	3,711	3,825	4,236	2,170	2,172
NC	3,402	4,071	11,073	11,902	1,797	1,815
OH	29,039	26,610	29,570	27,152	2,002	2,059
OR	2,593	2,290	2,766	2,459	2,061	2,237
PA	21,719	21,287	23,667	22,961	2,151	2,186
SC	3,893	3,595	5,075	4,807	1,990	1,914
SD	3,188	3,087	3,288	3,187	2,068	2,071
TX	14,350	14,638	18,841	19,042	2,001	2,027
VA	1,545	1,405	3,444	3,257	1,800	1,873
WA	4,667	4,877	4,735	4,944	1,985	2,104
WI	4,315	4,418	4,845	4,978	2,043	2,149
Oth Sts ²	16,151	16,044	24,298	24,236	1,955	1,964
US	285,069	282,240	350,018	347,005	1,994	1,992

¹ Includes all layers and eggs produced in both table egg and hatching egg flocks regardless of size.

² Not published separately to avoid disclosing data for individual operations.

**Egg Production: By Type, State, and United States,
January 2006-07 ¹**

State	Total Production		Table Eggs ²		Hatching Eggs ²	
	2006	2007 ³	2006	2007	2006	2007 ³
	<i>Million Eggs</i>	<i>Million Eggs</i>	<i>Million Eggs</i>	<i>Million Eggs</i>	<i>Million Eggs</i>	<i>Million Eggs</i>
AL	172	163	40	29	132	134
AR	280	270	96	96	184	174
CA	428	418				
CO	94	88				
CT	68	71				
FL	254	252	245	243	9	9
GA	410	410	225	223	185	187
HI	8.8	7.3	8.8	7.3	0	0
IL	99	116	95	112	4	4
IN	556	547	543	534	13	13
IA	1,150	1,123	1,138	1,109	12	14
ME	93	83				
MD	63	60	61	58	2	2
MI	190	208				
MN	252	254	244	246	8	8
MS	133	132	38	38	95	94
MO	150	163				
NE	265	265	265	265	0	0
NY	95	104				
NC	224	240	84	99	140	141
OH	672	627				
OR	62	61	60	59	2	2
PA	571	565	550	545	21	20
SC	115	103	95	82	20	21
SD	76	70	76	70	0	0
TX	425	423				
VA	72	66	37	31	35	35
WA	106	114				
WI	109	118				
Oth Sts ⁴	534	516	409	390	125	126
US	7,727	7,637	6,622	6,535	1,105	1,102

¹ Totals may not add due to rounding.

² Data by type of flock not shown for some States to avoid disclosing individual operations, data included in US totals.

³ Revised.

⁴ Not published separately to avoid disclosing data for individual operations.

**Egg Production: By Type, State, and United States,
February 2006-07 ¹**

State	Total Production		Table Eggs ²		Hatching Eggs ²	
	2006	2007	2006	2007	2006	2007
	<i>Million Eggs</i>	<i>Million Eggs</i>	<i>Million Eggs</i>	<i>Million Eggs</i>	<i>Million Eggs</i>	<i>Million Eggs</i>
AL	157	149	38	26	119	123
AR	250	253	86	92	164	161
CA	383	381				
CO	82	84				
CT	65	63				
FL	230	232	222	223	8	9
GA	373	372	204	205	169	167
HI	7.9	6.4	7.9	6.4	0	0
IL	97	103	94	100	3	3
IN	503	494	491	482	12	12
IA	1,060	1,012	1,048	999	12	13
ME	85	77				
MD	57	52	56	51	1	1
MI	177	195				
MN	228	224	221	217	7	7
MS	119	119	34	36	85	83
MO	143	143				
NE	247	239	247	239	0	0
NY	83	92				
NC	199	216	73	88	126	128
OH	592	559				
OR	57	55	55	53	2	2
PA	509	502	490	484	19	18
SC	101	92	84	73	17	19
SD	68	66	68	66	0	0
TX	377	386				
VA	62	61	31	30	31	31
WA	94	104				
WI	99	107				
Oth Sts ³	475	476	360	361	115	115
US	6,980	6,914	5,983	5,916	997	998

¹ Totals may not add due to rounding.

² Data by type of flock not shown for some States to avoid disclosing individual operations, data included in US totals.

³ Not published separately to avoid disclosing data for individual operations.

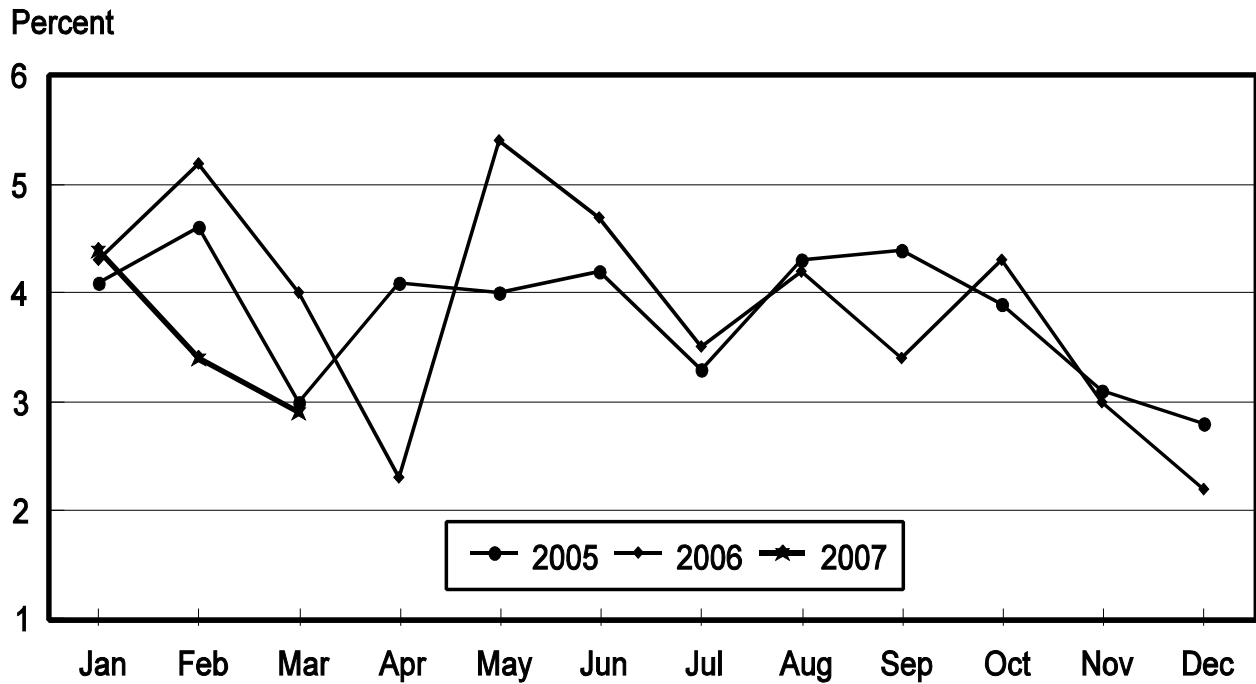
**Forced Molt: Percent of All Layers by Month,
United States, 2006-07¹**

Month	Percent Being Molted		Percent with Molt Completed	
	2006	2007	2006	2007
	<i>Percent</i>	<i>Percent</i>	<i>Percent</i>	<i>Percent</i>
Jan	4.3	4.4	23.0	24.5
Feb ²	5.2	3.4	23.7	24.4
Mar	4.0	2.9	24.4	24.3
Apr	2.3		24.9	
May	5.4		23.6	
Jun	4.7		24.7	
Jul	3.5		25.6	
Aug	4.2		25.2	
Sep	3.4		25.9	
Oct	4.3		25.8	
Nov	3.0		26.0	
Dec	2.2		26.6	

¹ As of first of month.

² Revised 2007 only.

**All Layers: Percent Being Molted
United States, 2005 - 2007
First of the Month**



**Forced Molt: Percent of All Layers by State
and United States, March 2006-07 ¹**

State	Percent Being Molted		Percent with Molt Completed	
	2006	2007	2006	2007
	<i>Percent</i>	<i>Percent</i>	<i>Percent</i>	<i>Percent</i>
AL	0.5	0.5	7.0	5.0
AR	2.0	1.5	8.0	12.0
CA	8.5	2.5	35.5	34.0
CO	0.0	0.0	27.5	19.5
CT	7.5	0.0	11.0	15.0
FL	10.0	4.5	32.0	35.0
GA	2.0	1.5	12.0	17.0
HI	7.0	3.0	54.0	64.5
IL	7.0	7.5	28.0	32.5
IN	2.0	5.5	31.5	32.0
IA	6.5	4.0	34.5	36.0
ME	0.0	0.0	0.0	0.0
MD	4.0	4.0	31.5	38.5
MI	1.0	1.0	17.0	27.0
MN	5.5	3.5	29.5	26.5
MS	2.5	0.0	10.0	12.0
MO	1.5	4.0	24.5	19.0
NE	4.5	3.5	32.5	19.0
NY	2.0	3.5	13.5	8.0
NC	1.5	1.0	8.0	8.5
OH	5.5	2.0	21.0	25.0
OR	3.5	8.5	33.5	34.0
PA	1.5	2.5	21.5	13.5
SC	5.5	1.0	26.0	30.0
SD	5.0	5.0	19.0	22.0
TX	2.0	4.5	23.0	21.0
VA	0.0	0.0	14.5	12.5
WA	8.5	2.5	46.0	36.5
WI	2.0	2.5	37.0	25.5
Oth Sts ²	3.8	2.4	24.1	25.4
US	4.0	2.9	24.4	24.3

¹ As of first of month.

² Not published separately to avoid disclosing data for individual operations.

**Hatchery Production: Eggs in Incubators, Chicks Hatched,
and Placements by Type, United States, February-March 2006-07**

Item	2006	2007	2007 as % of 2006
	<i>1,000</i>	<i>1,000</i>	<i>Percent</i>
Egg-Type			
Eggs in Incubators on Mar 1	36,514	38,468	105
Chicks Hatched During Feb	33,665	36,766	109
Chicks Hatched Jan thru Feb	69,087	73,692	107
Pullets Hatched During Feb for Intended Placements in Hatchery Supply Flocks 7-18 Months Earlier ¹	196 2,845	166 2,920	85 103
Broiler-Type			
Eggs in Incubators on Mar 1	665,624	663,815	100
Chicks Hatched During Feb	733,145	723,753	99
Chicks Hatched Jan thru Feb	1,537,218	1,520,819	99
Pullets Hatched During Feb for Intended Placements in Hatchery Supply Flocks 7-15 Months Earlier ²	7,593 63,060	7,071 64,056	93 102

¹ 2007 includes pullet chicks hatched Aug 2005 through Jul 2006.

² 2007 includes pullet chicks hatched Nov 2005 through Jul 2006.

**Egg-Type Eggs in Incubators: By Region and United States,
March 1, 2006-07**

Region	2006	2007	2007 as % of 2006
	<i>1,000</i>	<i>1,000</i>	<i>Percent</i>
North Atlantic	7,107	6,847	96
E North Central	6,291	8,078	128
W North Central	7,892	8,939	113
South Atlantic	4,527	3,957	87
South Central	5,330	4,876	91
West	5,367	5,771	108
US	36,514	38,468	105

Regions:

North Atlantic = CT, ME, MA, NH, NJ, NY, PA, RI, VT.

E North Central = IL, IN, MI, OH, WI.

W North Central = IA, KS, MN, MO, NE, ND, SD.

South Atlantic = DE, FL, GA, MD, NC, SC, VA, WV.

South Central = AL, AR, KY, LA, MS, OK, TN, TX.

West = AK, AZ, CA, CO, HI, ID, MT, NM, NV, OR, UT, WA, WY.

**Egg-Type Chicks Hatched: By State and United States,
February 2006-07**

State	During February			Jan-Feb		
	2006	2007	2007 as % of 2006	2006	2007	2007 as % of 2006
	<i>1,000</i>	<i>1,000</i>	<i>Percent</i>	<i>1,000</i>	<i>1,000</i>	<i>Percent</i>
GA	2,179	2,139	98	4,568	4,430	97
IN	4,455	5,116	115	9,651	10,915	113
IA	5,764	7,295	127	12,350	14,085	114
MN	1,000	823	82	1,947	1,858	95
PA	4,269	4,862	114	8,500	9,332	110
Oth Sts ¹	15,998	16,531	103	32,071	33,072	103
US	33,665	36,766	109	69,087	73,692	107

¹ Not published separately to avoid disclosing data for individual operations.

Egg-Type Chicks Hatched: By Month, United States, 2006-07

Month	By Months			Cumulative		
	2006	2007	2007 as % of 2006	2006	2007	2007 as % of 2006
	<i>1,000</i>	<i>1,000</i>	<i>Percent</i>	<i>1,000</i>	<i>1,000</i>	<i>Percent</i>
Jan	35,422	36,926	104	35,422	36,926	104
Feb	33,665	36,766	109	69,087	73,692	107
Mar	38,918			108,005		
Apr	34,613			142,618		
May	40,320			182,938		
Jun	37,700			220,638		
Jul	33,224			253,862		
Aug	34,892			288,754		
Sep	36,845			325,599		
Oct	36,271			361,870		
Nov	31,748			393,618		
Dec	33,430			427,048		

**Intended Placements: Egg-Type Pullet Chicks for Hatchery Supply
Flocks by Month and Total, United States, 2006-07¹**

Month	Pullet Chicks Hatched		2007 as % of 2006	Cumulative Potential Plcmts Relative to Current Supply Flocks 7-18 Months Earlier ²	
	2006	2007		2006	2007
	<i>1,000</i>	<i>1,000</i>	<i>Percent</i>	<i>1,000</i>	<i>1,000</i>
Jan	188	265	141	2,837	2,842
Feb	196	166	85	2,845	2,920
Mar	286			2,788	2,912
Apr	255			2,958	2,785
May	241			2,878	2,820
Jun	183			2,833	2,846
Jul	320			2,845	2,834
Aug	253			2,876	2,911
Sep	248			2,864	2,881
Oct	223			2,836	
Nov	206			2,783	
Dec	235			2,834	
Total	2,834				

¹ Reported by leading breeders. Coverage may not be 100 percent. Includes expected pullet chicks from eggs sold during the preceding month at the rate of 125 pullet chicks per 30 dozen case of eggs.

² For February 2007, includes breeder pullet chicks hatched Aug 2005 through Jul 2006. The 7-18 months represent the first laying cycle. Molting and additional laying cycles will increase the cumulative potential placements.

**Broiler-Type Eggs in Incubators: By Region
and United States, March 1, 2006-07**

Region	2006	2007	2007 as % of 2006
	<i>1,000</i>	<i>1,000</i>	<i>Percent</i>
North Atlantic	11,544	11,858	103
E North Central	9,116	9,721	107
W North Central	23,500	28,711	122
South Atlantic	245,223	248,207	101
South Central	351,279	340,157	97
West	24,962	25,161	101
US	665,624	663,815	100

**Broiler-Type Chicks Hatched: By State
and United States, February 2006-07**

State	During February			Jan-Feb		
	2006	2007	2007 as % of 2006	2006	2007	2007 as % of 2006
	<i>1,000</i>	<i>1,000</i>	<i>Percent</i>	<i>1,000</i>	<i>1,000</i>	<i>Percent</i>
AL	104,694	101,237	97	218,898	214,079	98
AR	104,106	92,053	88	219,239	194,014	88
DE	13,072	12,987	99	28,167	27,412	97
FL	4,583	4,587	100	9,547	9,569	100
GA	112,868	114,722	102	236,701	242,665	103
KY	23,836	25,665	108	49,385	53,271	108
LA	13,750	12,419	90	28,709	26,021	91
MD	29,064	27,770	96	61,562	58,891	96
MS	61,738	62,342	101	130,840	129,491	99
NC	61,152	61,954	101	129,822	130,969	101
OK	21,689	21,633	100	45,253	45,187	100
PA	12,976	12,581	97	26,918	26,916	100
SC	16,977	17,680	104	35,547	37,509	106
TX	51,022	47,518	93	107,783	100,435	93
VA	21,089	20,513	97	44,637	43,635	98
CA, MO, TN, & WV	59,018	64,855	110	122,451	136,770	112
19 Sts ¹	711,634	700,516	98	1,495,459	1,476,834	99
Oth Sts ²	21,511	23,237	108	41,759	43,985	105
US	733,145	723,753	99	1,537,218	1,520,819	99

¹ States in the weekly hatchery production estimating program.

² Not published separately to avoid disclosing data for individual operations.

Broiler-Type Chicks Hatched: By Month, United States, 2006-07

Month	By Months			Cumulative		
	2006	2007	2007 as % of 2006	2006	2007	2007 as % of 2006
	<i>1,000</i>	<i>1,000</i>	<i>Percent</i>	<i>1,000</i>	<i>1,000</i>	<i>Percent</i>
Jan	804,073	797,066	99	804,073	797,066	99
Feb	733,145	723,753	99	1,537,218	1,520,819	99
Mar	817,068			2,354,286		
Apr	787,064			3,141,350		
May	810,908			3,952,258		
Jun	787,791			4,740,049		
Jul	800,132			5,540,181		
Aug	809,284			6,349,465		
Sep	771,719			7,121,184		
Oct	771,822			7,893,006		
Nov	729,460			8,622,466		
Dec	795,445			9,417,911		

**Intended Placements: Broiler-Type Pullet Chicks for Hatchery
Supply Flocks by Month and Total, 2006-07 ¹**

Month	Pullet Chicks Hatched		2007 as % of 2006	Cumulative Potential Plcmts Relative to Current Supply Flocks 7-15 Months Earlier ²	
	2006	2007		2006	2007
	<i>1,000</i>	<i>1,000</i>	<i>Percent</i>	<i>1,000</i>	<i>1,000</i>
US Place- ments					
Jan	6,825	7,015	103	62,860	64,544
Feb	7,593	7,071	93	63,060	64,056
Mar	7,012			63,416	64,389
Apr	6,593			63,776	64,340
May	7,531			64,311	64,259
Jun	7,636			64,284	64,284
Jul	6,456			64,319	64,448
Aug	7,631			64,344	64,870
Sep	7,063			64,154	64,410
Oct	6,744			64,057	
Nov	7,618			63,993	
Dec	7,176			64,040	
Annual Total	85,878				
Total Place- ments ³					
Jan	8,018	8,772	109		
Feb	9,026	8,811	98		
Mar	8,415				
Apr	7,558				
May	8,930				
Jun	9,144				
Jul	7,845				
Aug	9,170				
Sep	8,742				
Oct	8,028				
Nov	9,550				
Dec	8,700				
Annual Total	103,126				

¹ Reported by leading breeders. Coverage may not be 100 percent. Includes expected pullet chicks from eggs sold during the preceding month at the rate of 125 pullet chicks per 30 dozen case of eggs.

² For Feb 2007, includes breeder pullet chicks hatched Nov 2005 through Jul 2006.

³ U.S. production of intended placements worldwide.

Reliability of Chicken and Eggs Estimates

Survey Procedures: Primary data for the "**Chickens and Eggs**" report are from weekly and/or monthly questionnaires sent to producers. An attempt is made to collect information for layer and egg estimates from each known contractor and independent producer who has at least 30,000 table egg layers, flocks of hatchery supply layers, or pullet only operations with at least 500 pullets. Coverage for operations with less than 30,000 table egg layers are estimated each month based on data reported in December. Approximately 650 contractors, independent egg producers, and pullet only operations are contacted each month. All known hatcheries, approximately 330, are contacted for information on a weekly and/or monthly basis.

Revision Policy: The previous month's estimates are subject to revision if late reports or corrected data indicates a different level. Additionally, revisions after the monthly report will be made at the end of the marketing year and published in the annual reports of "**Chickens and Eggs Summary**" and "**Hatchery Production**".

Reliability: Operations are mailed a questionnaire and given adequate time to respond by mail. Those that do not respond are phoned. Great care is exercised to ensure that all operations are accounted for during each survey period. However, there are usually missing reports that must be accounted for in the estimates.

Sound statistical methodology is employed to derive estimates from the reported data. All data are checked for unusual values. All operations' data are compared to their own past operating profiles and also to trends from other operations. Data for missing operations are estimated based on similar operations or historical data. Survey data are subject to non-sampling errors such as omissions and mistakes in reporting and in processing. While these errors cannot be measured directly, they are minimized by reviewing all data for consistency and reasonableness.

Egg-type chicks hatched consist of all chicks of egg-type domesticated breeds including males and chicks destined for hatchery supply flocks and research purposes. The relationship of chicks hatched to chicken inventory and poultry marketings is carefully monitored. The disposition of egg-type chicks hatched prior to placement into the laying flock can vary significantly, which can make comparisons to changes in layer inventory inconsistent over time.

Intended placement data reported by leading breeders include pullet chicks expected from eggs sold the preceding month. The breeders in this report account for a large percentage of replacement pullets for hatchery supply flocks. Production of replacement pullets by these breeders indicates the number of pullets available to hatchery supply flocks several months before the pullets will actually move into the flocks. "Hatchery Supply Flocks" include all generations of layers which could lay eggs to supply a hatchery. This includes the generations of parents, grandparents, great-grandparents, pedigree, etc. Also included are research flocks, vaccine flocks, and specific pathogen-free flocks. The broiler cumulative potential placements are a moving total of the intended placements 7-15 months earlier. The egg-type cumulative potential placements of 7-18 months represent the first laying cycle. Molting and additional laying cycles will increase the cumulative potential placements of egg-type hatching flocks.

Information Contacts

Listed below are the commodity specialists in the Livestock Branch of the National Agricultural Statistics Service to contact for additional information.

Dan Kerestes, Chief, Livestock Branch	(202) 720-3570
Darin Jantzi, Head, Poultry and Specialty Commodities Section	(202) 720-3570
Mark Aitken - Layers, Eggs	(202) 690-8632
David Colwell - Cold Storage	(202) 720-8784
Fleming Gibson - Egg Products, Poultry Slaughter, Catfish Processing, Mink	(202) 690-3237
Sharyn Lavender - Broiler Hatchery, Chicken Hatchery, Honey	(202) 720-3244
Toby Paterson - Catfish Production, Trout Production, Census of Aquaculture, Turkey Hatchery, Turkeys Raised	(202) 720-0585

ACCESS TO REPORTS!!

For your convenience, there are several ways to obtain NASS reports, data products, and services:

INTERNET ACCESS

All NASS reports are available free of charge on the worldwide Internet. For access, connect to the Internet and go to the NASS Home Page at: www.nass.usda.gov.

E-MAIL SUBSCRIPTION

All NASS reports are available by subscription free of charge direct to your e-mail address. Starting with the NASS Home Page at www.nass.usda.gov, under the right navigation, *Receive reports by Email*, click on **National** or **State**. Follow the instructions on the screen.

PRINTED REPORTS OR DATA PRODUCTS

CALL OUR TOLL-FREE ORDER DESK: 800-999-6779 (U.S. and Canada)
Other areas, please call 703-605-6220 FAX: 703-605-6900
(Visa, MasterCard, check, or money order acceptable for payment.)

ASSISTANCE

For **assistance** with general agricultural statistics or further information about NASS or its products or services, contact the **Agricultural Statistics Hotline** at **800-727-9540**, 7:30 a.m. to 4:00 p.m. ET, or e-mail: nass@nass.usda.gov.

The U.S. Department of Agriculture (USDA) prohibits discrimination in all its programs and activities on the basis of race, color, national origin, age, disability, and where applicable, sex, marital status, familial status, parental status, religion, sexual orientation, genetic information, political beliefs, reprisal, or because all or a part of an individual's income is derived from any public assistance program. (Not all prohibited bases apply to all programs.) Persons with disabilities who require alternative means for communication of program information (Braille, large print, audiotape, etc.) should contact USDA's TARGET Center at (202) 720-2600 (voice and TDD).

To file a complaint of discrimination, write to USDA, Director, Office of Civil Rights, 1400 Independence Avenue, S.W., Washington, D.C. 20250-9410, or call (800) 795-3272 (voice) or (202) 720-6382 (TDD). USDA is an equal opportunity provider and employer.