



NASS

FACT FINDERS FOR AGRICULTURE
UNITED STATES DEPARTMENT OF AGRICULTURE

Washington, D.C.

Chickens And Eggs

Released April 23, 2007, by the National Agricultural Statistics Service (NASS), Agricultural Statistics Board, U.S. Department of Agriculture. For information on *Chickens and Eggs* call Sharyn Lavender at (202) 720-3244, office hours 7:30 a.m. to 4:00 p.m. ET.

March Egg Production Down 1 Percent

U.S. egg production totaled 7.77 billion during March 2007, down 1 percent from last year. Production included 6.65 billion table eggs, and 1.12 billion hatching eggs, of which 1.06 billion were broiler-type and 68 million were egg-type. The total number of layers during March 2007 averaged 346 million, down 1 percent from last year. March egg production per 100 layers was 2,243 eggs, up slightly from March 2006.

All layers in the U.S. on April 1, 2007 totaled 346 million, down 1 percent from last year. The 346 million layers consisted of 286 million layers producing table or market type eggs, 56.3 million layers producing broiler-type hatching eggs, and 2.80 million layers producing egg-type hatching eggs. Rate of lay per day on April 1, 2007, averaged 73.0 eggs per 100 layers, up slightly from April 1, 2006.

Egg-Type Chicks Hatched Up 4 Percent

Egg-type chicks hatched during March 2007 totaled 40.5 million, up 4 percent from March 2006. Eggs in incubators totaled 39.5 million on April 1, 2007, up 11 percent from a year ago.

Domestic placements of egg-type pullet chicks for future hatchery supply flocks by leading breeders totaled 316,000 during March 2007, up 21 percent from March 2006.

Broiler-Type Chicks Hatched Down 1 Percent

Broiler-type chicks hatched during March 2007 totaled 811 million, down 1 percent from March 2006. Eggs in incubators totaled 667 million on April 1, 2007, up 1 percent from a year earlier.

Leading breeders placed 6.66 million broiler-type pullet chicks for future domestic hatchery supply flocks during March 2007, down 5 percent from March 2006.

Contents

Page

U.S. Average Number of Layers on Hand and Egg Production	1
U.S. Layers on Hand and Eggs Produced by Type, Forced Molt, and Pullets	3
Layers on Hand and Eggs Produced by State	5
Egg Production by Type and State	7
Forced Molt	9
Egg-Type Hatchery	11
Egg-Type Intended Placements	13
Broiler-Type Hatchery	13
Broiler-Type Intended Placements	15
Procedures and Reliability	16
Information Contacts	16

**All Layers: Average Number on Hand During the Month,
United States, 2005-07**

Month	2005	2006	2007
	<i>1,000 Layers</i>	<i>1,000 Layers</i>	<i>1,000 Layers</i>
Dec ¹	345,615	348,810	348,098
Jan	347,874	349,677	347,133
Feb ²	348,784	350,018	347,079
Mar	347,120	350,470	346,437
Apr	343,927	348,643	
May	342,162	345,223	
Jun	340,200	342,685	
Jul	338,917	341,252	
Aug	339,777	341,540	
Sep	341,433	343,147	
Oct	343,381	344,538	
Nov	346,314	346,936	

¹ December preceding year.

² Revised 2007 only.

**Eggs: Production During the Month by Type,
United States, 2006-07 ¹**

Month	Total Eggs		Table Eggs		Hatching Eggs	
	2006	2007	2006	2007	2006	2007
	<i>Million Eggs</i>	<i>Million Eggs</i>	<i>Million Eggs</i>	<i>Million Eggs</i>	<i>Million Eggs</i>	<i>Million Eggs</i>
Dec ²	7,793	7,777	6,697	6,683	1,096	1,094
Jan	7,727	7,637	6,622	6,535	1,105	1,102
Feb ³	6,980	6,916	5,983	5,918	997	998
Mar	7,843	7,769	6,732	6,646	1,112	1,123
Apr	7,543		6,468		1,075	
May	7,637		6,520		1,117	
Jun	7,401		6,336		1,066	
Jul	7,645		6,550		1,095	
Aug	7,647		6,557		1,090	
Sep	7,430		6,379		1,051	
Oct	7,678		6,600		1,078	
Nov	7,549		6,506		1,043	
During Year	90,877		77,954		12,927	

¹ Totals may not add due to rounding.

² December preceding year.

³ Revised 2007 only.

Table Egg Layers

United States, 2005 - 2007

First of the Month

Million Layers

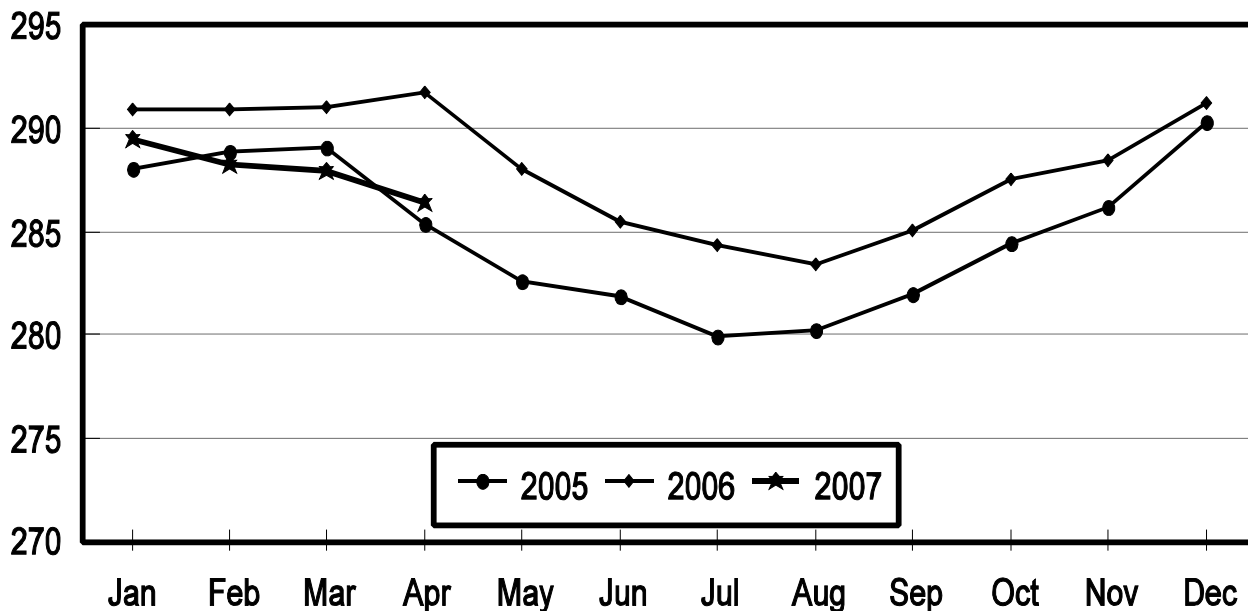
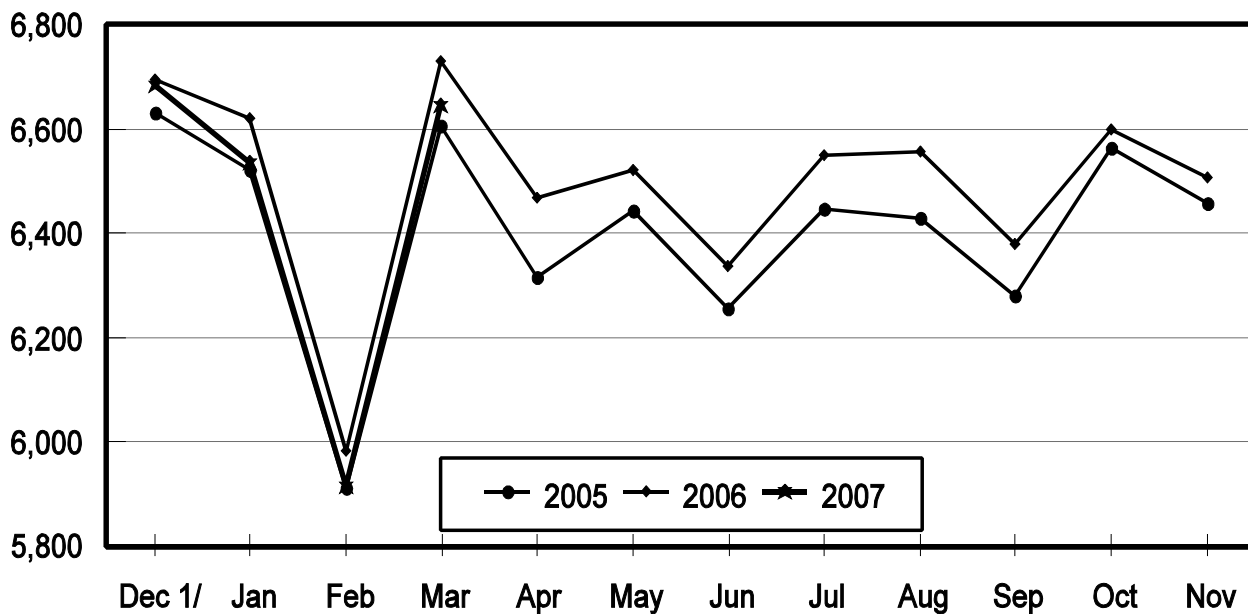


Table Egg Production

United States, 2005 - 2007

During the Month

Million Eggs



1/ Previous Year

**Layers and Eggs: Layers on Hand and Eggs Produced by Type,
and Forced Molt, United States, February-March 2006-07¹**

Item	Unit	2006	2007 ²	2007 as % of 2006
Layers During Feb	1,000			
All Layers		350,018	347,079	99
Table Egg Type		290,850	288,142	99
Hatching Egg Type		59,168	58,937	100
Broiler-Type Hatching		56,254	56,109	100
Egg-Type Hatching		2,914	2,828	97
Eggs per 100 Layers During Feb	Number			
All Layers		1,994	1,993	100
Table Egg Type		2,057	2,054	100
Hatching Egg Type		1,685	1,693	100
Broiler-Type Hatching		1,662	1,670	100
Egg-Type Hatching		2,128	2,157	101
Eggs Produced During Feb	Million			
All Layers		6,980	6,916	99
Table Egg Type		5,983	5,918	99
Hatching Egg Type		997	998	100
Broiler-Type Hatching		935	937	100
Egg-Type Hatching		62	61	98
Layers on Mar 1	1,000			
All Layers		350,452	347,317	99
Table Egg Type		291,090	287,961	99
Hatching Egg Type		59,362	59,356	100
Broiler-Type Hatching		56,460	56,536	100
Egg-Type Hatching		2,902	2,820	97
Eggs per 100 Layers on Mar 1	Number			
All Layers		71.6	71.6	100
Table Egg Type		73.9	73.9	100
Hatching Egg Type		60.2	60.7	101
Broiler-Type Hatching		59.4	59.9	101
Egg-Type Hatching		76.4	76.5	100
Forced Molt Layers on Mar 1	Percent			
Percent Being Molted		4.0	2.9	73
Percent with Molt Completed		24.4	24.1	99
Layers Sold for Slaughter During Feb	1,000	13,567	13,470	99
Layers Rendered, Died, Destroyed, Composted or Disappeared For Any Reason During Feb	1,000	8,011	7,978	100
Pullets on Mar 1	1,000	97,322	96,764	99
Pullets Added During Feb ³	1,000	23,348	22,968	98

¹ Totals may not add due to rounding.

² Revised.

³ Pullet chicks less than 3 days old added to pullet flocks.

**Layers and Eggs: Layers on Hand and Eggs Produced by Type,
and Forced Molt, United States, March-April 2006-07¹**

Item	Unit	2006	2007	2007 as % of 2006
Layers During Mar	1,000			
All Layers		350,470	346,437	99
Table Egg Type		291,440	287,195	99
Hatching Egg Type		59,030	59,242	100
Broiler-Type Hatching		56,157	56,426	100
Egg-Type Hatching		2,873	2,816	98
Eggs per 100 Layers During Mar	Number			
All Layers		2,238	2,243	100
Table Egg Type		2,310	2,314	100
Hatching Egg Type		1,884	1,896	101
Broiler-Type Hatching		1,857	1,870	101
Egg-Type Hatching		2,402	2,415	101
Eggs Produced During Mar	Million			
All Layers		7,843	7,769	99
Table Egg Type		6,732	6,646	99
Hatching Egg Type		1,112	1,123	101
Broiler-Type Hatching		1,043	1,055	101
Egg-Type Hatching		69	68	99
Layers on Apr 1	1,000			
All Layers		350,453	345,516	99
Table Egg Type		291,771	286,411	98
Hatching Egg Type		58,682	59,105	101
Broiler-Type Hatching		55,845	56,305	101
Egg-Type Hatching		2,837	2,800	99
Eggs per 100 Layers on Apr 1	Number			
All Layers		72.8	73.0	100
Table Egg Type		75.2	75.3	100
Hatching Egg Type		60.8	61.4	101
Broiler-Type Hatching		59.9	60.6	101
Egg-Type Hatching		79.1	78.8	100
Forced Molt Layers on Apr 1	Percent			
Percent Being Molted		2.3	2.8	122
Percent with Molt Completed		24.9	23.5	94
Layers Sold for Slaughter During Mar	1,000	14,100	12,332	87
Layers Rendered, Died, Destroyed, Composted or Disappeared For Any Reason During Mar	1,000	6,722	8,116	121
Pullets on Apr 1	1,000	102,225	99,226	97
Pullets Added During Mar ²	1,000	26,000	21,505	83

¹ Totals may not add due to rounding.

² Pullet chicks less than 3 days old added to pullet flocks.

**Layers and Eggs: Layers on Hand and Eggs Produced by State
and United States, During February 2006-07**

State	Table Egg Layers in Flocks 30,000 and Above		All Layers ¹		Eggs per 100 for All Layers ¹	
	2006	2007 ²	2006	2007 ²	2006	2007 ²
	<i>1,000</i>	<i>1,000</i>	<i>1,000</i>	<i>1,000</i>	<i>Number</i>	<i>Number</i>
AL	1,696	1,247	8,897	8,604	1,765	1,732
AR	4,125	4,582	14,481	14,561	1,726	1,738
CA	18,881	19,021	19,377	19,512	1,977	1,958
CO	3,245	3,326	3,731	3,825	2,198	2,196
CT	2,906	2,807	2,957	2,867	2,198	2,197
FL	10,959	10,718	11,406	11,216	2,016	2,068
GA	9,785	10,019	19,550	19,755	1,908	1,883
HI	462	384	475	395	1,663	1,620
IL	4,246	4,732	4,474	4,965	2,168	2,075
IN	24,303	23,824	25,043	24,519	2,009	2,015
IA	50,795	50,764	51,600	51,672	2,054	1,959
ME	4,026	3,955	4,095	4,017	2,076	1,917
MD	2,684	2,543	2,816	2,664	2,024	1,952
MI	8,116	8,752	8,380	9,016	2,112	2,163
MN	10,899	10,481	11,364	10,943	2,006	2,047
MS	1,610	1,674	6,839	6,672	1,740	1,784
MO	6,132	6,108	7,279	7,296	1,965	1,960
NE	11,752	11,294	11,827	11,369	2,088	2,102
NY	3,585	3,711	3,825	4,236	2,170	2,172
NC	3,402	4,071	11,073	11,902	1,797	1,815
OH	29,039	26,610	29,570	27,152	2,002	2,059
OR	2,593	2,290	2,766	2,459	2,061	2,237
PA	21,719	21,287	23,667	22,961	2,151	2,186
SC	3,893	3,595	5,075	4,807	1,990	1,914
SD	3,188	3,087	3,288	3,187	2,068	2,071
TX	14,350	14,638	18,841	19,042	2,001	2,027
VA	1,545	1,405	3,444	3,257	1,800	1,873
WA	4,667	4,877	4,735	4,944	1,985	2,104
WI	4,315	4,418	4,845	4,978	2,043	2,149
Oth Sts ³	16,151	16,094	24,298	24,286	1,955	1,964
US	285,069	282,314	350,018	347,079	1,994	1,993

¹ Includes all layers and eggs produced in both table egg and hatching egg flocks regardless of size.

² Revised.

³ Not published separately to avoid disclosing data for individual operations.

**Layers and Eggs: Layers on Hand and Eggs Produced by State
and United States, During March 2006-07**

State	Table Egg Layers in Flocks 30,000 and Above		All Layers ¹		Eggs per 100 for All Layers ¹	
	2006	2007	2006	2007	2006	2007
	<i>1,000</i>	<i>1,000</i>	<i>1,000</i>	<i>1,000</i>	<i>Number</i>	<i>Number</i>
AL	1,711	1,279	8,858	8,750	1,930	1,931
AR	4,382	4,563	14,645	14,602	1,926	2,000
CA	19,206	19,072	19,693	19,526	2,189	2,233
CO	3,164	3,245	3,633	3,750	2,450	2,480
CT	2,934	2,843	2,985	2,906	2,446	2,443
FL	10,973	10,201	11,416	10,674	2,295	2,295
GA	9,897	10,021	19,740	19,780	2,107	2,154
HI	453	376	467	388	1,863	1,778
IL	4,390	4,614	4,613	4,846	2,428	2,291
IN	24,077	23,811	24,772	24,486	2,301	2,279
IA	51,455	51,456	52,257	52,367	2,289	2,217
ME	4,000	3,963	4,075	4,021	2,282	2,189
MD	2,455	2,413	2,595	2,543	2,274	2,281
MI	8,172	8,869	8,436	9,133	2,418	2,442
MN	10,816	10,269	11,292	10,755	2,258	2,287
MS	1,646	1,687	6,638	6,631	2,004	1,991
MO	6,152	5,894	7,317	7,088	2,241	2,257
NE	11,742	11,148	11,817	11,223	2,327	2,290
NY	3,543	3,605	3,788	4,129	2,402	2,422
NC	3,350	3,992	11,081	11,877	2,003	2,054
OH	28,526	27,123	29,053	27,687	2,261	2,304
OR	2,550	2,293	2,723	2,471	2,350	2,428
PA	21,908	21,038	23,818	22,679	2,381	2,416
SC	3,880	3,611	5,096	4,920	2,119	2,093
SD	3,184	3,067	3,284	3,167	2,284	2,305
TX	14,673	14,484	19,247	18,895	2,265	2,297
VA	1,486	1,393	3,389	3,256	2,095	2,181
WA	4,747	4,697	4,815	4,764	2,305	2,330
WI	4,280	4,471	4,822	5,038	2,343	2,322
Oth Sts ²	15,906	15,868	24,105	24,085	2,215	2,230
US	285,658	281,366	350,470	346,437	2,238	2,243

¹ Includes all layers and eggs produced in both table egg and hatching egg flocks regardless of size.

² Not published separately to avoid disclosing data for individual operations.

**Egg Production: By Type, State, and United States,
February 2006-07 ¹**

State	Total Production		Table Eggs ²		Hatching Eggs ²	
	2006	2007 ³	2006	2007 ³	2006	2007
	<i>Million Eggs</i>	<i>Million Eggs</i>	<i>Million Eggs</i>	<i>Million Eggs</i>	<i>Million Eggs</i>	<i>Million Eggs</i>
AL	157	149	38	26	119	123
AR	250	253	86	92	164	161
CA	383	382				
CO	82	84				
CT	65	63				
FL	230	232	222	223	8	9
GA	373	372	204	205	169	167
HI	7.9	6.4	7.9	6.4	0	0
IL	97	103	94	100	3	3
IN	503	494	491	482	12	12
IA	1,060	1,012	1,048	999	12	13
ME	85	77				
MD	57	52	56	51	1	
MI	177	195				
MN	228	224	221	217	7	7
MS	119	119	34	36	85	83
MO	143	143				
NE	247	239	247	239	0	0
NY	83	92				
NC	199	216	73	88	126	128
OH	592	559				
OR	57	55	55	53	2	2
PA	509	502	490	484	19	18
SC	101	92	84	73	17	19
SD	68	66	68	66	0	0
TX	377	386				
VA	62	61	31	30	31	31
WA	94	104				
WI	99	107				
Oth Sts ⁴	475	477	360	362	115	115
US	6,980	6,916	5,983	5,918	997	998

¹ Totals may not add due to rounding.

² Data by type of flock not shown for some States to avoid disclosing individual operations, data included in US totals.

³ Revised.

⁴ Not published separately to avoid disclosing data for individual operations.

**Egg Production: By Type, State, and United States,
March 2006-07 ¹**

State	Total Production		Table Eggs ²		Hatching Eggs ²	
	2006	2007	2006	2007	2006	2007
	<i>Million Eggs</i>	<i>Million Eggs</i>	<i>Million Eggs</i>	<i>Million Eggs</i>	<i>Million Eggs</i>	<i>Million Eggs</i>
AL	171	169	40	29	131	140
AR	282	292	103	111	179	181
CA	431	436				
CO	89	93				
CT	73	71				
FL	262	245	253	235	9	10
GA	416	426	229	239	187	187
HI	8.7	6.9	8.7	6.9	0	0
IL	112	111	108	107	4	4
IN	570	558	557	545	13	13
IA	1,196	1,161	1,182	1,146	14	15
ME	93	88				
MD	59	58	58	57	1	
MI	204	223				
MN	255	246	247	237	8	9
MS	133	132	40	41	93	91
MO	164	160				
NE	275	257	275	257	0	0
NY	91	100				
NC	222	244	82	100	140	144
OH	657	638				
OR	64	60	62	58	2	2
PA	567	548	546	529	21	19
SC	108	103	89	80	19	23
SD	75	73	75	73	0	0
TX	436	434				
VA	71	71	35	37	36	34
WA	111	111				
WI	113	117				
Oth Sts ³	534	537	403	406	131	131
US	7,843	7,769	6,732	6,646	1,112	1,123

¹ Totals may not add due to rounding.

² Data by type of flock not shown for some States to avoid disclosing individual operations, data included in US totals.

³ Not published separately to avoid disclosing data for individual operations.

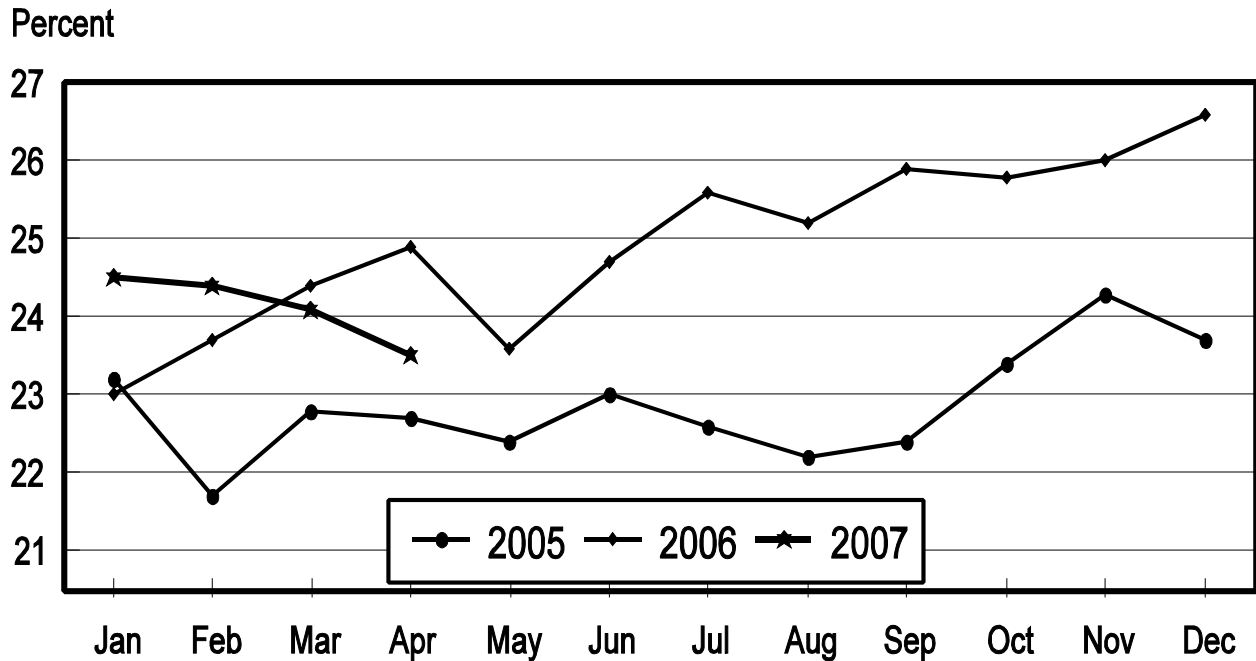
**Forced Molt: Percent of All Layers by Month,
United States, 2006-07¹**

Month	Percent Being Molted		Percent with Molt Completed	
	2006	2007	2006	2007
	<i>Percent</i>	<i>Percent</i>	<i>Percent</i>	<i>Percent</i>
Jan	4.3	4.4	23.0	24.5
Feb	5.2	3.4	23.7	24.4
Mar ²	4.0	2.9	24.4	24.1
Apr	2.3	2.8	24.9	23.5
May	5.4		23.6	
Jun	4.7		24.7	
Jul	3.5		25.6	
Aug	4.2		25.2	
Sep	3.4		25.9	
Oct	4.3		25.8	
Nov	3.0		26.0	
Dec	2.2		26.6	

¹ As of first of month.

² Revised 2007 only.

All Layers: Percent Molt Completed United States, 2005 - 2007 First of the Month



**Forced Molt: Percent of All Layers by State
and United States, April 2006-07¹**

State	Percent Being Molted		Percent with Molt Completed	
	2006	2007	2006	2007
	<i>Percent</i>	<i>Percent</i>	<i>Percent</i>	<i>Percent</i>
AL	1.0	0.5	7.0	5.5
AR	0.0	1.5	9.5	13.0
CA	5.0	1.0	36.0	32.5
CO	2.5	3.0	28.0	19.5
CT	0.0	0.0	18.5	11.0
FL	4.0	7.0	37.5	29.5
GA	0.5	1.0	12.5	16.5
HI	7.5	10.0	51.0	57.5
IL	2.0	4.5	25.5	28.0
IN	1.0	3.5	30.5	33.5
IA	1.5	3.0	37.0	36.5
ME	0.0	0.0	0.0	0.0
MD	4.5	3.5	29.5	30.5
MI	1.0	1.0	16.0	21.0
MN	4.0	4.0	31.0	23.5
MS	1.0	2.0	11.5	10.5
MO	0.0	1.0	24.0	16.0
NE	7.0	5.0	28.5	19.0
NY	1.5	3.5	10.5	5.0
NC	1.0	0.0	9.0	8.0
OH	1.5	2.5	23.5	25.0
OR	10.0	7.5	31.5	34.0
PA	3.5	3.0	18.5	11.0
SC	3.0	1.0	26.5	23.5
SD	5.0	5.0	19.0	21.0
TX	1.5	2.0	22.5	22.5
VA	0.0	0.0	14.0	12.5
WA	5.0	6.5	47.0	39.0
WI	4.0	10.5	38.0	26.5
Oth Sts ²	3.0	3.9	23.5	24.7
US	2.3	2.8	24.9	23.5

¹ As of first of month.

² Not published separately to avoid disclosing data for individual operations.

**Hatchery Production: Eggs in Incubators, Chicks Hatched,
and Placements by Type, United States, March-April 2006-07**

Item	2006	2007	2007 as % of 2006
	<i>1,000</i>	<i>1,000</i>	<i>Percent</i>
Egg-Type			
Eggs in Incubators on Apr 1	35,672	39,493	111
Chicks Hatched During Mar	38,805	40,537	104
Chicks Hatched Jan thru Mar	107,373	114,229	106
Pullets Hatched During Mar for Intended Placements in Hatchery Supply Flocks 7-18 Months Earlier ¹	261 2,795	316 2,970	121 106
Broiler-Type			
Eggs in Incubators on Apr 1	660,060	666,950	101
Chicks Hatched During Mar	817,842	810,732	99
Chicks Hatched Jan thru Mar	2,356,068	2,331,551	99
Pullets Hatched During Mar for Intended Placements in Hatchery Supply Flocks 7-15 Months Earlier ²	7,012 63,416	6,660 64,389	95 102

¹ 2007 includes pullet chicks hatched Sep 2005 through Aug 2006.

² 2007 includes pullet chicks hatched Dec 2005 through Aug 2006.

**Egg-Type Eggs in Incubators: By Region and United States,
April 1, 2006-07**

Region	2006	2007	2007 as % of 2006
	<i>1,000</i>	<i>1,000</i>	<i>Percent</i>
North Atlantic	5,306	6,613	125
E North Central	6,972	8,473	122
W North Central	7,880	8,312	105
South Atlantic	4,602	4,323	94
South Central	6,061	5,931	98
West	4,851	5,841	120
US	35,672	39,493	111

Regions:

North Atlantic = CT, ME, MA, NH, NJ, NY, PA, RI, VT.

E North Central = IL, IN, MI, OH, WI.

W North Central = IA, KS, MN, MO, NE, ND, SD.

South Atlantic = DE, FL, GA, MD, NC, SC, VA, WV.

South Central = AL, AR, KY, LA, MS, OK, TN, TX.

West = AK, AZ, CA, CO, HI, ID, MT, NM, NV, OR, UT, WA, WY.

**Egg-Type Chicks Hatched: By State and United States,
March 2006-07**

State	During March			Jan-Mar		
	2006	2007	2007 as % of 2006	2006	2007	2007 as % of 2006
	<i>1,000</i>	<i>1,000</i>	<i>Percent</i>	<i>1,000</i>	<i>1,000</i>	<i>Percent</i>
GA	2,393	2,356	98	6,961	6,786	97
IN	5,465	5,408	99	15,116	16,323	108
IA	7,320	7,817	107	19,705	21,902	111
MN	1,105	836	76	3,052	2,694	88
PA	5,019	5,532	110	13,519	14,864	110
Oth Sts ¹	17,503	18,588	106	49,020	51,660	105
US	38,805	40,537	104	107,373	114,229	106

¹ Not published separately to avoid disclosing data for individual operations.

Egg-Type Chicks Hatched: By Month, United States, 2006-07

Month	By Months			Cumulative		
	2006	2007	2007 as % of 2006	2006	2007	2007 as % of 2006
	<i>1,000</i>	<i>1,000</i>	<i>Percent</i>	<i>1,000</i>	<i>1,000</i>	<i>Percent</i>
Jan	35,159	36,926	105	35,159	36,926	105
Feb	33,409	36,766	110	68,568	73,692	107
Mar	38,805	40,537	104	107,373	114,229	106
Apr	35,435			142,808		
May	39,744			182,552		
Jun	37,406			219,958		
Jul	32,727			252,685		
Aug	35,611			288,296		
Sep	36,873			325,169		
Oct	36,162			361,331		
Nov	31,554			392,885		
Dec	33,183			426,068		

**Intended Placements: Egg-Type Pullet Chicks for Hatchery Supply
Flocks by Month and Total, United States, 2006-07¹**

Month	Pullet Chicks Hatched		2007 as % of 2006	Cumulative Potential Plcmts Relative to Current Supply Flocks 7-18 Months Earlier ²	
	2006	2007		2006	2007
	<i>1,000</i>	<i>1,000</i>	<i>Percent</i>	<i>1,000</i>	<i>1,000</i>
Jan	223	265	119	2,844	2,870
Feb	200	166	83	2,852	2,947
Mar	261	316	121	2,795	2,970
Apr	254			2,951	2,855
May	241			2,871	2,889
Jun	198			2,823	2,915
Jul	319			2,835	2,873
Aug	284			2,902	2,915
Sep	260			2,899	2,881
Oct	222			2,850	2,936
Nov	206			2,796	
Dec	205			2,847	
Total	2,873				

¹ Reported by leading breeders. Coverage may not be 100 percent. Includes expected pullet chicks from eggs sold during the preceding month at the rate of 125 pullet chicks per 30 dozen case of eggs.

² For March 2007, includes breeder pullet chicks hatched Sep 2005 through Aug 2006. The 7-18 months represent the first laying cycle. Molting and additional laying cycles will increase the cumulative potential placements.

**Broiler-Type Eggs in Incubators: By Region
and United States, April 1, 2006-07**

Region	2006	2007	2007 as % of 2006
	<i>1,000</i>	<i>1,000</i>	<i>Percent</i>
North Atlantic	12,224	11,647	95
E North Central	9,572	9,681	101
W North Central	30,686	29,294	95
South Atlantic	242,071	248,581	103
South Central	339,292	341,559	101
West	26,215	26,188	100
US	660,060	666,950	101

**Broiler-Type Chicks Hatched: By State
and United States, March 2006-07**

State	During March			Jan-Mar		
	2006	2007	2007 as % of 2006	2006	2007	2007 as % of 2006
	<i>1,000</i>	<i>1,000</i>	<i>Percent</i>	<i>1,000</i>	<i>1,000</i>	<i>Percent</i>
AL	117,446	113,341	97	336,363	327,420	97
AR	106,842	102,806	96	313,021	296,820	95
DE	14,388	14,732	102	42,555	42,144	99
FL	5,052	5,006	99	14,599	14,575	100
GA	126,415	128,847	102	363,116	371,512	102
KY	25,223	27,469	109	74,608	80,740	108
LA	15,236	14,310	94	43,945	40,331	92
MD	31,883	31,705	99	93,445	90,596	97
MS	68,568	70,717	103	199,408	200,208	100
NC	70,944	71,172	100	200,766	202,141	101
OK	23,915	24,209	101	69,168	69,396	100
PA	14,202	14,127	99	41,120	41,043	100
SC	19,578	19,720	101	55,125	57,229	104
TX	56,907	54,608	96	164,690	155,043	94
VA	23,997	22,726	95	68,634	66,361	97
CA, MO, TN, & WV	74,390	73,764	99	209,476	210,534	101
19 Sts ¹	794,986	789,259	99	2,290,039	2,266,093	99
Oth Sts ²	22,856	21,473	94	66,029	65,458	99
US	817,842	810,732	99	2,356,068	2,331,551	99

¹ States in the weekly hatchery production estimating program.

² Not published separately to avoid disclosing data for individual operations.

Broiler-Type Chicks Hatched: By Month, United States, 2006-07

Month	By Months			Cumulative		
	2006	2007	2007 as % of 2006	2006	2007	2007 as % of 2006
	<i>1,000</i>	<i>1,000</i>	<i>Percent</i>	<i>1,000</i>	<i>1,000</i>	<i>Percent</i>
Jan	804,801	797,066	99	804,801	797,066	99
Feb	733,425	723,753	99	1,538,226	1,520,819	99
Mar	817,842	810,732	99	2,356,068	2,331,551	99
Apr	787,457			3,143,525		
May	812,137			3,955,662		
Jun	788,652			4,744,314		
Jul	801,537			5,545,851		
Aug	810,030			6,355,881		
Sep	772,258			7,128,139		
Oct	772,942			7,901,081		
Nov	729,946			8,631,027		
Dec	796,523			9,427,550		

**Intended Placements: Broiler-Type Pullet Chicks for Hatchery
Supply Flocks by Month and Total, 2006-07 ¹**

Month	Pullet Chicks Hatched		2007 as % of 2006	Cumulative Potential Plcmts Relative to Current Supply Flocks 7-15 Months Earlier ²	
	2006	2007		2006	2007
	<i>1,000</i>	<i>1,000</i>	<i>Percent</i>	<i>1,000</i>	<i>1,000</i>
US Place- ments					
Jan	6,825	7,015	103	62,860	64,544
Feb	7,593	7,071	93	63,060	64,056
Mar	7,012	6,660	95	63,416	64,389
Apr	6,593			63,776	64,340
May	7,531			64,311	64,259
Jun	7,636			64,284	64,284
Jul	6,456			64,319	64,448
Aug	7,631			64,344	64,870
Sep	7,063			64,154	64,410
Oct	6,744			64,057	63,434
Nov	7,618			63,993	
Dec	7,176			64,040	
Annual Total	85,878				
Total Place- ments ³					
Jan	8,018	8,772	109		
Feb	9,026	8,811	98		
Mar	8,415	8,510	101		
Apr	7,558				
May	8,930				
Jun	9,144				
Jul	7,845				
Aug	9,170				
Sep	8,742				
Oct	8,028				
Nov	9,550				
Dec	8,700				
Annual Total	103,126				

¹ Reported by leading breeders. Coverage may not be 100 percent. Includes expected pullet chicks from eggs sold during the preceding month at the rate of 125 pullet chicks per 30 dozen case of eggs.

² For Mar 2007, includes breeder pullet chicks hatched Dec 2005 through Aug 2006.

³ U.S. production of intended placements worldwide.

Reliability of Chicken and Eggs Estimates

Survey Procedures: Primary data for the "Chickens and Eggs" report are from weekly and/or monthly questionnaires sent to producers. An attempt is made to collect information for layer and egg estimates from each known contractor and independent producer who has at least 30,000 table egg layers, flocks of hatchery supply layers, or pullet only operations with at least 500 pullets. Coverage for operations with less than 30,000 table egg layers are estimated each month based on data reported in December. Approximately 650 contractors, independent egg producers, and pullet only operations are contacted each month. All known hatcheries, approximately 300, are contacted for information on a weekly and/or monthly basis.

Estimating Procedures: Sound statistical methodology is employed to derive estimates from the reported data. All data are checked for unusual values. Data from each operation are compared to their own past operating profile and to trends from similar operations. Data for missing operations are estimated based on similar operations or historical data. NASS field offices prepare these estimates by using a combination of survey indications and historic trends. Individual State estimates are reviewed by the Agricultural Statistics Board for reasonableness. Individual hatchery data are summed to State, regional, and U.S. totals.

For chicken hatcheries, chicks hatched consist of all chicks of domesticated breeds including males and chicks destined for hatchery supply flocks and research purposes. Eggs set are eggs in incubators for the purpose of hatching. The relationship of egg-type chicks hatched to chicken inventory and poultry marketings are carefully monitored. The disposition of egg-type chicks hatched prior to placement into the laying flock can vary significantly, which can make comparisons to changes in layer inventory inconsistent over time. Broiler chicks placed are specifically placed on feed for meat production. Intended placement data reported by leading breeders include pullet chicks expected from eggs sold the preceding month. The breeders in this report account for a large percentage of replacement pullets for hatchery supply flocks. Production of replacement pullets by these breeders indicates the number of pullets available to hatchery supply flocks several months before the pullets will actually move into the flocks. "Hatchery Supply Flocks" include all generations of layers which could lay eggs to supply a hatchery. This includes the generations of parents, grandparents, great-grandparents, pedigree, etc. Also included are research flocks, vaccine flocks, and specific pathogen-free flocks. The broiler cumulative potential placements are a moving total of the intended placements 7-15 months earlier. The egg-type cumulative potential placements of 7-18 months represent the first laying cycle. Molting and additional laying cycles will increase the cumulative potential placements of egg-type hatching flocks.

Revision Policy: The previous month's estimates are subject to revision if late reports or corrected data indicates a different level. Additionally, revisions after the monthly report will be made at the end of the marketing year and published in the annual reports of "Chickens and Eggs Summary" and "Hatchery Production".

Reliability: Estimates are based on a census of all known contractors and independent producers who have at least 30,000 table egg layers, flocks of hatchery supply layers, pullet only operations with at least 500 pullets, or operating hatcheries and therefore, have no sampling error. However, estimates are subject to errors such as omission, duplication, and mistakes in reporting, recording, and processing the data. While these errors cannot be measured directly, they are minimized through strict quality controls in the data collection process and a careful review of all reported data for consistency and reasonableness.

Information Contacts

Listed below are the commodity specialists in the Livestock Branch of the National Agricultural Statistics Service to contact for additional information.

Dan Kerestes, Chief, Livestock Branch	(202) 720-3570
Darin Jantzi, Head, Poultry and Specialty Commodities Section	(202) 720-3570
David Colwell - Cold Storage	(202) 720-8784
Fleming Gibson - Egg Products, Poultry Slaughter, Catfish Processing, Mink	(202) 690-3237
Darin Jantzi - Layers, Eggs	(202) 720-3570
Sharyn Lavender - Broiler Hatchery, Chicken Hatchery, Honey	(202) 720-3244
Toby Paterson - Catfish Production, Trout Production, Census of Aquaculture, Turkey Hatchery, Turkeys Raised	(202) 720-0585

ACCESS TO REPORTS!!

For your convenience, there are several ways to obtain NASS reports, data products, and services:

INTERNET ACCESS

All NASS reports are available free of charge on the worldwide Internet. For access, connect to the Internet and go to the NASS Home Page at: www.nass.usda.gov.

E-MAIL SUBSCRIPTION

All NASS reports are available by subscription free of charge direct to your e-mail address. Starting with the NASS Home Page at www.nass.usda.gov, under the right navigation, *Receive reports by Email*, click on **National** or **State**. Follow the instructions on the screen.

PRINTED REPORTS OR DATA PRODUCTS

CALL OUR TOLL-FREE ORDER DESK: 800-999-6779 (U.S. and Canada)
Other areas, please call 703-605-6220 FAX: 703-605-6900
(Visa, MasterCard, check, or money order acceptable for payment.)

ASSISTANCE

For **assistance** with general agricultural statistics or further information about NASS or its products or services, contact the **Agricultural Statistics Hotline** at **800-727-9540**, 7:30 a.m. to 4:00 p.m. ET, or e-mail: nass@nass.usda.gov.

The U.S. Department of Agriculture (USDA) prohibits discrimination in all its programs and activities on the basis of race, color, national origin, age, disability, and where applicable, sex, marital status, familial status, parental status, religion, sexual orientation, genetic information, political beliefs, reprisal, or because all or a part of an individual's income is derived from any public assistance program. (Not all prohibited bases apply to all programs.) Persons with disabilities who require alternative means for communication of program information (Braille, large print, audiotape, etc.) should contact USDA's TARGET Center at (202) 720-2600 (voice and TDD).

To file a complaint of discrimination, write to USDA, Director, Office of Civil Rights, 1400 Independence Avenue, S.W., Washington, D.C. 20250-9410, or call (800) 795-3272 (voice) or (202) 720-6382 (TDD). USDA is an equal opportunity provider and employer.