



NASS

FACT FINDERS FOR AGRICULTURE
UNITED STATES DEPARTMENT OF AGRICULTURE

Washington, D.C.

Chickens And Eggs

Released June 22, 2007, by the National Agricultural Statistics Service (NASS), Agricultural Statistics Board, U.S. Department of Agriculture. For information on *Chickens and Eggs* call Sharyn Lavender at (202) 720-3244, office hours 7:30 a.m. to 4:00 p.m. ET.

May Egg Production Down 1 Percent

U.S. egg production totaled 7.58 billion during May 2007, down 1 percent from last year. Production included 6.45 billion table eggs, and 1.14 billion hatching eggs, of which 1.07 billion were broiler-type and 68 million were egg-type. The total number of layers during May 2007 averaged 341 million, down 1 percent from last year. May egg production per 100 layers was 2,226 eggs, up 1 percent from May 2006.

All layers in the U.S. on June 1, 2007 totaled 339 million, down 1 percent from last year. The 339 million layers consisted of 280 million layers producing table or market type eggs, 56.5 million layers producing broiler-type hatching eggs, and 2.82 million layers producing egg-type hatching eggs. Rate of lay per day on June 1, 2007, averaged 72.4 eggs per 100 layers, up 2 percent from June 1, 2006.

Egg-Type Chicks Hatched Down 3 Percent

Egg-type chicks hatched during May 2007 totaled 38.5 million, down 3 percent from May 2006. Eggs in incubators totaled 40.0 million on June 1, 2007, up 10 percent from a year ago.

Domestic placements of egg-type pullet chicks for future hatchery supply flocks by leading breeders totaled 192,000 during May 2007, down 20 percent from May 2006.

Broiler-Type Chicks Hatched Up 3 Percent

Broiler-type chicks hatched during May 2007 totaled 837 million, up 3 percent from May 2006. Eggs in incubators totaled 681 million on June 1, 2007, up 3 percent from a year earlier.

Leading breeders placed 7.75 million broiler-type pullet chicks for future domestic hatchery supply flocks during May 2007, up 3 percent from May 2006.

Contents

Page

U.S. Average Number of Layers on Hand and Egg Production	1
U.S. Layers on Hand and Eggs Produced by Type, Forced Molt, and Pullets	3
Layers on Hand and Eggs Produced by State	5
Egg Production by Type and State	7
Forced Molt	9
Egg-Type Hatchery	11
Egg-Type Intended Placements	13
Broiler-Type Hatchery	13
Broiler-Type Intended Placements	15
Procedures and Reliability	16
Information Contacts	16

**All Layers: Average Number on Hand During the Month,
United States, 2005-07**

Month	2005	2006	2007
	<i>1,000 Layers</i>	<i>1,000 Layers</i>	<i>1,000 Layers</i>
Dec ¹	345,615	348,810	348,098
Jan	347,874	349,677	347,133
Feb	348,784	350,018	347,079
Mar	347,120	350,470	346,437
Apr ²	343,927	348,643	343,814
May	342,162	345,223	340,705
Jun	340,200	342,685	
Jul	338,917	341,252	
Aug	339,777	341,540	
Sep	341,433	343,147	
Oct	343,381	344,538	
Nov	346,314	346,936	

¹ December preceding year.

² Revised 2007 only.

**Eggs: Production During the Month by Type,
United States, 2006-07 ¹**

Month	Total Eggs		Table Eggs		Hatching Eggs	
	2006	2007	2006	2007	2006	2007
	<i>Million Eggs</i>	<i>Million Eggs</i>	<i>Million Eggs</i>	<i>Million Eggs</i>	<i>Million Eggs</i>	<i>Million Eggs</i>
Dec ²	7,793	7,777	6,697	6,683	1,096	1,094
Jan	7,727	7,637	6,622	6,535	1,105	1,102
Feb	6,980	6,916	5,983	5,918	997	998
Mar	7,843	7,769	6,732	6,646	1,112	1,123
Apr ³	7,543	7,435	6,468	6,341	1,075	1,094
May	7,637	7,584	6,520	6,449	1,117	1,136
Jun	7,401		6,336		1,066	
Jul	7,645		6,550		1,095	
Aug	7,647		6,557		1,090	
Sep	7,430		6,379		1,051	
Oct	7,678		6,600		1,078	
Nov	7,549		6,506		1,043	
During Year	90,877		77,954		12,927	

¹ Totals may not add due to rounding.

² December preceding year.

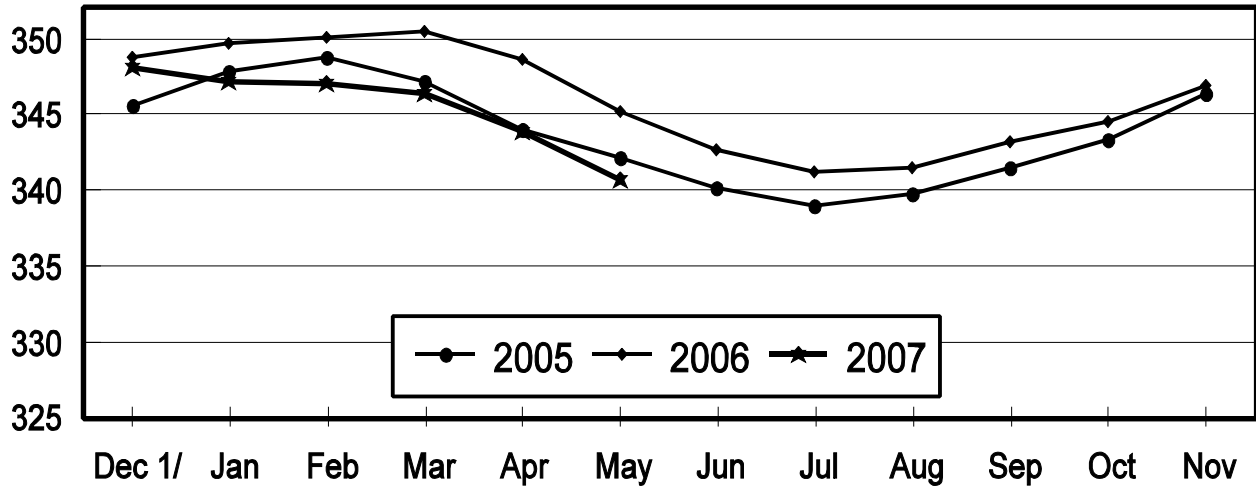
³ Revised 2007 only.

Average Number of Layers

United States, 2005 - 2007

During the Month

Million Layers



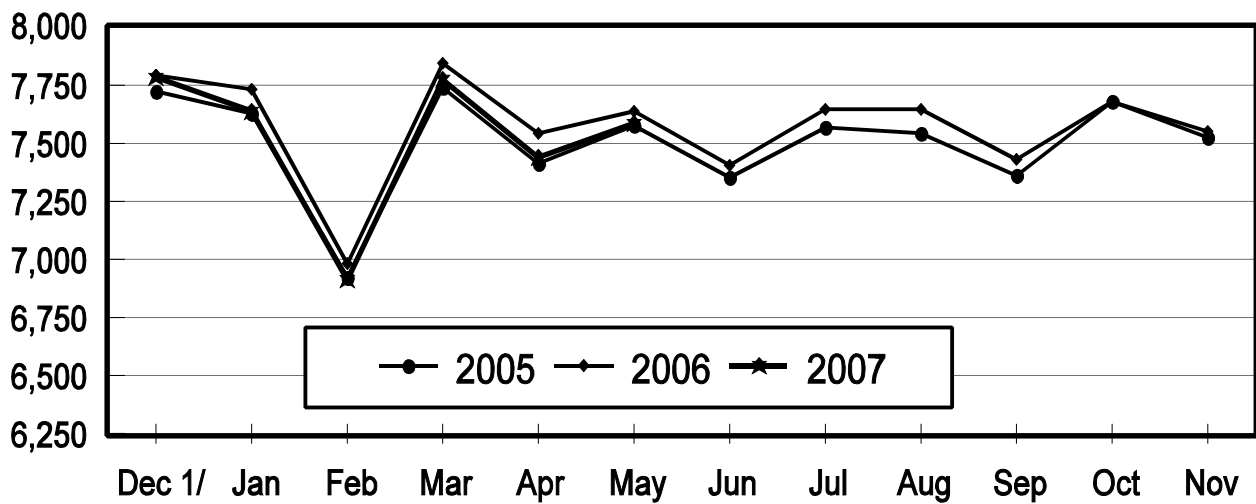
1/ Previous Year

All Egg Production

United States, 2005 - 2007

During the Month

Million Eggs



1/ Previous Year

**Layers and Eggs: Layers on Hand and Eggs Produced by Type,
and Forced Molt, United States, April-May 2006-07 ¹**

Item	Unit	2006	2007 ²	2007 as % of 2006
Layers During Apr	1,000			
All Layers		348,643	343,814	99
Table Egg Type		289,942	284,565	98
Hatching Egg Type		58,701	59,249	101
Broiler-Type Hatching		55,851	56,410	101
Egg-Type Hatching		2,850	2,839	100
Eggs per 100 Layers During Apr	Number			
All Layers		2,164	2,163	100
Table Egg Type		2,231	2,228	100
Hatching Egg Type		1,831	1,846	101
Broiler-Type Hatching		1,803	1,822	101
Egg-Type Hatching		2,386	2,325	97
Eggs Produced During Apr	Million			
All Layers		7,543	7,435	99
Table Egg Type		6,468	6,341	98
Hatching Egg Type		1,075	1,094	102
Broiler-Type Hatching		1,007	1,028	102
Egg-Type Hatching		68	66	97
Layers on May 1	1,000			
All Layers		346,809	342,071	99
Table Egg Type		288,092	282,697	98
Hatching Egg Type		58,717	59,374	101
Broiler-Type Hatching		55,860	56,503	101
Egg-Type Hatching		2,857	2,871	100
Eggs per 100 Layers on May 1	Number			
All Layers		71.4	71.1	100
Table Egg Type		73.5	73.1	99
Hatching Egg Type		61.5	61.5	100
Broiler-Type Hatching		60.6	60.7	100
Egg-Type Hatching		79.2	77.2	97
Forced Molt Layers on May 1	Percent			
Percent Being Molted		5.4	5.4	100
Percent with Molt Completed		23.6	22.2	94
Layers Sold for Slaughter During Apr	1,000	14,770	14,162	96
Layers Rendered, Died, Destroyed, Composted or Disappeared For Any Reason During Apr	1,000	9,661	8,325	86
Pullets on May 1	1,000	99,426	100,007	101
Pullets Added During Apr ³	1,000	20,449	21,120	103

¹ Totals may not add due to rounding.

² Revised.

³ Pullet chicks less than 3 days old added to pullet flocks.

**Layers and Eggs: Layers on Hand and Eggs Produced by Type,
and Forced Molt, United States, May-June 2006-07¹**

Item	Unit	2006	2007	2007 as % of 2006
Layers During May	1,000			
All Layers		345,223	340,705	99
Table Egg Type		286,801	281,326	98
Hatching Egg Type		58,422	59,379	102
Broiler-Type Hatching		55,571	56,530	102
Egg-Type Hatching		2,851	2,849	100
Eggs per 100 Layers During May	Number			
All Layers		2,212	2,226	101
Table Egg Type		2,273	2,292	101
Hatching Egg Type		1,912	1,913	100
Broiler-Type Hatching		1,884	1,889	100
Egg-Type Hatching		2,455	2,387	97
Eggs Produced During May	Million			
All Layers		7,637	7,584	99
Table Egg Type		6,520	6,449	99
Hatching Egg Type		1,117	1,136	102
Broiler-Type Hatching		1,047	1,068	102
Egg-Type Hatching		70	68	97
Layers on Jun 1	1,000			
All Layers		343,596	339,293	99
Table Egg Type		285,488	279,929	98
Hatching Egg Type		58,108	59,364	102
Broiler-Type Hatching		55,269	56,545	102
Egg-Type Hatching		2,839	2,819	99
Eggs per 100 Layers on Jun 1	Number			
All Layers		71.2	72.4	102
Table Egg Type		73.1	74.7	102
Hatching Egg Type		61.4	61.7	100
Broiler-Type Hatching		60.5	61.0	101
Egg-Type Hatching		79.0	76.4	97
Forced Molt Layers on Jun 1	Percent			
Percent Being Molted		4.7	3.6	77
Percent with Molt Completed		24.7	24.0	97
Layers Sold for Slaughter During May	1,000	14,187	12,907	91
Layers Rendered, Died, Destroyed, Composted or Disappeared For Any Reason During May	1,000	9,943	8,311	84
Pullets on Jun 1	1,000	101,171	101,074	100
Pullets Added During May ²	1,000	24,432	21,156	87

¹ Totals may not add due to rounding.

² Pullet chicks less than 3 days old added to pullet flocks.

**Layers and Eggs: Layers on Hand and Eggs Produced by State
and United States, During April 2006-07**

State	Table Egg Layers in Flocks 30,000 and Above		All Layers ¹		Eggs per 100 for All Layers ¹	
	2006	2007 ²	2006	2007 ²	2006	2007 ²
	<i>1,000</i>	<i>1,000</i>	<i>1,000</i>	<i>1,000</i>	<i>Number</i>	<i>Number</i>
AL	1,691	1,206	8,917	8,627	1,828	1,889
AR	4,402	4,465	14,558	14,439	1,868	1,925
CA	19,373	18,913	19,860	19,355	2,100	2,118
CO	3,169	3,216	3,635	3,737	2,366	2,328
CT	2,814	2,943	2,865	3,004	2,339	2,330
FL	10,707	9,836	11,111	10,315	2,232	2,220
GA	10,025	9,815	19,836	19,593	2,011	2,042
HI	445	368	461	380	1,800	1,763
IL	4,470	4,508	4,699	4,740	2,192	2,110
IN	23,945	23,630	24,637	24,283	2,232	2,211
IA	51,842	51,534	52,645	52,475	2,207	2,180
ME	3,960	3,913	4,033	3,977	2,157	2,188
MD	2,447	2,336	2,589	2,478	2,240	2,300
MI	7,929	8,826	8,192	9,090	2,356	2,387
MN	10,626	10,146	11,113	10,641	2,205	2,255
MS	1,654	1,597	6,494	6,515	1,971	1,903
MO	6,004	5,732	7,157	6,880	2,208	2,238
NE	11,698	11,033	11,773	11,108	2,183	2,152
NY	3,554	3,619	3,808	4,147	2,311	2,339
NC	3,332	4,182	11,060	12,075	1,989	1,988
OH	27,899	26,705	28,423	27,274	2,213	2,196
OR	2,516	2,402	2,700	2,579	2,259	2,326
PA	22,060	20,892	23,947	22,560	2,313	2,336
SC	3,857	3,532	5,103	4,851	2,038	1,958
SD	3,121	3,048	3,221	3,148	2,204	2,224
TX	14,458	14,196	18,950	18,704	2,206	2,203
VA	1,434	1,383	3,337	3,252	2,038	1,999
WA	4,830	4,627	4,898	4,694	2,123	2,237
WI	4,124	4,468	4,651	5,031	2,322	2,226
Oth Sts ³	15,772	15,665	23,970	23,862	2,157	2,137
US	284,158	278,736	348,643	343,814	2,164	2,163

¹ Includes all layers and eggs produced in both table egg and hatching egg flocks regardless of size.

² Revised.

³ Not published separately to avoid disclosing data for individual operations.

**Layers and Eggs: Layers on Hand and Eggs Produced by State
and United States, During May 2006-07**

State	Table Egg Layers in Flocks 30,000 and Above		All Layers ¹		Eggs per 100 for All Layers ¹	
	2006	2007	2006	2007	2006	2007
	<i>1,000</i>	<i>1,000</i>	<i>1,000</i>	<i>1,000</i>	<i>Number</i>	<i>Number</i>
AL	1,574	1,136	8,863	8,562	1,884	1,904
AR	4,196	4,318	14,249	14,363	1,944	1,991
CA	18,923	18,747	19,447	19,148	2,108	2,152
CO	3,284	3,256	3,791	3,777	2,400	2,356
CT	2,637	2,889	2,689	2,947	2,343	2,307
FL	10,380	9,921	10,751	10,430	2,297	2,272
GA	9,892	9,397	19,639	19,246	2,077	2,058
HI	430	355	446	367	1,861	1,880
IL	4,524	4,641	4,758	4,873	2,207	2,196
IN	23,938	23,569	24,644	24,261	2,252	2,267
IA	51,188	51,092	51,967	52,035	2,232	2,289
ME	3,970	3,835	4,040	3,888	2,178	2,315
MD	2,556	2,413	2,700	2,557	2,333	2,307
MI	8,026	8,561	8,288	8,825	2,401	2,482
MN	10,527	10,171	11,038	10,644	2,265	2,292
MS	1,652	1,534	6,542	6,413	2,018	1,980
MO	5,991	5,834	7,140	6,930	2,269	2,280
NE	11,523	10,943	11,598	11,018	2,225	2,196
NY	3,543	3,554	3,793	4,078	2,426	2,452
NC	3,180	4,285	10,877	12,255	2,078	2,089
OH	27,851	25,594	28,368	26,174	2,245	2,266
OR	2,541	2,354	2,736	2,525	2,376	2,376
PA	21,986	20,656	23,914	22,348	2,392	2,398
SC	3,962	3,506	5,179	4,793	2,066	2,024
SD	3,058	3,016	3,158	3,116	2,280	2,279
TX	13,990	14,008	18,365	18,495	2,265	2,260
VA	1,342	1,373	3,174	3,293	2,111	2,004
WA	4,792	4,707	4,860	4,772	2,263	2,305
WI	4,119	4,446	4,631	5,005	2,332	2,318
Oth Sts ²	15,442	15,386	23,578	23,567	2,214	2,190
US	281,017	275,497	345,223	340,705	2,212	2,226

¹ Includes all layers and eggs produced in both table egg and hatching egg flocks regardless of size.

² Not published separately to avoid disclosing data for individual operations.

**Egg Production: By Type, State, and United States,
April 2006-07¹**

State	Total Production		Table Eggs ²		Hatching Eggs ²	
	2006	2007 ³	2006	2007	2006	2007 ³
	<i>Million Eggs</i>	<i>Million Eggs</i>	<i>Million Eggs</i>	<i>Million Eggs</i>	<i>Million Eggs</i>	<i>Million Eggs</i>
AL	163	163	34	27	129	136
AR	272	278	99	102	173	176
CA	417	410				
CO	86	87				
CT	67	70				
FL	248	229	240	219	8	10
GA	399	400	219	218	180	182
HI	8.3	6.7	8.3	6.7	0	0
IL	103	100	100	97	3	3
IN	550	537	538	525	12	12
IA	1,162	1,144	1,147	1,128	15	16
ME	87	87				
MD	58	57	57	55	1	2
MI	193	217				
MN	245	240	237	232	8	8
MS	128	124	39	36	89	88
MO	158	154				
NE	257	239	257	239	0	0
NY	88	97				
NC	220	240	83	101	137	139
OH	629	599				
OR	61	60	59	58	2	2
PA	554	527	534	508	20	19
SC	104	95	85	73	19	22
SD	71	70	71	70	0	0
TX	418	412				
VA	68	65	34	32	34	33
WA	104	105				
WI	108	112				
Oth Sts ⁴	517	510	391	381	126	129
US	7,543	7,435	6,468	6,341	1,075	1,094

¹ Totals may not add due to rounding.

² Data by type of flock not shown for some States to avoid disclosing individual operations, data included in US totals.

³ Revised.

⁴ Not published separately to avoid disclosing data for individual operations.

**Egg Production: By Type, State, and United States,
May 2006-07¹**

State	Total Production		Table Eggs ²		Hatching Eggs ²	
	2006	2007	2006	2007	2006	2007
	<i>Million Eggs</i>	<i>Million Eggs</i>	<i>Million Eggs</i>	<i>Million Eggs</i>	<i>Million Eggs</i>	<i>Million Eggs</i>
AL	167	163	33	25	134	138
AR	277	286	94	102	183	184
CA	410	412				
CO	91	89				
CT	63	68				
FL	247	237	241	227	6	10
GA	408	396	221	206	187	190
HI	8.3	6.9	8.3	6.9	0	0
IL	105	107	101	103	4	4
IN	555	550	542	538	13	12
IA	1,160	1,191	1,145	1,175	15	16
ME	88	90				
MD	63	59	61	57	2	2
MI	199	219				
MN	250	244	241	236	9	8
MS	132	127	38	36	94	91
MO	162	158				
NE	258	242	258	242	0	0
NY	92	100				
NC	226	256	84	108	142	148
OH	637	593				
OR	65	60	63	58	2	2
PA	572	536	550	516	22	20
SC	107	97	87	75	20	22
SD	72	71	72	71	0	0
TX	416	418				
VA	67	66	33	30	34	36
WA	110	110				
WI	108	116				
Oth Sts ³	522	516	393	382	129	134
US	7,637	7,584	6,520	6,449	1,117	1,136

¹ Totals may not add due to rounding.

² Data by type of flock not shown for some States to avoid disclosing individual operations, data included in US totals.

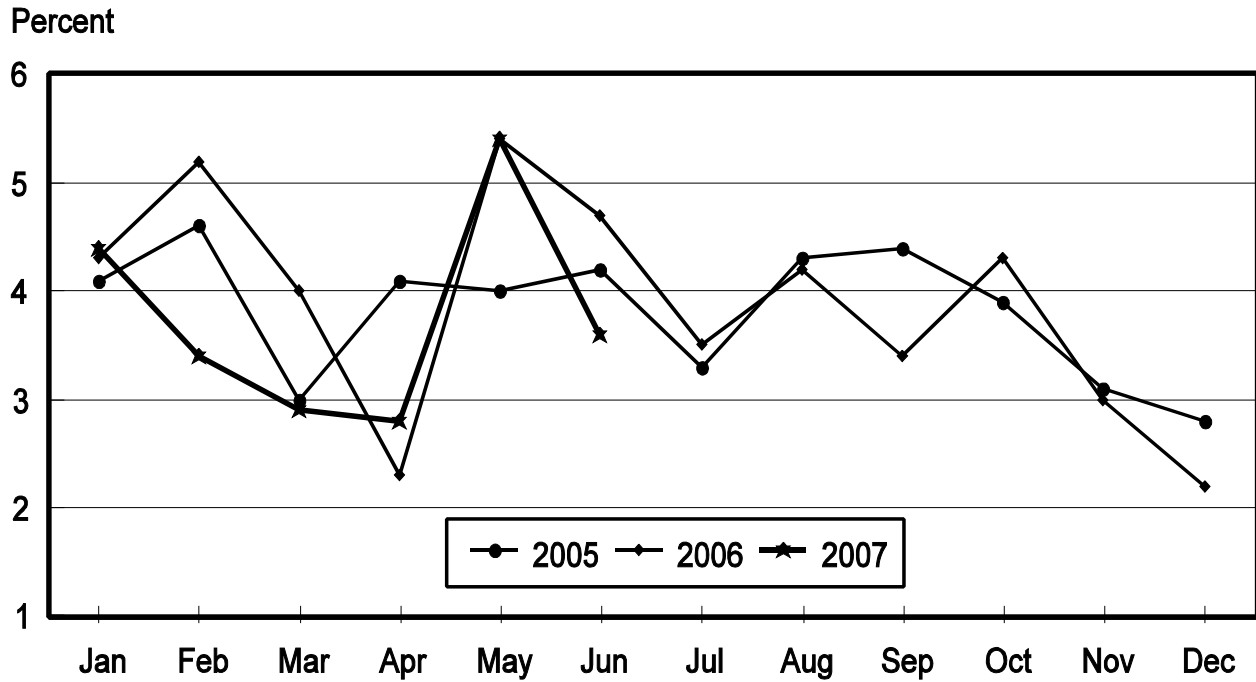
³ Not published separately to avoid disclosing data for individual operations.

**Forced Molt: Percent of All Layers by Month,
United States, 2006-07¹**

Month	Percent Being Molted		Percent with Molt Completed	
	2006	2007	2006	2007
	<i>Percent</i>	<i>Percent</i>	<i>Percent</i>	<i>Percent</i>
Jan	4.3	4.4	23.0	24.5
Feb	5.2	3.4	23.7	24.4
Mar	4.0	2.9	24.4	24.1
Apr	2.3	2.8	24.9	23.4
May	5.4	5.4	23.6	22.2
Jun	4.7	3.6	24.7	24.0
Jul	3.5		25.6	
Aug	4.2		25.2	
Sep	3.4		25.9	
Oct	4.3		25.8	
Nov	3.0		26.0	
Dec	2.2		26.6	

¹ As of first of month.

**All Layers: Percent Being Molted
United States, 2005 - 2007
First of the Month**



**Forced Molt: Percent of All Layers by State
and United States, June 2006-07¹**

State	Percent Being Molted		Percent with Molt Completed	
	2006	2007	2006	2007
	<i>Percent</i>	<i>Percent</i>	<i>Percent</i>	<i>Percent</i>
AL	1.0	2.0	4.0	5.5
AR	0.0	2.5	10.0	12.0
CA	13.5	5.0	37.0	32.5
CO	0.0	0.0	24.5	21.5
CT	8.5	0.0	14.5	18.0
FL	4.0	8.5	36.0	28.0
GA	6.0	3.0	10.5	14.0
HI	5.5	8.5	56.5	63.5
IL	7.0	5.5	24.5	32.0
IN	3.5	4.0	28.0	32.5
IA	4.0	3.5	37.0	37.5
ME	0.0	0.0	0.0	0.0
MD	5.5	5.0	32.5	38.5
MI	8.0	2.0	21.0	20.0
MN	2.5	2.5	33.5	25.0
MS	2.0	1.0	11.0	11.0
MO	5.5	6.0	23.5	20.0
NE	8.5	5.0	28.5	17.0
NY	1.0	2.5	14.5	6.0
NC	0.5	0.0	10.5	8.0
OH	7.5	2.0	22.0	23.0
OR	14.0	2.5	26.0	38.5
PA	4.0	2.0	17.5	15.0
SC	5.5	7.5	30.0	24.5
SD	4.5	5.0	17.0	19.5
TX	1.5	5.5	26.0	23.5
VA	6.0	7.0	12.5	15.0
WA	9.0	6.5	50.0	46.0
WI	1.5	7.0	36.5	27.5
Oth Sts ²	2.9	4.6	23.1	25.8
US	4.7	3.6	24.7	24.0

¹ As of first of month.

² Not published separately to avoid disclosing data for individual operations.

**Hatchery Production: Eggs in Incubators, Chicks Hatched,
and Placements by Type, United States, May-June 2006-07**

Item	2006	2007	2007 as % of 2006
	<i>1,000</i>	<i>1,000</i>	<i>Percent</i>
Egg-Type			
Eggs in Incubators on Jun 1	36,520	39,990	110
Chicks Hatched During May	39,744	38,498	97
Chicks Hatched Jan thru May	182,552	192,431	105
Pullets Hatched During May for Intended Placements in Hatchery Supply Flocks 7-18 Months Earlier ¹	241 2,871	192 2,889	80 101
Broiler-Type			
Eggs in Incubators on Jun 1	661,322	680,815	103
Chicks Hatched During May	812,137	837,386	103
Chicks Hatched Jan thru May	3,955,662	3,969,461	100
Pullets Hatched During May for Intended Placements in Hatchery Supply Flocks 7-15 Months Earlier ²	7,531 64,311	7,746 64,259	103 100

¹ 2007 includes pullet chicks hatched Nov 2005 through Oct 2006.

² 2007 includes pullet chicks hatched Feb 2006 through Oct 2006.

**Egg-Type Eggs in Incubators: By Region and United States,
June 1, 2006-07**

Region	2006	2007	2007 as % of 2006
	<i>1,000</i>	<i>1,000</i>	<i>Percent</i>
North Atlantic	6,182	6,265	101
E North Central	7,239	8,039	111
W North Central	8,609	9,930	115
South Atlantic	4,764	5,061	106
South Central	5,089	5,479	108
West	4,637	5,216	112
US	36,520	39,990	110

Regions:

North Atlantic = CT, ME, MA, NH, NJ, NY, PA, RI, VT.

E North Central = IL, IN, MI, OH, WI.

W North Central = IA, KS, MN, MO, NE, ND, SD.

South Atlantic = DE, FL, GA, MD, NC, SC, VA, WV.

South Central = AL, AR, KY, LA, MS, OK, TN, TX.

West = AK, AZ, CA, CO, HI, ID, MT, NM, NV, OR, UT, WA, WY.

**Egg-Type Chicks Hatched: By State and United States,
May 2006-07**

State	During May			Jan-May		
	2006	2007	2007 as % of 2006	2006	2007	2007 as % of 2006
	<i>1,000</i>	<i>1,000</i>	<i>Percent</i>	<i>1,000</i>	<i>1,000</i>	<i>Percent</i>
GA	2,326	2,265	97	11,523	11,367	99
IN	5,261	5,761	110	25,221	28,087	111
IA	7,619	7,857	103	34,089	37,555	110
MN	979	1,065	109	4,974	4,866	98
PA	4,617	4,550	99	21,877	24,422	112
Oth Sts ¹	18,942	17,000	90	84,868	86,134	101
US	39,744	38,498	97	182,552	192,431	105

¹ Not published separately to avoid disclosing data for individual operations.

Egg-Type Chicks Hatched: By Month, United States, 2006-07

Month	By Months			Cumulative		
	2006	2007	2007 as % of 2006	2006	2007	2007 as % of 2006
	<i>1,000</i>	<i>1,000</i>	<i>Percent</i>	<i>1,000</i>	<i>1,000</i>	<i>Percent</i>
Jan	35,159	36,926	105	35,159	36,926	105
Feb	33,409	36,766	110	68,568	73,692	107
Mar	38,805	40,537	104	107,373	114,229	106
Apr	35,435	39,704	112	142,808	153,933	108
May	39,744	38,498	97	182,552	192,431	105
Jun	37,406			219,958		
Jul	32,727			252,685		
Aug	35,611			288,296		
Sep	36,873			325,169		
Oct	36,162			361,331		
Nov	31,554			392,885		
Dec	33,183			426,068		

**Intended Placements: Egg-Type Pullet Chicks for Hatchery Supply
Flocks by Month and Total, United States, 2006-07¹**

Month	Pullet Chicks Hatched		2007 as % of 2006	Cumulative Potential Plcmts Relative to Current Supply Flocks 7-18 Months Earlier ²	
	2006	2007		2006	2007
	<i>1,000</i>	<i>1,000</i>	<i>Percent</i>	<i>1,000</i>	<i>1,000</i>
Jan	223	265	119	2,844	2,870
Feb	200	166	83	2,852	2,947
Mar	261	316	121	2,795	2,970
Apr	254	274	108	2,951	2,855
May	241	192	80	2,871	2,889
Jun	198			2,823	2,915
Jul	319			2,835	2,873
Aug	284			2,902	2,915
Sep	260			2,899	2,881
Oct	222			2,850	2,936
Nov	206			2,796	2,956
Dec	205			2,847	2,907
Total	2,873				

¹ Reported by leading breeders. Coverage may not be 100 percent. Includes expected pullet chicks from eggs sold during the preceding month at the rate of 125 pullet chicks per 30 dozen case of eggs.

² For May 2007, includes breeder pullet chicks hatched Nov 2005 through Oct 2006. The 7-18 months represent the first laying cycle. Molting and additional laying cycles will increase the cumulative potential placements.

**Broiler-Type Eggs in Incubators: By Region
and United States, June 1, 2006-07**

Region	2006	2007	2007 as % of 2006
	<i>1,000</i>	<i>1,000</i>	<i>Percent</i>
North Atlantic	12,259	12,094	99
E North Central	9,387	11,237	120
W North Central	30,512	30,362	100
South Atlantic	243,818	253,769	104
South Central	340,061	347,854	102
West	25,285	25,499	101
US	661,322	680,815	103

**Broiler-Type Chicks Hatched: By State
and United States, May 2006-07**

State	During May			Jan-May		
	2006	2007	2007 as % of 2006	2006	2007	2007 as % of 2006
	<i>1,000</i>	<i>1,000</i>	<i>Percent</i>	<i>1,000</i>	<i>1,000</i>	<i>Percent</i>
AL	115,159	115,972	101	564,912	555,436	98
AR	104,065	106,622	102	518,234	504,110	97
DE	13,342	15,386	115	69,090	72,131	104
FL	5,113	5,108	100	24,609	24,673	100
GA	127,988	132,300	103	613,695	630,340	103
KY	26,878	28,775	107	127,143	136,713	108
LA	14,893	14,523	98	73,421	69,030	94
MD	31,778	32,545	102	155,803	154,619	99
MS	67,775	70,629	104	334,119	339,849	102
NC	69,596	73,185	105	335,997	345,344	103
OK	23,478	24,426	104	115,451	117,538	102
PA	14,604	14,546	100	70,064	69,419	99
SC	19,067	20,296	106	92,456	96,339	104
TX	55,246	56,440	102	273,608	266,121	97
VA	23,997	24,236	101	116,247	113,716	98
CA, MO, TN, & WV	73,583	75,424	103	355,114	358,100	101
19 Sts ¹	786,562	810,413	103	3,839,963	3,853,478	100
Oth Sts ²	25,575	26,973	105	115,699	115,983	100
US	812,137	837,386	103	3,955,662	3,969,461	100

¹ States in the weekly hatchery production estimating program.

² Not published separately to avoid disclosing data for individual operations.

Broiler-Type Chicks Hatched: By Month, United States, 2006-07

Month	By Months			Cumulative		
	2006	2007	2007 as % of 2006	2006	2007	2007 as % of 2006
	<i>1,000</i>	<i>1,000</i>	<i>Percent</i>	<i>1,000</i>	<i>1,000</i>	<i>Percent</i>
Jan	804,801	797,066	99	804,801	797,066	99
Feb	733,425	723,753	99	1,538,226	1,520,819	99
Mar	817,842	810,732	99	2,356,068	2,331,551	99
Apr	787,457	800,524	102	3,143,525	3,132,075	100
May	812,137	837,386	103	3,955,662	3,969,461	100
Jun	788,652			4,744,314		
Jul	801,537			5,545,851		
Aug	810,030			6,355,881		
Sep	772,258			7,128,139		
Oct	772,942			7,901,081		
Nov	729,946			8,631,027		
Dec	796,523			9,427,550		

**Intended Placements: Broiler-Type Pullet Chicks for Hatchery
Supply Flocks by Month and Total, 2006-07 ¹**

Month	Pullet Chicks Hatched		2007 as % of 2006	Cumulative Potential Plcmts Relative to Current Supply Flocks 7-15 Months Earlier ²	
	2006	2007		2006	2007
	<i>1,000</i>	<i>1,000</i>	<i>Percent</i>	<i>1,000</i>	<i>1,000</i>
US Place- ments					
Jan	6,825	7,015	103	62,860	64,544
Feb	7,593	7,071	93	63,060	64,056
Mar	7,012	7,135	102	63,416	64,389
Apr	6,593	6,692	102	63,776	64,340
May	7,531	7,746	103	64,311	64,259
Jun	7,636			64,284	64,284
Jul	6,456			64,319	64,448
Aug	7,631			64,344	64,870
Sep	7,063			64,154	64,410
Oct	6,744			64,057	63,909
Nov	7,618			63,993	64,145
Dec	7,176			64,040	64,260
Annual Total	85,878				
Total Place- ments ³					
Jan	8,018	8,772	109		
Feb	9,026	8,811	98		
Mar	8,415	9,025	107		
Apr	7,558	8,358	111		
May	8,930	9,749	109		
Jun	9,144				
Jul	7,845				
Aug	9,170				
Sep	8,742				
Oct	8,028				
Nov	9,550				
Dec	8,700				
Annual Total	103,126				

¹ Reported by leading breeders. Coverage may not be 100 percent. Includes expected pullet chicks from eggs sold during the preceding month at the rate of 125 pullet chicks per 30 dozen case of eggs.

² For May 2007, includes breeder pullet chicks hatched Feb 2006 through Oct 2006.

³ U.S. production of intended placements worldwide.

Reliability of Chicken and Eggs Estimates

Survey Procedures: Primary data for the "**Chickens and Eggs**" report are from weekly and/or monthly questionnaires sent to producers. An attempt is made to collect information for layer and egg estimates from each known contractor and independent producer who has at least 30,000 table egg layers, flocks of hatchery supply layers, or pullet only operations with at least 500 pullets. Coverage for operations with less than 30,000 table egg layers are estimated each month based on data reported in December. Approximately 650 contractors, independent egg producers, and pullet only operations are contacted each month. All known hatcheries, approximately 300, are contacted for information on a weekly and/or monthly basis.

Estimating Procedures: Sound statistical methodology is employed to derive estimates from the reported data. All data are checked for unusual values. Data from each operation are compared to their own past operating profile and to trends from similar operations. Data for missing operations are estimated based on similar operations or historical data. NASS field offices prepare these estimates by using a combination of survey indications and historic trends. Individual State estimates are reviewed by the Agricultural Statistics Board for reasonableness. Individual hatchery data are summed to State, regional, and U.S. totals.

For chicken hatcheries, chicks hatched consist of all chicks of domesticated breeds including males and chicks destined for hatchery supply flocks and research purposes. Eggs set are eggs in incubators for the purpose of hatching. The relationship of egg-type chicks hatched to chicken inventory and poultry marketings are carefully monitored. The disposition of egg-type chicks hatched prior to placement into the laying flock can vary significantly, which can make comparisons to changes in layer inventory inconsistent over time. Broiler chicks placed are specifically placed on feed for meat production. Intended placement data reported by leading breeders include pullet chicks expected from eggs sold the preceding month. The breeders in this report account for a large percentage of replacement pullets for hatchery supply flocks. Production of replacement pullets by these breeders indicates the number of pullets available to hatchery supply flocks several months before the pullets will actually move into the flocks. "Hatchery Supply Flocks" include all generations of layers which could lay eggs to supply a hatchery. This includes the generations of parents, grandparents, great-grandparents, pedigree, etc. Also included are research flocks, vaccine flocks, and specific pathogen-free flocks. The broiler cumulative potential placements are a moving total of the intended placements 7-15 months earlier. The egg-type cumulative potential placements of 7-18 months represent the first laying cycle. Molting and additional laying cycles will increase the cumulative potential placements of egg-type hatching flocks.

Revision Policy: The previous month's estimates are subject to revision if late reports or corrected data indicates a different level. Additionally, revisions after the monthly report will be made at the end of the marketing year and published in the annual reports of "**Chickens and Eggs Summary**" and "**Hatchery Production**".

Reliability: Estimates are based on a census of all known contractors and independent producers who have at least 30,000 table egg layers, flocks of hatchery supply layers, pullet only operations with at least 500 pullets, or operating hatcheries and therefore, have no sampling error. However, estimates are subject to errors such as omission, duplication, and mistakes in reporting, recording, and processing the data. While these errors cannot be measured directly, they are minimized through strict quality controls in the data collection process and a careful review of all reported data for consistency and reasonableness.

Information Contacts

Listed below are the commodity specialists in the Livestock Branch of the National Agricultural Statistics Service to contact for additional information.

Dan Kerestes, Chief, Livestock Branch	(202) 720-3570
Darin Jantzi, Head, Poultry and Specialty Commodities Section	(202) 720-3570
David Colwell - Cold Storage	(202) 720-8784
Fleming Gibson - Egg Products, Poultry Slaughter, Catfish Processing, Mink	(202) 690-3237
Darin Jantzi - Layers, Eggs	(202) 720-3570
Sharyn Lavender - Broiler Hatchery, Chicken Hatchery, Honey	(202) 720-3244
Toby Paterson - Catfish Production, Trout Production, Census of Aquaculture, Turkey Hatchery, Turkeys Raised	(202) 720-0585

ACCESS TO REPORTS!!

For your convenience, there are several ways to obtain NASS reports, data products, and services:

INTERNET ACCESS

All NASS reports are available free of charge on the worldwide Internet. For access, connect to the Internet and go to the NASS Home Page at: www.nass.usda.gov.

E-MAIL SUBSCRIPTION

All NASS reports are available by subscription free of charge direct to your e-mail address. Starting with the NASS Home Page at www.nass.usda.gov, under the right navigation, *Receive reports by Email*, click on **National** or **State**. Follow the instructions on the screen.

PRINTED REPORTS OR DATA PRODUCTS

CALL OUR TOLL-FREE ORDER DESK: 800-999-6779 (U.S. and Canada)
Other areas, please call 703-605-6220 FAX: 703-605-6900
(Visa, MasterCard, check, or money order acceptable for payment.)

ASSISTANCE

For **assistance** with general agricultural statistics or further information about NASS or its products or services, contact the **Agricultural Statistics Hotline** at **800-727-9540**, 7:30 a.m. to 4:00 p.m. ET, or e-mail: nass@nass.usda.gov.

The U.S. Department of Agriculture (USDA) prohibits discrimination in all its programs and activities on the basis of race, color, national origin, age, disability, and where applicable, sex, marital status, familial status, parental status, religion, sexual orientation, genetic information, political beliefs, reprisal, or because all or a part of an individual's income is derived from any public assistance program. (Not all prohibited bases apply to all programs.) Persons with disabilities who require alternative means for communication of program information (Braille, large print, audiotape, etc.) should contact USDA's TARGET Center at (202) 720-2600 (voice and TDD).

To file a complaint of discrimination, write to USDA, Director, Office of Civil Rights, 1400 Independence Avenue, S.W., Washington, D.C. 20250-9410, or call (800) 795-3272 (voice) or (202) 720-6382 (TDD). USDA is an equal opportunity provider and employer.