



NASS

FACT FINDERS FOR AGRICULTURE
UNITED STATES DEPARTMENT OF AGRICULTURE

Washington, D.C.

Chickens And Eggs

Released September 21, 2007, by the National Agricultural Statistics Service (NASS), Agricultural Statistics Board, U.S. Department of Agriculture. For information on "Layers and Eggs" call Kim Linonis at (202) 690-8632, for "Chicks Hatched" call Sharyn Lavender at (202) 720-3244, office hours 7:30 a.m. to 4:00 p.m. ET.

August Egg Production Down 1 Percent

U.S. egg production totaled 7.57 billion during August 2007, down 1 percent from last year. Production included 6.44 billion table eggs, and 1.13 billion hatching eggs, of which 1.07 billion were broiler-type and 65 million were egg-type. The total number of layers during August 2007 averaged 339 million, down 1 percent from last year. August egg production per 100 layers was 2,229 eggs, down slightly from August 2006.

All layers in the U.S. on September 1, 2007 totaled 339 million, down 1 percent from last year. The 339 million layers consisted of 281 million layers producing table or market type eggs, 55.9 million layers producing broiler-type hatching eggs, and 2.73 million layers producing egg-type hatching eggs. Rate of lay per day on September 1, 2007, averaged 71.7 eggs per 100 layers, down 1 percent from September 1, 2006.

Egg-Type Chicks Hatched Up 3 Percent

Egg-type chicks hatched during August 2007 totaled 36.8 million, up 3 percent from August 2006. Eggs in incubators totaled 35.3 million on September 1, 2007, down 4 percent from a year ago.

Domestic placements of egg-type pullet chicks for future hatchery supply flocks by leading breeders totaled 278,000 during August 2007, down 2 percent from August 2006.

Broiler-Type Chicks Hatched Up 2 Percent

Broiler-type chicks hatched during August 2007 totaled 829 million, up 2 percent from August 2006. Eggs in incubators totaled 670 million on September 1, 2007, up 2 percent from a year earlier.

Leading breeders placed 7.68 million broiler-type pullet chicks for future domestic hatchery supply flocks during August 2007, up 1 percent from August 2006.

Contents

Page

U.S. Average Number of Layers on Hand and Egg Production	1
U.S. Layers on Hand and Eggs Produced by Type, Forced Molt, and Pullets	3
Layers on Hand and Eggs Produced by State	5
Egg Production by Type and State	7
Forced Molt	9
Egg-Type Hatchery	11
Egg-Type Intended Placements	13
Broiler-Type Hatchery	13
Broiler-Type Intended Placements	15
Procedures and Reliability	16
Information Contacts	16

**All Layers: Average Number on Hand During the Month,
United States, 2005-07**

Month	2005	2006	2007
	<i>1,000 Layers</i>	<i>1,000 Layers</i>	<i>1,000 Layers</i>
Dec ¹	345,615	348,810	348,098
Jan	347,874	349,677	347,133
Feb	348,784	350,018	347,079
Mar	347,120	350,470	346,437
Apr	343,927	348,643	343,814
May	342,162	345,223	341,052
Jun	340,200	342,685	339,130
Jul ²	338,917	341,252	338,892
Aug	339,777	341,540	339,471
Sep	341,433	343,147	
Oct	343,381	344,538	
Nov	346,314	346,936	

¹ December preceding year.

² Revised 2007 only.

**Eggs: Production During the Month by Type,
United States, 2006-07 ¹**

Month	Total Eggs		Table Eggs		Hatching Eggs	
	2006	2007	2006	2007	2006	2007
	<i>Million Eggs</i>	<i>Million Eggs</i>	<i>Million Eggs</i>	<i>Million Eggs</i>	<i>Million Eggs</i>	<i>Million Eggs</i>
Dec ²	7,793	7,777	6,697	6,683	1,096	1,094
Jan	7,727	7,637	6,622	6,535	1,105	1,102
Feb	6,980	6,916	5,983	5,918	997	998
Mar	7,843	7,769	6,732	6,646	1,112	1,123
Apr	7,543	7,435	6,468	6,341	1,075	1,094
May	7,637	7,591	6,520	6,449	1,117	1,143
Jun	7,401	7,355	6,336	6,243	1,066	1,113
Jul ³	7,645	7,573	6,550	6,435	1,095	1,138
Aug	7,647	7,568	6,557	6,438	1,090	1,130
Sep	7,430		6,379		1,051	
Oct	7,678		6,600		1,078	
Nov	7,549		6,506		1,043	
During Year	90,877		77,954		12,927	

¹ Totals may not add due to rounding.

² December preceding year.

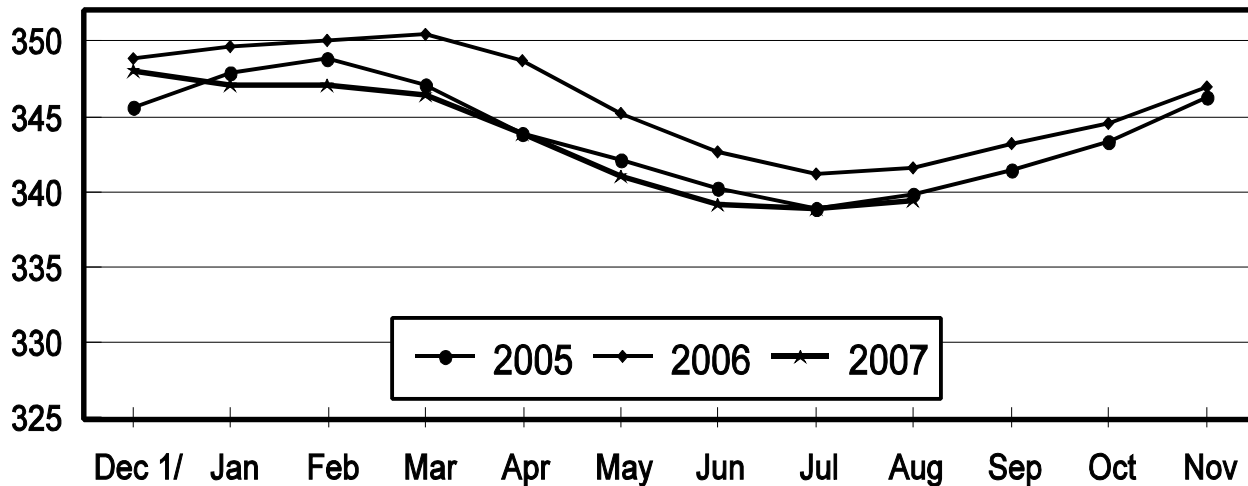
³ Revised 2007 only.

Average Number of Layers

United States, 2005 - 2007

During the Month

Million Layers



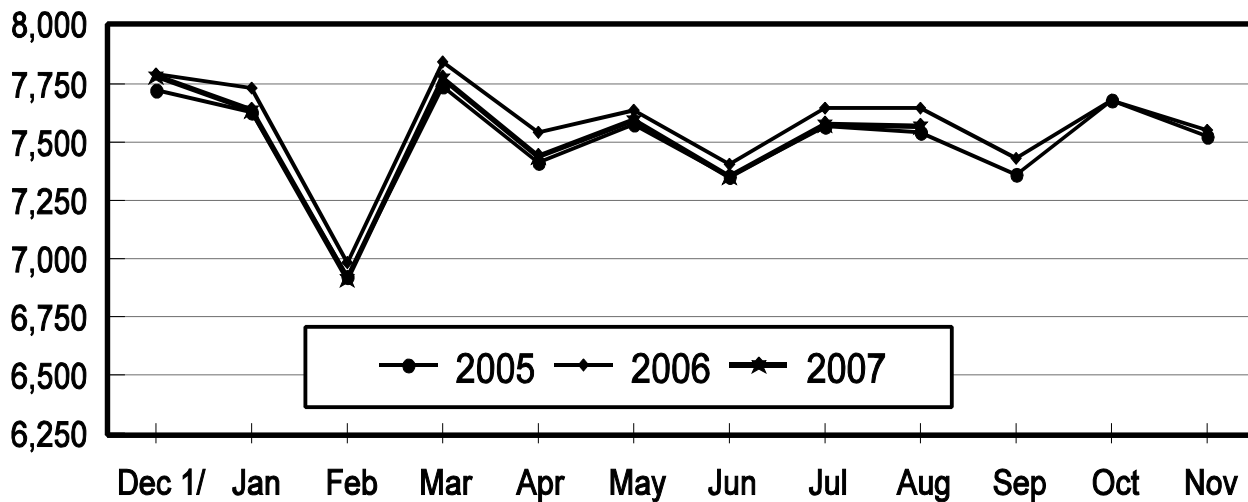
1/ Previous Year

All Egg Production

United States, 2005 - 2007

During the Month

Million Eggs



1/ Previous Year

**Layers and Eggs: Layers on Hand and Eggs Produced by Type,
and Forced Molt, United States, July-August 2006-07 ¹**

Item	Unit	2006	2007 ²	2007 as % of 2006
Layers During Jul	1,000			
All Layers		341,252	338,892	99
Table Egg Type		283,888	279,737	99
Hatching Egg Type		57,364	59,155	103
Broiler-Type Hatching		54,571	56,415	103
Egg-Type Hatching		2,793	2,740	98
Eggs per 100 Layers During Jul	Number			
All Layers		2,240	2,235	100
Table Egg Type		2,307	2,300	100
Hatching Egg Type		1,909	1,924	101
Broiler-Type Hatching		1,886	1,900	101
Egg-Type Hatching		2,363	2,409	102
Eggs Produced During Jul	Million			
All Layers		7,645	7,573	99
Table Egg Type		6,550	6,435	98
Hatching Egg Type		1,095	1,138	104
Broiler-Type Hatching		1,029	1,072	104
Egg-Type Hatching		66	66	100
Layers on Aug 1	1,000			
All Layers		340,728	339,505	100
Table Egg Type		283,401	280,537	99
Hatching Egg Type		57,327	58,968	103
Broiler-Type Hatching		54,569	56,246	103
Egg-Type Hatching		2,758	2,722	99
Eggs per 100 Layers on Aug 1	Number			
All Layers		71.7	72.1	101
Table Egg Type		73.8	74.2	101
Hatching Egg Type		61.4	61.9	101
Broiler-Type Hatching		60.6	61.1	101
Egg-Type Hatching		76.2	77.1	101
Forced Molt Layers on Aug 1	Percent			
Percent Being Molted		4.2	3.4	81
Percent with Molt Completed		25.2	23.5	93
Layers Sold for Slaughter During Jul	1,000	11,434	12,871	113
Layers Rendered, Died, Destroyed, Composted or Disappeared For Any Reason During Jul	1,000	9,197	7,434	81
Pullets on Aug 1	1,000	101,755	102,416	101
Pullets Added During Jul ³	1,000	21,265	20,865	98

¹ Totals may not add due to rounding.

² Revised.

³ Pullet chicks less than 3 days old added to pullet flocks.

**Layers and Eggs: Layers on Hand and Eggs Produced by Type,
and Forced Molt, United States, August-September 2006-07¹**

Item	Unit	2006	2007	2007 as % of 2006
Layers During Aug	1,000			
All Layers		341,540	339,471	99
Table Egg Type		284,265	280,676	99
Hatching Egg Type		57,275	58,795	103
Broiler-Type Hatching		54,529	56,065	103
Egg-Type Hatching		2,746	2,730	99
Eggs per 100 Layers During Aug	Number			
All Layers		2,239	2,229	100
Table Egg Type		2,307	2,294	99
Hatching Egg Type		1,903	1,922	101
Broiler-Type Hatching		1,880	1,900	101
Egg-Type Hatching		2,367	2,381	101
Eggs Produced During Aug	Million			
All Layers		7,647	7,568	99
Table Egg Type		6,557	6,438	98
Hatching Egg Type		1,090	1,130	104
Broiler-Type Hatching		1,025	1,065	104
Egg-Type Hatching		65	65	100
Layers on Sep 1	1,000			
All Layers		342,309	339,387	99
Table Egg Type		285,107	280,793	98
Hatching Egg Type		57,202	58,594	102
Broiler-Type Hatching		54,474	55,866	103
Egg-Type Hatching		2,728	2,728	100
Eggs per 100 Layers on Sep 1	Number			
All Layers		72.6	71.7	99
Table Egg Type		74.9	73.7	98
Hatching Egg Type		61.2	61.9	101
Broiler-Type Hatching		60.5	61.2	101
Egg-Type Hatching		75.8	75.7	100
Forced Molt Layers on Sep 1	Percent			
Percent Being Molted		3.4	3.5	103
Percent with Molt Completed		25.9	24.0	93
Layers Sold for Slaughter During Aug	1,000	12,693	13,345	105
Layers Rendered, Died, Destroyed, Composted or Disappeared For Any Reason During Aug	1,000	7,854	7,356	94
Pullets on Sep 1	1,000	100,560	101,001	100
Pullets Added During Aug ²	1,000	22,612	21,691	96

¹ Totals may not add due to rounding.

² Pullet chicks less than 3 days old added to pullet flocks.

**Layers and Eggs: Layers on Hand and Eggs Produced by State
and United States, During July 2006-07**

State	Table Egg Layers in Flocks 30,000 and Above		All Layers ¹		Eggs per 100 for All Layers ¹	
	2006	2007 ²	2006	2007 ²	2006	2007 ²
	<i>1,000</i>	<i>1,000</i>	<i>1,000</i>	<i>1,000</i>	<i>Number</i>	<i>Number</i>
AL	1,457	1,194	8,562	9,153	1,974	1,945
AR	4,167	4,041	13,976	13,838	1,939	1,973
CA	18,443	18,562	18,957	18,869	2,121	2,157
CO	3,210	3,144	3,703	3,685	2,511	2,469
CT	2,643	2,646	2,703	2,702	2,294	2,443
FL	10,228	10,040	10,619	10,564	2,222	2,310
GA	9,399	9,387	19,101	19,121	2,073	2,061
HI	422	353	438	369	1,963	1,897
IL	4,790	4,719	5,028	4,945	2,287	2,285
IN	23,526	23,357	24,251	24,044	2,284	2,283
IA	50,301	51,969	51,038	52,878	2,357	2,275
ME	4,000	3,742	4,065	3,807	2,263	2,285
MD	2,475	2,440	2,607	2,593	2,378	2,275
MI	8,264	8,686	8,521	8,941	2,371	2,371
MN	10,487	10,044	10,934	10,521	2,232	2,262
MS	1,610	1,564	6,361	6,457	2,075	2,013
MO	6,094	5,600	7,206	6,717	2,304	2,263
NE	11,665	10,748	11,740	10,823	2,232	2,347
NY	3,718	3,692	3,976	4,216	2,515	2,443
NC	3,134	4,359	10,718	12,137	2,053	2,060
OH	26,986	25,253	27,495	25,815	2,233	2,270
OR	2,506	2,240	2,682	2,414	2,424	2,361
PA	21,601	20,254	23,503	21,884	2,438	2,417
SC	3,853	3,357	5,018	4,644	2,112	2,132
SD	3,178	3,043	3,278	3,143	2,227	2,259
TX	14,252	13,999	18,702	18,502	2,246	2,259
VA	1,325	1,316	3,159	3,196	1,994	2,065
WA	4,627	4,531	4,691	4,596	2,345	2,328
WI	4,089	4,216	4,602	4,774	2,303	2,409
Oth Sts ³	15,654	15,408	23,618	23,544	2,223	2,187
US	278,104	273,904	341,252	338,892	2,240	2,235

¹ Includes all layers and eggs produced in both table egg and hatching egg flocks regardless of size.

² Revised.

³ Not published separately to avoid disclosing data for individual operations.

**Layers and Eggs: Layers on Hand and Eggs Produced by State
and United States, During August 2006-07**

State	Table Egg Layers in Flocks 30,000 and Above		All Layers ¹		Eggs per 100 for All Layers ¹	
	2006	2007	2006	2007	2006	2007
	<i>1,000</i>	<i>1,000</i>	<i>1,000</i>	<i>1,000</i>	<i>Number</i>	<i>Number</i>
AL	1,512	1,155	8,615	9,014	1,962	1,941
AR	4,261	4,161	13,988	13,803	1,966	2,000
CA	18,479	18,879	18,986	19,146	2,154	2,152
CO	3,363	3,179	3,868	3,721	2,456	2,338
CT	2,606	2,653	2,665	2,708	2,439	2,437
FL	10,099	10,132	10,498	10,642	2,296	2,283
GA	9,595	9,464	19,356	19,190	2,087	2,048
HI	413	352	429	368	1,911	1,848
IL	4,884	4,794	5,122	5,020	2,226	2,251
IN	23,665	23,293	24,357	23,948	2,250	2,259
IA	49,946	51,853	50,681	52,783	2,352	2,292
ME	3,960	3,712	4,026	3,786	2,335	2,272
MD	2,483	2,631	2,610	2,772	2,337	2,128
MI	8,598	8,493	8,850	8,744	2,350	2,413
MN	10,274	10,026	10,723	10,493	2,229	2,240
MS	1,603	1,536	6,295	6,342	2,081	2,034
MO	6,026	5,606	7,116	6,779	2,305	2,168
NE	11,574	10,733	11,649	10,808	2,309	2,406
NY	3,766	3,675	4,024	4,195	2,510	2,479
NC	3,363	4,550	10,945	12,204	2,047	2,081
OH	27,202	25,369	27,716	25,922	2,190	2,253
OR	2,515	2,305	2,674	2,483	2,393	2,457
PA	21,336	20,242	23,260	21,937	2,425	2,411
SC	3,763	3,323	4,958	4,618	2,138	2,079
SD	3,171	3,100	3,271	3,200	2,232	2,250
TX	14,331	14,049	18,789	18,611	2,251	2,182
VA	1,344	1,361	3,198	3,186	1,939	2,072
WA	4,702	4,619	4,765	4,682	2,267	2,264
WI	4,095	4,231	4,595	4,789	2,394	2,443
Oth Sts ²	15,552	15,367	23,511	23,577	2,207	2,218
US	278,481	274,843	341,540	339,471	2,239	2,229

¹ Includes all layers and eggs produced in both table egg and hatching egg flocks regardless of size.

² Not published separately to avoid disclosing data for individual operations.

**Egg Production: By Type, State, and United States,
July 2006-07 ¹**

State	Total Production		Table Eggs ²		Hatching Eggs ²	
	2006	2007 ³	2006	2007 ³	2006	2007
	<i>Million Eggs</i>	<i>Million Eggs</i>	<i>Million Eggs</i>	<i>Million Eggs</i>	<i>Million Eggs</i>	<i>Million Eggs</i>
AL	169	178	36	28	133	150
AR	271	273	95	93	176	180
CA	402	407				
CO	93	91				
CT	62	66				
FL	236	244	229	234	7	10
GA	396	394	209	206	187	188
HI	8.6	7.0	8.6	7.0	0	0
IL	115	113	111	109	4	4
IN	554	549	541	537	13	12
IA	1,203	1,203	1,191	1,188	12	15
ME	92	87				
MD	62	59	60	57	2	2
MI	202	212				
MN	244	238	236	229	8	9
MS	132	130	40	38	92	92
MO	166	152				
NE	262	254	262	254	0	0
NY	100	103				
NC	220	250	80	105	140	145
OH	614	586				
OR	65	57	63	55	2	2
PA	573	529	552	510	21	19
SC	106	99	87	77	19	22
SD	73	71	73	71	0	0
TX	420	418				
VA	63	66	30	30	33	36
WA	110	107				
WI	106	115				
Oth Sts ⁴	525	515	398	383	127	132
US	7,645	7,573	6,550	6,435	1,095	1,138

¹ Totals may not add due to rounding.

² Data by type of flock not shown for some States to avoid disclosing individual operations, data included in US totals.

³ Revised.

⁴ Not published separately to avoid disclosing data for individual operations.

**Egg Production: By Type, State, and United States,
August 2006-07 ¹**

State	Total Production		Table Eggs ²		Hatching Eggs ²	
	2006	2007	2006	2007	2006	2007
	<i>Million Eggs</i>	<i>Million Eggs</i>	<i>Million Eggs</i>	<i>Million Eggs</i>	<i>Million Eggs</i>	<i>Million Eggs</i>
AL	169	175	37	27	132	148
AR	275	276	99	100	176	176
CA	409	412				
CO	95	87				
CT	65	66				
FL	241	243	234	233	7	10
GA	404	393	216	205	188	188
HI	8.2	6.8	8.2	6.8	0	0
IL	114	113	110	109	4	4
IN	548	541	536	529	12	12
IA	1,192	1,210	1,180	1,195	12	15
ME	94	86				
MD	61	59	59	57	2	2
MI	208	211				
MN	239	235	231	227	8	8
MS	131	129	39	38	92	91
MO	164	147				
NE	269	260	269	260	0	0
NY	101	104				
NC	224	254	85	110	139	144
OH	607	584				
OR	64	61	62	59	2	2
PA	564	529	543	509	21	20
SC	106	96	85	74	21	22
SD	73	72	73	72	0	0
TX	423	406				
VA	62	66	29	32	33	34
WA	108	106				
WI	110	117				
Oth Sts ³	519	523	394	389	125	134
US	7,647	7,568	6,557	6,438	1,090	1,130

¹ Totals may not add due to rounding.

² Data by type of flock not shown for some States to avoid disclosing individual operations, data included in US totals.

³ Not published separately to avoid disclosing data for individual operations.

**Forced Molt: Percent of All Layers by Month,
United States, 2006-07 ¹**

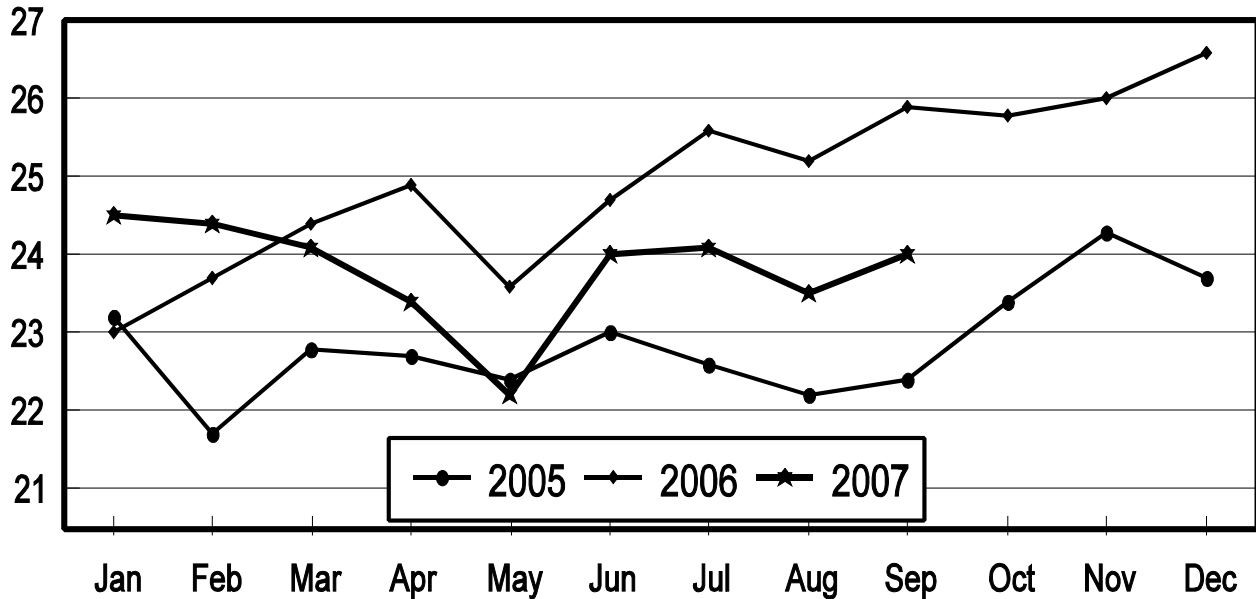
Month	Percent Being Molted		Percent with Molt Completed	
	2006	2007	2006	2007
	<i>Percent</i>	<i>Percent</i>	<i>Percent</i>	<i>Percent</i>
Jan	4.3	4.4	23.0	24.5
Feb	5.2	3.4	23.7	24.4
Mar	4.0	2.9	24.4	24.1
Apr	2.3	2.8	24.9	23.4
May	5.4	5.4	23.6	22.2
Jun	4.7	3.6	24.7	24.0
Jul	3.5	4.0	25.6	24.1
Aug ²	4.2	3.4	25.2	23.5
Sep	3.4	3.5	25.9	24.0
Oct	4.3		25.8	
Nov	3.0		26.0	
Dec	2.2		26.6	

¹ As of first of month.

² Revised 2007 only.

All Layers: Percent Molt Completed United States, 2005 - 2007 First of the Month

Percent



**Forced Molt: Percent of All Layers by State
and United States, September 2006-07 ¹**

State	Percent Being Molted		Percent with Molt Completed	
	2006	2007	2006	2007
	<i>Percent</i>	<i>Percent</i>	<i>Percent</i>	<i>Percent</i>
AL	0.0	2.0	4.5	4.5
AR	2.0	0.5	11.5	13.0
CA	5.0	6.5	37.0	32.0
CO	2.5	4.0	21.0	16.0
CT	0.0	0.0	17.0	10.0
FL	7.5	5.5	41.0	37.0
GA	2.0	2.5	11.5	15.0
HI	8.5	9.5	54.0	53.5
IL	5.5	3.5	33.5	39.5
IN	3.0	4.0	32.0	32.0
IA	4.5	4.5	34.0	36.5
ME	0.0	0.0	0.0	0.0
MD	0.0	8.5	44.5	28.5
MI	7.5	4.0	21.5	21.0
MN	3.5	3.5	36.0	23.5
MS	2.0	2.0	12.0	10.0
MO	1.0	4.0	24.5	16.5
NE	2.5	4.0	27.5	18.0
NY	1.5	2.5	11.5	7.0
NC	1.0	0.0	9.5	9.5
OH	3.0	3.0	28.0	21.0
OR	6.0	4.0	26.5	32.5
PA	2.5	2.5	17.0	13.5
SC	3.5	4.0	36.0	29.0
SD	5.0	5.0	22.0	19.0
TX	3.0	4.5	25.5	25.5
VA	3.0	2.5	18.0	24.0
WA	11.0	6.0	52.0	41.0
WI	0.0	1.5	37.0	35.0
Oth Sts ²	3.6	3.6	25.5	25.1
US	3.4	3.5	25.9	24.0

¹ As of first of month.

² Not published separately to avoid disclosing data for individual operations.

**Hatchery Production: Eggs in Incubators, Chicks Hatched,
and Placements by Type, United States, August-September 2006-07**

Item	2006	2007	2007 as % of 2006
	<i>1,000</i>	<i>1,000</i>	<i>Percent</i>
Egg-Type			
Eggs in Incubators on Sep 1	36,724	35,305	96
Chicks Hatched During Aug	35,611	36,838	103
Chicks Hatched Jan thru Aug	288,296	304,834	106
Pullets Hatched During Aug for Intended Placements in Hatchery Supply Flocks 7-18 Months Earlier ¹	284 2,902	278 2,915	98 100
Broiler-Type			
Eggs in Incubators on Sep 1	656,902	669,586	102
Chicks Hatched During Aug	810,030	828,788	102
Chicks Hatched Jan thru Aug	6,355,881	6,429,533	101
Pullets Hatched During Aug for Intended Placements in Hatchery Supply Flocks 7-15 Months Earlier ²	7,631 64,344	7,684 64,870	101 101

¹ 2007 includes pullet chicks hatched Feb 2006 through Jan 2007.

² 2007 includes pullet chicks hatched May 2006 through Jan 2007.

**Egg-Type Eggs in Incubators: By Region and United States,
September 1, 2006-07**

Region	2006	2007	2007 as % of 2006
	<i>1,000</i>	<i>1,000</i>	<i>Percent</i>
North Atlantic	6,440	5,152	80
E North Central	6,906	6,728	97
W North Central	8,580	8,935	104
South Atlantic	4,615	4,285	93
South Central	5,431	5,411	100
West	4,752	4,794	101
US	36,724	35,305	96

Regions:

North Atlantic = CT, ME, MA, NH, NJ, NY, PA, RI, VT.

E North Central = IL, IN, MI, OH, WI.

W North Central = IA, KS, MN, MO, NE, ND, SD.

South Atlantic = DE, FL, GA, MD, NC, SC, VA, WV.

South Central = AL, AR, KY, LA, MS, OK, TN, TX.

West = AK, AZ, CA, CO, HI, ID, MT, NM, NV, OR, UT, WA, WY.

**Egg-Type Chicks Hatched: By State and United States,
August 2006-07**

State	During August			Jan-Aug		
	2006	2007	2007 as % of 2006	2006	2007	2007 as % of 2006
	<i>1,000</i>	<i>1,000</i>	<i>Percent</i>	<i>1,000</i>	<i>1,000</i>	<i>Percent</i>
GA	2,069	2,165	105	17,996	17,859	99
IN	4,918	5,088	103	40,063	43,410	108
IA	6,694	7,373	110	53,338	60,440	113
MN	975	1,047	107	7,617	8,168	107
PA	5,057	4,040	80	35,411	37,139	105
Oth Sts ¹	15,898	17,125	108	133,871	137,818	103
US	35,611	36,838	103	288,296	304,834	106

¹ Not published separately to avoid disclosing data for individual operations.

Egg-Type Chicks Hatched: By Month, United States, 2006-07

Month	By Months			Cumulative		
	2006	2007	2007 as % of 2006	2006	2007	2007 as % of 2006
	<i>1,000</i>	<i>1,000</i>	<i>Percent</i>	<i>1,000</i>	<i>1,000</i>	<i>Percent</i>
Jan	35,159	36,926	105	35,159	36,926	105
Feb	33,409	36,766	110	68,568	73,692	107
Mar	38,805	40,537	104	107,373	114,229	106
Apr	35,435	39,704	112	142,808	153,933	108
May	39,744	38,498	97	182,552	192,431	105
Jun	37,406	40,005	107	219,958	232,436	106
Jul	32,727	35,560	109	252,685	267,996	106
Aug	35,611	36,838	103	288,296	304,834	106
Sep	36,873			325,169		
Oct	36,162			361,331		
Nov	31,554			392,885		
Dec	33,183			426,068		

**Intended Placements: Egg-Type Pullet Chicks for Hatchery Supply
Flocks by Month and Total, United States, 2006-07¹**

Month	Pullet Chicks Hatched		2007 as % of 2006	Cumulative Potential Plcmts Relative to Current Supply Flocks 7-18 Months Earlier ²	
	2006	2007		2007	2008
	<i>1,000</i>	<i>1,000</i>	<i>Percent</i>	<i>1,000</i>	<i>1,000</i>
Jan	223	265	119	2,870	3,008
Feb	200	166	83	2,947	2,872
Mar	261	316	121	2,970	2,866
Apr	254	274	108	2,855	
May	241	191	79	2,889	
Jun	198	300	152	2,915	
Jul	319	183	57	2,873	
Aug	284	278	98	2,915	
Sep	260			2,881	
Oct	222			2,936	
Nov	206			2,956	
Dec	205			2,906	
Total	2,873				

¹ Reported by leading breeders. Coverage may not be 100 percent. Includes expected pullet chicks from eggs sold during the preceding month at the rate of 125 pullet chicks per 30 dozen case of eggs.

² For August 2007, includes breeder pullet chicks hatched Feb 2006 through Jan 2007. The 7-18 months represent the first laying cycle. Molting and additional laying cycles will increase the cumulative potential placements.

**Broiler-Type Eggs in Incubators: By Region
and United States, September 1, 2006-07**

Region	2006	2007	2007 as % of 2006
	<i>1,000</i>	<i>1,000</i>	<i>Percent</i>
North Atlantic	11,751	13,257	113
E North Central	9,121	11,354	124
W North Central	30,300	30,026	99
South Atlantic	242,917	249,240	103
South Central	338,605	342,663	101
West	24,208	23,046	95
US	656,902	669,586	102

**Broiler-Type Chicks Hatched: By State
and United States, August 2006-07**

State	During August			Jan-Aug		
	2006	2007	2007 as % of 2006	2006	2007	2007 as % of 2006
	<i>1,000</i>	<i>1,000</i>	<i>Percent</i>	<i>1,000</i>	<i>1,000</i>	<i>Percent</i>
AL	117,638	119,091	101	911,784	902,207	99
AR	103,379	104,740	101	825,025	816,671	99
DE	14,902	15,564	104	112,110	118,436	106
FL	5,066	5,049	100	39,275	39,585	101
GA	127,237	130,946	103	992,602	1,020,213	103
KY	26,933	28,323	105	205,237	221,022	108
LA	14,562	14,597	100	116,700	112,252	96
MD	32,247	31,977	99	251,724	250,218	99
MS	67,615	69,419	103	533,763	548,374	103
NC	67,688	72,944	108	538,744	560,965	104
OK	22,952	24,347	106	182,630	189,919	104
PA	14,618	14,331	98	113,372	112,092	99
SC	19,492	20,429	105	150,245	156,368	104
TX	55,149	55,741	101	437,705	433,515	99
VA	23,668	23,409	99	186,909	184,092	98
CA, MO, TN, & WV	73,274	71,830	98	571,881	574,037	100
19 Sts ¹	786,420	802,737	102	6,169,706	6,239,966	101
Oth Sts ²	23,610	26,051	110	186,175	189,567	102
US	810,030	828,788	102	6,355,881	6,429,533	101

¹ States in the weekly hatchery production estimating program.

² Not published separately to avoid disclosing data for individual operations.

Broiler-Type Chicks Hatched: By Month, United States, 2006-07

Month	By Months			Cumulative		
	2006	2007	2007 as % of 2006	2006	2007	2007 as % of 2006
	<i>1,000</i>	<i>1,000</i>	<i>Percent</i>	<i>1,000</i>	<i>1,000</i>	<i>Percent</i>
Jan	804,801	797,066	99	804,801	797,066	99
Feb	733,425	723,753	99	1,538,226	1,520,819	99
Mar	817,842	810,732	99	2,356,068	2,331,551	99
Apr	787,457	800,524	102	3,143,525	3,132,075	100
May	812,137	837,386	103	3,955,662	3,969,461	100
Jun	788,652	810,419	103	4,744,314	4,779,880	101
Jul	801,537	820,865	102	5,545,851	5,600,745	101
Aug	810,030	828,788	102	6,355,881	6,429,533	101
Sep	772,258			7,128,139		
Oct	772,942			7,901,081		
Nov	729,946			8,631,027		
Dec	796,523			9,427,550		

**Intended Placements: Broiler-Type Pullet Chicks for Hatchery
Supply Flocks by Month and Total, 2006-07 ¹**

Month	Pullet Chicks Hatched		2007 as % of 2006	Cumulative Potential Plcmts Relative to Current Supply Flocks 7-15 Months Earlier ²	
	2006	2007		2007	2008
	<i>1,000</i>	<i>1,000</i>	<i>Percent</i>	<i>1,000</i>	<i>1,000</i>
US Place- ments					
Jan	6,825	7,015	103	64,544	65,333
Feb	7,593	7,071	93	64,056	65,407
Mar	7,012	7,135	102	64,389	65,473
Apr	6,593	6,692	102	64,340	
May	7,531	8,083	107	64,259	
Jun	7,636	7,799	102	64,284	
Jul ³	6,456	6,818	106	64,448	
Aug	7,631	7,684	101	64,870	
Sep	7,063			64,410	
Oct	6,744			63,909	
Nov	7,618			64,145	
Dec	7,176			64,597	
Annual Total	85,878				
Total Place- ments ⁴					
Jan	8,018	8,772	109		
Feb	9,026	8,811	98		
Mar	8,415	9,025	107		
Apr	7,558	8,358	111		
May	8,930	9,780	110		
Jun	9,144	9,435	103		
Jul ⁵	7,845	8,370	107		
Aug	9,170	9,469	103		
Sep	8,742				
Oct	8,028				
Nov	9,550				
Dec	8,700				
Annual Total	103,126				

¹ Reported by leading breeders. Coverage may not be 100 percent. Includes expected pullet chicks from eggs sold during the preceding month at the rate of 125 pullet chicks per 30 dozen case of eggs.

² For Aug 2007, includes breeder pullet chicks hatched May 2006 through Jan 2007.

³ Revised 2007 pullet chicks hatched and cumulative placements for February 2008.

⁴ U.S. production of intended placements worldwide.

⁵ Revised 2007 only.

Reliability of Chicken and Eggs Estimates

Survey Procedures: Primary data for the "**Chickens and Eggs**" report are from weekly and/or monthly questionnaires sent to producers. An attempt is made to collect information for layer and egg estimates from each known contractor and independent producer who has at least 30,000 table egg layers, flocks of hatchery supply layers, or pullet only operations with at least 500 pullets. Coverage for operations with less than 30,000 table egg layers are estimated each month based on data reported in December. Approximately 650 contractors, independent egg producers, and pullet only operations are contacted each month. All known hatcheries, approximately 300, are contacted for information on a weekly and/or monthly basis.

Estimating Procedures: Sound statistical methodology is employed to derive estimates from the reported data. All data are checked for unusual values. Data from each operation are compared to their own past operating profile and to trends from similar operations. Data for missing operations are estimated based on similar operations or historical data. NASS field offices prepare these estimates by using a combination of survey indications and historic trends. Individual State estimates are reviewed by the Agricultural Statistics Board for reasonableness. Individual hatchery data are summed to State, regional, and U.S. totals.

For chicken hatcheries, chicks hatched consist of all chicks of domesticated breeds including males and chicks destined for hatchery supply flocks and research purposes. Eggs set are eggs in incubators for the purpose of hatching. The relationship of egg-type chicks hatched to chicken inventory and poultry marketings are carefully monitored. The disposition of egg-type chicks hatched prior to placement into the laying flock can vary significantly, which can make comparisons to changes in layer inventory inconsistent over time. Broiler chicks placed are specifically placed on feed for meat production. Intended placement data reported by leading breeders include pullet chicks expected from eggs sold the preceding month. The breeders in this report account for a large percentage of replacement pullets for hatchery supply flocks. Production of replacement pullets by these breeders indicates the number of pullets available to hatchery supply flocks several months before the pullets will actually move into the flocks. "Hatchery Supply Flocks" include all generations of layers which could lay eggs to supply a hatchery. This includes the generations of parents, grandparents, great-grandparents, pedigree, etc. Also included are research flocks, vaccine flocks, and specific pathogen-free flocks. The broiler cumulative potential placements are a moving total of the intended placements 7-15 months earlier. The egg-type cumulative potential placements of 7-18 months represent the first laying cycle. Molting and additional laying cycles will increase the cumulative potential placements of egg-type hatching flocks.

Revision Policy: The previous month's estimates are subject to revision if late reports or corrected data indicates a different level. Additionally, revisions after the monthly report will be made at the end of the marketing year and published in the annual reports of "**Chickens and Eggs Summary**" and "**Hatchery Production**".

Reliability: Estimates are based on a census of all known contractors and independent producers who have at least 30,000 table egg layers, flocks of hatchery supply layers, pullet only operations with at least 500 pullets, or operating hatcheries and therefore, have no sampling error. However, estimates are subject to errors such as omission, duplication, and mistakes in reporting, recording, and processing the data. While these errors cannot be measured directly, they are minimized through strict quality controls in the data collection process and a careful review of all reported data for consistency and reasonableness.

Information Contacts

Listed below are the commodity specialists in the Livestock Branch of the National Agricultural Statistics Service to contact for additional information.

Dan Kerestes, Chief, Livestock Branch	(202) 720-3570
Darin Jantzi, Head, Poultry and Specialty Commodities Section	(202) 720-3570
David Colwell - Cold Storage	(202) 720-8784
Fleming Gibson - Egg Products, Poultry Slaughter, Catfish Processing, Mink	(202) 690-3237
Sharyn Lavender - Broiler Hatchery, Chicken Hatchery, Honey	(202) 720-3244
Kim Linonis - Layers, Eggs	(202) 690-8632
Toby Paterson - Catfish Production, Trout Production, Census of Aquaculture, Turkey Hatchery, Turkeys Raised	(202) 720-0585

ACCESS TO REPORTS!!

For your convenience, there are several ways to obtain NASS reports, data products, and services:

INTERNET ACCESS

All NASS reports are available free of charge on the worldwide Internet. For access, connect to the Internet and go to the NASS Home Page at: www.nass.usda.gov.

E-MAIL SUBSCRIPTION

All NASS reports are available by subscription free of charge direct to your e-mail address. Starting with the NASS Home Page at www.nass.usda.gov, under the right navigation, *Receive reports by Email*, click on **National** or **State**. Follow the instructions on the screen.

PRINTED REPORTS OR DATA PRODUCTS

CALL OUR TOLL-FREE ORDER DESK: 800-999-6779 (U.S. and Canada)
Other areas, please call 703-605-6220 FAX: 703-605-6900
(Visa, MasterCard, check, or money order acceptable for payment.)

ASSISTANCE

For **assistance** with general agricultural statistics or further information about NASS or its products or services, contact the **Agricultural Statistics Hotline** at **800-727-9540**, 7:30 a.m. to 4:00 p.m. ET, or e-mail: nass@nass.usda.gov.

The U.S. Department of Agriculture (USDA) prohibits discrimination in all its programs and activities on the basis of race, color, national origin, age, disability, and where applicable, sex, marital status, familial status, parental status, religion, sexual orientation, genetic information, political beliefs, reprisal, or because all or a part of an individual's income is derived from any public assistance program. (Not all prohibited bases apply to all programs.) Persons with disabilities who require alternative means for communication of program information (Braille, large print, audiotape, etc.) should contact USDA's TARGET Center at (202) 720-2600 (voice and TDD).

To file a complaint of discrimination write to USDA, Director, Office of Civil Rights, 1400 Independence Avenue, S.W., Washington, D.C. 20250-9410 or call (800) 795-3272 (voice) or (202) 720-6382 (TDD). USDA is an equal opportunity provider and employer.