



# Chickens And Eggs

---

Released October 22, 2007, by the National Agricultural Statistics Service (NASS), Agricultural Statistics Board, U.S. Department of Agriculture. For information on "Layers and Eggs" call Kim Linonis at (202) 690-8632, for "Chicks Hatched" call Sharyn Lavender at (202) 720-3244, office hours 7:30 a.m. to 4:00 p.m. ET.

## **September Egg Production Down 1 Percent**

U.S. egg production totaled 7.37 billion during September 2007, down 1 percent from last year. Production included 6.27 billion table eggs, and 1.10 billion hatching eggs, of which 1.03 billion were broiler-type and 64 million were egg-type. The total number of layers during September 2007 averaged 340 million, down 1 percent from last year. September egg production per 100 layers was 2,169 eggs, up slightly from September 2006.

All layers in the U.S. on October 1, 2007 totaled 340 million, down 1 percent from last year. The 340 million layers consisted of 281 million layers producing table or market type eggs, 56.2 million layers producing broiler-type hatching eggs, and 2.76 million layers producing egg-type hatching eggs. Rate of lay per day on October 1, 2007, averaged 72.7 eggs per 100 layers, up 2 percent from October 1, 2006.

## **Egg-Type Chicks Hatched Down 4 Percent**

Egg-type chicks hatched during September 2007 totaled 35.3 million, down 4 percent from September 2006. Eggs in incubators totaled 33.4 million on October 1, 2007, up 2 percent from a year ago.

Domestic placements of egg-type pullet chicks for future hatchery supply flocks by leading breeders totaled 300 thousand during September 2007, up 15 percent from September 2006.

## **Broiler-Type Chicks Hatched Up 2 Percent**

Broiler-type chicks hatched during September 2007 totaled 784 million, up 2 percent from September 2006. Eggs in incubators totaled 647 million on October 1, 2007, up 2 percent from a year earlier.

Leading breeders placed 7.33 million broiler-type pullet chicks for future domestic hatchery supply flocks during September 2007, up 4 percent from September 2006.



## Contents

	<b>Page</b>
U.S. Average Number of Layers on Hand and Egg Production.....	1
U.S. Layers on Hand and Eggs Produced by Type, Forced Molt, and Pullets.....	3
Layers on Hand and Eggs Produced by State.....	5
Egg Production by Type and State.....	7
Forced Molt .....	9
Egg-Type Hatchery .....	11
Egg-Type Intended Placements .....	13
Broiler-Type Hatchery .....	13
Broiler-Type Intended Placements.....	15
Procedures and Reliability .....	16
Information Contacts .....	16

**All Layers: Average Number on Hand During the Month,  
United States, 2005-07**

Month	2005	2006	2007
	<i>1,000 Layers</i>	<i>1,000 Layers</i>	<i>1,000 Layers</i>
Dec <sup>1</sup>	345,615	348,810	348,098
Jan	347,874	349,677	347,133
Feb	348,784	350,018	347,079
Mar	347,120	350,470	346,437
Apr	343,927	348,643	343,814
May	342,162	345,223	341,052
Jun	340,200	342,685	339,130
Jul	338,917	341,252	338,892
Aug <sup>2</sup>	339,777	341,540	339,508
Sep	341,433	343,147	339,841
Oct	343,381	344,538	
Nov	346,314	346,936	

<sup>1</sup> December preceding year.

<sup>2</sup> Revised 2007 only.

**Eggs: Production During the Month by Type,  
United States, 2006-07 <sup>1</sup>**

Month	Total Eggs		Table Eggs		Hatching Eggs	
	2006	2007	2006	2007	2006	2007
	<i>Million Eggs</i>	<i>Million Eggs</i>	<i>Million Eggs</i>	<i>Million Eggs</i>	<i>Million Eggs</i>	<i>Million Eggs</i>
Dec <sup>2</sup>	7,793	7,777	6,697	6,683	1,096	1,094
Jan	7,727	7,637	6,622	6,535	1,105	1,102
Feb	6,980	6,916	5,983	5,918	997	998
Mar	7,843	7,769	6,732	6,646	1,112	1,123
Apr	7,543	7,435	6,468	6,341	1,075	1,094
May	7,637	7,591	6,520	6,449	1,117	1,143
Jun	7,401	7,355	6,336	6,243	1,066	1,113
Jul	7,645	7,573	6,550	6,435	1,095	1,138
Aug <sup>3</sup>	7,647	7,569	6,557	6,438	1,090	1,131
Sep	7,430	7,370	6,379	6,273	1,051	1,097
Oct	7,678		6,600		1,078	
Nov	7,549		6,506		1,043	
During Year	90,877		77,954		12,927	

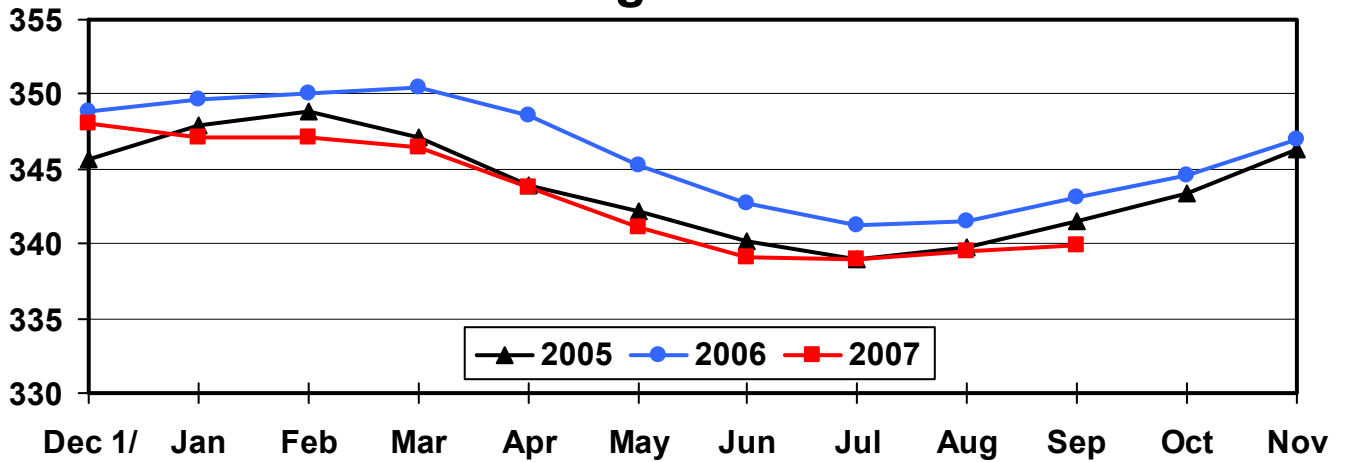
<sup>1</sup> Totals may not add due to rounding.

<sup>2</sup> December preceding year.

<sup>3</sup> Revised 2007 only.

## Average Number of Layers United States, 2005 - 2007 During the Month

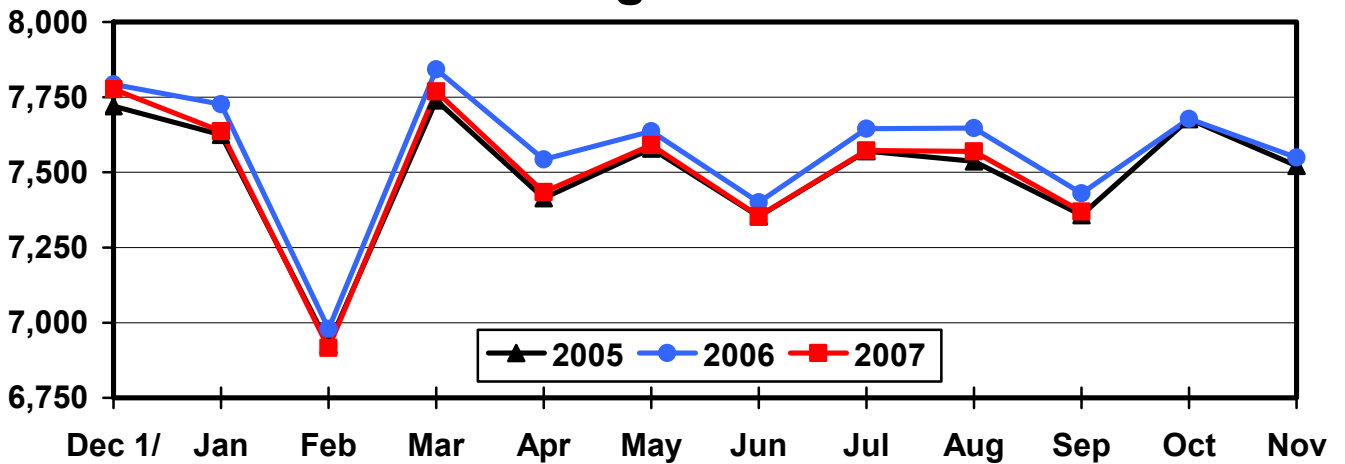
Million Layers



1/ Previous Year

## All Egg Production United States, 2005 - 2007 During the Month

Million Eggs



1/ Previous Year

**Layers and Eggs: Layers on Hand and Eggs Produced by Type,  
and Forced Molt, United States, August-September 2006-07<sup>1</sup>**

Item	Unit	2006	2007 <sup>2</sup>	2007 as % of 2006
Layers During Aug	1,000			
All Layers		341,540	339,508	99
Table Egg Type		284,265	280,676	99
Hatching Egg Type		57,275	58,832	103
Broiler-Type Hatching		54,529	56,102	103
Egg-Type Hatching		2,746	2,730	99
Eggs per 100 Layers During Aug	Number			
All Layers		2,239	2,229	100
Table Egg Type		2,307	2,294	99
Hatching Egg Type		1,903	1,922	101
Broiler-Type Hatching		1,880	1,900	101
Egg-Type Hatching		2,367	2,381	101
Eggs Produced During Aug	Million			
All Layers		7,647	7,569	99
Table Egg Type		6,557	6,438	98
Hatching Egg Type		1,090	1,131	104
Broiler-Type Hatching		1,025	1,066	104
Egg-Type Hatching		65	65	100
Layers on Sep 1	1,000			
All Layers		342,309	339,461	99
Table Egg Type		285,107	280,793	98
Hatching Egg Type		57,202	58,668	103
Broiler-Type Hatching		54,474	55,940	103
Egg-Type Hatching		2,728	2,728	100
Eggs per 100 Layers on Sep 1	Number			
All Layers		72.6	71.7	99
Table Egg Type		74.9	73.7	98
Hatching Egg Type		61.2	61.9	101
Broiler-Type Hatching		60.5	61.2	101
Egg-Type Hatching		75.8	75.7	100
Forced Molt Layers on Sep 1	Percent			
Percent Being Molted		3.4	3.5	103
Percent with Molt Completed		25.9	24.0	93
Layers Sold for Slaughter During Aug	1,000	12,693	13,352	105
Layers Rendered, Died, Destroyed, Composted or Disappeared For Any Reason During Aug	1,000	7,854	7,357	94
Pullets on Sep 1	1,000	100,560	100,752	100
Pullets Added During Aug <sup>3</sup>	1,000	22,612	21,574	95

<sup>1</sup> Totals may not add due to rounding.

<sup>2</sup> Revised.

<sup>3</sup> Pullet chicks less than 3 days old added to pullet flocks.

**Layers and Eggs: Layers on Hand and Eggs Produced by Type,  
and Forced Molt, United States, September-October 2006-07<sup>1</sup>**

Item	Unit	2006	2007	2007 as % of 2006
Layers During Sep	1,000			
All Layers		343,147	339,841	99
Table Egg Type		286,331	281,035	98
Hatching Egg Type		56,816	58,806	104
Broiler-Type Hatching		54,097	56,061	104
Egg-Type Hatching		2,719	2,745	101
Eggs per 100 Layers During Sep	Number			
All Layers		2,165	2,169	100
Table Egg Type		2,228	2,232	100
Hatching Egg Type		1,850	1,865	101
Broiler-Type Hatching		1,825	1,843	101
Egg-Type Hatching		2,354	2,332	99
Eggs Produced During Sep	Million			
All Layers		7,430	7,370	99
Table Egg Type		6,379	6,273	98
Hatching Egg Type		1,051	1,097	104
Broiler-Type Hatching		987	1,033	105
Egg-Type Hatching		64	64	100
Layers on Oct 1	1,000			
All Layers		343,946	340,179	99
Table Egg Type		287,533	281,255	98
Hatching Egg Type		56,413	58,924	104
Broiler-Type Hatching		53,710	56,169	105
Egg-Type Hatching		2,703	2,755	102
Eggs per 100 Layers on Oct 1	Number			
All Layers		71.6	72.7	102
Table Egg Type		73.6	75.0	102
Hatching Egg Type		61.9	62.1	100
Broiler-Type Hatching		61.0	61.3	100
Egg-Type Hatching		79.5	78.9	99
Forced Molt Layers on Oct 1	Percent			
Percent Being Molted		4.3	3.5	81
Percent with Molt Completed		25.8	23.6	91
Layers Sold for Slaughter During Sep	1,000	12,908	13,024	101
Layers Rendered, Died, Destroyed, Composted or Disappeared For Any Reason During Sep	1,000	6,793	6,760	100
Pullets on Oct 1	1,000	98,960	101,004	102
Pullets Added During Sep <sup>2</sup>	1,000	22,273	22,528	101

<sup>1</sup> Totals may not add due to rounding.

<sup>2</sup> Pullet chicks less than 3 days old added to pullet flocks.

**Layers and Eggs: Layers on Hand and Eggs Produced by State  
and United States, During August 2006-07**

State	Table Egg Layers in Flocks 30,000 and Above		All Layers <sup>1</sup>		Eggs per 100 for All Layers <sup>1</sup>	
	2006	2007	2006	2007 <sup>2</sup>	2006	2007 <sup>2</sup>
	<i>1,000</i>	<i>1,000</i>	<i>1,000</i>	<i>1,000</i>	<i>Number</i>	<i>Number</i>
AL	1,512	1,155	8,615	9,051	1,962	1,945
AR	4,261	4,161	13,988	13,803	1,966	2,000
CA	18,479	18,879	18,986	19,146	2,154	2,152
CO	3,363	3,179	3,868	3,721	2,456	2,338
CT	2,606	2,653	2,665	2,708	2,439	2,437
FL	10,099	10,132	10,498	10,642	2,296	2,283
GA	9,595	9,464	19,356	19,190	2,087	2,048
HI	413	352	429	368	1,911	1,848
IL	4,884	4,794	5,122	5,020	2,226	2,251
IN	23,665	23,293	24,357	23,948	2,250	2,259
IA	49,946	51,853	50,681	52,783	2,352	2,292
ME	3,960	3,712	4,026	3,786	2,335	2,272
MD	2,483	2,631	2,610	2,772	2,337	2,128
MI	8,598	8,493	8,850	8,744	2,350	2,413
MN	10,274	10,026	10,723	10,493	2,229	2,240
MS	1,603	1,536	6,295	6,342	2,081	2,034
MO	6,026	5,606	7,116	6,779	2,305	2,168
NE	11,574	10,733	11,649	10,808	2,309	2,406
NY	3,766	3,675	4,024	4,195	2,510	2,479
NC	3,363	4,550	10,945	12,204	2,047	2,081
OH	27,202	25,369	27,716	25,922	2,190	2,253
OR	2,515	2,305	2,674	2,483	2,393	2,457
PA	21,336	20,242	23,260	21,937	2,425	2,411
SC	3,763	3,323	4,958	4,618	2,138	2,079
SD	3,171	3,100	3,271	3,200	2,232	2,250
TX	14,331	14,049	18,789	18,611	2,251	2,182
VA	1,344	1,361	3,198	3,186	1,939	2,072
WA	4,702	4,619	4,765	4,682	2,267	2,264
WI	4,095	4,231	4,595	4,789	2,394	2,443
Oth Sts <sup>3</sup>	15,552	15,367	23,511	23,577	2,207	2,218
US	278,481	274,843	341,540	339,508	2,239	2,229

<sup>1</sup> Includes all layers and eggs produced in both table egg and hatching egg flocks regardless of size.

<sup>2</sup> Revised.

<sup>3</sup> Not published separately to avoid disclosing data for individual operations.



**Layers and Eggs: Layers on Hand and Eggs Produced by State  
and United States, During September 2006-07**

State	Table Egg Layers in Flocks 30,000 and Above		All Layers <sup>1</sup>		Eggs per 100 for All Layers <sup>1</sup>	
	2006	2007	2006	2007	2006	2007
	<i>1,000</i>	<i>1,000</i>	<i>1,000</i>	<i>1,000</i>	<i>Number</i>	<i>Number</i>
AL	1,660	1,182	8,748	9,082	1,875	1,861
AR	4,489	4,241	13,964	13,900	1,905	1,928
CA	18,540	18,716	19,006	18,945	2,157	2,117
CO	3,356	3,213	3,851	3,755	2,389	2,210
CT	2,605	2,824	2,662	2,879	2,367	2,327
FL	10,220	10,160	10,616	10,656	2,195	2,187
GA	9,607	9,433	19,373	19,198	2,039	2,016
HI	411	350	427	366	1,780	1,749
IL	4,832	4,891	5,076	5,115	2,266	2,268
IN	23,670	23,460	24,373	24,127	2,220	2,205
IA	50,630	51,405	51,370	52,346	2,178	2,222
ME	3,923	3,743	3,994	3,822	2,103	2,093
MD	2,582	2,626	2,708	2,759	2,253	2,066
MI	8,870	8,539	9,121	8,789	2,237	2,355
MN	10,373	9,870	10,838	10,334	2,178	2,235
MS	1,633	1,519	6,257	6,230	1,998	1,958
MO	6,180	5,646	7,267	6,821	2,202	2,184
NE	11,481	10,526	11,556	10,601	2,241	2,302
NY	3,793	3,688	4,051	4,208	2,320	2,353
NC	3,576	4,731	11,157	12,324	1,954	2,053
OH	27,479	25,479	28,003	26,055	2,196	2,226
OR	2,496	2,327	2,661	2,490	2,405	2,490
PA	21,281	20,397	23,180	22,090	2,338	2,313
SC	3,647	3,395	4,865	4,696	2,097	2,044
SD	3,144	3,098	3,244	3,198	2,158	2,220
TX	14,374	14,219	18,723	18,850	2,217	2,101
VA	1,337	1,392	3,201	3,257	2,031	2,026
WA	4,714	4,631	4,775	4,692	2,262	2,153
WI	4,012	4,376	4,515	4,941	2,259	2,287
Oth Sts <sup>2</sup>	15,632	15,125	23,565	23,315	2,122	2,175
US	280,547	275,202	343,147	339,841	2,165	2,169

<sup>1</sup> Includes all layers and eggs produced in both table egg and hatching egg flocks regardless of size.

<sup>2</sup> Not published separately to avoid disclosing data for individual operations.

**Egg Production: By Type, State, and United States,  
August 2006-07 <sup>1</sup>**

State	Total Production		Table Eggs <sup>2</sup>		Hatching Eggs <sup>2</sup>	
	2006	2007 <sup>3</sup>	2006	2007	2006	2007 <sup>3</sup>
	<i>Million Eggs</i>	<i>Million Eggs</i>	<i>Million Eggs</i>	<i>Million Eggs</i>	<i>Million Eggs</i>	<i>Million Eggs</i>
AL	169	176	37	27	132	149
AR	275	276	99	100	176	176
CA	409	412				
CO	95	87				
CT	65	66				
FL	241	243	234	233	7	10
GA	404	393	216	205	188	188
HI	8.2	6.8	8.2	6.8	0	0
IL	114	113	110	109	4	4
IN	548	541	536	529	12	12
IA	1,192	1,210	1,180	1,195	12	15
ME	94	86				
MD	61	59	59	57	2	2
MI	208	211				
MN	239	235	231	227	8	8
MS	131	129	39	38	92	91
MO	164	147				
NE	269	260	269	260	0	0
NY	101	104				
NC	224	254	85	110	139	144
OH	607	584				
OR	64	61	62	59	2	2
PA	564	529	543	509	21	20
SC	106	96	85	74	21	22
SD	73	72	73	72	0	0
TX	423	406				
VA	62	66	29	32	33	34
WA	108	106				
WI	110	117				
Oth Sts <sup>4</sup>	519	523	394	389	125	134
US	7,647	7,569	6,557	6,438	1,090	1,131

<sup>1</sup> Totals may not add due to rounding.

<sup>2</sup> Data by type of flock not shown for some States to avoid disclosing individual operations, data included in US totals.

<sup>3</sup> Revised.

<sup>4</sup> Not published separately to avoid disclosing data for individual operations.

**Egg Production: By Type, State, and United States,  
September 2006-07<sup>1</sup>**

State	Total Production		Table Eggs <sup>2</sup>		Hatching Eggs <sup>2</sup>	
	2006	2007	2006	2007	2006	2007
	<i>Million Eggs</i>	<i>Million Eggs</i>	<i>Million Eggs</i>	<i>Million Eggs</i>	<i>Million Eggs</i>	<i>Million Eggs</i>
AL	164	169	37	26	127	143
AR	266	268	99	97	167	171
CA	410	401				
CO	92	83				
CT	63	67				
FL	233	233	226	224	7	9
GA	395	387	213	203	182	184
HI	7.6	6.4	7.6	6.4	0	0
IL	115	116	111	113	4	3
IN	541	532	529	520	12	12
IA	1,119	1,163	1,107	1,148	12	15
ME	84	80				
MD	61	57	59	55	2	2
MI	204	207				
MN	236	231	228	223	8	8
MS	125	122	37	36	88	86
MO	160	149				
NE	259	244	259	244	0	0
NY	94	99				
NC	218	253	85	113	133	140
OH	615	580				
OR	64	62	62	60	2	2
PA	542	511	522	492	20	19
SC	102	96	81	74	21	22
SD	70	71	70	71	0	0
TX	415	396				
VA	65	66	32	32	33	34
WA	108	101				
WI	102	113				
Oth Sts <sup>3</sup>	500	507	378	377	122	130
US	7,430	7,370	6,379	6,273	1,051	1,097

<sup>1</sup> Totals may not add due to rounding.

<sup>2</sup> Data by type of flock not shown for some States to avoid disclosing individual operations, data included in US totals.

<sup>3</sup> Not published separately to avoid disclosing data for individual operations.

**Forced Molt: Percent of All Layers by Month,  
United States, 2006-07<sup>1</sup>**

Month	Percent Being Molted		Percent with Molt Completed	
	2006	2007	2006	2007
	<i>Percent</i>	<i>Percent</i>	<i>Percent</i>	<i>Percent</i>
Jan	4.3	4.4	23.0	24.5
Feb	5.2	3.4	23.7	24.4
Mar	4.0	2.9	24.4	24.1
Apr	2.3	2.8	24.9	23.4
May	5.4	5.4	23.6	22.2
Jun	4.7	3.6	24.7	24.0
Jul	3.5	4.0	25.6	24.1
Aug	4.2	3.4	25.2	23.5
Sep	3.4	3.5	25.9	24.0
Oct	4.3	3.5	25.8	23.6
Nov	3.0		26.0	
Dec	2.2		26.6	

<sup>1</sup> As of first of month.

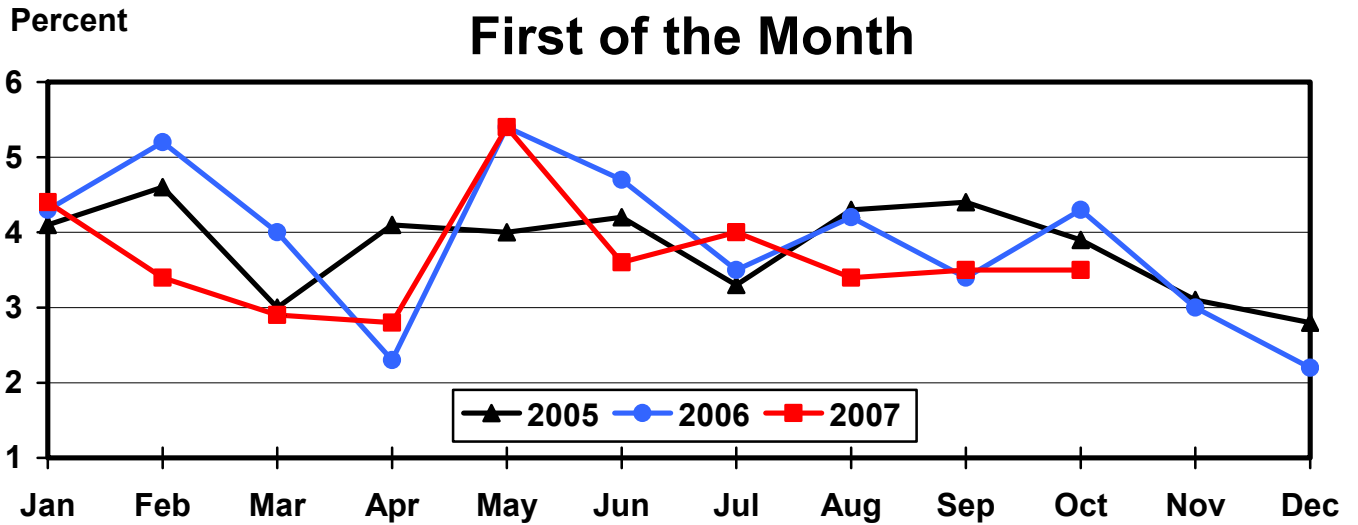
**Forced Molt: Percent of All Layers by State  
and United States, October 2006-07<sup>1</sup>**

State	Percent Being Molted		Percent with Molt Completed	
	2006	2007	2006	2007
	<i>Percent</i>	<i>Percent</i>	<i>Percent</i>	<i>Percent</i>
AL	0.0	1.0	5.0	5.5
AR	3.5	2.5	12.5	12.5
CA	5.0	5.0	37.0	31.5
CO	3.5	7.5	23.0	15.5
CT	0.0	6.0	17.0	9.5
FL	10.5	5.0	40.0	39.5
GA	4.0	2.0	11.0	15.0
HI	9.5	8.5	60.0	61.0
IL	3.5	0.0	32.0	39.0
IN	5.0	4.5	30.0	31.5
IA	5.5	5.0	35.5	36.5
ME	0.0	0.0	0.0	0.0
MD	4.5	6.0	42.0	18.0
MI	7.0	1.5	23.0	19.0
MN	4.5	4.0	36.0	28.0
MS	2.0	2.0	13.5	10.0
MO	4.0	0.5	22.0	16.0
NE	4.0	2.0	25.5	16.5
NY	3.5	5.5	10.5	5.5
NC	2.0	0.5	9.5	9.0
OH	7.0	2.5	26.5	19.5
OR	8.5	6.5	28.5	32.5
PA	1.5	4.0	16.5	12.0
SC	4.5	0.0	40.0	27.0
SD	5.0	5.0	22.0	19.0
TX	1.5	2.5	25.5	27.0
VA	0.0	2.5	19.0	21.0
WA	4.0	7.5	57.5	42.0
WI	2.5	6.5	30.0	35.5
Oth Sts <sup>2</sup>	3.7	3.4	25.7	22.8
US	4.3	3.5	25.8	23.6

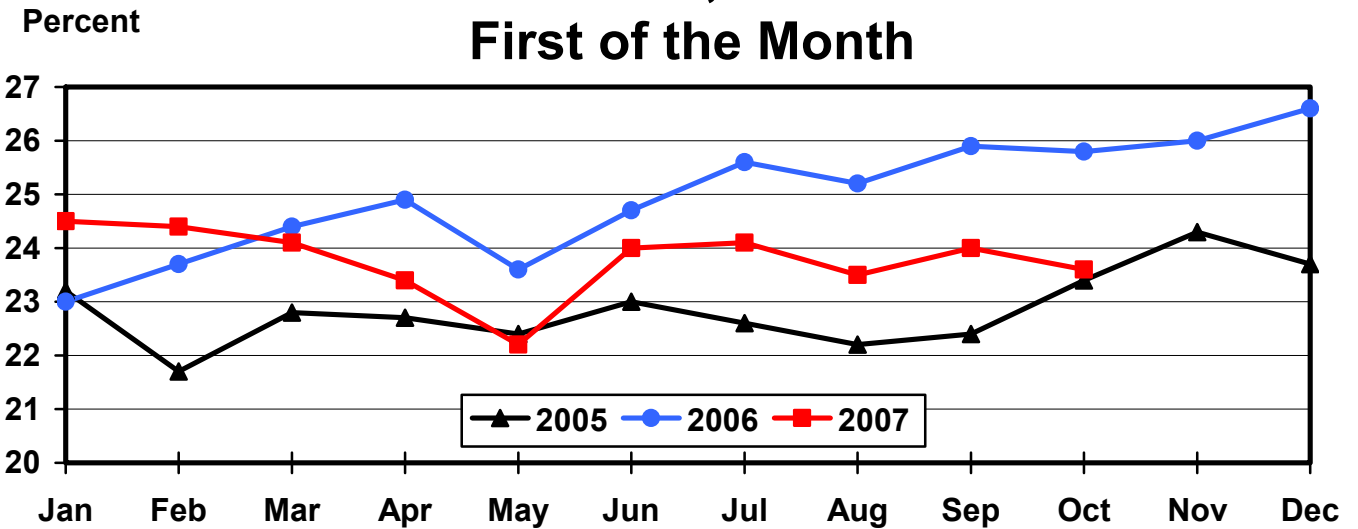
<sup>1</sup> As of first of month.

<sup>2</sup> Not published separately to avoid disclosing data for individual operations.

## All Layers: Percent Being Molted United States, 2005 - 2007



## All Layers: Percent Molt Completed United States, 2005 - 2007



**Hatchery Production: Eggs in Incubators, Chicks Hatched,  
and Placements by Type, United States, September-October 2006-07**

Item	2006	2007	2007 as % of 2006
	<i>1,000</i>	<i>1,000</i>	<i>Percent</i>
<b>Egg-Type</b>			
Eggs in Incubators on Oct 1	32,886	33,438	102
Chicks Hatched During Sep	36,873	35,270	96
Chicks Hatched Jan thru Sep	325,169	340,104	105
Pullets Hatched During Sep for Intended Placements in Hatchery Supply Flocks	260	300	115
7-18 Months Earlier <sup>1</sup>	2,899	2,881	99
<b>Broiler-Type</b>			
Eggs in Incubators on Oct 1	631,225	646,974	102
Chicks Hatched During Sep	772,258	784,155	102
Chicks Hatched Jan thru Sep	7,128,139	7,213,688	101
Pullets Hatched During Sep for Intended Placements in Hatchery Supply Flocks	7,063	7,327	104
7-15 Months Earlier <sup>2</sup>	64,154	64,410	100

<sup>1</sup> 2007 includes pullet chicks hatched Mar 2006 through Feb 2007.

<sup>2</sup> 2007 includes pullet chicks hatched Jun 2006 through Feb 2007.

**Egg-Type Eggs in Incubators: By Region and United States,  
October 1, 2006-07**

Region	2006	2007	2007 as % of 2006
	<i>1,000</i>	<i>1,000</i>	<i>Percent</i>
North Atlantic	6,105	5,535	91
E North Central	6,285	6,007	96
W North Central	7,546	7,695	102
South Atlantic	4,113	4,337	105
South Central	4,305	4,921	114
West	4,532	4,943	109
US	32,886	33,438	102

Regions:

North Atlantic = CT, ME, MA, NH, NJ, NY, PA, RI, VT.

E North Central = IL, IN, MI, OH, WI.

W North Central = IA, KS, MN, MO, NE, ND, SD.

South Atlantic = DE, FL, GA, MD, NC, SC, VA, WV.

South Central = AL, AR, KY, LA, MS, OK, TN, TX.

West = AK, AZ, CA, CO, HI, ID, MT, NM, NV, OR, UT, WA, WY.

**Egg-Type Chicks Hatched: By State and United States,  
September 2006-07**

State	During September			Jan-Sep		
	2006	2007	2007 as % of 2006	2006	2007	2007 as % of 2006
	<i>1,000</i>	<i>1,000</i>	<i>Percent</i>	<i>1,000</i>	<i>1,000</i>	<i>Percent</i>
GA	2,290	2,175	95	20,286	20,034	99
IN	4,839	4,830	100	44,902	48,240	107
IA	6,752	6,420	95	60,090	66,860	111
MN	1,037	1,012	98	8,654	9,180	106
PA	4,940	4,165	84	40,351	41,304	102
Oth Sts <sup>1</sup>	17,015	16,668	98	150,886	154,486	102
US	36,873	35,270	96	325,169	340,104	105

<sup>1</sup> Not published separately to avoid disclosing data for individual operations.

**Egg-Type Chicks Hatched: By Month, United States, 2006-07**

Month	By Months			Cumulative		
	2006	2007	2007 as % of 2006	2006	2007	2007 as % of 2006
	<i>1,000</i>	<i>1,000</i>	<i>Percent</i>	<i>1,000</i>	<i>1,000</i>	<i>Percent</i>
Jan	35,159	36,926	105	35,159	36,926	105
Feb	33,409	36,766	110	68,568	73,692	107
Mar	38,805	40,537	104	107,373	114,229	106
Apr	35,435	39,704	112	142,808	153,933	108
May	39,744	38,498	97	182,552	192,431	105
Jun	37,406	40,005	107	219,958	232,436	106
Jul	32,727	35,560	109	252,685	267,996	106
Aug	35,611	36,838	103	288,296	304,834	106
Sep	36,873	35,270	96	325,169	340,104	105
Oct	36,162			361,331		
Nov	31,554			392,885		
Dec	33,183			426,068		

**Intended Placements: Egg-Type Pullet Chicks for Hatchery Supply  
Flocks by Month and Total, United States, 2006-07<sup>1</sup>**

Month	Pullet Chicks Hatched		2007 as % of 2006	Cumulative Potential Plcmts Relative to Current Supply Flocks 7-18 Months Earlier <sup>2</sup>	
	2006	2007		2007	2008
	<i>1,000</i>	<i>1,000</i>	<i>Percent</i>	<i>1,000</i>	<i>1,000</i>
Jan	223	265	119	2,870	3,008
Feb	200	166	83	2,947	2,872
Mar	261	316	121	2,970	2,866
Apr	254	274	108	2,855	2,906
May	241	191	79	2,889	
Jun	198	300	152	2,915	
Jul	319	183	57	2,873	
Aug	284	278	98	2,915	
Sep	260	300	115	2,881	
Oct	222			2,936	
Nov	206			2,956	
Dec	205			2,906	
Total	2,873				

<sup>1</sup> Reported by leading breeders. Coverage may not be 100 percent. Includes expected pullet chicks from eggs sold during the preceding month at the rate of 125 pullet chicks per 30 dozen case of eggs.

<sup>2</sup> For September 2007, includes breeder pullet chicks hatched Mar 2006 through Feb 2007. The 7-18 months represent the first laying cycle. Molting and additional laying cycles will increase the cumulative potential placements.

**Broiler-Type Eggs in Incubators: By Region  
and United States, October 1, 2006-07**

Region	2006	2007	2007 as % of 2006
	<i>1,000</i>	<i>1,000</i>	<i>Percent</i>
North Atlantic	12,057	12,824	106
E North Central	9,181	10,570	115
W North Central	27,225	28,007	103
South Atlantic	236,816	241,581	102
South Central	324,715	330,127	102
West	21,231	23,865	112
US	631,225	646,974	102



**Broiler-Type Chicks Hatched: By State  
and United States, September 2006-07**

State	During September			Jan-Sep		
	2006	2007	2007 as % of 2006	2006	2007	2007 as % of 2006
	<i>1,000</i>	<i>1,000</i>	<i>Percent</i>	<i>1,000</i>	<i>1,000</i>	<i>Percent</i>
AL	112,080	111,529	100	1,023,864	1,013,736	99
AR	100,112	100,266	100	925,137	916,937	99
DE	13,844	14,402	104	125,954	132,838	105
FL	4,899	4,820	98	44,174	44,405	101
GA	122,512	123,642	101	1,115,114	1,143,855	103
KY	25,719	26,696	104	230,956	247,718	107
LA	13,899	14,459	104	130,599	126,711	97
MD	30,636	30,592	100	282,360	280,810	99
MS	62,749	64,871	103	596,512	613,245	103
NC	64,205	67,887	106	602,949	628,852	104
OK	22,672	23,734	105	205,302	213,653	104
PA	13,158	14,704	112	126,530	126,796	100
SC	18,638	19,029	102	168,883	175,397	104
TX	53,491	52,952	99	491,196	486,467	99
VA	22,069	22,602	102	208,978	206,694	99
CA, MO, TN, & WV	69,773	69,079	99	641,654	643,116	100
19 Sts <sup>1</sup>	750,456	761,264	101	6,920,162	7,001,230	101
Oth Sts <sup>2</sup>	21,802	22,891	105	207,977	212,458	102
US	772,258	784,155	102	7,128,139	7,213,688	101

<sup>1</sup> States in the weekly hatchery production estimating program.

<sup>2</sup> Not published separately to avoid disclosing data for individual operations.

**Broiler-Type Chicks Hatched: By Month, United States, 2006-07**

Month	By Months			Cumulative		
	2006	2007	2007 as % of 2006	2006	2007	2007 as % of 2006
	<i>1,000</i>	<i>1,000</i>	<i>Percent</i>	<i>1,000</i>	<i>1,000</i>	<i>Percent</i>
Jan	804,801	797,066	99	804,801	797,066	99
Feb	733,425	723,753	99	1,538,226	1,520,819	99
Mar	817,842	810,732	99	2,356,068	2,331,551	99
Apr	787,457	800,524	102	3,143,525	3,132,075	100
May	812,137	837,386	103	3,955,662	3,969,461	100
Jun	788,652	810,419	103	4,744,314	4,779,880	101
Jul	801,537	820,865	102	5,545,851	5,600,745	101
Aug	810,030	828,788	102	6,355,881	6,429,533	101
Sep	772,258	784,155	102	7,128,139	7,213,688	101
Oct	772,942			7,901,081		
Nov	729,946			8,631,027		
Dec	796,523			9,427,550		

**Intended Placements: Broiler-Type Pullet Chicks for Hatchery  
Supply Flocks by Month and Total, 2006-07 <sup>1</sup>**

Month	Pullet Chicks Hatched		2007 as % of 2006	Cumulative Potential Plcmts Relative to Current Supply Flocks 7-15 Months Earlier <sup>2</sup>	
	2006	2007		2007	2008
	<i>1,000</i>	<i>1,000</i>	<i>Percent</i>	<i>1,000</i>	<i>1,000</i>
US Place- ments					
Jan	6,825	7,015	103	64,544	65,333
Feb	7,593	7,071	93	64,056	65,407
Mar	7,012	7,135	102	64,389	65,581
Apr	6,593	6,692	102	64,340	65,732
May	7,531	8,083	107	64,259	
Jun	7,636	7,799	102	64,284	
Jul	6,456	6,818	106	64,448	
Aug <sup>3</sup>	7,631	7,792	102	64,870	
Sep	7,063	7,327	104	64,410	
Oct	6,744			63,909	
Nov	7,618			64,145	
Dec	7,176			64,597	
Annual Total	85,878				
Total Place- ments <sup>4</sup>					
Jan	8,018	8,772	109		
Feb	9,026	8,811	98		
Mar	8,415	9,025	107		
Apr	7,558	8,358	111		
May	8,930	9,780	110		
Jun	9,144	9,435	103		
Jul	7,845	8,370	107		
Aug <sup>5</sup>	9,170	9,466	103		
Sep	8,742	9,070	104		
Oct	8,028				
Nov	9,550				
Dec	8,700				
Annual Total	103,126				

<sup>1</sup> Reported by leading breeders. Coverage may not be 100 percent. Includes expected pullet chicks from eggs sold during the preceding month at the rate of 125 pullet chicks per 30 dozen case of eggs.

<sup>2</sup> For Sep 2007, includes breeder pullet chicks hatched Jun 2006 through Feb 2007.

<sup>3</sup> Revised 2007 pullet chicks hatched and cumulative placements for March 2008.

<sup>4</sup> U.S. production of intended placements worldwide.

<sup>5</sup> Revised 2007 only.

## Reliability of Chicken and Eggs Estimates

**Survey Procedures:** Primary data for the "**Chickens and Eggs**" report are from weekly and/or monthly questionnaires sent to producers. An attempt is made to collect information for layer and egg estimates from each known contractor and independent producer who has at least 30,000 table egg layers, flocks of hatchery supply layers, or pullet only operations with at least 500 pullets. Coverage for operations with less than 30,000 table egg layers are estimated each month based on data reported in December. Approximately 650 contractors, independent egg producers, and pullet only operations are contacted each month. All known hatcheries, approximately 300, are contacted for information on a weekly and/or monthly basis.

**Estimating Procedures:** Sound statistical methodology is employed to derive estimates from the reported data. All data are checked for unusual values. Data from each operation are compared to their own past operating profile and to trends from similar operations. Data for missing operations are estimated based on similar operations or historical data. NASS field offices prepare these estimates by using a combination of survey indications and historic trends. Individual State estimates are reviewed by the Agricultural Statistics Board for reasonableness. Individual hatchery data are summed to State, regional, and U.S. totals.

For chicken hatcheries, chicks hatched consist of all chicks of domesticated breeds including males and chicks destined for hatchery supply flocks and research purposes. Eggs set are eggs in incubators for the purpose of hatching. The relationship of egg-type chicks hatched to chicken inventory and poultry marketings are carefully monitored. The disposition of egg-type chicks hatched prior to placement into the laying flock can vary significantly, which can make comparisons to changes in layer inventory inconsistent over time. Broiler chicks placed are specifically placed on feed for meat production. Intended placement data reported by leading breeders include pullet chicks expected from eggs sold the preceding month. The breeders in this report account for a large percentage of replacement pullets for hatchery supply flocks. Production of replacement pullets by these breeders indicates the number of pullets available to hatchery supply flocks several months before the pullets will actually move into the flocks. "Hatchery Supply Flocks" include all generations of layers which could lay eggs to supply a hatchery. This includes the generations of parents, grandparents, great-grandparents, pedigree, etc. Also included are research flocks, vaccine flocks, and specific pathogen-free flocks. The broiler cumulative potential placements are a moving total of the intended placements 7-15 months earlier. The egg-type cumulative potential placements of 7-18 months represent the first laying cycle. Molting and additional laying cycles will increase the cumulative potential placements of egg-type hatching flocks.

**Revision Policy:** The previous month's estimates are subject to revision if late reports or corrected data indicates a different level. Additionally, revisions after the monthly report will be made at the end of the marketing year and published in the annual reports of "**Chickens and Eggs Summary**" and "**Hatchery Production**".

**Reliability:** Estimates are based on a census of all known contractors and independent producers who have at least 30,000 table egg layers, flocks of hatchery supply layers, pullet only operations with at least 500 pullets, or operating hatcheries and therefore, have no sampling error. However, estimates are subject to errors such as omission, duplication, and mistakes in reporting, recording, and processing the data. While these errors cannot be measured directly, they are minimized through strict quality controls in the data collection process and a careful review of all reported data for consistency and reasonableness.

### Information Contacts

Listed below are the commodity specialists in the Livestock Branch of the National Agricultural Statistics Service to contact for additional information.

Dan Kerestes, Chief, Livestock Branch .....	(202) 720-3570
Darin Jantzi, Head, Poultry and Specialty Commodities Section .....	(202) 720-3570
David Colwell - Cold Storage .....	(202) 720-8784
Fleming Gibson - Egg Products, Poultry Slaughter, Catfish Processing, Mink .....	(202) 690-3237
Sharyn Lavender - Broiler Hatchery, Chicken Hatchery, Honey .....	(202) 720-3244
Kim Linonis - Layers, Eggs .....	(202) 690-8632
Toby Paterson - Catfish Production, Trout Production, Census of Aquaculture, Turkey Hatchery, Turkeys Raised .....	(202) 720-0585

## ACCESS TO REPORTS!!

---

For your convenience, there are several ways to obtain NASS reports, data products, and services:

### INTERNET ACCESS

All NASS reports are available free of charge on the worldwide Internet. For access, connect to the Internet and go to the NASS Home Page at: [www.nass.usda.gov](http://www.nass.usda.gov).

### E-MAIL SUBSCRIPTION

All NASS reports are available by subscription free of charge direct to your e-mail address. Starting with the NASS Home Page at [www.nass.usda.gov](http://www.nass.usda.gov), under the right navigation, *Receive reports by Email*, click on **National** or **State**. Follow the instructions on the screen.

-----

### PRINTED REPORTS OR DATA PRODUCTS

**CALL OUR TOLL-FREE ORDER DESK: 800-999-6779 (U.S. and Canada)**  
**Other areas, please call 703-605-6220      FAX: 703-605-6900**  
**(Visa, MasterCard, check, or money order acceptable for payment.)**

-----

### ASSISTANCE

For **assistance** with general agricultural statistics or further information about NASS or its products or services, contact the **Agricultural Statistics Hotline** at **800-727-9540**, 7:30 a.m. to 4:00 p.m. ET, or e-mail: [nass@nass.usda.gov](mailto:nass@nass.usda.gov).

The U.S. Department of Agriculture (USDA) prohibits discrimination in all its programs and activities on the basis of race, color, national origin, age, disability, and where applicable, sex, marital status, familial status, parental status, religion, sexual orientation, genetic information, political beliefs, reprisal, or because all or a part of an individual's income is derived from any public assistance program. (Not all prohibited bases apply to all programs.) Persons with disabilities who require alternative means for communication of program information (Braille, large print, audiotape, etc.) should contact USDA's TARGET Center at (202) 720-2600 (voice and TDD).

To file a complaint of discrimination, write to USDA, Director, Office of Civil Rights, 1400 Independence Avenue, S.W., Washington, D.C. 20250-9410, or call (800) 795-3272 (voice) or (202) 720-6382 (TDD). USDA is an equal opportunity provider and employer.