

Chickens And Eggs

Released November 20, 2007, by the National Agricultural Statistics Service (NASS), Agricultural Statistics Board, U.S. Department of Agriculture. For information on "Layers and Eggs" call Kim Linonis at (202) 690-8632, for "Chicks Hatched" call Sharyn Lavender at (202) 720-3244, office hours 7:30 a.m. to 4:00 p.m. ET.

October Egg Production Up Slightly

U.S. egg production totaled 7.70 billion during October 2007, up slightly from last year. Production included 6.57 billion table eggs, and 1.13 billion hatching eggs, of which 1.06 billion were broiler-type and 67 million were egg-type. The total number of layers during October 2007 averaged 341 million, down 1 percent from last year. October egg production per 100 layers was 2,253 eggs, up 1 percent from October 2006.

All layers in the U.S. on November 1, 2007 totaled 343 million, down 1 percent from last year. The 343 million layers consisted of 284 million layers producing table or market type eggs, 56.2 million layers producing broiler-type hatching eggs, and 2.87 million layers producing egg-type hatching eggs. Rate of lay per day on November 1, 2007, averaged 72.6 eggs per 100 layers, up 1 percent from November 1, 2006.

Egg-Type Chicks Hatched Down 1 Percent

Egg-type chicks hatched during October 2007 totaled 35.8 million, down 1 percent from October 2006. Eggs in incubators totaled 34.5 million on November 1, 2007, up 9 percent from a year ago.

Domestic placements of egg-type pullet chicks for future hatchery supply flocks by leading breeders totaled 184 thousand during October 2007, down 17 percent from October 2006.

Broiler-Type Chicks Hatched Up 3 Percent

Broiler-type chicks hatched during October 2007 totaled 795 million, up 3 percent from October 2006. Eggs in incubators totaled 634 million on November 1, 2007, up 4 percent from a year earlier.

Leading breeders placed 6.97 million broiler-type pullet chicks for future domestic hatchery supply flocks during October 2007, up 3 percent from October 2006.

Contents

	Page
U.S. Average Number of Layers on Hand and Egg Production.....	1
U.S. Layers on Hand and Eggs Produced by Type, Forced Molt, and Pullets.....	3
Layers on Hand and Eggs Produced by State.....	5
Egg Production by Type and State.....	7
Forced Molt.....	9
Egg-Type Hatchery.....	11
Egg-Type Intended Placements.....	13
Broiler-Type Hatchery.....	13
Broiler-Type Intended Placements.....	15
Procedures and Reliability.....	16
Information Contacts.....	16

**All Layers: Average Number on Hand During the Month,
United States, 2005-07**

Month	2005	2006	2007
	<i>1,000 Layers</i>	<i>1,000 Layers</i>	<i>1,000 Layers</i>
Dec ¹	345,615	348,810	348,098
Jan	347,874	349,677	347,133
Feb	348,784	350,018	347,079
Mar	347,120	350,470	346,437
Apr	343,927	348,643	343,814
May	342,162	345,223	341,052
Jun	340,200	342,685	339,130
Jul	338,917	341,252	338,892
Aug	339,777	341,540	339,508
Sep	341,433	343,147	339,841
Oct	343,381	344,538	341,490
Nov	346,314	346,936	

¹ December preceding year.

**Eggs: Production During the Month by Type,
United States, 2006-07 ¹**

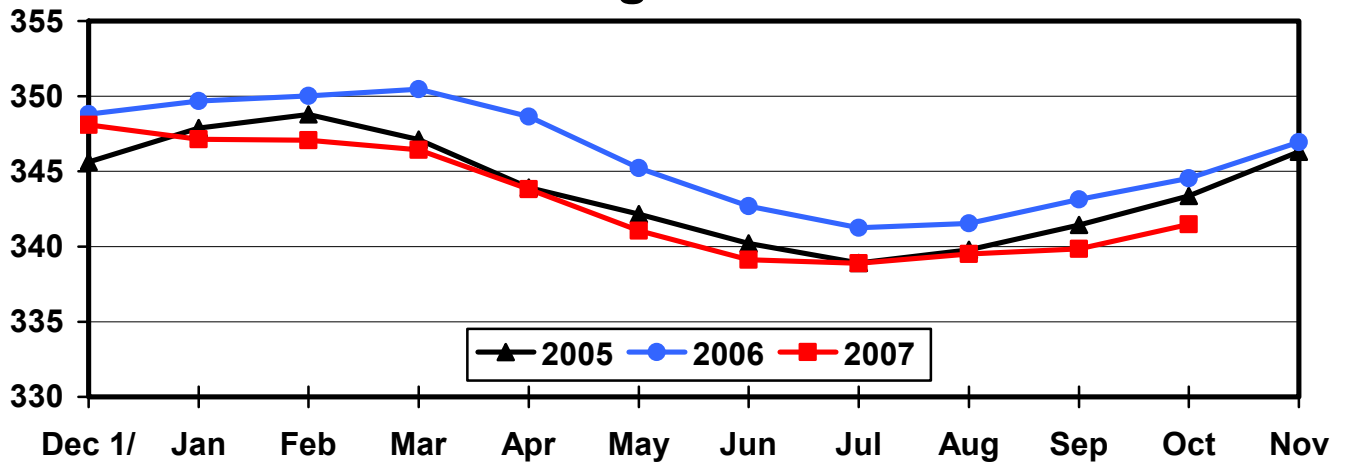
Month	Total Eggs		Table Eggs		Hatching Eggs	
	2006	2007	2006	2007	2006	2007
	<i>Million Eggs</i>	<i>Million Eggs</i>	<i>Million Eggs</i>	<i>Million Eggs</i>	<i>Million Eggs</i>	<i>Million Eggs</i>
Dec ²	7,793	7,777	6,697	6,683	1,096	1,094
Jan	7,727	7,637	6,622	6,535	1,105	1,102
Feb	6,980	6,916	5,983	5,918	997	998
Mar	7,843	7,769	6,732	6,646	1,112	1,123
Apr	7,543	7,435	6,468	6,341	1,075	1,094
May	7,637	7,591	6,520	6,449	1,117	1,143
Jun	7,401	7,355	6,336	6,243	1,066	1,113
Jul	7,645	7,573	6,550	6,435	1,095	1,138
Aug	7,647	7,569	6,557	6,438	1,090	1,131
Sep	7,430	7,370	6,379	6,273	1,051	1,097
Oct	7,678	7,695	6,600	6,565	1,078	1,130
Nov	7,549		6,506		1,043	
During Year	90,877		77,954		12,927	

¹ Totals may not add due to rounding.

² December preceding year.

Average Number of Layers United States, 2005 - 2007 During the Month

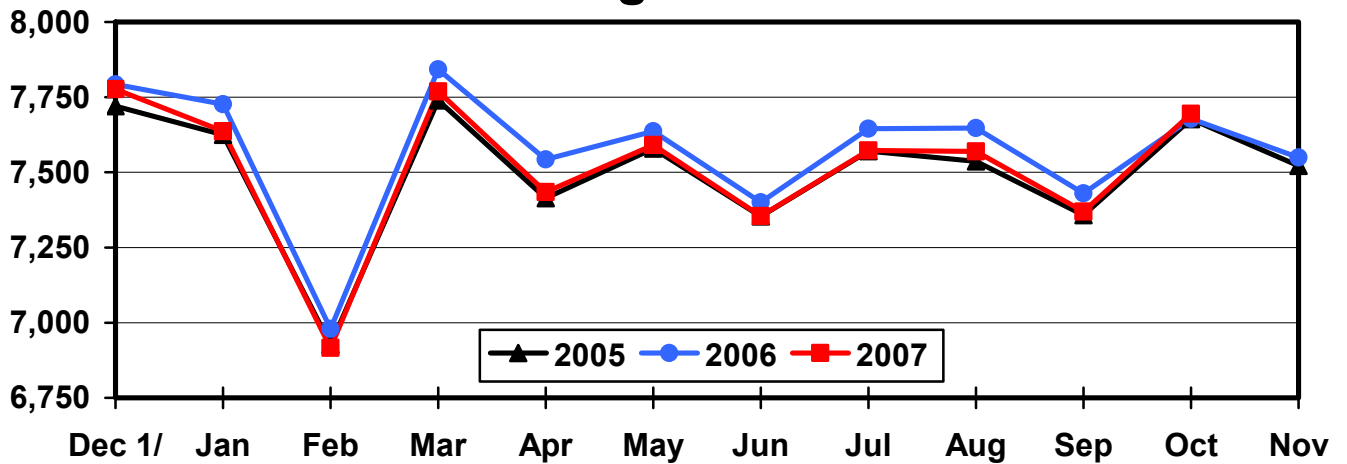
Million Layers



1/ Previous Year

All Egg Production United States, 2005 - 2007 During the Month

Million Eggs



1/ Previous Year

**Layers and Eggs: Layers on Hand and Eggs Produced by Type,
and Forced Molt, United States, September-October 2006-07¹**

Item	Unit	2006	2007	2007 as % of 2006
Layers During Sep	1,000			
All Layers		343,147	339,841	99
Table Egg Type		286,331	281,035	98
Hatching Egg Type		56,816	58,806	104
Broiler-Type Hatching		54,097	56,061	104
Egg-Type Hatching		2,719	2,745	101
Eggs per 100 Layers During Sep	Number			
All Layers		2,165	2,169	100
Table Egg Type		2,228	2,232	100
Hatching Egg Type		1,850	1,865	101
Broiler-Type Hatching		1,825	1,843	101
Egg-Type Hatching		2,354	2,332	99
Eggs Produced During Sep	Million			
All Layers		7,430	7,370	99
Table Egg Type		6,379	6,273	98
Hatching Egg Type		1,051	1,097	104
Broiler-Type Hatching		987	1,033	105
Egg-Type Hatching		64	64	100
Layers on Oct 1	1,000			
All Layers		343,946	340,179	99
Table Egg Type		287,533	281,255	98
Hatching Egg Type		56,413	58,924	104
Broiler-Type Hatching		53,710	56,169	105
Egg-Type Hatching		2,703	2,755	102
Eggs per 100 Layers on Oct 1	Number			
All Layers		71.6	72.7	102
Table Egg Type		73.6	74.9	102
Hatching Egg Type		61.9	62.1	100
Broiler-Type Hatching		61.0	61.3	100
Egg-Type Hatching		79.5	78.9	99
Forced Molt Layers on Oct 1	Percent			
Percent Being Molted		4.3	3.5	81
Percent with Molt Completed		25.8	23.6	91
Layers Sold for Slaughter During Sep	1,000	12,908	13,024	101
Layers Rendered, Died, Destroyed, Composted or Disappeared For Any Reason During Sep	1,000	6,793	6,760	100
Pullets on Oct 1	1,000	98,960	101,004	102
Pullets Added During Sep ²	1,000	22,273	22,528	101

¹ Totals may not add due to rounding.

² Pullet chicks less than 3 days old added to pullet flocks.

**Layers and Eggs: Layers on Hand and Eggs Produced by Type,
and Forced Molt, United States, October-November 2006-07¹**

Item	Unit	2006	2007	2007 as % of 2006
Layers During Oct	1,000			
All Layers		344,538	341,490	99
Table Egg Type		288,029	282,501	98
Hatching Egg Type		56,509	58,989	104
Broiler-Type Hatching		53,758	56,174	104
Egg-Type Hatching		2,751	2,815	102
Eggs per 100 Layers During Oct	Number			
All Layers		2,228	2,253	101
Table Egg Type		2,291	2,324	101
Hatching Egg Type		1,908	1,916	100
Broiler-Type Hatching		1,881	1,892	101
Egg-Type Hatching		2,435	2,380	98
Eggs Produced During Oct	Million			
All Layers		7,678	7,695	100
Table Egg Type		6,600	6,565	99
Hatching Egg Type		1,078	1,130	105
Broiler-Type Hatching		1,011	1,063	105
Egg-Type Hatching		67	67	100
Layers on Nov 1	1,000			
All Layers		345,090	342,756	99
Table Egg Type		288,503	283,726	98
Hatching Egg Type		56,587	59,030	104
Broiler-Type Hatching		53,793	56,165	104
Egg-Type Hatching		2,794	2,865	103
Eggs per 100 Layers on Nov 1	Number			
All Layers		72.1	72.6	101
Table Egg Type		74.2	74.9	101
Hatching Egg Type		61.2	61.1	100
Broiler-Type Hatching		60.4	60.3	100
Egg-Type Hatching		76.7	75.9	99
Forced Molt Layers on Nov 1	Percent			
Percent Being Molted		3.0	2.6	87
Percent with Molt Completed		26.0	23.8	92
Layers Sold for Slaughter During Oct	1,000	11,785	12,160	103
Layers Rendered, Died, Destroyed, Composted or Disappeared For Any Reason During Oct	1,000	7,213	6,320	88
Pullets on Nov 1	1,000	98,364	99,612	101
Pullets Added During Oct ²	1,000	20,901	20,256	97

¹ Totals may not add due to rounding.

² Pullet chicks less than 3 days old added to pullet flocks.

**Layers and Eggs: Layers on Hand and Eggs Produced by State
and United States, During September 2006-07**

State	Table Egg Layers in Flocks 30,000 and Above		All Layers ¹		Eggs per 100 for All Layers ¹	
	2006	2007	2006	2007	2006	2007
	<i>1,000</i>	<i>1,000</i>	<i>1,000</i>	<i>1,000</i>	<i>Number</i>	<i>Number</i>
AL	1,660	1,182	8,748	9,082	1,875	1,861
AR	4,489	4,241	13,964	13,900	1,905	1,928
CA	18,540	18,716	19,006	18,945	2,157	2,117
CO	3,356	3,213	3,851	3,755	2,389	2,210
CT	2,605	2,624	2,662	2,879	2,367	2,327
FL	10,220	10,160	10,616	10,656	2,195	2,187
GA	9,607	9,433	19,373	19,198	2,039	2,016
HI	411	350	427	366	1,780	1,749
IL	4,832	4,891	5,076	5,115	2,266	2,268
IN	23,670	23,460	24,373	24,127	2,220	2,205
IA	50,630	51,405	51,370	52,346	2,178	2,222
ME	3,923	3,743	3,994	3,822	2,103	2,093
MD	2,582	2,626	2,708	2,759	2,253	2,066
MI	8,870	8,539	9,121	8,789	2,237	2,355
MN	10,373	9,870	10,838	10,334	2,178	2,235
MS	1,633	1,519	6,257	6,230	1,998	1,958
MO	6,180	5,646	7,267	6,821	2,202	2,184
NE	11,481	10,526	11,556	10,601	2,241	2,302
NY	3,793	3,688	4,051	4,208	2,320	2,353
NC	3,576	4,731	11,157	12,324	1,954	2,053
OH	27,479	25,479	28,003	26,055	2,196	2,226
OR	2,496	2,327	2,661	2,490	2,405	2,490
PA	21,281	20,397	23,180	22,090	2,338	2,313
SC	3,647	3,395	4,865	4,696	2,097	2,044
SD	3,144	3,098	3,244	3,198	2,158	2,220
TX	14,374	14,219	18,723	18,850	2,217	2,101
VA	1,337	1,392	3,201	3,257	2,031	2,026
WA	4,714	4,631	4,775	4,692	2,262	2,153
WI	4,012	4,376	4,515	4,941	2,259	2,287
Oth Sts ²	15,632	15,125	23,565	23,315	2,122	2,175
US	280,547	275,202	343,147	339,841	2,165	2,169

¹ Includes all layers and eggs produced in both table egg and hatching egg flocks regardless of size.

² Not published separately to avoid disclosing data for individual operations.

**Layers and Eggs: Layers on Hand and Eggs Produced by State
and United States, During October 2006-07**

State	Table Egg Layers in Flocks 30,000 and Above		All Layers ¹		Eggs per 100 for All Layers ¹	
	2006	2007	2006	2007	2006	2007
	<i>1,000</i>	<i>1,000</i>	<i>1,000</i>	<i>1,000</i>	<i>Number</i>	<i>Number</i>
AL	1,748	1,277	8,779	9,352	1,936	1,946
AR	4,554	4,125	13,888	14,033	1,966	1,967
CA	18,593	18,659	19,060	18,853	2,225	2,207
CO	3,309	3,291	3,790	3,830	2,427	2,298
CT	2,665	2,849	5,725	2,904	2,422	2,342
FL	10,307	10,312	10,703	10,783	2,261	2,272
GA	9,609	9,548	19,345	19,252	2,109	2,130
HI	403	349	419	365	1,814	1,836
IL	4,809	4,941	5,053	5,169	2,395	2,515
IN	23,633	23,638	24,322	24,313	2,286	2,307
IA	51,217	51,751	51,981	52,686	2,247	2,264
ME	3,897	3,797	3,967	3,876	2,117	2,141
MD	2,608	2,615	2,752	2,758	2,253	2,357
MI	8,866	8,700	9,117	8,950	2,347	2,536
MN	10,657	9,877	11,118	10,364	2,204	2,325
MS	1,634	1,532	6,242	6,232	2,051	2,038
MO	6,260	5,650	7,348	6,781	2,286	2,301
NE	11,531	10,254	11,606	10,329	2,292	2,372
NY	3,886	3,723	4,137	4,242	2,272	2,428
NC	3,688	4,915	11,205	12,467	2,008	2,134
OH	27,058	25,612	27,566	26,204	2,231	2,274
OR	2,561	2,430	2,741	2,601	2,517	2,461
PA	21,626	20,275	23,497	21,973	2,388	2,421
SC	3,620	3,439	4,829	4,697	2,236	2,193
SD	3,110	3,095	3,210	3,195	2,243	2,285
TX	14,465	14,501	18,798	19,130	2,325	2,253
VA	1,331	1,424	3,205	3,312	2,153	2,053
WA	4,755	4,642	4,816	4,703	2,326	2,254
WI	4,181	4,371	4,699	4,955	2,192	2,301
Oth Sts ²	15,664	15,076	23,620	23,181	2,193	2,239
US	282,245	276,668	344,538	341,490	2,228	2,253

¹ Includes all layers and eggs produced in both table egg and hatching egg flocks regardless of size.

² Not published separately to avoid disclosing data for individual operations.

**Egg Production: By Type, State, and United States,
September 2006-07 ¹**

State	Total Production		Table Eggs ²		Hatching Eggs ²	
	2006	2007	2006	2007	2006	2007
	<i>Million Eggs</i>	<i>Million Eggs</i>	<i>Million Eggs</i>	<i>Million Eggs</i>	<i>Million Eggs</i>	<i>Million Eggs</i>
AL	164	169	37	26	127	143
AR	266	268	99	97	167	171
CA	410	401				
CO	92	83				
CT	63	67				
FL	233	233	226	224	7	9
GA	395	387	213	203	182	184
HI	7.6	6.4	7.6	6.4	0	0
IL	115	116	111	113	4	3
IN	541	532	529	520	12	12
IA	1,119	1,163	1,107	1,148	12	15
ME	84	80				
MD	61	57	59	55	2	2
MI	204	207				
MN	236	231	228	223	8	8
MS	125	122	37	36	88	86
MO	160	149				
NE	259	244	259	244	0	0
NY	94	99				
NC	218	253	85	113	133	140
OH	615	580				
OR	64	62	62	60	2	2
PA	542	511	522	492	20	19
SC	102	96	81	74	21	22
SD	70	71	70	71	0	0
TX	415	396				
VA	65	66	32	32	33	34
WA	108	101				
WI	102	113				
Oth Sts ³	500	507	378	377	122	130
US	7,430	7,370	6,379	6,273	1,051	1,097

¹ Totals may not add due to rounding.

² Data by type of flock not shown for some States to avoid disclosing individual operations, data included in US totals.

³ Not published separately to avoid disclosing data for individual operations.

**Egg Production: By Type, State, and United States,
October 2006-07¹**

State	Total Production		Table Eggs ²		Hatching Eggs ²	
	2006	2007	2006	2007	2006	2007
	<i>Million Eggs</i>	<i>Million Eggs</i>	<i>Million Eggs</i>	<i>Million Eggs</i>	<i>Million Eggs</i>	<i>Million Eggs</i>
AL	170	182	40	31	130	151
AR	273	276	104	97	169	179
CA	424	416				
CO	92	88				
CT	66	68				
FL	242	245	235	236	7	9
GA	408	410	219	221	189	189
HI	7.6	6.7	7.6	6.7	0	0
IL	121	130	117	126	4	4
IN	556	561	544	549	12	12
IA	1,168	1,193	1,155	1,177	13	16
ME	84	83				
MD	62	65	60	63	2	2
MI	214	227				
MN	245	241	237	232	8	9
MS	128	127	39	38	89	89
MO	168	156				
NE	266	245	266	245	0	0
NY	94	103				
NC	225	266	88	124	137	142
OH	615	596				
OR	69	64	67	62	2	2
PA	561	532	541	513	20	19
SC	108	103	86	80	22	23
SD	72	73	72	73	0	0
TX	437	431				
VA	69	68	35	33	34	35
WA	112	106				
WI	103	114				
Oth Sts ³	518	519	392	386	126	133
US	7,678	7,695	6,600	6,565	1,078	1,130

¹ Totals may not add due to rounding.

² Data by type of flock not shown for some States to avoid disclosing individual operations, data included in US totals.

³ Not published separately to avoid disclosing data for individual operations.

**Forced Molt: Percent of All Layers by Month,
United States, 2006-07¹**

Month	Percent Being Molted		Percent with Molt Completed	
	2006	2007	2006	2007
	<i>Percent</i>	<i>Percent</i>	<i>Percent</i>	<i>Percent</i>
Jan	4.3	4.4	23.0	24.5
Feb	5.2	3.4	23.7	24.4
Mar	4.0	2.9	24.4	24.1
Apr	2.3	2.8	24.9	23.4
May	5.4	5.4	23.6	22.2
Jun	4.7	3.6	24.7	24.0
Jul	3.5	4.0	25.6	24.1
Aug	4.2	3.4	25.2	23.5
Sep	3.4	3.5	25.9	24.0
Oct	4.3	3.5	25.8	23.6
Nov	3.0	2.6	26.0	23.8
Dec	2.2		26.6	

¹ As of first of month.

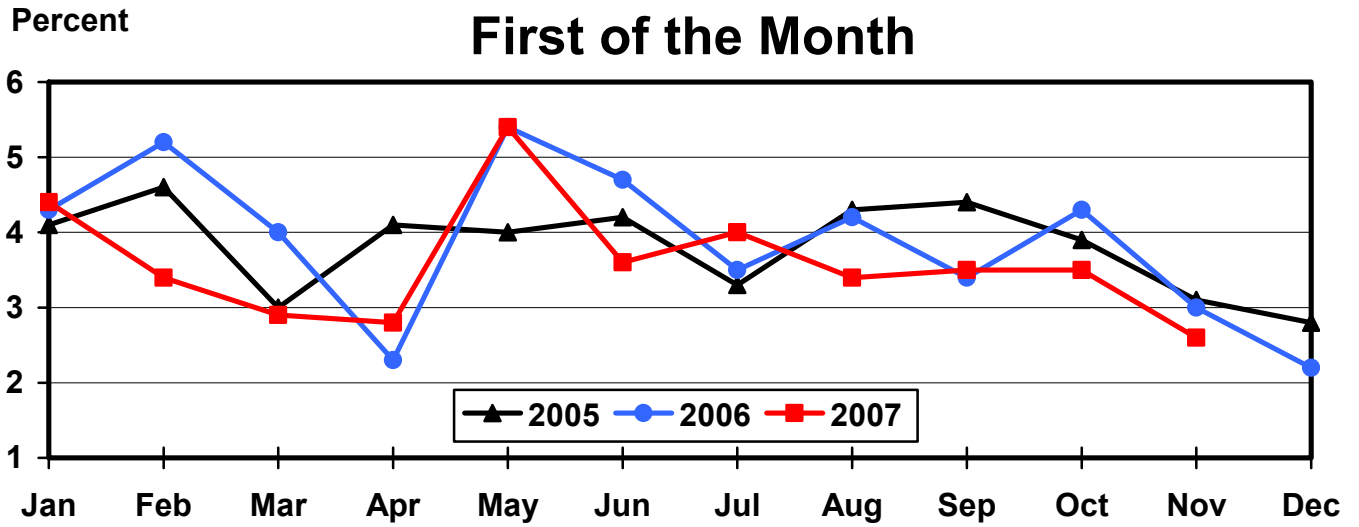
**Forced Molt: Percent of All Layers by State
and United States, November 2006-07¹**

State	Percent Being Molted		Percent with Molt Completed	
	2006	2007	2006	2007
	<i>Percent</i>	<i>Percent</i>	<i>Percent</i>	<i>Percent</i>
AL	1.0	0.5	5.0	6.0
AR	0.0	1.0	15.5	12.5
CA	3.0	4.0	36.5	32.0
CO	4.0	4.0	21.5	21.0
CT	0.0	6.0	16.0	10.0
FL	6.0	2.5	39.0	38.5
GA	2.5	1.5	13.5	16.0
HI	9.5	9.0	65.5	56.5
IL	1.5	2.5	32.0	39.0
IN	2.5	2.0	33.0	33.5
IA	3.0	4.0	35.5	37.0
ME	0.0	0.0	0.0	0.0
MD	6.0	4.5	39.0	18.5
MI	4.5	0.5	25.0	15.5
MN	3.5	1.0	33.5	30.0
MS	1.0	1.0	13.0	10.0
MO	1.0	6.5	22.0	12.5
NE	4.0	0.0	23.0	15.0
NY	2.0	3.5	8.0	7.0
NC	0.0	0.0	10.0	8.0
OH	6.5	2.5	22.0	18.0
OR	7.5	3.5	31.0	34.0
PA	3.5	2.5	22.5	13.0
SC	7.5	6.0	36.5	27.0
SD	5.0	5.0	22.0	19.0
TX	2.0	0.5	25.5	29.0
VA	0.0	2.5	20.5	23.5
WA	4.5	8.0	43.5	40.5
WI	2.5	8.5	29.5	34.5
Oth Sts ²	1.8	3.3	26.2	22.7
US	3.0	2.6	26.0	23.8

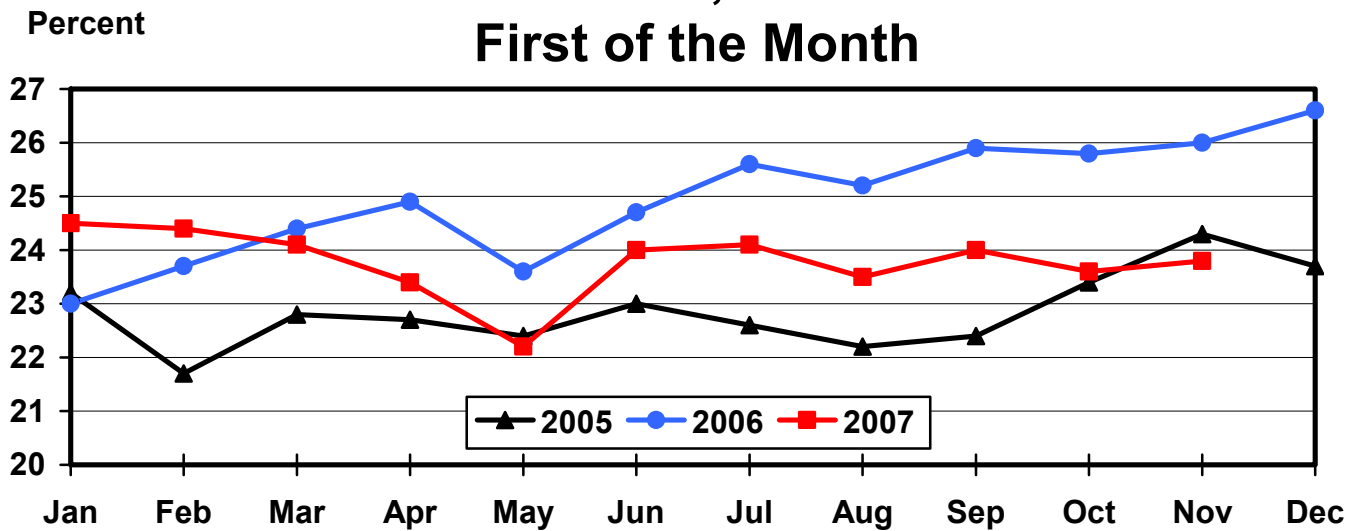
¹ As of first of month.

² Not published separately to avoid disclosing data for individual operations.

All Layers: Percent Being Molted United States, 2005 - 2007 First of the Month



All Layers: Percent Molt Completed United States, 2005 - 2007 First of the Month



**Hatchery Production: Eggs in Incubators, Chicks Hatched,
and Placements by Type, United States, October-November 2006-07**

Item	2006	2007	2007 as % of 2006
	<i>1,000</i>	<i>1,000</i>	<i>Percent</i>
Egg-Type			
Eggs in Incubators on Nov 1	31,562	34,450	109
Chicks Hatched During Oct	36,162	35,767	99
Chicks Hatched Jan thru Oct	361,331	375,871	104
Pullets Hatched During Oct for Intended Placements in Hatchery Supply Flocks 7-18 Months Earlier ¹	222 2,850	184 2,936	83 103
Broiler-Type			
Eggs in Incubators on Nov 1	607,694	633,577	104
Chicks Hatched During Oct	772,942	795,371	103
Chicks Hatched Jan thru Oct	7,901,081	8,009,059	101
Pullets Hatched During Oct for Intended Placements in Hatchery Supply Flocks 7-15 Months Earlier ²	6,744 64,057	6,970 63,909	103 100

¹ 2007 includes pullet chicks hatched Apr 2006 through Mar 2007.

² 2007 includes pullet chicks hatched Jul 2006 through Mar 2007.

**Egg-Type Eggs in Incubators: By Region and United States,
November 1, 2006-07**

Region	2006	2007	2007 as % of 2006
	<i>1,000</i>	<i>1,000</i>	<i>Percent</i>
North Atlantic	5,826	5,599	96
E North Central	6,429	6,882	107
W North Central	7,427	7,817	105
South Atlantic	3,938	3,943	100
South Central	4,189	4,825	115
West	3,753	5,384	143
US	31,562	34,450	109

Regions:

North Atlantic = CT, ME, MA, NH, NJ, NY, PA, RI, VT.

E North Central = IL, IN, MI, OH, WI.

W North Central = IA, KS, MN, MO, NE, ND, SD.

South Atlantic = DE, FL, GA, MD, NC, SC, VA, WV.

South Central = AL, AR, KY, LA, MS, OK, TN, TX.

West = AK, AZ, CA, CO, HI, ID, MT, NM, NV, OR, UT, WA, WY.

**Egg-Type Chicks Hatched: By State and United States,
October 2006-07**

State	During October			Jan-Oct		
	2006	2007	2007 as % of 2006	2006	2007	2007 as % of 2006
	<i>1,000</i>	<i>1,000</i>	<i>Percent</i>	<i>1,000</i>	<i>1,000</i>	<i>Percent</i>
GA	2,319	2,151	93	22,605	22,185	98
IN	4,901	5,302	108	49,803	53,542	108
IA	7,410	6,748	91	67,500	73,608	109
MN	980	1,125	115	9,634	10,305	107
PA	4,556	4,165	91	44,907	45,469	101
Oth Sts ¹	15,996	16,276	102	166,882	170,762	102
US	36,162	35,767	99	361,331	375,871	104

¹ Not published separately to avoid disclosing data for individual operations.

Egg-Type Chicks Hatched: By Month, United States, 2006-07

Month	By Months			Cumulative		
	2006	2007	2007 as % of 2006	2006	2007	2007 as % of 2006
	<i>1,000</i>	<i>1,000</i>	<i>Percent</i>	<i>1,000</i>	<i>1,000</i>	<i>Percent</i>
Jan	35,159	36,926	105	35,159	36,926	105
Feb	33,409	36,766	110	68,568	73,692	107
Mar	38,805	40,537	104	107,373	114,229	106
Apr	35,435	39,704	112	142,808	153,933	108
May	39,744	38,498	97	182,552	192,431	105
Jun	37,406	40,005	107	219,958	232,436	106
Jul	32,727	35,560	109	252,685	267,996	106
Aug	35,611	36,838	103	288,296	304,834	106
Sep	36,873	35,270	96	325,169	340,104	105
Oct	36,162	35,767	99	361,331	375,871	104
Nov	31,554			392,885		
Dec	33,183			426,068		

**Intended Placements: Egg-Type Pullet Chicks for Hatchery Supply
Flocks by Month and Total, United States, 2006-07¹**

Month	Pullet Chicks Hatched		2007 as % of 2006	Cumulative Potential Plcmts Relative to Current Supply Flocks 7-18 Months Earlier ²	
	2006	2007		2007	2008
	<i>1,000</i>	<i>1,000</i>	<i>Percent</i>	<i>1,000</i>	<i>1,000</i>
Jan	223	265	119	2,870	3,008
Feb	200	166	83	2,947	2,872
Mar	261	316	121	2,970	2,866
Apr	254	274	108	2,855	2,906
May	241	191	79	2,889	2,868
Jun	198	300	152	2,915	
Jul	319	183	57	2,873	
Aug	284	278	98	2,915	
Sep	260	300	115	2,881	
Oct	222	184	83	2,936	
Nov	206			2,956	
Dec	205			2,906	
Total	2,873				

¹ Reported by leading breeders. Coverage may not be 100 percent. Includes expected pullet chicks from eggs sold during the preceding month at the rate of 125 pullet chicks per 30 dozen case of eggs.

² For October 2007, includes breeder pullet chicks hatched Apr 2006 through Mar 2007. The 7-18 months represent the first laying cycle. Molting and additional laying cycles will increase the cumulative potential placements.

**Broiler-Type Eggs in Incubators: By Region
and United States, November 1, 2006-07**

Region	2006	2007	2007 as % of 2006
	<i>1,000</i>	<i>1,000</i>	<i>Percent</i>
North Atlantic	10,855	12,384	114
E North Central	9,054	11,969	132
W North Central	25,094	26,993	108
South Atlantic	230,867	239,580	104
South Central	308,837	318,708	103
West	22,987	23,943	104
US	607,694	633,577	104

**Broiler-Type Chicks Hatched: By State
and United States, October 2006-07**

State	During October			Jan-Oct		
	2006	2007	2007 as % of 2006	2006	2007	2007 as % of 2006
	<i>1,000</i>	<i>1,000</i>	<i>Percent</i>	<i>1,000</i>	<i>1,000</i>	<i>Percent</i>
AL	112,065	114,267	102	1,135,929	1,128,003	99
AR	97,079	100,360	103	1,022,216	1,017,297	100
DE	14,077	14,901	106	140,031	147,739	106
FL	5,051	5,069	100	49,225	49,474	101
GA	123,370	124,959	101	1,238,484	1,268,814	102
KY	26,201	27,266	104	257,157	274,984	107
LA	14,253	14,693	103	144,852	141,404	98
MD	31,403	31,281	100	313,763	312,091	99
MS	62,867	65,744	105	659,379	678,989	103
NC	66,356	70,218	106	669,305	699,070	104
OK	23,452	23,950	102	228,754	237,603	104
PA	14,322	15,028	105	140,852	141,824	101
SC	19,426	19,853	102	188,309	195,250	104
TX	53,685	52,666	98	544,881	539,133	99
VA	22,665	22,525	99	231,643	229,219	99
CA, MO, TN, & WV	67,035	70,727	106	708,689	713,843	101
19 Sts ¹	753,307	773,507	103	7,673,469	7,774,737	101
Oth Sts ²	19,635	21,864	111	227,612	234,322	103
US	772,942	795,371	103	7,901,081	8,009,059	101

¹ States in the weekly hatchery production estimating program.

² Not published separately to avoid disclosing data for individual operations.

Broiler-Type Chicks Hatched: By Month, United States, 2006-07

Month	By Months			Cumulative		
	2006	2007	2007 as % of 2006	2006	2007	2007 as % of 2006
	<i>1,000</i>	<i>1,000</i>	<i>Percent</i>	<i>1,000</i>	<i>1,000</i>	<i>Percent</i>
Jan	804,801	797,066	99	804,801	797,066	99
Feb	733,425	723,753	99	1,538,226	1,520,819	99
Mar	817,842	810,732	99	2,356,068	2,331,551	99
Apr	787,457	800,524	102	3,143,525	3,132,075	100
May	812,137	837,386	103	3,955,662	3,969,461	100
Jun	788,652	810,419	103	4,744,314	4,779,880	101
Jul	801,537	820,865	102	5,545,851	5,600,745	101
Aug	810,030	828,788	102	6,355,881	6,429,533	101
Sep	772,258	784,155	102	7,128,139	7,213,688	101
Oct	772,942	795,371	103	7,901,081	8,009,059	101
Nov	729,946			8,631,027		
Dec	796,523			9,427,550		

**Intended Placements: Broiler-Type Pullet Chicks for Hatchery
Supply Flocks by Month and Total, 2006-07 ¹**

Month	Pullet Chicks Hatched		2007 as % of 2006	Cumulative Potential Plcmts Relative to Current Supply Flocks 7-15 Months Earlier ²	
	2006	2007		2007	2008
	<i>1,000</i>	<i>1,000</i>	<i>Percent</i>	<i>1,000</i>	<i>1,000</i>
US Place- ments					
Jan	6,825	7,015	103	64,544	65,333
Feb	7,593	7,071	93	64,056	65,407
Mar	7,012	7,135	102	64,389	65,581
Apr	6,593	6,692	102	64,340	65,732
May	7,531	8,083	107	64,259	65,687
Jun	7,636	7,799	102	64,284	
Jul	6,456	6,818	106	64,448	
Aug	7,631	7,792	102	64,870	
Sep	7,063	7,327	104	64,410	
Oct	6,744	6,970	103	63,909	
Nov	7,618			64,145	
Dec	7,176			64,597	
Annual Total	85,878				
Total Place- ments ³					
Jan	8,018	8,772	109		
Feb	9,026	8,811	98		
Mar	8,415	9,025	107		
Apr	7,558	8,358	111		
May	8,930	9,780	110		
Jun	9,144	9,435	103		
Jul	7,845	8,370	107		
Aug	9,170	9,466	103		
Sep	8,742	9,070	104		
Oct	8,028	9,076	113		
Nov	9,550				
Dec	8,700				
Annual Total	103,126				

¹ Reported by leading breeders. Coverage may not be 100 percent. Includes expected pullet chicks from eggs sold during the preceding month at the rate of 125 pullet chicks per 30 dozen case of eggs.

² For Oct 2007, includes breeder pullet chicks hatched Jul 2006 through Mar 2007.

³ U.S. production of intended placements worldwide.

Reliability of Chicken and Eggs Estimates

Survey Procedures: Primary data for the "**Chickens and Eggs**" report are from weekly and/or monthly questionnaires sent to producers. An attempt is made to collect information for layer and egg estimates from each known contractor and independent producer who has at least 30,000 table egg layers, flocks of hatchery supply layers, or pullet only operations with at least 500 pullets. Coverage for operations with less than 30,000 table egg layers are estimated each month based on data reported in December. Approximately 650 contractors, independent egg producers, and pullet only operations are contacted each month. All known hatcheries, approximately 300, are contacted for information on a weekly and/or monthly basis.

Estimating Procedures: Sound statistical methodology is employed to derive estimates from the reported data. All data are checked for unusual values. Data from each operation are compared to their own past operating profile and to trends from similar operations. Data for missing operations are estimated based on similar operations or historical data. NASS field offices prepare these estimates by using a combination of survey indications and historic trends. Individual State estimates are reviewed by the Agricultural Statistics Board for reasonableness. Individual hatchery data are summed to State, regional, and U.S. totals.

For chicken hatcheries, chicks hatched consist of all chicks of domesticated breeds including males and chicks destined for hatchery supply flocks and research purposes. Eggs set are eggs in incubators for the purpose of hatching. The relationship of egg-type chicks hatched to chicken inventory and poultry marketings are carefully monitored. The disposition of egg-type chicks hatched prior to placement into the laying flock can vary significantly, which can make comparisons to changes in layer inventory inconsistent over time. Broiler chicks placed are specifically placed on feed for meat production. Intended placement data reported by leading breeders include pullet chicks expected from eggs sold the preceding month. The breeders in this report account for a large percentage of replacement pullets for hatchery supply flocks. Production of replacement pullets by these breeders indicates the number of pullets available to hatchery supply flocks several months before the pullets will actually move into the flocks. "Hatchery Supply Flocks" include all generations of layers which could lay eggs to supply a hatchery. This includes the generations of parents, grandparents, great-grandparents, pedigree, etc. Also included are research flocks, vaccine flocks, and specific pathogen-free flocks. The broiler cumulative potential placements are a moving total of the intended placements 7-15 months earlier. The egg-type cumulative potential placements of 7-18 months represent the first laying cycle. Molting and additional laying cycles will increase the cumulative potential placements of egg-type hatching flocks.

Revision Policy: The previous month's estimates are subject to revision if late reports or corrected data indicates a different level. Additionally, revisions after the monthly report will be made at the end of the marketing year and published in the annual reports of "**Chickens and Eggs Summary**" and "**Hatchery Production**".

Reliability: Estimates are based on a census of all known contractors and independent producers who have at least 30,000 table egg layers, flocks of hatchery supply layers, pullet only operations with at least 500 pullets, or operating hatcheries and therefore, have no sampling error. However, estimates are subject to errors such as omission, duplication, and mistakes in reporting, recording, and processing the data. While these errors cannot be measured directly, they are minimized through strict quality controls in the data collection process and a careful review of all reported data for consistency and reasonableness.

Information Contacts

Listed below are the commodity specialists in the Livestock Branch of the National Agricultural Statistics Service to contact for additional information.

Dan Kerestes, Chief, Livestock Branch	(202) 720-3570
Darin Jantzi, Head, Poultry and Specialty Commodities Section	(202) 720-3570
David Colwell - Cold Storage	(202) 720-8784
Fleming Gibson - Egg Products, Poultry Slaughter, Catfish Processing, Mink	(202) 690-3237
Sharyn Lavender - Broiler Hatchery, Chicken Hatchery, Honey	(202) 720-3244
Kim Linonis - Layers, Eggs	(202) 690-8632
Toby Paterson - Catfish Production, Trout Production, Census of Aquaculture, Turkey Hatchery, Turkeys Raised	(202) 720-0585

ACCESS TO REPORTS!!

For your convenience, there are several ways to obtain NASS reports, data products, and services:

INTERNET ACCESS

All NASS reports are available free of charge on the worldwide Internet. For access, connect to the Internet and go to the NASS Home Page at: **www.nass.usda.gov**.

E-MAIL SUBSCRIPTION

All NASS reports are available by subscription free of charge direct to your e-mail address. Starting with the NASS Home Page at **www.nass.usda.gov**, under the right navigation, *Receive reports by Email*, click on **National** or **State**. Follow the instructions on the screen.

PRINTED REPORTS OR DATA PRODUCTS

CALL OUR TOLL-FREE ORDER DESK: 800-999-6779 (U.S. and Canada)
Other areas, please call 703-605-6220 FAX: 703-605-6900
(Visa, MasterCard, check, or money order acceptable for payment.)

ASSISTANCE

For **assistance** with general agricultural statistics or further information about NASS or its products or services, contact the **Agricultural Statistics Hotline** at **800-727-9540**, 7:30 a.m. to 4:00 p.m. ET, or e-mail: **nass@nass.usda.gov**.

The U.S. Department of Agriculture (USDA) prohibits discrimination in all its programs and activities on the basis of race, color, national origin, age, disability, and where applicable, sex, marital status, familial status, parental status, religion, sexual orientation, genetic information, political beliefs, reprisal, or because all or a part of an individual's income is derived from any public assistance program. (Not all prohibited bases apply to all programs.) Persons with disabilities who require alternative means for communication of program information (Braille, large print, audiotape, etc.) should contact USDA's TARGET Center at (202) 720-2600 (voice and TDD).

To file a complaint of discrimination, write to USDA, Director, Office of Civil Rights, 1400 Independence Avenue, S.W., Washington, D.C. 20250-9410, or call (800) 795-3272 (voice) or (202) 720-6382 (TDD). USDA is an equal opportunity provider and employer.