

# Chickens And Eggs

---

Released December 21, 2007, by the National Agricultural Statistics Service (NASS), Agricultural Statistics Board, U.S. Department of Agriculture. For information on "Layers and Eggs" call Kim Linonis at (202) 690-8632, for "Chicks Hatched" call Sharyn Lavender at (202) 720-3244, office hours 7:30 a.m. to 4:00 p.m. ET.

## **November Egg Production Down 1 Percent**

U.S. egg production totaled 7.51 billion during November 2007, down 1 percent from last year. Production included 6.42 billion table eggs, and 1.09 billion hatching eggs, of which 1.02 billion were broiler-type and 66 million were egg-type. The total number of layers during November 2007 averaged 343 million, down 1 percent from last year. November egg production per 100 layers was 2,190 eggs, up 1 percent from November 2006.

All layers in the U.S. on December 1, 2007 totaled 343 million, down 2 percent from last year. The 343 million layers consisted of 284 million layers producing table or market type eggs, 56.0 million layers producing broiler-type hatching eggs, and 2.83 million layers producing egg-type hatching eggs. Rate of lay per day on December 1, 2007, averaged 73.1 eggs per 100 layers, up slightly from December 1, 2006.

## **Egg-Type Chicks Hatched Up 8 Percent**

Egg-type chicks hatched during November 2007 totaled 34.0 million, up 8 percent from November 2006. Eggs in incubators totaled 35.9 million on December 1, 2007, up 7 percent from a year ago.

Domestic placements of egg-type pullet chicks for future hatchery supply flocks by leading breeders totaled 281 thousand during November 2007, up 36 percent from November 2006.

## **Broiler-Type Chicks Hatched Up 4 Percent**

Broiler-type chicks hatched during November 2007 totaled 761 million, up 4 percent from November 2006. Eggs in incubators totaled 678 million on December 1, 2007, up 4 percent from a year earlier.

Leading breeders placed 7.44 million broiler-type pullet chicks for future domestic hatchery supply flocks during November 2007, down 2 percent from November 2006.



## Contents

|   | <b>Page</b> |
|---|-------------|
| U.S. Average Number of Layers on Hand and Egg Production .....                | 1           |
| U.S. Layers on Hand and Eggs Produced by Type, Forced Molt, and Pullets ..... | 3           |
| Layers on Hand and Eggs Produced by State.....                                | 5           |
| Egg Production by Type and State.....   | 7           |
| Forced Molt .....   | 9           |
| Egg-Type Hatchery .....   | 11          |
| Egg-Type Intended Placements .....  | 13          |
| Broiler-Type Hatchery .....   | 13          |
| Broiler-Type Intended Placements.....   | 15          |
| Procedures and Reliability .....  | 16          |
| Information Contacts .....  | 16          |

**All Layers: Average Number on Hand During the Month,  
United States, 2005-07**

| Month            | 2005                | 2006                | 2007                |
|------------------|---------------------|---------------------|---------------------|
|                  | <i>1,000 Layers</i> | <i>1,000 Layers</i> | <i>1,000 Layers</i> |
| Dec <sup>1</sup> | 345,615             | 348,810             | 348,098             |
| Jan              | 347,874             | 349,677             | 347,133             |
| Feb              | 348,784             | 350,018             | 347,079             |
| Mar              | 347,120             | 350,470             | 346,437             |
| Apr              | 343,927             | 348,643             | 343,814             |
| May              | 342,162             | 345,223             | 341,052             |
| Jun              | 340,200             | 342,685             | 339,130             |
| Jul              | 338,917             | 341,252             | 338,892             |
| Aug              | 339,777             | 341,540             | 339,508             |
| Sep              | 341,433             | 343,147             | 339,841             |
| Oct <sup>2</sup> | 343,381             | 344,538             | 341,494             |
| Nov              | 346,314             | 346,936             | 342,905             |

<sup>1</sup> December preceding year.

<sup>2</sup> Revised 2007 only.

**Eggs: Production During the Month by Type,  
United States, 2006-07 <sup>1</sup>**

| Month            | Total Eggs          |                     | Table Eggs          |                     | Hatching Eggs       |                     |
|------------------|---------------------|---------------------|---------------------|---------------------|---------------------|---------------------|
|                  | 2006                | 2007                | 2006                | 2007                | 2006                | 2007                |
|                  | <i>Million Eggs</i> | <i>Million Eggs</i> | <i>Million Eggs</i> | <i>Million Eggs</i> | <i>Million Eggs</i> | <i>Million Eggs</i> |
| Dec <sup>2</sup> | 7,793               | 7,777               | 6,697               | 6,683               | 1,096               | 1,094               |
| Jan              | 7,727               | 7,637               | 6,622               | 6,535               | 1,105               | 1,102               |
| Feb              | 6,980               | 6,916               | 5,983               | 5,918               | 997                 | 998                 |
| Mar              | 7,843               | 7,769               | 6,732               | 6,646               | 1,112               | 1,123               |
| Apr              | 7,543               | 7,435               | 6,468               | 6,341               | 1,075               | 1,094               |
| May              | 7,637               | 7,591               | 6,520               | 6,449               | 1,117               | 1,143               |
| Jun              | 7,401               | 7,355               | 6,336               | 6,243               | 1,066               | 1,113               |
| Jul              | 7,645               | 7,573               | 6,550               | 6,435               | 1,095               | 1,138               |
| Aug              | 7,647               | 7,569               | 6,557               | 6,438               | 1,090               | 1,131               |
| Sep              | 7,430               | 7,370               | 6,379               | 6,273               | 1,051               | 1,097               |
| Oct <sup>3</sup> | 7,678               | 7,699               | 6,600               | 6,567               | 1,078               | 1,132               |
| Nov              | 7,549               | 7,511               | 6,506               | 6,420               | 1,043               | 1,090               |
| During Year      | 90,877              | 90,202              | 77,954              | 76,948              | 12,927              | 13,255              |

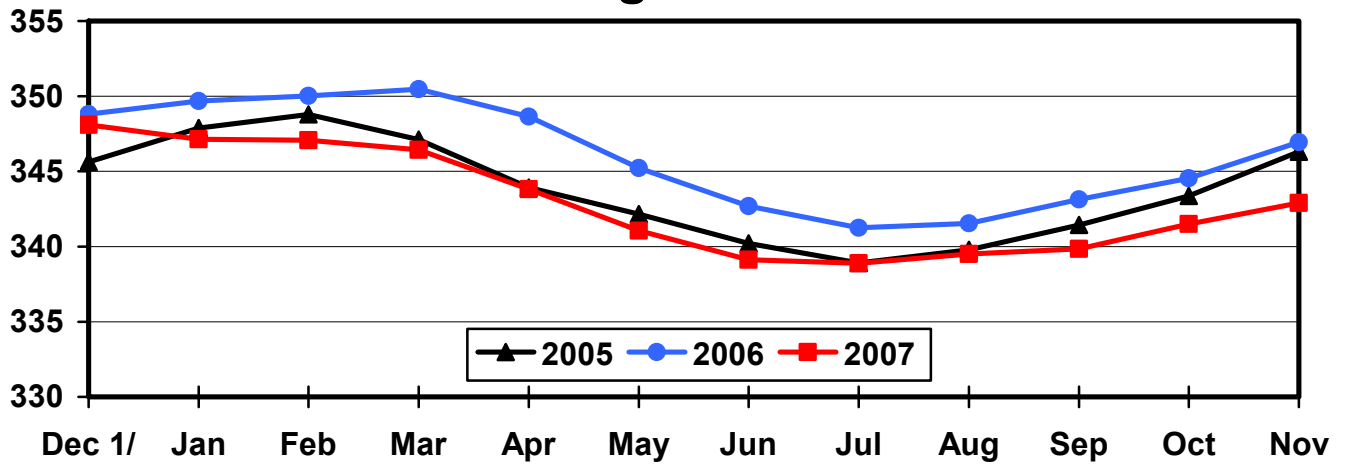
<sup>1</sup> Totals may not add due to rounding.

<sup>2</sup> December preceding year.

<sup>3</sup> Revised 2007 only.

## Average Number of Layers United States, 2005 - 2007 During the Month

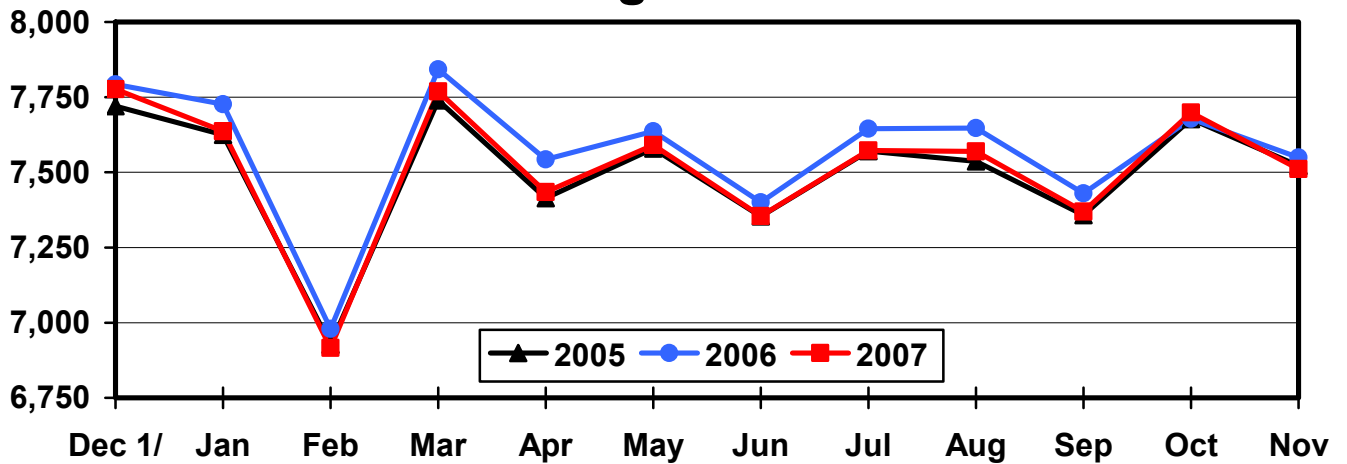
Million Layers



1/ Previous Year

## All Egg Production United States, 2005 - 2007 During the Month

Million Eggs



1/ Previous Year

**Layers and Eggs: Layers on Hand and Eggs Produced by Type,  
and Forced Molt, United States, October-November 2006-07<sup>1</sup>**

| Item   | Unit    | 2006    | 2007 <sup>2</sup> | 2007<br>as % of<br>2006 |
|--|---------|---------|-------------------|-------------------------|
| Layers During Oct  | 1,000   |         |                   |                         |
| All Layers   |         | 344,538 | 341,494           | 99                      |
| Table Egg Type   |         | 288,029 | 282,606           | 98                      |
| Hatching Egg Type  |         | 56,509  | 58,888            | 104                     |
| Broiler-Type Hatching  |         | 53,758  | 56,073            | 104                     |
| Egg-Type Hatching  |         | 2,751   | 2,815             | 102                     |
| Eggs per 100 Layers During Oct   | Number  |         |                   |                         |
| All Layers   |         | 2,228   | 2,255             | 101                     |
| Table Egg Type   |         | 2,291   | 2,324             | 101                     |
| Hatching Egg Type  |         | 1,908   | 1,922             | 101                     |
| Broiler-Type Hatching  |         | 1,881   | 1,899             | 101                     |
| Egg-Type Hatching  |         | 2,435   | 2,380             | 98                      |
| Eggs Produced During Oct   | Million |         |                   |                         |
| All Layers   |         | 7,678   | 7,699             | 100                     |
| Table Egg Type   |         | 6,600   | 6,567             | 100                     |
| Hatching Egg Type  |         | 1,078   | 1,132             | 105                     |
| Broiler-Type Hatching  |         | 1,011   | 1,065             | 105                     |
| Egg-Type Hatching  |         | 67      | 67                | 100                     |
| Layers on Nov 1  | 1,000   |         |                   |                         |
| All Layers   |         | 345,090 | 342,766           | 99                      |
| Table Egg Type   |         | 288,503 | 283,937           | 98                      |
| Hatching Egg Type  |         | 56,587  | 58,829            | 104                     |
| Broiler-Type Hatching  |         | 53,793  | 55,964            | 104                     |
| Egg-Type Hatching  |         | 2,794   | 2,865             | 103                     |
| Eggs per 100 Layers on Nov 1   | Number  |         |                   |                         |
| All Layers   |         | 72.1    | 72.7              | 101                     |
| Table Egg Type   |         | 74.2    | 74.9              | 101                     |
| Hatching Egg Type  |         | 61.2    | 61.7              | 101                     |
| Broiler-Type Hatching  |         | 60.4    | 60.9              | 101                     |
| Egg-Type Hatching  |         | 76.7    | 75.9              | 99                      |
| Forced Molt Layers on Nov 1  | Percent |         |                   |                         |
| Percent Being Molted   |         | 3.0     | 2.6               | 87                      |
| Percent with Molt Completed  |         | 26.0    | 23.9              | 92                      |
| Layers Sold for Slaughter During Oct   | 1,000   | 11,785  | 12,159            | 103                     |
| Layers Rendered, Died, Destroyed,<br>Composted or Disappeared For Any<br>Reason During Oct | 1,000   | 7,213   | 6,358             | 88                      |
| Pullets on Nov 1   | 1,000   | 98,364  | 99,612            | 101                     |
| Pullets Added During Oct <sup>3</sup>  | 1,000   | 20,901  | 20,235            | 97                      |

<sup>1</sup> Totals may not add due to rounding.

<sup>2</sup> Revised.

<sup>3</sup> Pullet chicks less than 3 days old added to pullet flocks.

**Layers and Eggs: Layers on Hand and Eggs Produced by Type,  
and Forced Molt, United States, November-December 2006-07<sup>1</sup>**

| Item   | Unit    | 2006    | 2007    | 2007<br>as % of<br>2006 |
|--|---------|---------|---------|-------------------------|
| Layers During Nov  | 1,000   |         |         |                         |
| All Layers   |         | 346,936 | 342,905 | 99                      |
| Table Egg Type   |         | 289,903 | 284,078 | 98                      |
| Hatching Egg Type  |         | 57,033  | 58,827  | 103                     |
| Broiler-Type Hatching  |         | 54,223  | 55,977  | 103                     |
| Egg-Type Hatching  |         | 2,810   | 2,850   | 101                     |
| Eggs per 100 Layers During Nov   | Number  |         |         |                         |
| All Layers   |         | 2,176   | 2,190   | 101                     |
| Table Egg Type   |         | 2,244   | 2,260   | 101                     |
| Hatching Egg Type  |         | 1,829   | 1,853   | 101                     |
| Broiler-Type Hatching  |         | 1,806   | 1,829   | 101                     |
| Egg-Type Hatching  |         | 2,278   | 2,316   | 102                     |
| Eggs Produced During Nov   | Million |         |         |                         |
| All Layers   |         | 7,549   | 7,511   | 99                      |
| Table Egg Type   |         | 6,506   | 6,420   | 99                      |
| Hatching Egg Type  |         | 1,043   | 1,090   | 105                     |
| Broiler-Type Hatching  |         | 979     | 1,024   | 105                     |
| Egg-Type Hatching  |         | 64      | 66      | 103                     |
| Layers on Dec 1  | 1,000   |         |         |                         |
| All Layers   |         | 348,719 | 343,003 | 98                      |
| Table Egg Type   |         | 291,267 | 284,199 | 98                      |
| Hatching Egg Type  |         | 57,452  | 58,804  | 102                     |
| Broiler-Type Hatching  |         | 54,636  | 55,977  | 102                     |
| Egg-Type Hatching  |         | 2,816   | 2,827   | 100                     |
| Eggs per 100 Layers on Dec 1   | Number  |         |         |                         |
| All Layers   |         | 72.9    | 73.1    | 100                     |
| Table Egg Type   |         | 75.3    | 75.5    | 100                     |
| Hatching Egg Type  |         | 60.6    | 61.7    | 102                     |
| Broiler-Type Hatching  |         | 59.9    | 60.8    | 102                     |
| Egg-Type Hatching  |         | 75.6    | 78.5    | 104                     |
| Forced Molt Layers on Dec 1  | Percent |         |         |                         |
| Percent Being Molted   |         | 2.2     | 1.8     | 82                      |
| Percent with Molt Completed  |         | 26.6    | 24.0    | 90                      |
| Layers Sold for Slaughter During Nov   | 1,000   | 12,056  | 11,924  | 99                      |
| Layers Rendered, Died, Destroyed,<br>Composted or Disappeared For Any<br>Reason During Nov | 1,000   | 6,202   | 5,553   | 90                      |
| Pullets on Dec 1   | 1,000   | 96,087  | 102,707 | 107                     |
| Pullets Added During Nov <sup>2</sup>  | 1,000   | 21,383  | 21,646  | 101                     |

<sup>1</sup> Totals may not add due to rounding.

<sup>2</sup> Pullet chicks less than 3 days old added to pullet flocks.

**Layers and Eggs: Layers on Hand and Eggs Produced by State  
and United States, During October 2006-07**

| State                | Table Egg Layers in<br>Flocks 30,000 and Above |                   | All Layers <sup>1</sup> |                   | Eggs per 100 for<br>All Layers <sup>1</sup> |                   |
|----------------------|--|-------------------|-------------------------|-------------------|---|-------------------|
|                      | 2006   | 2007 <sup>2</sup> | 2006                    | 2007 <sup>2</sup> | 2006  | 2007 <sup>2</sup> |
|                      | <i>1,000</i>                                   | <i>1,000</i>      | <i>1,000</i>            | <i>1,000</i>      | <i>Number</i>                               | <i>Number</i>     |
| AL                   | 1,748  | 1,277             | 8,779                   | 9,352             | 1,936                                       | 1,946             |
| AR                   | 4,554  | 4,125             | 13,888                  | 13,932            | 1,966                                       | 1,974             |
| CA                   | 18,593   | 18,659            | 19,060                  | 18,853            | 2,225                                       | 2,207             |
| CO                   | 3,309  | 3,291             | 3,790                   | 3,830             | 2,427                                       | 2,376             |
| CT                   | 2,665  | 2,849             | 2,725                   | 2,904             | 2,422                                       | 2,342             |
| FL                   | 10,307   | 10,312            | 10,703                  | 10,783            | 2,261                                       | 2,272             |
| GA                   | 9,609  | 9,548             | 19,345                  | 19,252            | 2,109                                       | 2,130             |
| HI                   | 403  | 349               | 419                     | 365               | 1,814                                       | 1,836             |
| IL                   | 4,809  | 4,941             | 5,053                   | 5,169             | 2,395                                       | 2,515             |
| IN                   | 23,633   | 23,638            | 24,322                  | 24,313            | 2,286                                       | 2,307             |
| IA                   | 51,217   | 51,751            | 51,981                  | 52,686            | 2,247                                       | 2,264             |
| ME                   | 3,897  | 3,797             | 3,967                   | 3,876             | 2,117                                       | 2,141             |
| MD                   | 2,608  | 2,615             | 2,752                   | 2,758             | 2,253                                       | 2,357             |
| MI                   | 8,866  | 8,700             | 9,117                   | 8,950             | 2,347                                       | 2,536             |
| MN                   | 10,657   | 9,877             | 11,118                  | 10,364            | 2,204                                       | 2,325             |
| MS                   | 1,634  | 1,532             | 6,242                   | 6,232             | 2,051                                       | 2,038             |
| MO                   | 6,260  | 5,650             | 7,348                   | 6,781             | 2,286                                       | 2,301             |
| NE                   | 11,531   | 10,254            | 11,606                  | 10,329            | 2,292                                       | 2,372             |
| NY                   | 3,886  | 3,723             | 4,137                   | 4,242             | 2,272                                       | 2,428             |
| NC                   | 3,688  | 4,915             | 11,205                  | 12,467            | 2,008                                       | 2,134             |
| OH                   | 27,058   | 25,612            | 27,566                  | 26,204            | 2,231                                       | 2,274             |
| OR                   | 2,561  | 2,430             | 2,741                   | 2,601             | 2,517                                       | 2,461             |
| PA                   | 21,626   | 20,275            | 23,497                  | 21,973            | 2,388                                       | 2,421             |
| SC                   | 3,620  | 3,439             | 4,829                   | 4,697             | 2,236                                       | 2,193             |
| SD                   | 3,110  | 3,095             | 3,210                   | 3,195             | 2,243                                       | 2,285             |
| TX                   | 14,465   | 14,501            | 18,798                  | 19,130            | 2,325                                       | 2,253             |
| VA                   | 1,331  | 1,424             | 3,205                   | 3,312             | 2,153                                       | 2,053             |
| WA                   | 4,755  | 4,642             | 4,816                   | 4,703             | 2,326                                       | 2,254             |
| WI                   | 4,181  | 4,371             | 4,699                   | 4,955             | 2,192                                       | 2,301             |
| Oth Sts <sup>3</sup> | 15,664   | 15,181            | 23,620                  | 23,286            | 2,193                                       | 2,237             |
| US                   | 282,245  | 276,773           | 344,538                 | 341,494           | 2,228                                       | 2,255             |

<sup>1</sup> Includes all layers and eggs produced in both table egg and hatching egg flocks regardless of size.

<sup>2</sup> Revised.

<sup>3</sup> Not published separately to avoid disclosing data for individual operations.



**Layers and Eggs: Layers on Hand and Eggs Produced by State  
and United States, During November 2006-07**

| State                | Table Egg Layers in<br>Flocks 30,000 and Above |              | All Layers <sup>1</sup> |              | Eggs per 100 for<br>All Layers <sup>1</sup> |               |
|----------------------|--|--------------|-------------------------|--------------|---|---------------|
|                      | 2006   | 2007         | 2006                    | 2007         | 2006  | 2007          |
|                      | <i>1,000</i>                                   | <i>1,000</i> | <i>1,000</i>            | <i>1,000</i> | <i>Number</i>                               | <i>Number</i> |
| AL                   | 1,739  | 1,367        | 8,872                   | 9,476        | 1,871                                       | 1,889         |
| AR                   | 4,456  | 4,100        | 13,920                  | 13,946       | 1,925                                       | 1,943         |
| CA                   | 18,916   | 19,097       | 19,405                  | 19,258       | 2,159                                       | 2,150         |
| CO                   | 3,249  | 3,349        | 3,746                   | 3,886        | 2,269                                       | 2,342         |
| CT                   | 2,836  | 2,846        | 2,897                   | 2,902        | 2,416                                       | 2,309         |
| FL                   | 10,522   | 10,421       | 10,967                  | 10,864       | 2,270                                       | 2,191         |
| GA                   | 9,711  | 9,592        | 19,392                  | 19,310       | 2,078                                       | 2,082         |
| HI                   | 402  | 347          | 417                     | 362          | 1,751                                       | 1,768         |
| IL                   | 4,893  | 4,927        | 5,131                   | 5,156        | 2,300                                       | 2,347         |
| IN                   | 23,902   | 23,366       | 24,605                  | 24,052       | 2,223                                       | 2,266         |
| IA                   | 51,305   | 52,673       | 52,096                  | 53,584       | 2,209                                       | 2,150         |
| ME                   | 3,844  | 3,813        | 3,913                   | 3,887        | 2,147                                       | 2,135         |
| MD                   | 2,492  | 2,653        | 2,662                   | 2,814        | 2,216                                       | 2,168         |
| MI                   | 8,895  | 8,866        | 9,146                   | 9,116        | 2,307                                       | 2,479         |
| MN                   | 10,708   | 9,909        | 11,177                  | 10,386       | 2,192                                       | 2,292         |
| MS                   | 1,661  | 1,580        | 6,290                   | 6,353        | 1,971                                       | 1,983         |
| MO                   | 6,222  | 5,655        | 7,306                   | 6,762        | 2,190                                       | 2,144         |
| NE                   | 11,543   | 10,101       | 11,618                  | 10,176       | 2,238                                       | 2,309         |
| NY                   | 3,894  | 3,776        | 4,282                   | 4,295        | 2,312                                       | 2,398         |
| NC                   | 3,775  | 4,922        | 11,398                  | 12,462       | 1,965                                       | 2,038         |
| OH                   | 26,842   | 25,833       | 27,351                  | 26,427       | 2,132                                       | 2,195         |
| OR                   | 2,546  | 2,413        | 2,736                   | 2,601        | 2,522                                       | 2,499         |
| PA                   | 22,016   | 20,069       | 23,827                  | 21,760       | 2,304                                       | 2,403         |
| SC                   | 3,679  | 3,350        | 4,865                   | 4,563        | 2,199                                       | 2,126         |
| SD                   | 3,101  | 3,093        | 3,201                   | 3,193        | 2,124                                       | 2,192         |
| TX                   | 14,486   | 14,581       | 18,828                  | 19,146       | 2,273                                       | 2,256         |
| VA                   | 1,355  | 1,409        | 3,229                   | 3,231        | 2,075                                       | 2,043         |
| WA                   | 4,998  | 4,647        | 5,058                   | 4,707        | 2,155                                       | 2,231         |
| WI                   | 4,429  | 4,227        | 4,976                   | 4,825        | 2,231                                       | 2,280         |
| Oth Sts <sup>2</sup> | 15,672   | 15,264       | 23,625                  | 23,405       | 2,154                                       | 2,162         |
| US                   | 284,089  | 278,246      | 346,936                 | 342,905      | 2,176                                       | 2,190         |

<sup>1</sup> Includes all layers and eggs produced in both table egg and hatching egg flocks regardless of size.

<sup>2</sup> Not published separately to avoid disclosing data for individual operations.

**Egg Production: By Type, State, and United States,  
October 2006-07<sup>1</sup>**

| State                | Total Production    |                     | Table Eggs <sup>2</sup> |                     | Hatching Eggs <sup>2</sup> |                     |
|----------------------|---------------------|---------------------|-------------------------|---------------------|----------------------------|---------------------|
|                      | 2006                | 2007 <sup>3</sup>   | 2006                    | 2007 <sup>3</sup>   | 2006                       | 2007 <sup>3</sup>   |
|                      | <i>Million Eggs</i> | <i>Million Eggs</i> | <i>Million Eggs</i>     | <i>Million Eggs</i> | <i>Million Eggs</i>        | <i>Million Eggs</i> |
| AL                   | 170                 | 182                 | 40                      | 31                  | 130                        | 151                 |
| AR                   | 273                 | 275                 | 104                     | 97                  | 169                        | 178                 |
| CA                   | 424                 | 416                 |                         |                     |                            |                     |
| CO                   | 92                  | 91                  |                         |                     |                            |                     |
| CT                   | 66                  | 68                  |                         |                     |                            |                     |
| FL                   | 242                 | 245                 | 235                     | 236                 | 7                          | 9                   |
| GA                   | 408                 | 410                 | 219                     | 221                 | 189                        | 189                 |
| HI                   | 7.6                 | 6.7                 | 7.6                     | 6.7                 | 0                          | 0                   |
| IL                   | 121                 | 130                 | 117                     | 126                 | 4                          | 4                   |
| IN                   | 556                 | 561                 | 544                     | 549                 | 12                         | 12                  |
| IA                   | 1,168               | 1,193               | 1,155                   | 1,177               | 13                         | 16                  |
| ME                   | 84                  | 83                  |                         |                     |                            |                     |
| MD                   | 62                  | 65                  | 60                      | 63                  | 2                          | 2                   |
| MI                   | 214                 | 227                 |                         |                     |                            |                     |
| MN                   | 245                 | 241                 | 237                     | 232                 | 8                          | 9                   |
| MS                   | 128                 | 127                 | 39                      | 38                  | 89                         | 89                  |
| MO                   | 168                 | 156                 |                         |                     |                            |                     |
| NE                   | 266                 | 245                 | 266                     | 245                 | 0                          | 0                   |
| NY                   | 94                  | 103                 |                         |                     |                            |                     |
| NC                   | 225                 | 266                 | 88                      | 124                 | 137                        | 142                 |
| OH                   | 615                 | 596                 |                         |                     |                            |                     |
| OR                   | 69                  | 64                  | 67                      | 62                  | 2                          | 2                   |
| PA                   | 561                 | 532                 | 541                     | 513                 | 20                         | 19                  |
| SC                   | 108                 | 103                 | 86                      | 80                  | 22                         | 23                  |
| SD                   | 72                  | 73                  | 72                      | 73                  | 0                          | 0                   |
| TX                   | 437                 | 431                 |                         |                     |                            |                     |
| VA                   | 69                  | 68                  | 35                      | 33                  | 34                         | 35                  |
| WA                   | 112                 | 106                 |                         |                     |                            |                     |
| WI                   | 103                 | 114                 |                         |                     |                            |                     |
| Oth Sts <sup>4</sup> | 518                 | 521                 | 392                     | 388                 | 126                        | 133                 |
| US                   | 7,678               | 7,699               | 6,600                   | 6,567               | 1,078                      | 1,132               |

<sup>1</sup> Totals may not add due to rounding.

<sup>2</sup> Data by type of flock not shown for some States to avoid disclosing individual operations, data included in US totals.

<sup>3</sup> Revised.

<sup>4</sup> Not published separately to avoid disclosing data for individual operations.

**Egg Production: By Type, State, and United States,  
November 2006-07 <sup>1</sup>**

| State                | Total Production    |                     | Table Eggs <sup>2</sup> |                     | Hatching Eggs <sup>2</sup> |                     |
|----------------------|---------------------|---------------------|-------------------------|---------------------|----------------------------|---------------------|
|                      | 2006                | 2007                | 2006                    | 2007                | 2006                       | 2007                |
|                      | <i>Million Eggs</i> | <i>Million Eggs</i> | <i>Million Eggs</i>     | <i>Million Eggs</i> | <i>Million Eggs</i>        | <i>Million Eggs</i> |
| AL                   | 166                 | 179                 | 40                      | 32                  | 126                        | 147                 |
| AR                   | 268                 | 271                 | 103                     | 96                  | 165                        | 175                 |
| CA                   | 419                 | 414                 |                         |                     |                            |                     |
| CO                   | 85                  | 91                  |                         |                     |                            |                     |
| CT                   | 70                  | 67                  |                         |                     |                            |                     |
| FL                   | 249                 | 238                 | 242                     | 231                 | 7                          | 7                   |
| GA                   | 403                 | 402                 | 222                     | 219                 | 181                        | 183                 |
| HI                   | 7.3                 | 6.4                 | 7.3                     | 6.4                 | 0                          | 0                   |
| IL                   | 118                 | 121                 | 114                     | 118                 | 4                          | 3                   |
| IN                   | 547                 | 545                 | 535                     | 533                 | 12                         | 12                  |
| IA                   | 1,151               | 1,152               | 1,138                   | 1,137               | 13                         | 15                  |
| ME                   | 84                  | 83                  |                         |                     |                            |                     |
| MD                   | 59                  | 61                  | 57                      | 59                  | 2                          | 2                   |
| MI                   | 211                 | 226                 |                         |                     |                            |                     |
| MN                   | 245                 | 238                 | 237                     | 229                 | 8                          | 9                   |
| MS                   | 124                 | 126                 | 39                      | 39                  | 85                         | 87                  |
| MO                   | 160                 | 145                 |                         |                     |                            |                     |
| NE                   | 260                 | 235                 | 260                     | 235                 | 0                          | 0                   |
| NY                   | 99                  | 103                 |                         |                     |                            |                     |
| NC                   | 224                 | 254                 | 89                      | 120                 | 135                        | 134                 |
| OH                   | 583                 | 580                 |                         |                     |                            |                     |
| OR                   | 69                  | 65                  | 67                      | 63                  | 2                          | 2                   |
| PA                   | 549                 | 523                 | 530                     | 504                 | 19                         | 19                  |
| SC                   | 107                 | 97                  | 86                      | 76                  | 21                         | 21                  |
| SD                   | 68                  | 70                  | 68                      | 70                  | 0                          | 0                   |
| TX                   | 428                 | 432                 |                         |                     |                            |                     |
| VA                   | 67                  | 66                  | 34                      | 33                  | 33                         | 33                  |
| WA                   | 109                 | 105                 |                         |                     |                            |                     |
| WI                   | 111                 | 110                 |                         |                     |                            |                     |
| Oth Sts <sup>3</sup> | 509                 | 506                 | 388                     | 378                 | 121                        | 128                 |
| US                   | 7,549               | 7,511               | 6,506                   | 6,420               | 1,043                      | 1,090               |

<sup>1</sup> Totals may not add due to rounding.

<sup>2</sup> Data by type of flock not shown for some States to avoid disclosing individual operations, data included in US totals.

<sup>3</sup> Not published separately to avoid disclosing data for individual operations.

**Forced Molt: Percent of All Layers by Month,  
United States, 2006-07 <sup>1</sup>**

| Month            | Percent Being Molted |                | Percent with Molt Completed |                |
|------------------|----------------------|----------------|-----------------------------|----------------|
|                  | 2006                 | 2007           | 2006                        | 2007           |
|                  | <i>Percent</i>       | <i>Percent</i> | <i>Percent</i>              | <i>Percent</i> |
| Jan              | 4.3                  | 4.4            | 23.0                        | 24.5           |
| Feb              | 5.2                  | 3.4            | 23.7                        | 24.4           |
| Mar              | 4.0                  | 2.9            | 24.4                        | 24.1           |
| Apr              | 2.3                  | 2.8            | 24.9                        | 23.4           |
| May              | 5.4                  | 5.4            | 23.6                        | 22.2           |
| Jun              | 4.7                  | 3.6            | 24.7                        | 24.0           |
| Jul              | 3.5                  | 4.0            | 25.6                        | 24.1           |
| Aug              | 4.2                  | 3.4            | 25.2                        | 23.5           |
| Sep              | 3.4                  | 3.5            | 25.9                        | 24.0           |
| Oct              | 4.3                  | 3.5            | 25.8                        | 23.6           |
| Nov <sup>2</sup> | 3.0                  | 2.6            | 26.0                        | 23.9           |
| Dec              | 2.2                  | 1.8            | 26.6                        | 24.0           |

<sup>1</sup> As of first of month.

<sup>2</sup> Revised 2007 only.

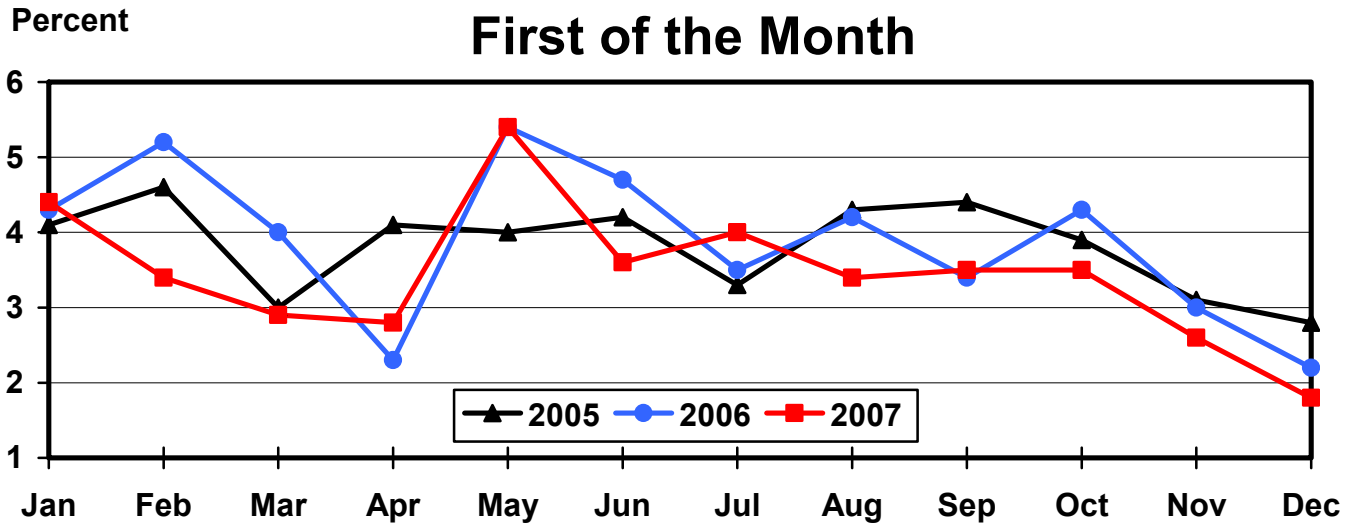
**Forced Molt: Percent of All Layers by State  
and United States, December 2006-07 <sup>1</sup>**

| State                | Percent Being Molted |                | Percent with Molt Completed |                |
|----------------------|----------------------|----------------|-----------------------------|----------------|
|                      | 2006                 | 2007           | 2006                        | 2007           |
|                      | <i>Percent</i>       | <i>Percent</i> | <i>Percent</i>              | <i>Percent</i> |
| AL                   | 0.5                  | 0.5            | 5.5                         | 6.5            |
| AR                   | 0.0                  | 0.0            | 14.5                        | 13.0           |
| CA                   | 5.0                  | 3.5            | 35.5                        | 31.5           |
| CO                   | 0.0                  | 5.0            | 21.5                        | 20.0           |
| CT                   | 0.0                  | 0.0            | 15.0                        | 15.5           |
| FL                   | 0.5                  | 1.5            | 40.0                        | 37.0           |
| GA                   | 0.5                  | 0.5            | 15.0                        | 14.5           |
| HI                   | 5.0                  | 9.5            | 65.0                        | 51.5           |
| IL                   | 4.5                  | 3.0            | 30.5                        | 39.0           |
| IN                   | 3.5                  | 2.0            | 32.5                        | 36.0           |
| IA                   | 4.0                  | 2.5            | 37.5                        | 38.0           |
| ME                   | 0.0                  | 0.0            | 0.0                         | 0.0            |
| MD                   | 5.5                  | 6.0            | 39.5                        | 17.0           |
| MI                   | 4.0                  | 2.0            | 28.5                        | 18.0           |
| MN                   | 0.5                  | 1.5            | 32.5                        | 26.0           |
| MS                   | 0.0                  | 0.5            | 14.0                        | 10.5           |
| MO                   | 2.0                  | 3.0            | 22.5                        | 16.0           |
| NE                   | 6.0                  | 0.0            | 23.0                        | 12.5           |
| NY                   | 1.0                  | 2.5            | 6.5                         | 8.0            |
| NC                   | 0.0                  | 0.5            | 10.5                        | 7.5            |
| OH                   | 0.5                  | 2.0            | 27.5                        | 16.5           |
| OR                   | 0.0                  | 0.0            | 35.0                        | 35.0           |
| PA                   | 1.5                  | 2.0            | 16.0                        | 13.0           |
| SC                   | 7.0                  | 4.5            | 33.5                        | 26.0           |
| SD                   | 5.0                  | 5.0            | 22.0                        | 19.0           |
| TX                   | 0.5                  | 0.5            | 25.8                        | 27.0           |
| VA                   | 0.0                  | 0.0            | 20.0                        | 26.5           |
| WA                   | 4.5                  | 7.0            | 63.5                        | 41.5           |
| WI                   | 3.5                  | 2.0            | 29.5                        | 31.0           |
| Oth Sts <sup>2</sup> | 0.7                  | 1.2            | 26.0                        | 24.9           |
| US                   | 2.2                  | 1.8            | 26.6                        | 24.0           |

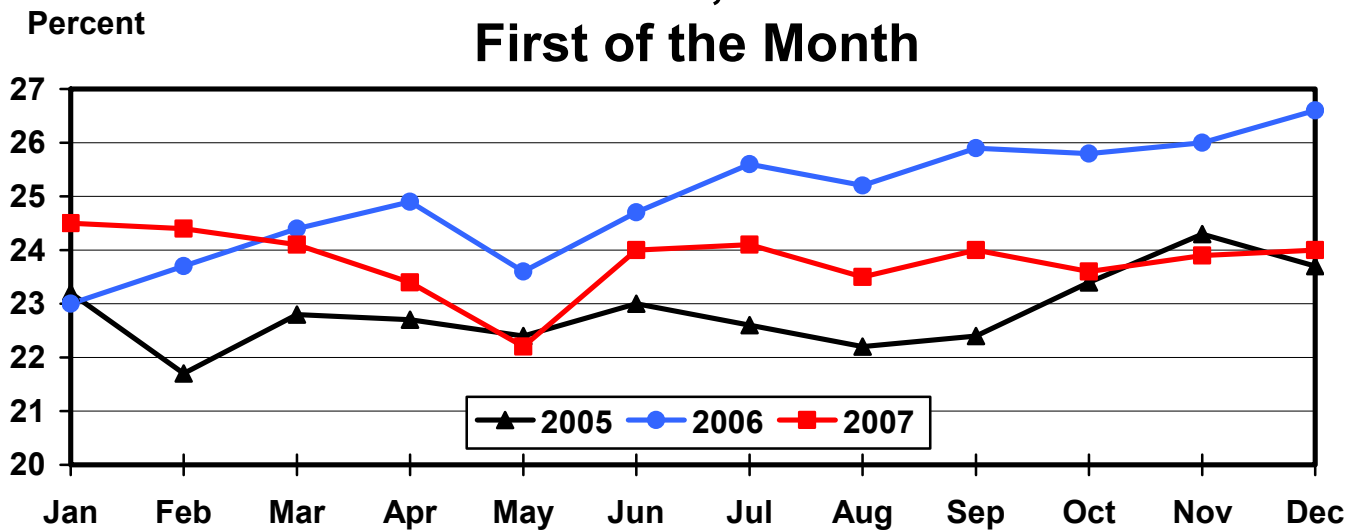
<sup>1</sup> As of first of month.

<sup>2</sup> Not published separately to avoid disclosing data for individual operations.

## All Layers: Percent Being Molted United States, 2005 - 2007 First of the Month



## All Layers: Percent Molt Completed United States, 2005 - 2007 First of the Month



**Hatchery Production: Eggs in Incubators, Chicks Hatched,  
and Placements by Type, United States, November-December 2006-07**

| Item  | 2006         | 2007         | 2007<br>as % of<br>2006 |
|---|--------------|--------------|-------------------------|
|   | <i>1,000</i> | <i>1,000</i> | <i>Percent</i>          |
| Egg-Type  |              |              |                         |
| Eggs in Incubators on Dec 1   | 33,693       | 35,915       | 107                     |
| Chicks Hatched During Nov   | 31,554       | 33,986       | 108                     |
| Chicks Hatched Jan thru Nov   | 392,885      | 409,857      | 104                     |
| Pullets Hatched During Nov for Intended<br>Placements in Hatchery Supply Flocks | 206          | 281          | 136                     |
| 7-18 Months Earlier <sup>1</sup>  | 2,796        | 2,956        | 106                     |
| Broiler-Type  |              |              |                         |
| Eggs in Incubators on Dec 1   | 653,931      | 677,805      | 104                     |
| Chicks Hatched During Nov   | 729,946      | 761,402      | 104                     |
| Chicks Hatched Jan thru Nov   | 8,631,027    | 8,770,461    | 102                     |
| Pullets Hatched During Nov for Intended<br>Placements in Hatchery Supply Flocks | 7,618        | 7,438        | 98                      |
| 7-15 Months Earlier <sup>2</sup>  | 63,993       | 64,145       | 100                     |

<sup>1</sup> 2007 includes pullet chicks hatched May 2006 through Apr 2007.

<sup>2</sup> 2007 includes pullet chicks hatched Aug 2006 through Apr 2007.

**Egg-Type Eggs in Incubators: By Region and United States,  
December 1, 2006-07**

| Region          | 2006         | 2007         | 2007<br>as % of<br>2006 |
|-----------------|--------------|--------------|-------------------------|
|                 | <i>1,000</i> | <i>1,000</i> | <i>Percent</i>          |
| North Atlantic  | 4,612        | 4,899        | 106                     |
| E North Central | 7,251        | 7,245        | 100                     |
| W North Central | 7,845        | 8,349        | 106                     |
| South Atlantic  | 4,385        | 5,121        | 117                     |
| South Central   | 5,506        | 5,003        | 91                      |
| West            | 4,094        | 5,298        | 129                     |
| US              | 33,693       | 35,915       | 107                     |

Regions:

North Atlantic = CT, ME, MA, NH, NJ, NY, PA, RI, VT.

E North Central = IL, IN, MI, OH, WI.

W North Central = IA, KS, MN, MO, NE, ND, SD.

South Atlantic = DE, FL, GA, MD, NC, SC, VA, WV.

South Central = AL, AR, KY, LA, MS, OK, TN, TX.

West = AK, AZ, CA, CO, HI, ID, MT, NM, NV, OR, UT, WA, WY.

**Egg-Type Chicks Hatched: By State and United States,  
November 2006-07**

| State                | During November |              |                         | Jan-Nov      |              |                         |
|----------------------|-----------------|--------------|-------------------------|--------------|--------------|-------------------------|
|                      | 2006            | 2007         | 2007<br>as % of<br>2006 | 2006         | 2007         | 2007<br>as % of<br>2006 |
|                      | <i>1,000</i>    | <i>1,000</i> | <i>Percent</i>          | <i>1,000</i> | <i>1,000</i> | <i>Percent</i>          |
| GA                   | 1,803           | 1,993        | 111                     | 24,408       | 24,178       | 99                      |
| IN                   | 4,621           | 4,955        | 107                     | 54,424       | 58,497       | 107                     |
| IA                   | 6,300           | 6,762        | 107                     | 73,800       | 80,370       | 109                     |
| MN                   | 1,084           | 1,104        | 102                     | 10,718       | 11,409       | 106                     |
| PA                   | 3,318           | 3,696        | 111                     | 48,225       | 49,165       | 102                     |
| Oth Sts <sup>1</sup> | 14,428          | 15,476       | 107                     | 181,310      | 186,238      | 103                     |
| US                   | 31,554          | 33,986       | 108                     | 392,885      | 409,857      | 104                     |

<sup>1</sup> Not published separately to avoid disclosing data for individual operations.

**Egg-Type Chicks Hatched: By Month, United States, 2006-07**

| Month | By Months    |              |                         | Cumulative   |              |                         |
|-------|--------------|--------------|-------------------------|--------------|--------------|-------------------------|
|       | 2006         | 2007         | 2007<br>as % of<br>2006 | 2006         | 2007         | 2007<br>as % of<br>2006 |
|       | <i>1,000</i> | <i>1,000</i> | <i>Percent</i>          | <i>1,000</i> | <i>1,000</i> | <i>Percent</i>          |
| Jan   | 35,159       | 36,926       | 105                     | 35,159       | 36,926       | 105                     |
| Feb   | 33,409       | 36,766       | 110                     | 68,568       | 73,692       | 107                     |
| Mar   | 38,805       | 40,537       | 104                     | 107,373      | 114,229      | 106                     |
| Apr   | 35,435       | 39,704       | 112                     | 142,808      | 153,933      | 108                     |
| May   | 39,744       | 38,498       | 97                      | 182,552      | 192,431      | 105                     |
| Jun   | 37,406       | 40,005       | 107                     | 219,958      | 232,436      | 106                     |
| Jul   | 32,727       | 35,560       | 109                     | 252,685      | 267,996      | 106                     |
| Aug   | 35,611       | 36,838       | 103                     | 288,296      | 304,834      | 106                     |
| Sep   | 36,873       | 35,270       | 96                      | 325,169      | 340,104      | 105                     |
| Oct   | 36,162       | 35,767       | 99                      | 361,331      | 375,871      | 104                     |
| Nov   | 31,554       | 33,986       | 108                     | 392,885      | 409,857      | 104                     |
| Dec   | 33,183       |              |                         | 426,068      |              |                         |

**Intended Placements: Egg-Type Pullet Chicks for Hatchery Supply  
Flocks by Month and Total, United States, 2006-07<sup>1</sup>**

| Month | Pullet Chicks Hatched |              | 2007<br>as % of<br>2006 | Cumulative Potential Plcmts<br>Relative to Current Supply<br>Flocks 7-18 Months Earlier <sup>2</sup> |              |
|-------|-----------------------|--------------|-------------------------|--|--------------|
|       | 2006                  | 2007         |                         | 2007   | 2008         |
|       | <i>1,000</i>          | <i>1,000</i> | <i>Percent</i>          | <i>1,000</i>   | <i>1,000</i> |
| Jan   | 223                   | 265          | 119                     | 2,870  | 3,008        |
| Feb   | 200                   | 166          | 83                      | 2,947  | 2,872        |
| Mar   | 261                   | 316          | 121                     | 2,970  | 2,866        |
| Apr   | 254                   | 274          | 108                     | 2,855  | 2,906        |
| May   | 241                   | 191          | 79                      | 2,889  | 2,868        |
| Jun   | 198                   | 300          | 152                     | 2,915  | 2,943        |
| Jul   | 319                   | 183          | 57                      | 2,873  |              |
| Aug   | 284                   | 278          | 98                      | 2,915  |              |
| Sep   | 260                   | 300          | 115                     | 2,881  |              |
| Oct   | 222                   | 184          | 83                      | 2,936  |              |
| Nov   | 206                   | 281          | 136                     | 2,956  |              |
| Dec   | 205                   |              |                         | 2,906  |              |
| Total | 2,873                 |              |                         |  |              |

<sup>1</sup> Reported by leading breeders. Coverage may not be 100 percent. Includes expected pullet chicks from eggs sold during the preceding month at the rate of 125 pullet chicks per 30 dozen case of eggs.

<sup>2</sup> For November 2007, includes breeder pullet chicks hatched May 2006 through Apr 2007. The 7-18 months represent the first laying cycle. Molting and additional laying cycles will increase the cumulative potential placements.

**Broiler-Type Eggs in Incubators: By Region  
and United States, December 1, 2006-07**

| Region          | 2006         | 2007         | 2007<br>as % of<br>2006 |
|-----------------|--------------|--------------|-------------------------|
|                 | <i>1,000</i> | <i>1,000</i> | <i>Percent</i>          |
| North Atlantic  | 12,173       | 13,122       | 108                     |
| E North Central | 9,459        | 11,325       | 120                     |
| W North Central | 28,384       | 29,854       | 105                     |
| South Atlantic  | 244,422      | 250,071      | 102                     |
| South Central   | 333,232      | 348,033      | 104                     |
| West            | 26,261       | 25,400       | 97                      |
| US              | 653,931      | 677,805      | 104                     |



**Broiler-Type Chicks Hatched: By State  
and United States, November 2006-07**

| State                | During November |              |                         | Jan-Nov      |              |                         |
|----------------------|-----------------|--------------|-------------------------|--------------|--------------|-------------------------|
|                      | 2006            | 2007         | 2007<br>as % of<br>2006 | 2006         | 2007         | 2007<br>as % of<br>2006 |
|                      | <i>1,000</i>    | <i>1,000</i> | <i>Percent</i>          | <i>1,000</i> | <i>1,000</i> | <i>Percent</i>          |
| AL                   | 103,361         | 104,849      | 101                     | 1,239,290    | 1,232,852    | 99                      |
| AR                   | 92,598          | 92,972       | 100                     | 1,114,814    | 1,110,269    | 100                     |
| DE                   | 13,146          | 14,673       | 112                     | 153,177      | 162,412      | 106                     |
| FL                   | 4,883           | 4,881        | 100                     | 54,108       | 54,355       | 100                     |
| GA                   | 115,631         | 120,012      | 104                     | 1,354,115    | 1,388,826    | 103                     |
| KY                   | 23,870          | 24,272       | 102                     | 281,027      | 299,256      | 106                     |
| LA                   | 13,605          | 14,168       | 104                     | 158,457      | 155,572      | 98                      |
| MD                   | 30,085          | 29,987       | 100                     | 343,848      | 342,078      | 99                      |
| MS                   | 58,384          | 64,865       | 111                     | 717,763      | 743,854      | 104                     |
| NC                   | 64,781          | 68,594       | 106                     | 734,086      | 767,664      | 105                     |
| OK                   | 22,350          | 22,570       | 101                     | 251,104      | 260,173      | 104                     |
| PA                   | 12,986          | 14,248       | 110                     | 153,838      | 156,072      | 101                     |
| SC                   | 18,033          | 18,363       | 102                     | 206,342      | 213,613      | 104                     |
| TX                   | 48,215          | 51,926       | 108                     | 593,096      | 591,059      | 100                     |
| VA                   | 20,748          | 22,075       | 106                     | 252,391      | 251,294      | 100                     |
| CA, MO, TN, & WV     | 65,174          | 67,836       | 104                     | 773,863      | 781,679      | 101                     |
| 19 Sts <sup>1</sup>  | 707,850         | 736,291      | 104                     | 8,381,319    | 8,511,028    | 102                     |
| Oth Sts <sup>2</sup> | 22,096          | 25,111       | 114                     | 249,708      | 259,433      | 104                     |
| US                   | 729,946         | 761,402      | 104                     | 8,631,027    | 8,770,461    | 102                     |

<sup>1</sup> States in the weekly hatchery production estimating program.

<sup>2</sup> Not published separately to avoid disclosing data for individual operations.

**Broiler-Type Chicks Hatched: By Month, United States, 2006-07**

| Month | By Months    |              |                         | Cumulative   |              |                         |
|-------|--------------|--------------|-------------------------|--------------|--------------|-------------------------|
|       | 2006         | 2007         | 2007<br>as % of<br>2006 | 2006         | 2007         | 2007<br>as % of<br>2006 |
|       | <i>1,000</i> | <i>1,000</i> | <i>Percent</i>          | <i>1,000</i> | <i>1,000</i> | <i>Percent</i>          |
| Jan   | 804,801      | 797,066      | 99                      | 804,801      | 797,066      | 99                      |
| Feb   | 733,425      | 723,753      | 99                      | 1,538,226    | 1,520,819    | 99                      |
| Mar   | 817,842      | 810,732      | 99                      | 2,356,068    | 2,331,551    | 99                      |
| Apr   | 787,457      | 800,524      | 102                     | 3,143,525    | 3,132,075    | 100                     |
| May   | 812,137      | 837,386      | 103                     | 3,955,662    | 3,969,461    | 100                     |
| Jun   | 788,652      | 810,419      | 103                     | 4,744,314    | 4,779,880    | 101                     |
| Jul   | 801,537      | 820,865      | 102                     | 5,545,851    | 5,600,745    | 101                     |
| Aug   | 810,030      | 828,788      | 102                     | 6,355,881    | 6,429,533    | 101                     |
| Sep   | 772,258      | 784,155      | 102                     | 7,128,139    | 7,213,688    | 101                     |
| Oct   | 772,942      | 795,371      | 103                     | 7,901,081    | 8,009,059    | 101                     |
| Nov   | 729,946      | 761,402      | 104                     | 8,631,027    | 8,770,461    | 102                     |
| Dec   | 796,523      |              |                         | 9,427,550    |              |                         |

**Intended Placements: Broiler-Type Pullet Chicks for Hatchery  
Supply Flocks by Month and Total, 2006-07 <sup>1</sup>**

| Month                                 | Pullet Chicks Hatched |              | 2007<br>as % of<br>2006 | Cumulative Potential Plcmts<br>Relative to Current Supply<br>Flocks 7-15 Months Earlier <sup>2</sup> |              |
|---------------------------------------|-----------------------|--------------|-------------------------|--|--------------|
|                                       | 2006                  | 2007         |                         | 2007   | 2008         |
|                                       | <i>1,000</i>          | <i>1,000</i> | <i>Percent</i>          | <i>1,000</i>   | <i>1,000</i> |
| US<br>Place-<br>ments                 |                       |              |                         |  |              |
| Jan                                   | 6,825                 | 7,015        | 103                     | 64,544   | 65,333       |
| Feb                                   | 7,593                 | 7,071        | 93                      | 64,056   | 65,407       |
| Mar                                   | 7,012                 | 7,135        | 102                     | 64,389   | 65,581       |
| Apr                                   | 6,593                 | 6,692        | 102                     | 64,340   | 65,732       |
| May                                   | 7,531                 | 8,083        | 107                     | 64,259   | 65,687       |
| Jun                                   | 7,636                 | 7,799        | 102                     | 64,284   | 66,054       |
| Jul                                   | 6,456                 | 6,818        | 106                     | 64,448   |              |
| Aug                                   | 7,631                 | 7,792        | 102                     | 64,870   |              |
| Sep                                   | 7,063                 | 7,327        | 104                     | 64,410   |              |
| Oct                                   | 6,744                 | 6,970        | 103                     | 63,909   |              |
| Nov                                   | 7,618                 | 7,438        | 98                      | 64,145   |              |
| Dec                                   | 7,176                 |              |                         | 64,597   |              |
| Annual<br>Total                       | 85,878                |              |                         |  |              |
| Total<br>Place-<br>ments <sup>3</sup> |                       |              |                         |  |              |
| Jan                                   | 8,018                 | 8,772        | 109                     |  |              |
| Feb                                   | 9,026                 | 8,811        | 98                      |  |              |
| Mar                                   | 8,415                 | 9,025        | 107                     |  |              |
| Apr                                   | 7,558                 | 8,358        | 111                     |  |              |
| May                                   | 8,930                 | 9,780        | 110                     |  |              |
| Jun                                   | 9,144                 | 9,435        | 103                     |  |              |
| Jul                                   | 7,845                 | 8,370        | 107                     |  |              |
| Aug                                   | 9,170                 | 9,466        | 103                     |  |              |
| Sep                                   | 8,742                 | 9,070        | 104                     |  |              |
| Oct                                   | 8,028                 | 9,076        | 113                     |  |              |
| Nov                                   | 9,550                 | 9,614        | 101                     |  |              |
| Dec                                   | 8,700                 |              |                         |  |              |
| Annual<br>Total                       | 103,126               |              |                         |  |              |

<sup>1</sup> Reported by leading breeders. Coverage may not be 100 percent. Includes expected pullet chicks from eggs sold during the preceding month at the rate of 125 pullet chicks per 30 dozen case of eggs.

<sup>2</sup> For Nov 2007, includes breeder pullet chicks hatched Aug 2006 through Apr 2007.

<sup>3</sup> U.S. production of intended placements worldwide.

## Reliability of Chicken and Eggs Estimates

**Survey Procedures:** Primary data for the "**Chickens and Eggs**" report are from weekly and/or monthly questionnaires sent to producers. An attempt is made to collect information for layer and egg estimates from each known contractor and independent producer who has at least 30,000 table egg layers, flocks of hatchery supply layers, or pullet only operations with at least 500 pullets. Coverage for operations with less than 30,000 table egg layers are estimated each month based on data reported in December. Approximately 650 contractors, independent egg producers, and pullet only operations are contacted each month. All known hatcheries, approximately 300, are contacted for information on a weekly and/or monthly basis.

**Estimating Procedures:** Sound statistical methodology is employed to derive estimates from the reported data. All data are checked for unusual values. Data from each operation are compared to their own past operating profile and to trends from similar operations. Data for missing operations are estimated based on similar operations or historical data. NASS field offices prepare these estimates by using a combination of survey indications and historic trends. Individual State estimates are reviewed by the Agricultural Statistics Board for reasonableness. Individual hatchery data are summed to State, regional, and U.S. totals.

For chicken hatcheries, chicks hatched consist of all chicks of domesticated breeds including males and chicks destined for hatchery supply flocks and research purposes. Eggs set are eggs in incubators for the purpose of hatching. The relationship of egg-type chicks hatched to chicken inventory and poultry marketings are carefully monitored. The disposition of egg-type chicks hatched prior to placement into the laying flock can vary significantly, which can make comparisons to changes in layer inventory inconsistent over time. Broiler chicks placed are specifically placed on feed for meat production. Intended placement data reported by leading breeders include pullet chicks expected from eggs sold the preceding month. The breeders in this report account for a large percentage of replacement pullets for hatchery supply flocks. Production of replacement pullets by these breeders indicates the number of pullets available to hatchery supply flocks several months before the pullets will actually move into the flocks. "Hatchery Supply Flocks" include all generations of layers which could lay eggs to supply a hatchery. This includes the generations of parents, grandparents, great-grandparents, pedigree, etc. Also included are research flocks, vaccine flocks, and specific pathogen-free flocks. The broiler cumulative potential placements are a moving total of the intended placements 7-15 months earlier. The egg-type cumulative potential placements of 7-18 months represent the first laying cycle. Molting and additional laying cycles will increase the cumulative potential placements of egg-type hatching flocks.

**Revision Policy:** The previous month's estimates are subject to revision if late reports or corrected data indicates a different level. Additionally, revisions after the monthly report will be made at the end of the marketing year and published in the annual reports of "**Chickens and Eggs Summary**" and "**Hatchery Production**".

**Reliability:** Estimates are based on a census of all known contractors and independent producers who have at least 30,000 table egg layers, flocks of hatchery supply layers, pullet only operations with at least 500 pullets, or operating hatcheries and therefore, have no sampling error. However, estimates are subject to errors such as omission, duplication, and mistakes in reporting, recording, and processing the data. While these errors cannot be measured directly, they are minimized through strict quality controls in the data collection process and a careful review of all reported data for consistency and reasonableness.

### Information Contacts

Listed below are the commodity specialists in the Livestock Branch of the National Agricultural Statistics Service to contact for additional information.

|   |                |
|---|----------------|
| Dan Kerestes, Chief, Livestock Branch .....   | (202) 720-3570 |
| Darin Jantzi, Head, Poultry and Specialty Commodities Section .....   | (202) 720-3570 |
| David Colwell - Cold Storage .....  | (202) 720-8784 |
| Fleming Gibson - Egg Products, Poultry Slaughter, Catfish Processing, Mink .....                                      | (202) 690-3237 |
| Sharyn Lavender - Broiler Hatchery, Chicken Hatchery, Honey .....   | (202) 720-3244 |
| Kim Linonis - Layers, Eggs .....  | (202) 690-8632 |
| Toby Paterson - Catfish Production, Trout Production, Census of Aquaculture,<br>Turkey Hatchery, Turkeys Raised ..... | (202) 720-0585 |

## ACCESS TO REPORTS!!

---

For your convenience, there are several ways to obtain NASS reports, data products, and services:

### INTERNET ACCESS

All NASS reports are available free of charge on the worldwide Internet. For access, connect to the Internet and go to the NASS Home Page at: [www.nass.usda.gov](http://www.nass.usda.gov).

### E-MAIL SUBSCRIPTION

All NASS reports are available by subscription free of charge direct to your e-mail address. Starting with the NASS Home Page at [www.nass.usda.gov](http://www.nass.usda.gov), under the right navigation, *Receive reports by Email*, click on **National** or **State**. Follow the instructions on the screen.

-----

### PRINTED REPORTS OR DATA PRODUCTS

**CALL OUR TOLL-FREE ORDER DESK: 800-999-6779 (U.S. and Canada)**  
**Other areas, please call 703-605-6220      FAX: 703-605-6900**  
**(Visa, MasterCard, check, or money order acceptable for payment.)**

-----

### ASSISTANCE

For **assistance** with general agricultural statistics or further information about NASS or its products or services, contact the **Agricultural Statistics Hotline** at **800-727-9540**, 7:30 a.m. to 4:00 p.m. ET, or e-mail: [nass@nass.usda.gov](mailto:nass@nass.usda.gov).

The U.S. Department of Agriculture (USDA) prohibits discrimination in all its programs and activities on the basis of race, color, national origin, age, disability, and where applicable, sex, marital status, familial status, parental status, religion, sexual orientation, genetic information, political beliefs, reprisal, or because all or a part of an individual's income is derived from any public assistance program. (Not all prohibited bases apply to all programs.) Persons with disabilities who require alternative means for communication of program information (Braille, large print, audiotape, etc.) should contact USDA's TARGET Center at (202) 720-2600 (voice and TDD).

To file a complaint of discrimination, write to USDA, Director, Office of Civil Rights, 1400 Independence Avenue, S.W., Washington, D.C. 20250-9410, or call (800) 795-3272 (voice) or (202) 720-6382 (TDD). USDA is an equal opportunity provider and employer.