

Chickens And Eggs

Released January 22, 2008, by the National Agricultural Statistics Service (NASS), Agricultural Statistics Board, U.S. Department of Agriculture. For information on "Layers and Eggs" call Kim Linonis at (202) 690-8632, for "Chicks Hatched" call Sharyn Lavender at (202) 720-3244, office hours 7:30 a.m. to 4:00 p.m. ET.

December Egg Production Down Slightly

U.S. egg production totaled 7.76 billion during December 2007, down slightly from last year. Production included 6.63 billion table eggs, and 1.13 billion hatching eggs, of which 1.06 billion were broiler-type and 67 million were egg-type. The total number of layers during December 2007 averaged 344 million, down 1 percent from last year. December egg production per 100 layers was 2,256 eggs, up 1 percent from December 2006.

All layers in the U.S. on January 1, 2008 totaled 345 million, down 1 percent from last year. The 345 million layers consisted of 285 million layers producing table or market type eggs, 57.2 million layers producing broiler-type hatching eggs, and 2.75 million layers producing egg-type hatching eggs. Rate of lay per day on January 1, 2008, averaged 72.4 eggs per 100 layers, up 2 percent from January 1, 2007.

Egg-Type Chicks Hatched Up 7 Percent

Egg-type chicks hatched during December 2007 totaled 35.5 million, up 7 percent from December 2006. Eggs in incubators totaled 35.8 million on January 1, 2008, up 4 percent from a year ago.

Domestic placements of egg-type pullet chicks for future hatchery supply flocks by leading breeders totaled 245 thousand during December 2007, up 4 percent from December 2006.

Broiler-Type Chicks Hatched Up 3 Percent

Broiler-type chicks hatched during December 2007 totaled 823 million, up 3 percent from December 2006. Eggs in incubators totaled 677 million on January 1, 2008, up 4 percent from a year earlier.

Leading breeders placed 6.75 million broiler-type pullet chicks for future domestic hatchery supply flocks during December 2007, down 6 percent from December 2006.

Contents

	Page
U.S. Average Number of Layers on Hand and Egg Production.....	1
U.S. Layers on Hand and Eggs Produced by Type, Forced Molt, and Pullets.....	3
Layers on Hand and Eggs Produced by State.....	5
Egg Production by Type and State.....	7
Forced Molt	9
Egg-Type Hatchery	11
Egg-Type Intended Placements	13
Broiler-Type Hatchery	13
Broiler-Type Intended Placements.....	15
Procedures and Reliability	16
Information Contacts	16

**All Layers: Average Number on Hand During the Month,
United States, 2006-08**

Month	2006	2007	2008
	<i>1,000 Layers</i>	<i>1,000 Layers</i>	<i>1,000 Layers</i>
Dec ¹	348,810	348,098	344,089
Jan	349,677	347,133	
Feb	350,018	347,079	
Mar	350,470	346,437	
Apr	348,643	343,814	
May	345,223	341,052	
Jun	342,685	339,130	
Jul	341,252	338,892	
Aug	341,540	339,508	
Sep	343,147	339,841	
Oct	344,538	341,494	
Nov ²	346,936	342,974	

¹ December preceding year.

² Revised 2007 only.

**Eggs: Production During the Month by Type,
United States, 2007-08 ¹**

Month	Total Eggs		Table Eggs		Hatching Eggs	
	2007	2008	2007	2008	2007	2008
	<i>Million Eggs</i>	<i>Million Eggs</i>	<i>Million Eggs</i>	<i>Million Eggs</i>	<i>Million Eggs</i>	<i>Million Eggs</i>
Dec ²	7,777	7,763	6,683	6,633	1,094	1,129
Jan	7,637		6,535		1,102	
Feb	6,916		5,918		998	
Mar	7,769		6,646		1,123	
Apr	7,435		6,341		1,094	
May	7,591		6,449		1,143	
Jun	7,355		6,243		1,113	
Jul	7,573		6,435		1,138	
Aug	7,569		6,438		1,131	
Sep	7,370		6,273		1,097	
Oct	7,699		6,567		1,132	
Nov ³	7,513		6,422		1,090	
During Year	90,204		76,950		13,255	

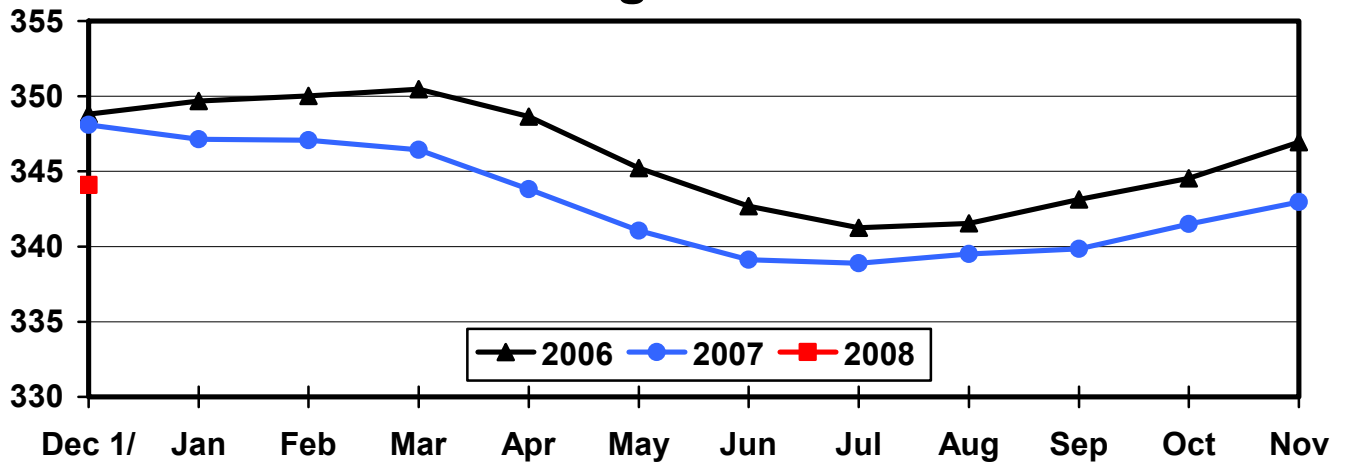
¹ Totals may not add due to rounding.

² December preceding year.

³ Revised 2007 only.

Average Number of Layers United States, 2006 - 2008 During the Month

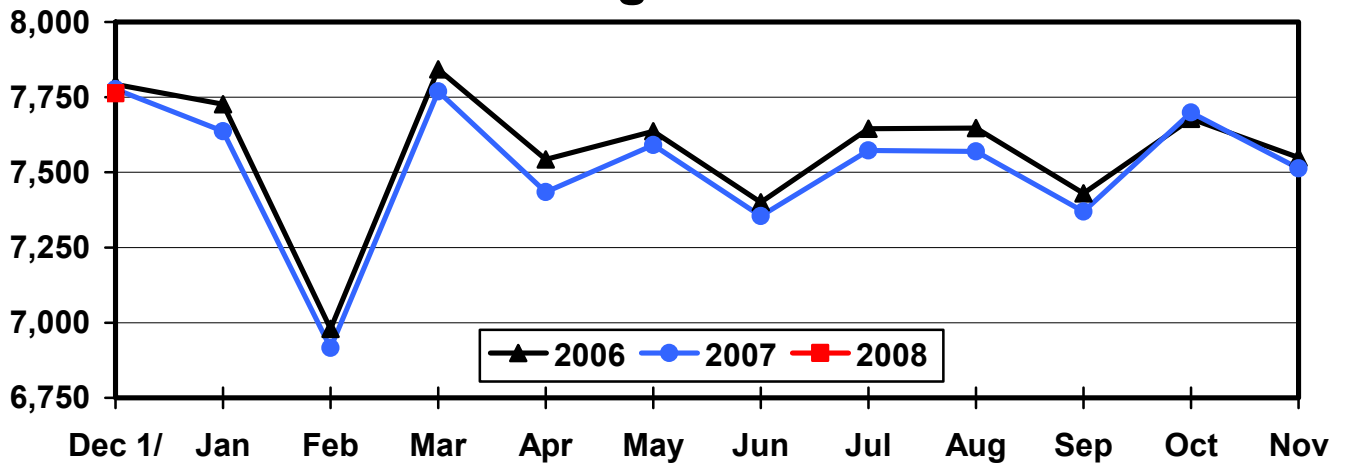
Million Layers



1/ Previous Year

All Egg Production United States, 2006 - 2008 During the Month

Million Eggs



1/ Previous Year

**Layers and Eggs: Layers on Hand and Eggs Produced by Type,
and Forced Molt, United States, November-December 2006-07¹**

Item	Unit	2006	2007 ²	2007 as % of 2006
Layers During Nov	1,000			
All Layers		346,936	342,974	99
Table Egg Type		289,903	284,151	98
Hatching Egg Type		57,033	58,823	103
Broiler-Type Hatching		54,223	55,976	103
Egg-Type Hatching		2,810	2,847	101
Eggs per 100 Layers During Nov	Number			
All Layers		2,176	2,191	101
Table Egg Type		2,244	2,260	101
Hatching Egg Type		1,829	1,853	101
Broiler-Type Hatching		1,806	1,829	101
Egg-Type Hatching		2,278	2,318	102
Eggs Produced During Nov	Million			
All Layers		7,549	7,513	100
Table Egg Type		6,506	6,422	99
Hatching Egg Type		1,043	1,090	105
Broiler-Type Hatching		979	1,024	105
Egg-Type Hatching		64	66	103
Layers on Dec 1	1,000			
All Layers		348,719	343,140	98
Table Egg Type		291,267	284,345	98
Hatching Egg Type		57,452	58,795	102
Broiler-Type Hatching		54,636	55,975	102
Egg-Type Hatching		2,816	2,820	100
Eggs per 100 Layers on Dec 1	Number			
All Layers		72.9	73.1	100
Table Egg Type		75.3	75.5	100
Hatching Egg Type		60.6	61.7	102
Broiler-Type Hatching		59.9	60.8	102
Egg-Type Hatching		75.6	78.6	104
Forced Molt Layers on Dec 1	Percent			
Percent Being Molted		2.2	1.8	82
Percent with Molt Completed		26.6	23.9	90
Layers Sold for Slaughter During Nov	1,000	12,056	11,764	98
Layers Rendered, Died, Destroyed, Composted or Disappeared For Any Reason During Nov	1,000	6,202	5,602	90
Pullets on Dec 1	1,000	96,087	102,623	107
Pullets Added During Nov ³	1,000	21,383	21,608	101

¹ Totals may not add due to rounding.

² Revised.

³ Pullet chicks less than 3 days old added to pullet flocks.

**Layers and Eggs: Layers on Hand and Eggs Produced by Type,
and Forced Molt, United States, December-January 2006-08¹**

Item	Unit	2006	2007	2007 as % of 2006
Layers During Dec	1,000			
All Layers		348,098	344,089	99
Table Egg Type		290,377	284,708	98
Hatching Egg Type		57,721	59,381	103
Broiler-Type Hatching		54,876	56,592	103
Egg-Type Hatching		2,845	2,789	98
Eggs per 100 Layers During Dec	Number			
All Layers		2,234	2,256	101
Table Egg Type		2,301	2,330	101
Hatching Egg Type		1,895	1,901	100
Broiler-Type Hatching		1,873	1,877	100
Egg-Type Hatching		2,320	2,402	104
Eggs Produced During Dec	Million			
All Layers		7,777	7,763	100
Table Egg Type		6,683	6,633	99
Hatching Egg Type		1,094	1,129	103
Broiler-Type Hatching		1,028	1,062	103
Egg-Type Hatching		66	67	102
		2007	2008	2008 as % of 2007
Layers on Jan 1	1,000			
All Layers		347,428	344,997	99
Table Egg Type		289,466	285,050	98
Hatching Egg Type		57,962	59,947	103
Broiler-Type Hatching		55,098	57,199	104
Egg-Type Hatching		2,864	2,748	96
Eggs per 100 Layers on Jan 1	Number			
All Layers		71.1	72.4	102
Table Egg Type		73.1	74.8	102
Hatching Egg Type		61.2	61.0	100
Broiler-Type Hatching		60.4	60.2	100
Egg-Type Hatching		75.0	77.2	103
Forced Molt Layers on Jan 1	Percent			
Percent Being Molted		4.4	2.8	64
Percent with Molt Completed		24.5	22.6	92
Layers Sold for Slaughter During Dec	1,000	12,854	11,542	90
Layers Rendered, Died, Destroyed, Composted or Disappeared For Any Reason During Dec	1,000	7,260	7,054	97
Pullets on Jan 1	1,000	94,747	103,357	109
Pullets Added During Dec ²	1,000	20,521	22,918	112

¹ Totals may not add due to rounding.

² Pullet chicks less than 3 days old added to pullet flocks.

**Layers and Eggs: Layers on Hand and Eggs Produced by State
and United States, During November 2006-07**

State	Table Egg Layers in Flocks 30,000 and Above		All Layers ¹		Eggs per 100 for All Layers ¹	
	2006	2007 ²	2006	2007 ²	2006	2007 ²
	<i>1,000</i>	<i>1,000</i>	<i>1,000</i>	<i>1,000</i>	<i>Number</i>	<i>Number</i>
AL	1,739	1,367	8,872	9,476	1,871	1,889
AR	4,456	4,100	13,920	13,946	1,925	1,943
CA	18,916	19,097	19,405	19,258	2,159	2,150
CO	3,249	3,349	3,746	3,886	2,269	2,342
CT	2,836	2,846	2,897	2,902	2,416	2,309
FL	10,522	10,421	10,967	10,864	2,270	2,191
GA	9,711	9,589	19,392	19,306	2,078	2,082
HI	402	347	417	362	1,751	1,768
IL	4,893	4,927	5,131	5,156	2,300	2,347
IN	23,902	23,366	24,605	24,052	2,223	2,266
IA	51,305	52,548	52,096	53,459	2,209	2,153
ME	3,844	3,813	3,913	3,887	2,147	2,135
MD	2,492	2,653	2,662	2,814	2,216	2,168
MI	8,895	8,866	9,146	9,116	2,307	2,479
MN	10,708	9,894	11,177	10,371	2,192	2,295
MS	1,661	1,580	6,290	6,353	1,971	1,983
MO	6,222	5,655	7,306	6,762	2,190	2,144
NE	11,543	10,101	11,618	10,176	2,238	2,309
NY	3,894	3,776	4,282	4,295	2,312	2,398
NC	3,775	4,922	11,398	12,462	1,965	2,038
OH	26,842	25,833	27,351	26,427	2,132	2,195
OR	2,546	2,413	2,736	2,601	2,522	2,499
PA	22,016	20,285	23,827	21,973	2,304	2,394
SC	3,679	3,350	4,865	4,563	2,199	2,126
SD	3,101	3,093	3,201	3,193	2,124	2,192
TX	14,486	14,581	18,828	19,146	2,273	2,256
VA	1,355	1,409	3,229	3,231	2,075	2,043
WA	4,998	4,647	5,058	4,707	2,155	2,231
WI	4,429	4,227	4,976	4,825	2,231	2,280
Oth Sts ³	15,672	15,264	23,625	23,405	2,154	2,162
US	284,089	278,319	346,936	342,974	2,176	2,191

¹ Includes all layers and eggs produced in both table egg and hatching egg flocks regardless of size.

² Revised.

³ Not published separately to avoid disclosing data for individual operations.

**Layers and Eggs: Layers on Hand and Eggs Produced by State
and United States, During December 2006-07**

State	Table Egg Layers in Flocks 30,000 and Above		All Layers ¹		Eggs per 100 for All Layers ¹	
	2006	2007	2006	2007	2006	2007
	<i>1,000</i>	<i>1,000</i>	<i>1,000</i>	<i>1,000</i>	<i>Number</i>	<i>Number</i>
AL	1,503	1,402	8,615	9,518	1,962	1,944
AR	4,374	4,106	14,066	14,108	1,962	1,963
CA	19,142	19,268	19,615	19,431	2,197	2,239
CO	3,196	3,326	3,721	3,863	2,338	2,382
CT	2,960	2,925	3,015	2,979	2,421	2,383
FL	10,773	10,480	11,271	10,938	2,271	2,267
GA	10,039	9,586	19,791	19,312	2,117	2,133
HI	396	341	409	360	1,809	1,778
IL	4,913	4,935	5,146	5,162	2,312	2,344
IN	23,922	23,316	24,655	24,006	2,275	2,312
IA	51,326	52,991	52,164	53,908	2,220	2,245
ME	3,877	3,816	3,944	3,885	2,155	2,059
MD	2,428	2,587	2,602	2,756	2,306	2,177
MI	8,852	8,903	9,102	9,160	2,351	2,478
MN	10,659	9,782	11,130	10,232	2,291	2,375
MS	1,619	1,621	6,401	6,410	2,047	2,028
MO	6,170	5,621	7,271	6,779	2,256	2,301
NE	11,460	10,171	11,535	10,246	2,315	2,381
NY	3,819	3,708	4,344	4,227	2,486	2,484
NC	3,833	4,965	11,497	12,577	2,088	2,107
OH	27,017	26,228	27,544	26,825	2,305	2,345
OR	2,410	2,469	2,583	2,657	2,555	2,559
PA	22,174	20,370	23,898	22,067	2,381	2,461
SC	3,726	3,264	4,883	4,487	2,253	2,206
SD	3,096	2,992	3,196	3,092	2,159	2,232
TX	14,543	14,320	18,894	19,062	2,276	2,282
VA	1,298	1,399	3,184	3,207	2,104	2,058
WA	4,910	4,645	4,973	4,706	2,272	2,210
WI	4,442	4,194	5,012	4,770	2,374	2,369
Oth Sts ²	15,670	15,141	23,637	23,359	2,196	2,205
US	284,547	278,872	348,098	344,089	2,234	2,256

¹ Includes all layers and eggs produced in both table egg and hatching egg flocks regardless of size.

² Not published separately to avoid disclosing data for individual operations.

**Egg Production: By Type, State, and United States,
November 2006-07¹**

State	Total Production		Table Eggs ²		Hatching Eggs ²	
	2006	2007 ³	2006	2007 ³	2006	2007
	<i>Million Eggs</i>	<i>Million Eggs</i>	<i>Million Eggs</i>	<i>Million Eggs</i>	<i>Million Eggs</i>	<i>Million Eggs</i>
AL	166	179	40	32	126	147
AR	268	271	103	96	165	175
CA	419	414				
CO	85	91				
CT	70	67				
FL	249	238	242	231	7	7
GA	403	402	222	219	181	183
HI	7.3	6.4	7.3	6.4	0	0
IL	118	121	114	118	4	3
IN	547	545	535	533	12	12
IA	1,151	1,151	1,138	1,136	13	15
ME	84	83				
MD	59	61	57	59	2	2
MI	211	226				
MN	245	238	237	229	8	9
MS	124	126	39	39	85	87
MO	160	145				
NE	260	235	260	235	0	0
NY	99	103				
NC	224	254	89	120	135	134
OH	583	580				
OR	69	65	67	63	2	2
PA	549	526	530	507	19	19
SC	107	97	86	76	21	21
SD	68	70	68	70	0	0
TX	428	432				
VA	67	66	34	33	33	33
WA	109	105				
WI	111	110				
Oth Sts ⁴	509	506	388	378	121	128
US	7,549	7,513	6,506	6,422	1,043	1,090

¹ Totals may not add due to rounding.

² Data by type of flock not shown for some States to avoid disclosing individual operations, data included in US totals.

³ Revised.

⁴ Not published separately to avoid disclosing data for individual operations.

**Egg Production: By Type, State, and United States,
December 2006-07 ¹**

State	Total Production		Table Eggs ²		Hatching Eggs ²	
	2006	2007	2006	2007	2006	2007
	<i>Million Eggs</i>	<i>Million Eggs</i>	<i>Million Eggs</i>	<i>Million Eggs</i>	<i>Million Eggs</i>	<i>Million Eggs</i>
AL	169	185	36	33	133	152
AR	276	277	103	96	173	181
CA	431	435				
CO	87	92				
CT	73	71				
FL	256	248	247	240	9	8
GA	419	412	232	225	187	187
HI	7.4	6.4	7.4	6.4	0	0
IL	119	121	115	117	4	4
IN	561	555	548	542	13	13
IA	1,158	1,210	1,145	1,195	13	15
ME	85	80				
MD	60	60	58	58	2	2
MI	214	227				
MN	255	243	247	235	8	8
MS	131	130	40	40	91	90
MO	164	156				
NE	267	244	267	244	0	0
NY	108	105				
NC	240	265	98	123	142	142
OH	635	629				
OR	66	68	64	66	2	2
PA	569	543	549	523	20	20
SC	110	99	89	77	21	22
SD	69	69	69	69	0	0
TX	430	435				
VA	67	66	32	33	35	33
WA	113	104				
WI	119	113				
Oth Sts ³	519	515	394	383	125	132
US	7,777	7,763	6,683	6,633	1,094	1,129

¹ Totals may not add due to rounding.

² Data by type of flock not shown for some States to avoid disclosing individual operations, data included in US totals.

³ Not published separately to avoid disclosing data for individual operations.

**Forced Molt: Percent of All Layers by Month,
United States, 2007-08¹**

Month	Percent Being Molted		Percent with Molt Completed	
	2007	2008	2007	2008
	<i>Percent</i>	<i>Percent</i>	<i>Percent</i>	<i>Percent</i>
Jan	4.4	2.8	24.5	22.6
Feb	3.4		24.4	
Mar	2.9		24.1	
Apr	2.8		23.4	
May	5.4		22.2	
Jun	3.6		24.0	
Jul	4.0		24.1	
Aug	3.4		23.5	
Sep	3.5		24.0	
Oct	3.5		23.6	
Nov	2.6		23.9	
Dec ²	1.8		23.9	

¹ As of first of month.

² Revised 2007 only.

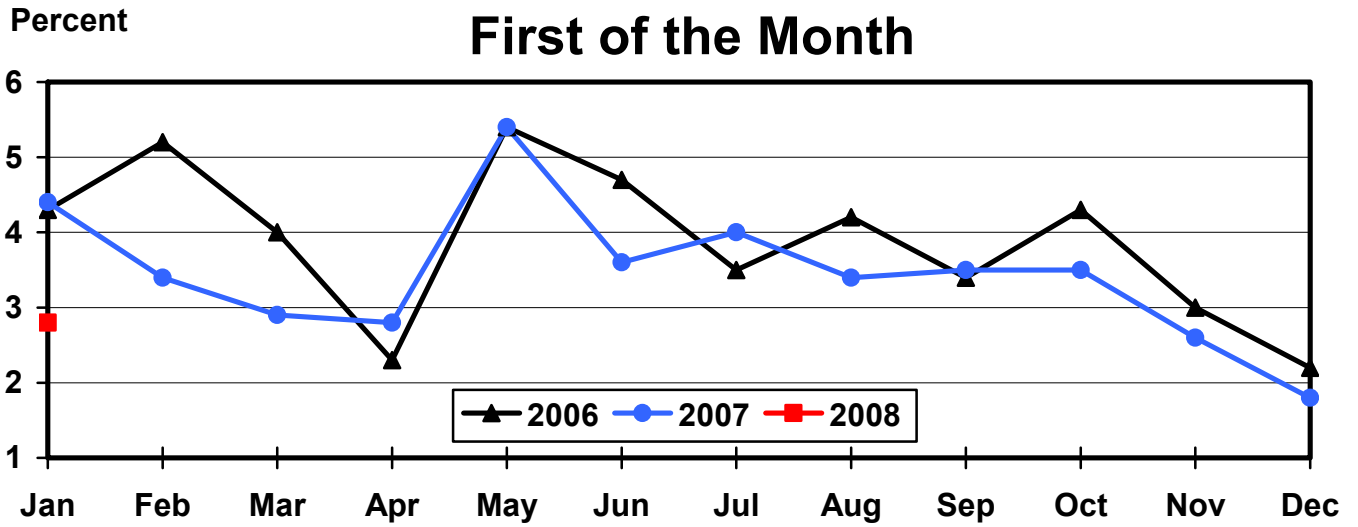
**Forced Molt: Percent of All Layers by State
and United States, January 2007-08¹**

State	Percent Being Molted		Percent with Molt Completed	
	2007	2008	2007	2008
	<i>Percent</i>	<i>Percent</i>	<i>Percent</i>	<i>Percent</i>
AL	1.5	1.0	4.5	6.0
AR	2.5	2.5	11.5	12.5
CA	5.5	9.0	35.0	31.5
CO	3.0	1.5	21.0	17.0
CT	4.0	0.0	13.0	14.5
FL	7.0	3.0	36.0	35.0
GA	4.5	1.5	14.0	14.0
HI	5.5	6.5	65.0	55.0
IL	6.0	2.0	30.5	31.0
IN	4.5	4.0	31.0	32.0
IA	6.5	2.5	35.0	35.0
ME	0.0	0.0	0.0	0.0
MD	5.5	8.0	40.0	11.5
MI	2.0	0.0	33.0	17.5
MN	1.0	2.0	30.5	28.0
MS	3.0	2.0	9.5	9.5
MO	4.0	4.0	18.5	14.5
NE	5.0	0.0	21.0	12.5
NY	1.5	2.5	7.5	6.0
NC	0.0	0.0	10.5	8.1
OH	3.5	2.5	25.5	15.5
OR	6.5	4.0	31.0	26.5
PA	3.5	1.5	14.5	14.5
SC	3.5	2.5	32.0	25.0
SD	5.0	5.0	21.5	18.0
TX	6.5	4.5	23.5	25.0
VA	0.0	0.0	13.0	26.5
WA	9.5	5.0	40.0	43.0
WI	6.5	4.0	22.5	31.5
Oth Sts ²	4.3	2.8	24.0	23.8
US	4.4	2.8	24.5	22.6

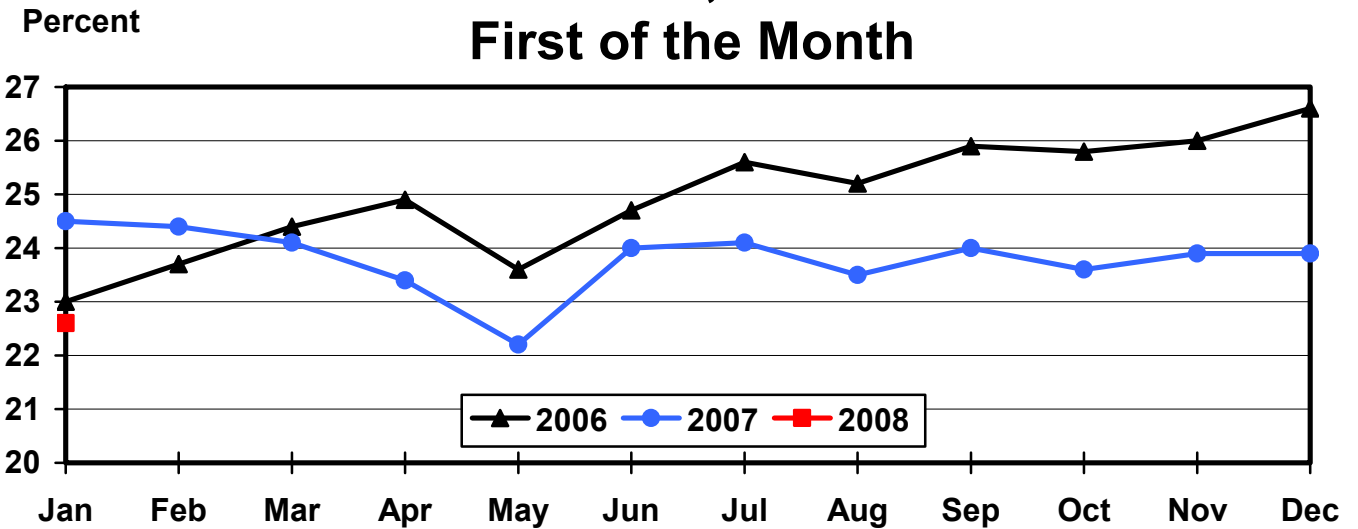
¹ As of first of month.

² Not published separately to avoid disclosing data for individual operations.

All Layers: Percent Being Molted United States, 2006 - 2008



All Layers: Percent Molt Completed United States, 2006 - 2008



**Hatchery Production: Eggs in Incubators, Chicks Hatched,
and Placements by Type, United States, December-January 2007-08**

Item	2007	2008	2008 as % of 2007
	<i>1,000</i>	<i>1,000</i>	<i>Percent</i>
Egg-Type			
Eggs in Incubators on Jan 1	34,383	35,828	104
Chicks Hatched During Dec ¹	33,183	35,543	107
Chicks Hatched Jan thru Dec ¹	426,068	445,400	105
Pullets Hatched During Jan for Intended Placements in Hatchery Supply Flocks ¹	205	245	120
7-18 Month Earlier ^{1,2}	2,847	2,906	102
Broiler-Type			
Eggs in Incubators on Jan 1	652,507	677,028	104
Chicks Hatched During Dec ¹	796,523	823,327	103
Chicks Hatched Jan thru Dec ¹	9,427,550	9,593,788	102
Pullets Hatched During Jan for Intended Placements in Hatchery Supply Flocks ¹	7,176	6,749	94
7-15 Months Earlier ^{1,3}	64,040	64,597	101

¹ Previous year.

² 2008 includes pullet chicks hatched Jun 2006 through May 2007.

³ 2008 includes pullet chicks hatched Sep 2006 through May 2007.

**Egg-Type Eggs in Incubators: By Region and United States,
January 1, 2007-08**

Region	2007	2008	2008 as % of 2007
	<i>1,000</i>	<i>1,000</i>	<i>Percent</i>
North Atlantic	6,167	5,267	85
E North Central	7,146	7,567	106
W North Central	8,005	7,834	98
South Atlantic	3,772	4,886	130
South Central	4,029	5,313	132
West	5,264	4,961	94
US	34,383	35,828	104

Regions:

North Atlantic = CT, ME, MA, NH, NJ, NY, PA, RI, VT.

E North Central = IL, IN, MI, OH, WI.

W North Central = IA, KS, MN, MO, NE, ND, SD.

South Atlantic = DE, FL, GA, MD, NC, SC, VA, WV.

South Central = AL, AR, KY, LA, MS, OK, TN, TX.

West = AK, AZ, CA, CO, HI, ID, MT, NM, NV, OR, UT, WA, WY.

**Egg-Type Chicks Hatched: By State and United States,
December 2006-07**

State	During December			Jan-Dec		
	2006	2007	2007 as % of 2006	2006	2007	2007 as % of 2006
	<i>1,000</i>	<i>1,000</i>	<i>Percent</i>	<i>1,000</i>	<i>1,000</i>	<i>Percent</i>
GA	2,286	2,105	92	26,694	26,283	98
IN	4,934	4,958	100	59,358	63,455	107
IA	5,877	6,804	116	79,677	87,174	109
MN	1,065	991	93	11,783	12,400	105
PA	4,447	4,342	98	52,672	53,507	102
Oth Sts ¹	14,574	16,343	112	195,884	202,581	103
US	33,183	35,543	107	426,068	445,400	105

¹ Not published separately to avoid disclosing data for individual operations.

Egg-Type Chicks Hatched: By Month, United States, 2006-07

Month	By Months			Cumulative		
	2006	2007	2007 as % of 2006	2006	2007	2007 as % of 2006
	<i>1,000</i>	<i>1,000</i>	<i>Percent</i>	<i>1,000</i>	<i>1,000</i>	<i>Percent</i>
Jan	35,159	36,926	105	35,159	36,926	105
Feb	33,409	36,766	110	68,568	73,692	107
Mar	38,805	40,537	104	107,373	114,229	106
Apr	35,435	39,704	112	142,808	153,933	108
May	39,744	38,498	97	182,552	192,431	105
Jun	37,406	40,005	107	219,958	232,436	106
Jul	32,727	35,560	109	252,685	267,996	106
Aug	35,611	36,838	103	288,296	304,834	106
Sep	36,873	35,270	96	325,169	340,104	105
Oct	36,162	35,767	99	361,331	375,871	104
Nov	31,554	33,986	108	392,885	409,857	104
Dec	33,183	35,543	107	426,068	445,400	105

**Intended Placements: Egg-Type Pullet Chicks for Hatchery Supply
Flocks by Month and Total, United States, 2006-07¹**

Month	Pullet Chicks Hatched		2007 as % of 2006	Cumulative Potential Plcmts Relative to Current Supply Flocks 7-18 Months Earlier ²	
	2006	2007		2007	2008
	<i>1,000</i>	<i>1,000</i>	<i>Percent</i>	<i>1,000</i>	<i>1,000</i>
Jan	223	265	119	2,870	3,008
Feb	200	166	83	2,947	2,872
Mar	261	316	121	2,970	2,866
Apr	254	274	108	2,855	2,906
May	241	191	79	2,889	2,868
Jun	198	300	152	2,915	2,943
Jul	319	183	57	2,873	2,983
Aug	284	278	98	2,915	
Sep	260	300	115	2,881	
Oct	222	184	83	2,936	
Nov	206	281	136	2,956	
Dec	205	245	120	2,906	
Total	2,873	2,983	104		

¹ Reported by leading breeders. Coverage may not be 100 percent. Includes expected pullet chicks from eggs sold during the preceding month at the rate of 125 pullet chicks per 30 dozen case of eggs.

² For December 2007, includes breeder pullet chicks hatched Jun 2006 through May 2007. The 7-18 months represent the first laying cycle. Molting and additional laying cycles will increase the cumulative potential placements.

**Broiler-Type Eggs in Incubators: By Region
and United States, January 1, 2007-08**

Region	2007	2008	2008 as % of 2007
	<i>1,000</i>	<i>1,000</i>	<i>Percent</i>
North Atlantic	11,775	12,863	109
E North Central	9,801	11,159	114
W North Central	22,991	29,884	130
South Atlantic	244,091	253,234	104
South Central	338,741	345,610	102
West	25,108	24,278	97
US	652,507	677,028	104

**Broiler-Type Chicks Hatched: By State
and United States, December 2006-07**

State	During December			Jan-Dec		
	2006	2007	2007 as % of 2006	2006	2007	2007 as % of 2006
	<i>1,000</i>	<i>1,000</i>	<i>Percent</i>	<i>1,000</i>	<i>1,000</i>	<i>Percent</i>
AL	112,745	119,224	106	1,352,035	1,352,076	100
AR	101,650	105,698	104	1,216,464	1,215,967	100
DE	14,428	15,302	106	167,605	177,714	106
FL	4,874	4,974	102	58,982	59,329	101
GA	127,168	128,705	101	1,481,283	1,517,531	102
KY	26,818	27,650	103	307,845	326,906	106
LA	13,837	14,469	105	172,294	170,041	99
MD	31,019	31,349	101	374,867	373,427	100
MS	64,813	69,754	108	782,576	813,608	104
NC	68,974	72,070	104	803,060	839,734	105
OK	23,635	22,955	97	274,739	283,128	103
PA	14,715	15,258	104	168,553	171,330	102
SC	19,514	19,468	100	225,856	233,081	103
TX	53,075	56,001	106	646,171	647,060	100
VA	22,997	23,372	102	275,388	274,666	100
CA, MO, TN, & WV	73,326	73,343	100	847,189	855,022	101
19 Sts ¹	773,588	799,592	103	9,154,907	9,310,620	102
Oth Sts ²	22,935	23,735	103	272,643	283,168	104
US	796,523	823,327	103	9,427,550	9,593,788	102

¹ States in the weekly hatchery production estimating program.

² Not published separately to avoid disclosing data for individual operations.

Broiler-Type Chicks Hatched: By Month, United States, 2006-07

Month	By Months			Cumulative		
	2006	2007	2007 as % of 2006	2006	2007	2007 as % of 2006
	<i>1,000</i>	<i>1,000</i>	<i>Percent</i>	<i>1,000</i>	<i>1,000</i>	<i>Percent</i>
Jan	804,801	797,066	99	804,801	797,066	99
Feb	733,425	723,753	99	1,538,226	1,520,819	99
Mar	817,842	810,732	99	2,356,068	2,331,551	99
Apr	787,457	800,524	102	3,143,525	3,132,075	100
May	812,137	837,386	103	3,955,662	3,969,461	100
Jun	788,652	810,419	103	4,744,314	4,779,880	101
Jul	801,537	820,865	102	5,545,851	5,600,745	101
Aug	810,030	828,788	102	6,355,881	6,429,533	101
Sep	772,258	784,155	102	7,128,139	7,213,688	101
Oct	772,942	795,371	103	7,901,081	8,009,059	101
Nov	729,946	761,402	104	8,631,027	8,770,461	102
Dec	796,523	823,327	103	9,427,550	9,593,788	102

**Intended Placements: Broiler-Type Pullet Chicks for Hatchery
Supply Flocks by Month and Total, 2006-07 ¹**

Month	Pullet Chicks Hatched		2007 as % of 2006	Cumulative Potential Plcmts Relative to Current Supply Flocks 7-15 Months Earlier ²	
	2006	2007		2007	2008
	<i>1,000</i>	<i>1,000</i>	<i>Percent</i>	<i>1,000</i>	<i>1,000</i>
US Place- ments					
Jan	6,825	7,015	103	64,544	65,333
Feb	7,593	7,071	93	64,056	65,407
Mar	7,012	7,135	102	64,389	65,581
Apr	6,593	6,692	102	64,340	65,732
May	7,531	8,083	107	64,259	65,687
Jun	7,636	7,799	102	64,284	66,054
Jul	6,456	6,818	106	64,448	65,668
Aug	7,631	7,792	102	64,870	
Sep	7,063	7,327	104	64,410	
Oct	6,744	6,970	103	63,909	
Nov	7,618	7,438	98	64,145	
Dec	7,176	6,749	94	64,597	
Annual Total	85,878	86,889	101		
Total Place- ments ³					
Jan	8,018	8,772	109		
Feb	9,026	8,811	98		
Mar	8,415	9,025	107		
Apr	7,558	8,358	111		
May	8,930	9,780	110		
Jun	9,144	9,435	103		
Jul	7,845	8,370	107		
Aug	9,170	9,466	103		
Sep	8,742	9,070	104		
Oct	8,028	9,076	113		
Nov	9,550	9,614	101		
Dec	8,700	8,549	98		
Annual Total	103,126	108,326	105		

¹ Reported by leading breeders. Coverage may not be 100 percent. Includes expected pullet chicks from eggs sold during the preceding month at the rate of 125 pullet chicks per 30 dozen case of eggs.

² For Dec 2007, includes breeder pullet chicks hatched Sep 2006 through May 2007.

³ U.S. production of intended placements worldwide.

Reliability of Chicken and Eggs Estimates

Survey Procedures: Primary data for the "**Chickens and Eggs**" report are from weekly and/or monthly questionnaires sent to producers. An attempt is made to collect information for layer and egg estimates from each known contractor and independent producer who has at least 30,000 table egg layers, flocks of hatchery supply layers, or pullet only operations with at least 500 pullets. Coverage for operations with less than 30,000 table egg layers are estimated each month based on data reported in December. Approximately 650 contractors, independent egg producers, and pullet only operations are contacted each month. All known hatcheries, approximately 300, are contacted for information on a weekly and/or monthly basis.

Estimating Procedures: Sound statistical methodology is employed to derive estimates from the reported data. All data are checked for unusual values. Data from each operation are compared to their own past operating profile and to trends from similar operations. Data for missing operations are estimated based on similar operations or historical data. NASS field offices prepare these estimates by using a combination of survey indications and historic trends. Individual State estimates are reviewed by the Agricultural Statistics Board for reasonableness. Individual hatchery data are summed to State, regional, and U.S. totals.

For chicken hatcheries, chicks hatched consist of all chicks of domesticated breeds including males and chicks destined for hatchery supply flocks and research purposes. Eggs set are eggs in incubators for the purpose of hatching. The relationship of egg-type chicks hatched to chicken inventory and poultry marketings are carefully monitored. The disposition of egg-type chicks hatched prior to placement into the laying flock can vary significantly, which can make comparisons to changes in layer inventory inconsistent over time. Broiler chicks placed are specifically placed on feed for meat production. Intended placement data reported by leading breeders include pullet chicks expected from eggs sold the preceding month. The breeders in this report account for a large percentage of replacement pullets for hatchery supply flocks. Production of replacement pullets by these breeders indicates the number of pullets available to hatchery supply flocks several months before the pullets will actually move into the flocks. "Hatchery Supply Flocks" include all generations of layers which could lay eggs to supply a hatchery. This includes the generations of parents, grandparents, great-grandparents, pedigree, etc. Also included are research flocks, vaccine flocks, and specific pathogen-free flocks. The broiler cumulative potential placements are a moving total of the intended placements 7-15 months earlier. The egg-type cumulative potential placements of 7-18 months represent the first laying cycle. Molting and additional laying cycles will increase the cumulative potential placements of egg-type hatching flocks.

Revision Policy: The previous month's estimates are subject to revision if late reports or corrected data indicates a different level. Additionally, revisions after the monthly report will be made at the end of the marketing year and published in the annual reports of "**Chickens and Eggs Summary**" and "**Hatchery Production**".

Reliability: Estimates are based on a census of all known contractors and independent producers who have at least 30,000 table egg layers, flocks of hatchery supply layers, pullet only operations with at least 500 pullets, or operating hatcheries and therefore, have no sampling error. However, estimates are subject to errors such as omission, duplication, and mistakes in reporting, recording, and processing the data. While these errors cannot be measured directly, they are minimized through strict quality controls in the data collection process and a careful review of all reported data for consistency and reasonableness.

Information Contacts

Listed below are the commodity specialists in the Livestock Branch of the National Agricultural Statistics Service to contact for additional information.

Dan Kerestes, Chief, Livestock Branch	(202) 720-3570
Darin Jantzi, Head, Poultry and Specialty Commodities Section	(202) 720-3570
David Colwell - Cold Storage	(202) 720-8784
Fleming Gibson - Egg Products, Poultry Slaughter, Catfish Processing, Mink	(202) 690-3237
Sharyn Lavender - Broiler Hatchery, Chicken Hatchery, Honey	(202) 720-3244
Kim Linonis - Layers, Eggs	(202) 690-8632
Toby Paterson - Catfish Production, Trout Production, Census of Aquaculture, Turkey Hatchery, Turkeys Raised	(202) 720-0585

ACCESS TO REPORTS!!

For your convenience, there are several ways to obtain NASS reports, data products, and services:

INTERNET ACCESS

All NASS reports are available free of charge on the worldwide Internet. For access, connect to the Internet and go to the NASS Home Page at: **www.nass.usda.gov**.

E-MAIL SUBSCRIPTION

All NASS reports are available by subscription free of charge direct to your e-mail address. Starting with the NASS Home Page at **www.nass.usda.gov**, under the right navigation, *Receive reports by Email*, click on **National** or **State**. Follow the instructions on the screen.

PRINTED REPORTS OR DATA PRODUCTS

CALL OUR TOLL-FREE ORDER DESK: 800-999-6779 (U.S. and Canada)
Other areas, please call 703-605-6220 FAX: 703-605-6900
(Visa, MasterCard, check, or money order acceptable for payment.)

ASSISTANCE

For **assistance** with general agricultural statistics or further information about NASS or its products or services, contact the **Agricultural Statistics Hotline** at **800-727-9540**, 7:30 a.m. to 4:00 p.m. ET, or e-mail: **nass@nass.usda.gov**.

The U.S. Department of Agriculture (USDA) prohibits discrimination in all its programs and activities on the basis of race, color, national origin, age, disability, and where applicable, sex, marital status, familial status, parental status, religion, sexual orientation, genetic information, political beliefs, reprisal, or because all or a part of an individual's income is derived from any public assistance program. (Not all prohibited bases apply to all programs.) Persons with disabilities who require alternative means for communication of program information (Braille, large print, audiotape, etc.) should contact USDA's TARGET Center at (202) 720-2600 (voice and TDD).

To file a complaint of discrimination, write to USDA, Director, Office of Civil Rights, 1400 Independence Avenue, S.W., Washington, D.C. 20250-9410, or call (800) 795-3272 (voice) or (202) 720-6382 (TDD). USDA is an equal opportunity provider and employer.