

Chickens And Eggs

Released February 29, 2008, by the National Agricultural Statistics Service (NASS), Agricultural Statistics Board, U.S. Department of Agriculture. For information on "Layers and Eggs" call Kim Linonis at (202) 690-8632, for "Chicks Hatched" call Sharyn Lavender at (202) 720-3244, office hours 7:30 a.m. to 4:00 p.m. ET.

January Egg Production Down Slightly

U.S. egg production totaled 7.66 billion during January 2008, down slightly from last year. Production included 6.52 billion table eggs, and 1.14 billion hatching eggs, of which 1.07 billion were broiler-type and 67 million were egg-type. The total number of layers during January 2008 averaged 345 million, down 1 percent from last year. January egg production per 100 layers was 2,220 eggs, up 1 percent from January 2007.

All layers in the U.S. on February 1, 2008 totaled 345 million, down 1 percent from last year. The 345 million layers consisted of 284 million layers producing table or market type eggs, 57.7 million layers producing broiler-type hatching eggs, and 2.84 million layers producing egg-type hatching eggs. Rate of lay per day on February 1, 2008, averaged 70.8 eggs per 100 layers, up slightly from February 1, 2007.

Egg-Type Chicks Hatched Up 9 Percent

Egg-type chicks hatched during January 2008 totaled 40.2 million, up 9 percent from January 2007. Eggs in incubators totaled 35.5 million on February 1, 2008, down 4 percent from a year ago.

Domestic placements of egg-type pullet chicks for future hatchery supply flocks by leading breeders totaled 210 thousand during January 2008, down 21 percent from January 2007.

Broiler-Type Chicks Hatched Up 3 Percent

Broiler-type chicks hatched during January 2008 totaled 822 million, up 3 percent from January 2007. Eggs in incubators totaled 675 million on February 1, 2008, up 4 percent from a year earlier.

Leading breeders placed 7.30 million broiler-type pullet chicks for future domestic hatchery supply flocks during January 2008, up 4 percent from January 2007.

Contents

Page

U.S. Average Number of Layers on Hand and Egg Production.....	1
U.S. Layers on Hand and Eggs Produced by Type, Forced Molt, and Pullets.....	3
Layers on Hand and Eggs Produced by State.....	5
Egg Production by Type and State.....	7
Forced Molt	9
Egg-Type Hatchery	11
Egg-Type Intended Placements	13
Broiler-Type Hatchery	13
Broiler-Type Intended Placements.....	15
Procedures and Reliability	16
Information Contacts	16

**All Layers: Average Number on Hand During the Month,
United States, 2006-08**

Month	2006	2007	2008
	<i>1,000 Layers</i>	<i>1,000 Layers</i>	<i>1,000 Layers</i>
Dec ^{1 2}	349,699	349,862	344,965
Jan	351,313	348,897	345,105
Feb	351,754	348,843	
Mar	352,116	348,201	
Apr	350,398	345,578	
May	347,069	342,469	
Jun	344,631	340,237	
Jul	343,285	340,035	
Aug	343,611	340,651	
Sep	345,217	340,984	
Oct	346,608	342,637	
Nov	348,853	344,229	

¹ December preceding year.

² Revised 2008 only.

**Eggs: Production During the Month by Type,
United States, 2007-08 ¹**

Month	Total Eggs		Table Eggs		Hatching Eggs	
	2007	2008	2007	2008	2007	2008
	<i>Million Eggs</i>	<i>Million Eggs</i>	<i>Million Eggs</i>	<i>Million Eggs</i>	<i>Million Eggs</i>	<i>Million Eggs</i>
Dec ^{2 3}	7,815	7,784	6,709	6,654	1,106	1,129
Jan	7,675	7,663	6,561	6,524	1,114	1,139
Feb	6,951		5,943		1,008	
Mar	7,806		6,672		1,134	
Apr	7,472		6,367		1,105	
May	7,622		6,475		1,148	
Jun	7,380		6,268		1,113	
Jul	7,599		6,461		1,138	
Aug	7,594		6,463		1,131	
Sep	7,393		6,296		1,097	
Oct	7,726		6,594		1,132	
Nov	7,542		6,451		1,090	
During Year	90,581		77,266		13,317	

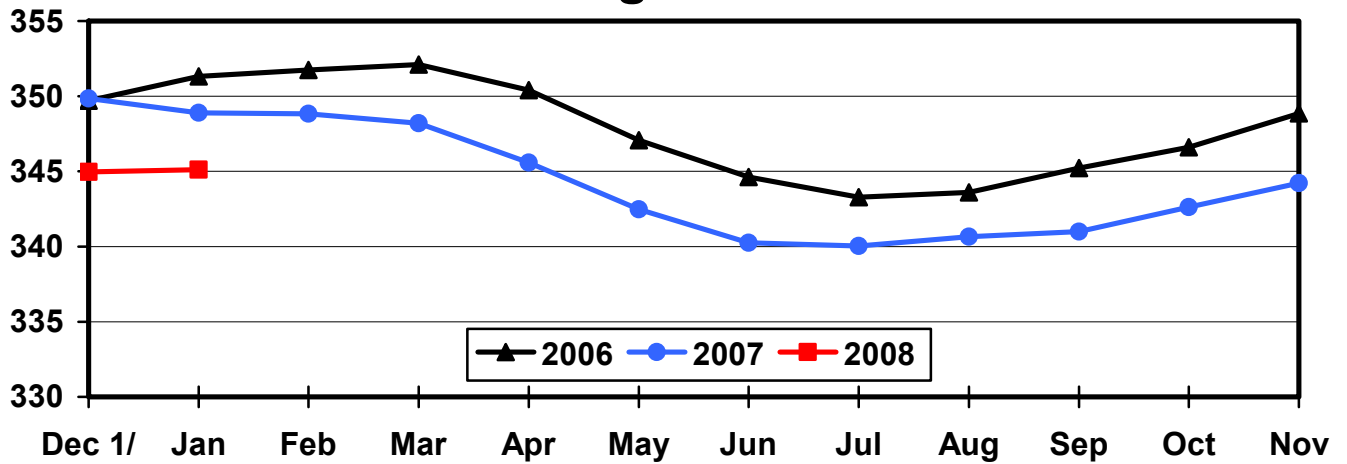
¹ Totals may not add due to rounding.

² December preceding year.

³ Revised 2008 only.

Average Number of Layers United States, 2006 - 2008 During the Month

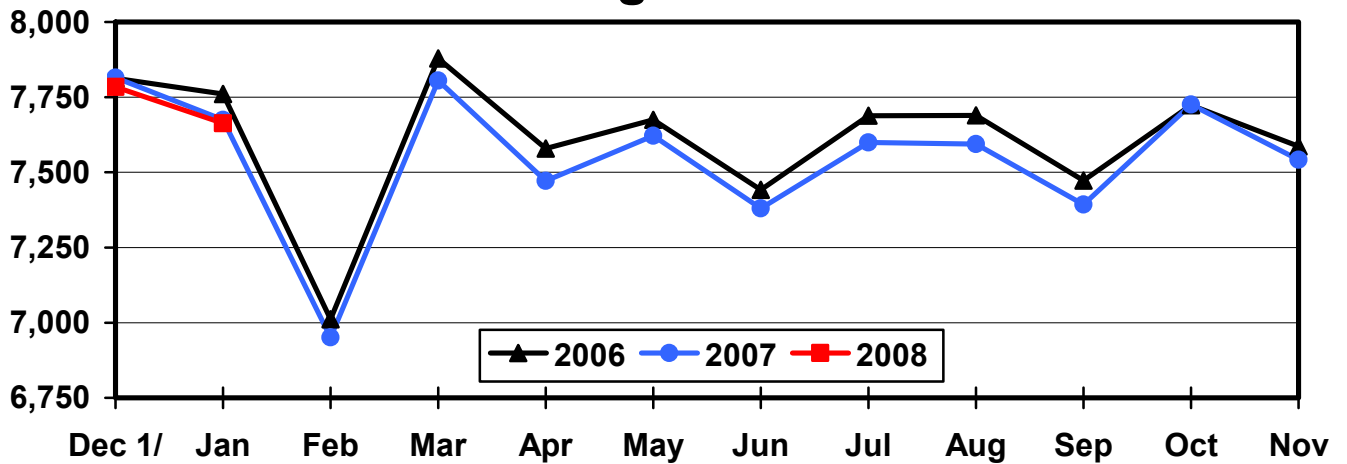
Million Layers



1/ Previous Year

All Egg Production United States, 2006 - 2008 During the Month

Million Eggs



1/ Previous Year

**Layers and Eggs: Layers on Hand and Eggs Produced by Type,
and Forced Molt, United States, December-January 2006-08¹**

Item	Unit	2006	2007 ²	2007 as % of 2006
Layers During Dec	1,000			
All Layers		349,862	344,965	99
Table Egg Type		291,520	285,566	98
Hatching Egg Type		58,342	59,399	102
Broiler-Type Hatching		55,497	56,610	102
Egg-Type Hatching		2,845	2,789	98
Eggs per 100 Layers During Dec	Number			
All Layers		2,234	2,256	101
Table Egg Type		2,301	2,330	101
Hatching Egg Type		1,896	1,901	100
Broiler-Type Hatching		1,874	1,876	100
Egg-Type Hatching		2,320	2,402	104
Eggs Produced During Dec	Million			
All Layers		7,815	7,784	100
Table Egg Type		6,709	6,654	99
Hatching Egg Type		1,106	1,129	102
Broiler-Type Hatching		1,040	1,062	102
Egg-Type Hatching		66	67	102
		2007	2008	2008 as % of 2007
Layers on Jan 1	1,000			
All Layers		349,192	345,398	99
Table Egg Type		290,609	285,435	98
Hatching Egg Type		58,583	59,963	102
Broiler-Type Hatching		55,719	57,215	103
Egg-Type Hatching		2,864	2,748	96
Eggs per 100 Layers on Jan 1	Number			
All Layers		71.1	72.4	102
Table Egg Type		73.1	74.7	102
Hatching Egg Type		61.2	61.0	100
Broiler-Type Hatching		60.5	60.2	100
Egg-Type Hatching		75.0	77.2	103
Forced Molt Layers on Jan 1	Percent			
Percent Being Molted		4.4	2.8	64
Percent with Molt Completed		24.5	22.8	93
Layers Sold for Slaughter During Dec	1,000	12,861	11,430	89
Layers Rendered, Died, Destroyed, Composted or Disappeared For Any Reason During Dec	1,000	7,316	7,122	97
Pullets on Jan 1	1,000	95,175	102,978	108
Pullets Added During Dec ³	1,000	20,643	22,946	111

¹ Totals may not add due to rounding.

² Revised.

³ Pullet chicks less than 3 days old added to pullet flocks.

**Layers and Eggs: Layers on Hand and Eggs Produced by Type,
and Forced Molt, United States, January-February 2007-08¹**

Item	Unit	2007	2008	2008 as % of 2007
Layers During Jan	1,000			
All Layers		348,897	345,105	99
Table Egg Type		290,038	284,823	98
Hatching Egg Type		58,859	60,282	102
Broiler-Type Hatching		56,011	57,485	103
Egg-Type Hatching		2,848	2,797	98
Eggs per 100 Layers During Jan	Number			
All Layers		2,200	2,220	101
Table Egg Type		2,262	2,291	101
Hatching Egg Type		1,893	1,889	100
Broiler-Type Hatching		1,869	1,865	100
Egg-Type Hatching		2,353	2,395	102
Eggs Produced During Jan	Million			
All Layers		7,675	7,663	100
Table Egg Type		6,561	6,524	99
Hatching Egg Type		1,114	1,139	102
Broiler-Type Hatching		1,047	1,072	102
Egg-Type Hatching		67	67	100
Layers on Feb 1	1,000			
All Layers		348,563	344,764	99
Table Egg Type		289,447	284,188	98
Hatching Egg Type		59,116	60,576	102
Broiler-Type Hatching		56,289	57,740	103
Egg-Type Hatching		2,827	2,836	100
Eggs per 100 Layers on Feb 1	Number			
All Layers		70.6	70.8	100
Table Egg Type		72.7	73.0	100
Hatching Egg Type		60.4	60.5	100
Broiler-Type Hatching		59.5	59.6	100
Egg-Type Hatching		78.2	77.1	99
Forced Molt Layers on Feb 1	Percent			
Percent Being Molted		3.4	3.8	112
Percent with Molt Completed		24.4	21.9	90
Layers Sold for Slaughter During Jan	1,000	12,736	14,580	114
Layers Rendered, Died, Destroyed, Composted or Disappeared For Any Reason During Jan	1,000	7,485	7,097	95
Pullets on Feb 1	1,000	96,395	103,146	107
Pullets Added During Jan ²	1,000	22,662	21,591	95

¹ Totals may not add due to rounding.

² Pullet chicks less than 3 days old added to pullet flocks.

**Layers and Eggs: Layers on Hand and Eggs Produced by State
and United States, During December 2006-07**

State	Table Egg Layers in Flocks 30,000 and Above		All Layers ¹		Eggs per 100 for All Layers ¹	
	2006	2007 ²	2006	2007 ²	2006	2007 ²
	<i>1,000</i>	<i>1,000</i>	<i>1,000</i>	<i>1,000</i>	<i>Number</i>	<i>Number</i>
AL	1,503	1,402	9,236	9,526	1,960	1,942
AR	4,374	4,106	14,066	14,108	1,962	1,963
CA	19,142	19,268	19,615	19,476	2,197	2,239
CO	3,196	3,326	3,721	3,863	2,338	2,382
CT	2,960	2,925	3,015	2,980	2,421	2,383
FL	10,773	10,480	11,271	10,948	2,271	2,274
GA	10,039	9,586	19,791	19,312	2,117	2,133
HI	396	341	409	360	1,809	1,778
IL	4,913	4,935	5,146	5,162	2,312	2,344
IN	24,517	23,613	25,250	24,351	2,277	2,308
IA	51,326	53,082	52,164	53,984	2,220	2,245
ME	3,877	3,816	3,944	3,888	2,155	2,058
MD	2,428	2,587	2,602	2,756	2,306	2,177
MI	8,852	8,900	9,102	9,107	2,351	2,482
MN	10,659	9,782	11,130	10,232	2,291	2,375
MS	1,619	1,621	6,401	6,410	2,047	2,028
MO	6,170	5,621	7,271	6,779	2,256	2,301
NE	11,460	10,171	11,535	10,246	2,315	2,381
NY	3,819	3,708	4,038	3,921	2,501	2,499
NC	3,833	4,965	11,497	12,566	2,088	2,109
OH	27,017	26,228	27,544	26,825	2,305	2,345
OR	2,410	2,469	2,583	2,657	2,555	2,559
PA	22,174	20,439	23,898	21,836	2,381	2,464
SC	3,726	3,264	4,883	4,492	2,253	2,204
SD	3,096	2,992	3,196	3,017	2,159	2,254
TX	14,543	14,315	18,894	19,157	2,276	2,281
VA	1,298	1,399	3,184	3,207	2,104	2,058
WA	5,764	5,499	5,827	5,560	2,265	2,212
WI	4,442	4,194	5,012	4,770	2,374	2,369
Oth Sts ³	15,670	15,185	23,637	23,469	2,196	2,207
US	285,996	280,219	349,862	344,965	2,234	2,256

¹ Includes all layers and eggs produced in both table egg and hatching egg flocks regardless of size.

² Revised.

³ Not published separately to avoid disclosing data for individual operations.

**Layers and Eggs: Layers on Hand and Eggs Produced by State
and United States, During January 2007-08**

State	Table Egg Layers in Flocks 30,000 and Above		All Layers ¹		Eggs per 100 for All Layers ¹	
	2007	2008	2007	2008	2007	2008
	<i>1,000</i>	<i>1,000</i>	<i>1,000</i>	<i>1,000</i>	<i>Number</i>	<i>Number</i>
AL	1,228	1,380	8,957	9,581	1,954	1,931
AR	4,430	4,022	14,253	14,313	1,894	1,893
CA	19,134	18,728	19,610	18,938	2,132	2,165
CO	3,244	3,385	3,776	3,927	2,331	2,368
CT	2,929	2,875	2,982	2,927	2,381	2,289
FL	10,809	10,405	11,315	10,907	2,227	2,283
GA	10,089	9,606	19,881	19,433	2,062	2,094
HI	391	338	403	361	1,811	1,801
IL	4,831	5,090	5,062	5,317	2,292	2,257
IN	24,380	23,663	25,093	24,401	2,232	2,238
IA	50,889	53,459	51,784	54,395	2,169	2,250
ME	3,931	3,994	3,997	4,066	2,077	2,115
MD	2,530	2,561	2,676	2,703	2,242	2,220
MI	8,644	8,868	8,901	9,082	2,337	2,400
MN	10,597	9,769	11,064	10,243	2,296	2,343
MS	1,600	1,614	6,579	6,435	2,006	1,974
MO	6,154	5,524	7,306	6,730	2,231	2,348
NE	11,380	10,182	11,455	10,257	2,313	2,369
NY	3,789	3,672	4,008	3,890	2,420	2,468
NC	4,025	5,059	11,688	12,842	2,053	2,064
OH	26,668	25,950	27,194	26,552	2,306	2,294
OR	2,340	2,498	2,498	2,679	2,442	2,538
PA	21,887	20,415	23,585	21,817	2,396	2,429
SC	3,633	3,307	4,762	4,543	2,163	2,113
SD	3,091	2,896	3,191	2,921	2,194	2,191
TX	14,679	14,005	19,089	18,947	2,216	2,222
VA	1,312	1,345	3,176	3,167	2,078	1,958
WA	5,692	5,450	5,758	5,516	2,327	2,212
WI	4,375	4,312	4,933	4,862	2,392	2,283
Oth Sts ²	15,834	15,100	23,921	23,353	2,157	2,175
US	284,515	279,472	348,897	345,105	2,200	2,220

¹ Includes all layers and eggs produced in both table egg and hatching egg flocks regardless of size.

² Not published separately to avoid disclosing data for individual operations.

**Egg Production: By Type, State, and United States,
December 2006-07¹**

State	Total Production		Table Eggs ²		Hatching Eggs ²	
	2006	2007 ³	2006	2007 ³	2006	2007
	<i>Million Eggs</i>	<i>Million Eggs</i>	<i>Million Eggs</i>	<i>Million Eggs</i>	<i>Million Eggs</i>	<i>Million Eggs</i>
AL	181	185	36	33	145	152
AR	276	277	103	96	173	181
CA	431	436				
CO	87	92				
CT	73	71				
FL	256	249	247	241	9	8
GA	419	412	232	225	187	187
HI	7.4	6.4	7.4	6.4	0	0
IL	119	121	115	117	4	4
IN	575	562	562	549	13	13
IA	1,158	1,212	1,145	1,197	13	15
ME	85	80				
MD	60	60	58	58	2	2
MI	214	226				
MN	255	243	247	235	8	8
MS	131	130	40	40	91	90
MO	164	156				
NE	267	244	267	244	0	0
NY	101	98				
NC	240	265	98	123	142	142
OH	635	629				
OR	66	68	64	66	2	2
PA	569	538	549	518	20	20
SC	110	99	89	77	21	22
SD	69	68	69	68	0	0
TX	430	437				
VA	67	66	32	33	35	33
WA	132	123				
WI	119	113				
Oth Sts ⁴	519	518	394	386	125	132
US	7,815	7,784	6,709	6,654	1,106	1,129

¹ Totals may not add due to rounding.

² Data by type of flock not shown for some States to avoid disclosing individual operations, data included in US totals.

³ Revised.

⁴ Not published separately to avoid disclosing data for individual operations.

**Egg Production: By Type, State, and United States,
January 2007-08 ¹**

State	Total Production		Table Eggs ²		Hatching Eggs ²	
	2007	2008	2007	2008	2007	2008
	<i>Million Eggs</i>	<i>Million Eggs</i>	<i>Million Eggs</i>	<i>Million Eggs</i>	<i>Million Eggs</i>	<i>Million Eggs</i>
AL	175	185	29	32	146	153
AR	270	271	96	87	174	184
CA	418	410				
CO	88	93				
CT	71	67				
FL	252	249	243	239	9	10
GA	410	407	223	218	187	189
HI	7.3	6.5	7.3	6.5	0	0
IL	116	120	112	116	4	4
IN	560	546	547	533	13	13
IA	1,123	1,224	1,109	1,209	14	15
ME	83	86				
MD	60	60	58	58	2	2
MI	208	218				
MN	254	240	246	232	8	8
MS	132	127	38	37	94	90
MO	163	158				
NE	265	243	265	243	0	0
NY	97	96				
NC	240	265	99	124	141	141
OH	627	609				
OR	61	68	59	66	2	2
PA	565	530	545	510	20	20
SC	103	96	82	74	21	22
SD	70	64	70	64	0	0
TX	423	421				
VA	66	62	31	30	35	32
WA	134	122				
WI	118	111				
Oth Sts ³	516	508	390	378	126	130
US	7,675	7,663	6,561	6,524	1,114	1,139

¹ Totals may not add due to rounding.

² Data by type of flock not shown for some States to avoid disclosing individual operations, data included in US totals.

³ Not published separately to avoid disclosing data for individual operations.

**Forced Molt: Percent of All Layers by Month,
United States, 2007-08¹**

Month	Percent Being Molted		Percent with Molt Completed	
	2007	2008	2007	2008
	<i>Percent</i>	<i>Percent</i>	<i>Percent</i>	<i>Percent</i>
Jan ²	4.4	2.8	24.5	22.8
Feb	3.4	3.8	24.4	21.9
Mar	2.9		24.2	
Apr	2.8		23.5	
May	5.4		22.2	
Jun	3.6		24.1	
Jul	4.0		24.2	
Aug	3.4		23.6	
Sep	3.5		24.1	
Oct	3.5		23.7	
Nov	2.6		24.0	
Dec	1.8		23.9	

¹ As of first of month.

² Revised 2008 only.

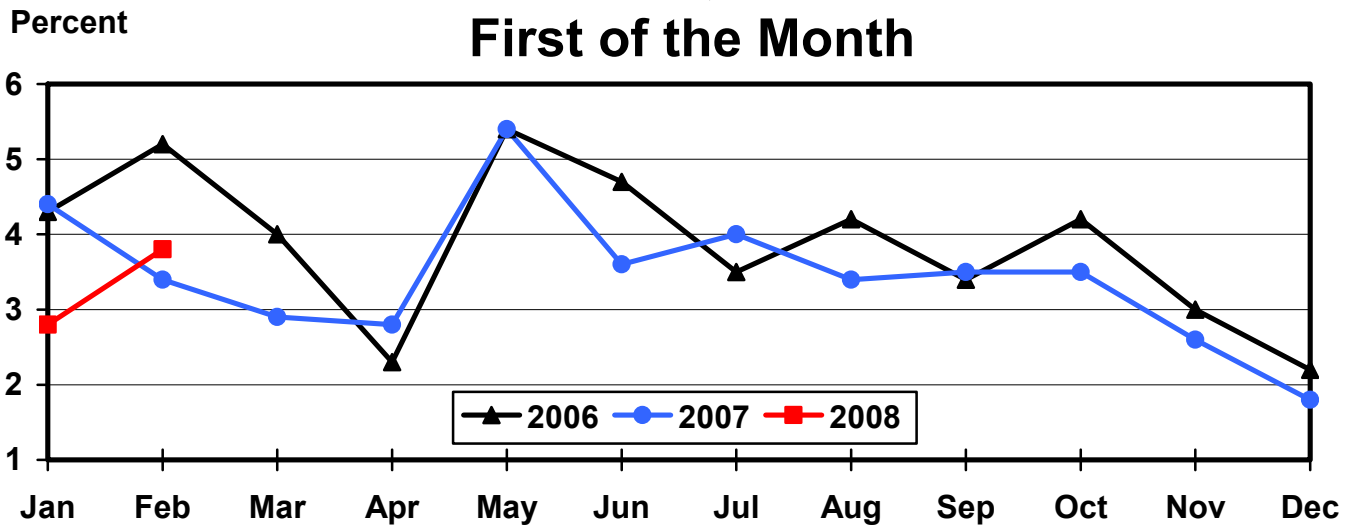
**Forced Molt: Percent of All Layers by State
and United States, February 2007-08¹**

State	Percent Being Molted		Percent with Molt Completed	
	2007	2008	2007	2008
	<i>Percent</i>	<i>Percent</i>	<i>Percent</i>	<i>Percent</i>
AL	0.5	1.5	5.0	6.0
AR	2.5	3.0	10.0	11.5
CA	5.5	7.0	32.5	31.5
CO	0.0	4.0	20.0	20.0
CT	4.0	0.0	15.0	14.5
FL	7.0	8.0	34.0	31.5
GA	2.0	1.5	15.5	13.5
HI	9.0	7.0	59.5	59.0
IL	7.0	4.5	35.0	31.5
IN	6.5	4.0	31.5	32.0
IA	3.5	6.0	37.0	33.5
ME	0.0	0.0	0.0	0.0
MD	6.0	6.5	38.0	12.0
MI	1.0	3.5	30.0	17.5
MN	1.0	2.5	29.0	27.5
MS	1.0	3.5	11.5	9.0
MO	1.5	1.5	18.5	13.5
NE	3.5	0.0	20.5	11.5
NY	5.0	2.5	7.5	7.5
NC	0.0	0.5	9.5	7.5
OH	1.0	2.5	27.0	15.0
OR	6.5	2.5	33.0	27.5
PA	3.5	0.5	12.5	12.5
SC	3.5	8.0	30.5	24.0
SD	5.0	5.0	22.0	18.0
TX	4.0	5.0	23.0	24.5
VA	2.5	3.5	10.5	23.5
WA	9.5	7.5	35.0	37.0
WI	2.5	7.5	26.0	32.5
Oth Sts ²	4.0	4.2	24.5	23.7
US	3.4	3.8	24.4	21.9

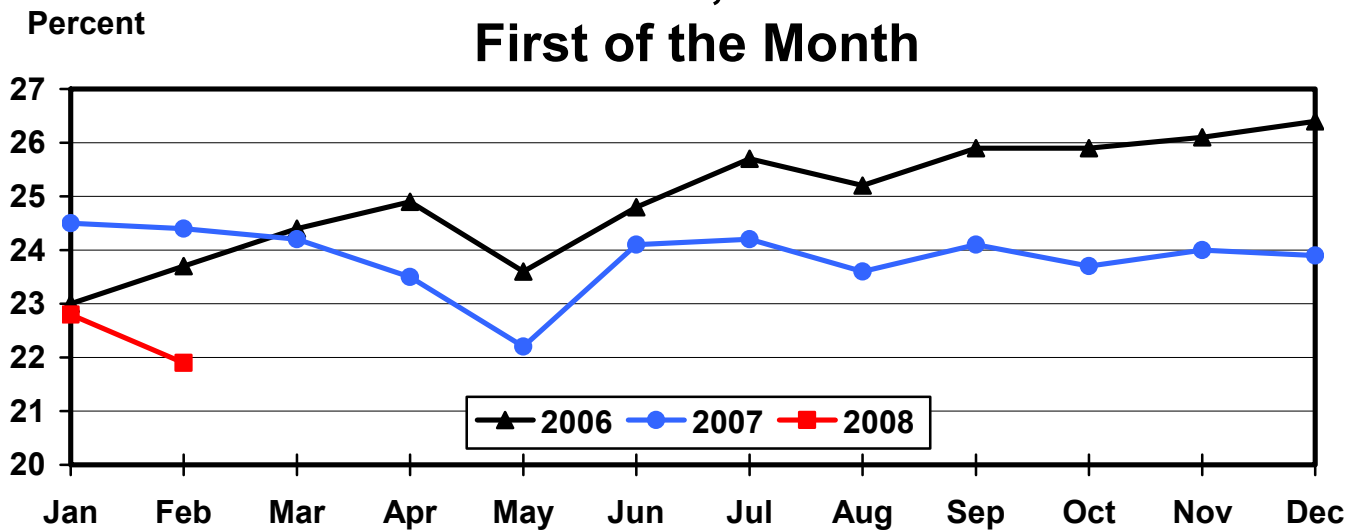
¹ As of first of month.

² Not published separately to avoid disclosing data for individual operations.

All Layers: Percent Being Molted United States, 2006 - 2008



All Layers: Percent Molt Completed United States, 2006 - 2008



**Hatchery Production: Eggs in Incubators, Chicks Hatched,
and Placements by Type, United States, January-February 2007-08**

Item	2007	2008	2008 as % of 2007
	<i>1,000</i>	<i>1,000</i>	<i>Percent</i>
Egg-Type			
Eggs in Incubators on Feb 1	36,993	35,539	96
Chicks Hatched During Jan	36,926	40,167	109
Chicks Hatched Jan thru Jan	36,926	40,167	109
Pullets Hatched During Jan for Intended Placements in Hatchery Supply Flocks	265	210	79
7-18 Months Earlier ¹	2,870	3,008	105
Broiler-Type			
Eggs in Incubators on Feb 1	649,148	674,636	104
Chicks Hatched During Jan	797,066	821,866	103
Chicks Hatched Jan thru Jan	797,066	821,866	103
Pullets Hatched During Jan for Intended Placements in Hatchery Supply Flocks	7,015	7,300	104
7-15 Months Earlier ²	64,544	65,333	101

¹ 2008 includes pullet chicks hatched Jul 2006 through Jun 2007.

² 2008 includes pullet chicks hatched Oct 2006 through Jun 2007.

**Egg-Type Eggs in Incubators: By Region and United States,
February 1, 2007-08**

Region	2007	2008	2008 as % of 2007
	<i>1,000</i>	<i>1,000</i>	<i>Percent</i>
North Atlantic	6,259	5,000	80
E North Central	7,441	7,087	95
W North Central	9,046	8,638	95
South Atlantic	4,012	4,251	106
South Central	5,324	5,616	105
West	4,911	4,947	101
US	36,993	35,539	96

Regions:

North Atlantic = CT, ME, MA, NH, NJ, NY, PA, RI, VT.

E North Central = IL, IN, MI, OH, WI.

W North Central = IA, KS, MN, MO, NE, ND, SD.

South Atlantic = DE, FL, GA, MD, NC, SC, VA, WV.

South Central = AL, AR, KY, LA, MS, OK, TN, TX.

West = AK, AZ, CA, CO, HI, ID, MT, NM, NV, OR, UT, WA, WY.

**Egg-Type Chicks Hatched: By State and United States,
January 2007-08**

State	During January			Jan-Jan		
	2007	2008	2008 as % of 2007	2007	2008	2008 as % of 2007
	<i>1,000</i>	<i>1,000</i>	<i>Percent</i>	<i>1,000</i>	<i>1,000</i>	<i>Percent</i>
GA	2,291	2,357	103	2,291	2,357	103
IN	5,799	5,964	103	5,799	5,964	103
IA	6,790	7,375	109	6,790	7,375	109
MN	1,035	849	82	1,035	849	82
PA	4,470	4,725	106	4,470	4,725	106
Oth Sts ¹	16,541	18,897	114	16,541	18,897	114
US	36,926	40,167	109	36,926	40,167	109

¹ Not published separately to avoid disclosing data for individual operations.

Egg-Type Chicks Hatched: By Month, United States, 2007-08

Month	By Months			Cumulative		
	2007	2008	2008 as % of 2007	2007	2008	2008 as % of 2007
	<i>1,000</i>	<i>1,000</i>	<i>Percent</i>	<i>1,000</i>	<i>1,000</i>	<i>Percent</i>
Jan	36,926	40,167	109	36,926	40,167	109
Feb	36,766			73,692		
Mar	40,537			114,229		
Apr	39,704			153,933		
May	38,498			192,431		
Jun	40,005			232,436		
Jul	35,560			267,996		
Aug	36,838			304,834		
Sep	35,270			340,104		
Oct	35,767			375,871		
Nov	33,986			409,857		
Dec	35,543			445,400		

**Intended Placements: Egg-Type Pullet Chicks for Hatchery Supply
Flocks by Month and Total, United States, 2007-08¹**

Month	Pullet Chicks Hatched		2008 as % of 2007	Cumulative Potential Plcmts Relative to Current Supply Flocks 7-18 Months Earlier ²	
	2007	2008		2007	2008
	<i>1,000</i>	<i>1,000</i>	<i>Percent</i>	<i>1,000</i>	<i>1,000</i>
Jan	265	210	79	2,870	3,008
Feb	166			2,947	2,872
Mar	316			2,970	2,866
Apr	274			2,855	2,906
May	191			2,889	2,868
Jun	300			2,915	2,943
Jul	183			2,873	2,983
Aug	278			2,915	2,928
Sep	300			2,881	
Oct	184			2,936	
Nov	281			2,956	
Dec	245			2,906	
Total	2,983				

¹ Reported by leading breeders. Coverage may not be 100 percent. Includes expected pullet chicks from eggs sold during the preceding month at the rate of 125 pullet chicks per 30 dozen case of eggs.

² For January 2008, includes breeder pullet chicks hatched Jul 2006 through Jun 2007. The 7-18 months represent the first laying cycle. Molting and additional laying cycles will increase the cumulative potential placements.

**Broiler-Type Eggs in Incubators: By Region
and United States, February 1, 2007-08**

Region	2007	2008	2008 as % of 2007
	<i>1,000</i>	<i>1,000</i>	<i>Percent</i>
North Atlantic	11,645	12,958	111
E North Central	9,665	12,141	126
W North Central	28,476	29,629	104
South Atlantic	241,874	249,975	103
South Central	332,946	345,795	104
West	24,542	24,138	98
US	649,148	674,636	104

**Broiler-Type Chicks Hatched: By State
and United States, January 2007-08**

State	During January			Jan-Jan		
	2007	2008	2008 as % of 2007	2007	2008	2008 as % of 2007
	<i>1,000</i>	<i>1,000</i>	<i>Percent</i>	<i>1,000</i>	<i>1,000</i>	<i>Percent</i>
AL	112,842	118,123	105	112,842	118,123	105
AR	101,961	104,378	102	101,961	104,378	102
DE	14,425	14,870	103	14,425	14,870	103
FL	4,982	5,013	101	4,982	5,013	101
GA	127,943	127,761	100	127,943	127,761	100
KY	27,606	27,966	101	27,606	27,966	101
LA	13,602	13,896	102	13,602	13,896	102
MD	31,121	32,983	106	31,121	32,983	106
MS	67,149	69,781	104	67,149	69,781	104
NC	69,015	72,808	105	69,015	72,808	105
OK	23,554	23,889	101	23,554	23,889	101
PA	14,335	15,217	106	14,335	15,217	106
SC	19,829	20,191	102	19,829	20,191	102
TX	52,917	56,404	107	52,917	56,404	107
VA	23,122	22,550	98	23,122	22,550	98
CA, MO, TN, & WV	71,915	72,283	101	71,915	72,283	101
19 Sts ¹	776,318	798,113	103	776,318	798,113	103
Oth Sts ²	20,748	23,753	114	20,748	23,753	114
US	797,066	821,866	103	797,066	821,866	103

¹ States in the weekly hatchery production estimating program.

² Not published separately to avoid disclosing data for individual operations.

Broiler-Type Chicks Hatched: By Month, United States, 2007-08

Month	By Months			Cumulative		
	2007	2008	2008 as % of 2007	2007	2008	2008 as % of 2007
	<i>1,000</i>	<i>1,000</i>	<i>Percent</i>	<i>1,000</i>	<i>1,000</i>	<i>Percent</i>
Jan	797,066	821,866	103	797,066	821,866	103
Feb	723,753			1,520,819		
Mar	810,732			2,331,551		
Apr	800,524			3,132,075		
May	837,386			3,969,461		
Jun	810,419			4,779,880		
Jul	820,865			5,600,745		
Aug	828,788			6,429,533		
Sep	784,155			7,213,688		
Oct	795,371			8,009,059		
Nov	761,402			8,770,461		
Dec	823,327			9,593,788		

**Intended Placements: Broiler-Type Pullet Chicks for Hatchery
Supply Flocks by Month and Total, 2007-08 ¹**

Month	Pullet Chicks Hatched		2008 as % of 2007	Cumulative Potential Plcmts Relative to Current Supply Flocks 7-15 Months Earlier ²	
	2007	2008		2007	2008
	<i>1,000</i>	<i>1,000</i>	<i>Percent</i>	<i>1,000</i>	<i>1,000</i>
US Place- ments					
Jan	7,015	7,300	104	64,544	65,333
Feb	7,071			64,056	65,407
Mar	7,135			64,389	65,581
Apr	6,692			64,340	65,732
May	8,083			64,259	65,687
Jun	7,799			64,284	66,054
Jul	6,818			64,448	66,167
Aug	7,792			64,870	66,775
Sep	7,327			64,410	
Oct	6,970			63,909	
Nov	7,438			64,145	
Dec ³	7,248			64,597	
Annual Total ⁴	87,388				
Total Place- ments ⁵					
Jan	8,772	9,011	103		
Feb	8,811				
Mar	9,025				
Apr	8,358				
May	9,780				
Jun	9,435				
Jul	8,370				
Aug	9,466				
Sep	9,070				
Oct	9,076				
Nov	9,614				
Dec ⁴	9,043				
Annual Total ⁴	108,820				

¹ Reported by leading breeders. Coverage may not be 100 percent. Includes expected pullet chicks from eggs sold during the preceding month at the rate of 125 pullet chicks per 30 dozen case of eggs.

² For Jan 2008, includes breeder pullet chicks hatched Oct 2006 through Jun 2007.

³ Revised 2007 pullet chicks hatched and cumulative placements for July 2008.

⁴ Revised.

⁵ U.S. production of intended placements worldwide.

Reliability of Chicken and Eggs Estimates

Survey Procedures: Primary data for the "**Chickens and Eggs**" report are from weekly and/or monthly questionnaires sent to producers. An attempt is made to collect information for layer and egg estimates from each known contractor and independent producer who has at least 30,000 table egg layers, flocks of hatchery supply layers, or pullet only operations with at least 500 pullets. Coverage for operations with less than 30,000 table egg layers are estimated each month based on data reported in December. Approximately 650 contractors, independent egg producers, and pullet only operations are contacted each month. All known hatcheries, approximately 300, are contacted for information on a weekly and/or monthly basis.

Estimating Procedures: Sound statistical methodology is employed to derive estimates from the reported data. All data are checked for unusual values. Data from each operation are compared to their own past operating profile and to trends from similar operations. Data for missing operations are estimated based on similar operations or historical data. NASS field offices prepare these estimates by using a combination of survey indications and historic trends. Individual State estimates are reviewed by the Agricultural Statistics Board for reasonableness. Individual hatchery data are summed to State, regional, and U.S. totals.

For chicken hatcheries, chicks hatched consist of all chicks of domesticated breeds including males and chicks destined for hatchery supply flocks and research purposes. Eggs set are eggs in incubators for the purpose of hatching. The relationship of egg-type chicks hatched to chicken inventory and poultry marketings are carefully monitored. The disposition of egg-type chicks hatched prior to placement into the laying flock can vary significantly, which can make comparisons to changes in layer inventory inconsistent over time. Broiler chicks placed are specifically placed on feed for meat production. Intended placement data reported by leading breeders include pullet chicks expected from eggs sold the preceding month. The breeders in this report account for a large percentage of replacement pullets for hatchery supply flocks. Production of replacement pullets by these breeders indicates the number of pullets available to hatchery supply flocks several months before the pullets will actually move into the flocks. "Hatchery Supply Flocks" include all generations of layers which could lay eggs to supply a hatchery. This includes the generations of parents, grandparents, great-grandparents, pedigree, etc. Also included are research flocks, vaccine flocks, and specific pathogen-free flocks. The broiler cumulative potential placements are a moving total of the intended placements 7-15 months earlier. The egg-type cumulative potential placements of 7-18 months represent the first laying cycle. Molting and additional laying cycles will increase the cumulative potential placements of egg-type hatching flocks.

Revision Policy: The previous month's estimates are subject to revision if late reports or corrected data indicates a different level. Additionally, revisions after the monthly report will be made at the end of the marketing year and published in the annual reports of "**Chickens and Eggs Summary**" and "**Hatchery Production**".

Reliability: Estimates are based on a census of all known contractors and independent producers who have at least 30,000 table egg layers, flocks of hatchery supply layers, pullet only operations with at least 500 pullets, or operating hatcheries and therefore, have no sampling error. However, estimates are subject to errors such as omission, duplication, and mistakes in reporting, recording, and processing the data. While these errors cannot be measured directly, they are minimized through strict quality controls in the data collection process and a careful review of all reported data for consistency and reasonableness.

Information Contacts

Listed below are the commodity specialists in the Livestock Branch of the National Agricultural Statistics Service to contact for additional information.

Dan Kerestes, Chief, Livestock Branch	(202) 720-3570
Darin Jantzi, Head, Poultry and Specialty Commodities Section	(202) 720-3570
David Colwell - Cold Storage	(202) 720-8784
Fleming Gibson - Egg Products, Poultry Slaughter, Catfish Processing, Mink	(202) 690-3237
Sharyn Lavender - Broiler Hatchery, Chicken Hatchery, Honey	(202) 720-3244
Kim Linonis - Layers, Eggs	(202) 690-8632
Toby Paterson - Catfish Production, Trout Production, Census of Aquaculture, Turkey Hatchery, Turkeys Raised	(202) 720-0585

ACCESS TO REPORTS!!

For your convenience, there are several ways to obtain NASS reports, data products, and services:

INTERNET ACCESS

All NASS reports are available free of charge on the worldwide Internet. For access, connect to the Internet and go to the NASS Home Page at: **www.nass.usda.gov**.

E-MAIL SUBSCRIPTION

All NASS reports are available by subscription free of charge direct to your e-mail address. Starting with the NASS Home Page at **www.nass.usda.gov**, under the right navigation, *Receive reports by Email*, click on **National** or **State**. Follow the instructions on the screen.

PRINTED REPORTS OR DATA PRODUCTS

CALL OUR TOLL-FREE ORDER DESK: 800-999-6779 (U.S. and Canada)
Other areas, please call 703-605-6220 FAX: 703-605-6900
(Visa, MasterCard, check, or money order acceptable for payment.)

ASSISTANCE

For **assistance** with general agricultural statistics or further information about NASS or its products or services, contact the **Agricultural Statistics Hotline** at **800-727-9540**, 7:30 a.m. to 4:00 p.m. ET, or e-mail: **nass@nass.usda.gov**.

The U.S. Department of Agriculture (USDA) prohibits discrimination in all its programs and activities on the basis of race, color, national origin, age, disability, and where applicable, sex, marital status, familial status, parental status, religion, sexual orientation, genetic information, political beliefs, reprisal, or because all or a part of an individual's income is derived from any public assistance program. (Not all prohibited bases apply to all programs.) Persons with disabilities who require alternative means for communication of program information (Braille, large print, audiotape, etc.) should contact USDA's TARGET Center at (202) 720-2600 (voice and TDD).

To file a complaint of discrimination, write to USDA, Director, Office of Civil Rights, 1400 Independence Avenue, S.W., Washington, D.C. 20250-9410, or call (800) 795-3272 (voice) or (202) 720-6382 (TDD). USDA is an equal opportunity provider and employer.