

Chickens And Eggs

Released March 24, 2008, by the National Agricultural Statistics Service (NASS), Agricultural Statistics Board, U.S. Department of Agriculture. For information on "Layers and Eggs" call Kim Linonis at (202) 690-8632, for "Chicks Hatched" call Sharyn Lavender at (202) 720-3244, office hours 7:30 a.m. to 4:00 p.m. ET.

February Egg Production Up 3 Percent

U.S. egg production totaled 7.13 billion during February 2008, up 3 percent from last year. Production included 6.05 billion table eggs, and 1.07 billion hatching eggs, of which 1.01 billion were broiler-type and 64 million were egg-type. The total number of layers during February 2008 averaged 343 million, down 2 percent from last year. February egg production per 100 layers was 2,075 eggs, up 4 percent from February 2007.

All layers in the U.S. on March 1, 2008 totaled 343 million, down 2 percent from last year. The 343 million layers consisted of 282 million layers producing table or market type eggs, 57.6 million layers producing broiler-type hatching eggs, and 2.84 million layers producing egg-type hatching eggs. Rate of lay per day on March 1, 2008, averaged 72.3 eggs per 100 layers, up 1 percent from March 1, 2007.

Egg-Type Chicks Hatched Up 2 Percent

Egg-type chicks hatched during February 2008 totaled 37.5 million, up 2 percent from February 2007. Eggs in incubators totaled 36.5 million on March 1, 2008, down 5 percent from a year ago.

Domestic placements of egg-type pullet chicks for future hatchery supply flocks by leading breeders totaled 280 thousand during February 2008, up 69 percent from February 2007.

Broiler-Type Chicks Hatched Up 7 Percent

Broiler-type chicks hatched during February 2008 totaled 777 million, up 7 percent from February 2007. Eggs in incubators totaled 679 million on March 1, 2008, up 2 percent from a year earlier.

Leading breeders placed 7.43 million broiler-type pullet chicks for future domestic hatchery supply flocks during February 2008, up 5 percent from February 2007.

Contents

	Page
U.S. Average Number of Layers on Hand and Egg Production.....	1
U.S. Layers on Hand and Eggs Produced by Type, Forced Molt, and Pullets	3
Layers on Hand and Eggs Produced by State.....	5
Egg Production by Type and State	7
Forced Molt	9
U.S. Hatchery Production Summary	10
Egg-Type Hatchery	11
Egg-Type Intended Placements	12
Broiler-Type Hatchery	12
Broiler-Type Intended Placements	14
Regional Listing	15
Information Contacts.....	15
Reliability of Chickens and Eggs Estimates.....	16

**All Layers: Average Number on Hand During the Month,
United States, 2006-08**

Month	2006	2007	2008
	<i>1,000 Layers</i>	<i>1,000 Layers</i>	<i>1,000 Layers</i>
Dec ¹	349,699	349,862	344,965
Jan ²	351,313	348,897	344,791
Feb	351,754	348,843	343,366
Mar	352,116	348,201	
Apr	350,398	345,578	
May	347,069	342,469	
Jun	344,631	340,237	
Jul	343,285	340,035	
Aug	343,611	340,651	
Sep	345,217	340,984	
Oct	346,608	342,637	
Nov	348,853	344,229	

¹ December preceding year.

² Revised 2008 only.

**Eggs: Production During the Month by Type,
United States, 2007-08 ¹**

Month	Total Eggs		Table Eggs		Hatching Eggs	
	2007	2008	2007	2008	2007	2008
	<i>Million Eggs</i>	<i>Million Eggs</i>	<i>Million Eggs</i>	<i>Million Eggs</i>	<i>Million Eggs</i>	<i>Million Eggs</i>
Dec ²	7,815	7,784	6,709	6,654	1,106	1,129
Jan ³	7,675	7,647	6,561	6,508	1,114	1,139
Feb	6,951	7,125	5,943	6,053	1,008	1,072
Mar	7,806		6,672		1,134	
Apr	7,472		6,367		1,105	
May	7,622		6,475		1,148	
Jun	7,380		6,268		1,113	
Jul	7,599		6,461		1,138	
Aug	7,594		6,463		1,131	
Sep	7,393		6,296		1,097	
Oct	7,726		6,594		1,132	
Nov	7,542		6,451		1,090	
During Year	90,581		77,266		13,317	

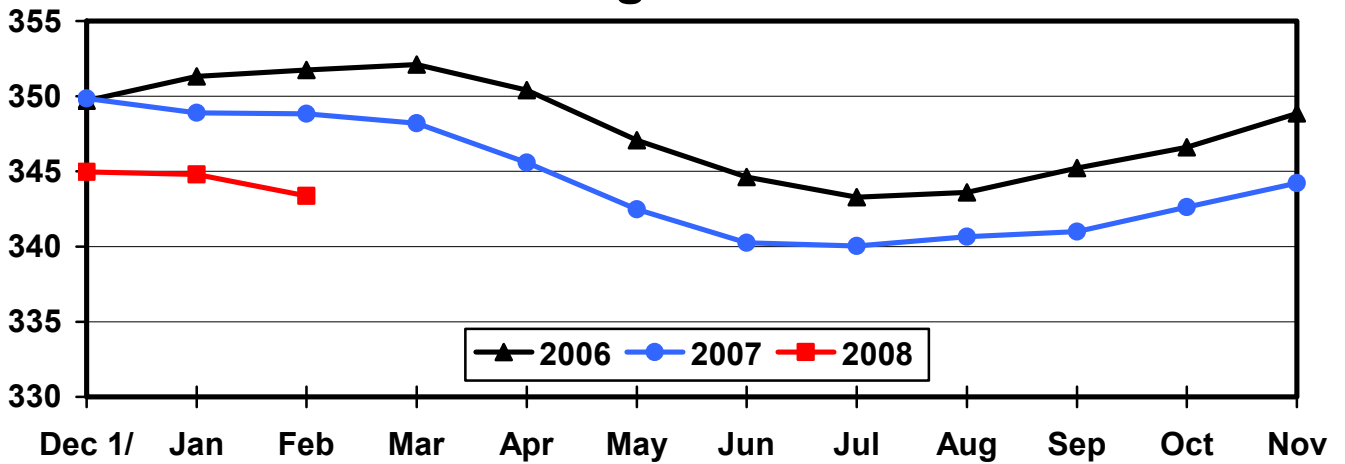
¹ Totals may not add due to rounding.

² December preceding year.

³ Revised 2008 only.

Average Number of Layers United States, 2006 - 2008 During the Month

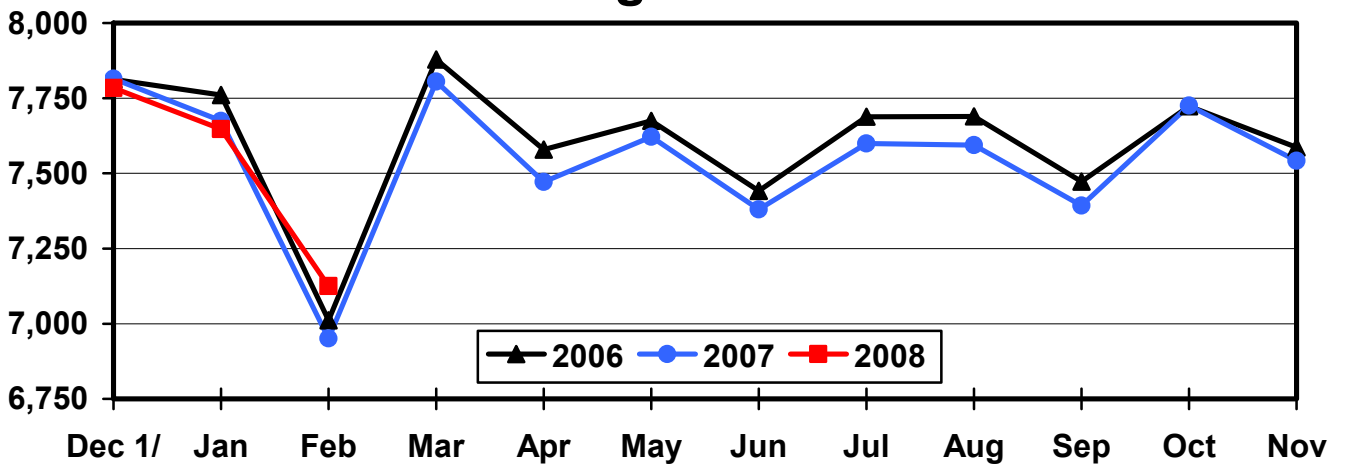
Million Layers



1/ Previous Year

All Egg Production United States, 2006 - 2008 During the Month

Million Eggs



1/ Previous Year

**Layers and Eggs: Layers on Hand and Eggs Produced by Type,
and Forced Molt, United States, January-February 2007-08¹**

Item	Unit	2007	2008 ²	2008 as % of 2007
Layers During Jan	1,000			
All Layers		348,897	344,791	99
Table Egg Type		290,038	284,506	98
Hatching Egg Type		58,859	60,285	102
Broiler-Type Hatching		56,011	57,488	103
Egg-Type Hatching		2,848	2,797	98
Eggs per 100 Layers During Jan	Number			
All Layers		2,200	2,218	101
Table Egg Type		2,262	2,287	101
Hatching Egg Type		1,893	1,889	100
Broiler-Type Hatching		1,869	1,865	100
Egg-Type Hatching		2,353	2,395	102
Eggs Produced During Jan	Million			
All Layers		7,675	7,647	100
Table Egg Type		6,561	6,508	99
Hatching Egg Type		1,114	1,139	102
Broiler-Type Hatching		1,047	1,072	102
Egg-Type Hatching		67	67	100
Layers on Feb 1	1,000			
All Layers		348,563	344,136	99
Table Egg Type		289,447	283,553	98
Hatching Egg Type		59,116	60,583	102
Broiler-Type Hatching		56,289	57,747	103
Egg-Type Hatching		2,827	2,836	100
Eggs per 100 Layers on Feb 1	Number			
All Layers		70.6	70.6	100
Table Egg Type		72.7	72.8	100
Hatching Egg Type		60.4	60.4	100
Broiler-Type Hatching		59.5	59.6	100
Egg-Type Hatching		78.2	77.1	99
Forced Molt Layers on Feb 1	Percent			
Percent Being Molted		3.4	3.9	115
Percent with Molt Completed		24.4	21.7	89
Layers Sold for Slaughter During Jan	1,000	12,736	14,681	115
Layers Rendered, Died, Destroyed, Composted or Disappeared For Any Reason During Jan	1,000	7,485	6,798	91
Pullets on Feb 1	1,000	96,395	103,947	108
Pullets Added During Jan ³	1,000	22,662	21,568	95

¹ Totals may not add due to rounding.

² Revised.

³ Pullet chicks less than 3 days old added to pullet flocks.

**Layers and Eggs: Layers on Hand and Eggs Produced by Type,
and Forced Molt, United States, February-March 2007-08¹**

Item	Unit	2007	2008	2008 as % of 2007
Layers During Feb	1,000			
All Layers		348,843	343,366	98
Table Egg Type		289,285	282,831	98
Hatching Egg Type		59,558	60,535	102
Broiler-Type Hatching		56,730	57,693	102
Egg-Type Hatching		2,828	2,842	100
Eggs per 100 Layers During Feb	Number			
All Layers		1,993	2,075	104
Table Egg Type		2,054	2,140	104
Hatching Egg Type		1,692	1,771	105
Broiler-Type Hatching		1,669	1,747	105
Egg-Type Hatching		2,157	2,252	104
Eggs Produced During Feb	Million			
All Layers		6,951	7,125	103
Table Egg Type		5,943	6,053	102
Hatching Egg Type		1,008	1,072	106
Broiler-Type Hatching		947	1,008	106
Egg-Type Hatching		61	64	105
Layers on Mar 1	1,000			
All Layers		349,081	342,554	98
Table Egg Type		289,104	282,087	98
Hatching Egg Type		59,977	60,467	101
Broiler-Type Hatching		57,157	57,626	101
Egg-Type Hatching		2,820	2,841	101
Eggs per 100 Layers on Mar 1	Number			
All Layers		71.6	72.3	101
Table Egg Type		73.9	74.7	101
Hatching Egg Type		60.7	61.4	101
Broiler-Type Hatching		59.9	60.7	101
Egg-Type Hatching		76.5	76.9	101
Forced Molt Layers on Mar 1	Percent			
Percent Being Molted		2.9	2.0	69
Percent with Molt Completed		24.2	22.3	92
Layers Sold for Slaughter During Feb	1,000	13,203	13,590	103
Layers Rendered, Died, Destroyed, Composted or Disappeared For Any Reason During Feb	1,000	7,998	7,577	95
Pullets on Mar 1	1,000	97,210	102,563	106
Pullets Added During Feb ²	1,000	23,118	19,311	84

¹ Totals may not add due to rounding.

² Pullet chicks less than 3 days old added to pullet flocks.

**Layers and Eggs: Layers on Hand and Eggs Produced by State
and United States, During January 2007-08**

State	Table Egg Layers in Flocks 30,000 and Above		All Layers ¹		Eggs per 100 for All Layers ¹	
	2007	2008 ²	2007	2008 ²	2007	2008 ²
	<i>1,000</i>	<i>1,000</i>	<i>1,000</i>	<i>1,000</i>	<i>Number</i>	<i>Number</i>
AL	1,228	1,380	8,957	9,581	1,954	1,931
AR	4,430	4,022	14,253	14,313	1,894	1,893
CA	19,134	18,728	19,610	18,938	2,132	2,165
CO	3,244	3,385	3,776	3,927	2,331	2,368
CT	2,929	2,875	2,982	2,927	2,381	2,289
FL	10,809	10,405	11,315	10,907	2,227	2,283
GA	10,089	9,606	19,881	19,433	2,062	2,094
HI	391	338	403	361	1,811	1,801
IL	4,831	5,090	5,062	5,317	2,292	2,257
IN	24,380	23,663	25,093	24,401	2,232	2,238
IA	50,889	53,096	51,784	54,032	2,169	2,234
ME	3,931	3,994	3,997	4,066	2,077	2,115
MD	2,530	2,606	2,676	2,748	2,242	2,220
MI	8,644	8,868	8,901	9,082	2,337	2,400
MN	10,597	9,769	11,064	10,243	2,296	2,343
MS	1,600	1,614	6,579	6,435	2,006	1,974
MO	6,154	5,524	7,306	6,730	2,231	2,348
NE	11,380	10,182	11,455	10,257	2,313	2,369
NY	3,789	3,672	4,008	3,890	2,420	2,468
NC	4,025	5,059	11,688	12,842	2,053	2,064
OH	26,668	25,950	27,194	26,552	2,306	2,294
OR	2,340	2,498	2,498	2,679	2,442	2,538
PA	21,887	20,415	23,585	21,817	2,396	2,429
SC	3,633	3,307	4,762	4,543	2,163	2,113
SD	3,091	2,896	3,191	2,921	2,194	2,191
TX	14,679	14,005	19,089	18,947	2,216	2,222
VA	1,312	1,345	3,176	3,167	2,078	1,958
WA	5,692	5,450	5,758	5,516	2,327	2,212
WI	4,375	4,312	4,933	4,862	2,392	2,283
Oth Sts ³	15,834	15,101	23,921	23,357	2,157	2,175
US	284,515	279,155	348,897	344,791	2,200	2,218

¹ Includes all layers and eggs produced in both table egg and hatching egg flocks regardless of size.

² Revised.

³ Not published separately to avoid disclosing data for individual operations.

**Layers and Eggs: Layers on Hand and Eggs Produced by State
and United States, During February 2007-08**

State	Table Egg Layers in Flocks 30,000 and Above		All Layers ¹		Eggs per 100 for All Layers ¹	
	2007	2008	2007	2008	2007	2008
	<i>1,000</i>	<i>1,000</i>	<i>1,000</i>	<i>1,000</i>	<i>Number</i>	<i>Number</i>
AL	1,247	1,332	9,225	9,535	1,724	1,804
AR	4,582	4,042	14,561	14,536	1,738	1,775
CA	19,021	18,312	19,512	18,523	1,958	2,003
CO	3,326	3,362	3,825	3,905	2,196	2,254
CT	2,807	2,756	2,867	2,813	2,197	2,133
FL	10,718	10,402	11,216	10,876	2,068	2,161
GA	10,019	9,513	19,755	19,442	1,883	1,944
HI	384	330	395	353	1,620	1,728
IL	4,732	5,193	4,965	5,420	2,075	2,122
IN	24,419	23,751	25,114	24,474	2,015	2,112
IA	50,764	52,598	51,672	53,570	1,959	2,081
ME	3,955	4,147	4,017	4,215	1,917	2,135
MD	2,543	2,511	2,664	2,624	1,952	2,058
MI	8,752	8,970	9,016	9,184	2,163	2,243
MN	10,481	9,726	10,943	10,199	2,047	2,167
MS	1,674	1,634	6,672	6,376	1,784	1,882
MO	6,108	5,592	7,296	6,740	1,960	2,226
NE	11,294	9,904	11,369	9,979	2,102	2,235
NY	3,711	3,808	3,930	4,031	2,188	2,282
NC	4,071	4,830	11,902	12,757	1,815	1,944
OH	26,610	25,587	27,152	26,190	2,059	2,092
OR	2,290	2,431	2,459	2,600	2,237	2,423
PA	21,287	20,461	22,961	21,835	2,186	2,276
SC	3,595	3,330	4,807	4,583	1,914	1,898
SD	3,087	2,898	3,187	2,923	2,071	2,053
TX	14,638	14,092	19,042	19,034	2,027	2,096
VA	1,405	1,342	3,257	3,160	1,873	1,804
WA	5,731	5,355	5,798	5,424	2,121	2,212
WI	4,418	4,308	4,978	4,871	2,149	2,073
Oth Sts ²	16,094	14,963	24,286	23,194	1,964	2,044
US	283,763	277,480	348,843	343,366	1,993	2,075

¹ Includes all layers and eggs produced in both table egg and hatching egg flocks regardless of size.

² Not published separately to avoid disclosing data for individual operations.

**Egg Production: By Type, State, and United States,
January 2007-08 ¹**

State	Total Production		Table Eggs ²		Hatching Eggs ²	
	2007	2008 ³	2007	2008 ³	2007	2008
	<i>Million Eggs</i>	<i>Million Eggs</i>	<i>Million Eggs</i>	<i>Million Eggs</i>	<i>Million Eggs</i>	<i>Million Eggs</i>
AL	175	185	29	32	146	153
AR	270	271	96	87	174	184
CA	418	410				
CO	88	93				
CT	71	67				
FL	252	249	243	239	9	10
GA	410	407	223	218	187	189
HI	7.3	6.5	7.3	6.5	0	0
IL	116	120	112	116	4	4
IN	560	546	547	533	13	13
IA	1,123	1,207	1,109	1,192	14	15
ME	83	86				
MD	60	61	58	59	2	2
MI	208	218				
MN	254	240	246	232	8	8
MS	132	127	38	37	94	90
MO	163	158				
NE	265	243	265	243	0	0
NY	97	96				
NC	240	265	99	124	141	141
OH	627	609				
OR	61	68	59	66	2	2
PA	565	530	545	510	20	20
SC	103	96	82	74	21	22
SD	70	64	70	64	0	0
TX	423	421				
VA	66	62	31	30	35	32
WA	134	122				
WI	118	111				
Oth Sts ⁴	516	508	390	378	126	130
US	7,675	7,647	6,561	6,508	1,114	1,139

¹ Totals may not add due to rounding.

² Data by type of flock not shown for some States to avoid disclosing individual operations, data included in US totals.

³ Revised.

⁴ Not published separately to avoid disclosing data for individual operations.

**Egg Production: By Type, State, and United States,
February 2007-08¹**

State	Total Production		Table Eggs ²		Hatching Eggs ²	
	2007	2008	2007	2008	2007	2008
	<i>Million Eggs</i>	<i>Million Eggs</i>	<i>Million Eggs</i>	<i>Million Eggs</i>	<i>Million Eggs</i>	<i>Million Eggs</i>
AL	159	172	26	29	133	143
AR	253	258	92	81	161	177
CA	382	371				
CO	84	88				
CT	63	60				
FL	232	235	223	226	9	9
GA	372	378	205	200	167	178
HI	6.4	6.1	6.4	6.1	0	0
IL	103	115	100	112	3	3
IN	506	517	494	505	12	12
IA	1,012	1,115	999	1,099	13	16
ME	77	90				
MD	52	54	51	53	1	1
MI	195	206				
MN	224	221	217	213	7	8
MS	119	120	36	36	83	84
MO	143	150				
NE	239	223	239	223	0	0
NY	86	92				
NC	216	248	88	114	128	134
OH	559	548				
OR	55	63	53	61	2	2
PA	502	497	484	479	18	18
SC	92	87	73	67	19	20
SD	66	60	66	60	0	0
TX	386	399				
VA	61	57	30	27	31	30
WA	123	120				
WI	107	101				
Oth Sts ³	477	474	362	352	115	122
US	6,951	7,125	5,943	6,053	1,008	1,072

¹ Totals may not add due to rounding.

² Data by type of flock not shown for some States to avoid disclosing individual operations, data included in US totals.

³ Not published separately to avoid disclosing data for individual operations.

**Forced Molt: Percent of All Layers by Month,
United States, 2007-08 ¹**

Month	Percent Being Molted		Percent with Molt Completed	
	2007	2008	2007	2008
	<i>Percent</i>	<i>Percent</i>	<i>Percent</i>	<i>Percent</i>
Jan	4.4	2.8	24.5	22.8
Feb ²	3.4	3.9	24.4	21.7
Mar	2.9	2.0	24.2	22.3
Apr	2.8		23.5	
May	5.4		22.2	
Jun	3.6		24.1	
Jul	4.0		24.2	
Aug	3.4		23.6	
Sep	3.5		24.1	
Oct	3.5		23.7	
Nov	2.6		24.0	
Dec	1.8		23.9	

¹ As of first of month.

² Revised 2008 only.

**Forced Molt: Percent of All Layers by State
and United States, March 2007-08 ¹**

State	Percent Being Molted		Percent with Molt Completed	
	2007	2008	2007	2008
	<i>Percent</i>	<i>Percent</i>	<i>Percent</i>	<i>Percent</i>
AL	0.5	0.5	5.0	6.0
AR	1.5	0.0	12.0	12.0
CA	2.5	3.0	34.0	35.0
CO	0.0	0.0	19.5	19.0
CT	0.0	0.0	15.0	14.5
FL	4.5	3.0	35.0	34.5
GA	1.5	1.0	17.0	13.5
HI	3.0	10.0	64.5	60.5
IL	7.5	2.0	29.5	31.0
IN	5.5	2.0	32.0	33.5
IA	4.0	2.5	36.0	34.0
ME	0.0	0.0	0.0	0.0
MD	4.0	8.0	38.5	10.5
MI	1.0	3.5	24.5	16.5
MN	3.5	2.5	26.5	29.0
MS	0.0	0.0	12.0	12.0
MO	4.0	1.5	19.0	18.0
NE	3.5	0.0	19.0	9.0
NY	3.5	0.0	8.0	8.0
NC	1.0	0.0	8.5	7.5
OH	2.0	0.5	25.0	15.0
OR	8.5	2.5	34.0	29.0
PA	2.5	2.0	13.5	11.5
SC	1.0	6.5	30.0	23.5
SD	5.0	5.0	22.0	18.0
TX	4.5	1.0	21.0	26.0
VA	0.0	3.0	12.5	19.0
WA	2.5	6.5	41.0	30.5
WI	2.5	6.5	25.5	35.5
Oth Sts ²	2.4	3.2	25.1	22.8
US	2.9	2.0	24.2	22.3

¹ As of first of month.

² Not published separately to avoid disclosing data for individual operations.

**Hatchery Production: Eggs in Incubators, Chicks Hatched,
and Placements by Type, United States, February-March 2007-08**

Item	2007	2008	2008 as % of 2007
	<i>1,000</i>	<i>1,000</i>	<i>Percent</i>
Egg-Type			
Eggs in Incubators on Mar 1	38,468	36,531	95
Chicks Hatched During Feb	36,766	37,549	102
Chicks Hatched Jan thru Feb	73,692	77,716	105
Pullets Hatched During Feb for Intended Placements in Hatchery Supply Flocks	166	280	169
7-18 Months Earlier ¹	2,947	2,872	97
Broiler-Type			
Eggs in Incubators on Mar 1	663,815	679,081	102
Chicks Hatched During Feb	723,753	777,197	107
Chicks Hatched Jan thru Feb	1,520,819	1,593,063	105
Pullets Hatched During Feb for Intended Placements in Hatchery Supply Flocks	7,071	7,426	105
7-15 Months Earlier ²	64,056	65,407	102

¹ 2008 includes pullet chicks hatched Aug 2006 through Jul 2007.

² 2008 includes pullet chicks hatched Nov 2006 through Jul 2007.

**Egg-Type Eggs in Incubators: By Region and United States,
March 1, 2007-08**

Region	2007	2008	2008 as % of 2007
	<i>1,000</i>	<i>1,000</i>	<i>Percent</i>
North Atlantic	6,847	5,094	74
E North Central	8,078	7,116	88
W North Central	8,939	8,575	96
South Atlantic	3,957	4,624	117
South Central	4,876	5,997	123
West	5,771	5,125	89
US	38,468	36,531	95

**Egg-Type Chicks Hatched: By State and United States,
February 2007-08**

State	During February			Jan-Feb		
	2007	2008	2008 as % of 2007	2007	2008	2008 as % of 2007
	<i>1,000</i>	<i>1,000</i>	<i>Percent</i>	<i>1,000</i>	<i>1,000</i>	<i>Percent</i>
GA	2,139	2,175	102	4,430	4,532	102
IN	5,116	5,051	99	10,915	11,015	101
IA	7,295	7,110	97	14,085	14,485	103
MN	823	620	75	1,858	1,469	79
PA	4,862	5,596	115	9,332	10,321	111
Oth Sts ¹	16,531	16,997	103	33,072	35,894	109
US	36,766	37,549	102	73,692	77,716	105

¹ Not published separately to avoid disclosing data for individual operations.

Egg-Type Chicks Hatched: By Month, United States, 2007-08

Month	By Months			Cumulative		
	2007	2008	2008 as % of 2007	2007	2008	2008 as % of 2007
	<i>1,000</i>	<i>1,000</i>	<i>Percent</i>	<i>1,000</i>	<i>1,000</i>	<i>Percent</i>
Jan	36,926	40,167	109	36,926	40,167	109
Feb	36,766	37,549	102	73,692	77,716	105
Mar	40,537			114,229		
Apr	39,704			153,933		
May	38,498			192,431		
Jun	40,005			232,436		
Jul	35,560			267,996		
Aug	36,838			304,834		
Sep	35,270			340,104		
Oct	35,767			375,871		
Nov	33,986			409,857		
Dec	35,543			445,400		

**Intended Placements: Egg-Type Pullet Chicks for Hatchery Supply
Flocks by Month and Total, United States, 2007-08¹**

Month	Pullet Chicks Hatched		2008 as % of 2007	Cumulative Potential Plcmts Relative to Current Supply Flocks 7-18 Months Earlier ²	
	2007	2008		2007	2008
	<i>1,000</i>	<i>1,000</i>	<i>Percent</i>	<i>1,000</i>	<i>1,000</i>
Jan	265	210	79	2,870	3,008
Feb	166	280	169	2,947	2,872
Mar	316			2,970	2,866
Apr	274			2,855	2,906
May	191			2,889	2,868
Jun	300			2,915	2,943
Jul	183			2,873	2,983
Aug	278			2,915	2,928
Sep	300			2,881	3,042
Oct	184			2,936	
Nov	281			2,956	
Dec	245			2,906	
Total	2,983				

¹ Reported by leading breeders. Coverage may not be 100 percent. Includes expected pullet chicks from eggs sold during the preceding month at the rate of 125 pullet chicks per 30 dozen case of eggs.

² For February 2008, includes breeder pullet chicks hatched Aug 2006 through Jul 2007. The 7-18 months represent the first laying cycle. Molting and additional laying cycles will increase the cumulative potential placements.

**Broiler-Type Eggs in Incubators: By Region
and United States, March 1, 2007-08**

Region	2007	2008	2008 as % of 2007
	<i>1,000</i>	<i>1,000</i>	<i>Percent</i>
North Atlantic	11,858	12,614	106
E North Central	9,721	11,448	118
W North Central	28,711	30,429	106
South Atlantic	248,207	251,372	101
South Central	340,157	347,643	102
West	25,161	25,575	102
US	663,815	679,081	102

**Broiler-Type Chicks Hatched: By State
and United States, February 2007-08**

State	During February			Jan-Feb		
	2007	2008	2008 as % of 2007	2007	2008	2008 as % of 2007
	<i>1,000</i>	<i>1,000</i>	<i>Percent</i>	<i>1,000</i>	<i>1,000</i>	<i>Percent</i>
AL	101,237	109,490	108	214,079	227,613	106
AR	92,053	95,937	104	194,014	200,315	103
DE	12,987	13,858	107	27,412	28,728	105
FL	4,587	4,774	104	9,569	9,787	102
GA	114,722	118,523	103	242,665	246,284	101
KY	25,665	26,036	101	53,271	54,002	101
LA	12,419	13,626	110	26,021	27,522	106
MD	27,770	31,254	113	58,891	64,237	109
MS	62,342	65,686	105	129,491	135,467	105
NC	61,954	67,619	109	130,969	140,427	107
OK	21,633	22,057	102	45,187	45,946	102
PA	12,581	14,544	116	26,916	29,761	111
SC	17,680	18,376	104	37,509	38,567	103
TX	47,518	53,939	114	100,435	110,343	110
VA	20,513	21,652	106	43,635	44,202	101
CA, MO, TN, & WV	64,855	67,315	104	136,770	139,598	102
19 Sts ¹	700,516	744,686	106	1,476,834	1,542,799	104
Oth Sts ²	23,237	26,511	114	43,985	50,264	114
US	723,753	771,197	107	1,520,819	1,593,063	105

¹ States in the weekly hatchery production estimating program.

² Not published separately to avoid disclosing data for individual operations.

Broiler-Type Chicks Hatched: By Month, United States, 2007-08

Month	By Months			Cumulative		
	2007	2008	2008 as % of 2007	2007	2008	2008 as % of 2007
	<i>1,000</i>	<i>1,000</i>	<i>Percent</i>	<i>1,000</i>	<i>1,000</i>	<i>Percent</i>
Jan	797,066	821,866	103	797,066	821,866	103
Feb	723,753	771,197	107	1,520,819	1,593,063	105
Mar	810,732			2,331,551		
Apr	800,524			3,132,075		
May	837,386			3,969,461		
Jun	810,419			4,779,880		
Jul	820,865			5,600,745		
Aug	828,788			6,429,533		
Sep	784,155			7,213,688		
Oct	795,371			8,009,059		
Nov	761,402			8,770,461		
Dec	823,327			9,593,788		

**Intended Placements: Broiler-Type Pullet Chicks for Hatchery
Supply Flocks by Month and Total, 2007-08 ¹**

Month	Pullet Chicks Hatched		2008 as % of 2007	Cumulative Potential Plcmts Relative to Current Supply Flocks 7-15 Months Earlier ²	
	2007	2008		2007	2008
	<i>1,000</i>	<i>1,000</i>	<i>Percent</i>	<i>1,000</i>	<i>1,000</i>
US Place- ments					
Jan ³	7,015	7,012	100	64,544	65,333
Feb	7,071	7,426	105	64,056	65,407
Mar	7,135			64,389	65,581
Apr	6,692			64,340	65,732
May	8,083			64,259	65,687
Jun	7,799			64,284	66,054
Jul	6,818			64,448	66,167
Aug	7,792			64,870	66,487
Sep	7,327			64,410	65,830
Oct	6,970			63,909	
Nov	7,438			64,145	
Dec	7,248			64,597	
Annual Total	87,388				
Total Place- ments ⁴					
Jan ⁵	8,772	8,706	99		
Feb	8,811	9,565	109		
Mar	9,025				
Apr	8,358				
May	9,780				
Jun	9,435				
Jul	8,370				
Aug	9,466				
Sep	9,070				
Oct	9,076				
Nov	9,614				
Dec	9,043				
Annual Total	108,820				

¹ Reported by leading breeders. Coverage may not be 100 percent. Includes expected pullet chicks from eggs sold during the preceding month at the rate of 125 pullet chicks per 30 dozen case of eggs.

² For Feb 2008, includes breeder pullet chicks hatched Nov 2006 through Jul 2007.

³ Revised 2008 pullet chicks hatched and cumulative placements for August 2008.

⁴ U.S. production of intended placements worldwide.

⁵ Revised 2008 only.

Regional Listing

North Atlantic: CT, ME, MA, NH, NJ, NY, PA, RI, VT.
East North Central: IL, IN, MI, OH, WI.
West North Central: IA, KS, MN, MO, NE, ND, SD.
South Atlantic: DE, FL, GA, MD, NC, SC, VA, WV.
South Central: AL, AR, KY, LA, MS, OK, TN, TX.
West: AK, AZ, CA, CO, HI, ID, MT, NM, NV, OR, UT, WA, WY.

Information Contacts

Listed below are the commodity specialists in the Livestock Branch of the National Agricultural Statistics Service to contact for additional information.

Dan Kerestes, Chief, Livestock Branch..... (202) 720-3570

Darin Jantzi, Head, Poultry and Specialty Commodities Section..... (202) 720-3570

David Colwell - Cold Storage (202) 720-8784

Fleming Gibson - Egg Products, Poultry Slaughter, Catfish Processing, Mink (202) 690-3237

Sharyn Lavender - Broiler Hatchery, Chicken Hatchery, Honey (202) 720-3244

Kim Linonis - Layers, Eggs..... (202) 690-8632

Toby Paterson - Catfish Production, Trout Production, Census of Aquaculture,
Turkey Hatchery, Turkeys Raised (202) 720-0585

Reliability of Chickens and Eggs Estimates

Survey Procedures: Primary data for the "**Chickens and Eggs**" report are from weekly and/or monthly questionnaires sent to producers. An attempt is made to collect information for layer and egg estimates from each known contractor and independent producer who has at least 30,000 table egg layers, flocks of hatchery supply layers, or pullet only operations with at least 500 pullets. Coverage for operations with less than 30,000 table egg layers are estimated each month based on data reported in December. Approximately 650 contractors, independent egg producers, and pullet only operations are contacted each month. All known hatcheries, approximately 300, are contacted for information on a weekly and/or monthly basis.

Estimating Procedures: Sound statistical methodology is employed to derive estimates from the reported data. All data are checked for unusual values. Data from each operation are compared to their own past operating profile and to trends from similar operations. Data for missing operations are estimated based on similar operations or historical data. NASS field offices prepare these estimates by using a combination of survey indications and historic trends. Individual State estimates are reviewed by the Agricultural Statistics Board for reasonableness. Individual hatchery data are summed to State, regional, and U.S. totals.

For chicken hatcheries, chicks hatched consist of all chicks of domesticated breeds including males and chicks destined for hatchery supply flocks and research purposes. Eggs set are eggs in incubators for the purpose of hatching. The relationship of egg-type chicks hatched to chicken inventory and poultry marketings are carefully monitored. The disposition of egg-type chicks hatched prior to placement into the laying flock can vary significantly, which can make comparisons to changes in layer inventory inconsistent over time. Broiler chicks placed are specifically placed on feed for meat production. Intended placement data reported by leading breeders include pullet chicks expected from eggs sold the preceding month. The breeders in this report account for a large percentage of replacement pullets for hatchery supply flocks. Production of replacement pullets by these breeders indicates the number of pullets available to hatchery supply flocks several months before the pullets will actually move into the flocks. "Hatchery Supply Flocks" include all generations of layers which could lay eggs to supply a hatchery. This includes the generations of parents, grandparents, great-grandparents, pedigree, etc. Also included are research flocks, vaccine flocks, and specific pathogen-free flocks. The broiler cumulative potential placements are a moving total of the intended placements 7-15 months earlier. The egg-type cumulative potential placements of 7-18 months represent the first laying cycle. Molting and additional laying cycles will increase the cumulative potential placements of egg-type hatching flocks.

Revision Policy: The previous month's estimates are subject to revision if late reports or corrected data indicates a different level. Additionally, revisions after the monthly report will be made at the end of the marketing year and published in the annual reports of "**Chickens and Eggs Summary**" and "**Hatchery Production**".

Reliability: Estimates are based on a census of all known contractors and independent producers who have at least 30,000 table egg layers, flocks of hatchery supply layers, pullet only operations with at least 500 pullets, or operating hatcheries and therefore, have no sampling error. However, estimates are subject to errors such as omission, duplication, and mistakes in reporting, recording, and processing the data. While these errors cannot be measured directly, they are minimized through strict quality controls in the data collection process and a careful review of all reported data for consistency and reasonableness.

ACCESS TO REPORTS!!

For your convenience, there are several ways to obtain NASS reports, data products, and services:

INTERNET ACCESS

All NASS reports are available free of charge on the worldwide Internet. For access, connect to the Internet and go to the NASS Home Page at www.nass.usda.gov.

E-MAIL SUBSCRIPTION

All NASS reports are available by subscription free of charge direct to your e-mail address. Starting with the NASS Home Page at www.nass.usda.gov, under the right navigation, *Receive reports by Email*, click on **National** or **State**. Follow the instructions on the screen.

PRINTED REPORTS OR DATA PRODUCTS

CALL OUR TOLL-FREE ORDER DESK: 800-999-6779 (U.S. and Canada)
Other areas, please call 703-605-6220 FAX: 703-605-6900
(Visa, MasterCard, check, or money order acceptable for payment.)

ASSISTANCE

For **assistance** with general agricultural statistics or further information about NASS or its products or services, contact the **Agricultural Statistics Hotline** at **800-727-9540**, 7:30 a.m. to 4:00 p.m. ET, or e-mail: nass@nass.usda.gov.

The U.S. Department of Agriculture (USDA) prohibits discrimination in all its programs and activities on the basis of race, color, national origin, age, disability, and where applicable, sex, marital status, familial status, parental status, religion, sexual orientation, genetic information, political beliefs, reprisal, or because all or a part of an individual's income is derived from any public assistance program. (Not all prohibited bases apply to all programs.) Persons with disabilities who require alternative means for communication of program information (Braille, large print, audiotape, etc.) should contact USDA's TARGET Center at (202) 720-2600 (voice and TDD).

To file a complaint of discrimination, write to USDA, Director, Office of Civil Rights, 1400 Independence Avenue, S.W., Washington, D.C. 20250-9410, or call (800) 795-3272 (voice) or (202) 720-6382 (TDD). USDA is an equal opportunity provider and employer.