

# Chickens And Eggs

---

Released April 22, 2008, by the National Agricultural Statistics Service (NASS), Agricultural Statistics Board, U.S. Department of Agriculture. For information on "Layers and Eggs" call Kim Linonis at (202) 690-8632, for "Chicks Hatched" call Sharyn Lavender at (202) 720-3244, office hours 7:30 a.m. to 4:00 p.m. ET.

## **March Egg Production Down 2 Percent**

U.S. egg production totaled 7.68 billion during March 2008, down 2 percent from last year. Production included 6.53 billion table eggs, and 1.15 billion hatching eggs, of which 1.08 billion were broiler-type and 67 million were egg-type. The total number of layers during March 2008 averaged 342 million, down 2 percent from last year. March egg production per 100 layers was 2,244 eggs, up slightly from March 2007.

All layers in the U.S. on April 1, 2008 totaled 342 million, down 2 percent from last year. The 342 million layers consisted of 282 million layers producing table or market type eggs, 57.4 million layers producing broiler-type hatching eggs, and 2.84 million layers producing egg-type hatching eggs. Rate of lay per day on April 1, 2008, averaged 72.4 eggs per 100 layers, down 1 percent from April 1, 2007.

## **Egg-Type Chicks Hatched Up 3 Percent**

Egg-type chicks hatched during March 2008 totaled 39.5 million, up 3 percent from March 2007. Eggs in incubators totaled 37.6 million on April 1, 2008, down 2 percent from a year ago.

Domestic placements of egg-type pullet chicks for future hatchery supply flocks by leading breeders totaled 245 thousand during March 2008, down 22 percent from March 2007.

## **Broiler-Type Chicks Hatched Up 3 Percent**

Broiler-type chicks hatched during March 2008 totaled 833 million, up 3 percent from March 2007. Eggs in incubators totaled 674 million on April 1, 2008, up 1 percent from a year earlier.

Leading breeders placed 7.09 million broiler-type pullet chicks for future domestic hatchery supply flocks during March 2008, down 1 percent from March 2007.



## Contents

	Page
U.S. Average Number of Layers on Hand and Egg Production.....	1
U.S. Layers on Hand and Eggs Produced by Type, Forced Molt, and Pullets .....	3
Layers on Hand and Eggs Produced by State.....	5
Egg Production by Type and State .....	7
Forced Molt .....	9
U.S. Hatchery Production Summary .....	10
Egg-Type Hatchery .....	11
Egg-Type Intended Placements .....	12
Broiler-Type Hatchery .....	12
Broiler-Type Intended Placements .....	14
Regional Listing .....	15
Information Contacts.....	15
Reliability of Chickens and Eggs Estimates.....	16

**All Layers: Average Number on Hand During the Month,  
United States, 2006-08**

Month	2006	2007	2008
	<i>1,000 Layers</i>	<i>1,000 Layers</i>	<i>1,000 Layers</i>
Dec <sup>1</sup>	349,699	349,862	344,965
Jan	351,313	348,897	344,791
Feb <sup>2</sup>	351,754	348,843	343,129
Mar	352,116	348,201	342,040
Apr	350,398	345,578	
May	347,069	342,469	
Jun	344,631	340,237	
Jul	343,285	340,035	
Aug	343,611	340,651	
Sep	345,217	340,984	
Oct	346,608	342,637	
Nov	348,853	344,229	

<sup>1</sup> December preceding year.

<sup>2</sup> Revised 2008 only.

**Eggs: Production During the Month by Type,  
United States, 2007-08 <sup>1</sup>**

Month	Total Eggs		Table Eggs		Hatching Eggs	
	2007	2008	2007	2008	2007	2008
	<i>Million Eggs</i>	<i>Million Eggs</i>	<i>Million Eggs</i>	<i>Million Eggs</i>	<i>Million Eggs</i>	<i>Million Eggs</i>
Dec <sup>2</sup>	7,815	7,784	6,709	6,654	1,106	1,129
Jan	7,675	7,647	6,561	6,508	1,114	1,139
Feb <sup>3</sup>	6,951	7,113	5,943	6,042	1,008	1,071
Mar	7,806	7,675	6,672	6,526	1,134	1,149
Apr	7,472		6,367		1,105	
May	7,622		6,475		1,148	
Jun	7,380		6,268		1,113	
Jul	7,599		6,461		1,138	
Aug	7,594		6,463		1,131	
Sep	7,393		6,296		1,097	
Oct	7,726		6,594		1,132	
Nov	7,542		6,451		1,090	
During Year	90,581		77,266		13,317	

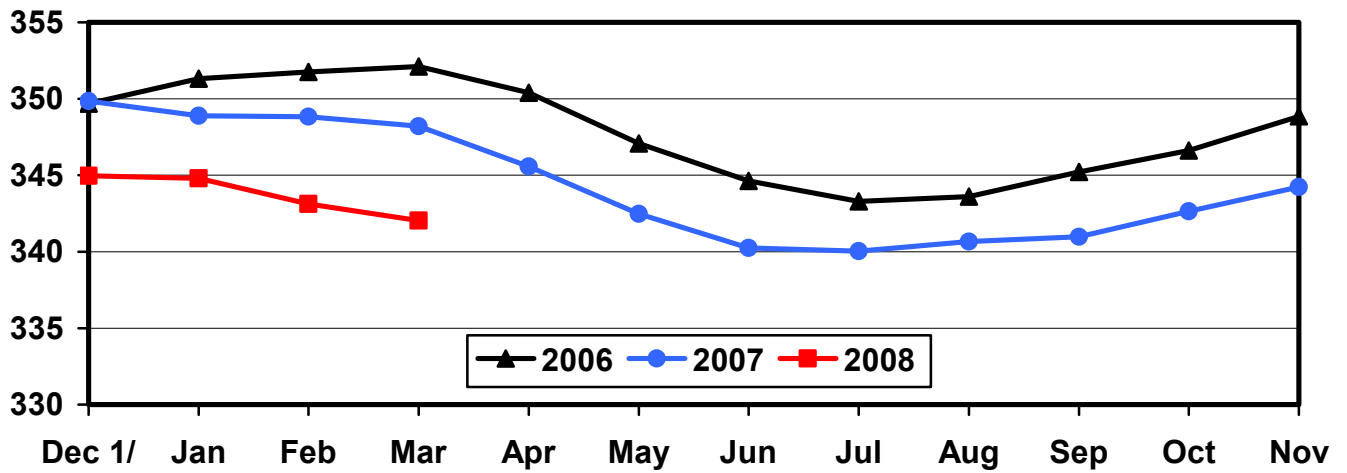
<sup>1</sup> Totals may not add due to rounding.

<sup>2</sup> December preceding year.

<sup>3</sup> Revised 2008 only.

## U.S. Average Number of Layers During the Month

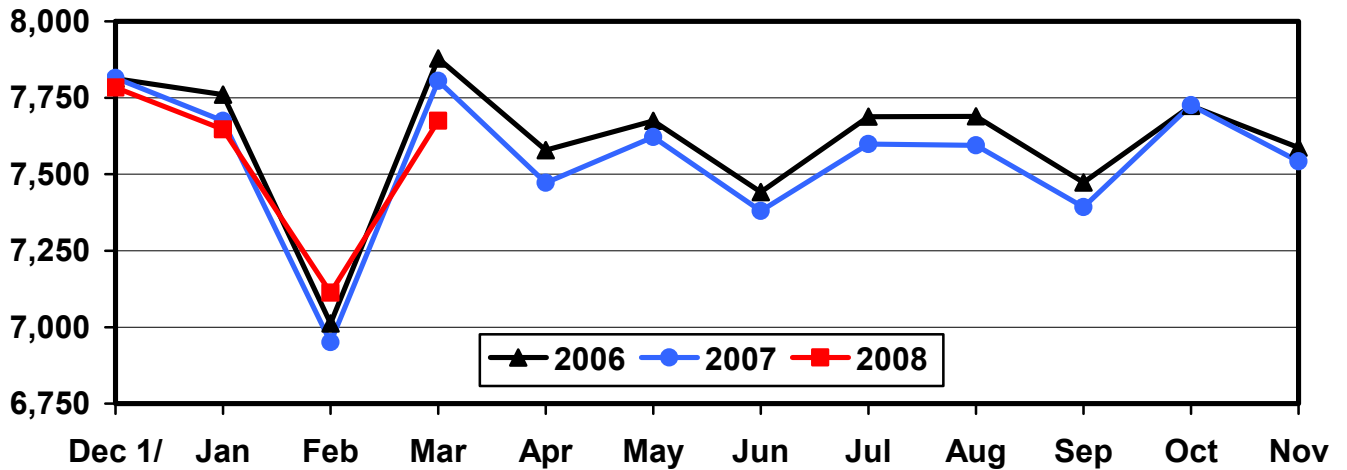
Million Layers



1/ Previous Year

## U.S. All Egg Production During the Month

Million Eggs



1/ Previous Year

**Layers and Eggs: Layers on Hand and Eggs Produced by Type,  
and Forced Molt, United States, February-March 2007-08<sup>1</sup>**

Item	Unit	2007	2008 <sup>2</sup>	2008 as % of 2007
Layers During Feb	1,000			
All Layers		348,843	343,129	98
Table Egg Type		289,285	282,599	98
Hatching Egg Type		59,558	60,530	102
Broiler-Type Hatching		56,730	57,693	102
Egg-Type Hatching		2,828	2,837	100
Eggs per 100 Layers During Feb	Number			
All Layers		1,993	2,073	104
Table Egg Type		2,054	2,138	104
Hatching Egg Type		1,692	1,769	105
Broiler-Type Hatching		1,669	1,745	105
Egg-Type Hatching		2,157	2,256	105
Eggs Produced During Feb	Million			
All Layers		6,951	7,113	102
Table Egg Type		5,943	6,042	102
Hatching Egg Type		1,008	1,071	106
Broiler-Type Hatching		947	1,007	106
Egg-Type Hatching		61	64	105
Layers on Mar 1	1,000			
All Layers		349,081	342,080	98
Table Egg Type		289,104	281,624	97
Hatching Egg Type		59,977	60,456	101
Broiler-Type Hatching		57,157	57,626	101
Egg-Type Hatching		2,820	2,830	100
Eggs per 100 Layers on Mar 1	Number			
All Layers		71.6	72.2	101
Table Egg Type		73.9	74.5	101
Hatching Egg Type		60.7	61.4	101
Broiler-Type Hatching		59.9	60.7	101
Egg-Type Hatching		76.5	76.7	100
Forced Molt Layers on Mar 1	Percent			
Percent Being Molted		2.9	2.0	69
Percent with Molt Completed		24.2	22.2	92
Layers Sold for Slaughter During Feb	1,000	13,203	13,524	102
Layers Rendered, Died, Destroyed, Composted or Disappeared For Any Reason During Feb	1,000	7,998	7,366	92
Pullets on Mar 1	1,000	97,210	101,751	105
Pullets Added During Feb <sup>3</sup>	1,000	23,118	19,501	84

<sup>1</sup> Totals may not add due to rounding.

<sup>2</sup> Revised.

<sup>3</sup> Pullet chicks less than 3 days old added to pullet flocks.

**Layers and Eggs: Layers on Hand and Eggs Produced by Type,  
and Forced Molt, United States, March-April 2007-08 <sup>1</sup>**

Item	Unit	2007	2008	2008 as % of 2007
Layers During Mar	1,000			
All Layers		348,201	342,040	98
Table Egg Type		288,338	281,692	98
Hatching Egg Type		59,863	60,348	101
Broiler-Type Hatching		57,047	57,508	101
Egg-Type Hatching		2,816	2,840	101
Eggs per 100 Layers During Mar	Number			
All Layers		2,242	2,244	100
Table Egg Type		2,314	2,317	100
Hatching Egg Type		1,894	1,904	101
Broiler-Type Hatching		1,869	1,881	101
Egg-Type Hatching		2,415	2,359	98
Eggs Produced During Mar	Million			
All Layers		7,806	7,675	98
Table Egg Type		6,672	6,526	98
Hatching Egg Type		1,134	1,149	101
Broiler-Type Hatching		1,066	1,082	102
Egg-Type Hatching		68	67	99
Layers on Apr 1	1,000			
All Layers		347,280	341,955	98
Table Egg Type		287,554	281,736	98
Hatching Egg Type		59,726	60,219	101
Broiler-Type Hatching		56,926	57,377	101
Egg-Type Hatching		2,800	2,842	102
Eggs per 100 Layers on Apr 1	Number			
All Layers		73.0	72.4	99
Table Egg Type		75.3	74.8	99
Hatching Egg Type		61.4	61.2	100
Broiler-Type Hatching		60.6	60.4	100
Egg-Type Hatching		78.8	76.8	97
Forced Molt Layers on Apr 1	Percent			
Percent Being Molted		2.8	2.5	89
Percent with Molt Completed		23.5	21.4	91
Layers Sold for Slaughter During Mar	1,000	12,295	14,156	115
Layers Rendered, Died, Destroyed, Composted or Disappeared For Any Reason During Mar	1,000	8,188	8,061	98
Pullets on Apr 1	1,000	99,530	102,057	103
Pullets Added During Mar <sup>2</sup>	1,000	21,497	23,073	107

<sup>1</sup> Totals may not add due to rounding.

<sup>2</sup> Pullet chicks less than 3 days old added to pullet flocks.

**Layers and Eggs: Layers on Hand and Eggs Produced by State  
and United States, During February 2007-08**

State	Table Egg Layers in Flocks 30,000 and Above		All Layers <sup>1</sup>		Eggs per 100 for All Layers <sup>1</sup>	
	2007	2008 <sup>2</sup>	2007	2008 <sup>2</sup>	2007	2008 <sup>2</sup>
	<i>1,000</i>	<i>1,000</i>	<i>1,000</i>	<i>1,000</i>	<i>Number</i>	<i>Number</i>
AL	1,247	1,332	9,225	9,535	1,724	1,804
AR	4,582	3,807	14,561	14,301	1,738	1,776
CA	19,021	18,312	19,512	18,523	1,958	2,003
CO	3,326	3,362	3,825	3,905	2,196	2,254
CT	2,807	2,756	2,867	2,813	2,197	2,133
FL	10,718	10,402	11,216	10,876	2,068	2,161
GA	10,019	9,513	19,755	19,442	1,883	1,944
HI	384	330	395	353	1,620	1,728
IL	4,732	5,193	4,965	5,420	2,075	2,122
IN	24,419	23,751	25,114	24,474	2,015	2,112
IA	50,764	52,571	51,672	53,538	1,959	2,068
ME	3,955	4,172	4,017	4,240	1,917	2,123
MD	2,543	2,511	2,664	2,624	1,952	2,058
MI	8,752	8,970	9,016	9,184	2,163	2,243
MN	10,481	9,726	10,943	10,199	2,047	2,167
MS	1,674	1,634	6,672	6,376	1,784	1,882
MO	6,108	5,592	7,296	6,740	1,960	2,226
NE	11,294	9,904	11,369	9,979	2,102	2,235
NY	3,711	3,808	3,930	4,031	2,188	2,282
NC	4,071	4,830	11,902	12,757	1,815	1,944
OH	26,610	25,587	27,152	26,190	2,059	2,092
OR	2,290	2,431	2,459	2,600	2,237	2,423
PA	21,287	20,461	22,961	21,835	2,186	2,276
SC	3,595	3,330	4,807	4,583	1,914	1,898
SD	3,087	2,898	3,187	2,923	2,071	2,053
TX	14,638	14,092	19,042	19,034	2,027	2,096
VA	1,405	1,342	3,257	3,160	1,873	1,804
WA	5,731	5,355	5,798	5,424	2,121	2,212
WI	4,418	4,313	4,978	4,876	2,149	2,071
Oth Sts <sup>3</sup>	16,094	14,963	24,286	23,194	1,964	2,044
US	283,763	277,248	348,843	343,129	1,993	2,073

<sup>1</sup> Includes all layers and eggs produced in both table egg and hatching egg flocks regardless of size.

<sup>2</sup> Revised.

<sup>3</sup> Not published separately to avoid disclosing data for individual operations.



**Layers and Eggs: Layers on Hand and Eggs Produced by State  
and United States, During March 2007-08**

State	Table Egg Layers in Flocks 30,000 and Above		All Layers <sup>1</sup>		Eggs per 100 for All Layers <sup>1</sup>	
	2007	2008	2007	2008	2007	2008
	<i>1,000</i>	<i>1,000</i>	<i>1,000</i>	<i>1,000</i>	<i>Number</i>	<i>Number</i>
AL	1,279	1,289	9,371	9,545	1,921	1,928
AR	4,563	3,554	14,602	13,936	2,000	1,952
CA	19,072	18,852	19,526	19,060	2,233	2,193
CO	3,245	3,351	3,750	3,895	2,480	2,465
CT	2,843	2,770	2,906	2,832	2,443	2,331
FL	10,201	10,260	10,674	10,697	2,295	2,272
GA	10,021	9,452	19,780	19,337	2,154	2,100
HI	376	328	388	352	1,778	1,847
IL	4,614	5,089	4,846	5,316	2,291	2,333
IN	24,406	23,722	25,081	24,415	2,277	2,306
IA	51,456	52,526	52,367	53,500	2,217	2,236
ME	3,963	4,141	4,021	4,204	2,189	2,307
MD	2,413	2,425	2,543	2,555	2,281	2,192
MI	8,869	9,025	9,133	9,239	2,442	2,457
MN	10,269	9,643	10,755	10,108	2,287	2,285
MS	1,687	1,617	6,631	6,267	1,991	2,026
MO	5,894	5,804	7,088	6,903	2,257	2,361
NE	11,148	9,691	11,223	9,766	2,290	2,386
NY	3,605	3,784	3,823	4,007	2,433	2,446
NC	3,992	4,841	11,877	12,678	2,054	2,106
OH	27,123	25,479	27,687	26,080	2,304	2,350
OR	2,293	2,428	2,471	2,603	2,428	2,574
PA	21,038	20,378	22,679	21,766	2,416	2,435
SC	3,611	3,306	4,920	4,598	2,093	2,088
SD	3,067	2,889	3,167	2,914	2,305	2,196
TX	14,484	14,106	18,895	19,118	2,297	2,249
VA	1,393	1,304	3,256	3,169	2,181	1,988
WA	5,551	5,494	5,618	5,563	2,332	2,355
WI	4,471	4,121	5,038	4,696	2,322	2,215
Oth Sts <sup>2</sup>	15,868	14,671	24,085	22,921	2,230	2,194
US	282,815	276,340	348,201	342,040	2,242	2,244

<sup>1</sup> Includes all layers and eggs produced in both table egg and hatching egg flocks regardless of size.

<sup>2</sup> Not published separately to avoid disclosing data for individual operations.

**Egg Production: By Type, State, and United States,  
February 2007-08<sup>1</sup>**

State	Total Production		Table Eggs <sup>2</sup>		Hatching Eggs <sup>2</sup>	
	2007	2008 <sup>3</sup>	2007	2008 <sup>3</sup>	2007	2008
	<i>Million Eggs</i>	<i>Million Eggs</i>	<i>Million Eggs</i>	<i>Million Eggs</i>	<i>Million Eggs</i>	<i>Million Eggs</i>
AL	159	172	26	29	133	143
AR	253	254	92	77	161	177
CA	382	371				
CO	84	88				
CT	63	60				
FL	232	235	223	226	9	9
GA	372	378	205	200	167	178
HI	6.4	6.1	6.4	6.1	0	0
IL	103	115	100	112	3	3
IN	506	517	494	505	12	12
IA	1,012	1,107	999	1,092	13	15
ME	77	90				
MD	52	54	51	53	1	1
MI	195	206				
MN	224	221	217	213	7	8
MS	119	120	36	36	83	84
MO	143	150				
NE	239	223	239	223	0	0
NY	86	92				
NC	216	248	88	114	128	134
OH	559	548				
OR	55	63	53	61	2	2
PA	502	497	484	479	18	18
SC	92	87	73	67	19	20
SD	66	60	66	60	0	0
TX	386	399				
VA	61	57	30	27	31	30
WA	123	120				
WI	107	101				
Oth Sts <sup>4</sup>	477	474	362	352	115	122
US	6,951	7,113	5,943	6,042	1,008	1,071

<sup>1</sup> Totals may not add due to rounding.

<sup>2</sup> Data by type of flock not shown for some States to avoid disclosing individual operations, data included in US totals.

<sup>3</sup> Revised.

<sup>4</sup> Not published separately to avoid disclosing data for individual operations.

**Egg Production: By Type, State, and United States,  
March 2007-08<sup>1</sup>**

State	Total Production		Table Eggs <sup>2</sup>		Hatching Eggs <sup>2</sup>	
	2007	2008	2007	2008	2007	2008
	<i>Million Eggs</i>	<i>Million Eggs</i>	<i>Million Eggs</i>	<i>Million Eggs</i>	<i>Million Eggs</i>	<i>Million Eggs</i>
AL	180	184	29	30	151	154
AR	292	272	111	83	181	189
CA	436	418				
CO	93	96				
CT	71	66				
FL	245	243	235	234	10	9
GA	426	406	239	217	187	189
HI	6.9	6.5	6.9	6.5	0	0
IL	111	124	107	120	4	4
IN	571	563	558	551	13	12
IA	1,161	1,196	1,146	1,179	15	17
ME	88	97				
MD	58	56	57	55	1	1
MI	223	227				
MN	246	231	237	223	9	8
MS	132	127	41	39	91	88
MO	160	163				
NE	257	233	257	233	0	0
NY	93	98				
NC	244	267	100	121	144	146
OH	638	613				
OR	60	67	58	65	2	2
PA	548	530	529	511	19	19
SC	103	96	80	74	23	22
SD	73	64	73	64	0	0
TX	434	430				
VA	71	63	37	29	34	34
WA	131	131				
WI	117	104				
Oth Sts <sup>3</sup>	537	503	406	372	131	131
US	7,806	7,675	6,672	6,526	1,134	1,149

<sup>1</sup> Totals may not add due to rounding.

<sup>2</sup> Data by type of flock not shown for some States to avoid disclosing individual operations, data included in US totals.

<sup>3</sup> Not published separately to avoid disclosing data for individual operations.

**Forced Molt: Percent of All Layers by Month,  
United States, 2007-08 <sup>1</sup>**

Month	Percent Being Molted		Percent with Molt Completed	
	2007	2008	2007	2008
	<i>Percent</i>	<i>Percent</i>	<i>Percent</i>	<i>Percent</i>
Jan	4.4	2.8	24.5	22.8
Feb	3.4	3.9	24.4	21.7
Mar <sup>2</sup>	2.9	2.0	24.2	22.2
Apr	2.8	2.5	23.5	21.4
May	5.4		22.2	
Jun	3.6		24.1	
Jul	4.0		24.2	
Aug	3.4		23.6	
Sep	3.5		24.1	
Oct	3.5		23.7	
Nov	2.6		24.0	
Dec	1.8		23.9	

<sup>1</sup> As of first of month.

<sup>2</sup> Revised 2008 only.

**Forced Molt: Percent of All Layers by State  
and United States, April 2007-08 <sup>1</sup>**

State	Percent Being Molted		Percent with Molt Completed	
	2007	2008	2007	2008
	<i>Percent</i>	<i>Percent</i>	<i>Percent</i>	<i>Percent</i>
AL	0.5	0.5	5.5	5.0
AR	1.5	1.5	13.0	8.0
CA	1.0	3.0	32.0	32.0
CO	3.0	2.5	19.5	17.5
CT	0.0	0.0	11.0	11.0
FL	7.0	7.5	29.5	32.5
GA	1.0	1.5	16.5	12.0
HI	10.0	8.5	57.5	61.0
IL	4.5	4.0	28.0	25.0
IN	3.5	2.0	33.5	33.0
IA	3.0	2.5	36.5	32.0
ME	0.0	0.0	0.0	0.0
MD	3.5	3.5	30.5	16.5
MI	1.0	0.0	21.0	19.5
MN	4.0	3.0	23.5	28.5
MS	2.0	2.0	10.5	9.0
MO	1.0	0.0	16.0	18.0
NE	5.0	1.5	19.0	7.0
NY	3.5	1.0	5.0	6.0
NC	0.0	0.5	8.0	8.0
OH	2.5	1.5	25.0	15.0
OR	7.5	6.5	34.0	31.5
PA	3.0	2.5	11.0	11.5
SC	1.0	6.5	23.5	25.5
SD	5.0	5.0	21.0	18.0
TX	2.0	3.5	22.5	23.5
VA	0.0	6.0	12.5	22.5
WA	6.5	5.5	39.0	33.5
WI	10.5	2.0	26.5	40.0
Oth Sts <sup>2</sup>	3.9	4.5	24.7	22.3
US	2.8	2.5	23.5	21.4

<sup>1</sup> As of first of month.

<sup>2</sup> Not published separately to avoid disclosing data for individual operations.

**Hatchery Production: Eggs in Incubators, Chicks Hatched,  
and Placements by Type, United States, March-April 2007-08**

Item	2007	2008	2008 as % of 2007
	<i>1,000</i>	<i>1,000</i>	<i>Percent</i>
Egg-Type			
Eggs in Incubators on Apr 1	38,226	37,624	98
Chicks Hatched During Mar	38,561	39,547	103
Chicks Hatched Jan thru Mar	111,495	117,263	105
Pullets Hatched During Mar for Intended Placements in Hatchery Supply Flocks	316	245	78
7-18 Months Earlier <sup>1</sup>	2,970	2,865	96
Broiler-Type			
Eggs in Incubators on Apr 1	668,290	673,687	101
Chicks Hatched During Mar	809,346	832,899	103
Chicks Hatched Jan thru Mar	2,327,495	2,425,962	104
Pullets Hatched During Mar for Intended Placements in Hatchery Supply Flocks	7,135	7,090	99
7-15 Months Earlier <sup>2</sup>	64,389	65,397	102

<sup>1</sup> 2008 includes pullet chicks hatched Sep 2006 through Aug 2007.

<sup>2</sup> 2008 includes pullet chicks hatched Dec 2006 through Aug 2007.

**Egg-Type Eggs in Incubators: By Region and United States,  
April 1, 2007-08**

Region <sup>1</sup>	2007	2008	2008 as % of 2007
	<i>1,000</i>	<i>1,000</i>	<i>Percent</i>
North Atlantic	6,812	4,792	70
E North Central	7,600	7,532	99
W North Central	8,581	9,237	108
South Atlantic	4,323	4,765	110
South Central	6,025	5,373	89
West	4,885	5,925	121
US	38,226	37,624	98

<sup>1</sup> Regional listing on page 15.

**Egg-Type Chicks Hatched: By State and United States,  
March 2007-08**

State	During March			Jan-Mar		
	2007	2008	2008 as % of 2007	2007	2008	2008 as % of 2007
	<i>1,000</i>	<i>1,000</i>	<i>Percent</i>	<i>1,000</i>	<i>1,000</i>	<i>Percent</i>
GA	2,356	2,342	99	6,786	6,874	101
IN	5,408	5,174	96	15,975	16,189	101
IA	7,817	7,520	96	21,902	22,005	100
MN	836	933	112	2,694	2,402	89
PA	5,560	4,698	84	14,913	15,019	101
Oth Sts <sup>1</sup>	16,584	18,880	114	49,225	54,774	111
US	38,561	39,547	103	111,495	117,263	105

<sup>1</sup> Not published separately to avoid disclosing data for individual operations.

**Egg-Type Chicks Hatched: By Month, United States, 2007-08**

Month	By Months			Cumulative		
	2007	2008	2008 as % of 2007	2007	2008	2008 as % of 2007
	<i>1,000</i>	<i>1,000</i>	<i>Percent</i>	<i>1,000</i>	<i>1,000</i>	<i>Percent</i>
Jan	36,195	40,167	111	36,195	40,167	111
Feb	36,739	37,549	102	72,934	77,716	107
Mar	38,561	39,547	103	111,495	117,263	105
Apr	39,254			150,749		
May	38,080			188,829		
Jun	40,641			229,470		
Jul	35,952			265,422		
Aug	36,930			302,352		
Sep	35,327			337,679		
Oct	36,332			374,011		
Nov	36,232			410,243		
Dec	35,866			446,109		

**Intended Placements: Egg-Type Pullet Chicks for Hatchery Supply  
Flocks by Month and Total, United States, 2007-08<sup>1</sup>**

Month	Pullet Chicks Hatched		2008 as % of 2007	Cumulative Potential Plcmts Relative to Current Supply Flocks 7-18 Months Earlier <sup>2</sup>	
	2007	2008		2007	2008
	<i>1,000</i>	<i>1,000</i>	<i>Percent</i>	<i>1,000</i>	<i>1,000</i>
Jan	265	210	79	2,870	3,007
Feb	165	280	170	2,947	2,871
Mar	316	245	78	2,970	2,865
Apr	274			2,855	2,905
May	191			2,889	2,867
Jun	300			2,915	2,942
Jul	183			2,873	2,982
Aug	278			2,915	2,927
Sep	300			2,880	3,042
Oct	184			2,935	2,971
Nov	281			2,955	
Dec	245			2,905	
Total	2,982				

<sup>1</sup> Reported by leading breeders. Coverage may not be 100 percent. Includes expected pullet chicks from eggs sold during the preceding month at the rate of 125 pullet chicks per 30 dozen case of eggs.

<sup>2</sup> For March 2008, includes breeder pullet chicks hatched Sep 2006 through Aug 2007. The 7-18 months represent the first laying cycle. Molting and additional laying cycles will increase the cumulative potential placements.

**Broiler-Type Eggs in Incubators: By Region  
and United States, April 1, 2007-08**

Region <sup>1</sup>	2007	2008	2008 as % of 2007
	<i>1,000</i>	<i>1,000</i>	<i>Percent</i>
North Atlantic	11,780	12,991	110
E North Central	9,750	12,094	124
W North Central	29,305	29,348	100
South Atlantic	247,619	250,185	101
South Central	343,587	343,441	100
West	26,249	25,628	98
US	668,290	673,687	101

<sup>1</sup> Regional listing on page 15.

**Broiler-Type Chicks Hatched: By State  
and United States, March 2007-08**

State	During March			Jan-Mar		
	2007	2008	2008 as % of 2007	2007	2008	2008 as % of 2007
	<i>1,000</i>	<i>1,000</i>	<i>Percent</i>	<i>1,000</i>	<i>1,000</i>	<i>Percent</i>
AL	113,341	117,903	104	327,420	345,516	106
AR	102,806	104,873	102	296,820	305,188	103
DE	14,732	14,451	98	42,144	43,179	102
FL	5,007	5,215	104	14,576	15,002	103
GA	125,524	127,686	102	362,048	373,970	103
KY	27,469	28,439	104	80,765	82,441	102
LA	14,310	14,648	102	40,331	42,170	105
MD	31,705	33,458	106	90,596	97,695	108
MS	70,717	71,018	100	200,208	206,485	103
NC	71,172	73,340	103	202,141	213,767	106
OK	25,792	23,807	92	74,707	69,753	93
PA	14,142	15,110	107	41,095	44,871	109
SC	19,720	20,254	103	57,229	58,821	103
TX	54,814	59,560	109	155,395	169,903	109
VA	22,726	23,560	104	66,361	67,762	102
CA, MO, TN, & WV	73,912	74,542	101	210,695	214,140	102
19 Sts <sup>1</sup>	787,889	807,864	103	2,262,531	2,350,663	104
Oth Sts <sup>2</sup>	21,457	25,035	117	64,964	75,299	116
US	809,346	832,899	103	2,327,495	2,425,962	104

<sup>1</sup> States in the weekly hatchery production estimating program.

<sup>2</sup> Not published separately to avoid disclosing data for individual operations.

**Broiler-Type Chicks Hatched: By Month, United States, 2007-08**

Month	By Months			Cumulative		
	2007	2008	2008 as % of 2007	2007	2008	2008 as % of 2007
	<i>1,000</i>	<i>1,000</i>	<i>Percent</i>	<i>1,000</i>	<i>1,000</i>	<i>Percent</i>
Jan	796,133	821,866	103	796,133	821,866	103
Feb	722,016	771,197	107	1,518,149	1,593,063	105
Mar	809,346	832,899	103	2,327,495	2,425,962	104
Apr	799,293			3,126,788		
May	835,773			3,962,561		
Jun	808,329			4,770,890		
Jul	818,983			5,589,873		
Aug	826,599			6,416,472		
Sep	782,152			7,198,624		
Oct	794,846			7,993,470		
Nov	760,033			8,753,503		
Dec	821,281			9,574,784		



**Intended Placements: Broiler-Type Pullet Chicks for Hatchery  
Supply Flocks by Month and Total, 2007-08 <sup>1</sup>**

Month	Pullet Chicks Hatched		2008 as % of 2007	Cumulative Potential Plcmts Relative to Current Supply Flocks 7-15 Months Earlier <sup>2</sup>	
	2007	2008		2007	2008
	<i>1,000</i>	<i>1,000</i>	<i>Percent</i>	<i>1,000</i>	<i>1,000</i>
US Place- ments					
Jan	7,015	7,012	100	64,544	65,333
Feb <sup>3</sup>	7,071	7,536	107	64,056	65,223
Mar	7,135	7,090	99	64,389	65,397
Apr	6,692			64,340	65,567
May	8,083			64,259	65,522
Jun	7,799			64,284	66,057
Jul	6,634			64,448	66,170
Aug	7,792			64,870	66,490
Sep	7,346			64,410	65,943
Oct	6,970			63,909	65,234
Nov	7,606			64,145	
Dec	7,248			64,597	
Annual Total	87,391				
Total Place- ments <sup>4</sup>					
Jan	8,772	8,706	99		
Feb <sup>5</sup>	8,811	9,498	108		
Mar	9,025	9,245	102		
Apr	8,358				
May	9,780				
Jun	9,435				
Jul	8,037				
Aug	9,466				
Sep	8,994				
Oct	9,076				
Nov	9,204				
Dec	9,043				
Annual Total	108,001				

<sup>1</sup> Reported by leading breeders. Coverage may not be 100 percent. Includes expected pullet chicks from eggs sold during the preceding month at the rate of 125 pullet chicks per 30 dozen case of eggs.

<sup>2</sup> For Mar 2008, includes breeder pullet chicks hatched Dec 2006 through Aug 2007.

<sup>3</sup> Revised 2008 pullet chicks hatched and cumulative placements for September 2008.

<sup>4</sup> U.S. production of intended placements worldwide.

<sup>5</sup> Revised 2008 only.

## Regional Listing

North Atlantic: CT, ME, MA, NH, NJ, NY, PA, RI, VT.  
East North Central: IL, IN, MI, OH, WI.  
West North Central: IA, KS, MN, MO, NE, ND, SD.  
South Atlantic: DE, FL, GA, MD, NC, SC, VA, WV.  
South Central: AL, AR, KY, LA, MS, OK, TN, TX.  
West: AK, AZ, CA, CO, HI, ID, MT, NM, NV, OR, UT, WA, WY.

## Information Contacts

Listed below are the commodity specialists in the Livestock Branch of the National Agricultural Statistics Service to contact for additional information.

Dan Kerestes, Chief, Livestock Branch..... (202) 720-3570

Bruce Boess, Head, Poultry and Specialty Commodities Section ..... (202) 720-4447

David Colwell - Cold Storage ..... (202) 720-8784

Fleming Gibson - Egg Products, Poultry Slaughter, Catfish Processing, Mink ..... (202) 690-3237

Sharyn Lavender - Broiler Hatchery, Chicken Hatchery, Honey ..... (202) 720-3244

Kim Linonis - Layers, Eggs..... (202) 690-8632

Toby Paterson - Catfish Production, Trout Production, Census of Aquaculture,  
Turkey Hatchery, Turkeys Raised ..... (202) 720-0585

## Reliability of Chickens and Eggs Estimates

**Survey Procedures:** Primary data for the "**Chickens and Eggs**" report are from weekly and/or monthly questionnaires sent to producers. An attempt is made to collect information for layer and egg estimates from each known contractor and independent producer who has at least 30,000 table egg layers, flocks of hatchery supply layers, or pullet only operations with at least 500 pullets. Coverage for operations with less than 30,000 table egg layers are estimated each month based on data reported in December. Approximately 650 contractors, independent egg producers, and pullet only operations are contacted each month. All known hatcheries, approximately 300, are contacted for information on a weekly and/or monthly basis.

**Estimating Procedures:** Sound statistical methodology is employed to derive estimates from the reported data. All data are analyzed for unusual values. Data from each operation are compared to their own past operating profile and to trends from similar operations. Data for missing operations are estimated based on similar operations or historical data. NASS field offices prepare these estimates by using a combination of survey indications and historic trends. Individual State estimates are reviewed by the Agricultural Statistics Board for reasonableness. Individual hatchery data are summed to State, regional, and U.S. totals.

For chicken hatcheries, chicks hatched consist of all chicks of domesticated breeds including males and chicks destined for hatchery supply flocks and research purposes. Eggs set are eggs in incubators for the purpose of hatching. The relationship of egg-type chicks hatched to chicken inventory and poultry marketings are carefully monitored. The disposition of egg-type chicks hatched prior to placement into the laying flock can vary significantly, which can make comparisons to changes in layer inventory inconsistent over time. Broiler chicks placed are specifically placed on feed for meat production. Intended placement data reported by leading breeders include pullet chicks expected from eggs sold the preceding month. The breeders in this report account for a large percentage of replacement pullets for hatchery supply flocks. Production of replacement pullets by these breeders indicates the number of pullets available to hatchery supply layer flocks several months before the pullets will actually move into the laying flocks. "Hatchery Supply Flocks" include all generations of layers which could lay eggs to supply a hatchery. This includes the generations of parents, grandparents, great-grandparents, pedigree, etc. Also included are research flocks, vaccine flocks, and specific pathogen-free flocks. The broiler cumulative potential placements are a moving total of the intended placements 7-15 months earlier. The egg-type cumulative potential placements of 7-18 months earlier represent the first laying cycle. Molting and additional laying cycles will increase the cumulative potential placements of egg-type hatching flocks.

**Revision Policy:** The previous month's estimates are subject to revision if late reports or corrected data indicates a different level. Additionally, revisions after the monthly report will be made at the end of the marketing year and published in the annual reports of "**Chickens and Eggs Summary**" and "**Hatchery Production**".

**Reliability:** Estimates are based on a census of all known contractors and independent producers who have at least 30,000 table egg layers, flocks of hatchery supply layers, pullet only operations with at least 500 pullets, or operating hatcheries and therefore, have no sampling error. However, estimates are subject to errors such as omission, duplication, and mistakes in reporting, recording, and processing the data. While these errors cannot be measured directly, they are minimized through strict quality controls in the data collection process and a careful review of all reported data for consistency and reasonableness.

## ACCESS TO REPORTS!!

---

For your convenience, there are several ways to obtain NASS reports, data products, and services:

### INTERNET ACCESS

All NASS reports are available free of charge on the worldwide Internet. For access, connect to the Internet and go to the NASS Home Page at [www.nass.usda.gov](http://www.nass.usda.gov).

### E-MAIL SUBSCRIPTION

All NASS reports are available by subscription free of charge direct to your e-mail address. Starting with the NASS Home Page at [www.nass.usda.gov](http://www.nass.usda.gov), under the right navigation, *Receive reports by Email*, click on **National** or **State**. Follow the instructions on the screen.

-----

### PRINTED REPORTS OR DATA PRODUCTS

**CALL OUR TOLL-FREE ORDER DESK: 800-999-6779 (U.S. and Canada)**  
**Other areas, please call 703-605-6220      FAX: 703-605-6900**  
**(Visa, MasterCard, check, or money order acceptable for payment.)**

-----

### ASSISTANCE

For **assistance** with general agricultural statistics or further information about NASS or its products or services, contact the **Agricultural Statistics Hotline** at **800-727-9540**, 7:30 a.m. to 4:00 p.m. ET, or e-mail: [nass@nass.usda.gov](mailto:nass@nass.usda.gov).

The U.S. Department of Agriculture (USDA) prohibits discrimination in all its programs and activities on the basis of race, color, national origin, age, disability, and where applicable, sex, marital status, familial status, parental status, religion, sexual orientation, genetic information, political beliefs, reprisal, or because all or a part of an individual's income is derived from any public assistance program. (Not all prohibited bases apply to all programs.) Persons with disabilities who require alternative means for communication of program information (Braille, large print, audiotape, etc.) should contact USDA's TARGET Center at (202) 720-2600 (voice and TDD).

To file a complaint of discrimination, write to USDA, Director, Office of Civil Rights, 1400 Independence Avenue, S.W., Washington, D.C. 20250-9410, or call (800) 795-3272 (voice) or (202) 720-6382 (TDD). USDA is an equal opportunity provider and employer.