

# Chickens and Eggs

---

Released May 23, 2008, by the National Agricultural Statistics Service (NASS), Agricultural Statistics Board, U.S. Department of Agriculture. For information on "Layers and Eggs" call Kim Linonis at (202) 690-8632, for "Chicks Hatched" call Sharyn Lavender at (202) 720-3244, office hours 7:30 a.m. to 4:00 p.m. ET.

## **April Egg Production Down 1 Percent**

U.S. egg production totaled 7.38 billion during April 2008, down 1 percent from last year. Production included 6.28 billion table eggs, and 1.11 billion hatching eggs, of which 1.04 billion were broiler-type and 66 million were egg-type. The total number of layers during April 2008 averaged 341 million, down 1 percent from last year. April egg production per 100 layers was 2,164 eggs, up slightly from April 2007.

All layers in the U.S. on May 1, 2008 totaled 341 million, down 1 percent from last year. The 341 million layers consisted of 280 million layers producing table or market type eggs, 57.7 million layers producing broiler-type hatching eggs, and 2.84 million layers producing egg-type hatching eggs. Rate of lay per day on May 1, 2008, averaged 71.8 eggs per 100 layers, up 1 percent from May 1, 2007.

## **Egg-Type Chicks Hatched Up 5 Percent**

Egg-type chicks hatched during April 2008 totaled 41.1 million, up 5 percent from April 2007. Eggs in incubators totaled 39.6 million on May 1, 2008, up 10 percent from a year ago.

Domestic placements of egg-type pullet chicks for future hatchery supply flocks by leading breeders totaled 264 thousand during April 2008, down 4 percent from April 2007.

## **Broiler-Type Chicks Hatched Down Slightly**

Broiler-type chicks hatched during April 2008 totaled 797 million, down slightly from April 2007. Eggs in incubators totaled 665 million on May 1, 2008, down 2 percent from a year earlier.

Leading breeders placed 6.87 million broiler-type pullet chicks for future domestic hatchery supply flocks during April 2008, up 3 percent from April 2007.



## Contents

	Page
U.S. Average Number of Layers on Hand and Egg Production.....	1
U.S. Layers on Hand and Eggs Produced by Type, Forced Molt, and Pullets .....	3
Layers on Hand and Eggs Produced by State.....	5
Egg Production by Type and State .....	7
Forced Molt .....	9
U.S. Hatchery Production Summary .....	10
Egg-Type Hatchery .....	11
Egg-Type Intended Placements .....	12
Broiler-Type Hatchery .....	12
Broiler-Type Intended Placements .....	14
Regional Listing .....	15
Information Contacts.....	15
Reliability of Chickens and Eggs Estimates.....	16

**All Layers: Average Number on Hand During the Month,  
United States, 2006-08**

Month	2006	2007	2008
	<i>1,000 Layers</i>	<i>1,000 Layers</i>	<i>1,000 Layers</i>
Dec <sup>1</sup>	349,699	349,862	344,965
Jan	351,313	348,897	344,791
Feb	351,754	348,843	343,129
Mar <sup>2</sup>	352,116	348,201	341,906
Apr	350,398	345,578	341,159
May	347,069	342,469	
Jun	344,631	340,237	
Jul	343,285	340,035	
Aug	343,611	340,651	
Sep	345,217	340,984	
Oct	346,608	342,637	
Nov	348,853	344,229	

<sup>1</sup> December preceding year.

<sup>2</sup> Revised 2008 only.

**Eggs: Production During the Month by Type,  
United States, 2007-08 <sup>1</sup>**

Month	Total Eggs		Table Eggs		Hatching Eggs	
	2007	2008	2007	2008	2007	2008
	<i>Million Eggs</i>	<i>Million Eggs</i>	<i>Million Eggs</i>	<i>Million Eggs</i>	<i>Million Eggs</i>	<i>Million Eggs</i>
Dec <sup>2</sup>	7,815	7,784	6,709	6,654	1,106	1,129
Jan	7,675	7,647	6,561	6,508	1,114	1,139
Feb	6,951	7,113	5,943	6,042	1,008	1,071
Mar <sup>3</sup>	7,806	7,673	6,672	6,525	1,134	1,148
Apr	7,472	7,384	6,367	6,278	1,105	1,106
May	7,622		6,475		1,148	
Jun	7,380		6,268		1,113	
Jul	7,599		6,461		1,138	
Aug	7,594		6,463		1,131	
Sep	7,393		6,296		1,097	
Oct	7,726		6,594		1,132	
Nov	7,542		6,451		1,090	
During Year	90,581		77,266		13,317	

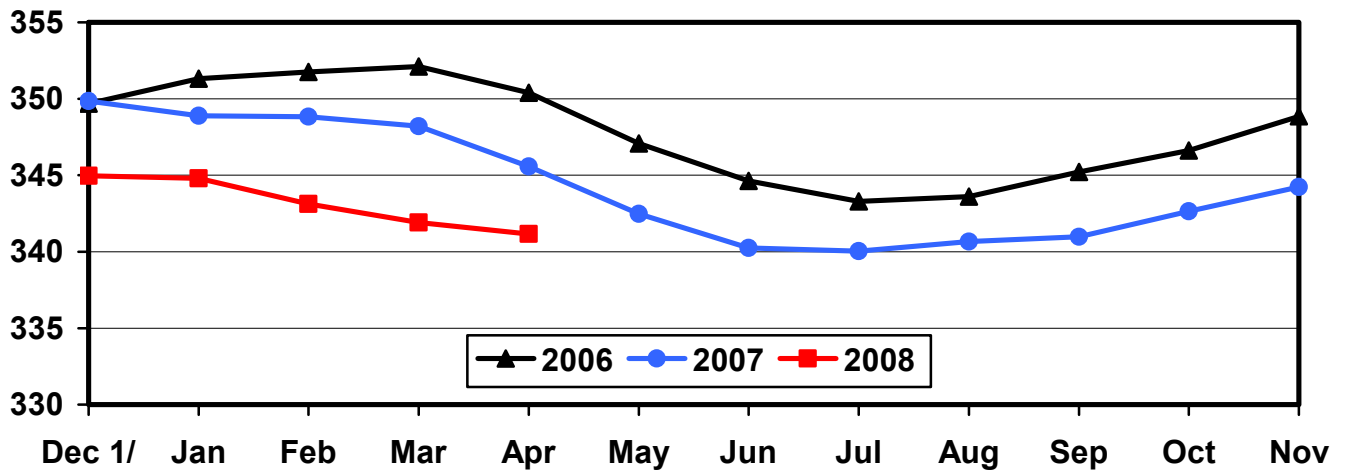
<sup>1</sup> Totals may not add due to rounding.

<sup>2</sup> December preceding year.

<sup>3</sup> Revised 2008 only.

## U.S. Average Number of Layers During the Month

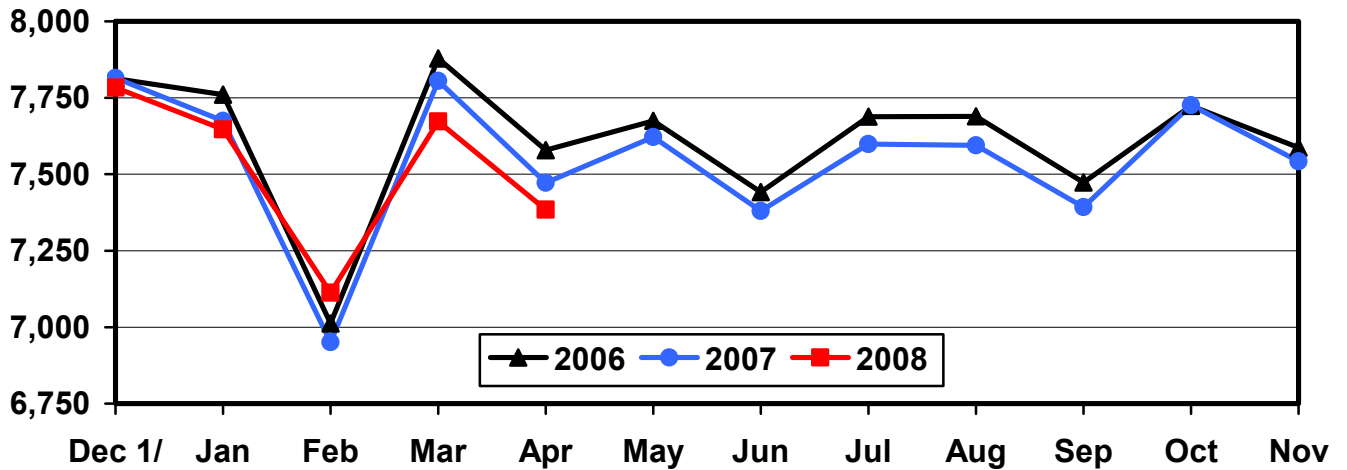
Million Layers



1/ Previous Year

## U.S. All Egg Production During the Month

Million Eggs



1/ Previous Year

**Layers and Eggs: Layers on Hand and Eggs Produced by Type,  
and Forced Molt, United States, March-April 2007-08 <sup>1</sup>**

Item	Unit	2007	2008 <sup>2</sup>	2008 as % of 2007
Layers During Mar	1,000			
All Layers		348,201	341,906	98
Table Egg Type		288,338	281,610	98
Hatching Egg Type		59,863	60,296	101
Broiler-Type Hatching		57,047	57,456	101
Egg-Type Hatching		2,816	2,840	101
Eggs per 100 Layers During Mar	Number			
All Layers		2,242	2,244	100
Table Egg Type		2,314	2,317	100
Hatching Egg Type		1,894	1,904	101
Broiler-Type Hatching		1,869	1,881	101
Egg-Type Hatching		2,415	2,359	98
Eggs Produced During Mar	Million			
All Layers		7,806	7,673	98
Table Egg Type		6,672	6,525	98
Hatching Egg Type		1,134	1,148	101
Broiler-Type Hatching		1,066	1,081	101
Egg-Type Hatching		68	67	99
Layers on Apr 1	1,000			
All Layers		347,280	341,686	98
Table Egg Type		287,554	281,571	98
Hatching Egg Type		59,726	60,115	101
Broiler-Type Hatching		56,926	57,273	101
Egg-Type Hatching		2,800	2,842	102
Eggs per 100 Layers on Apr 1	Number			
All Layers		73.0	72.4	99
Table Egg Type		75.3	74.8	99
Hatching Egg Type		61.4	61.2	100
Broiler-Type Hatching		60.6	60.4	100
Egg-Type Hatching		78.8	76.8	97
Forced Molt Layers on Apr 1	Percent			
Percent Being Molted		2.8	2.7	96
Percent with Molt Completed		23.5	21.2	90
Layers Sold for Slaughter During Mar	1,000	12,295	14,151	115
Layers Rendered, Died, Destroyed, Composted or Disappeared For Any Reason During Mar	1,000	8,188	8,063	98
Pullets on Apr 1	1,000	99,530	102,123	103
Pullets Added During Mar <sup>3</sup>	1,000	21,497	23,070	107

<sup>1</sup> Totals may not add due to rounding.

<sup>2</sup> Revised.

<sup>3</sup> Pullet chicks less than 3 days old added to pullet flocks.

**Layers and Eggs: Layers on Hand and Eggs Produced by Type,  
and Forced Molt, United States, April-May 2007-08<sup>1</sup>**

Item	Unit	2007	2008	2008 as % of 2007
Layers During Apr	1,000			
All Layers		345,578	341,159	99
Table Egg Type		285,708	280,819	98
Hatching Egg Type		59,870	60,340	101
Broiler-Type Hatching		57,031	57,494	101
Egg-Type Hatching		2,839	2,846	100
Eggs per 100 Layers During Apr	Number			
All Layers		2,162	2,164	100
Table Egg Type		2,228	2,236	100
Hatching Egg Type		1,846	1,833	99
Broiler-Type Hatching		1,822	1,809	99
Egg-Type Hatching		2,325	2,319	100
Eggs Produced During Apr	Million			
All Layers		7,472	7,384	99
Table Egg Type		6,367	6,278	99
Hatching Egg Type		1,105	1,106	100
Broiler-Type Hatching		1,039	1,040	100
Egg-Type Hatching		66	66	100
Layers on May 1	1,000			
All Layers		343,835	340,593	99
Table Egg Type		283,840	280,048	99
Hatching Egg Type		59,995	60,545	101
Broiler-Type Hatching		57,124	57,704	101
Egg-Type Hatching		2,871	2,841	99
Eggs per 100 Layers on May 1	Number			
All Layers		71.1	71.8	101
Table Egg Type		73.1	74.2	102
Hatching Egg Type		61.5	61.1	99
Broiler-Type Hatching		60.7	60.2	99
Egg-Type Hatching		77.2	78.9	102
Forced Molt Layers on May 1	Percent			
Percent Being Molted		5.4	3.9	72
Percent with Molt Completed		22.2	20.5	92
Layers Sold for Slaughter During Apr	1,000	14,133	14,194	100
Layers Rendered, Died, Destroyed, Composted or Disappeared For Any Reason During Apr	1,000	8,397	7,784	93
Pullets on May 1	1,000	99,951	103,377	103
Pullets Added During Apr <sup>2</sup>	1,000	21,219	22,969	108

<sup>1</sup> Totals may not add due to rounding.

<sup>2</sup> Pullet chicks less than 3 days old added to pullet flocks.

**Layers and Eggs: Layers on Hand and Eggs Produced by State  
and United States, During March 2007-08**

State	Table Egg Layers in Flocks 30,000 and Above		All Layers <sup>1</sup>		Eggs per 100 for All Layers <sup>1</sup>	
	2007	2008 <sup>2</sup>	2007	2008 <sup>2</sup>	2007	2008 <sup>2</sup>
	<i>1,000</i>	<i>1,000</i>	<i>1,000</i>	<i>1,000</i>	<i>Number</i>	<i>Number</i>
AL	1,279	1,289	9,371	9,493	1,921	1,928
AR	4,563	3,554	14,602	13,936	2,000	1,952
CA	19,072	18,852	19,526	19,060	2,233	2,193
CO	3,245	3,351	3,750	3,895	2,480	2,465
CT	2,843	2,770	2,906	2,832	2,443	2,331
FL	10,201	10,260	10,674	10,697	2,295	2,272
GA	10,021	9,452	19,780	19,337	2,154	2,100
HI	376	328	388	352	1,778	1,847
IL	4,614	5,089	4,846	5,316	2,291	2,333
IN	24,406	23,722	25,081	24,415	2,277	2,306
IA	51,456	52,416	52,367	53,390	2,217	2,236
ME	3,963	4,141	4,021	4,204	2,189	2,307
MD	2,413	2,425	2,543	2,555	2,281	2,192
MI	8,869	9,025	9,133	9,239	2,442	2,457
MN	10,269	9,643	10,755	10,108	2,287	2,285
MS	1,687	1,617	6,631	6,267	1,991	2,026
MO	5,894	5,804	7,088	6,903	2,257	2,361
NE	11,148	9,691	11,223	9,766	2,290	2,386
NY	3,605	3,784	3,823	4,007	2,433	2,446
NC	3,992	4,869	11,877	12,706	2,054	2,109
OH	27,123	25,479	27,687	26,080	2,304	2,350
OR	2,293	2,428	2,471	2,603	2,428	2,574
PA	21,038	20,378	22,679	21,766	2,416	2,435
SC	3,611	3,306	4,920	4,598	2,093	2,088
SD	3,067	2,889	3,167	2,914	2,305	2,196
TX	14,484	14,106	18,895	19,118	2,297	2,249
VA	1,393	1,304	3,256	3,169	2,181	1,988
WA	5,551	5,494	5,618	5,563	2,332	2,355
WI	4,471	4,121	5,038	4,696	2,322	2,215
Oth Sts <sup>3</sup>	15,868	14,671	24,085	22,921	2,230	2,194
US	282,815	276,258	348,201	341,906	2,242	2,244

<sup>1</sup> Includes all layers and eggs produced in both table egg and hatching egg flocks regardless of size.

<sup>2</sup> Revised.

<sup>3</sup> Not published separately to avoid disclosing data for individual operations.



**Layers and Eggs: Layers on Hand and Eggs Produced by State  
and United States, During April 2007-08**

State	Table Egg Layers in Flocks 30,000 and Above		All Layers <sup>1</sup>		Eggs per 100 for All Layers <sup>1</sup>	
	2007	2008	2007	2008	2007	2008
	<i>1,000</i>	<i>1,000</i>	<i>1,000</i>	<i>1,000</i>	<i>Number</i>	<i>Number</i>
AL	1,206	1,256	9,248	9,436	1,881	1,855
AR	4,465	3,586	14,439	13,894	1,925	1,893
CA	18,913	19,615	19,355	19,825	2,118	2,083
CO	3,216	3,380	3,737	3,894	2,328	2,337
CT	2,943	2,846	3,004	2,905	2,330	2,306
FL	9,836	10,012	10,315	10,460	2,220	2,113
GA	9,815	9,106	19,593	18,940	2,042	2,006
HI	368	326	380	351	1,763	1,738
IL	4,508	5,166	4,740	5,393	2,110	2,169
IN	24,225	23,569	24,878	24,280	2,215	2,224
IA	51,534	52,783	52,475	53,727	2,180	2,196
ME	3,913	4,025	3,977	4,094	2,188	2,223
MD	2,336	2,446	2,478	2,592	2,300	2,199
MI	8,826	8,987	9,090	9,199	2,387	2,348
MN	10,146	9,648	10,641	10,142	2,255	2,218
MS	1,597	1,517	6,515	6,250	1,903	1,920
MO	5,732	5,801	6,880	6,911	2,238	2,286
NE	11,033	9,666	11,108	9,741	2,152	2,341
NY	3,619	3,718	3,841	3,941	2,343	2,411
NC	4,182	5,000	12,075	12,700	1,988	2,024
OH	26,705	25,184	27,274	25,790	2,196	2,292
OR	2,402	2,419	2,579	2,604	2,326	2,419
PA	20,892	20,101	22,560	21,510	2,336	2,343
SC	3,532	3,183	4,851	4,491	1,958	2,115
SD	3,048	2,880	3,148	2,905	2,224	2,169
TX	14,196	13,782	18,704	18,820	2,203	2,125
VA	1,383	1,279	3,252	3,182	1,999	1,948
WA	5,481	5,536	5,548	5,605	2,235	2,302
WI	4,468	4,002	5,031	4,586	2,226	2,072
Oth Sts <sup>2</sup>	15,665	14,647	23,862	22,991	2,137	2,096
US	280,185	275,466	345,578	341,159	2,162	2,164

<sup>1</sup> Includes all layers and eggs produced in both table egg and hatching egg flocks regardless of size.

<sup>2</sup> Not published separately to avoid disclosing data for individual operations.

**Egg Production: By Type, State, and United States,  
March 2007-08<sup>1</sup>**

State	Total Production		Table Eggs <sup>2</sup>		Hatching Eggs <sup>2</sup>	
	2007	2008 <sup>3</sup>	2007	2008 <sup>3</sup>	2007	2008 <sup>3</sup>
	<i>Million Eggs</i>	<i>Million Eggs</i>	<i>Million Eggs</i>	<i>Million Eggs</i>	<i>Million Eggs</i>	<i>Million Eggs</i>
AL	180	183	29	30	151	153
AR	292	272	111	83	181	189
CA	436	418				
CO	93	96				
CT	71	66				
FL	245	243	235	234	10	9
GA	426	406	239	217	187	189
HI	6.9	6.5	6.9	6.5	0	0
IL	111	124	107	120	4	4
IN	571	563	558	551	13	12
IA	1,161	1,194	1,146	1,177	15	17
ME	88	97				
MD	58	56	57	55	1	1
MI	223	227				
MN	246	231	237	223	9	8
MS	132	127	41	39	91	88
MO	160	163				
NE	257	233	257	233	0	0
NY	93	98				
NC	244	268	100	122	144	146
OH	638	613				
OR	60	67	58	65	2	2
PA	548	530	529	511	19	19
SC	103	96	80	74	23	22
SD	73	64	73	64	0	0
TX	434	430				
VA	71	63	37	29	34	34
WA	131	131				
WI	117	104				
Oth Sts <sup>4</sup>	537	503	406	372	131	131
US	7,806	7,673	6,672	6,525	1,134	1,148

<sup>1</sup> Totals may not add due to rounding.

<sup>2</sup> Data by type of flock not shown for some States to avoid disclosing individual operations, data included in US totals.

<sup>3</sup> Revised.

<sup>4</sup> Not published separately to avoid disclosing data for individual operations.

**Egg Production: By Type, State, and United States,  
April 2007-08<sup>1</sup>**

State	Total Production		Table Eggs <sup>2</sup>		Hatching Eggs <sup>2</sup>	
	2007	2008	2007	2008	2007	2008
	<i>Million Eggs</i>	<i>Million Eggs</i>	<i>Million Eggs</i>	<i>Million Eggs</i>	<i>Million Eggs</i>	<i>Million Eggs</i>
AL	174	175	27	28	147	147
AR	278	263	102	81	176	182
CA	410	413				
CO	87	91				
CT	70	67				
FL	229	221	219	213	10	8
GA	400	380	218	199	182	181
HI	6.7	6.1	6.7	6.1	0	0
IL	100	117	97	114	3	3
IN	551	540	539	528	12	12
IA	1,144	1,180	1,128	1,164	16	16
ME	87	91				
MD	57	57	55	55	2	2
MI	217	216				
MN	240	225	232	217	8	8
MS	124	120	36	33	88	87
MO	154	158				
NE	239	228	239	228	0	0
NY	90	95				
NC	240	257	101	120	139	137
OH	599	591				
OR	60	63	58	61	2	2
PA	527	504	508	485	19	19
SC	95	95	73	73	22	22
SD	70	63	70	63	0	0
TX	412	400				
VA	65	62	32	28	33	34
WA	124	129				
WI	112	95				
Oth Sts <sup>3</sup>	510	482	381	354	129	128
US	7,472	7,384	6,367	6,278	1,105	1,106

<sup>1</sup> Totals may not add due to rounding.

<sup>2</sup> Data by type of flock not shown for some States to avoid disclosing individual operations, data included in US totals.

<sup>3</sup> Not published separately to avoid disclosing data for individual operations.

**Forced Molt: Percent of All Layers by Month,  
United States, 2007-08 <sup>1</sup>**

Month	Percent Being Molted		Percent with Molt Completed	
	2007	2008	2007	2008
	<i>Percent</i>	<i>Percent</i>	<i>Percent</i>	<i>Percent</i>
Jan	4.4	2.8	24.5	22.8
Feb	3.4	3.9	24.4	21.7
Mar	2.9	2.0	24.2	22.2
Apr <sup>2</sup>	2.8	2.7	23.5	21.2
May	5.4	3.9	22.2	20.5
Jun	3.6		24.1	
Jul	4.0		24.2	
Aug	3.4		23.6	
Sep	3.5		24.1	
Oct	3.5		23.7	
Nov	2.6		24.0	
Dec	1.8		23.9	

<sup>1</sup> As of first of month.

<sup>2</sup> Revised 2008 only.

**Forced Molt: Percent of All Layers by State  
and United States, May 2007-08 <sup>1</sup>**

State	Percent Being Molted		Percent with Molt Completed	
	2007	2008	2007	2008
	<i>Percent</i>	<i>Percent</i>	<i>Percent</i>	<i>Percent</i>
AL	1.5	0.5	4.5	4.5
AR	3.0	1.5	11.5	9.0
CA	9.0	7.5	27.5	29.5
CO	6.0	3.5	14.5	20.5
CT	6.0	0.0	11.0	11.0
FL	10.0	8.5	30.5	30.0
GA	5.0	4.5	13.0	8.5
HI	7.0	6.0	59.0	52.0
IL	11.5	5.0	30.0	24.5
IN	6.5	5.0	32.5	32.0
IA	7.0	3.0	36.0	33.5
ME	0.0	0.0	0.0	0.0
MD	8.0	6.5	33.5	16.5
MI	0.0	6.5	21.0	19.5
MN	3.0	1.5	23.5	28.5
MS	5.0	3.5	7.5	9.0
MO	6.0	3.0	17.0	15.5
NE	5.0	0.0	14.0	4.5
NY	3.0	1.0	6.0	5.5
NC	0.5	1.0	7.5	8.0
OH	3.0	4.5	21.5	12.5
OR	14.0	8.0	32.5	25.5
PA	4.5	3.0	11.0	12.0
SC	5.0	2.5	23.5	19.0
SD	5.0	5.0	21.0	18.0
TX	5.5	5.0	21.5	24.0
VA	9.0	9.0	9.5	13.0
WA	6.5	7.5	44.0	31.0
WI	7.0	5.0	25.5	30.0
Oth Sts <sup>2</sup>	6.0	4.0	23.1	21.2
US	5.4	3.9	22.2	20.5

<sup>1</sup> As of first of month.

<sup>2</sup> Not published separately to avoid disclosing data for individual operations.

**Hatchery Production: Eggs in Incubators, Chicks Hatched,  
and Placements by Type, United States, April-May 2007-08**

Item	2007	2008	2008 as % of 2007
	<i>1,000</i>	<i>1,000</i>	<i>Percent</i>
Egg-Type			
Eggs in Incubators on May 1	35,948	39,643	110
Chicks Hatched During Apr	39,254	41,051	105
Chicks Hatched Jan thru Apr	150,749	158,314	105
Pullets Hatched During Apr for Intended Placements in Hatchery Supply Flocks	274	264	96
7-18 Months Earlier <sup>1</sup>	2,855	2,905	102
Broiler-Type			
Eggs in Incubators on May 1	679,796	665,215	98
Chicks Hatched During Apr	799,293	797,481	100
Chicks Hatched Jan thru Apr	3,126,788	3,223,443	103
Pullets Hatched During Apr for Intended Placements in Hatchery Supply Flocks	6,692	6,867	103
7-15 Months Earlier <sup>2</sup>	64,340	65,567	102

<sup>1</sup> 2008 includes pullet chicks hatched Oct 2006 through Sep 2007.

<sup>2</sup> 2008 includes pullet chicks hatched Jan 2007 through Sep 2007.

**Egg-Type Eggs in Incubators: By Region and United States,  
May 1, 2007-08**

Region <sup>1</sup>	2007	2008	2008 as % of 2007
	<i>1,000</i>	<i>1,000</i>	<i>Percent</i>
North Atlantic	6,265	5,246	84
E North Central	6,831	8,459	124
W North Central	8,903	9,138	103
South Atlantic	4,630	4,958	107
South Central	5,015	6,264	125
West	4,304	5,578	130
US	35,948	39,643	110

<sup>1</sup> Regional listing on page 15.

**Egg-Type Chicks Hatched: By State and United States,  
April 2007-08**

State	During April			Jan-Apr		
	2007	2008	2008 as % of 2007	2007	2008	2008 as % of 2007
	<i>1,000</i>	<i>1,000</i>	<i>Percent</i>	<i>1,000</i>	<i>1,000</i>	<i>Percent</i>
GA	2,316	2,303	99	9,102	9,177	101
IN	6,003	4,892	81	21,978	21,081	96
IA	7,796	8,426	108	29,698	30,431	102
MN	1,107	839	76	3,801	3,241	85
PA	5,042	5,331	106	19,955	20,350	102
Oth Sts <sup>1</sup>	16,990	19,260	113	66,215	74,034	112
US	39,254	41,051	105	150,749	158,314	105

<sup>1</sup> Not published separately to avoid disclosing data for individual operations.

**Egg-Type Chicks Hatched: By Month, United States, 2007-08**

Month	By Months			Cumulative		
	2007	2008	2008 as % of 2007	2007	2008	2008 as % of 2007
	<i>1,000</i>	<i>1,000</i>	<i>Percent</i>	<i>1,000</i>	<i>1,000</i>	<i>Percent</i>
Jan	36,195	40,167	111	36,195	40,167	111
Feb	36,739	37,549	102	72,934	77,716	107
Mar	38,561	39,547	103	111,495	117,263	105
Apr	39,254	41,051	105	150,749	158,314	105
May	38,080			188,829		
Jun	40,641			229,470		
Jul	35,952			265,422		
Aug	36,930			302,352		
Sep	35,327			337,679		
Oct	36,332			374,011		
Nov	36,232			410,243		
Dec	35,866			446,109		

**Intended Placements: Egg-Type Pullet Chicks for Hatchery Supply  
Flocks by Month and Total, United States, 2007-08<sup>1</sup>**

Month	Pullet Chicks Hatched		2008 as % of 2007	Cumulative Potential Plcmts Relative to Current Supply Flocks 7-18 Months Earlier <sup>2</sup>	
	2007	2008		2007	2008
	<i>1,000</i>	<i>1,000</i>	<i>Percent</i>	<i>1,000</i>	<i>1,000</i>
Jan	265	210	79	2,870	3,007
Feb	165	280	170	2,947	2,871
Mar	316	245	78	2,970	2,865
Apr	274	264	96	2,855	2,905
May	191			2,889	2,867
Jun	300			2,915	2,942
Jul	183			2,873	2,982
Aug	278			2,915	2,927
Sep	300			2,880	3,042
Oct	184			2,935	2,971
Nov	281			2,955	2,961
Dec	245			2,905	
Total	2,982				

<sup>1</sup> Reported by leading breeders. Coverage may not be 100 percent. Includes expected pullet chicks from eggs sold during the preceding month at the rate of 125 pullet chicks per 30 dozen case of eggs.

<sup>2</sup> For April 2008, includes breeder pullet chicks hatched Oct 2006 through Sep 2007. The 7-18 months represent the first laying cycle. Molting and additional laying cycles will increase the cumulative potential placements.

**Broiler-Type Eggs in Incubators: By Region  
and United States, May 1, 2007-08**

Region <sup>1</sup>	2007	2008	2008 as % of 2007
	<i>1,000</i>	<i>1,000</i>	<i>Percent</i>
North Atlantic	12,148	12,883	106
E North Central	11,084	12,425	112
W North Central	30,071	29,746	99
South Atlantic	252,344	243,720	97
South Central	347,709	340,953	98
West	26,440	25,488	96
US	679,796	665,215	98

<sup>1</sup> Regional listing on page 15.

**Broiler-Type Chicks Hatched: By State  
and United States, April 2007-08**

State	During April			Jan-Apr		
	2007	2008	2008 as % of 2007	2007	2008	2008 as % of 2007
	<i>1,000</i>	<i>1,000</i>	<i>Percent</i>	<i>1,000</i>	<i>1,000</i>	<i>Percent</i>
AL	112,044	113,553	101	439,464	459,069	104
AR	100,668	97,978	97	397,488	403,166	101
DE	14,601	14,303	98	56,745	57,482	101
FL	4,990	5,038	101	19,566	20,040	102
GA	123,523	120,937	98	485,571	494,907	102
KY	27,259	28,139	103	108,024	110,580	102
LA	14,176	13,516	95	54,507	55,686	102
MD	31,455	32,386	103	122,051	130,081	107
MS	69,012	69,021	100	269,220	275,506	102
NC	70,018	70,044	100	272,159	283,811	104
OK	25,336	22,737	90	100,043	92,490	92
PA	13,833	15,173	110	54,928	60,044	109
SC	18,814	19,423	103	76,043	78,244	103
TX	54,838	55,734	102	210,233	225,637	107
VA	23,119	22,680	98	89,480	90,442	101
CA, MO, TN, & WV	72,041	72,209	100	282,736	286,349	101
19 Sts <sup>1</sup>	775,727	772,871	100	3,038,258	3,123,534	103
Oth Sts <sup>2</sup>	23,566	24,610	104	88,530	99,909	113
US	799,293	797,481	100	3,126,788	3,223,443	103

<sup>1</sup> States in the weekly hatchery production estimating program.

<sup>2</sup> Not published separately to avoid disclosing data for individual operations.

**Broiler-Type Chicks Hatched: By Month, United States, 2007-08**

Month	By Months			Cumulative		
	2007	2008	2008 as % of 2007	2007	2008	2008 as % of 2007
	<i>1,000</i>	<i>1,000</i>	<i>Percent</i>	<i>1,000</i>	<i>1,000</i>	<i>Percent</i>
Jan	796,133	821,866	103	796,133	821,866	103
Feb	722,016	771,197	107	1,518,149	1,593,063	105
Mar	809,346	832,899	103	2,327,495	2,425,962	104
Apr	799,293	797,481	100	3,126,788	3,223,443	103
May	835,773			3,962,561		
Jun	808,329			4,770,890		
Jul	818,983			5,589,873		
Aug	826,599			6,416,472		
Sep	782,152			7,198,624		
Oct	794,846			7,993,470		
Nov	760,033			8,753,503		
Dec	821,281			9,574,784		



**Intended Placements: Broiler-Type Pullet Chicks for Hatchery  
Supply Flocks by Month and Total, 2007-08 <sup>1</sup>**

Month	Pullet Chicks Hatched		2008 as % of 2007	Cumulative Potential Plcmts Relative to Current Supply Flocks 7-15 Months Earlier <sup>2</sup>	
	2007	2008		2007	2008
	<i>1,000</i>	<i>1,000</i>	<i>Percent</i>	<i>1,000</i>	<i>1,000</i>
US Place- ments					
Jan	7,015	7,012	100	64,544	65,333
Feb	7,071	7,536	107	64,056	65,223
Mar	7,135	7,090	99	64,389	65,397
Apr	6,692	6,867	103	64,340	65,567
May	8,083			64,259	65,522
Jun	7,799			64,284	66,057
Jul	6,634			64,448	66,170
Aug	7,792			64,870	66,490
Sep	7,346			64,410	65,943
Oct	6,970			63,909	65,234
Nov	7,606			64,145	65,467
Dec	7,248			64,597	
Annual Total	87,391				
Total Place- ments <sup>3</sup>					
Jan	8,772	8,706	99		
Feb	8,811	9,498	108		
Mar	9,025	9,245	102		
Apr	8,358	8,676	104		
May	9,780				
Jun	9,435				
Jul	8,037				
Aug	9,466				
Sep	8,994				
Oct	9,076				
Nov	9,204				
Dec	9,043				
Annual Total	108,001				

<sup>1</sup> Reported by leading breeders. Coverage may not be 100 percent. Includes expected pullet chicks from eggs sold during the preceding month at the rate of 125 pullet chicks per 30 dozen case of eggs.

<sup>2</sup> For Apr 2008, includes breeder pullet chicks hatched Jan 2007 through Sep 2007.

<sup>3</sup> U.S. production of intended placements worldwide.

## Regional Listing

North Atlantic: CT, ME, MA, NH, NJ, NY, PA, RI, VT.  
East North Central: IL, IN, MI, OH, WI.  
West North Central: IA, KS, MN, MO, NE, ND, SD.  
South Atlantic: DE, FL, GA, MD, NC, SC, VA, WV.  
South Central: AL, AR, KY, LA, MS, OK, TN, TX.  
West: AK, AZ, CA, CO, HI, ID, MT, NM, NV, OR, UT, WA, WY.

## Information Contacts

Listed below are the commodity specialists in the Livestock Branch of the National Agricultural Statistics Service to contact for additional information.

Dan Kerestes, Chief, Livestock Branch..... (202) 720-3570

Bruce Boess, Head, Poultry and Specialty Commodities Section ..... (202) 720-4447

David Colwell - Cold Storage ..... (202) 720-8784

Fleming Gibson - Poultry Slaughter, Turkey Hatchery, Turkeys Raised ..... (202) 690-3237

Sharyn Lavender - Broiler Hatchery, Chicken Hatchery, Honey ..... (202) 720-3244

Kim Linonis - Layers, Eggs..... (202) 690-8632

Toby Paterson - Catfish Processing, Catfish Production, Trout Production,  
Census of Aquaculture, Egg Products, Mink..... (202) 720-0585

## Reliability of Chickens and Eggs Estimates

**Survey Procedures:** Primary data for the "**Chickens and Eggs**" report are from weekly and/or monthly questionnaires sent to producers. An attempt is made to collect information for layer and egg estimates from each known contractor and independent producer who has at least 30,000 table egg layers, flocks of hatchery supply layers, or pullet only operations with at least 500 pullets. Coverage for operations with less than 30,000 table egg layers are estimated each month based on data reported in December. Approximately 650 contractors, independent egg producers, and pullet only operations are contacted each month. All known hatcheries, approximately 300, are contacted for information on a weekly and/or monthly basis.

**Estimating Procedures:** Sound statistical methodology is employed to derive estimates from the reported data. All data are analyzed for unusual values. Data from each operation are compared to their own past operating profile and to trends from similar operations. Data for missing operations are estimated based on similar operations or historical data. NASS field offices prepare these estimates by using a combination of survey indications and historic trends. Individual State estimates are reviewed by the Agricultural Statistics Board for reasonableness. Individual hatchery data are summed to State, regional, and U.S. totals.

For chicken hatcheries, chicks hatched consist of all chicks of domesticated breeds including males and chicks destined for hatchery supply flocks and research purposes. Eggs set are eggs in incubators for the purpose of hatching. The relationship of egg-type chicks hatched to chicken inventory and poultry marketings are carefully monitored. The disposition of egg-type chicks hatched prior to placement into the laying flock can vary significantly, which can make comparisons to changes in layer inventory inconsistent over time. Broiler chicks placed are specifically placed on feed for meat production. Intended placement data reported by leading breeders include pullet chicks expected from eggs sold the preceding month. The breeders in this report account for a large percentage of replacement pullets for hatchery supply flocks. Production of replacement pullets by these breeders indicates the number of pullets available to hatchery supply layer flocks several months before the pullets will actually move into the laying flocks. "Hatchery Supply Flocks" include all generations of layers which could lay eggs to supply a hatchery. This includes the generations of parents, grandparents, great-grandparents, pedigree, etc. Also included are research flocks, vaccine flocks, and specific pathogen-free flocks. The broiler cumulative potential placements are a moving total of the intended placements 7-15 months earlier. The egg-type cumulative potential placements of 7-18 months earlier represent the first laying cycle. Molting and additional laying cycles will increase the cumulative potential placements of egg-type hatching flocks.

**Revision Policy:** The previous month's estimates are subject to revision if late reports or corrected data indicates a different level. Additionally, revisions after the monthly report will be made at the end of the marketing year and published in the annual reports of "**Chickens and Eggs Summary**" and "**Hatchery Production**".

**Reliability:** Estimates are based on a census of all known contractors and independent producers who have at least 30,000 table egg layers, flocks of hatchery supply layers, pullet only operations with at least 500 pullets, or operating hatcheries and therefore, have no sampling error. However, estimates are subject to errors such as omission, duplication, and mistakes in reporting, recording, and processing the data. While these errors cannot be measured directly, they are minimized through strict quality controls in the data collection process and a careful review of all reported data for consistency and reasonableness.

## ACCESS TO REPORTS!!

---

For your convenience, there are several ways to obtain NASS reports, data products, and services:

### INTERNET ACCESS

All NASS reports are available free of charge on the worldwide Internet. For access, connect to the Internet and go to the NASS Home Page at [www.nass.usda.gov](http://www.nass.usda.gov).

### E-MAIL SUBSCRIPTION

All NASS reports are available by subscription free of charge direct to your e-mail address. Starting with the NASS Home Page at [www.nass.usda.gov](http://www.nass.usda.gov), under the right navigation, *Receive reports by Email*, click on **National** or **State**. Follow the instructions on the screen.

-----

### PRINTED REPORTS OR DATA PRODUCTS

**CALL OUR TOLL-FREE ORDER DESK: 800-999-6779 (U.S. and Canada)**  
**Other areas, please call 703-605-6220      FAX: 703-605-6900**  
**(Visa, MasterCard, check, or money order acceptable for payment.)**

-----

### ASSISTANCE

For **assistance** with general agricultural statistics or further information about NASS or its products or services, contact the **Agricultural Statistics Hotline** at **800-727-9540**, 7:30 a.m. to 4:00 p.m. ET, or e-mail: [nass@nass.usda.gov](mailto:nass@nass.usda.gov).

The U.S. Department of Agriculture (USDA) prohibits discrimination in all its programs and activities on the basis of race, color, national origin, age, disability, and where applicable, sex, marital status, familial status, parental status, religion, sexual orientation, genetic information, political beliefs, reprisal, or because all or a part of an individual's income is derived from any public assistance program. (Not all prohibited bases apply to all programs.) Persons with disabilities who require alternative means for communication of program information (Braille, large print, audiotape, etc.) should contact USDA's TARGET Center at (202) 720-2600 (voice and TDD).

To file a complaint of discrimination, write to USDA, Director, Office of Civil Rights, 1400 Independence Avenue, S.W., Washington, D.C. 20250-9410, or call (800) 795-3272 (voice) or (202) 720-6382 (TDD). USDA is an equal opportunity provider and employer.