

Chickens and Eggs

Released June 23, 2008, by the National Agricultural Statistics Service (NASS), Agricultural Statistics Board, U.S. Department of Agriculture. For information on "Layers and Eggs" call Kim Linonis at (202) 690-8632, for "Chicks Hatched" call Sharyn Lavender at (202) 720-3244, office hours 7:30 a.m. to 4:00 p.m. ET.

May Egg Production Down 1 Percent

U.S. egg production totaled 7.57 billion during May 2008, down 1 percent from last year. Production included 6.43 billion table eggs, and 1.15 billion hatching eggs, of which 1.08 billion were broiler-type and 68 million were egg-type. The total number of layers during May 2008 averaged 340 million, down 1 percent from last year. May egg production per 100 layers was 2,226 eggs, unchanged from May 2007.

All layers in the U.S. on June 1, 2008 totaled 340 million, down slightly from last year. The 340 million layers consisted of 280 million layers producing table or market type eggs, 57.0 million layers producing broiler-type hatching eggs, and 2.79 million layers producing egg-type hatching eggs. Rate of lay per day on June 1, 2008, averaged 71.7 eggs per 100 layers, down 1 percent from June 1, 2007.

Egg-Type Chicks Hatched Up 12 Percent

Egg-type chicks hatched during May 2008 totaled 42.7 million, up 12 percent from May 2007. Eggs in incubators totaled 37.6 million on June 1, 2008, down 2 percent from a year ago.

Domestic placements of egg-type pullet chicks for future hatchery supply flocks by leading breeders totaled 233 thousand during May 2008, up 22 percent from May 2007.

Broiler-Type Chicks Hatched Down 1 Percent

Broiler-type chicks hatched during May 2008 totaled 824 million, down 1 percent from May 2007. Eggs in incubators totaled 674 million on June 1, 2008, down 1 percent from a year earlier.

Leading breeders placed 7.96 million broiler-type pullet chicks for future domestic hatchery supply flocks during May 2008, down 1 percent from May 2007.

Contents

	Page
U.S. Average Number of Layers on Hand and Egg Production.....	1
U.S. Layers on Hand and Eggs Produced by Type, Forced Molt, and Pullets	3
Layers on Hand and Eggs Produced by State.....	5
Egg Production by Type and State	7
Forced Molt	9
U.S. Hatchery Production Summary	10
Egg-Type Hatchery	11
Egg-Type Intended Placements	12
Broiler-Type Hatchery	12
Broiler-Type Intended Placements	14
Reliability of Chickens and Eggs Estimates.....	15
Regional Listing	16
Information Contacts.....	16

**All Layers: Average Number on Hand During the Month,
United States, 2006-08**

Month	2006	2007	2008
	<i>1,000 Layers</i>	<i>1,000 Layers</i>	<i>1,000 Layers</i>
Dec ¹	349,699	349,862	344,965
Jan	351,313	348,897	344,791
Feb	351,754	348,843	343,129
Mar	352,116	348,201	341,906
Apr ²	350,398	345,578	341,203
May	347,069	342,469	340,319
Jun	344,631	340,237	
Jul	343,285	340,035	
Aug	343,611	340,651	
Sep	345,217	340,984	
Oct	346,608	342,637	
Nov	348,853	344,229	

¹ December preceding year.

² Revised 2008 only.

**Eggs: Production During the Month by Type,
United States, 2007-08 ¹**

Month	Total Eggs		Table Eggs		Hatching Eggs	
	2007	2008	2007	2008	2007	2008
	<i>Million Eggs</i>	<i>Million Eggs</i>	<i>Million Eggs</i>	<i>Million Eggs</i>	<i>Million Eggs</i>	<i>Million Eggs</i>
Dec ²	7,815	7,784	6,709	6,654	1,106	1,129
Jan	7,675	7,647	6,561	6,508	1,114	1,139
Feb	6,951	7,113	5,943	6,042	1,008	1,071
Mar	7,806	7,673	6,672	6,525	1,134	1,148
Apr ³	7,472	7,381	6,367	6,275	1,105	1,106
May	7,622	7,574	6,475	6,429	1,148	1,145
Jun	7,380		6,268		1,113	
Jul	7,599		6,461		1,138	
Aug	7,594		6,463		1,131	
Sep	7,393		6,296		1,097	
Oct	7,726		6,594		1,132	
Nov	7,542		6,451		1,090	
During Year	90,581		77,266		13,317	

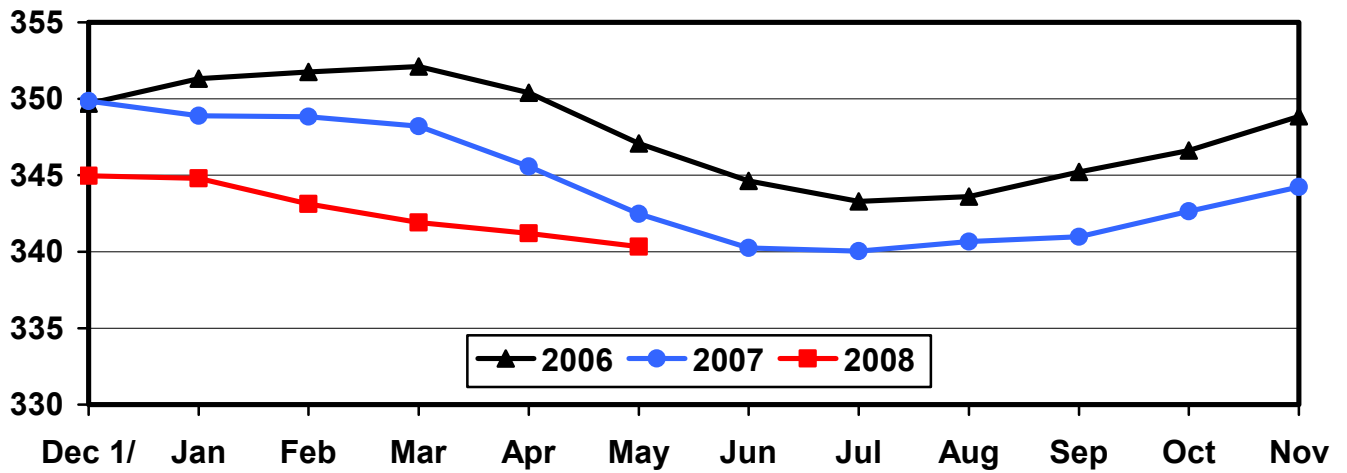
¹ Totals may not add due to rounding.

² December preceding year.

³ Revised 2008 only.

U.S. Average Number of Layers During the Month

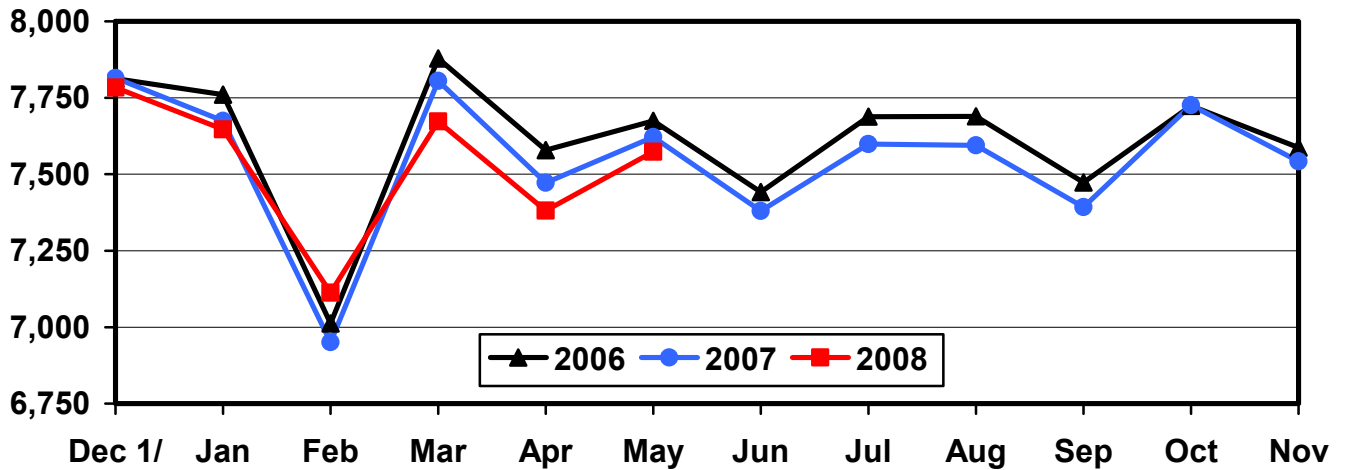
Million Layers



1/ Previous Year

U.S. All Egg Production During the Month

Million Eggs



1/ Previous Year

**Layers and Eggs: Layers on Hand and Eggs Produced by Type,
and Forced Molt, United States, April-May 2007-08¹**

Item	Unit	2007	2008 ²	2008 as % of 2007
Layers During Apr	1,000			
All Layers		345,578	341,203	99
Table Egg Type		285,708	280,867	98
Hatching Egg Type		59,870	60,336	101
Broiler-Type Hatching		57,031	57,494	101
Egg-Type Hatching		2,839	2,842	100
Eggs per 100 Layers During Apr	Number			
All Layers		2,162	2,163	100
Table Egg Type		2,228	2,234	100
Hatching Egg Type		1,846	1,833	99
Broiler-Type Hatching		1,822	1,809	99
Egg-Type Hatching		2,325	2,322	100
Eggs Produced During Apr	Million			
All Layers		7,472	7,381	99
Table Egg Type		6,367	6,275	99
Hatching Egg Type		1,105	1,106	100
Broiler-Type Hatching		1,039	1,040	100
Egg-Type Hatching		66	66	100
Layers on May 1	1,000			
All Layers		343,835	340,683	99
Table Egg Type		283,840	280,145	99
Hatching Egg Type		59,995	60,538	101
Broiler-Type Hatching		57,124	57,704	101
Egg-Type Hatching		2,871	2,834	99
Eggs per 100 Layers on May 1	Number			
All Layers		71.1	71.8	101
Table Egg Type		73.1	74.1	101
Hatching Egg Type		61.5	61.1	99
Broiler-Type Hatching		60.7	60.2	99
Egg-Type Hatching		77.2	78.9	102
Forced Molt Layers on May 1	Percent			
Percent Being Molted		5.4	4.0	74
Percent with Molt Completed		22.2	20.5	92
Layers Sold for Slaughter During Apr	1,000	14,133	14,313	101
Layers Rendered, Died, Destroyed, Composted or Disappeared For Any Reason During Apr	1,000	8,397	7,676	91
Pullets on May 1	1,000	99,951	103,377	103
Pullets Added During Apr ³	1,000	21,219	22,968	108

¹ Totals may not add due to rounding.

² Revised.

³ Pullet chicks less than 3 days old added to pullet flocks.

**Layers and Eggs: Layers on Hand and Eggs Produced by Type,
and Forced Molt, United States, May-June 2007-08 ¹**

Item	Unit	2007	2008	2008 as % of 2007
Layers During May	1,000			
All Layers		342,469	340,319	99
Table Egg Type		282,469	280,133	99
Hatching Egg Type		60,000	60,186	100
Broiler-Type Hatching		57,151	57,368	100
Egg-Type Hatching		2,849	2,818	99
Eggs per 100 Layers During May	Number			
All Layers		2,226	2,226	100
Table Egg Type		2,292	2,295	100
Hatching Egg Type		1,913	1,902	99
Broiler-Type Hatching		1,890	1,877	99
Egg-Type Hatching		2,387	2,413	101
Eggs Produced During May	Million			
All Layers		7,622	7,574	99
Table Egg Type		6,475	6,429	99
Hatching Egg Type		1,148	1,145	100
Broiler-Type Hatching		1,080	1,077	100
Egg-Type Hatching		68	68	100
Layers on Jun 1	1,000			
All Layers		341,057	339,910	100
Table Egg Type		281,072	280,099	100
Hatching Egg Type		59,985	59,811	100
Broiler-Type Hatching		57,166	57,019	100
Egg-Type Hatching		2,819	2,792	99
Eggs per 100 Layers on Jun 1	Number			
All Layers		72.4	71.7	99
Table Egg Type		74.7	73.9	99
Hatching Egg Type		61.7	61.3	99
Broiler-Type Hatching		61.0	60.5	99
Egg-Type Hatching		76.4	78.1	102
Forced Molt Layers on Jun 1	Percent			
Percent Being Molted		3.6	3.5	97
Percent with Molt Completed		24.1	20.7	86
Layers Sold for Slaughter During May	1,000	12,878	13,913	108
Layers Rendered, Died, Destroyed, Composted or Disappeared For Any Reason During May	1,000	8,376	8,612	103
Pullets on Jun 1	1,000	101,489	101,456	100
Pullets Added During May ²	1,000	21,249	20,830	98

¹ Totals may not add due to rounding.

² Pullet chicks less than 3 days old added to pullet flocks.

**Layers and Eggs: Layers on Hand and Eggs Produced by State
and United States, During April 2007-08**

State	Table Egg Layers in Flocks 30,000 and Above		All Layers ¹		Eggs per 100 for All Layers ¹	
	2007	2008 ²	2007	2008 ²	2007	2008 ²
	<i>1,000</i>	<i>1,000</i>	<i>1,000</i>	<i>1,000</i>	<i>Number</i>	<i>Number</i>
AL	1,206	1,256	9,248	9,436	1,881	1,855
AR	4,465	3,586	14,439	13,894	1,925	1,893
CA	18,913	19,615	19,355	19,821	2,118	2,084
CO	3,216	3,380	3,737	3,894	2,328	2,337
CT	2,943	2,846	3,004	2,905	2,330	2,306
FL	9,836	10,012	10,315	10,460	2,220	2,113
GA	9,815	9,106	19,593	18,940	2,042	2,006
HI	368	326	380	351	1,763	1,738
IL	4,508	5,166	4,740	5,393	2,110	2,169
IN	24,225	23,569	24,878	24,280	2,215	2,224
IA	51,534	52,783	52,475	53,727	2,180	2,196
ME	3,913	4,025	3,977	4,094	2,188	2,223
MD	2,336	2,500	2,478	2,646	2,300	2,116
MI	8,826	8,987	9,090	9,199	2,387	2,348
MN	10,146	9,648	10,641	10,142	2,255	2,218
MS	1,597	1,517	6,515	6,250	1,903	1,920
MO	5,732	5,801	6,880	6,911	2,238	2,286
NE	11,033	9,666	11,108	9,741	2,152	2,341
NY	3,619	3,718	3,841	3,941	2,343	2,411
NC	4,182	5,000	12,075	12,700	1,988	2,024
OH	26,705	25,184	27,274	25,790	2,196	2,292
OR	2,402	2,419	2,579	2,604	2,326	2,419
PA	20,892	20,101	22,560	21,510	2,336	2,343
SC	3,532	3,183	4,851	4,491	1,958	2,115
SD	3,048	2,880	3,148	2,905	2,224	2,169
TX	14,196	13,782	18,704	18,820	2,203	2,125
VA	1,383	1,279	3,252	3,182	1,999	1,948
WA	5,481	5,536	5,548	5,605	2,235	2,302
WI	4,468	4,002	5,031	4,586	2,226	2,072
Oth Sts ³	15,665	14,641	23,862	22,985	2,137	2,088
US	280,185	275,514	345,578	341,203	2,162	2,163

¹ Includes all layers and eggs produced in both table egg and hatching egg flocks regardless of size.

² Revised.

³ Not published separately to avoid disclosing data for individual operations.

**Layers and Eggs: Layers on Hand and Eggs Produced by State
and United States, During May 2007-08**

State	Table Egg Layers in Flocks 30,000 and Above		All Layers ¹		Eggs per 100 for All Layers ¹	
	2007	2008	2007	2008	2007	2008
	<i>1,000</i>	<i>1,000</i>	<i>1,000</i>	<i>1,000</i>	<i>Number</i>	<i>Number</i>
AL	1,136	1,273	9,183	9,502	1,906	1,926
AR	4,318	3,651	14,363	14,036	1,991	1,952
CA	18,747	19,906	19,148	20,114	2,152	2,148
CO	3,256	3,193	3,777	3,706	2,356	2,402
CT	2,889	2,796	2,947	2,853	2,307	2,313
FL	9,921	9,938	10,430	10,389	2,272	2,214
GA	9,397	8,931	19,246	18,685	2,058	2,050
HI	355	313	367	336	1,880	1,815
IL	4,641	5,154	4,873	5,381	2,196	2,211
IN	24,164	23,552	24,856	24,251	2,265	2,284
IA	51,092	52,754	52,035	53,681	2,289	2,291
ME	3,835	3,871	3,888	3,947	2,315	2,280
MD	2,413	2,398	2,557	2,536	2,307	2,169
MI	8,561	8,958	8,825	9,167	2,482	2,367
MN	10,171	9,691	10,644	10,192	2,292	2,325
MS	1,534	1,462	6,413	6,257	1,980	1,998
MO	5,834	5,680	6,930	6,818	2,280	2,317
NE	10,943	9,533	11,018	9,608	2,196	2,456
NY	3,554	3,790	3,772	4,005	2,466	2,497
NC	4,285	4,965	12,255	12,587	2,089	2,089
OH	25,594	25,483	26,174	26,092	2,266	2,250
OR	2,354	2,427	2,525	2,611	2,376	2,375
PA	20,656	20,111	22,348	21,525	2,398	2,420
SC	3,506	3,177	4,793	4,485	2,024	2,140
SD	3,016	2,684	3,116	2,709	2,279	2,362
TX	14,008	13,485	18,495	18,413	2,260	2,200
VA	1,373	1,338	3,293	3,237	2,004	2,008
WA	5,561	5,496	5,626	5,564	2,311	2,390
WI	4,446	4,093	5,005	4,670	2,318	2,141
Oth Sts ²	15,386	14,679	23,567	22,962	2,190	2,151
US	276,946	274,782	342,469	340,319	2,226	2,226

¹ Includes all layers and eggs produced in both table egg and hatching egg flocks regardless of size.

² Not published separately to avoid disclosing data for individual operations.

**Egg Production: By Type, State, and United States,
April 2007-08¹**

State	Total Production		Table Eggs ²		Hatching Eggs ²	
	2007	2008 ³	2007	2008 ³	2007	2008 ³
	<i>Million Eggs</i>	<i>Million Eggs</i>	<i>Million Eggs</i>	<i>Million Eggs</i>	<i>Million Eggs</i>	<i>Million Eggs</i>
AL	174	175	27	28	147	147
AR	278	263	102	81	176	182
CA	410	413				
CO	87	91				
CT	70	67				
FL	229	221	219	213	10	8
GA	400	380	218	199	182	181
HI	6.7	6.1	6.7	6.1	0	0
IL	100	117	97	114	3	3
IN	551	540	539	528	12	12
IA	1,144	1,180	1,128	1,164	16	16
ME	87	91				
MD	57	56	55	54	2	2
MI	217	216				
MN	240	225	232	217	8	8
MS	124	120	36	33	88	87
MO	154	158				
NE	239	228	239	228	0	0
NY	90	95				
NC	240	257	101	120	139	137
OH	599	591				
OR	60	63	58	61	2	2
PA	527	504	508	485	19	19
SC	95	95	73	73	22	22
SD	70	63	70	63	0	0
TX	412	400				
VA	65	62	32	28	33	34
WA	124	129				
WI	112	95				
Oth Sts ⁴	510	480	381	352	129	128
US	7,472	7,381	6,367	6,275	1,105	1,106

¹ Totals may not add due to rounding.

² Data by type of flock not shown for some States to avoid disclosing individual operations, data included in US totals.

³ Revised.

⁴ Not published separately to avoid disclosing data for individual operations.

**Egg Production: By Type, State, and United States,
May 2007-08¹**

State	Total Production		Table Eggs ²		Hatching Eggs ²	
	2007	2008	2007	2008	2007	2008
	<i>Million Eggs</i>	<i>Million Eggs</i>	<i>Million Eggs</i>	<i>Million Eggs</i>	<i>Million Eggs</i>	<i>Million Eggs</i>
AL	175	183	25	30	150	153
AR	286	274	102	84	184	190
CA	412	432				
CO	89	89				
CT	68	66				
FL	237	230	227	222	10	8
GA	396	383	206	198	190	185
HI	6.9	6.1	6.9	6.1	0	0
IL	107	119	103	115	4	4
IN	563	554	551	542	12	12
IA	1,191	1,230	1,175	1,214	16	16
ME	90	90				
MD	59	55	57	53	2	2
MI	219	217				
MN	244	237	236	228	8	9
MS	127	125	36	34	91	91
MO	158	158				
NE	242	236	242	236	0	0
NY	93	100				
NC	256	263	108	122	148	141
OH	593	587				
OR	60	62	58	60	2	2
PA	536	521	516	501	20	20
SC	97	96	75	74	22	22
SD	71	64	71	64	0	0
TX	418	405				
VA	66	65	30	30	36	35
WA	130	133				
WI	116	100				
Oth Sts ³	516	494	382	362	134	132
US	7,622	7,574	6,475	6,429	1,148	1,145

¹ Totals may not add due to rounding.

² Data by type of flock not shown for some States to avoid disclosing individual operations, data included in US totals.

³ Not published separately to avoid disclosing data for individual operations.

**Forced Molt: Percent of All Layers by Month,
United States, 2007-08 ¹**

Month	Percent Being Molted		Percent with Molt Completed	
	2007	2008	2007	2008
	<i>Percent</i>	<i>Percent</i>	<i>Percent</i>	<i>Percent</i>
Jan	4.4	2.8	24.5	22.8
Feb	3.4	3.9	24.4	21.7
Mar	2.9	2.0	24.2	22.2
Apr	2.8	2.7	23.5	21.2
May ²	5.4	4.0	22.2	20.5
Jun	3.6	3.5	24.1	20.7
Jul	4.0		24.2	
Aug	3.4		23.6	
Sep	3.5		24.1	
Oct	3.5		23.7	
Nov	2.6		24.0	
Dec	1.8		23.9	

¹ As of first of month.

² Revised 2008 only.

**Forced Molt: Percent of All Layers by State
and United States, June 2007-08 ¹**

State	Percent Being Molted		Percent with Molt Completed	
	2007	2008	2007	2008
	<i>Percent</i>	<i>Percent</i>	<i>Percent</i>	<i>Percent</i>
AL	2.0	1.5	5.5	3.5
AR	2.5	1.0	12.0	9.0
CA	5.0	7.5	32.5	28.0
CO	0.0	1.5	21.5	21.5
CT	0.0	0.0	18.0	11.0
FL	8.5	7.0	28.0	31.0
GA	3.0	2.5	14.0	10.0
HI	8.5	7.5	63.5	64.0
IL	5.5	3.5	32.0	25.5
IN	4.0	3.5	32.5	35.5
IA	3.5	3.0	37.5	32.0
ME	0.0	0.0	0.0	0.0
MD	5.0	4.0	38.5	19.0
MI	2.0	6.0	20.0	18.0
MN	2.5	3.0	25.0	28.5
MS	1.0	1.0	11.0	10.0
MO	6.0	0.5	20.0	18.0
NE	5.0	2.0	17.0	2.0
NY	2.5	1.0	6.0	6.0
NC	0.0	1.0	8.0	8.5
OH	2.0	8.0	23.0	14.0
OR	2.5	6.0	38.5	20.5
PA	2.0	2.0	15.0	11.0
SC	7.5	3.5	24.5	20.5
SD	5.0	6.5	19.5	19.5
TX	5.5	2.0	23.5	24.5
VA	7.0	2.5	15.0	18.5
WA	6.5	4.5	46.0	31.5
WI	7.0	4.5	27.5	29.5
Oth Sts ²	4.6	4.1	25.8	22.1
US	3.6	3.5	24.1	20.7

¹ As of first of month.

² Not published separately to avoid disclosing data for individual operations.

**Hatchery Production: Eggs in Incubators, Chicks Hatched,
and Placements by Type, United States, May-June 2007-08**

Item	2007	2008	2008 as % of 2007
	<i>1,000</i>	<i>1,000</i>	<i>Percent</i>
Egg-Type			
Eggs in Incubators on Jun 1	38,550	37,595	98
Chicks Hatched During May	38,080	42,724	112
Chicks Hatched Jan thru May	188,829	201,038	106
Pullets Hatched During May for Intended Placements in Hatchery Supply Flocks	191	233	122
7-18 Months Earlier ¹	2,889	2,867	99
Broiler-Type			
Eggs in Incubators on Jun 1	680,099	674,213	99
Chicks Hatched During May	835,773	823,718	99
Chicks Hatched Jan thru May	3,962,561	4,047,161	102
Pullets Hatched During May for Intended Placements in Hatchery Supply Flocks	8,083	7,962	99
7-15 Months Earlier ²	64,259	65,522	102

¹ 2008 includes pullet chicks hatched Nov 2006 through Oct 2007.

² 2008 includes pullet chicks hatched Feb 2007 through Oct 2007.

**Egg-Type Eggs in Incubators: By Region and United States,
June 1, 2007-08**

Region ¹	2007	2008	2008 as % of 2007
	<i>1,000</i>	<i>1,000</i>	<i>Percent</i>
North Atlantic	6,027	5,102	85
E North Central	7,061	8,136	115
W North Central	10,001	9,759	98
South Atlantic	5,061	5,121	101
South Central	4,636	4,917	106
West	5,764	4,560	79
US	38,550	37,595	98

¹ Regional listing on page 16.

**Egg-Type Chicks Hatched: By State and United States,
May 2007-08**

State	During May			Jan-May		
	2007	2008	2008 as % of 2007	2007	2008	2008 as % of 2007
	<i>1,000</i>	<i>1,000</i>	<i>Percent</i>	<i>1,000</i>	<i>1,000</i>	<i>Percent</i>
GA	2,265	2,362	104	11,367	11,539	102
IN	5,761	5,420	94	27,739	26,501	96
IA	7,857	7,658	97	37,555	38,089	101
MN	1,065	888	83	4,866	4,129	85
PA	4,499	5,463	121	24,454	25,813	106
Oth Sts ¹	16,633	20,933	126	82,848	94,967	115
US	38,080	42,724	112	188,829	201,038	106

¹ Not published separately to avoid disclosing data for individual operations.

Egg-Type Chicks Hatched: By Month, United States, 2007-08

Month	By Months			Cumulative		
	2007	2008	2008 as % of 2007	2007	2008	2008 as % of 2007
	<i>1,000</i>	<i>1,000</i>	<i>Percent</i>	<i>1,000</i>	<i>1,000</i>	<i>Percent</i>
Jan	36,195	40,167	111	36,195	40,167	111
Feb	36,739	37,549	102	72,934	77,716	107
Mar	38,561	39,547	103	111,495	117,263	105
Apr	39,254	41,051	105	150,749	158,314	105
May	38,080	42,724	112	188,829	201,038	106
Jun	40,641			229,470		
Jul	35,952			265,422		
Aug	36,930			302,352		
Sep	35,327			337,679		
Oct	36,332			374,011		
Nov	36,232			410,243		
Dec	35,866			446,109		

**Intended Placements: Egg-Type Pullet Chicks for Hatchery Supply
Flocks by Month and Total, United States, 2007-08¹**

Month	Pullet Chicks Hatched		2008 as % of 2007	Cumulative Potential Plcmts Relative to Current Supply Flocks 7-18 Months Earlier ²	
	2007	2008		2007	2008
	<i>1,000</i>	<i>1,000</i>	<i>Percent</i>	<i>1,000</i>	<i>1,000</i>
Jan	265	210	79	2,870	3,007
Feb	165	280	170	2,947	2,871
Mar	316	245	78	2,970	2,865
Apr	274	264	96	2,855	2,905
May	191	233	122	2,889	2,867
Jun	300			2,915	2,942
Jul	183			2,873	2,982
Aug	278			2,915	2,927
Sep	300			2,880	3,042
Oct	184			2,935	2,971
Nov	281			2,955	2,961
Dec	245			2,905	3,003
Total	2,982				

¹ Reported by leading breeders. Coverage may not be 100 percent. Includes expected pullet chicks from eggs sold during the preceding month at the rate of 125 pullet chicks per 30 dozen case of eggs.

² For May 2008, includes breeder pullet chicks hatched Nov 2006 through Oct 2007. The 7-18 months represent the first laying cycle. Molting and additional laying cycles will increase the cumulative potential placements.

**Broiler-Type Eggs in Incubators: By Region
and United States, June 1, 2007-08**

Region ¹	2007	2008	2008 as % of 2007
	<i>1,000</i>	<i>1,000</i>	<i>Percent</i>
North Atlantic	12,147	13,493	111
E North Central	11,237	12,094	108
W North Central	30,467	29,922	98
South Atlantic	251,449	244,831	97
South Central	349,327	348,060	100
West	25,472	25,813	101
US	680,099	674,213	99

¹ Regional listing on page 16.

**Broiler-Type Chicks Hatched: By State
and United States, May 2007-08**

State	During May			Jan-May		
	2007	2008	2008 as % of 2007	2007	2008	2008 as % of 2007
	<i>1,000</i>	<i>1,000</i>	<i>Percent</i>	<i>1,000</i>	<i>1,000</i>	<i>Percent</i>
AL	115,972	119,047	103	555,436	578,116	104
AR	106,622	100,720	94	504,110	503,886	100
DE	15,386	14,180	92	72,131	71,662	99
FL	5,108	4,949	97	24,674	24,989	101
GA	129,205	125,611	97	614,776	620,518	101
KY	28,775	28,710	100	136,799	139,290	102
LA	14,523	13,751	95	69,030	69,437	101
MD	32,545	32,681	100	154,596	162,762	105
MS	70,629	70,642	100	339,849	346,148	102
NC	73,185	71,786	98	345,344	355,597	103
OK	26,018	26,202	101	126,061	118,692	94
PA	14,528	15,468	106	69,456	75,512	109
SC	20,299	19,933	98	96,342	98,177	102
TX	56,440	56,330	100	266,673	281,967	106
VA	24,236	22,332	92	113,716	112,774	99
CA, MO, TN, & WV	75,344	73,955	98	358,080	360,304	101
19 Sts ¹	808,815	796,297	98	3,847,073	3,919,831	102
Oth Sts ²	26,958	27,421	102	115,488	127,330	110
US	835,773	823,718	99	3,962,561	4,047,161	102

¹ States in the weekly hatchery production estimating program.

² Not published separately to avoid disclosing data for individual operations.

Broiler-Type Chicks Hatched: By Month, United States, 2007-08

Month	By Months			Cumulative		
	2007	2008	2008 as % of 2007	2007	2008	2008 as % of 2007
	<i>1,000</i>	<i>1,000</i>	<i>Percent</i>	<i>1,000</i>	<i>1,000</i>	<i>Percent</i>
Jan	796,133	821,866	103	796,133	821,866	103
Feb	722,016	771,197	107	1,518,149	1,593,063	105
Mar	809,346	832,899	103	2,327,495	2,425,962	104
Apr	799,293	797,481	100	3,126,788	3,223,443	103
May	835,773	823,718	99	3,962,561	4,047,161	102
Jun	808,329			4,770,890		
Jul	818,983			5,589,873		
Aug	826,599			6,416,472		
Sep	782,152			7,198,624		
Oct	794,846			7,993,470		
Nov	760,033			8,753,503		
Dec	821,281			9,574,784		

**Intended Placements: Broiler-Type Pullet Chicks for Hatchery
Supply Flocks by Month and Total, 2007-08 ¹**

Month	Pullet Chicks Hatched		2008 as % of 2007	Cumulative Potential Plcmts Relative to Current Supply Flocks 7-15 Months Earlier ²	
	2007	2008		2007	2008
	<i>1,000</i>	<i>1,000</i>	<i>Percent</i>	<i>1,000</i>	<i>1,000</i>
US Place- ments					
Jan	7,015	7,012	100	64,544	65,333
Feb	7,071	7,536	107	64,056	65,223
Mar	7,135	7,090	99	64,389	65,397
Apr	6,692	6,867	103	64,340	65,567
May	8,083	7,962	99	64,259	65,522
Jun	7,799			64,284	66,057
Jul	6,634			64,448	66,170
Aug	7,792			64,870	66,490
Sep	7,346			64,410	65,943
Oct	6,970			63,909	65,234
Nov	7,606			64,145	65,467
Dec	7,248			64,597	65,637
Annual Total	87,391				
Total Place- ments ³					
Jan	8,772	8,706	99		
Feb	8,811	9,498	108		
Mar	9,025	9,245	102		
Apr	8,358	8,676	104		
May	9,780	9,778	100		
Jun	9,435				
Jul	8,037				
Aug	9,466				
Sep	8,994				
Oct	9,076				
Nov	9,204				
Dec	9,043				
Annual Total	108,001				

¹ Reported by leading breeders. Coverage may not be 100 percent. Includes expected pullet chicks from eggs sold during the preceding month at the rate of 125 pullet chicks per 30 dozen case of eggs.

² For May 2008, includes breeder pullet chicks hatched Feb 2007 through Oct 2007.

³ U.S. production of intended placements worldwide.

Reliability of Chickens and Eggs Estimates

Survey Procedures: Primary data for the "Chickens and Eggs" report are from weekly and/or monthly questionnaires sent to producers. An attempt is made to collect information for layer and egg estimates from each known contractor and independent producer who has at least 30,000 table egg layers, flocks of hatchery supply layers, or pullet only operations with at least 500 pullets. Coverage for operations with less than 30,000 table egg layers are estimated each month based on data reported in December. Approximately 650 contractors, independent egg producers, and pullet only operations are contacted each month. All known hatcheries, approximately 300, are contacted for information on a weekly and/or monthly basis.

Estimating Procedures: Sound statistical methodology is employed to derive estimates from the reported data. All data are analyzed for unusual values. Data from each operation are compared to their own past operating profile and to trends from similar operations. Data for missing operations are estimated based on similar operations or historical data. NASS field offices prepare these estimates by using a combination of survey indications and historic trends. Individual State estimates are reviewed by the Agricultural Statistics Board for reasonableness. Individual hatchery data are summed to State, regional, and U.S. totals.

For chicken hatcheries, chicks hatched consist of all chicks of domesticated breeds including males and chicks destined for hatchery supply flocks and research purposes. Eggs set are eggs in incubators for the purpose of hatching. The relationship of egg-type chicks hatched to chicken inventory and poultry marketings are carefully monitored. The disposition of egg-type chicks hatched prior to placement into the laying flock can vary significantly, which can make comparisons to changes in layer inventory inconsistent over time. Broiler chicks placed are specifically placed on feed for meat production. Intended placement data reported by leading breeders include pullet chicks expected from eggs sold the preceding month. The breeders in this report account for a large percentage of replacement pullets for hatchery supply flocks. Production of replacement pullets by these breeders indicates the number of pullets available to hatchery supply layer flocks several months before the pullets will actually move into the laying flocks. "Hatchery Supply Flocks" include all generations of layers which could lay eggs to supply a hatchery. This includes the generations of parents, grandparents, great-grandparents, pedigree, etc. Also included are research flocks, vaccine flocks, and specific pathogen-free flocks. The broiler cumulative potential placements are a moving total of the intended placements 7-15 months earlier. The egg-type cumulative potential placements of 7-18 months earlier represent the first laying cycle. Molting and additional laying cycles will increase the cumulative potential placements of egg-type hatching flocks.

Revision Policy: The previous month's estimates are subject to revision if late reports or corrected data indicates a different level. Additionally, revisions after the monthly report will be made at the end of the marketing year and published in the annual reports of "Chickens and Eggs Summary" and "Hatchery Production".

Reliability: Estimates are based on a census of all known contractors and independent producers who have at least 30,000 table egg layers, flocks of hatchery supply layers, pullet only operations with at least 500 pullets, or operating hatcheries and therefore, have no sampling error. However, estimates are subject to errors such as omission, duplication, and mistakes in reporting, recording, and processing the data. While these errors cannot be measured directly, they are minimized through strict quality controls in the data collection process and a careful review of all reported data for consistency and reasonableness.

To assist in evaluating the reliability of the estimates in this report, the "Root Mean Square Error" is shown for selected items in the following table. The "Root Mean Square Error" is a statistical measure based on past performance and is computed using the differences between first and final estimates. The "Root Mean Square Error" for all layers over the past 24 months is 0.8 percent. This means that chances are 2 out of 3 that the final estimate will not be above or below the current estimate of 340 million layers by more than 0.8 percent. Chances are 9 out of 10 that the difference will not exceed 1.5 percent.

Reliability of Layer and Egg Estimates ¹

Item	Root Mean Square Error	90 Percent Confidence Level		Difference Between First and Latest Estimates			Number of Years	
				Average	Smallest	Largest	First Above Latest	First Below Latest
All Layers	<i>Percent</i> 0.8	<i>Percent</i> 1.5	<i>1,000</i> 50	<i>1,000</i> 1,564	<i>1,000</i> 44	<i>1,000</i> 3,157	<i>Number</i> 3	<i>Number</i> 21
Eggs	0.5	0.9	<i>Million Eggs</i> 1	<i>Million Eggs</i> 34	<i>Million Eggs</i> 2	<i>Million Eggs</i> 65	4	20

¹ Based on data for the past 24 months.

Regional Listing

North Atlantic: CT, ME, MA, NH, NJ, NY, PA, RI, VT.
 East North Central: IL, IN, MI, OH, WI.
 West North Central: IA, KS, MN, MO, NE, ND, SD.
 South Atlantic: DE, FL, GA, MD, NC, SC, VA, WV.
 South Central: AL, AR, KY, LA, MS, OK, TN, TX.
 West: AK, AZ, CA, CO, HI, ID, MT, NM, NV, OR, UT, WA, WY.

Information Contacts

Listed below are the commodity specialists in the Livestock Branch of the National Agricultural Statistics Service to contact for additional information.

Dan Kerestes, Chief, Livestock Branch(202) 720-3570

Bruce Boess, Head, Poultry and Specialty Commodities Section.....(202) 720-4447

David Colwell - Cold Storage(202) 720-8784

Fleming Gibson - Poultry Slaughter, Turkey Hatchery, Turkeys Raised.....(202) 690-3237

Sharyn Lavender - Broiler Hatchery, Chicken Hatchery, Honey(202) 720-3244

Kim Linonis - Layers, Eggs(202) 690-8632

Toby Paterson - Catfish Processing, Catfish Production, Trout Production,
 Census of Aquaculture, Egg Products, Mink.....(202) 720-0585

ACCESS TO REPORTS!!

For your convenience, there are several ways to obtain NASS reports, data products, and services:

INTERNET ACCESS

All NASS reports are available free of charge on the worldwide Internet. For access, connect to the Internet and go to the NASS Home Page at www.nass.usda.gov.

E-MAIL SUBSCRIPTION

All NASS reports are available by subscription free of charge direct to your e-mail address. Starting with the NASS Home Page at www.nass.usda.gov, under the right navigation, *Receive reports by Email*, click on **National** or **State**. Follow the instructions on the screen.

PRINTED REPORTS OR DATA PRODUCTS

CALL OUR TOLL-FREE ORDER DESK: 800-999-6779 (U.S. and Canada)
Other areas, please call 703-605-6220 FAX: 703-605-6900
(Visa, MasterCard, check, or money order acceptable for payment.)

ASSISTANCE

For **assistance** with general agricultural statistics or further information about NASS or its products or services, contact the **Agricultural Statistics Hotline** at **800-727-9540**, 7:30 a.m. to 4:00 p.m. ET, or e-mail: nass@nass.usda.gov.

The U.S. Department of Agriculture (USDA) prohibits discrimination in all its programs and activities on the basis of race, color, national origin, age, disability, and where applicable, sex, marital status, familial status, parental status, religion, sexual orientation, genetic information, political beliefs, reprisal, or because all or a part of an individual's income is derived from any public assistance program. (Not all prohibited bases apply to all programs.) Persons with disabilities who require alternative means for communication of program information (Braille, large print, audiotape, etc.) should contact USDA's TARGET Center at (202) 720-2600 (voice and TDD).

To file a complaint of discrimination, write to USDA, Director, Office of Civil Rights, 1400 Independence Avenue, S.W., Washington, D.C. 20250-9410, or call (800) 795-3272 (voice) or (202) 720-6382 (TDD). USDA is an equal opportunity provider and employer.