

# Chickens and Eggs

---

Released July 22, 2008, by the National Agricultural Statistics Service (NASS), Agricultural Statistics Board, U.S. Department of Agriculture. For information on "Layers and Eggs" call Kim Linonis at (202) 690-8632, for "Chicks Hatched" call Sharyn Lavender at (202) 720-3244, office hours 7:30 a.m. to 4:00 p.m. ET.

## **June Egg Production Down Slightly**

U.S. egg production totaled 7.37 billion during June 2008, down slightly from last year. Production included 6.27 billion table eggs, and 1.10 billion hatching eggs, of which 1.03 billion were broiler-type and 64 million were egg-type. The total number of layers during June 2008 averaged 339 million, down slightly from last year. June egg production per 100 layers was 2,176 eggs, up slightly from June 2007.

All layers in the U.S. on July 1, 2008 totaled 337 million, down 1 percent from last year. The 337 million layers consisted of 278 million layers producing table or market type eggs, 56.1 million layers producing broiler-type hatching eggs, and 2.69 million layers producing egg-type hatching eggs. Rate of lay per day on July 1, 2008, averaged 73.3 eggs per 100 layers, up 2 percent from July 1, 2007.

## **Egg-Type Chicks Hatched Up 5 Percent**

Egg-type chicks hatched during June 2008 totaled 42.5 million, up 5 percent from June 2007. Eggs in incubators totaled 35.9 million on July 1, 2008, up 9 percent from a year ago.

Domestic placements of egg-type pullet chicks for future hatchery supply flocks by leading breeders totaled 231 thousand during June 2008, down 23 percent from June 2007.

## **Broiler-Type Chicks Hatched Down Slightly**

Broiler-type chicks hatched during June 2008 totaled 806 million, down slightly from June 2007. Eggs in incubators totaled 658 million on July 1, 2008, down 1 percent from a year earlier.

Leading breeders placed 7.77 million broiler-type pullet chicks for future domestic hatchery supply flocks during June 2008, down slightly from June 2007.



## Contents

	Page
U.S. Average Number of Layers on Hand and Egg Production.....	1
U.S. Layers on Hand and Eggs Produced by Type, Forced Molt, and Pullets .....	3
Layers on Hand and Eggs Produced by State.....	5
Egg Production by Type and State .....	7
Forced Molt .....	9
U.S. Hatchery Production Summary .....	10
Egg-Type Hatchery .....	11
Egg-Type Intended Placements .....	12
Broiler-Type Hatchery .....	12
Broiler-Type Intended Placements .....	14
Reliability of Chickens and Eggs Estimates.....	15
Regional Listing .....	16
Information Contacts.....	16

**All Layers: Average Number on Hand During the Month,  
United States, 2006-08**

Month	2006	2007	2008
	<i>1,000 Layers</i>	<i>1,000 Layers</i>	<i>1,000 Layers</i>
Dec <sup>1</sup>	349,699	349,862	344,965
Jan	351,313	348,897	344,791
Feb	351,754	348,843	343,129
Mar	352,116	348,201	341,906
Apr	350,398	345,578	341,203
May <sup>2</sup>	347,069	342,469	340,259
Jun	344,631	340,237	338,538
Jul	343,285	340,035	
Aug	343,611	340,651	
Sep	345,217	340,984	
Oct	346,608	342,637	
Nov	348,853	344,229	

<sup>1</sup> December preceding year.

<sup>2</sup> Revised 2008 only.

**Eggs: Production During the Month by Type,  
United States, 2007-08 <sup>1</sup>**

Month	Total Eggs		Table Eggs		Hatching Eggs	
	2007	2008	2007	2008	2007	2008
	<i>Million Eggs</i>	<i>Million Eggs</i>	<i>Million Eggs</i>	<i>Million Eggs</i>	<i>Million Eggs</i>	<i>Million Eggs</i>
Dec <sup>2</sup>	7,815	7,784	6,709	6,654	1,106	1,129
Jan	7,675	7,647	6,561	6,508	1,114	1,139
Feb	6,951	7,113	5,943	6,042	1,008	1,071
Mar	7,806	7,673	6,672	6,525	1,134	1,148
Apr	7,472	7,381	6,367	6,275	1,105	1,106
May <sup>3</sup>	7,622	7,571	6,475	6,426	1,148	1,145
Jun	7,380	7,366	6,268	6,270	1,113	1,095
Jul	7,599		6,461		1,138	
Aug	7,594		6,463		1,131	
Sep	7,393		6,296		1,097	
Oct	7,726		6,594		1,132	
Nov	7,542		6,451		1,090	
During Year	90,581		77,266		13,317	

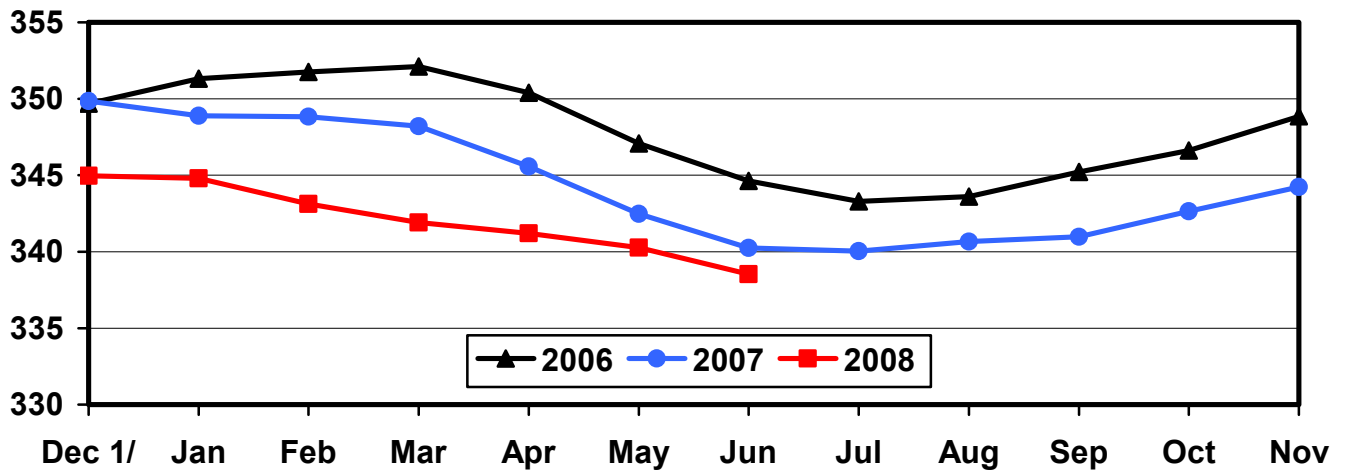
<sup>1</sup> Totals may not add due to rounding.

<sup>2</sup> December preceding year.

<sup>3</sup> Revised 2008 only.

## U.S. Average Number of Layers During the Month

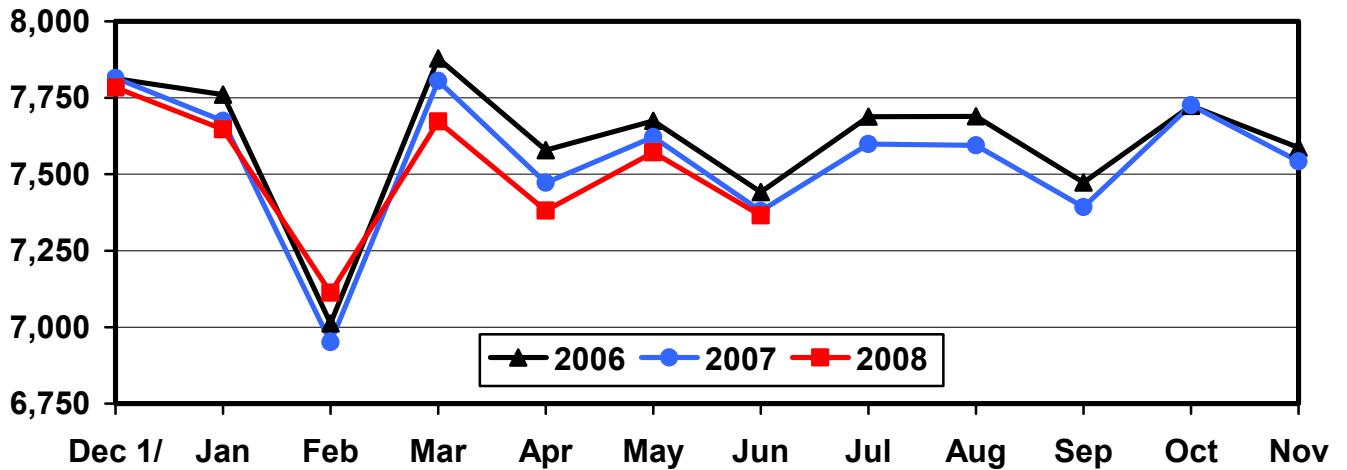
Million Layers



1/ Previous Year

## U.S. All Egg Production During the Month

Million Eggs



1/ Previous Year

**Layers and Eggs: Layers on Hand and Eggs Produced by Type,  
and Forced Molt, United States, May-June 2007-08 <sup>1</sup>**

Item	Unit	2007	2008 <sup>2</sup>	2008 as % of 2007
Layers During May	1,000			
All Layers		342,469	340,259	99
Table Egg Type		282,469	280,057	99
Hatching Egg Type		60,000	60,202	100
Broiler-Type Hatching		57,151	57,386	100
Egg-Type Hatching		2,849	2,816	99
Eggs per 100 Layers During May	Number			
All Layers		2,226	2,225	100
Table Egg Type		2,292	2,295	100
Hatching Egg Type		1,913	1,902	99
Broiler-Type Hatching		1,890	1,877	99
Egg-Type Hatching		2,387	2,415	101
Eggs Produced During May	Million			
All Layers		7,622	7,571	99
Table Egg Type		6,475	6,426	99
Hatching Egg Type		1,148	1,145	100
Broiler-Type Hatching		1,080	1,077	100
Egg-Type Hatching		68	68	100
Layers on Jun 1	1,000			
All Layers		341,057	339,791	100
Table Egg Type		281,072	279,948	100
Hatching Egg Type		59,985	59,843	100
Broiler-Type Hatching		57,166	57,055	100
Egg-Type Hatching		2,819	2,788	99
Eggs per 100 Layers on Jun 1	Number			
All Layers		72.4	71.7	99
Table Egg Type		74.7	73.9	99
Hatching Egg Type		61.7	61.3	99
Broiler-Type Hatching		61.0	60.5	99
Egg-Type Hatching		76.4	78.1	102
Forced Molt Layers on Jun 1	Percent			
Percent Being Molted		3.6	3.6	100
Percent with Molt Completed		24.1	20.7	86
Layers Sold for Slaughter During May	1,000	12,878	14,044	109
Layers Rendered, Died, Destroyed, Composted or Disappeared For Any Reason During May	1,000	8,376	8,622	103
Pullets on Jun 1	1,000	101,489	101,421	100
Pullets Added During May <sup>3</sup>	1,000	21,249	20,838	98

<sup>1</sup> Totals may not add due to rounding.

<sup>2</sup> Revised.

<sup>3</sup> Pullet chicks less than 3 days old added to pullet flocks.

**Layers and Eggs: Layers on Hand and Eggs Produced by Type,  
and Forced Molt, United States, June-July 2007-08 <sup>1</sup>**

Item	Unit	2007	2008	2008 as % of 2007
Layers During Jun	1,000			
All Layers		340,237	338,538	100
Table Egg Type		280,573	279,229	100
Hatching Egg Type		59,664	59,309	99
Broiler-Type Hatching		56,875	56,568	99
Egg-Type Hatching		2,789	2,741	98
Eggs per 100 Layers During Jun	Number			
All Layers		2,169	2,176	100
Table Egg Type		2,234	2,245	100
Hatching Egg Type		1,865	1,846	99
Broiler-Type Hatching		1,843	1,823	99
Egg-Type Hatching		2,331	2,335	100
Eggs Produced During Jun	Million			
All Layers		7,380	7,366	100
Table Egg Type		6,268	6,270	100
Hatching Egg Type		1,113	1,095	98
Broiler-Type Hatching		1,048	1,031	98
Egg-Type Hatching		65	64	98
Layers on Jul 1	1,000			
All Layers		339,373	337,242	99
Table Egg Type		280,054	278,488	99
Hatching Egg Type		59,319	58,754	99
Broiler-Type Hatching		56,572	56,066	99
Egg-Type Hatching		2,747	2,688	98
Eggs per 100 Layers on Jul 1	Number			
All Layers		72.1	73.3	102
Table Egg Type		74.1	75.7	102
Hatching Egg Type		62.2	61.5	99
Broiler-Type Hatching		61.4	60.7	99
Egg-Type Hatching		78.4	77.6	99
Forced Molt Layers on Jul 1	Percent			
Percent Being Molted		4.0	3.2	80
Percent with Molt Completed		24.2	20.6	85
Layers Sold for Slaughter During Jun	1,000	14,432	12,598	87
Layers Rendered, Died, Destroyed, Composted or Disappeared For Any Reason During Jun	1,000	7,274	8,975	123
Pullets on Jul 1	1,000	103,665	101,802	98
Pullets Added During Jun <sup>2</sup>	1,000	23,221	20,392	88

<sup>1</sup> Totals may not add due to rounding.

<sup>2</sup> Pullet chicks less than 3 days old added to pullet flocks.

**Layers and Eggs: Layers on Hand and Eggs Produced by State  
and United States, During May 2007-08**

State	Table Egg Layers in Flocks 30,000 and Above		All Layers <sup>1</sup>		Eggs per 100 for All Layers <sup>1</sup>	
	2007	2008 <sup>2</sup>	2007	2008 <sup>2</sup>	2007	2008 <sup>2</sup>
	<i>1,000</i>	<i>1,000</i>	<i>1,000</i>	<i>1,000</i>	<i>Number</i>	<i>Number</i>
AL	1,136	1,273	9,183	9,520	1,906	1,922
AR	4,318	3,651	14,363	14,036	1,991	1,952
CA	18,747	19,906	19,148	20,114	2,152	2,148
CO	3,256	3,193	3,777	3,706	2,356	2,402
CT	2,889	2,796	2,947	2,853	2,307	2,313
FL	9,921	9,938	10,430	10,389	2,272	2,214
GA	9,397	8,931	19,246	18,685	2,058	2,050
HI	355	313	367	336	1,880	1,815
IL	4,641	5,154	4,873	5,381	2,196	2,211
IN	24,164	23,552	24,856	24,251	2,265	2,284
IA	51,092	52,718	52,035	53,643	2,289	2,291
ME	3,835	3,871	3,888	3,947	2,315	2,280
MD	2,413	2,358	2,557	2,496	2,307	2,163
MI	8,561	8,958	8,825	9,167	2,482	2,367
MN	10,171	9,691	10,644	10,192	2,292	2,325
MS	1,534	1,462	6,413	6,257	1,980	1,998
MO	5,834	5,680	6,930	6,818	2,280	2,317
NE	10,943	9,533	11,018	9,608	2,196	2,456
NY	3,554	3,790	3,772	4,005	2,466	2,497
NC	4,285	4,965	12,255	12,587	2,089	2,089
OH	25,594	25,483	26,174	26,092	2,266	2,250
OR	2,354	2,427	2,525	2,611	2,376	2,375
PA	20,656	20,111	22,348	21,525	2,398	2,420
SC	3,506	3,177	4,793	4,485	2,024	2,140
SD	3,016	2,684	3,116	2,709	2,279	2,362
TX	14,008	13,485	18,495	18,413	2,260	2,200
VA	1,373	1,338	3,293	3,237	2,004	2,008
WA	5,561	5,496	5,626	5,564	2,311	2,390
WI	4,446	4,093	5,005	4,670	2,318	2,141
Oth Sts <sup>3</sup>	15,386	14,679	23,567	22,962	2,190	2,147
US	276,946	274,706	342,469	340,259	2,226	2,225

<sup>1</sup> Includes all layers and eggs produced in both table egg and hatching egg flocks regardless of size.

<sup>2</sup> Revised.

<sup>3</sup> Not published separately to avoid disclosing data for individual operations.



**Layers and Eggs: Layers on Hand and Eggs Produced by State  
and United States, During June 2007-08**

State	Table Egg Layers in Flocks 30,000 and Above		All Layers <sup>1</sup>		Eggs per 100 for All Layers <sup>1</sup>	
	2007	2008	2007	2008	2007	2008
	<i>1,000</i>	<i>1,000</i>	<i>1,000</i>	<i>1,000</i>	<i>Number</i>	<i>Number</i>
AL	1,166	1,220	9,203	9,353	1,847	1,882
AR	4,109	3,600	14,081	13,855	1,917	1,920
CA	18,609	19,827	18,946	20,035	2,101	2,131
CO	3,183	3,172	3,725	3,716	2,362	2,234
CT	2,773	2,722	2,829	2,780	2,262	2,266
FL	9,912	9,824	10,434	10,232	2,214	2,160
GA	9,247	9,046	19,099	18,651	2,005	1,989
HI	354	313	368	335	1,875	1,791
IL	4,705	5,085	4,931	5,312	2,190	2,203
IN	24,140	23,540	24,866	24,230	2,220	2,245
IA	51,258	52,571	52,170	53,485	2,222	2,253
ME	3,761	3,832	3,809	3,908	2,205	2,201
MD	2,384	2,223	2,534	2,366	2,170	2,113
MI	8,552	8,928	8,813	9,139	2,326	2,287
MN	10,077	9,516	10,550	10,006	2,218	2,259
MS	1,559	1,522	6,430	6,348	1,928	1,969
MO	5,774	5,568	6,868	6,709	2,228	2,251
NE	10,818	9,329	10,893	9,404	2,176	2,350
NY	3,590	3,753	3,808	3,960	2,363	2,374
NC	4,245	4,878	12,173	12,465	2,029	1,990
OH	25,118	25,968	25,704	26,579	2,233	2,197
OR	2,202	2,498	2,366	2,667	2,325	2,362
PA	20,659	20,424	22,283	21,829	2,320	2,359
SC	3,478	3,174	4,753	4,470	2,041	2,058
SD	2,986	2,437	3,086	2,462	2,203	2,275
TX	13,938	13,445	18,361	18,241	2,217	2,176
VA	1,315	1,334	3,267	3,138	2,020	1,976
WA	5,483	5,419	5,548	5,484	2,253	2,279
WI	4,397	4,133	4,954	4,691	2,261	2,196
Oth Sts <sup>2</sup>	15,256	14,578	23,385	22,688	2,138	2,116
US	275,048	273,879	340,237	338,538	2,169	2,176

<sup>1</sup> Includes all layers and eggs produced in both table egg and hatching egg flocks regardless of size.

<sup>2</sup> Not published separately to avoid disclosing data for individual operations.

**Egg Production: By Type, State, and United States,  
May 2007-08<sup>1</sup>**

State	Total Production		Table Eggs <sup>2</sup>		Hatching Eggs <sup>2</sup>	
	2007	2008 <sup>3</sup>	2007	2008 <sup>3</sup>	2007	2008
	<i>Million Eggs</i>	<i>Million Eggs</i>	<i>Million Eggs</i>	<i>Million Eggs</i>	<i>Million Eggs</i>	<i>Million Eggs</i>
AL	175	183	25	30	150	153
AR	286	274	102	84	184	190
CA	412	432				
CO	89	89				
CT	68	66				
FL	237	230	227	222	10	8
GA	396	383	206	198	190	185
HI	6.9	6.1	6.9	6.1	0	0
IL	107	119	103	115	4	4
IN	563	554	551	542	12	12
IA	1,191	1,229	1,175	1,213	16	16
ME	90	90				
MD	59	54	57	52	2	2
MI	219	217				
MN	244	237	236	228	8	9
MS	127	125	36	34	91	91
MO	158	158				
NE	242	236	242	236	0	0
NY	93	100				
NC	256	263	108	122	148	141
OH	593	587				
OR	60	62	58	60	2	2
PA	536	521	516	501	20	20
SC	97	96	75	74	22	22
SD	71	64	71	64	0	0
TX	418	405				
VA	66	65	30	30	36	35
WA	130	133				
WI	116	100				
Oth Sts <sup>4</sup>	516	493	382	361	134	132
US	7,622	7,571	6,475	6,426	1,148	1,145

<sup>1</sup> Totals may not add due to rounding.

<sup>2</sup> Data by type of flock not shown for some States to avoid disclosing individual operations, data included in US totals.

<sup>3</sup> Revised.

<sup>4</sup> Not published separately to avoid disclosing data for individual operations.

**Egg Production: By Type, State, and United States,  
June 2007-08 <sup>1</sup>**

State	Total Production		Table Eggs <sup>2</sup>		Hatching Eggs <sup>2</sup>	
	2007	2008	2007	2008	2007	2008
	<i>Million Eggs</i>	<i>Million Eggs</i>	<i>Million Eggs</i>	<i>Million Eggs</i>	<i>Million Eggs</i>	<i>Million Eggs</i>
AL	170	176	25	29	145	147
AR	270	266	92	83	178	183
CA	398	427				
CO	88	83				
CT	64	63				
FL	231	221	221	214	10	7
GA	383	371	199	193	184	178
HI	6.9	6.0	6.9	6.0	0	0
IL	108	117	105	114	3	3
IN	552	544	540	532	12	12
IA	1,159	1,205	1,144	1,191	15	14
ME	84	86				
MD	55	50	53	48	2	2
MI	205	209				
MN	234	226	226	217	8	9
MS	124	125	36	36	88	89
MO	153	151				
NE	237	221	237	221	0	0
NY	90	94				
NC	247	248	103	115	144	133
OH	574	584				
OR	55	63	53	61	2	2
PA	517	515	498	496	19	19
SC	97	92	76	70	21	22
SD	68	56	68	56	0	0
TX	407	397				
VA	66	62	30	30	36	32
WA	125	125				
WI	112	103				
Oth Sts <sup>3</sup>	500	480	369	353	131	126
US	7,380	7,366	6,268	6,270	1,113	1,095

<sup>1</sup> Totals may not add due to rounding.

<sup>2</sup> Data by type of flock not shown for some States to avoid disclosing individual operations, data included in US totals.

<sup>3</sup> Not published separately to avoid disclosing data for individual operations.

**Forced Molt: Percent of All Layers by Month,  
United States, 2007-08 <sup>1</sup>**

Month	Percent Being Molted		Percent with Molt Completed	
	2007	2008	2007	2008
	<i>Percent</i>	<i>Percent</i>	<i>Percent</i>	<i>Percent</i>
Jan	4.4	2.8	24.5	22.8
Feb	3.4	3.9	24.4	21.7
Mar	2.9	2.0	24.2	22.2
Apr	2.8	2.7	23.5	21.2
May	5.4	4.0	22.2	20.5
Jun <sup>2</sup>	3.6	3.6	24.1	20.7
Jul	4.0	3.2	24.2	20.6
Aug	3.4		23.6	
Sep	3.5		24.1	
Oct	3.5		23.7	
Nov	2.6		24.0	
Dec	1.8		23.9	

<sup>1</sup> As of first of month.

<sup>2</sup> Revised 2008 only.

**Forced Molt: Percent of All Layers by State  
and United States, July 2007-08 <sup>1</sup>**

State	Percent Being Molted		Percent with Molt Completed	
	2007	2008	2007	2008
	<i>Percent</i>	<i>Percent</i>	<i>Percent</i>	<i>Percent</i>
AL	1.5	0.5	5.5	4.5
AR	4.5	2.0	12.0	10.0
CA	5.5	8.0	31.5	31.5
CO	0.0	1.5	21.0	20.0
CT	0.0	0.0	11.5	10.5
FL	7.0	4.5	34.0	28.0
GA	4.5	3.5	16.5	10.0
HI	8.0	12.0	59.5	55.0
IL	10.0	3.5	30.5	27.0
IN	4.0	1.5	31.0	35.0
IA	5.0	3.0	37.5	31.0
ME	0.0	0.0	0.0	0.0
MD	11.0	4.0	37.5	12.0
MI	4.0	4.5	16.5	18.5
MN	2.5	4.0	25.0	27.5
MS	2.0	1.5	10.5	10.5
MO	3.5	1.0	21.5	17.5
NE	6.5	3.0	16.5	2.0
NY	4.0	1.0	5.5	5.0
NC	1.5	1.5	8.0	6.5
OH	4.5	4.0	20.0	16.0
OR	13.0	0.0	34.5	25.0
PA	2.0	2.0	16.0	12.0
SC	5.5	2.0	28.5	21.0
SD	5.0	16.0	19.5	16.0
TX	1.5	2.5	25.5	22.5
VA	3.5	0.0	22.0	18.5
WA	4.5	5.5	48.0	30.5
WI	2.5	3.0	33.0	30.0
Oth Sts <sup>2</sup>	2.9	4.2	25.2	21.3
US	4.0	3.2	24.2	20.6

<sup>1</sup> As of first of month.

<sup>2</sup> Not published separately to avoid disclosing data for individual operations.

**Hatchery Production: Eggs in Incubators, Chicks Hatched,  
and Placements by Type, United States, June-July 2007-08**

Item	2007	2008	2008 as % of 2007
	<i>1,000</i>	<i>1,000</i>	<i>Percent</i>
Egg-Type			
Eggs in Incubators on Jul 1	32,904	35,922	109
Chicks Hatched During Jun	40,641	42,538	105
Chicks Hatched Jan thru Jun	229,470	243,576	106
Pullets Hatched During Jun for Intended Placements in Hatchery Supply Flocks	300	231	77
7-18 Months Earlier <sup>1</sup>	2,915	2,942	101
Broiler-Type			
Eggs in Incubators on Jul 1	665,958	657,943	99
Chicks Hatched During Jun	808,329	806,202	100
Chicks Hatched Jan thru Jun	4,770,890	4,853,363	102
Pullets Hatched During Jun for Intended Placements in Hatchery Supply Flocks	7,799	7,772	100
7-15 Months Earlier <sup>2</sup>	64,284	66,057	103

<sup>1</sup> 2008 includes pullet chicks hatched Dec 2006 through Nov 2007.

<sup>2</sup> 2008 includes pullet chicks hatched Mar 2007 through Nov 2007.

**Egg-Type Eggs in Incubators: By Region and United States,  
July 1, 2007-08**

Region <sup>1</sup>	2007	2008	2008 as % of 2007
	<i>1,000</i>	<i>1,000</i>	<i>Percent</i>
North Atlantic	5,928	5,350	90
E North Central	7,088	7,107	100
W North Central	8,216	9,171	112
South Atlantic	4,182	3,942	94
South Central	2,970	5,524	186
West	4,520	4,828	107
US	32,904	35,922	109

<sup>1</sup> Regional listing on page 16.

**Egg-Type Chicks Hatched: By State and United States,  
June 2007-08**

State	During June			Jan-Jun		
	2007	2008	2008 as % of 2007	2007	2008	2008 as % of 2007
	<i>1,000</i>	<i>1,000</i>	<i>Percent</i>	<i>1,000</i>	<i>1,000</i>	<i>Percent</i>
GA	2,163	2,092	97	13,530	13,631	101
IN	4,960	5,831	118	32,699	32,332	99
IA	8,226	8,239	100	45,781	46,328	101
MN	1,161	1,102	95	6,027	5,231	87
PA	4,646	5,087	109	29,100	30,900	106
Oth Sts <sup>1</sup>	19,485	20,187	104	102,333	115,154	113
US	40,641	42,538	105	229,470	243,576	106

<sup>1</sup> Not published separately to avoid disclosing data for individual operations.

**Egg-Type Chicks Hatched: By Month, United States, 2007-08**

Month	By Months			Cumulative		
	2007	2008	2008 as % of 2007	2007	2008	2008 as % of 2007
	<i>1,000</i>	<i>1,000</i>	<i>Percent</i>	<i>1,000</i>	<i>1,000</i>	<i>Percent</i>
Jan	36,195	40,167	111	36,195	40,167	111
Feb	36,739	37,549	102	72,934	77,716	107
Mar	38,561	39,547	103	111,495	117,263	105
Apr	39,254	41,051	105	150,749	158,314	105
May	38,080	42,724	112	188,829	201,038	106
Jun	40,641	42,538	105	229,470	243,576	106
Jul	35,952			265,422		
Aug	36,930			302,352		
Sep	35,327			337,679		
Oct	36,332			374,011		
Nov	36,232			410,243		
Dec	35,866			446,109		

**Intended Placements: Egg-Type Pullet Chicks for Hatchery Supply  
Flocks by Month and Total, United States, 2007-08<sup>1</sup>**

Month	Pullet Chicks Hatched		2008 as % of 2007	Cumulative Potential Plcmts Relative to Current Supply Flocks 7-18 Months Earlier <sup>2</sup>	
	2007	2008		2008	2009
	<i>1,000</i>	<i>1,000</i>	<i>Percent</i>	<i>1,000</i>	<i>1,000</i>
Jan	265	210	79	3,007	2,928
Feb	165	280	170	2,871	
Mar	316	245	78	2,865	
Apr	274	264	96	2,905	
May <sup>3</sup>	191	227	119	2,867	
Jun	300	231	77	2,942	
Jul	183			2,982	
Aug	278			2,927	
Sep	300			3,042	
Oct	184			2,971	
Nov	281			2,961	
Dec	245			2,997	
Total	2,982				

<sup>1</sup> Reported by leading breeders. Coverage may not be 100 percent. Includes expected pullet chicks from eggs sold during the preceding month at the rate of 125 pullet chicks per 30 dozen case of eggs.

<sup>2</sup> For June 2008, includes breeder pullet chicks hatched Dec 2006 through Nov 2007. The 7-18 months represent the first laying cycle. Molting and additional laying cycles will increase the cumulative potential placements.

<sup>3</sup> Revision to 2008 pullet chicks hatched and cumulative potential placements for December 2008.

**Broiler-Type Eggs in Incubators: By Region  
and United States, July 1, 2007-08**

Region <sup>1</sup>	2007	2008	2008 as % of 2007
	<i>1,000</i>	<i>1,000</i>	<i>Percent</i>
North Atlantic	12,360	13,533	109
E North Central	11,335	12,842	113
W North Central	29,198	28,929	99
South Atlantic	246,454	240,748	98
South Central	341,467	336,656	99
West	25,144	25,235	100
US	665,958	657,943	99

<sup>1</sup> Regional listing on page 16.

**Broiler-Type Chicks Hatched: By State  
and United States, June 2007-08**

State	During June			Jan-Jun		
	2007	2008	2008 as % of 2007	2007	2008	2008 as % of 2007
	<i>1,000</i>	<i>1,000</i>	<i>Percent</i>	<i>1,000</i>	<i>1,000</i>	<i>Percent</i>
AL	112,284	116,961	104	667,720	695,077	104
AR	103,828	98,033	94	607,938	601,919	99
DE	15,002	13,458	90	87,133	85,120	98
FL	4,834	4,832	100	29,508	29,821	101
GA	125,317	122,423	98	740,093	742,941	100
KY	28,039	29,008	103	164,838	168,298	102
LA	14,146	13,425	95	83,176	82,862	100
MD	31,596	31,527	100	186,192	194,289	104
MS	68,823	69,187	101	408,672	415,335	102
NC	70,701	69,216	98	416,045	424,813	102
OK	25,271	25,728	102	151,332	144,420	95
PA	14,026	15,565	111	83,482	91,077	109
SC	19,906	19,739	99	116,248	117,916	101
TX	55,483	56,565	102	322,156	338,532	105
VA	23,305	22,766	98	137,021	135,540	99
CA, MO, TN, & WV	72,058	72,259	100	430,138	432,563	101
19 Sts <sup>1</sup>	784,619	780,692	99	4,631,692	4,700,523	101
Oth Sts <sup>2</sup>	23,710	25,510	108	139,198	152,840	110
US	808,329	806,202	100	4,770,890	4,853,363	102

<sup>1</sup> States in the weekly hatchery production estimating program.

<sup>2</sup> Not published separately to avoid disclosing data for individual operations.

**Broiler-Type Chicks Hatched: By Month, United States, 2007-08**

Month	By Months			Cumulative		
	2007	2008	2008 as % of 2007	2007	2008	2008 as % of 2007
	<i>1,000</i>	<i>1,000</i>	<i>Percent</i>	<i>1,000</i>	<i>1,000</i>	<i>Percent</i>
Jan	796,133	821,866	103	796,133	821,866	103
Feb	722,016	771,197	107	1,518,149	1,593,063	105
Mar	809,346	832,899	103	2,327,495	2,425,962	104
Apr	799,293	797,481	100	3,126,788	3,223,443	103
May	835,773	823,718	99	3,962,561	4,047,161	102
Jun	808,329	806,202	100	4,770,890	4,853,363	102
Jul	818,983			5,589,873		
Aug	826,599			6,416,472		
Sep	782,152			7,198,624		
Oct	794,846			7,993,470		
Nov	760,033			8,753,503		
Dec	821,281			9,574,784		



**Intended Placements: Broiler-Type Pullet Chicks for Hatchery  
Supply Flocks by Month and Total, 2007-08 <sup>1</sup>**

Month	Pullet Chicks Hatched		2008 as % of 2007	Cumulative Potential Plcmts Relative to Current Supply Flocks 7-15 Months Earlier <sup>2</sup>	
	2007	2008		2008	2009
	<i>1,000</i>	<i>1,000</i>	<i>Percent</i>	<i>1,000</i>	<i>1,000</i>
US Place- ments					
Jan	7,015	7,012	100	65,333	66,318
Feb	7,071	7,536	107	65,223	
Mar	7,135	7,090	99	65,397	
Apr	6,692	6,867	103	65,567	
May <sup>3</sup>	8,083	8,217	102	65,522	
Jun	7,799	7,772	100	66,057	
Jul	6,634			66,170	
Aug	7,792			66,490	
Sep	7,346			65,943	
Oct	6,970			65,234	
Nov	7,606			65,467	
Dec	7,248			65,892	
Annual Total	87,391				
Total Place- ments <sup>4</sup>					
Jan	8,772	8,706	99		
Feb	8,811	9,498	108		
Mar	9,025	9,245	102		
Apr	8,358	8,676	104		
May <sup>5</sup>	9,780	10,089	103		
Jun	9,435	9,602	102		
Jul	8,037				
Aug	9,466				
Sep	8,994				
Oct	9,076				
Nov	9,204				
Dec	9,043				
Annual Total	108,001				

<sup>1</sup> Reported by leading breeders. Coverage may not be 100 percent. Includes expected pullet chicks from eggs sold during the preceding month at the rate of 125 pullet chicks per 30 dozen case of eggs.

<sup>2</sup> For Jun 2008, includes breeder pullet chicks hatched Mar 2007 through Nov 2007.

<sup>3</sup> Revised 2008 pullet chicks hatched and cumulative placements for December 2008.

<sup>4</sup> U.S. production of intended placements worldwide.

<sup>5</sup> Revised 2008 only.

## Reliability of Chickens and Eggs Estimates

**Survey Procedures:** Primary data for the "Chickens and Eggs" report are from weekly and/or monthly questionnaires sent to producers. An attempt is made to collect information for layer and egg estimates from each known contractor and independent producer who has at least 30,000 table egg layers, flocks of hatchery supply layers, or pullet only operations with at least 500 pullets. Coverage for operations with less than 30,000 table egg layers are estimated each month based on data reported in December. Approximately 650 contractors, independent egg producers, and pullet only operations are contacted each month. All known hatcheries, approximately 300, are contacted for information on a weekly and/or monthly basis.

**Estimating Procedures:** Sound statistical methodology is employed to derive estimates from the reported data. All data are analyzed for unusual values. Data from each operation are compared to their own past operating profile and to trends from similar operations. Data for missing operations are estimated based on similar operations or historical data. NASS field offices prepare these estimates by using a combination of survey indications and historic trends. Individual State estimates are reviewed by the Agricultural Statistics Board for reasonableness. Individual hatchery data are summed to State, regional, and U.S. totals.

For chicken hatcheries, chicks hatched consist of all chicks of domesticated breeds including males and chicks destined for hatchery supply flocks and research purposes. Eggs set are eggs in incubators for the purpose of hatching. The relationship of egg-type chicks hatched to chicken inventory and poultry marketings are carefully monitored. The disposition of egg-type chicks hatched prior to placement into the laying flock can vary significantly, which can make comparisons to changes in layer inventory inconsistent over time. Broiler chicks placed are specifically placed on feed for meat production. Intended placement data reported by leading breeders include pullet chicks expected from eggs sold the preceding month. The breeders in this report account for a large percentage of replacement pullets for hatchery supply flocks. Production of replacement pullets by these breeders indicates the number of pullets available to hatchery supply layer flocks several months before the pullets will actually move into the laying flocks. "Hatchery Supply Flocks" include all generations of layers which could lay eggs to supply a hatchery. This includes the generations of parents, grandparents, great-grandparents, pedigree, etc. Also included are research flocks, vaccine flocks, and specific pathogen-free flocks. The broiler cumulative potential placements are a moving total of the intended placements 7-15 months earlier. The egg-type cumulative potential placements of 7-18 months earlier represent the first laying cycle. Molting and additional laying cycles will increase the cumulative potential placements of egg-type hatching flocks.

**Revision Policy:** The previous month's estimates are subject to revision if late reports or corrected data indicates a different level. Additionally, revisions after the monthly report will be made at the end of the marketing year and published in the annual reports of "Chickens and Eggs Summary" and "Hatchery Production".

**Reliability:** Estimates are based on a census of all known contractors and independent producers who have at least 30,000 table egg layers, flocks of hatchery supply layers, pullet only operations with at least 500 pullets, or operating hatcheries and therefore, have no sampling error. However, estimates are subject to errors such as omission, duplication, and mistakes in reporting, recording, and processing the data. While these errors cannot be measured directly, they are minimized through strict quality controls in the data collection process and a careful review of all reported data for consistency and reasonableness.

To assist in evaluating the reliability of the estimates in this report, the "Root Mean Square Error" is shown for selected items in the following table. The "Root Mean Square Error" is a statistical measure based on past performance and is computed using the differences between first and final estimates. The "Root Mean Square Error" for all layers over the past 24 months is 0.8 percent. This means that chances are 2 out of 3 that the final estimate will not be above or below the current estimate of 339 million layers by more than 0.8 percent. Chances are 9 out of 10 that the difference will not exceed 1.4 percent.

**Reliability of Layer and Egg Estimates <sup>1</sup>**

Item	Root Mean Square Error	90 Percent Confidence Level		Difference Between First and Latest Estimates			Number of Years	
				Average	Smallest	Largest	First Above Latest	First Below Latest
All Layers	<i>Percent</i> 0.8	<i>Percent</i> 1.4	<i>1,000</i> 48	<i>1,000</i> 1,469	<i>1,000</i> 44	<i>1,000</i> 3,157	<i>Number</i> 4	<i>Number</i> 20
Eggs	0.5	0.9	<i>Million Eggs</i> 1	<i>Million Eggs</i> 32	<i>Million Eggs</i> 2	<i>Million Eggs</i> 65	5	19

<sup>1</sup> Based on data for the past 24 months.

**Regional Listing**

North Atlantic: CT, ME, MA, NH, NJ, NY, PA, RI, VT.  
 East North Central: IL, IN, MI, OH, WI.  
 West North Central: IA, KS, MN, MO, NE, ND, SD.  
 South Atlantic: DE, FL, GA, MD, NC, SC, VA, WV.  
 South Central: AL, AR, KY, LA, MS, OK, TN, TX.  
 West: AK, AZ, CA, CO, HI, ID, MT, NM, NV, OR, UT, WA, WY.

**Information Contacts**

Listed below are the commodity specialists in the Livestock Branch of the National Agricultural Statistics Service to contact for additional information.

Dan Kerestes, Chief, Livestock Branch .....(202) 720-3570

Bruce Boess, Head, Poultry and Specialty Commodities Section.....(202) 720-4447

David Colwell - Cold Storage .....(202) 720-8784

Fleming Gibson - Poultry Slaughter, Turkey Hatchery, Turkeys Raised.....(202) 690-3237

Sharyn Lavender - Broiler Hatchery, Chicken Hatchery, Honey .....(202) 720-3244

Kim Linonis - Layers, Eggs .....(202) 690-8632

Toby Paterson - Catfish Processing, Catfish Production, Trout Production,  
 Census of Aquaculture, Egg Products, Mink.....(202) 720-0585

## ACCESS TO REPORTS!!

---

For your convenience, there are several ways to obtain NASS reports, data products, and services:

### INTERNET ACCESS

All NASS reports are available free of charge on the worldwide Internet. For access, connect to the Internet and go to the NASS Home Page at [www.nass.usda.gov](http://www.nass.usda.gov).

### E-MAIL SUBSCRIPTION

All NASS reports are available by subscription free of charge direct to your e-mail address. Starting with the NASS Home Page at [www.nass.usda.gov](http://www.nass.usda.gov), under the right navigation, *Receive reports by Email*, click on **National** or **State**. Follow the instructions on the screen.

-----

### PRINTED REPORTS OR DATA PRODUCTS

**CALL OUR TOLL-FREE ORDER DESK: 800-999-6779 (U.S. and Canada)**  
**Other areas, please call 703-605-6220      FAX: 703-605-6900**  
**(Visa, MasterCard, check, or money order acceptable for payment.)**

-----

### ASSISTANCE

For **assistance** with general agricultural statistics or further information about NASS or its products or services, contact the **Agricultural Statistics Hotline** at **800-727-9540**, 7:30 a.m. to 4:00 p.m. ET, or e-mail: [nass@nass.usda.gov](mailto:nass@nass.usda.gov).

The U.S. Department of Agriculture (USDA) prohibits discrimination in all its programs and activities on the basis of race, color, national origin, age, disability, and where applicable, sex, marital status, familial status, parental status, religion, sexual orientation, genetic information, political beliefs, reprisal, or because all or a part of an individual's income is derived from any public assistance program. (Not all prohibited bases apply to all programs.) Persons with disabilities who require alternative means for communication of program information (Braille, large print, audiotape, etc.) should contact USDA's TARGET Center at (202) 720-2600 (voice and TDD).

To file a complaint of discrimination, write to USDA, Director, Office of Civil Rights, 1400 Independence Avenue, S.W., Washington, D.C. 20250-9410, or call (800) 795-3272 (voice) or (202) 720-6382 (TDD). USDA is an equal opportunity provider and employer.