

Chickens and Eggs

Released August 22, 2008, by the National Agricultural Statistics Service (NASS), Agricultural Statistics Board, U.S. Department of Agriculture. For information on "Layers and Eggs" call Kim Linonis at (202) 690-8632, for "Chicks Hatched" call Sharyn Lavender at (202) 720-3244, office hours 7:30 a.m. to 4:00 p.m. ET.

July Egg Production Up Slightly

U.S. egg production totaled 7.60 billion during July 2008, up slightly from last year. Production included 6.49 billion table eggs, and 1.12 billion hatching eggs, of which 1.05 billion were broiler-type and 64 million were egg-type. The total number of layers during July 2008 averaged 336 million, down 1 percent from last year. July egg production per 100 layers was 2,262 eggs, up 1 percent from July 2007.

All layers in the U.S. on August 1, 2008 totaled 335 million, down 2 percent from last year. The 335 million layers consisted of 277 million layers producing table or market type eggs, 55.2 million layers producing broiler-type hatching eggs, and 2.69 million layers producing egg-type hatching eggs. Rate of lay per day on August 1, 2008, averaged 72.5 eggs per 100 layers, up 1 percent from August 1, 2007.

Egg-Type Chicks Hatched Up 5 Percent

Egg-type chicks hatched during July 2008 totaled 37.9 million, up 5 percent from July 2007. Eggs in incubators totaled 33.0 million on August 1, 2008, up 2 percent from a year ago.

Domestic placements of egg-type pullet chicks for future hatchery supply flocks by leading breeders totaled 244 thousand during July 2008, up 33 percent from July 2007.

Broiler-Type Chicks Hatched Down 2 Percent

Broiler-type chicks hatched during July 2008 totaled 807 million, down 2 percent from July 2007. Eggs in incubators totaled 651 million on August 1, 2008, down 3 percent from a year earlier.

Leading breeders placed 7.07 million broiler-type pullet chicks for future domestic hatchery supply flocks during July 2008, up 6 percent from July 2007.

Contents

	Page
U.S. Average Number of Layers on Hand and Egg Production.....	1
U.S. Layers on Hand and Eggs Produced by Type, Forced Molt, and Pullets	3
Layers on Hand and Eggs Produced by State.....	5
Egg Production by Type and State	7
Forced Molt	9
U.S. Hatchery Production Summary	10
Egg-Type Hatchery	11
Egg-Type Intended Placements	12
Broiler-Type Hatchery	12
Broiler-Type Intended Placements	14
Reliability of Chickens and Eggs Estimates.....	15
Regional Listing	16
Information Contacts.....	16

**All Layers: Average Number on Hand During the Month,
United States, 2006-08**

Month	2006	2007	2008
	<i>1,000 Layers</i>	<i>1,000 Layers</i>	<i>1,000 Layers</i>
Dec ¹	349,699	349,862	344,965
Jan	351,313	348,897	344,791
Feb	351,754	348,843	343,129
Mar	352,116	348,201	341,906
Apr	350,398	345,578	341,203
May	347,069	342,469	340,259
Jun ²	344,631	340,237	338,612
Jul	343,285	340,035	336,101
Aug	343,611	340,651	
Sep	345,217	340,984	
Oct	346,608	342,637	
Nov	348,853	344,229	

¹ December preceding year.

² Revised 2008 only.

**Eggs: Production During the Month by Type,
United States, 2007-08 ¹**

Month	Total Eggs		Table Eggs		Hatching Eggs	
	2007	2008	2007	2008	2007	2008
	<i>Million Eggs</i>	<i>Million Eggs</i>	<i>Million Eggs</i>	<i>Million Eggs</i>	<i>Million Eggs</i>	<i>Million Eggs</i>
Dec ²	7,815	7,784	6,709	6,654	1,106	1,129
Jan	7,675	7,647	6,561	6,508	1,114	1,139
Feb	6,951	7,113	5,943	6,042	1,008	1,071
Mar	7,806	7,673	6,672	6,525	1,134	1,148
Apr	7,472	7,381	6,367	6,275	1,105	1,106
May	7,622	7,571	6,475	6,426	1,148	1,145
Jun ³	7,380	7,370	6,268	6,275	1,113	1,094
Jul	7,599	7,601	6,461	6,486	1,138	1,115
Aug	7,594		6,463		1,131	
Sep	7,393		6,296		1,097	
Oct	7,726		6,594		1,132	
Nov	7,542		6,451		1,090	
During Year	90,581		77,266		13,317	

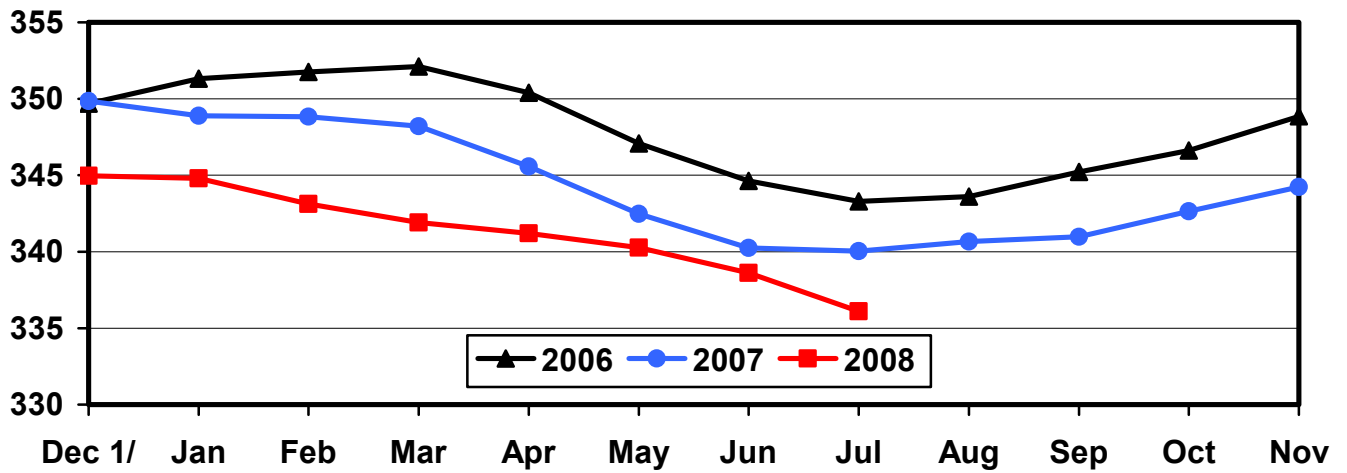
¹ Totals may not add due to rounding.

² December preceding year.

³ Revised 2008 only.

U.S. Average Number of Layers During the Month

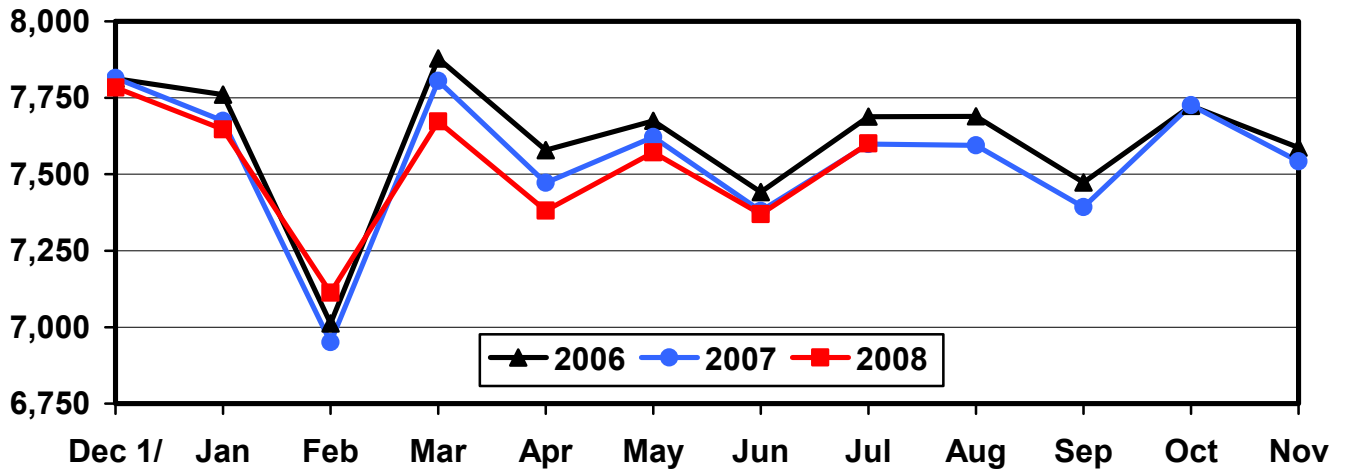
Million Layers



1/ Previous Year

U.S. All Egg Production During the Month

Million Eggs



1/ Previous Year

**Layers and Eggs: Layers on Hand and Eggs Produced by Type,
and Forced Molt, United States, June-July 2007-08 ¹**

Item	Unit	2007	2008 ²	2008 as % of 2007
Layers During Jun	1,000			
All Layers		340,237	338,612	100
Table Egg Type		280,573	279,344	100
Hatching Egg Type		59,664	59,268	99
Broiler-Type Hatching		56,875	56,527	99
Egg-Type Hatching		2,789	2,741	98
Eggs per 100 Layers During Jun	Number			
All Layers		2,169	2,177	100
Table Egg Type		2,234	2,246	101
Hatching Egg Type		1,865	1,846	99
Broiler-Type Hatching		1,843	1,822	99
Egg-Type Hatching		2,331	2,335	100
Eggs Produced During Jun	Million			
All Layers		7,380	7,370	100
Table Egg Type		6,268	6,275	100
Hatching Egg Type		1,113	1,094	98
Broiler-Type Hatching		1,048	1,030	98
Egg-Type Hatching		65	64	98
Layers on Jul 1	1,000			
All Layers		339,373	337,390	99
Table Egg Type		280,054	278,718	100
Hatching Egg Type		59,319	58,672	99
Broiler-Type Hatching		56,572	55,984	99
Egg-Type Hatching		2,747	2,688	98
Eggs per 100 Layers on Jul 1	Number			
All Layers		72.1	73.3	102
Table Egg Type		74.1	75.8	102
Hatching Egg Type		62.2	61.5	99
Broiler-Type Hatching		61.4	60.7	99
Egg-Type Hatching		78.4	77.6	99
Forced Molt Layers on Jul 1	Percent			
Percent Being Molted		4.0	3.3	83
Percent with Molt Completed		24.2	20.9	86
Layers Sold for Slaughter During Jun	1,000	14,432	12,560	87
Layers Rendered, Died, Destroyed, Composted or Disappeared For Any Reason During Jun	1,000	7,274	8,971	123
Pullets on Jul 1	1,000	103,665	101,988	98
Pullets Added During Jun ³	1,000	23,221	20,990	90

¹ Totals may not add due to rounding.

² Revised.

³ Pullet chicks less than 3 days old added to pullet flocks.

**Layers and Eggs: Layers on Hand and Eggs Produced by Type,
and Forced Molt, United States, July-August 2007-08 ¹**

Item	Unit	2007	2008	2008 as % of 2007
Layers During Jul	1,000			
All Layers		340,035	336,101	99
Table Egg Type		280,880	277,820	99
Hatching Egg Type		59,155	58,281	99
Broiler-Type Hatching		56,415	55,590	99
Egg-Type Hatching		2,740	2,691	98
Eggs per 100 Layers During Jul	Number			
All Layers		2,235	2,262	101
Table Egg Type		2,300	2,335	102
Hatching Egg Type		1,924	1,913	99
Broiler-Type Hatching		1,900	1,891	100
Egg-Type Hatching		2,409	2,378	99
Eggs Produced During Jul	Million			
All Layers		7,599	7,601	100
Table Egg Type		6,461	6,486	100
Hatching Egg Type		1,138	1,115	98
Broiler-Type Hatching		1,072	1,051	98
Egg-Type Hatching		66	64	97
Layers on Aug 1	1,000			
All Layers		340,648	334,769	98
Table Egg Type		281,680	276,899	98
Hatching Egg Type		58,968	57,870	98
Broiler-Type Hatching		56,246	55,184	98
Egg-Type Hatching		2,722	2,686	99
Eggs per 100 Layers on Aug 1	Number			
All Layers		72.1	72.5	101
Table Egg Type		74.2	74.8	101
Hatching Egg Type		61.9	61.5	99
Broiler-Type Hatching		61.1	60.8	100
Egg-Type Hatching		77.1	75.7	98
Forced Molt Layers on Aug 1	Percent			
Percent Being Molted		3.4	3.6	106
Percent with Molt Completed		23.6	21.1	89
Layers Sold for Slaughter During Jul	1,000	12,793	13,460	105
Layers Rendered, Died, Destroyed, Composted or Disappeared For Any Reason During Jul	1,000	7,678	8,486	111
Pullets on Aug 1	1,000	102,058	102,446	100
Pullets Added During Jul ²	1,000	20,940	20,950	100

¹ Totals may not add due to rounding.

² Pullet chicks less than 3 days old added to pullet flocks.

**Layers and Eggs: Layers on Hand and Eggs Produced by State
and United States, During June 2007-08**

State	Table Egg Layers in Flocks 30,000 and Above		All Layers ¹		Eggs per 100 for All Layers ¹	
	2007	2008 ²	2007	2008 ²	2007	2008 ²
	<i>1,000</i>	<i>1,000</i>	<i>1,000</i>	<i>1,000</i>	<i>Number</i>	<i>Number</i>
AL	1,166	1,220	9,203	9,312	1,847	1,879
AR	4,109	3,600	14,081	13,855	1,917	1,920
CA	18,609	19,827	18,946	20,035	2,101	2,131
CO	3,183	3,172	3,725	3,716	2,362	2,234
CT	2,773	2,722	2,829	2,780	2,262	2,266
FL	9,912	9,824	10,434	10,232	2,214	2,160
GA	9,247	9,046	19,099	18,651	2,005	1,989
HI	354	313	368	335	1,875	1,791
IL	4,705	5,085	4,931	5,312	2,190	2,203
IN	24,140	23,540	24,866	24,230	2,220	2,245
IA	51,258	52,518	52,170	53,432	2,222	2,253
ME	3,761	3,832	3,809	3,908	2,205	2,201
MD	2,384	2,223	2,534	2,366	2,170	2,113
MI	8,552	9,096	8,813	9,307	2,326	2,299
MN	10,077	9,516	10,550	10,006	2,218	2,259
MS	1,559	1,522	6,430	6,348	1,928	1,969
MO	5,774	5,568	6,868	6,709	2,228	2,251
NE	10,818	9,329	10,893	9,404	2,176	2,350
NY	3,590	3,753	3,808	3,960	2,363	2,374
NC	4,245	4,878	12,173	12,465	2,029	1,990
OH	25,118	25,968	25,704	26,579	2,233	2,197
OR	2,202	2,498	2,366	2,667	2,325	2,362
PA	20,659	20,424	22,283	21,829	2,320	2,359
SC	3,478	3,174	4,753	4,470	2,041	2,058
SD	2,986	2,437	3,086	2,462	2,203	2,275
TX	13,938	13,445	18,361	18,241	2,217	2,176
VA	1,315	1,334	3,267	3,138	2,020	1,976
WA	5,483	5,419	5,548	5,484	2,253	2,279
WI	4,397	4,133	4,954	4,691	2,261	2,196
Oth Sts ³	15,256	14,578	23,385	22,688	2,138	2,120
US	275,048	273,994	340,237	338,612	2,169	2,177

¹ Includes all layers and eggs produced in both table egg and hatching egg flocks regardless of size.

² Revised.

³ Not published separately to avoid disclosing data for individual operations.

**Layers and Eggs: Layers on Hand and Eggs Produced by State
and United States, During July 2007-08**

State	Table Egg Layers in Flocks 30,000 and Above		All Layers ¹		Eggs per 100 for All Layers ¹	
	2007	2008	2007	2008	2007	2008
	<i>1,000</i>	<i>1,000</i>	<i>1,000</i>	<i>1,000</i>	<i>Number</i>	<i>Number</i>
AL	1,194	1,255	9,153	9,213	1,945	1,932
AR	4,041	3,613	13,838	13,488	1,973	2,002
CA	18,562	19,566	18,869	19,778	2,157	2,210
CO	3,144	3,305	3,685	3,817	2,469	2,436
CT	2,646	2,632	2,702	2,691	2,443	2,453
FL	10,040	9,591	10,564	9,974	2,310	2,206
GA	9,387	9,086	19,121	18,493	2,061	2,066
HI	353	311	369	333	1,897	1,892
IL	4,719	5,154	4,945	5,381	2,285	2,286
IN	23,952	23,193	24,639	23,896	2,281	2,327
IA	51,969	52,401	52,878	53,325	2,275	2,323
ME	3,742	3,801	3,807	3,873	2,285	2,169
MD	2,440	2,312	2,593	2,459	2,275	2,277
MI	8,686	9,169	8,941	9,381	2,371	2,420
MN	10,044	9,341	10,521	9,811	2,262	2,334
MS	1,564	1,537	6,457	6,298	2,013	2,064
MO	5,600	5,317	6,717	6,432	2,263	2,394
NE	10,748	9,368	10,823	9,443	2,347	2,414
NY	3,692	3,635	3,910	3,846	2,455	2,470
NC	4,359	4,723	12,137	12,253	2,060	2,065
OH	25,253	25,986	25,815	26,586	2,270	2,340
OR	2,240	2,512	2,414	2,682	2,361	2,573
PA	20,254	20,447	21,884	21,865	2,417	2,424
SC	3,357	2,945	4,644	4,225	2,132	2,272
SD	3,043	2,407	3,143	2,432	2,259	2,220
TX	13,999	13,511	18,502	18,296	2,259	2,235
VA	1,316	1,338	3,196	3,073	2,065	2,050
WA	5,385	5,361	5,450	5,425	2,330	2,304
WI	4,216	4,076	4,774	4,635	2,409	2,352
Oth Sts ²	15,408	14,577	23,544	22,697	2,187	2,194
US	275,353	272,470	340,035	336,101	2,235	2,262

¹ Includes all layers and eggs produced in both table egg and hatching egg flocks regardless of size.

² Not published separately to avoid disclosing data for individual operations.

**Egg Production: By Type, State, and United States,
June 2007-08 ¹**

State	Total Production		Table Eggs ²		Hatching Eggs ²	
	2007	2008 ³	2007	2008 ³	2007	2008 ³
	<i>Million Eggs</i>	<i>Million Eggs</i>	<i>Million Eggs</i>	<i>Million Eggs</i>	<i>Million Eggs</i>	<i>Million Eggs</i>
AL	170	175	25	29	145	146
AR	270	266	92	83	178	183
CA	398	427				
CO	88	83				
CT	64	63				
FL	231	221	221	214	10	7
GA	383	371	199	193	184	178
HI	6.9	6.0	6.9	6.0	0	0
IL	108	117	105	114	3	3
IN	552	544	540	532	12	12
IA	1,159	1,204	1,144	1,190	15	14
ME	84	86				
MD	55	50	53	48	2	2
MI	205	214				
MN	234	226	226	217	8	9
MS	124	125	36	36	88	89
MO	153	151				
NE	237	221	237	221	0	0
NY	90	94				
NC	247	248	103	115	144	133
OH	574	584				
OR	55	63	53	61	2	2
PA	517	515	498	496	19	19
SC	97	92	76	70	21	22
SD	68	56	68	56	0	0
TX	407	397				
VA	66	62	30	30	36	32
WA	125	125				
WI	112	103				
Oth Sts ⁴	500	481	369	354	131	126
US	7,380	7,370	6,268	6,275	1,113	1,094

¹ Totals may not add due to rounding.

² Data by type of flock not shown for some States to avoid disclosing individual operations, data included in US totals.

³ Revised.

⁴ Not published separately to avoid disclosing data for individual operations.

**Egg Production: By Type, State, and United States,
July 2007-08 ¹**

State	Total Production		Table Eggs ²		Hatching Eggs ²	
	2007	2008	2007	2008	2007	2008
	<i>Million Eggs</i>	<i>Million Eggs</i>	<i>Million Eggs</i>	<i>Million Eggs</i>	<i>Million Eggs</i>	<i>Million Eggs</i>
AL	178	178	28	30	150	148
AR	273	270	93	86	180	184
CA	407	437				
CO	91	93				
CT	66	66				
FL	244	220	234	214	10	6
GA	394	382	206	200	188	182
HI	7.0	6.3	7.0	6.3	0	0
IL	113	123	109	119	4	4
IN	562	556	550	544	12	12
IA	1,203	1,239	1,188	1,224	15	15
ME	87	84				
MD	59	56	57	54	2	2
MI	212	227				
MN	238	229	229	220	9	9
MS	130	130	38	38	92	92
MO	152	154				
NE	254	228	254	228	0	0
NY	96	95				
NC	250	253	105	119	145	134
OH	586	622				
OR	57	69	55	67	2	2
PA	529	530	510	510	19	20
SC	99	96	77	73	22	23
SD	71	54	71	54	0	0
TX	418	409				
VA	66	63	30	31	36	32
WA	127	125				
WI	115	109				
Oth Sts ³	515	498	383	368	132	130
US	7,599	7,601	6,461	6,486	1,138	1,115

¹ Totals may not add due to rounding.

² Data by type of flock not shown for some States to avoid disclosing individual operations, data included in US totals.

³ Not published separately to avoid disclosing data for individual operations.

**Forced Molt: Percent of All Layers by Month,
United States, 2007-08 ¹**

Month	Percent Being Molted		Percent with Molt Completed	
	2007	2008	2007	2008
	<i>Percent</i>	<i>Percent</i>	<i>Percent</i>	<i>Percent</i>
Jan	4.4	2.8	24.5	22.8
Feb	3.4	3.9	24.4	21.7
Mar	2.9	2.0	24.2	22.2
Apr	2.8	2.7	23.5	21.2
May	5.4	4.0	22.2	20.5
Jun	3.6	3.6	24.1	20.7
Jul ²	4.0	3.3	24.2	20.9
Aug	3.4	3.6	23.6	21.1
Sep	3.5		24.1	
Oct	3.5		23.7	
Nov	2.6		24.0	
Dec	1.8		23.9	

¹ As of first of month.

² Revised 2008 only.

**Forced Molt: Percent of All Layers by State
and United States, August 2007-08 ¹**

State	Percent Being Molted		Percent with Molt Completed	
	2007	2008	2007	2008
	<i>Percent</i>	<i>Percent</i>	<i>Percent</i>	<i>Percent</i>
AL	0.5	1.5	5.5	3.5
AR	0.0	1.0	13.5	10.0
CA	5.5	3.5	30.0	32.0
CO	1.5	1.5	15.0	19.5
CT	0.0	0.0	11.0	10.0
FL	6.5	7.5	33.0	31.0
GA	1.5	4.0	17.0	10.0
HI	8.5	11.0	60.5	56.0
IL	6.0	11.0	36.5	26.5
IN	7.0	6.0	29.5	32.5
IA	3.5	3.5	36.0	32.5
ME	0.0	0.0	0.0	0.0
MD	2.5	0.0	41.0	13.5
MI	4.0	4.0	21.0	19.0
MN	2.5	3.5	25.0	29.5
MS	1.0	1.5	9.5	10.5
MO	3.5	1.0	17.5	15.0
NE	2.5	2.0	20.5	3.0
NY	2.5	1.0	7.0	6.0
NC	2.0	0.0	9.5	8.5
OH	4.0	2.5	18.5	19.0
OR	8.5	6.0	33.5	22.0
PA	1.5	6.0	12.5	11.5
SC	4.5	2.5	25.5	20.0
SD	5.0	11.0	19.0	29.0
TX	5.0	5.5	24.0	21.5
VA	3.0	0.0	19.5	18.5
WA	5.5	5.5	45.0	27.0
WI	2.0	2.5	36.0	32.5
Oth Sts ²	2.9	3.2	24.6	22.3
US	3.4	3.6	23.6	21.1

¹ As of first of month.

² Not published separately to avoid disclosing data for individual operations.

**Hatchery Production: Eggs in Incubators, Chicks Hatched,
and Placements by Type, United States, July-August 2007-08**

Item	2007	2008	2008 as % of 2007
	<i>1,000</i>	<i>1,000</i>	<i>Percent</i>
Egg-Type			
Eggs in Incubators on Aug 1	32,441	33,040	102
Chicks Hatched During Jul	35,952	37,929	105
Chicks Hatched Jan thru Jul	265,422	281,505	106
Pullets Hatched During Jul for Intended Placements in Hatchery Supply Flocks 7-18 Months Earlier ¹	183	244	133
	2,873	2,982	104
Broiler-Type			
Eggs in Incubators on Aug 1	674,016	650,798	97
Chicks Hatched During Jul	818,983	806,555	98
Chicks Hatched Jan thru Jul	5,589,873	5,659,918	101
Pullets Hatched During Jul for Intended Placements in Hatchery Supply Flocks 7-15 Months Earlier ²	6,634	7,065	106
	64,448	66,170	103

¹ 2008 includes pullet chicks hatched Jan 2007 through Dec 2007.

² 2008 includes pullet chicks hatched Apr 2007 through Dec 2007.

**Egg-Type Eggs in Incubators: By Region and United States,
August 1, 2007-08**

Region ¹	2007	2008	2008 as % of 2007
	<i>1,000</i>	<i>1,000</i>	<i>Percent</i>
North Atlantic	4,755	4,381	92
E North Central	6,522	6,643	102
W North Central	8,349	8,355	100
South Atlantic	3,881	2,999	77
South Central	4,245	5,665	133
West	4,689	4,997	107
US	32,441	33,040	102

¹ Regional listing on page 16.

**Egg-Type Chicks Hatched: By State and United States,
July 2007-08**

State	During July			Jan-Jul		
	2007	2008	2008 as % of 2007	2007	2008	2008 as % of 2007
	<i>1,000</i>	<i>1,000</i>	<i>Percent</i>	<i>1,000</i>	<i>1,000</i>	<i>Percent</i>
GA	2,164	1,825	84	15,694	15,456	98
IN	5,275	4,922	93	37,974	37,254	98
IA	7,286	7,931	109	53,067	54,259	102
MN	1,094	1,127	103	7,121	6,358	89
PA	4,040	4,892	121	33,140	35,792	108
Oth Sts ¹	16,093	17,232	107	118,426	132,386	112
US	35,952	37,929	105	265,422	281,505	106

¹ Not published separately to avoid disclosing data for individual operations.

Egg-Type Chicks Hatched: By Month, United States, 2007-08

Month	By Months			Cumulative		
	2007	2008	2008 as % of 2007	2007	2008	2008 as % of 2007
	<i>1,000</i>	<i>1,000</i>	<i>Percent</i>	<i>1,000</i>	<i>1,000</i>	<i>Percent</i>
Jan	36,195	40,167	111	36,195	40,167	111
Feb	36,739	37,549	102	72,934	77,716	107
Mar	38,561	39,547	103	111,495	117,263	105
Apr	39,254	41,051	105	150,749	158,314	105
May	38,080	42,724	112	188,829	201,038	106
Jun	40,641	42,538	105	229,470	243,576	106
Jul	35,952	37,929	105	265,422	281,505	106
Aug	36,930			302,352		
Sep	35,327			337,679		
Oct	36,332			374,011		
Nov	36,232			410,243		
Dec	35,866			446,109		

**Intended Placements: Egg-Type Pullet Chicks for Hatchery Supply
Flocks by Month and Total, United States, 2007-08¹**

Month	Pullet Chicks Hatched		2008 as % of 2007	Cumulative Potential Plcmts Relative to Current Supply Flocks 7-18 Months Earlier ²	
	2007	2008		2008	2009
	<i>1,000</i>	<i>1,000</i>	<i>Percent</i>	<i>1,000</i>	<i>1,000</i>
Jan	265	210	79	3,007	2,928
Feb	165	280	170	2,871	2,989
Mar	316	245	78	2,865	
Apr	274	264	96	2,905	
May ³	191	227	119	2,867	
Jun	300	231	77	2,942	
Jul	183	244	133	2,982	
Aug	278			2,927	
Sep	300			3,042	
Oct	184			2,971	
Nov	281			2,961	
Dec	245			2,997	
Total	2,982				

¹ Reported by leading breeders. Coverage may not be 100 percent. Includes expected pullet chicks from eggs sold during the preceding month at the rate of 125 pullet chicks per 30 dozen case of eggs.

² For July 2008, includes breeder pullet chicks hatched Jan 2007 through Dec 2007. The 7-18 months represent the first laying cycle. Molting and additional laying cycles will increase the cumulative potential placements.

³ Revision to 2008 pullet chicks hatched and cumulative potential placements for January 2009.

**Broiler-Type Eggs in Incubators: By Region
and United States, August 1, 2007-08**

Region ¹	2007	2008	2008 as % of 2007
	<i>1,000</i>	<i>1,000</i>	<i>Percent</i>
North Atlantic	12,135	13,403	110
E North Central	11,977	12,191	102
W North Central	29,557	29,594	100
South Atlantic	248,901	239,229	96
South Central	347,085	333,810	96
West	24,361	22,571	93
US	674,016	650,798	97

¹ Regional listing on page 16.

**Broiler-Type Chicks Hatched: By State
and United States, July 2007-08**

State	During July			Jan-Jul		
	2007	2008	2008 as % of 2007	2007	2008	2008 as % of 2007
	<i>1,000</i>	<i>1,000</i>	<i>Percent</i>	<i>1,000</i>	<i>1,000</i>	<i>Percent</i>
AL	115,396	114,172	99	783,116	809,249	103
AR	103,993	97,655	94	711,931	699,574	98
DE	15,728	13,178	84	102,861	98,298	96
FL	5,029	5,095	101	34,537	34,916	101
GA	127,616	123,297	97	867,709	866,238	100
KY	27,947	28,395	102	192,785	196,693	102
LA	14,479	13,798	95	97,655	96,660	99
MD	32,038	31,902	100	218,230	226,191	104
MS	70,283	70,011	100	478,955	485,346	101
NC	71,976	69,616	97	488,021	494,429	101
OK	24,934	25,110	101	176,266	169,530	96
PA	14,267	15,935	112	97,749	107,012	109
SC	19,694	19,459	99	135,942	137,375	101
TX	56,251	57,974	103	378,407	396,506	105
VA	23,662	23,095	98	160,683	158,635	99
CA, MO, TN, & WV	71,806	72,969	102	501,944	505,532	101
19 Sts ¹	795,099	781,661	98	5,426,791	5,482,184	101
Oth Sts ²	23,884	24,894	104	163,082	177,734	109
US	818,983	806,555	98	5,589,873	5,659,918	101

¹ States in the weekly hatchery production estimating program.

² Not published separately to avoid disclosing data for individual operations.

Broiler-Type Chicks Hatched: By Month, United States, 2007-08

Month	By Months			Cumulative		
	2007	2008	2008 as % of 2007	2007	2008	2008 as % of 2007
	<i>1,000</i>	<i>1,000</i>	<i>Percent</i>	<i>1,000</i>	<i>1,000</i>	<i>Percent</i>
Jan	796,133	821,866	103	796,133	821,866	103
Feb	722,016	771,197	107	1,518,149	1,593,063	105
Mar	809,346	832,899	103	2,327,495	2,425,962	104
Apr	799,293	797,481	100	3,126,788	3,223,443	103
May	835,773	823,718	99	3,962,561	4,047,161	102
Jun	808,329	806,202	100	4,770,890	4,853,363	102
Jul	818,983	806,555	98	5,589,873	5,659,918	101
Aug	826,599			6,416,472		
Sep	782,152			7,198,624		
Oct	794,846			7,993,470		
Nov	760,033			8,753,503		
Dec	821,281			9,574,784		

**Intended Placements: Broiler-Type Pullet Chicks for Hatchery
Supply Flocks by Month and Total, 2007-08 ¹**

Month	Pullet Chicks Hatched		2008 as % of 2007	Cumulative Potential Plcmts Relative to Current Supply Flocks 7-15 Months Earlier ²	
	2007	2008		2008	2009
	<i>1,000</i>	<i>1,000</i>	<i>Percent</i>	<i>1,000</i>	<i>1,000</i>
US Place- ments					
Jan	7,015	7,012	100	65,333	66,073
Feb	7,071	7,536	107	65,223	66,168
Mar	7,135	7,090	99	65,397	
Apr	6,692	6,867	103	65,567	
May ³	8,083	8,217	102	65,522	
Jun	7,799	7,527	97	66,057	
Jul	6,634	7,065	106	66,170	
Aug	7,792			66,490	
Sep	7,346			65,943	
Oct	6,970			65,234	
Nov	7,606			65,467	
Dec	7,248			65,892	
Annual Total	87,391				
Total Place- ments ⁴					
Jan	8,772	8,706	99		
Feb	8,811	9,498	108		
Mar	9,025	9,245	102		
Apr	8,358	8,676	104		
May ⁵	9,780	10,089	103		
Jun	9,435	9,339	99		
Jul	8,037	8,633	107		
Aug	9,466				
Sep	8,994				
Oct	9,076				
Nov	9,204				
Dec	9,043				
Annual Total	108,001				

¹ Reported by leading breeders. Coverage may not be 100 percent. Includes expected pullet chicks from eggs sold during the preceding month at the rate of 125 pullet chicks per 30 dozen case of eggs.

² For Jul 2008, includes breeder pullet chicks hatched Apr 2007 through Dec 2007.

³ Revised 2008 pullet chicks hatched and cumulative placements for January 2009.

⁴ U.S. production of intended placements worldwide.

⁵ Revised 2008 only.

Reliability of Chickens and Eggs Estimates

Survey Procedures: Primary data for the "Chickens and Eggs" report are from weekly and/or monthly questionnaires sent to producers. An attempt is made to collect information for layer and egg estimates from each known contractor and independent producer who has at least 30,000 table egg layers, flocks of hatchery supply layers, or pullet only operations with at least 500 pullets. Coverage for operations with less than 30,000 table egg layers are estimated each month based on data reported in December. Approximately 650 contractors, independent egg producers, and pullet only operations are contacted each month. All known hatcheries, approximately 300, are contacted for information on a weekly and/or monthly basis.

Estimating Procedures: Sound statistical methodology is employed to derive estimates from the reported data. All data are analyzed for unusual values. Data from each operation are compared to their own past operating profile and to trends from similar operations. Data for missing operations are estimated based on similar operations or historical data. NASS field offices prepare these estimates by using a combination of survey indications and historic trends. Individual State estimates are reviewed by the Agricultural Statistics Board for reasonableness. Individual hatchery data are summed to State, regional, and U.S. totals.

For chicken hatcheries, chicks hatched consist of all chicks of domesticated breeds including males and chicks destined for hatchery supply flocks and research purposes. Eggs set are eggs in incubators for the purpose of hatching. The relationship of egg-type chicks hatched to chicken inventory and poultry marketings are carefully monitored. The disposition of egg-type chicks hatched prior to placement into the laying flock can vary significantly, which can make comparisons to changes in layer inventory inconsistent over time. Broiler chicks placed are specifically placed on feed for meat production. Intended placement data reported by leading breeders include pullet chicks expected from eggs sold the preceding month. The breeders in this report account for a large percentage of replacement pullets for hatchery supply flocks. Production of replacement pullets by these breeders indicates the number of pullets available to hatchery supply layer flocks several months before the pullets will actually move into the laying flocks. "Hatchery Supply Flocks" include all generations of layers which could lay eggs to supply a hatchery. This includes the generations of parents, grandparents, great-grandparents, pedigree, etc. Also included are research flocks, vaccine flocks, and specific pathogen-free flocks. The broiler cumulative potential placements are a moving total of the intended placements 7-15 months earlier. The egg-type cumulative potential placements of 7-18 months earlier represent the first laying cycle. Molting and additional laying cycles will increase the cumulative potential placements of egg-type hatching flocks.

Revision Policy: The previous month's estimates are subject to revision if late reports or corrected data indicates a different level. Additionally, revisions after the monthly report will be made at the end of the marketing year and published in the annual reports of "Chickens and Eggs Summary" and "Hatchery Production".

Reliability: Estimates are based on a census of all known contractors and independent producers who have at least 30,000 table egg layers, flocks of hatchery supply layers, pullet only operations with at least 500 pullets, or operating hatcheries and therefore, have no sampling error. However, estimates are subject to errors such as omission, duplication, and mistakes in reporting, recording, and processing the data. While these errors cannot be measured directly, they are minimized through strict quality controls in the data collection process and a careful review of all reported data for consistency and reasonableness.

To assist in evaluating the reliability of the estimates in this report, the "Root Mean Square Error" is shown for selected items in the following table. The "Root Mean Square Error" is a statistical measure based on past performance and is computed using the differences between first and final estimates. The "Root Mean Square Error" for all layers over the past 24 months is 0.7 percent. This means that chances are 2 out of 3 that the final estimate will not be above or below the current estimate of 336 million layers by more than 0.7 percent. Chances are 9 out of 10 that the difference will not exceed 1.3 percent.

Reliability of Layer and Egg Estimates ¹

Item	Root Mean Square Error	90 Percent Confidence Level		Difference Between First and Latest Estimates			Number of Months	
				Average	Smallest	Largest	First Above Latest	First Below Latest
All Layers	<i>Percent</i> 0.7	<i>Percent</i> 1.3	<i>1,000</i> 45	<i>1,000</i> 1,358	<i>1,000</i> 44	<i>1,000</i> 3,157	<i>Number</i> 4	<i>Number</i> 20
Eggs	0.5	0.8	<i>Million Eggs</i> 1	<i>Million Eggs</i> 30	<i>Million Eggs</i> 2	<i>Million Eggs</i> 65	5	19

¹ Based on data for the past 24 months.

Regional Listing

North Atlantic: CT, ME, MA, NH, NJ, NY, PA, RI, VT.
 East North Central: IL, IN, MI, OH, WI.
 West North Central: IA, KS, MN, MO, NE, ND, SD.
 South Atlantic: DE, FL, GA, MD, NC, SC, VA, WV.
 South Central: AL, AR, KY, LA, MS, OK, TN, TX.
 West: AK, AZ, CA, CO, HI, ID, MT, NM, NV, OR, UT, WA, WY.

Information Contacts

Listed below are the commodity specialists in the Livestock Branch of the National Agricultural Statistics Service to contact for additional information.

Dan Kerestes, Chief, Livestock Branch(202) 720-3570

Bruce Boess, Head, Poultry and Specialty Commodities Section.....(202) 720-4447

David Colwell - Cold Storage(202) 720-8784

Fleming Gibson - Poultry Slaughter, Turkey Hatchery, Turkeys Raised.....(202) 690-3237

Sharyn Lavender - Broiler Hatchery, Chicken Hatchery, Honey(202) 720-3244

Kim Linonis - Layers, Eggs(202) 690-8632

Toby Paterson - Catfish Processing, Catfish Production, Trout Production,
 Census of Aquaculture, Egg Products, Mink.....(202) 720-0585

ACCESS TO REPORTS!!

For your convenience, there are several ways to obtain NASS reports, data products, and services:

INTERNET ACCESS

All NASS reports are available free of charge on the worldwide Internet. For access, connect to the Internet and go to the NASS Home Page at www.nass.usda.gov.

E-MAIL SUBSCRIPTION

All NASS reports are available by subscription free of charge direct to your e-mail address. Starting with the NASS Home Page at www.nass.usda.gov, under the right navigation, *Receive reports by Email*, click on **National** or **State**. Follow the instructions on the screen.

PRINTED REPORTS OR DATA PRODUCTS

CALL OUR TOLL-FREE ORDER DESK: 800-999-6779 (U.S. and Canada)
Other areas, please call 703-605-6220 FAX: 703-605-6900
(Visa, MasterCard, check, or money order acceptable for payment.)

ASSISTANCE

For **assistance** with general agricultural statistics or further information about NASS or its products or services, contact the **Agricultural Statistics Hotline** at **800-727-9540**, 7:30 a.m. to 4:00 p.m. ET, or e-mail: nass@nass.usda.gov.

The U.S. Department of Agriculture (USDA) prohibits discrimination in all its programs and activities on the basis of race, color, national origin, age, disability, and where applicable, sex, marital status, familial status, parental status, religion, sexual orientation, genetic information, political beliefs, reprisal, or because all or a part of an individual's income is derived from any public assistance program. (Not all prohibited bases apply to all programs.) Persons with disabilities who require alternative means for communication of program information (Braille, large print, audiotape, etc.) should contact USDA's TARGET Center at (202) 720-2600 (voice and TDD).

To file a complaint of discrimination, write to USDA, Director, Office of Civil Rights, 1400 Independence Avenue, S.W., Washington, D.C. 20250-9410, or call (800) 795-3272 (voice) or (202) 720-6382 (TDD). USDA is an equal opportunity provider and employer.