

Chickens and Eggs

Released September 22, 2008, by the National Agricultural Statistics Service (NASS), Agricultural Statistics Board, U.S. Department of Agriculture. For information on "Layers and Eggs" call Kim Linonis at (202) 690-8632, for "Chicks Hatched" call Sharyn Lavender at (202) 720-3244, office hours 7:30 a.m. to 4:00 p.m. ET.

August Egg Production Down 1 Percent

U.S. egg production totaled 7.55 billion during August 2008, down 1 percent from last year. Production included 6.45 billion table eggs, and 1.10 billion hatching eggs, of which 1.04 billion were broiler-type and 65 million were egg-type. The total number of layers during August 2008 averaged 335 million, down 2 percent from last year. August egg production per 100 layers was 2,252 eggs, up 1 percent from August 2007.

All layers in the U.S. on September 1, 2008 totaled 335 million, down 2 percent from last year. The 335 million layers consisted of 278 million layers producing table or market type eggs, 54.3 million layers producing broiler-type hatching eggs, and 2.73 million layers producing egg-type hatching eggs. Rate of lay per day on September 1, 2008, averaged 72.8 eggs per 100 layers, up 2 percent from September 1, 2007.

Egg-Type Chicks Hatched Down 2 Percent

Egg-type chicks hatched during August 2008 totaled 36.3 million, down 2 percent from August 2007. Eggs in incubators totaled 36.3 million on September 1, 2008, up 4 percent from a year ago.

Domestic placements of egg-type pullet chicks for future hatchery supply flocks by leading breeders totaled 279 thousand during August 2008, up slightly from August 2007.

Broiler-Type Chicks Hatched Down 3 Percent

Broiler-type chicks hatched during August 2008 totaled 800 million, down 3 percent from August 2007. Eggs in incubators totaled 639 million on September 1, 2008, down 5 percent from a year earlier.

Leading breeders placed 8.03 million broiler-type pullet chicks for future domestic hatchery supply flocks during August 2008, up 3 percent from August 2007.

Contents

	Page
U.S. Average Number of Layers on Hand and Egg Production.....	1
U.S. Layers on Hand and Eggs Produced by Type, Forced Molt, and Pullets	3
Layers on Hand and Eggs Produced by State.....	5
Egg Production by Type and State	7
Forced Molt	9
U.S. Hatchery Production Summary	10
Egg-Type Hatchery	11
Egg-Type Intended Placements	12
Broiler-Type Hatchery	12
Broiler-Type Intended Placements	14
Reliability of Chickens and Eggs Estimates.....	15
Regional Listing	16
Information Contacts.....	16

**All Layers: Average Number on Hand During the Month,
United States, 2006-08**

Month	2006	2007	2008
	<i>1,000 Layers</i>	<i>1,000 Layers</i>	<i>1,000 Layers</i>
Dec ¹	349,699	349,862	344,965
Jan	351,313	348,897	344,791
Feb	351,754	348,843	343,129
Mar	352,116	348,201	341,906
Apr	350,398	345,578	341,203
May	347,069	342,469	340,259
Jun	344,631	340,237	338,612
Jul ²	343,285	340,035	336,191
Aug	343,611	340,651	335,060
Sep	345,217	340,984	
Oct	346,608	342,637	
Nov	348,853	344,229	

¹ December preceding year.

² Revised 2008 only.

**Eggs: Production During the Month by Type,
United States, 2007-08 ¹**

Month	Total Eggs		Table Eggs		Hatching Eggs	
	2007	2008	2007	2008	2007	2008
	<i>Million Eggs</i>	<i>Million Eggs</i>	<i>Million Eggs</i>	<i>Million Eggs</i>	<i>Million Eggs</i>	<i>Million Eggs</i>
Dec ²	7,815	7,784	6,709	6,654	1,106	1,129
Jan	7,675	7,647	6,561	6,508	1,114	1,139
Feb	6,951	7,113	5,943	6,042	1,008	1,071
Mar	7,806	7,673	6,672	6,525	1,134	1,148
Apr	7,472	7,381	6,367	6,275	1,105	1,106
May	7,622	7,571	6,475	6,426	1,148	1,145
Jun	7,380	7,370	6,268	6,275	1,113	1,094
Jul ³	7,599	7,599	6,461	6,484	1,138	1,115
Aug	7,594	7,547	6,463	6,445	1,131	1,102
Sep	7,393		6,296		1,097	
Oct	7,726		6,594		1,132	
Nov	7,542		6,451		1,090	
During Year	90,581		77,266		13,317	

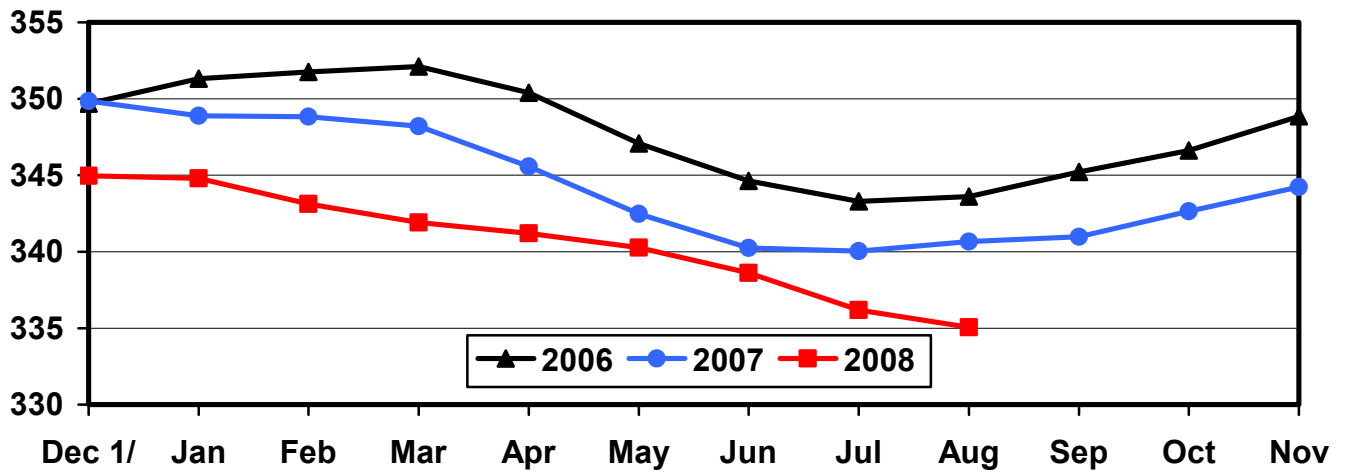
¹ Totals may not add due to rounding.

² December preceding year.

³ Revised 2008 only.

U.S. Average Number of Layers During the Month

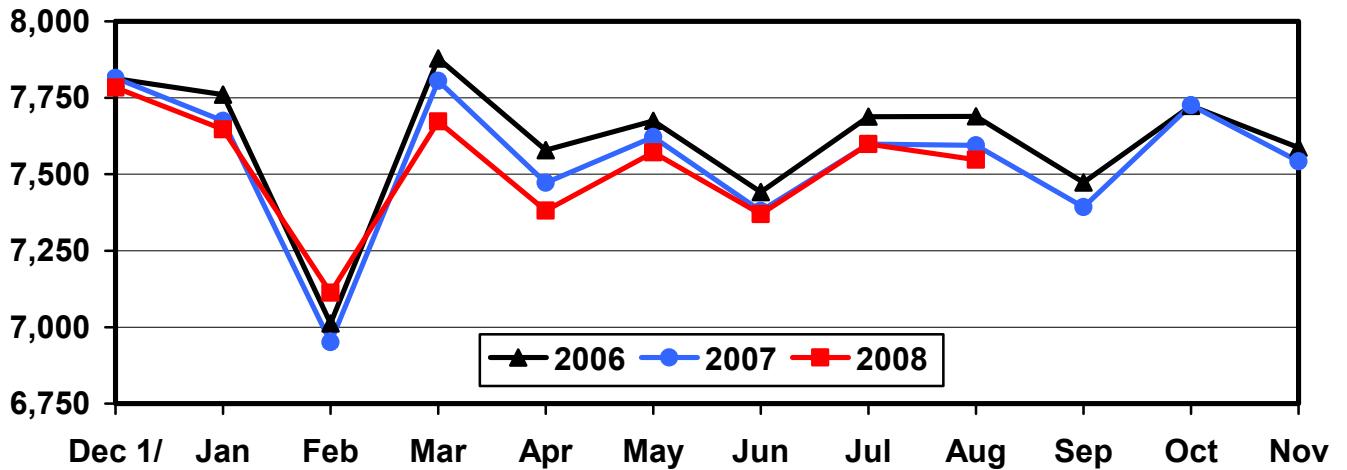
Million Layers



1/ Previous Year

U.S. All Egg Production During the Month

Million Eggs



1/ Previous Year

**Layers and Eggs: Layers on Hand and Eggs Produced by Type,
and Forced Molt, United States, July-August 2007-08 ¹**

Item	Unit	2007	2008 ²	2008 as % of 2007
Layers During Jul	1,000			
All Layers		340,035	336,191	99
Table Egg Type		280,880	277,910	99
Hatching Egg Type		59,155	58,281	99
Broiler-Type Hatching		56,415	55,590	99
Egg-Type Hatching		2,740	2,691	98
Eggs per 100 Layers During Jul	Number			
All Layers		2,235	2,260	101
Table Egg Type		2,300	2,333	101
Hatching Egg Type		1,924	1,913	99
Broiler-Type Hatching		1,900	1,891	100
Egg-Type Hatching		2,409	2,378	99
Eggs Produced During Jul	Million			
All Layers		7,599	7,599	100
Table Egg Type		6,461	6,484	100
Hatching Egg Type		1,138	1,115	98
Broiler-Type Hatching		1,072	1,051	98
Egg-Type Hatching		66	64	97
Layers on Aug 1	1,000			
All Layers		340,648	334,950	98
Table Egg Type		281,680	277,080	98
Hatching Egg Type		58,968	57,870	98
Broiler-Type Hatching		56,246	55,184	98
Egg-Type Hatching		2,722	2,686	99
Eggs per 100 Layers on Aug 1	Number			
All Layers		72.1	72.4	100
Table Egg Type		74.2	74.7	101
Hatching Egg Type		61.9	61.5	99
Broiler-Type Hatching		61.1	60.8	100
Egg-Type Hatching		77.1	75.7	98
Forced Molt Layers on Aug 1	Percent			
Percent Being Molted		3.4	3.9	115
Percent with Molt Completed		23.6	21.1	89
Layers Sold for Slaughter During Jul	1,000	12,793	13,454	105
Layers Rendered, Died, Destroyed, Composted or Disappeared For Any Reason During Jul	1,000	7,678	8,412	110
Pullets on Aug 1	1,000	102,058	102,647	101
Pullets Added During Jul ³	1,000	20,940	21,149	101

¹ Totals may not add due to rounding.

² Revised.

³ Pullet chicks less than 3 days old added to pullet flocks.

**Layers and Eggs: Layers on Hand and Eggs Produced by Type,
and Forced Molt, United States, August-September 2007-08 ¹**

Item	Unit	2007	2008	2008 as % of 2007
Layers During Aug	1,000			
All Layers		340,651	335,060	98
Table Egg Type		281,819	277,607	99
Hatching Egg Type		58,832	57,453	98
Broiler-Type Hatching		56,102	54,740	98
Egg-Type Hatching		2,730	2,713	99
Eggs per 100 Layers During Aug	Number			
All Layers		2,229	2,252	101
Table Egg Type		2,293	2,322	101
Hatching Egg Type		1,922	1,918	100
Broiler-Type Hatching		1,900	1,894	100
Egg-Type Hatching		2,381	2,396	101
Eggs Produced During Aug	Million			
All Layers		7,594	7,547	99
Table Egg Type		6,463	6,445	100
Hatching Egg Type		1,131	1,102	97
Broiler-Type Hatching		1,066	1,037	97
Egg-Type Hatching		65	65	100
Layers on Sep 1	1,000			
All Layers		340,604	335,131	98
Table Egg Type		281,936	278,113	99
Hatching Egg Type		58,668	57,018	97
Broiler-Type Hatching		55,940	54,285	97
Egg-Type Hatching		2,728	2,733	100
Eggs per 100 Layers on Sep 1	Number			
All Layers		71.7	72.8	102
Table Egg Type		73.7	75.0	102
Hatching Egg Type		61.9	62.3	101
Broiler-Type Hatching		61.2	61.6	101
Egg-Type Hatching		75.7	77.9	103
Forced Molt Layers on Sep 1	Percent			
Percent Being Molted		3.5	3.9	111
Percent with Molt Completed		24.1	20.9	87
Layers Sold for Slaughter During Aug	1,000	13,272	14,247	107
Layers Rendered, Died, Destroyed, Composted or Disappeared For Any Reason During Aug	1,000	7,402	6,570	89
Pullets on Sep 1	1,000	100,394	101,817	101
Pullets Added During Aug ²	1,000	21,649	22,414	104

¹ Totals may not add due to rounding.

² Pullet chicks less than 3 days old added to pullet flocks.

**Layers and Eggs: Layers on Hand and Eggs Produced by State
and United States, During July 2007-08**

State	Table Egg Layers in Flocks 30,000 and Above		All Layers ¹		Eggs per 100 for All Layers ¹	
	2007	2008 ²	2007	2008 ²	2007	2008 ²
	<i>1,000</i>	<i>1,000</i>	<i>1,000</i>	<i>1,000</i>	<i>Number</i>	<i>Number</i>
AL	1,194	1,255	9,153	9,213	1,945	1,932
AR	4,041	3,613	13,838	13,488	1,973	2,002
CA	18,562	19,566	18,869	19,778	2,157	2,210
CO	3,144	3,305	3,685	3,817	2,469	2,436
CT	2,646	2,743	2,702	2,802	2,443	2,320
FL	10,040	9,591	10,564	9,974	2,310	2,206
GA	9,387	9,086	19,121	18,493	2,061	2,066
HI	353	311	369	333	1,897	1,892
IL	4,719	5,154	4,945	5,381	2,285	2,286
IN	23,952	23,193	24,639	23,896	2,281	2,327
IA	51,969	52,380	52,878	53,304	2,275	2,323
ME	3,742	3,801	3,807	3,873	2,285	2,169
MD	2,440	2,312	2,593	2,459	2,275	2,277
MI	8,686	9,169	8,941	9,381	2,371	2,420
MN	10,044	9,341	10,521	9,811	2,262	2,334
MS	1,564	1,537	6,457	6,298	2,013	2,064
MO	5,600	5,317	6,717	6,432	2,263	2,394
NE	10,748	9,368	10,823	9,443	2,347	2,414
NY	3,692	3,635	3,910	3,846	2,455	2,470
NC	4,359	4,723	12,137	12,253	2,060	2,065
OH	25,253	25,986	25,815	26,586	2,270	2,340
OR	2,240	2,512	2,414	2,682	2,361	2,573
PA	20,254	20,447	21,884	21,865	2,417	2,424
SC	3,357	2,945	4,644	4,225	2,132	2,272
SD	3,043	2,407	3,143	2,432	2,259	2,220
TX	13,999	13,511	18,502	18,296	2,259	2,235
VA	1,316	1,338	3,196	3,073	2,065	2,050
WA	5,385	5,361	5,450	5,425	2,330	2,304
WI	4,216	4,076	4,774	4,635	2,409	2,352
Oth Sts ³	15,408	14,577	23,544	22,697	2,187	2,194
US	275,353	272,560	340,035	336,191	2,235	2,260

¹ Includes all layers and eggs produced in both table egg and hatching egg flocks regardless of size.

² Revised.

³ Not published separately to avoid disclosing data for individual operations.

**Layers and Eggs: Layers on Hand and Eggs Produced by State
and United States, During August 2007-08**

State	Table Egg Layers in Flocks 30,000 and Above		All Layers ¹		Eggs per 100 for All Layers ¹	
	2007	2008	2007	2008	2007	2008
	<i>1,000</i>	<i>1,000</i>	<i>1,000</i>	<i>1,000</i>	<i>Number</i>	<i>Number</i>
AL	1,155	1,389	9,051	9,361	1,945	1,923
AR	4,161	3,695	13,803	13,262	2,000	2,036
CA	18,879	19,588	19,146	19,805	2,152	2,237
CO	3,179	3,282	3,721	3,793	2,338	2,505
CT	2,653	2,862	2,708	2,920	2,437	2,260
FL	10,132	9,530	10,642	9,927	2,283	2,196
GA	9,464	9,141	19,190	18,259	2,048	2,070
HI	352	308	368	329	1,848	1,854
IL	4,794	5,172	5,020	5,394	2,251	2,243
IN	23,888	22,886	24,543	23,560	2,257	2,292
IA	51,853	52,312	52,783	53,251	2,292	2,270
ME	3,712	3,691	3,786	3,763	2,272	2,153
MD	2,631	2,421	2,772	2,559	2,128	2,423
MI	8,493	9,069	8,744	9,280	2,413	2,468
MN	10,026	9,276	10,493	9,737	2,240	2,331
MS	1,536	1,463	6,342	6,168	2,034	2,075
MO	5,606	5,229	6,779	6,327	2,168	2,371
NE	10,733	9,599	10,808	9,674	2,406	2,440
NY	3,675	3,693	3,889	3,904	2,494	2,536
NC	4,550	4,861	12,204	12,303	2,081	2,105
OH	25,369	25,561	25,922	26,153	2,253	2,309
OR	2,305	2,503	2,483	2,688	2,457	2,530
PA	20,242	20,542	21,937	21,965	2,411	2,395
SC	3,323	2,912	4,618	4,185	2,079	2,246
SD	3,100	2,449	3,200	2,474	2,250	2,304
TX	14,049	13,580	18,611	18,375	2,182	2,215
VA	1,361	1,262	3,186	3,018	2,072	2,087
WA	5,473	5,435	5,536	5,497	2,258	2,292
WI	4,231	3,988	4,789	4,546	2,443	2,354
Oth Sts ²	15,367	14,559	23,577	22,583	2,218	2,205
US	276,292	272,258	340,651	335,060	2,229	2,252

¹ Includes all layers and eggs produced in both table egg and hatching egg flocks regardless of size.

² Not published separately to avoid disclosing data for individual operations.

**Egg Production: By Type, State, and United States,
July 2007-08¹**

State	Total Production		Table Eggs ²		Hatching Eggs ²	
	2007	2008 ³	2007	2008 ³	2007	2008 ³
	<i>Million Eggs</i>	<i>Million Eggs</i>	<i>Million Eggs</i>	<i>Million Eggs</i>	<i>Million Eggs</i>	<i>Million Eggs</i>
AL	178	178	28	30	150	148
AR	273	270	93	86	180	184
CA	407	437				
CO	91	93				
CT	66	65				
FL	244	220	234	214	10	6
GA	394	382	206	200	188	182
HI	7.0	6.3	7.0	6.3	0	0
IL	113	123	109	119	4	4
IN	562	556	550	544	12	12
IA	1,203	1,238	1,188	1,223	15	15
ME	87	84				
MD	59	56	57	54	2	2
MI	212	227				
MN	238	229	229	220	9	9
MS	130	130	38	38	92	92
MO	152	154				
NE	254	228	254	228	0	0
NY	96	95				
NC	250	253	105	119	145	134
OH	586	622				
OR	57	69	55	67	2	2
PA	529	530	510	510	19	20
SC	99	96	77	73	22	23
SD	71	54	71	54	0	0
TX	418	409				
VA	66	63	30	31	36	32
WA	127	125				
WI	115	109				
Oth Sts ⁴	515	498	383	368	132	130
US	7,599	7,599	6,461	6,484	1,138	1,115

¹ Totals may not add due to rounding.

² Data by type of flock not shown for some States to avoid disclosing individual operations, data included in US totals.

³ Revised.

⁴ Not published separately to avoid disclosing data for individual operations.

**Egg Production: By Type, State, and United States,
August 2007-08 ¹**

State	Total Production		Table Eggs ²		Hatching Eggs ²	
	2007	2008	2007	2008	2007	2008
	<i>Million Eggs</i>	<i>Million Eggs</i>	<i>Million Eggs</i>	<i>Million Eggs</i>	<i>Million Eggs</i>	<i>Million Eggs</i>
AL	176	180	27	33	149	147
AR	276	270	100	91	176	179
CA	412	443				
CO	87	95				
CT	66	66				
FL	243	218	233	211	10	7
GA	393	378	205	203	188	175
HI	6.8	6.1	6.8	6.1	0	0
IL	113	121	109	118	4	3
IN	554	540	542	528	12	12
IA	1,210	1,209	1,195	1,193	15	16
ME	86	81				
MD	59	62	57	60	2	2
MI	211	229				
MN	235	227	227	219	8	8
MS	129	128	38	37	91	91
MO	147	150				
NE	260	236	260	236	0	0
NY	97	99				
NC	254	259	110	123	144	136
OH	584	604				
OR	61	68	59	66	2	2
PA	529	526	509	506	20	20
SC	96	94	74	72	22	22
SD	72	57	72	57	0	0
TX	406	407				
VA	66	63	32	31	34	32
WA	125	126				
WI	117	107				
Oth Sts ³	523	498	389	369	134	129
US	7,594	7,547	6,463	6,445	1,131	1,102

¹ Totals may not add due to rounding.

² Data by type of flock not shown for some States to avoid disclosing individual operations, data included in US totals.

³ Not published separately to avoid disclosing data for individual operations.

**Forced Molt: Percent of All Layers by Month,
United States, 2007-08 ¹**

Month	Percent Being Molted		Percent with Molt Completed	
	2007	2008	2007	2008
	<i>Percent</i>	<i>Percent</i>	<i>Percent</i>	<i>Percent</i>
Jan	4.4	2.8	24.5	22.8
Feb	3.4	3.9	24.4	21.7
Mar	2.9	2.0	24.2	22.2
Apr	2.8	2.7	23.5	21.2
May	5.4	4.0	22.2	20.5
Jun	3.6	3.6	24.1	20.7
Jul	4.0	3.3	24.2	20.9
Aug ²	3.4	3.9	23.6	21.1
Sep	3.5	3.9	24.1	20.9
Oct	3.5		23.7	
Nov	2.6		24.0	
Dec	1.8		23.9	

¹ As of first of month.

² Revised 2008 only.

**Forced Molt: Percent of All Layers by State
and United States, September 2007-08 ¹**

State	Percent Being Molted		Percent with Molt Completed	
	2007	2008	2007	2008
	<i>Percent</i>	<i>Percent</i>	<i>Percent</i>	<i>Percent</i>
AL	2.0	0.5	4.5	5.0
AR	0.5	0.5	13.0	10.5
CA	6.5	5.5	32.0	29.5
CO	4.0	6.5	16.0	20.0
CT	0.0	7.5	10.0	18.0
FL	5.5	6.5	37.0	29.0
GA	2.5	3.0	15.0	10.0
HI	9.5	9.0	53.5	53.0
IL	3.5	9.0	39.5	23.5
IN	4.0	4.5	32.0	34.0
IA	4.5	6.0	36.5	32.5
ME	0.0	0.0	0.0	0.0
MD	8.5	8.0	32.5	13.0
MI	4.0	5.0	21.0	22.5
MN	3.5	3.0	23.5	25.0
MS	2.0	2.0	10.0	9.0
MO	4.0	0.0	16.5	12.5
NE	4.0	1.0	18.0	3.5
NY	2.5	0.0	7.0	6.5
NC	0.0	2.5	9.5	9.0
OH	3.0	4.0	21.0	17.0
OR	4.0	7.0	32.5	26.0
PA	2.5	4.0	13.5	12.0
SC	4.0	0.0	29.0	21.5
SD	5.0	11.0	19.0	28.5
TX	4.5	3.0	25.5	23.5
VA	2.5	3.5	24.0	13.5
WA	6.0	4.0	42.0	25.5
WI	1.5	5.5	35.0	22.0
Oth Sts ²	3.6	1.9	25.1	23.5
US	3.5	3.9	24.1	20.9

¹ As of first of month.

² Not published separately to avoid disclosing data for individual operations.

**Hatchery Production: Eggs in Incubators, Chicks Hatched,
and Placements by Type, United States, August-September 2007-08**

Item	2007	2008	2008 as % of 2007
	<i>1,000</i>	<i>1,000</i>	<i>Percent</i>
Egg-Type			
Eggs in Incubators on Sep 1	34,771	36,320	104
Chicks Hatched During Aug	36,930	36,301	98
Chicks Hatched Jan thru Aug	302,352	317,806	105
Pullets Hatched During Aug for Intended Placements in Hatchery Supply Flocks	278	279	100
7-18 Months Earlier ¹	2,915	2,927	100
Broiler-Type			
Eggs in Incubators on Sep 1	669,099	638,539	95
Chicks Hatched During Aug	826,599	799,625	97
Chicks Hatched Jan thru Aug	6,416,472	6,459,543	101
Pullets Hatched During Aug for Intended Placements in Hatchery Supply Flocks	7,792	8,031	103
7-15 Months Earlier ²	64,870	66,490	102

¹ 2008 includes pullet chicks hatched Feb 2007 through Jan 2008.

² 2008 includes pullet chicks hatched May 2007 through Jan 2008.

**Egg-Type Eggs in Incubators: By Region and United States,
September 1, 2007-08**

Region ¹	2007	2008	2008 as % of 2007
	<i>1,000</i>	<i>1,000</i>	<i>Percent</i>
North Atlantic	5,297	5,637	106
E North Central	6,819	7,072	104
W North Central	8,392	8,598	102
South Atlantic	4,320	3,720	86
South Central	5,323	6,465	121
West	4,620	4,828	105
US	34,771	36,320	104

¹ Regional listing on page 16.

**Egg-Type Chicks Hatched: By State and United States,
August 2007-08**

State	During August			Jan-Aug		
	2007	2008	2008 as % of 2007	2007	2008	2008 as % of 2007
	<i>1,000</i>	<i>1,000</i>	<i>Percent</i>	<i>1,000</i>	<i>1,000</i>	<i>Percent</i>
GA	2,165	1,672	77	17,859	17,128	96
IN	5,088	4,741	93	43,062	41,995	98
IA	7,373	7,199	98	60,440	61,458	102
MN	1,047	1,032	99	8,168	7,390	90
PA	4,392	5,412	123	37,532	41,204	110
Oth Sts ¹	16,865	16,245	96	135,291	148,631	110
US	36,930	36,301	98	302,352	317,806	105

¹ Not published separately to avoid disclosing data for individual operations.

Egg-Type Chicks Hatched: By Month, United States, 2007-08

Month	By Months			Cumulative		
	2007	2008	2008 as % of 2007	2007	2008	2008 as % of 2007
	<i>1,000</i>	<i>1,000</i>	<i>Percent</i>	<i>1,000</i>	<i>1,000</i>	<i>Percent</i>
Jan	36,195	40,167	111	36,195	40,167	111
Feb	36,739	37,549	102	72,934	77,716	107
Mar	38,561	39,547	103	111,495	117,263	105
Apr	39,254	41,051	105	150,749	158,314	105
May	38,080	42,724	112	188,829	201,038	106
Jun	40,641	42,538	105	229,470	243,576	106
Jul	35,952	37,929	105	265,422	281,505	106
Aug	36,930	36,301	98	302,352	317,806	105
Sep	35,327			337,679		
Oct	36,332			374,011		
Nov	36,232			410,243		
Dec	35,866			446,109		

**Intended Placements: Egg-Type Pullet Chicks for Hatchery Supply
Flocks by Month and Total, United States, 2007-08¹**

Month	Pullet Chicks Hatched		2008 as % of 2007	Cumulative Potential Plcmts Relative to Current Supply Flocks 7-18 Months Earlier ²	
	2007	2008		2008	2009
	<i>1,000</i>	<i>1,000</i>	<i>Percent</i>	<i>1,000</i>	<i>1,000</i>
Jan	265	210	79	3,007	2,928
Feb	165	280	170	2,871	2,989
Mar	316	245	78	2,865	2,990
Apr	274	264	96	2,905	
May	191	227	119	2,867	
Jun	300	231	77	2,942	
Jul	183	244	133	2,982	
Aug	278	279	100	2,927	
Sep	300			3,042	
Oct	184			2,971	
Nov	281			2,961	
Dec	245			2,997	
Total	2,982				

¹ Reported by leading breeders. Coverage may not be 100 percent. Includes expected pullet chicks from eggs sold during the preceding month at the rate of 125 pullet chicks per 30 dozen case of eggs.

² For August 2008, includes breeder pullet chicks hatched Feb 2007 through Jan 2008. The 7-18 months represent the first laying cycle. Molting and additional laying cycles will increase the cumulative potential placements.

**Broiler-Type Eggs in Incubators: By Region
and United States, September 1, 2007-08**

Region ¹	2007	2008	2008 as % of 2007
	<i>1,000</i>	<i>1,000</i>	<i>Percent</i>
North Atlantic	13,257	12,287	93
E North Central	11,354	11,881	105
W North Central	30,041	29,654	99
South Atlantic	246,605	237,183	96
South Central	344,202	325,952	95
West	23,640	21,582	91
US	669,099	638,539	95

¹ Regional listing on page 16.

**Broiler-Type Chicks Hatched: By State
and United States, August 2007-08**

State	During August			Jan-Aug		
	2007	2008	2008 as % of 2007	2007	2008	2008 as % of 2007
	<i>1,000</i>	<i>1,000</i>	<i>Percent</i>	<i>1,000</i>	<i>1,000</i>	<i>Percent</i>
AL	119,091	113,525	95	902,207	922,774	102
AR	104,740	93,120	89	816,671	792,694	97
DE	15,564	13,546	87	118,425	111,844	94
FL	5,051	4,851	96	39,588	39,767	100
GA	127,754	122,197	96	995,463	988,435	99
KY	28,323	29,068	103	221,108	225,761	102
LA	14,597	13,431	92	112,252	110,091	98
MD	31,977	32,843	103	250,207	259,034	104
MS	69,419	70,073	101	548,374	555,419	101
NC	72,944	69,911	96	560,965	564,340	101
OK	25,545	24,717	97	201,811	194,247	96
PA	14,331	15,602	109	112,080	122,614	109
SC	20,429	19,703	96	156,371	157,078	100
TX	55,741	56,237	101	434,148	452,743	104
VA	23,409	23,154	99	184,092	181,789	99
CA, MO, TN, & WV	71,627	71,476	100	573,571	577,008	101
19 Sts ¹	800,542	773,454	97	6,227,333	6,255,638	100
Oth Sts ²	26,057	26,171	100	189,139	203,905	108
US	826,599	799,625	97	6,416,472	6,459,543	101

¹ States in the weekly hatchery production estimating program.

² Not published separately to avoid disclosing data for individual operations.

Broiler-Type Chicks Hatched: By Month, United States, 2007-08

Month	By Months			Cumulative		
	2007	2008	2008 as % of 2007	2007	2008	2008 as % of 2007
	<i>1,000</i>	<i>1,000</i>	<i>Percent</i>	<i>1,000</i>	<i>1,000</i>	<i>Percent</i>
Jan	796,133	821,866	103	796,133	821,866	103
Feb	722,016	771,197	107	1,518,149	1,593,063	105
Mar	809,346	832,899	103	2,327,495	2,425,962	104
Apr	799,293	797,481	100	3,126,788	3,223,443	103
May	835,773	823,718	99	3,962,561	4,047,161	102
Jun	808,329	806,202	100	4,770,890	4,853,363	102
Jul	818,983	806,555	98	5,589,873	5,659,918	101
Aug	826,599	799,625	97	6,416,472	6,459,543	101
Sep	782,152			7,198,624		
Oct	794,846			7,993,470		
Nov	760,033			8,753,503		
Dec	821,281			9,574,784		

**Intended Placements: Broiler-Type Pullet Chicks for Hatchery
Supply Flocks by Month and Total, 2007-08 ¹**

Month	Pullet Chicks Hatched		2008 as % of 2007	Cumulative Potential Plcmts Relative to Current Supply Flocks 7-15 Months Earlier ²	
	2007	2008		2008	2009
	<i>1,000</i>	<i>1,000</i>	<i>Percent</i>	<i>1,000</i>	<i>1,000</i>
US Place- ments					
Jan	7,015	7,012	100	65,333	66,073
Feb	7,071	7,536	107	65,223	65,867
Mar	7,135	7,090	99	65,397	66,292
Apr	6,692	6,867	103	65,567	
May	8,083	8,217	102	65,522	
Jun	7,799	7,527	97	66,057	
Jul ³	6,634	6,764	102	66,170	
Aug	7,792	8,031	103	66,490	
Sep	7,346			65,943	
Oct	6,970			65,234	
Nov	7,606			65,467	
Dec	7,248			65,892	
Annual Total	87,391				
Total Place- ments ⁴					
Jan	8,772	8,706	99		
Feb	8,811	9,498	108		
Mar	9,025	9,245	102		
Apr	8,358	8,676	104		
May	9,780	10,089	103		
Jun	9,435	9,339	99		
Jul ⁵	8,037	8,319	104		
Aug	9,466	9,672	102		
Sep	8,994				
Oct	9,076				
Nov	9,204				
Dec	9,043				
Annual Total	108,001				

¹ Reported by leading breeders. Coverage may not be 100 percent. Includes expected pullet chicks from eggs sold during the preceding month at the rate of 125 pullet chicks per 30 dozen case of eggs.

² For Aug 2008, includes breeder pullet chicks hatched May 2007 through Jan 2008.

³ Revised 2008 pullet chicks hatched and cumulative placements for February 2009.

⁴ U.S. production of intended placements worldwide.

⁵ Revised 2008 only.

Reliability of Chickens and Eggs Estimates

Survey Procedures: Primary data for the "**Chickens and Eggs**" report are from weekly and/or monthly questionnaires sent to producers. An attempt is made to collect information for layer and egg estimates from each known contractor and independent producer who has at least 30,000 table egg layers, flocks of hatchery supply layers, or pullet only operations with at least 500 pullets. Coverage for operations with less than 30,000 table egg layers are estimated each month based on data reported in December. Approximately 650 contractors, independent egg producers, and pullet only operations are contacted each month. All known hatcheries, approximately 300, are contacted for information on a weekly and/or monthly basis.

Estimating Procedures: Sound statistical methodology is employed to derive estimates from the reported data. All data are analyzed for unusual values. Data from each operation are compared to their own past operating profile and to trends from similar operations. Data for missing operations are estimated based on similar operations or historical data. NASS field offices prepare these estimates by using a combination of survey indications and historic trends. Individual State estimates are reviewed by the Agricultural Statistics Board for reasonableness. Individual hatchery data are summed to State, regional, and U.S. totals.

For chicken hatcheries, chicks hatched consist of all chicks of domesticated breeds including males and chicks destined for hatchery supply flocks and research purposes. Eggs set are eggs in incubators for the purpose of hatching. The relationship of egg-type chicks hatched to chicken inventory and poultry marketings are carefully monitored. The disposition of egg-type chicks hatched prior to placement into the laying flock can vary significantly, which can make comparisons to changes in layer inventory inconsistent over time. Broiler chicks placed are specifically placed on feed for meat production. Intended placement data reported by leading breeders include pullet chicks expected from eggs sold the preceding month. The breeders in this report account for a large percentage of replacement pullets for hatchery supply flocks. Production of replacement pullets by these breeders indicates the number of pullets available to hatchery supply layer flocks several months before the pullets will actually move into the laying flocks. "Hatchery Supply Flocks" include all generations of layers which could lay eggs to supply a hatchery. This includes the generations of parents, grandparents, great-grandparents, pedigree, etc. Also included are research flocks, vaccine flocks, and specific pathogen-free flocks. The broiler cumulative potential placements are a moving total of the intended placements 7-15 months earlier. The egg-type cumulative potential placements of 7-18 months earlier represent the first laying cycle. Molting and additional laying cycles will increase the cumulative potential placements of egg-type hatching flocks.

Revision Policy: The previous month's estimates are subject to revision if late reports or corrected data indicates a different level. Additionally, revisions after the monthly report will be made at the end of the marketing year and published in the annual reports of "**Chickens and Eggs Summary**" and "**Hatchery Production**".

Reliability: Estimates are based on a census of all known contractors and independent producers who have at least 30,000 table egg layers, flocks of hatchery supply layers, pullet only operations with at least 500 pullets, or operating hatcheries and therefore, have no sampling error. However, estimates are subject to errors such as omission, duplication, and mistakes in reporting, recording, and processing the data. While these errors cannot be measured directly, they are minimized through strict quality controls in the data collection process and a careful review of all reported data for consistency and reasonableness.

To assist in evaluating the reliability of the estimates in this report, the "Root Mean Square Error" is shown for selected items in the following table. The "Root Mean Square Error" is a statistical measure based on past performance and is computed using the differences between first and final estimates. The "Root Mean Square Error" for all layers over the past 24 months is 0.7 percent. This means that chances are 2 out of 3 that the final estimate will not be above or below the current estimate of 335 million layers by more than 0.7 percent. Chances are 9 out of 10 that the difference will not exceed 1.3 percent.

Reliability of Layer and Egg Estimates ¹

Item	Root Mean Square Error	90 Percent Confidence Level		Difference Between First and Latest Estimates			Number of Years	
				Average	Smallest	Largest	First Above Latest	First Below Latest
All Layers	<i>Percent</i> 0.7	<i>Percent</i> 1.3	<i>1,000</i> 43	<i>1,000</i> 1,268	<i>1,000</i> 44	<i>1,000</i> 3,157	<i>Number</i> 4	<i>Number</i> 20
Eggs	0.4	0.8	<i>Million Eggs</i> 1	<i>Million Eggs</i> 28	<i>Million Eggs</i> 2	<i>Million Eggs</i> 65	6	18

¹ Based on data for the past 24 months.

Regional Listing

North Atlantic: CT, ME, MA, NH, NJ, NY, PA, RI, VT.
 East North Central: IL, IN, MI, OH, WI.
 West North Central: IA, KS, MN, MO, NE, ND, SD.
 South Atlantic: DE, FL, GA, MD, NC, SC, VA, WV.
 South Central: AL, AR, KY, LA, MS, OK, TN, TX.
 West: AK, AZ, CA, CO, HI, ID, MT, NM, NV, OR, UT, WA, WY.

Information Contacts

Listed below are the commodity specialists in the Livestock Branch of the National Agricultural Statistics Service to contact for additional information.

Dan Kerestes, Chief, Livestock Branch(202) 720-3570

Bruce Boess, Head, Poultry and Specialty Commodities Section.....(202) 720-4447

David Colwell - Cold Storage(202) 720-8784

Fleming Gibson - Poultry Slaughter, Turkey Hatchery, Turkeys Raised.....(202) 690-3237

Sharyn Lavender - Broiler Hatchery, Chicken Hatchery, Honey(202) 720-3244

Kim Linonis - Layers, Eggs(202) 690-8632

Toby Paterson - Catfish Processing, Catfish Production, Trout Production,
 Census of Aquaculture, Egg Products, Mink.....(202) 720-0585

ACCESS TO REPORTS!!

For your convenience, there are several ways to obtain NASS reports, data products, and services:

INTERNET ACCESS

All NASS reports are available free of charge on the worldwide Internet. For access, connect to the Internet and go to the NASS Home Page at www.nass.usda.gov.

E-MAIL SUBSCRIPTION

All NASS reports are available by subscription free of charge direct to your e-mail address. Starting with the NASS Home Page at www.nass.usda.gov, under the right navigation, *Receive reports by Email*, click on **National** or **State**. Follow the instructions on the screen.

PRINTED REPORTS OR DATA PRODUCTS

CALL OUR TOLL-FREE ORDER DESK: 800-999-6779 (U.S. and Canada)
Other areas, please call 703-605-6220 FAX: 703-605-6900
(Visa, MasterCard, check, or money order acceptable for payment.)

ASSISTANCE

For **assistance** with general agricultural statistics or further information about NASS or its products or services, contact the **Agricultural Statistics Hotline** at **800-727-9540**, 7:30 a.m. to 4:00 p.m. ET, or e-mail: nass@nass.usda.gov.

The U.S. Department of Agriculture (USDA) prohibits discrimination in all its programs and activities on the basis of race, color, national origin, age, disability, and where applicable, sex, marital status, familial status, parental status, religion, sexual orientation, genetic information, political beliefs, reprisal, or because all or a part of an individual's income is derived from any public assistance program. (Not all prohibited bases apply to all programs.) Persons with disabilities who require alternative means for communication of program information (Braille, large print, audiotape, etc.) should contact USDA's TARGET Center at (202) 720-2600 (voice and TDD).

To file a complaint of discrimination, write to USDA, Director, Office of Civil Rights, 1400 Independence Avenue, S.W., Washington, D.C. 20250-9410, or call (800) 795-3272 (voice) or (202) 720-6382 (TDD). USDA is an equal opportunity provider and employer.