

Chickens and Eggs

Released October 21, 2008, by the National Agricultural Statistics Service (NASS), Agricultural Statistics Board, U.S. Department of Agriculture. For information on "Layers and Eggs" call Kim Linonis at (202) 690-8632, for "Chicks Hatched" call Sharyn Lavender at (202) 720-3244, office hours 7:30 a.m. to 4:00 p.m. ET.

September Egg Production Down 1 Percent

U.S. egg production totaled 7.34 billion during September 2008, down 1 percent from last year. Production included 6.28 billion table eggs, and 1.06 billion hatching eggs, of which 990 million were broiler-type and 65 million were egg-type. The total number of layers during September 2008 averaged 334 million, down 2 percent from last year. September egg production per 100 layers was 2,194 eggs, up 1 percent from September 2007.

All layers in the U.S. on October 1, 2008 totaled 333 million, down 2 percent from last year. The 333 million layers consisted of 277 million layers producing table or market type eggs, 53.2 million layers producing broiler-type hatching eggs, and 2.90 million layers producing egg-type hatching eggs. Rate of lay per day on October 1, 2008, averaged 73.4 eggs per 100 layers, up 1 percent from October 1, 2007.

Egg-Type Chicks Hatched Up 3 Percent

Egg-type chicks hatched during September 2008 totaled 36.4 million, up 3 percent from September 2007. Eggs in incubators totaled 35.5 million on October 1, 2008, up 5 percent from a year ago.

Domestic placements of egg-type pullet chicks for future hatchery supply flocks by leading breeders totaled 210 thousand during September 2008, down 30 percent from September 2007.

Broiler-Type Chicks Hatched Down 3 Percent

Broiler-type chicks hatched during September 2008 totaled 757 million, down 3 percent from September 2007. Eggs in incubators totaled 606 million on October 1, 2008, down 6 percent from a year earlier.

Leading breeders placed 6.89 million broiler-type pullet chicks for future domestic hatchery supply flocks during September 2008, down 6 percent from September 2007.

Contents

	Page
U.S. Average Number of Layers on Hand and Egg Production.....	1
U.S. Layers on Hand and Eggs Produced by Type, Forced Molt, and Pullets.....	3
Layers on Hand and Eggs Produced by State.....	5
Egg Production by Type and State	7
Forced Molt	9
U.S. Hatchery Production Summary	10
Egg-Type Hatchery	11
Egg-Type Intended Placements	12
Broiler-Type Hatchery	12
Broiler-Type Intended Placements	14
Reliability of Chickens and Eggs Estimates.....	15
Regional Listing	16
Information Contacts.....	16

**All Layers: Average Number on Hand During the Month,
United States, 2006-08**

Month	2006	2007	2008
	<i>1,000 Layers</i>	<i>1,000 Layers</i>	<i>1,000 Layers</i>
Dec ¹	349,699	349,862	344,965
Jan	351,313	348,897	344,791
Feb	351,754	348,843	343,129
Mar	352,116	348,201	341,906
Apr	350,398	345,578	341,203
May	347,069	342,469	340,259
Jun	344,631	340,237	338,612
Jul	343,285	340,035	336,191
Aug ²	343,611	340,651	335,171
Sep	345,217	340,984	334,374
Oct	346,608	342,637	
Nov	348,853	344,229	

¹ December preceding year.

² Revised 2008 only.

**Eggs: Production During the Month by Type,
United States, 2007-08 ¹**

Month	Total Eggs		Table Eggs		Hatching Eggs	
	2007	2008	2007	2008	2007	2008
	<i>Million Eggs</i>	<i>Million Eggs</i>	<i>Million Eggs</i>	<i>Million Eggs</i>	<i>Million Eggs</i>	<i>Million Eggs</i>
Dec ²	7,815	7,784	6,709	6,654	1,106	1,129
Jan	7,675	7,647	6,561	6,508	1,114	1,139
Feb	6,951	7,113	5,943	6,042	1,008	1,071
Mar	7,806	7,673	6,672	6,525	1,134	1,148
Apr	7,472	7,381	6,367	6,275	1,105	1,106
May	7,622	7,571	6,475	6,426	1,148	1,145
Jun	7,380	7,370	6,268	6,275	1,113	1,094
Jul	7,599	7,599	6,461	6,484	1,138	1,115
Aug ³	7,594	7,549	6,463	6,446	1,131	1,103
Sep	7,393	7,336	6,296	6,281	1,097	1,055
Oct	7,726		6,594		1,132	
Nov	7,542		6,451		1,090	
During Year	90,581		77,266		13,317	

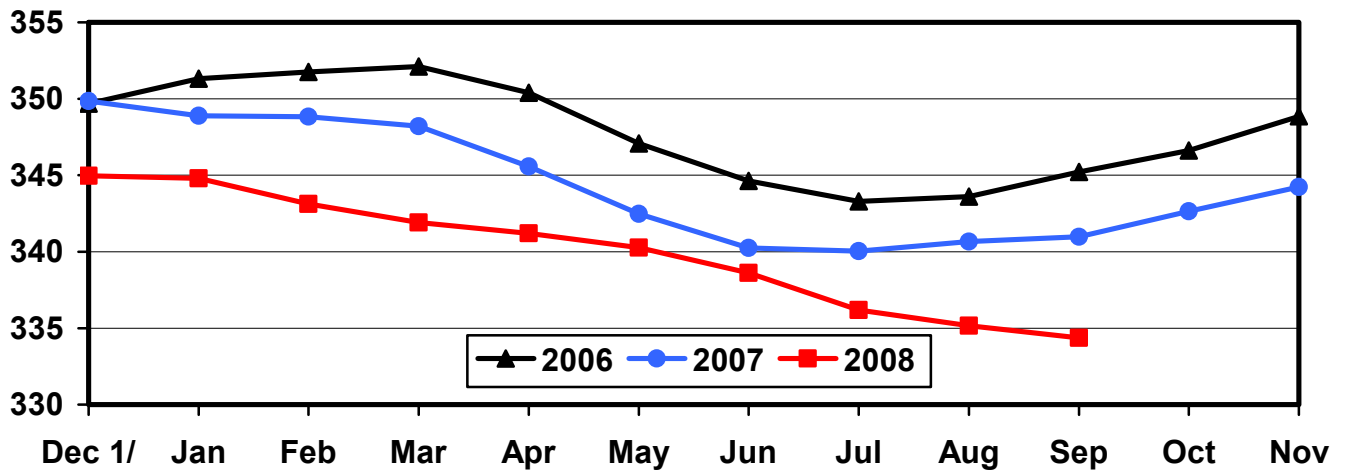
¹ Totals may not add due to rounding.

² December preceding year.

³ Revised 2008 only.

U.S. Average Number of Layers During the Month

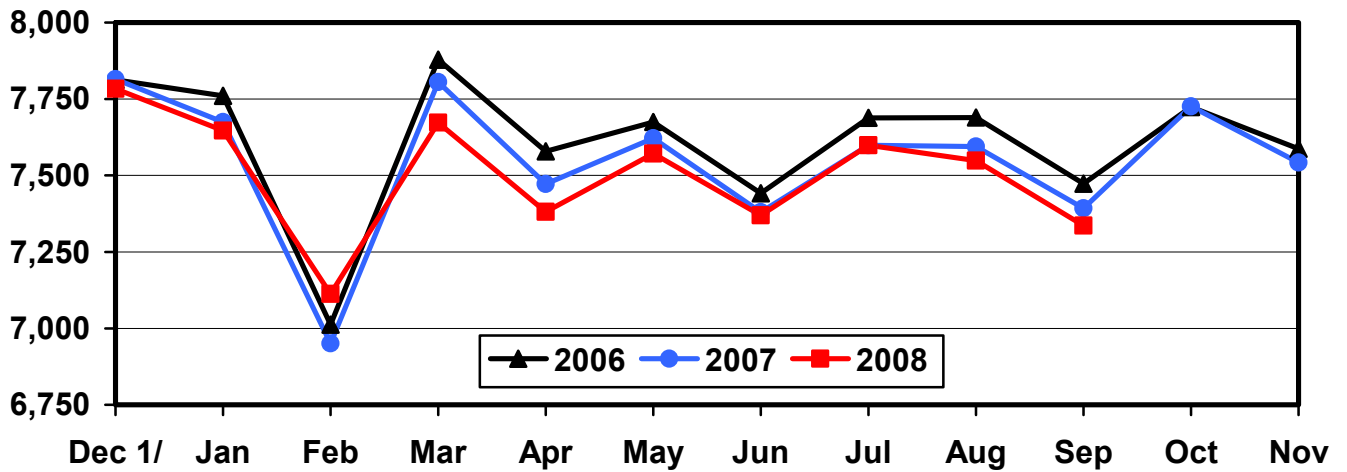
Million Layers



1/ Previous Year

U.S. All Egg Production During the Month

Million Eggs



1/ Previous Year

**Layers and Eggs: Layers on Hand and Eggs Produced by Type,
and Forced Molt, United States, August-September 2007-08 ¹**

Item	Unit	2007	2008 ²	2008 as % of 2007
Layers During Aug	1,000			
All Layers		340,651	335,171	98
Table Egg Type		281,819	277,663	99
Hatching Egg Type		58,832	57,508	98
Broiler-Type Hatching		56,102	54,795	98
Egg-Type Hatching		2,730	2,713	99
Eggs per 100 Layers During Aug	Number			
All Layers		2,229	2,252	101
Table Egg Type		2,293	2,322	101
Hatching Egg Type		1,922	1,918	100
Broiler-Type Hatching		1,900	1,894	100
Egg-Type Hatching		2,381	2,396	101
Eggs Produced During Aug	Million			
All Layers		7,594	7,549	99
Table Egg Type		6,463	6,446	100
Hatching Egg Type		1,131	1,103	98
Broiler-Type Hatching		1,066	1,038	97
Egg-Type Hatching		65	65	100
Layers on Sep 1	1,000			
All Layers		340,604	335,353	98
Table Egg Type		281,936	278,225	99
Hatching Egg Type		58,668	57,128	97
Broiler-Type Hatching		55,940	54,395	97
Egg-Type Hatching		2,728	2,733	100
Eggs per 100 Layers on Sep 1	Number			
All Layers		71.7	72.8	102
Table Egg Type		73.7	75.0	102
Hatching Egg Type		61.9	62.3	101
Broiler-Type Hatching		61.2	61.6	101
Egg-Type Hatching		75.7	77.9	103
Forced Molt Layers on Sep 1	Percent			
Percent Being Molted		3.5	3.9	111
Percent with Molt Completed		24.1	20.9	87
Layers Sold for Slaughter During Aug	1,000	13,272	14,258	107
Layers Rendered, Died, Destroyed, Composted or Disappeared For Any Reason During Aug	1,000	7,402	6,573	89
Pullets on Sep 1	1,000	100,394	102,083	102
Pullets Added During Aug ³	1,000	21,649	22,433	104

¹ Totals may not add due to rounding.

² Revised.

³ Pullet chicks less than 3 days old added to pullet flocks.

**Layers and Eggs: Layers on Hand and Eggs Produced by Type,
and Forced Molt, United States, September-October 2007-08¹**

Item	Unit	2007	2008	2008 as % of 2007
Layers During Sep	1,000			
All Layers		340,984	334,374	98
Table Egg Type		282,178	277,773	98
Hatching Egg Type		58,806	56,601	96
Broiler-Type Hatching		56,061	53,781	96
Egg-Type Hatching		2,745	2,820	103
Eggs per 100 Layers During Sep	Number			
All Layers		2,168	2,194	101
Table Egg Type		2,231	2,261	101
Hatching Egg Type		1,865	1,864	100
Broiler-Type Hatching		1,843	1,841	100
Egg-Type Hatching		2,332	2,305	99
Eggs Produced During Sep	Million			
All Layers		7,393	7,336	99
Table Egg Type		6,296	6,281	100
Hatching Egg Type		1,097	1,055	96
Broiler-Type Hatching		1,033	990	96
Egg-Type Hatching		64	65	102
Layers on Oct 1	1,000			
All Layers		341,322	333,349	98
Table Egg Type		282,398	277,299	98
Hatching Egg Type		58,924	56,050	95
Broiler-Type Hatching		56,169	53,153	95
Egg-Type Hatching		2,755	2,897	105
Eggs per 100 Layers on Oct 1	Number			
All Layers		72.7	73.4	101
Table Egg Type		74.9	75.7	101
Hatching Egg Type		62.1	61.9	100
Broiler-Type Hatching		61.3	61.1	100
Egg-Type Hatching		78.9	76.1	96
Forced Molt Layers on Oct 1	Percent			
Percent Being Molted		3.5	3.5	100
Percent with Molt Completed		23.7	21.9	92
Layers Sold for Slaughter During Sep	1,000	12,956	13,907	107
Layers Rendered, Died, Destroyed, Composted or Disappeared For Any Reason During Sep	1,000	6,716	7,224	108
Pullets on Oct 1	1,000	100,646	100,861	100
Pullets Added During Sep ²	1,000	22,712	20,361	90

¹ Totals may not add due to rounding.

² Pullet chicks less than 3 days old added to pullet flocks.

**Layers and Eggs: Layers on Hand and Eggs Produced by State
and United States, During August 2007-08**

State	Table Egg Layers in Flocks 30,000 and Above		All Layers ¹		Eggs per 100 for All Layers ¹	
	2007	2008 ²	2007	2008 ²	2007	2008 ²
	<i>1,000</i>	<i>1,000</i>	<i>1,000</i>	<i>1,000</i>	<i>Number</i>	<i>Number</i>
AL	1,155	1,389	9,051	9,361	1,945	1,923
AR	4,161	3,695	13,803	13,262	2,000	2,036
CA	18,879	19,588	19,146	19,805	2,152	2,237
CO	3,179	3,282	3,721	3,793	2,338	2,505
CT	2,653	2,862	2,708	2,920	2,437	2,260
FL	10,132	9,530	10,642	9,927	2,283	2,196
GA	9,464	9,141	19,190	18,259	2,048	2,070
HI	352	308	368	329	1,848	1,854
IL	4,794	5,172	5,020	5,394	2,251	2,243
IN	23,888	22,886	24,543	23,560	2,257	2,292
IA	51,853	52,312	52,783	53,251	2,292	2,270
ME	3,712	3,691	3,786	3,763	2,272	2,153
MD	2,631	2,421	2,772	2,559	2,128	2,423
MI	8,493	9,069	8,744	9,280	2,413	2,468
MN	10,026	9,276	10,493	9,737	2,240	2,331
MS	1,536	1,463	6,342	6,168	2,034	2,075
MO	5,606	5,229	6,779	6,327	2,168	2,371
NE	10,733	9,599	10,808	9,674	2,406	2,440
NY	3,675	3,693	3,889	3,904	2,494	2,536
NC	4,550	4,861	12,204	12,303	2,081	2,105
OH	25,369	25,561	25,922	26,153	2,253	2,309
OR	2,305	2,503	2,483	2,688	2,457	2,530
PA	20,242	20,542	21,937	21,965	2,411	2,395
SC	3,323	2,968	4,618	4,241	2,079	2,240
SD	3,100	2,449	3,200	2,474	2,250	2,304
TX	14,049	13,580	18,611	18,375	2,182	2,215
VA	1,361	1,262	3,186	3,018	2,072	2,087
WA	5,473	5,435	5,536	5,497	2,258	2,292
WI	4,231	3,988	4,789	4,546	2,443	2,354
Oth Sts ³	15,367	14,559	23,577	22,638	2,218	2,204
US	276,292	272,314	340,651	335,171	2,229	2,252

¹ Includes all layers and eggs produced in both table egg and hatching egg flocks regardless of size.

² Revised.

³ Not published separately to avoid disclosing data for individual operations.

**Layers and Eggs: Layers on Hand and Eggs Produced by State
and United States, During September 2007-08**

State	Table Egg Layers in Flocks 30,000 and Above		All Layers ¹		Eggs per 100 for All Layers ¹	
	2007	2008	2007	2008	2007	2008
	<i>1,000</i>	<i>1,000</i>	<i>1,000</i>	<i>1,000</i>	<i>Number</i>	<i>Number</i>
AL	1,182	1,398	9,082	9,332	1,861	1,886
AR	4,241	3,727	13,900	13,125	1,928	2,004
CA	18,716	19,395	18,945	19,613	2,117	2,177
CO	3,213	3,155	3,755	3,667	2,210	2,400
CT	2,824	2,866	2,879	2,921	2,327	2,191
FL	10,160	9,563	10,656	9,930	2,187	2,105
GA	9,433	9,278	19,198	18,178	2,016	2,002
HI	350	309	366	330	1,749	1,758
IL	4,891	5,183	5,115	5,395	2,268	2,187
IN	24,055	23,093	24,722	23,791	2,205	2,215
IA	51,405	52,270	52,346	53,214	2,222	2,208
ME	3,743	3,602	3,822	3,678	2,093	2,202
MD	2,626	2,262	2,759	2,396	2,066	2,295
MI	8,539	9,034	8,789	9,241	2,355	2,402
MN	9,870	9,271	10,334	9,726	2,235	2,313
MS	1,519	1,466	6,230	6,171	1,958	1,993
MO	5,646	5,318	6,821	6,429	2,184	2,318
NE	10,526	9,697	10,601	9,772	2,302	2,425
NY	3,688	3,787	3,902	3,997	2,358	2,452
NC	4,731	4,840	12,324	12,060	2,053	2,015
OH	25,479	25,424	26,055	26,021	2,226	2,275
OR	2,327	2,406	2,490	2,591	2,490	2,431
PA	20,397	20,449	22,090	21,856	2,313	2,343
SC	3,395	3,050	4,696	4,342	2,044	2,050
SD	3,098	2,466	3,198	2,491	2,189	2,288
TX	14,219	13,853	18,850	18,612	2,101	2,165
VA	1,392	1,257	3,257	2,968	2,026	1,988
WA	5,485	5,580	5,546	5,641	2,146	2,269
WI	4,376	3,979	4,941	4,532	2,287	2,229
Oth Sts ²	15,125	14,446	23,315	22,354	2,175	2,156
US	276,651	272,424	340,984	334,374	2,168	2,194

¹ Includes all layers and eggs produced in both table egg and hatching egg flocks regardless of size.

² Not published separately to avoid disclosing data for individual operations.

**Egg Production: By Type, State, and United States,
August 2007-08¹**

State	Total Production		Table Eggs ²		Hatching Eggs ²	
	2007	2008 ³	2007	2008 ³	2007	2008 ³
	<i>Million Eggs</i>	<i>Million Eggs</i>	<i>Million Eggs</i>	<i>Million Eggs</i>	<i>Million Eggs</i>	<i>Million Eggs</i>
AL	176	180	27	33	149	147
AR	276	270	100	91	176	179
CA	412	443				
CO	87	95				
CT	66	66				
FL	243	218	233	211	10	7
GA	393	378	205	203	188	175
HI	6.8	6.1	6.8	6.1	0	0
IL	113	121	109	118	4	3
IN	554	540	542	528	12	12
IA	1,210	1,209	1,195	1,193	15	16
ME	86	81				
MD	59	62	57	60	2	2
MI	211	229				
MN	235	227	227	219	8	8
MS	129	128	38	37	91	91
MO	147	150				
NE	260	236	260	236	0	0
NY	97	99				
NC	254	259	110	123	144	136
OH	584	604				
OR	61	68	59	66	2	2
PA	529	526	509	506	20	20
SC	96	95	74	73	22	22
SD	72	57	72	57	0	0
TX	406	407				
VA	66	63	32	31	34	32
WA	125	126				
WI	117	107				
Oth Sts ⁴	523	499	389	369	134	130
US	7,594	7,549	6,463	6,446	1,131	1,103

¹ Totals may not add due to rounding.

² Data by type of flock not shown for some States to avoid disclosing individual operations, data included in US totals.

³ Revised.

⁴ Not published separately to avoid disclosing data for individual operations.

**Egg Production: By Type, State, and United States,
September 2007-08 ¹**

State	Total Production		Table Eggs ²		Hatching Eggs ²	
	2007	2008	2007	2008	2007	2008
	<i>Million Eggs</i>	<i>Million Eggs</i>	<i>Million Eggs</i>	<i>Million Eggs</i>	<i>Million Eggs</i>	<i>Million Eggs</i>
AL	169	176	26	33	143	143
AR	268	263	97	92	171	171
CA	401	427				
CO	83	88				
CT	67	64				
FL	233	209	224	203	9	6
GA	387	364	203	199	184	165
HI	6.4	5.8	6.4	5.8	0	0
IL	116	118	113	115	3	3
IN	545	527	533	515	12	12
IA	1,163	1,175	1,148	1,159	15	16
ME	80	81				
MD	57	55	55	53	2	2
MI	207	222				
MN	231	225	223	217	8	8
MS	122	123	36	35	86	88
MO	149	149				
NE	244	237	244	237	0	0
NY	92	98				
NC	253	243	113	114	140	129
OH	580	592				
OR	62	63	60	61	2	2
PA	511	512	492	492	19	20
SC	96	89	74	68	22	21
SD	70	57	70	57	0	0
TX	396	403				
VA	66	59	32	29	34	30
WA	119	128				
WI	113	101				
Oth Sts ³	507	482	377	359	130	123
US	7,393	7,336	6,296	6,281	1,097	1,055

¹ Totals may not add due to rounding.

² Data by type of flock not shown for some States to avoid disclosing individual operations, data included in US totals.

³ Not published separately to avoid disclosing data for individual operations.

**Forced Molt: Percent of All Layers by Month,
United States, 2007-08 ¹**

Month	Percent Being Molted		Percent with Molt Completed	
	2007	2008	2007	2008
	<i>Percent</i>	<i>Percent</i>	<i>Percent</i>	<i>Percent</i>
Jan	4.4	2.8	24.5	22.8
Feb	3.4	3.9	24.4	21.7
Mar	2.9	2.0	24.2	22.2
Apr	2.8	2.7	23.5	21.2
May	5.4	4.0	22.2	20.5
Jun	3.6	3.6	24.1	20.7
Jul	4.0	3.3	24.2	20.9
Aug	3.4	3.9	23.6	21.1
Sep	3.5	3.9	24.1	20.9
Oct	3.5	3.5	23.7	21.9
Nov	2.6		24.0	
Dec	1.8		23.9	

¹ As of first of month.

**Forced Molt: Percent of All Layers by State
and United States, October 2007-08 ¹**

State	Percent Being Molted		Percent with Molt Completed	
	2007	2008	2007	2008
	<i>Percent</i>	<i>Percent</i>	<i>Percent</i>	<i>Percent</i>
AL	1.0	1.5	5.5	4.5
AR	2.5	1.0	12.5	11.5
CA	5.0	4.0	31.5	34.0
CO	7.5	2.5	15.5	19.0
CT	6.0	0.0	9.5	22.0
FL	5.0	6.5	39.5	32.0
GA	2.0	2.5	15.0	12.0
HI	8.5	15.0	61.0	58.0
IL	0.0	11.0	39.0	22.5
IN	4.5	5.0	31.5	34.0
IA	5.0	4.0	36.5	34.5
ME	0.0	0.0	0.0	0.0
MD	6.0	2.5	18.0	12.0
MI	1.5	3.5	19.0	21.5
MN	4.0	2.5	28.0	23.5
MS	2.0	2.0	10.0	10.5
MO	0.5	1.5	16.0	8.5
NE	2.0	0.0	16.5	4.5
NY	5.5	1.0	5.5	5.0
NC	0.5	0.0	9.0	12.0
OH	2.5	5.0	19.5	17.0
OR	6.5	5.5	32.5	32.0
PA	4.0	1.5	12.0	11.0
SC	0.0	4.0	27.0	19.5
SD	5.0	10.0	19.0	28.5
TX	2.5	4.0	27.0	25.5
VA	2.5	6.5	21.0	13.5
WA	7.5	5.0	42.0	27.0
WI	6.5	6.0	35.5	24.5
Oth Sts ²	3.4	3.4	22.8	23.6
US	3.5	3.5	23.7	21.9

¹ As of first of month.

² Not published separately to avoid disclosing data for individual operations.

**Hatchery Production: Eggs in Incubators, Chicks Hatched,
and Placements by Type, United States, September-October 2007-08**

Item	2007	2008	2008 as % of 2007
	<i>1,000</i>	<i>1,000</i>	<i>Percent</i>
Egg-Type			
Eggs in Incubators on Oct 1	33,695	35,493	105
Chicks Hatched During Sep	35,327	36,428	103
Chicks Hatched Jan thru Sep	337,679	354,234	105
Pullets Hatched During Sep for Intended Placements in Hatchery Supply Flocks	300	210	70
7-18 Months Earlier ¹	2,880	3,042	106
Broiler-Type			
Eggs in Incubators on Oct 1	647,140	606,189	94
Chicks Hatched During Sep	782,152	756,565	97
Chicks Hatched Jan thru Sep	7,198,624	7,216,108	100
Pullets Hatched During Sep for Intended Placements in Hatchery Supply Flocks	7,346	6,886	94
7-15 Months Earlier ²	64,410	65,943	102

¹ 2008 includes pullet chicks hatched Mar 2007 through Feb 2008.

² 2008 includes pullet chicks hatched Jun 2007 through Feb 2008.

**Egg-Type Eggs in Incubators: By Region and United States,
October 1, 2007-08**

Region ¹	2007	2008	2008 as % of 2007
	<i>1,000</i>	<i>1,000</i>	<i>Percent</i>
North Atlantic	5,502	5,478	100
E North Central	5,731	7,007	122
W North Central	8,213	8,677	106
South Atlantic	4,313	4,186	97
South Central	4,691	5,274	112
West	5,245	4,871	93
US	33,695	35,493	105

¹ Regional listing on page 16.

**Egg-Type Chicks Hatched: By State and United States,
September 2007-08**

State	During September			Jan-Sep		
	2007	2008	2008 as % of 2007	2007	2008	2008 as % of 2007
	<i>1,000</i>	<i>1,000</i>	<i>Percent</i>	<i>1,000</i>	<i>1,000</i>	<i>Percent</i>
GA	2,175	2,034	94	20,034	19,162	96
IN	4,830	4,903	102	47,892	46,898	98
IA	6,420	7,208	112	66,860	68,666	103
MN	1,012	1,056	104	9,180	8,446	92
PA	4,165	4,374	105	41,697	45,578	109
Oth Sts ¹	16,725	16,853	101	152,016	165,484	109
US	35,327	36,428	103	337,679	354,234	105

¹ Not published separately to avoid disclosing data for individual operations.

Egg-Type Chicks Hatched: By Month, United States, 2007-08

Month	By Months			Cumulative		
	2007	2008	2008 as % of 2007	2007	2008	2008 as % of 2007
	<i>1,000</i>	<i>1,000</i>	<i>Percent</i>	<i>1,000</i>	<i>1,000</i>	<i>Percent</i>
Jan	36,195	40,167	111	36,195	40,167	111
Feb	36,739	37,549	102	72,934	77,716	107
Mar	38,561	39,547	103	111,495	117,263	105
Apr	39,254	41,051	105	150,749	158,314	105
May	38,080	42,724	112	188,829	201,038	106
Jun	40,641	42,538	105	229,470	243,576	106
Jul	35,952	37,929	105	265,422	281,505	106
Aug	36,930	36,301	98	302,352	317,806	105
Sep	35,327	36,428	103	337,679	354,234	105
Oct	36,332			374,011		
Nov	36,232			410,243		
Dec	35,866			446,109		

**Intended Placements: Egg-Type Pullet Chicks for Hatchery Supply
Flocks by Month and Total, United States, 2007-08¹**

Month	Pullet Chicks Hatched		2008 as % of 2007	Cumulative Potential Plcmts Relative to Current Supply Flocks 7-18 Months Earlier ²	
	2007	2008		2008	2009
	<i>1,000</i>	<i>1,000</i>	<i>Percent</i>	<i>1,000</i>	<i>1,000</i>
Jan	265	210	79	3,007	2,928
Feb	165	280	170	2,871	2,989
Mar	316	245	78	2,865	2,990
Apr	274	264	96	2,905	2,900
May	191	227	119	2,867	
Jun	300	231	77	2,942	
Jul	183	244	133	2,982	
Aug	278	279	100	2,927	
Sep	300	210	70	3,042	
Oct	184			2,971	
Nov	281			2,961	
Dec	245			2,997	
Total	2,982				

¹ Reported by leading breeders. Coverage may not be 100 percent. Includes expected pullet chicks from eggs sold during the preceding month at the rate of 125 pullet chicks per 30 dozen case of eggs.

² For September 2008, includes breeder pullet chicks hatched Mar 2007 through Feb 2008. The 7-18 months represent the first laying cycle. Molting and additional laying cycles will increase the cumulative potential placements.

**Broiler-Type Eggs in Incubators: By Region
and United States, October 1, 2007-08**

Region ¹	2007	2008	2008 as % of 2007
	<i>1,000</i>	<i>1,000</i>	<i>Percent</i>
North Atlantic	12,911	11,531	89
E North Central	10,570	11,299	107
W North Central	28,019	27,740	99
South Atlantic	240,159	223,165	93
South Central	332,026	310,878	94
West	23,455	21,576	92
US	647,140	606,189	94

¹ Regional listing on page 16.

**Broiler-Type Chicks Hatched: By State
and United States, September 2007-08**

State	During September			Jan-Sep		
	2007	2008	2008 as % of 2007	2007	2008	2008 as % of 2007
	<i>1,000</i>	<i>1,000</i>	<i>Percent</i>	<i>1,000</i>	<i>1,000</i>	<i>Percent</i>
AL	111,529	107,443	96	1,013,736	1,030,217	102
AR	100,266	89,103	89	916,937	881,797	96
DE	14,402	12,656	88	132,827	124,500	94
FL	4,820	4,627	96	44,408	44,394	100
GA	120,701	114,986	95	1,116,164	1,103,421	99
KY	26,696	27,318	102	247,804	253,079	102
LA	14,459	12,755	88	126,711	122,846	97
MD	30,592	30,293	99	280,799	289,327	103
MS	64,871	64,780	100	613,245	620,199	101
NC	67,887	66,690	98	628,852	631,030	100
OK	25,126	24,833	99	226,937	219,080	97
PA	14,704	14,303	97	126,784	136,917	108
SC	19,029	19,424	102	175,400	176,502	101
TX	52,932	54,662	103	487,080	507,405	104
VA	22,602	22,436	99	206,694	204,225	99
CA, MO, TN, & WV	68,965	66,474	96	642,536	643,482	100
19 Sts ¹	759,581	732,783	96	6,986,914	6,988,421	100
Oth Sts ²	22,571	23,782	105	211,710	227,687	108
US	782,152	756,565	97	7,198,624	7,216,108	100

¹ States in the weekly hatchery production estimating program.

² Not published separately to avoid disclosing data for individual operations.

Broiler-Type Chicks Hatched: By Month, United States, 2007-08

Month	By Months			Cumulative		
	2007	2008	2008 as % of 2007	2007	2008	2008 as % of 2007
	<i>1,000</i>	<i>1,000</i>	<i>Percent</i>	<i>1,000</i>	<i>1,000</i>	<i>Percent</i>
Jan	796,133	821,866	103	796,133	821,866	103
Feb	722,016	771,197	107	1,518,149	1,593,063	105
Mar	809,346	832,899	103	2,327,495	2,425,962	104
Apr	799,293	797,481	100	3,126,788	3,223,443	103
May	835,773	823,718	99	3,962,561	4,047,161	102
Jun	808,329	806,202	100	4,770,890	4,853,363	102
Jul	818,983	806,555	98	5,589,873	5,659,918	101
Aug	826,599	799,625	97	6,416,472	6,459,543	101
Sep	782,152	756,565	97	7,198,624	7,216,108	100
Oct	794,846			7,993,470		
Nov	760,033			8,753,503		
Dec	821,281			9,574,784		

**Intended Placements: Broiler-Type Pullet Chicks for Hatchery
Supply Flocks by Month and Total, 2007-08 ¹**

Month	Pullet Chicks Hatched		2008 as % of 2007	Cumulative Potential Plcmts Relative to Current Supply Flocks 7-15 Months Earlier ²	
	2007	2008		2008	2009
	<i>1,000</i>	<i>1,000</i>	<i>Percent</i>	<i>1,000</i>	<i>1,000</i>
US Place- ments					
Jan	7,015	7,012	100	65,333	66,073
Feb	7,071	7,536	107	65,223	65,867
Mar	7,135	7,090	99	65,397	65,958
Apr	6,692	6,867	103	65,567	65,596
May	8,083	8,217	102	65,522	
Jun	7,799	7,527	97	66,057	
Jul	6,634	6,764	102	66,170	
Aug ³	7,792	7,697	99	66,490	
Sep	7,346	6,886	94	65,943	
Oct	6,970			65,234	
Nov	7,606			65,467	
Dec	7,248			65,892	
Annual Total	87,391				
Total Place- ments ⁴					
Jan	8,772	8,706	99		
Feb	8,811	9,498	108		
Mar	9,025	9,245	102		
Apr	8,358	8,676	104		
May	9,780	10,089	103		
Jun	9,435	9,339	99		
Jul	8,037	8,319	104		
Aug ⁵	9,466	9,603	101		
Sep	8,994	8,651	96		
Oct	9,076				
Nov	9,204				
Dec	9,043				
Annual Total	108,001				

¹ Reported by leading breeders. Coverage may not be 100 percent. Includes expected pullet chicks from eggs sold during the preceding month at the rate of 125 pullet chicks per 30 dozen case of eggs.

² For Sep 2008, includes breeder pullet chicks hatched Jun 2007 through Feb 2008.

³ Revised 2008 pullet chicks hatched and cumulative placements for March 2009.

⁴ U.S. production of intended placements worldwide.

⁵ Revised 2008 only.

Reliability of Chickens and Eggs Estimates

Survey Procedures: Primary data for the "**Chickens and Eggs**" report are from weekly and/or monthly questionnaires sent to producers. An attempt is made to collect information for layer and egg estimates from each known contractor and independent producer who has at least 30,000 table egg layers, flocks of hatchery supply layers, or pullet only operations with at least 500 pullets. Coverage for operations with less than 30,000 table egg layers are estimated each month based on data reported in December. Approximately 650 contractors, independent egg producers, and pullet only operations are contacted each month. All known hatcheries, approximately 300, are contacted for information on a weekly and/or monthly basis.

Estimating Procedures: Sound statistical methodology is employed to derive estimates from the reported data. All data are analyzed for unusual values. Data from each operation are compared to their own past operating profile and to trends from similar operations. Data for missing operations are estimated based on similar operations or historical data. NASS field offices prepare these estimates by using a combination of survey indications and historic trends. Individual State estimates are reviewed by the Agricultural Statistics Board for reasonableness. Individual hatchery data are summed to State, regional, and U.S. totals.

For chicken hatcheries, chicks hatched consist of all chicks of domesticated breeds including males and chicks destined for hatchery supply flocks and research purposes. Eggs set are eggs in incubators for the purpose of hatching. The relationship of egg-type chicks hatched to chicken inventory and poultry marketings are carefully monitored. The disposition of egg-type chicks hatched prior to placement into the laying flock can vary significantly, which can make comparisons to changes in layer inventory inconsistent over time. Broiler chicks placed are specifically placed on feed for meat production. Intended placement data reported by leading breeders include pullet chicks expected from eggs sold the preceding month. The breeders in this report account for a large percentage of replacement pullets for hatchery supply flocks. Production of replacement pullets by these breeders indicates the number of pullets available to hatchery supply layer flocks several months before the pullets will actually move into the laying flocks. "Hatchery Supply Flocks" include all generations of layers which could lay eggs to supply a hatchery. This includes the generations of parents, grandparents, great-grandparents, pedigree, etc. Also included are research flocks, vaccine flocks, and specific pathogen-free flocks. The broiler cumulative potential placements are a moving total of the intended placements 7-15 months earlier. The egg-type cumulative potential placements of 7-18 months earlier represent the first laying cycle. Molting and additional laying cycles will increase the cumulative potential placements of egg-type hatching flocks.

Revision Policy: The previous month's estimates are subject to revision if late reports or corrected data indicates a different level. Additionally, revisions after the monthly report will be made at the end of the marketing year and published in the annual reports of "**Chickens and Eggs Summary**" and "**Hatchery Production**".

Reliability: Estimates are based on a census of all known contractors and independent producers who have at least 30,000 table egg layers, flocks of hatchery supply layers, pullet only operations with at least 500 pullets, or operating hatcheries and therefore, have no sampling error. However, estimates are subject to errors such as omission, duplication, and mistakes in reporting, recording, and processing the data. While these errors cannot be measured directly, they are minimized through strict quality controls in the data collection process and a careful review of all reported data for consistency and reasonableness.

To assist in evaluating the reliability of the estimates in this report, the "Root Mean Square Error" is shown for selected items in the following table. The "Root Mean Square Error" is a statistical measure based on past performance and is computed using the differences between first and final estimates. The "Root Mean Square Error" for all layers over the past 24 months is 0.7 percent. This means that chances are 2 out of 3 that the final estimate will not be above or below the current estimate of 333 million layers by more than 0.7 percent. Chances are 9 out of 10 that the difference will not exceed 1.2 percent.

Reliability of Layer and Egg Estimates ¹

Item	Root Mean Square Error	90 Percent Confidence Level		Difference Between First and Latest Estimates			Number of Years	
				Average	Smallest	Largest	First Above Latest	First Below Latest
All Layers	<i>Percent</i> 0.7	<i>Percent</i> 1.2	<i>1,000</i> 41	<i>1,000</i> 1,172	<i>1,000</i> 44	<i>1,000</i> 3,157	<i>Number</i> 4	<i>Number</i> 20
Eggs	0.4	0.8	<i>Million Eggs</i> 1	<i>Million Eggs</i> 26	<i>Million Eggs</i> 2	<i>Million Eggs</i> 65	6	18

¹ Based on data for the past 24 months.

Regional Listing

North Atlantic: CT, ME, MA, NH, NJ, NY, PA, RI, VT.

East North Central: IL, IN, MI, OH, WI.

West North Central: IA, KS, MN, MO, NE, ND, SD.

South Atlantic: DE, FL, GA, MD, NC, SC, VA, WV.

South Central: AL, AR, KY, LA, MS, OK, TN, TX.

West: AK, AZ, CA, CO, HI, ID, MT, NM, NV, OR, UT, WA, WY.

Information Contacts

Listed below are the commodity specialists in the Livestock Branch of the National Agricultural Statistics Service to contact for additional information.

Dan Kerestes, Chief, Livestock Branch (202) 720-3570

Bruce Boess, Head, Poultry and Specialty Commodities Section..... (202) 720-4447

 David Colwell - Cold Storage (202) 720-8784

 Fleming Gibson - Poultry Slaughter, Turkey Hatchery, Turkeys Raised..... (202) 690-3237

 Sharyn Lavender - Broiler Hatchery, Chicken Hatchery, Honey (202) 720-3244

 Kim Linonis - Layers, Eggs (202) 690-8632

 Toby Paterson - Catfish Processing, Catfish Production, Trout Production,
 Census of Aquaculture, Egg Products, Mink (202) 720-0585

ACCESS TO REPORTS!!

For your convenience, there are several ways to obtain NASS reports, data products, and services:

INTERNET ACCESS

All NASS reports are available free of charge on the worldwide Internet. For access, connect to the Internet and go to the NASS Home Page at: www.nass.usda.gov.

E-MAIL SUBSCRIPTION

All NASS reports are available by subscription free of charge direct to your e-mail address. Starting with the NASS Home Page at www.nass.usda.gov, under the right navigation, *Receive reports by Email*, click on **National** or **State**. Follow the instructions on the screen.

PRINTED REPORTS OR DATA PRODUCTS

CALL OUR TOLL-FREE ORDER DESK: 800-999-6779 (U.S. and Canada)
Other areas, please call 703-605-6220 FAX: 703-605-6900
(Visa, MasterCard, check, or money order acceptable for payment.)

ASSISTANCE

For **assistance** with general agricultural statistics or further information about NASS or its products or services, contact the **Agricultural Statistics Hotline** at **800-727-9540**, 7:30 a.m. to 4:00 p.m. ET, or e-mail: nass@nass.usda.gov.

The U.S. Department of Agriculture (USDA) prohibits discrimination in all its programs and activities on the basis of race, color, national origin, age, disability, and where applicable, sex, marital status, familial status, parental status, religion, sexual orientation, genetic information, political beliefs, reprisal, or because all or a part of an individual's income is derived from any public assistance program. (Not all prohibited bases apply to all programs.) Persons with disabilities who require alternative means for communication of program information (Braille, large print, audiotape, etc.) should contact USDA's TARGET Center at (202) 720-2600 (voice and TDD).

To file a complaint of discrimination, write to USDA, Director, Office of Civil Rights, 1400 Independence Avenue, S.W., Washington, D.C. 20250-9410, or call (800) 795-3272 (voice) or (202) 720-6382 (TDD). USDA is an equal opportunity provider and employer.