

# Chickens and Eggs

---

Released November 21, 2008, by the National Agricultural Statistics Service (NASS), Agricultural Statistics Board, U.S. Department of Agriculture. For information on "Layers and Eggs" call Kim Linonis at (202) 690-8632, for "Chicks Hatched" call Sharyn Lavender at (202) 720-3244, office hours 7:30 a.m. to 4:00 p.m. ET.

## **October Egg Production Down 1 Percent**

U.S. egg production totaled 7.61 billion during October 2008, down 1 percent from last year. Production included 6.54 billion table eggs, and 1.08 billion hatching eggs, of which 1.01 billion were broiler-type and 69 million were egg-type. The total number of layers during October 2008 averaged 335 million, down 2 percent from last year. October egg production per 100 layers was 2,276 eggs, up 1 percent from October 2007.

All layers in the U.S. on November 1, 2008 totaled 336 million, down 2 percent from last year. The 336 million layers consisted of 280 million layers producing table or market type eggs, 53.3 million layers producing broiler-type hatching eggs, and 2.84 million layers producing egg-type hatching eggs. Rate of lay per day on November 1, 2008, averaged 73.4 eggs per 100 layers, up 1 percent from November 1, 2007.

## **Egg-Type Chicks Hatched Up 10 Percent**

Egg-type chicks hatched during October 2008 totaled 40.0 million, up 10 percent from October 2007. Eggs in incubators totaled 34.4 million on November 1, 2008, down slightly from a year ago.

Domestic placements of egg-type pullet chicks for future hatchery supply flocks by leading breeders totaled 273 thousand during October 2008, up 48 percent from October 2007.

## **Broiler-Type Chicks Hatched Down 7 Percent**

Broiler-type chicks hatched during October 2008 totaled 742 million, down 7 percent from October 2007. Eggs in incubators totaled 585 million on November 1, 2008, down 7 percent from a year earlier.

Leading breeders placed 6.84 million broiler-type pullet chicks for future domestic hatchery supply flocks during October 2008, down 2 percent from October 2007.



## Contents

	<b>Page</b>
U.S. Average Number of Layers on Hand and Egg Production.....	1
U.S. Layers on Hand and Eggs Produced by Type, Forced Molt, and Pullets .....	3
Layers on Hand and Eggs Produced by State.....	5
Egg Production by Type and State .....	7
Forced Molt .....	9
U.S. Hatchery Production Summary .....	10
Egg-Type Hatchery .....	11
Egg-Type Intended Placements .....	12
Broiler-Type Hatchery .....	12
Broiler-Type Intended Placements .....	14
Reliability of Chickens and Eggs Estimates.....	15
Regional Listing .....	16
Information Contacts.....	16

**All Layers: Average Number on Hand During the Month,  
United States, 2006-08**

Month	2006	2007	2008
	<i>1,000 Layers</i>	<i>1,000 Layers</i>	<i>1,000 Layers</i>
Dec <sup>1</sup>	349,699	349,862	344,965
Jan	351,313	348,897	344,791
Feb	351,754	348,843	343,129
Mar	352,116	348,201	341,906
Apr	350,398	345,578	341,203
May	347,069	342,469	340,259
Jun	344,631	340,237	338,612
Jul	343,285	340,035	336,191
Aug	343,611	340,651	335,171
Sep	345,217	340,984	334,374
Oct	346,608	342,637	334,560
Nov	348,853	344,229	

<sup>1</sup> December preceding year.

**Eggs: Production During the Month by Type,  
United States, 2007-08 <sup>1</sup>**

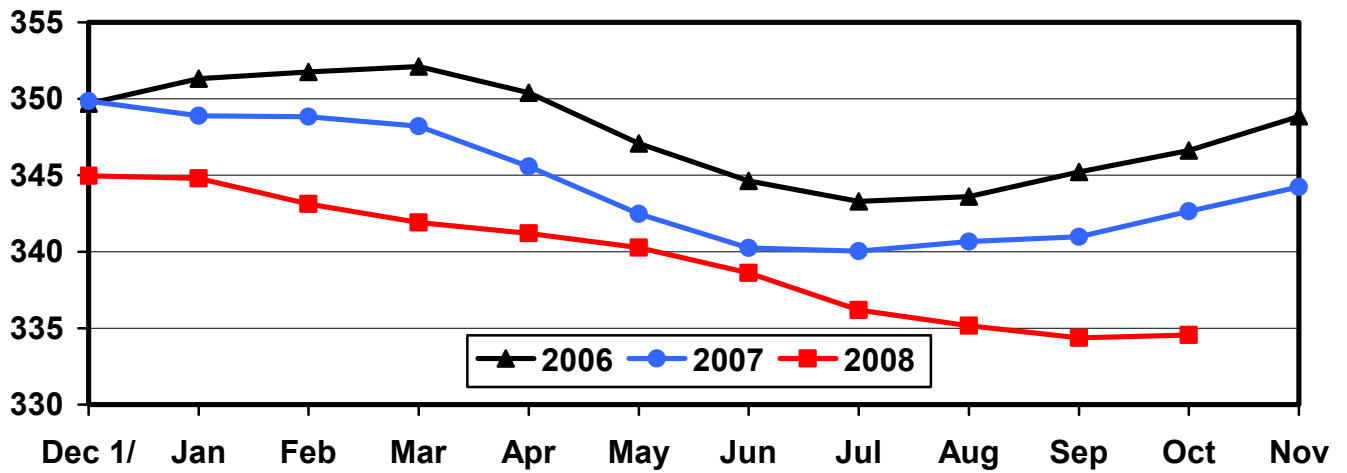
Month	Total Eggs		Table Eggs		Hatching Eggs	
	2007	2008	2007	2008	2007	2008
	<i>Million Eggs</i>	<i>Million Eggs</i>	<i>Million Eggs</i>	<i>Million Eggs</i>	<i>Million Eggs</i>	<i>Million Eggs</i>
Dec <sup>2</sup>	7,815	7,784	6,709	6,654	1,106	1,129
Jan	7,675	7,647	6,561	6,508	1,114	1,139
Feb	6,951	7,113	5,943	6,042	1,008	1,071
Mar	7,806	7,673	6,672	6,525	1,134	1,148
Apr	7,472	7,381	6,367	6,275	1,105	1,106
May	7,622	7,571	6,475	6,426	1,148	1,145
Jun	7,380	7,370	6,268	6,275	1,113	1,094
Jul	7,599	7,599	6,461	6,484	1,138	1,115
Aug	7,594	7,549	6,463	6,446	1,131	1,103
Sep	7,393	7,336	6,296	6,281	1,097	1,055
Oct	7,726	7,613	6,594	6,538	1,132	1,075
Nov	7,542		6,451		1,090	
During Year	90,581		77,266		13,317	

<sup>1</sup> Totals may not add due to rounding.

<sup>2</sup> December preceding year.

## U.S. Average Number of Layers During the Month

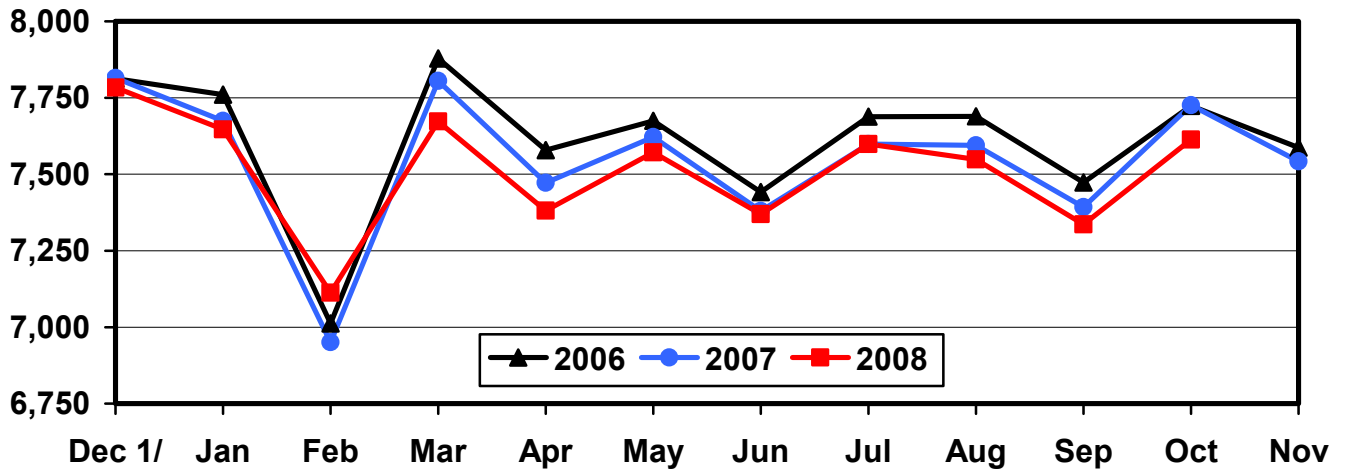
Million Layers



1/ Previous Year

## U.S. All Egg Production During the Month

Million Eggs



1/ Previous Year

**Layers and Eggs: Layers on Hand and Eggs Produced by Type,  
and Forced Molt, United States, September-October 2007-08 <sup>1</sup>**

Item	Unit	2007	2008 <sup>2</sup>	2008 as % of 2007
Layers During Sep	1,000			
All Layers		340,984	334,374	98
Table Egg Type		282,178	277,773	98
Hatching Egg Type		58,806	56,601	96
Broiler-Type Hatching		56,061	53,781	96
Egg-Type Hatching		2,745	2,820	103
Eggs per 100 Layers During Sep	Number			
All Layers		2,168	2,194	101
Table Egg Type		2,231	2,261	101
Hatching Egg Type		1,865	1,864	100
Broiler-Type Hatching		1,843	1,841	100
Egg-Type Hatching		2,332	2,305	99
Eggs Produced During Sep	Million			
All Layers		7,393	7,336	99
Table Egg Type		6,296	6,281	100
Hatching Egg Type		1,097	1,055	96
Broiler-Type Hatching		1,033	990	96
Egg-Type Hatching		64	65	102
Layers on Oct 1	1,000			
All Layers		341,322	333,349	98
Table Egg Type		282,398	277,299	98
Hatching Egg Type		58,924	56,050	95
Broiler-Type Hatching		56,169	53,153	95
Egg-Type Hatching		2,755	2,897	105
Eggs per 100 Layers on Oct 1	Number			
All Layers		72.7	73.4	101
Table Egg Type		74.9	75.7	101
Hatching Egg Type		62.1	61.9	100
Broiler-Type Hatching		61.3	61.1	100
Egg-Type Hatching		78.9	76.1	96
Forced Molt Layers on Oct 1	Percent			
Percent Being Molted		3.5	3.7	106
Percent with Molt Completed		23.7	21.9	92
Layers Sold for Slaughter During Sep	1,000	12,956	13,907	107
Layers Rendered, Died, Destroyed, Composted or Disappeared For Any Reason During Sep	1,000	6,716	7,224	108
Pullets on Oct 1	1,000	100,646	101,239	101
Pullets Added During Sep <sup>3</sup>	1,000	22,712	20,520	90

<sup>1</sup> Totals may not add due to rounding.

<sup>2</sup> Revised.

<sup>3</sup> Pullet chicks less than 3 days old added to pullet flocks.

**Layers and Eggs: Layers on Hand and Eggs Produced by Type,  
and Forced Molt, United States, October-November 2007-08<sup>1</sup>**

Item	Unit	2007	2008	2008 as % of 2007
Layers During Oct	1,000			
All Layers		342,637	334,560	98
Table Egg Type		283,749	278,454	98
Hatching Egg Type		58,888	56,106	95
Broiler-Type Hatching		56,073	53,236	95
Egg-Type Hatching		2,815	2,870	102
Eggs per 100 Layers During Oct	Number			
All Layers		2,255	2,276	101
Table Egg Type		2,324	2,348	101
Hatching Egg Type		1,922	1,916	100
Broiler-Type Hatching		1,899	1,890	100
Egg-Type Hatching		2,380	2,404	101
Eggs Produced During Oct	Million			
All Layers		7,726	7,613	99
Table Egg Type		6,594	6,538	99
Hatching Egg Type		1,132	1,075	95
Broiler-Type Hatching		1,065	1,006	94
Egg-Type Hatching		67	69	103
Layers on Nov 1	1,000			
All Layers		343,909	335,728	98
Table Egg Type		285,080	279,585	98
Hatching Egg Type		58,829	56,143	95
Broiler-Type Hatching		55,964	53,305	95
Egg-Type Hatching		2,865	2,838	99
Eggs per 100 Layers on Nov 1	Number			
All Layers		72.7	73.4	101
Table Egg Type		74.9	75.7	101
Hatching Egg Type		61.7	61.7	100
Broiler-Type Hatching		60.9	60.8	100
Egg-Type Hatching		75.9	79.0	104
Forced Molt Layers on Nov 1	Percent			
Percent Being Molted		2.6	2.3	88
Percent with Molt Completed		24.0	22.9	95
Layers Sold for Slaughter During Oct	1,000	12,070	13,730	114
Layers Rendered, Died, Destroyed, Composted or Disappeared For Any Reason During Oct	1,000	6,403	6,458	101
Pullets on Nov 1	1,000	99,255	100,098	101
Pullets Added During Oct <sup>2</sup>	1,000	20,307	22,138	109

<sup>1</sup> Totals may not add due to rounding.

<sup>2</sup> Pullet chicks less than 3 days old added to pullet flocks.

**Layers and Eggs: Layers on Hand and Eggs Produced by State  
and United States, During September 2007-08**

State	Table Egg Layers in Flocks 30,000 and Above		All Layers <sup>1</sup>		Eggs per 100 for All Layers <sup>1</sup>	
	2007	2008	2007	2008	2007	2008
	<i>1,000</i>	<i>1,000</i>	<i>1,000</i>	<i>1,000</i>	<i>Number</i>	<i>Number</i>
AL	1,182	1,398	9,082	9,332	1,861	1,886
AR	4,241	3,727	13,900	13,125	1,928	2,004
CA	18,716	19,395	18,945	19,613	2,117	2,177
CO	3,213	3,155	3,755	3,667	2,210	2,400
CT	2,824	2,866	2,879	2,921	2,327	2,191
FL	10,160	9,563	10,656	9,930	2,187	2,105
GA	9,433	9,278	19,198	18,178	2,016	2,002
HI	350	309	366	330	1,749	1,758
IL	4,891	5,183	5,115	5,395	2,268	2,187
IN	24,055	23,093	24,722	23,791	2,205	2,215
IA	51,405	52,270	52,346	53,214	2,222	2,208
ME	3,743	3,602	3,822	3,678	2,093	2,202
MD	2,626	2,262	2,759	2,396	2,066	2,295
MI	8,539	9,034	8,789	9,241	2,355	2,402
MN	9,870	9,271	10,334	9,726	2,235	2,313
MS	1,519	1,466	6,230	6,171	1,958	1,993
MO	5,646	5,318	6,821	6,429	2,184	2,318
NE	10,526	9,697	10,601	9,772	2,302	2,425
NY	3,688	3,787	3,902	3,997	2,358	2,452
NC	4,731	4,840	12,324	12,060	2,053	2,015
OH	25,479	25,424	26,055	26,021	2,226	2,275
OR	2,327	2,406	2,490	2,591	2,490	2,431
PA	20,397	20,449	22,090	21,856	2,313	2,343
SC	3,395	3,050	4,696	4,342	2,044	2,050
SD	3,098	2,466	3,198	2,491	2,189	2,288
TX	14,219	13,853	18,850	18,612	2,101	2,165
VA	1,392	1,257	3,257	2,968	2,026	1,988
WA	5,485	5,580	5,546	5,641	2,146	2,269
WI	4,376	3,979	4,941	4,532	2,287	2,229
Oth Sts <sup>2</sup>	15,125	14,446	23,315	22,354	2,175	2,156
US	276,651	272,424	340,984	334,374	2,168	2,194

<sup>1</sup> Includes all layers and eggs produced in both table egg and hatching egg flocks regardless of size.

<sup>2</sup> Not published separately to avoid disclosing data for individual operations.



**Layers and Eggs: Layers on Hand and Eggs Produced by State  
and United States, During October 2007-08**

State	Table Egg Layers in Flocks 30,000 and Above		All Layers <sup>1</sup>		Eggs per 100 for All Layers <sup>1</sup>	
	2007	2008	2007	2008	2007	2008
	<i>1,000</i>	<i>1,000</i>	<i>1,000</i>	<i>1,000</i>	<i>Number</i>	<i>Number</i>
AL	1,277	1,387	9,352	9,312	1,946	1,944
AR	4,125	3,663	13,932	12,854	1,974	2,069
CA	18,659	19,229	18,853	19,446	2,207	2,232
CO	3,291	3,242	3,830	3,726	2,376	2,442
CT	2,849	2,712	2,904	2,766	2,342	2,278
FL	10,312	9,639	10,783	10,005	2,272	2,229
GA	9,548	9,324	19,252	18,184	2,130	2,123
HI	349	308	365	333	1,836	1,742
IL	4,941	5,303	5,169	5,510	2,515	2,323
IN	24,233	23,064	24,908	23,802	2,308	2,281
IA	51,751	51,948	52,686	52,897	2,264	2,331
ME	3,797	3,563	3,876	3,638	2,141	2,281
MD	2,615	2,141	2,758	2,292	2,357	2,269
MI	8,700	9,198	8,950	9,398	2,536	2,490
MN	9,877	9,453	10,364	9,915	2,325	2,380
MS	1,532	1,534	6,232	6,280	2,038	2,054
MO	5,650	5,482	6,781	6,591	2,301	2,276
NE	10,254	9,495	10,329	9,570	2,372	2,445
NY	3,723	3,801	3,936	4,015	2,439	2,516
NC	4,915	4,853	12,467	11,980	2,134	2,087
OH	25,612	25,979	26,204	26,567	2,274	2,326
OR	2,430	2,191	2,601	2,368	2,461	2,618
PA	20,275	20,330	21,973	21,747	2,421	2,451
SC	3,439	3,070	4,697	4,367	2,193	2,107
SD	3,095	2,463	3,195	2,488	2,285	2,452
TX	14,501	14,149	19,130	18,851	2,253	2,297
VA	1,424	1,314	3,312	2,945	2,053	2,003
WA	5,496	5,791	5,557	5,852	2,267	2,341
WI	4,371	4,117	4,955	4,671	2,301	2,291
Oth Sts <sup>2</sup>	15,181	14,358	23,286	22,190	2,237	2,199
US	278,222	273,101	342,637	334,560	2,255	2,276

<sup>1</sup> Includes all layers and eggs produced in both table egg and hatching egg flocks regardless of size.

<sup>2</sup> Not published separately to avoid disclosing data for individual operations.

**Egg Production: By Type, State, and United States,  
September 2007-08 <sup>1</sup>**

State	Total Production		Table Eggs <sup>2</sup>		Hatching Eggs <sup>2</sup>	
	2007	2008	2007	2008	2007	2008
	<i>Million Eggs</i>	<i>Million Eggs</i>	<i>Million Eggs</i>	<i>Million Eggs</i>	<i>Million Eggs</i>	<i>Million Eggs</i>
AL	169	176	26	33	143	143
AR	268	263	97	92	171	171
CA	401	427				
CO	83	88				
CT	67	64				
FL	233	209	224	203	9	6
GA	387	364	203	199	184	165
HI	6.4	5.8	6.4	5.8	0	0
IL	116	118	113	115	3	3
IN	545	527	533	515	12	12
IA	1,163	1,175	1,148	1,159	15	16
ME	80	81				
MD	57	55	55	53	2	2
MI	207	222				
MN	231	225	223	217	8	8
MS	122	123	36	35	86	88
MO	149	149				
NE	244	237	244	237	0	0
NY	92	98				
NC	253	243	113	114	140	129
OH	580	592				
OR	62	63	60	61	2	2
PA	511	512	492	492	19	20
SC	96	89	74	68	22	21
SD	70	57	70	57	0	0
TX	396	403				
VA	66	59	32	29	34	30
WA	119	128				
WI	113	101				
Oth Sts <sup>3</sup>	507	482	377	359	130	123
US	7,393	7,336	6,296	6,281	1,097	1,055

<sup>1</sup> Totals may not add due to rounding.

<sup>2</sup> Data by type of flock not shown for some States to avoid disclosing individual operations, data included in US totals.

<sup>3</sup> Not published separately to avoid disclosing data for individual operations.

**Egg Production: By Type, State, and United States,  
October 2007-08<sup>1</sup>**

State	Total Production		Table Eggs <sup>2</sup>		Hatching Eggs <sup>2</sup>	
	2007	2008	2007	2008	2007	2008
	<i>Million Eggs</i>	<i>Million Eggs</i>	<i>Million Eggs</i>	<i>Million Eggs</i>	<i>Million Eggs</i>	<i>Million Eggs</i>
AL	182	181	31	34	151	147
AR	275	266	97	92	178	174
CA	416	434				
CO	91	91				
CT	68	63				
FL	245	223	236	217	9	6
GA	410	386	221	215	189	171
HI	6.7	5.8	6.7	5.8	0	0
IL	130	128	126	125	4	3
IN	575	543	563	530	12	13
IA	1,193	1,233	1,177	1,216	16	17
ME	83	83				
MD	65	52	63	50	2	2
MI	227	234				
MN	241	236	232	228	9	8
MS	127	129	38	38	89	91
MO	156	150				
NE	245	234	245	234	0	0
NY	96	101				
NC	266	250	124	121	142	129
OH	596	618				
OR	64	62	62	60	2	2
PA	532	533	513	513	19	20
SC	103	92	80	69	23	23
SD	73	61	73	61	0	0
TX	431	433				
VA	68	59	33	29	35	30
WA	126	137				
WI	114	107				
Oth Sts <sup>3</sup>	521	488	388	366	133	122
US	7,726	7,613	6,594	6,538	1,132	1,075

<sup>1</sup> Totals may not add due to rounding.

<sup>2</sup> Data by type of flock not shown for some States to avoid disclosing individual operations, data included in US totals.

<sup>3</sup> Not published separately to avoid disclosing data for individual operations.

**Forced Molt: Percent of All Layers by Month,  
United States, 2007-08 <sup>1</sup>**

Month	Percent Being Molted		Percent with Molt Completed	
	2007	2008	2007	2008
	<i>Percent</i>	<i>Percent</i>	<i>Percent</i>	<i>Percent</i>
Jan	4.4	2.8	24.5	22.8
Feb	3.4	3.9	24.4	21.7
Mar	2.9	2.0	24.2	22.2
Apr	2.8	2.7	23.5	21.2
May	5.4	4.0	22.2	20.5
Jun	3.6	3.6	24.1	20.7
Jul	4.0	3.3	24.2	20.9
Aug	3.4	3.9	23.6	21.1
Sep	3.5	3.9	24.1	20.9
Oct <sup>2</sup>	3.5	3.7	23.7	21.9
Nov	2.6	2.3	24.0	22.9
Dec	1.8		23.9	

<sup>1</sup> As of first of month.

<sup>2</sup> Revised 2008 only.

**Forced Molt: Percent of All Layers by State  
and United States, November 2007-08 <sup>1</sup>**

State	Percent Being Molted		Percent with Molt Completed	
	2007	2008	2007	2008
	<i>Percent</i>	<i>Percent</i>	<i>Percent</i>	<i>Percent</i>
AL	0.5	1.5	6.0	5.5
AR	1.0	1.0	12.5	9.5
CA	4.0	2.0	32.0	35.5
CO	4.0	1.0	21.0	15.5
CT	6.0	0.0	10.0	20.0
FL	2.5	4.0	38.5	37.5
GA	1.5	0.0	16.0	13.5
HI	9.0	12.0	56.5	55.0
IL	2.5	1.5	39.0	32.0
IN	2.0	3.5	33.5	35.0
IA	4.0	4.0	37.0	36.0
ME	0.0	0.0	0.0	0.0
MD	4.5	6.5	18.5	11.0
MI	0.5	1.0	15.5	21.5
MN	1.0	2.5	30.0	25.5
MS	1.0	1.0	10.0	11.0
MO	6.5	3.0	12.5	8.0
NE	0.0	0.0	15.0	3.5
NY	3.5	2.5	7.0	5.5
NC	0.0	0.0	8.0	11.0
OH	2.5	4.0	18.0	17.0
OR	3.5	2.5	34.0	35.5
PA	2.5	1.0	13.0	13.0
SC	6.0	0.0	27.0	20.0
SD	5.0	2.5	19.0	32.5
TX	0.5	0.5	29.0	28.0
VA	2.5	0.0	23.5	17.5
WA	8.0	6.5	40.5	28.0
WI	8.5	3.0	34.5	24.5
Oth Sts <sup>2</sup>	2.8	2.5	23.2	23.5
US	2.6	2.3	24.0	22.9

<sup>1</sup> As of first of month.

<sup>2</sup> Not published separately to avoid disclosing data for individual operations.

**Hatchery Production: Eggs in Incubators, Chicks Hatched,  
and Placements by Type, United States, October-November 2007-08**

Item	2007	2008	2008 as % of 2007
	<i>1,000</i>	<i>1,000</i>	<i>Percent</i>
Egg-Type			
Eggs in Incubators on Nov 1	34,466	34,424	100
Chicks Hatched During Oct	36,332	39,998	110
Chicks Hatched Jan thru Oct	374,011	394,232	105
Pullets Hatched During Oct for Intended Placements in Hatchery Supply Flocks	184	273	148
7-18 Months Earlier <sup>1</sup>	2,935	2,971	101
Broiler-Type			
Eggs in Incubators on Nov 1	632,225	585,025	93
Chicks Hatched During Oct	794,846	742,121	93
Chicks Hatched Jan thru Oct	7,993,470	7,958,229	100
Pullets Hatched During Oct for Intended Placements in Hatchery Supply Flocks	6,970	6,839	98
7-15 Months Earlier <sup>2</sup>	63,909	65,234	102

<sup>1</sup> 2008 includes pullet chicks hatched Apr 2007 through Mar 2008.

<sup>2</sup> 2008 includes pullet chicks hatched Jul 2007 through Mar 2008.

**Egg-Type Eggs in Incubators: By Region and United States,  
November 1, 2007-08**

Region <sup>1</sup>	2007	2008	2008 as % of 2007
	<i>1,000</i>	<i>1,000</i>	<i>Percent</i>
North Atlantic	5,536	5,053	91
E North Central	6,708	6,544	98
W North Central	8,635	8,486	98
South Atlantic	3,929	4,056	103
South Central	4,561	5,565	122
West	5,097	4,720	93
US	34,466	34,424	100

<sup>1</sup> Regional listing on page 16.

**Egg-Type Chicks Hatched: By State and United States,  
October 2007-08**

State	During October			Jan-Oct		
	2007	2008	2008 as % of 2007	2007	2008	2008 as % of 2007
	<i>1,000</i>	<i>1,000</i>	<i>Percent</i>	<i>1,000</i>	<i>1,000</i>	<i>Percent</i>
GA	2,151	2,290	106	22,185	21,452	97
IN	5,302	5,544	105	53,194	52,442	99
IA	6,748	7,601	113	73,608	76,267	104
MN	1,125	1,226	109	10,305	9,672	94
PA	3,715	5,274	142	45,412	50,852	112
Oth Sts <sup>1</sup>	17,291	18,063	104	169,307	183,547	108
US	36,332	39,998	110	374,011	394,232	105

<sup>1</sup> Not published separately to avoid disclosing data for individual operations.

**Egg-Type Chicks Hatched: By Month, United States, 2007-08**

Month	By Months			Cumulative		
	2007	2008	2008 as % of 2007	2007	2008	2008 as % of 2007
	<i>1,000</i>	<i>1,000</i>	<i>Percent</i>	<i>1,000</i>	<i>1,000</i>	<i>Percent</i>
Jan	36,195	40,167	111	36,195	40,167	111
Feb	36,739	37,549	102	72,934	77,716	107
Mar	38,561	39,547	103	111,495	117,263	105
Apr	39,254	41,051	105	150,749	158,314	105
May	38,080	42,724	112	188,829	201,038	106
Jun	40,641	42,538	105	229,470	243,576	106
Jul	35,952	37,929	105	265,422	281,505	106
Aug	36,930	36,301	98	302,352	317,806	105
Sep	35,327	36,428	103	337,679	354,234	105
Oct	36,332	39,998	110	374,011	394,232	105
Nov	36,232			410,243		
Dec	35,866			446,109		

**Intended Placements: Egg-Type Pullet Chicks for Hatchery Supply  
Flocks by Month and Total, United States, 2007-08<sup>1</sup>**

Month	Pullet Chicks Hatched		2008 as % of 2007	Cumulative Potential Plcmts Relative to Current Supply Flocks 7-18 Months Earlier <sup>2</sup>	
	2007	2008		2008	2009
	<i>1,000</i>	<i>1,000</i>	<i>Percent</i>	<i>1,000</i>	<i>1,000</i>
Jan	265	210	79	3,007	2,928
Feb	165	280	170	2,871	2,989
Mar	316	245	78	2,865	2,990
Apr	274	264	96	2,905	2,900
May	191	227	119	2,867	2,989
Jun	300	231	77	2,942	
Jul	183	244	133	2,982	
Aug	278	279	100	2,927	
Sep	300	210	70	3,042	
Oct	184	273	148	2,971	
Nov	281			2,961	
Dec	245			2,997	
Total	2,982				

<sup>1</sup> Reported by leading breeders. Coverage may not be 100 percent. Includes expected pullet chicks from eggs sold during the preceding month at the rate of 125 pullet chicks per 30 dozen case of eggs.

<sup>2</sup> For October 2008, includes breeder pullet chicks hatched Apr 2007 through Mar 2008. The 7-18 months represent the first laying cycle. Molting and additional laying cycles will increase the cumulative potential placements.

**Broiler-Type Eggs in Incubators: By Region  
and United States, November 1, 2007-08**

Region <sup>1</sup>	2007	2008	2008 as % of 2007
	<i>1,000</i>	<i>1,000</i>	<i>Percent</i>
North Atlantic	12,262	10,193	83
E North Central	11,969	11,028	92
W North Central	26,996	26,616	99
South Atlantic	237,891	217,591	91
South Central	318,846	296,360	93
West	24,261	23,237	96
US	632,225	585,025	93

<sup>1</sup> Regional listing on page 16.

**Broiler-Type Chicks Hatched: By State  
and United States, October 2007-08**

State	During October			Jan-Oct		
	2007	2008	2008 as % of 2007	2007	2008	2008 as % of 2007
	<i>1,000</i>	<i>1,000</i>	<i>Percent</i>	<i>1,000</i>	<i>1,000</i>	<i>Percent</i>
AL	114,562	104,855	92	1,128,298	1,135,072	101
AR	100,360	86,548	86	1,017,297	968,345	95
DE	15,035	11,810	79	147,862	136,310	92
FL	5,069	4,435	87	49,477	48,829	99
GA	121,892	113,259	93	1,238,056	1,216,680	98
KY	27,315	26,897	98	275,119	279,976	102
LA	14,693	12,353	84	141,404	135,199	96
MD	31,281	29,305	94	312,080	318,632	102
MS	65,744	63,338	96	678,989	683,537	101
NC	70,218	64,547	92	699,070	695,577	100
OK	25,812	25,810	100	252,749	244,890	97
PA	15,168	14,241	94	141,952	151,158	106
SC	19,853	18,998	96	195,253	195,500	100
TX	52,666	52,892	100	539,746	560,297	104
VA	22,498	22,050	98	229,192	226,275	99
CA, MO, TN, & WV	70,822	66,883	94	713,358	710,365	100
19 Sts <sup>1</sup>	772,988	718,221	93	7,759,902	7,706,642	99
Oth Sts <sup>2</sup>	21,858	23,900	109	233,568	251,587	108
US	794,846	742,121	93	7,993,470	7,958,229	100

<sup>1</sup> States in the weekly hatchery production estimating program.

<sup>2</sup> Not published separately to avoid disclosing data for individual operations.

**Broiler-Type Chicks Hatched: By Month, United States, 2007-08**

Month	By Months			Cumulative		
	2007	2008	2008 as % of 2007	2007	2008	2008 as % of 2007
	<i>1,000</i>	<i>1,000</i>	<i>Percent</i>	<i>1,000</i>	<i>1,000</i>	<i>Percent</i>
Jan	796,133	821,866	103	796,133	821,866	103
Feb	722,016	771,197	107	1,518,149	1,593,063	105
Mar	809,346	832,899	103	2,327,495	2,425,962	104
Apr	799,293	797,481	100	3,126,788	3,223,443	103
May	835,773	823,718	99	3,962,561	4,047,161	102
Jun	808,329	806,202	100	4,770,890	4,853,363	102
Jul	818,983	806,555	98	5,589,873	5,659,918	101
Aug	826,599	799,625	97	6,416,472	6,459,543	101
Sep	782,152	756,565	97	7,198,624	7,216,108	100
Oct	794,846	742,121	93	7,993,470	7,958,229	100
Nov	760,033			8,753,503		
Dec	821,281			9,574,784		



**Intended Placements: Broiler-Type Pullet Chicks for Hatchery  
Supply Flocks by Month and Total, 2007-08 <sup>1</sup>**

Month	Pullet Chicks Hatched		2008 as % of 2007	Cumulative Potential Plcmts Relative to Current Supply Flocks 7-15 Months Earlier <sup>2</sup>	
	2007	2008		2008	2009
	<i>1,000</i>	<i>1,000</i>	<i>Percent</i>	<i>1,000</i>	<i>1,000</i>
US Place- ments					
Jan	7,015	7,012	100	65,333	66,073
Feb	7,071	7,536	107	65,223	65,867
Mar	7,135	7,090	99	65,397	65,958
Apr	6,692	6,867	103	65,567	65,596
May	8,083	8,217	102	65,522	65,423
Jun	7,799	7,527	97	66,057	
Jul	6,634	6,764	102	66,170	
Aug	7,792	7,697	99	66,490	
Sep	7,346	6,886	94	65,943	
Oct	6,970	6,839	98	65,234	
Nov	7,606			65,467	
Dec	7,248			65,892	
Annual Total	87,391				
Total Place- ments <sup>3</sup>					
Jan	8,772	8,706	99		
Feb	8,811	9,498	108		
Mar	9,025	9,245	102		
Apr	8,358	8,676	104		
May	9,780	10,089	103		
Jun	9,435	9,339	99		
Jul	8,037	8,319	104		
Aug	9,466	9,603	101		
Sep	8,994	8,651	96		
Oct	9,076	8,350	92		
Nov	9,204				
Dec	9,043				
Annual Total	108,001				

<sup>1</sup> Reported by leading breeders. Coverage may not be 100 percent. Includes expected pullet chicks from eggs sold during the preceding month at the rate of 125 pullet chicks per 30 dozen case of eggs.

<sup>2</sup> For Oct 2008, includes breeder pullet chicks hatched Jul 2007 through Mar 2008.

<sup>3</sup> U.S. production of intended placements worldwide.

## Reliability of Chickens and Eggs Estimates

**Survey Procedures:** Primary data for the "Chickens and Eggs" report are from weekly and/or monthly questionnaires sent to producers. An attempt is made to collect information for layer and egg estimates from each known contractor and independent producer who has at least 30,000 table egg layers, flocks of hatchery supply layers, or pullet only operations with at least 500 pullets. Coverage for operations with less than 30,000 table egg layers are estimated each month based on data reported in December. Approximately 650 contractors, independent egg producers, and pullet only operations are contacted each month. All known hatcheries, approximately 300, are contacted for information on a weekly and/or monthly basis.

**Estimating Procedures:** Sound statistical methodology is employed to derive estimates from the reported data. All data are analyzed for unusual values. Data from each operation are compared to their own past operating profile and to trends from similar operations. Data for missing operations are estimated based on similar operations or historical data. NASS field offices prepare these estimates by using a combination of survey indications and historic trends. Individual State estimates are reviewed by the Agricultural Statistics Board for reasonableness. Individual hatchery data are summed to State, regional, and U.S. totals.

For chicken hatcheries, chicks hatched consist of all chicks of domesticated breeds including males and chicks destined for hatchery supply flocks and research purposes. Eggs set are eggs in incubators for the purpose of hatching. The relationship of egg-type chicks hatched to chicken inventory and poultry marketings are carefully monitored. The disposition of egg-type chicks hatched prior to placement into the laying flock can vary significantly, which can make comparisons to changes in layer inventory inconsistent over time. Broiler chicks placed are specifically placed on feed for meat production. Intended placement data reported by leading breeders include pullet chicks expected from eggs sold the preceding month. The breeders in this report account for a large percentage of replacement pullets for hatchery supply flocks. Production of replacement pullets by these breeders indicates the number of pullets available to hatchery supply layer flocks several months before the pullets will actually move into the laying flocks. "Hatchery Supply Flocks" include all generations of layers which could lay eggs to supply a hatchery. This includes the generations of parents, grandparents, great-grandparents, pedigree, etc. Also included are research flocks, vaccine flocks, and specific pathogen-free flocks. The broiler cumulative potential placements are a moving total of the intended placements 7-15 months earlier. The egg-type cumulative potential placements of 7-18 months earlier represent the first laying cycle. Molting and additional laying cycles will increase the cumulative potential placements of egg-type hatching flocks.

**Revision Policy:** The previous month's estimates are subject to revision if late reports or corrected data indicates a different level. Additionally, revisions after the monthly report will be made at the end of the marketing year and published in the annual reports of "Chickens and Eggs Summary" and "Hatchery Production".

**Reliability:** Estimates are based on a census of all known contractors and independent producers who have at least 30,000 table egg layers, flocks of hatchery supply layers, pullet only operations with at least 500 pullets, or operating hatcheries and therefore, have no sampling error. However, estimates are subject to errors such as omission, duplication, and mistakes in reporting, recording, and processing the data. While these errors cannot be measured directly, they are minimized through strict quality controls in the data collection process and a careful review of all reported data for consistency and reasonableness.

To assist in evaluating the reliability of the estimates in this report, the "Root Mean Square Error" is shown for selected items in the following table. The "Root Mean Square Error" is a statistical measure based on past performance and is computed using the differences between first and final estimates. The "Root Mean Square Error" for all layers over the past 24 months is 0.6 percent. This means that chances are 2 out of 3 that the final estimate will not be above or below the current estimate of 335 million layers by more than 0.6 percent. Chances are 9 out of 10 that the difference will not exceed 1.1 percent.

**Reliability of Layer and Egg Estimates <sup>1</sup>**

Item	Root Mean Square Error	90 Percent Confidence Level		Difference Between First and Latest Estimates			Number of Years	
				Average	Smallest	Largest	First Above Latest	First Below Latest
All Layers	<i>Percent</i> 0.6	<i>Percent</i> 1.1	<i>1,000</i> 38	<i>1,000</i> 1,056	<i>1,000</i> 0	<i>1,000</i> 3,157	<i>Number</i> 4	<i>Number</i> 19
Eggs	0.4	0.7	<i>Million Eggs</i> 1	<i>Million Eggs</i> 24	<i>Million Eggs</i> 0	<i>Million Eggs</i> 65	6	17

<sup>1</sup> Based on data for the past 24 months.

**Regional Listing**

North Atlantic: CT, ME, MA, NH, NJ, NY, PA, RI, VT.  
 East North Central: IL, IN, MI, OH, WI.  
 West North Central: IA, KS, MN, MO, NE, ND, SD.  
 South Atlantic: DE, FL, GA, MD, NC, SC, VA, WV.  
 South Central: AL, AR, KY, LA, MS, OK, TN, TX.  
 West: AK, AZ, CA, CO, HI, ID, MT, NM, NV, OR, UT, WA, WY.

**Information Contacts**

Listed below are the commodity specialists in the Livestock Branch of the National Agricultural Statistics Service to contact for additional information.

Dan Kerestes, Chief, Livestock Branch .....(202) 720-3570

Bruce Boess, Head, Poultry and Specialty Commodities Section.....(202) 720-4447

David Colwell - Cold Storage .....(202) 720-8784

Fleming Gibson - Poultry Slaughter, Turkey Hatchery, Turkeys Raised.....(202) 690-3237

Sharyn Lavender - Broiler Hatchery, Chicken Hatchery, Honey .....(202) 720-3244

Kim Linonis - Layers, Eggs .....(202) 690-8632

Toby Paterson - Catfish Processing, Catfish Production, Trout Production,  
 Census of Aquaculture, Egg Products, Mink.....(202) 720-0585

## ACCESS TO REPORTS!!

---

For your convenience, there are several ways to obtain NASS reports, data products, and services:

### INTERNET ACCESS

All NASS reports are available free of charge on the worldwide Internet. For access, connect to the Internet and go to the NASS Home Page at [www.nass.usda.gov](http://www.nass.usda.gov).

### E-MAIL SUBSCRIPTION

All NASS reports are available by subscription free of charge direct to your e-mail address. Starting with the NASS Home Page at [www.nass.usda.gov](http://www.nass.usda.gov), under the right navigation, *Receive reports by Email*, click on **National** or **State**. Follow the instructions on the screen.

-----

### PRINTED REPORTS OR DATA PRODUCTS

**CALL OUR TOLL-FREE ORDER DESK: 800-999-6779 (U.S. and Canada)**  
**Other areas, please call 703-605-6220      FAX: 703-605-6900**  
**(Visa, MasterCard, check, or money order acceptable for payment.)**

-----

### ASSISTANCE

For **assistance** with general agricultural statistics or further information about NASS or its products or services, contact the **Agricultural Statistics Hotline** at **800-727-9540**, 7:30 a.m. to 4:00 p.m. ET, or e-mail: [nass@nass.usda.gov](mailto:nass@nass.usda.gov).

The U.S. Department of Agriculture (USDA) prohibits discrimination in all its programs and activities on the basis of race, color, national origin, age, disability, and where applicable, sex, marital status, familial status, parental status, religion, sexual orientation, genetic information, political beliefs, reprisal, or because all or a part of an individual's income is derived from any public assistance program. (Not all prohibited bases apply to all programs.) Persons with disabilities who require alternative means for communication of program information (Braille, large print, audiotape, etc.) should contact USDA's TARGET Center at (202) 720-2600 (voice and TDD).

To file a complaint of discrimination, write to USDA, Director, Office of Civil Rights, 1400 Independence Avenue, S.W., Washington, D.C. 20250-9410, or call (800) 795-3272 (voice) or (202) 720-6382 (TDD). USDA is an equal opportunity provider and employer.