

Chickens and Eggs

Released December 22, 2008, by the National Agricultural Statistics Service (NASS), Agricultural Statistics Board, U.S. Department of Agriculture. For information on "Layers and Eggs" call Kim Linonis at (202) 690-8632, for "Chicks Hatched" call Sharyn Lavender at (202) 720-3244, office hours 7:30 a.m. to 4:00 p.m. ET.

November Egg Production Down Slightly

U.S. egg production totaled 7.51 billion during November 2008, down slightly from last year. Production included 6.47 billion table eggs, and 1.04 billion hatching eggs, of which 970 million were broiler-type and 71 million were egg-type. The total number of layers during November 2008 averaged 339 million, down 2 percent from last year. November egg production per 100 layers was 2,217 eggs, up 1 percent from November 2007.

All layers in the U.S. on December 1, 2008 totaled 341 million, down 1 percent from last year. The 341 million layers consisted of 285 million layers producing table or market type eggs, 52.4 million layers producing broiler-type hatching eggs, and 3.03 million layers producing egg-type hatching eggs. Rate of lay per day on December 1, 2008, averaged 74.2 eggs per 100 layers, up 1 percent from December 1, 2007.

Egg-Type Chicks Hatched Up 1 Percent

Egg-type chicks hatched during November 2008 totaled 36.6 million, up 1 percent from November 2007. Eggs in incubators totaled 34.8 million on December 1, 2008, down 3 percent from a year ago.

Domestic placements of egg-type pullet chicks for future hatchery supply flocks by leading breeders totaled 317 thousand during November 2008, up 13 percent from November 2007.

Broiler-Type Chicks Hatched Down 7 Percent

Broiler-type chicks hatched during November 2008 totaled 706 million, down 7 percent from November 2007. Eggs in incubators totaled 629 million on December 1, 2008, down 7 percent from a year earlier.

Leading breeders placed 7.22 million broiler-type pullet chicks for future domestic hatchery supply flocks during November 2008, down 5 percent from November 2007.

Contents

Page

U.S. Average Number of Layers on Hand and Egg Production.....	1
U.S. Layers on Hand and Eggs Produced by Type, Forced Molt, and Pullets.....	3
Layers on Hand and Eggs Produced by State.....	5
Egg Production by Type and State	7
Forced Molt	9
U.S. Hatchery Production Summary	10
Egg-Type Hatchery	11
Egg-Type Intended Placements	12
Broiler-Type Hatchery	12
Broiler-Type Intended Placements.....	14
Reliability of Chickens and Eggs Estimates.....	15
Regional Listing.....	16
Information Contacts.....	16

**All Layers: Average Number on Hand During the Month,
United States, 2006-08**

Month	2006	2007	2008
	<i>1,000 Layers</i>	<i>1,000 Layers</i>	<i>1,000 Layers</i>
Dec ¹	349,699	349,862	344,965
Jan	351,313	348,897	344,791
Feb	351,754	348,843	343,129
Mar	352,116	348,201	341,906
Apr	350,398	345,578	341,203
May	347,069	342,469	340,259
Jun	344,631	340,237	338,612
Jul	343,285	340,035	336,191
Aug	343,611	340,651	335,171
Sep	345,217	340,984	334,374
Oct ²	346,608	342,637	335,339
Nov	348,853	344,229	338,926

¹ December preceding year.

² Revised.

**Eggs: Production During the Month by Type,
United States, 2007-08 ¹**

Month	Total Eggs		Table Eggs		Hatching Eggs	
	2007	2008	2007	2008	2007	2008
	<i>Million Eggs</i>	<i>Million Eggs</i>	<i>Million Eggs</i>	<i>Million Eggs</i>	<i>Million Eggs</i>	<i>Million Eggs</i>
Dec ²	7,815	7,784	6,709	6,654	1,106	1,129
Jan	7,675	7,647	6,561	6,508	1,114	1,139
Feb	6,951	7,113	5,943	6,042	1,008	1,071
Mar	7,806	7,673	6,672	6,525	1,134	1,148
Apr	7,472	7,381	6,367	6,275	1,105	1,106
May	7,622	7,571	6,475	6,426	1,148	1,145
Jun	7,380	7,370	6,268	6,275	1,113	1,094
Jul	7,599	7,599	6,461	6,484	1,138	1,115
Aug	7,594	7,549	6,463	6,446	1,131	1,103
Sep	7,393	7,336	6,296	6,281	1,097	1,055
Oct ³	7,726	7,632	6,594	6,554	1,132	1,078
Nov	7,542	7,513	6,451	6,472	1,090	1,041
During Year	90,581	90,168	77,266	76,942	13,317	13,224

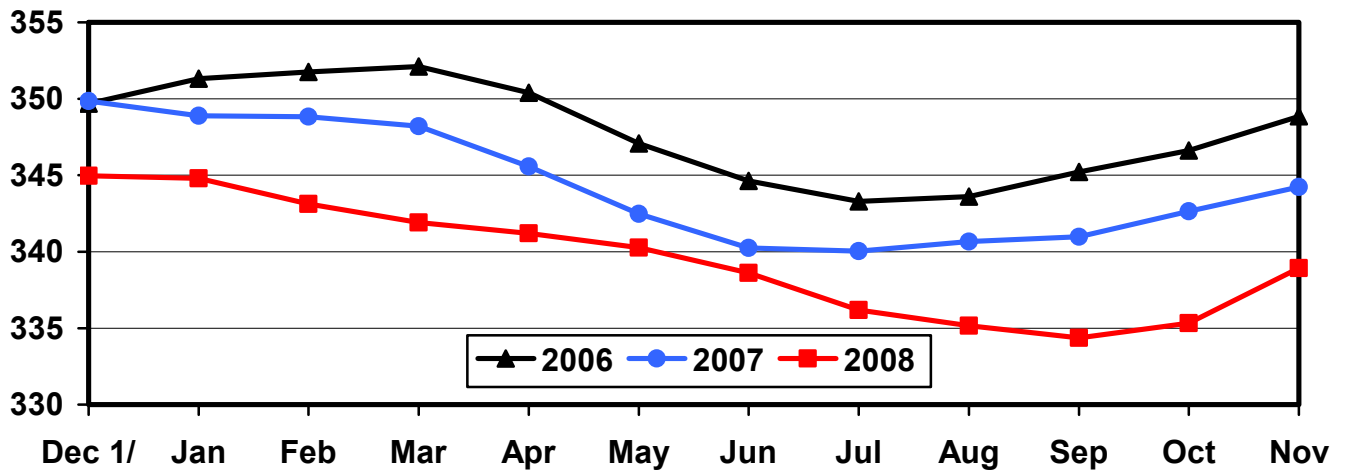
¹ Totals may not add due to rounding.

² December preceding year.

³ Revised.

U.S. Average Number of Layers During the Month

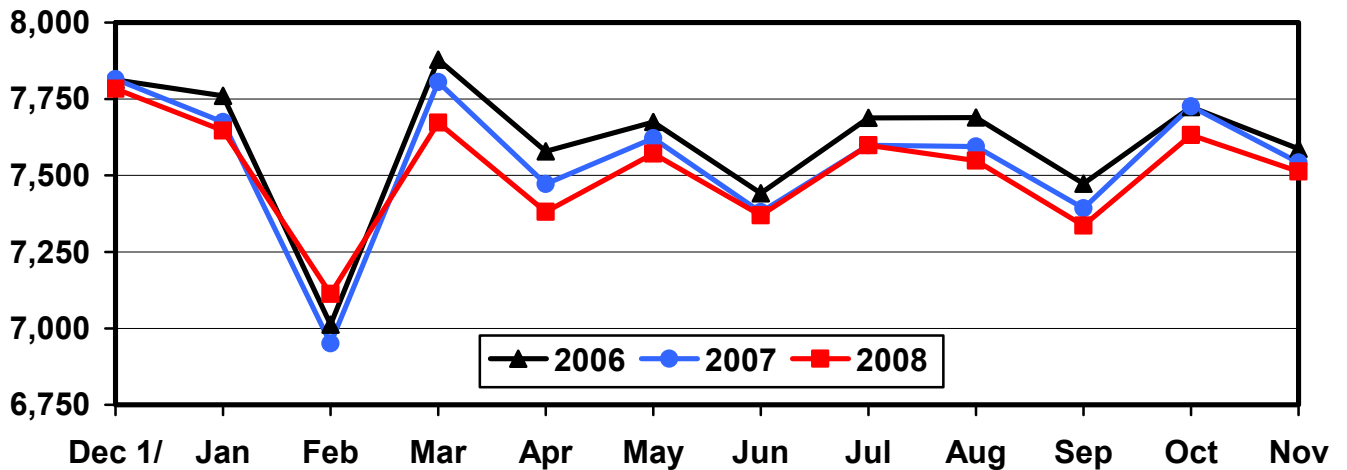
Million Layers



1/ Previous Year

U.S. All Egg Production During the Month

Million Eggs



1/ Previous Year

**Layers and Eggs: Layers on Hand and Eggs Produced by Type,
and Forced Molt, United States, October-November 2007-08 ¹**

Item	Unit	2007	2008 ²	2008 as % of 2007
Layers During Oct	1,000			
All Layers		342,637	335,339	98
Table Egg Type		283,749	279,102	98
Hatching Egg Type		58,888	56,237	95
Broiler-Type Hatching		56,073	53,239	95
Egg-Type Hatching		2,815	2,998	107
Eggs per 100 Layers During Oct	Number			
All Layers		2,255	2,276	101
Table Egg Type		2,324	2,348	101
Hatching Egg Type		1,922	1,917	100
Broiler-Type Hatching		1,899	1,890	100
Egg-Type Hatching		2,380	2,402	101
Eggs Produced During Oct	Million			
All Layers		7,726	7,632	99
Table Egg Type		6,594	6,554	99
Hatching Egg Type		1,132	1,078	95
Broiler-Type Hatching		1,065	1,006	94
Egg-Type Hatching		67	72	107
Layers on Nov 1	1,000			
All Layers		343,909	337,287	98
Table Egg Type		285,080	280,880	99
Hatching Egg Type		58,829	56,407	96
Broiler-Type Hatching		55,964	53,311	95
Egg-Type Hatching		2,865	3,096	108
Eggs per 100 Layers on Nov 1	Number			
All Layers		72.7	73.4	101
Table Egg Type		74.9	75.7	101
Hatching Egg Type		61.7	61.7	100
Broiler-Type Hatching		60.9	60.8	100
Egg-Type Hatching		75.9	78.3	103
Forced Molt Layers on Nov 1	Percent			
Percent Being Molted		2.6	2.0	77
Percent with Molt Completed		24.0	22.0	92
Layers Sold for Slaughter During Oct	1,000	12,070	13,767	114
Layers Rendered, Died, Destroyed, Composted or Disappeared For Any Reason During Oct	1,000	6,403	6,325	99
Pullets on Nov 1	1,000	99,255	101,219	102
Pullets Added During Oct ³	1,000	20,307	22,253	110

¹ Totals may not add due to rounding.

² Revised.

³ Pullet chicks less than 3 days old added to pullet flocks.

**Layers and Eggs: Layers on Hand and Eggs Produced by Type,
and Forced Molt, United States, November-December 2007-08¹**

Item	Unit	2007	2008	2008 as % of 2007
Layers During Nov	1,000			
All Layers		344,229	338,926	98
Table Egg Type		285,396	282,995	99
Hatching Egg Type		58,833	55,931	95
Broiler-Type Hatching		55,986	52,864	94
Egg-Type Hatching		2,847	3,067	108
Eggs per 100 Layers During Nov	Number			
All Layers		2,191	2,217	101
Table Egg Type		2,260	2,287	101
Hatching Egg Type		1,853	1,861	100
Broiler-Type Hatching		1,829	1,835	100
Egg-Type Hatching		2,318	2,315	100
Eggs Produced During Nov	Million			
All Layers		7,542	7,513	100
Table Egg Type		6,451	6,472	100
Hatching Egg Type		1,090	1,041	96
Broiler-Type Hatching		1,024	970	95
Egg-Type Hatching		66	71	108
Layers on Dec 1	1,000			
All Layers		344,492	340,527	99
Table Egg Type		285,677	285,091	100
Hatching Egg Type		58,815	55,436	94
Broiler-Type Hatching		55,995	52,405	94
Egg-Type Hatching		2,820	3,031	107
Eggs per 100 Layers on Dec 1	Number			
All Layers		73.2	74.2	101
Table Egg Type		75.5	76.6	101
Hatching Egg Type		61.7	61.9	100
Broiler-Type Hatching		60.8	61.1	100
Egg-Type Hatching		78.6	75.7	96
Forced Molt Layers on Dec 1	Percent			
Percent Being Molted		1.8	1.8	100
Percent with Molt Completed		23.9	21.4	90
Layers Sold for Slaughter During Nov	1,000	11,638	12,125	104
Layers Rendered, Died, Destroyed, Composted or Disappeared For Any Reason During Nov	1,000	5,652	5,600	99
Pullets on Dec 1	1,000	102,301	98,940	97
Pullets Added During Nov ²	1,000	21,730	20,253	93

¹ Totals may not add due to rounding.

² Pullet chicks less than 3 days old added to pullet flocks.

**Layers and Eggs: Layers on Hand and Eggs Produced by State
and United States, During October 2007-08**

State	Table Egg Layers in Flocks 30,000 and Above		All Layers ¹		Eggs per 100 for All Layers ¹	
	2007	2008 ²	2007	2008 ²	2007	2008 ²
	<i>1,000</i>	<i>1,000</i>	<i>1,000</i>	<i>1,000</i>	<i>Number</i>	<i>Number</i>
AL	1,277	1,387	9,352	9,312	1,946	1,944
AR	4,125	3,663	13,932	12,854	1,974	2,069
CA	18,659	19,544	18,853	19,890	2,207	2,232
CO	3,291	3,242	3,830	3,726	2,376	2,442
CT	2,849	2,712	2,904	2,766	2,342	2,278
FL	10,312	9,639	10,783	10,005	2,272	2,229
GA	9,548	9,324	19,252	18,184	2,130	2,123
HI	349	308	365	333	1,836	1,742
IL	4,941	5,303	5,169	5,510	2,515	2,323
IN	24,233	23,064	24,908	23,802	2,308	2,281
IA	51,751	52,132	52,686	53,081	2,264	2,332
ME	3,797	3,563	3,876	3,638	2,141	2,281
MD	2,615	2,141	2,758	2,292	2,357	2,269
MI	8,700	9,198	8,950	9,398	2,536	2,490
MN	9,877	9,453	10,364	9,915	2,325	2,380
MS	1,532	1,534	6,232	6,280	2,038	2,054
MO	5,650	5,482	6,781	6,591	2,301	2,276
NE	10,254	9,495	10,329	9,570	2,372	2,445
NY	3,723	3,801	3,936	4,015	2,439	2,516
NC	4,915	4,853	12,467	11,980	2,134	2,087
OH	25,612	25,979	26,204	26,567	2,274	2,326
OR	2,430	2,191	2,601	2,368	2,461	2,618
PA	20,275	20,330	21,973	21,747	2,421	2,451
SC	3,439	3,070	4,697	4,367	2,193	2,107
SD	3,095	2,463	3,195	2,488	2,285	2,452
TX	14,501	14,149	19,130	18,851	2,253	2,297
VA	1,424	1,314	3,312	2,945	2,053	2,003
WA	5,496	5,791	5,557	5,852	2,267	2,341
WI	4,371	4,117	4,955	4,671	2,301	2,291
Oth Sts ³	15,181	14,507	23,286	22,341	2,237	2,202
US	278,222	273,749	342,637	335,339	2,255	2,276

¹ Includes all layers and eggs produced in both table egg and hatching egg flocks regardless of size.

² Revised.

³ Not published separately to avoid disclosing data for individual operations.

**Layers and Eggs: Layers on Hand and Eggs Produced by State
and United States, During November 2007-08**

State	Table Egg Layers in Flocks 30,000 and Above		All Layers ¹		Eggs per 100 for All Layers ¹	
	2007	2008	2007	2008	2007	2008
	<i>1,000</i>	<i>1,000</i>	<i>1,000</i>	<i>1,000</i>	<i>Number</i>	<i>Number</i>
AL	1,367	1,381	9,476	9,370	1,889	1,889
AR	4,100	3,653	13,946	12,740	1,943	1,962
CA	19,097	20,057	19,281	20,534	2,152	2,196
CO	3,349	3,434	3,886	3,882	2,342	2,344
CT	2,846	2,700	2,903	2,753	2,308	2,252
FL	10,421	9,886	10,869	10,272	2,190	2,249
GA	9,589	9,503	19,306	18,263	2,082	2,092
HI	347	310	362	338	1,768	1,657
IL	4,927	5,319	5,156	5,531	2,347	2,350
IN	23,961	23,236	24,671	23,968	2,266	2,215
IA	52,548	52,278	53,452	53,170	2,153	2,263
ME	3,813	3,544	3,889	3,615	2,134	2,185
MD	2,653	2,193	2,814	2,360	2,168	2,119
MI	8,863	9,440	9,088	9,640	2,476	2,396
MN	9,894	9,542	10,371	10,016	2,295	2,266
MS	1,580	1,589	6,353	6,222	1,983	2,041
MO	5,655	5,647	6,762	6,728	2,144	2,185
NE	10,101	9,526	10,176	9,601	2,309	2,312
NY	3,776	3,950	3,989	4,168	2,407	2,423
NC	4,922	5,176	12,457	12,360	2,039	2,071
OH	25,833	26,519	26,427	27,090	2,195	2,237
OR	2,413	2,263	2,601	2,423	2,499	2,518
PA	20,435	20,548	21,973	21,935	2,398	2,380
SC	3,350	3,117	4,566	4,415	2,124	2,106
SD	3,093	2,417	3,156	2,442	2,218	2,416
TX	14,576	14,170	19,191	18,840	2,256	2,261
VA	1,409	1,359	3,231	2,909	2,043	2,028
WA	5,501	5,814	5,561	5,874	2,230	2,281
WI	4,227	4,172	4,825	4,726	2,280	2,306
Oth Sts ²	15,309	14,896	23,491	22,741	2,158	2,155
US	279,955	277,639	344,229	338,926	2,191	2,217

¹ Includes all layers and eggs produced in both table egg and hatching egg flocks regardless of size.

² Not published separately to avoid disclosing data for individual operations.

**Egg Production: By Type, State, and United States,
October 2007-08 ¹**

State	Total Production		Table Eggs ²		Hatching Eggs ²	
	2007	2008 ³	2007	2008 ³	2007	2008 ³
	<i>Million Eggs</i>	<i>Million Eggs</i>	<i>Million Eggs</i>	<i>Million Eggs</i>	<i>Million Eggs</i>	<i>Million Eggs</i>
AL	182	181	31	34	151	147
AR	275	266	97	92	178	174
CA	416	444				
CO	91	91				
CT	68	63				
FL	245	223	236	217	9	6
GA	410	386	221	215	189	171
HI	6.7	5.8	6.7	5.8	0	0
IL	130	128	126	125	4	3
IN	575	543	563	530	12	13
IA	1,193	1,238	1,177	1,221	16	17
ME	83	83				
MD	65	52	63	50	2	2
MI	227	234				
MN	241	236	232	228	9	8
MS	127	129	38	38	89	91
MO	156	150				
NE	245	234	245	234	0	0
NY	96	101				
NC	266	250	124	121	142	129
OH	596	618				
OR	64	62	62	60	2	2
PA	532	533	513	513	19	20
SC	103	92	80	69	23	23
SD	73	61	73	61	0	0
TX	431	433				
VA	68	59	33	29	35	30
WA	126	137				
WI	114	107				
Oth Sts ⁴	521	492	388	370	133	122
US	7,726	7,632	6,594	6,554	1,132	1,078

¹ Totals may not add due to rounding.

² Data by type of flock not shown for some States to avoid disclosing individual operations, data included in US totals.

³ Revised.

⁴ Not published separately to avoid disclosing data for individual operations.

**Egg Production: By Type, State, and United States,
November 2007-08 ¹**

State	Total Production		Table Eggs ²		Hatching Eggs ²	
	2007	2008	2007	2008	2007	2008
	<i>Million Eggs</i>	<i>Million Eggs</i>	<i>Million Eggs</i>	<i>Million Eggs</i>	<i>Million Eggs</i>	<i>Million Eggs</i>
AL	179	177	32	33	147	144
AR	271	250	96	85	175	165
CA	415	451				
CO	91	91				
CT	67	62				
FL	238	231	231	225	7	6
GA	402	382	219	218	183	164
HI	6.4	5.6	6.4	5.6	0	0
IL	121	130	118	127	3	3
IN	559	531	547	519	12	12
IA	1,151	1,203	1,136	1,188	15	15
ME	83	79				
MD	61	50	59	48	2	2
MI	225	231				
MN	238	227	229	219	9	8
MS	126	127	39	40	87	87
MO	145	147				
NE	235	222	235	222	0	0
NY	96	101				
NC	254	256	120	128	134	128
OH	580	606				
OR	65	61	63	59	2	2
PA	527	522	508	504	19	18
SC	97	93	76	70	21	23
SD	70	59	70	59	0	0
TX	433	426				
VA	66	59	33	30	33	29
WA	124	134				
WI	110	109				
Oth Sts ³	507	490	379	372	128	119
US	7,542	7,513	6,451	6,472	1,090	1,041

¹ Totals may not add due to rounding.

² Data by type of flock not shown for some States to avoid disclosing individual operations, data included in US totals.

³ Not published separately to avoid disclosing data for individual operations.

**Forced Molt: Percent of All Layers by Month,
United States, 2007-08 ¹**

Month	Percent Being Molted		Percent with Molt Completed	
	2007	2008	2007	2008
	<i>Percent</i>	<i>Percent</i>	<i>Percent</i>	<i>Percent</i>
Jan	4.4	2.8	24.5	22.8
Feb	3.4	3.9	24.4	21.7
Mar	2.9	2.0	24.2	22.2
Apr	2.8	2.7	23.5	21.2
May	5.4	4.0	22.2	20.5
Jun	3.6	3.6	24.1	20.7
Jul	4.0	3.3	24.2	20.9
Aug	3.4	3.9	23.6	21.1
Sep	3.5	3.9	24.1	20.9
Oct	3.5	3.7	23.7	21.9
Nov ²	2.6	2.0	24.0	22.0
Dec	1.8	1.8	23.9	21.4

¹ As of first of month.

² Revised 2008 only.

**Forced Molt: Percent of All Layers by State
and United States, December 2007-08 ¹**

State	Percent Being Molted		Percent with Molt Completed	
	2007	2008	2007	2008
	<i>Percent</i>	<i>Percent</i>	<i>Percent</i>	<i>Percent</i>
AL	0.5	0.5	6.5	5.5
AR	0.0	0.0	13.0	8.5
CA	3.5	1.0	31.5	33.0
CO	5.0	0.0	20.0	16.0
CT	0.0	0.0	15.5	18.5
FL	1.5	0.5	37.0	39.5
GA	0.5	1.5	14.5	11.5
HI	9.5	13.0	51.5	54.5
IL	3.0	0.0	39.0	33.0
IN	2.0	4.0	36.0	35.0
IA	2.5	3.0	37.0	29.5
ME	0.0	0.0	0.0	0.0
MD	6.0	4.0	17.0	8.5
MI	2.0	4.0	18.0	21.5
MN	1.5	1.5	29.5	26.0
MS	0.5	0.5	10.5	12.5
MO	3.0	0.0	16.0	7.5
NE	0.0	0.0	12.5	3.5
NY	2.5	0.5	8.0	7.0
NC	0.5	0.0	7.9	10.5
OH	2.0	2.5	16.5	18.0
OR	0.0	4.5	35.0	31.0
PA	2.0	0.0	12.5	10.0
SC	4.5	9.0	26.0	10.5
SD	5.0	6.5	19.0	30.5
TX	0.5	0.5	27.0	25.5
VA	0.0	0.0	26.5	17.5
WA	7.0	5.5	41.5	27.0
WI	2.0	3.5	31.0	25.5
Oth Sts ²	1.2	0.8	25.0	24.5
US	1.8	1.8	23.9	21.4

¹ As of first of month.

² Not published separately to avoid disclosing data for individual operations.

**Hatchery Production: Eggs in Incubators, Chicks Hatched,
and Placements by Type, United States, November-December 2007-08**

Item	2007	2008	2008 as % of 2007
	<i>1,000</i>	<i>1,000</i>	<i>Percent</i>
Egg-Type			
Eggs in Incubators on Dec 1	35,753	34,820	97
Chicks Hatched During Nov	36,232	36,607	101
Chicks Hatched Jan thru Nov	410,243	430,839	105
Pullets Hatched During Nov for Intended Placements in Hatchery Supply Flocks	281	317	113
7-18 Months Earlier ¹	2,955	2,961	100
Broiler-Type			
Eggs in Incubators on Dec 1	677,856	629,093	93
Chicks Hatched During Nov	760,033	705,587	93
Chicks Hatched Jan thru Nov	8,753,503	8,663,816	99
Pullets Hatched During Nov for Intended Placements in Hatchery Supply Flocks	7,606	7,221	95
7-15 Months Earlier ²	64,145	65,467	102

¹ 2008 includes pullet chicks hatched May 2007 through Apr 2008.

² 2008 includes pullet chicks hatched Aug 2007 through Apr 2008.

**Egg-Type Eggs in Incubators: By Region and United States,
December 1, 2007-08**

Region ¹	2007	2008	2008 as % of 2007
	<i>1,000</i>	<i>1,000</i>	<i>Percent</i>
North Atlantic	5,010	5,160	103
E North Central	7,055	7,162	102
W North Central	8,508	8,029	94
South Atlantic	5,226	3,758	72
South Central	4,833	5,356	111
West	5,121	5,355	105
US	35,753	34,820	97

¹ Regional listing on page 16.

**Egg-Type Chicks Hatched: By State and United States,
November 2007-08**

State	During November			Jan-Nov		
	2007	2008	2008 as % of 2007	2007	2008	2008 as % of 2007
	<i>1,000</i>	<i>1,000</i>	<i>Percent</i>	<i>1,000</i>	<i>1,000</i>	<i>Percent</i>
GA	1,993	1,892	95	24,178	23,344	97
IN	4,955	4,608	93	58,149	57,050	98
IA	6,762	6,876	102	80,370	83,143	103
MN	1,104	1,075	97	11,409	10,747	94
PA	4,342	5,742	132	49,754	56,594	114
Oth Sts ¹	17,076	16,414	96	186,383	199,961	107
US	36,232	36,607	101	410,243	430,839	105

¹ Not published separately to avoid disclosing data for individual operations.

Egg-Type Chicks Hatched: By Month, United States, 2007-08

Month	By Months			Cumulative		
	2007	2008	2008 as % of 2007	2007	2008	2008 as % of 2007
	<i>1,000</i>	<i>1,000</i>	<i>Percent</i>	<i>1,000</i>	<i>1,000</i>	<i>Percent</i>
Jan	36,195	40,167	111	36,195	40,167	111
Feb	36,739	37,549	102	72,934	77,716	107
Mar	38,561	39,547	103	111,495	117,263	105
Apr	39,254	41,051	105	150,749	158,314	105
May	38,080	42,724	112	188,829	201,038	106
Jun	40,641	42,538	105	229,470	243,576	106
Jul	35,952	37,929	105	265,422	281,505	106
Aug	36,930	36,301	98	302,352	317,806	105
Sep	35,327	36,428	103	337,679	354,234	105
Oct	36,332	39,998	110	374,011	394,232	105
Nov	36,232	36,607	101	410,243	430,839	105
Dec	35,866			446,109		

**Intended Placements: Egg-Type Pullet Chicks for Hatchery Supply
Flocks by Month and Total, United States, 2007-08¹**

Month	Pullet Chicks Hatched		2008 as % of 2007	Cumulative Potential Plcmts Relative to Current Supply Flocks 7-18 Months Earlier ²	
	2007	2008		2008	2009
	<i>1,000</i>	<i>1,000</i>	<i>Percent</i>	<i>1,000</i>	<i>1,000</i>
Jan	265	210	79	3,007	2,928
Feb	165	280	170	2,871	2,989
Mar	316	245	78	2,865	2,990
Apr	274	264	96	2,905	2,900
May	191	227	119	2,867	2,989
Jun	300	231	77	2,942	3,025
Jul	183	244	133	2,982	
Aug	278	279	100	2,927	
Sep	300	210	70	3,042	
Oct	184	273	148	2,971	
Nov	281	317	113	2,961	
Dec	245			2,997	
Total	2,982				

¹ Reported by leading breeders. Coverage may not be 100 percent. Includes expected pullet chicks from eggs sold during the preceding month at the rate of 125 pullet chicks per 30 dozen case of eggs.

² For November 2008, includes breeder pullet chicks hatched May 2007 through Apr 2008. The 7-18 months represent the first laying cycle. Molting and additional laying cycles will increase the cumulative potential placements.

**Broiler-Type Eggs in Incubators: By Region
and United States, December 1, 2007-08**

Region ¹	2007	2008	2008 as % of 2007
	<i>1,000</i>	<i>1,000</i>	<i>Percent</i>
North Atlantic	13,122	12,589	96
E North Central	11,325	11,426	101
W North Central	29,864	28,576	96
South Atlantic	247,617	230,117	93
South Central	350,556	322,700	92
West	25,372	23,685	93
US	677,856	629,093	93

¹ Regional listing on page 16.

**Broiler-Type Chicks Hatched: By State
and United States, November 2007-08**

State	During November			Jan-Nov		
	2007	2008	2008 as % of 2007	2007	2008	2008 as % of 2007
	<i>1,000</i>	<i>1,000</i>	<i>Percent</i>	<i>1,000</i>	<i>1,000</i>	<i>Percent</i>
AL	104,849	97,259	93	1,233,147	1,232,331	100
AR	92,972	82,651	89	1,110,269	1,050,996	95
DE	14,673	10,339	70	162,535	146,649	90
FL	4,881	4,378	90	54,358	53,207	98
GA	117,165	103,844	89	1,355,221	1,320,524	97
KY	24,272	25,364	104	299,391	305,340	102
LA	14,168	11,432	81	155,572	146,631	94
MD	29,870	29,450	99	341,950	348,082	102
MS	64,865	59,958	92	743,854	743,495	100
NC	68,594	65,630	96	767,664	761,207	99
OK	24,122	24,427	101	276,871	269,317	97
PA	14,251	12,307	86	156,203	163,465	105
SC	18,363	18,643	102	213,616	214,143	100
TX	51,926	50,948	98	591,672	611,245	103
VA	22,075	20,179	91	251,267	246,454	98
CA, MO, TN, & WV	67,873	65,261	96	781,231	775,626	99
19 Sts ¹	734,919	682,070	93	8,494,821	8,388,712	99
Oth Sts ²	25,114	23,517	94	258,682	275,104	106
US	760,033	705,587	93	8,753,503	8,663,816	99

¹ States in the weekly hatchery production estimating program.

² Not published separately to avoid disclosing data for individual operations.

Broiler-Type Chicks Hatched: By Month, United States, 2007-08

Month	By Months			Cumulative		
	2007	2008	2008 as % of 2007	2007	2008	2008 as % of 2007
	<i>1,000</i>	<i>1,000</i>	<i>Percent</i>	<i>1,000</i>	<i>1,000</i>	<i>Percent</i>
Jan	796,133	821,866	103	796,133	821,866	103
Feb	722,016	771,197	107	1,518,149	1,593,063	105
Mar	809,346	832,899	103	2,327,495	2,425,962	104
Apr	799,293	797,481	100	3,126,788	3,223,443	103
May	835,773	823,718	99	3,962,561	4,047,161	102
Jun	808,329	806,202	100	4,770,890	4,853,363	102
Jul	818,983	806,555	98	5,589,873	5,659,918	101
Aug	826,599	799,625	97	6,416,472	6,459,543	101
Sep	782,152	756,565	97	7,198,624	7,216,108	100
Oct	794,846	742,121	93	7,993,470	7,958,229	100
Nov	760,033	705,587	93	8,753,503	8,663,816	99
Dec	821,281			9,574,784		

**Intended Placements: Broiler-Type Pullet Chicks for Hatchery
Supply Flocks by Month and Total, 2007-08 ¹**

Month	Pullet Chicks Hatched		2008 as % of 2007	Cumulative Potential Plcmts Relative to Current Supply Flocks 7-15 Months Earlier ²	
	2007	2008		2008	2009
	<i>1,000</i>	<i>1,000</i>	<i>Percent</i>	<i>1,000</i>	<i>1,000</i>
US Place- ments					
Jan	7,015	7,012	100	65,333	66,073
Feb	7,071	7,536	107	65,223	65,867
Mar	7,135	7,090	99	65,397	65,958
Apr	6,692	6,867	103	65,567	65,596
May	8,083	8,217	102	65,522	65,423
Jun	7,799	7,527	97	66,057	65,108
Jul	6,634	6,764	102	66,170	
Aug	7,792	7,697	99	66,490	
Sep	7,346	6,886	94	65,943	
Oct	6,970	6,839	98	65,234	
Nov	7,606	7,221	95	65,467	
Dec	7,248			65,892	
Annual Total	87,391				
Total Place- ments ³					
Jan	8,772	8,706	99		
Feb	8,811	9,498	108		
Mar	9,025	9,245	102		
Apr	8,358	8,676	104		
May	9,780	10,089	103		
Jun	9,435	9,339	99		
Jul	8,037	8,319	104		
Aug	9,466	9,603	101		
Sep	8,994	8,651	96		
Oct	9,076	8,350	92		
Nov	9,204	8,950	97		
Dec	9,043				
Annual Total	108,001				

¹ Reported by leading breeders. Coverage may not be 100 percent. Includes expected pullet chicks from eggs sold during the preceding month at the rate of 125 pullet chicks per 30 dozen case of eggs.

² For Nov 2008, includes breeder pullet chicks hatched Aug 2007 through Apr 2008.

³ U.S. production of intended placements worldwide.

Reliability of Chickens and Eggs Estimates

Survey Procedures: Primary data for the "**Chickens and Eggs**" report are from weekly and/or monthly questionnaires sent to producers. An attempt is made to collect information for layer and egg estimates from each known contractor and independent producer who has at least 30,000 table egg layers, flocks of hatchery supply layers, or pullet only operations with at least 500 pullets. Coverage for operations with less than 30,000 table egg layers are estimated each month based on data reported in December. Approximately 650 contractors, independent egg producers, and pullet only operations are contacted each month. All known hatcheries, approximately 300, are contacted for information on a weekly and/or monthly basis.

Estimating Procedures: Sound statistical methodology is employed to derive estimates from the reported data. All data are analyzed for unusual values. Data from each operation are compared to their own past operating profile and to trends from similar operations. Data for missing operations are estimated based on similar operations or historical data. NASS field offices prepare these estimates by using a combination of survey indications and historic trends. Individual State estimates are reviewed by the Agricultural Statistics Board for reasonableness. Individual hatchery data are summed to State, regional, and U.S. totals.

For chicken hatcheries, chicks hatched consist of all chicks of domesticated breeds including males and chicks destined for hatchery supply flocks and research purposes. Eggs set are eggs in incubators for the purpose of hatching. The relationship of egg-type chicks hatched to chicken inventory and poultry marketings are carefully monitored. The disposition of egg-type chicks hatched prior to placement into the laying flock can vary significantly, which can make comparisons to changes in layer inventory inconsistent over time. Broiler chicks placed are specifically placed on feed for meat production. Intended placement data reported by leading breeders include pullet chicks expected from eggs sold the preceding month. The breeders in this report account for a large percentage of replacement pullets for hatchery supply flocks. Production of replacement pullets by these breeders indicates the number of pullets available to hatchery supply layer flocks several months before the pullets will actually move into the laying flocks. "Hatchery Supply Flocks" include all generations of layers which could lay eggs to supply a hatchery. This includes the generations of parents, grandparents, great-grandparents, pedigree, etc. Also included are research flocks, vaccine flocks, and specific pathogen-free flocks. The broiler cumulative potential placements are a moving total of the intended placements 7-15 months earlier. The egg-type cumulative potential placements of 7-18 months earlier represent the first laying cycle. Molting and additional laying cycles will increase the cumulative potential placements of egg-type hatching flocks.

Revision Policy: The previous month's estimates are subject to revision if late reports or corrected data indicates a different level. Additionally, revisions after the monthly report will be made at the end of the marketing year and published in the annual reports of "**Chickens and Eggs Summary**" and "**Hatchery Production**".

Reliability: Estimates are based on a census of all known contractors and independent producers who have at least 30,000 table egg layers, flocks of hatchery supply layers, pullet only operations with at least 500 pullets, or operating hatcheries and therefore, have no sampling error. However, estimates are subject to errors such as omission, duplication, and mistakes in reporting, recording, and processing the data. While these errors cannot be measured directly, they are minimized through strict quality controls in the data collection process and a careful review of all reported data for consistency and reasonableness.

To assist in evaluating the reliability of the estimates in this report, the "Root Mean Square Error" is shown for selected items in the following table. The "Root Mean Square Error" is a statistical measure based on past performance and is computed using the differences between first and final estimates. The "Root Mean Square Error" for all layers over the past 24 months is 0.6 percent. This means that chances are 2 out of 3 that the final estimate will not be above or below the current estimate of 339 million layers by more than 0.6 percent. Chances are 9 out of 10 that the difference will not exceed 1.0 percent.

Reliability of Layer and Egg Estimates ¹

Item	Root Mean Square Error	90 Percent Confidence Level		Difference Between First and Latest Estimates			Number of Years	
				Average	Smallest	Largest	First Above Latest	First Below Latest
All Layers	<i>Percent</i> 0.6	<i>Percent</i> 1.0	<i>1,000</i> 35	<i>1,000</i> 970	<i>1,000</i> 0	<i>1,000</i> 3,157	<i>Number</i> 4	<i>Number</i> 19
Eggs	0.4	0.7	<i>Million Eggs</i> 1	<i>Million Eggs</i> 22	<i>Million Eggs</i> 0	<i>Million Eggs</i> 65	6	17

¹ Based on data for the past 24 months.

Regional Listing

North Atlantic: CT, ME, MA, NH, NJ, NY, PA, RI, VT.

East North Central: IL, IN, MI, OH, WI.

West North Central: IA, KS, MN, MO, NE, ND, SD.

South Atlantic: DE, FL, GA, MD, NC, SC, VA, WV.

South Central: AL, AR, KY, LA, MS, OK, TN, TX.

West: AK, AZ, CA, CO, HI, ID, MT, NM, NV, OR, UT, WA, WY.

Information Contacts

Listed below are the commodity specialists in the Livestock Branch of the National Agricultural Statistics Service to contact for additional information.

Dan Kerestes, Chief, Livestock Branch (202) 720-3570

Bruce Boess, Head, Poultry and Specialty Commodities Section..... (202) 720-4447

 David Colwell - Cold Storage (202) 720-8784

 Fleming Gibson - Poultry Slaughter, Turkey Hatchery, Turkeys Raised..... (202) 690-3237

 Sharyn Lavender - Broiler Hatchery, Chicken Hatchery, Honey (202) 720-3244

 Kim Linonis - Layers, Eggs (202) 690-8632

 Toby Paterson - Catfish Processing, Catfish Production, Trout Production,
 Census of Aquaculture, Egg Products, Mink (202) 720-0585

ACCESS TO REPORTS!!

For your convenience, there are several ways to obtain NASS reports, data products, and services:

INTERNET ACCESS

All NASS reports are available free of charge on the worldwide Internet. For access, connect to the Internet and go to the NASS Home Page at: www.nass.usda.gov.

E-MAIL SUBSCRIPTION

All NASS reports are available by subscription free of charge direct to your e-mail address. Starting with the NASS Home Page at www.nass.usda.gov, under the right navigation, *Receive reports by Email*, click on **National** or **State**. Follow the instructions on the screen.

PRINTED REPORTS OR DATA PRODUCTS

CALL OUR TOLL-FREE ORDER DESK: 800-999-6779 (U.S. and Canada)
Other areas, please call 703-605-6220 FAX: 703-605-6900
(Visa, MasterCard, check, or money order acceptable for payment.)

ASSISTANCE

For **assistance** with general agricultural statistics or further information about NASS or its products or services, contact the **Agricultural Statistics Hotline** at **800-727-9540**, 7:30 a.m. to 4:00 p.m. ET, or e-mail: nass@nass.usda.gov.

The U.S. Department of Agriculture (USDA) prohibits discrimination in all its programs and activities on the basis of race, color, national origin, age, disability, and where applicable, sex, marital status, familial status, parental status, religion, sexual orientation, genetic information, political beliefs, reprisal, or because all or a part of an individual's income is derived from any public assistance program. (Not all prohibited bases apply to all programs.) Persons with disabilities who require alternative means for communication of program information (Braille, large print, audiotape, etc.) should contact USDA's TARGET Center at (202) 720-2600 (voice and TDD).

To file a complaint of discrimination, write to USDA, Director, Office of Civil Rights, 1400 Independence Avenue, S.W., Washington, D.C. 20250-9410, or call (800) 795-3272 (voice) or (202) 720-6382 (TDD). USDA is an equal opportunity provider and employer.