

Chickens and Eggs

Released January 23, 2009, by the National Agricultural Statistics Service (NASS), Agricultural Statistics Board, U.S. Department of Agriculture. For information on "Layers and Eggs" call Kim Linonis at (202) 690-8632, for "Chicks Hatched" call Sharyn Lavender at (202) 720-3244, office hours 7:30 a.m. to 4:00 p.m. ET.

December Egg Production Down Slightly

U.S. egg production totaled 7.78 billion during December 2008, down slightly from last year. Production included 6.71 billion table eggs, and 1.07 billion hatching eggs, of which 1.00 billion were broiler-type and 67 million were egg-type. The total number of layers during December 2008 averaged 341 million, down 1 percent from last year. December egg production per 100 layers was 2,281 eggs, up 1 percent from December 2007.

All layers in the U.S. on January 1, 2009 totaled 341 million, down 1 percent from last year. The 341 million layers consisted of 285 million layers producing table or market type eggs, 53.6 million layers producing broiler-type hatching eggs, and 2.81 million layers producing egg-type hatching eggs. Rate of lay per day on January 1, 2009, averaged 72.9 eggs per 100 layers, up 1 percent from January 1, 2008.

Egg-Type Chicks Hatched Up 1 Percent

Egg-type chicks hatched during December 2008 totaled 36.4 million, up 1 percent from December 2007. Eggs in incubators totaled 36.7 million on January 1, 2009, up 2 percent from a year ago.

Domestic placements of egg-type pullet chicks for future hatchery supply flocks by leading breeders totaled 199 thousand during December 2008, down 19 percent from December 2007.

Broiler-Type Chicks Hatched Down 5 Percent

Broiler-type chicks hatched during December 2008 totaled 779 million, down 5 percent from December 2007. Eggs in incubators totaled 630 million on January 1, 2009, down 7 percent from a year earlier.

Leading breeders placed 6.58 million broiler-type pullet chicks for future domestic hatchery supply flocks during December 2008, down 9 percent from December 2007.

Contents

	Page
U.S. Average Number of Layers on Hand and Egg Production.....	1
U.S. Layers on Hand and Eggs Produced by Type, Forced Molt, and Pullets.....	3
Layers on Hand and Eggs Produced by State.....	5
Egg Production by Type and State	7
Forced Molt	9
U.S. Hatchery Production Summary	10
Egg-Type Hatchery	11
Egg-Type Intended Placements	12
Broiler-Type Hatchery	12
Broiler-Type Intended Placements	14
Reliability of Chickens and Eggs Estimates.....	15
Regional Listing	16
Information Contacts.....	16

**All Layers: Average Number on Hand During the Month,
United States, 2007-09**

Month	2007	2008	2009
	<i>1,000 Layers</i>	<i>1,000 Layers</i>	<i>1,000 Layers</i>
Dec ¹	349,862	344,965	340,957
Jan	348,897	344,791	
Feb	348,843	343,129	
Mar	348,201	341,906	
Apr	345,578	341,203	
May	342,469	340,259	
Jun	340,237	338,612	
Jul	340,035	336,191	
Aug	340,651	335,171	
Sep	340,984	334,374	
Oct	342,637	335,339	
Nov ²	344,229	338,898	

¹ December preceding year.

² Revised.

**Eggs: Production During the Month by Type,
United States, 2008-09 ¹**

Month	Total Eggs		Table Eggs		Hatching Eggs	
	2008	2009	2008	2009	2008	2009
	<i>Million Eggs</i>	<i>Million Eggs</i>	<i>Million Eggs</i>	<i>Million Eggs</i>	<i>Million Eggs</i>	<i>Million Eggs</i>
Dec ²	7,784	7,778	6,654	6,712	1,129	1,067
Jan	7,647		6,508		1,139	
Feb	7,113		6,042		1,071	
Mar	7,673		6,525		1,148	
Apr	7,381		6,275		1,106	
May	7,571		6,426		1,145	
Jun	7,370		6,275		1,094	
Jul	7,599		6,484		1,115	
Aug	7,549		6,446		1,103	
Sep	7,336		6,281		1,055	
Oct	7,632		6,554		1,078	
Nov ³	7,510		6,470		1,040	
During Year	90,165		76,940		13,223	

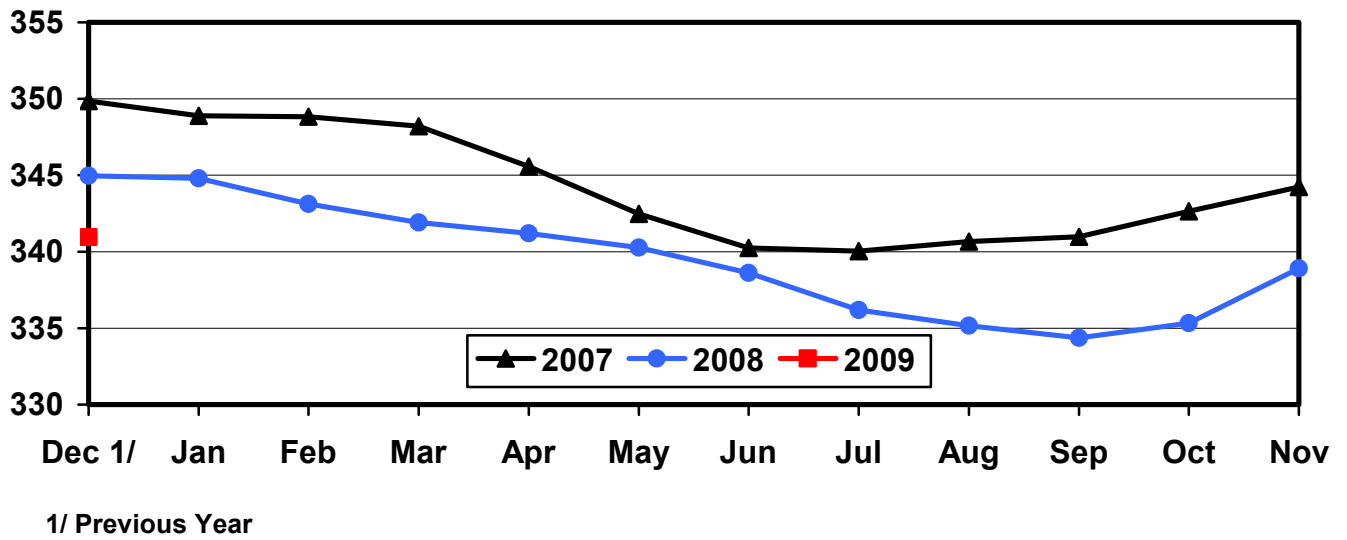
¹ Totals may not add due to rounding.

² December preceding year.

³ Revised.

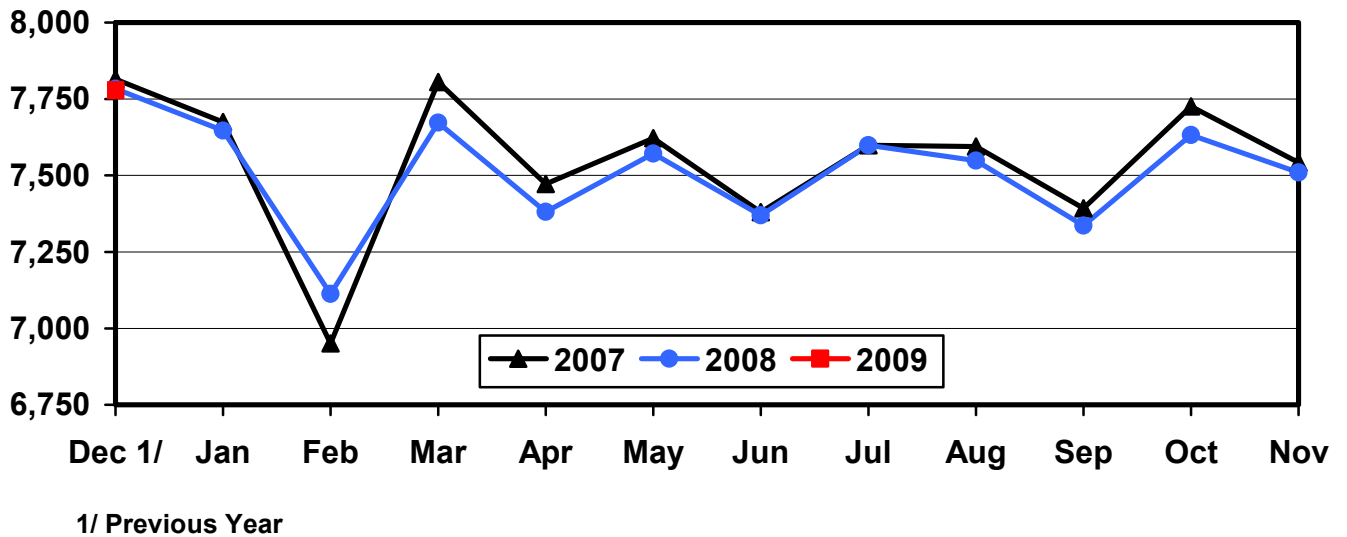
Average Number of Layers During the Month

Million Layers



All Egg Production During the Month

Million Eggs



**Layers and Eggs: Layers on Hand and Eggs Produced by Type,
and Forced Molt, United States, November-December 2007-08¹**

Item	Unit	2007	2008 ²	2008 as % of 2007
Layers During Nov	1,000			
All Layers		344,229	338,898	98
Table Egg Type		285,396	282,945	99
Hatching Egg Type		58,833	55,953	95
Broiler-Type Hatching		55,986	53,015	95
Egg-Type Hatching		2,847	2,938	103
Eggs per 100 Layers During Nov	Number			
All Layers		2,191	2,216	101
Table Egg Type		2,260	2,287	101
Hatching Egg Type		1,853	1,859	100
Broiler-Type Hatching		1,829	1,833	100
Egg-Type Hatching		2,318	2,314	100
Eggs Produced During Nov	Million			
All Layers		7,542	7,510	100
Table Egg Type		6,451	6,470	100
Hatching Egg Type		1,090	1,040	95
Broiler-Type Hatching		1,024	972	95
Egg-Type Hatching		66	68	103
Layers on Dec 1	1,000			
All Layers		344,492	340,473	99
Table Egg Type		285,677	284,993	100
Hatching Egg Type		58,815	55,480	94
Broiler-Type Hatching		55,995	52,707	94
Egg-Type Hatching		2,820	2,773	98
Eggs per 100 Layers on Dec 1	Number			
All Layers		73.2	74.2	101
Table Egg Type		75.5	76.6	101
Hatching Egg Type		61.7	61.9	100
Broiler-Type Hatching		60.8	61.2	101
Egg-Type Hatching		78.6	75.4	96
Forced Molt Layers on Dec 1	Percent			
Percent Being Molted		1.8	1.8	100
Percent with Molt Completed		23.9	21.6	90
Layers Sold for Slaughter During Nov	1,000	11,638	12,200	105
Layers Rendered, Died, Destroyed, Composted or Disappeared For Any Reason During Nov	1,000	5,652	5,607	99
Pullets on Dec 1	1,000	102,301	99,157	97
Pullets Added During Nov ³	1,000	21,730	20,081	92

¹ Totals may not add due to rounding.

² Revised.

³ Pullet chicks less than 3 days old added to pullet flocks.

**Layers and Eggs: Layers on Hand and Eggs Produced by Type,
and Forced Molt, United States, December-January 2007-09 ¹**

Item	Unit	2007	2008	2008 as % of 2007
Layers During Dec	1,000			
All Layers		344,965	340,957	99
Table Egg Type		285,566	285,005	100
Hatching Egg Type		59,399	55,952	94
Broiler-Type Hatching		56,610	53,153	94
Egg-Type Hatching		2,789	2,799	100
Eggs per 100 Layers During Dec	Number			
All Layers		2,256	2,281	101
Table Egg Type		2,330	2,355	101
Hatching Egg Type		1,901	1,907	100
Broiler-Type Hatching		1,876	1,881	100
Egg-Type Hatching		2,402	2,394	100
Eggs Produced During Dec	Million			
All Layers		7,784	7,778	100
Table Egg Type		6,654	6,712	101
Hatching Egg Type		1,129	1,067	95
Broiler-Type Hatching		1,062	1,000	94
Egg-Type Hatching		67	67	100
		2008	2009	2009 as % of 2008
Layers on Jan 1	1,000			
All Layers		345,398	341,399	99
Table Egg Type		285,435	284,999	100
Hatching Egg Type		59,963	56,400	94
Broiler-Type Hatching		57,215	53,588	94
Egg-Type Hatching		2,748	2,812	102
Eggs per 100 Layers on Jan 1	Number			
All Layers		72.4	72.9	101
Table Egg Type		74.7	75.3	101
Hatching Egg Type		61.0	60.9	100
Broiler-Type Hatching		60.2	60.0	100
Egg-Type Hatching		77.2	79.1	102
Forced Molt Layers on Jan 1	Percent			
Percent Being Molted		2.8	3.0	107
Percent with Molt Completed		22.8	20.6	90
Layers Sold for Slaughter During Dec	1,000	11,430	12,030	105
Layers Rendered, Died, Destroyed, Composted or Disappeared For Any Reason During Dec	1,000	7,122	6,802	96
Pullets on Jan 1	1,000	102,978	99,664	97
Pullets Added During Dec ²	1,000	22,946	21,219	92

¹ Totals may not add due to rounding.

² Pullet chicks less than 3 days old added to pullet flocks.

**Layers and Eggs: Layers on Hand and Eggs Produced by State
and United States, During November 2007-08**

State	Table Egg Layers in Flocks 30,000 and Above		All Layers ¹		Eggs per 100 for All Layers ¹	
	2007	2008 ²	2007	2008 ²	2007	2008 ²
	<i>1,000</i>	<i>1,000</i>	<i>1,000</i>	<i>1,000</i>	<i>Number</i>	<i>Number</i>
AL	1,367	1,380	9,476	9,343	1,889	1,884
AR	4,100	3,653	13,946	12,740	1,943	1,962
CA	19,097	19,952	19,281	20,300	2,152	2,192
CO	3,349	3,434	3,886	3,882	2,342	2,344
CT	2,846	2,700	2,903	2,753	2,308	2,252
FL	10,421	9,886	10,869	10,272	2,190	2,249
GA	9,589	9,503	19,306	18,263	2,082	2,092
HI	347	310	362	338	1,768	1,657
IL	4,927	5,319	5,156	5,531	2,347	2,350
IN	23,961	23,236	24,671	23,968	2,266	2,215
IA	52,548	52,278	53,452	53,170	2,153	2,263
ME	3,813	3,544	3,889	3,615	2,134	2,185
MD	2,653	2,193	2,814	2,360	2,168	2,119
MI	8,863	9,440	9,088	9,640	2,476	2,396
MN	9,894	9,542	10,371	10,016	2,295	2,266
MS	1,580	1,589	6,353	6,222	1,983	2,041
MO	5,655	5,647	6,762	6,728	2,144	2,185
NE	10,101	9,526	10,176	9,601	2,309	2,312
NY	3,776	3,950	3,989	4,168	2,407	2,423
NC	4,922	5,176	12,457	12,360	2,039	2,071
OH	25,833	26,519	26,427	27,090	2,195	2,237
OR	2,413	2,263	2,601	2,423	2,499	2,518
PA	20,435	20,548	21,973	21,935	2,398	2,380
SC	3,350	3,117	4,566	4,415	2,124	2,106
SD	3,093	2,417	3,156	2,442	2,218	2,416
TX	14,576	14,170	19,191	18,840	2,256	2,261
VA	1,409	1,383	3,231	2,933	2,043	2,046
WA	5,501	5,814	5,561	5,874	2,230	2,281
WI	4,227	4,172	4,825	4,726	2,280	2,306
Oth Sts ³	15,309	14,928	23,491	22,950	2,158	2,148
US	279,955	277,589	344,229	338,898	2,191	2,216

¹ Includes all layers and eggs produced in both table egg and hatching egg flocks regardless of size.

² Revised.

³ Not published separately to avoid disclosing data for individual operations.

**Layers and Eggs: Layers on Hand and Eggs Produced by State
and United States, During December 2007-08**

State	Table Egg Layers in Flocks 30,000 and Above		All Layers ¹		Eggs per 100 for All Layers ¹	
	2007	2008	2007	2008	2007	2008
	<i>1,000</i>	<i>1,000</i>	<i>1,000</i>	<i>1,000</i>	<i>Number</i>	<i>Number</i>
AL	1,402	1,372	9,526	9,392	1,942	1,948
AR	4,106	3,695	14,108	13,045	1,963	1,993
CA	19,268	19,838	19,476	20,060	2,239	2,273
CO	3,326	3,507	3,863	3,955	2,382	2,478
CT	2,925	2,779	2,980	2,829	2,383	2,298
FL	10,480	9,955	10,948	10,330	2,274	2,333
GA	9,586	9,677	19,312	18,439	2,133	2,131
HI	341	311	360	338	1,778	1,775
IL	4,935	5,248	5,162	5,464	2,344	2,324
IN	23,613	23,552	24,351	24,271	2,308	2,307
IA	53,082	52,618	53,984	53,470	2,245	2,287
ME	3,816	3,517	3,888	3,584	2,058	2,204
MD	2,587	2,160	2,756	2,328	2,177	2,191
MI	8,900	9,437	9,107	9,644	2,482	2,457
MN	9,782	9,554	10,232	10,041	2,375	2,330
MS	1,621	1,577	6,410	6,045	2,028	2,068
MO	5,621	5,716	6,779	6,903	2,301	2,361
NE	10,171	9,685	10,246	9,760	2,381	2,398
NY	3,708	3,922	3,921	4,145	2,499	2,485
NC	4,965	5,373	12,566	12,540	2,109	2,113
OH	26,228	26,996	26,825	27,556	2,345	2,384
OR	2,469	2,385	2,657	2,542	2,559	2,596
PA	20,439	20,645	21,836	21,997	2,464	2,450
SC	3,264	3,099	4,492	4,420	2,204	2,195
SD	2,992	2,415	3,017	2,440	2,254	2,377
TX	14,315	14,061	19,157	18,506	2,281	2,286
VA	1,399	1,469	3,207	2,996	2,058	2,136
WA	5,499	5,844	5,560	5,904	2,212	2,405
WI	4,194	4,118	4,770	4,682	2,369	2,413
Oth Sts ²	15,185	15,125	23,469	23,331	2,207	2,212
US	280,219	279,650	344,965	340,957	2,256	2,281

¹ Includes all layers and eggs produced in both table egg and hatching egg flocks regardless of size.

² Not published separately to avoid disclosing data for individual operations.

**Egg Production: By Type, State, and United States,
November 2007-08 ¹**

State	Total Production		Table Eggs ²		Hatching Eggs ²	
	2007	2008 ³	2007	2008 ³	2007	2008 ³
	<i>Million Eggs</i>	<i>Million Eggs</i>	<i>Million Eggs</i>	<i>Million Eggs</i>	<i>Million Eggs</i>	<i>Million Eggs</i>
AL	179	176	32	33	147	143
AR	271	250	96	85	175	165
CA	415	445				
CO	91	91				
CT	67	62				
FL	238	231	231	225	7	6
GA	402	382	219	218	183	164
HI	6.4	5.6	6.4	5.6	0	0
IL	121	130	118	127	3	3
IN	559	531	547	519	12	12
IA	1,151	1,203	1,136	1,188	15	15
ME	83	79				
MD	61	50	59	48	2	2
MI	225	231				
MN	238	227	229	219	9	8
MS	126	127	39	40	87	87
MO	145	147				
NE	235	222	235	222	0	0
NY	96	101				
NC	254	256	120	128	134	128
OH	580	606				
OR	65	61	63	59	2	2
PA	527	522	508	504	19	18
SC	97	93	76	70	21	23
SD	70	59	70	59	0	0
TX	433	426				
VA	66	60	33	31	33	29
WA	124	134				
WI	110	109				
Oth Sts ⁴	507	493	379	372	128	122
US	7,542	7,510	6,451	6,470	1,090	1,040

¹ Totals may not add due to rounding.

² Data by type of flock not shown for some States to avoid disclosing individual operations, data included in US totals.

³ Revised.

⁴ Not published separately to avoid disclosing data for individual operations.

**Egg Production: By Type, State, and United States,
December 2007-08 ¹**

State	Total Production		Table Eggs ²		Hatching Eggs ²	
	2007	2008	2007	2008	2007	2008
	<i>Million Eggs</i>	<i>Million Eggs</i>	<i>Million Eggs</i>	<i>Million Eggs</i>	<i>Million Eggs</i>	<i>Million Eggs</i>
AL	185	183	33	34	152	149
AR	277	260	96	89	181	171
CA	436	456				
CO	92	98				
CT	71	65				
FL	249	241	241	235	8	6
GA	412	393	225	225	187	168
HI	6.4	6.0	6.4	6.0	0	0
IL	121	127	117	124	4	3
IN	562	560	549	547	13	13
IA	1,212	1,223	1,197	1,209	15	14
ME	80	79				
MD	60	51	58	49	2	2
MI	226	237				
MN	243	234	235	225	8	9
MS	130	125	40	39	90	86
MO	156	163				
NE	244	234	244	234	0	0
NY	98	103				
NC	265	265	123	132	142	133
OH	629	657				
OR	68	66	66	64	2	2
PA	538	539	518	522	20	17
SC	99	97	77	74	22	23
SD	68	58	68	58	0	0
TX	437	423				
VA	66	64	33	35	33	29
WA	123	142				
WI	113	113				
Oth Sts ³	518	516	386	388	132	129
US	7,784	7,778	6,654	6,712	1,129	1,067

¹ Totals may not add due to rounding.

² Data by type of flock not shown for some States to avoid disclosing individual operations, data included in US totals.

³ Not published separately to avoid disclosing data for individual operations.

**Forced Molt: Percent of All Layers by Month,
United States, 2008-09 ¹**

Month	Percent Being Molted		Percent with Molt Completed	
	2008	2009	2008	2009
	<i>Percent</i>	<i>Percent</i>	<i>Percent</i>	<i>Percent</i>
Jan	2.8	3.0	22.8	20.6
Feb	3.9		21.7	
Mar	2.0		22.2	
Apr	2.7		21.2	
May	4.0		20.5	
Jun	3.6		20.7	
Jul	3.3		20.9	
Aug	3.9		21.1	
Sep	3.9		20.9	
Oct	3.7		21.9	
Nov	2.0		22.0	
Dec ²	1.8		21.6	

¹ As of first of month.

² Revised 2008 only.

**Forced Molt: Percent of All Layers by State
and United States, January 2008-09 ¹**

State	Percent Being Molted		Percent with Molt Completed	
	2008	2009	2008	2009
	<i>Percent</i>	<i>Percent</i>	<i>Percent</i>	<i>Percent</i>
AL	1.0	0.5	6.0	6.5
AR	2.5	1.5	12.5	7.5
CA	9.5	2.5	33.5	33.5
CO	1.5	4.5	17.0	18.0
CT	0.0	0.0	14.5	17.5
FL	3.0	4.5	35.0	37.5
GA	1.5	1.0	14.0	10.5
HI	6.5	11.5	55.0	55.5
IL	2.0	10.5	31.0	31.0
IN	4.0	3.5	32.0	34.5
IA	2.5	3.5	35.0	29.0
ME	0.0	0.0	0.0	0.0
MD	8.0	10.0	11.5	5.0
MI	0.0	8.0	17.5	22.0
MN	2.0	2.0	28.0	26.5
MS	2.0	2.0	9.5	10.0
MO	4.0	3.0	14.5	6.0
NE	0.0	0.0	12.5	3.5
NY	0.5	1.0	8.5	5.5
NC	0.0	2.0	8.1	11.0
OH	2.5	2.5	15.5	17.5
OR	4.0	5.5	26.5	30.0
PA	1.5	3.0	14.5	10.5
SC	2.5	3.0	25.0	15.5
SD	5.0	11.0	18.0	29.5
TX	4.5	3.5	25.0	19.0
VA	0.0	0.0	26.5	16.5
WA	5.0	4.0	43.0	28.5
WI	4.0	3.5	31.5	22.5
Oth Sts ²	2.8	2.6	23.7	22.2
US	2.8	3.0	22.8	20.6

¹ As of first of month.

² Not published separately to avoid disclosing data for individual operations.

**Hatchery Production: Eggs in Incubators, Chicks Hatched,
and Placements by Type, United States, December-January 2008-09**

Item	2008	2009	2009 as % of 2008
	<i>1,000</i>	<i>1,000</i>	<i>Percent</i>
Egg-Type			
Eggs in Incubators on Jan 1	35,828	36,665	102
Chicks Hatched During Dec ¹	35,866	36,393	101
Chicks Hatched Jan thru Dec ¹	446,109	467,232	105
Pullets Hatched During Jan for Intended Placements in Hatchery Supply Flocks ¹	245	199	81
7-18 Month Earlier ^{1 2}	2,905	2,997	103
Broiler-Type			
Eggs in Incubators on Jan 1	677,028	630,209	93
Chicks Hatched During Dec ¹	821,281	779,160	95
Chicks Hatched Jan thru Dec ¹	9,574,784	9,442,976	99
Pullets Hatched During Jan for Intended Placements in Hatchery Supply Flocks ¹	7,248	6,580	91
7-15 Months Earlier ^{1 3}	64,597	65,892	102

¹ Previous year.

² 2009 includes pullet chicks hatched Jun 2007 through May 2008.

³ 2009 includes pullet chicks hatched Sep 2007 through May 2008.

**Egg-Type Eggs in Incubators: By Region and United States,
January 1, 2008-09**

Region ¹	2008	2009	2009 as % of 2008
	<i>1,000</i>	<i>1,000</i>	<i>Percent</i>
North Atlantic	5,267	5,379	102
E North Central	7,567	7,518	99
W North Central	7,834	7,985	102
South Atlantic	4,886	3,729	76
South Central	5,313	6,116	115
West	4,961	5,938	120
US	35,828	36,665	102

¹ Regional listing on page 16.

**Egg-Type Chicks Hatched: By State and United States,
December 2007-08**

State	During December			Jan-Dec		
	2007	2008	2008 as % of 2007	2007	2008	2008 as % of 2007
	<i>1,000</i>	<i>1,000</i>	<i>Percent</i>	<i>1,000</i>	<i>1,000</i>	<i>Percent</i>
GA	2,105	2,090	99	26,283	25,434	97
IN	4,958	5,710	115	63,107	62,760	99
IA	6,804	6,876	101	87,174	90,019	103
MN	991	1,134	114	12,400	11,881	96
PA	4,575	4,041	88	54,329	60,635	112
Oth Sts ¹	16,433	16,542	101	202,816	216,503	107
US	35,866	36,393	101	446,109	467,232	105

¹ Not published separately to avoid disclosing data for individual operations.

Egg-Type Chicks Hatched: By Month, United States, 2007-08

Month	By Months			Cumulative		
	2007	2008	2008 as % of 2007	2007	2008	2008 as % of 2007
	<i>1,000</i>	<i>1,000</i>	<i>Percent</i>	<i>1,000</i>	<i>1,000</i>	<i>Percent</i>
Jan	36,195	40,167	111	36,195	40,167	111
Feb	36,739	37,549	102	72,934	77,716	107
Mar	38,561	39,547	103	111,495	117,263	105
Apr	39,254	41,051	105	150,749	158,314	105
May	38,080	42,724	112	188,829	201,038	106
Jun	40,641	42,538	105	229,470	243,576	106
Jul	35,952	37,929	105	265,422	281,505	106
Aug	36,930	36,301	98	302,352	317,806	105
Sep	35,327	36,428	103	337,679	354,234	105
Oct	36,332	39,998	110	374,011	394,232	105
Nov	36,232	36,607	101	410,243	430,839	105
Dec	35,866	36,393	101	446,109	467,232	105

**Intended Placements: Egg-Type Pullet Chicks for Hatchery Supply
Flocks by Month and Total, United States, 2007-08¹**

Month	Pullet Chicks Hatched		2008 as % of 2007	Cumulative Potential Plcmts Relative to Current Supply Flocks 7-18 Months Earlier ²	
	2007	2008		2008	2009
	<i>1,000</i>	<i>1,000</i>	<i>Percent</i>	<i>1,000</i>	<i>1,000</i>
Jan	265	210	79	3,007	2,928
Feb	165	280	170	2,871	2,989
Mar	316	245	78	2,865	2,990
Apr	274	264	96	2,905	2,900
May	191	227	119	2,867	2,989
Jun	300	231	77	2,942	3,025
Jul	183	244	133	2,982	2,979
Aug	278	279	100	2,927	
Sep	300	210	70	3,042	
Oct	184	273	148	2,971	
Nov	281	317	113	2,961	
Dec	245	199	81	2,997	
Total	2,982	2,979			

¹ Reported by leading breeders. Coverage may not be 100 percent. Includes expected pullet chicks from eggs sold during the preceding month at the rate of 125 pullet chicks per 30 dozen case of eggs.

² For December 2008, includes breeder pullet chicks hatched Jun 2007 through May 2008. The 7-18 months represent the first laying cycle. Molting and additional laying cycles will increase the cumulative potential placements.

**Broiler-Type Eggs in Incubators: By Region
and United States, January 1, 2008-09**

Region ¹	2008	2009	2009 as % of 2008
	<i>1,000</i>	<i>1,000</i>	<i>Percent</i>
North Atlantic	12,863	11,931	93
E North Central	11,159	11,324	101
W North Central	29,884	29,104	97
South Atlantic	253,234	233,580	92
South Central	345,610	320,269	93
West	24,278	24,001	99
US	677,028	630,209	93

¹ Regional listing on page 16.

**Broiler-Type Chicks Hatched: By State
and United States, December 2007-08**

State	During December			Jan-Dec		
	2007	2008	2008 as % of 2007	2007	2008	2008 as % of 2007
	<i>1,000</i>	<i>1,000</i>	<i>Percent</i>	<i>1,000</i>	<i>1,000</i>	<i>Percent</i>
AL	119,224	109,328	92	1,352,371	1,341,659	99
AR	105,700	92,277	87	1,215,969	1,143,273	94
DE	15,311	12,213	80	177,846	158,862	89
FL	4,974	4,698	94	59,332	57,905	98
GA	125,585	117,499	94	1,480,806	1,438,023	97
KY	27,580	28,783	104	326,971	334,123	102
LA	14,469	13,023	90	170,041	159,654	94
MD	31,449	32,184	102	373,399	380,266	102
MS	69,754	64,880	93	813,608	808,375	99
NC	72,070	68,905	96	839,734	830,112	99
OK	24,132	24,377	101	301,003	293,694	98
PA	15,257	15,237	100	171,460	178,702	104
SC	19,468	20,096	103	233,084	234,239	100
TX	56,004	56,325	101	647,676	667,570	103
VA	23,372	22,487	96	274,639	268,941	98
CA, MO, TN, & WV	73,314	71,299	97	854,545	846,925	99
19 Sts ¹	797,663	753,611	94	9,292,484	9,142,323	98
Oth Sts ²	23,618	25,549	108	282,300	300,653	107
US	821,281	779,160	95	9,574,784	9,442,976	99

¹ States in the weekly hatchery production estimating program.

² Not published separately to avoid disclosing data for individual operations.

Broiler-Type Chicks Hatched: By Month, United States, 2007-08

Month	By Months			Cumulative		
	2007	2008	2008 as % of 2007	2007	2008	2008 as % of 2007
	<i>1,000</i>	<i>1,000</i>	<i>Percent</i>	<i>1,000</i>	<i>1,000</i>	<i>Percent</i>
Jan	796,133	821,866	103	796,133	821,866	103
Feb	722,016	771,197	107	1,518,149	1,593,063	105
Mar	809,346	832,899	103	2,327,495	2,425,962	104
Apr	799,293	797,481	100	3,126,788	3,223,443	103
May	835,773	823,718	99	3,962,561	4,047,161	102
Jun	808,329	806,202	100	4,770,890	4,853,363	102
Jul	818,983	806,555	98	5,589,873	5,659,918	101
Aug	826,599	799,625	97	6,416,472	6,459,543	101
Sep	782,152	756,565	97	7,198,624	7,216,108	100
Oct	794,846	742,121	93	7,993,470	7,958,229	100
Nov	760,033	705,587	93	8,753,503	8,663,816	99
Dec	821,281	779,160	95	9,574,784	9,442,976	99

**Intended Placements: Broiler-Type Pullet Chicks for Hatchery
Supply Flocks by Month and Total, 2007-08 ¹**

Month	Pullet Chicks Hatched		2008 as % of 2007	Cumulative Potential Plcmts Relative to Current Supply Flocks 7-15 Months Earlier ²	
	2007	2008		2008	2009
	<i>1,000</i>	<i>1,000</i>	<i>Percent</i>	<i>1,000</i>	<i>1,000</i>
US Place- ments					
Jan	7,015	7,012	100	65,333	66,073
Feb	7,071	7,536	107	65,223	65,867
Mar	7,135	7,090	99	65,397	65,958
Apr	6,692	6,867	103	65,567	65,596
May	8,083	8,217	102	65,522	65,423
Jun	7,799	7,527	97	66,057	64,913
Jul	6,634	6,764	102	66,170	64,403
Aug	7,792	7,697	99	66,490	
Sep	7,346	6,886	94	65,943	
Oct	6,970	6,839	98	65,234	
Nov ³	7,606	7,026	92	65,467	
Dec	7,248	6,580	91	65,892	
Annual Total	87,391	86,041	98		
Total Place- ments ⁴					
Jan	8,772	8,706	99		
Feb	8,811	9,498	108		
Mar	9,025	9,245	102		
Apr	8,358	8,676	104		
May	9,780	10,089	103		
Jun	9,435	9,339	99		
Jul	8,037	8,319	104		
Aug	9,466	9,603	101		
Sep	8,994	8,651	96		
Oct	9,076	8,350	92		
Nov ⁵	9,204	8,704	95		
Dec	9,043	8,197	91		
Annual Total	108,001	107,377	99		

¹ Reported by leading breeders. Coverage may not be 100 percent. Includes expected pullet chicks from eggs sold during the preceding month at the rate of 125 pullet chicks per 30 dozen case of eggs.

² For Dec 2008, includes breeder pullet chicks hatched Sep 2007 through May 2008.

³ Revised 2008 pullet chicks hatched and cumulative placements for June 2009.

⁴ U.S. production of intended placements worldwide.

⁵ Revised 2008 only.

Reliability of Chickens and Eggs Estimates

Survey Procedures: Primary data for the "**Chickens and Eggs**" report are from weekly and/or monthly questionnaires sent to producers. An attempt is made to collect information for layer and egg estimates from each known contractor and independent producer who has at least 30,000 table egg layers, flocks of hatchery supply layers, or pullet only operations with at least 500 pullets. Coverage for operations with less than 30,000 table egg layers are estimated each month based on data reported in December. Approximately 650 contractors, independent egg producers, and pullet only operations are contacted each month. All known hatcheries, approximately 300, are contacted for information on a weekly and/or monthly basis.

Estimating Procedures: Sound statistical methodology is employed to derive estimates from the reported data. All data are analyzed for unusual values. Data from each operation are compared to their own past operating profile and to trends from similar operations. Data for missing operations are estimated based on similar operations or historical data. NASS field offices prepare these estimates by using a combination of survey indications and historic trends. Individual State estimates are reviewed by the Agricultural Statistics Board for reasonableness. Individual hatchery data are summed to State, regional, and U.S. totals.

For chicken hatcheries, chicks hatched consist of all chicks of domesticated breeds including males and chicks destined for hatchery supply flocks and research purposes. Eggs set are eggs in incubators for the purpose of hatching. The relationship of egg-type chicks hatched to chicken inventory and poultry marketings are carefully monitored. The disposition of egg-type chicks hatched prior to placement into the laying flock can vary significantly, which can make comparisons to changes in layer inventory inconsistent over time. Broiler chicks placed are specifically placed on feed for meat production. Intended placement data reported by leading breeders include pullet chicks expected from eggs sold the preceding month. The breeders in this report account for a large percentage of replacement pullets for hatchery supply flocks. Production of replacement pullets by these breeders indicates the number of pullets available to hatchery supply layer flocks several months before the pullets will actually move into the laying flocks. "Hatchery Supply Flocks" include all generations of layers which could lay eggs to supply a hatchery. This includes the generations of parents, grandparents, great-grandparents, pedigree, etc. Also included are research flocks, vaccine flocks, and specific pathogen-free flocks. The broiler cumulative potential placements are a moving total of the intended placements 7-15 months earlier. The egg-type cumulative potential placements of 7-18 months earlier represent the first laying cycle. Molting and additional laying cycles will increase the cumulative potential placements of egg-type hatching flocks.

Revision Policy: The previous month's estimates are subject to revision if late reports or corrected data indicates a different level. Additionally, revisions after the monthly report will be made at the end of the marketing year and published in the annual reports of "**Chickens and Eggs Summary**" and "**Hatchery Production**".

Reliability: Estimates are based on a census of all known contractors and independent producers who have at least 30,000 table egg layers, flocks of hatchery supply layers, pullet only operations with at least 500 pullets, or operating hatcheries and therefore, have no sampling error. However, estimates are subject to errors such as omission, duplication, and mistakes in reporting, recording, and processing the data. While these errors cannot be measured directly, they are minimized through strict quality controls in the data collection process and a careful review of all reported data for consistency and reasonableness.

To assist in evaluating the reliability of the estimates in this report, the "Root Mean Square Error" is shown for selected items in the following table. The "Root Mean Square Error" is a statistical measure based on past performance and is computed using the differences between first and final estimates. The "Root Mean Square Error" for all layers over the past 24 months is 0.5 percent. This means that chances are 2 out of 3 that the final estimate will not be above or below the current estimate of 341 million layers by more than 0.5 percent. Chances are 9 out of 10 that the difference will not exceed 0.9 percent.

Reliability of Layer and Egg Estimates ¹

Item	Root Mean Square Error	90 Percent Confidence Level		Difference Between First and Latest Estimates			Number of Years	
				Average	Smallest	Largest	First Above Latest	First Below Latest
All Layers	<i>Percent</i> 0.5	<i>Percent</i> 0.9	<i>1,000</i> 30	<i>1,000</i> 840	<i>1,000</i> 0	<i>1,000</i> 1,838	<i>Number</i> 5	<i>Number</i> 18
Eggs	0.3	0.6	<i>Million Eggs</i> 0	<i>Million Eggs</i> 20	<i>Million Eggs</i> 0	<i>Million Eggs</i> 39	7	16

¹ Based on data for the past 24 months.

Regional Listing

North Atlantic: CT, ME, MA, NH, NJ, NY, PA, RI, VT.

East North Central: IL, IN, MI, OH, WI.

West North Central: IA, KS, MN, MO, NE, ND, SD.

South Atlantic: DE, FL, GA, MD, NC, SC, VA, WV.

South Central: AL, AR, KY, LA, MS, OK, TN, TX.

West: AK, AZ, CA, CO, HI, ID, MT, NM, NV, OR, UT, WA, WY.

Information Contacts

Listed below are the commodity specialists in the Livestock Branch of the National Agricultural Statistics Service to contact for additional information.

Dan Kerestes, Chief, Livestock Branch (202) 720-3570

Bruce Boess, Head, Poultry and Specialty Commodities Section..... (202) 720-4447

 David Colwell - Cold Storage (202) 720-8784

 Fleming Gibson - Poultry Slaughter, Turkey Hatchery, Turkeys Raised..... (202) 690-3237

 Sharyn Lavender - Broiler Hatchery, Chicken Hatchery, Honey (202) 720-3244

 Kim Linonis - Layers, Eggs (202) 690-8632

 Bruce Boess - Catfish Processing, Catfish Production, Trout Production,
 Census of Aquaculture, Egg Products, Mink (202) 720-4447

ACCESS TO REPORTS!!

For your convenience, there are several ways to obtain NASS reports, data products, and services:

INTERNET ACCESS

All NASS reports are available free of charge on the worldwide Internet. For access, connect to the Internet and go to the NASS Home Page at: www.nass.usda.gov.

E-MAIL SUBSCRIPTION

All NASS reports are available by subscription free of charge direct to your e-mail address. Starting with the NASS Home Page at www.nass.usda.gov, under the right navigation, *Receive reports by Email*, click on **National** or **State**. Follow the instructions on the screen.

PRINTED REPORTS OR DATA PRODUCTS

CALL OUR TOLL-FREE ORDER DESK: 800-999-6779 (U.S. and Canada)
Other areas, please call 703-605-6220 FAX: 703-605-6900
(Visa, MasterCard, check, or money order acceptable for payment.)

ASSISTANCE

For **assistance** with general agricultural statistics or further information about NASS or its products or services, contact the **Agricultural Statistics Hotline** at **800-727-9540**, 7:30 a.m. to 4:00 p.m. ET, or e-mail: nass@nass.usda.gov.

The U.S. Department of Agriculture (USDA) prohibits discrimination in all its programs and activities on the basis of race, color, national origin, age, disability, and where applicable, sex, marital status, familial status, parental status, religion, sexual orientation, genetic information, political beliefs, reprisal, or because all or a part of an individual's income is derived from any public assistance program. (Not all prohibited bases apply to all programs.) Persons with disabilities who require alternative means for communication of program information (Braille, large print, audiotape, etc.) should contact USDA's TARGET Center at (202) 720-2600 (voice and TDD).

To file a complaint of discrimination, write to USDA, Director, Office of Civil Rights, 1400 Independence Avenue, S.W., Washington, D.C. 20250-9410, or call (800) 795-3272 (voice) or (202) 720-6382 (TDD). USDA is an equal opportunity provider and employer.