

Chickens and Eggs

Released February 27, 2009, by the National Agricultural Statistics Service (NASS), Agricultural Statistics Board, U.S. Department of Agriculture. For information on "Layers and Eggs" call Kim Linonis at (202) 690-8632, for "Chicks Hatched" call Sharyn Lavender at (202) 720-3244, office hours 7:30 a.m. to 4:00 p.m. ET.

January Egg Production Up Slightly

U.S. egg production totaled 7.67 billion during January 2009, up slightly from last year. Production included 6.59 billion table eggs, and 1.08 billion hatching eggs, of which 1.00 billion were broiler-type and 72 million were egg-type. The total number of layers during January 2009 averaged 341 million, down 1 percent from last year. January egg production per 100 layers was 2,249 eggs, up 1 percent from January 2008.

All layers in the U.S. on February 1, 2009 totaled 341 million, down 1 percent from last year. The 341 million layers consisted of 284 million layers producing table or market type eggs, 54.4 million layers producing broiler-type hatching eggs, and 3.03 million layers producing egg-type hatching eggs. Rate of lay per day on February 1, 2009, averaged 72.1 eggs per 100 layers, up 2 percent from February 1, 2008.

Egg-Type Chicks Hatched Down 5 Percent

Egg-type chicks hatched during January 2009 totaled 38.1 million, down 5 percent from January 2008. Eggs in incubators totaled 35.2 million on February 1, 2009, down 1 percent from a year ago.

Domestic placements of egg-type pullet chicks for future hatchery supply flocks by leading breeders totaled 240 thousand during January 2009, up 14 percent from January 2008.

Broiler-Type Chicks Hatched Down 5 Percent

Broiler-type chicks hatched during January 2009 totaled 778 million, down 5 percent from January 2008. Eggs in incubators totaled 624 million on February 1, 2009, down 8 percent from a year earlier.

Leading breeders placed 6.73 million broiler-type pullet chicks for future domestic hatchery supply flocks during January 2009, down 4 percent from January 2008.

Contents

Page

U.S. Average Number of Layers on Hand and Egg Production..... 1

U.S. Layers on Hand and Eggs Produced by Type, Forced Molt, and Pullets..... 3

Layers on Hand and Eggs Produced by State..... 5

Egg Production by Type and State 7

Forced Molt 9

U.S. Hatchery Production Summary 10

Egg-Type Hatchery 11

Egg-Type Intended Placements 12

Broiler-Type Hatchery 12

Broiler-Type Intended Placements 14

Reliability of Chickens and Eggs Estimates..... 15

Regional Listing 16

Information Contacts..... 16

**All Layers: Average Number on Hand During the Month,
United States, 2008-09**

Month	2008	2009
	<i>1,000 Layers</i>	<i>1,000 Layers</i>
Dec ^{1 2}	346,225	340,302
Jan	344,737	340,946
Feb	343,299	
Mar	342,017	
Apr	340,838	
May	340,116	
Jun	338,664	
Jul	336,276	
Aug	335,265	
Sep	334,489	
Oct	334,937	
Nov	337,995	

¹ December preceding year.

² Revised.

**Eggs: Production During the Month by Type,
United States, 2008-09 ¹**

Month	Total Eggs		Table Eggs		Hatching Eggs	
	2008	2009	2008	2009	2008	2009
	<i>Million Eggs</i>	<i>Million Eggs</i>	<i>Million Eggs</i>	<i>Million Eggs</i>	<i>Million Eggs</i>	<i>Million Eggs</i>
Dec ^{2 3}	7,808	7,768	6,666	6,701	1,143	1,068
Jan	7,646	7,667	6,498	6,592	1,149	1,075
Feb	7,114		6,034		1,080	
Mar	7,675		6,517		1,159	
Apr	7,373		6,256		1,117	
May	7,564		6,409		1,155	
Jun	7,367		6,262		1,104	
Jul	7,599		6,474		1,125	
Aug	7,551		6,436		1,115	
Sep	7,339		6,272		1,067	
Oct	7,625		6,538		1,088	
Nov	7,490		6,446		1,044	
During Year	90,151		76,811		13,346	

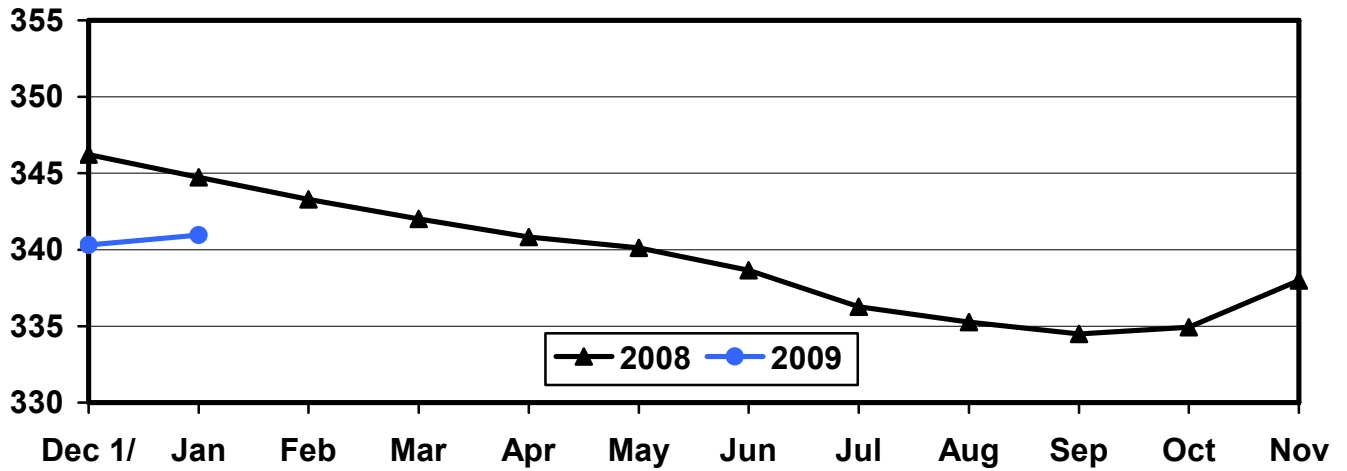
¹ Totals may not add due to rounding.

² December preceding year.

³ Revised.

Average Number of Layers United States, 2008 - 2009 During the Month

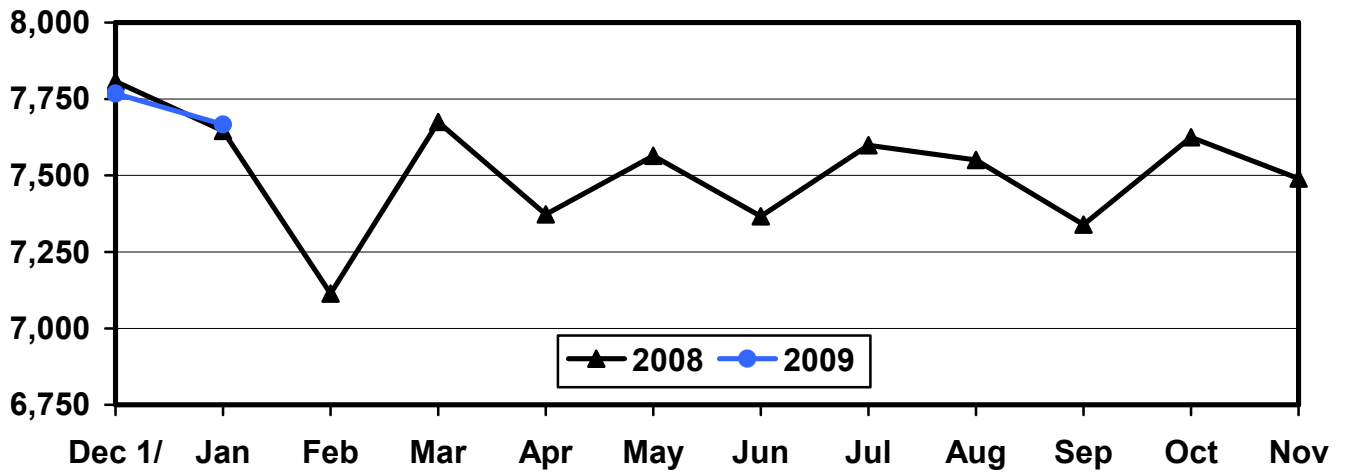
Million Layers



1/ Previous Year

All Egg Production United States, 2008 - 2009 During the Month

Million Eggs



1/ Previous Year

**Layers and Eggs: Layers on Hand and Eggs Produced by Type,
and Forced Molt, United States, December-January 2007-09 ¹**

Item	Unit	2007	2008 ²	2008 as % of 2007
Layers During Dec	1,000			
All Layers		346,225	340,302	98
Table Egg Type		286,089	284,274	99
Hatching Egg Type		60,136	56,028	93
Broiler-Type Hatching		57,187	53,229	93
Egg-Type Hatching		2,949	2,799	95
Eggs per 100 Layers During Dec	Number			
All Layers		2,255	2,283	101
Table Egg Type		2,330	2,357	101
Hatching Egg Type		1,901	1,906	100
Broiler-Type Hatching		1,875	1,881	100
Egg-Type Hatching		2,408	2,394	99
Eggs Produced During Dec	Million			
All Layers		7,808	7,768	99
Table Egg Type		6,666	6,701	101
Hatching Egg Type		1,143	1,068	93
Broiler-Type Hatching		1,072	1,001	93
Egg-Type Hatching		71	67	94
		2008	2009 ²	2009 as % of 2008
Layers on Jan 1	1,000			
All Layers		345,535	340,897	99
Table Egg Type		285,047	284,484	100
Hatching Egg Type		60,488	56,413	93
Broiler-Type Hatching		57,722	53,575	93
Egg-Type Hatching		2,766	2,838	103
Eggs per 100 Layers on Jan 1	Number			
All Layers		72.3	72.9	101
Table Egg Type		74.8	75.3	101
Hatching Egg Type		61.0	60.9	100
Broiler-Type Hatching		60.2	60.0	100
Egg-Type Hatching		76.8	79.0	103
Forced Molt Layers on Jan 1	Percent			
Percent Being Molted		3.0	3.2	106
Percent with Molt Completed		22.7	21.2	93
Layers Sold for Slaughter During Dec	1,000	12,433	12,015	97
Layers Rendered, Died, Destroyed, Composted or Disappeared For Any Reason During Dec	1,000	7,495	6,696	89
Pullets on Jan 1	1,000	104,151	99,721	96
Pullets Added During Dec ³	1,000	21,614	21,208	98

¹ Totals may not add due to rounding.

² Revised.

³ Pullet chicks less than 3 days old added to pullet flocks.

**Layers and Eggs: Layers on Hand and Eggs Produced by Type,
and Forced Molt, United States, January-February 2008-09 ¹**

Item	Unit	2008	2009	2009 as % of 2008
Layers During Jan	1,000			
All Layers		344,737	340,946	99
Table Egg Type		283,901	284,003	100
Hatching Egg Type		60,836	56,943	94
Broiler-Type Hatching		58,011	54,002	93
Egg-Type Hatching		2,825	2,941	104
Eggs per 100 Layers During Jan	Number			
All Layers		2,218	2,249	101
Table Egg Type		2,289	2,321	101
Hatching Egg Type		1,889	1,888	100
Broiler-Type Hatching		1,865	1,857	100
Egg-Type Hatching		2,372	2,448	103
Eggs Produced During Jan	Million			
All Layers		7,646	7,667	100
Table Egg Type		6,498	6,592	101
Hatching Egg Type		1,149	1,075	94
Broiler-Type Hatching		1,082	1,003	93
Egg-Type Hatching		67	72	107
Layers on Feb 1	1,000			
All Layers		343,891	340,956	99
Table Egg Type		282,731	283,507	100
Hatching Egg Type		61,160	57,449	94
Broiler-Type Hatching		58,287	54,415	93
Egg-Type Hatching		2,873	3,034	106
Eggs per 100 Layers on Feb 1	Number			
All Layers		70.6	72.1	102
Table Egg Type		72.8	74.4	102
Hatching Egg Type		60.5	60.7	100
Broiler-Type Hatching		59.7	59.7	100
Egg-Type Hatching		76.8	78.9	103
Forced Molt Layers on Feb 1	Percent			
Percent Being Molted		3.9	3.4	87
Percent with Molt Completed		21.7	21.4	99
Layers Sold for Slaughter During Jan	1,000	14,791	14,122	95
Layers Rendered, Died, Destroyed, Composted or Disappeared For Any Reason During Jan	1,000	7,405	6,799	92
Pullets on Feb 1	1,000	104,581	99,928	96
Pullets Added During Jan ²	1,000	21,535	22,778	106

¹ Totals may not add due to rounding.

² Pullet chicks less than 3 days old added to pullet flocks.

**Layers and Eggs: Layers on Hand and Eggs Produced by State
and United States, During December 2007-08**

State	Table Egg Layers in Flocks 30,000 and Above		All Layers ¹		Eggs per 100 for All Layers ¹	
	2007	2008 ²	2007	2008 ²	2007	2008 ²
	<i>1,000</i>	<i>1,000</i>	<i>1,000</i>	<i>1,000</i>	<i>Number</i>	<i>Number</i>
AL	1,402	1,372	9,527	9,393	1,942	1,948
AR	4,106	3,688	13,817	12,790	1,976	2,002
CA	20,405	19,838	20,827	20,145	2,233	2,274
CO	3,326	3,507	3,863	3,955	2,382	2,478
CT	2,922	2,779	2,983	2,835	2,380	2,328
FL	10,480	9,955	10,948	10,340	2,274	2,331
GA	9,611	9,677	19,184	18,391	2,132	2,126
HI	341	311	360	338	1,778	1,775
IL	4,935	5,248	5,162	5,464	2,344	2,324
IN	23,613	23,552	24,351	24,247	2,308	2,310
IA	53,257	52,803	54,134	53,718	2,244	2,288
ME	3,816	3,517	3,888	3,601	2,058	2,222
MD	2,587	2,160	2,756	2,328	2,177	2,191
MI	8,925	9,437	9,082	9,594	2,477	2,460
MN	9,782	9,558	10,232	10,065	2,375	2,335
MS	1,621	1,577	6,410	6,045	2,028	2,068
MO	5,646	5,716	6,995	6,853	2,287	2,364
NE	10,184	9,685	10,234	9,735	2,384	2,404
NY	3,708	3,942	3,921	4,165	2,499	2,473
NC	4,985	5,373	12,546	12,520	2,104	2,109
OH	26,228	26,996	26,750	27,406	2,344	2,386
OR	2,469	2,386	2,627	2,513	2,589	2,587
PA	20,589	20,645	21,686	21,697	2,467	2,452
SC	3,326	3,099	4,554	4,420	2,196	2,195
SD	2,749	2,415	2,809	2,455	2,243	2,403
TX	14,415	14,066	19,057	18,311	2,288	2,294
VA	1,343	1,419	3,163	2,958	2,055	2,130
WA	5,499	5,817	5,560	5,932	2,212	2,411
WI	4,269	4,118	4,695	4,682	2,364	2,413
Oth Sts ³	15,274	15,137	24,104	23,396	2,191	2,210
US	281,813	279,793	346,225	340,302	2,255	2,283

¹ Includes all layers and eggs produced in both table egg and hatching egg flocks regardless of size.

² Revised.

³ Not published separately to avoid disclosing data for individual operations.

**Layers and Eggs: Layers on Hand and Eggs Produced by State
and United States, During January 2008-09**

State	Table Egg Layers in Flocks 30,000 and Above		All Layers ¹		Eggs per 100 for All Layers ¹	
	2008	2009	2008	2009	2008	2009
	<i>1,000</i>	<i>1,000</i>	<i>1,000</i>	<i>1,000</i>	<i>Number</i>	<i>Number</i>
AL	1,380	1,384	9,583	9,405	1,931	1,914
AR	3,776	3,575	13,777	12,923	1,894	1,989
CA	19,698	19,630	19,994	19,938	2,166	2,242
CO	3,385	3,456	3,927	3,971	2,368	2,493
CT	2,875	2,729	2,933	2,786	2,284	2,297
FL	10,405	9,829	10,907	10,173	2,283	2,261
GA	9,606	9,479	19,175	18,303	2,096	2,098
HI	338	312	361	339	1,801	1,770
IL	5,090	5,145	5,317	5,361	2,257	2,201
IN	23,663	23,521	24,401	24,219	2,238	2,279
IA	53,326	52,819	54,269	53,753	2,233	2,275
ME	3,994	3,538	4,066	3,622	2,115	2,126
MD	2,606	2,055	2,748	2,199	2,220	2,092
MI	8,868	9,437	9,032	9,601	2,403	2,458
MN	9,769	9,621	10,243	10,127	2,343	2,311
MS	1,614	1,509	6,435	5,967	1,974	2,028
MO	5,524	5,889	6,920	7,184	2,327	2,325
NE	10,182	9,623	10,232	9,673	2,365	2,409
NY	3,672	3,824	3,890	4,047	2,468	2,471
NC	5,059	5,461	12,802	12,638	2,062	2,089
OH	25,950	27,102	26,402	27,527	2,295	2,300
OR	2,498	2,341	2,649	2,479	2,567	2,622
PA	20,415	21,043	21,517	22,147	2,431	2,434
SC	3,370	3,169	4,606	4,486	2,106	2,140
SD	2,495	2,455	2,555	2,495	2,192	2,365
TX	14,005	13,896	18,747	18,270	2,230	2,239
VA	1,243	1,425	3,077	3,003	1,917	2,031
WA	5,450	5,932	5,516	6,047	2,212	2,398
WI	4,312	4,194	4,712	4,773	2,292	2,305
Oth Sts ²	15,141	15,119	23,944	23,490	2,172	2,180
US	279,709	279,512	344,737	340,946	2,218	2,249

¹ Includes all layers and eggs produced in both table egg and hatching egg flocks regardless of size.

² Not published separately to avoid disclosing data for individual operations.

**Egg Production: By Type, State, and United States,
December 2007-08 ¹**

State	Total Production		Table Eggs ²		Hatching Eggs ²	
	2007	2008 ³	2007	2008 ³	2007	2008 ³
	<i>Million Eggs</i>	<i>Million Eggs</i>	<i>Million Eggs</i>	<i>Million Eggs</i>	<i>Million Eggs</i>	<i>Million Eggs</i>
AL	185	183	33	34	152	149
AR	273	256	96	88	177	168
CA	465	458				
CO	92	98				
CT	71	66				
FL	249	241	241	235	8	6
GA	409	391	224	224	185	167
HI	6.4	6.0	6.4	6.0	0	0
IL	121	127	117	124	4	3
IN	562	560	549	547	13	13
IA	1,215	1,229	1,200	1,215	15	14
ME	80	80				
MD	60	51	58	49	2	2
MI	225	236				
MN	243	235	235	226	8	9
MS	130	125	40	39	90	86
MO	160	162				
NE	244	234	244	234	0	0
NY	98	103				
NC	264	264	122	131	142	133
OH	627	654				
OR	68	65	66	63	2	2
PA	535	532	515	515	20	17
SC	100	97	78	74	22	23
SD	63	59	63	59	0	0
TX	436	420				
VA	65	63	32	34	33	29
WA	123	143				
WI	111	113				
Oth Sts ⁴	528	517	384	384	145	134
US	7,808	7,768	6,666	6,701	1,143	1,068

¹ Totals may not add due to rounding.

² Data by type of flock not shown for some States to avoid disclosing individual operations, data included in US totals.

³ Revised.

⁴ Not published separately to avoid disclosing data for individual operations.

**Egg Production: By Type, State, and United States,
January 2008-09¹**

State	Total Production		Table Eggs ²		Hatching Eggs ²	
	2008	2009	2008	2009	2008	2009
	<i>Million Eggs</i>	<i>Million Eggs</i>	<i>Million Eggs</i>	<i>Million Eggs</i>	<i>Million Eggs</i>	<i>Million Eggs</i>
AL	185	180	32	32	153	148
AR	261	257	81	87	180	170
CA	433	447				
CO	93	99				
CT	67	64				
FL	249	230	239	225	10	5
GA	402	384	217	215	185	169
HI	6.5	6.0	6.5	6.0	0	0
IL	120	118	116	115	4	3
IN	546	552	533	539	13	13
IA	1,212	1,223	1,197	1,208	15	15
ME	86	77				
MD	61	46	59	44	2	2
MI	217	236				
MN	240	234	232	225	8	9
MS	127	121	37	37	90	84
MO	161	167				
NE	242	233	242	233	0	0
NY	96	100				
NC	264	264	123	134	141	130
OH	606	633				
OR	68	65	66	63	2	2
PA	523	539	503	519	20	20
SC	97	96	75	72	22	24
SD	56	59	56	59	0	0
TX	418	409				
VA	59	61	27	32	32	29
WA	122	145				
WI	108	110				
Oth Sts ³	520	512	377	378	144	134
US	7,646	7,667	6,498	6,592	1,149	1,075

¹ Totals may not add due to rounding.

² Data by type of flock not shown for some States to avoid disclosing individual operations, data included in US totals.

³ Not published separately to avoid disclosing data for individual operations.

**Forced Molt: Percent of All Layers by Month,
United States, 2008-09¹**

Month	Percent Being Molted		Percent with Molt Completed	
	2008	2009	2008	2009
	<i>Percent</i>	<i>Percent</i>	<i>Percent</i>	<i>Percent</i>
Jan ²	3.0	3.2	22.7	21.2
Feb	3.9	3.4	21.7	21.4
Mar	2.4		22.1	
Apr	2.8		21.3	
May	4.1		20.8	
Jun	3.7		20.9	
Jul	3.4		20.8	
Aug	3.9		21.2	
Sep	3.9		20.8	
Oct	3.7		21.9	
Nov	2.1		22.7	
Dec	1.9		22.1	

¹ As of first of month.

² Revised 2009 only.

**Forced Molt: Percent of All Layers by State
and United States, February 2008-09¹**

State	Percent Being Molted		Percent with Molt Completed	
	2008	2009	2008	2009
	<i>Percent</i>	<i>Percent</i>	<i>Percent</i>	<i>Percent</i>
AL	1.5	1.5	6.0	7.0
AR	3.0	1.5	11.5	8.0
CA	7.0	4.0	31.5	29.5
CO	4.0	7.5	20.0	18.5
CT	0.0	0.0	14.5	16.5
FL	8.0	7.0	31.5	32.5
GA	1.5	4.5	13.5	9.5
HI	7.0	10.5	59.0	55.0
IL	4.5	8.5	31.5	30.0
IN	4.0	4.0	32.0	36.5
IA	6.5	2.5	32.5	36.0
ME	0.0	0.0	0.0	0.0
MD	6.0	22.0	12.0	7.5
MI	3.5	1.0	17.5	25.0
MN	2.5	2.5	27.5	26.0
MS	3.5	2.0	9.0	11.0
MO	1.5	2.0	13.5	8.5
NE	0.0	0.0	11.5	2.5
NY	2.5	1.0	7.5	6.0
NC	0.5	0.0	7.5	12.0
OH	2.5	4.5	15.0	17.5
OR	2.5	2.0	27.5	30.0
PA	0.5	2.5	12.5	10.5
SC	8.0	8.5	24.0	11.5
SD	5.0	6.5	18.0	34.0
TX	5.0	4.5	24.5	18.5
VA	3.5	0.0	23.5	11.0
WA	7.5	6.5	39.5	28.0
WI	7.5	0.0	32.5	23.5
Oth Sts ²	4.1	4.2	21.4	21.6
US	3.9	3.4	21.7	21.4

¹ As of first of month.

² Not published separately to avoid disclosing data for individual operations.

**Hatchery Production: Eggs in Incubators, Chicks Hatched,
and Placements by Type, United States, January-February 2008-09**

Item	2008	2009	2009 as % of 2008
	<i>1,000</i>	<i>1,000</i>	<i>Percent</i>
Egg-Type			
Eggs in Incubators on Feb 1	35,539	35,198	99
Chicks Hatched During Jan	40,167	38,083	95
Chicks Hatched Jan thru Jan	40,167	38,083	95
Pullets Hatched During Jan for Intended Placements in Hatchery Supply Flocks	210	240	114
7-18 Months Earlier ¹	3,007	2,928	97
Broiler-Type			
Eggs in Incubators on Feb 1	674,636	623,584	92
Chicks Hatched During Jan	821,866	778,401	95
Chicks Hatched Jan thru Jan	821,866	778,401	95
Pullets Hatched During Jan for Intended Placements in Hatchery Supply Flocks	7,012	6,730	96
7-15 Months Earlier ²	65,333	66,073	101

¹ 2009 includes pullet chicks hatched Jul 2007 through Jun 2008.

² 2009 includes pullet chicks hatched Oct 2007 through Jun 2008.

**Egg-Type Eggs in Incubators: By Region and United States,
February 1, 2008-09**

Region ¹	2008	2009	2009 as % of 2008
	<i>1,000</i>	<i>1,000</i>	<i>Percent</i>
North Atlantic	5,000	5,222	104
E North Central	7,087	7,037	99
W North Central	8,638	8,482	98
South Atlantic	4,251	4,186	98
South Central	5,616	5,625	100
West	4,947	4,646	94
US	35,539	35,198	99

¹ Regional listing on page 16.

**Egg-Type Chicks Hatched: By State and United States,
January 2008-09**

State	During January			Jan-Jan		
	2008	2009	2009 as % of 2008	2008	2009	2009 as % of 2008
	<i>1,000</i>	<i>1,000</i>	<i>Percent</i>	<i>1,000</i>	<i>1,000</i>	<i>Percent</i>
GA	2,357	2,194	93	2,357	2,194	93
IN	5,964	5,779	97	5,964	5,779	97
IA	7,375	6,925	94	7,375	6,925	94
MN	849	1,231	145	849	1,231	145
PA	4,725	5,087	108	4,725	5,087	108
Oth Sts ¹	18,897	16,867	89	18,897	16,867	89
US	40,167	38,083	95	40,167	38,083	95

¹ Not published separately to avoid disclosing data for individual operations.

Egg-Type Chicks Hatched: By Month, United States, 2008-09

Month	By Months			Cumulative		
	2008	2009	2009 as % of 2008	2008	2009	2009 as % of 2008
	<i>1,000</i>	<i>1,000</i>	<i>Percent</i>	<i>1,000</i>	<i>1,000</i>	<i>Percent</i>
Jan	40,167	38,083	95	40,167	38,083	95
Feb	37,549			77,716		
Mar	39,547			117,263		
Apr	41,051			158,314		
May	42,724			201,038		
Jun	42,538			243,576		
Jul	37,929			281,505		
Aug	36,301			317,806		
Sep	36,428			354,234		
Oct	39,998			394,232		
Nov	36,607			430,839		
Dec	36,393			467,232		

**Intended Placements: Egg-Type Pullet Chicks for Hatchery Supply
Flocks by Month and Total, United States, 2008-09¹**

Month	Pullet Chicks Hatched		2009 as % of 2008	Cumulative Potential Plcmts Relative to Current Supply Flocks 7-18 Months Earlier ²	
	2008	2009		2008	2009
	<i>1,000</i>	<i>1,000</i>	<i>Percent</i>	<i>1,000</i>	<i>1,000</i>
Jan	210	240		3,007	2,928
Feb	280			2,871	2,989
Mar	245			2,865	2,990
Apr	264			2,905	2,900
May	227			2,867	2,989
Jun	231			2,942	3,025
Jul	244			2,982	2,979
Aug	279			2,927	3,009
Sep	210			3,042	
Oct	273			2,971	
Nov	317			2,961	
Dec	199			2,997	
Total	2,979				

¹ Reported by leading breeders. Coverage may not be 100 percent. Includes expected pullet chicks from eggs sold during the preceding month at the rate of 125 pullet chicks per 30 dozen case of eggs.

² For January 2009, includes breeder pullet chicks hatched Jul 2007 through Jun 2008. The 7-18 months represent the first laying cycle. Molting and additional laying cycles will increase the cumulative potential placements.

**Broiler-Type Eggs in Incubators: By Region
and United States, February 1, 2008-09**

Region ¹	2008	2009	2009 as % of 2008
	<i>1,000</i>	<i>1,000</i>	<i>Percent</i>
North Atlantic	12,958	11,811	91
E North Central	12,141	11,436	94
W North Central	29,629	27,937	94
South Atlantic	249,975	232,117	93
South Central	345,795	318,343	92
West	24,138	21,940	91
US	674,636	623,584	92

¹ Regional listing on page 16.

**Broiler-Type Chicks Hatched: By State
and United States, January 2008-09**

State	During January			Jan-Jan		
	2008	2009	2009 as % of 2008	2008	2009	2009 as % of 2008
	<i>1,000</i>	<i>1,000</i>	<i>Percent</i>	<i>1,000</i>	<i>1,000</i>	<i>Percent</i>
AL	118,123	108,270	92	118,123	108,270	92
AR	104,378	90,672	87	104,378	90,672	87
DE	14,870	12,360	83	14,870	12,360	83
FL	5,013	3,871	77	5,013	3,871	77
GA	127,761	121,074	95	127,761	121,074	95
KY	27,966	27,937	100	27,966	27,937	100
LA	13,896	12,992	93	13,896	12,992	93
MD	32,983	32,553	99	32,983	32,553	99
MS	69,781	65,269	94	69,781	65,269	94
NC	72,808	69,749	96	72,808	69,749	96
OK	23,889	24,307	102	23,889	24,307	102
PA	15,217	14,251	94	15,217	14,251	94
SC	20,191	20,111	100	20,191	20,111	100
TX	56,404	57,257	102	56,404	57,257	102
VA	22,550	22,121	98	22,550	22,121	98
CA, MO, TN, & WV	72,283	72,171	100	72,283	72,171	100
19 Sts ¹	798,113	754,965	95	798,113	754,965	95
Oth Sts ²	23,753	23,436	99	23,753	23,436	99
US	821,866	778,401	95	821,866	778,401	95

¹ States in the weekly hatchery production estimating program.

² Not published separately to avoid disclosing data for individual operations.

Broiler-Type Chicks Hatched: By Month, United States, 2008-09

Month	By Months			Cumulative		
	2008	2009	2009 as % of 2008	2008	2009	2009 as % of 2008
	<i>1,000</i>	<i>1,000</i>	<i>Percent</i>	<i>1,000</i>	<i>1,000</i>	<i>Percent</i>
Jan	821,866	778,401	95	821,866	778,401	95
Feb	771,197			1,593,063		
Mar	832,899			2,425,962		
Apr	797,481			3,223,443		
May	823,718			4,047,161		
Jun	806,202			4,853,363		
Jul	806,555			5,659,918		
Aug	799,625			6,459,543		
Sep	756,565			7,216,108		
Oct	742,121			7,958,229		
Nov	705,587			8,663,816		
Dec	779,160			9,442,976		

**Intended Placements: Broiler-Type Pullet Chicks for Hatchery
Supply Flocks by Month and Total, 2008-09 ¹**

Month	Pullet Chicks Hatched		2009 as % of 2008	Cumulative Potential Plcmts Relative to Current Supply Flocks 7-15 Months Earlier ²	
	2008	2009		2008	2009
	<i>1,000</i>	<i>1,000</i>	<i>Percent</i>	<i>1,000</i>	<i>1,000</i>
US Place- ments					
Jan	7,012	6,730	96	65,333	66,073
Feb	7,536			65,223	65,867
Mar	7,090			65,397	65,958
Apr	6,867			65,567	65,596
May	8,217			65,522	65,423
Jun	7,527			66,057	64,913
Jul	6,764			66,170	64,403
Aug	7,697			66,490	64,266
Sep	6,886			65,943	
Oct	6,839			65,234	
Nov	7,026			65,467	
Dec	6,580			65,892	
Annual Total	86,041				
Total Place- ments ³					
Jan	8,706	8,114	93		
Feb	9,498				
Mar	9,245				
Apr	8,676				
May	10,089				
Jun	9,339				
Jul	8,319				
Aug	9,603				
Sep	8,651				
Oct	8,350				
Nov	8,704				
Dec	8,197				
Annual Total	107,377				

¹ Reported by leading breeders. Coverage may not be 100 percent. Includes expected pullet chicks from eggs sold during the preceding month at the rate of 125 pullet chicks per 30 dozen case of eggs.

² For Jan 2009, includes breeder pullet chicks hatched Oct 2007 through Jun 2008.

³ U.S. production of intended placements worldwide.

Reliability of Chickens and Eggs Estimates

Survey Procedures: Primary data for the "**Chickens and Eggs**" report are from weekly and/or monthly questionnaires sent to producers. An attempt is made to collect information for layer and egg estimates from each known contractor and independent producer who has at least 30,000 table egg layers, flocks of hatchery supply layers, or pullet only operations with at least 500 pullets. Coverage for operations with less than 30,000 table egg layers are estimated each month based on data reported in December. Approximately 650 contractors, independent egg producers, and pullet only operations are contacted each month. All known hatcheries, approximately 300, are contacted for information on a weekly and/or monthly basis.

Estimating Procedures: Sound statistical methodology is employed to derive estimates from the reported data. All data are analyzed for unusual values. Data from each operation are compared to their own past operating profile and to trends from similar operations. Data for missing operations are estimated based on similar operations or historical data. NASS field offices prepare these estimates by using a combination of survey indications and historic trends. Individual State estimates are reviewed by the Agricultural Statistics Board for reasonableness. Individual hatchery data are summed to State, regional, and U.S. totals.

For chicken hatcheries, chicks hatched consist of all chicks of domesticated breeds including males and chicks destined for hatchery supply flocks and research purposes. Eggs set are eggs in incubators for the purpose of hatching. The relationship of egg-type chicks hatched to chicken inventory and poultry marketings are carefully monitored. The disposition of egg-type chicks hatched prior to placement into the laying flock can vary significantly, which can make comparisons to changes in layer inventory inconsistent over time. Broiler chicks placed are specifically placed on feed for meat production. Intended placement data reported by leading breeders include pullet chicks expected from eggs sold the preceding month. The breeders in this report account for a large percentage of replacement pullets for hatchery supply flocks. Production of replacement pullets by these breeders indicates the number of pullets available to hatchery supply layer flocks several months before the pullets will actually move into the laying flocks. "Hatchery Supply Flocks" include all generations of layers which could lay eggs to supply a hatchery. This includes the generations of parents, grandparents, great-grandparents, pedigree, etc. Also included are research flocks, vaccine flocks, and specific pathogen-free flocks. The broiler cumulative potential placements are a moving total of the intended placements 7-15 months earlier. The egg-type cumulative potential placements of 7-18 months earlier represent the first laying cycle. Molting and additional laying cycles will increase the cumulative potential placements of egg-type hatching flocks.

Revision Policy: The previous month's estimates are subject to revision if late reports or corrected data indicates a different level. Additionally, revisions after the monthly report will be made at the end of the marketing year and published in the annual reports of "**Chickens and Eggs Summary**" and "**Hatchery Production**".

Reliability: Estimates are based on a census of all known contractors and independent producers who have at least 30,000 table egg layers, flocks of hatchery supply layers, pullet only operations with at least 500 pullets, or operating hatcheries and therefore, have no sampling error. However, estimates are subject to errors such as omission, duplication, and mistakes in reporting, recording, and processing the data. While these errors cannot be measured directly, they are minimized through strict quality controls in the data collection process and a careful review of all reported data for consistency and reasonableness.

To assist in evaluating the reliability of the estimates in this report, the "Root Mean Square Error" is shown for selected items in the following table. The "Root Mean Square Error" is a statistical measure based on past performance and is computed using the differences between first and final estimates. The "Root Mean Square Error" for all layers over the past 24 months is 1.1 percent. This means that chances are 2 out of 3 that the final estimate will not be above or below the current estimate of 341 million layers by more than 1.1 percent. Chances are 9 out of 10 that the difference will not exceed 2.0 percent.

Reliability of Layer and Egg Estimates ¹

Item	Root Mean Square Error	90 Percent Confidence Level		Difference Between First and Latest Estimates			Number of Years	
				Average	Smallest	Largest	First Above Latest	First Below Latest
All Layers	<i>Percent</i> 1.1	<i>Percent</i> 2.0	<i>1,000</i> 69	<i>1,000</i> 1,862	<i>1,000</i> 23	<i>1,000</i> 4,033	<i>Number</i> 7	<i>Number</i> 17
Eggs	0.7	1.3	<i>Million Eggs</i> 1	<i>Million Eggs</i> 41	<i>Million Eggs</i> 0	<i>Million Eggs</i> 86	7	16

¹ Based on data for the past 24 months.

Regional Listing

North Atlantic: CT, ME, MA, NH, NJ, NY, PA, RI, VT.

East North Central: IL, IN, MI, OH, WI.

West North Central: IA, KS, MN, MO, NE, ND, SD.

South Atlantic: DE, FL, GA, MD, NC, SC, VA, WV.

South Central: AL, AR, KY, LA, MS, OK, TN, TX.

West: AK, AZ, CA, CO, HI, ID, MT, NM, NV, OR, UT, WA, WY.

Information Contacts

Listed below are the commodity specialists in the Livestock Branch of the National Agricultural Statistics Service to contact for additional information.

Dan Kerestes, Chief, Livestock Branch (202) 720-3570

Bruce Boess, Head, Poultry and Specialty Commodities Section..... (202) 720-4447

 David Colwell - Cold Storage (202) 720-8784

 Fleming Gibson - Poultry Slaughter, Turkey Hatchery, Turkeys Raised..... (202) 690-3237

 Sharyn Lavender - Broiler Hatchery, Chicken Hatchery, Honey (202) 720-3244

 Kim Linonis - Layers, Eggs (202) 690-8632

 Bruce Boess - Catfish Processing, Catfish Production, Trout Production,
 Census of Aquaculture, Egg Products, Mink (202) 720-4447

ACCESS TO REPORTS!!

For your convenience, there are several ways to obtain NASS reports, data products, and services:

INTERNET ACCESS

All NASS reports are available free of charge on the worldwide Internet. For access, connect to the Internet and go to the NASS Home Page at: www.nass.usda.gov.

E-MAIL SUBSCRIPTION

All NASS reports are available by subscription free of charge direct to your e-mail address. Starting with the NASS Home Page at www.nass.usda.gov, under the right navigation, *Receive reports by Email*, click on **National** or **State**. Follow the instructions on the screen.

PRINTED REPORTS OR DATA PRODUCTS

CALL OUR TOLL-FREE ORDER DESK: 800-999-6779 (U.S. and Canada)
Other areas, please call 703-605-6220 FAX: 703-605-6900
(Visa, MasterCard, check, or money order acceptable for payment.)

ASSISTANCE

For **assistance** with general agricultural statistics or further information about NASS or its products or services, contact the **Agricultural Statistics Hotline** at **800-727-9540**, 7:30 a.m. to 4:00 p.m. ET, or e-mail: nass@nass.usda.gov.

The U.S. Department of Agriculture (USDA) prohibits discrimination in all its programs and activities on the basis of race, color, national origin, age, disability, and where applicable, sex, marital status, familial status, parental status, religion, sexual orientation, genetic information, political beliefs, reprisal, or because all or a part of an individual's income is derived from any public assistance program. (Not all prohibited bases apply to all programs.) Persons with disabilities who require alternative means for communication of program information (Braille, large print, audiotape, etc.) should contact USDA's TARGET Center at (202) 720-2600 (voice and TDD).

To file a complaint of discrimination, write to USDA, Director, Office of Civil Rights, 1400 Independence Avenue, S.W., Washington, D.C. 20250-9410, or call (800) 795-3272 (voice) or (202) 720-6382 (TDD). USDA is an equal opportunity provider and employer.