

Chickens and Eggs

Released March 23, 2009, by the National Agricultural Statistics Service (NASS), Agricultural Statistics Board, U.S. Department of Agriculture. For information on "Layers and Eggs" call Kim Linonis at (202) 690-8632, for "Chicks Hatched" call Sharyn Lavender at (202) 720-3244, office hours 7:30 a.m. to 4:00 p.m. ET.

February Egg Production Down 3 Percent

U.S. egg production totaled 6.89 billion during February 2009, down 3 percent from last year. Production included 5.91 billion table eggs, and 985 million hatching eggs, of which 917 million were broiler-type and 68 million were egg-type. The total number of layers during February 2009 averaged 341 million, down 1 percent from last year. February egg production per 100 layers was 2,023 eggs, down 2 percent from February 2008.

All layers in the U.S. on March 1, 2009 totaled 341 million, down 1 percent from last year. The 341 million layers consisted of 283 million layers producing table or market type eggs, 54.3 million layers producing broiler-type hatching eggs, and 3.07 million layers producing egg-type hatching eggs. Rate of lay per day on March 1, 2009, averaged 72.3 eggs per 100 layers, up slightly from March 1, 2008.

Egg-Type Chicks Hatched Down 2 Percent

Egg-type chicks hatched during February 2009 totaled 36.9 million, down 2 percent from February 2008. Eggs in incubators totaled 37.2 million on March 1, 2009, up 2 percent from a year ago.

Domestic placements of egg-type pullet chicks for future hatchery supply flocks by leading breeders totaled 256 thousand during February 2009, down 9 percent from February 2008.

Broiler-Type Chicks Hatched Down 9 Percent

Broiler-type chicks hatched during February 2009 totaled 701 million, down 9 percent from February 2008. Eggs in incubators totaled 634 million on March 1, 2009, down 7 percent from a year earlier.

Leading breeders placed 7.22 million broiler-type pullet chicks for future domestic hatchery supply flocks during February 2009, down 4 percent from February 2008.

Contents

Page

| | |
|--|----|
| U.S. Average Number of Layers on Hand and Egg Production..... | 1 |
| U.S. Layers on Hand and Eggs Produced by Type, Forced Molt, and Pullets..... | 3 |
| Layers on Hand and Eggs Produced by State..... | 5 |
| Egg Production by Type and State | 7 |
| Forced Molt | 9 |
| U.S. Hatchery Production Summary | 10 |
| Egg-Type Hatchery | 11 |
| Egg-Type Intended Placements | 12 |
| Broiler-Type Hatchery | 12 |
| Broiler-Type Intended Placements..... | 14 |
| Reliability of Chickens and Eggs Estimates..... | 15 |
| Regional Listing..... | 16 |
| Terms and Definitions of Chickens and Eggs Estimates..... | 16 |
| Information Contacts..... | 16 |

**All Layers: Average Number on Hand During the Month,
United States, 2008-09**

| Month | 2008 | 2009 |
|------------------|---------------------|---------------------|
| | <i>1,000 Layers</i> | <i>1,000 Layers</i> |
| Dec ¹ | 346,225 | 340,302 |
| Jan ² | 344,737 | 340,936 |
| Feb | 343,299 | 340,752 |
| Mar | 342,017 | |
| Apr | 340,838 | |
| May | 340,116 | |
| Jun | 338,664 | |
| Jul | 336,276 | |
| Aug | 335,265 | |
| Sep | 334,489 | |
| Oct | 334,937 | |
| Nov | 337,995 | |

¹ December preceding year.

² Revised 2009 only.

**Eggs: Production During the Month by Type,
United States, 2008-09**

| Month | Total Eggs ¹ | | Table Eggs | | Hatching Eggs | |
|--------------------------|-------------------------|---------------------|---------------------|---------------------|---------------------|---------------------|
| | 2008 | 2009 | 2008 | 2009 | 2008 | 2009 |
| | <i>Million Eggs</i> | <i>Million Eggs</i> | <i>Million Eggs</i> | <i>Million Eggs</i> | <i>Million Eggs</i> | <i>Million Eggs</i> |
| Dec ² | 7,808 | 7,768 | 6,666 | 6,701 | 1,143 | 1,068 |
| Jan ³ | 7,646 | 7,666 | 6,498 | 6,591 | 1,149 | 1,075 |
| Feb | 7,114 | 6,893 | 6,034 | 5,907 | 1,080 | 985 |
| Mar | 7,675 | | 6,517 | | 1,159 | |
| Apr | 7,373 | | 6,256 | | 1,117 | |
| May | 7,564 | | 6,409 | | 1,155 | |
| Jun | 7,367 | | 6,262 | | 1,104 | |
| Jul | 7,599 | | 6,474 | | 1,125 | |
| Aug | 7,551 | | 6,436 | | 1,115 | |
| Sep | 7,339 | | 6,272 | | 1,067 | |
| Oct | 7,625 | | 6,538 | | 1,088 | |
| Nov | 7,490 | | 6,446 | | 1,044 | |
| During Year ¹ | 90,151 | | 76,811 | | 13,346 | |

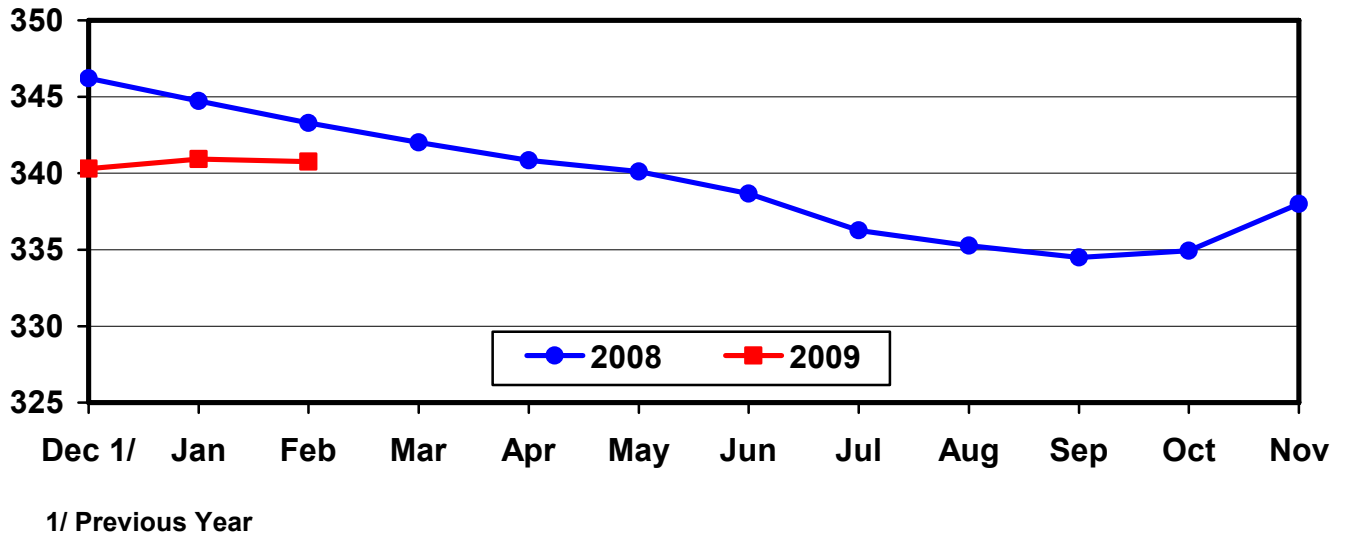
¹ Totals may not add due to rounding.

² December preceding year.

³ Revised 2009 only.

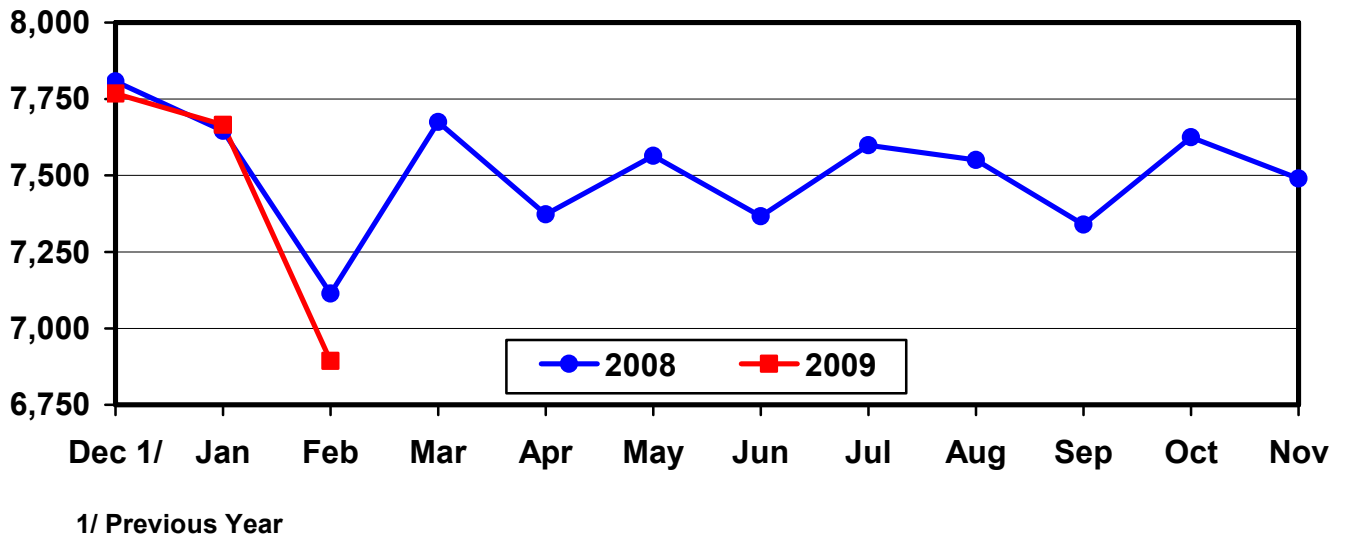
U.S. Average Number of Layers During the Month

Million Layers



U.S. All Egg Production During the Month

Million Eggs



**Layers and Eggs: Layers on Hand and Eggs Produced by Type,
and Forced Molt, United States, January-February 2008-09**

| Item | Unit | 2008 | 2009 ¹ | 2009 as % of 2008 |
|--|---------|---------|-------------------|-------------------------|
| Layers During Jan ² | 1,000 | | | |
| All Layers | | 344,737 | 340,936 | 99 |
| Table Egg Type | | 283,901 | 283,993 | 100 |
| Hatching Egg Type | | 60,836 | 56,943 | 94 |
| Broiler-Type Hatching | | 58,011 | 54,002 | 93 |
| Egg-Type Hatching | | 2,825 | 2,941 | 104 |
| Eggs per 100 Layers During Jan | Number | | | |
| All Layers | | 2,218 | 2,249 | 101 |
| Table Egg Type | | 2,289 | 2,321 | 101 |
| Hatching Egg Type | | 1,889 | 1,888 | 100 |
| Broiler-Type Hatching | | 1,865 | 1,857 | 100 |
| Egg-Type Hatching | | 2,372 | 2,448 | 103 |
| Eggs Produced During Jan ² | Million | | | |
| All Layers | | 7,646 | 7,666 | 100 |
| Table Egg Type | | 6,498 | 6,591 | 101 |
| Hatching Egg Type | | 1,149 | 1,075 | 94 |
| Broiler-Type Hatching | | 1,082 | 1,003 | 93 |
| Egg-Type Hatching | | 67 | 72 | 107 |
| Layers on Feb 1 ² | 1,000 | | | |
| All Layers | | 343,891 | 340,936 | 99 |
| Table Egg Type | | 282,731 | 283,487 | 100 |
| Hatching Egg Type | | 61,160 | 57,449 | 94 |
| Broiler-Type Hatching | | 58,287 | 54,415 | 93 |
| Egg-Type Hatching | | 2,873 | 3,034 | 106 |
| Eggs per 100 Layers on Feb 1 | Number | | | |
| All Layers | | 70.6 | 72.1 | 102 |
| Table Egg Type | | 72.8 | 74.4 | 102 |
| Hatching Egg Type | | 60.5 | 60.7 | 100 |
| Broiler-Type Hatching | | 59.7 | 59.7 | 100 |
| Egg-Type Hatching | | 76.8 | 78.9 | 103 |
| Forced Molt Layers on Feb 1 | Percent | | | |
| Percent Being Molted | | 3.9 | 3.4 | 87 |
| Percent with Molt Completed | | 21.7 | 21.4 | 99 |
| Layers Sold for Slaughter During Jan | 1,000 | 14,791 | 14,120 | 95 |
| Layers Rendered, Died, Destroyed, Composted or Disappeared For Any Reason During Jan | 1,000 | 7,405 | 6,709 | 91 |
| Pullets on Feb 1 | 1,000 | 104,581 | 100,856 | 96 |
| Pullets Added During Jan ³ | 1,000 | 21,535 | 22,435 | 104 |

¹ Revised.

² Totals may not add due to rounding.

³ Pullet chicks less than 3 days old added to pullet flocks.

**Layers and Eggs: Layers on Hand and Eggs Produced by Type,
and Forced Molt, United States, February-March 2008-09**

| Item | Unit | 2008 | 2009 | 2009 as % of 2008 |
|--|---------|---------|---------|-------------------------|
| Layers During Feb ¹ | 1,000 | | | |
| All Layers | | 343,299 | 340,752 | 99 |
| Table Egg Type | | 282,213 | 283,347 | 100 |
| Hatching Egg Type | | 61,086 | 57,405 | 94 |
| Broiler-Type Hatching | | 58,205 | 54,348 | 93 |
| Egg-Type Hatching | | 2,881 | 3,057 | 106 |
| Eggs per 100 Layers During Feb | Number | | | |
| All Layers | | 2,072 | 2,023 | 98 |
| Table Egg Type | | 2,138 | 2,085 | 98 |
| Hatching Egg Type | | 1,768 | 1,716 | 97 |
| Broiler-Type Hatching | | 1,744 | 1,687 | 97 |
| Egg-Type Hatching | | 2,256 | 2,224 | 99 |
| Eggs Produced During Feb ¹ | Million | | | |
| All Layers | | 7,114 | 6,893 | 97 |
| Table Egg Type | | 6,034 | 5,907 | 98 |
| Hatching Egg Type | | 1,080 | 985 | 91 |
| Broiler-Type Hatching | | 1,015 | 917 | 90 |
| Egg-Type Hatching | | 65 | 68 | 105 |
| Layers on Mar 1 ¹ | 1,000 | | | |
| All Layers | | 342,666 | 340,536 | 99 |
| Table Egg Type | | 281,673 | 283,193 | 101 |
| Hatching Egg Type | | 60,993 | 57,343 | 94 |
| Broiler-Type Hatching | | 58,110 | 54,269 | 93 |
| Egg-Type Hatching | | 2,883 | 3,074 | 107 |
| Eggs per 100 Layers on Mar 1 | Number | | | |
| All Layers | | 72.2 | 72.3 | 100 |
| Table Egg Type | | 74.6 | 74.4 | 100 |
| Hatching Egg Type | | 61.4 | 61.7 | 100 |
| Broiler-Type Hatching | | 60.7 | 60.8 | 100 |
| Egg-Type Hatching | | 76.7 | 79.1 | 103 |
| Forced Molt Layers on Mar 1 | Percent | | | |
| Percent Being Molted | | 2.4 | 3.3 | 138 |
| Percent with Molt Completed | | 22.1 | 21.7 | 98 |
| Layers Sold for Slaughter During Feb | 1,000 | 13,596 | 14,410 | 106 |
| Layers Rendered, Died, Destroyed, Composted or Disappeared For Any Reason During Feb | 1,000 | 7,364 | 7,230 | 98 |
| Pullets on Mar 1 | 1,000 | 102,370 | 99,375 | 97 |
| Pullets Added During Feb ² | 1,000 | 19,508 | 20,775 | 106 |

¹ Totals may not add due to rounding.

² Pullet chicks less than 3 days old added to pullet flocks.

**Layers and Eggs: Layers on Hand and Eggs Produced by State
and United States, During January 2008-09**

| State | Table Egg Layers in Flocks 30,000 and Above | | All Layers | | Eggs per 100 for All Layers | |
|----------------------|--|-------------------|--------------|-------------------|--------------------------------|-------------------|
| | 2008 | 2009 ¹ | 2008 | 2009 ¹ | 2008 | 2009 ¹ |
| | <i>1,000</i> | <i>1,000</i> | <i>1,000</i> | <i>1,000</i> | <i>Number</i> | <i>Number</i> |
| AL | 1,380 | 1,384 | 9,583 | 9,405 | 1,931 | 1,914 |
| AR | 3,776 | 3,575 | 13,777 | 12,923 | 1,894 | 1,989 |
| CA | 19,698 | 19,630 | 19,994 | 19,938 | 2,166 | 2,242 |
| CO | 3,385 | 3,456 | 3,927 | 3,971 | 2,368 | 2,493 |
| CT | 2,875 | 2,729 | 2,933 | 2,786 | 2,284 | 2,297 |
| FL | 10,405 | 9,829 | 10,907 | 10,173 | 2,283 | 2,261 |
| GA | 9,606 | 9,479 | 19,175 | 18,303 | 2,096 | 2,098 |
| HI | 338 | 312 | 361 | 339 | 1,801 | 1,770 |
| IL | 5,090 | 5,145 | 5,317 | 5,361 | 2,257 | 2,201 |
| IN | 23,663 | 23,521 | 24,401 | 24,219 | 2,238 | 2,279 |
| IA | 53,326 | 52,819 | 54,269 | 53,753 | 2,233 | 2,275 |
| ME | 3,994 | 3,538 | 4,066 | 3,622 | 2,115 | 2,126 |
| MD | 2,606 | 2,055 | 2,748 | 2,199 | 2,220 | 2,092 |
| MI | 8,868 | 9,437 | 9,032 | 9,601 | 2,403 | 2,458 |
| MN | 9,769 | 9,621 | 10,243 | 10,127 | 2,343 | 2,311 |
| MS | 1,614 | 1,509 | 6,435 | 5,967 | 1,974 | 2,028 |
| MO | 5,524 | 5,889 | 6,920 | 7,184 | 2,327 | 2,325 |
| NE | 10,182 | 9,623 | 10,232 | 9,673 | 2,365 | 2,409 |
| NY | 3,672 | 3,824 | 3,890 | 4,047 | 2,468 | 2,471 |
| NC | 5,059 | 5,461 | 12,802 | 12,638 | 2,062 | 2,089 |
| OH | 25,950 | 27,102 | 26,402 | 27,527 | 2,295 | 2,300 |
| OR | 2,498 | 2,341 | 2,649 | 2,479 | 2,567 | 2,622 |
| PA | 20,415 | 21,043 | 21,517 | 22,147 | 2,431 | 2,434 |
| SC | 3,370 | 3,169 | 4,606 | 4,486 | 2,106 | 2,140 |
| SD | 2,495 | 2,455 | 2,555 | 2,495 | 2,192 | 2,365 |
| TX | 14,005 | 13,896 | 18,747 | 18,270 | 2,230 | 2,239 |
| VA | 1,243 | 1,425 | 3,077 | 3,003 | 1,917 | 2,031 |
| WA | 5,450 | 5,932 | 5,516 | 6,047 | 2,212 | 2,398 |
| WI | 4,312 | 4,194 | 4,712 | 4,773 | 2,292 | 2,305 |
| Oth Sts ² | 15,141 | 15,119 | 23,944 | 23,480 | 2,172 | 2,176 |
| US | 279,709 | 279,512 | 344,737 | 340,936 | 2,218 | 2,249 |

¹ Revised.

² Not published separately to avoid disclosing data for individual operations.

**Layers and Eggs: Layers on Hand and Eggs Produced by State
and United States, During February 2008-09**

| State | Table Egg Layers in Flocks 30,000 and Above | | All Layers | | Eggs per 100 for All Layers | |
|----------------------|--|--------------|--------------|--------------|--------------------------------|---------------|
| | 2008 | 2009 | 2008 | 2009 | 2008 | 2009 |
| | <i>1,000</i> | <i>1,000</i> | <i>1,000</i> | <i>1,000</i> | <i>Number</i> | <i>Number</i> |
| AL | 1,332 | 1,415 | 9,537 | 9,332 | 1,804 | 1,725 |
| AR | 3,796 | 3,495 | 14,000 | 12,863 | 1,779 | 1,765 |
| CA | 19,281 | 19,465 | 19,578 | 19,770 | 2,002 | 2,023 |
| CO | 3,362 | 3,409 | 3,905 | 3,890 | 2,254 | 2,288 |
| CT | 2,756 | 2,678 | 2,819 | 2,741 | 2,128 | 2,080 |
| FL | 10,402 | 9,627 | 10,876 | 9,948 | 2,161 | 1,960 |
| GA | 9,513 | 9,360 | 19,163 | 18,214 | 1,946 | 1,905 |
| HI | 330 | 307 | 353 | 334 | 1,728 | 1,557 |
| IL | 5,193 | 5,021 | 5,420 | 5,235 | 2,122 | 2,006 |
| IN | 23,751 | 23,655 | 24,474 | 24,399 | 2,112 | 2,029 |
| IA | 52,651 | 52,898 | 53,624 | 53,839 | 2,068 | 2,051 |
| ME | 4,172 | 3,584 | 4,240 | 3,667 | 2,123 | 1,909 |
| MD | 2,511 | 2,064 | 2,624 | 2,188 | 2,058 | 1,920 |
| MI | 8,970 | 9,446 | 9,134 | 9,610 | 2,233 | 2,216 |
| MN | 9,726 | 9,677 | 10,199 | 10,176 | 2,167 | 2,113 |
| MS | 1,634 | 1,450 | 6,376 | 5,967 | 1,882 | 1,877 |
| MO | 5,592 | 5,875 | 6,930 | 7,176 | 2,208 | 2,132 |
| NE | 9,904 | 9,623 | 9,954 | 9,673 | 2,230 | 2,161 |
| NY | 3,808 | 3,885 | 4,031 | 4,103 | 2,282 | 2,218 |
| NC | 4,830 | 5,279 | 12,717 | 12,454 | 1,942 | 1,951 |
| OH | 25,587 | 26,856 | 26,040 | 27,300 | 2,093 | 2,018 |
| OR | 2,431 | 2,339 | 2,570 | 2,486 | 2,451 | 2,333 |
| PA | 20,461 | 21,500 | 21,535 | 22,648 | 2,275 | 2,181 |
| SC | 3,443 | 3,098 | 4,696 | 4,389 | 1,895 | 1,982 |
| SD | 2,543 | 2,447 | 2,603 | 2,487 | 2,036 | 2,211 |
| TX | 14,092 | 13,908 | 18,834 | 18,520 | 2,103 | 2,009 |
| VA | 1,240 | 1,342 | 3,070 | 2,942 | 1,759 | 1,801 |
| WA | 5,355 | 6,014 | 5,424 | 6,129 | 2,212 | 2,105 |
| WI | 4,313 | 4,256 | 4,726 | 4,836 | 2,074 | 2,068 |
| Oth Sts ¹ | 15,042 | 14,903 | 23,847 | 23,436 | 2,042 | 1,967 |
| US | 278,021 | 278,876 | 343,299 | 340,752 | 2,072 | 2,023 |

¹ Not published separately to avoid disclosing data for individual operations.

**Egg Production: By Type, State, and United States,
January 2008-09**

| State | Total Production ¹ | | Table Eggs ² | | Hatching Eggs ² | |
|----------------------|-------------------------------|---------------------|-------------------------|---------------------|----------------------------|---------------------|
| | 2008 | 2009 ³ | 2008 | 2009 ³ | 2008 | 2009 ³ |
| | <i>Million Eggs</i> | <i>Million Eggs</i> | <i>Million Eggs</i> | <i>Million Eggs</i> | <i>Million Eggs</i> | <i>Million Eggs</i> |
| AL | 185 | 180 | 32 | 32 | 153 | 148 |
| AR | 261 | 257 | 81 | 87 | 180 | 170 |
| CA | 433 | 447 | | | | |
| CO | 93 | 99 | | | | |
| CT | 67 | 64 | | | | |
| FL | 249 | 230 | 239 | 225 | 10 | 5 |
| GA | 402 | 384 | 217 | 215 | 185 | 169 |
| HI | 6.5 | 6.0 | 6.5 | 6.0 | 0 | 0 |
| IL | 120 | 118 | 116 | 115 | 4 | 3 |
| IN | 546 | 552 | 533 | 539 | 13 | 13 |
| IA | 1,212 | 1,223 | 1,197 | 1,208 | 15 | 15 |
| ME | 86 | 77 | | | | |
| MD | 61 | 46 | 59 | 44 | 2 | 2 |
| MI | 217 | 236 | | | | |
| MN | 240 | 234 | 232 | 225 | 8 | 9 |
| MS | 127 | 121 | 37 | 37 | 90 | 84 |
| MO | 161 | 167 | | | | |
| NE | 242 | 233 | 242 | 233 | 0 | 0 |
| NY | 96 | 100 | | | | |
| NC | 264 | 264 | 123 | 134 | 141 | 130 |
| OH | 606 | 633 | | | | |
| OR | 68 | 65 | 66 | 63 | 2 | 2 |
| PA | 523 | 539 | 503 | 519 | 20 | 20 |
| SC | 97 | 96 | 75 | 72 | 22 | 24 |
| SD | 56 | 59 | 56 | 59 | 0 | 0 |
| TX | 418 | 409 | | | | |
| VA | 59 | 61 | 27 | 32 | 32 | 29 |
| WA | 122 | 145 | | | | |
| WI | 108 | 110 | | | | |
| Oth Sts ⁴ | 520 | 511 | 377 | 377 | 144 | 134 |
| US ¹ | 7,646 | 7,666 | 6,498 | 6,591 | 1,149 | 1,075 |

¹ Totals may not add due to rounding.

² Data by type of flock not shown for some States to avoid disclosing individual operations, data included in US totals.

³ Revised.

⁴ Not published separately to avoid disclosing data for individual operations.

**Egg Production: By Type, State, and United States,
February 2008-09**

| State | Total Production ¹ | | Table Eggs ² | | Hatching Eggs ² | |
|----------------------|-------------------------------|---------------------|-------------------------|---------------------|----------------------------|---------------------|
| | 2008 | 2009 | 2008 | 2009 | 2008 | 2009 |
| | <i>Million Eggs</i> | <i>Million Eggs</i> | <i>Million Eggs</i> | <i>Million Eggs</i> | <i>Million Eggs</i> | <i>Million Eggs</i> |
| AL | 172 | 161 | 29 | 28 | 143 | 133 |
| AR | 249 | 227 | 76 | 73 | 173 | 154 |
| CA | 392 | 400 | | | | |
| CO | 88 | 89 | | | | |
| CT | 60 | 57 | | | | |
| FL | 235 | 195 | 226 | 190 | 9 | 5 |
| GA | 373 | 347 | 199 | 194 | 174 | 153 |
| HI | 6.1 | 5.2 | 6.1 | 5.2 | 0 | 0 |
| IL | 115 | 105 | 112 | 102 | 3 | 3 |
| IN | 517 | 495 | 505 | 483 | 12 | 12 |
| IA | 1,109 | 1,104 | 1,094 | 1,090 | 15 | 14 |
| ME | 90 | 70 | | | | |
| MD | 54 | 42 | 53 | 41 | 1 | 1 |
| MI | 204 | 213 | | | | |
| MN | 221 | 215 | 213 | 207 | 8 | 8 |
| MS | 120 | 112 | 36 | 33 | 84 | 79 |
| MO | 153 | 153 | | | | |
| NE | 222 | 209 | 222 | 209 | 0 | 0 |
| NY | 92 | 91 | | | | |
| NC | 247 | 243 | 113 | 123 | 134 | 120 |
| OH | 545 | 551 | | | | |
| OR | 63 | 58 | 61 | 56 | 2 | 2 |
| PA | 490 | 494 | 472 | 475 | 18 | 19 |
| SC | 89 | 87 | 69 | 66 | 20 | 21 |
| SD | 53 | 55 | 53 | 55 | 0 | 0 |
| TX | 396 | 372 | | | | |
| VA | 54 | 53 | 24 | 27 | 30 | 26 |
| WA | 120 | 129 | | | | |
| WI | 98 | 100 | | | | |
| Oth Sts ³ | 487 | 461 | 352 | 337 | 135 | 124 |
| US ¹ | 7,114 | 6,893 | 6,034 | 5,907 | 1,080 | 985 |

¹ Totals may not add due to rounding.

² Data by type of flock not shown for some States to avoid disclosing individual operations, data included in US totals.

³ Not published separately to avoid disclosing data for individual operations.

**Forced Molt: Percent of All Layers by Month,
United States, 2008-09**

| Month | Percent Being Molted ¹ | | Percent with Molt Completed ¹ | |
|------------------|-----------------------------------|----------------|--|----------------|
| | 2008 | 2009 | 2008 | 2009 |
| | <i>Percent</i> | <i>Percent</i> | <i>Percent</i> | <i>Percent</i> |
| Jan | 3.0 | 3.2 | 22.7 | 21.2 |
| Feb ² | 3.9 | 3.4 | 21.7 | 21.4 |
| Mar | 2.4 | 3.3 | 22.1 | 21.7 |
| Apr | 2.8 | | 21.3 | |
| May | 4.1 | | 20.8 | |
| Jun | 3.7 | | 20.9 | |
| Jul | 3.4 | | 20.8 | |
| Aug | 3.9 | | 21.2 | |
| Sep | 3.9 | | 20.8 | |
| Oct | 3.7 | | 21.9 | |
| Nov | 2.1 | | 22.7 | |
| Dec | 1.9 | | 22.1 | |

¹ As of first of month.

² Revised 2009 only.

**Forced Molt: Percent of All Layers by State
and United States, March 1, 2008-09**

| State | Percent Being Molted ¹ | | Percent with Molt Completed ¹ | |
|----------------------|-----------------------------------|----------------|--|----------------|
| | 2008 | 2009 | 2008 | 2009 |
| | <i>Percent</i> | <i>Percent</i> | <i>Percent</i> | <i>Percent</i> |
| AL | 0.5 | 0.0 | 6.0 | 7.0 |
| AR | 0.0 | 1.0 | 9.0 | 9.0 |
| CA | 3.0 | 5.5 | 35.0 | 29.5 |
| CO | 0.0 | 2.0 | 19.0 | 17.5 |
| CT | 0.0 | 8.0 | 14.5 | 12.0 |
| FL | 3.0 | 9.5 | 34.5 | 30.0 |
| GA | 1.0 | 2.5 | 13.5 | 12.0 |
| HI | 10.0 | 9.5 | 60.5 | 54.0 |
| IL | 2.0 | 9.5 | 31.0 | 29.5 |
| IN | 2.0 | 5.0 | 33.5 | 35.5 |
| IA | 5.0 | 5.0 | 34.0 | 34.5 |
| ME | 0.0 | 0.0 | 0.0 | 0.0 |
| MD | 8.0 | 4.0 | 10.5 | 17.0 |
| MI | 3.5 | 1.0 | 16.5 | 20.5 |
| MN | 2.5 | 2.0 | 29.0 | 26.0 |
| MS | 0.0 | 2.0 | 12.0 | 9.0 |
| MO | 1.5 | 3.0 | 18.0 | 8.0 |
| NE | 0.0 | 0.0 | 9.0 | 1.5 |
| NY | 0.0 | 1.0 | 8.0 | 6.5 |
| NC | 1.0 | 0.0 | 7.5 | 12.0 |
| OH | 0.5 | 1.0 | 15.0 | 21.0 |
| OR | 2.5 | 5.5 | 29.0 | 29.0 |
| PA | 2.0 | 2.0 | 11.5 | 12.5 |
| SC | 6.5 | 0.0 | 23.5 | 17.5 |
| SD | 5.0 | 2.5 | 18.0 | 38.0 |
| TX | 1.0 | 4.0 | 26.0 | 19.0 |
| VA | 3.0 | 0.0 | 19.0 | 11.5 |
| WA | 6.5 | 11.5 | 31.0 | 26.5 |
| WI | 6.5 | 0.0 | 35.5 | 26.5 |
| Oth Sts ² | 3.2 | 2.8 | 20.6 | 22.1 |
| US | 2.4 | 3.3 | 22.1 | 21.7 |

¹ As of first of month.

² Not published separately to avoid disclosing data for individual operations.

**Hatchery Production: Eggs in Incubators, Chicks Hatched,
and Placements by Type, United States, February-March 2008-09**

| Item | 2008 | 2009 | 2009 as % of 2008 |
|---|--------------|--------------|-------------------------|
| | <i>1,000</i> | <i>1,000</i> | <i>Percent</i> |
| Egg-Type | | | |
| Eggs in Incubators on Mar 1 | 36,531 | 37,166 | 102 |
| Chicks Hatched During Feb | 37,549 | 36,861 | 98 |
| Chicks Hatched Jan thru Feb | 77,716 | 74,944 | 96 |
| Pullets Hatched During Feb for Intended Placements in Hatchery Supply Flocks | 280 | 256 | 91 |
| 7-18 Months Earlier ¹ | 2,871 | 2,989 | 104 |
| Broiler-Type | | | |
| Eggs in Incubators on Mar 1 | 679,081 | 634,244 | 93 |
| Chicks Hatched During Feb | 771,197 | 700,913 | 91 |
| Chicks Hatched Jan thru Feb | 1,593,063 | 1,479,314 | 93 |
| Pullets Hatched During Feb for Intended Placements in Hatchery Supply Flocks | 7,536 | 7,215 | 96 |
| 7-15 Months Earlier ² | 65,223 | 65,867 | 101 |

¹ 2009 includes pullet chicks hatched Aug 2007 through Jul 2008.

² 2009 includes pullet chicks hatched Nov 2007 through Jul 2008.

**Egg-Type Eggs in Incubators: By Region and United States,
March 1, 2008-09**

| Region | 2008 | 2009 | 2009 as % of 2008 |
|-----------------|--------------|--------------|-------------------------|
| | <i>1,000</i> | <i>1,000</i> | <i>Percent</i> |
| North Atlantic | 5,094 | 5,705 | 112 |
| E North Central | 7,116 | 7,660 | 108 |
| W North Central | 8,575 | 8,701 | 101 |
| South Atlantic | 4,624 | 3,572 | 77 |
| South Central | 5,997 | 6,067 | 101 |
| West | 5,125 | 5,461 | 107 |
| US | 36,531 | 37,166 | 102 |

**Egg-Type Chicks Hatched: By State and United States,
February 2008-09**

| State | During February | | | Jan-Feb | | |
|----------------------|-----------------|--------------|-------------------------|--------------|--------------|-------------------------|
| | 2008 | 2009 | 2009 as % of 2008 | 2008 | 2009 | 2009 as % of 2008 |
| | <i>1,000</i> | <i>1,000</i> | <i>Percent</i> | <i>1,000</i> | <i>1,000</i> | <i>Percent</i> |
| GA | 2,175 | 2,087 | 96 | 4,532 | 4,281 | 94 |
| IN | 5,051 | 4,815 | 95 | 11,015 | 10,594 | 96 |
| IA | 7,110 | 7,089 | 100 | 14,485 | 14,014 | 97 |
| MN | 620 | 1,038 | 167 | 1,469 | 2,269 | 154 |
| PA | 5,596 | 4,626 | 83 | 10,321 | 9,713 | 94 |
| Oth Sts ¹ | 16,997 | 17,206 | 101 | 35,894 | 34,073 | 95 |
| US | 37,549 | 36,861 | 98 | 77,716 | 74,944 | 96 |

¹ Not published separately to avoid disclosing data for individual operations.

Egg-Type Chicks Hatched: By Month, United States, 2008-09

| Month | By Months | | | Cumulative | | |
|-------|--------------|--------------|-------------------------|--------------|--------------|-------------------------|
| | 2008 | 2009 | 2009 as % of 2008 | 2008 | 2009 | 2009 as % of 2008 |
| | <i>1,000</i> | <i>1,000</i> | <i>Percent</i> | <i>1,000</i> | <i>1,000</i> | <i>Percent</i> |
| Jan | 40,167 | 38,083 | 95 | 40,167 | 38,083 | 95 |
| Feb | 37,549 | 36,861 | 98 | 77,716 | 74,944 | 96 |
| Mar | 39,547 | | | 117,263 | | |
| Apr | 41,051 | | | 158,314 | | |
| May | 42,724 | | | 201,038 | | |
| Jun | 42,538 | | | 243,576 | | |
| Jul | 37,929 | | | 281,505 | | |
| Aug | 36,301 | | | 317,806 | | |
| Sep | 36,428 | | | 354,234 | | |
| Oct | 39,998 | | | 394,232 | | |
| Nov | 36,607 | | | 430,839 | | |
| Dec | 36,393 | | | 467,232 | | |

**Intended Placements: Egg-Type Pullet Chicks for Hatchery Supply
Flocks by Month and Total, United States, 2008-09**

| Month | Pullet Chicks Hatched | | 2009 as % of 2008 | Cumulative Potential Plcmts Relative to Current Supply Flocks 7-18 Months Earlier ¹ | |
|-------|-----------------------|--------------|-------------------------|--|--------------|
| | 2008 | 2009 | | 2008 | 2009 |
| | <i>1,000</i> | <i>1,000</i> | <i>Percent</i> | <i>1,000</i> | <i>1,000</i> |
| Jan | 210 | 240 | 114 | 3,007 | 2,928 |
| Feb | 280 | 256 | 91 | 2,871 | 2,989 |
| Mar | 245 | | | 2,865 | 2,990 |
| Apr | 264 | | | 2,905 | 2,900 |
| May | 227 | | | 2,867 | 2,989 |
| Jun | 231 | | | 2,942 | 3,025 |
| Jul | 244 | | | 2,982 | 2,979 |
| Aug | 279 | | | 2,927 | 3,009 |
| Sep | 210 | | | 3,042 | 2,985 |
| Oct | 273 | | | 2,971 | |
| Nov | 317 | | | 2,961 | |
| Dec | 199 | | | 2,997 | |
| Total | 2,979 | | | | |

¹ For February 2009, includes breeder pullet chicks hatched Aug 2007 through Jul 2008. The 7-18 months represent the first laying cycle. Molting and additional laying cycles will increase the cumulative potential placements.

**Broiler-Type Eggs in Incubators: By Region
and United States, March 1, 2008-09**

| Region | 2008 | 2009 | 2009 as % of 2008 |
|-----------------|--------------|--------------|-------------------------|
| | <i>1,000</i> | <i>1,000</i> | <i>Percent</i> |
| North Atlantic | 12,614 | 11,992 | 95 |
| E North Central | 11,448 | 11,727 | 102 |
| W North Central | 30,429 | 28,115 | 92 |
| South Atlantic | 251,372 | 234,642 | 93 |
| South Central | 347,643 | 324,297 | 93 |
| West | 25,575 | 23,471 | 92 |
| US | 679,081 | 634,244 | 93 |

**Broiler-Type Chicks Hatched: By State
and United States, February 2008-09**

| State | During February | | | Jan-Feb | | |
|----------------------|-----------------|--------------|-------------------------|--------------|--------------|-------------------------|
| | 2008 | 2009 | 2009 as % of 2008 | 2008 | 2009 | 2009 as % of 2008 |
| | <i>1,000</i> | <i>1,000</i> | <i>Percent</i> | <i>1,000</i> | <i>1,000</i> | <i>Percent</i> |
| AL | 109,490 | 98,410 | 90 | 227,613 | 206,680 | 91 |
| AR | 95,937 | 82,637 | 86 | 200,315 | 173,309 | 87 |
| DE | 13,858 | 11,367 | 82 | 28,728 | 23,727 | 83 |
| FL | 4,774 | 3,398 | 71 | 9,787 | 7,269 | 74 |
| GA | 118,523 | 108,645 | 92 | 246,284 | 229,719 | 93 |
| KY | 26,036 | 24,556 | 94 | 54,002 | 52,493 | 97 |
| LA | 13,626 | 11,807 | 87 | 27,522 | 24,799 | 90 |
| MD | 31,254 | 28,190 | 90 | 64,237 | 60,743 | 95 |
| MS | 65,686 | 58,470 | 89 | 135,467 | 123,739 | 91 |
| NC | 67,619 | 62,893 | 93 | 140,427 | 132,642 | 94 |
| OK | 22,057 | 22,093 | 100 | 45,946 | 46,400 | 101 |
| PA | 14,544 | 12,915 | 89 | 29,761 | 27,166 | 91 |
| SC | 18,376 | 18,261 | 99 | 38,567 | 38,372 | 99 |
| TX | 53,939 | 51,287 | 95 | 110,343 | 108,544 | 98 |
| VA | 21,652 | 18,784 | 87 | 44,202 | 40,905 | 93 |
| CA, MO, TN, & WV | 67,315 | 63,121 | 94 | 139,598 | 135,292 | 97 |
| 19 Sts ¹ | 744,686 | 676,834 | 91 | 1,542,799 | 1,431,799 | 93 |
| Oth Sts ² | 26,511 | 24,079 | 91 | 50,264 | 47,515 | 95 |
| US | 771,197 | 700,913 | 91 | 1,593,063 | 1,479,314 | 93 |

¹ States in the weekly hatchery production estimating program.

² Not published separately to avoid disclosing data for individual operations.

Broiler-Type Chicks Hatched: By Month, United States, 2008-09

| Month | By Months | | | Cumulative | | |
|-------|--------------|--------------|-------------------------|--------------|--------------|-------------------------|
| | 2008 | 2009 | 2009 as % of 2008 | 2008 | 2009 | 2009 as % of 2008 |
| | <i>1,000</i> | <i>1,000</i> | <i>Percent</i> | <i>1,000</i> | <i>1,000</i> | <i>Percent</i> |
| Jan | 821,866 | 778,401 | 95 | 821,866 | 778,401 | 95 |
| Feb | 771,197 | 700,913 | 91 | 1,593,063 | 1,479,314 | 93 |
| Mar | 832,899 | | | 2,425,962 | | |
| Apr | 797,481 | | | 3,223,443 | | |
| May | 823,718 | | | 4,047,161 | | |
| Jun | 806,202 | | | 4,853,363 | | |
| Jul | 806,555 | | | 5,659,918 | | |
| Aug | 799,625 | | | 6,459,543 | | |
| Sep | 756,565 | | | 7,216,108 | | |
| Oct | 742,121 | | | 7,958,229 | | |
| Nov | 705,587 | | | 8,663,816 | | |
| Dec | 779,160 | | | 9,442,976 | | |

**Intended Placements: Broiler-Type Pullet Chicks for Hatchery
Supply Flocks by Month and Total, 2008-09**

| Month | Pullet Chicks Hatched | | 2009 as % of 2008 | Cumulative Potential Plcmts Relative to Current Supply Flocks 7-15 Months Earlier ¹ | |
|---------------------------------------|-----------------------|--------------|-------------------------|--|--------------|
| | 2008 | 2009 | | 2008 | 2009 |
| | <i>1,000</i> | <i>1,000</i> | <i>Percent</i> | <i>1,000</i> | <i>1,000</i> |
| US Place- ments | | | | | |
| Jan ² | 7,012 | 7,142 | 102 | 65,333 | 66,073 |
| Feb | 7,536 | 7,215 | 96 | 65,223 | 65,867 |
| Mar | 7,090 | | | 65,397 | 65,958 |
| Apr | 6,867 | | | 65,567 | 65,596 |
| May | 8,217 | | | 65,522 | 65,423 |
| Jun | 7,527 | | | 66,057 | 64,913 |
| Jul | 6,764 | | | 66,170 | 64,403 |
| Aug | 7,697 | | | 66,490 | 64,678 |
| Sep | 6,886 | | | 65,943 | 63,676 |
| Oct | 6,839 | | | 65,234 | |
| Nov | 7,026 | | | 65,467 | |
| Dec | 6,580 | | | 65,892 | |
| Annual Total | 86,041 | | | | |
| Total Place- ments ³ | | | | | |
| Jan ⁴ | 8,706 | 8,410 | 97 | | |
| Feb | 9,498 | 8,524 | 90 | | |
| Mar | 9,245 | | | | |
| Apr | 8,676 | | | | |
| May | 10,089 | | | | |
| Jun | 9,339 | | | | |
| Jul | 8,319 | | | | |
| Aug | 9,603 | | | | |
| Sep | 8,651 | | | | |
| Oct | 8,350 | | | | |
| Nov | 8,704 | | | | |
| Dec | 8,197 | | | | |
| Annual Total | 107,377 | | | | |

¹ For Feb 2009, includes breeder pullet chicks hatched Nov 2007 through Jul 2008.

² Revised 2009 pullet chicks hatched and cumulative placements for August 2009.

³ U.S. production of intended placements worldwide.

⁴ Revised 2009 only.

Reliability of Chickens and Eggs Estimates

Survey Procedures: Primary data for the "**Chickens and Eggs**" report are from weekly and/or monthly questionnaires sent to producers. An attempt is made to collect information for layer and egg estimates from each known contractor and independent producer who has at least 30,000 table egg layers, flocks of hatchery supply layers, or pullet only operations with at least 500 pullets. Coverage for operations with less than 30,000 table egg layers are estimated each month based on data reported in December. Approximately 650 contractors, independent egg producers, and pullet only operations are contacted each month. All known hatcheries, approximately 300, are contacted for information on a weekly and/or monthly basis.

Estimating Procedures: Sound statistical methodology is employed to derive estimates from the reported data. All data are analyzed for unusual values. Data from each operation are compared to their own past operating profile and to trends from similar operations. Data for missing operations are estimated based on similar operations or historical data. NASS field offices prepare these estimates by using a combination of survey indications and historic trends. Individual State estimates are reviewed by the Agricultural Statistics Board for reasonableness. Individual hatchery data are summed to State, regional, and U.S. totals.

For chicken hatcheries, chicks hatched consist of all chicks of domesticated breeds including males and chicks destined for hatchery supply flocks and research purposes. Eggs set are eggs in incubators for the purpose of hatching. The relationship of egg-type chicks hatched to chicken inventory and poultry marketings are carefully monitored. The disposition of egg-type chicks hatched prior to placement into the laying flock can vary significantly, which can make comparisons to changes in layer inventory inconsistent over time. Broiler chicks placed are specifically placed on feed for meat production. Intended placement data reported by leading breeders include pullet chicks expected from eggs sold the preceding month. The breeders in this report account for a large percentage of replacement pullets for hatchery supply flocks. Production of replacement pullets by these breeders indicates the number of pullets available to hatchery supply layer flocks several months before the pullets will actually move into the laying flocks. "Hatchery Supply Flocks" include all generations of layers which could lay eggs to supply a hatchery. This includes the generations of parents, grandparents, great-grandparents, pedigree, etc. Also included are research flocks, vaccine flocks, and specific pathogen-free flocks. The broiler cumulative potential placements are a moving total of the intended placements 7-15 months earlier. The egg-type cumulative potential placements of 7-18 months earlier represent the first laying cycle. Molting and additional laying cycles will increase the cumulative potential placements of egg-type hatching flocks.

Revision Policy: The previous month's estimates are subject to revision if late reports or corrected data indicates a different level. Additionally, revisions after the monthly report will be made at the end of the marketing year and published in the annual reports of "**Chickens and Eggs Summary**" and "**Hatchery Production**".

Reliability: Estimates are based on a census of all known contractors and independent producers who have at least 30,000 table egg layers, flocks of hatchery supply layers, pullet only operations with at least 500 pullets, or operating hatcheries and therefore, have no sampling error. However, estimates are subject to errors such as omission, duplication, and mistakes in reporting, recording, and processing the data. While these errors cannot be measured directly, they are minimized through strict quality controls in the data collection process and a careful review of all reported data for consistency and reasonableness.

To assist in evaluating the reliability of the estimates in this report, the "Root Mean Square Error" is shown for selected items in the following table. The "Root Mean Square Error" is a statistical measure based on past performance and is computed using the differences between first and final estimates. The "Root Mean Square Error" for all layers over the past 24 months is 1.0 percent. This means that chances are 2 out of 3 that the final estimate will not be above or below the current estimate of 341 million layers by more than 1.0 percent. Chances are 9 out of 10 that the difference will not exceed 1.9 percent.

Reliability of Layer and Egg Estimates

| Item | Root Mean Square Error | 90 Percent Confidence Level | | Difference Between First and Latest Estimates | | | Number of Years | |
|------------|------------------------|-----------------------------|--------------------------|---|--------------------------|---------------------------|--------------------|---------------------|
| | | | | Average | Smallest | Largest | First Above Latest | First Below Latest |
| | | | | | | | | |
| All Layers | <i>Percent</i> 1.0 | <i>Percent</i> 1.9 | <i>1,000</i> 65 | <i>1,000</i> 1,703 | <i>1,000</i> 10 | <i>1,000</i> 4,033 | <i>Number</i> 8 | <i>Number</i> 16 |
| Eggs | 0.7 | 1.2 | <i>Million Eggs</i> 1 | <i>Million Eggs</i> 37 | <i>Million Eggs</i> 0 | <i>Million Eggs</i> 86 | 8 | 15 |

Regional Listing

North Atlantic: CT, ME, MA, NH, NJ, NY, PA, RI, VT.

East North Central: IL, IN, MI, OH, WI.

West North Central: IA, KS, MN, MO, NE, ND, SD.

South Atlantic: DE, FL, GA, MD, NC, SC, VA, WV.

South Central: AL, AR, KY, LA, MS, OK, TN, TX.

West: AK, AZ, CA, CO, HI, ID, MT, NM, NV, OR, UT, WA, WY.

Terms and Definitions of Chickens and Eggs Estimates

All Layers includes both table egg and hatching egg flocks regardless of size.

Intended Placements are reported by leading breeders. Coverage may not be 100 percent. Includes expected pullet chicks from eggs sold during the preceding month at the rate of 125 pullet chicks per case of 30 dozen eggs.

Information Contacts

Listed below are the commodity specialists in the Livestock Branch of the National Agricultural Statistics Service to contact for additional information.

- Dan Kerestes, Chief, Livestock Branch(202) 720-3570
- Bruce Boess, Head, Poultry and Specialty Commodities Section.....(202) 720-4447
- David Colwell - Cold Storage(202) 720-8784
- Fleming Gibson - Poultry Slaughter, Turkey Hatchery, Turkeys Raised.....(202) 690-3237
- Sharyn Lavender - Broiler Hatchery, Chicken Hatchery, Honey(202) 720-3244
- Kim Linonis - Layers, Eggs(202) 690-8632
- Bruce Boess - Catfish Processing, Catfish Production, Trout Production,
Census of Aquaculture, Egg Products, Mink(202) 720-4447

ACCESS TO REPORTS!!

For your convenience, there are several ways to obtain NASS reports, data products, and services:

INTERNET ACCESS

All NASS reports are available free of charge on the worldwide Internet. For access, connect to the Internet and go to the NASS Home Page at: www.nass.usda.gov.

E-MAIL SUBSCRIPTION

All NASS reports are available by subscription free of charge direct to your e-mail address. Starting with the NASS Home Page at www.nass.usda.gov, under the right navigation, *Receive reports by Email*, click on **National** or **State**. Follow the instructions on the screen.

PRINTED REPORTS OR DATA PRODUCTS

CALL OUR TOLL-FREE ORDER DESK: 800-999-6779 (U.S. and Canada)
Other areas, please call 703-605-6220 FAX: 703-605-6900
(Visa, MasterCard, check, or money order acceptable for payment.)

ASSISTANCE

For **assistance** with general agricultural statistics or further information about NASS or its products or services, contact the **Agricultural Statistics Hotline** at **800-727-9540**, 7:30 a.m. to 4:00 p.m. ET, or e-mail: nass@nass.usda.gov.

The U.S. Department of Agriculture (USDA) prohibits discrimination in all its programs and activities on the basis of race, color, national origin, age, disability, and where applicable, sex, marital status, familial status, parental status, religion, sexual orientation, genetic information, political beliefs, reprisal, or because all or a part of an individual's income is derived from any public assistance program. (Not all prohibited bases apply to all programs.) Persons with disabilities who require alternative means for communication of program information (Braille, large print, audiotape, etc.) should contact USDA's TARGET Center at (202) 720-2600 (voice and TDD).

To file a complaint of discrimination, write to USDA, Director, Office of Civil Rights, 1400 Independence Avenue, S.W., Washington, D.C. 20250-9410, or call (800) 795-3272 (voice) or (202) 720-6382 (TDD). USDA is an equal opportunity provider and employer.