

Chickens and Eggs

Released April 21, 2009, by the National Agricultural Statistics Service (NASS), Agricultural Statistics Board, U.S. Department of Agriculture. For information on "Layers and Eggs" call Kim Linonis at (202) 690-8632, for "Chicks Hatched" call Sharyn Lavender at (202) 720-3244, office hours 7:30 a.m. to 4:00 p.m. ET.

March Egg Production Up 1 Percent

U.S. egg production totaled 7.72 billion during March 2009, up 1 percent from last year. Production included 6.63 billion table eggs, and 1.09 billion hatching eggs, of which 1.02 billion were broiler-type and 75 million were egg-type. The total number of layers during March 2009 averaged 340 million, down slightly from last year. March egg production per 100 layers was 2,269 eggs, up 1 percent from March 2008.

All layers in the U.S. on April 1, 2009 totaled 341 million, down slightly from last year. The 341 million layers consisted of 283 million layers producing table or market type eggs, 54.3 million layers producing broiler-type hatching eggs, and 3.07 million layers producing egg-type hatching eggs. Rate of lay per day on April 1, 2009, averaged 73.9 eggs per 100 layers, up 2 percent from April 1, 2008.

Egg-Type Chicks Hatched Up 1 Percent

Egg-type chicks hatched during March 2009 totaled 40.1 million, up 1 percent from March 2008. Eggs in incubators totaled 37.6 million on April 1, 2009, up slightly from a year ago.

Domestic placements of egg-type pullet chicks for future hatchery supply flocks by leading breeders totaled 277 thousand during March 2009, up 13 percent from March 2008.

Broiler-Type Chicks Hatched Down 6 Percent

Broiler-type chicks hatched during March 2009 totaled 783 million, down 6 percent from March 2008. Eggs in incubators totaled 625 million on April 1, 2009, down 7 percent from a year earlier.

Leading breeders placed 6.68 million broiler-type pullet chicks for future domestic hatchery supply flocks during March 2009, down 6 percent from March 2008.

Contents

	Page
U.S. Average Number of Layers on Hand and Egg Production.....	1
U.S. Layers on Hand and Eggs Produced by Type, Forced Molt, and Pullets.....	3
Layers on Hand and Eggs Produced by State.....	5
Egg Production by Type and State	7
Forced Molt	9
U.S. Hatchery Production Summary	10
Egg-Type Hatchery	11
Egg-Type Intended Placements	12
Broiler-Type Hatchery	12
Broiler-Type Intended Placements.....	14
Reliability of Chickens and Eggs Estimates.....	15
Regional Listing.....	16
Terms and Definitions of Chickens and Eggs Estimates.....	16
Information Contacts.....	16

**All Layers: Average Number on Hand During the Month,
United States, 2008-09**

Month	2008	2009
	<i>1,000 Layers</i>	<i>1,000 Layers</i>
Dec ¹	346,225	340,302
Jan	344,737	340,936
Feb ²	343,299	340,614
Mar	342,017	340,451
Apr	340,838	
May	340,116	
Jun	338,664	
Jul	336,276	
Aug	335,265	
Sep	334,489	
Oct	334,937	
Nov	337,995	

¹ December preceding year.

² Revised 2009 only.

**Eggs: Production During the Month by Type,
United States, 2008-09**

Month	Total Eggs ¹		Table Eggs		Hatching Eggs	
	2008	2009	2008	2009	2008	2009
	<i>Million Eggs</i>	<i>Million Eggs</i>	<i>Million Eggs</i>	<i>Million Eggs</i>	<i>Million Eggs</i>	<i>Million Eggs</i>
Dec ²	7,808	7,768	6,666	6,701	1,143	1,068
Jan	7,646	7,666	6,498	6,591	1,149	1,075
Feb ³	7,114	6,892	6,034	5,906	1,080	985
Mar	7,675	7,724	6,517	6,632	1,159	1,093
Apr	7,373		6,256		1,117	
May	7,564		6,409		1,155	
Jun	7,367		6,262		1,104	
Jul	7,599		6,474		1,125	
Aug	7,551		6,436		1,115	
Sep	7,339		6,272		1,067	
Oct	7,625		6,538		1,088	
Nov	7,490		6,446		1,044	
During Year ¹	90,151		76,811		13,346	

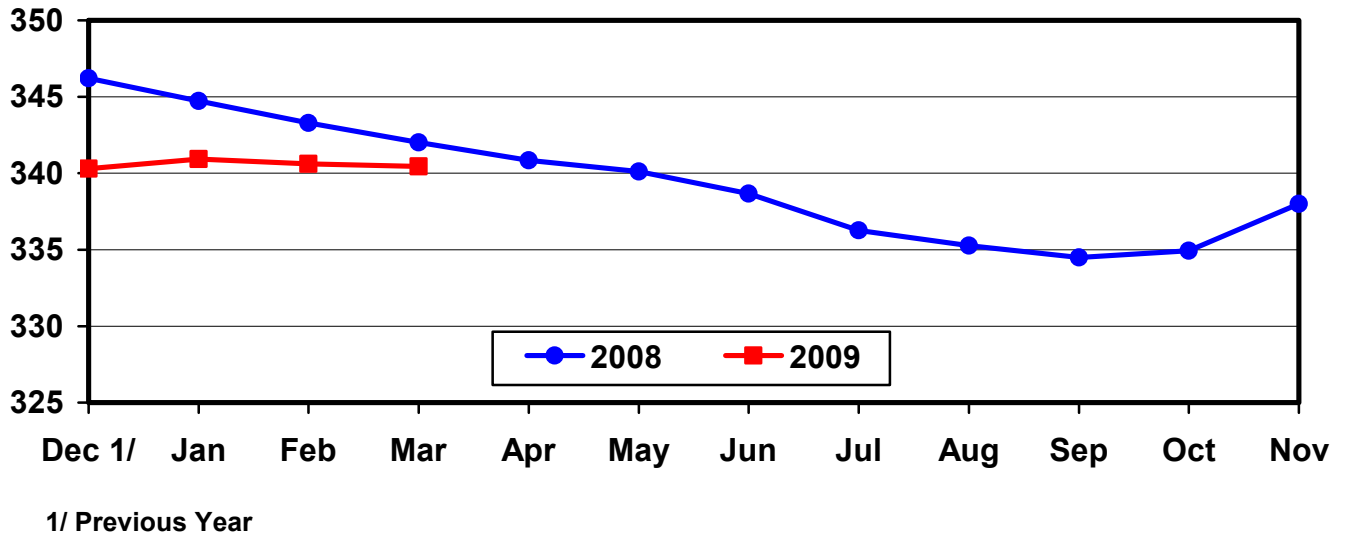
¹ Totals may not add due to rounding.

² December preceding year.

³ Revised 2009 only.

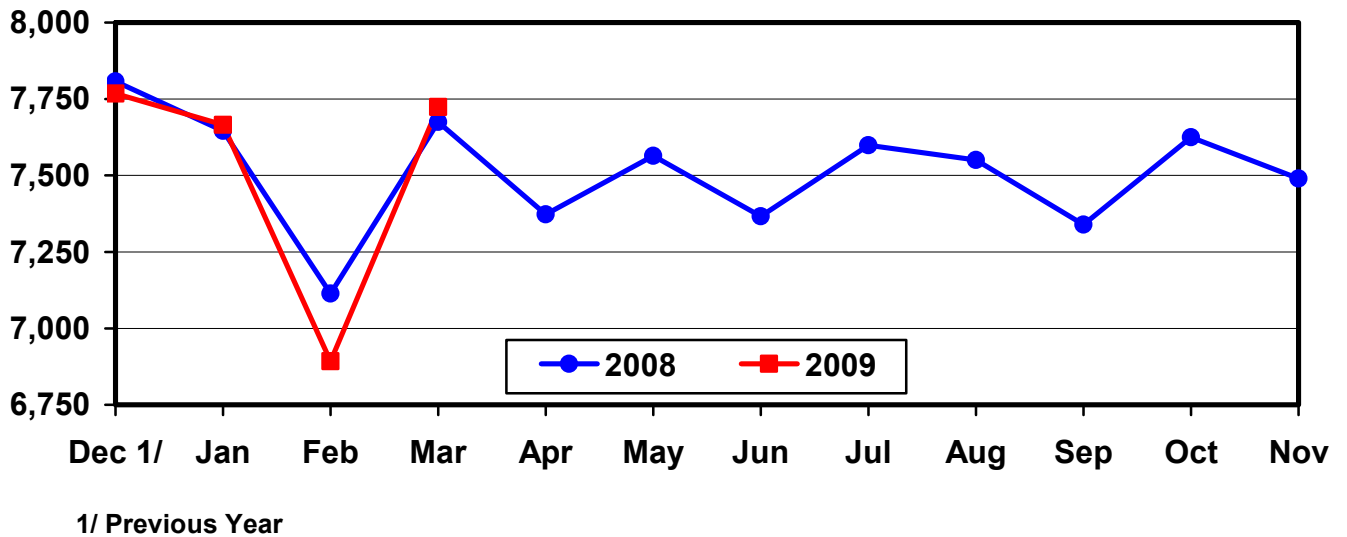
U.S. Average Number of Layers During the Month

Million Layers



U.S. All Egg Production During the Month

Million Eggs



**Layers and Eggs: Layers on Hand and Eggs Produced by Type,
and Forced Molt, United States, February-March 2008-09**

Item	Unit	2008	2009 ¹	2009 as % of 2008
Layers During Feb ²	1,000			
All Layers		343,299	340,614	99
Table Egg Type		282,213	283,216	100
Hatching Egg Type		61,086	57,398	94
Broiler-Type Hatching		58,205	54,341	93
Egg-Type Hatching		2,881	3,057	106
Eggs per 100 Layers During Feb	Number			
All Layers		2,072	2,023	98
Table Egg Type		2,138	2,085	98
Hatching Egg Type		1,768	1,716	97
Broiler-Type Hatching		1,744	1,687	97
Egg-Type Hatching		2,256	2,224	99
Eggs Produced During Feb ²	Million			
All Layers		7,114	6,892	97
Table Egg Type		6,034	5,906	98
Hatching Egg Type		1,080	985	91
Broiler-Type Hatching		1,015	917	90
Egg-Type Hatching		65	68	105
Layers on Mar 1 ²	1,000			
All Layers		342,666	340,260	99
Table Egg Type		281,673	282,930	100
Hatching Egg Type		60,993	57,330	94
Broiler-Type Hatching		58,110	54,256	93
Egg-Type Hatching		2,883	3,074	107
Eggs per 100 Layers on Mar 1	Number			
All Layers		72.2	72.4	100
Table Egg Type		74.6	74.5	100
Hatching Egg Type		61.4	61.7	100
Broiler-Type Hatching		60.7	60.8	100
Egg-Type Hatching		76.7	79.1	103
Forced Molt Layers on Mar 1	Percent			
Percent Being Molted		2.4	3.4	142
Percent with Molt Completed		22.1	21.4	97
Layers Sold for Slaughter During Feb	1,000	13,596	14,570	107
Layers Rendered, Died, Destroyed, Composted or Disappeared For Any Reason During Feb	1,000	7,364	7,252	98
Pullets on Mar 1	1,000	102,370	99,309	97
Pullets Added During Feb ³	1,000	19,508	20,602	106

¹ Revised.

² Totals may not add due to rounding.

³ Pullet chicks less than 3 days old added to pullet flocks.

**Layers and Eggs: Layers on Hand and Eggs Produced by Type,
and Forced Molt, United States, March-April 2008-09**

Item	Unit	2008	2009	2009 as % of 2008
Layers During Mar ¹	1,000			
All Layers		342,017	340,451	100
Table Egg Type		281,182	283,068	101
Hatching Egg Type		60,835	57,383	94
Broiler-Type Hatching		57,942	54,309	94
Egg-Type Hatching		2,893	3,074	106
Eggs per 100 Layers During Mar	Number			
All Layers		2,244	2,269	101
Table Egg Type		2,318	2,343	101
Hatching Egg Type		1,905	1,905	100
Broiler-Type Hatching		1,883	1,874	100
Egg-Type Hatching		2,351	2,440	104
Eggs Produced During Mar ¹	Million			
All Layers		7,675	7,724	101
Table Egg Type		6,517	6,632	102
Hatching Egg Type		1,159	1,093	94
Broiler-Type Hatching		1,091	1,018	93
Egg-Type Hatching		68	75	110
Layers on Apr 1 ¹	1,000			
All Layers		341,320	340,597	100
Table Egg Type		280,664	283,181	101
Hatching Egg Type		60,656	57,416	95
Broiler-Type Hatching		57,761	54,346	94
Egg-Type Hatching		2,895	3,070	106
Eggs per 100 Layers on Apr 1	Number			
All Layers		72.4	73.9	102
Table Egg Type		74.8	76.5	102
Hatching Egg Type		61.2	61.1	100
Broiler-Type Hatching		60.4	60.1	100
Egg-Type Hatching		76.8	77.5	101
Forced Molt Layers on Apr 1	Percent			
Percent Being Molted		2.8	1.9	68
Percent with Molt Completed		21.3	21.7	102
Layers Sold for Slaughter During Mar	1,000	14,147	13,874	98
Layers Rendered, Died, Destroyed, Composted or Disappeared For Any Reason During Mar	1,000	8,029	7,501	93
Pullets on Apr 1	1,000	102,657	100,769	98
Pullets Added During Mar ²	1,000	23,045	23,796	103

¹ Totals may not add due to rounding.

² Pullet chicks less than 3 days old added to pullet flocks.

**Layers and Eggs: Layers on Hand and Eggs Produced by State
and United States, During February 2008-09**

State	Table Egg Layers in Flocks 30,000 and Above		All Layers		Eggs per 100 for All Layers	
	2008	2009 ¹	2008	2009 ¹	2008	2009 ¹
	<i>1,000</i>	<i>1,000</i>	<i>1,000</i>	<i>1,000</i>	<i>Number</i>	<i>Number</i>
AL	1,332	1,415	9,537	9,332	1,804	1,725
AR	3,796	3,495	14,000	12,863	1,779	1,765
CA	19,281	19,465	19,578	19,770	2,002	2,023
CO	3,362	3,409	3,905	3,890	2,254	2,288
CT	2,756	2,678	2,819	2,741	2,128	2,080
FL	10,402	9,627	10,876	9,948	2,161	1,960
GA	9,513	9,360	19,163	18,214	1,946	1,905
HI	330	307	353	334	1,728	1,557
IL	5,193	5,021	5,420	5,235	2,122	2,006
IN	23,751	23,655	24,474	24,399	2,112	2,029
IA	52,651	52,855	53,624	53,796	2,068	2,050
ME	4,172	3,584	4,240	3,667	2,123	1,909
MD	2,511	2,064	2,624	2,188	2,058	1,920
MI	8,970	9,446	9,134	9,610	2,233	2,216
MN	9,726	9,677	10,199	10,176	2,167	2,113
MS	1,634	1,450	6,376	5,967	1,882	1,877
MO	5,592	5,875	6,930	7,176	2,208	2,132
NE	9,904	9,623	9,954	9,673	2,230	2,161
NY	3,808	3,885	4,031	4,103	2,282	2,218
NC	4,830	5,279	12,717	12,454	1,942	1,951
OH	25,587	26,856	26,040	27,300	2,093	2,018
OR	2,431	2,339	2,570	2,486	2,451	2,333
PA	20,461	21,500	21,535	22,648	2,275	2,181
SC	3,443	3,098	4,696	4,389	1,895	1,982
SD	2,543	2,447	2,603	2,487	2,036	2,211
TX	14,092	13,820	18,834	18,432	2,103	2,018
VA	1,240	1,342	3,070	2,942	1,759	1,801
WA	5,355	6,014	5,424	6,129	2,212	2,105
WI	4,313	4,256	4,726	4,836	2,074	2,068
Oth Sts ²	15,042	14,903	23,847	23,429	2,042	1,968
US	278,021	278,745	343,299	340,614	2,072	2,023

¹ Revised.

² Not published separately to avoid disclosing data for individual operations.

**Layers and Eggs: Layers on Hand and Eggs Produced by State
and United States, During March 2008-09**

State	Table Egg Layers in Flocks 30,000 and Above		All Layers		Eggs per 100 for All Layers	
	2008	2009	2008	2009	2008	2009
	<i>1,000</i>	<i>1,000</i>	<i>1,000</i>	<i>1,000</i>	<i>Number</i>	<i>Number</i>
AL	1,289	1,432	9,495	9,297	1,927	1,958
AR	3,789	3,519	13,881	12,789	1,967	1,986
CA	19,595	19,450	19,889	19,747	2,192	2,274
CO	3,351	3,404	3,895	3,854	2,465	2,543
CT	2,770	2,754	2,838	2,822	2,326	2,339
FL	10,260	9,628	10,697	9,989	2,272	2,222
GA	9,452	9,216	19,043	18,048	2,101	2,166
HI	328	310	352	337	1,847	1,751
IL	5,089	5,048	5,316	5,261	2,333	2,224
IN	23,722	23,507	24,415	24,315	2,306	2,311
IA	52,416	52,936	53,390	53,883	2,236	2,272
ME	4,141	3,450	4,204	3,531	2,307	2,181
MD	2,425	2,108	2,555	2,247	2,192	2,225
MI	9,025	9,666	9,189	9,830	2,459	2,411
MN	9,643	9,721	10,108	10,235	2,285	2,374
MS	1,617	1,484	6,267	6,042	2,026	2,085
MO	5,804	5,817	7,093	7,095	2,354	2,396
NE	9,691	9,697	9,741	9,747	2,392	2,360
NY	3,784	3,926	4,007	4,141	2,446	2,487
NC	4,869	5,304	12,666	12,504	2,108	2,127
OH	25,479	26,906	25,930	27,349	2,352	2,300
OR	2,428	2,290	2,573	2,433	2,565	2,630
PA	20,378	21,510	21,466	22,642	2,436	2,456
SC	3,419	2,979	4,711	4,276	2,080	2,198
SD	2,526	2,416	2,586	2,456	2,204	2,443
TX	14,106	13,777	18,918	18,323	2,252	2,265
VA	1,227	1,246	3,104	2,907	1,997	2,064
WA	5,494	6,007	5,563	6,122	2,355	2,369
WI	4,121	4,368	4,546	4,947	2,200	2,345
Oth Sts ¹	14,751	14,721	23,579	23,282	2,184	2,199
US	276,989	278,597	342,017	340,451	2,244	2,269

¹ Not published separately to avoid disclosing data for individual operations.

**Egg Production: By Type, State, and United States,
February 2008-09**

State	Total Production ¹		Table Eggs ²		Hatching Eggs ²	
	2008	2009 ³	2008	2009 ³	2008	2009
	<i>Million Eggs</i>	<i>Million Eggs</i>	<i>Million Eggs</i>	<i>Million Eggs</i>	<i>Million Eggs</i>	<i>Million Eggs</i>
AL	172	161	29	28	143	133
AR	249	227	76	73	173	154
CA	392	400				
CO	88	89				
CT	60	57				
FL	235	195	226	190	9	5
GA	373	347	199	194	174	153
HI	6.1	5.2	6.1	5.2	0	0
IL	115	105	112	102	3	3
IN	517	495	505	483	12	12
IA	1,109	1,103	1,094	1,089	15	14
ME	90	70				
MD	54	42	53	41	1	1
MI	204	213				
MN	221	215	213	207	8	8
MS	120	112	36	33	84	79
MO	153	153				
NE	222	209	222	209	0	0
NY	92	91				
NC	247	243	113	123	134	120
OH	545	551				
OR	63	58	61	56	2	2
PA	490	494	472	475	18	19
SC	89	87	69	66	20	21
SD	53	55	53	55	0	0
TX	396	372				
VA	54	53	24	27	30	26
WA	120	129				
WI	98	100				
Oth Sts ⁴	487	461	352	337	135	124
US ¹	7,114	6,892	6,034	5,906	1,080	985

¹ Totals may not add due to rounding.

² Data by type of flock not shown for some States to avoid disclosing individual operations, data included in US totals.

³ Revised.

⁴ Not published separately to avoid disclosing data for individual operations.

**Egg Production: By Type, State, and United States,
March 2008-09**

State	Total Production ¹		Table Eggs ²		Hatching Eggs ²	
	2008	2009	2008	2009	2008	2009
	<i>Million Eggs</i>	<i>Million Eggs</i>	<i>Million Eggs</i>	<i>Million Eggs</i>	<i>Million Eggs</i>	<i>Million Eggs</i>
AL	183	182	30	34	153	148
AR	273	254	88	84	185	170
CA	436	449				
CO	96	98				
CT	66	66				
FL	243	222	234	215	9	7
GA	400	391	216	222	184	169
HI	6.5	5.9	6.5	5.9	0	0
IL	124	117	120	114	4	3
IN	563	562	551	547	12	15
IA	1,194	1,224	1,177	1,208	17	16
ME	97	77				
MD	56	50	55	49	1	1
MI	226	237				
MN	231	243	223	234	8	9
MS	127	126	39	36	88	90
MO	167	170				
NE	233	230	233	230	0	0
NY	98	103				
NC	267	266	121	134	146	132
OH	610	629				
OR	66	64	64	62	2	2
PA	523	556	504	536	19	20
SC	98	94	76	72	22	22
SD	57	60	57	60	0	0
TX	426	415				
VA	62	60	28	31	34	29
WA	131	145				
WI	100	116				
Oth Sts ³	515	512	370	374	146	139
US ¹	7,675	7,724	6,517	6,632	1,159	1,093

¹ Totals may not add due to rounding.

² Data by type of flock not shown for some States to avoid disclosing individual operations, data included in US totals.

³ Not published separately to avoid disclosing data for individual operations.

**Forced Molt: Percent of All Layers by Month,
United States, 2008-09**

Month	Percent Being Molted ¹		Percent with Molt Completed ¹	
	2008	2009	2008	2009
	<i>Percent</i>	<i>Percent</i>	<i>Percent</i>	<i>Percent</i>
Jan	3.0	3.2	22.7	21.2
Feb	3.9	3.4	21.7	21.4
Mar ³	2.4	3.4	22.1	21.4
Apr	2.8	1.9	21.3	21.7
May	4.1		20.8	
Jun	3.7		20.9	
Jul	3.4		20.8	
Aug	3.9		21.2	
Sep	3.9		20.8	
Oct	3.7		21.9	
Nov	2.1		22.7	
Dec	1.9		22.1	

¹ As of first of month.

² Revised 2009 only.

**Forced Molt: Percent of All Layers by State
and United States, April 1, 2008-09**

State	Percent Being Molted ¹		Percent with Molt Completed ¹	
	2008	2009	2008	2009
	<i>Percent</i>	<i>Percent</i>	<i>Percent</i>	<i>Percent</i>
AL	0.5	0.5	5.0	6.0
AR	1.5	0.0	8.0	11.0
CA	3.0	2.0	32.0	29.0
CO	2.5	0.0	17.5	19.0
CT	0.0	0.0	11.0	19.0
FL	7.5	2.5	32.5	34.0
GA	1.5	1.0	12.0	11.5
HI	8.5	10.5	61.0	52.0
IL	4.0	0.0	25.0	34.5
IN	2.0	2.5	33.0	37.5
IA	4.5	3.5	32.5	35.0
ME	0.0	0.0	0.0	0.0
MD	3.5	0.0	16.5	19.0
MI	0.0	1.5	19.5	20.0
MN	3.0	2.5	28.5	24.5
MS	2.0	1.0	9.0	9.5
MO	0.0	1.5	18.0	9.5
NE	1.5	1.5	7.0	1.0
NY	1.0	1.0	6.0	7.0
NC	0.5	0.0	8.0	11.5
OH	1.5	2.5	15.0	17.0
OR	6.5	4.5	31.5	34.0
PA	2.5	2.0	11.5	12.5
SC	6.5	1.0	25.5	17.0
SD	5.0	2.5	18.0	38.0
TX	3.5	2.0	23.5	18.5
VA	6.0	0.0	22.5	11.5
WA	5.5	5.0	33.5	33.5
WI	2.0	0.0	40.0	25.0
Oth Sts ²	4.4	2.0	20.0	19.8
US	2.8	1.9	21.3	21.7

¹ As of first of month.

² Not published separately to avoid disclosing data for individual operations.

**Hatchery Production: Eggs in Incubators, Chicks Hatched,
and Placements by Type, United States, March-April 2008-09**

Item	2008	2009	2009 as % of 2008
	<i>1,000</i>	<i>1,000</i>	<i>Percent</i>
Egg-Type			
Eggs in Incubators on Apr 1	37,624	37,629	100
Chicks Hatched During Mar	39,547	40,137	101
Chicks Hatched Jan thru Mar	117,263	115,081	98
Pullets Hatched During Mar for Intended Placements in Hatchery Supply Flocks	245	277	113
7-18 Months Earlier ¹	2,865	2,990	104
Broiler-Type			
Eggs in Incubators on Apr 1	673,687	624,921	93
Chicks Hatched During Mar	832,899	783,348	94
Chicks Hatched Jan thru Mar	2,425,962	2,262,662	93
Pullets Hatched During Mar for Intended Placements in Hatchery Supply Flocks	7,090	6,678	94
7-15 Months Earlier ²	65,397	65,958	101

¹ 2009 includes pullet chicks hatched Sep 2007 through Aug 2008.

² 2009 includes pullet chicks hatched Dec 2007 through Aug 2008.

**Egg-Type Eggs in Incubators: By Region and United States,
April 1, 2008-09**

Region	2008	2009	2009 as % of 2008
	<i>1,000</i>	<i>1,000</i>	<i>Percent</i>
North Atlantic	4,792	5,782	121
E North Central	7,532	7,782	103
W North Central	9,237	9,149	99
South Atlantic	4,765	3,949	83
South Central	5,373	5,487	102
West	5,925	5,480	92
US	37,624	37,629	100

**Egg-Type Chicks Hatched: By State and United States,
March 2008-09**

State	During March			Jan-Mar		
	2008	2009	2009 as % of 2008	2008	2009	2009 as % of 2008
	<i>1,000</i>	<i>1,000</i>	<i>Percent</i>	<i>1,000</i>	<i>1,000</i>	<i>Percent</i>
GA	2,342	2,371	101	6,874	6,652	97
IN	5,174	5,681	110	16,189	16,275	101
IA	7,520	7,813	104	22,005	21,827	99
MN	933	1,137	122	2,402	3,406	142
PA	4,698	5,042	107	15,019	14,755	98
Oth Sts ¹	18,880	18,093	96	54,774	52,166	95
US	39,547	40,137	101	117,263	115,081	98

¹ Not published separately to avoid disclosing data for individual operations.

Egg-Type Chicks Hatched: By Month, United States, 2008-09

Month	By Months			Cumulative		
	2008	2009	2009 as % of 2008	2008	2009	2009 as % of 2008
	<i>1,000</i>	<i>1,000</i>	<i>Percent</i>	<i>1,000</i>	<i>1,000</i>	<i>Percent</i>
Jan	40,167	38,083	95	40,167	38,083	95
Feb	37,549	36,861	98	77,716	74,944	96
Mar	39,547	40,137	101	117,263	115,081	98
Apr	41,051			158,314		
May	42,724			201,038		
Jun	42,538			243,576		
Jul	37,929			281,505		
Aug	36,301			317,806		
Sep	36,428			354,234		
Oct	39,998			394,232		
Nov	36,607			430,839		
Dec	36,393			467,232		

**Intended Placements: Egg-Type Pullet Chicks for Hatchery Supply
Flocks by Month and Total, United States, 2008-09**

Month	Pullet Chicks Hatched		2009 as % of 2008	Cumulative Potential Plcmts Relative to Current Supply Flocks 7-18 Months Earlier ¹	
	2008	2009		2008	2009
	<i>1,000</i>	<i>1,000</i>	<i>Percent</i>	<i>1,000</i>	<i>1,000</i>
Jan	210	240	114	3,007	2,928
Feb	280	256	91	2,871	2,989
Mar	245	277	113	2,865	2,990
Apr	264			2,905	2,900
May	227			2,867	2,989
Jun	231			2,942	3,025
Jul	244			2,982	2,979
Aug	279			2,927	3,009
Sep	210			3,042	2,985
Oct	273			2,971	3,017
Nov	317			2,961	
Dec	199			2,997	
Total	2,979				

¹ For March 2009, includes breeder pullet chicks hatched Sep 2007 through Aug 2008. The 7-18 months represent the first laying cycle. Molting and additional laying cycles will increase the cumulative potential placements.

**Broiler-Type Eggs in Incubators: By Region
and United States, April 1, 2008-09**

Region	2008	2009	2009 as % of 2008
	<i>1,000</i>	<i>1,000</i>	<i>Percent</i>
North Atlantic	12,991	11,538	89
E North Central	12,094	12,330	102
W North Central	29,348	27,860	95
South Atlantic	250,185	231,993	93
South Central	343,441	316,829	92
West	25,628	24,371	95
US	673,687	624,921	93

**Broiler-Type Chicks Hatched: By State
and United States, March 2008-09**

State	During March			Jan-Mar		
	2008	2009	2009 as % of 2008	2008	2009	2009 as % of 2008
	<i>1,000</i>	<i>1,000</i>	<i>Percent</i>	<i>1,000</i>	<i>1,000</i>	<i>Percent</i>
AL	117,903	110,186	93	345,516	316,866	92
AR	104,873	91,131	87	305,188	264,440	87
DE	14,451	12,933	89	43,179	36,660	85
FL	5,215	3,650	70	15,002	10,919	73
GA	127,686	119,397	94	373,970	349,116	93
KY	28,439	27,913	98	82,441	80,406	98
LA	14,648	11,570	79	42,170	36,369	86
MD	33,458	33,034	99	97,695	93,777	96
MS	71,018	67,563	95	206,485	191,302	93
NC	73,340	69,611	95	213,767	202,253	95
OK	23,807	25,050	105	69,753	71,450	102
PA	15,110	14,546	96	44,871	41,712	93
SC	20,254	19,998	99	58,821	58,370	99
TX	59,560	58,623	98	169,903	167,167	98
VA	23,560	22,300	95	67,762	63,205	93
CA, MO, TN, & WV	74,542	72,236	97	214,140	207,528	97
19 Sts ¹	807,864	759,741	94	2,350,663	2,191,540	93
Oth Sts ²	25,035	23,607	94	75,299	71,122	94
US	832,899	783,348	94	2,425,962	2,262,662	93

¹ States in the weekly hatchery production estimating program.

² Not published separately to avoid disclosing data for individual operations.

Broiler-Type Chicks Hatched: By Month, United States, 2008-09

Month	By Months			Cumulative		
	2008	2009	2009 as % of 2008	2008	2009	2009 as % of 2008
	<i>1,000</i>	<i>1,000</i>	<i>Percent</i>	<i>1,000</i>	<i>1,000</i>	<i>Percent</i>
Jan	821,866	778,401	95	821,866	778,401	95
Feb	771,197	700,913	91	1,593,063	1,479,314	93
Mar	832,899	783,348	94	2,425,962	2,262,662	93
Apr	797,481			3,223,443		
May	823,718			4,047,161		
Jun	806,202			4,853,363		
Jul	806,555			5,659,918		
Aug	799,625			6,459,543		
Sep	756,565			7,216,108		
Oct	742,121			7,958,229		
Nov	705,587			8,663,816		
Dec	779,160			9,442,976		

**Intended Placements: Broiler-Type Pullet Chicks for Hatchery
Supply Flocks by Month and Total, 2008-09**

Month	Pullet Chicks Hatched		2009 as % of 2008	Cumulative Potential Plcmts Relative to Current Supply Flocks 7-15 Months Earlier ¹	
	2008	2009		2008	2009
	<i>1,000</i>	<i>1,000</i>	<i>Percent</i>	<i>1,000</i>	<i>1,000</i>
US Place- ments					
Jan	7,012	7,142	102	65,333	66,073
Feb	7,536	7,215	96	65,223	65,867
Mar	7,090	6,678	94	65,397	65,958
Apr	6,867			65,567	65,596
May	8,217			65,522	65,423
Jun	7,527			66,057	64,913
Jul	6,764			66,170	64,403
Aug	7,697			66,490	64,678
Sep	6,886			65,943	63,676
Oct	6,839			65,234	62,827
Nov	7,026			65,467	
Dec	6,580			65,892	
Annual Total	86,041				
Total Place- ments ²					
Jan	8,706	8,410	97		
Feb	9,498	8,524	90		
Mar	9,245	8,461	92		
Apr	8,676				
May	10,089				
Jun	9,339				
Jul	8,319				
Aug	9,603				
Sep	8,651				
Oct	8,350				
Nov	8,704				
Dec	8,197				
Annual Total	107,377				

¹ For Mar 2009, includes breeder pullet chicks hatched Dec 2007 through Aug 2008.

² U.S. production of intended placements worldwide.

Reliability of Chickens and Eggs Estimates

Survey Procedures: Primary data for the "**Chickens and Eggs**" report are from weekly and/or monthly questionnaires sent to producers. An attempt is made to collect information for layer and egg estimates from each known contractor and independent producer who has at least 30,000 table egg layers, flocks of hatchery supply layers, or pullet only operations with at least 500 pullets. Coverage for operations with less than 30,000 table egg layers are estimated each month based on data reported in December. Approximately 650 contractors, independent egg producers, and pullet only operations are contacted each month. All known hatcheries, approximately 300, are contacted for information on a weekly and/or monthly basis.

Estimating Procedures: Sound statistical methodology is employed to derive estimates from the reported data. All data are analyzed for unusual values. Data from each operation are compared to their own past operating profile and to trends from similar operations. Data for missing operations are estimated based on similar operations or historical data. NASS field offices prepare these estimates by using a combination of survey indications and historic trends. Individual State estimates are reviewed by the Agricultural Statistics Board for reasonableness. Individual hatchery data are summed to State, regional, and U.S. totals.

For chicken hatcheries, chicks hatched consist of all chicks of domesticated breeds including males and chicks destined for hatchery supply flocks and research purposes. Eggs set are eggs in incubators for the purpose of hatching. The relationship of egg-type chicks hatched to chicken inventory and poultry marketings are carefully monitored. The disposition of egg-type chicks hatched prior to placement into the laying flock can vary significantly, which can make comparisons to changes in layer inventory inconsistent over time. Broiler chicks placed are specifically placed on feed for meat production. Intended placement data reported by leading breeders include pullet chicks expected from eggs sold the preceding month. The breeders in this report account for a large percentage of replacement pullets for hatchery supply flocks. Production of replacement pullets by these breeders indicates the number of pullets available to hatchery supply layer flocks several months before the pullets will actually move into the laying flocks. "Hatchery Supply Flocks" include all generations of layers which could lay eggs to supply a hatchery. This includes the generations of parents, grandparents, great-grandparents, pedigree, etc. Also included are research flocks, vaccine flocks, and specific pathogen-free flocks. The broiler cumulative potential placements are a moving total of the intended placements 7-15 months earlier. The egg-type cumulative potential placements of 7-18 months earlier represent the first laying cycle. Molting and additional laying cycles will increase the cumulative potential placements of egg-type hatching flocks.

Revision Policy: The previous month's estimates are subject to revision if late reports or corrected data indicates a different level. Additionally, revisions after the monthly report will be made at the end of the marketing year and published in the annual reports of "**Chickens and Eggs Summary**" and "**Hatchery Production**".

Reliability: Estimates are based on a census of all known contractors and independent producers who have at least 30,000 table egg layers, flocks of hatchery supply layers, pullet only operations with at least 500 pullets, or operating hatcheries and therefore, have no sampling error. However, estimates are subject to errors such as omission, duplication, and mistakes in reporting, recording, and processing the data. While these errors cannot be measured directly, they are minimized through strict quality controls in the data collection process and a careful review of all reported data for consistency and reasonableness.

To assist in evaluating the reliability of the estimates in this report, the "Root Mean Square Error" is shown for selected items in the following table. The "Root Mean Square Error" is a statistical measure based on past performance and is computed using the differences between first and final estimates. The "Root Mean Square Error" for all layers over the past 24 months is 1.0 percent. This means that chances are 2 out of 3 that the final estimate will not be above or below the current estimate of 340 million layers by more than 1.0 percent. Chances are 9 out of 10 that the difference will not exceed 1.8 percent.

Reliability of Layer and Egg Estimates

Item	Root Mean Square Error	90 Percent Confidence Level		Difference Between First and Latest Estimates			Number of Months	
				Average	Smallest	Largest	First Above Latest	First Below Latest
				<i>1,000</i>	<i>1,000</i>	<i>1,000</i>	<i>Number</i>	<i>Number</i>
All Layers	<i>Percent</i> 1.0	<i>Percent</i> 1.8	<i>1,000</i> 61	<i>1,000</i> 1,541	<i>1,000</i> 10	<i>1,000</i> 3,947	<i>Number</i> 9	<i>Number</i> 15
Eggs	0.6	1.1	<i>Million Eggs</i> 1	<i>Million Eggs</i> 34	<i>Million Eggs</i> 0	<i>Million Eggs</i> 86	9	14

Regional Listing

North Atlantic: CT, ME, MA, NH, NJ, NY, PA, RI, VT.

East North Central: IL, IN, MI, OH, WI.

West North Central: IA, KS, MN, MO, NE, ND, SD.

South Atlantic: DE, FL, GA, MD, NC, SC, VA, WV.

South Central: AL, AR, KY, LA, MS, OK, TN, TX.

West: AK, AZ, CA, CO, HI, ID, MT, NM, NV, OR, UT, WA, WY.

Terms and Definitions of Chickens and Eggs Estimates

All Layers includes both table egg and hatching egg flocks regardless of size.

Intended Placements are reported by leading breeders. Coverage may not be 100 percent. Includes expected pullet chicks from eggs sold during the preceding month at the rate of 125 pullet chicks per case of 30 dozen eggs.

Information Contacts

Listed below are the commodity specialists in the Livestock Branch of the National Agricultural Statistics Service to contact for additional information.

- Dan Kerestes, Chief, Livestock Branch(202) 720-3570
- Bruce Boess, Head, Poultry and Specialty Commodities Section.....(202) 720-4447
- David Colwell - Cold Storage(202) 720-8784
- Fleming Gibson - Poultry Slaughter, Turkey Hatchery, Turkeys Raised.....(202) 690-3237
- Sharyn Lavender - Broiler Hatchery, Chicken Hatchery, Honey(202) 720-3244
- Kim Linonis - Layers, Eggs(202) 690-8632
- Bruce Boess - Catfish Processing, Catfish Production, Trout Production,
Census of Aquaculture, Egg Products, Mink(202) 720-4447

ACCESS TO REPORTS!!

For your convenience, there are several ways to obtain NASS reports, data products, and services:

INTERNET ACCESS

All NASS reports are available free of charge. For free access, connect to the Internet and go to the NASS Home Page at: www.nass.usda.gov.

E-MAIL SUBSCRIPTION

All NASS reports are available by subscription free of charge direct to your e-mail address. Starting with the NASS Home Page at www.nass.usda.gov, under the right navigation, *Receive reports by Email*, click on **National** or **State**. Follow the instructions on the screen.

PRINTED REPORTS OR DATA PRODUCTS

CALL OUR TOLL-FREE ORDER DESK: 800-999-6779 (U.S. and Canada)
Other areas, please call 703-605-6220 FAX: 703-605-6900
(Visa, MasterCard, check, or money order acceptable for payment.)

ASSISTANCE

For **assistance** with general agricultural statistics or further information about NASS or its products or services, contact the **Agricultural Statistics Hotline** at **800-727-9540**, 7:30 a.m. to 4:00 p.m. ET, or e-mail: nass@nass.usda.gov.

The U.S. Department of Agriculture (USDA) prohibits discrimination in all its programs and activities on the basis of race, color, national origin, age, disability, and where applicable, sex, marital status, familial status, parental status, religion, sexual orientation, genetic information, political beliefs, reprisal, or because all or a part of an individual's income is derived from any public assistance program. (Not all prohibited bases apply to all programs.) Persons with disabilities who require alternative means for communication of program information (Braille, large print, audiotape, etc.) should contact USDA's TARGET Center at (202) 720-2600 (voice and TDD).

To file a complaint of discrimination, write to USDA, Director, Office of Civil Rights, 1400 Independence Avenue, S.W., Washington, D.C. 20250-9410, or call (800) 795-3272 (voice) or (202) 720-6382 (TDD). USDA is an equal opportunity provider and employer.