

# Chickens and Eggs

---

Released June 22, 2009, by the National Agricultural Statistics Service (NASS), Agricultural Statistics Board, U.S. Department of Agriculture. For information on "Layers and Eggs" call Kim Linonis at (202) 690-8632, for "Chicks Hatched" call Sharyn Lavender at (202) 720-3244, office hours 7:30 a.m. to 4:00 p.m. ET.

## May Egg Production Up Slightly

U.S. egg production totaled 7.60 billion during May 2009, up slightly from last year. Production included 6.51 billion table eggs, and 1.09 billion hatching eggs, of which 1.02 billion were broiler-type and 73 million were egg-type. The total number of layers during May 2009 averaged 337 million, down 1 percent from last year. May egg production per 100 layers was 2,256 eggs, up 1 percent from May 2008.

All layers in the U.S. on June 1, 2009 totaled 335 million, down 2 percent from last year. The 335 million layers consisted of 277 million layers producing table or market type eggs, 54.2 million layers producing broiler-type hatching eggs, and 2.91 million layers producing egg-type hatching eggs. Rate of lay per day on June 1, 2009, averaged 73.1 eggs per 100 layers, up 2 percent from June 1, 2008.

## Egg-Type Chicks Hatched Down 10 Percent

Egg-type chicks hatched during May 2009 totaled 37.8 million, down 10 percent from May 2008. Eggs in incubators totaled 36.4 million on June 1, 2009, down 3 percent from a year ago.

Domestic placements of egg-type pullet chicks for future hatchery supply flocks by leading breeders totaled 275 thousand during May 2009, up 21 percent from May 2008.

## Broiler-Type Chicks Hatched Down 5 Percent

Broiler-type chicks hatched during May 2009 totaled 786 million, down 5 percent from May 2008. Eggs in incubators totaled 634 million on June 1, 2009, down 6 percent from a year earlier.

Leading breeders placed 7.40 million broiler-type pullet chicks for future domestic hatchery supply flocks during May 2009, down 10 percent from May 2008.



**Contents**

**Page**

U.S. Average Number of Layers on Hand and Egg Production..... 1

U.S. Layers on Hand and Eggs Produced by Type, Forced Molt, and Pullets..... 3

Layers on Hand and Eggs Produced by State..... 5

Egg Production by Type and State ..... 7

Forced Molt ..... 9

U.S. Hatchery Production Summary ..... 10

Egg-Type Hatchery ..... 11

Egg-Type Intended Placements ..... 12

Broiler-Type Hatchery ..... 12

Broiler-Type Intended Placements ..... 14

Reliability of Chickens and Eggs Estimates..... 15

Regional Listing ..... 16

Terms and Definitions of Chickens and Eggs Estimates..... 16

Information Contacts..... 16

**All Layers: Average Number on Hand During the Month,  
United States, 2008-09**

Month	2008	2009
	<i>1,000 Layers</i>	<i>1,000 Layers</i>
Dec <sup>1</sup>	346,225	340,302
Jan	344,737	340,936
Feb	343,299	340,614
Mar	342,017	340,455
Apr <sup>2</sup>	340,838	339,745
May	340,116	336,699
Jun	338,664	
Jul	336,276	
Aug	335,265	
Sep	334,489	
Oct	334,937	
Nov	337,995	

<sup>1</sup> December preceding year.

<sup>2</sup> Revised 2009 only.

**Eggs: Production During the Month by Type,  
United States, 2008-09**

Month	Total Eggs <sup>1</sup>		Table Eggs		Hatching Eggs	
	2008	2009	2008	2009	2008	2009
	<i>Million Eggs</i>	<i>Million Eggs</i>	<i>Million Eggs</i>	<i>Million Eggs</i>	<i>Million Eggs</i>	<i>Million Eggs</i>
Dec <sup>2</sup>	7,808	7,768	6,666	6,701	1,143	1,068
Jan	7,646	7,666	6,498	6,591	1,149	1,075
Feb	7,114	6,892	6,034	5,906	1,080	985
Mar	7,675	7,724	6,517	6,632	1,159	1,093
Apr <sup>3</sup>	7,373	7,461	6,256	6,408	1,117	1,053
May	7,564	7,597	6,409	6,505	1,155	1,092
Jun	7,367		6,262		1,104	
Jul	7,599		6,474		1,125	
Aug	7,551		6,436		1,115	
Sep	7,339		6,272		1,067	
Oct	7,625		6,538		1,088	
Nov	7,490		6,446		1,044	
During Year <sup>1</sup>	90,151		76,811		13,346	

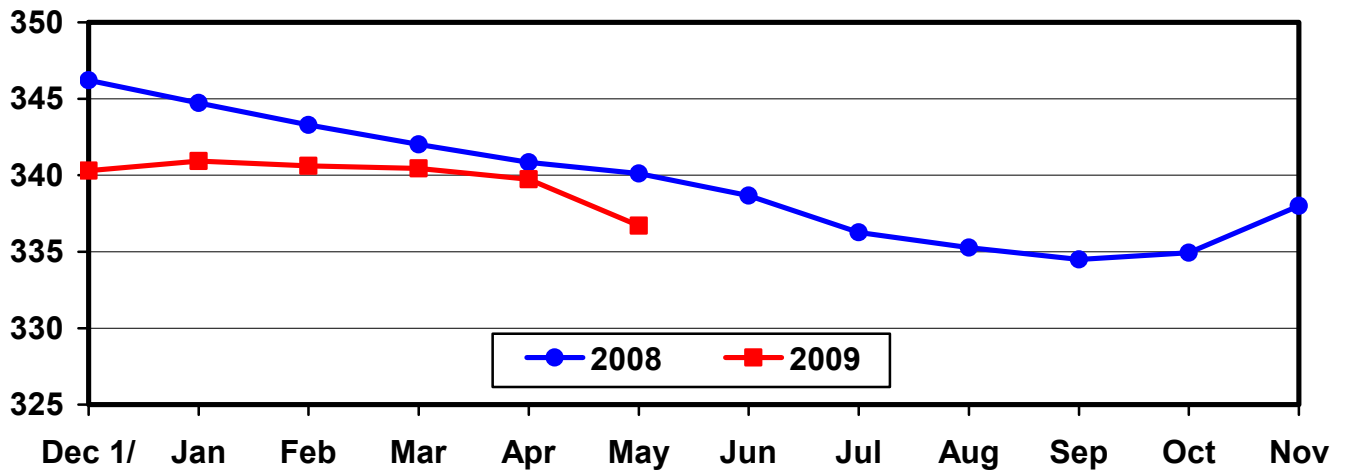
<sup>1</sup> Totals may not add due to rounding.

<sup>2</sup> December preceding year.

<sup>3</sup> Revised 2009 only.

## U.S. Average Number of Layers During the Month

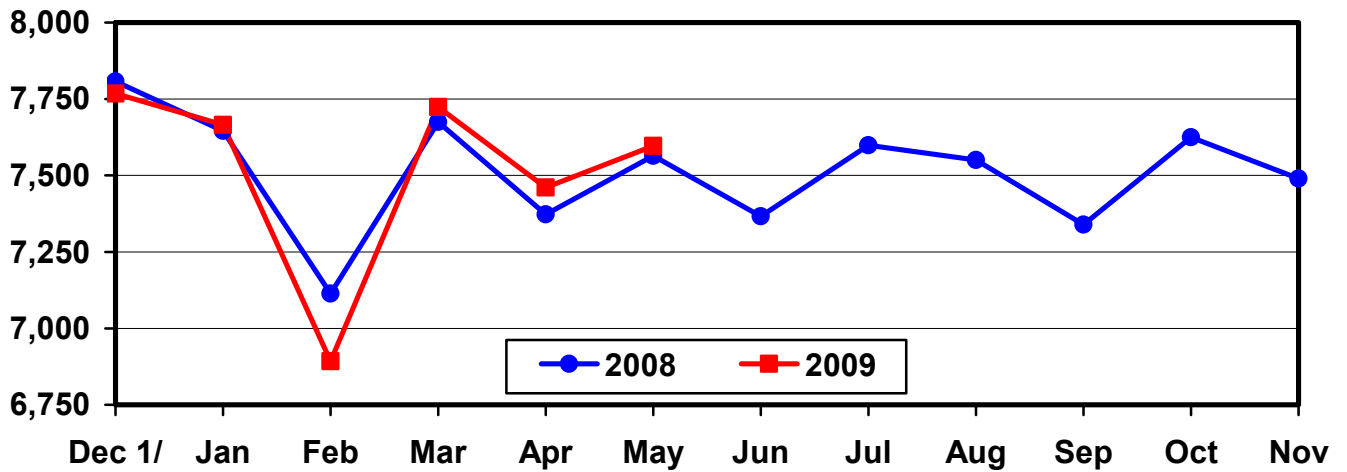
Million Layers



1/ Previous Year

## U.S. All Egg Production During the Month

Million Eggs



1/ Previous Year

**Layers and Eggs: Layers on Hand and Eggs Produced by Type,  
and Forced Molt, United States, April-May 2008-09**

Item	Unit	2008	2009 <sup>1</sup>	2009 as % of 2008
Layers During Apr <sup>2</sup>	1,000			
All Layers		340,838	339,745	100
Table Egg Type		279,937	282,455	101
Hatching Egg Type		60,901	57,290	94
Broiler-Type Hatching		58,006	54,248	94
Egg-Type Hatching		2,895	3,042	105
Eggs per 100 Layers During Apr	Number			
All Layers		2,163	2,196	102
Table Egg Type		2,235	2,269	102
Hatching Egg Type		1,834	1,838	100
Broiler-Type Hatching		1,810	1,810	100
Egg-Type Hatching		2,314	2,334	101
Eggs Produced During Apr <sup>2</sup>	Million			
All Layers		7,373	7,461	101
Table Egg Type		6,256	6,408	102
Hatching Egg Type		1,117	1,053	94
Broiler-Type Hatching		1,050	982	94
Egg-Type Hatching		67	71	106
Layers on May 1 <sup>2</sup>	1,000			
All Layers		340,318	338,850	100
Table Egg Type		279,191	281,705	101
Hatching Egg Type		61,127	57,145	93
Broiler-Type Hatching		58,240	54,135	93
Egg-Type Hatching		2,887	3,010	104
Eggs per 100 Layers on May 1	Number			
All Layers		71.8	72.4	101
Table Egg Type		74.1	74.6	101
Hatching Egg Type		61.1	61.3	100
Broiler-Type Hatching		60.3	60.3	100
Egg-Type Hatching		78.8	79.8	101
Forced Molt Layers on May 1	Percent			
Percent Being Molted		4.1	4.5	110
Percent with Molt Completed		20.8	20.5	99
Layers Sold for Slaughter During Apr	1,000	14,318	14,306	100
Layers Rendered, Died, Destroyed, Composted or Disappeared For Any Reason During Apr	1,000	7,643	8,183	107
Pullets on May 1	1,000	104,237	99,603	96
Pullets Added During Apr <sup>3</sup>	1,000	22,968	20,998	91

<sup>1</sup> Revised.

<sup>2</sup> Totals may not add due to rounding.

<sup>3</sup> Pullet chicks less than 3 days old added to pullet flocks.

**Layers and Eggs: Layers on Hand and Eggs Produced by Type,  
and Forced Molt, United States, May-June 2008-09**

Item	Unit	2008	2009	2009 as % of 2008
Layers During May <sup>1</sup>	1,000			
All Layers		340,116	336,699	99
Table Egg Type		279,322	279,573	100
Hatching Egg Type		60,794	57,126	94
Broiler-Type Hatching		57,924	54,166	94
Egg-Type Hatching		2,870	2,960	103
Eggs per 100 Layers During May	Number			
All Layers		2,224	2,256	101
Table Egg Type		2,294	2,327	101
Hatching Egg Type		1,900	1,912	101
Broiler-Type Hatching		1,875	1,881	100
Egg-Type Hatching		2,404	2,466	103
Eggs Produced During May <sup>1</sup>	Million			
All Layers		7,564	7,597	100
Table Egg Type		6,409	6,505	101
Hatching Egg Type		1,155	1,092	95
Broiler-Type Hatching		1,086	1,019	94
Egg-Type Hatching		69	73	106
Layers on Jun 1 <sup>1</sup>	1,000			
All Layers		339,867	334,508	98
Table Egg Type		279,430	277,419	99
Hatching Egg Type		60,437	57,089	94
Broiler-Type Hatching		57,595	54,181	94
Egg-Type Hatching		2,842	2,908	102
Eggs per 100 Layers on Jun 1	Number			
All Layers		71.7	73.1	102
Table Egg Type		73.9	75.4	102
Hatching Egg Type		61.3	61.7	101
Broiler-Type Hatching		60.5	60.8	100
Egg-Type Hatching		77.7	79.2	102
Forced Molt Layers on Jun 1	Percent			
Percent Being Molted		3.7	3.4	92
Percent with Molt Completed		20.9	21.3	102
Layers Sold for Slaughter During May	1,000	14,064	14,891	106
Layers Rendered, Died, Destroyed, Composted or Disappeared For Any Reason During May	1,000	8,599	8,857	103
Pullets on Jun 1	1,000	101,971	101,111	99
Pullets Added During May <sup>2</sup>	1,000	21,004	21,756	104

<sup>1</sup> Totals may not add due to rounding.

<sup>2</sup> Pullet chicks less than 3 days old added to pullet flocks.

**Layers and Eggs: Layers on Hand and Eggs Produced by State  
and United States, During April 2008-09**

State	Table Egg Layers in Flocks 30,000 and Above		All Layers		Eggs per 100 for All Layers	
	2008	2009 <sup>1</sup>	2008	2009 <sup>1</sup>	2008	2009
	<i>1,000</i>	<i>1,000</i>	<i>1,000</i>	<i>1,000</i>	<i>Number</i>	<i>Number</i>
AL	1,256	1,398	9,438	9,364	1,865	1,890
AR	3,572	3,422	13,590	12,467	1,898	1,957
CA	20,131	19,476	20,423	19,774	2,081	2,190
CO	3,380	3,293	3,894	3,772	2,337	2,466
CT	2,846	2,819	2,911	2,884	2,302	2,323
FL	10,012	9,514	10,460	9,894	2,113	2,244
GA	9,106	9,042	18,673	17,779	2,008	2,081
HI	326	312	351	339	1,738	1,740
IL	5,166	5,112	5,393	5,302	2,169	2,263
IN	23,569	23,283	24,280	24,091	2,224	2,262
IA	52,783	52,811	53,727	53,742	2,196	2,207
ME	4,025	3,330	4,094	3,417	2,223	2,136
MD	2,500	2,024	2,646	2,173	2,116	2,071
MI	8,987	9,626	9,149	9,790	2,350	2,257
MN	9,648	9,753	10,142	10,250	2,218	2,244
MS	1,517	1,506	6,250	6,101	1,920	1,967
MO	5,801	5,780	7,101	7,064	2,281	2,336
NE	9,666	9,716	9,716	9,766	2,336	2,324
NY	3,718	3,881	3,941	4,096	2,411	2,441
NC	5,000	5,533	12,660	12,784	2,022	2,042
OH	25,184	26,846	25,640	27,293	2,293	2,224
OR	2,419	2,375	2,574	2,515	2,409	2,465
PA	20,101	21,559	21,210	22,699	2,348	2,383
SC	3,296	3,059	4,604	4,388	2,107	2,028
SD	2,463	2,332	2,523	2,372	2,180	2,277
TX	13,782	13,639	18,620	18,184	2,127	2,183
VA	1,228	1,151	3,143	2,886	1,941	2,010
WA	5,536	6,050	5,605	6,165	2,302	2,287
WI	4,002	4,420	4,436	5,005	2,074	2,298
Oth Sts <sup>2</sup>	14,723	14,922	23,644	23,389	2,081	2,104
US	275,743	277,984	340,838	339,745	2,163	2,196

<sup>1</sup> Revised.

<sup>2</sup> Not published separately to avoid disclosing data for individual operations.



**Layers and Eggs: Layers on Hand and Eggs Produced by State  
and United States, During May 2008-09**

State	Table Egg Layers in Flocks 30,000 and Above		All Layers		Eggs per 100 for All Layers	
	2008	2009	2008	2009	2008	2009
	<i>1,000</i>	<i>1,000</i>	<i>1,000</i>	<i>1,000</i>	<i>Number</i>	<i>Number</i>
AL	1,273	1,381	9,522	9,348	1,922	1,936
AR	3,637	3,328	13,732	12,254	1,959	2,016
CA	20,422	19,448	20,716	19,754	2,148	2,253
CO	3,193	3,243	3,706	3,721	2,402	2,580
CT	2,796	2,764	2,859	2,826	2,308	2,371
FL	9,938	9,234	10,389	9,605	2,214	2,311
GA	8,931	8,888	18,443	17,486	2,050	2,110
HI	313	306	336	333	1,815	1,832
IL	5,154	4,961	5,381	5,144	2,211	2,391
IN	23,552	22,841	24,251	23,583	2,284	2,336
IA	52,718	52,863	53,643	53,755	2,291	2,271
ME	3,871	3,326	3,947	3,419	2,280	2,164
MD	2,358	1,988	2,496	2,131	2,163	2,065
MI	8,958	9,620	9,117	9,787	2,369	2,319
MN	9,691	9,599	10,192	10,096	2,325	2,288
MS	1,462	1,428	6,257	6,178	1,998	2,023
MO	5,680	5,907	7,008	7,208	2,297	2,372
NE	9,533	9,521	9,583	9,571	2,463	2,466
NY	3,790	3,836	4,005	4,050	2,497	2,519
NC	4,965	5,492	12,547	12,773	2,088	2,153
OH	25,483	26,441	25,942	26,898	2,251	2,279
OR	2,427	2,357	2,581	2,506	2,363	2,474
PA	20,111	21,269	21,225	22,377	2,422	2,422
SC	3,290	3,163	4,598	4,537	2,131	2,006
SD	2,450	2,341	2,510	2,381	2,351	2,310
TX	13,485	13,086	18,213	17,632	2,202	2,235
VA	1,287	1,065	3,198	2,865	2,001	2,059
WA	5,496	6,171	5,564	6,286	2,390	2,354
WI	4,093	4,321	4,520	4,905	2,124	2,283
Oth Sts <sup>1</sup>	14,773	14,914	23,635	23,290	2,137	2,181
US	275,130	275,102	340,116	336,699	2,224	2,256

<sup>1</sup> Not published separately to avoid disclosing data for individual operations.

**Egg Production: By Type, State, and United States,  
April 2008-09**

State	Total Production <sup>1</sup>		Table Eggs <sup>2</sup>		Hatching Eggs <sup>2</sup>	
	2008	2009 <sup>3</sup>	2008	2009	2008	2009 <sup>3</sup>
	<i>Million Eggs</i>	<i>Million Eggs</i>	<i>Million Eggs</i>	<i>Million Eggs</i>	<i>Million Eggs</i>	<i>Million Eggs</i>
AL	176	177	28	32	148	145
AR	258	244	80	83	178	161
CA	425	433				
CO	91	93				
CT	67	67				
FL	221	222	213	215	8	7
GA	375	370	198	209	177	161
HI	6.1	5.9	6.1	5.9	0	0
IL	117	120	114	117	3	3
IN	540	545	528	530	12	15
IA	1,180	1,186	1,164	1,171	16	15
ME	91	73				
MD	56	45	54	43	2	2
MI	215	221				
MN	225	230	217	222	8	8
MS	120	120	33	35	87	85
MO	162	165				
NE	227	227	227	227	0	0
NY	95	100				
NC	256	261	119	135	137	126
OH	588	607				
OR	62	62	60	60	2	2
PA	498	541	479	521	19	20
SC	97	89	75	67	22	22
SD	55	54	55	54	0	0
TX	396	397				
VA	61	58	27	28	34	30
WA	129	141				
WI	92	115				
Oth Sts <sup>4</sup>	492	492	351	360	141	132
US <sup>1</sup>	7,373	7,461	6,256	6,408	1,117	1,053

<sup>1</sup> Totals may not add due to rounding.

<sup>2</sup> Data by type of flock not shown for some States to avoid disclosing individual operations, data included in US totals.

<sup>3</sup> Revised.

<sup>4</sup> Not published separately to avoid disclosing data for individual operations.

**Egg Production: By Type, State, and United States,  
May 2008-09**

State	Total Production <sup>1</sup>		Table Eggs <sup>2</sup>		Hatching Eggs <sup>2</sup>	
	2008	2009	2008	2009	2008	2009
	<i>Million Eggs</i>	<i>Million Eggs</i>	<i>Million Eggs</i>	<i>Million Eggs</i>	<i>Million Eggs</i>	<i>Million Eggs</i>
AL	183	181	30	31	153	150
AR	269	247	83	81	186	166
CA	445	445				
CO	89	96				
CT	66	67				
FL	230	222	222	216	8	6
GA	378	369	197	204	181	165
HI	6.1	6.1	6.1	6.1	0	0
IL	119	123	115	120	4	3
IN	554	551	542	537	12	14
IA	1,229	1,221	1,213	1,206	16	15
ME	90	74				
MD	54	44	52	42	2	2
MI	216	227				
MN	237	231	228	223	9	8
MS	125	125	34	34	91	91
MO	161	171				
NE	236	236	236	236	0	0
NY	100	102				
NC	262	275	121	142	141	133
OH	584	613				
OR	61	62	59	60	2	2
PA	514	542	494	522	20	20
SC	98	91	76	68	22	23
SD	59	55	59	55	0	0
TX	401	394				
VA	64	59	29	26	35	33
WA	133	148				
WI	96	112				
Oth Sts <sup>3</sup>	505	508	359	370	146	138
US <sup>1</sup>	7,564	7,597	6,409	6,505	1,155	1,092

<sup>1</sup> Totals may not add due to rounding.

<sup>2</sup> Data by type of flock not shown for some States to avoid disclosing individual operations, data included in US totals.

<sup>3</sup> Not published separately to avoid disclosing data for individual operations.

**Forced Molt: Percent of All Layers by Month,  
United States, 2008-09**

Month	Percent Being Molted <sup>1</sup>		Percent with Molt Completed <sup>1</sup>	
	2008	2009	2008	2009
	<i>Percent</i>	<i>Percent</i>	<i>Percent</i>	<i>Percent</i>
Jan	3.0	3.2	22.7	21.2
Feb	3.9	3.4	21.7	21.4
Mar	2.4	3.4	22.1	21.4
Apr	2.8	1.9	21.3	21.7
May	4.1	4.5	20.8	20.5
Jun	3.7	3.4	20.9	21.3
Jul	3.4		20.8	
Aug	3.9		21.2	
Sep	3.9		20.8	
Oct	3.7		21.9	
Nov	2.1		22.7	
Dec	1.9		22.1	

<sup>1</sup> As of first of month.

**Forced Molt: Percent of All Layers by State  
and United States, June 1, 2008-09**

State	Percent Being Molted <sup>1</sup>		Percent with Molt Completed <sup>1</sup>	
	2008	2009	2008	2009
	<i>Percent</i>	<i>Percent</i>	<i>Percent</i>	<i>Percent</i>
AL	1.5	1.5	3.5	6.5
AR	1.0	2.5	9.0	10.0
CA	7.5	5.5	28.0	29.5
CO	1.5	6.0	21.5	16.0
CT	0.0	0.0	11.0	13.0
FL	7.0	7.5	31.0	28.0
GA	2.5	4.5	10.0	12.0
HI	7.5	11.0	64.0	52.0
IL	3.5	5.0	25.5	34.0
IN	3.5	2.5	35.5	36.0
IA	4.0	2.0	34.0	33.5
ME	0.0	0.0	0.0	0.0
MD	4.0	2.0	19.0	22.5
MI	6.0	3.5	18.0	22.5
MN	3.0	3.0	28.5	23.5
MS	1.0	3.0	10.0	8.5
MO	0.5	2.0	18.0	14.0
NE	2.0	0.0	2.0	1.5
NY	1.0	2.5	6.0	5.5
NC	1.0	0.0	8.5	10.5
OH	8.0	6.5	14.0	18.5
OR	6.0	6.0	20.5	34.5
PA	2.0	4.0	11.0	12.0
SC	3.5	4.5	20.5	18.0
SD	6.5	2.5	19.5	25.0
TX	2.0	4.5	24.5	16.5
VA	2.5	0.0	19.0	8.5
WA	4.5	7.0	31.5	30.0
WI	4.5	2.0	29.5	32.5
Oth Sts <sup>2</sup>	4.4	3.4	19.3	21.2
US	3.7	3.4	20.9	21.3

<sup>1</sup> As of first of month.

<sup>2</sup> Not published separately to avoid disclosing data for individual operations.

**Hatchery Production: Eggs in Incubators, Chicks Hatched,  
and Placements by Type, United States, May-June 2008-09**

Item	2008	2009	2009 as % of 2008
	<i>1,000</i>	<i>1,000</i>	<i>Percent</i>
<b>Egg-Type</b>			
Eggs in Incubators on Jun 1	37,666	36,360	97
Chicks Hatched During May	41,826	37,774	90
Chicks Hatched Jan thru May	204,899	193,476	94
Pullets Hatched During May for Intended Placements in Hatchery Supply Flocks	227	275	121
7-18 Months Earlier <sup>1</sup>	2,867	2,968	104
<b>Broiler-Type</b>			
Eggs in Incubators on Jun 1	673,711	634,425	94
Chicks Hatched During May	825,323	786,471	95
Chicks Hatched Jan thru May	4,065,068	3,804,995	94
Pullets Hatched During May for Intended Placements in Hatchery Supply Flocks	8,217	7,402	90
7-15 Months Earlier <sup>2</sup>	65,522	65,203	100

<sup>1</sup> 2009 includes pullet chicks hatched Nov 2007 through Oct 2008.

<sup>2</sup> 2009 includes pullet chicks hatched Feb 2008 through Oct 2008.

**Egg-Type Eggs in Incubators: By Region and United States,  
June 1, 2008-09**

Region	2008	2009	2009 as % of 2008
	<i>1,000</i>	<i>1,000</i>	<i>Percent</i>
North Atlantic	5,350	5,293	99
E North Central	7,845	8,513	109
W North Central	9,821	9,258	94
South Atlantic	4,824	4,178	87
South Central	5,551	5,379	97
West	4,275	3,739	87
US	37,666	36,360	97

**Egg-Type Chicks Hatched: By Month, United States, 2008-09**

Month	By Months			Cumulative		
	2008	2009	2009 as % of 2008	2008	2009	2009 as % of 2008
	<i>1,000</i>	<i>1,000</i>	<i>Percent</i>	<i>1,000</i>	<i>1,000</i>	<i>Percent</i>
Jan	40,256	38,083	95	40,256	38,083	95
Feb	38,534	36,861	96	78,790	74,944	95
Mar	41,954	40,137	96	120,744	115,081	95
Apr	42,329	40,621	96	163,073	155,702	95
May	41,826	37,774	90	204,899	193,476	94
Jun	40,928			245,827		
Jul	37,250			283,077		
Aug	35,578			318,655		
Sep	37,111			355,766		
Oct	40,198			395,964		
Nov	34,187			430,151		
Dec	37,091			467,242		

**Intended Placements: Egg-Type Pullet Chicks for Hatchery Supply  
Flocks by Month and Total, United States, 2008-09**

Month	Pullet Chicks Hatched		2009 as % of 2008	Cumulative Potential Plcmts Relative to Current Supply Flocks 7-18 Months Earlier <sup>1</sup>	
	2008	2009		2008	2009
	<i>1,000</i>	<i>1,000</i>	<i>Percent</i>	<i>1,000</i>	<i>1,000</i>
Jan	198	240	121	3,007	2,907
Feb	271	256	94	2,871	2,968
Mar	245	277	113	2,865	2,969
Apr	264	307	116	2,905	2,879
May	227	275	121	2,867	2,968
Jun	231			2,942	3,004
Jul	244			2,982	2,958
Aug	279			2,915	3,000
Sep	210			3,021	2,985
Oct	273			2,950	3,017
Nov	317			2,940	3,060
Dec	199			2,976	3,108
Total	2,958				

<sup>1</sup> For May 2009, includes breeder pullet chicks hatched Nov 2007 through Oct 2008. The 7-18 months represent the first laying cycle. Molting and additional laying cycles will increase the cumulative potential placements.

**Broiler-Type Eggs in Incubators: By Region  
and United States, June 1, 2008-09**

Region	2008	2009	2009 as % of 2008
	<i>1,000</i>	<i>1,000</i>	<i>Percent</i>
North Atlantic	13,477	11,166	83
E North Central	12,094	12,389	102
W North Central	29,476	29,801	101
South Atlantic	244,718	233,025	95
South Central	348,156	323,623	93
West	25,790	24,421	95
US	673,711	634,425	94

**Broiler-Type Chicks Hatched: By State  
and United States, May 2008-09**

State	During May			Jan-May		
	2008	2009	2009 as % of 2008	2008	2009	2009 as % of 2008
	<i>1,000</i>	<i>1,000</i>	<i>Percent</i>	<i>1,000</i>	<i>1,000</i>	<i>Percent</i>
AL	120,288	111,750	93	587,720	536,620	91
AR	100,720	89,379	89	503,894	438,731	87
DE	14,144	13,557	96	71,480	62,944	88
FL	4,949	3,648	74	24,999	18,043	72
GA	125,611	116,763	93	620,530	578,541	93
KY	28,710	28,704	100	139,302	136,750	98
LA	13,751	8,459	62	69,437	52,960	76
MD	32,681	33,418	102	162,762	159,423	98
MS	70,642	67,842	96	346,148	324,508	94
NC	71,786	69,824	97	355,718	340,492	96
OK	26,202	25,891	99	126,504	122,437	97
PA	15,468	14,337	93	75,545	69,486	92
SC	19,933	20,600	103	98,177	98,794	101
TX	56,330	57,070	101	281,977	280,170	99
VA	22,354	23,415	105	112,793	108,825	96
CA, MO, TN, & WV	74,038	74,512	101	360,727	352,760	98
19 Sts <sup>1</sup>	797,607	759,169	95	3,937,713	3,681,484	93
Oth Sts <sup>2</sup>	27,716	27,302	99	127,355	123,511	97
US	825,323	786,471	95	4,065,068	3,804,995	94

<sup>1</sup> States in the weekly hatchery production estimating program.

<sup>2</sup> Not published separately to avoid disclosing data for individual operations.

**Broiler-Type Chicks Hatched: By Month, United States, 2008-09**

Month	By Months			Cumulative		
	2008	2009	2009 as % of 2008	2008	2009	2009 as % of 2008
	<i>1,000</i>	<i>1,000</i>	<i>Percent</i>	<i>1,000</i>	<i>1,000</i>	<i>Percent</i>
Jan	826,027	778,401	94	826,027	778,401	94
Feb	775,280	700,913	90	1,601,307	1,479,314	92
Mar	836,890	783,348	94	2,438,197	2,262,662	93
Apr	801,548	755,862	94	3,239,745	3,018,524	93
May	825,323	786,471	95	4,065,068	3,804,995	94
Jun	805,793			4,870,861		
Jul	805,182			5,676,043		
Aug	799,059			6,475,102		
Sep	755,235			7,230,337		
Oct	740,964			7,971,301		
Nov	705,312			8,676,613		
Dec	779,304			9,455,917		



**Intended Placements: Broiler-Type Pullet Chicks for Hatchery  
Supply Flocks by Month and Total, 2008-09**

Month	Pullet Chicks Hatched		2009 as % of 2008	Cumulative Potential Plcmts Relative to Current Supply Flocks 7-15 Months Earlier <sup>1</sup>	
	2008	2009		2008	2009
	<i>1,000</i>	<i>1,000</i>	<i>Percent</i>	<i>1,000</i>	<i>1,000</i>
US Place- ments					
Jan	7,012	7,142	102	65,333	65,952
Feb	7,536	7,215	96	65,223	65,444
Mar	7,090	6,773	96	65,397	65,535
Apr	7,119	6,158	87	65,567	65,173
May	8,217	7,402	90	65,522	65,203
Jun	7,154			66,057	64,693
Jul	6,462			66,170	64,183
Aug	7,697			66,490	64,206
Sep	6,886			65,943	63,204
Oct	7,042			65,234	62,823
Nov	7,026			65,719	62,519
Dec	6,580			66,144	62,224
Annual Total	85,821				
Total Place- ments <sup>2</sup>					
Jan	8,706	8,410	97		
Feb	9,498	8,524	90		
Mar	9,245	8,626	93		
Apr	8,720	7,664	88		
May	10,089	9,055	90		
Jun	9,228				
Jul	8,017				
Aug	9,603				
Sep	8,651				
Oct	8,361				
Nov	8,704				
Dec	8,197				
Annual Total	107,019				

<sup>1</sup> For May 2009, includes breeder pullet chicks hatched Feb 2008 through Oct 2008.

<sup>2</sup> U.S. production of intended placements worldwide.

## Reliability of Chickens and Eggs Estimates

**Survey Procedures:** Primary data for the "**Chickens and Eggs**" report are from weekly and/or monthly questionnaires sent to producers. An attempt is made to collect information for layer and egg estimates from each known contractor and independent producer who has at least 30,000 table egg layers, flocks of hatchery supply layers, or pullet only operations with at least 500 pullets. Coverage for operations with less than 30,000 table egg layers are estimated each month based on data reported in December. Approximately 650 contractors, independent egg producers, and pullet only operations are contacted each month. All known hatcheries, approximately 300, are contacted for information on a weekly and/or monthly basis.

**Estimating Procedures:** Sound statistical methodology is employed to derive estimates from the reported data. All data are analyzed for unusual values. Data from each operation are compared to their own past operating profile and to trends from similar operations. Data for missing operations are estimated based on similar operations or historical data. NASS field offices prepare these estimates by using a combination of survey indications and historic trends. Individual State estimates are reviewed by the Agricultural Statistics Board for reasonableness. Individual hatchery data are summed to State, regional, and U.S. totals.

For chicken hatcheries, chicks hatched consist of all chicks of domesticated breeds including males and chicks destined for hatchery supply flocks and research purposes. Eggs set are eggs in incubators for the purpose of hatching. The relationship of egg-type chicks hatched to chicken inventory and poultry marketings are carefully monitored. The disposition of egg-type chicks hatched prior to placement into the laying flock can vary significantly, which can make comparisons to changes in layer inventory inconsistent over time. Broiler chicks placed are specifically placed on feed for meat production. Intended placement data reported by leading breeders include pullet chicks expected from eggs sold the preceding month. The breeders in this report account for a large percentage of replacement pullets for hatchery supply flocks. Production of replacement pullets by these breeders indicates the number of pullets available to hatchery supply layer flocks several months before the pullets will actually move into the laying flocks. "Hatchery Supply Flocks" include all generations of layers which could lay eggs to supply a hatchery. This includes the generations of parents, grandparents, great-grandparents, pedigree, etc. Also included are research flocks, vaccine flocks, and specific pathogen-free flocks. The broiler cumulative potential placements are a moving total of the intended placements 7-15 months earlier. The egg-type cumulative potential placements of 7-18 months earlier represent the first laying cycle. Molting and additional laying cycles will increase the cumulative potential placements of egg-type hatching flocks.

**Revision Policy:** The previous month's estimates are subject to revision if late reports or corrected data indicates a different level. Additionally, revisions after the monthly report will be made at the end of the marketing year and published in the annual reports of "**Chickens and Eggs Summary**" and "**Hatchery Production**".

**Reliability:** Estimates are based on a census of all known contractors and independent producers who have at least 30,000 table egg layers, flocks of hatchery supply layers, pullet only operations with at least 500 pullets, or operating hatcheries and therefore, have no sampling error. However, estimates are subject to errors such as omission, duplication, and mistakes in reporting, recording, and processing the data. While these errors cannot be measured directly, they are minimized through strict quality controls in the data collection process and a careful review of all reported data for consistency and reasonableness.

To assist in evaluating the reliability of the estimates in this report, the "Root Mean Square Error" is shown for selected items in the following table. The "Root Mean Square Error" is a statistical measure based on past performance and is computed using the differences between first and final estimates. The "Root Mean Square Error" for all layers over the past 24 months is 0.9 percent. This means that chances are 2 out of 3 that the final estimate will not be above or below the current estimate of 337 million layers by more than 0.9 percent. Chances are 9 out of 10 that the difference will not exceed 1.6 percent.

**Reliability of Layer and Egg Estimates**

Item	Root Mean Square Error	90 Percent Confidence Level		Difference Between First and Latest Estimates			Number of Months	
				Average	Smallest	Largest	First Above Latest	First Below Latest
				<i>1,000</i>	<i>1,000</i>	<i>1,000</i>	<i>Number</i>	<i>Number</i>
All Layers	<i>Percent</i> 0.9	<i>Percent</i> 1.6	<i>1,000</i> 53	<i>1,000</i> 1,227	<i>1,000</i> 4	<i>1,000</i> 3,947	<i>Number</i> 9	<i>Number</i> 15
Eggs	0.5	1.0	<i>Million Eggs</i> 1	<i>Million Eggs</i> 28	<i>Million Eggs</i> 0	<i>Million Eggs</i> 86	9	13

**Regional Listing**

North Atlantic: CT, ME, MA, NH, NJ, NY, PA, RI, VT.

East North Central: IL, IN, MI, OH, WI.

West North Central: IA, KS, MN, MO, NE, ND, SD.

South Atlantic: DE, FL, GA, MD, NC, SC, VA, WV.

South Central: AL, AR, KY, LA, MS, OK, TN, TX.

West: AK, AZ, CA, CO, HI, ID, MT, NM, NV, OR, UT, WA, WY.

**Terms and Definitions of Chickens and Eggs Estimates**

**All Layers** includes both table egg and hatching egg flocks regardless of size.

**Intended Placements** are reported by leading breeders. Coverage may not be 100 percent. Includes expected pullet chicks from eggs sold during the preceding month at the rate of 125 pullet chicks per case of 30 dozen eggs.

**Information Contacts**

Listed below are the commodity specialists in the Livestock Branch of the National Agricultural Statistics Service to contact for additional information.

- Dan Kerestes, Chief, Livestock Branch .....(202) 720-3570
- Bruce Boess, Head, Poultry and Specialty Commodities Section.....(202) 720-4447
- David Colwell - Cold Storage .....(202) 720-8784
- Chris Hawthorn - Catfish Processing, Catfish Production, Trout Production,  
Census of Aquaculture, Egg Products, Mink .....(202) 720-0585
- Sharyn Lavender - Broiler Hatchery, Chicken Hatchery, Honey .....(202) 720-3244
- Kim Linonis - Layers, Eggs .....(202) 690-8632
- Troy Marshall - Poultry Slaughter, Turkey Hatchery, Turkeys Raised.....(202) 690-3237

## ACCESS TO REPORTS!!

---

For your convenience, there are several ways to obtain NASS reports, data products, and services:

### INTERNET ACCESS

All NASS reports are available free of charge. For free access, connect to the Internet and go to the NASS Home Page at: [www.nass.usda.gov](http://www.nass.usda.gov).

### E-MAIL SUBSCRIPTION

All NASS reports are available by subscription free of charge direct to your e-mail address. Starting with the NASS Home Page at [www.nass.usda.gov](http://www.nass.usda.gov), under the right navigation, *Receive reports by Email*, click on **National** or **State**. Follow the instructions on the screen.

-----

### PRINTED REPORTS OR DATA PRODUCTS

**CALL OUR TOLL-FREE ORDER DESK: 800-999-6779 (U.S. and Canada)**  
**Other areas, please call 703-605-6220      FAX: 703-605-6900**  
**(Visa, MasterCard, check, or money order acceptable for payment.)**

-----

### ASSISTANCE

For **assistance** with general agricultural statistics or further information about NASS or its products or services, contact the **Agricultural Statistics Hotline** at **800-727-9540**, 7:30 a.m. to 4:00 p.m. ET, or e-mail: [nass@nass.usda.gov](mailto:nass@nass.usda.gov).

The U.S. Department of Agriculture (USDA) prohibits discrimination in all its programs and activities on the basis of race, color, national origin, age, disability, and where applicable, sex, marital status, familial status, parental status, religion, sexual orientation, genetic information, political beliefs, reprisal, or because all or a part of an individual's income is derived from any public assistance program. (Not all prohibited bases apply to all programs.) Persons with disabilities who require alternative means for communication of program information (Braille, large print, audiotape, etc.) should contact USDA's TARGET Center at (202) 720-2600 (voice and TDD).

To file a complaint of discrimination, write to USDA, Director, Office of Civil Rights, 1400 Independence Avenue, S.W., Washington, D.C. 20250-9410, or call (800) 795-3272 (voice) or (202) 720-6382 (TDD). USDA is an equal opportunity provider and employer.