

Chickens and Eggs

Released September 22, 2009, by the National Agricultural Statistics Service (NASS), Agricultural Statistics Board, U.S. Department of Agriculture. For information on "Layers and Eggs" call Kim Linonis at (202) 690-8632, for "Chicks Hatched" call Troy Marshall at (202) 690-3237, office hours 7:30 a.m. to 4:00 p.m. ET.

August Egg Production Up 1 Percent

U.S. egg production totaled 7.59 billion during August 2009, up 1 percent from last year. Production included 6.51 billion table eggs, and 1.08 billion hatching eggs, of which 1.00 billion were broiler-type and 72 million were egg-type. The total number of layers during August 2009 averaged 332 million, down 1 percent from last year. August egg production per 100 layers was 2,284 eggs, up 1 percent from August 2008.

All layers in the U.S. on September 1, 2009 totaled 333 million, down 1 percent from last year. The 333 million layers consisted of 277 million layers producing table or market type eggs, 52.7 million layers producing broiler-type hatching eggs, and 2.95 million layers producing egg-type hatching eggs. Rate of lay per day on September 1, 2009, averaged 73.8 eggs per 100 layers, up 1 percent from September 1, 2008.

Egg-Type Chicks Hatched Up 4 Percent

Egg-type chicks hatched during August 2009 totaled 37.2 million, up 4 percent from August 2008. Eggs in incubators totaled 36.5 million on September 1, 2009, up slightly from a year ago.

Domestic placements of egg-type pullet chicks for future hatchery supply flocks by leading breeders totaled 291 thousand during August 2009, up 4 percent from August 2008.

Broiler-Type Chicks Hatched Down 3 Percent

Broiler-type chicks hatched during August 2009 totaled 778 million, down 3 percent from August 2008. Eggs in incubators totaled 618 million on September 1, 2009, down 3 percent from a year earlier.

Leading breeders placed 7.13 million broiler-type pullet chicks for future domestic hatchery supply flocks during August 2009, down 7 percent from August 2008.

Contents

Page

U.S. Average Number of Layers on Hand and Egg Production.....	1
U.S. Layers on Hand and Eggs Produced by Type, Forced Molt, and Pullets.....	3
Layers on Hand and Eggs Produced by State.....	5
Egg Production by Type and State.....	7
Forced Molt.....	9
U.S. Hatchery Production Summary.....	10
Egg-Type Hatchery.....	11
Egg-Type Intended Placements.....	12
Broiler-Type Hatchery.....	12
Broiler-Type Intended Placements.....	14
Reliability of Chickens and Eggs Estimates.....	15
Regional Listing.....	16
Terms and Definitions of Chickens and Eggs Estimates.....	16
Information Contacts.....	16

**All Layers: Average Number on Hand During the Month,
United States, 2008-09**

Month	2008	2009
	<i>1,000 Layers</i>	<i>1,000 Layers</i>
Dec ¹	346,225	340,302
Jan	344,737	340,936
Feb	343,299	340,614
Mar	342,017	340,455
Apr	340,838	339,745
May	340,116	336,695
Jun	338,664	333,388
Jul ²	336,276	332,143
Aug	335,265	332,296
Sep	334,489	
Oct	334,937	
Nov	337,995	

¹ December preceding year.

² Revised 2009 only.

**Eggs: Production During the Month by Type,
United States, 2008-09**

Month	Total Eggs ¹		Table Eggs		Hatching Eggs	
	2008	2009	2008	2009	2008	2009
	<i>Million Eggs</i>	<i>Million Eggs</i>	<i>Million Eggs</i>	<i>Million Eggs</i>	<i>Million Eggs</i>	<i>Million Eggs</i>
Dec ²	7,808	7,768	6,666	6,701	1,143	1,068
Jan	7,646	7,666	6,498	6,591	1,149	1,075
Feb	7,114	6,892	6,034	5,906	1,080	985
Mar	7,675	7,724	6,517	6,632	1,159	1,093
Apr	7,373	7,461	6,256	6,408	1,117	1,053
May	7,564	7,597	6,409	6,505	1,155	1,092
Jun	7,367	7,347	6,262	6,291	1,104	1,056
Jul ²	7,599	7,575	6,474	6,494	1,125	1,081
Aug	7,551	7,590	6,436	6,514	1,115	1,076
Sep	7,339		6,272		1,067	
Oct	7,625		6,538		1,088	
Nov	7,490		6,446		1,044	
During Year ¹	90,151		76,811		13,346	

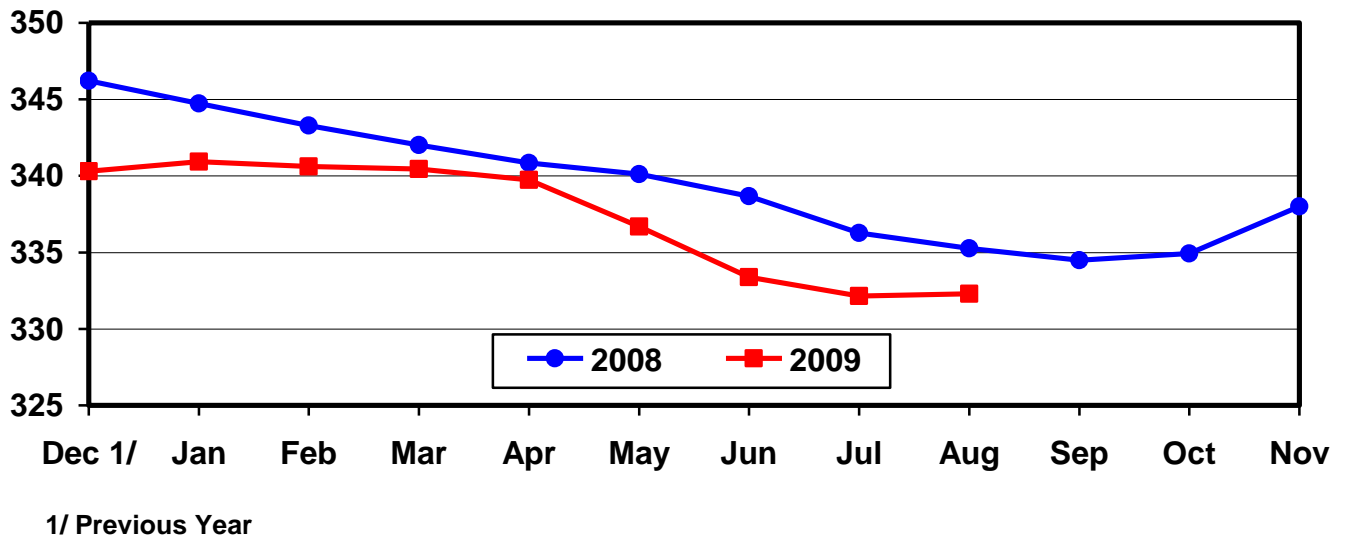
¹ Totals may not add due to rounding.

² December preceding year.

³ Revised 2009 only.

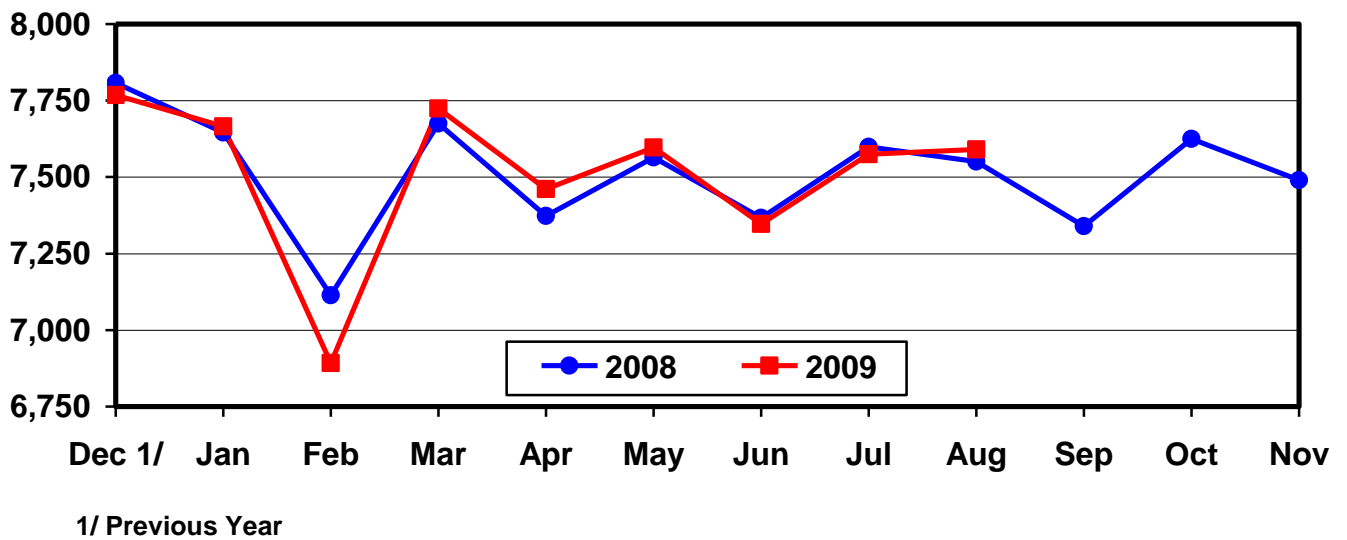
U.S. Average Number of Layers During the Month

Million Layers



U.S. All Egg Production During the Month

Million Eggs



**Layers and Eggs: Layers on Hand and Eggs Produced by Type,
and Forced Molt, United States, July-August 2008-09**

Item	Unit	2008	2009 ¹	2009 as % of 2008
Layers During Jul ²	1,000			
All Layers		336,276	332,143	99
Table Egg Type		277,447	275,964	99
Hatching Egg Type		58,829	56,179	95
Broiler-Type Hatching		56,102	53,288	95
Egg-Type Hatching		2,727	2,891	106
Eggs per 100 Layers During Jul	Number			
All Layers		2,260	2,281	101
Table Egg Type		2,333	2,353	101
Hatching Egg Type		1,912	1,924	101
Broiler-Type Hatching		1,889	1,895	100
Egg-Type Hatching		2,384	2,456	103
Eggs Produced During Jul ²	Million			
All Layers		7,599	7,575	100
Table Egg Type		6,474	6,494	100
Hatching Egg Type		1,125	1,081	96
Broiler-Type Hatching		1,060	1,010	95
Egg-Type Hatching		65	71	109
Layers on Aug 1 ²	1,000			
All Layers		335,094	332,015	99
Table Egg Type		276,666	276,268	100
Hatching Egg Type		58,428	55,747	95
Broiler-Type Hatching		55,706	52,863	95
Egg-Type Hatching		2,722	2,884	106
Eggs per 100 Layers on Aug 1	Number			
All Layers		72.4	73.4	101
Table Egg Type		74.7	75.6	101
Hatching Egg Type		61.5	62.4	101
Broiler-Type Hatching		60.8	61.4	101
Egg-Type Hatching		75.7	79.5	105
Forced Molt Layers on Aug 1	Percent			
Percent Being Molted		3.9	2.7	69
Percent with Molt Completed		21.2	21.1	100
Layers Sold for Slaughter During Jul	1,000	13,491	14,366	106
Layers Rendered, Died, Destroyed, Composted or Disappeared For Any Reason During Jul	1,000	8,390	8,354	100
Pullets on Aug 1	1,000	103,190	100,260	97
Pullets Added During Jul ³	1,000	21,137	22,486	106

¹ Revised.

² Totals may not add due to rounding.

³ Pullet chicks less than 3 days old added to pullet flocks.

**Layers and Eggs: Layers on Hand and Eggs Produced by Type,
and Forced Molt, United States, August-September 2008-09**

Item	Unit	2008	2009	2009 as % of 2008
Layers During Aug ¹	1,000			
All Layers		335,265	332,296	99
Table Egg Type		277,191	276,580	100
Hatching Egg Type		58,074	55,716	96
Broiler-Type Hatching		55,328	52,796	95
Egg-Type Hatching		2,746	2,920	106
Eggs per 100 Layers During Aug	Number			
All Layers		2,252	2,284	101
Table Egg Type		2,322	2,355	101
Hatching Egg Type		1,920	1,931	101
Broiler-Type Hatching		1,896	1,902	100
Egg-Type Hatching		2,403	2,466	103
Eggs Produced During Aug ¹	Million			
All Layers		7,551	7,590	101
Table Egg Type		6,436	6,514	101
Hatching Egg Type		1,115	1,076	97
Broiler-Type Hatching		1,049	1,004	96
Egg-Type Hatching		66	72	109
Layers on Sep 1 ¹	1,000			
All Layers		335,396	332,534	99
Table Egg Type		277,695	276,872	100
Hatching Egg Type		57,701	55,662	96
Broiler-Type Hatching		54,938	52,715	96
Egg-Type Hatching		2,763	2,947	107
Eggs per 100 Layers on Sep 1	Number			
All Layers		72.8	73.8	101
Table Egg Type		75.0	76.1	101
Hatching Egg Type		62.4	62.1	100
Broiler-Type Hatching		61.6	61.1	99
Egg-Type Hatching		77.9	78.7	101
Forced Molt Layers on Sep 1	Percent			
Percent Being Molted		3.9	2.9	74
Percent with Molt Completed		20.8	21.1	101
Layers Sold for Slaughter During Aug	1,000	14,242	13,728	96
Layers Rendered, Died, Destroyed, Composted or Disappeared For Any Reason During Aug	1,000	6,600	7,058	107
Pullets on Sep 1	1,000	102,657	100,724	98
Pullets Added During Aug ²	1,000	22,479	23,034	102

¹ Totals may not add due to rounding.

² Pullet chicks less than 3 days old added to pullet flocks.

**Layers and Eggs: Layers on Hand and Eggs Produced by State
and United States, During July 2008-09**

State	Table Egg Layers in Flocks 30,000 and Above		All Layers		Eggs per 100 for All Layers	
	2008	2009 ¹	2008	2009 ¹	2008	2009 ¹
	<i>1,000</i>	<i>1,000</i>	<i>1,000</i>	<i>1,000</i>	<i>Number</i>	<i>Number</i>
AL	1,255	1,208	9,215	8,958	1,932	1,942
AR	3,613	3,311	13,198	12,034	2,000	2,028
CA	20,080	19,077	20,378	19,385	2,208	2,321
CO	3,305	3,141	3,817	3,628	2,436	2,453
CT	2,743	2,839	2,808	2,902	2,315	2,412
FL	9,591	9,251	9,974	9,611	2,206	2,247
GA	9,086	8,682	18,236	17,288	2,067	2,129
HI	311	301	333	327	1,892	1,835
IL	5,154	4,878	5,381	5,087	2,286	2,359
IN	23,193	22,237	23,896	22,962	2,327	2,317
IA	52,380	52,648	53,304	53,496	2,323	2,292
ME	3,801	3,328	3,873	3,416	2,169	2,196
MD	2,312	1,877	2,459	2,021	2,277	2,276
MI	9,169	9,506	9,331	9,656	2,422	2,465
MN	9,341	9,578	9,811	10,079	2,334	2,252
MS	1,537	1,347	6,298	5,783	2,064	2,110
MO	5,317	6,049	6,622	7,347	2,386	2,355
NE	9,368	9,558	9,418	9,608	2,410	2,456
NY	3,635	3,855	3,846	4,078	2,470	2,501
NC	4,723	5,362	12,213	12,516	2,063	2,117
OH	25,986	25,656	26,436	26,114	2,342	2,328
OR	2,512	2,233	2,652	2,384	2,564	2,559
PA	20,447	21,439	21,565	22,507	2,430	2,457
SC	3,058	3,014	4,338	4,333	2,282	2,146
SD	2,407	2,363	2,467	2,403	2,229	2,455
TX	13,511	12,893	18,096	17,379	2,244	2,284
VA	1,288	1,315	3,035	3,171	2,043	2,018
WA	5,361	5,752	5,425	5,867	2,304	2,369
WI	4,076	4,237	4,485	4,808	2,341	2,371
Oth Sts ²	14,696	14,559	23,366	22,995	2,178	2,209
US	273,256	271,494	336,276	332,143	2,260	2,281

¹ Revised.

² Not published separately to avoid disclosing data for individual operations.

**Layers and Eggs: Layers on Hand and Eggs Produced by State
and United States, During August 2008-09**

State	Table Egg Layers in Flocks 30,000 and Above		All Layers		Eggs per 100 for All Layers	
	2008	2009	2008	2009	2008	2009
	<i>1,000</i>	<i>1,000</i>	<i>1,000</i>	<i>1,000</i>	<i>Number</i>	<i>Number</i>
AL	1,389	1,227	9,363	9,006	1,922	1,954
AR	3,695	3,380	12,972	11,873	2,043	2,080
CA	20,102	19,434	20,405	19,740	2,235	2,310
CO	3,282	3,184	3,793	3,645	2,505	2,524
CT	2,862	2,611	2,926	2,670	2,256	2,472
FL	9,530	9,373	9,927	9,705	2,196	2,267
GA	9,141	8,611	18,016	17,210	2,065	2,162
HI	308	299	329	326	1,854	1,810
IL	5,172	4,597	5,394	4,804	2,243	2,373
IN	22,886	22,314	23,560	23,087	2,292	2,283
IA	52,312	52,779	53,251	53,643	2,270	2,293
ME	3,691	3,329	3,763	3,417	2,153	2,253
MD	2,421	1,892	2,559	2,021	2,423	2,326
MI	9,069	9,545	9,230	9,695	2,459	2,517
MN	9,276	9,656	9,737	10,147	2,331	2,306
MS	1,463	1,312	6,168	5,565	2,075	2,084
MO	5,229	5,926	6,517	7,184	2,363	2,339
NE	9,599	9,595	9,649	9,645	2,435	2,447
NY	3,693	3,833	3,904	4,057	2,536	2,465
NC	4,861	5,523	12,263	12,578	2,104	2,091
OH	25,561	25,564	26,003	26,021	2,311	2,317
OR	2,503	2,258	2,658	2,393	2,521	2,591
PA	20,542	21,415	21,665	22,490	2,396	2,446
SC	3,025	3,164	4,298	4,516	2,257	2,126
SD	2,449	2,406	2,509	2,446	2,272	2,535
TX	13,580	12,901	18,175	17,438	2,223	2,288
VA	1,211	1,272	2,979	3,148	2,081	2,033
WA	5,435	6,001	5,497	6,116	2,292	2,305
WI	3,988	4,249	4,396	4,837	2,343	2,315
Oth Sts ¹	14,726	14,459	23,359	22,873	2,209	2,230
US	273,001	272,109	335,265	332,296	2,252	2,284

¹ Not published separately to avoid disclosing data for individual operations.

**Egg Production: By Type, State, and United States,
July 2008-09**

State	Total Production ¹		Table Eggs ²		Hatching Eggs ²	
	2008	2009 ³	2008	2009 ³	2008	2009
	<i>Million Eggs</i>	<i>Million Eggs</i>	<i>Million Eggs</i>	<i>Million Eggs</i>	<i>Million Eggs</i>	<i>Million Eggs</i>
AL	178	174	30	29	148	145
AR	264	244	85	80	179	164
CA	450	450				
CO	93	89				
CT	65	70				
FL	220	216	214	211	6	5
GA	377	368	199	200	178	168
HI	6.3	6.0	6.3	6.0	0	0
IL	123	120	119	117	4	3
IN	556	532	544	519	12	13
IA	1,238	1,226	1,223	1,213	15	13
ME	84	75				
MD	56	46	54	44	2	2
MI	226	238				
MN	229	227	220	218	9	9
MS	130	122	38	35	92	87
MO	158	173				
NE	227	236	227	236	0	0
NY	95	102				
NC	252	265	118	134	134	131
OH	619	608				
OR	68	61	66	59	2	2
PA	524	553	504	534	20	19
SC	99	93	76	70	23	23
SD	55	59	55	59	0	0
TX	406	397				
VA	62	64	30	29	32	35
WA	125	139				
WI	105	114				
Oth Sts ⁴	509	508	365	370	144	138
US ¹	7,599	7,575	6,474	6,494	1,125	1,081

¹ Totals may not add due to rounding.

² Data by type of flock not shown for some States to avoid disclosing individual operations, data included in US totals.

³ Revised.

⁴ Not published separately to avoid disclosing data for individual operations.

**Egg Production: By Type, State, and United States,
August 2008-09**

State	Total Production ¹		Table Eggs ²		Hatching Eggs ²	
	2008	2009	2008	2009	2008	2009
	<i>Million Eggs</i>	<i>Million Eggs</i>	<i>Million Eggs</i>	<i>Million Eggs</i>	<i>Million Eggs</i>	<i>Million Eggs</i>
AL	180	176	33	30	147	146
AR	265	247	90	86	175	161
CA	456	456				
CO	95	92				
CT	66	66				
FL	218	220	211	216	7	4
GA	372	372	201	202	171	170
HI	6.1	5.9	6.1	5.9	0	0
IL	121	114	118	111	3	3
IN	540	527	528	513	12	14
IA	1,209	1,230	1,193	1,217	16	13
ME	81	77				
MD	62	47	60	45	2	2
MI	227	244				
MN	227	234	219	226	8	8
MS	128	116	37	33	91	83
MO	154	168				
NE	235	236	235	236	0	0
NY	99	100				
NC	258	263	122	133	136	130
OH	601	603				
OR	67	62	65	60	2	2
PA	519	550	499	530	20	20
SC	97	96	75	73	22	23
SD	57	62	57	62	0	0
TX	404	399				
VA	62	64	30	28	32	36
WA	126	141				
WI	103	112				
Oth Sts ³	516	510	371	374	145	136
US ¹	7,551	7,590	6,436	6,514	1,115	1,076

¹ Totals may not add due to rounding.

² Data by type of flock not shown for some States to avoid disclosing individual operations, data included in US totals.

³ Not published separately to avoid disclosing data for individual operations.

**Forced Molt: Percent of All Layers by Month,
United States, 2008-09**

Month	Percent Being Molted ¹		Percent with Molt Completed ¹	
	2008	2009	2008	2009
	<i>Percent</i>	<i>Percent</i>	<i>Percent</i>	<i>Percent</i>
Jan	3.0	3.2	22.7	21.2
Feb	3.9	3.4	21.7	21.4
Mar	2.4	3.4	22.1	21.4
Apr	2.8	1.9	21.3	21.7
May	4.1	4.5	20.8	20.5
Jun	3.7	3.4	20.9	21.3
Jul	3.4	3.4	20.8	20.6
Aug ²	3.9	2.7	21.2	21.1
Sep	3.9	2.9	20.8	21.1
Oct	3.7		21.9	
Nov	2.1		22.7	
Dec	1.9		22.1	

¹ As of first of month.

² Revised 2009 only.

**Forced Molt: Percent of All Layers by State
and United States, September 1, 2008-09**

State	Percent Being Molted ¹		Percent with Molt Completed ¹	
	2008	2009	2008	2009
	<i>Percent</i>	<i>Percent</i>	<i>Percent</i>	<i>Percent</i>
AL	0.5	1.0	5.0	7.0
AR	0.5	1.0	10.5	9.0
CA	5.5	1.5	29.5	30.5
CO	6.5	1.5	20.0	14.5
CT	7.5	0.0	18.0	6.5
FL	6.5	8.0	29.0	27.0
GA	3.0	3.0	10.0	14.0
HI	9.0	10.0	53.0	50.0
IL	9.0	5.5	23.5	31.5
IN	4.5	3.5	34.0	32.0
IA	6.0	2.5	32.5	33.0
ME	0.0	0.0	0.0	0.0
MD	8.0	0.0	13.0	14.5
MI	5.0	1.5	22.5	18.0
MN	3.0	4.0	25.0	26.5
MS	2.0	2.0	9.0	11.0
MO	0.0	5.5	12.5	14.5
NE	1.0	0.0	3.5	2.0
NY	0.0	2.0	6.5	9.5
NC	2.5	0.0	9.0	9.0
OH	4.0	5.0	17.0	18.5
OR	7.0	5.5	26.0	27.5
PA	4.0	2.5	12.0	13.0
SC	0.0	1.0	21.5	23.0
SD	11.0	6.5	28.5	24.0
TX	3.0	3.0	23.5	20.0
VA	3.5	6.5	13.5	11.0
WA	4.0	6.0	25.5	34.0
WI	5.5	5.5	22.0	29.5
Oth Sts ²	1.8	3.0	20.7	19.0
US	3.9	2.9	20.8	21.1

¹ As of first of month.

² Not published separately to avoid disclosing data for individual operations.

**Hatchery Production: Eggs in Incubators, Chicks Hatched,
and Placements by Type, United States, August-September 2008-09**

Item	2008	2009	2009 as % of 2008
	<i>1,000</i>	<i>1,000</i>	<i>Percent</i>
Egg-Type			
Eggs in Incubators on Sep 1	36,422	36,523	100
Chicks Hatched During Aug	35,578	37,160	104
Chicks Hatched Jan thru Aug	318,655	310,371	97
Pullets Hatched During Aug for Intended Placements in Hatchery Supply Flocks	279	291	104
7-18 Months Earlier ¹	2,915	3,000	103
Broiler-Type			
Eggs in Incubators on Sep 1	637,383	617,774	97
Chicks Hatched During Aug	799,059	777,996	97
Chicks Hatched Jan thru Aug	6,475,102	6,135,176	95
Pullets Hatched During Aug for Intended Placements in Hatchery Supply Flocks	7,697	7,128	93
7-15 Months Earlier ²	66,490	64,206	97

¹ 2009 includes pullet chicks hatched Feb 2008 through Jan 2009.

² 2009 includes pullet chicks hatched May 2008 through Jan 2009.

**Egg-Type Eggs in Incubators: By Region and United States,
September 1, 2008-09**

Region	2008	2009	2009 as % of 2008
	<i>1,000</i>	<i>1,000</i>	<i>Percent</i>
North Atlantic	5,694	5,235	92
E North Central	7,019	7,527	107
W North Central	9,021	8,040	89
South Atlantic	3,720	4,299	116
South Central	6,465	5,479	85
West	4,503	5,943	132
US	36,422	36,523	100

Egg-Type Chicks Hatched: By Month, United States, 2008-09

Month	By Months			Cumulative		
	2008	2009	2009 as % of 2008	2008	2009	2009 as % of 2008
	<i>1,000</i>	<i>1,000</i>	<i>Percent</i>	<i>1,000</i>	<i>1,000</i>	<i>Percent</i>
Jan	40,256	38,083	95	40,256	38,083	95
Feb	38,534	36,861	96	78,790	74,944	95
Mar	41,954	40,137	96	120,744	115,081	95
Apr	42,329	40,621	96	163,073	155,702	95
May	41,826	37,774	90	204,899	193,476	94
Jun	40,928	43,453	106	245,827	236,929	96
Jul	37,250	36,282	97	283,077	273,211	97
Aug	35,578	37,160	104	318,655	310,371	97
Sep	37,111			355,766		
Oct	40,198			395,964		
Nov	34,187			430,151		
Dec	37,091			467,242		

**Intended Placements: Egg-Type Pullet Chicks for Hatchery Supply
Flocks by Month and Total, United States, 2008-09**

Month	Pullet Chicks Hatched		2009 as % of 2008	Cumulative Potential Plcmts Relative to Current Supply Flocks 7-18 Months Earlier ¹	
	2008	2009		2009	2010
	<i>1,000</i>	<i>1,000</i>	<i>Percent</i>	<i>1,000</i>	<i>1,000</i>
Jan	198	240	121	2,907	3,198
Feb	271	256	94	2,968	3,296
Mar	245	277	113	2,969	3,308
Apr	264	307	116	2,879	
May	227	275	121	2,968	
Jun	231	321	139	3,004	
Jul	244	342	140	2,958	
Aug	279	291	104	3,000	
Sep	210			2,985	
Oct	273			3,017	
Nov	317			3,060	
Dec	199			3,108	
Total	2,958				

¹ For August 2009, includes breeder pullet chicks hatched Feb 2008 through Jan 2009. The 7-18 months represent the first laying cycle. Molting and additional laying cycles will increase the cumulative potential placements.

**Broiler-Type Eggs in Incubators: By Region
and United States, September 1, 2008-09**

Region	2008	2009	2009 as % of 2008
	<i>1,000</i>	<i>1,000</i>	<i>Percent</i>
North Atlantic	12,299	11,592	94
E North Central	11,881	11,351	96
W North Central	28,634	28,836	101
South Atlantic	237,492	230,732	97
South Central	325,524	313,869	96
West	21,553	21,394	99
US	637,383	617,774	97

**Broiler-Type Chicks Hatched: By State
and United States, August 2008-09**

State	During August			Jan-Aug		
	2008	2009	2009 as % of 2008	2008	2009	2009 as % of 2008
	<i>1,000</i>	<i>1,000</i>	<i>Percent</i>	<i>1,000</i>	<i>1,000</i>	<i>Percent</i>
AL	113,521	107,711	95	932,374	864,653	93
AR	93,120	86,673	93	792,702	699,359	88
DE	13,546	13,124	97	111,662	102,545	92
FL	4,851	3,638	75	39,777	29,115	73
GA	122,197	115,649	95	988,498	926,476	94
KY	29,067	28,825	99	225,776	223,237	99
LA	13,431	12,869	96	110,091	89,514	81
MD	32,843	33,073	101	259,034	257,522	99
MS	70,073	69,836	100	555,419	531,272	96
NC	69,911	69,138	99	564,461	543,997	96
OK	24,717	25,298	102	202,059	197,779	98
PA	15,600	14,445	93	122,640	110,617	90
SC	19,703	20,712	105	157,078	159,237	101
TX	56,239	58,036	103	452,756	454,644	100
VA	23,154	23,201	100	181,795	178,245	98
CA, MO, TN, & WV	71,409	70,091	98	577,326	567,529	98
19 Sts ¹	773,382	752,319	97	6,273,448	5,935,741	95
Oth Sts ²	25,677	25,677	100	201,654	199,435	99
US	799,059	777,996	97	6,475,102	6,135,176	95

¹ States in the weekly hatchery production estimating program.

² Not published separately to avoid disclosing data for individual operations.

Broiler-Type Chicks Hatched: By Month, United States, 2008-09

Month	By Months			Cumulative		
	2008	2009	2009 as % of 2008	2008	2009	2009 as % of 2008
	<i>1,000</i>	<i>1,000</i>	<i>Percent</i>	<i>1,000</i>	<i>1,000</i>	<i>Percent</i>
Jan	826,027	778,401	94	826,027	778,401	94
Feb	775,280	700,913	90	1,601,307	1,479,314	92
Mar	836,890	783,348	94	2,438,197	2,262,662	93
Apr	801,548	755,862	94	3,239,745	3,018,524	93
May	825,323	786,471	95	4,065,068	3,804,995	94
Jun	805,793	770,970	96	4,870,861	4,575,965	94
Jul	805,182	781,215	97	5,676,043	5,357,180	94
Aug	799,059	777,996	97	6,475,102	6,135,176	95
Sep	755,235			7,230,337		
Oct	740,964			7,971,301		
Nov	705,312			8,676,613		
Dec	779,304			9,455,917		

**Intended Placements: Broiler-Type Pullet Chicks for Hatchery
Supply Flocks by Month and Total, 2008-09**

Month	Pullet Chicks Hatched		2009 as % of 2008	Cumulative Potential Plcmts Relative to Current Supply Flocks 7-15 Months Earlier ¹	
	2008	2009		2009	2010
	<i>1,000</i>	<i>1,000</i>	<i>Percent</i>	<i>1,000</i>	<i>1,000</i>
US Place- ments					
Jan	7,012	7,142	102	65,952	62,645
Feb	7,536	7,215	96	65,444	61,817
Mar	7,090	6,773	96	65,535	61,919
Apr	7,119	6,158	87	65,173	
May	8,217	7,552	92	65,203	
Jun	7,154	7,157	100	64,693	
Jul	6,462	6,214	96	64,183	
Aug	7,697	7,128	93	64,206	
Sep	6,886			63,204	
Oct	7,042			62,823	
Nov	7,026			62,519	
Dec	6,580			62,374	
Annual Total	85,821				
Total Place- ments ²					
Jan	8,706	8,410	97		
Feb	9,498	8,524	90		
Mar	9,245	8,626	93		
Apr	8,720	7,664	88		
May	10,089	9,255	92		
Jun	9,228	8,830	96		
Jul	8,017	7,469	93		
Aug	9,603	8,813	92		
Sep	8,651				
Oct	8,361				
Nov	8,704				
Dec	8,197				
Annual Total	107,019				

¹ For Aug 2009, includes breeder pullet chicks hatched May 2008 through Jan 2009.

² U.S. production of intended placements worldwide.

Reliability of Chickens and Eggs Estimates

Survey Procedures: Primary data for the "**Chickens and Eggs**" report are from weekly and/or monthly questionnaires sent to producers. An attempt is made to collect information for layer and egg estimates from each known contractor and independent producer who has at least 30,000 table egg layers, flocks of hatchery supply layers, or pullet only operations with at least 500 pullets. Coverage for operations with less than 30,000 table egg layers are estimated each month based on data reported in December. Approximately 650 contractors, independent egg producers, and pullet only operations are contacted each month. All known hatcheries, approximately 300, are contacted for information on a weekly and/or monthly basis.

Estimating Procedures: Sound statistical methodology is employed to derive estimates from the reported data. All data are analyzed for unusual values. Data from each operation are compared to their own past operating profile and to trends from similar operations. Data for missing operations are estimated based on similar operations or historical data. NASS field offices prepare these estimates by using a combination of survey indications and historic trends. Individual State estimates are reviewed by the Agricultural Statistics Board for reasonableness. Individual hatchery data are summed to State, regional, and U.S. totals.

For chicken hatcheries, chicks hatched consist of all chicks of domesticated breeds including males and chicks destined for hatchery supply flocks and research purposes. Eggs set are eggs in incubators for the purpose of hatching. The relationship of egg-type chicks hatched to chicken inventory and poultry marketings are carefully monitored. The disposition of egg-type chicks hatched prior to placement into the laying flock can vary significantly, which can make comparisons to changes in layer inventory inconsistent over time. Broiler chicks placed are specifically placed on feed for meat production. Intended placement data reported by leading breeders include pullet chicks expected from eggs sold the preceding month. The breeders in this report account for a large percentage of replacement pullets for hatchery supply flocks. Production of replacement pullets by these breeders indicates the number of pullets available to hatchery supply layer flocks several months before the pullets will actually move into the laying flocks. "Hatchery Supply Flocks" include all generations of layers which could lay eggs to supply a hatchery. This includes the generations of parents, grandparents, great-grandparents, pedigree, etc. Also included are research flocks, vaccine flocks, and specific pathogen-free flocks. The broiler cumulative potential placements are a moving total of the intended placements 7-15 months earlier. The egg-type cumulative potential placements of 7-18 months earlier represent the first laying cycle. Molting and additional laying cycles will increase the cumulative potential placements of egg-type hatching flocks.

Revision Policy: The previous month's estimates are subject to revision if late reports or corrected data indicates a different level. Additionally, revisions after the monthly report will be made at the end of the marketing year and published in the annual reports of "**Chickens and Eggs Summary**" and "**Hatchery Production**".

Reliability: Estimates are based on a census of all known contractors and independent producers who have at least 30,000 table egg layers, flocks of hatchery supply layers, pullet only operations with at least 500 pullets, or operating hatcheries and therefore, have no sampling error. However, estimates are subject to errors such as omission, duplication, and mistakes in reporting, recording, and processing the data. While these errors cannot be measured directly, they are minimized through strict quality controls in the data collection process and a careful review of all reported data for consistency and reasonableness.

To assist in evaluating the reliability of the estimates in this report, the "Root Mean Square Error" is shown for selected items in the following table. The "Root Mean Square Error" is a statistical measure based on past performance and is computed using the differences between first and final estimates. The "Root Mean Square Error" for all layers over the past 24 months is 0.4 percent. This means that chances are 2 out of 3 that the final estimate will not be above or below the current estimate of 332 million layers by more than 0.4 percent. Chances are 9 out of 10 that the difference will not exceed 0.7 percent.

Reliability of Layer and Egg Estimates

Item	Root Mean Square Error	90 Percent Confidence Level		Difference Between First and Latest Estimates			Number of Months	
				Average	Smallest	Largest	First Above Latest	First Below Latest
All Layers	<i>Percent</i> 0.4	<i>Percent</i> 0.7	<i>1,000</i> 24	<i>1,000</i> 832	<i>1,000</i> 4	<i>1,000</i> 3,947	<i>Number</i> 11	<i>Number</i> 13
Eggs	0.4	0.7	<i>Million Eggs</i> 1	<i>Million Eggs</i> 19	<i>Million Eggs</i> 0	<i>Million Eggs</i> 75	10	11

Regional Listing

North Atlantic: CT, ME, MA, NH, NJ, NY, PA, RI, VT.

East North Central: IL, IN, MI, OH, WI.

West North Central: IA, KS, MN, MO, NE, ND, SD.

South Atlantic: DE, FL, GA, MD, NC, SC, VA, WV.

South Central: AL, AR, KY, LA, MS, OK, TN, TX.

West: AK, AZ, CA, CO, HI, ID, MT, NM, NV, OR, UT, WA, WY.

Terms and Definitions of Chickens and Eggs Estimates

All Layers includes both table egg and hatching egg flocks regardless of size.

Intended Placements are reported by leading breeders. Coverage may not be 100 percent. Includes expected pullet chicks from eggs sold during the preceding month at the rate of 125 pullet chicks per case of 30 dozen eggs.

Information Contacts

Listed below are the commodity specialists in the Livestock Branch of the National Agricultural Statistics Service to contact for additional information.

- Dan Kerestes, Chief, Livestock Branch(202) 720-3570
- Bruce Boess, Head, Poultry and Specialty Commodities Section.....(202) 720-4447
- David Colwell - Cold Storage(202) 720-8784
- Chris Hawthorn - Catfish Processing, Catfish Production, Trout Production,
Census of Aquaculture, Egg Products, Mink(202) 720-0585
- Kim Linonis - Layers, Eggs(202) 690-8632
- Troy Marshall - Poultry Slaughter, Turkey Hatchery, Turkeys Raised,
Broiler Hatchery, Chicken Hatchery, Honey.....(202) 690-3237

ACCESS TO REPORTS!!

For your convenience, there are several ways to obtain NASS reports, data products, and services:

INTERNET ACCESS

All NASS reports are available free of charge. For free access, connect to the Internet and go to the NASS Home Page at: www.nass.usda.gov.

E-MAIL SUBSCRIPTION

All NASS reports are available by subscription free of charge direct to your e-mail address. Starting with the NASS Home Page at www.nass.usda.gov, under the right navigation, *Receive reports by Email*, click on **National** or **State**. Follow the instructions on the screen.

PRINTED REPORTS OR DATA PRODUCTS

CALL OUR TOLL-FREE ORDER DESK: 800-999-6779 (U.S. and Canada)
Other areas, please call 703-605-6220 FAX: 703-605-6900
(Visa, MasterCard, check, or money order acceptable for payment.)

ASSISTANCE

For **assistance** with general agricultural statistics or further information about NASS or its products or services, contact the **Agricultural Statistics Hotline** at **800-727-9540**, 7:30 a.m. to 4:00 p.m. ET, or e-mail: nass@nass.usda.gov.

The U.S. Department of Agriculture (USDA) prohibits discrimination in all its programs and activities on the basis of race, color, national origin, age, disability, and where applicable, sex, marital status, familial status, parental status, religion, sexual orientation, genetic information, political beliefs, reprisal, or because all or a part of an individual's income is derived from any public assistance program. (Not all prohibited bases apply to all programs.) Persons with disabilities who require alternative means for communication of program information (Braille, large print, audiotape, etc.) should contact USDA's TARGET Center at (202) 720-2600 (voice and TDD).

To file a complaint of discrimination, write to USDA, Director, Office of Civil Rights, 1400 Independence Avenue, S.W., Washington, D.C. 20250-9410, or call (800) 795-3272 (voice) or (202) 720-6382 (TDD). USDA is an equal opportunity provider and employer.