

Chickens and Eggs

Released October 23, 2009, by the National Agricultural Statistics Service (NASS), Agricultural Statistics Board, U.S. Department of Agriculture. For information on "Layers and Eggs" call Kim Linonis at (202) 690-8632, for "Chicks Hatched" call Troy Marshall at (202) 720-3244, office hours 7:30 a.m. to 4:00 p.m. ET.

September Egg Production Up Slightly

U.S. egg production totaled 7.37 billion during September 2009, up slightly from last year. Production included 6.34 billion table eggs, and 1.03 billion hatching eggs, of which 961 million were broiler-type and 69 million were egg-type. The total number of layers during September 2009 averaged 334 million, down slightly from last year. September egg production per 100 layers was 2,209 eggs, up 1 percent from September 2008.

All layers in the U.S. on October 1, 2009 totaled 335 million, up slightly from last year. The 335 million layers consisted of 279 million layers producing table or market type eggs, 52.4 million layers producing broiler-type hatching eggs, and 2.88 million layers producing egg-type hatching eggs. Rate of lay per day on October 1, 2009, averaged 73.4 eggs per 100 layers, unchanged from October 1, 2008.

Egg-Type Chicks Hatched Up 8 Percent

Egg-type chicks hatched during September 2009 totaled 40.0 million, up 8 percent from September 2008. Eggs in incubators totaled 36.2 million on October 1, 2009, down slightly from a year ago.

Domestic placements of egg-type pullet chicks for future hatchery supply flocks by leading breeders totaled 212 thousand during September 2009, up 1 percent from September 2008.

Broiler-Type Chicks Hatched Down 2 Percent

Broiler-type chicks hatched during September 2009 totaled 739 million, down 2 percent from September 2008. Eggs in incubators totaled 586 million on October 1, 2009, down 3 percent from a year earlier.

Leading breeders placed 6.72 million broiler-type pullet chicks for future domestic hatchery supply flocks during September 2009, down 2 percent from September 2008.

Contents

Page

U.S. Average Number of Layers on Hand and Egg Production.....	1
U.S. Layers on Hand and Eggs Produced by Type, Forced Molt, and Pullets.....	3
Layers on Hand and Eggs Produced by State.....	5
Egg Production by Type and State.....	7
Forced Molt.....	9
U.S. Hatchery Production Summary.....	10
Egg-Type Hatchery.....	11
Egg-Type Intended Placements.....	12
Broiler-Type Hatchery.....	12
Broiler-Type Intended Placements.....	14
Reliability of Chickens and Eggs Estimates.....	15
Regional Listing.....	16
Terms and Definitions of Chickens and Eggs Estimates.....	16
Information Contacts.....	16

**All Layers: Average Number on Hand During the Month,
United States, 2008-09**

Month	2008	2009
	<i>1,000 Layers</i>	<i>1,000 Layers</i>
Dec ¹	346,225	340,302
Jan	344,737	340,936
Feb	343,299	340,614
Mar	342,017	340,455
Apr	340,838	339,745
May	340,116	336,695
Jun	338,664	333,388
Jul	336,276	332,143
Aug ²	335,265	332,291
Sep	334,489	333,613
Oct	334,937	
Nov	337,995	

¹ December preceding year.

² Revised 2009 only.

**Eggs: Production During the Month by Type,
United States, 2008-09**

Month	Total Eggs ¹		Table Eggs		Hatching Eggs	
	2008	2009	2008	2009	2008	2009
	<i>Million Eggs</i>	<i>Million Eggs</i>	<i>Million Eggs</i>	<i>Million Eggs</i>	<i>Million Eggs</i>	<i>Million Eggs</i>
Dec ²	7,808	7,768	6,666	6,701	1,143	1,068
Jan	7,646	7,666	6,498	6,591	1,149	1,075
Feb	7,114	6,892	6,034	5,906	1,080	985
Mar	7,675	7,724	6,517	6,632	1,159	1,093
Apr	7,373	7,461	6,256	6,408	1,117	1,053
May	7,564	7,597	6,409	6,505	1,155	1,092
Jun	7,367	7,347	6,262	6,291	1,104	1,056
Jul	7,599	7,575	6,474	6,494	1,125	1,081
Aug ³	7,551	7,589	6,436	6,514	1,115	1,075
Sep	7,339	7,371	6,272	6,341	1,067	1,030
Oct	7,625		6,538		1,088	
Nov	7,490		6,446		1,044	
During Year ¹	90,151		76,811		13,346	

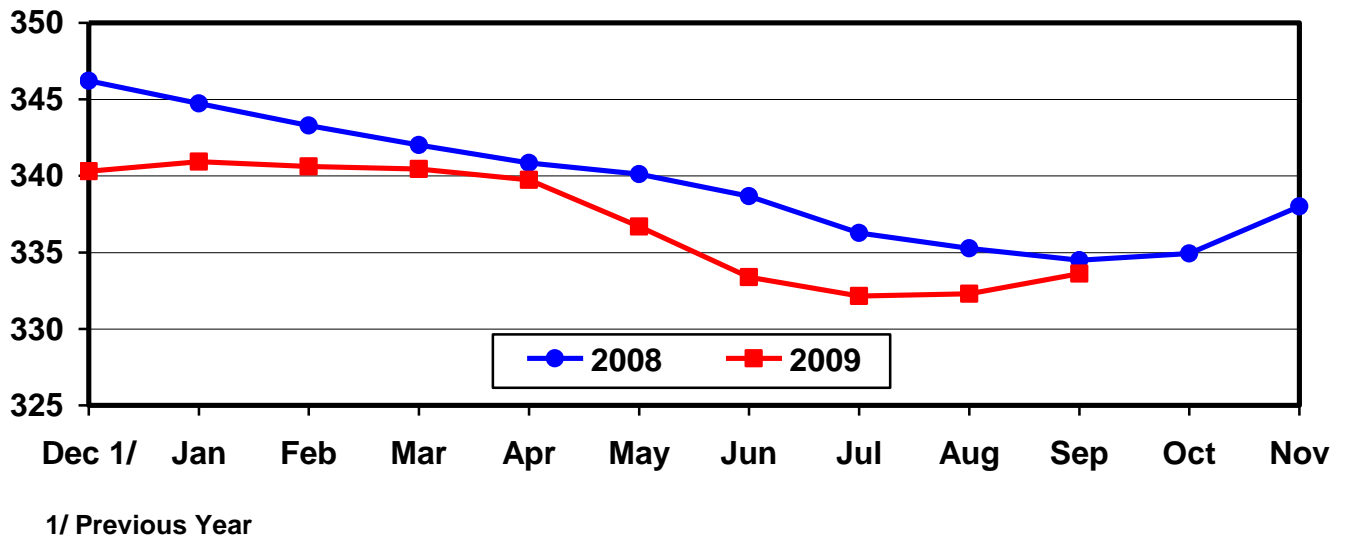
¹ Totals may not add due to rounding.

² December preceding year.

³ Revised 2009 only.

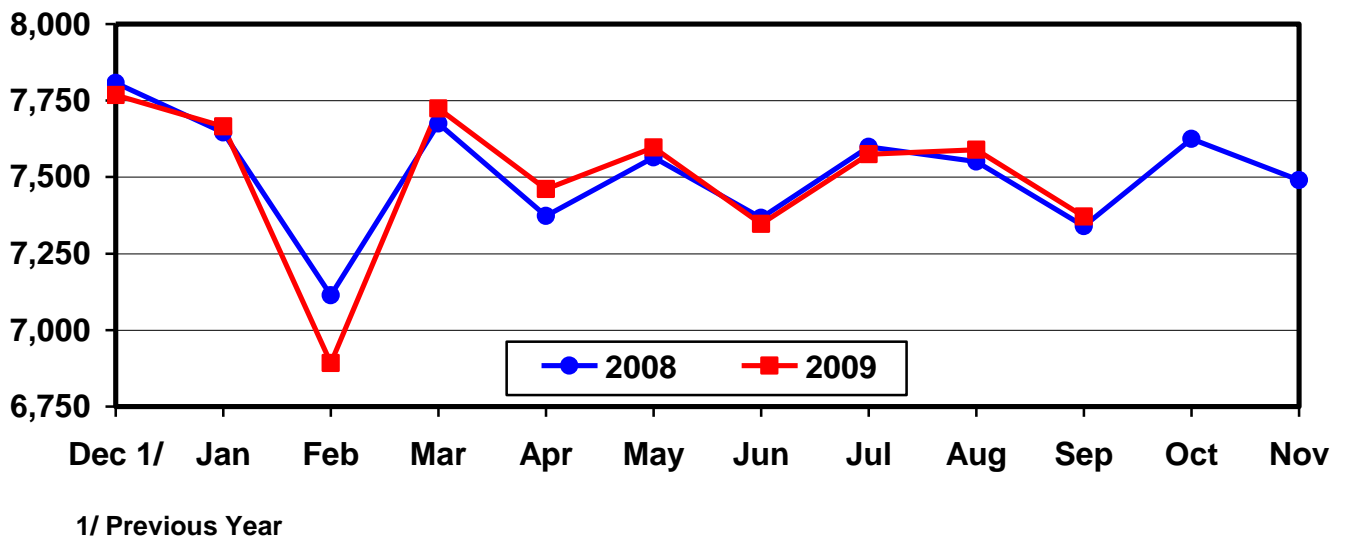
U.S. Average Number of Layers During the Month

Million Layers



U.S. All Egg Production During the Month

Million Eggs



**Layers and Eggs: Layers on Hand and Eggs Produced by Type,
and Forced Molt, United States, August-September 2008-09**

Item	Unit	2008	2009 ¹	2009 as % of 2008
Layers During Aug ²	1,000			
All Layers		335,265	332,291	99
Table Egg Type		277,191	276,580	100
Hatching Egg Type		58,074	55,711	96
Broiler-Type Hatching		55,328	52,796	95
Egg-Type Hatching		2,746	2,915	106
Eggs per 100 Layers During Aug	Number			
All Layers		2,252	2,284	101
Table Egg Type		2,322	2,355	101
Hatching Egg Type		1,920	1,930	101
Broiler-Type Hatching		1,896	1,900	100
Egg-Type Hatching		2,403	2,470	103
Eggs Produced During Aug ²	Million			
All Layers		7,551	7,589	101
Table Egg Type		6,436	6,514	101
Hatching Egg Type		1,115	1,075	96
Broiler-Type Hatching		1,049	1,003	96
Egg-Type Hatching		66	72	109
Layers on Sep 1 ²	1,000			
All Layers		335,396	332,524	99
Table Egg Type		277,695	276,872	100
Hatching Egg Type		57,701	55,652	96
Broiler-Type Hatching		54,938	52,715	96
Egg-Type Hatching		2,763	2,937	106
Eggs per 100 Layers on Sep 1	Number			
All Layers		72.8	73.8	101
Table Egg Type		75.0	76.1	101
Hatching Egg Type		62.4	62.0	99
Broiler-Type Hatching		61.6	61.1	99
Egg-Type Hatching		77.9	78.7	101
Forced Molt Layers on Sep 1	Percent			
Percent Being Molted		3.9	2.9	74
Percent with Molt Completed		20.8	21.0	101
Layers Sold for Slaughter During Aug	1,000	14,242	13,844	97
Layers Rendered, Died, Destroyed, Composted or Disappeared For Any Reason During Aug	1,000	6,600	7,058	107
Pullets on Sep 1	1,000	102,657	100,696	98
Pullets Added During Aug ³	1,000	22,479	23,015	102

¹ Revised.

² Totals may not add due to rounding.

³ Pullet chicks less than 3 days old added to pullet flocks.

**Layers and Eggs: Layers on Hand and Eggs Produced by Type,
and Forced Molt, United States, September-October 2008-09**

Item	Unit	2008	2009	2009 as % of 2008
Layers During Sep ¹	1,000			
All Layers		334,489	333,613	100
Table Egg Type		277,308	278,160	100
Hatching Egg Type		57,181	55,453	97
Broiler-Type Hatching		54,334	52,540	97
Egg-Type Hatching		2,847	2,913	102
Eggs per 100 Layers During Sep	Number			
All Layers		2,194	2,209	101
Table Egg Type		2,262	2,280	101
Hatching Egg Type		1,866	1,857	100
Broiler-Type Hatching		1,842	1,829	99
Egg-Type Hatching		2,318	2,369	102
Eggs Produced During Sep ¹	Million			
All Layers		7,339	7,371	100
Table Egg Type		6,272	6,341	101
Hatching Egg Type		1,067	1,030	97
Broiler-Type Hatching		1,001	961	96
Egg-Type Hatching		66	69	105
Layers on Oct 1 ¹	1,000			
All Layers		333,534	334,657	100
Table Egg Type		276,897	279,425	101
Hatching Egg Type		56,637	55,232	98
Broiler-Type Hatching		53,716	52,355	97
Egg-Type Hatching		2,921	2,877	98
Eggs per 100 Layers on Oct 1	Number			
All Layers		73.4	73.4	100
Table Egg Type		75.7	75.7	100
Hatching Egg Type		61.9	61.6	100
Broiler-Type Hatching		61.2	60.6	99
Egg-Type Hatching		76.0	78.7	104
Forced Molt Layers on Oct 1	Percent			
Percent Being Molted		3.7	3.4	92
Percent with Molt Completed		21.9	20.9	95
Layers Sold for Slaughter During Sep	1,000	13,943	13,937	100
Layers Rendered, Died, Destroyed, Composted or Disappeared For Any Reason During Sep	1,000	7,251	6,098	84
Pullets on Oct 1	1,000	102,126	101,648	100
Pullets Added During Sep ²	1,000	20,504	24,000	117

¹ Totals may not add due to rounding.

² Pullet chicks less than 3 days old added to pullet flocks.

**Layers and Eggs: Layers on Hand and Eggs Produced by State
and United States, During August 2008-09**

State	Table Egg Layers in Flocks 30,000 and Above		All Layers		Eggs per 100 for All Layers	
	2008	2009	2008	2009 ¹	2008	2009 ¹
	<i>1,000</i>	<i>1,000</i>	<i>1,000</i>	<i>1,000</i>	<i>Number</i>	<i>Number</i>
AL	1,389	1,227	9,363	9,006	1,922	1,954
AR	3,695	3,380	12,972	11,873	2,043	2,080
CA	20,102	19,434	20,405	19,740	2,235	2,310
CO	3,282	3,184	3,793	3,645	2,505	2,524
CT	2,862	2,611	2,926	2,670	2,256	2,472
FL	9,530	9,373	9,927	9,705	2,196	2,267
GA	9,141	8,611	18,016	17,210	2,065	2,162
HI	308	299	329	326	1,854	1,810
IL	5,172	4,597	5,394	4,804	2,243	2,373
IN	22,886	22,314	23,560	23,087	2,292	2,283
IA	52,312	52,779	53,251	53,643	2,270	2,293
ME	3,691	3,329	3,763	3,417	2,153	2,253
MD	2,421	1,892	2,559	2,021	2,423	2,326
MI	9,069	9,545	9,230	9,695	2,459	2,517
MN	9,276	9,656	9,737	10,147	2,331	2,306
MS	1,463	1,312	6,168	5,565	2,075	2,084
MO	5,229	5,926	6,517	7,184	2,363	2,339
NE	9,599	9,595	9,649	9,645	2,435	2,447
NY	3,693	3,833	3,904	4,057	2,536	2,465
NC	4,861	5,523	12,263	12,578	2,104	2,091
OH	25,561	25,564	26,003	26,021	2,311	2,317
OR	2,503	2,258	2,658	2,393	2,521	2,591
PA	20,542	21,415	21,665	22,490	2,396	2,446
SC	3,025	3,164	4,298	4,516	2,257	2,126
SD	2,449	2,406	2,509	2,446	2,272	2,535
TX	13,580	12,901	18,175	17,438	2,223	2,288
VA	1,211	1,272	2,979	3,148	2,081	2,033
WA	5,435	6,001	5,497	6,116	2,292	2,305
WI	3,988	4,249	4,396	4,837	2,343	2,315
Oth Sts ²	14,726	14,459	23,359	22,868	2,209	2,226
US	273,001	272,109	335,265	332,291	2,252	2,284

¹ Revised.

² Not published separately to avoid disclosing data for individual operations.

**Layers and Eggs: Layers on Hand and Eggs Produced by State
and United States, During September 2008-09**

State	Table Egg Layers in Flocks 30,000 and Above		All Layers		Eggs per 100 for All Layers	
	2008	2009	2008	2009	2008	2009
	<i>1,000</i>	<i>1,000</i>	<i>1,000</i>	<i>1,000</i>	<i>Number</i>	<i>Number</i>
AL	1,398	1,261	9,334	9,227	1,886	1,897
AR	3,727	3,440	12,835	11,818	2,018	2,014
CA	19,908	19,249	20,212	19,551	2,177	2,235
CO	3,155	3,113	3,667	3,575	2,400	2,406
CT	2,866	2,580	2,927	2,639	2,187	2,387
FL	9,563	9,377	9,930	9,700	2,105	2,258
GA	9,278	8,535	17,959	17,176	2,005	2,119
HI	309	290	330	315	1,758	1,778
IL	5,183	4,705	5,395	4,914	2,187	2,218
IN	23,093	22,249	23,791	23,000	2,215	2,261
IA	52,270	52,990	53,214	53,901	2,208	2,215
ME	3,602	3,395	3,678	3,487	2,202	2,208
MD	2,262	1,984	2,396	2,111	2,295	2,037
MI	9,034	9,872	9,191	10,022	2,405	2,325
MN	9,271	9,772	9,726	10,242	2,313	2,255
MS	1,466	1,350	6,171	5,507	1,993	2,016
MO	5,318	5,925	6,619	7,130	2,312	2,188
NE	9,697	9,566	9,747	9,616	2,421	2,340
NY	3,787	3,786	3,997	4,006	2,452	2,371
NC	4,840	5,587	12,020	12,617	2,013	1,997
OH	25,424	26,067	25,871	26,538	2,277	2,284
OR	2,406	2,246	2,561	2,381	2,421	2,478
PA	20,449	21,564	21,556	22,641	2,347	2,372
SC	3,051	3,246	4,343	4,643	2,049	2,089
SD	2,466	2,355	2,526	2,395	2,296	2,505
TX	13,853	13,048	18,412	17,437	2,167	2,214
VA	1,206	1,291	2,929	3,150	1,980	2,000
WA	5,580	6,057	5,641	6,172	2,269	2,236
WI	3,979	4,278	4,382	4,874	2,214	2,257
Oth Sts ¹	14,677	14,513	23,129	22,828	2,149	2,107
US	273,118	273,691	334,489	333,613	2,194	2,209

¹ Not published separately to avoid disclosing data for individual operations.

**Egg Production: By Type, State, and United States,
August 2008-09**

State	Total Production ¹		Table Eggs ²		Hatching Eggs ²	
	2008	2009 ³	2008	2009	2008	2009 /3
	<i>Million Eggs</i>	<i>Million Eggs</i>	<i>Million Eggs</i>	<i>Million Eggs</i>	<i>Million Eggs</i>	<i>Million Eggs</i>
AL	180	176	33	30	147	146
AR	265	247	90	86	175	161
CA	456	456				
CO	95	92				
CT	66	66				
FL	218	220	211	216	7	4
GA	372	372	201	202	171	170
HI	6.1	5.9	6.1	5.9	0	0
IL	121	114	118	111	3	3
IN	540	527	528	513	12	14
IA	1,209	1,230	1,193	1,217	16	13
ME	81	77				
MD	62	47	60	45	2	2
MI	227	244				
MN	227	234	219	226	8	8
MS	128	116	37	33	91	83
MO	154	168				
NE	235	236	235	236	0	0
NY	99	100				
NC	258	263	122	133	136	130
OH	601	603				
OR	67	62	65	60	2	2
PA	519	550	499	530	20	20
SC	97	96	75	73	22	23
SD	57	62	57	62	0	0
TX	404	399				
VA	62	64	30	28	32	36
WA	126	141				
WI	103	112				
Oth Sts ⁴	516	509	371	374	145	135
US ¹	7,551	7,589	6,436	6,514	1,115	1,075

¹ Totals may not add due to rounding.

² Data by type of flock not shown for some States to avoid disclosing individual operations, data included in US totals.

³ Revised.

⁴ Not published separately to avoid disclosing data for individual operations.

**Egg Production: By Type, State, and United States,
September 2008-09**

State	Total Production ¹		Table Eggs ²		Hatching Eggs ²	
	2008	2009	2008	2009	2008	2009
	<i>Million Eggs</i>	<i>Million Eggs</i>	<i>Million Eggs</i>	<i>Million Eggs</i>	<i>Million Eggs</i>	<i>Million Eggs</i>
AL	176	175	33	30	143	145
AR	259	238	92	84	167	154
CA	440	437				
CO	88	86				
CT	64	63				
FL	209	219	203	215	6	4
GA	360	364	198	197	162	167
HI	5.8	5.6	5.8	5.6	0	0
IL	118	109	115	106	3	3
IN	527	520	515	506	12	14
IA	1,175	1,194	1,159	1,181	16	13
ME	81	77				
MD	55	43	53	42	2	1
MI	221	233				
MN	225	231	217	223	8	8
MS	123	111	35	32	88	79
MO	153	156				
NE	236	225	236	225	0	0
NY	98	95				
NC	242	252	113	130	129	122
OH	589	606				
OR	62	59	60	57	2	2
PA	506	537	486	518	20	19
SC	89	97	68	74	21	23
SD	58	60	58	60	0	0
TX	399	386				
VA	58	63	28	29	30	34
WA	128	138				
WI	97	110				
Oth Sts ³	497	481	360	355	137	126
US ¹	7,339	7,371	6,272	6,341	1,067	1,030

¹ Totals may not add due to rounding.

² Data by type of flock not shown for some States to avoid disclosing individual operations, data included in US totals.

³ Not published separately to avoid disclosing data for individual operations.

**Forced Molt: Percent of All Layers by Month,
United States, 2008-09**

Month	Percent Being Molted ¹		Percent with Molt Completed ¹	
	2008	2009	2008	2009
	<i>Percent</i>	<i>Percent</i>	<i>Percent</i>	<i>Percent</i>
Jan	3.0	3.2	22.7	21.2
Feb	3.9	3.4	21.7	21.4
Mar	2.4	3.4	22.1	21.4
Apr	2.8	1.9	21.3	21.7
May	4.1	4.5	20.8	20.5
Jun	3.7	3.4	20.9	21.3
Jul	3.4	3.4	20.8	20.6
Aug	3.9	2.7	21.2	21.1
Sep	3.9	2.9	20.8	21.0
Oct	3.7	3.4	21.9	20.9
Nov	2.1		22.7	
Dec	1.9		22.1	

¹ As of first of month.

**Forced Molt: Percent of All Layers by State
and United States, October 1, 2008-09**

State	Percent Being Molted ¹		Percent with Molt Completed ¹	
	2008	2009	2008	2009
	<i>Percent</i>	<i>Percent</i>	<i>Percent</i>	<i>Percent</i>
AL	1.5	0.5	4.5	8.0
AR	1.0	4.5	11.5	11.5
CA	4.0	4.0	34.0	31.0
CO	2.5	5.5	19.0	12.5
CT	0.0	0.0	22.0	6.5
FL	6.5	4.5	32.0	33.0
GA	2.5	3.0	12.0	13.5
HI	15.0	10.0	58.0	54.0
IL	11.0	4.0	22.5	32.5
IN	5.0	3.5	34.0	32.5
IA	5.0	3.5	35.0	30.5
ME	0.0	0.0	0.0	0.0
MD	2.5	4.5	12.0	7.0
MI	3.5	3.5	21.5	17.5
MN	2.5	3.5	23.5	28.5
MS	2.0	2.0	10.5	10.5
MO	1.5	1.5	8.5	18.0
NE	0.0	2.0	4.5	2.0
NY	1.0	0.0	5.0	7.5
NC	0.0	2.0	12.0	8.0
OH	5.0	3.5	17.0	19.5
OR	5.5	5.0	32.0	32.0
PA	3.0	2.0	11.0	13.5
SC	4.0	0.0	19.5	22.0
SD	10.0	6.5	28.5	21.0
TX	4.0	3.5	25.5	19.5
VA	6.5	2.0	13.5	17.0
WA	5.0	10.0	27.0	32.5
WI	6.0	8.5	24.5	24.5
Oth Sts ²	3.3	5.4	21.1	17.9
US	3.7	3.4	21.9	20.9

¹ As of first of month.

² Not published separately to avoid disclosing data for individual operations.

**Hatchery Production: Eggs in Incubators, Chicks Hatched,
and Placements by Type, United States, September-October 2008-09**

Item	2008	2009	2009 as % of 2008
	<i>1,000</i>	<i>1,000</i>	<i>Percent</i>
Egg-Type			
Eggs in Incubators on Oct 1	36,372	36,226	100
Chicks Hatched During Sep	37,111	40,001	108
Chicks Hatched Jan thru Sep	355,766	350,372	98
Pullets Hatched During Sep for Intended Placements in Hatchery Supply Flocks	210	212	101
7-18 Months Earlier ¹	3,021	2,985	99
Broiler-Type			
Eggs in Incubators on Oct 1	603,887	585,793	97
Chicks Hatched During Sep	755,235	739,477	98
Chicks Hatched Jan thru Sep	7,230,337	6,874,653	95
Pullets Hatched During Sep for Intended Placements in Hatchery Supply Flocks	6,886	6,719	98
7-15 Months Earlier ²	65,943	63,204	96

¹ 2009 includes pullet chicks hatched Mar 2008 through Feb 2009.

² 2009 includes pullet chicks hatched Jun 2008 through Feb 2009.

**Egg-Type Eggs in Incubators: By Region and United States,
October 1, 2008-09**

Region	2008	2009	2009 as % of 2008
	<i>1,000</i>	<i>1,000</i>	<i>Percent</i>
North Atlantic	5,995	5,782	96
E North Central	7,016	8,026	114
W North Central	9,271	7,944	86
South Atlantic	4,186	2,702	65
South Central	5,274	4,573	87
West	4,630	7,199	155
US	36,372	36,226	100

Egg-Type Chicks Hatched: By Month, United States, 2008-09

Month	By Months			Cumulative		
	2008	2009	2009 as % of 2008	2008	2009	2009 as % of 2008
	<i>1,000</i>	<i>1,000</i>	<i>Percent</i>	<i>1,000</i>	<i>1,000</i>	<i>Percent</i>
Jan	40,256	38,083	95	40,256	38,083	95
Feb	38,534	36,861	96	78,790	74,944	95
Mar	41,954	40,137	96	120,744	115,081	95
Apr	42,329	40,621	96	163,073	155,702	95
May	41,826	37,774	90	204,899	193,476	94
Jun	40,928	43,453	106	245,827	236,929	96
Jul	37,250	36,282	97	283,077	273,211	97
Aug	35,578	37,160	104	318,655	310,371	97
Sep	37,111	40,001	108	355,766	350,372	98
Oct	40,198			395,964		
Nov	34,187			430,151		
Dec	37,091			467,242		

**Intended Placements: Egg-Type Pullet Chicks for Hatchery Supply
Flocks by Month and Total, United States, 2008-09**

Month	Pullet Chicks Hatched		2009 as % of 2008	Cumulative Potential Plcmts Relative to Current Supply Flocks 7-18 Months Earlier ¹	
	2008	2009		2009	2010
	<i>1,000</i>	<i>1,000</i>	<i>Percent</i>	<i>1,000</i>	<i>1,000</i>
Jan	198	240	121	2,907	3,198
Feb	271	256	94	2,968	3,296
Mar	245	277	113	2,969	3,308
Apr	264	307	116	2,879	3,310
May	227	275	121	2,968	
Jun	231	321	139	3,004	
Jul	244	342	140	2,958	
Aug	279	291	104	3,000	
Sep	210	212	101	2,985	
Oct	273			3,017	
Nov	317			3,060	
Dec	199			3,108	
Total	2,958				

¹ For September 2009, includes breeder pullet chicks hatched Mar 2008 through Feb 2009. The 7-18 months represent the first laying cycle. Molting and additional laying cycles will increase the cumulative potential placements.

**Broiler-Type Eggs in Incubators: By Region
and United States, October 1, 2008-09**

Region	2008	2009	2009 as % of 2008
	<i>1,000</i>	<i>1,000</i>	<i>Percent</i>
North Atlantic	11,613	11,280	97
E North Central	11,299	11,140	99
W North Central	26,750	27,134	101
South Atlantic	223,738	218,358	98
South Central	309,128	297,025	96
West	21,359	20,856	98
US	603,887	585,793	97

**Broiler-Type Chicks Hatched: By State
and United States, September 2008-09**

State	During September			Jan-Sep		
	2008	2009	2009 as % of 2008	2008	2009	2009 as % of 2008
	<i>1,000</i>	<i>1,000</i>	<i>Percent</i>	<i>1,000</i>	<i>1,000</i>	<i>Percent</i>
AL	107,435	101,887	95	1,039,809	966,540	93
AR	89,103	83,144	93	881,805	782,503	89
DE	12,656	12,579	99	124,318	115,124	93
FL	4,627	3,279	71	44,404	32,394	73
GA	114,986	113,624	99	1,103,484	1,040,100	94
KY	27,318	27,228	100	253,094	250,465	99
LA	12,698	12,299	97	122,789	101,813	83
MD	30,293	31,147	103	289,327	288,669	100
MS	64,780	65,144	101	620,199	596,416	96
NC	66,690	65,257	98	631,151	609,254	97
OK	24,833	24,178	97	226,892	221,957	98
PA	14,297	13,590	95	136,937	124,207	91
SC	19,424	19,550	101	176,502	178,787	101
TX	54,664	54,216	99	507,420	508,860	100
VA	22,436	22,089	98	204,231	200,334	98
CA, MO, TN, & WV	66,514	66,650	100	643,840	634,179	98
19 Sts ¹	732,754	715,861	98	7,006,202	6,651,602	95
Oth Sts ²	22,481	23,616	105	224,135	223,051	100
US	755,235	739,477	98	7,230,337	6,874,653	95

¹ States in the weekly hatchery production estimating program.

² Not published separately to avoid disclosing data for individual operations.

Broiler-Type Chicks Hatched: By Month, United States, 2008-09

Month	By Months			Cumulative		
	2008	2009	2009 as % of 2008	2008	2009	2009 as % of 2008
	<i>1,000</i>	<i>1,000</i>	<i>Percent</i>	<i>1,000</i>	<i>1,000</i>	<i>Percent</i>
Jan	826,027	778,401	94	826,027	778,401	94
Feb	775,280	700,913	90	1,601,307	1,479,314	92
Mar	836,890	783,348	94	2,438,197	2,262,662	93
Apr	801,548	755,862	94	3,239,745	3,018,524	93
May	825,323	786,471	95	4,065,068	3,804,995	94
Jun	805,793	770,970	96	4,870,861	4,575,965	94
Jul	805,182	781,215	97	5,676,043	5,357,180	94
Aug	799,059	777,996	97	6,475,102	6,135,176	95
Sep	755,235	739,477	98	7,230,337	6,874,653	95
Oct	740,964			7,971,301		
Nov	705,312			8,676,613		
Dec	779,304			9,455,917		

**Intended Placements: Broiler-Type Pullet Chicks for Hatchery
Supply Flocks by Month and Total, 2008-09**

Month	Pullet Chicks Hatched		2009 as % of 2008	Cumulative Potential Plcmts Relative to Current Supply Flocks 7-15 Months Earlier ¹	
	2008	2009		2009	2010
	<i>1,000</i>	<i>1,000</i>	<i>Percent</i>	<i>1,000</i>	<i>1,000</i>
US Place- ments					
Jan	7,012	7,142	102	65,952	62,645
Feb	7,536	7,215	96	65,444	61,817
Mar	7,090	6,773	96	65,535	61,919
Apr	7,119	6,158	87	65,173	62,058
May	8,217	7,552	92	65,203	
Jun	7,154	7,157	100	64,693	
Jul	6,462	6,214	96	64,183	
Aug	7,697	7,128	93	64,206	
Sep	6,886	6,719	98	63,204	
Oct	7,042			62,823	
Nov	7,026			62,519	
Dec	6,580			62,374	
Annual Total	85,821				
Total Place- ments ²					
Jan	8,706	8,410	97		
Feb	9,498	8,524	90		
Mar	9,245	8,626	93		
Apr	8,720	7,664	88		
May	10,089	9,255	92		
Jun	9,228	8,830	96		
Jul	8,017	7,469	93		
Aug	9,603	8,813	92		
Sep	8,651	8,592	99		
Oct	8,361				
Nov	8,704				
Dec	8,197				
Annual Total	107,019				

¹ For Sep 2009, includes breeder pullet chicks hatched Jun 2008 through Feb 2009.

² U.S. production of intended placements worldwide.

Reliability of Chickens and Eggs Estimates

Survey Procedures: Primary data for the "**Chickens and Eggs**" report are from weekly and/or monthly questionnaires sent to producers. An attempt is made to collect information for layer and egg estimates from each known contractor and independent producer who has at least 30,000 table egg layers, flocks of hatchery supply layers, or pullet only operations with at least 500 pullets. Coverage for operations with less than 30,000 table egg layers are estimated each month based on data reported in December. Approximately 650 contractors, independent egg producers, and pullet only operations are contacted each month. All known hatcheries, approximately 300, are contacted for information on a weekly and/or monthly basis.

Estimating Procedures: Sound statistical methodology is employed to derive estimates from the reported data. All data are analyzed for unusual values. Data from each operation are compared to their own past operating profile and to trends from similar operations. Data for missing operations are estimated based on similar operations or historical data. NASS field offices prepare these estimates by using a combination of survey indications and historic trends. Individual State estimates are reviewed by the Agricultural Statistics Board for reasonableness. Individual hatchery data are summed to State, regional, and U.S. totals.

For chicken hatcheries, chicks hatched consist of all chicks of domesticated breeds including males and chicks destined for hatchery supply flocks and research purposes. Eggs set are eggs in incubators for the purpose of hatching. The relationship of egg-type chicks hatched to chicken inventory and poultry marketings are carefully monitored. The disposition of egg-type chicks hatched prior to placement into the laying flock can vary significantly, which can make comparisons to changes in layer inventory inconsistent over time. Broiler chicks placed are specifically placed on feed for meat production. Intended placement data reported by leading breeders include pullet chicks expected from eggs sold the preceding month. The breeders in this report account for a large percentage of replacement pullets for hatchery supply flocks. Production of replacement pullets by these breeders indicates the number of pullets available to hatchery supply layer flocks several months before the pullets will actually move into the laying flocks. "Hatchery Supply Flocks" include all generations of layers which could lay eggs to supply a hatchery. This includes the generations of parents, grandparents, great-grandparents, pedigree, etc. Also included are research flocks, vaccine flocks, and specific pathogen-free flocks. The broiler cumulative potential placements are a moving total of the intended placements 7-15 months earlier. The egg-type cumulative potential placements of 7-18 months earlier represent the first laying cycle. Molting and additional laying cycles will increase the cumulative potential placements of egg-type hatching flocks.

Revision Policy: The previous month's estimates are subject to revision if late reports or corrected data indicates a different level. Additionally, revisions after the monthly report will be made at the end of the marketing year and published in the annual reports of "**Chickens and Eggs Summary**" and "**Hatchery Production**".

Reliability: Estimates are based on a census of all known contractors and independent producers who have at least 30,000 table egg layers, flocks of hatchery supply layers, pullet only operations with at least 500 pullets, or operating hatcheries and therefore, have no sampling error. However, estimates are subject to errors such as omission, duplication, and mistakes in reporting, recording, and processing the data. While these errors cannot be measured directly, they are minimized through strict quality controls in the data collection process and a careful review of all reported data for consistency and reasonableness.

To assist in evaluating the reliability of the estimates in this report, the "Root Mean Square Error" is shown for selected items in the following table. The "Root Mean Square Error" is a statistical measure based on past performance and is computed using the differences between first and final estimates. The "Root Mean Square Error" for all layers over the past 24 months is 0.4 percent. This means that chances are 2 out of 3 that the final estimate will not be above or below the current estimate of 334 million layers by more than 0.4 percent. Chances are 9 out of 10 that the difference will not exceed 0.6 percent.

Reliability of Layer and Egg Estimates

Item	Root Mean Square Error	90 Percent Confidence Level		Difference Between First and Latest Estimates			Number of Months	
				Average	Smallest	Largest	First Above Latest	First Below Latest
All Layers	<i>Percent</i> 0.4	<i>Percent</i> 0.6	<i>1,000</i> 21	<i>1,000</i> 690	<i>1,000</i> 4	<i>1,000</i> 3,947	<i>Number</i> 12	<i>Number</i> 12
Eggs	0.4	0.6	<i>Million Eggs</i> 0	<i>Million Eggs</i> 16	<i>Million Eggs</i> 0	<i>Million Eggs</i> 75	11	10

Regional Listing

North Atlantic: CT, ME, MA, NH, NJ, NY, PA, RI, VT.

East North Central: IL, IN, MI, OH, WI.

West North Central: IA, KS, MN, MO, NE, ND, SD.

South Atlantic: DE, FL, GA, MD, NC, SC, VA, WV.

South Central: AL, AR, KY, LA, MS, OK, TN, TX.

West: AK, AZ, CA, CO, HI, ID, MT, NM, NV, OR, UT, WA, WY.

Terms and Definitions of Chickens and Eggs Estimates

All Layers includes both table egg and hatching egg flocks regardless of size.

Intended Placements are reported by leading breeders. Coverage may not be 100 percent. Includes expected pullet chicks from eggs sold during the preceding month at the rate of 125 pullet chicks per case of 30 dozen eggs.

Information Contacts

Listed below are the commodity specialists in the Livestock Branch of the National Agricultural Statistics Service to contact for additional information.

- Dan Kerestes, Chief, Livestock Branch(202) 720-3570
- Bruce Boess, Head, Poultry and Specialty Commodities Section.....(202) 720-4447
- David Colwell - Cold Storage(202) 720-8784
- Doug Bounds - Poultry Slaughter, Turkey Hatchery, Turkeys Raised(202) 690-3237
- Chris Hawthorn - Catfish Processing, Catfish Production, Trout Production,
 Census of Aquaculture, Egg Products, Mink(202) 720-0585
- Kim Linonis - Layers, Eggs(202) 690-8632
- Troy Marshall - Broiler Hatchery, Chicken Hatchery, Honey(202) 720-3244

ACCESS TO REPORTS!!

For your convenience, there are several ways to obtain NASS reports, data products, and services:

INTERNET ACCESS

All NASS reports are available free of charge. For free access, connect to the Internet and go to the NASS Home Page at: www.nass.usda.gov.

E-MAIL SUBSCRIPTION

All NASS reports are available by subscription free of charge direct to your e-mail address. Starting with the NASS Home Page at www.nass.usda.gov, under the right navigation, *Receive reports by Email*, click on **National** or **State**. Follow the instructions on the screen.

PRINTED REPORTS OR DATA PRODUCTS

CALL OUR TOLL-FREE ORDER DESK: 800-999-6779 (U.S. and Canada)
Other areas, please call 703-605-6220 FAX: 703-605-6880
(Visa, MasterCard, check, or money order acceptable for payment.)

ASSISTANCE

For **assistance** with general agricultural statistics or further information about NASS or its products or services, contact the **Agricultural Statistics Hotline** at **800-727-9540**, 7:30 a.m. to 4:00 p.m. ET, or e-mail: nass@nass.usda.gov.

The U.S. Department of Agriculture (USDA) prohibits discrimination in all its programs and activities on the basis of race, color, national origin, age, disability, and where applicable, sex, marital status, familial status, parental status, religion, sexual orientation, genetic information, political beliefs, reprisal, or because all or a part of an individual's income is derived from any public assistance program. (Not all prohibited bases apply to all programs.) Persons with disabilities who require alternative means for communication of program information (Braille, large print, audiotape, etc.) should contact USDA's TARGET Center at (202) 720-2600 (voice and TDD).

To file a complaint of discrimination, write to USDA, Director, Office of Civil Rights, 1400 Independence Avenue, S.W., Washington, D.C. 20250-9410, or call (800) 795-3272 (voice) or (202) 720-6382 (TDD). USDA is an equal opportunity provider and employer.