

Chickens and Eggs

Released November 23, 2009, by the National Agricultural Statistics Service (NASS), Agricultural Statistics Board, U.S. Department of Agriculture. For information on "Layers and Eggs" call Kim Linonis at (202) 690-8632, for "Chicks Hatched" call Troy Marshall at (202) 720-3244, office hours 7:30 a.m. to 4:00 p.m. ET.

October Egg Production Up 1 Percent

U.S. egg production totaled 7.69 billion during October 2009, up 1 percent from last year. Production included 6.63 billion table eggs, and 1.06 billion hatching eggs, of which 990 million were broiler-type and 70 million were egg-type. The total number of layers during October 2009 averaged 336 million, up slightly from last year. October egg production per 100 layers was 2,292 eggs, up 1 percent from October 2008.

All layers in the U.S. on November 1, 2009 totaled 337 million, up slightly from last year. The 337 million layers consisted of 281 million layers producing table or market type eggs, 52.3 million layers producing broiler-type hatching eggs, and 2.90 million layers producing egg-type hatching eggs. Rate of lay per day on November 1, 2009, averaged 74.3 eggs per 100 layers, up 1 percent from November 1, 2008.

Egg-Type Chicks Hatched Down 7 Percent

Egg-type chicks hatched during October 2009 totaled 37.4 million, down 7 percent from October 2008. Eggs in incubators totaled 34.8 million on November 1, 2009, up 3 percent from a year ago.

Domestic placements of egg-type pullet chicks for future hatchery supply flocks by leading breeders totaled 241 thousand during October 2009, down 12 percent from October 2008.

Broiler-Type Chicks Hatched Down 2 Percent

Broiler-type chicks hatched during October 2009 totaled 729 million, down 2 percent from October 2008. Eggs in incubators totaled 577 million on November 1, 2009, down 1 percent from a year earlier.

Leading breeders placed 7.02 million broiler-type pullet chicks for future domestic hatchery supply flocks during October 2009, down slightly from October 2008.

Contents

Page

U.S. Average Number of Layers on Hand and Egg Production.....	1
U.S. Layers on Hand and Eggs Produced by Type, Forced Molt, and Pullets.....	3
Layers on Hand and Eggs Produced by State.....	5
Egg Production by Type and State.....	7
Forced Molt.....	9
U.S. Hatchery Production Summary.....	10
Egg-Type Hatchery.....	11
Egg-Type Intended Placements.....	12
Broiler-Type Hatchery.....	12
Broiler-Type Intended Placements.....	14
Reliability of Chickens and Eggs Estimates.....	15
Regional Listing.....	16
Terms and Definitions of Chickens and Eggs Estimates.....	16
Information Contacts.....	16

**All Layers: Average Number on Hand During the Month,
United States, 2008-09**

Month	2008	2009
	<i>1,000 Layers</i>	<i>1,000 Layers</i>
Dec ¹	346,225	340,302
Jan	344,737	340,936
Feb	343,299	340,614
Mar	342,017	340,455
Apr	340,838	339,745
May	340,116	336,695
Jun	338,664	333,388
Jul	336,276	332,143
Aug	335,265	332,291
Sep ²	334,489	333,611
Oct	334,937	335,674
Nov	337,995	

¹ December preceding year.

² Revised 2009 only.

**Eggs: Production During the Month by Type,
United States, 2008-09**

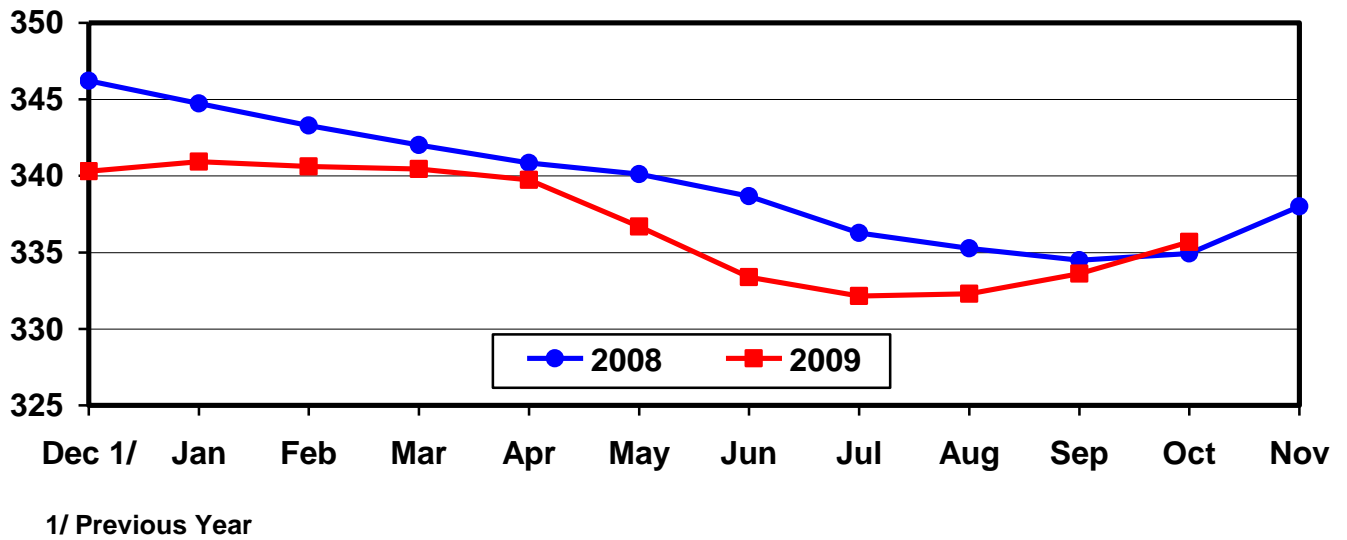
Month	Total Eggs ¹		Table Eggs		Hatching Eggs	
	2008	2009	2008	2009	2008	2009
	<i>Million Eggs</i>	<i>Million Eggs</i>	<i>Million Eggs</i>	<i>Million Eggs</i>	<i>Million Eggs</i>	<i>Million Eggs</i>
Dec ²	7,808	7,768	6,666	6,701	1,143	1,068
Jan	7,646	7,666	6,498	6,591	1,149	1,075
Feb	7,114	6,892	6,034	5,906	1,080	985
Mar	7,675	7,724	6,517	6,632	1,159	1,093
Apr	7,373	7,461	6,256	6,408	1,117	1,053
May	7,564	7,597	6,409	6,505	1,155	1,092
Jun	7,367	7,347	6,262	6,291	1,104	1,056
Jul	7,599	7,575	6,474	6,494	1,125	1,081
Aug	7,551	7,589	6,436	6,514	1,115	1,075
Sep	7,339	7,371	6,272	6,341	1,067	1,030
Oct	7,625	7,692	6,538	6,633	1,088	1,060
Nov	7,490		6,446		1,044	
During Year ¹	90,151		76,811		13,346	

¹ Totals may not add due to rounding.

² December preceding year.

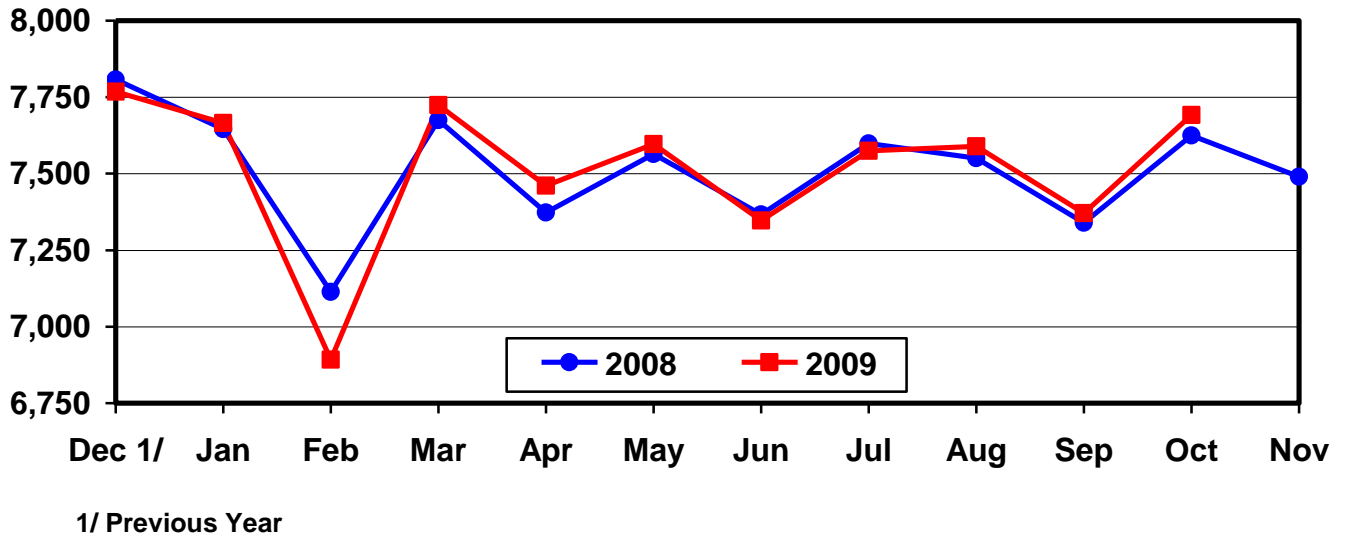
U.S. Average Number of Layers During the Month

Million Layers



U.S. All Egg Production During the Month

Million Eggs



**Layers and Eggs: Layers on Hand and Eggs Produced by Type,
and Forced Molt, United States, September-October 2008-09**

Item	Unit	2008	2009 ¹	2009 as % of 2008
Layers During Sep ²	1,000			
All Layers		334,489	333,611	100
Table Egg Type		277,308	278,160	100
Hatching Egg Type		57,181	55,451	97
Broiler-Type Hatching		54,334	52,538	97
Egg-Type Hatching		2,847	2,913	102
Eggs per 100 Layers During Sep	Number			
All Layers		2,194	2,209	101
Table Egg Type		2,262	2,280	101
Hatching Egg Type		1,866	1,857	100
Broiler-Type Hatching		1,842	1,829	99
Egg-Type Hatching		2,318	2,369	102
Eggs Produced During Sep ²	Million			
All Layers		7,339	7,371	100
Table Egg Type		6,272	6,341	101
Hatching Egg Type		1,067	1,030	97
Broiler-Type Hatching		1,001	961	96
Egg-Type Hatching		66	69	105
Layers on Oct 1 ²	1,000			
All Layers		333,534	334,652	100
Table Egg Type		276,897	279,425	101
Hatching Egg Type		56,637	55,227	98
Broiler-Type Hatching		53,716	52,350	97
Egg-Type Hatching		2,921	2,877	98
Eggs per 100 Layers on Oct 1	Number			
All Layers		73.4	73.4	100
Table Egg Type		75.7	75.7	100
Hatching Egg Type		61.9	61.6	100
Broiler-Type Hatching		61.2	60.6	99
Egg-Type Hatching		76.0	78.7	104
Forced Molt Layers on Oct 1	Percent			
Percent Being Molted		3.7	3.4	92
Percent with Molt Completed		21.9	20.9	95
Layers Sold for Slaughter During Sep	1,000	13,943	13,986	100
Layers Rendered, Died, Destroyed, Composted or Disappeared For Any Reason During Sep	1,000	7,251	6,098	84
Pullets on Oct 1	1,000	102,126	101,607	99
Pullets Added During Sep ³	1,000	20,504	24,078	117

¹ Revised.

² Totals may not add due to rounding.

³ Pullet chicks less than 3 days old added to pullet flocks.

**Layers and Eggs: Layers on Hand and Eggs Produced by Type,
and Forced Molt, United States, October-November 2008-09**

Item	Unit	2008	2009	2009 as % of 2008
Layers During Oct ¹	1,000			
All Layers		334,937	335,674	100
Table Egg Type		278,217	280,437	101
Hatching Egg Type		56,720	55,237	97
Broiler-Type Hatching		53,830	52,345	97
Egg-Type Hatching		2,890	2,892	100
Eggs per 100 Layers During Oct	Number			
All Layers		2,277	2,292	101
Table Egg Type		2,350	2,365	101
Hatching Egg Type		1,918	1,919	100
Broiler-Type Hatching		1,893	1,891	100
Egg-Type Hatching		2,388	2,420	101
Eggs Produced During Oct ¹	Million			
All Layers		7,625	7,692	101
Table Egg Type		6,538	6,633	101
Hatching Egg Type		1,088	1,060	97
Broiler-Type Hatching		1,019	990	97
Egg-Type Hatching		69	70	101
Layers on Nov 1 ¹	1,000			
All Layers		336,301	336,650	100
Table Egg Type		279,515	281,428	101
Hatching Egg Type		56,786	55,222	97
Broiler-Type Hatching		53,930	52,327	97
Egg-Type Hatching		2,856	2,895	101
Eggs per 100 Layers on Nov 1	Number			
All Layers		73.4	74.3	101
Table Egg Type		75.8	76.7	101
Hatching Egg Type		61.7	61.7	100
Broiler-Type Hatching		60.8	60.8	100
Egg-Type Hatching		78.8	77.3	98
Forced Molt Layers on Nov 1	Percent			
Percent Being Molted		2.1	2.2	105
Percent with Molt Completed		22.7	21.8	96
Layers Sold for Slaughter During Oct	1,000	13,778	12,397	90
Layers Rendered, Died, Destroyed, Composted or Disappeared For Any Reason During Oct	1,000	6,348	6,313	99
Pullets on Nov 1	1,000	100,965	100,758	100
Pullets Added During Oct ²	1,000	22,237	20,955	94

¹ Totals may not add due to rounding.

² Pullet chicks less than 3 days old added to pullet flocks.

**Layers and Eggs: Layers on Hand and Eggs Produced by State
and United States, During September 2008-09**

State	Table Egg Layers in Flocks 30,000 and Above		All Layers		Eggs per 100 for All Layers	
	2008	2009	2008	2009 ¹	2008	2009
	<i>1,000</i>	<i>1,000</i>	<i>1,000</i>	<i>1,000</i>	<i>Number</i>	<i>Number</i>
AL	1,398	1,261	9,334	9,227	1,886	1,897
AR	3,727	3,440	12,835	11,818	2,018	2,014
CA	19,908	19,249	20,212	19,551	2,177	2,235
CO	3,155	3,113	3,667	3,575	2,400	2,406
CT	2,866	2,580	2,927	2,639	2,187	2,387
FL	9,563	9,377	9,930	9,700	2,105	2,258
GA	9,278	8,535	17,959	17,176	2,005	2,119
HI	309	290	330	315	1,758	1,778
IL	5,183	4,705	5,395	4,914	2,187	2,218
IN	23,093	22,249	23,791	23,000	2,215	2,261
IA	52,270	52,990	53,214	53,901	2,208	2,215
ME	3,602	3,395	3,678	3,487	2,202	2,208
MD	2,262	1,984	2,396	2,111	2,295	2,037
MI	9,034	9,872	9,191	10,022	2,405	2,325
MN	9,271	9,772	9,726	10,242	2,313	2,255
MS	1,466	1,350	6,171	5,507	1,993	2,016
MO	5,318	5,925	6,619	7,130	2,312	2,188
NE	9,697	9,566	9,747	9,616	2,421	2,340
NY	3,787	3,786	3,997	4,006	2,452	2,371
NC	4,840	5,587	12,020	12,617	2,013	1,997
OH	25,424	26,067	25,871	26,538	2,277	2,284
OR	2,406	2,246	2,561	2,381	2,421	2,478
PA	20,449	21,564	21,556	22,641	2,347	2,372
SC	3,051	3,246	4,343	4,643	2,049	2,089
SD	2,466	2,355	2,526	2,395	2,296	2,505
TX	13,853	13,048	18,412	17,437	2,167	2,214
VA	1,206	1,291	2,929	3,150	1,980	2,000
WA	5,580	6,057	5,641	6,172	2,269	2,236
WI	3,979	4,278	4,382	4,874	2,214	2,257
Oth Sts ²	14,677	14,513	23,129	22,826	2,149	2,107
US	273,118	273,691	334,489	333,611	2,194	2,209

¹ Revised.

² Not published separately to avoid disclosing data for individual operations.

**Layers and Eggs: Layers on Hand and Eggs Produced by State
and United States, During October 2008-09**

State	Table Egg Layers in Flocks 30,000 and Above		All Layers		Eggs per 100 for All Layers	
	2008	2009	2008	2009	2008	2009
	<i>1,000</i>	<i>1,000</i>	<i>1,000</i>	<i>1,000</i>	<i>Number</i>	<i>Number</i>
AL	1,387	1,295	9,314	9,184	1,943	1,949
AR	3,663	3,434	12,584	11,966	2,074	2,039
CA	19,725	18,881	20,028	19,180	2,232	2,336
CO	3,242	3,201	3,726	3,680	2,442	2,446
CT	2,712	2,499	2,772	2,560	2,273	2,422
FL	9,639	9,368	10,005	9,721	2,229	2,417
GA	9,324	8,587	18,008	17,163	2,127	2,197
HI	308	295	333	320	1,742	1,781
IL	5,303	4,928	5,510	5,138	2,323	2,297
IN	23,064	22,515	23,802	23,198	2,281	2,354
IA	52,132	53,303	53,081	54,200	2,332	2,292
ME	3,563	3,538	3,638	3,630	2,281	2,314
MD	2,141	2,034	2,292	2,173	2,269	2,117
MI	9,198	10,273	9,348	10,423	2,493	2,322
MN	9,453	9,838	9,915	10,294	2,380	2,312
MS	1,534	1,414	6,280	5,603	2,054	2,088
MO	5,482	5,944	6,761	7,112	2,263	2,292
NE	9,495	9,470	9,545	9,520	2,441	2,447
NY	3,801	3,845	4,015	4,066	2,516	2,484
NC	4,853	5,623	11,940	12,680	2,085	2,082
OH	25,979	26,617	26,417	27,071	2,328	2,364
OR	2,191	2,185	2,338	2,334	2,609	2,571
PA	20,330	21,771	21,447	22,849	2,453	2,451
SC	3,070	3,293	4,367	4,686	2,107	2,155
SD	2,463	2,357	2,523	2,397	2,457	2,503
TX	14,149	13,103	18,651	17,389	2,306	2,323
VA	1,263	1,323	2,906	3,215	2,030	2,146
WA	5,791	6,111	5,852	6,226	2,341	2,377
WI	4,117	4,368	4,521	4,941	2,300	2,449
Oth Sts ¹	14,651	14,555	23,018	22,755	2,198	2,171
US	274,023	275,968	334,937	335,674	2,277	2,292

¹ Not published separately to avoid disclosing data for individual operations.

**Egg Production: By Type, State, and United States,
September 2008-09**

State	Total Production ¹		Table Eggs ²		Hatching Eggs ²	
	2008	2009	2008	2009	2008	2009
	<i>Million Eggs</i>	<i>Million Eggs</i>	<i>Million Eggs</i>	<i>Million Eggs</i>	<i>Million Eggs</i>	<i>Million Eggs</i>
AL	176	175	33	30	143	145
AR	259	238	92	84	167	154
CA	440	437				
CO	88	86				
CT	64	63				
FL	209	219	203	215	6	4
GA	360	364	198	197	162	167
HI	5.8	5.6	5.8	5.6	0	0
IL	118	109	115	106	3	3
IN	527	520	515	506	12	14
IA	1,175	1,194	1,159	1,181	16	13
ME	81	77				
MD	55	43	53	42	2	1
MI	221	233				
MN	225	231	217	223	8	8
MS	123	111	35	32	88	79
MO	153	156				
NE	236	225	236	225	0	0
NY	98	95				
NC	242	252	113	130	129	122
OH	589	606				
OR	62	59	60	57	2	2
PA	506	537	486	518	20	19
SC	89	97	68	74	21	23
SD	58	60	58	60	0	0
TX	399	386				
VA	58	63	28	29	30	34
WA	128	138				
WI	97	110				
Oth Sts ³	497	481	360	355	137	126
US ¹	7,339	7,371	6,272	6,341	1,067	1,030

¹ Totals may not add due to rounding.

² Data by type of flock not shown for some States to avoid disclosing individual operations, data included in US totals.

³ Not published separately to avoid disclosing data for individual operations.

**Egg Production: By Type, State, and United States,
October 2008-09**

State	Total Production ¹		Table Eggs ²		Hatching Eggs ²	
	2008	2009	2008	2009	2008	2009
	<i>Million Eggs</i>	<i>Million Eggs</i>	<i>Million Eggs</i>	<i>Million Eggs</i>	<i>Million Eggs</i>	<i>Million Eggs</i>
AL	181	179	34	30	147	149
AR	261	244	91	83	170	161
CA	447	448				
CO	91	90				
CT	63	62				
FL	223	235	217	230	6	5
GA	383	377	214	209	169	168
HI	5.8	5.7	5.8	5.7	0	0
IL	128	118	125	115	3	3
IN	543	546	530	533	13	13
IA	1,238	1,242	1,221	1,228	17	14
ME	83	84				
MD	52	46	50	44	2	2
MI	233	242				
MN	236	238	228	230	8	8
MS	129	117	38	35	91	82
MO	153	163				
NE	233	233	233	233	0	0
NY	101	101				
NC	249	264	120	137	129	127
OH	615	640				
OR	61	60	59	58	2	2
PA	526	560	506	541	20	19
SC	92	101	69	78	23	23
SD	62	60	62	60	0	0
TX	430	404				
VA	59	69	29	33	30	36
WA	137	148				
WI	104	121				
Oth Sts ³	506	494	370	367	137	128
US ¹	7,625	7,692	6,538	6,633	1,088	1,060

¹ Totals may not add due to rounding.

² Data by type of flock not shown for some States to avoid disclosing individual operations, data included in US totals.

³ Not published separately to avoid disclosing data for individual operations.

**Forced Molt: Percent of All Layers by Month,
United States, 2008-09**

Month	Percent Being Molted ¹		Percent with Molt Completed ¹	
	2008	2009	2008	2009
	<i>Percent</i>	<i>Percent</i>	<i>Percent</i>	<i>Percent</i>
Jan	3.0	3.2	22.7	21.2
Feb	3.9	3.4	21.7	21.4
Mar	2.4	3.4	22.1	21.4
Apr	2.8	1.9	21.3	21.7
May	4.1	4.5	20.8	20.5
Jun	3.7	3.4	20.9	21.3
Jul	3.4	3.4	20.8	20.6
Aug	3.9	2.7	21.2	21.1
Sep	3.9	2.9	20.8	21.0
Oct	3.7	3.4	21.9	20.9
Nov	2.1	2.2	22.7	21.8
Dec	1.9		22.1	

¹ As of first of month.

**Forced Molt: Percent of All Layers by State
and United States, November 1, 2008-09**

State	Percent Being Molted ¹		Percent with Molt Completed ¹	
	2008	2009	2008	2009
	<i>Percent</i>	<i>Percent</i>	<i>Percent</i>	<i>Percent</i>
AL	1.5	1.0	5.5	8.0
AR	1.0	0.5	9.5	13.0
CA	2.0	4.0	35.5	33.5
CO	1.0	0.0	15.5	17.0
CT	0.0	0.0	20.0	6.5
FL	4.0	1.5	37.0	34.5
GA	0.0	2.0	13.5	14.5
HI	12.0	10.0	55.0	51.0
IL	1.5	0.0	32.0	33.0
IN	3.5	2.0	35.0	31.5
IA	3.0	3.5	34.5	31.5
ME	0.0	0.0	0.0	0.0
MD	6.5	4.5	11.0	6.5
MI	1.0	1.5	21.5	18.5
MN	2.5	2.5	25.5	29.0
MS	1.0	0.0	11.0	12.0
MO	3.0	4.0	8.0	19.0
NE	0.0	0.0	3.5	4.0
NY	2.5	1.0	5.5	7.0
NC	0.0	0.0	11.0	9.5
OH	4.0	3.0	17.0	19.5
OR	2.5	4.5	35.5	29.5
PA	1.0	1.0	13.0	14.0
SC	0.0	2.0	20.0	21.5
SD	2.5	2.5	32.5	20.5
TX	0.5	1.5	28.0	18.5
VA	0.0	0.0	17.5	18.5
WA	6.5	3.0	28.0	37.0
WI	3.0	3.0	24.5	33.0
Oth Sts ²	2.4	4.0	22.1	18.2
US	2.1	2.2	22.7	21.8

¹ As of first of month.

² Not published separately to avoid disclosing data for individual operations.

**Hatchery Production: Eggs in Incubators, Chicks Hatched,
and Placements by Type, United States, October-November 2008-09**

Item	2008	2009	2009 as % of 2008
	<i>1,000</i>	<i>1,000</i>	<i>Percent</i>
Egg-Type			
Eggs in Incubators on Nov 1	33,806	34,774	103
Chicks Hatched During Oct	40,198	37,406	93
Chicks Hatched Jan thru Oct	395,964	387,778	98
Pullets Hatched During Oct for Intended Placements in Hatchery Supply Flocks	273	241	88
7-18 Months Earlier ¹	2,950	3,017	102
Broiler-Type			
Eggs in Incubators on Nov 1	585,110	576,843	99
Chicks Hatched During Oct	740,964	728,909	98
Chicks Hatched Jan thru Oct	7,971,301	7,603,562	95
Pullets Hatched During Oct for Intended Placements in Hatchery Supply Flocks	7,042	7,017	100
7-15 Months Earlier ²	65,234	62,823	96

¹ 2009 includes pullet chicks hatched Apr 2008 through Mar 2009.

² 2009 includes pullet chicks hatched Jul 2008 through Mar 2009.

**Egg-Type Eggs in Incubators: By Region and United States,
November 1, 2008-09**

Region	2008	2009	2009 as % of 2008
	<i>1,000</i>	<i>1,000</i>	<i>Percent</i>
North Atlantic	5,205	4,567	88
E North Central	6,539	7,230	111
W North Central	7,920	7,542	95
South Atlantic	4,231	4,007	95
South Central	5,565	4,125	74
West	4,346	7,303	168
US	33,806	34,774	103

Egg-Type Chicks Hatched: By Month, United States, 2008-09

Month	By Months			Cumulative		
	2008	2009	2009 as % of 2008	2008	2009	2009 as % of 2008
	<i>1,000</i>	<i>1,000</i>	<i>Percent</i>	<i>1,000</i>	<i>1,000</i>	<i>Percent</i>
Jan	40,256	38,083	95	40,256	38,083	95
Feb	38,534	36,861	96	78,790	74,944	95
Mar	41,954	40,137	96	120,744	115,081	95
Apr	42,329	40,621	96	163,073	155,702	95
May	41,826	37,774	90	204,899	193,476	94
Jun	40,928	43,453	106	245,827	236,929	96
Jul	37,250	36,282	97	283,077	273,211	97
Aug	35,578	37,160	104	318,655	310,371	97
Sep	37,111	40,001	108	355,766	350,372	98
Oct	40,198	37,406	93	395,964	387,778	98
Nov	34,187			430,151		
Dec	37,091			467,242		

**Intended Placements: Egg-Type Pullet Chicks for Hatchery Supply
Flocks by Month and Total, United States, 2008-09**

Month	Pullet Chicks Hatched		2009 as % of 2008	Cumulative Potential Plcmts Relative to Current Supply Flocks 7-18 Months Earlier ¹	
	2008	2009		2009	2010
	<i>1,000</i>	<i>1,000</i>	<i>Percent</i>	<i>1,000</i>	<i>1,000</i>
Jan	198	240	121	2,907	3,198
Feb	271	256	94	2,968	3,296
Mar	245	277	113	2,969	3,308
Apr	264	307	116	2,879	3,318
May	227	275	121	2,968	3,286
Jun	231	321	139	3,004	
Jul	244	342	140	2,958	
Aug	279	291	104	3,000	
Sep ²	210	220	105	2,985	
Oct	273	241	88	3,017	
Nov	317			3,060	
Dec	199			3,108	
Total	2,958				

¹ For October 2009, includes breeder pullet chicks hatched Apr 2008 through Mar 2009. The 7-18 months represent the first laying cycle. Molting and additional laying cycles will increase the cumulative potential placements.

² Revision to 2008 pullet chicks hatched and cumulative potential placements for April 2010.

**Broiler-Type Eggs in Incubators: By Region
and United States, November 1, 2008-09**

Region	2008	2009	2009 as % of 2008
	<i>1,000</i>	<i>1,000</i>	<i>Percent</i>
North Atlantic	10,193	10,575	104
E North Central	11,028	11,467	104
W North Central	25,608	25,013	98
South Atlantic	218,175	215,733	99
South Central	296,927	292,966	99
West	23,179	21,089	91
US	585,110	576,843	99

**Broiler-Type Chicks Hatched: By State
and United States, October 2008-09**

State	During October			Jan-Oct		
	2008	2009	2009 as % of 2008	2008	2009	2009 as % of 2008
	<i>1,000</i>	<i>1,000</i>	<i>Percent</i>	<i>1,000</i>	<i>1,000</i>	<i>Percent</i>
AL	104,853	101,641	97	1,144,662	1,068,181	93
AR	87,436	81,474	93	969,241	863,977	89
DE	11,810	11,880	101	136,128	127,004	93
FL	4,435	4,349	98	48,839	36,743	75
GA	113,259	110,177	97	1,216,743	1,150,277	95
KY	26,897	26,985	100	279,991	277,450	99
LA	12,353	12,254	99	135,142	114,067	84
MD	29,305	30,660	105	318,632	319,329	100
MS	63,338	63,303	100	683,537	659,719	97
NC	64,547	62,738	97	695,698	671,992	97
OK	25,810	24,504	95	252,702	246,461	98
PA	14,241	13,926	98	151,178	138,133	91
SC	18,998	19,532	103	195,500	198,319	101
TX	52,898	53,728	102	560,318	562,588	100
VA	22,043	22,126	100	226,274	222,460	98
CA, MO, TN, & WV	66,814	66,357	99	710,654	700,536	99
19 Sts ¹	719,037	705,634	98	7,725,239	7,357,236	95
Oth Sts ²	21,927	23,275	106	246,062	246,326	100
US	740,964	728,909	98	7,971,301	7,603,562	95

¹ States in the weekly hatchery production estimating program.

² Not published separately to avoid disclosing data for individual operations.

Broiler-Type Chicks Hatched: By Month, United States, 2008-09

Month	By Months			Cumulative		
	2008	2009	2009 as % of 2008	2008	2009	2009 as % of 2008
	<i>1,000</i>	<i>1,000</i>	<i>Percent</i>	<i>1,000</i>	<i>1,000</i>	<i>Percent</i>
Jan	826,027	778,401	94	826,027	778,401	94
Feb	775,280	700,913	90	1,601,307	1,479,314	92
Mar	836,890	783,348	94	2,438,197	2,262,662	93
Apr	801,548	755,862	94	3,239,745	3,018,524	93
May	825,323	786,471	95	4,065,068	3,804,995	94
Jun	805,793	770,970	96	4,870,861	4,575,965	94
Jul	805,182	781,215	97	5,676,043	5,357,180	94
Aug	799,059	777,996	97	6,475,102	6,135,176	95
Sep	755,235	739,477	98	7,230,337	6,874,653	95
Oct	740,964	728,909	98	7,971,301	7,603,562	95
Nov	705,312			8,676,613		
Dec	779,304			9,455,917		

**Intended Placements: Broiler-Type Pullet Chicks for Hatchery
Supply Flocks by Month and Total, 2008-09**

Month	Pullet Chicks Hatched		2009 as % of 2008	Cumulative Potential Plcmts Relative to Current Supply Flocks 7-15 Months Earlier ¹	
	2008	2009		2009	2010
	<i>1,000</i>	<i>1,000</i>	<i>Percent</i>	<i>1,000</i>	<i>1,000</i>
US Place- ments					
Jan	7,012	7,142	102	65,952	62,645
Feb	7,536	7,215	96	65,444	61,817
Mar	7,090	6,773	96	65,535	61,919
Apr	7,119	6,158	87	65,173	62,449
May	8,217	7,552	92	65,203	62,324
Jun	7,154	7,157	100	64,693	
Jul	6,462	6,214	96	64,183	
Aug	7,697	7,128	93	64,206	
Sep ²	6,886	7,110	103	63,204	
Oct	7,042	7,017	100	62,823	
Nov	7,026			62,519	
Dec	6,580			62,374	
Annual Total	85,821				
Total Place- ments ³					
Jan	8,706	8,410	97		
Feb	9,498	8,524	90		
Mar	9,245	8,626	93		
Apr	8,720	7,664	88		
May	10,089	9,255	92		
Jun	9,228	8,830	96		
Jul	8,017	7,469	93		
Aug	9,603	8,813	92		
Sep ⁴	8,651	8,947	103		
Oct	8,361	8,382	100		
Nov	8,704				
Dec	8,197				
Annual Total	107,019				

¹ For Oct 2009, includes breeder pullet chicks hatched Jul 2008 through Mar 2009.

² Revised 2009 pullet chicks hatched and cumulative placements for April 2010.

³ U.S. production of intended placements worldwide.

⁴ Revised 2009 only.

Reliability of Chickens and Eggs Estimates

Survey Procedures: Primary data for the "**Chickens and Eggs**" report are from weekly and/or monthly questionnaires sent to producers. An attempt is made to collect information for layer and egg estimates from each known contractor and independent producer who has at least 30,000 table egg layers, flocks of hatchery supply layers, or pullet only operations with at least 500 pullets. Coverage for operations with less than 30,000 table egg layers are estimated each month based on data reported in December. Approximately 650 contractors, independent egg producers, and pullet only operations are contacted each month. All known hatcheries, approximately 300, are contacted for information on a weekly and/or monthly basis.

Estimating Procedures: Sound statistical methodology is employed to derive estimates from the reported data. All data are analyzed for unusual values. Data from each operation are compared to their own past operating profile and to trends from similar operations. Data for missing operations are estimated based on similar operations or historical data. NASS field offices prepare these estimates by using a combination of survey indications and historic trends. Individual State estimates are reviewed by the Agricultural Statistics Board for reasonableness. Individual hatchery data are summed to State, regional, and U.S. totals.

For chicken hatcheries, chicks hatched consist of all chicks of domesticated breeds including males and chicks destined for hatchery supply flocks and research purposes. Eggs set are eggs in incubators for the purpose of hatching. The relationship of egg-type chicks hatched to chicken inventory and poultry marketings are carefully monitored. The disposition of egg-type chicks hatched prior to placement into the laying flock can vary significantly, which can make comparisons to changes in layer inventory inconsistent over time. Broiler chicks placed are specifically placed on feed for meat production. Intended placement data reported by leading breeders include pullet chicks expected from eggs sold the preceding month. The breeders in this report account for a large percentage of replacement pullets for hatchery supply flocks. Production of replacement pullets by these breeders indicates the number of pullets available to hatchery supply layer flocks several months before the pullets will actually move into the laying flocks. "Hatchery Supply Flocks" include all generations of layers which could lay eggs to supply a hatchery. This includes the generations of parents, grandparents, great-grandparents, pedigree, etc. Also included are research flocks, vaccine flocks, and specific pathogen-free flocks. The broiler cumulative potential placements are a moving total of the intended placements 7-15 months earlier. The egg-type cumulative potential placements of 7-18 months earlier represent the first laying cycle. Molting and additional laying cycles will increase the cumulative potential placements of egg-type hatching flocks.

Revision Policy: The previous month's estimates are subject to revision if late reports or corrected data indicates a different level. Additionally, revisions after the monthly report will be made at the end of the marketing year and published in the annual reports of "**Chickens and Eggs Summary**" and "**Hatchery Production**".

Reliability: Estimates are based on a census of all known contractors and independent producers who have at least 30,000 table egg layers, flocks of hatchery supply layers, pullet only operations with at least 500 pullets, or operating hatcheries and therefore, have no sampling error. However, estimates are subject to errors such as omission, duplication, and mistakes in reporting, recording, and processing the data. While these errors cannot be measured directly, they are minimized through strict quality controls in the data collection process and a careful review of all reported data for consistency and reasonableness.

To assist in evaluating the reliability of the estimates in this report, the "Root Mean Square Error" is shown for selected items in the following table. The "Root Mean Square Error" is a statistical measure based on past performance and is computed using the differences between first and final estimates. The "Root Mean Square Error" for all layers over the past 24 months is 0.3 percent. This means that chances are 2 out of 3 that the final estimate will not be above or below the current estimate of 336 million layers by more than 0.3 percent. Chances are 9 out of 10 that the difference will not exceed 0.5 percent.

Reliability of Layer and Egg Estimates

Item	Root Mean Square Error	90 Percent Confidence Level		Difference Between First and Latest Estimates			Number of Months	
				Average	Smallest	Largest	First Above Latest	First Below Latest
All Layers	<i>Percent</i> 0.3	<i>Percent</i> 0.5	<i>1,000</i> 18	<i>1,000</i> 555	<i>1,000</i> 2	<i>1,000</i> 3,473	<i>Number</i> 13	<i>Number</i> 11
Eggs	0.3	0.6	<i>Million Eggs</i> 0	<i>Million Eggs</i> 13	<i>Million Eggs</i> 0	<i>Million Eggs</i> 75	11	9

Regional Listing

North Atlantic: CT, ME, MA, NH, NJ, NY, PA, RI, VT.

East North Central: IL, IN, MI, OH, WI.

West North Central: IA, KS, MN, MO, NE, ND, SD.

South Atlantic: DE, FL, GA, MD, NC, SC, VA, WV.

South Central: AL, AR, KY, LA, MS, OK, TN, TX.

West: AK, AZ, CA, CO, HI, ID, MT, NM, NV, OR, UT, WA, WY.

Terms and Definitions of Chickens and Eggs Estimates

All Layers includes both table egg and hatching egg flocks regardless of size.

Intended Placements are reported by leading breeders. Coverage may not be 100 percent. Includes expected pullet chicks from eggs sold during the preceding month at the rate of 125 pullet chicks per case of 30 dozen eggs.

Information Contacts

Listed below are the commodity specialists in the Livestock Branch of the National Agricultural Statistics Service to contact for additional information.

- Dan Kerestes, Chief, Livestock Branch(202) 720-3570
- Bruce Boess, Head, Poultry and Specialty Commodities Section.....(202) 720-4447
- David Colwell - Cold Storage(202) 720-8784
- Doug Bounds - Poultry Slaughter, Turkey Hatchery, Turkeys Raised(202) 690-3237
- Chris Hawthorn - Catfish Processing, Catfish Production, Trout Production,
Census of Aquaculture, Egg Products, Mink(202) 720-0585
- Kim Linonis - Layers, Eggs(202) 690-8632
- Troy Marshall - Broiler Hatchery, Chicken Hatchery, Honey(202) 720-3244

ACCESS TO REPORTS!!

For your convenience, there are several ways to obtain NASS reports, data products, and services:

INTERNET ACCESS

All NASS reports are available free of charge. For free access, connect to the Internet and go to the NASS Home Page at: www.nass.usda.gov.

E-MAIL SUBSCRIPTION

All NASS reports are available by subscription free of charge direct to your e-mail address. Starting with the NASS Home Page at www.nass.usda.gov, under the right navigation, *Receive reports by Email*, click on **National** or **State**. Follow the instructions on the screen.

PRINTED REPORTS OR DATA PRODUCTS

CALL OUR TOLL-FREE ORDER DESK: 800-999-6779 (U.S. and Canada)
Other areas, please call 703-605-6220 FAX: 703-605-6880
(Visa, MasterCard, check, or money order acceptable for payment.)

ASSISTANCE

For **assistance** with general agricultural statistics or further information about NASS or its products or services, contact the **Agricultural Statistics Hotline** at **800-727-9540**, 7:30 a.m. to 4:00 p.m. ET, or e-mail: nass@nass.usda.gov.

The U.S. Department of Agriculture (USDA) prohibits discrimination in all its programs and activities on the basis of race, color, national origin, age, disability, and where applicable, sex, marital status, familial status, parental status, religion, sexual orientation, genetic information, political beliefs, reprisal, or because all or a part of an individual's income is derived from any public assistance program. (Not all prohibited bases apply to all programs.) Persons with disabilities who require alternative means for communication of program information (Braille, large print, audiotape, etc.) should contact USDA's TARGET Center at (202) 720-2600 (voice and TDD).

To file a complaint of discrimination, write to USDA, Director, Office of Civil Rights, 1400 Independence Avenue, S.W., Washington, D.C. 20250-9410, or call (800) 795-3272 (voice) or (202) 720-6382 (TDD). USDA is an equal opportunity provider and employer.