

Chickens and Eggs

Released December 22, 2009, by the National Agricultural Statistics Service (NASS), Agricultural Statistics Board, U.S. Department of Agriculture. For information on "Layers and Eggs" call Kim Linonis at (202) 690-8632, for "Chicks Hatched" call Troy Marshall at (202) 720-3244, office hours 7:30 a.m. to 4:00 p.m. ET.

November Egg Production Up 1 Percent

U.S. egg production totaled 7.55 billion during November 2009, up 1 percent from last year. Production included 6.52 billion table eggs, and 1.03 billion hatching eggs, of which 960 million were broiler-type and 67 million were egg-type. The total number of layers during November 2009 averaged 337 million, down slightly from last year. November egg production per 100 layers was 2,238 eggs, up 1 percent from November 2008.

All layers in the U.S. on December 1, 2009 totaled 339 million, down slightly from last year. The 339 million layers consisted of 282 million layers producing table or market type eggs, 53.2 million layers producing broiler-type hatching eggs, and 2.90 million layers producing egg-type hatching eggs. Rate of lay per day on December 1, 2009, averaged 74.8 eggs per 100 layers, up 1 percent from December 1, 2008.

Egg-Type Chicks Hatched Up 2 Percent

Egg-type chicks hatched during November 2009 totaled 34.9 million, up 2 percent from November 2008. Eggs in incubators totaled 39.0 million on December 1, 2009, up 12 percent from a year ago.

Domestic placements of egg-type pullet chicks for future hatchery supply flocks by leading breeders totaled 290 thousand during November 2009, down 9 percent from November 2008.

Broiler-Type Chicks Hatched Down Slightly

Broiler-type chicks hatched during November 2009 totaled 704 million, down slightly from November 2008. Eggs in incubators totaled 625 million on December 1, 2009, down 1 percent from a year earlier.

Leading breeders placed 7.26 million broiler-type pullet chicks for future domestic hatchery supply flocks during November 2009, up 3 percent from November 2008.

Contents

Page

U.S. Average Number of Layers on Hand and Egg Production.....	1
U.S. Layers on Hand and Eggs Produced by Type, Forced Molt, and Pullets.....	3
Layers on Hand and Eggs Produced by State.....	5
Egg Production by Type and State	7
Forced Molt	9
U.S. Hatchery Production Summary	10
Egg-Type Hatchery	11
Egg-Type Intended Placements	12
Broiler-Type Hatchery	12
Broiler-Type Intended Placements.....	14
Reliability of Chickens and Eggs Estimates.....	15
Regional Listing	16
Terms and Definitions of Chickens and Eggs Estimates.....	16
Information Contacts.....	16

**All Layers: Average Number on Hand During the Month,
United States, 2008-09**

Month	2008	2009
	<i>1,000 Layers</i>	<i>1,000 Layers</i>
Dec ¹	346,225	340,302
Jan	344,737	340,936
Feb	343,299	340,614
Mar	342,017	340,455
Apr	340,838	339,745
May	340,116	336,695
Jun	338,664	333,388
Jul	336,276	332,143
Aug	335,265	332,291
Sep	334,489	333,611
Oct ²	334,937	335,361
Nov	337,995	337,309

¹ December preceding year.

² Revised 2009 only.

**Eggs: Production During the Month by Type,
United States, 2008-09**

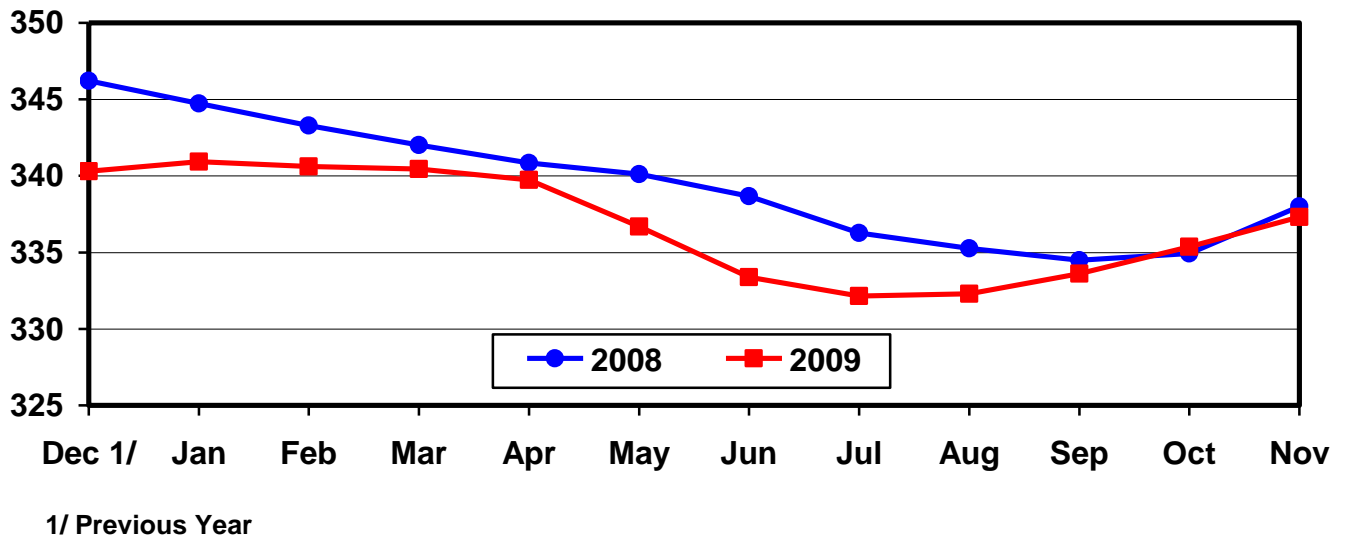
Month	Total Eggs ¹		Table Eggs		Hatching Eggs	
	2008	2009	2008	2009	2008	2009
	<i>Million Eggs</i>	<i>Million Eggs</i>	<i>Million Eggs</i>	<i>Million Eggs</i>	<i>Million Eggs</i>	<i>Million Eggs</i>
Dec ²	7,808	7,768	6,666	6,701	1,143	1,068
Jan	7,646	7,666	6,498	6,591	1,149	1,075
Feb	7,114	6,892	6,034	5,906	1,080	985
Mar	7,675	7,724	6,517	6,632	1,159	1,093
Apr	7,373	7,461	6,256	6,408	1,117	1,053
May	7,564	7,597	6,409	6,505	1,155	1,092
Jun	7,367	7,347	6,262	6,291	1,104	1,056
Jul	7,599	7,575	6,474	6,494	1,125	1,081
Aug	7,551	7,589	6,436	6,514	1,115	1,075
Sep	7,339	7,371	6,272	6,341	1,067	1,030
Oct	7,625	7,685	6,538	6,626	1,088	1,060
Nov	7,490	7,549	6,446	6,521	1,044	1,027
During Year ¹	90,151	90,224	76,811	77,530	13,346	12,695

¹ Totals may not add due to rounding.

² December preceding year.

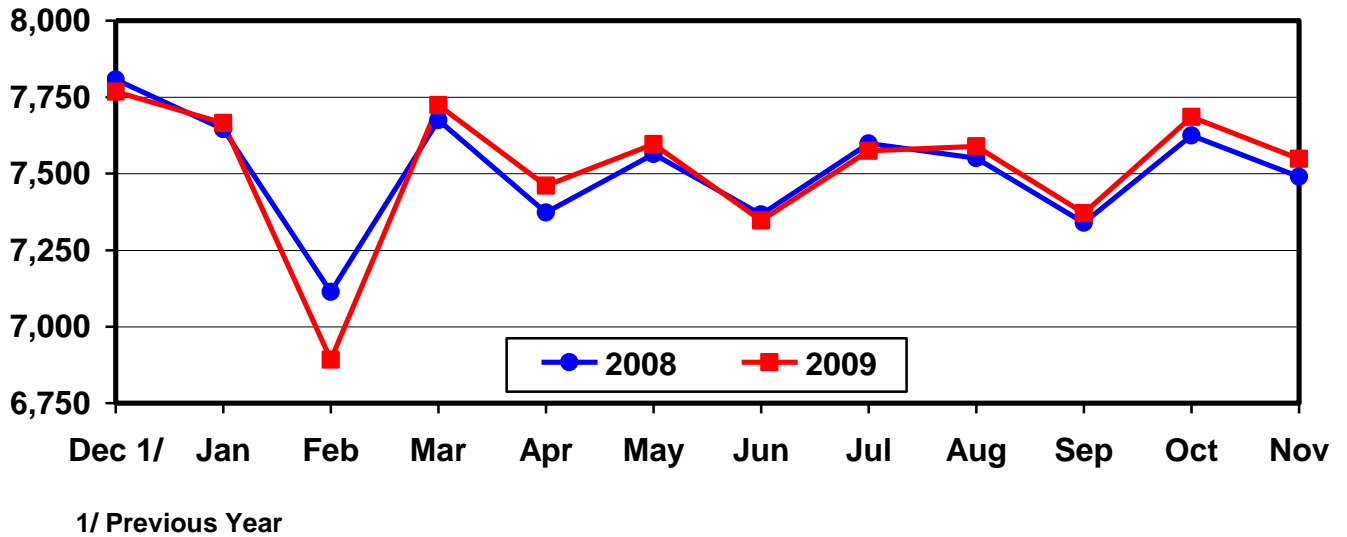
U.S. Average Number of Layers During the Month

Million Layers



U.S. All Egg Production During the Month

Million Eggs



**Layers and Eggs: Layers on Hand and Eggs Produced by Type,
and Forced Molt, United States, October-November 2008-09**

Item	Unit	2008	2009 ¹	2009 as % of 2008
Layers During Oct ²	1,000			
All Layers		334,937	335,361	100
Table Egg Type		278,217	280,124	101
Hatching Egg Type		56,720	55,237	97
Broiler-Type Hatching		53,830	52,345	97
Egg-Type Hatching		2,890	2,892	100
Eggs per 100 Layers During Oct	Number			
All Layers		2,277	2,292	101
Table Egg Type		2,350	2,365	101
Hatching Egg Type		1,918	1,919	100
Broiler-Type Hatching		1,893	1,891	100
Egg-Type Hatching		2,388	2,420	101
Eggs Produced During Oct ²	Million			
All Layers		7,625	7,685	101
Table Egg Type		6,538	6,626	101
Hatching Egg Type		1,088	1,060	97
Broiler-Type Hatching		1,019	990	97
Egg-Type Hatching		69	70	101
Layers on Nov 1 ²	1,000			
All Layers		336,301	336,024	100
Table Egg Type		279,515	280,802	100
Hatching Egg Type		56,786	55,222	97
Broiler-Type Hatching		53,930	52,327	97
Egg-Type Hatching		2,856	2,895	101
Eggs per 100 Layers on Nov 1	Number			
All Layers		73.4	74.2	101
Table Egg Type		75.8	76.7	101
Hatching Egg Type		61.7	61.6	100
Broiler-Type Hatching		60.8	60.8	100
Egg-Type Hatching		78.8	77.3	98
Forced Molt Layers on Nov 1	Percent			
Percent Being Molted		2.1	2.3	110
Percent with Molt Completed		22.7	21.9	96
Layers Sold for Slaughter During Oct	1,000	13,778	12,436	90
Layers Rendered, Died, Destroyed, Composted or Disappeared For Any Reason During Oct	1,000	6,348	6,363	100
Pullets on Nov 1	1,000	100,965	101,039	100
Pullets Added During Oct ³	1,000	22,237	21,100	95

¹ Revised.

² Totals may not add due to rounding.

³ Pullet chicks less than 3 days old added to pullet flocks.

**Layers and Eggs: Layers on Hand and Eggs Produced by Type,
and Forced Molt, United States, November-December 2008-09**

Item	Unit	2008	2009	2009 as % of 2008
Layers During Nov ¹	1,000			
All Layers		337,995	337,309	100
Table Egg Type		281,780	281,629	100
Hatching Egg Type		56,215	55,680	99
Broiler-Type Hatching		53,409	52,779	99
Egg-Type Hatching		2,806	2,901	103
Eggs per 100 Layers During Nov	Number			
All Layers		2,216	2,238	101
Table Egg Type		2,288	2,315	101
Hatching Egg Type		1,857	1,844	99
Broiler-Type Hatching		1,833	1,819	99
Egg-Type Hatching		2,316	2,310	100
Eggs Produced During Nov ¹	Million			
All Layers		7,490	7,549	101
Table Egg Type		6,446	6,521	101
Hatching Egg Type		1,044	1,027	98
Broiler-Type Hatching		979	960	98
Egg-Type Hatching		65	67	103
Layers on Dec 1 ¹	1,000			
All Layers		339,643	338,555	100
Table Egg Type		284,022	282,434	99
Hatching Egg Type		55,621	56,121	101
Broiler-Type Hatching		52,873	53,218	101
Egg-Type Hatching		2,748	2,903	106
Eggs per 100 Layers on Dec 1	Number			
All Layers		74.2	74.8	101
Table Egg Type		76.6	77.6	101
Hatching Egg Type		61.8	60.9	99
Broiler-Type Hatching		61.2	60.0	98
Egg-Type Hatching		75.4	76.9	102
Forced Molt Layers on Dec 1	Percent			
Percent Being Molted		1.9	1.8	95
Percent with Molt Completed		22.1	22.0	100
Layers Sold for Slaughter During Nov	1,000	12,291	10,878	88
Layers Rendered, Died, Destroyed, Composted or Disappeared For Any Reason During Nov	1,000	5,598	6,504	116
Pullets on Dec 1	1,000	98,843	101,333	103
Pullets Added During Nov ²	1,000	19,991	20,821	104

¹ Totals may not add due to rounding.

² Pullet chicks less than 3 days old added to pullet flocks.

**Layers and Eggs: Layers on Hand and Eggs Produced by State
and United States, During October 2008-09**

State	Table Egg Layers in Flocks 30,000 and Above		All Layers		Eggs per 100 for All Layers	
	2008	2009 ¹	2008	2009 ¹	2008	2009 ¹
	<i>1,000</i>	<i>1,000</i>	<i>1,000</i>	<i>1,000</i>	<i>Number</i>	<i>Number</i>
AL	1,387	1,295	9,314	9,184	1,943	1,949
AR	3,663	3,434	12,584	11,966	2,074	2,039
CA	19,725	18,881	20,028	19,180	2,232	2,336
CO	3,242	3,201	3,726	3,680	2,442	2,446
CT	2,712	2,499	2,772	2,560	2,273	2,422
FL	9,639	9,368	10,005	9,721	2,229	2,417
GA	9,324	8,587	18,008	17,163	2,127	2,197
HI	308	295	333	320	1,742	1,781
IL	5,303	4,642	5,510	4,852	2,323	2,288
IN	23,064	22,515	23,802	23,198	2,281	2,354
IA	52,132	53,303	53,081	54,200	2,332	2,292
ME	3,563	3,538	3,638	3,630	2,281	2,314
MD	2,141	2,034	2,292	2,173	2,269	2,117
MI	9,198	10,058	9,348	10,208	2,493	2,322
MN	9,453	9,838	9,915	10,294	2,380	2,312
MS	1,534	1,414	6,280	5,603	2,054	2,088
MO	5,482	5,944	6,761	7,112	2,263	2,292
NE	9,495	9,470	9,545	9,520	2,441	2,447
NY	3,801	3,845	4,015	4,066	2,516	2,484
NC	4,853	5,591	11,940	12,648	2,085	2,079
OH	25,979	26,847	26,417	27,301	2,328	2,366
OR	2,191	2,185	2,338	2,334	2,609	2,571
PA	20,330	21,771	21,447	22,849	2,453	2,451
SC	3,070	3,293	4,367	4,686	2,107	2,155
SD	2,463	2,357	2,523	2,397	2,457	2,503
TX	14,149	13,103	18,651	17,389	2,306	2,323
VA	1,263	1,313	2,906	3,205	2,030	2,153
WA	5,791	6,111	5,852	6,226	2,341	2,377
WI	4,117	4,368	4,521	4,941	2,300	2,449
Oth Sts ²	14,651	14,555	23,018	22,755	2,198	2,171
US	274,023	275,655	334,937	335,361	2,277	2,292

¹ Revised.

² Not published separately to avoid disclosing data for individual operations.

**Layers and Eggs: Layers on Hand and Eggs Produced by State
and United States, During November 2008-09**

State	Table Egg Layers in Flocks 30,000 and Above		All Layers		Eggs per 100 for All Layers	
	2008	2009	2008	2009	2008	2009
	<i>1,000</i>	<i>1,000</i>	<i>1,000</i>	<i>1,000</i>	<i>Number</i>	<i>Number</i>
AL	1,380	1,284	9,345	9,059	1,883	1,888
AR	3,653	3,309	12,498	12,158	1,976	1,966
CA	19,877	19,094	20,182	19,391	2,195	2,305
CO	3,434	3,292	3,882	3,770	2,344	2,414
CT	2,699	2,496	2,758	2,559	2,248	2,267
FL	9,886	9,611	10,277	9,968	2,248	2,388
GA	9,503	9,084	18,167	17,629	2,092	2,150
HI	310	299	338	324	1,657	1,698
IL	5,319	4,418	5,531	4,629	2,350	2,290
IN	23,236	22,805	23,956	23,456	2,217	2,298
IA	52,287	53,201	53,204	54,061	2,263	2,235
ME	3,544	3,620	3,624	3,711	2,180	2,210
MD	2,193	2,101	2,360	2,251	2,119	2,177
MI	9,440	10,178	9,590	10,328	2,398	2,266
MN	9,546	9,865	10,030	10,359	2,263	2,269
MS	1,589	1,515	6,222	5,885	2,041	2,005
MO	5,647	5,744	6,778	6,950	2,184	2,273
NE	9,526	9,366	9,576	9,416	2,308	2,368
NY	3,970	3,860	4,188	4,084	2,412	2,400
NC	5,176	5,866	12,325	13,017	2,069	2,067
OH	26,519	27,100	26,940	27,558	2,238	2,264
OR	2,263	2,047	2,393	2,193	2,549	2,554
PA	20,548	21,984	21,635	23,096	2,380	2,403
SC	3,117	3,234	4,415	4,581	2,106	2,117
SD	2,417	2,404	2,467	2,444	2,432	2,373
TX	14,176	12,935	18,646	17,169	2,269	2,266
VA	1,307	1,264	2,869	3,244	2,022	2,096
WA	5,787	6,123	5,875	6,238	2,281	2,357
WI	4,172	4,339	4,651	4,893	2,301	2,412
Oth Sts ¹	14,932	14,722	23,273	22,888	2,136	2,136
US	277,453	277,160	337,995	337,309	2,216	2,238

¹ Not published separately to avoid disclosing data for individual operations.

**Egg Production: By Type, State, and United States,
October 2008-09**

State	Total Production ¹		Table Eggs ²		Hatching Eggs ²	
	2008	2009 ³	2008	2009 ³	2008	2009
	<i>Million Eggs</i>	<i>Million Eggs</i>	<i>Million Eggs</i>	<i>Million Eggs</i>	<i>Million Eggs</i>	<i>Million Eggs</i>
AL	181	179	34	30	147	149
AR	261	244	91	83	170	161
CA	447	448				
CO	91	90				
CT	63	62				
FL	223	235	217	230	6	5
GA	383	377	214	209	169	168
HI	5.8	5.7	5.8	5.7	0	0
IL	128	111	125	108	3	3
IN	543	546	530	533	13	13
IA	1,238	1,242	1,221	1,228	17	14
ME	83	84				
MD	52	46	50	44	2	2
MI	233	237				
MN	236	238	228	230	8	8
MS	129	117	38	35	91	82
MO	153	163				
NE	233	233	233	233	0	0
NY	101	101				
NC	249	263	120	136	129	127
OH	615	646				
OR	61	60	59	58	2	2
PA	526	560	506	541	20	19
SC	92	101	69	78	23	23
SD	62	60	62	60	0	0
TX	430	404				
VA	59	69	29	33	30	36
WA	137	148				
WI	104	121				
Oth Sts ⁴	506	494	370	367	137	128
US ¹	7,625	7,685	6,538	6,626	1,088	1,060

¹ Totals may not add due to rounding.

² Data by type of flock not shown for some States to avoid disclosing individual operations, data included in US totals.

³ Revised.

⁴ Not published separately to avoid disclosing data for individual operations.

**Egg Production: By Type, State, and United States,
November 2008-09**

State	Total Production ¹		Table Eggs ²		Hatching Eggs ²	
	2008	2009	2008	2009	2008	2009
	<i>Million Eggs</i>	<i>Million Eggs</i>	<i>Million Eggs</i>	<i>Million Eggs</i>	<i>Million Eggs</i>	<i>Million Eggs</i>
AL	176	171	33	29	143	142
AR	247	239	85	79	162	160
CA	443	447				
CO	91	91				
CT	62	58				
FL	231	238	225	233	6	5
GA	380	379	217	217	163	162
HI	5.6	5.5	5.6	5.5	0	0
IL	130	106	127	103	3	3
IN	531	539	519	528	12	11
IA	1,204	1,208	1,189	1,195	15	13
ME	79	82				
MD	50	49	48	47	2	2
MI	230	234				
MN	227	235	219	226	8	9
MS	127	118	40	37	87	81
MO	148	158				
NE	221	223	221	223	0	0
NY	101	98				
NC	255	269	127	141	128	128
OH	603	624				
OR	61	56	59	54	2	2
PA	515	555	497	537	18	18
SC	93	97	70	75	23	22
SD	60	58	60	58	0	0
TX	423	389				
VA	58	68	29	31	29	37
WA	134	147				
WI	107	118				
Oth Sts ³	497	489	367	368	131	121
US ¹	7,490	7,549	6,446	6,521	1,044	1,027

¹ Totals may not add due to rounding.

² Data by type of flock not shown for some States to avoid disclosing individual operations, data included in US totals.

³ Not published separately to avoid disclosing data for individual operations.

**Forced Molt: Percent of All Layers by Month,
United States, 2008-09**

Month	Percent Being Molted ¹		Percent with Molt Completed ¹	
	2008	2009	2008	2009
	<i>Percent</i>	<i>Percent</i>	<i>Percent</i>	<i>Percent</i>
Jan	3.0	3.2	22.7	21.2
Feb	3.9	3.4	21.7	21.4
Mar	2.4	3.4	22.1	21.4
Apr	2.8	1.9	21.3	21.7
May	4.1	4.5	20.8	20.5
Jun	3.7	3.4	20.9	21.3
Jul	3.4	3.4	20.8	20.6
Aug	3.9	2.7	21.2	21.1
Sep	3.9	2.9	20.8	21.0
Oct	3.7	3.4	21.9	20.9
Nov ²	2.1	2.3	22.7	21.9
Dec	1.9	1.8	22.1	22.0

¹ As of first of month.

² Revised 2009 only.

**Forced Molt: Percent of All Layers by State
and United States, December 1, 2008-09**

State	Percent Being Molted ¹		Percent with Molt Completed ¹	
	2008	2009	2008	2009
	<i>Percent</i>	<i>Percent</i>	<i>Percent</i>	<i>Percent</i>
AL	0.5	0.5	6.5	8.0
AR	0.0	0.0	8.5	11.5
CA	1.0	1.0	34.5	34.0
CO	2.5	0.0	16.0	16.5
CT	0.0	0.0	18.5	6.0
FL	0.5	2.0	39.5	34.0
GA	1.5	1.0	11.5	20.0
HI	13.0	10.5	54.5	55.5
IL	0.0	0.0	33.0	31.5
IN	4.0	1.0	35.0	36.0
IA	4.0	3.5	33.0	30.5
ME	0.0	0.0	0.0	0.0
MD	4.0	0.0	8.5	10.5
MI	4.0	0.5	21.5	20.0
MN	1.5	2.5	25.5	28.5
MS	0.5	0.5	12.5	11.0
MO	0.0	1.0	7.5	22.5
NE	0.0	0.0	3.5	3.0
NY	0.5	1.0	7.0	6.5
NC	0.0	0.0	10.5	8.0
OH	2.5	4.0	18.0	19.5
OR	4.5	4.5	31.0	24.5
PA	0.0	2.5	10.5	13.0
SC	9.0	2.0	14.5	19.5
SD	6.5	6.0	30.5	20.5
TX	0.5	0.0	25.5	20.0
VA	0.0	0.0	17.5	15.0
WA	5.5	4.5	27.0	29.0
WI	3.5	4.0	25.5	32.0
Oth Sts ²	0.8	1.8	24.1	20.3
US	1.9	1.8	22.1	22.0

¹ As of first of month.

² Not published separately to avoid disclosing data for individual operations.

**Hatchery Production: Eggs in Incubators, Chicks Hatched,
and Placements by Type, United States, November-December 2008-09**

Item	2008	2009	2009 as % of 2008
	<i>1,000</i>	<i>1,000</i>	<i>Percent</i>
Egg-Type			
Eggs in Incubators on Dec 1	34,949	39,025	112
Chicks Hatched During Nov	34,187	34,897	102
Chicks Hatched Jan thru Nov	430,151	422,675	98
Pullets Hatched During Nov for Intended Placements in Hatchery Supply Flocks	317	290	91
7-18 Months Earlier ¹	2,940	3,060	104
Broiler-Type			
Eggs in Incubators on Dec 1	629,840	625,039	99
Chicks Hatched During Nov	705,312	704,208	100
Chicks Hatched Jan thru Nov	8,676,613	8,307,770	96
Pullets Hatched During Nov for Intended Placements in Hatchery Supply Flocks	7,026	7,262	103
7-15 Months Earlier ²	65,719	62,519	95

¹ 2009 includes pullet chicks hatched May 2008 through Apr 2009.

² 2009 includes pullet chicks hatched Aug 2008 through Apr 2009.

**Egg-Type Eggs in Incubators: By Region and United States,
December 1, 2008-09**

Region	2008	2009	2009 as % of 2008
	<i>1,000</i>	<i>1,000</i>	<i>Percent</i>
North Atlantic	5,160	5,289	103
E North Central	7,492	7,626	102
W North Central	8,243	9,298	113
South Atlantic	3,758	3,609	96
South Central	5,356	5,724	107
West	4,940	7,479	151
US	34,949	39,025	112

Egg-Type Chicks Hatched: By Month, United States, 2008-09

Month	By Months			Cumulative		
	2008	2009	2009 as % of 2008	2008	2009	2009 as % of 2008
	<i>1,000</i>	<i>1,000</i>	<i>Percent</i>	<i>1,000</i>	<i>1,000</i>	<i>Percent</i>
Jan	40,256	38,083	95	40,256	38,083	95
Feb	38,534	36,861	96	78,790	74,944	95
Mar	41,954	40,137	96	120,744	115,081	95
Apr	42,329	40,621	96	163,073	155,702	95
May	41,826	37,774	90	204,899	193,476	94
Jun	40,928	43,453	106	245,827	236,929	96
Jul	37,250	36,282	97	283,077	273,211	97
Aug	35,578	37,160	104	318,655	310,371	97
Sep	37,111	40,001	108	355,766	350,372	98
Oct	40,198	37,406	93	395,964	387,778	98
Nov	34,187	34,897	102	430,151	422,675	98
Dec	37,091			467,242		

**Intended Placements: Egg-Type Pullet Chicks for Hatchery Supply
Flocks by Month and Total, United States, 2008-09**

Month	Pullet Chicks Hatched		2009 as % of 2008	Cumulative Potential Plcmts Relative to Current Supply Flocks 7-18 Months Earlier ¹	
	2008	2009		2009	2010
	<i>1,000</i>	<i>1,000</i>	<i>Percent</i>	<i>1,000</i>	<i>1,000</i>
Jan	198	240	121	2,907	3,198
Feb	271	256	94	2,968	3,296
Mar	245	277	113	2,969	3,308
Apr	264	307	116	2,879	3,318
May	227	275	121	2,968	3,322
Jun	231	321	139	3,004	3,295
Jul	244	342	140	2,958	
Aug	279	291	104	3,000	
Sep	210	220	105	2,985	
Oct ²	273	277	101	3,017	
Nov	317	290	91	3,060	
Dec	199			3,108	
Total	2,958				

¹ For November 2009, includes breeder pullet chicks hatched May 2008 through Apr 2009. The 7-18 months represent the first laying cycle. Molting and additional laying cycles will increase the cumulative potential placements.

² Revision to 2009 pullet chicks hatched and cumulative potential placements for May 2010.

**Broiler-Type Eggs in Incubators: By Region
and United States, December 1, 2008-09**

Region	2008	2009	2009 as % of 2008
	<i>1,000</i>	<i>1,000</i>	<i>Percent</i>
North Atlantic	12,589	11,552	92
E North Central	11,426	12,084	106
W North Central	27,874	27,076	97
South Atlantic	232,061	230,464	99
South Central	322,414	322,406	100
West	23,476	21,457	91
US	629,840	625,039	99

**Broiler-Type Chicks Hatched: By State
and United States, November 2008-09**

State	During November			Jan-Nov		
	2008	2009	2009 as % of 2008	2008	2009	2009 as % of 2008
	<i>1,000</i>	<i>1,000</i>	<i>Percent</i>	<i>1,000</i>	<i>1,000</i>	<i>Percent</i>
AL	97,259	95,233	98	1,241,921	1,163,414	94
AR	82,651	78,144	95	1,051,892	942,121	90
DE	10,339	10,793	104	146,467	137,797	94
FL	4,378	4,393	100	53,217	41,136	77
GA	103,868	103,592	100	1,320,611	1,253,869	95
KY	25,364	25,938	102	305,355	303,388	99
LA	11,432	11,614	102	146,574	125,681	86
MD	29,450	31,389	107	348,082	350,718	101
MS	59,782	62,418	104	743,319	722,137	97
NC	65,630	64,032	98	761,328	736,024	97
OK	24,427	24,047	98	277,129	270,508	98
PA	12,307	12,421	101	163,485	150,554	92
SC	18,643	19,349	104	214,143	217,668	102
TX	50,950	52,890	104	611,268	615,478	101
VA	20,179	20,635	102	246,453	243,095	99
CA, MO, TN, & WV	65,293	62,497	96	775,947	763,033	98
19 Sts ¹	681,952	679,385	100	8,407,191	8,036,621	96
Oth Sts ²	23,360	24,823	106	269,422	271,149	101
US	705,312	704,208	100	8,676,613	8,307,770	96

¹ States in the weekly hatchery production estimating program.

² Not published separately to avoid disclosing data for individual operations.

Broiler-Type Chicks Hatched: By Month, United States, 2008-09

Month	By Months			Cumulative		
	2008	2009	2009 as % of 2008	2008	2009	2009 as % of 2008
	<i>1,000</i>	<i>1,000</i>	<i>Percent</i>	<i>1,000</i>	<i>1,000</i>	<i>Percent</i>
Jan	826,027	778,401	94	826,027	778,401	94
Feb	775,280	700,913	90	1,601,307	1,479,314	92
Mar	836,890	783,348	94	2,438,197	2,262,662	93
Apr	801,548	755,862	94	3,239,745	3,018,524	93
May	825,323	786,471	95	4,065,068	3,804,995	94
Jun	805,793	770,970	96	4,870,861	4,575,965	94
Jul	805,182	781,215	97	5,676,043	5,357,180	94
Aug	799,059	777,996	97	6,475,102	6,135,176	95
Sep	755,235	739,477	98	7,230,337	6,874,653	95
Oct	740,964	728,909	98	7,971,301	7,603,562	95
Nov	705,312	704,208	100	8,676,613	8,307,770	96
Dec	779,304			9,455,917		

**Intended Placements: Broiler-Type Pullet Chicks for Hatchery
Supply Flocks by Month and Total, 2008-09**

Month	Pullet Chicks Hatched		2009 as % of 2008	Cumulative Potential Plcmts Relative to Current Supply Flocks 7-15 Months Earlier ¹	
	2008	2009		2009	2010
	<i>1,000</i>	<i>1,000</i>	<i>Percent</i>	<i>1,000</i>	<i>1,000</i>
US Place- ments					
Jan	7,012	7,142	102	65,952	62,645
Feb	7,536	7,215	96	65,444	61,817
Mar	7,090	6,773	96	65,535	61,919
Apr	7,119	6,158	87	65,173	62,449
May	8,217	7,552	92	65,203	62,171
Jun	7,154	7,157	100	64,693	62,218
Jul	6,462	6,214	96	64,183	
Aug	7,697	7,128	93	64,206	
Sep	6,886	7,110	103	63,204	
Oct ²	7,042	6,864	97	62,823	
Nov	7,026	7,262	103	62,519	
Dec	6,580			62,374	
Annual Total	85,821				
Total Place- ments ³					
Jan	8,706	8,410	97		
Feb	9,498	8,524	90		
Mar	9,245	8,626	93		
Apr	8,720	7,664	88		
May	10,089	9,255	92		
Jun	9,228	8,830	96		
Jul	8,017	7,469	93		
Aug	9,603	8,813	92		
Sep	8,651	8,947	103		
Oct ⁴	8,361	8,288	99		
Nov	8,704	8,678	100		
Dec	8,197				
Annual Total	107,019				

¹ For Nov 2009, includes breeder pullet chicks hatched Aug 2008 through Apr 2009.

² Revised 2009 pullet chicks hatched and cumulative placements for May 2010.

³ U.S. production of intended placements worldwide.

⁴ Revised 2009 only.

Reliability of Chickens and Eggs Estimates

Survey Procedures: Primary data for the "**Chickens and Eggs**" report are from weekly and/or monthly questionnaires sent to producers. An attempt is made to collect information for layer and egg estimates from each known contractor and independent producer who has at least 30,000 table egg layers, flocks of hatchery supply layers, or pullet only operations with at least 500 pullets. Coverage for operations with less than 30,000 table egg layers are estimated each month based on data reported in December. Approximately 650 contractors, independent egg producers, and pullet only operations are contacted each month. All known hatcheries, approximately 300, are contacted for information on a weekly and/or monthly basis.

Estimating Procedures: Sound statistical methodology is employed to derive estimates from the reported data. All data are analyzed for unusual values. Data from each operation are compared to their own past operating profile and to trends from similar operations. Data for missing operations are estimated based on similar operations or historical data. NASS field offices prepare these estimates by using a combination of survey indications and historic trends. Individual State estimates are reviewed by the Agricultural Statistics Board for reasonableness. Individual hatchery data are summed to State, regional, and U.S. totals.

For chicken hatcheries, chicks hatched consist of all chicks of domesticated breeds including males and chicks destined for hatchery supply flocks and research purposes. Eggs set are eggs in incubators for the purpose of hatching. The relationship of egg-type chicks hatched to chicken inventory and poultry marketings are carefully monitored. The disposition of egg-type chicks hatched prior to placement into the laying flock can vary significantly, which can make comparisons to changes in layer inventory inconsistent over time. Broiler chicks placed are specifically placed on feed for meat production. Intended placement data reported by leading breeders include pullet chicks expected from eggs sold the preceding month. The breeders in this report account for a large percentage of replacement pullets for hatchery supply flocks. Production of replacement pullets by these breeders indicates the number of pullets available to hatchery supply layer flocks several months before the pullets will actually move into the laying flocks. "Hatchery Supply Flocks" include all generations of layers which could lay eggs to supply a hatchery. This includes the generations of parents, grandparents, great-grandparents, pedigree, etc. Also included are research flocks, vaccine flocks, and specific pathogen-free flocks. The broiler cumulative potential placements are a moving total of the intended placements 7-15 months earlier. The egg-type cumulative potential placements of 7-18 months earlier represent the first laying cycle. Molting and additional laying cycles will increase the cumulative potential placements of egg-type hatching flocks.

Revision Policy: The previous month's estimates are subject to revision if late reports or corrected data indicates a different level. Additionally, revisions after the monthly report will be made at the end of the marketing year and published in the annual reports of "**Chickens and Eggs Summary**" and "**Hatchery Production**".

Reliability: Estimates are based on a census of all known contractors and independent producers who have at least 30,000 table egg layers, flocks of hatchery supply layers, pullet only operations with at least 500 pullets, or operating hatcheries and therefore, have no sampling error. However, estimates are subject to errors such as omission, duplication, and mistakes in reporting, recording, and processing the data. While these errors cannot be measured directly, they are minimized through strict quality controls in the data collection process and a careful review of all reported data for consistency and reasonableness.

To assist in evaluating the reliability of the estimates in this report, the "Root Mean Square Error" is shown for selected items in the following table. The "Root Mean Square Error" is a statistical measure based on past performance and is computed using the differences between first and final estimates. The "Root Mean Square Error" for all layers over the past 24 months is 0.3 percent. This means that chances are 2 out of 3 that the final estimate will not be above or below the current estimate of 337 million layers by more than 0.3 percent. Chances are 9 out of 10 that the difference will not exceed 0.4 percent.

Reliability of Layer and Egg Estimates

Item	Root Mean Square Error	90 Percent Confidence Level		Difference Between First and Latest Estimates			Number of Months	
				Average	Smallest	Largest	First Above Latest	First Below Latest
				<i>1,000</i>	<i>1,000</i>	<i>1,000</i>	<i>Number</i>	<i>Number</i>
All Layers	0.3	0.4	15	433	2	3,473	14	10
Eggs	0.3	0.4	0	11	0	75	12	8

Regional Listing

North Atlantic: CT, ME, MA, NH, NJ, NY, PA, RI, VT.

East North Central: IL, IN, MI, OH, WI.

West North Central: IA, KS, MN, MO, NE, ND, SD.

South Atlantic: DE, FL, GA, MD, NC, SC, VA, WV.

South Central: AL, AR, KY, LA, MS, OK, TN, TX.

West: AK, AZ, CA, CO, HI, ID, MT, NM, NV, OR, UT, WA, WY.

Terms and Definitions of Chickens and Eggs Estimates

All Layers includes both table egg and hatching egg flocks regardless of size.

Intended Placements are reported by leading breeders. Coverage may not be 100 percent. Includes expected pullet chicks from eggs sold during the preceding month at the rate of 125 pullet chicks per case of 30 dozen eggs.

Information Contacts

Listed below are the commodity specialists in the Livestock Branch of the National Agricultural Statistics Service to contact for additional information.

- Dan Kerestes, Chief, Livestock Branch(202) 720-3570
- Bruce Boess, Head, Poultry and Specialty Commodities Section.....(202) 720-4447
- Doug Bounds - Poultry Slaughter, Turkey Hatchery, Turkeys Raised(202) 690-3237
- David Colwell - Cold Storage(202) 720-8784
- Chris Hawthorn - Catfish Processing, Catfish Production, Trout Production,
 Census of Aquaculture, Egg Products, Mink(202) 720-0585
- Kim Linonis - Layers, Eggs(202) 690-8632
- Troy Marshall - Broiler Hatchery, Chicken Hatchery, Honey(202) 720-3244

ACCESS TO REPORTS!!

For your convenience, there are several ways to obtain NASS reports, data products, and services:

INTERNET ACCESS

All NASS reports are available free of charge. For free access, connect to the Internet and go to the NASS Home Page at: www.nass.usda.gov.

E-MAIL SUBSCRIPTION

All NASS reports are available by subscription free of charge direct to your e-mail address. Starting with the NASS Home Page at www.nass.usda.gov, under the right navigation, *Receive reports by Email*, click on **National** or **State**. Follow the instructions on the screen.

PRINTED REPORTS OR DATA PRODUCTS

CALL OUR TOLL-FREE ORDER DESK: 800-999-6779 (U.S. and Canada)
Other areas, please call 703-605-6220 FAX: 703-605-6880
(Visa, MasterCard, check, or money order acceptable for payment.)

ASSISTANCE

For **assistance** with general agricultural statistics or further information about NASS or its products or services, contact the **Agricultural Statistics Hotline** at **800-727-9540**, 7:30 a.m. to 4:00 p.m. ET, or e-mail: nass@nass.usda.gov.

The U.S. Department of Agriculture (USDA) prohibits discrimination in all its programs and activities on the basis of race, color, national origin, age, disability, and where applicable, sex, marital status, familial status, parental status, religion, sexual orientation, genetic information, political beliefs, reprisal, or because all or a part of an individual's income is derived from any public assistance program. (Not all prohibited bases apply to all programs.) Persons with disabilities who require alternative means for communication of program information (Braille, large print, audiotape, etc.) should contact USDA's TARGET Center at (202) 720-2600 (voice and TDD).

To file a complaint of discrimination, write to USDA, Director, Office of Civil Rights, 1400 Independence Avenue, S.W., Washington, D.C. 20250-9410, or call (800) 795-3272 (voice) or (202) 720-6382 (TDD). USDA is an equal opportunity provider and employer.