

# Chickens and Eggs

---

Released January 22, 2010, by the National Agricultural Statistics Service (NASS), Agricultural Statistics Board, U.S. Department of Agriculture. For information on "Layers and Eggs" call Kim Linonis at (202) 690-8632, for "Chicks Hatched" call Troy Marshall at (202) 720-3244, office hours 7:30 a.m. to 4:00 p.m. ET.

## **December Egg Production Up 1 Percent**

U.S. egg production totaled 7.83 billion during December 2009, up 1 percent from last year. Production included 6.76 billion table eggs, and 1.07 billion hatching eggs, of which 995 million were broiler-type and 72 million were egg-type. The total number of layers during December 2009 averaged 340 million, down slightly from last year. December egg production per 100 layers was 2,304 eggs, up 1 percent from December 2009.

All layers in the U.S. on January 1, 2010 totaled 340 million, down slightly from last year. The 340 million layers consisted of 284 million layers producing table or market type eggs, 53.8 million layers producing broiler-type hatching eggs, and 2.94 million layers producing egg-type hatching eggs. Rate of lay per day on January 1, 2010, averaged 73.8 eggs per 100 layers, up 1 percent from January 1, 2009.

## **Egg-Type Chicks Hatched Up 7 Percent**

Egg-type chicks hatched during December 2009 totaled 39.7 million, up 7 percent from December 2008. Eggs in incubators totaled 38.9 million on January 1, 2010, up 6 percent from a year ago.

Domestic placements of egg-type pullet chicks for future hatchery supply flocks by leading breeders totaled 309 thousand during December 2009, up 55 percent from December 2008.

## **Broiler-Type Chicks Hatched Down Slightly**

Broiler-type chicks hatched during December 2009 totaled 778 million, down slightly from December 2008. Eggs in incubators totaled 633 million on January 1, 2010, up slightly from a year earlier.

Leading breeders placed 6.66 million broiler-type pullet chicks for future domestic hatchery supply flocks during December 2009, up 1 percent from December 2008.



## Contents

## Page

U.S. Average Number of Layers on Hand and Egg Production.....	1
U.S. Layers on Hand and Eggs Produced by Type, Forced Molt, and Pullets.....	3
Layers on Hand and Eggs Produced by State.....	5
Egg Production by Type and State .....	7
Forced Molt .....	9
U.S. Hatchery Production Summary .....	10
Egg-Type Hatchery .....	11
Egg-Type Intended Placements .....	12
Broiler-Type Hatchery .....	12
Broiler-Type Intended Placements .....	14
Reliability of Chickens and Eggs Estimates.....	15
Regional Listing .....	16
Terms and Definitions of Chickens and Eggs Estimates.....	16
Information Contacts.....	16

**All Layers: Average Number on Hand During the Month,  
United States, 2009-10**

Month	2009	2010
	<i>1,000 Layers</i>	<i>1,000 Layers</i>
Dec <sup>1</sup>	340,302	339,882
Jan	340,936	
Feb	340,614	
Mar	340,455	
Apr	339,745	
May	336,695	
Jun	333,388	
Jul	332,143	
Aug	332,291	
Sep	333,611	
Oct	335,361	
Nov <sup>2</sup>	337,702	

<sup>1</sup> December preceding year.

<sup>2</sup> Revised.

**Eggs: Production During the Month by Type,  
United States, 2009-10**

Month	Total Eggs <sup>1</sup>		Table Eggs		Hatching Eggs	
	2009	2010	2009	2010	2009	2010
	<i>Million Eggs</i>	<i>Million Eggs</i>	<i>Million Eggs</i>	<i>Million Eggs</i>	<i>Million Eggs</i>	<i>Million Eggs</i>
Dec <sup>2</sup>	7,768	7,831	6,701	6,763	1,068	1,067
Jan	7,666		6,591		1,075	
Feb	6,892		5,906		985	
Mar	7,724		6,632		1,093	
Apr	7,461		6,408		1,053	
May	7,597		6,505		1,092	
Jun	7,347		6,291		1,056	
Jul	7,575		6,494		1,081	
Aug	7,589		6,514		1,075	
Sep	7,371		6,341		1,030	
Oct	7,685		6,626		1,060	
Nov <sup>3</sup>	7,558		6,529		1,028	
During Year <sup>1</sup>	90,233		77,538		12,696	

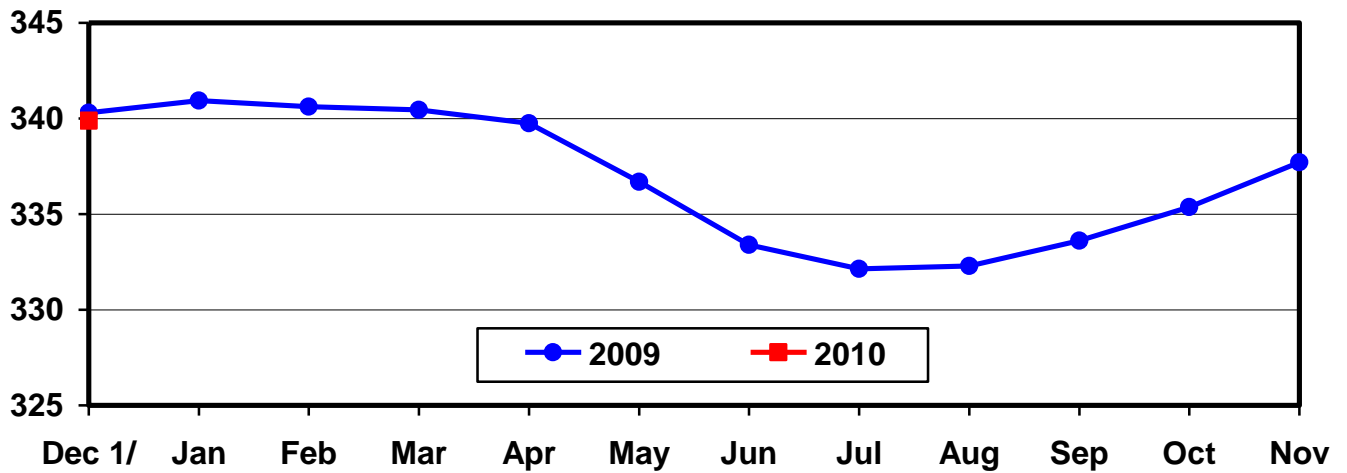
<sup>1</sup> Totals may not add due to rounding.

<sup>2</sup> December preceding year.

<sup>3</sup> Revised.

## U.S. Average Number of Layers During the Month

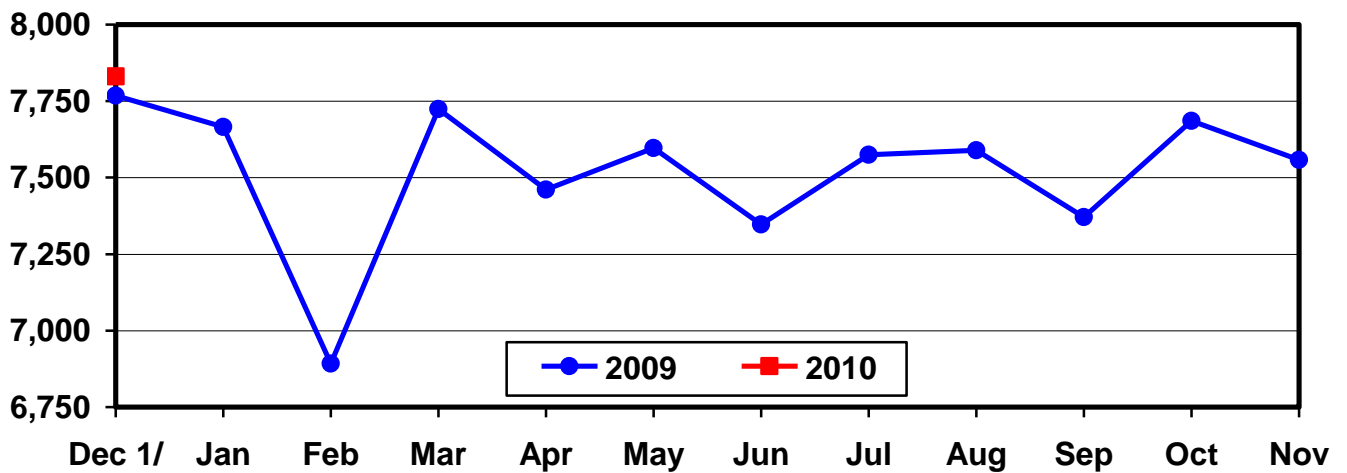
Million Layers



1/ Previous Year

## U.S. All Egg Production During the Month

Million Eggs



1/ Previous Year

**Layers and Eggs: Layers on Hand and Eggs Produced by Type,  
and Forced Molt, United States, November-December 2008-09**

Item	Unit	2008	2009 <sup>1</sup>	2009 as % of 2008
Layers During Nov <sup>2</sup>	1,000			
All Layers		337,995	337,702	100
Table Egg Type		281,780	282,011	100
Hatching Egg Type		56,215	55,691	99
Broiler-Type Hatching		53,409	52,790	99
Egg-Type Hatching		2,806	2,901	103
Eggs per 100 Layers During Nov	Number			
All Layers		2,216	2,238	101
Table Egg Type		2,288	2,315	101
Hatching Egg Type		1,857	1,846	99
Broiler-Type Hatching		1,833	1,820	99
Egg-Type Hatching		2,316	2,310	100
Eggs Produced During Nov <sup>2</sup>	Million			
All Layers		7,490	7,558	101
Table Egg Type		6,446	6,529	101
Hatching Egg Type		1,044	1,028	98
Broiler-Type Hatching		979	961	98
Egg-Type Hatching		65	67	103
Layers on Dec 1 <sup>2</sup>	1,000			
All Layers		339,643	339,341	100
Table Egg Type		284,022	283,199	100
Hatching Egg Type		55,621	56,142	101
Broiler-Type Hatching		52,873	53,239	101
Egg-Type Hatching		2,748	2,903	106
Eggs per 100 Layers on Dec 1	Number			
All Layers		74.2	74.8	101
Table Egg Type		76.6	77.5	101
Hatching Egg Type		61.8	61.0	99
Broiler-Type Hatching		61.2	60.1	98
Egg-Type Hatching		75.4	76.9	102
Forced Molt Layers on Dec 1	Percent			
Percent Being Molted		1.9	1.8	95
Percent with Molt Completed		22.1	22.0	100
Layers Sold for Slaughter During Nov	1,000	12,291	10,950	89
Layers Rendered, Died, Destroyed, Composted or Disappeared For Any Reason During Nov	1,000	5,598	6,528	117
Pullets on Dec 1	1,000	98,843	101,518	103
Pullets Added During Nov <sup>3</sup>	1,000	19,991	20,894	105

<sup>1</sup> Revised.

<sup>2</sup> Totals may not add due to rounding.

<sup>3</sup> Pullet chicks less than 3 days old added to pullet flocks.

**Layers and Eggs: Layers on Hand and Eggs Produced by Type,  
and Forced Molt, United States, December-January 2008-10**

Item	Unit	2008	2009	2009 as % of 2008
Layers During Dec <sup>1</sup>	1,000			
All Layers		340,302	339,882	100
Table Egg Type		284,274	283,435	100
Hatching Egg Type		56,028	56,447	101
Broiler-Type Hatching		53,229	53,520	101
Egg-Type Hatching		2,799	2,927	105
Eggs per 100 Layers During Dec	Number			
All Layers		2,283	2,304	101
Table Egg Type		2,357	2,386	101
Hatching Egg Type		1,906	1,890	99
Broiler-Type Hatching		1,881	1,859	99
Egg-Type Hatching		2,394	2,460	103
Eggs Produced During Dec <sup>1</sup>	Million			
All Layers		7,768	7,831	101
Table Egg Type		6,701	6,763	101
Hatching Egg Type		1,068	1,067	100
Broiler-Type Hatching		1,001	995	99
Egg-Type Hatching		67	72	107
		2009	2010	2010 as % of 2009
Layers on Jan 1 <sup>1</sup>	1,000			
All Layers		340,897	340,375	100
Table Egg Type		284,484	283,651	100
Hatching Egg Type		56,413	56,724	101
Broiler-Type Hatching		53,575	53,781	100
Egg-Type Hatching		2,838	2,943	104
Eggs per 100 Layers on Jan 1	Number			
All Layers		72.9	73.8	101
Table Egg Type		75.3	76.3	101
Hatching Egg Type		60.9	61.1	100
Broiler-Type Hatching		60.0	60.0	100
Egg-Type Hatching		79.0	80.6	102
Forced Molt Layers on Jan 1	Percent			
Percent Being Molted		3.2	2.7	84
Percent with Molt Completed		21.2	20.7	98
Layers Sold for Slaughter During Dec	1,000	12,015	12,462	104
Layers Rendered, Died, Destroyed, Composted or Disappeared For Any Reason During Dec	1,000	6,696	7,333	110
Pullets on Jan 1	1,000	99,721	103,415	104
Pullets Added During Dec <sup>2</sup>	1,000	21,208	23,551	111

<sup>1</sup> Totals may not add due to rounding.

<sup>2</sup> Pullet chicks less than 3 days old added to pullet flocks.

**Layers and Eggs: Layers on Hand and Eggs Produced by State  
and United States, During November 2008-09**

State	Table Egg Layers in Flocks 30,000 and Above		All Layers		Eggs per 100 for All Layers	
	2008	2009 <sup>1</sup>	2008	2009 <sup>1</sup>	2008	2009 <sup>1</sup>
	<i>1,000</i>	<i>1,000</i>	<i>1,000</i>	<i>1,000</i>	<i>Number</i>	<i>Number</i>
AL	1,380	1,284	9,345	9,059	1,883	1,888
AR	3,653	3,309	12,498	12,158	1,976	1,966
CA	19,877	19,094	20,182	19,391	2,195	2,305
CO	3,434	3,292	3,882	3,770	2,344	2,414
CT	2,699	2,496	2,758	2,559	2,248	2,267
FL	9,886	9,611	10,277	9,961	2,248	2,389
GA	9,503	9,084	18,167	17,629	2,092	2,150
HI	310	299	338	324	1,657	1,698
IL	5,319	4,418	5,531	4,629	2,350	2,290
IN	23,236	22,805	23,956	23,456	2,217	2,298
IA	52,287	53,201	53,204	54,061	2,263	2,235
ME	3,544	3,620	3,624	3,711	2,180	2,210
MD	2,193	2,101	2,360	2,251	2,119	2,177
MI	9,440	10,178	9,590	10,328	2,398	2,266
MN	9,546	9,865	10,030	10,359	2,263	2,269
MS	1,589	1,515	6,222	5,885	2,041	2,005
MO	5,647	5,744	6,778	6,950	2,184	2,273
NE	9,526	9,366	9,576	9,416	2,308	2,368
NY	3,970	3,860	4,188	4,084	2,412	2,400
NC	5,176	5,866	12,325	13,017	2,069	2,067
OH	26,519	27,100	26,940	27,558	2,238	2,264
OR	2,263	2,047	2,393	2,193	2,549	2,554
PA	20,548	22,039	21,635	23,151	2,380	2,393
SC	3,117	3,234	4,415	4,581	2,106	2,117
SD	2,417	2,404	2,467	2,444	2,432	2,373
TX	14,176	13,260	18,646	17,512	2,269	2,273
VA	1,307	1,264	2,869	3,244	2,022	2,096
WA	5,787	6,123	5,875	6,238	2,281	2,357
WI	4,172	4,341	4,651	4,895	2,301	2,431
Oth Sts <sup>2</sup>	14,932	14,722	23,273	22,888	2,136	2,136
US	277,453	277,542	337,995	337,702	2,216	2,238

<sup>1</sup> Revised.

<sup>2</sup> Not published separately to avoid disclosing data for individual operations.



**Layers and Eggs: Layers on Hand and Eggs Produced by State  
and United States, During December 2008-09**

State	Table Egg Layers in Flocks 30,000 and Above		All Layers		Eggs per 100 for All Layers	
	2008	2009	2008	2009	2008	2009
	<i>1,000</i>	<i>1,000</i>	<i>1,000</i>	<i>1,000</i>	<i>Number</i>	<i>Number</i>
AL	1,372	1,277	9,393	9,133	1,948	1,938
AR	3,688	3,233	12,790	12,226	2,002	2,028
CA	19,838	19,142	20,145	19,438	2,274	2,356
CO	3,507	3,189	3,955	3,701	2,478	2,513
CT	2,779	2,564	2,835	2,627	2,328	2,322
FL	9,955	9,784	10,340	10,127	2,331	2,400
GA	9,677	9,225	18,391	17,817	2,126	2,195
HI	311	276	338	311	1,775	1,768
IL	5,248	4,522	5,464	4,734	2,324	2,366
IN	23,552	22,869	24,247	23,539	2,310	2,362
IA	52,803	53,493	53,718	54,354	2,288	2,296
ME	3,517	3,672	3,601	3,763	2,222	2,365
MD	2,160	2,162	2,328	2,292	2,191	2,225
MI	9,437	10,082	9,594	10,232	2,460	2,404
MN	9,558	9,825	10,065	10,331	2,335	2,362
MS	1,577	1,513	6,045	6,115	2,068	2,028
MO	5,716	5,782	6,853	7,029	2,364	2,333
NE	9,685	9,455	9,735	9,505	2,404	2,441
NY	3,942	3,750	4,165	3,976	2,473	2,465
NC	5,373	6,039	12,520	13,226	2,109	2,132
OH	26,996	27,029	27,406	27,508	2,386	2,341
OR	2,386	2,003	2,513	2,138	2,587	2,572
PA	20,645	22,422	21,697	23,546	2,452	2,480
SC	3,099	3,195	4,420	4,480	2,195	2,165
SD	2,415	2,396	2,455	2,436	2,403	2,504
TX	14,066	13,706	18,311	17,998	2,294	2,328
UT <sup>1</sup>		3,346		3,376		2,370
VA	1,419	1,197	2,958	3,281	2,130	2,133
WA	5,817	6,149	5,932	6,264	2,411	2,411
WI	4,118	4,306	4,682	4,861	2,413	2,469
Oth Sts <sup>2</sup>	15,137	11,353	23,396	19,518	2,210	2,188
US	279,793	278,956	340,302	339,882	2,283	2,304

<sup>1</sup> Included in Oth Sts in 2008.

<sup>2</sup> Not published separately to avoid disclosing data for individual operations.

**Egg Production: By Type, State, and United States,  
November 2008-09**

State	Total Production <sup>1</sup>		Table Eggs <sup>2</sup>		Hatching Eggs <sup>2</sup>	
	2008	2009 <sup>3</sup>	2008	2009 <sup>3</sup>	2008	2009 <sup>3</sup>
	<i>Million Eggs</i>	<i>Million Eggs</i>	<i>Million Eggs</i>	<i>Million Eggs</i>	<i>Million Eggs</i>	<i>Million Eggs</i>
AL	176	171	33	29	143	142
AR	247	239	85	79	162	160
CA	443	447				
CO	91	91				
CT	62	58				
FL	231	238	225	233	6	5
GA	380	379	217	217	163	162
HI	5.6	5.5	5.6	5.5	0	0
IL	130	106	127	103	3	3
IN	531	539	519	528	12	11
IA	1,204	1,208	1,189	1,195	15	13
ME	79	82				
MD	50	49	48	47	2	2
MI	230	234				
MN	227	235	219	226	8	9
MS	127	118	40	37	87	81
MO	148	158				
NE	221	223	221	223	0	0
NY	101	98				
NC	255	269	127	141	128	128
OH	603	624				
OR	61	56	59	54	2	2
PA	515	554	497	536	18	18
SC	93	97	70	75	23	22
SD	60	58	60	58	0	0
TX	423	398				
VA	58	68	29	31	29	37
WA	134	147				
WI	107	119				
Oth Sts <sup>4</sup>	497	489	367	368	131	121
US <sup>1</sup>	7,490	7,558	6,446	6,529	1,044	1,028

<sup>1</sup> Totals may not add due to rounding.

<sup>2</sup> Data by type of flock not shown for some States to avoid disclosing individual operations, data included in US totals.

<sup>3</sup> Revised.

<sup>4</sup> Not published separately to avoid disclosing data for individual operations.

**Egg Production: By Type, State, and United States,  
December 2008-09**

State	Total Production <sup>1</sup>		Table Eggs <sup>2</sup>		Hatching Eggs <sup>2</sup>	
	2008	2009	2008	2009	2008	2009
	<i>Million Eggs</i>	<i>Million Eggs</i>	<i>Million Eggs</i>	<i>Million Eggs</i>	<i>Million Eggs</i>	<i>Million Eggs</i>
AL	183	177	34	30	149	147
AR	256	248	88	81	168	167
CA	458	458				
CO	98	93				
CT	66	61				
FL	241	243	235	237	6	6
GA	391	391	224	223	167	168
HI	6.0	5.5	6.0	5.5	0	0
IL	127	112	124	109	3	3
IN	560	556	547	544	13	12
IA	1,229	1,248	1,215	1,235	14	13
ME	80	89				
MD	51	51	49	50	2	1
MI	236	246				
MN	235	244	226	235	9	9
MS	125	124	39	38	86	86
MO	162	164				
NE	234	232	234	232	0	0
NY	103	98				
NC	264	282	131	149	133	133
OH	654	644				
OR	65	55	63	53	2	2
PA	532	584	515	564	17	20
SC	97	97	74	75	23	22
SD	59	61	59	61	0	0
TX	420	419				
UT <sup>3</sup>		80		80		0
VA	63	70	34	31	29	39
WA	143	151				
WI	113	120				
Oth Sts <sup>4</sup>	517	427	384	304	134	123
US <sup>1</sup>	7,768	7,831	6,701	6,763	1,068	1,067

<sup>1</sup> Totals may not add due to rounding.

<sup>2</sup> Data by type of flock not shown for some States to avoid disclosing individual operations, data included in US totals.

<sup>3</sup> Included in Oth Sts in 2008.

<sup>4</sup> Not published separately to avoid disclosing data for individual operations.

**Forced Molt: Percent of All Layers by Month,  
United States, 2009-10**

Month	Percent Being Molted <sup>1</sup>		Percent with Molt Completed <sup>1</sup>	
	2009	2010	2009	2010
	<i>Percent</i>	<i>Percent</i>	<i>Percent</i>	<i>Percent</i>
Jan	3.2	2.7	21.2	20.7
Feb	3.4		21.4	
Mar	3.4		21.4	
Apr	1.9		21.7	
May	4.5		20.5	
Jun	3.4		21.3	
Jul	3.4		20.6	
Aug	2.7		21.1	
Sep	2.9		21.0	
Oct	3.4		20.9	
Nov	2.3		21.9	
Dec	1.8		22.0	

<sup>1</sup> As of first of month.

**Forced Molt: Percent of All Layers by State  
and United States, January 1, 2009-10**

State	Percent Being Molted <sup>1</sup>		Percent with Molt Completed <sup>1</sup>	
	2009	2010	2009	2010
	<i>Percent</i>	<i>Percent</i>	<i>Percent</i>	<i>Percent</i>
AL	0.5	0.5	6.5	8.0
AR	1.5	1.0	8.0	10.0
CA	2.5	4.5	33.5	31.0
CO	4.5	4.0	17.5	14.5
CT	0.0	0.0	17.5	5.5
FL	4.5	9.0	37.5	31.5
GA	1.0	1.5	10.5	17.0
HI	11.5	5.5	55.5	51.5
IL	10.5	0.0	31.0	26.5
IN	3.5	3.0	34.5	34.0
IA	5.0	3.0	32.5	29.0
ME	0.0	0.0	0.0	0.0
MD	10.0	0.0	5.0	7.5
MI	6.0	5.0	22.0	21.0
MN	2.0	2.0	26.5	24.0
MS	2.0	2.0	10.0	9.0
MO	3.0	3.5	6.0	18.5
NE	0.0	0.0	3.5	2.5
NY	1.0	2.5	5.5	7.0
NC	2.0	2.0	10.0	7.0
OH	2.5	2.5	17.5	20.5
OR	5.5	5.0	30.0	26.5
PA	3.0	2.5	10.5	12.0
SC	3.0	2.0	15.5	19.5
SD	11.0	2.5	29.5	24.0
TX	3.5	1.0	19.5	17.5
UT <sup>2</sup>		9.5		30.5
VA	0.0	0.0	16.5	15.5
WA	4.0	3.5	28.5	29.5
WI	3.5	8.0	22.5	35.0
Oth Sts <sup>3</sup>	3.0	1.9	22.6	17.4
US	3.2	2.7	21.2	20.7

<sup>1</sup> As of first of month.

<sup>2</sup> Included in Oth Sts in 2009.

<sup>3</sup> Not published separately to avoid disclosing data for individual operations.

**Hatchery Production: Eggs in Incubators, Chicks Hatched,  
and Placements by Type, United States, December-January 2009-10**

Item	2009	2010	2010 as % of 2009
	<i>1,000</i>	<i>1,000</i>	<i>Percent</i>
Egg-Type			
Eggs in Incubators on Jan 1	36,665	38,929	106
Chicks Hatched During Dec <sup>1</sup>	37,091	39,655	107
Chicks Hatched Jan thru Dec <sup>1</sup>	467,242	462,330	99
Pullets Hatched During Dec for Intended Placements in Hatchery Supply Flocks <sup>1</sup>	199	309	155
7-18 Month Earlier <sup>1 2</sup>	2,976	3,108	104
Broiler-Type			
Eggs in Incubators on Jan 1	630,209	632,926	100
Chicks Hatched During Dec <sup>1</sup>	779,304	778,372	100
Chicks Hatched Jan thru Dec <sup>1</sup>	9,455,917	9,086,142	96
Pullets Hatched During Dec for Intended Placements in Hatchery Supply Flocks <sup>1</sup>	6,580	6,656	101
7-15 Months Earlier <sup>1 3</sup>	66,144	62,374	94

<sup>1</sup> Previous year.

<sup>2</sup> 2010 includes pullet chicks hatched Jun 2008 through May 2009.

<sup>3</sup> 2010 includes pullet chicks hatched Sep 2008 through May 2009.

**Egg-Type Eggs in Incubators: By Region and United States,  
January 1, 2009-10**

Region	2009	2010	2010 as % of 2009
	<i>1,000</i>	<i>1,000</i>	<i>Percent</i>
North Atlantic	5,379	5,645	105
E North Central	7,518	7,514	100
W North Central	7,985	7,939	99
South Atlantic	3,729	4,261	114
South Central	6,116	5,896	96
West	5,938	7,674	129
US	36,665	38,929	106

**Egg-Type Chicks Hatched: By Month, United States, 2008-09**

Month	By Months			Cumulative		
	2008	2009	2009 as % of 2008	2008	2009	2009 as % of 2008
	<i>1,000</i>	<i>1,000</i>	<i>Percent</i>	<i>1,000</i>	<i>1,000</i>	<i>Percent</i>
Jan	40,256	38,083	95	40,256	38,083	95
Feb	38,534	36,861	96	78,790	74,944	95
Mar	41,954	40,137	96	120,744	115,081	95
Apr	42,329	40,621	96	163,073	155,702	95
May	41,826	37,774	90	204,899	193,476	94
Jun	40,928	43,453	106	245,827	236,929	96
Jul	37,250	36,282	97	283,077	273,211	97
Aug	35,578	37,160	104	318,655	310,371	97
Sep	37,111	40,001	108	355,766	350,372	98
Oct	40,198	37,406	93	395,964	387,778	98
Nov	34,187	34,897	102	430,151	422,675	98
Dec	37,091	39,655	107	467,242	462,330	99

**Intended Placements: Egg-Type Pullet Chicks for Hatchery Supply  
Flocks by Month and Total, United States, 2008-09**

Month	Pullet Chicks Hatched		2009 as % of 2008	Cumulative Potential Plcmts Relative to Current Supply Flocks 7-18 Months Earlier <sup>1</sup>	
	2008	2009		2009	2010
	<i>1,000</i>	<i>1,000</i>	<i>Percent</i>	<i>1,000</i>	<i>1,000</i>
Jan	198	240	121	2,907	3,198
Feb	271	256	94	2,968	3,296
Mar	245	277	113	2,969	3,308
Apr	264	307	116	2,879	3,318
May	227	275	121	2,968	3,322
Jun	231	321	139	3,004	3,295
Jul	244	342	140	2,958	3,405
Aug	279	291	104	3,000	
Sep	210	220	105	2,985	
Oct	273	277	101	3,017	
Nov	317	290	91	3,060	
Dec	199	309	155	3,108	
Total	2,958	3,405	115		

<sup>1</sup> For December 2009, includes breeder pullet chicks hatched Jun 2008 through May 2009. The 7-18 months represent the first laying cycle. Molting and additional laying cycles will increase the cumulative potential placements.

**Broiler-Type Eggs in Incubators: By Region  
and United States, January 1, 2009-10**

Region	2009	2010	2010 as % of 2009
	<i>1,000</i>	<i>1,000</i>	<i>Percent</i>
North Atlantic	11,931	11,378	95
E North Central	11,324	12,866	114
W North Central	29,104	28,044	96
South Atlantic	233,580	232,302	99
South Central	320,269	326,940	102
West	24,001	21,396	89
US	630,209	632,926	100

**Broiler-Type Chicks Hatched: By State  
and United States, December 2008-09**

State	During December			Jan-Dec		
	2008	2009	2009 as % of 2008	2008	2009	2009 as % of 2008
	<i>1,000</i>	<i>1,000</i>	<i>Percent</i>	<i>1,000</i>	<i>1,000</i>	<i>Percent</i>
AL	109,321	108,444	99	1,351,242	1,271,858	94
AR	92,277	88,619	96	1,144,169	1,030,740	90
DE	12,213	12,393	101	158,680	150,190	95
FL	4,698	4,808	102	57,915	45,944	79
GA	117,499	114,450	97	1,438,110	1,368,319	95
KY	28,783	29,268	102	334,138	332,656	100
LA	13,023	12,789	98	159,597	138,470	87
MD	32,184	32,286	100	380,266	383,004	101
MS	64,880	69,919	108	808,199	792,056	98
NC	68,905	69,864	101	830,233	805,888	97
OK	24,377	25,865	106	301,506	296,373	98
PA	15,237	14,130	93	178,722	164,684	92
SC	20,096	20,366	101	234,239	238,034	102
TX	56,325	58,554	104	667,593	674,032	101
VA	22,487	22,812	101	268,940	265,907	99
CA, MO, TN, & WV	71,333	68,275	96	847,280	831,308	98
19 Sts <sup>1</sup>	753,638	752,842	100	9,160,829	8,789,463	96
Oth Sts <sup>2</sup>	25,666	25,530	99	295,088	296,679	101
US	779,304	778,372	100	9,455,917	9,086,142	96

<sup>1</sup> States in the weekly hatchery production estimating program.

<sup>2</sup> Not published separately to avoid disclosing data for individual operations.

**Broiler-Type Chicks Hatched: By Month, United States, 2008-09**

Month	By Months			Cumulative		
	2008	2009	2009 as % of 2008	2008	2009	2009 as % of 2008
	<i>1,000</i>	<i>1,000</i>	<i>Percent</i>	<i>1,000</i>	<i>1,000</i>	<i>Percent</i>
Jan	826,027	778,401	94	826,027	778,401	94
Feb	775,280	700,913	90	1,601,307	1,479,314	92
Mar	836,890	783,348	94	2,438,197	2,262,662	93
Apr	801,548	755,862	94	3,239,745	3,018,524	93
May	825,323	786,471	95	4,065,068	3,804,995	94
Jun	805,793	770,970	96	4,870,861	4,575,965	94
Jul	805,182	781,215	97	5,676,043	5,357,180	94
Aug	799,059	777,996	97	6,475,102	6,135,176	95
Sep	755,235	739,477	98	7,230,337	6,874,653	95
Oct	740,964	728,909	98	7,971,301	7,603,562	95
Nov	705,312	704,208	100	8,676,613	8,307,770	96
Dec	779,304	778,372	100	9,455,917	9,086,142	96



**Intended Placements: Broiler-Type Pullet Chicks for Hatchery  
Supply Flocks by Month and Total, 2008-09**

Month	Pullet Chicks Hatched		2009 as % of 2008	Cumulative Potential Plcmts Relative to Current Supply Flocks 7-15 Months Earlier <sup>1</sup>	
	2008	2009		2009	2010
	<i>1,000</i>	<i>1,000</i>	<i>Percent</i>	<i>1,000</i>	<i>1,000</i>
US Place- ments					
Jan	7,012	7,142	102	65,952	62,645
Feb	7,536	7,215	96	65,444	61,817
Mar	7,090	6,773	96	65,535	61,919
Apr	7,119	6,158	87	65,173	62,449
May	8,217	7,552	92	65,203	62,171
Jun	7,154	7,157	100	64,693	62,218
Jul	6,462	6,214	96	64,183	62,101
Aug	7,697	7,128	93	64,206	
Sep	6,886	7,110	103	63,204	
Oct	7,042	6,864	97	62,823	
Nov	7,026	7,262	103	62,519	
Dec	6,580	6,656	101	62,374	
Annual Total	85,821	83,231	97		
Total Place- ments <sup>2</sup>					
Jan	8,706	8,410	97		
Feb	9,498	8,524	90		
Mar	9,245	8,626	93		
Apr	8,720	7,664	88		
May	10,089	9,255	92		
Jun	9,228	8,830	96		
Jul	8,017	7,469	93		
Aug	9,603	8,813	92		
Sep	8,651	8,947	103		
Oct	8,361	8,288	99		
Nov	8,704	8,678	100		
Dec	8,197	8,275	101		
Annual Total	107,019	101,779	95		

<sup>1</sup> For Dec 2009, includes breeder pullet chicks hatched Sep 2008 through May 2009.

<sup>2</sup> U.S. production of intended placements worldwide.

## Reliability of Chickens and Eggs Estimates

**Survey Procedures:** Primary data for the "**Chickens and Eggs**" report are from weekly and/or monthly questionnaires sent to producers. An attempt is made to collect information for layer and egg estimates from each known contractor and independent producer who has at least 30,000 table egg layers, flocks of hatchery supply layers, or pullet only operations with at least 500 pullets. Coverage for operations with less than 30,000 table egg layers are estimated each month based on data reported in December. Approximately 650 contractors, independent egg producers, and pullet only operations are contacted each month. All known hatcheries, approximately 300, are contacted for information on a weekly and/or monthly basis.

**Estimating Procedures:** Sound statistical methodology is employed to derive estimates from the reported data. All data are analyzed for unusual values. Data from each operation are compared to their own past operating profile and to trends from similar operations. Data for missing operations are estimated based on similar operations or historical data. NASS field offices prepare these estimates by using a combination of survey indications and historic trends. Individual State estimates are reviewed by the Agricultural Statistics Board for reasonableness. Individual hatchery data are summed to State, regional, and U.S. totals.

For chicken hatcheries, chicks hatched consist of all chicks of domesticated breeds including males and chicks destined for hatchery supply flocks and research purposes. Eggs set are eggs in incubators for the purpose of hatching. The relationship of egg-type chicks hatched to chicken inventory and poultry marketings are carefully monitored. The disposition of egg-type chicks hatched prior to placement into the laying flock can vary significantly, which can make comparisons to changes in layer inventory inconsistent over time. Broiler chicks placed are specifically placed on feed for meat production. Intended placement data reported by leading breeders include pullet chicks expected from eggs sold the preceding month. The breeders in this report account for a large percentage of replacement pullets for hatchery supply flocks. Production of replacement pullets by these breeders indicates the number of pullets available to hatchery supply layer flocks several months before the pullets will actually move into the laying flocks. "Hatchery Supply Flocks" include all generations of layers which could lay eggs to supply a hatchery. This includes the generations of parents, grandparents, great-grandparents, pedigree, etc. Also included are research flocks, vaccine flocks, and specific pathogen-free flocks. The broiler cumulative potential placements are a moving total of the intended placements 7-15 months earlier. The egg-type cumulative potential placements of 7-18 months earlier represent the first laying cycle. Molting and additional laying cycles will increase the cumulative potential placements of egg-type hatching flocks.

**Revision Policy:** The previous month's estimates are subject to revision if late reports or corrected data indicates a different level. Additionally, revisions after the monthly report will be made at the end of the marketing year and published in the annual reports of "**Chickens and Eggs Summary**" and "**Hatchery Production**".

**Reliability:** Estimates are based on a census of all known contractors and independent producers who have at least 30,000 table egg layers, flocks of hatchery supply layers, pullet only operations with at least 500 pullets, or operating hatcheries and therefore, have no sampling error. However, estimates are subject to errors such as omission, duplication, and mistakes in reporting, recording, and processing the data. While these errors cannot be measured directly, they are minimized through strict quality controls in the data collection process and a careful review of all reported data for consistency and reasonableness.

To assist in evaluating the reliability of the estimates in this report, the "Root Mean Square Error" is shown for selected items in the following table. The "Root Mean Square Error" is a statistical measure based on past performance and is computed using the differences between first and final estimates. The "Root Mean Square Error" for all layers over the past 24 months is 0.2 percent. This means that chances are 2 out of 3 that the final estimate will not be above or below the current estimate of 340 million layers by more than 0.2 percent. Chances are 9 out of 10 that the difference will not exceed 0.3 percent.

**Reliability of Layer and Egg Estimates**

Item	Root Mean Square Error	90 Percent Confidence Level		Difference Between First and Latest Estimates			Number of Months	
				Average	Smallest	Largest	First Above Latest	First Below Latest
All Layers	<i>Percent</i> 0.2	<i>Percent</i> 0.3	<i>1,000</i> 9	<i>1,000</i> 305	<i>1,000</i> 2	<i>1,000</i> 2,136	<i>Number</i> 14	<i>Number</i> 10
Eggs	0.2	0.3	<i>Million Eggs</i> 0	<i>Million Eggs</i> 8	<i>Million Eggs</i> 0	<i>Million Eggs</i> 45	12	8

**Regional Listing**

North Atlantic: CT, ME, MA, NH, NJ, NY, PA, RI, VT.

East North Central: IL, IN, MI, OH, WI.

West North Central: IA, KS, MN, MO, NE, ND, SD.

South Atlantic: DE, FL, GA, MD, NC, SC, VA, WV.

South Central: AL, AR, KY, LA, MS, OK, TN, TX.

West: AK, AZ, CA, CO, HI, ID, MT, NM, NV, OR, UT, WA, WY.

**Terms and Definitions of Chickens and Eggs Estimates**

**All Layers** includes both table egg and hatching egg flocks regardless of size.

**Intended Placements** are reported by leading breeders. Coverage may not be 100 percent. Includes expected pullet chicks from eggs sold during the preceding month at the rate of 125 pullet chicks per case of 30 dozen eggs.

**Information Contacts**

Listed below are the commodity specialists in the Livestock Branch of the National Agricultural Statistics Service to contact for additional information.

- Dan Kerestes, Chief, Livestock Branch .....(202) 720-3570
- Bruce Boess, Head, Poultry and Specialty Commodities Section.....(202) 720-4447
- Doug Bounds - Poultry Slaughter, Turkey Hatchery, Turkeys Raised .....(202) 690-3237
- David Colwell - Cold Storage .....(202) 720-8784
- Chris Hawthorn - Catfish Processing, Catfish Production, Trout Production,  
        Census of Aquaculture, Egg Products, Mink .....(202) 720-0585
- Kim Linonis - Layers, Eggs .....(202) 690-8632
- Troy Marshall - Broiler Hatchery, Chicken Hatchery, Honey .....(202) 720-3244

## ACCESS TO REPORTS!!

---

For your convenience, there are several ways to obtain NASS reports, data products, and services:

### INTERNET ACCESS

All NASS reports are available free of charge. For free access, connect to the Internet and go to the NASS Home Page at: [www.nass.usda.gov](http://www.nass.usda.gov).

### E-MAIL SUBSCRIPTION

All NASS reports are available by subscription free of charge direct to your e-mail address. Starting with the NASS Home Page at [www.nass.usda.gov](http://www.nass.usda.gov), under the right navigation, *Receive reports by Email*, click on **National** or **State**. Follow the instructions on the screen.

-----

### PRINTED REPORTS OR DATA PRODUCTS

**CALL OUR TOLL-FREE ORDER DESK: 800-999-6779 (U.S. and Canada)**  
**Other areas, please call 703-605-6220      FAX: 703-605-6880**  
**(Visa, MasterCard, check, or money order acceptable for payment.)**

-----

### ASSISTANCE

For **assistance** with general agricultural statistics or further information about NASS or its products or services, contact the **Agricultural Statistics Hotline** at **800-727-9540**, 7:30 a.m. to 4:00 p.m. ET, or e-mail: [nass@nass.usda.gov](mailto:nass@nass.usda.gov).

The U.S. Department of Agriculture (USDA) prohibits discrimination in all its programs and activities on the basis of race, color, national origin, age, disability, and where applicable, sex, marital status, familial status, parental status, religion, sexual orientation, genetic information, political beliefs, reprisal, or because all or a part of an individual's income is derived from any public assistance program. (Not all prohibited bases apply to all programs.) Persons with disabilities who require alternative means for communication of program information (Braille, large print, audiotape, etc.) should contact USDA's TARGET Center at (202) 720-2600 (voice and TDD).

To file a complaint of discrimination, write to USDA, Director, Office of Civil Rights, 1400 Independence Avenue, S.W., Washington, D.C. 20250-9410, or call (800) 795-3272 (voice) or (202) 720-6382 (TDD). USDA is an equal opportunity provider and employer.