

Chickens and Eggs

Released February 26, 2010, by the National Agricultural Statistics Service (NASS), Agricultural Statistics Board, U.S. Department of Agriculture. For information on "Layers and Eggs" call Kim Linonis at (202) 690-8632, for "Chicks Hatched" call Troy Marshall at (202) 720-3244, office hours 7:30 a.m. to 4:00 p.m. ET.

January Egg Production Up Slightly

U.S. egg production totaled 7.69 billion during January 2010, up slightly from last year. Production included 6.61 billion table eggs, and 1.08 billion hatching eggs, of which 1.01 billion were broiler-type and 75 million were egg-type. The total number of layers during January 2010 averaged 339 million, down 1 percent from last year. January egg production per 100 layers was 2,268 eggs, up 1 percent from January 2009.

All layers in the U.S. on February 1, 2010 totaled 338 million, down 1 percent from last year. The 338 million layers consisted of 281 million layers producing table or market type eggs, 54.5 million layers producing broiler-type hatching eggs, and 2.96 million layers producing egg-type hatching eggs. Rate of lay per day on February 1, 2010, averaged 72.5 eggs per 100 layers, up 1 percent from February 1, 2009.

Egg-Type Chicks Hatched Up 2 Percent

Egg-type chicks hatched during January 2010 totaled 38.8 million, up 2 percent from January 2009. Eggs in incubators totaled 39.3 million on February 1, 2010, up 12 percent from a year ago.

Domestic placements of egg-type pullet chicks for future hatchery supply flocks by leading breeders totaled 227 thousand during January 2010, down 5 percent from January 2009.

Broiler-Type Chicks Hatched Down Slightly

Broiler-type chicks hatched during January 2010 totaled 776 million, down slightly from January 2009. Eggs in incubators totaled 628 million on February 1, 2010, up 1 percent from a year earlier.

Leading breeders placed 7.22 million broiler-type pullet chicks for future domestic hatchery supply flocks during January 2010, up 1 percent from January 2009.

Contents

Page

U.S. Average Number of Layers on Hand and Egg Production.....	1
U.S. Layers on Hand and Eggs Produced by Type, Forced Molt, and Pullets.....	3
Layers on Hand and Eggs Produced by State.....	5
Egg Production by Type and State	7
Forced Molt	9
U.S. Hatchery Production Summary	10
Egg-Type Hatchery	11
Egg-Type Intended Placements	12
Broiler-Type Hatchery	12
Broiler-Type Intended Placements.....	14
Reliability of Chickens and Eggs Estimates.....	15
Regional Listing	16
Terms and Definitions of Chickens and Eggs Estimates.....	16
Information Contacts.....	16

**All Layers: Average Number on Hand During the Month,
United States, 2009-10**

Month	2009	2010
	<i>1,000 Layers</i>	<i>1,000 Layers</i>
Dec ^{1 2}	340,638	339,744
Jan	341,400	339,173
Feb	341,068	
Mar	340,914	
Apr	340,170	
May	337,116	
Jun	334,032	
Jul	332,740	
Aug	332,612	
Sep	333,885	
Oct	335,819	
Nov	338,121	

¹ December preceding year.

² Revised 2010 only.

**Eggs: Production During the Month by Type,
United States, 2009-10**

Month	Total Eggs ¹		Table Eggs		Hatching Eggs	
	2009	2010	2009	2010	2009	2010
	<i>Million Eggs</i>	<i>Million Eggs</i>	<i>Million Eggs</i>	<i>Million Eggs</i>	<i>Million Eggs</i>	<i>Million Eggs</i>
Dec ^{2 3}	7,778	7,827	6,711	6,758	1,068	1,068
Jan	7,678	7,692	6,603	6,610	1,075	1,082
Feb	6,903		5,917		985	
Mar	7,737		6,645		1,093	
Apr	7,472		6,419		1,053	
May	7,607		6,515		1,092	
Jun	7,360		6,301		1,059	
Jul	7,590		6,505		1,085	
Aug	7,593		6,518		1,075	
Sep	7,376		6,349		1,027	
Oct	7,696		6,638		1,059	
Nov	7,569		6,541		1,027	
During Year ¹	90,359		77,664		12,698	

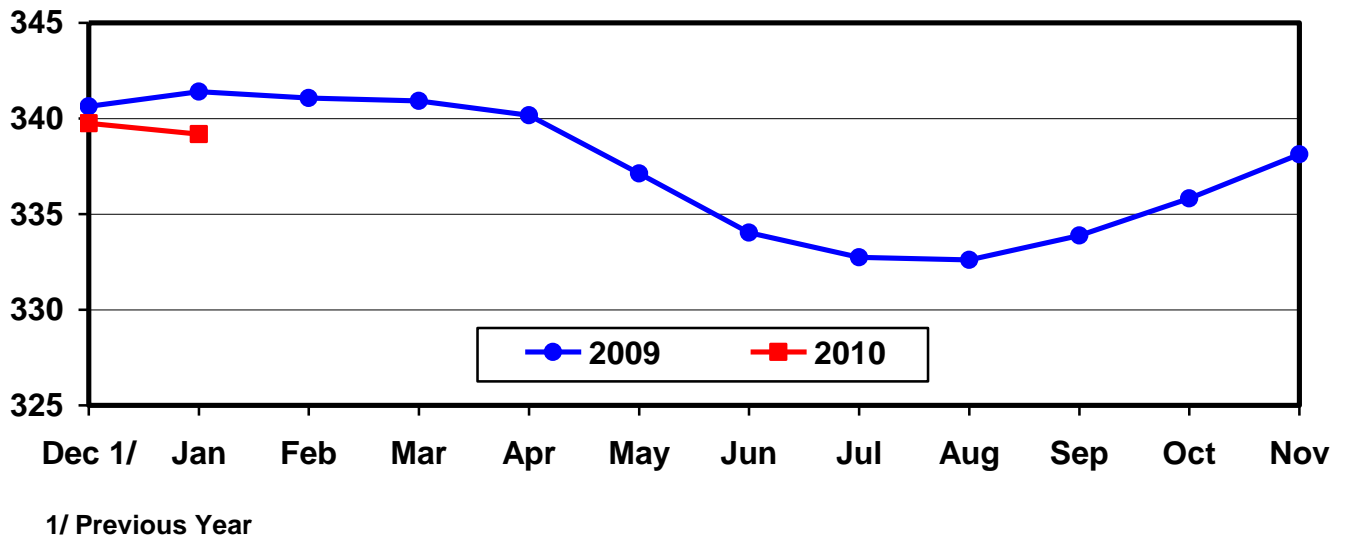
¹ Totals may not add due to rounding.

² December preceding year.

³ Revised 2010 only.

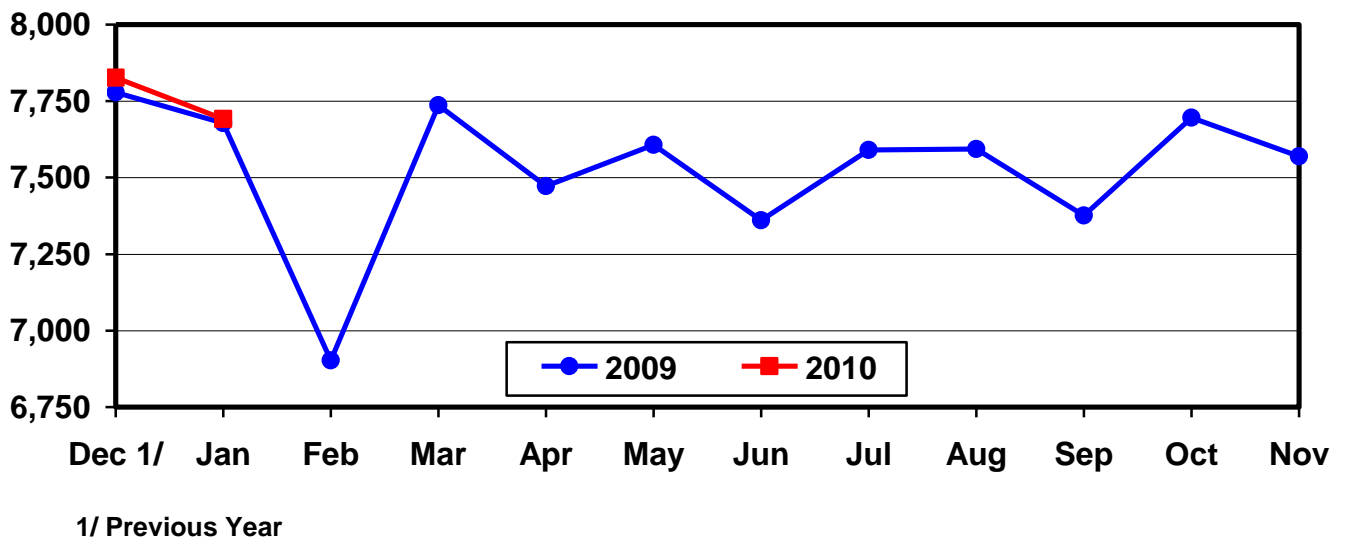
U.S. Average Number of Layers During the Month

Million Layers



U.S. All Egg Production During the Month

Million Eggs



**Layers and Eggs: Layers on Hand and Eggs Produced by Type,
and Forced Molt, United States, December-January 2008-10**

Item	Unit	2008	2009 ¹	2009 as % of 2008
Layers During Dec ²	1,000			
All Layers		340,638	339,744	100
Table Egg Type		284,610	283,314	100
Hatching Egg Type		56,028	56,430	101
Broiler-Type Hatching		53,229	53,498	101
Egg-Type Hatching		2,799	2,932	105
Eggs per 100 Layers During Dec	Number			
All Layers		2,283	2,304	101
Table Egg Type		2,358	2,385	101
Hatching Egg Type		1,906	1,893	99
Broiler-Type Hatching		1,881	1,862	99
Egg-Type Hatching		2,394	2,456	103
Eggs Produced During Dec ²	Million			
All Layers		7,778	7,827	101
Table Egg Type		6,711	6,758	101
Hatching Egg Type		1,068	1,068	100
Broiler-Type Hatching		1,001	996	100
Egg-Type Hatching		67	72	107
		2009	2010 ¹	2010 as % of 2009
Layers on Jan 1 ²	1,000			
All Layers		341,373	339,894	100
Table Egg Type		284,960	283,138	99
Hatching Egg Type		56,413	56,756	101
Broiler-Type Hatching		53,575	53,807	100
Egg-Type Hatching		2,838	2,949	104
Eggs per 100 Layers on Jan 1	Number			
All Layers		73.0	73.8	101
Table Egg Type		75.3	76.3	101
Hatching Egg Type		60.9	61.2	100
Broiler-Type Hatching		60.0	60.2	100
Egg-Type Hatching		79.0	80.6	102
Forced Molt Layers on Jan 1	Percent			
Percent Being Molted		3.3	2.7	82
Percent with Molt Completed		21.3	20.6	97
Layers Sold for Slaughter During Dec	1,000	12,032	12,805	106
Layers Rendered, Died, Destroyed, Composted or Disappeared For Any Reason During Dec	1,000	6,738	7,328	109
Pullets on Jan 1	1,000	100,311	103,331	103
Pullets Added During Dec ³	1,000	21,464	23,783	111

¹ Revised.

² Totals may not add due to rounding.

³ Pullet chicks less than 3 days old added to pullet flocks.

**Layers and Eggs: Layers on Hand and Eggs Produced by Type,
and Forced Molt, United States, January-February 2009-10**

Item	Unit	2009	2010	2010 as % of 2009
Layers During Jan ¹	1,000			
All Layers		341,400	339,173	99
Table Egg Type		284,457	282,039	99
Hatching Egg Type		56,943	57,134	100
Broiler-Type Hatching		54,002	54,176	100
Egg-Type Hatching		2,941	2,958	101
Eggs per 100 Layers During Jan	Number			
All Layers		2,249	2,268	101
Table Egg Type		2,321	2,344	101
Hatching Egg Type		1,888	1,894	100
Broiler-Type Hatching		1,857	1,859	100
Egg-Type Hatching		2,448	2,535	104
Eggs Produced During Jan ¹	Million			
All Layers		7,678	7,692	100
Table Egg Type		6,603	6,610	100
Hatching Egg Type		1,075	1,082	101
Broiler-Type Hatching		1,003	1,007	100
Egg-Type Hatching		72	75	104
Layers on Feb 1 ¹	1,000			
All Layers		341,388	338,418	99
Table Egg Type		283,939	280,924	99
Hatching Egg Type		57,449	57,494	100
Broiler-Type Hatching		54,415	54,533	100
Egg-Type Hatching		3,034	2,961	98
Eggs per 100 Layers on Feb 1	Number			
All Layers		72.1	72.5	101
Table Egg Type		74.4	74.8	101
Hatching Egg Type		60.7	60.8	100
Broiler-Type Hatching		59.7	59.7	100
Egg-Type Hatching		78.9	81.8	104
Forced Molt Layers on Feb 1	Percent			
Percent Being Molted		3.4	3.6	106
Percent with Molt Completed		21.6	20.2	94
Layers Sold for Slaughter During Jan	1,000	14,101	13,765	98
Layers Rendered, Died, Destroyed, Composted or Disappeared For Any Reason During Jan	1,000	6,748	7,475	111
Pullets on Feb 1	1,000	101,422	102,251	101
Pullets Added During Jan ²	1,000	22,670	20,426	90

¹ Totals may not add due to rounding.

² Pullet chicks less than 3 days old added to pullet flocks.

**Layers and Eggs: Layers on Hand and Eggs Produced by State
and United States, During December 2008-09**

State	Table Egg Layers in Flocks 30,000 and Above		All Layers		Eggs per 100 for All Layers	
	2008	2009 ¹	2008	2009 ¹	2008	2009 ¹
	<i>1,000</i>	<i>1,000</i>	<i>1,000</i>	<i>1,000</i>	<i>Number</i>	<i>Number</i>
AL	1,372	1,277	9,393	9,133	1,948	1,938
AR	3,688	3,225	12,790	12,234	2,002	2,027
CA	19,838	19,163	20,145	19,461	2,274	2,353
CO	3,507	3,189	3,955	3,701	2,478	2,513
CT	2,779	2,564	2,835	2,632	2,328	2,318
FL	9,955	9,784	10,340	10,127	2,331	2,400
GA	9,677	9,225	18,391	17,817	2,126	2,195
HI	311	276	338	311	1,775	1,768
IL	4,675	4,560	4,891	4,782	2,310	2,363
IN	23,552	22,869	24,247	23,539	2,310	2,362
IA	52,803	53,612	53,718	54,475	2,288	2,296
ME	3,517	3,561	3,601	3,652	2,222	2,355
MD	2,160	2,212	2,328	2,342	2,191	2,220
MI	9,437	10,082	9,594	10,232	2,460	2,404
MN	9,557	9,825	10,064	10,331	2,335	2,362
MS	1,577	1,513	6,045	6,115	2,068	2,028
MO	5,716	5,782	6,853	7,029	2,364	2,333
NE	9,685	9,455	9,735	9,505	2,404	2,441
NY	3,942	3,750	4,165	3,976	2,473	2,465
NC	5,373	6,050	12,520	13,186	2,109	2,139
OH	26,996	27,029	27,406	27,508	2,386	2,341
OR	2,386	2,003	2,513	2,138	2,587	2,572
PA	20,702	22,422	21,754	23,542	2,455	2,481
SC	3,099	3,195	4,420	4,483	2,195	2,164
SD	2,415	2,396	2,455	2,436	2,403	2,504
TX	14,924	13,706	19,169	17,998	2,301	2,328
UT ²		3,272		3,302		2,362
VA	1,419	1,197	2,958	3,281	2,130	2,133
WA	5,817	6,058	5,932	6,173	2,411	2,414
WI	4,118	4,306	4,682	4,861	2,413	2,469
Oth Sts ³	15,162	11,274	23,401	19,442	2,214	2,186
US	280,159	278,832	340,638	339,744	2,283	2,304

¹ Revised.

² Included in Oth Sts in 2008.

³ Not published separately to avoid disclosing data for individual operations.

**Layers and Eggs: Layers on Hand and Eggs Produced by State
and United States, During January 2009-10**

State	Table Egg Layers in Flocks 30,000 and Above		All Layers		Eggs per 100 for All Layers	
	2009	2010	2009	2010	2009	2010
	<i>1,000</i>	<i>1,000</i>	<i>1,000</i>	<i>1,000</i>	<i>Number</i>	<i>Number</i>
AL	1,384	1,232	9,405	9,170	1,914	1,908
AR	3,575	3,197	12,923	12,299	1,989	1,976
CA	19,630	19,031	19,938	19,331	2,242	2,318
CO	3,456	3,044	3,971	3,589	2,493	2,508
CT	2,729	2,518	2,786	2,585	2,297	2,321
FL	9,829	9,831	10,173	10,153	2,261	2,295
GA	9,479	9,020	18,303	17,702	2,098	2,169
HI	312	264	339	309	1,770	1,845
IL	4,572	4,430	4,788	4,650	2,214	2,387
IN	23,521	22,995	24,219	23,712	2,279	2,324
IA	52,819	53,688	53,753	54,558	2,275	2,256
ME	3,538	3,529	3,622	3,602	2,126	2,388
MD	2,055	2,121	2,199	2,229	2,092	2,288
MI	9,437	10,067	9,601	10,225	2,458	2,367
MN	9,621	9,811	10,127	10,295	2,311	2,351
MS	1,509	1,450	5,967	6,162	2,028	1,980
MO	5,889	5,749	7,184	7,053	2,325	2,311
NE	9,623	9,473	9,673	9,523	2,409	2,426
NY	3,824	3,715	4,047	3,941	2,471	2,487
NC	5,461	6,067	12,638	13,183	2,089	2,101
OH	27,102	26,554	27,527	27,045	2,300	2,292
OR	2,341	1,952	2,479	2,074	2,622	2,555
PA	21,104	22,480	22,208	23,589	2,432	2,471
SC	3,169	3,221	4,486	4,477	2,140	2,100
SD	2,455	2,346	2,495	2,386	2,365	2,473
TX	14,876	13,680	19,250	18,204	2,244	2,263
UT ¹		3,313		3,343		2,273
VA	1,425	1,140	3,003	3,311	2,031	2,024
WA	5,932	6,267	6,047	6,382	2,398	2,303
WI	4,194	4,166	4,773	4,721	2,305	2,394
Oth Sts ²	15,145	11,196	23,476	19,370	2,177	2,189
US	280,006	277,547	341,400	339,173	2,249	2,268

¹ Included in Oth Sts in 2009.

² Not published separately to avoid disclosing data for individual operations.

**Egg Production: By Type, State, and United States,
December 2008-09**

State	Total Production ¹		Table Eggs ²		Hatching Eggs ²	
	2008	2009 ³	2008	2009 ³	2008	2009 ³
	<i>Million Eggs</i>	<i>Million Eggs</i>	<i>Million Eggs</i>	<i>Million Eggs</i>	<i>Million Eggs</i>	<i>Million Eggs</i>
AL	183	177	34	30	149	147
AR	256	248	88	81	168	167
CA	458	458				
CO	98	93				
CT	66	61				
FL	241	243	235	237	6	6
GA	391	391	224	223	167	168
HI	6.0	5.5	6.0	5.5	0	0
IL	113	113	110	110	3	3
IN	560	556	547	544	13	12
IA	1,229	1,251	1,215	1,238	14	13
ME	80	86				
MD	51	52	49	51	2	1
MI	236	246				
MN	235	244	226	235	9	9
MS	125	124	39	38	86	86
MO	162	164				
NE	234	232	234	232	0	0
NY	103	98				
NC	264	282	131	149	133	133
OH	654	644				
OR	65	55	63	53	2	2
PA	534	584	517	564	17	20
SC	97	97	74	75	23	22
SD	59	61	59	61	0	0
TX	441	419				
UT ⁴		78		78		0
VA	63	70	34	31	29	39
WA	143	149				
WI	113	120				
Oth Sts ⁵	518	425	385	301	134	124
US ¹	7,778	7,827	6,711	6,758	1,068	1,068

¹ Totals may not add due to rounding.

² Data by type of flock not shown for some States to avoid disclosing individual operations, data included in US totals.

³ Revised.

⁴ Included in Oth Sts in 2008.

⁵ Not published separately to avoid disclosing data for individual operations.

**Egg Production: By Type, State, and United States,
January 2009-10**

State	Total Production ¹		Table Eggs ²		Hatching Eggs ²	
	2009	2010	2009	2010	2009	2010
	<i>Million Eggs</i>	<i>Million Eggs</i>	<i>Million Eggs</i>	<i>Million Eggs</i>	<i>Million Eggs</i>	<i>Million Eggs</i>
AL	180	175	32	27	148	148
AR	257	243	87	78	170	165
CA	447	448				
CO	99	90				
CT	64	60				
FL	230	233	225	228	5	5
GA	384	384	215	215	169	169
HI	6.0	5.7	6.0	5.7	0	0
IL	106	111	103	108	3	3
IN	552	551	539	538	13	13
IA	1,223	1,231	1,208	1,217	15	14
ME	77	86				
MD	46	51	44	50	2	1
MI	236	242				
MN	234	242	225	233	9	9
MS	121	122	37	35	84	87
MO	167	163				
NE	233	231	233	231	0	0
NY	100	98				
NC	264	277	134	144	130	133
OH	633	620				
OR	65	53	63	51	2	2
PA	540	583	520	562	20	21
SC	96	94	72	72	24	22
SD	59	59	59	59	0	0
TX	432	412				
UT ³		76		76		0
VA	61	67	32	27	29	40
WA	145	147				
WI	110	113				
Oth Sts ⁴	511	424	377	295	134	129
US ¹	7,678	7,692	6,603	6,610	1,075	1,082

¹ Totals may not add due to rounding.

² Data by type of flock not shown for some States to avoid disclosing individual operations, data included in US totals.

³ Included in Oth Sts in 2009.

⁴ Not published separately to avoid disclosing data for individual operations.

**Forced Molt: Percent of All Layers by Month,
United States, 2009-10**

Month	Percent Being Molted ¹		Percent with Molt Completed ¹	
	2009	2010	2009	2010
	<i>Percent</i>	<i>Percent</i>	<i>Percent</i>	<i>Percent</i>
Jan ²	3.3	2.7	21.3	20.6
Feb	3.4	3.6	21.6	20.2
Mar	3.4		21.5	
Apr	2.1		21.8	
May	4.5		20.7	
Jun	3.4		21.4	
Jul	3.4		20.8	
Aug	2.7		21.4	
Sep	2.9		21.2	
Oct	3.5		21.1	
Nov	2.3		21.9	
Dec	1.8		22.2	

¹ As of first of month.

² Revised 2010 only.

**Forced Molt: Percent of All Layers by State
and United States, February 1, 2009-10**

State	Percent Being Molted ¹		Percent with Molt Completed ¹	
	2009	2010	2009	2010
	<i>Percent</i>	<i>Percent</i>	<i>Percent</i>	<i>Percent</i>
AL	1.5	0.5	7.0	7.0
AR	1.5	1.0	8.0	10.5
CA	4.0	7.0	29.5	27.5
CO	5.0	1.5	18.5	17.0
CT	8.0	3.5	16.5	5.5
FL	7.0	8.0	32.5	33.5
GA	4.5	1.0	10.5	16.5
HI	10.5	9.5	55.0	48.5
IL	8.5	5.0	30.0	23.0
IN	4.0	4.0	36.5	32.0
IA	2.5	4.0	36.0	30.5
ME	0.0	0.0	0.0	0.0
MD	22.0	15.5	7.5	7.0
MI	1.0	4.0	29.0	22.5
MN	2.5	2.5	26.0	23.5
MS	2.0	3.5	11.0	7.5
MO	2.0	4.0	8.5	20.0
NE	0.0	1.0	2.5	2.5
NY	1.0	2.0	6.0	8.0
NC	0.0	2.0	12.0	8.5
OH	4.5	5.0	17.5	14.5
OR	2.0	4.5	30.0	28.5
PA	2.5	2.0	10.5	12.0
SC	8.5	0.0	11.5	18.0
SD	6.5	2.5	34.0	21.0
TX	4.5	3.5	18.5	18.0
UT ²		11.0		34.0
VA	0.0	3.0	11.0	15.0
WA	6.5	6.0	28.0	29.0
WI	0.0	5.0	23.5	36.0
Oth Sts ³	4.2	3.3	21.6	15.7
US	3.4	3.6	21.6	20.2

¹ As of first of month.

² Included in Oth Sts in 2009.

³ Not published separately to avoid disclosing data for individual operations.

**Hatchery Production: Eggs in Incubators, Chicks Hatched,
and Placements by Type, United States, January-February 2009-10**

Item	2009	2010	2010 as % of 2009
	<i>1,000</i>	<i>1,000</i>	<i>Percent</i>
Egg-Type			
Eggs in Incubators on Feb 1	35,198	39,338	112
Chicks Hatched During Jan	38,083	38,794	102
Chicks Hatched Jan thru Jan	38,083	38,794	102
Pullets Hatched During Jan for Intended Placements in Hatchery Supply Flocks	240	227	95
7-18 Months Earlier ¹	3,007	2,907	97
Broiler-Type			
Eggs in Incubators on Feb 1	623,584	627,804	101
Chicks Hatched During Jan	778,401	775,615	100
Chicks Hatched Jan thru Jan	778,401	775,615	100
Pullets Hatched During Jan for Intended Placements in Hatchery Supply Flocks	7,142	7,219	101
7-15 Months Earlier ²	65,333	65,952	101

¹ 2010 includes pullet chicks hatched Jul 2008 through Jun 2009.

² 2010 includes pullet chicks hatched Oct 2008 through Jun 2009.

**Egg-Type Eggs in Incubators: By Region and United States,
February 1, 2009-10**

Region	2009	2010	2010 as % of 2009
	<i>1,000</i>	<i>1,000</i>	<i>Percent</i>
North Atlantic	5,222	4,945	95
E North Central	7,037	7,687	109
W North Central	8,482	8,657	102
South Atlantic	4,186	4,876	116
South Central	5,625	5,957	106
West	4,646	7,216	155
US	35,198	39,338	112

Egg-Type Chicks Hatched: By Month, United States, 2009-10

Month	By Months			Cumulative		
	2009	2010	2010 as % of 2009	2009	2010	2010 as % of 2009
	<i>1,000</i>	<i>1,000</i>	<i>Percent</i>	<i>1,000</i>	<i>1,000</i>	<i>Percent</i>
Jan	38,083	38,794	102	38,083	38,794	102
Feb	36,861			74,944		
Mar	40,137			115,081		
Apr	40,621			155,702		
May	37,774			193,476		
Jun	43,453			236,929		
Jul	36,282			273,211		
Aug	37,160			310,371		
Sep	40,001			350,372		
Oct	37,406			387,778		
Nov	34,897			422,675		
Dec	39,655			462,330		

**Intended Placements: Egg-Type Pullet Chicks for Hatchery Supply
Flocks by Month and Total, United States, 2009-10**

Month	Pullet Chicks Hatched		2010 as % of 2009	Cumulative Potential Plcmts Relative to Current Supply Flocks 7-18 Months Earlier ¹	
	2009	2010		2009	2010
	<i>1,000</i>	<i>1,000</i>	<i>Percent</i>	<i>1,000</i>	<i>1,000</i>
Jan	240	227	95	2,907	3,198
Feb	256			2,968	3,296
Mar	277			2,969	3,308
Apr	307			2,879	3,318
May	275			2,968	3,322
Jun	321			3,004	3,295
Jul	342			2,958	3,405
Aug	291			3,000	3,392
Sep	220			2,985	
Oct	277			3,017	
Nov	290			3,060	
Dec	309			3,108	
Total	3,405				

¹ For January 2010, includes breeder pullet chicks hatched Jul 2008 through Jun 2009. The 7-18 months represent the first laying cycle. Molting and additional laying cycles will increase the cumulative potential placements.

**Broiler-Type Eggs in Incubators: By Region
and United States, February 1, 2009-10**

Region	2009	2010	2010 as % of 2009
	<i>1,000</i>	<i>1,000</i>	<i>Percent</i>
North Atlantic	11,811	11,485	97
E North Central	11,436	12,570	110
W North Central	27,937	27,783	99
South Atlantic	232,117	230,539	99
South Central	318,343	323,696	102
West	21,940	21,731	99
US	623,584	627,804	101

**Broiler-Type Chicks Hatched: By State
and United States, January 2009-10**

State	During January			Jan-Jan		
	2009	2010	2010 as % of 2009	2009	2010	2010 as % of 2009
	<i>1,000</i>	<i>1,000</i>	<i>Percent</i>	<i>1,000</i>	<i>1,000</i>	<i>Percent</i>
AL	108,270	109,127	101	108,270	109,127	101
AR	90,672	89,402	99	90,672	89,402	99
DE	12,360	12,250	99	12,360	12,250	99
FL	3,871	4,647	120	3,871	4,647	120
GA	121,074	114,428	95	121,074	114,428	95
KY	27,937	29,106	104	27,937	29,106	104
LA	12,992	12,444	96	12,992	12,444	96
MD	32,553	32,923	101	32,553	32,923	101
MS	65,269	69,750	107	65,269	69,750	107
NC	69,749	68,897	99	69,749	68,897	99
OK	24,307	25,422	105	24,307	25,422	105
PA	14,251	13,975	98	14,251	13,975	98
SC	20,111	20,172	100	20,111	20,172	100
TX	57,257	56,554	99	57,257	56,554	99
VA	22,121	22,468	102	22,121	22,468	102
CA, MO, TN, & WV	72,171	68,414	95	72,171	68,414	95
19 Sts ¹	754,965	749,979	99	754,965	749,979	99
Oth Sts ²	23,436	25,636	109	23,436	25,636	109
US	778,401	775,615	100	778,401	775,615	100

¹ States in the weekly hatchery production estimating program.

² Not published separately to avoid disclosing data for individual operations.

Broiler-Type Chicks Hatched: By Month, United States, 2009-10

Month	By Months			Cumulative		
	2009	2010	2010 as % of 2009	2009	2010	2010 as % of 2009
	<i>1,000</i>	<i>1,000</i>	<i>Percent</i>	<i>1,000</i>	<i>1,000</i>	<i>Percent</i>
Jan	778,401	775,615	100	778,401	775,615	100
Feb	700,913			1,479,314		
Mar	783,348			2,262,662		
Apr	755,862			3,018,524		
May	786,471			3,804,995		
Jun	770,970			4,575,965		
Jul	781,215			5,357,180		
Aug	777,996			6,135,176		
Sep	739,477			6,874,653		
Oct	728,909			7,603,562		
Nov	704,208			8,307,770		
Dec	778,372			9,086,142		

**Intended Placements: Broiler-Type Pullet Chicks for Hatchery
Supply Flocks by Month and Total, 2009-10**

Month	Pullet Chicks Hatched		2010 as % of 2009	Cumulative Potential Plcmts Relative to Current Supply Flocks 7-15 Months Earlier ¹	
	2009	2010		2009	2010
	<i>1,000</i>	<i>1,000</i>	<i>Percent</i>	<i>1,000</i>	<i>1,000</i>
US Place- ments					
Jan	7,142	7,219	101	65,952	62,645
Feb	7,215			65,444	61,817
Mar	6,773			65,535	61,919
Apr	6,158			65,173	62,449
May	7,552			65,203	62,171
Jun	7,157			64,693	62,218
Jul	6,214			64,183	62,072
Aug	7,128			64,206	63,133
Sep	7,110			63,204	
Oct	6,864			62,823	
Nov	7,262			62,519	
Dec ²	6,627			62,374	
Annual Total	83,202				
Total Place- ments ³					
Jan	8,410	8,626	103		
Feb	8,524				
Mar	8,626				
Apr	7,664				
May	9,255				
Jun	8,830				
Jul	7,469				
Aug	8,813				
Sep	8,947				
Oct	8,288				
Nov	8,678				
Dec ⁴	8,400				
Annual Total	101,904				

¹ For Jan 2010, includes breeder pullet chicks hatched Oct 2008 through Jun 2009.

² Revised 2009 pullet chicks hatched and cumulative placements for July 2010.

³ U.S. production of intended placements worldwide.

⁴ Revised 2009.

Reliability of Chickens and Eggs Estimates

Survey Procedures: Primary data for the "**Chickens and Eggs**" report are from weekly and/or monthly questionnaires sent to producers. An attempt is made to collect information for layer and egg estimates from each known contractor and independent producer who has at least 30,000 table egg layers, flocks of hatchery supply layers, or pullet only operations with at least 500 pullets. Coverage for operations with less than 30,000 table egg layers are estimated each month based on data reported in December. Approximately 650 contractors, independent egg producers, and pullet only operations are contacted each month. All known hatcheries, approximately 300, are contacted for information on a weekly and/or monthly basis.

Estimating Procedures: Sound statistical methodology is employed to derive estimates from the reported data. All data are analyzed for unusual values. Data from each operation are compared to their own past operating profile and to trends from similar operations. Data for missing operations are estimated based on similar operations or historical data. NASS field offices prepare these estimates by using a combination of survey indications and historic trends. Individual State estimates are reviewed by the Agricultural Statistics Board for reasonableness. Individual hatchery data are summed to State, regional, and U.S. totals.

For chicken hatcheries, chicks hatched consist of all chicks of domesticated breeds including males and chicks destined for hatchery supply flocks and research purposes. Eggs set are eggs in incubators for the purpose of hatching. The relationship of egg-type chicks hatched to chicken inventory and poultry marketings are carefully monitored. The disposition of egg-type chicks hatched prior to placement into the laying flock can vary significantly, which can make comparisons to changes in layer inventory inconsistent over time. Broiler chicks placed are specifically placed on feed for meat production. Intended placement data reported by leading breeders include pullet chicks expected from eggs sold the preceding month. The breeders in this report account for a large percentage of replacement pullets for hatchery supply flocks. Production of replacement pullets by these breeders indicates the number of pullets available to hatchery supply layer flocks several months before the pullets will actually move into the laying flocks. "Hatchery Supply Flocks" include all generations of layers which could lay eggs to supply a hatchery. This includes the generations of parents, grandparents, great-grandparents, pedigree, etc. Also included are research flocks, vaccine flocks, and specific pathogen-free flocks. The broiler cumulative potential placements are a moving total of the intended placements 7-15 months earlier. The egg-type cumulative potential placements of 7-18 months earlier represent the first laying cycle. Molting and additional laying cycles will increase the cumulative potential placements of egg-type hatching flocks.

Revision Policy: The previous month's estimates are subject to revision if late reports or corrected data indicates a different level. Additionally, revisions after the monthly report will be made at the end of the marketing year and published in the annual reports of "**Chickens and Eggs Summary**" and "**Hatchery Production**".

Reliability: Estimates are based on a census of all known contractors and independent producers who have at least 30,000 table egg layers, flocks of hatchery supply layers, pullet only operations with at least 500 pullets, or operating hatcheries and therefore, have no sampling error. However, estimates are subject to errors such as omission, duplication, and mistakes in reporting, recording, and processing the data. While these errors cannot be measured directly, they are minimized through strict quality controls in the data collection process and a careful review of all reported data for consistency and reasonableness.

To assist in evaluating the reliability of the estimates in this report, the "Root Mean Square Error" is shown for selected items in the following table. The "Root Mean Square Error" is a statistical measure based on past performance and is computed using the differences between first and final estimates. The "Root Mean Square Error" for all layers over the past 24 months is 0.2 percent. This means that chances are 2 out of 3 that the final estimate will not be above or below the current estimate of 339 million layers by more than 0.2 percent. Chances are 9 out of 10 that the difference will not exceed 0.3 percent.

Reliability of Layer and Egg Estimates

Item	Root Mean Square Error	90 Percent Confidence Level		Difference Between First and Latest Estimates			Number of Months	
				Average	Smallest	Largest	First Above Latest	First Below Latest
All Layers	<i>Percent</i> 0.2	<i>Percent</i> 0.3	<i>1,000</i> 9	<i>1,000</i> 474	<i>1,000</i> 138	<i>1,000</i> 934	<i>Number</i> 12	<i>Number</i> 12
Eggs	0.2	0.3	<i>Million Eggs</i> 0	<i>Million Eggs</i> 12	<i>Million Eggs</i> 0	<i>Million Eggs</i> 30	11	12

Regional Listing

North Atlantic: CT, ME, MA, NH, NJ, NY, PA, RI, VT.

East North Central: IL, IN, MI, OH, WI.

West North Central: IA, KS, MN, MO, NE, ND, SD.

South Atlantic: DE, FL, GA, MD, NC, SC, VA, WV.

South Central: AL, AR, KY, LA, MS, OK, TN, TX.

West: AK, AZ, CA, CO, HI, ID, MT, NM, NV, OR, UT, WA, WY.

Terms and Definitions of Chickens and Eggs Estimates

All Layers includes both table egg and hatching egg flocks regardless of size.

Intended Placements are reported by leading breeders. Coverage may not be 100 percent. Includes expected pullet chicks from eggs sold during the preceding month at the rate of 125 pullet chicks per case of 30 dozen eggs.

Information Contacts

Listed below are the commodity specialists in the Livestock Branch of the National Agricultural Statistics Service to contact for additional information.

Dan Kerestes, Chief, Livestock Branch(202) 720-3570

Bruce Boess, Head, Poultry and Specialty Commodities Section.....(202) 720-4447

Doug Bounds - Poultry Slaughter, Turkey Hatchery, Turkeys Raised(202) 690-3237

David Colwell - Cold Storage(202) 720-8784

Chris Hawthorn - Catfish Processing, Catfish Production, Trout Production,
Census of Aquaculture, Egg Products, Mink(202) 720-0585

Kim Linonis - Layers, Eggs(202) 690-8632

Troy Marshall - Broiler Hatchery, Chicken Hatchery, Honey(202) 720-3244

ACCESS TO REPORTS!!

For your convenience, there are several ways to obtain NASS reports, data products, and services:

INTERNET ACCESS

All NASS reports are available free of charge. For free access, connect to the Internet and go to the NASS Home Page at: www.nass.usda.gov.

E-MAIL SUBSCRIPTION

All NASS reports are available by subscription free of charge direct to your e-mail address. Starting with the NASS Home Page at www.nass.usda.gov, under the right navigation, *Receive reports by Email*, click on **National** or **State**. Follow the instructions on the screen.

PRINTED REPORTS OR DATA PRODUCTS

CALL OUR TOLL-FREE ORDER DESK: 800-999-6779 (U.S. and Canada)
Other areas, please call 703-605-6220 FAX: 703-605-6880
(Visa, MasterCard, check, or money order acceptable for payment.)

ASSISTANCE

For **assistance** with general agricultural statistics or further information about NASS or its products or services, contact the **Agricultural Statistics Hotline** at **800-727-9540**, 7:30 a.m. to 4:00 p.m. ET, or e-mail: nass@nass.usda.gov.

The U.S. Department of Agriculture (USDA) prohibits discrimination in all its programs and activities on the basis of race, color, national origin, age, disability, and where applicable, sex, marital status, familial status, parental status, religion, sexual orientation, genetic information, political beliefs, reprisal, or because all or a part of an individual's income is derived from any public assistance program. (Not all prohibited bases apply to all programs.) Persons with disabilities who require alternative means for communication of program information (Braille, large print, audiotape, etc.) should contact USDA's TARGET Center at (202) 720-2600 (voice and TDD).

To file a complaint of discrimination, write to USDA, Director, Office of Civil Rights, 1400 Independence Avenue, S.W., Washington, D.C. 20250-9410, or call (800) 795-3272 (voice) or (202) 720-6382 (TDD). USDA is an equal opportunity provider and employer.