

# Chickens and Eggs

---

Released May 21, 2010, by the National Agricultural Statistics Service (NASS), Agricultural Statistics Board, U.S. Department of Agriculture. For information on "Layers and Eggs" call Kim Linonis at (202) 690-8632, for "Chicks Hatched" call Troy Marshall at (202) 720-3244, office hours 7:30 a.m. to 4:00 p.m. ET.

## April Egg Production Up 1 Percent

U.S. egg production totaled 7.55 billion during April 2010, up 1 percent from last year. Production included 6.47 billion table eggs, and 1.08 billion hatching eggs, of which 1.00 billion were broiler-type and 74 million were egg-type. The total number of layers during April 2010 averaged 340 million, down slightly from last year. April egg production per 100 layers was 2,220 eggs, up 1 percent from April 2009.

All layers in the U.S. on May 1, 2010 totaled 338 million, down slightly from last year. The 338 million layers consisted of 279 million layers producing table or market type eggs, 56.2 million layers producing broiler-type hatching eggs, and 2.99 million layers producing egg-type hatching eggs. Rate of lay per day on May 1, 2010, averaged 73.1 eggs per 100 layers, up 1 percent from May 1, 2009.

## Egg-Type Chicks Hatched Up 11 Percent

Egg-type chicks hatched during April 2010 totaled 47.5 million, up 11 percent from April 2009. Eggs in incubators totaled 41.6 million on May 1, 2010, up 1 percent from a year ago.

Domestic placements of egg-type pullet chicks for future hatchery supply flocks by leading breeders totaled 232 thousand during April 2010, down 24 percent from April 2009.

## Broiler-Type Chicks Hatched Up 1 Percent

Broiler-type chicks hatched during April 2010 totaled 767 million, up 1 percent from April 2009. Eggs in incubators totaled 643 million on May 1, 2010, up 2 percent from a year earlier.

Leading breeders placed 6.54 million broiler-type pullet chicks for future domestic hatchery supply flocks during April 2010, up 5 percent from April 2009.



## Contents

## Page

U.S. Average Number of Layers on Hand and Egg Production.....	1
U.S. Layers on Hand and Eggs Produced by Type, Forced Molt, and Pullets.....	3
Layers on Hand and Eggs Produced by State.....	5
Egg Production by Type and State .....	7
Forced Molt .....	9
U.S. Hatchery Production Summary .....	10
Egg-Type Hatchery .....	11
Egg-Type Intended Placements .....	12
Broiler-Type Hatchery .....	12
Broiler-Type Intended Placements.....	14
Reliability of Chickens and Eggs Estimates.....	15
Regional Listing .....	16
Terms and Definitions of Chickens and Eggs Estimates.....	16
Information Contacts.....	16

**All Layers: Average Number on Hand During the Month,  
United States, 2009-10**

Month	2009	2010
	<i>1,000 Layers</i>	<i>1,000 Layers</i>
Dec <sup>1</sup>	340,638	339,744
Jan	341,400	339,009
Feb	341,068	339,086
Mar <sup>2</sup>	340,914	340,869
Apr	340,170	339,946
May	337,116	
Jun	334,032	
Jul	332,740	
Aug	332,612	
Sep	333,885	
Oct	335,819	
Nov	338,121	

<sup>1</sup> December preceding year.

<sup>2</sup> Revised 2010 only.

**Eggs: Production During the Month by Type,  
United States, 2009-10**

Month	Total Eggs <sup>1</sup>		Table Eggs		Hatching Eggs	
	2009	2010	2009	2010	2009	2010
	<i>Million Eggs</i>	<i>Million Eggs</i>	<i>Million Eggs</i>	<i>Million Eggs</i>	<i>Million Eggs</i>	<i>Million Eggs</i>
Dec <sup>2</sup>	7,778	7,827	6,711	6,758	1,068	1,068
Jan	7,678	7,688	6,603	6,606	1,075	1,082
Feb	6,903	6,909	5,917	5,923	985	986
Mar <sup>3</sup>	7,737	7,813	6,645	6,710	1,093	1,102
Apr	7,472	7,547	6,419	6,472	1,053	1,075
May	7,607		6,515		1,092	
Jun	7,360		6,301		1,059	
Jul	7,590		6,505		1,085	
Aug	7,593		6,518		1,075	
Sep	7,376		6,349		1,027	
Oct	7,696		6,638		1,059	
Nov	7,569		6,541		1,027	
During Year <sup>1</sup>	90,359		77,664		12,698	

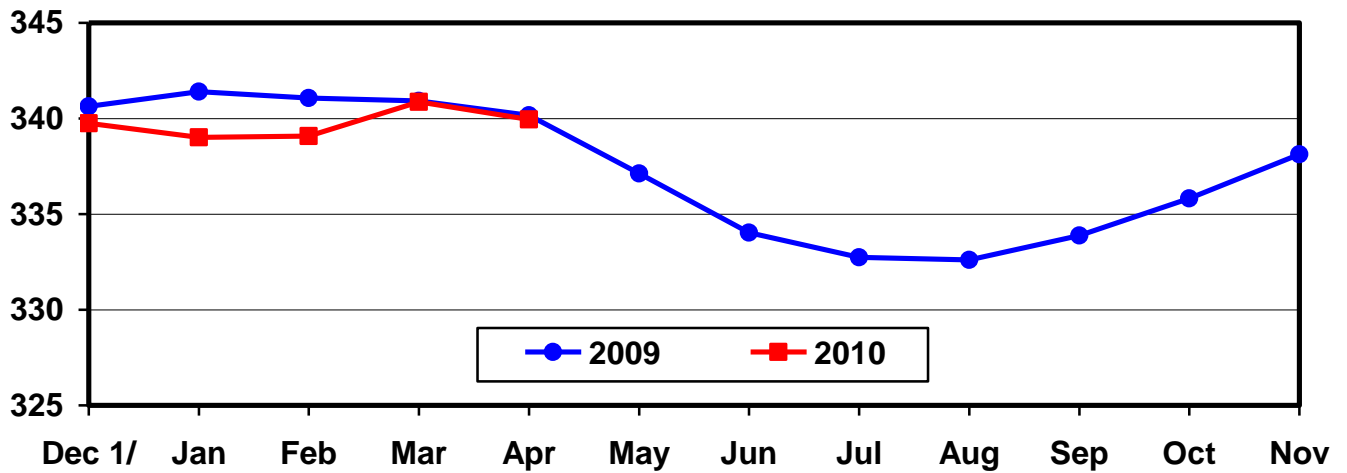
<sup>1</sup> Totals may not add due to rounding.

<sup>2</sup> December preceding year.

<sup>3</sup> Revised 2010 only.

## U.S. Average Number of Layers During the Month

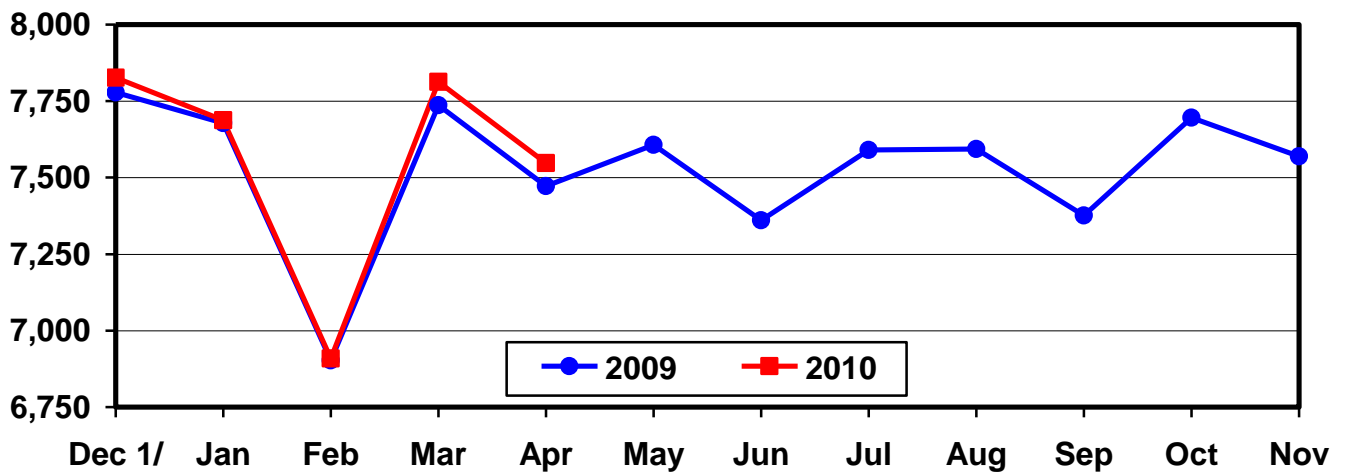
Million Layers



1/ Previous Year

## U.S. All Egg Production During the Month

Million Eggs



1/ Previous Year

**Layers and Eggs: Layers on Hand and Eggs Produced by Type,  
and Forced Molt, United States, March-April 2009-10**

Item	Unit	2009	2010 <sup>1</sup>	2010 as % of 2009
Layers During Mar <sup>2</sup>	1,000			
All Layers		340,914	340,869	100
Table Egg Type		283,531	282,419	100
Hatching Egg Type		57,383	58,450	102
Broiler-Type Hatching		54,309	55,450	102
Egg-Type Hatching		3,074	3,000	98
Eggs per 100 Layers During Mar	Number			
All Layers		2,269	2,292	101
Table Egg Type		2,344	2,376	101
Hatching Egg Type		1,905	1,885	99
Broiler-Type Hatching		1,874	1,850	99
Egg-Type Hatching		2,440	2,533	104
Eggs Produced During Mar <sup>2</sup>	Million			
All Layers		7,737	7,813	101
Table Egg Type		6,645	6,710	101
Hatching Egg Type		1,093	1,102	101
Broiler-Type Hatching		1,018	1,026	101
Egg-Type Hatching		75	76	101
Layers on Apr 1 <sup>2</sup>	1,000			
All Layers		341,067	341,657	100
Table Egg Type		283,651	283,189	100
Hatching Egg Type		57,416	58,468	102
Broiler-Type Hatching		54,346	55,434	102
Egg-Type Hatching		3,070	3,034	99
Eggs per 100 Layers on Apr 1	Number			
All Layers		73.9	74.8	101
Table Egg Type		76.5	77.6	101
Hatching Egg Type		61.1	61.0	100
Broiler-Type Hatching		60.1	60.0	100
Egg-Type Hatching		77.5	80.6	104
Forced Molt Layers on Apr 1	Percent			
Percent Being Molted		2.1	2.6	124
Percent with Molt Completed		21.8	21.1	97
Layers Sold for Slaughter During Mar	1,000	13,897	14,640	105
Layers Rendered, Died, Destroyed, Composted or Disappeared For Any Reason During Mar	1,000	7,535	6,468	86
Pullets on Apr 1	1,000	100,877	101,653	101
Pullets Added During Mar <sup>3</sup>	1,000	23,907	23,678	99

<sup>1</sup> Revised.

<sup>2</sup> Totals may not add due to rounding.

<sup>3</sup> Pullet chicks less than 3 days old added to pullet flocks.

**Layers and Eggs: Layers on Hand and Eggs Produced by Type,  
and Forced Molt, United States, April-May 2009-10**

Item	Unit	2009	2010	2010 as % of 2009
Layers During Apr <sup>1</sup>	1,000			
All Layers		340,170	339,946	100
Table Egg Type		282,880	281,125	99
Hatching Egg Type		57,290	58,821	103
Broiler-Type Hatching		54,248	55,804	103
Egg-Type Hatching		3,042	3,017	99
Eggs per 100 Layers During Apr	Number			
All Layers		2,197	2,220	101
Table Egg Type		2,269	2,302	101
Hatching Egg Type		1,838	1,828	99
Broiler-Type Hatching		1,810	1,794	99
Egg-Type Hatching		2,334	2,453	105
Eggs Produced During Apr <sup>1</sup>	Million			
All Layers		7,472	7,547	101
Table Egg Type		6,419	6,472	101
Hatching Egg Type		1,053	1,075	102
Broiler-Type Hatching		982	1,001	102
Egg-Type Hatching		71	74	104
Layers on May 1 <sup>1</sup>	1,000			
All Layers		339,239	338,203	100
Table Egg Type		282,094	279,046	99
Hatching Egg Type		57,145	59,157	104
Broiler-Type Hatching		54,135	56,163	104
Egg-Type Hatching		3,010	2,994	99
Eggs per 100 Layers on May 1	Number			
All Layers		72.4	73.1	101
Table Egg Type		74.6	75.7	101
Hatching Egg Type		61.3	60.9	99
Broiler-Type Hatching		60.3	59.8	99
Egg-Type Hatching		79.8	80.8	101
Forced Molt Layers on May 1	Percent			
Percent Being Molted		4.5	4.3	96
Percent with Molt Completed		20.7	20.7	100
Layers Sold for Slaughter During Apr	1,000	14,385	14,217	99
Layers Rendered, Died, Destroyed, Composted or Disappeared For Any Reason During Apr	1,000	8,215	9,346	114
Pullets on May 1	1,000	100,174	101,613	101
Pullets Added During Apr <sup>2</sup>	1,000	21,237	20,900	98

<sup>1</sup> Totals may not add due to rounding.

<sup>2</sup> Pullet chicks less than 3 days old added to pullet flocks.

**Layers and Eggs: Layers on Hand and Eggs Produced by State  
and United States, During March 2009-10**

State	Table Egg Layers in Flocks 30,000 and Above		All Layers		Eggs per 100 for All Layers	
	2009	2010 <sup>1</sup>	2009	2010 <sup>1</sup>	2009	2010 <sup>1</sup>
	<i>1,000</i>	<i>1,000</i>	<i>1,000</i>	<i>1,000</i>	<i>Number</i>	<i>Number</i>
AL	1,432	1,340	9,297	9,816	1,958	1,895
AR	3,522	3,258	12,792	12,299	1,986	2,025
CA	19,450	19,233	19,747	19,541	2,274	2,374
CO	3,404	3,192	3,854	3,702	2,543	2,485
CT	2,754	2,546	2,822	2,622	2,339	2,326
FL	9,628	9,272	9,989	9,560	2,222	2,385
GA	9,216	8,816	18,048	17,640	2,166	2,217
HI	310	261	337	306	1,751	1,863
IL	4,475	4,323	4,688	4,547	2,240	2,375
IN	23,507	23,123	24,315	23,886	2,311	2,353
IA	52,937	53,447	53,884	54,327	2,272	2,306
ME	3,450	3,570	3,531	3,625	2,181	2,455
MD	2,108	2,219	2,247	2,340	2,225	2,350
MI	9,666	10,104	9,830	10,273	2,411	2,453
MN	9,721	9,953	10,235	10,453	2,374	2,325
MS	1,484	1,474	6,042	6,050	2,085	2,083
MO	5,817	5,685	7,095	7,058	2,396	2,324
NE	9,697	9,382	9,747	9,432	2,360	2,439
NY	3,926	3,713	4,141	3,943	2,487	2,485
NC	5,304	5,920	12,504	13,358	2,127	2,089
OH	26,906	27,302	27,349	27,805	2,300	2,273
OR	2,290	2,197	2,433	2,329	2,630	2,447
PA	21,580	22,505	22,712	23,622	2,452	2,489
SC	2,979	3,140	4,276	4,417	2,198	2,196
SD	2,416	2,390	2,456	2,430	2,443	2,387
TX	14,757	13,411	19,303	17,957	2,269	2,300
UT <sup>2</sup>		3,358		3,388		2,243
VA	1,246	1,172	2,907	3,476	2,064	2,014
WA	6,007	6,344	6,122	6,459	2,369	2,384
WI	4,368	4,242	4,947	4,826	2,345	2,300
Oth Sts <sup>3</sup>	14,723	11,035	23,264	19,382	2,205	2,172
US	279,080	277,927	340,914	340,869	2,269	2,292

<sup>1</sup> Revised.

<sup>2</sup> Included in Oth Sts in 2009.

<sup>3</sup> Not published separately to avoid disclosing data for individual operations.



**Layers and Eggs: Layers on Hand and Eggs Produced by State  
and United States, During April 2009-10**

State	Table Egg Layers in Flocks 30,000 and Above		All Layers		Eggs per 100 for All Layers	
	2009	2010	2009	2010	2009	2010
	<i>1,000</i>	<i>1,000</i>	<i>1,000</i>	<i>1,000</i>	<i>Number</i>	<i>Number</i>
AL	1,358	1,338	9,324	9,855	1,898	1,847
AR	3,422	3,252	12,467	12,283	1,957	1,978
CA	19,476	19,205	19,774	19,512	2,190	2,255
CO	3,293	3,227	3,772	3,766	2,466	2,363
CT	2,819	2,609	2,884	2,683	2,323	2,311
FL	9,514	9,065	9,894	9,382	2,244	2,238
GA	9,042	8,609	17,779	17,492	2,081	2,110
HI	312	255	339	300	1,740	1,700
IL	4,539	4,403	4,729	4,622	2,263	2,272
IN	23,283	22,923	24,091	23,686	2,262	2,292
IA	52,811	53,563	53,742	54,442	2,207	2,263
ME	3,330	3,575	3,417	3,630	2,136	2,397
MD	2,024	2,118	2,173	2,253	2,071	2,219
MI	9,626	10,046	9,790	10,216	2,257	2,418
MN	9,753	9,865	10,250	10,355	2,244	2,231
MS	1,506	1,389	6,101	6,096	1,967	1,969
MO	5,780	5,726	7,064	7,069	2,336	2,263
NE	9,716	9,368	9,766	9,418	2,324	2,389
NY	3,881	3,560	4,096	3,787	2,441	2,403
NC	5,533	6,008	12,784	13,586	2,042	1,987
OH	26,846	27,039	27,293	27,547	2,224	2,218
OR	2,375	2,159	2,515	2,307	2,465	2,427
PA	21,634	22,419	22,774	23,539	2,380	2,426
SC	3,059	3,076	4,388	4,356	2,028	2,089
SD	2,332	2,336	2,372	2,376	2,277	2,273
TX	14,619	13,510	19,164	18,090	2,192	2,184
UT <sup>1</sup>		3,388		3,418		2,194
VA	1,151	1,232	2,886	3,511	2,010	1,937
WA	6,050	6,272	6,165	6,387	2,287	2,317
WI	4,420	4,277	5,005	4,868	2,298	2,280
Oth Sts <sup>2</sup>	14,925	10,821	23,372	19,114	2,105	2,124
US	278,429	276,633	340,170	339,946	2,197	2,220

<sup>1</sup> Included in Oth Sts in 2009.

<sup>2</sup> Not published separately to avoid disclosing data for individual operations.

**Egg Production: By Type, State, and United States,  
March 2009-10**

State	Total Production <sup>1</sup>		Table Eggs <sup>2</sup>		Hatching Eggs <sup>2</sup>	
	2009	2010 <sup>3</sup>	2009	2010 <sup>3</sup>	2009	2010
	<i>Million Eggs</i>	<i>Million Eggs</i>	<i>Million Eggs</i>	<i>Million Eggs</i>	<i>Million Eggs</i>	<i>Million Eggs</i>
AL	182	186	34	30	148	156
AR	254	249	84	84	170	165
CA	449	464				
CO	98	92				
CT	66	61				
FL	222	228	215	224	7	4
GA	391	391	222	218	169	173
HI	5.9	5.7	5.9	5.7	0	0
IL	105	108	102	105	3	3
IN	562	562	547	548	15	14
IA	1,224	1,253	1,208	1,239	16	14
ME	77	89				
MD	50	55	49	54	1	1
MI	237	252				
MN	243	243	234	235	9	8
MS	126	126	36	38	90	88
MO	170	164				
NE	230	230	230	230	0	0
NY	103	98				
NC	266	279	134	145	132	134
OH	629	632				
OR	64	57	62	55	2	2
PA	557	588	537	567	20	21
SC	94	97	72	75	22	22
SD	60	58	60	58	0	0
TX	438	413				
UT <sup>4</sup>		76		76		0
VA	60	70	31	28	29	42
WA	145	154				
WI	116	111				
Oth Sts <sup>5</sup>	513	421	375	290	139	131
US <sup>1</sup>	7,737	7,813	6,645	6,710	1,093	1,102

<sup>1</sup> Totals may not add due to rounding.

<sup>2</sup> Data by type of flock not shown for some States to avoid disclosing individual operations, data included in US totals.

<sup>3</sup> Revised.

<sup>4</sup> Included in Oth Sts in 2009.

<sup>5</sup> Not published separately to avoid disclosing data for individual operations.

**Egg Production: By Type, State, and United States,  
April 2009-10**

State	Total Production <sup>1</sup>		Table Eggs <sup>2</sup>		Hatching Eggs <sup>2</sup>	
	2009	2010	2009	2010	2009	2010
	<i>Million Eggs</i>	<i>Million Eggs</i>	<i>Million Eggs</i>	<i>Million Eggs</i>	<i>Million Eggs</i>	<i>Million Eggs</i>
AL	177	182	32	31	145	151
AR	244	243	83	78	161	165
CA	433	440				
CO	93	89				
CT	67	62				
FL	222	210	215	206	7	4
GA	370	369	209	200	161	169
HI	5.9	5.1	5.9	5.1	0	0
IL	107	105	104	102	3	3
IN	545	543	530	529	15	14
IA	1,186	1,232	1,171	1,218	15	14
ME	73	87				
MD	45	50	43	49	2	1
MI	221	247				
MN	230	231	222	223	8	8
MS	120	120	35	34	85	86
MO	165	160				
NE	227	225	227	225	0	0
NY	100	91				
NC	261	270	135	138	126	132
OH	607	611				
OR	62	56	60	54	2	2
PA	542	571	522	551	20	20
SC	89	91	67	70	22	21
SD	54	54	54	54	0	0
TX	420	395				
UT <sup>3</sup>		75		75		0
VA	58	68	28	27	30	41
WA	141	148				
WI	115	111				
Oth Sts <sup>4</sup>	492	406	360	281	132	125
US <sup>1</sup>	7,472	7,547	6,419	6,472	1,053	1,075

<sup>1</sup> Totals may not add due to rounding.

<sup>2</sup> Data by type of flock not shown for some States to avoid disclosing individual operations, data included in US totals.

<sup>3</sup> Included in Oth Sts in 2009.

<sup>4</sup> Not published separately to avoid disclosing data for individual operations.

**Forced Molt: Percent of All Layers by Month,  
United States, 2009-10**

Month	Percent Being Molted <sup>1</sup>		Percent with Molt Completed <sup>1</sup>	
	2009	2010	2009	2010
	<i>Percent</i>	<i>Percent</i>	<i>Percent</i>	<i>Percent</i>
Jan	3.3	2.7	21.3	20.6
Feb	3.4	3.6	21.6	20.1
Mar	3.4	3.2	21.5	21.0
Apr <sup>2</sup>	2.1	2.6	21.8	21.1
May	4.5	4.3	20.7	20.7
Jun	3.4		21.4	
Jul	3.4		20.8	
Aug	2.7		21.4	
Sep	2.9		21.2	
Oct	3.5		21.1	
Nov	2.3		21.9	
Dec	1.8		22.2	

<sup>1</sup> As of first of month.

<sup>2</sup> Revised 2010 only.

**Forced Molt: Percent of All Layers by State  
and United States, May 1, 2009-10**

State	Percent Being Molted <sup>1</sup>		Percent with Molt Completed <sup>1</sup>	
	2009	2010	2009	2010
	<i>Percent</i>	<i>Percent</i>	<i>Percent</i>	<i>Percent</i>
AL	1.5	1.5	5.5	6.0
AR	2.0	1.5	9.0	8.0
CA	7.5	10.0	26.0	25.5
CO	3.0	3.5	13.5	15.5
CT	0.0	0.0	15.0	6.5
FL	8.5	9.0	30.0	32.0
GA	5.0	5.5	11.0	11.5
HI	9.0	9.0	53.0	48.5
IL	1.5	7.0	35.0	21.0
IN	5.5	4.5	35.5	34.0
IA	3.5	4.5	34.0	35.0
ME	0.0	0.0	0.0	0.0
MD	3.5	11.0	19.5	12.0
MI	9.5	5.5	20.5	23.0
MN	5.0	4.0	23.5	23.0
MS	2.5	4.5	8.0	5.5
MO	4.0	2.5	11.5	22.0
NE	0.0	0.0	1.5	2.0
NY	0.0	2.0	6.5	9.5
NC	0.0	2.0	10.5	9.5
OH	6.0	3.5	18.0	20.0
OR	10.0	8.0	28.0	29.5
PA	3.5	2.0	11.0	12.0
SC	6.5	6.0	14.5	12.5
SD	7.0	16.5	33.5	21.0
TX	5.5	4.5	19.0	13.5
UT <sup>2</sup>		11.0		36.5
VA	3.0	7.5	9.0	11.0
WA	9.5	9.5	29.5	26.5
WI	7.0	0.0	25.5	39.0
Oth Sts <sup>3</sup>	5.1	1.7	19.5	17.3
US	4.5	4.3	20.7	20.7

<sup>1</sup> As of first of month.

<sup>2</sup> Included in Oth Sts in 2009.

<sup>3</sup> Not published separately to avoid disclosing data for individual operations.

**Hatchery Production: Eggs in Incubators, Chicks Hatched,  
and Placements by Type, United States, April-May 2009-10**

Item	2009	2010	2010 as % of 2009
	<i>1,000</i>	<i>1,000</i>	<i>Percent</i>
Egg-Type			
Eggs in Incubators on May 1	41,162	41,556	101
Chicks Hatched During Apr	42,794	47,503	111
Chicks Hatched Jan thru Apr	159,138	171,568	108
Pullets Hatched During Apr for Intended Placements in Hatchery Supply Flocks	307	232	76
7-18 Months Earlier <sup>1</sup>	2,879	3,318	115
Broiler-Type			
Eggs in Incubators on May 1	630,826	643,089	102
Chicks Hatched During Apr	758,663	767,225	101
Chicks Hatched Jan thru Apr	3,028,967	3,029,570	100
Pullets Hatched During Apr for Intended Placements in Hatchery Supply Flocks	6,240	6,538	105
7-15 Months Earlier <sup>2</sup>	65,173	62,672	96

<sup>1</sup> 2010 includes pullet chicks hatched Oct 2008 through Sep 2009.

<sup>2</sup> 2010 includes pullet chicks hatched Jan 2009 through Sep 2009.

**Egg-Type Eggs in Incubators: By Region and United States,  
May 1, 2009-10**

Region	2009	2010	2010 as % of 2009
	<i>1,000</i>	<i>1,000</i>	<i>Percent</i>
North Atlantic	5,309	5,156	97
E North Central	7,351	9,040	123
W North Central	9,177	8,769	96
South Atlantic	4,022	4,177	104
South Central	6,344	5,938	94
West	8,959	8,476	95
US	41,162	41,556	101

**Egg-Type Chicks Hatched: By Month, United States, 2009-10**

Month	By Months			Cumulative		
	2009	2010	2010 as % of 2009	2009	2010	2010 as % of 2009
	<i>1,000</i>	<i>1,000</i>	<i>Percent</i>	<i>1,000</i>	<i>1,000</i>	<i>Percent</i>
Jan	37,812	38,794	103	37,812	38,794	103
Feb	36,795	40,120	109	74,607	78,914	106
Mar	41,737	45,151	108	116,344	124,065	107
Apr	42,794	47,503	111	159,138	171,568	108
May	40,758			199,896		
Jun	41,968			241,864		
Jul	36,213			278,077		
Aug	37,945			316,022		
Sep	40,515			356,537		
Oct	37,566			394,103		
Nov	34,512			428,615		
Dec	39,554			468,169		

**Intended Placements: Egg-Type Pullet Chicks for Hatchery Supply  
Flocks by Month and Total, United States, 2009-10**

Month	Pullet Chicks Hatched		2010 as % of 2009	Cumulative Potential Plcmts Relative to Current Supply Flocks 7-18 Months Earlier <sup>1</sup>	
	2009	2010		2009	2010
	<i>1,000</i>	<i>1,000</i>	<i>Percent</i>	<i>1,000</i>	<i>1,000</i>
Jan	240	227	95	2,907	3,198
Feb	256	296	116	2,968	3,296
Mar	277	260	94	2,969	3,308
Apr	307	232	76	2,879	3,318
May	275			2,968	3,322
Jun	321			3,004	3,295
Jul	342			2,958	3,405
Aug	291			3,000	3,392
Sep	220			2,985	3,432
Oct	277			3,017	3,415
Nov	290			3,060	3,340
Dec	309			3,108	
Total	3,405				

<sup>1</sup> For April 2010, includes breeder pullet chicks hatched Oct 2008 through Sep 2009. The 7-18 months represent the first laying cycle. Molting and additional laying cycles will increase the cumulative potential placements.

**Broiler-Type Eggs in Incubators: By Region  
and United States, May 1, 2009-10**

Region	2009	2010	2010 as % of 2009
	<i>1,000</i>	<i>1,000</i>	<i>Percent</i>
North Atlantic	12,830	12,326	96
E North Central	13,137	12,627	96
W North Central	28,922	28,554	99
South Atlantic	231,791	236,453	102
South Central	319,224	329,431	103
West	24,922	23,698	95
US	630,826	643,089	102

**Broiler-Type Chicks Hatched: By State  
and United States, April 2009-10**

State	During April			Jan-Apr		
	2009	2010	2010 as % of 2009	2009	2010	2010 as % of 2009
	<i>1,000</i>	<i>1,000</i>	<i>Percent</i>	<i>1,000</i>	<i>1,000</i>	<i>Percent</i>
AL	108,004	107,808	100	424,877	424,653	100
AR	84,912	86,476	102	349,352	344,860	99
DE	12,718	13,553	107	49,400	48,448	98
FL	3,476	4,627	133	14,390	18,709	130
GA	112,666	112,528	100	461,782	446,716	97
KY	27,640	28,802	104	108,046	112,334	104
LA	8,132	12,539	154	44,501	49,010	110
MD	32,228	32,231	100	126,005	126,886	101
MS	65,364	70,156	107	256,666	276,805	108
NC	68,415	66,671	97	270,668	266,300	98
OK	25,096	24,399	97	96,620	96,194	100
PA	13,437	13,282	99	55,155	52,067	94
SC	19,824	20,649	104	78,194	79,566	102
TX	57,791	55,070	95	230,529	221,444	96
VA	22,205	22,891	103	85,410	89,519	105
CA, MO, TN, & WV	70,768	69,500	98	278,416	272,270	98
19 Sts <sup>1</sup>	732,676	741,182	101	2,930,011	2,925,781	100
Oth Sts <sup>2</sup>	25,987	26,043	100	98,956	103,789	105
US	758,663	767,225	101	3,028,967	3,029,570	100

<sup>1</sup> States in the weekly hatchery production estimating program.

<sup>2</sup> Not published separately to avoid disclosing data for individual operations.

**Broiler-Type Chicks Hatched: By Month, United States, 2009-10**

Month	By Months			Cumulative		
	2009	2010	2010 as % of 2009	2009	2010	2010 as % of 2009
	<i>1,000</i>	<i>1,000</i>	<i>Percent</i>	<i>1,000</i>	<i>1,000</i>	<i>Percent</i>
Jan	780,219	775,615	99	780,219	775,615	99
Feb	704,234	699,776	99	1,484,453	1,475,391	99
Mar	785,851	786,954	100	2,270,304	2,262,345	100
Apr	758,663	767,225	101	3,028,967	3,029,570	100
May	789,812			3,818,779		
Jun	773,590			4,592,369		
Jul	784,118			5,376,487		
Aug	781,423			6,157,910		
Sep	742,769			6,900,679		
Oct	730,698			7,631,377		
Nov	705,439			8,336,816		
Dec	779,533			9,116,349		



**Intended Placements: Broiler-Type Pullet Chicks for Hatchery  
Supply Flocks by Month and Total, 2009-10**

Month	Pullet Chicks Hatched		2010 as % of 2009	Cumulative Potential Plcmts Relative to Current Supply Flocks 7-15 Months Earlier <sup>1</sup>	
	2009	2010		2009	2010
	<i>1,000</i>	<i>1,000</i>	<i>Percent</i>	<i>1,000</i>	<i>1,000</i>
US Place- ments					
Jan	7,142	7,219	101	65,952	62,833
Feb	7,215	6,994	97	65,444	62,005
Mar	6,773	6,610	98	65,535	62,142
Apr	6,240	6,538	105	65,173	62,672
May	7,658			65,203	61,918
Jun	7,157			64,693	62,049
Jul	6,214			64,183	61,903
Aug	7,163			64,206	62,882
Sep	7,110			63,204	61,918
Oct	6,388			62,823	61,371
Nov	7,346			62,601	61,695
Dec	6,627			62,562	
Annual Total	83,033				
Total Place- ments <sup>2</sup>					
Jan	8,410	8,626	103		
Feb	8,524	8,972	105		
Mar	8,626	8,910	103		
Apr	7,746	8,031	104		
May	9,143				
Jun	8,830				
Jul	7,469				
Aug	8,975				
Sep	8,947				
Oct	7,883				
Nov	8,916				
Dec	8,400				
Annual Total	101,869				

<sup>1</sup> For Apr 2010, includes breeder pullet chicks hatched Jan 2009 through Sep 2009.

<sup>2</sup> U.S. production of intended placements worldwide.

## Reliability of Chickens and Eggs Estimates

**Survey Procedures:** Primary data for the "Chickens and Eggs" report are from weekly and/or monthly questionnaires sent to producers. An attempt is made to collect information for layer and egg estimates from each known contractor and independent producer who has at least 30,000 table egg layers, flocks of hatchery supply layers, or pullet only operations with at least 500 pullets. Coverage for operations with less than 30,000 table egg layers are estimated each month based on data reported in December. Approximately 650 contractors, independent egg producers, and pullet only operations are contacted each month. All known hatcheries, approximately 300, are contacted for information on a weekly and/or monthly basis.

**Estimating Procedures:** Sound statistical methodology is employed to derive estimates from the reported data. All data are analyzed for unusual values. Data from each operation are compared to their own past operating profile and to trends from similar operations. Data for missing operations are estimated based on similar operations or historical data. NASS field offices prepare these estimates by using a combination of survey indications and historic trends. Individual State estimates are reviewed by the Agricultural Statistics Board for reasonableness. Individual hatchery data are summed to State, regional, and U.S. totals.

For chicken hatcheries, chicks hatched consist of all chicks of domesticated breeds including males and chicks destined for hatchery supply flocks and research purposes. Eggs set are eggs in incubators for the purpose of hatching. The relationship of egg-type chicks hatched to chicken inventory and poultry marketings are carefully monitored. The disposition of egg-type chicks hatched prior to placement into the laying flock can vary significantly, which can make comparisons to changes in layer inventory inconsistent over time. Broiler chicks placed are specifically placed on feed for meat production. Intended placement data reported by leading breeders include pullet chicks expected from eggs sold the preceding month. The breeders in this report account for a large percentage of replacement pullets for hatchery supply flocks. Production of replacement pullets by these breeders indicates the number of pullets available to hatchery supply layer flocks several months before the pullets will actually move into the laying flocks. Hatchery Supply Flocks include all generations of layers which could lay eggs to supply a hatchery. This includes the generations of parents, grandparents, great-grandparents, pedigree, etc. Also included are research flocks, vaccine flocks, and specific pathogen-free flocks. The broiler cumulative potential placements are a moving total of the intended placements 7-15 months earlier. The egg-type cumulative potential placements of 7-18 months earlier represent the first laying cycle. Molting and additional laying cycles will increase the cumulative potential placements of egg-type hatching flocks.

**Revision Policy:** The previous month's estimates are subject to revision if late reports or corrected data indicates a different level. Additionally, revisions after the monthly report will be made at the end of the marketing year and published in the annual reports of "Chickens and Eggs Summary" and "Hatchery Production".

**Reliability:** Estimates are based on a census of all known contractors and independent producers who have at least 30,000 table egg layers, flocks of hatchery supply layers, pullet only operations with at least 500 pullets, or operating hatcheries and therefore, have no sampling error. However, estimates are subject to errors such as omission, duplication, and mistakes in reporting, recording, and processing the data. While these errors cannot be measured directly, they are minimized through strict quality controls in the data collection process and a careful review of all reported data for consistency and reasonableness.

To assist in evaluating the reliability of the estimates in this report, the Root Mean Square Error is shown for selected items in the following table. The Root Mean Square Error is a statistical measure based on past performance and is computed using the differences between first and final estimates. The Root Mean Square Error for all layers over the past 24 months is 0.1 percent. This means that chances are 2 out of 3 that the final estimate will not be above or below the current estimate of 340 million layers by more than 0.1 percent. Chances are 9 out of 10 that the difference will not exceed 0.2 percent.

**Reliability of Layer and Egg Estimates**

Item	Root Mean Square Error	90 Percent Confidence Level		Difference Between First and Latest Estimates			Number of Months	
				Average	Smallest	Largest	First Above Latest	First Below Latest
				<i>1,000</i>	<i>1,000</i>	<i>1,000</i>	<i>Number</i>	<i>Number</i>
All Layers	<i>Percent</i> 0.1	<i>Percent</i> 0.2	<i>1,000</i> 8	<i>1,000</i> 410	<i>1,000</i> 50	<i>1,000</i> 873	<i>Number</i> 11	<i>Number</i> 13
Eggs	<i>Percent</i> 0.2	<i>Percent</i> 0.3	<i>Million Eggs</i> 0	<i>Million Eggs</i> 10	<i>Million Eggs</i> 0	<i>Million Eggs</i> 23	<i>Number</i> 10	<i>Number</i> 13

**Regional Listing**

North Atlantic: CT, ME, MA, NH, NJ, NY, PA, RI, VT.

East North Central: IL, IN, MI, OH, WI.

West North Central: IA, KS, MN, MO, NE, ND, SD.

South Atlantic: DE, FL, GA, MD, NC, SC, VA, WV.

South Central: AL, AR, KY, LA, MS, OK, TN, TX.

West: AK, AZ, CA, CO, HI, ID, MT, NM, NV, OR, UT, WA, WY.

**Terms and Definitions of Chickens and Eggs Estimates**

**All Layers** includes both table egg and hatching egg flocks regardless of size.

**Intended Placements** are reported by leading breeders. Coverage may not be 100 percent. Includes expected pullet chicks from eggs sold during the preceding month at the rate of 125 pullet chicks per case of 30 dozen eggs.

**Information Contacts**

Listed below are the commodity specialists in the Livestock Branch of the National Agricultural Statistics Service to contact for additional information.

- Dan Kerestes, Chief, Livestock Branch ..... (202) 720-3570
- Bruce Boess, Head, Poultry and Specialty Commodities Section..... (202) 720-4447
- Doug Bounds – Poultry Slaughter, Turkey Hatchery, Turkeys Raised..... (202) 690-3237
- David Colwell – Cold Storage..... (202) 720-8784
- Chris Hawthorn – Catfish Processing, Catfish Production, Trout Production,  
        Census of Aquaculture, Egg Products, Mink ..... (202) 720-0585
- Kim Linonis – Layers, Eggs..... (202) 690-8632
- Troy Marshall – Broiler Hatchery, Chicken Hatchery, Honey..... (202) 720-3244

## ACCESS TO REPORTS!!

---

For your convenience, there are several ways to obtain NASS reports, data products, and services:

### INTERNET ACCESS

All NASS reports are available free of charge. For free access, connect to the Internet and go to the NASS Home Page at: [www.nass.usda.gov](http://www.nass.usda.gov).

### E-MAIL SUBSCRIPTION

All NASS reports are available by subscription free of charge direct to your e-mail address. Starting with the NASS Home Page at [www.nass.usda.gov](http://www.nass.usda.gov), under the right navigation, *Receive reports by Email*, click on **National** or **State**. Follow the instructions on the screen.

-----

### PRINTED REPORTS OR DATA PRODUCTS

**CALL OUR TOLL-FREE ORDER DESK: 800-999-6779 (U.S. and Canada)**  
**Other areas, please call 703-605-6220      FAX: 703-605-6880**  
**(Visa, MasterCard, check, or money order acceptable for payment.)**

-----

### ASSISTANCE

For **assistance** with general agricultural statistics or further information about NASS or its products or services, contact the **Agricultural Statistics Hotline** at **800-727-9540**, 7:30 a.m. to 4:00 p.m. ET, or e-mail: [nass@nass.usda.gov](mailto:nass@nass.usda.gov).

The U.S. Department of Agriculture (USDA) prohibits discrimination in all its programs and activities on the basis of race, color, national origin, age, disability, and where applicable, sex, marital status, familial status, parental status, religion, sexual orientation, genetic information, political beliefs, reprisal, or because all or a part of an individual's income is derived from any public assistance program. (Not all prohibited bases apply to all programs.) Persons with disabilities who require alternative means for communication of program information (Braille, large print, audiotape, etc.) should contact USDA's TARGET Center at (202) 720-2600 (voice and TDD).

To file a complaint of discrimination, write to USDA, Director, Office of Civil Rights, 1400 Independence Avenue, S.W., Washington, D.C. 20250-9410, or call (800) 795-3272 (voice) or (202) 720-6382 (TDD). USDA is an equal opportunity provider and employer.