

# Chickens and Eggs

---

Released June 22, 2010, by the National Agricultural Statistics Service (NASS), Agricultural Statistics Board, U.S. Department of Agriculture. For information on "Layers and Eggs" call Kim Linonis at (202) 690-8632, for "Chicks Hatched" call Troy Marshall at (202) 720-3244, office hours 7:30 a.m. to 4:00 p.m. ET.

## May Egg Production Up 1 Percent

U.S. egg production totaled 7.69 billion during May 2010, up 1 percent from last year. Production included 6.58 billion table eggs, and 1.11 billion hatching eggs, of which 1.04 billion were broiler-type and 73 million were egg-type. The total number of layers during May 2010 averaged 338 million, up slightly from last year. May egg production per 100 layers was 2,276 eggs, up 1 percent from May 2009.

All layers in the U.S. on June 1, 2010 totaled 337 million, up 1 percent from last year. The 337 million layers consisted of 279 million layers producing table or market type eggs, 55.3 million layers producing broiler-type hatching eggs, and 2.94 million layers producing egg-type hatching eggs. Rate of lay per day on June 1, 2010, averaged 73.6 eggs per 100 layers, up 1 percent from June 1, 2009.

## Egg-Type Chicks Hatched Up 6 Percent

Egg-type chicks hatched during May 2010 totaled 43.1 million, up 6 percent from May 2009. Eggs in incubators totaled 39.3 million on June 1, 2010, down slightly from a year ago.

Domestic placements of egg-type pullet chicks for future hatchery supply flocks by leading breeders totaled 230 thousand during May 2010, down 16 percent from May 2009.

## Broiler-Type Chicks Hatched Up 1 Percent

Broiler-type chicks hatched during May 2010 totaled 798 million, up 1 percent from May 2009. Eggs in incubators totaled 655 million on June 1, 2010, up 2 percent from a year earlier.

Leading breeders placed 8.01 million broiler-type pullet chicks for future domestic hatchery supply flocks during May 2010, up 5 percent from May 2009.



## Contents

## Page

U.S. Average Number of Layers on Hand and Egg Production.....	1
U.S. Layers on Hand and Eggs Produced by Type, Forced Molt, and Pullets.....	3
Layers on Hand and Eggs Produced by State.....	5
Egg Production by Type and State .....	7
Forced Molt .....	9
U.S. Hatchery Production Summary .....	10
Egg-Type Hatchery .....	11
Egg-Type Intended Placements .....	12
Broiler-Type Hatchery .....	12
Broiler-Type Intended Placements.....	14
Reliability of Chickens and Eggs Estimates.....	15
Regional Listing .....	16
Terms and Definitions of Chickens and Eggs Estimates.....	16
Information Contacts.....	16

**All Layers: Average Number on Hand During the Month,  
United States, 2009-10**

Month	2009	2010
	<i>1,000 Layers</i>	<i>1,000 Layers</i>
Dec <sup>1</sup>	340,638	339,744
Jan	341,400	339,009
Feb	341,068	339,086
Mar	340,914	340,869
Apr	340,170	339,946
May	337,116	337,867
Jun	334,032	
Jul	332,740	
Aug	332,612	
Sep	333,885	
Oct	335,819	
Nov	338,121	

<sup>1</sup> December preceding year.

**Eggs: Production During the Month by Type,  
United States, 2009-10**

Month	Total Eggs <sup>1</sup>		Table Eggs		Hatching Eggs	
	2009	2010	2009	2010	2009	2010
	<i>Million Eggs</i>	<i>Million Eggs</i>	<i>Million Eggs</i>	<i>Million Eggs</i>	<i>Million Eggs</i>	<i>Million Eggs</i>
Dec <sup>2</sup>	7,778	7,827	6,711	6,758	1,068	1,068
Jan	7,678	7,688	6,603	6,606	1,075	1,082
Feb	6,903	6,909	5,917	5,923	985	986
Mar	7,737	7,813	6,645	6,710	1,093	1,102
Apr <sup>3</sup>	7,472	7,548	6,419	6,473	1,053	1,075
May	7,607	7,690	6,515	6,580	1,092	1,110
Jun	7,360		6,301		1,059	
Jul	7,590		6,505		1,085	
Aug	7,593		6,518		1,075	
Sep	7,376		6,349		1,027	
Oct	7,696		6,638		1,059	
Nov	7,569		6,541		1,027	
During Year <sup>1</sup>	90,359		77,664		12,698	

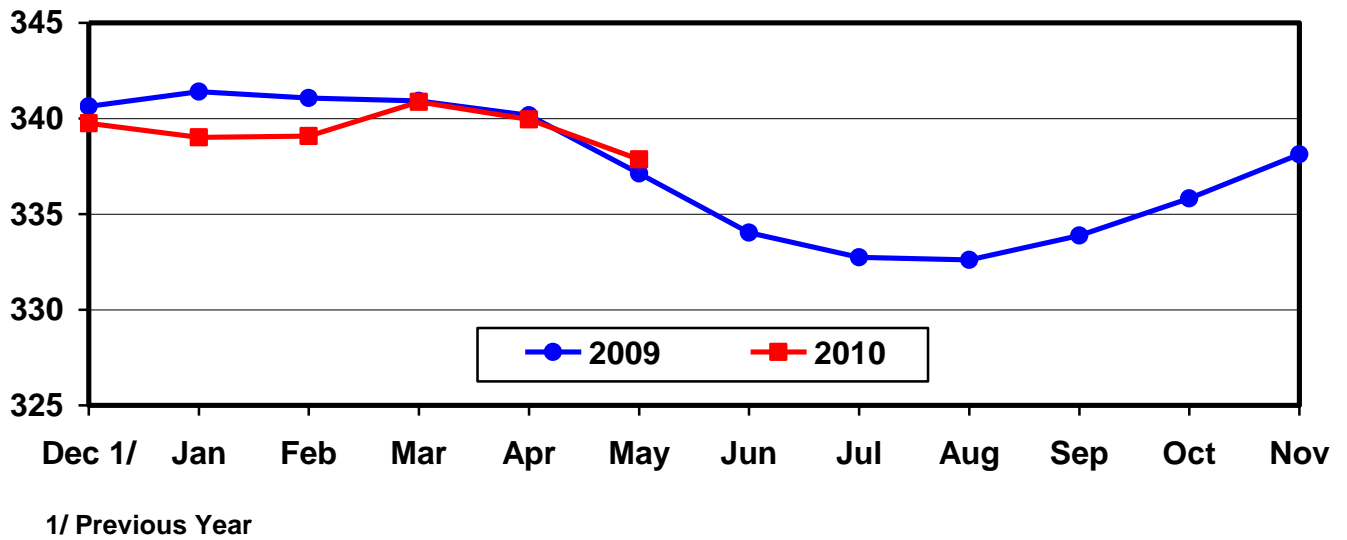
<sup>1</sup> Totals may not add due to rounding.

<sup>2</sup> December preceding year.

<sup>3</sup> Revised 2010 only.

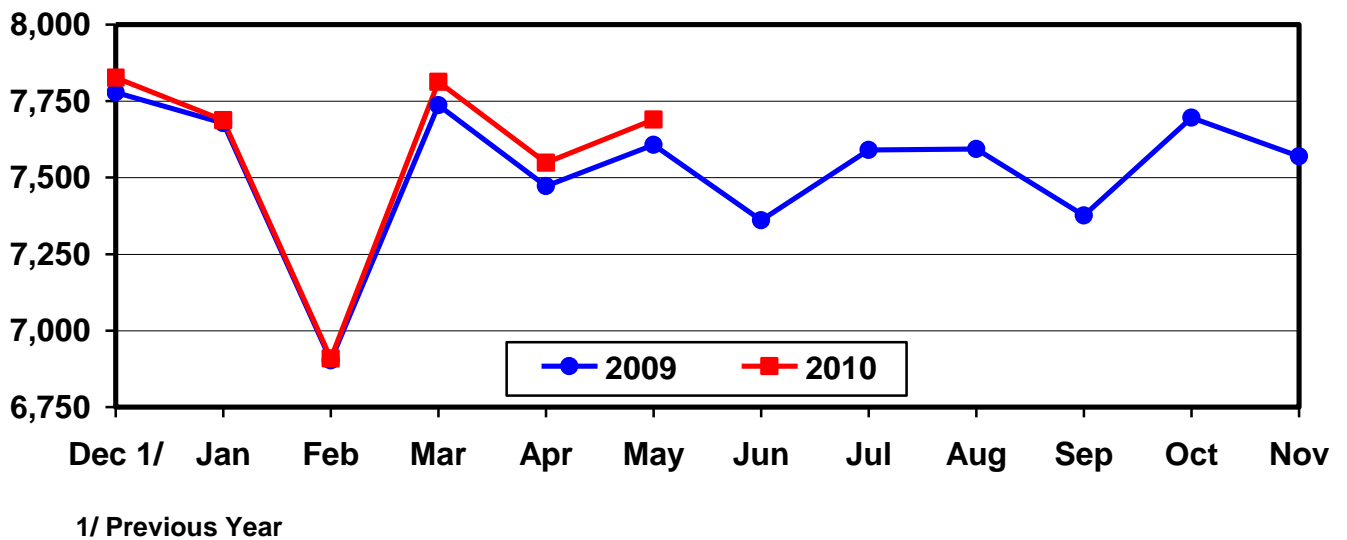
## U.S. Average Number of Layers During the Month

Million Layers



## U.S. All Egg Production During the Month

Million Eggs



**Layers and Eggs: Layers on Hand and Eggs Produced by Type,  
and Forced Molt, United States, April-May 2009-10**

Item	Unit	2009	2010 <sup>1</sup>	2010 as % of 2009
Layers During Apr <sup>2</sup>	1,000			
All Layers		340,170	339,946	100
Table Egg Type		282,880	281,125	99
Hatching Egg Type		57,290	58,821	103
Broiler-Type Hatching		54,248	55,804	103
Egg-Type Hatching		3,042	3,017	99
Eggs per 100 Layers During Apr	Number			
All Layers		2,197	2,220	101
Table Egg Type		2,269	2,303	101
Hatching Egg Type		1,838	1,828	99
Broiler-Type Hatching		1,810	1,794	99
Egg-Type Hatching		2,334	2,453	105
Eggs Produced During Apr <sup>2</sup>	Million			
All Layers		7,472	7,548	101
Table Egg Type		6,419	6,473	101
Hatching Egg Type		1,053	1,075	102
Broiler-Type Hatching		982	1,001	102
Egg-Type Hatching		71	74	104
Layers on May 1 <sup>2</sup>	1,000			
All Layers		339,239	338,203	100
Table Egg Type		282,094	279,046	99
Hatching Egg Type		57,145	59,157	104
Broiler-Type Hatching		54,135	56,163	104
Egg-Type Hatching		3,010	2,994	99
Eggs per 100 Layers on May 1	Number			
All Layers		72.4	73.2	101
Table Egg Type		74.6	75.7	101
Hatching Egg Type		61.3	60.9	99
Broiler-Type Hatching		60.3	59.8	99
Egg-Type Hatching		79.8	80.8	101
Forced Molt Layers on May 1	Percent			
Percent Being Molted		4.5	4.2	93
Percent with Molt Completed		20.7	21.2	102
Layers Sold for Slaughter During Apr	1,000	14,385	14,382	100
Layers Rendered, Died, Destroyed, Composted or Disappeared For Any Reason During Apr	1,000	8,215	9,350	114
Pullets on May 1	1,000	100,174	101,502	101
Pullets Added During Apr <sup>3</sup>	1,000	21,237	20,982	99

<sup>1</sup> Revised.

<sup>2</sup> Totals may not add due to rounding.

<sup>3</sup> Pullet chicks less than 3 days old added to pullet flocks.

**Layers and Eggs: Layers on Hand and Eggs Produced by Type,  
and Forced Molt, United States, May-June 2009-10**

Item	Unit	2009	2010	2010 as % of 2009
Layers During May <sup>1</sup>	1,000			
All Layers		337,116	337,867	100
Table Egg Type		279,973	279,172	100
Hatching Egg Type		57,143	58,695	103
Broiler-Type Hatching		54,183	55,724	103
Egg-Type Hatching		2,960	2,971	100
Eggs per 100 Layers During May	Number			
All Layers		2,256	2,276	101
Table Egg Type		2,327	2,357	101
Hatching Egg Type		1,911	1,891	99
Broiler-Type Hatching		1,881	1,861	99
Egg-Type Hatching		2,466	2,457	100
Eggs Produced During May <sup>1</sup>	Million			
All Layers		7,607	7,690	101
Table Egg Type		6,515	6,580	101
Hatching Egg Type		1,092	1,110	102
Broiler-Type Hatching		1,019	1,037	102
Egg-Type Hatching		73	73	100
Layers on Jun 1 <sup>1</sup>	1,000			
All Layers		334,953	337,498	101
Table Egg Type		277,829	279,283	101
Hatching Egg Type		57,124	58,215	102
Broiler-Type Hatching		54,216	55,274	102
Egg-Type Hatching		2,908	2,941	101
Eggs per 100 Layers on Jun 1	Number			
All Layers		73.1	73.6	101
Table Egg Type		75.4	76.2	101
Hatching Egg Type		61.7	60.9	99
Broiler-Type Hatching		60.8	60.0	99
Egg-Type Hatching		79.2	77.8	98
Forced Molt Layers on Jun 1	Percent			
Percent Being Molted		3.4	3.4	100
Percent with Molt Completed		21.4	22.5	105
Layers Sold for Slaughter During May	1,000	14,955	12,935	86
Layers Rendered, Died, Destroyed, Composted or Disappeared For Any Reason During May	1,000	8,934	7,464	84
Pullets on Jun 1	1,000	101,717	102,834	101
Pullets Added During May <sup>2</sup>	1,000	21,954	22,154	101

<sup>1</sup> Totals may not add due to rounding.

<sup>2</sup> Pullet chicks less than 3 days old added to pullet flocks.

**Layers and Eggs: Layers on Hand and Eggs Produced by State  
and United States, During April 2009-10**

State	Table Egg Layers in Flocks 30,000 and Above		All Layers		Eggs per 100 for All Layers	
	2009	2010	2009	2010	2009	2010 <sup>1</sup>
	<i>1,000</i>	<i>1,000</i>	<i>1,000</i>	<i>1,000</i>	<i>Number</i>	<i>Number</i>
AL	1,358	1,338	9,324	9,855	1,898	1,847
AR	3,422	3,252	12,467	12,283	1,957	1,978
CA	19,476	19,205	19,774	19,512	2,190	2,255
CO	3,293	3,227	3,772	3,766	2,466	2,363
CT	2,819	2,609	2,884	2,683	2,323	2,311
FL	9,514	9,065	9,894	9,382	2,244	2,238
GA	9,042	8,609	17,779	17,492	2,081	2,110
HI	312	255	339	300	1,740	1,833
IL	4,539	4,403	4,729	4,622	2,263	2,272
IN	23,283	22,923	24,091	23,686	2,262	2,292
IA	52,811	53,563	53,742	54,442	2,207	2,263
ME	3,330	3,575	3,417	3,630	2,136	2,397
MD	2,024	2,118	2,173	2,253	2,071	2,219
MI	9,626	10,046	9,790	10,216	2,257	2,418
MN	9,753	9,865	10,250	10,355	2,244	2,231
MS	1,506	1,389	6,101	6,096	1,967	1,969
MO	5,780	5,726	7,064	7,069	2,336	2,263
NE	9,716	9,368	9,766	9,418	2,324	2,389
NY	3,881	3,560	4,096	3,787	2,441	2,403
NC	5,533	6,008	12,784	13,586	2,042	1,987
OH	26,846	27,039	27,293	27,547	2,224	2,218
OR	2,375	2,159	2,515	2,307	2,465	2,427
PA	21,634	22,419	22,774	23,539	2,380	2,426
SC	3,059	3,076	4,388	4,356	2,028	2,089
SD	2,332	2,336	2,372	2,376	2,277	2,273
TX	14,619	13,510	19,164	18,090	2,192	2,184
UT <sup>2</sup>		3,388		3,418		2,194
VA	1,151	1,232	2,886	3,511	2,010	1,937
WA	6,050	6,272	6,165	6,387	2,287	2,317
WI	4,420	4,277	5,005	4,868	2,298	2,280
Oth Sts <sup>3</sup>	14,925	10,821	23,372	19,114	2,105	2,124
US	278,429	276,633	340,170	339,946	2,197	2,220

<sup>1</sup> Revised.

<sup>2</sup> Included in Oth Sts in 2009.

<sup>3</sup> Not published separately to avoid disclosing data for individual operations.



**Layers and Eggs: Layers on Hand and Eggs Produced by State  
and United States, During May 2009-10**

State	Table Egg Layers in Flocks 30,000 and Above		All Layers		Eggs per 100 for All Layers	
	2009	2010	2009	2010	2009	2010
	<i>1,000</i>	<i>1,000</i>	<i>1,000</i>	<i>1,000</i>	<i>Number</i>	<i>Number</i>
AL	1,302	1,394	9,269	9,946	1,942	1,900
AR	3,324	3,184	12,250	12,048	2,016	2,025
CA	19,448	19,105	19,754	19,411	2,253	2,313
CO	3,243	3,124	3,721	3,636	2,580	2,448
CT	2,764	2,586	2,826	2,657	2,371	2,333
FL	9,234	8,744	9,605	9,088	2,311	2,223
GA	8,888	8,360	17,486	17,216	2,110	2,132
HI	306	248	333	293	1,832	1,877
IL	4,388	4,391	4,571	4,607	2,385	2,279
IN	22,841	22,793	23,583	23,540	2,336	2,358
IA	52,863	53,379	53,755	54,254	2,271	2,326
ME	3,326	3,548	3,419	3,603	2,164	2,470
MD	1,988	2,110	2,131	2,240	2,065	2,321
MI	9,620	9,961	9,787	10,126	2,319	2,489
MN	9,599	9,804	10,096	10,276	2,288	2,326
MS	1,428	1,398	6,178	6,247	2,023	2,017
MO	5,907	5,905	7,208	7,259	2,372	2,328
NE	9,521	9,317	9,571	9,367	2,466	2,498
NY	3,836	3,674	4,050	3,891	2,519	2,467
NC	5,492	6,069	12,773	13,635	2,153	2,010
OH	26,453	26,875	26,910	27,386	2,278	2,264
OR	2,357	2,104	2,506	2,253	2,474	2,441
PA	21,349	22,428	22,457	23,535	2,422	2,494
SC	3,163	2,881	4,537	4,160	2,006	2,139
SD	2,341	2,333	2,381	2,373	2,310	2,276
TX	14,066	13,385	18,629	17,928	2,238	2,248
UT <sup>1</sup>		3,341		3,371		2,284
VA	1,065	1,200	2,865	3,491	2,059	2,005
WA	6,171	6,192	6,286	6,307	2,354	2,299
WI	4,321	4,070	4,905	4,667	2,283	2,421
Oth Sts <sup>2</sup>	14,918	10,777	23,274	19,056	2,183	2,183
US	275,522	274,680	337,116	337,867	2,256	2,276

<sup>1</sup> Included in Oth Sts in 2009.

<sup>2</sup> Not published separately to avoid disclosing data for individual operations.

**Egg Production: By Type, State, and United States,  
April 2009-10**

State	Total Production <sup>1</sup>		Table Eggs <sup>2</sup>		Hatching Eggs <sup>2</sup>	
	2009	2010 <sup>3</sup>	2009	2010 <sup>3</sup>	2009	2010
	<i>Million Eggs</i>	<i>Million Eggs</i>	<i>Million Eggs</i>	<i>Million Eggs</i>	<i>Million Eggs</i>	<i>Million Eggs</i>
AL	177	182	32	31	145	151
AR	244	243	83	78	161	165
CA	433	440				
CO	93	89				
CT	67	62				
FL	222	210	215	206	7	4
GA	370	369	209	200	161	169
HI	5.9	5.5	5.9	5.5	0	0
IL	107	105	104	102	3	3
IN	545	543	530	529	15	14
IA	1,186	1,232	1,171	1,218	15	14
ME	73	87				
MD	45	50	43	49	2	1
MI	221	247				
MN	230	231	222	223	8	8
MS	120	120	35	34	85	86
MO	165	160				
NE	227	225	227	225	0	0
NY	100	91				
NC	261	270	135	138	126	132
OH	607	611				
OR	62	56	60	54	2	2
PA	542	571	522	551	20	20
SC	89	91	67	70	22	21
SD	54	54	54	54	0	0
TX	420	395				
UT <sup>4</sup>		75		75		0
VA	58	68	28	27	30	41
WA	141	148				
WI	115	111				
Oth Sts <sup>5</sup>	492	406	360	281	132	125
US <sup>1</sup>	7,472	7,548	6,419	6,473	1,053	1,075

<sup>1</sup> Totals may not add due to rounding.

<sup>2</sup> Data by type of flock not shown for some States to avoid disclosing individual operations, data included in US totals.

<sup>3</sup> Revised.

<sup>4</sup> Included in Oth Sts in 2009.

<sup>5</sup> Not published separately to avoid disclosing data for individual operations.

**Egg Production: By Type, State, and United States,  
May 2009-10**

State	Total Production <sup>1</sup>		Table Eggs <sup>2</sup>		Hatching Eggs <sup>2</sup>	
	2009	2010	2009	2010	2009	2010
	<i>Million Eggs</i>	<i>Million Eggs</i>	<i>Million Eggs</i>	<i>Million Eggs</i>	<i>Million Eggs</i>	<i>Million Eggs</i>
AL	180	189	30	34	150	155
AR	247	244	81	74	166	170
CA	445	449				
CO	96	89				
CT	67	62				
FL	222	202	216	197	6	5
GA	369	367	204	193	165	174
HI	6.1	5.5	6.1	5.5	0	0
IL	109	105	106	102	3	3
IN	551	555	537	541	14	14
IA	1,221	1,262	1,206	1,248	15	14
ME	74	89				
MD	44	52	42	50	2	2
MI	227	252				
MN	231	239	223	231	8	8
MS	125	126	34	34	91	92
MO	171	169				
NE	236	234	236	234	0	0
NY	102	96				
NC	275	274	142	141	133	133
OH	613	620				
OR	62	55	60	53	2	2
PA	544	587	524	568	20	19
SC	91	89	68	67	23	22
SD	55	54	55	54	0	0
TX	417	403				
UT <sup>3</sup>		77		77		0
VA	59	70	26	27	33	43
WA	148	145				
WI	112	113				
Oth Sts <sup>4</sup>	508	416	370	287	138	129
US <sup>1</sup>	7,607	7,690	6,515	6,580	1,092	1,110

<sup>1</sup> Totals may not add due to rounding.

<sup>2</sup> Data by type of flock not shown for some States to avoid disclosing individual operations, data included in US totals.

<sup>3</sup> Included in Oth Sts in 2009.

<sup>4</sup> Not published separately to avoid disclosing data for individual operations.

**Forced Molt: Percent of All Layers by Month,  
United States, 2009-10**

Month	Percent Being Molted <sup>1</sup>		Percent with Molt Completed <sup>1</sup>	
	2009	2010	2009	2010
	<i>Percent</i>	<i>Percent</i>	<i>Percent</i>	<i>Percent</i>
Jan	3.3	2.7	21.3	20.6
Feb	3.4	3.6	21.6	20.1
Mar	3.4	3.2	21.5	21.0
Apr	2.1	2.6	21.8	21.1
May <sup>2</sup>	4.5	4.2	20.7	21.2
Jun	3.4	3.4	21.4	22.5
Jul	3.4		20.8	
Aug	2.7		21.4	
Sep	2.9		21.2	
Oct	3.5		21.1	
Nov	2.3		21.9	
Dec	1.8		22.2	

<sup>1</sup> As of first of month.

<sup>2</sup> Revised 2010 only.

**Forced Molt: Percent of All Layers by State  
and United States, June 1, 2009-10**

State	Percent Being Molted <sup>1</sup>		Percent with Molt Completed <sup>1</sup>	
	2009	2010	2009	2010
	<i>Percent</i>	<i>Percent</i>	<i>Percent</i>	<i>Percent</i>
AL	1.5	1.5	6.0	7.0
AR	2.5	3.5	10.0	9.0
CA	5.5	5.5	29.5	30.5
CO	6.0	3.5	16.0	15.0
CT	0.0	0.0	13.0	5.5
FL	7.5	10.5	28.0	33.5
GA	4.5	5.5	12.0	15.0
HI	11.0	9.0	52.0	48.5
IL	5.0	11.5	34.0	18.5
IN	2.5	1.5	36.0	33.5
IA	2.0	3.5	33.5	40.5
ME	0.0	0.0	0.0	0.0
MD	2.0	6.5	22.5	17.5
MI	4.5	4.5	26.5	22.5
MN	3.0	0.0	23.5	23.5
MS	3.0	2.5	8.5	7.5
MO	2.0	2.5	14.0	23.5
NE	0.0	0.0	1.5	2.0
NY	2.5	1.0	5.5	10.0
NC	0.0	2.0	10.5	12.5
OH	6.5	2.0	18.5	20.0
OR	6.0	4.0	34.5	25.0
PA	4.0	3.0	12.0	12.5
SC	4.5	1.5	18.0	17.0
SD	2.5	6.0	27.0	29.0
TX	4.5	3.5	16.5	14.0
UT <sup>2</sup>		4.0		44.5
VA	0.0	2.0	8.5	14.0
WA	7.0	9.0	30.0	29.5
WI	2.0	2.5	32.5	31.0
Oth Sts <sup>3</sup>	3.4	3.5	21.2	17.6
US	3.4	3.4	21.4	22.5

<sup>1</sup> As of first of month.

<sup>2</sup> Included in Oth Sts in 2009.

<sup>3</sup> Not published separately to avoid disclosing data for individual operations.

**Hatchery Production: Eggs in Incubators, Chicks Hatched,  
and Placements by Type, United States, May-June 2009-10**

Item	2009	2010	2010 as % of 2009
	<i>1,000</i>	<i>1,000</i>	<i>Percent</i>
Egg-Type			
Eggs in Incubators on Jun 1	39,383	39,294	100
Chicks Hatched During May	40,758	43,075	106
Chicks Hatched Jan thru May	199,896	214,643	107
Pullets Hatched During May for Intended Placements in Hatchery Supply Flocks	275	230	84
7-18 Months Earlier <sup>1</sup>	2,968	3,322	112
Broiler-Type			
Eggs in Incubators on Jun 1	640,055	655,279	102
Chicks Hatched During May	789,812	797,833	101
Chicks Hatched Jan thru May	3,818,779	3,827,403	100
Pullets Hatched During May for Intended Placements in Hatchery Supply Flocks	7,658	8,012	105
7-15 Months Earlier <sup>2</sup>	65,203	61,918	95

<sup>1</sup> 2010 includes pullet chicks hatched Nov 2008 through Oct 2009.

<sup>2</sup> 2010 includes pullet chicks hatched Feb 2009 through Oct 2009.

**Egg-Type Eggs in Incubators: By Region and United States,  
June 1, 2009-10**

Region	2009	2010	2010 as % of 2009
	<i>1,000</i>	<i>1,000</i>	<i>Percent</i>
North Atlantic	5,149	4,824	94
E North Central	8,513	8,996	106
W North Central	9,258	9,296	100
South Atlantic	3,680	4,716	128
South Central	5,539	4,987	90
West	7,244	6,475	89
US	39,383	39,294	100

**Egg-Type Chicks Hatched: By Month, United States, 2009-10**

Month	By Months			Cumulative		
	2009	2010	2010 as % of 2009	2009	2010	2010 as % of 2009
	<i>1,000</i>	<i>1,000</i>	<i>Percent</i>	<i>1,000</i>	<i>1,000</i>	<i>Percent</i>
Jan	37,812	38,794	103	37,812	38,794	103
Feb	36,795	40,120	109	74,607	78,914	106
Mar	41,737	45,151	108	116,344	124,065	107
Apr	42,794	47,503	111	159,138	171,568	108
May	40,758	43,075	106	199,896	214,643	107
Jun	41,968			241,864		
Jul	36,213			278,077		
Aug	37,945			316,022		
Sep	40,515			356,537		
Oct	37,566			394,103		
Nov	34,512			428,615		
Dec	39,554			468,169		

**Intended Placements: Egg-Type Pullet Chicks for Hatchery Supply  
Flocks by Month and Total, United States, 2009-10**

Month	Pullet Chicks Hatched		2010 as % of 2009	Cumulative Potential Plcmts Relative to Current Supply Flocks 7-18 Months Earlier <sup>1</sup>	
	2009	2010		2009	2010
	<i>1,000</i>	<i>1,000</i>	<i>Percent</i>	<i>1,000</i>	<i>1,000</i>
Jan	240	227	95	2,907	3,198
Feb	256	296	116	2,968	3,296
Mar	277	260	94	2,969	3,308
Apr	307	232	76	2,879	3,318
May	275	230	84	2,968	3,322
Jun	321			3,004	3,295
Jul	342			2,958	3,405
Aug	291			3,000	3,392
Sep	220			2,985	3,432
Oct	277			3,017	3,415
Nov	290			3,060	3,340
Dec	309			3,108	3,295
Total	3,405				

<sup>1</sup> For May 2010, includes breeder pullet chicks hatched Nov 2008 through Oct 2009. The 7-18 months represent the first laying cycle. Molting and additional laying cycles will increase the cumulative potential placements.

**Broiler-Type Eggs in Incubators: By Region  
and United States, June 1, 2009-10**

Region	2009	2010	2010 as % of 2009
	<i>1,000</i>	<i>1,000</i>	<i>Percent</i>
North Atlantic	12,140	12,740	105
E North Central	12,389	12,475	101
W North Central	29,791	30,079	101
South Atlantic	233,142	240,360	103
South Central	327,973	335,104	102
West	24,620	24,521	100
US	640,055	655,279	102

**Broiler-Type Chicks Hatched: By State  
and United States, May 2009-10**

State	During May			Jan-May		
	2009	2010	2010 as % of 2009	2009	2010	2010 as % of 2009
	<i>1,000</i>	<i>1,000</i>	<i>Percent</i>	<i>1,000</i>	<i>1,000</i>	<i>Percent</i>
AL	111,750	112,980	101	536,627	537,633	100
AR	89,379	89,029	100	438,731	433,889	99
DE	13,557	14,172	105	62,957	62,620	99
FL	3,648	4,997	137	18,038	23,706	131
GA	116,822	117,730	101	578,604	564,446	98
KY	28,707	29,088	101	136,753	141,422	103
LA	8,727	13,047	150	53,228	62,057	117
MD	33,418	29,965	90	159,423	156,851	98
MS	67,842	71,931	106	324,508	348,736	107
NC	69,824	72,231	103	340,492	338,531	99
OK	25,891	25,128	97	122,511	121,322	99
PA	14,339	13,707	96	69,494	65,774	95
SC	20,600	20,554	100	98,794	100,120	101
TX	58,989	58,748	100	289,518	280,192	97
VA	23,415	24,542	105	108,825	114,061	105
CA, MO, TN, & WV	74,532	73,858	99	352,948	346,128	98
19 Sts <sup>1</sup>	761,440	771,707	101	3,691,451	3,697,488	100
Oth Sts <sup>2</sup>	28,372	26,126	92	127,328	129,915	102
US	789,812	797,833	101	3,818,779	3,827,403	100

<sup>1</sup> States in the weekly hatchery production estimating program.

<sup>2</sup> Not published separately to avoid disclosing data for individual operations.

**Broiler-Type Chicks Hatched: By Month, United States, 2009-10**

Month	By Months			Cumulative		
	2009	2010	2010 as % of 2009	2009	2010	2010 as % of 2009
	<i>1,000</i>	<i>1,000</i>	<i>Percent</i>	<i>1,000</i>	<i>1,000</i>	<i>Percent</i>
Jan	780,219	775,615	99	780,219	775,615	99
Feb	704,234	699,776	99	1,484,453	1,475,391	99
Mar	785,851	786,954	100	2,270,304	2,262,345	100
Apr	758,663	767,225	101	3,028,967	3,029,570	100
May	789,812	797,833	101	3,818,779	3,827,403	100
Jun	773,590			4,592,369		
Jul	784,118			5,376,487		
Aug	781,423			6,157,910		
Sep	742,769			6,900,679		
Oct	730,698			7,631,377		
Nov	705,439			8,336,816		
Dec	779,533			9,116,349		



**Intended Placements: Broiler-Type Pullet Chicks for Hatchery  
Supply Flocks by Month and Total, 2009-10**

Month	Pullet Chicks Hatched		2010 as % of 2009	Cumulative Potential Plcmts Relative to Current Supply Flocks 7-15 Months Earlier <sup>1</sup>	
	2009	2010		2009	2010
	<i>1,000</i>	<i>1,000</i>	<i>Percent</i>	<i>1,000</i>	<i>1,000</i>
US Place- ments					
Jan	7,142	7,219	101	65,952	62,833
Feb	7,215	6,994	97	65,444	62,005
Mar	6,773	6,610	98	65,535	62,142
Apr	6,240	6,538	105	65,173	62,672
May	7,658	8,012	105	65,203	61,918
Jun	7,157			64,693	62,049
Jul	6,214			64,183	61,903
Aug	7,163			64,206	62,882
Sep	7,110			63,204	61,918
Oct	6,388			62,823	61,371
Nov	7,346			62,601	61,695
Dec	6,627			62,562	62,544
Annual Total	83,033				
Total Place- ments <sup>2</sup>					
Jan	8,410	8,626	103		
Feb	8,524	8,972	105		
Mar	8,626	8,910	103		
Apr	7,746	8,031	104		
May	9,143	10,068	110		
Jun	8,830				
Jul	7,469				
Aug	8,975				
Sep	8,947				
Oct	7,883				
Nov	8,916				
Dec	8,400				
Annual Total	101,869				

<sup>1</sup> For May 2010, includes breeder pullet chicks hatched Feb 2009 through Oct 2009.

<sup>2</sup> U.S. production of intended placements worldwide.

## Reliability of Chickens and Eggs Estimates

**Survey Procedures:** Primary data for the "**Chickens and Eggs**" report are from weekly and/or monthly questionnaires sent to producers. An attempt is made to collect information for layer and egg estimates from each known contractor and independent producer who has at least 30,000 table egg layers, flocks of hatchery supply layers, or pullet only operations with at least 500 pullets. Coverage for operations with less than 30,000 table egg layers are estimated each month based on data reported in December. Approximately 650 contractors, independent egg producers, and pullet only operations are contacted each month. All known hatcheries, approximately 300, are contacted for information on a weekly and/or monthly basis.

**Estimating Procedures:** Sound statistical methodology is employed to derive estimates from the reported data. All data are analyzed for unusual values. Data from each operation are compared to their own past operating profile and to trends from similar operations. Data for missing operations are estimated based on similar operations or historical data. NASS field offices prepare these estimates by using a combination of survey indications and historic trends. Individual State estimates are reviewed by the Agricultural Statistics Board for reasonableness. Individual hatchery data are summed to State, regional, and U.S. totals.

For chicken hatcheries, chicks hatched consist of all chicks of domesticated breeds including males and chicks destined for hatchery supply flocks and research purposes. Eggs set are eggs in incubators for the purpose of hatching. The relationship of egg-type chicks hatched to chicken inventory and poultry marketings are carefully monitored. The disposition of egg-type chicks hatched prior to placement into the laying flock can vary significantly, which can make comparisons to changes in layer inventory inconsistent over time. Broiler chicks placed are specifically placed on feed for meat production. Intended placement data reported by leading breeders include pullet chicks expected from eggs sold the preceding month. The breeders in this report account for a large percentage of replacement pullets for hatchery supply flocks. Production of replacement pullets by these breeders indicates the number of pullets available to hatchery supply layer flocks several months before the pullets will actually move into the laying flocks. "Hatchery Supply Flocks" include all generations of layers which could lay eggs to supply a hatchery. This includes the generations of parents, grandparents, great-grandparents, pedigree, etc. Also included are research flocks, vaccine flocks, and specific pathogen-free flocks. The broiler cumulative potential placements are a moving total of the intended placements 7-15 months earlier. The egg-type cumulative potential placements of 7-18 months earlier represent the first laying cycle. Molting and additional laying cycles will increase the cumulative potential placements of egg-type hatching flocks.

**Revision Policy:** The previous month's estimates are subject to revision if late reports or corrected data indicates a different level. Additionally, revisions after the monthly report will be made at the end of the marketing year and published in the annual reports of "**Chickens and Eggs Summary**" and "**Hatchery Production**".

**Reliability:** Estimates are based on a census of all known contractors and independent producers who have at least 30,000 table egg layers, flocks of hatchery supply layers, pullet only operations with at least 500 pullets, or operating hatcheries and therefore, have no sampling error. However, estimates are subject to errors such as omission, duplication, and mistakes in reporting, recording, and processing the data. While these errors cannot be measured directly, they are minimized through strict quality controls in the data collection process and a careful review of all reported data for consistency and reasonableness.

To assist in evaluating the reliability of the estimates in this report, the "Root Mean Square Error" is shown for selected items in the following table. The "Root Mean Square Error" is a statistical measure based on past performance and is computed using the differences between first and final estimates. The "Root Mean Square Error" for all layers over the past 24 months is 0.1 percent. This means that chances are 2 out of 3 that the final estimate will not be above or below the current estimate of 338 million layers by more than 0.1 percent. Chances are 9 out of 10 that the difference will not exceed 0.2 percent.

**Reliability of Layer and Egg Estimates**

Item	Root Mean Square Error	90 Percent Confidence Level		Difference Between First and Latest Estimates			Number of Months	
				Average	Smallest	Largest	First Above Latest	First Below Latest
				<i>1,000</i>	<i>1,000</i>	<i>1,000</i>	<i>Number</i>	<i>Number</i>
All Layers	0.1	0.2	8	374	0	841	10	13
Eggs	0.1	0.3	0	10	0	21	9	14

**Regional Listing**

North Atlantic: CT, ME, MA, NH, NJ, NY, PA, RI, VT.

East North Central: IL, IN, MI, OH, WI.

West North Central: IA, KS, MN, MO, NE, ND, SD.

South Atlantic: DE, FL, GA, MD, NC, SC, VA, WV.

South Central: AL, AR, KY, LA, MS, OK, TN, TX.

West: AK, AZ, CA, CO, HI, ID, MT, NM, NV, OR, UT, WA, WY.

**Terms and Definitions of Chickens and Eggs Estimates**

**All Layers** includes both table egg and hatching egg flocks regardless of size.

**Intended Placements** are reported by leading breeders. Coverage may not be 100 percent. Includes expected pullet chicks from eggs sold during the preceding month at the rate of 125 pullet chicks per case of 30 dozen eggs.

**Information Contacts**

Listed below are the commodity specialists in the Livestock Branch of the National Agricultural Statistics Service to contact for additional information.

- Dan Kerestes, Chief, Livestock Branch .....(202) 720-3570
- Bruce Boess, Head, Poultry and Specialty Commodities Section.....(202) 720-4447
- Doug Bounds – Poultry Slaughter, Turkey Hatchery, Turkeys Raised.....(202) 690-3237
- David Colwell – Cold Storage.....(202) 720-8784
- Chris Hawthorn – Catfish Processing, Catfish Production, Trout Production,  
        Census of Aquaculture, Egg Products, Mink .....(202) 720-0585
- Kim Linonis – Layers, Eggs.....(202) 690-8632
- Troy Marshall – Broiler Hatchery, Chicken Hatchery, Honey.....(202) 720-3244

## ACCESS TO REPORTS!!

---

For your convenience, there are several ways to obtain NASS reports, data products, and services:

### INTERNET ACCESS

All NASS reports are available free of charge. For free access, connect to the Internet and go to the NASS Home Page at: [www.nass.usda.gov](http://www.nass.usda.gov).

### E-MAIL SUBSCRIPTION

All NASS reports are available by subscription free of charge direct to your e-mail address. Starting with the NASS Home Page at [www.nass.usda.gov](http://www.nass.usda.gov), under the right navigation, *Receive reports by Email*, click on **National** or **State**. Follow the instructions on the screen.

-----

### PRINTED REPORTS OR DATA PRODUCTS

**CALL OUR TOLL-FREE ORDER DESK: 800-999-6779 (U.S. and Canada)**  
**Other areas, please call 703-605-6220      FAX: 703-605-6880**  
**(Visa, MasterCard, check, or money order acceptable for payment.)**

-----

### ASSISTANCE

For **assistance** with general agricultural statistics or further information about NASS or its products or services, contact the **Agricultural Statistics Hotline** at **800-727-9540**, 7:30 a.m. to 4:00 p.m. ET, or e-mail: [nass@nass.usda.gov](mailto:nass@nass.usda.gov).

The U.S. Department of Agriculture (USDA) prohibits discrimination in all its programs and activities on the basis of race, color, national origin, age, disability, and where applicable, sex, marital status, familial status, parental status, religion, sexual orientation, genetic information, political beliefs, reprisal, or because all or a part of an individual's income is derived from any public assistance program. (Not all prohibited bases apply to all programs.) Persons with disabilities who require alternative means for communication of program information (Braille, large print, audiotape, etc.) should contact USDA's TARGET Center at (202) 720-2600 (voice and TDD).

To file a complaint of discrimination, write to USDA, Director, Office of Civil Rights, 1400 Independence Avenue, S.W., Washington, D.C. 20250-9410, or call (800) 795-3272 (voice) or (202) 720-6382 (TDD). USDA is an equal opportunity provider and employer.