

Chickens and Eggs

Released July 23, 2010, by the National Agricultural Statistics Service (NASS), Agricultural Statistics Board, U.S. Department of Agriculture. For information on "Layers and Eggs" call Kim Linonis at (202) 690-8632, for "Chicks Hatched" call Troy Marshall at (202) 720-3244, office hours 7:30 a.m. to 4:00 p.m. ET.

June Egg Production Up 1 Percent

U.S. egg production totaled 7.45 billion during June 2010, up 1 percent from last year. Production included 6.38 billion table eggs, and 1.07 billion hatching eggs, of which 1.00 billion were broiler-type and 69 million were egg-type. The total number of layers during June 2010 averaged 338 million, up 1 percent from last year. June egg production per 100 layers was 2,203 eggs, unchanged from June 2009.

All layers in the U.S. on July 1, 2010 totaled 339 million, up 2 percent from last year. The 339 million layers consisted of 281 million layers producing table or market type eggs, 55.6 million layers producing broiler-type hatching eggs, and 2.91 million layers producing egg-type hatching eggs. Rate of lay per day on July 1, 2010, averaged 73.2 eggs per 100 layers, down 1 percent from July 1, 2009.

Egg-Type Chicks Hatched Up 2 Percent

Egg-type chicks hatched during June 2010 totaled 42.6 million, up 2 percent from June 2009. Eggs in incubators totaled 37.5 million on July 1, 2010, up 13 percent from a year ago.

Domestic placements of egg-type pullet chicks for future hatchery supply flocks by leading breeders totaled 318 thousand during June 2010, down 1 percent from June 2009.

Broiler-Type Chicks Hatched Up 2 Percent

Broiler-type chicks hatched during June 2010 totaled 787 million, up 2 percent from June 2009. Eggs in incubators totaled 652 million on July 1, 2010, up 3 percent from a year earlier.

Leading breeders placed 7.59 million broiler-type pullet chicks for future domestic hatchery supply flocks during June 2010, up 6 percent from June 2009.

Contents

	Page
U.S. Average Number of Layers on Hand and Egg Production.....	1
U.S. Layers on Hand and Eggs Produced by Type, Forced Molt, and Pullets.....	3
Layers on Hand and Eggs Produced by State.....	5
Egg Production by Type and State	7
Forced Molt	9
U.S. Hatchery Production Summary	10
Egg-Type Hatchery	11
Egg-Type Intended Placements	12
Broiler-Type Hatchery	12
Broiler-Type Intended Placements.....	14
Reliability of Chickens and Eggs Estimates.....	15
Regional Listing	16
Terms and Definitions of Chickens and Eggs Estimates.....	16
Information Contacts.....	16

**All Layers: Average Number on Hand During the Month,
United States, 2009-10**

Month	2009	2010
	<i>1,000 Layers</i>	<i>1,000 Layers</i>
Dec ¹	340,638	339,744
Jan	341,400	339,009
Feb	341,068	339,086
Mar	340,914	340,869
Apr	340,170	339,946
May ²	337,116	337,930
Jun	334,032	338,326
Jul	332,740	
Aug	332,612	
Sep	333,885	
Oct	335,819	
Nov	338,121	

¹ December preceding year.

² Revised 2010 only.

**Eggs: Production During the Month by Type,
United States, 2009-10**

Month	Total Eggs ¹		Table Eggs		Hatching Eggs	
	2009	2010	2009	2010	2009	2010
	<i>Million Eggs</i>	<i>Million Eggs</i>	<i>Million Eggs</i>	<i>Million Eggs</i>	<i>Million Eggs</i>	<i>Million Eggs</i>
Dec ²	7,778	7,827	6,711	6,758	1,068	1,068
Jan	7,678	7,688	6,603	6,606	1,075	1,082
Feb	6,903	6,909	5,917	5,923	985	986
Mar	7,737	7,813	6,645	6,710	1,093	1,102
Apr	7,472	7,548	6,419	6,473	1,053	1,075
May ³	7,607	7,685	6,515	6,575	1,092	1,110
Jun	7,360	7,453	6,301	6,384	1,059	1,069
Jul	7,590		6,505		1,085	
Aug	7,593		6,518		1,075	
Sep	7,376		6,349		1,027	
Oct	7,696		6,638		1,059	
Nov	7,569		6,541		1,027	
During Year ¹	90,359		77,664		12,698	

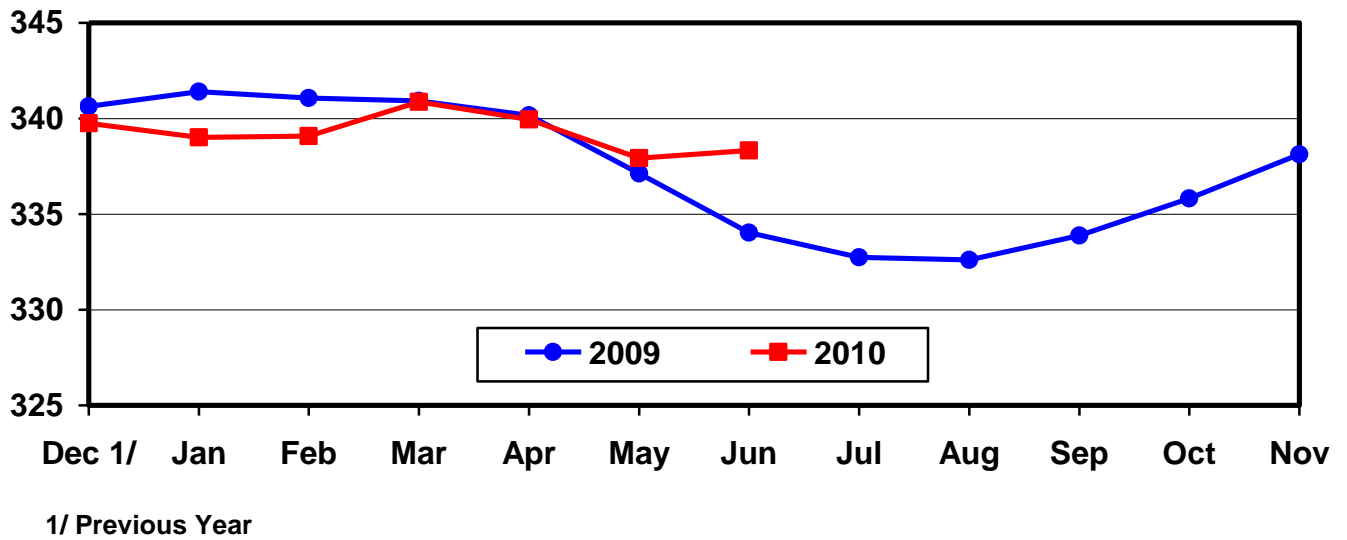
¹ Totals may not add due to rounding.

² December preceding year.

³ Revised 2010 only.

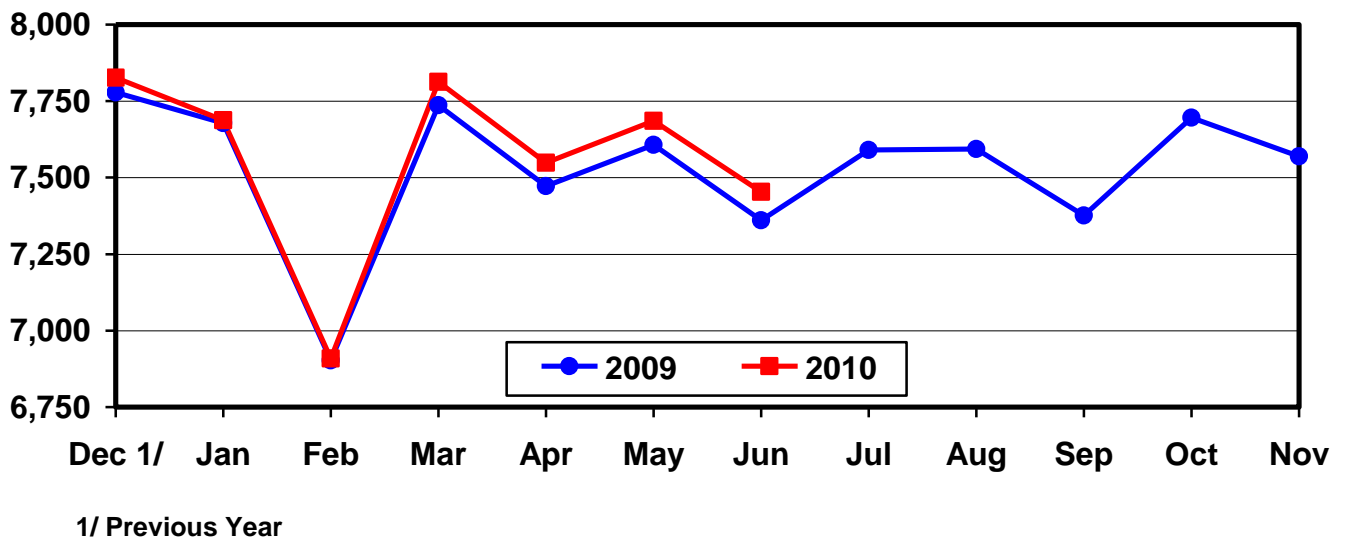
U.S. Average Number of Layers During the Month

Million Layers



U.S. All Egg Production During the Month

Million Eggs



**Layers and Eggs: Layers on Hand and Eggs Produced by Type,
and Forced Molt, United States, May-June 2009-10**

Item	Unit	2009	2010 ¹	2010 as % of 2009
Layers During May ²	1,000			
All Layers		337,116	337,930	100
Table Egg Type		279,973	279,260	100
Hatching Egg Type		57,143	58,670	103
Broiler-Type Hatching		54,183	55,699	103
Egg-Type Hatching		2,960	2,971	100
Eggs per 100 Layers During May	Number			
All Layers		2,256	2,274	101
Table Egg Type		2,327	2,354	101
Hatching Egg Type		1,911	1,892	99
Broiler-Type Hatching		1,881	1,862	99
Egg-Type Hatching		2,466	2,457	100
Eggs Produced During May ²	Million			
All Layers		7,607	7,685	101
Table Egg Type		6,515	6,575	101
Hatching Egg Type		1,092	1,110	102
Broiler-Type Hatching		1,019	1,037	102
Egg-Type Hatching		73	73	100
Layers on Jun 1 ²	1,000			
All Layers		334,953	337,624	101
Table Egg Type		277,829	279,460	101
Hatching Egg Type		57,124	58,164	102
Broiler-Type Hatching		54,216	55,223	102
Egg-Type Hatching		2,908	2,941	101
Eggs per 100 Layers on Jun 1	Number			
All Layers		73.1	73.4	100
Table Egg Type		75.4	76.1	101
Hatching Egg Type		61.7	60.9	99
Broiler-Type Hatching		60.8	60.0	99
Egg-Type Hatching		79.2	77.8	98
Forced Molt Layers on Jun 1	Percent			
Percent Being Molted		3.4	3.3	97
Percent with Molt Completed		21.4	22.6	106
Layers Sold for Slaughter During May	1,000	14,955	12,533	84
Layers Rendered, Died, Destroyed, Composted or Disappeared For Any Reason During May	1,000	8,934	7,704	86
Pullets on Jun 1	1,000	101,717	103,191	101
Pullets Added During May ³	1,000	21,954	22,759	104

¹ Revised.

² Totals may not add due to rounding.

³ Pullet chicks less than 3 days old added to pullet flocks.

**Layers and Eggs: Layers on Hand and Eggs Produced by Type,
and Forced Molt, United States, June-July 2009-10**

Item	Unit	2009	2010	2010 as % of 2009
Layers During Jun ¹	1,000			
All Layers		334,032	338,326	101
Table Egg Type		276,976	280,000	101
Hatching Egg Type		57,056	58,326	102
Broiler-Type Hatching		54,152	55,398	102
Egg-Type Hatching		2,904	2,928	101
Eggs per 100 Layers During Jun	Number			
All Layers		2,203	2,203	100
Table Egg Type		2,275	2,280	100
Hatching Egg Type		1,856	1,833	99
Broiler-Type Hatching		1,826	1,805	99
Egg-Type Hatching		2,410	2,357	98
Eggs Produced During Jun ¹	Million			
All Layers		7,360	7,453	101
Table Egg Type		6,301	6,384	101
Hatching Egg Type		1,059	1,069	101
Broiler-Type Hatching		989	1,000	101
Egg-Type Hatching		70	69	99
Layers on Jul 1 ¹	1,000			
All Layers		333,064	338,986	102
Table Egg Type		276,103	280,521	102
Hatching Egg Type		56,961	58,465	103
Broiler-Type Hatching		54,073	55,558	103
Egg-Type Hatching		2,888	2,907	101
Eggs per 100 Layers on Jul 1	Number			
All Layers		73.6	73.2	99
Table Egg Type		76.2	75.8	99
Hatching Egg Type		61.4	61.1	100
Broiler-Type Hatching		60.5	60.2	100
Egg-Type Hatching		79.3	78.7	99
Forced Molt Layers on Jul 1	Percent			
Percent Being Molted		3.4	3.2	94
Percent with Molt Completed		20.8	22.4	108
Layers Sold for Slaughter During Jun	1,000	14,112	13,933	99
Layers Rendered, Died, Destroyed, Composted or Disappeared For Any Reason During Jun	1,000	7,843	7,880	100
Pullets on Jul 1	1,000	101,790	102,462	101
Pullets Added During Jun ²	1,000	21,075	23,071	109

¹ Totals may not add due to rounding.

² Pullet chicks less than 3 days old added to pullet flocks.

**Layers and Eggs: Layers on Hand and Eggs Produced by State
and United States, During May 2009-10**

State	Table Egg Layers in Flocks 30,000 and Above		All Layers		Eggs per 100 for All Layers	
	2009	2010 ¹	2009	2010 ¹	2009	2010 ¹
	<i>1,000</i>	<i>1,000</i>	<i>1,000</i>	<i>1,000</i>	<i>Number</i>	<i>Number</i>
AL	1,302	1,394	9,269	9,946	1,942	1,900
AR	3,324	3,184	12,250	12,012	2,016	2,023
CA	19,448	19,105	19,754	19,411	2,253	2,313
CO	3,243	3,124	3,721	3,636	2,580	2,448
CT	2,764	2,471	2,826	2,542	2,371	2,400
FL	9,234	8,744	9,605	9,088	2,311	2,223
GA	8,888	8,360	17,486	17,201	2,110	2,134
HI	306	248	333	293	1,832	1,877
IL	4,388	4,391	4,571	4,607	2,385	2,279
IN	22,841	22,793	23,583	23,540	2,356	2,358
IA	52,863	53,554	53,755	54,429	2,271	2,326
ME	3,326	3,548	3,419	3,603	2,164	2,470
MD	1,988	2,110	2,131	2,240	2,065	2,321
MI	9,620	9,967	9,787	10,132	2,319	2,398
MN	9,599	9,804	10,096	10,276	2,288	2,326
MS	1,428	1,398	6,178	6,247	2,023	2,017
MO	5,907	5,905	7,208	7,259	2,372	2,328
NE	9,521	9,317	9,571	9,367	2,466	2,498
NY	3,836	3,674	4,050	3,891	2,519	2,467
NC	5,492	6,069	12,773	13,635	2,153	2,010
OH	26,453	26,875	26,910	27,386	2,278	2,264
OR	2,357	2,104	2,506	2,253	2,474	2,441
PA	21,349	22,428	22,457	23,535	2,422	2,494
SC	3,163	2,881	4,537	4,160	2,006	2,139
SD	2,341	2,333	2,381	2,373	2,310	2,276
TX	14,066	13,385	18,629	17,928	2,238	2,248
UT ²		3,341		3,371		2,284
VA	1,065	1,222	2,865	3,513	2,059	2,021
WA	6,171	6,192	6,286	6,307	2,354	2,299
WI	4,321	4,070	4,905	4,667	2,283	2,421
Oth Sts ³	14,918	10,777	23,274	19,082	2,183	2,185
US	275,522	274,768	337,116	337,930	2,256	2,274

¹ Revised.

² Included in Oth Sts in 2009.

³ Not published separately to avoid disclosing data for individual operations.

**Layers and Eggs: Layers on Hand and Eggs Produced by State
and United States, During June 2009-10**

State	Table Egg Layers in Flocks 30,000 and Above		All Layers		Eggs per 100 for All Layers	
	2009	2010	2009	2010	2009	2010
	<i>1,000</i>	<i>1,000</i>	<i>1,000</i>	<i>1,000</i>	<i>Number</i>	<i>Number</i>
AL	1,255	1,409	9,149	9,873	1,858	1,864
AR	3,292	3,229	12,176	12,060	1,955	1,940
CA	19,114	19,180	19,424	19,487	2,234	2,268
CO	3,113	3,109	3,601	3,575	2,472	2,378
CT	2,749	2,372	2,812	2,443	2,276	2,333
FL	9,153	8,769	9,512	9,108	2,208	2,174
GA	8,782	8,196	17,495	16,974	2,035	2,091
HI	300	242	325	287	1,754	1,742
IL	4,344	4,327	4,549	4,540	2,264	2,181
IN	22,305	22,903	23,006	23,616	2,308	2,295
IA	52,679	53,674	53,542	54,531	2,215	2,232
ME	3,319	3,513	3,411	3,568	2,082	2,382
MD	1,967	2,152	2,114	2,290	2,129	2,358
MI	9,792	9,965	9,952	10,121	2,291	2,213
MN	9,567	9,880	10,085	10,364	2,201	2,277
MS	1,392	1,476	6,186	6,372	2,021	1,962
MO	6,109	5,870	7,419	7,220	2,251	2,244
NE	9,424	9,370	9,474	9,420	2,396	2,431
NY	3,821	3,854	4,038	4,067	2,402	2,385
NC	5,394	6,095	12,609	13,612	2,086	1,962
OH	26,012	27,111	26,481	27,613	2,258	2,166
OR	2,181	2,128	2,333	2,279	2,486	2,326
PA	21,334	22,697	22,403	23,803	2,375	2,432
SC	3,060	2,819	4,422	4,087	2,035	2,080
SD	2,362	2,330	2,402	2,370	2,290	2,321
TX	13,696	13,451	18,222	17,914	2,184	2,144
UT ¹		3,277		3,307		2,389
VA	1,170	1,238	2,997	3,564	1,969	1,936
WA	5,868	6,262	5,983	6,377	2,357	2,258
WI	4,221	3,869	4,792	4,466	2,254	2,373
Oth Sts ²	14,752	10,741	23,118	19,018	2,115	2,124
US	272,527	275,508	334,032	338,326	2,203	2,203

¹ Included in Oth Sts in 2009.

² Not published separately to avoid disclosing data for individual operations.

**Egg Production: By Type, State, and United States,
May 2009-10**

State	Total Production ¹		Table Eggs ²		Hatching Eggs ²	
	2009	2010 ³	2009	2010 ³	2009	2010 ³
	<i>Million Eggs</i>	<i>Million Eggs</i>	<i>Million Eggs</i>	<i>Million Eggs</i>	<i>Million Eggs</i>	<i>Million Eggs</i>
AL	180	189	30	34	150	155
AR	247	243	81	74	166	169
CA	445	449				
CO	96	89				
CT	67	61				
FL	222	202	216	197	6	5
GA	369	367	204	193	165	174
HI	6.1	5.5	6.1	5.5	0	0
IL	109	105	106	102	3	3
IN	551	555	537	541	14	14
IA	1,221	1,266	1,206	1,252	15	14
ME	74	89				
MD	44	52	42	50	2	2
MI	227	243				
MN	231	239	223	231	8	8
MS	125	126	34	34	91	92
MO	171	169				
NE	236	234	236	234	0	0
NY	102	96				
NC	275	274	142	141	133	133
OH	613	620				
OR	62	55	60	53	2	2
PA	544	587	524	568	20	19
SC	91	89	68	67	23	22
SD	55	54	55	54	0	0
TX	417	403				
UT ⁴		77		77		0
VA	59	71	26	28	33	43
WA	148	145				
WI	112	113				
Oth Sts ⁵	508	417	370	287	138	130
US ¹	7,607	7,685	6,515	6,575	1,092	1,110

¹ Totals may not add due to rounding.

² Data by type of flock not shown for some States to avoid disclosing individual operations, data included in US totals.

³ Revised.

⁴ Included in Oth Sts in 2009.

⁵ Not published separately to avoid disclosing data for individual operations.

**Egg Production: By Type, State, and United States,
June 2009-10**

State	Total Production ¹		Table Eggs ²		Hatching Eggs ²	
	2009	2010	2009	2010	2009	2010
	<i>Million Eggs</i>	<i>Million Eggs</i>	<i>Million Eggs</i>	<i>Million Eggs</i>	<i>Million Eggs</i>	<i>Million Eggs</i>
AL	170	184	28	33	142	151
AR	238	234	77	73	161	161
CA	434	442				
CO	89	85				
CT	64	57				
FL	210	198	205	194	5	4
GA	356	355	193	186	163	169
HI	5.7	5.0	5.7	5.0	0	0
IL	103	99	100	96	3	3
IN	531	542	518	530	13	12
IA	1,186	1,217	1,173	1,204	13	13
ME	71	85				
MD	45	54	43	52	2	2
MI	228	224				
MN	222	236	213	228	9	8
MS	125	125	35	36	90	89
MO	167	162				
NE	227	229	227	229	0	0
NY	97	97				
NC	263	267	135	140	128	127
OH	598	598				
OR	58	53	56	51	2	2
PA	532	579	513	560	19	19
SC	90	85	68	63	22	22
SD	55	55	55	55	0	0
TX	398	384				
UT ³		79		79		0
VA	59	69	27	27	32	42
WA	141	144				
WI	108	106				
Oth Sts ⁴	489	404	355	279	134	125
US ¹	7,360	7,453	6,301	6,384	1,059	1,069

¹ Totals may not add due to rounding.

² Data by type of flock not shown for some States to avoid disclosing individual operations, data included in US totals.

³ Included in Oth Sts in 2009.

⁴ Not published separately to avoid disclosing data for individual operations.

**Forced Molt: Percent of All Layers by Month,
United States, 2009-10**

Month	Percent Being Molted ¹		Percent with Molt Completed ¹	
	2009	2010	2009	2010
	<i>Percent</i>	<i>Percent</i>	<i>Percent</i>	<i>Percent</i>
Jan	3.3	2.7	21.3	20.6
Feb	3.4	3.6	21.6	20.1
Mar	3.4	3.2	21.5	21.0
Apr	2.1	2.6	21.8	21.1
May	4.5	4.2	20.7	21.2
Jun ²	3.4	3.3	21.4	22.6
Jul	3.4	3.2	20.8	22.4
Aug	2.7		21.4	
Sep	2.9		21.2	
Oct	3.5		21.1	
Nov	2.3		21.9	
Dec	1.8		22.2	

¹ As of first of month.

² Revised 2010 only.

**Forced Molt: Percent of All Layers by State
and United States, July 1, 2009-10**

State	Percent Being Molted ¹		Percent with Molt Completed ¹	
	2009	2010	2009	2010
	<i>Percent</i>	<i>Percent</i>	<i>Percent</i>	<i>Percent</i>
AL	1.5	0.5	4.5	8.0
AR	2.0	2.0	10.5	9.5
CA	6.5	6.0	29.0	31.0
CO	1.5	2.5	16.5	17.0
CT	0.0	0.0	12.5	15.0
FL	8.0	6.5	26.5	37.0
GA	4.5	0.5	13.5	19.0
HI	9.5	9.0	53.0	48.5
IL	2.5	4.5	34.0	23.0
IN	2.0	2.0	34.5	30.0
IA	3.0	4.0	32.0	39.0
ME	0.0	0.0	0.0	0.0
MD	7.0	4.5	22.5	13.0
MI	2.0	4.0	21.5	20.5
MN	3.5	4.5	24.5	21.5
MS	1.0	1.0	10.5	8.5
MO	0.5	1.5	14.0	21.0
NE	1.0	0.0	1.5	1.0
NY	3.0	0.0	6.0	10.0
NC	0.0	0.0	8.0	14.0
OH	8.0	5.0	18.0	18.5
OR	8.0	8.5	36.0	27.5
PA	3.0	2.5	11.5	12.0
SC	2.5	0.0	19.0	17.0
SD	6.5	6.5	21.5	30.5
TX	3.0	4.5	19.0	17.0
UT ²		1.5		43.0
VA	0.0	4.0	8.0	11.0
WA	9.5	8.0	32.0	28.5
WI	2.0	5.5	28.0	32.5
Oth Sts ³	2.7	2.7	21.3	18.0
US	3.4	3.2	20.8	22.4

¹ As of first of month.

² Included in Oth Sts in 2009.

³ Not published separately to avoid disclosing data for individual operations.

**Hatchery Production: Eggs in Incubators, Chicks Hatched,
and Placements by Type, United States, June-July 2009-10**

Item	2009	2010	2010 as % of 2009
	<i>1,000</i>	<i>1,000</i>	<i>Percent</i>
Egg-Type			
Eggs in Incubators on Jul 1	33,049	37,491	113
Chicks Hatched During Jun	41,968	42,623	102
Chicks Hatched Jan thru Jun	241,864	257,266	106
Pullets Hatched During Jun for Intended Placements in Hatchery Supply Flocks	321	318	99
7-18 Months Earlier ¹	3,004	3,295	110
Broiler-Type			
Eggs in Incubators on Jul 1	632,478	652,280	103
Chicks Hatched During Jun	773,590	786,707	102
Chicks Hatched Jan thru Jun	4,592,369	4,614,110	100
Pullets Hatched During Jun for Intended Placements in Hatchery Supply Flocks	7,157	7,585	106
7-15 Months Earlier ²	64,693	62,049	96

¹ 2010 includes pullet chicks hatched Dec 2008 through Nov 2009.

² 2010 includes pullet chicks hatched Mar 2009 through Nov 2009.

**Egg-Type Eggs in Incubators: By Region and United States,
July 1, 2009-10**

Region	2009	2010	2010 as % of 2009
	<i>1,000</i>	<i>1,000</i>	<i>Percent</i>
North Atlantic	4,548	5,461	120
E North Central	6,784	7,560	111
W North Central	7,377	8,775	119
South Atlantic	3,884	4,622	119
South Central	3,833	3,557	93
West	6,623	7,516	113
US	33,049	37,491	113

Egg-Type Chicks Hatched: By Month, United States, 2009-10

Month	By Months			Cumulative		
	2009	2010	2010 as % of 2009	2009	2010	2010 as % of 2009
	<i>1,000</i>	<i>1,000</i>	<i>Percent</i>	<i>1,000</i>	<i>1,000</i>	<i>Percent</i>
Jan	37,812	38,794	103	37,812	38,794	103
Feb	36,795	40,120	109	74,607	78,914	106
Mar	41,737	45,151	108	116,344	124,065	107
Apr	42,794	47,503	111	159,138	171,568	108
May	40,758	43,075	106	199,896	214,643	107
Jun	41,968	42,623	102	241,864	257,266	106
Jul	36,213			278,077		
Aug	37,945			316,022		
Sep	40,515			356,537		
Oct	37,566			394,103		
Nov	34,512			428,615		
Dec	39,554			468,169		

**Intended Placements: Egg-Type Pullet Chicks for Hatchery Supply
Flocks by Month and Total, United States, 2009-10**

Month	Pullet Chicks Hatched		2010 as % of 2009	Cumulative Potential Plcmts Relative to Current Supply Flocks 7-18 Months Earlier ¹	
	2009	2010		2010	2011
	<i>1,000</i>	<i>1,000</i>	<i>Percent</i>	<i>1,000</i>	<i>1,000</i>
Jan	240	227	95	3,198	3,292
Feb	256	296	116	3,296	
Mar	277	260	94	3,308	
Apr	307	232	76	3,318	
May	275	230	84	3,322	
Jun	321	318	99	3,295	
Jul	342			3,405	
Aug	291			3,392	
Sep	220			3,432	
Oct	277			3,415	
Nov	290			3,340	
Dec	309			3,295	
Total	3,405				

¹ For June 2010, includes breeder pullet chicks hatched Dec 2008 through Nov 2009. The 7-18 months represent the first laying cycle. Molting and additional laying cycles will increase the cumulative potential placements.

**Broiler-Type Eggs in Incubators: By Region
and United States, July 1, 2009-10**

Region	2009	2010	2010 as % of 2009
	<i>1,000</i>	<i>1,000</i>	<i>Percent</i>
North Atlantic	12,379	12,741	103
E North Central	12,477	12,690	102
W North Central	29,035	29,384	101
South Atlantic	231,738	239,351	103
South Central	323,274	333,691	103
West	23,575	24,423	104
US	632,478	652,280	103

**Broiler-Type Chicks Hatched: By State
and United States, June 2009-10**

State	During June			Jan-Jun		
	2009	2010	2010 as % of 2009	2009	2010	2010 as % of 2009
	<i>1,000</i>	<i>1,000</i>	<i>Percent</i>	<i>1,000</i>	<i>1,000</i>	<i>Percent</i>
AL	108,989	111,322	102	645,616	648,955	101
AR	87,081	88,806	102	525,812	522,695	99
DE	13,234	13,826	104	76,191	76,446	100
FL	3,634	4,863	134	21,672	28,569	132
GA	114,913	116,254	101	693,517	680,700	98
KY	29,095	28,223	97	165,848	169,645	102
LA	11,230	12,596	112	64,458	74,653	116
MD	32,100	28,962	90	191,523	185,813	97
MS	68,279	71,093	104	392,787	419,829	107
NC	66,179	71,843	109	406,671	410,374	101
OK	24,947	24,215	97	147,458	145,537	99
PA	12,981	13,532	104	82,475	79,306	96
SC	19,988	20,466	102	118,782	120,586	102
TX	59,425	58,030	98	348,943	338,222	97
VA	22,934	23,293	102	131,759	137,354	104
CA, MO, TN, & WV	72,759	73,416	101	425,707	419,544	99
19 Sts ¹	747,768	760,740	102	4,439,219	4,458,228	100
Oth Sts ²	25,822	25,967	101	153,150	155,882	102
US	773,590	786,707	102	4,592,369	4,614,110	100

¹ States in the weekly hatchery production estimating program.

² Not published separately to avoid disclosing data for individual operations.

Broiler-Type Chicks Hatched: By Month, United States, 2009-10

Month	By Months			Cumulative		
	2009	2010	2010 as % of 2009	2009	2010	2010 as % of 2009
	<i>1,000</i>	<i>1,000</i>	<i>Percent</i>	<i>1,000</i>	<i>1,000</i>	<i>Percent</i>
Jan	780,219	775,615	99	780,219	775,615	99
Feb	704,234	699,776	99	1,484,453	1,475,391	99
Mar	785,851	786,954	100	2,270,304	2,262,345	100
Apr	758,663	767,225	101	3,028,967	3,029,570	100
May	789,812	797,833	101	3,818,779	3,827,403	100
Jun	773,590	786,707	102	4,592,369	4,614,110	100
Jul	784,118			5,376,487		
Aug	781,423			6,157,910		
Sep	742,769			6,900,679		
Oct	730,698			7,631,377		
Nov	705,439			8,336,816		
Dec	779,533			9,116,349		

**Intended Placements: Broiler-Type Pullet Chicks for Hatchery
Supply Flocks by Month and Total, 2009-10**

Month	Pullet Chicks Hatched		2010 as % of 2009	Cumulative Potential Plcmts Relative to Current Supply Flocks 7-15 Months Earlier ¹	
	2009	2010		2010	2011
	<i>1,000</i>	<i>1,000</i>	<i>Percent</i>	<i>1,000</i>	<i>1,000</i>
US Place- ments					
Jan	7,142	7,219	101	62,833	63,658
Feb	7,215	6,994	97	62,005	
Mar	6,773	6,610	98	62,142	
Apr	6,240	6,538	105	62,672	
May ²	7,658	8,351	109	61,918	
Jun	7,157	7,585	106	62,049	
Jul	6,214			61,903	
Aug	7,163			62,882	
Sep	7,110			62,218	
Oct	6,388			61,671	
Nov	7,346			61,995	
Dec	6,627			63,183	
Annual Total	83,033				
Total Place- ments ³					
Jan	8,410	8,626	103		
Feb	8,524	8,972	105		
Mar	8,626	8,910	103		
Apr	7,746	8,031	104		
May ⁴	9,143	10,338	113		
Jun	8,830	9,666	109		
Jul	7,469				
Aug	8,975				
Sep	8,947				
Oct	7,883				
Nov	8,916				
Dec	8,400				
Annual Total	101,869				

¹ For Jun 2010, includes breeder pullet chicks hatched Mar 2009 through Nov 2009.

² Revised 2010 pullet chicks hatched and cumulative placements for December 2010.

³ U.S. production of intended placements worldwide.

⁴ Revised 2010.

Reliability of Chickens and Eggs Estimates

Survey Procedures: Primary data for the "**Chickens and Eggs**" report are from weekly and/or monthly questionnaires sent to producers. An attempt is made to collect information for layer and egg estimates from each known contractor and independent producer who has at least 30,000 table egg layers, flocks of hatchery supply layers, or pullet only operations with at least 500 pullets. Coverage for operations with less than 30,000 table egg layers are estimated each month based on data reported in December. Approximately 650 contractors, independent egg producers, and pullet only operations are contacted each month. All known hatcheries, approximately 300, are contacted for information on a weekly and/or monthly basis.

Estimating Procedures: Sound statistical methodology is employed to derive estimates from the reported data. All data are analyzed for unusual values. Data from each operation are compared to their own past operating profile and to trends from similar operations. Data for missing operations are estimated based on similar operations or historical data. NASS field offices prepare these estimates by using a combination of survey indications and historic trends. Individual State estimates are reviewed by the Agricultural Statistics Board for reasonableness. Individual hatchery data are summed to State, regional, and U.S. totals.

For chicken hatcheries, chicks hatched consist of all chicks of domesticated breeds including males and chicks destined for hatchery supply flocks and research purposes. Eggs set are eggs in incubators for the purpose of hatching. The relationship of egg-type chicks hatched to chicken inventory and poultry marketings are carefully monitored. The disposition of egg-type chicks hatched prior to placement into the laying flock can vary significantly, which can make comparisons to changes in layer inventory inconsistent over time. Broiler chicks placed are specifically placed on feed for meat production. Intended placement data reported by leading breeders include pullet chicks expected from eggs sold the preceding month. The breeders in this report account for a large percentage of replacement pullets for hatchery supply flocks. Production of replacement pullets by these breeders indicates the number of pullets available to hatchery supply layer flocks several months before the pullets will actually move into the laying flocks. "Hatchery Supply Flocks" include all generations of layers which could lay eggs to supply a hatchery. This includes the generations of parents, grandparents, great-grandparents, pedigree, etc. Also included are research flocks, vaccine flocks, and specific pathogen-free flocks. The broiler cumulative potential placements are a moving total of the intended placements 7-15 months earlier. The egg-type cumulative potential placements of 7-18 months earlier represent the first laying cycle. Molting and additional laying cycles will increase the cumulative potential placements of egg-type hatching flocks.

Revision Policy: The previous month's estimates are subject to revision if late reports or corrected data indicates a different level. Additionally, revisions after the monthly report will be made at the end of the marketing year and published in the annual reports of "**Chickens and Eggs Summary**" and "**Hatchery Production**". Estimates will also be reviewed for Chickens and Eggs after data from the 5-year Census of Agriculture are available. No revisions will be made after that date.

Reliability: Estimates are based on a census of all known contractors and independent producers who have at least 30,000 table egg layers, flocks of hatchery supply layers, pullet only operations with at least 500 pullets, or operating hatcheries and therefore, have no sampling error. However, estimates are subject to errors such as omission, duplication, and mistakes in reporting, recording, and processing the data. While these errors cannot be measured directly, they are minimized through strict quality controls in the data collection process and a careful review of all reported data for consistency and reasonableness.

To assist in evaluating the reliability of the estimates in this report, the "Root Mean Square Error" is shown for selected items in the following table. The "Root Mean Square Error" is a statistical measure based on past performance and is computed using the differences between first and final estimates. The "Root Mean Square Error" for all layers over the past 24 months is 0.1 percent. This means that chances are 2 out of 3 that the final estimate will not be above or below the current estimate of 338 million layers by more than 0.1 percent. Chances are 9 out of 10 that the difference will not exceed 0.2 percent.

Reliability of Layer and Egg Estimates

Item	Root Mean Square Error	90 Percent Confidence Level		Difference Between First and Latest Estimates			Number of Months	
				Average	Smallest	Largest	First Above Latest	First Below Latest
				<i>1,000</i>	<i>1,000</i>	<i>1,000</i>	<i>Number</i>	<i>Number</i>
All Layers	0.1	0.2	7	345	0	841	9	14
Eggs	0.1	0.2	0	8	0	21	9	14

Regional Listing

North Atlantic: CT, ME, MA, NH, NJ, NY, PA, RI, VT.

East North Central: IL, IN, MI, OH, WI.

West North Central: IA, KS, MN, MO, NE, ND, SD.

South Atlantic: DE, FL, GA, MD, NC, SC, VA, WV.

South Central: AL, AR, KY, LA, MS, OK, TN, TX.

West: AK, AZ, CA, CO, HI, ID, MT, NM, NV, OR, UT, WA, WY.

Terms and Definitions of Chickens and Eggs Estimates

All Layers includes both table egg and hatching egg flocks regardless of size.

Intended Placements are reported by leading breeders. Coverage may not be 100 percent. Includes expected pullet chicks from eggs sold during the preceding month at the rate of 125 pullet chicks per case of 30 dozen eggs.

Information Contacts

Listed below are the commodity specialists in the Livestock Branch of the National Agricultural Statistics Service to contact for additional information.

- Dan Kerestes, Chief, Livestock Branch(202) 720-3570
- Bruce Boess, Head, Poultry and Specialty Commodities Section.....(202) 720-4447
- Doug Bounds – Poultry Slaughter, Turkey Hatchery, Turkeys Raised.....(202) 690-3237
- David Colwell – Cold Storage.....(202) 720-8784
- Chris Hawthorn – Catfish Processing, Catfish Production, Trout Production,
 Census of Aquaculture, Egg Products, Mink(202) 720-0585
- Kim Linonis – Layers, Eggs.....(202) 690-8632
- Troy Marshall – Broiler Hatchery, Chicken Hatchery, Honey.....(202) 720-3244

ACCESS TO REPORTS!!

For your convenience, there are several ways to obtain NASS reports, data products, and services:

INTERNET ACCESS

All NASS reports are available free of charge. For free access, connect to the Internet and go to the NASS Home Page at: www.nass.usda.gov.

E-MAIL SUBSCRIPTION

All NASS reports are available by subscription free of charge direct to your e-mail address. Starting with the NASS Home Page at www.nass.usda.gov, under the right navigation, *Receive reports by Email*, click on **National** or **State**. Follow the instructions on the screen.

PRINTED REPORTS OR DATA PRODUCTS

CALL OUR TOLL-FREE ORDER DESK: 800-999-6779 (U.S. and Canada)
Other areas, please call 703-605-6220 FAX: 703-605-6880
(Visa, MasterCard, check, or money order acceptable for payment.)

ASSISTANCE

For **assistance** with general agricultural statistics or further information about NASS or its products or services, contact the **Agricultural Statistics Hotline** at **800-727-9540**, 7:30 a.m. to 4:00 p.m. ET, or e-mail: nass@nass.usda.gov.

The U.S. Department of Agriculture (USDA) prohibits discrimination in all its programs and activities on the basis of race, color, national origin, age, disability, and where applicable, sex, marital status, familial status, parental status, religion, sexual orientation, genetic information, political beliefs, reprisal, or because all or a part of an individual's income is derived from any public assistance program. (Not all prohibited bases apply to all programs.) Persons with disabilities who require alternative means for communication of program information (Braille, large print, audiotape, etc.) should contact USDA's TARGET Center at (202) 720-2600 (voice and TDD).

To file a complaint of discrimination, write to USDA, Director, Office of Civil Rights, 1400 Independence Avenue, S.W., Washington, D.C. 20250-9410, or call (800) 795-3272 (voice) or (202) 720-6382 (TDD). USDA is an equal opportunity provider and employer.