



Chickens and Eggs

ISSN: 1948-9064

Released August 23, 2010, by the National Agricultural Statistics Service (NASS), Agricultural Statistics Board, United States Department of Agriculture (USDA).

Special Note

NASS is in the process of modifying report layouts in order to improve readability. This is the first issue produced using the new layout. This report issue is published using both layouts but future issues will only be produced using this layout. The previous layout is available on the NASS website: <http://www.nass.usda.gov>.

July Egg Production Up 1 Percent

United States egg production totaled 7.69 billion during July 2010, up 1 percent from last year. Production included 6.58 billion table eggs, and 1.11 billion hatching eggs, of which 1.04 billion were broiler-type and 72 million were egg-type. The total number of layers during July 2010 averaged 339 million, up 2 percent from last year. July egg production per 100 layers was 2,270 eggs, down slightly from July 2009.

All layers in the United States on August 1, 2010 totaled 338 million, up 2 percent from last year. The 338 million layers consisted of 280 million layers producing table or market type eggs, 55.0 million layers producing broiler-type hatching eggs, and 2.95 million layers producing egg-type hatching eggs. Rate of lay per day on August 1, 2010, averaged 73.2 eggs per 100 layers, down slightly from August 1, 2009.

Egg-Type Chicks Hatched Up 5 Percent

Egg-type chicks hatched during July 2010 totaled 38.1 million, up 5 percent from July 2009. Eggs in incubators totaled 33.4 million on August 1, 2010, up 6 percent from a year ago.

Domestic placements of egg-type pullet chicks for future hatchery supply flocks by leading breeders totaled 218 thousand during July 2010, down 36 percent from July 2009.

Broiler-Type Chicks Hatched Up 2 Percent

Broiler-type chicks hatched during July 2010 totaled 801 million, up 2 percent from July 2009. Eggs in incubators totaled 649 million on August 1, 2010, up 3 percent from a year earlier.

Leading breeders placed 6.52 million broiler-type pullet chicks for future domestic hatchery supply flocks during July 2010, up 5 percent from July 2009.

This page intentionally left blank.

Contents

Average Number of All Layers on Hand During the Month – United States: 2009-2010.....	4
Egg Production During the Month by Type – United States: 2009-2010.....	4
Average Number of Layers During the Month – United States.....	5
All Egg Production During the Month – United States	5
Layers on Hand and Eggs Produced by Type and Forced Molt – United States: June-July 2009 and 2010.....	6
Layers on Hand and Eggs Produced by Type and Forced Molt – United States: July-August 2009 and 2010.....	7
Layers on Hand and Eggs Produced – States and United States: During June 2009 and 2010	8
Layers on Hand and Eggs Produced – States and United States: During July 2009 and 2010.....	9
Egg Production by Type – States and United States: June 2009 and 2010.....	10
Egg Production by Type – States and United States: July 2009 and 2010	11
Forced Molt as Percent of All Layers by Month – United States: 2009-2010.....	12
Forced Molt as Percent of All Layers – States and United States: August 1, 2009 and 2010	12
Hatchery Production – United States: 2009 and 2010	13
Egg-Type Eggs in Incubators – Regions and United States: August 1, 2009 and 2010	14
Egg-Type Chicks Hatched by Month – United States: 2009-2010.....	14
Intended Placements of Egg-Type Pullet Chicks for Hatchery Supply Flocks by Month – United States: 2009-2010	15
Broiler-Type Eggs in Incubators – Regions and United States: August 1, 2009 and 2010	15
Broiler-Type Chicks Hatched – States and United States: July 2009 and 2010	16
Broiler-Type Chicks Hatched by Month – United States: 2009-2010.....	16
Intended Placements of Broiler-Type Pullet Chicks for Hatchery Supply Flocks by Month and Total: 2009-2010	17
Statistical Methodology	18
Regional Listing.....	19
Terms and Definitions of Chickens and Eggs Estimates	19
Information Contacts	19

Average Number of All Layers on Hand During the Month – United States: 2009-2010

[Blank data cells indicate estimation period has not yet begun]

Month	2009		2010	
	(1,000 layers)		(1,000 layers)	
December ¹		340,638		339,744
January		341,400		339,009
February		341,068		339,086
March		340,914		340,869
April		340,170		339,946
May		337,116		337,930
June		334,032		338,461
July		332,740		338,650
August		332,612		
September		333,885		
October		335,819		
November		338,121		

¹ December preceding year.

Egg Production During the Month by Type – United States: 2009-2010

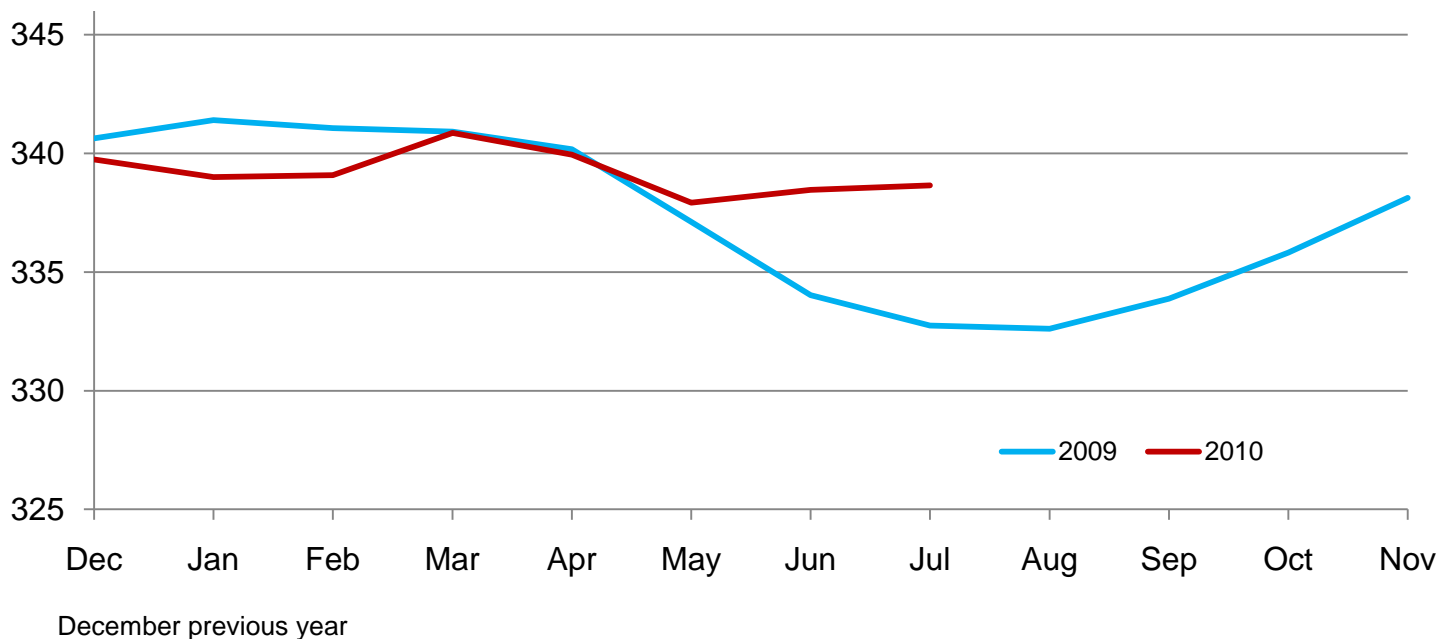
[Blank data cells indicate estimation period has not yet begun. Totals may not add due to rounding]

Month	Total eggs		Table eggs		Hatching eggs	
	2009	2010	2009	2010	2009	2010
	(million eggs)	(million eggs)	(million eggs)	(million eggs)	(million eggs)	(million eggs)
December ¹	7,778	7,827	6,711	6,758	1,068	1,068
January	7,678	7,688	6,603	6,606	1,075	1,082
February	6,903	6,909	5,917	5,923	985	986
March	7,737	7,813	6,645	6,710	1,093	1,102
April	7,472	7,548	6,419	6,473	1,053	1,075
May	7,607	7,685	6,515	6,575	1,092	1,110
June	7,360	7,455	6,301	6,386	1,059	1,069
July	7,590	7,688	6,505	6,579	1,085	1,109
August	7,593		6,518		1,075	
September	7,376		6,349		1,027	
October	7,696		6,638		1,059	
November	7,569		6,541		1,027	
During year	90,359		77,664		12,698	

¹ December preceding year.

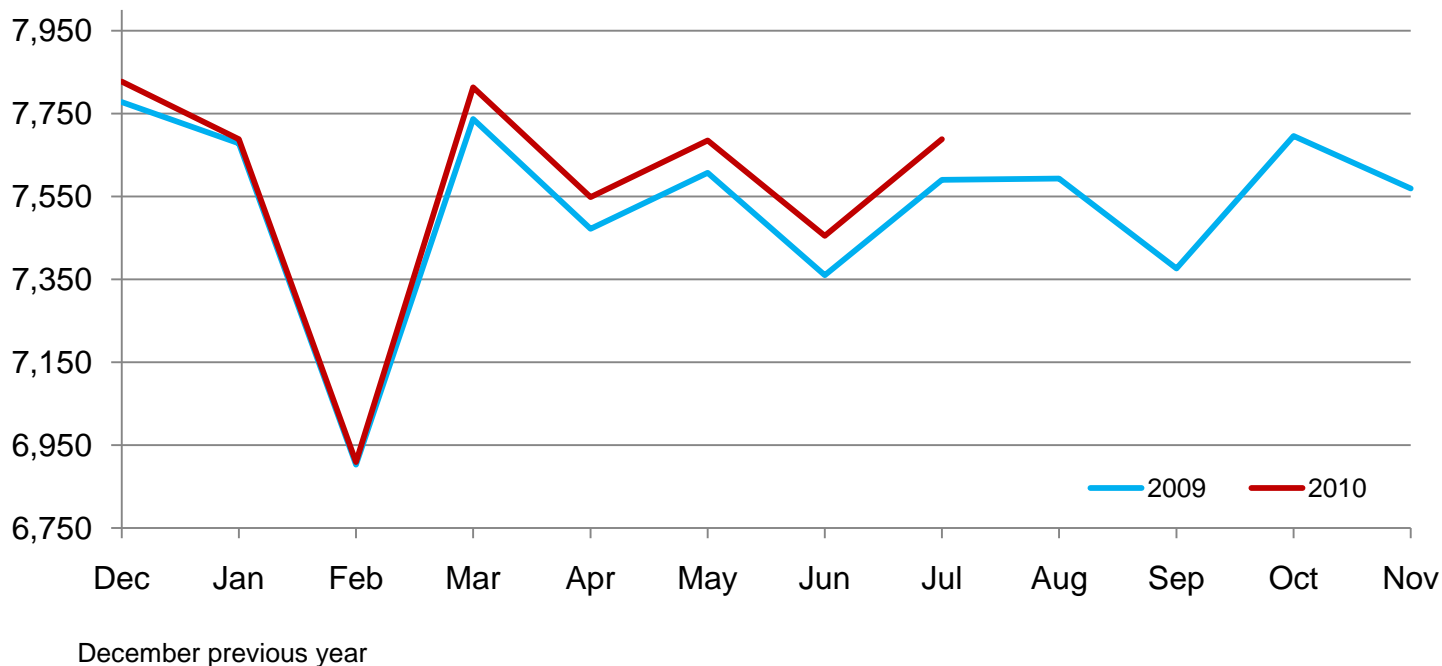
Average Layers During the Month – United States

Million layers



All Egg Production During the Month – United States

Million eggs



Layers on Hand and Eggs Produced by Type and Forced Molt – United States: June-July 2009 and 2010

[Totals may not add due to rounding]

Item	2009	2010	2010 as percent of 2009
Layers during June			
All layers 1,000	334,032	338,461	101
Table egg type 1,000	276,976	280,135	101
Hatching egg type 1,000	57,056	58,326	102
Broiler-type hatching 1,000	54,152	55,398	102
Egg-type hatching 1,000	2,904	2,928	101
Eggs per 100 layers during June			
All layers number	2,203	2,203	100
Table egg type number	2,275	2,280	100
Hatching egg type number	1,856	1,833	99
Broiler-type hatching number	1,826	1,805	99
Egg-type hatching number	2,410	2,357	98
Eggs produced during June			
All layers million	7,360	7,455	101
Table egg type million	6,301	6,386	101
Hatching egg type million	1,059	1,069	101
Broiler-type hatching million	989	1,000	101
Egg-type hatching million	70	69	99
Layers on July 1			
All layers 1,000	333,064	339,256	102
Table egg type 1,000	276,103	280,791	102
Hatching egg type 1,000	56,961	58,465	103
Broiler-type hatching 1,000	54,073	55,558	103
Egg-type hatching 1,000	2,888	2,907	101
Eggs per 100 layers on July 1			
All layers number	73.6	73.2	99
Table egg type number	76.2	75.8	99
Hatching egg type number	61.4	61.1	100
Broiler-type hatching number	60.5	60.2	100
Egg-type hatching number	79.3	78.7	99
Forced molt layers on July 1			
Being molted percent	3.4	3.3	97
Molt completed percent	20.8	22.4	108
Layers sold for slaughter during June 1,000	14,112	13,933	99
Layers rendered, died, destroyed, composted or disappeared for any reason during June 1,000	7,843	7,885	101
Pullets on July 1 1,000	101,790	102,613	101
Pullets added during June ¹ 1,000	21,075	23,074	109

¹ Pullet chicks less than 3 days old added to pullet flocks.

Layers on Hand and Eggs Produced by Type and Forced Molt – United States: July-August 2009 and 2010

[Totals may not add due to rounding]

Item	2009	2010	2010 as percent of 2009
Layers during July			
All layers 1,000	332,740	338,650	102
Table egg type 1,000	276,291	280,434	101
Hatching egg type 1,000	56,449	58,216	103
Broiler-type hatching 1,000	53,558	55,288	103
Egg-type hatching 1,000	2,891	2,928	101
Eggs per 100 layers during July			
All layers number	2,281	2,270	100
Table egg type number	2,354	2,346	100
Hatching egg type number	1,922	1,905	99
Broiler-type hatching number	1,893	1,876	99
Egg-type hatching number	2,456	2,459	100
Eggs produced during July			
All layers million	7,590	7,688	101
Table egg type million	6,505	6,579	101
Hatching egg type million	1,085	1,109	102
Broiler-type hatching million	1,014	1,037	102
Egg-type hatching million	71	72	101
Layers on August 1			
All layers 1,000	332,371	338,013	102
Table egg type 1,000	276,456	280,061	101
Hatching egg type 1,000	55,915	57,952	104
Broiler-type hatching 1,000	53,031	55,007	104
Egg-type hatching 1,000	2,884	2,945	102
Eggs per 100 layers on August 1			
All layers number	73.4	73.2	100
Table egg type number	75.6	75.6	100
Hatching egg type number	62.2	61.6	99
Broiler-type hatching number	61.3	60.7	99
Egg-type hatching number	79.5	78.8	99
Forced molt layers on August 1			
Being molted percent	2.7	3.3	122
Molt completed percent	21.4	22.2	104
Layers sold for slaughter during July 1,000	14,354	13,612	95
Layers rendered, died, destroyed, composted or disappeared for any reason during July 1,000	8,367	8,166	98
Pullets on August 1 1,000	100,871	103,012	102
Pullets added during July ¹ 1,000	22,546	21,674	96

¹ Pullet chicks less than 3 days old added to pullet flocks.

Layers on Hand and Eggs Produced – States and United States: During June 2009 and 2010

State	Table egg layers in flocks 30,000 and above		All layers		Eggs per 100 for all layers	
	2009	2010	2009	2010	2009	2010
	(1,000)	(1,000)	(1,000)	(1,000)	(number)	(number)
Alabama	1,255	1,379	9,149	9,843	1,858	1,859
Arkansas	3,292	3,229	12,176	12,060	1,955	1,940
California	19,114	19,180	19,424	19,487	2,234	2,268
Colorado	3,113	3,109	3,601	3,575	2,472	2,378
Connecticut	2,749	2,372	2,812	2,443	2,276	2,333
Florida	9,153	8,769	9,512	9,108	2,208	2,174
Georgia	8,782	8,196	17,495	16,974	2,035	2,091
Hawaii	300	242	325	287	1,754	1,777
Illinois	4,344	4,327	4,549	4,540	2,264	2,181
Indiana	22,305	22,903	23,006	23,616	2,308	2,295
Iowa	52,679	53,674	53,542	54,531	2,215	2,232
Maine	3,319	3,513	3,411	3,568	2,082	2,382
Maryland	1,967	2,152	2,114	2,290	2,129	2,358
Michigan	9,792	9,965	9,952	10,121	2,291	2,213
Minnesota	9,567	9,880	10,085	10,364	2,201	2,277
Mississippi	1,392	1,476	6,186	6,372	2,021	1,962
Missouri	6,109	5,870	7,419	7,220	2,251	2,244
Nebraska	9,424	9,370	9,474	9,420	2,396	2,431
New York	3,821	3,854	4,038	4,067	2,402	2,385
North Carolina	5,394	6,095	12,609	13,612	2,086	1,962
Ohio	26,012	27,111	26,481	27,613	2,258	2,166
Oregon	2,181	2,293	2,333	2,444	2,486	2,291
Pennsylvania	21,334	22,697	22,403	23,803	2,375	2,432
South Carolina	3,060	2,819	4,422	4,087	2,035	2,080
South Dakota	2,362	2,330	2,402	2,370	2,290	2,321
Texas	13,696	13,451	18,222	17,914	2,184	2,144
Utah ¹	(NA)	3,277	(NA)	3,307	(NA)	2,389
Virginia	1,170	1,238	2,997	3,564	1,969	1,936
Washington	5,868	6,262	5,983	6,377	2,357	2,258
Wisconsin	4,221	10,741	4,792	19,018	2,254	2,124
Other States ²	14,752	10,741	23,118	19,018	2,115	2,124
United States	272,527	275,643	334,032	338,461	2,203	2,203

(NA) Not available.

¹ Included in Other States in 2009.

² Includes data for states not listed in this table.

Layers on Hand and Eggs Produced – States and United States: During July 2009 and 2010

State	Table egg layers in flocks 30,000 and above		All layers		Eggs per 100 for all layers	
	2009	2010	2009	2010	2009	2010
	(1,000)	(1,000)	(1,000)	(1,000)	(number)	(number)
Alabama	1,208	1,322	9,001	9,715	1,922	1,935
Arkansas	3,311	3,238	12,034	12,238	2,028	2,018
California	19,077	19,106	19,385	19,414	2,321	2,333
Colorado	3,141	3,119	3,628	3,589	2,453	2,508
Connecticut	2,706	2,375	2,769	2,446	2,420	2,412
Florida	9,251	8,972	9,611	9,322	2,247	2,263
Georgia	8,682	7,932	17,380	16,639	2,129	2,140
Hawaii	301	248	327	293	1,835	1,775
Illinois	4,305	4,385	4,514	4,593	2,370	2,308
Indiana	22,237	22,880	22,962	23,560	2,317	2,334
Iowa	52,648	53,939	53,496	54,810	2,292	2,262
Maine	3,328	3,480	3,416	3,535	2,196	2,489
Maryland	1,877	2,131	2,021	2,271	2,276	2,334
Michigan	9,506	9,947	9,656	10,099	2,465	2,426
Minnesota	9,640	9,828	10,141	10,314	2,258	2,346
Mississippi	1,347	1,536	5,883	6,351	2,108	2,015
Missouri	6,049	5,699	7,347	7,087	2,355	2,342
Nebraska	9,558	9,292	9,608	9,342	2,456	2,526
New York	3,855	3,760	4,078	3,977	2,501	2,489
North Carolina	5,362	5,984	12,516	13,505	2,117	2,081
Ohio	25,818	27,405	26,276	27,890	2,329	2,262
Oregon	2,233	2,415	2,384	2,567	2,559	2,415
Pennsylvania	21,528	22,896	22,596	24,023	2,461	2,485
South Carolina	3,014	2,918	4,333	4,180	2,146	2,105
South Dakota	2,363	2,325	2,403	2,365	2,455	2,410
Texas	13,628	13,310	18,149	17,735	2,292	2,188
Utah ¹	(NA)	3,223	(NA)	3,253	(NA)	2,367
Virginia	1,315	1,287	3,171	3,639	2,018	1,896
Washington	5,752	6,266	5,867	6,381	2,369	2,366
Wisconsin	4,237	3,910	4,808	4,497	2,371	2,402
Other States ²	14,564	10,814	22,980	19,020	2,211	2,192
United States	271,841	275,942	332,740	338,650	2,281	2,270

(NA) Not available.

¹ Included in Other States in 2009.

² Includes data for States not listed in this table.

Egg Production by Type – States and United States: June 2009 and 2010

[Totals may not add due to rounding. Data by type of flock not shown for some States to avoid disclosing individual operations, data included in United States totals]

State	Total production		Table eggs		Hatching eggs	
	2009	2010	2009	2010	2009	2010
	(million eggs)	(million eggs)	(million eggs)	(million eggs)	(million eggs)	(million eggs)
Alabama	170	183	28	32	142	151
Arkansas	238	234	77	73	161	161
California	434	442	(D)	(D)	(D)	(D)
Colorado	89	85	(D)	(D)	(D)	(D)
Connecticut	64	57	(D)	(D)	(D)	(D)
Florida	210	198	205	194	5	4
Georgia	356	355	193	186	163	169
Hawaii	5.7	5.1	5.7	5.1	-	-
Illinois	103	99	100	96	3	3
Indiana	531	542	518	530	13	12
Iowa	1,186	1,217	1,173	1,204	13	13
Maine	71	85	(D)	(D)	(D)	(D)
Maryland	45	54	43	52	2	2
Michigan	228	224	(D)	(D)	(D)	(D)
Minnesota	222	236	213	228	9	8
Mississippi	125	125	35	36	90	89
Missouri	167	162	(D)	(D)	(D)	(D)
Nebraska	227	229	227	229	-	-
New York	97	97	(D)	(D)	(D)	(D)
North Carolina	263	267	135	140	128	127
Ohio	598	598	(D)	(D)	(D)	(D)
Oregon	58	56	56	54	2	2
Pennsylvania	532	579	513	560	19	19
South Carolina	90	85	68	63	22	22
South Dakota	55	55	55	55	-	-
Texas	398	384	(D)	(D)	(D)	(D)
Utah ¹	(NA)	79	(NA)	79	(NA)	-
Virginia	59	69	27	27	32	42
Washington	141	144	(D)	(D)	(D)	(D)
Wisconsin	108	106	(D)	(D)	(D)	(D)
Other States ²	489	404	355	279	134	125
United States	7,360	7,455	6,301	6,386	1,059	1,069

- Represents zero.

(D) Withheld to avoid disclosing data for individual operations.

(NA) Not available.

¹ Included in Other States in 2009.

² Includes data for States not listed in this table.

Egg Production by Type – States and United States: July 2009 and 2010

[Totals may not add due to rounding. Data by type of flock not shown for some States to avoid disclosing individual operations, data included in United States totals]

State	Total production		Table eggs		Hatching eggs	
	2009	2010	2009	2010	2009	2010
	(million eggs)	(million eggs)	(million eggs)	(million eggs)	(million eggs)	(million eggs)
Alabama	173	188	29	32	144	156
Arkansas	244	247	80	77	164	170
California	450	453	(D)	(D)	(D)	(D)
Colorado	89	90	(D)	(D)	(D)	(D)
Connecticut	67	59	(D)	(D)	(D)	(D)
Florida	216	211	211	206	5	5
Georgia	370	356	200	182	170	174
Hawaii	6.0	5.2	6.0	5.2	-	-
Illinois	107	106	104	103	3	3
Indiana	532	550	519	538	13	12
Iowa	1,226	1,240	1,213	1,227	13	13
Maine	75	88	(D)	(D)	(D)	(D)
Maryland	46	53	44	51	2	2
Michigan	238	245	(D)	(D)	(D)	(D)
Minnesota	229	242	220	233	9	9
Mississippi	124	128	35	38	89	90
Missouri	173	166	(D)	(D)	(D)	(D)
Nebraska	236	236	236	236	-	-
New York	102	99	(D)	(D)	(D)	(D)
North Carolina	265	281	134	146	131	135
Ohio	612	631	(D)	(D)	(D)	(D)
Oregon	61	62	59	60	2	2
Pennsylvania	556	597	537	577	19	20
South Carolina	93	88	70	66	23	22
South Dakota	59	57	59	57	-	-
Texas	416	388	(D)	(D)	(D)	(D)
Utah ¹	(NA)	77	(NA)	77	(NA)	-
Virginia	64	69	29	25	35	44
Washington	139	151	(D)	(D)	(D)	(D)
Wisconsin	114	108	(D)	(D)	(D)	(D)
Other States ²	508	417	370	287	138	130
United States	7,590	7,688	6,505	6,579	1,085	1,109

- Represents zero.

(D) Withheld to avoid disclosing data for individual operations.

(NA) Not available.

¹ Included in Other States in 2009.

² Includes data for States not listed in this table.

Forced Molt as Percent of All Layers by Month – United States: 2009-2010

[As of the first of the month. Blank data cells indicate estimation period has not yet begun]

Month	Being molted		Molt completed	
	2009	2010	2009	2010
	(percent)	(percent)	(percent)	(percent)
January	3.3	2.7	21.3	20.6
February	3.4	3.6	21.6	20.1
March	3.4	3.2	21.5	21.0
April	2.1	2.6	21.8	21.1
May	4.5	4.2	20.7	21.2
June	3.4	3.3	21.4	22.6
July	3.4	3.3	20.8	22.4
August	2.7	3.3	21.4	22.2
September	2.9		21.2	
October	3.5		21.1	
November	2.3		21.9	
December	1.8		22.2	

Forced Molt as Percent of All Layers – States and United States: August 1, 2009 and 2010

[As of the first of the month]

State	Being molted		Molt completed	
	2009	2010	2009	2010
	(percent)	(percent)	(percent)	(percent)
Alabama	1.5	0.5	6.0	6.0
Arkansas	-	1.5	11.0	12.5
California	4.0	5.0	30.5	29.0
Colorado	1.5	-	14.5	17.0
Connecticut	-	-	13.0	12.0
Florida	4.5	6.5	29.0	38.0
Georgia	3.5	7.0	14.5	13.0
Hawaii	10.0	9.5	50.0	43.5
Illinois	7.0	7.0	30.5	21.5
Indiana	5.0	3.5	32.0	31.0
Iowa	2.5	3.0	32.5	39.5
Maine	-	-	-	-
Maryland	-	3.5	22.5	12.5
Michigan	2.0	1.5	22.5	24.0
Minnesota	2.5	5.0	24.5	21.5
Mississippi	3.0	2.0	9.5	9.0
Missouri	3.5	1.0	14.0	19.5
Nebraska	-	1.0	2.0	1.0
New York	2.5	0.5	7.5	11.5
North Carolina	2.0	-	7.5	12.0
Ohio	2.0	4.0	21.5	19.5
Oregon	4.0	2.5	36.0	28.5
Pennsylvania	1.5	2.0	14.0	11.5
South Carolina	3.5	5.0	20.5	16.0
South Dakota	6.5	7.0	20.0	30.0
Texas	1.5	3.0	20.0	17.5
Utah ¹	(NA)	9.0	(NA)	36.0
Virginia	3.5	7.5	10.0	13.0
Washington	7.0	9.5	32.0	34.0
Wisconsin	4.0	5.0	28.0	22.5
Other States ²	2.7	2.6	19.7	17.9
United States	2.7	3.3	21.4	22.2

- Represents zero.

(NA) Not available.

¹ Included in Other States in 2009.

² Includes data for States not listed in this table.

Hatchery Production – United States: 2009 and 2010

Item	2009	2010	2010 as percent of 2009
	(1,000)	(1,000)	(percent)
Egg-type			
Eggs in incubators on August 1	31,629	33,392	106
Chicks hatched during July	36,213	38,053	105
Chicks hatched January through July	278,077	295,319	106
Pullets hatched during July for intended placements:			
Hatchery supply flocks	342	218	64
Cumulative potential placements 7-18 months earlier ¹	2,958	3,405	115
Broiler-type			
Eggs in incubators on August 1	630,166	648,652	103
Chicks hatched during July	784,118	800,860	102
Chicks hatched January through July	5,376,487	5,414,970	101
Pullets hatched during July for intended placements:			
Hatchery supply flocks	6,214	6,520	105
Cumulative potential placements 7-15 months earlier ²	64,183	61,903	96

¹ 2010 includes pullet chicks hatched January 2009 through December 2009.

² 2010 includes pullet chicks hatched April 2009 through December 2009.

Egg-Type Eggs in Incubators – Regions and United States: August 1, 2009 and 2010

[See regional listing on page 19]

Region	2009	2010	2010 as percent of 2009
	(1,000)	(1,000)	(percent)
North Atlantic	4,061	3,543	87
East North Central	6,761	7,295	108
West North Central	7,377	8,040	109
South Atlantic	2,783	2,978	107
South Central	4,397	4,487	102
West	6,250	7,049	113
United States	31,629	33,392	106

Egg-Type Chicks Hatched by Month – United States: 2009-2010

[Blank data cells indicate estimation period has not yet begun]

Month	By months			Cumulative		
	2009	2010	2010 as percent of 2009	2009	2010	2010 as percent of 2009
	(1,000)	(1,000)	(percent)	(1,000)	(1,000)	(percent)
January	37,812	38,794	103	37,812	38,794	103
February	36,795	40,120	109	74,607	78,914	106
March	41,737	45,151	108	116,344	124,065	107
April	42,794	47,503	111	159,138	171,568	108
May	40,758	43,075	106	199,896	214,643	107
June	41,968	42,623	102	241,864	257,266	106
July	36,213	38,053	105	278,077	295,319	106
August	37,945			316,022		
September	40,515			356,537		
October	37,566			394,103		
November	34,512			428,615		
December	39,554			468,169		

Intended Placements of Egg-Type Pullet Chicks for Hatchery Supply Flocks by Month – United States: 2009-2010

[Blank data cells indicate estimation period has not yet begun]

Month	Pullet chicks hatched		2010 as percent of 2009	Cumulative potential placements relative to current supply flocks 7-18 months earlier ¹	
	2009	2010		2010	2010
	(1,000)	(1,000)	(percent)	(1,000)	(1,000)
January	240	227	95	3,198	3,292
February	256	296	116	3,296	3,168
March	277	260	94	3,308	
April	307	232	76	3,318	
May	275	230	84	3,322	
June	321	318	99	3,295	
July	342	218	64	3,405	
August	291			3,392	
September	220			3,432	
October	277			3,415	
November	290			3,340	
December	309			3,295	
Total	3,405				

¹ For July 2010, includes breeder pullet chicks hatched January 2009 through December 2009. The 7-18 months represent the first laying cycle. Molting and additional laying cycles will increase the cumulative potential placements.

Broiler-Type Eggs in Incubators – Regions and United States: August 1, 2009 and 2010

[See regional listing on page 19]

Region	2009	2010	2010 as percent of 2009
	(1,000)	(1,000)	(percent)
North Atlantic	13,619	12,701	93
East North Central	12,080	12,388	103
West North Central	29,252	30,089	103
South Atlantic	230,825	240,238	104
South Central	322,733	331,073	103
West	21,657	22,163	102
United States	630,166	648,652	103

Broiler-Type Chicks Hatched – States and United States: July 2009 and 2010

State	During July			January-July		
	2009	2010	2010 as percent of 2009	2009	2010	2010 as percent of 2009
	(1,000)	(1,000)	(percent)	(1,000)	(1,000)	(percent)
Alabama	111,335	115,251	104	756,951	764,206	101
Arkansas	86,874	89,626	103	612,686	612,321	100
Delaware	13,243	14,238	108	89,434	90,684	101
Florida	3,788	4,969	131	25,460	33,538	132
Georgia	117,373	117,828	100	810,890	798,528	98
Kentucky	28,553	28,673	100	194,401	198,318	102
Louisiana	12,455	12,950	104	76,913	87,603	114
Maryland	32,926	29,697	90	224,449	215,510	96
Mississippi	68,649	71,866	105	461,436	491,695	107
North Carolina	68,188	72,985	107	474,859	483,359	102
Oklahoma	25,097	23,905	95	172,555	169,442	98
Pennsylvania	13,709	13,742	100	96,184	93,048	97
South Carolina	19,743	21,800	110	138,525	142,386	103
Texas	60,795	59,095	97	409,738	397,317	97
Virginia	23,285	24,297	104	155,044	161,651	104
California, Missouri, Tennessee, and West Virginia	71,858	73,761	103	497,565	493,305	99
19 States ¹	757,871	774,683	102	5,197,090	5,232,911	101
Other States ²	26,247	26,177	100	179,397	182,059	101
United States	784,118	800,860	102	5,376,487	5,414,970	101

¹ States in the weekly hatchery production estimating program.

² Not published separately to avoid disclosing data for individual operations.

Broiler-Type Chicks Hatched by Month – United States: 2009-2010

[Blank data cells indicate estimation period has not yet begun]

Month	By months			Cumulative		
	2009	2010	2010 as percent of 2009	2009	2010	2010 as percent of 2009
	(1,000)	(1,000)	(percent)	(1,000)	(1,000)	(percent)
January	780,219	775,615	99	780,219	775,615	99
February	704,234	699,776	99	1,484,453	1,475,391	99
March	785,851	786,954	100	2,270,304	2,262,345	100
April	758,663	767,225	101	3,028,967	3,029,570	100
May	789,812	797,833	101	3,818,779	3,827,403	100
June	773,590	786,707	102	4,592,369	4,614,110	100
July	784,118	800,860	102	5,376,487	5,414,970	101
August	781,423			6,157,910		
September	742,769			6,900,679		
October	730,698			7,631,377		
November	705,439			8,336,816		
December	779,533			9,116,349		

Intended Placements of Broiler-Type Pullet Chicks for Hatchery Supply Flocks by Month and Total: 2009-2010

[Blank data cells indicate estimation period has not yet begun]

Month	Pullet chicks hatched		2010 as percent of 2009	Cumulative potential placements relative to current supply flocks 7-15 months earlier ¹	
	2009	2010		2010	2011
	(1,000)	(1,000)	(percent)	(1,000)	(1,000)
United States placements					
January	7,142	7,219	101	62,833	63,658
February	7,215	6,994	97	62,005	63,790
March	6,773	6,610	98	62,142	
April	6,240	6,538	105	62,672	
May	7,658	8,351	109	61,918	
June	7,157	7,585	106	62,049	
July	6,214	6,520	105	61,903	
August	7,163			62,882	
September	7,110			62,218	
October	6,388			61,671	
November	7,346			61,995	
December	6,627			63,183	
Annual total	83,033				
Total placements ²					
January	8,410	8,626	103		
February	8,524	8,972	105		
March	8,626	8,910	103		
April	7,746	8,031	104		
May	9,143	10,338	113		
June	8,830	9,666	109		
July	7,469	8,071	108		
August	8,975				
September	8,947				
October	7,883				
November	8,916				
December	8,400				
Annual total	101,869				

¹ For July 2010, includes breeder pullet chicks hatched April 2009 through December 2009.

² United States production of intended placements worldwide.

Statistical Methodology

Survey Procedures: Primary data for the *Chickens and Eggs* report are from weekly and/or monthly questionnaires sent to producers. An attempt is made to collect information for layer and egg estimates from each known contractor and independent producer who has at least 30,000 table egg layers, flocks of hatchery supply layers, or pullet only operations with at least 500 pullets. Coverage for operations with less than 30,000 table egg layers are estimated each month based on data reported in December. Approximately 650 contractors, independent egg producers, and pullet only operations are contacted each month. All known hatcheries, approximately 300, are contacted for information on a weekly and/or monthly basis.

Estimating Procedures: Sound statistical methodology is employed to derive estimates from the reported data. All data are analyzed for unusual values. Data from each operation are compared to their own past operating profile and to trends from similar operations. Data for missing operations are estimated based on similar operations or historical data. NASS field offices prepare these estimates by using a combination of survey indications and historic trends. Individual State estimates are reviewed by the Agricultural Statistics Board for reasonableness. Individual hatchery data are summed to State, regional, and U.S. totals.

For chicken hatcheries, chicks hatched consist of all chicks of domesticated breeds including males and chicks destined for hatchery supply flocks and research purposes. Eggs set are eggs in incubators for the purpose of hatching. The relationship of egg-type chicks hatched to chicken inventory and poultry marketings are carefully monitored. The disposition of egg-type chicks hatched prior to placement into the laying flock can vary significantly, which can make comparisons to changes in layer inventory inconsistent over time. Broiler chicks placed are specifically placed on feed for meat production. Intended placement data reported by leading breeders include pullet chicks expected from eggs sold the preceding month. The breeders in this report account for a large percentage of replacement pullets for hatchery supply flocks. Production of replacement pullets by these breeders indicates the number of pullets available to hatchery supply layer flocks several months before the pullets will actually move into the laying flocks. "Hatchery Supply Flocks" include all generations of layers which could lay eggs to supply a hatchery. This includes the generations of parents, grandparents, great-grandparents, pedigree, etc. Also included are research flocks, vaccine flocks, and specific pathogen-free flocks. The broiler cumulative potential placements are a moving total of the intended placements 7-15 months earlier. The egg-type cumulative potential placements of 7-18 months earlier represent the first laying cycle. Molting and additional laying cycles will increase the cumulative potential placements of egg-type hatching flocks.

Revision Policy: The previous month's estimates are subject to revision if late reports or corrected data indicates a different level. Additionally, revisions after the monthly report will be made at the end of the marketing year and published in the annual reports of *Chickens and Eggs Summary* and *Hatchery Production Summary*. Estimates will also be reviewed for chickens and eggs after data from the 5-year Census of Agriculture are available. No revisions will be made after that date.

Reliability: Estimates are based on a census of all known contractors and independent producers who have at least 30,000 table egg layers, flocks of hatchery supply layers, pullet only operations with at least 500 pullets, or operating hatcheries and therefore, have no sampling error. However, estimates are subject to errors such as omission, duplication, and mistakes in reporting, recording, and processing the data. While these errors cannot be measured directly, they are minimized through strict quality controls in the data collection process and a careful review of all reported data for consistency and reasonableness.

To assist in evaluating the reliability of the estimates in this report, the "Root Mean Square Error" is shown for selected items in the following table. The "Root Mean Square Error" is a statistical measure based on past performance and is computed using the differences between first and final estimates. The "Root Mean Square Error" for all layers over the past 24 months is 0.1 percent. This means that chances are 2 out of 3 that the final estimate will not be above or below the current estimate of 339 million layers by more than 0.1 percent. Chances are 9 out of 10 that the difference will not exceed 0.2 percent.

Reliability of Layer and Egg Estimates

[Based on data for the past twenty-four months]

Item	Root mean square error	90 percent confidence level	Difference between first and latest estimate				
			Average	Smallest	Largest	Months	
						Below latest	Above latest
All layers	(percent) 0.1	(percent) 0.2	(1,000) 333	(1,000) -	(1,000) 841	(number) 15	(number) 8
Eggs	0.1	0.2	(million) 8	(million) -	(million) 21	15	8

- Represents zero.

Regional Listing

North Atlantic: Connecticut, Maine, Massachusetts, New Hampshire, New Jersey, New York, Pennsylvania, Rhode Island, Vermont.

East North Central: Illinois, Indiana, Michigan, Ohio, Wisconsin.

West North Central: Iowa, Kansas, Minnesota, Missouri, Nebraska, North Dakota, South Dakota.

South Atlantic: Delaware, Florida, Georgia, Maryland, North Carolina, South Carolina, Virginia, West Virginia.

South Central: Alabama, Arkansas, Kentucky, Louisiana, Mississippi, Oklahoma, Tennessee, Texas.

West: Alaska, Arizona, California, Colorado, Hawaii, Idaho, Montana, New Mexico, Nevada, Oregon, Utah, Washington, Wyoming.

Terms and Definitions of Chickens and Eggs Estimates

All Layers includes both table egg and hatching egg flocks regardless of size.

Intended Placements are reported by leading breeders. Coverage may not be 100 percent. Includes expected pullet chicks from eggs sold during the preceding month at the rate of 125 pullet chicks per case of 30 dozen eggs.

Information Contacts

Listed below are the commodity specialists in the Livestock Branch of the National Agricultural Statistics Service to contact for additional information. E-mail inquiries may be sent to nass@nass.usda.gov

Dan Kerestes, Chief, Livestock Branch	(202) 720-3570
Bruce Boess, Head, Poultry and Specialty Commodities Section	(202) 720-4447
Doug Bounds – Poultry Slaughter, Turkey Hatchery, Turkeys Raised	(202) 690-3237
David Colwell – Cold Storage	(202) 720-8784
Chris Hawthorn – Catfish Processing, Catfish Production, Trout Production, Census of Aquaculture, Egg Products, Mink	(202) 720-0585
Kim Linonis – Layers, Eggs	(202) 690-8632
Troy Marshall – Broiler Hatchery, Chicken Hatchery, Honey	(202) 720-3244

Access to NASS Reports

For your convenience, you may access NASS reports and products the following ways:

- All reports are available electronically, at no cost, on the NASS web site: <http://www.nass.usda.gov>
- Both national and state specific reports are available via a free e-mail subscription. To set-up this free subscription, visit <http://www.nass.usda.gov> and in the “Receive NASS Updates” box under “Receive reports by Email,” click on “National” or “State” to select the reports you would like to receive.
- Printed reports may be purchased from the National Technical Information Service (NTIS) by calling toll-free (800) 999-6779, or (703) 605-6220 if calling from outside the United States or Canada. Accepted methods of payment are Visa, MasterCard, check, or money order.

For more information on NASS surveys and reports, call the NASS Agricultural Statistics Hotline at (800) 727-9540, 7:30 a.m. to 4:00 p.m. ET, or e-mail: nass@nass.usda.gov.

The United States Department of Agriculture (USDA) prohibits discrimination in all its programs and activities on the basis of race, color, national origin, age, disability, and where applicable, sex, marital status, familial status, parental status, religion, sexual orientation, genetic information, political beliefs, reprisal, or because all or a part of an individual's income is derived from any public assistance program. (Not all prohibited bases apply to all programs.) Persons with disabilities who require alternative means for communication of program information (Braille, large print, audiotape, etc.) should contact USDA's TARGET Center at (202) 720-2600 (voice and TDD).

To file a complaint of discrimination, write to USDA, Director, Office of Civil Rights, 1400 Independence Avenue, S.W., Washington, D.C. 20250-9410, or call (800) 795-3272 (voice) or (202) 720-6382 (TDD). USDA is an equal opportunity provider and employer.